

Well Name: BUDDY COM	Well Location: T23N / R6W / SEC 15 / SESE / 36.219574 / -107.448456	County or Parish/State: RIO ARRIBA / NM
Well Number: 1	Type of Well: OIL WELL	Allottee or Tribe Name:
Lease Number: NMNM42933	Unit or CA Name: BUDDY	Unit or CA Number: NMNM68174
US Well Number: 300392303200S1	Operator: DUGAN PRODUCTION CORPORATION	

Subsequent Report

Sundry ID: 2882426

Type of Submission: Subsequent Report	Type of Action: Plug and Abandonment
Date Sundry Submitted: 11/12/2025	Time Sundry Submitted: 11:52
Date Operation Actually Began: 09/03/2025	

Actual Procedure: Dugan Production plugged & abandoned the well from 09/03/2025 - 09/15/2025 per the attached procedure.

SR Attachments

Actual Procedure

- Buddy\_Com\_1\_gps\_dryhole\_marker\_photos\_20251112114626.pdf
- Buddy\_Com\_1\_BLM\_OCD\_apvd\_plug\_changes\_20251112112505.pdf
- Buddy\_Com\_1\_SR\_PA\_formation\_tops\_20251112112454.pdf
- Buddy\_Com\_1\_SR\_PA\_completed\_wellbore\_schematic\_20251112112448.pdf
- Buddy\_Com\_1\_SR\_PA\_completed\_work\_20251112112442.pdf

Well Number: 1

Type of Well: OIL WELL

Allottee or Tribe Name:

Lease Number: NMNM42933

Unit or CA Name: BUDDY

Unit or CA Number: NMNM68174

US Well Number: 300392303200S1

Operator: DUGAN PRODUCTION CORPORATION

Operator

I certify that the foregoing is true and correct. Title 18 U.S.C. Section 1001 and Title 43 U.S.C. Section 1212, make it a crime for any person knowingly and willfully to make to any department or agency of the United States any false, fictitious or fraudulent statements or representations as to any matter within its jurisdiction. Electronic submission of Sundry Notices through this system satisfies regulations requiring a

Operator Electronic Signature: TYRA FEIL

Signed on: NOV 12, 2025 11:51 AM

Name: DUGAN PRODUCTION CORPORATION

Title: Authorized Representative

Street Address: PO BOX 420

City: FARMINGTONState: NM

Phone: (505) 325-1821

Email address: TYRAFEIL@DUGANPRODUCTION.COM

Field

Representative Name: Aliph Reena

Street Address: PO Box 420

City: FarmingtonState: NMZip: 87499-0420

Phone: (505)360-9192

Email address: Aliph.Reena@duganproduction.com

BLM Point of Contact

BLM POC Name: KENNETH G RENNICK

BLM POC Title: Petroleum Engineer

BLM POC Phone: 5055647742

BLM POC Email Address: krennick@blm.gov

Disposition: Accepted

Disposition Date: 11/18/2025

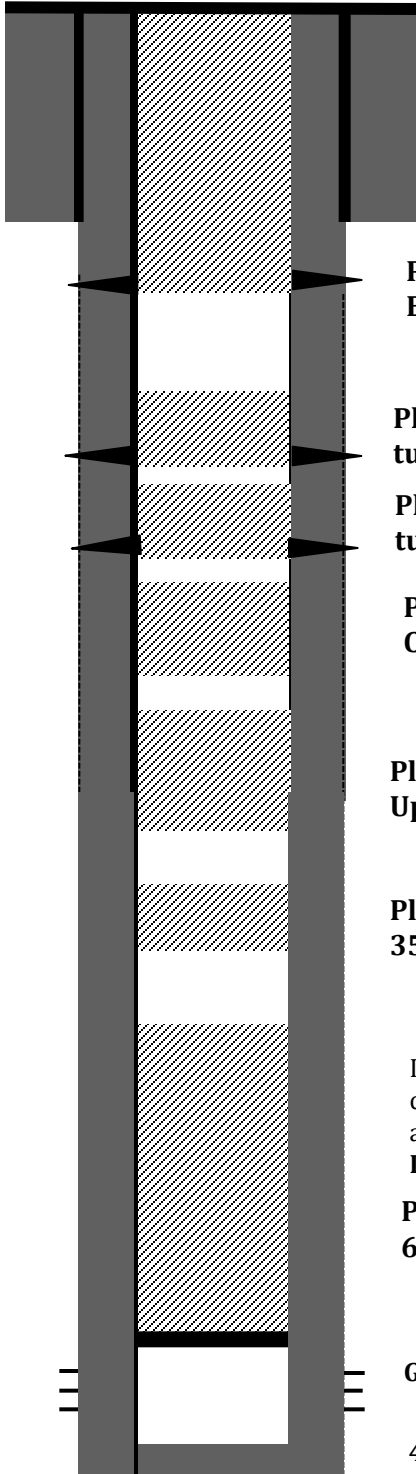
Signature: Kenneth Rennick

Dugan Production plugged and abandoned the Buddy Com 1 from **09-03-25 to 09-15-25** per the following procedure:

- MI & RU Aztec Rig 481 and cement equipment. Spot in and RU.
- Check pressures: Tubing 150 psi, Casing 150 psi, BH 0 psi.
- Pull and LD all production tubing.
- PU & tally 2-3/8" work string. Run 4½" string mill to scrape casing to 5096'.
- Check pressures: Tubing 0 psi, Casing 0 psi, BH 0 psi.
- RIH & set 4½" cement retainer @ 5020'. **Gallup perforations are @ 5070'-5615'.**
- Load and circulate hole clean with 85 bbls of water.
- Sting in retainer to attempt to inject, no injection below retainer, pressured up to 800 psi.
- Run CBL from 5020' to surface. Sent copy of CBL to NMOCD, copy of communications attached.
- Attempted to pressure test casing to 600 psi, test failed.
- **Plug I, Gallup Perforations-Gallup-DV tool-Mancos:** Spot Plug I inside 4½" casing from 5020' on top of the CIBP w/53 sks (60.95 cu ft) Class G neat cement to cover the Gallup top, DV tool & Mancos top. Displaced with 16.8 bbls of water. WOC overnight, Tagged TOC at 4346', good tag. **Plug I, Inside 4½" casing, cement retainer at 5020', 53 sks, 60.95 cu ft, Gallup-DV tool-Mancos tops, 4346'-5020'.**
- Check pressures: Tubing 0 psi, Casing 0 psi, BH 0 psi.
- **Plug II, Mesaverde:** Spot Plug II inside 4½" casing from 3599' w/18 sks, 20.7 cu ft Class G cement with 2% calcium chloride to cover the Mesaverde top. Displaced with 17 bbls of water. WOC 4 hrs. Tagged TOC at 3400', good tag. **Plug II, Inside 4½" casing, 18 sks, 20.7 cu ft, Mesaverde, 3400'-3599'.**
- **Pressure test casing to 600 psi for 30 minutes, good test.**
- **Plug III, Lower Chacra-Upper Chacra:** Spot Plug III inside 4½" casing from 2886' to 2345' w/42 sks, 48.3 cu ft Class G neat cement to cover the Lower Chacra & Upper Chacra tops. Displaced with 9 bbls of water. **Plug III, Inside 4½" casing, 42 sks, 48.3 cu ft, Lower Chacra-Upper Chacra, 2345'-2886'.**
- **Plug IV A, Pictured Cliffs-Fruitland:** Spot Plug IV A inside 4½" casing from 2108' to 1709' w/31 sks, 35.65 cu ft Class G neat cement to cover the Pictured Cliffs, Fruitland, tops. Displaced with 6.6 bbls of water. **Plug IV A, inside 4½" casing, 31 sks, 35.65 cu ft, Pictured Cliffs-Fruitland, 1709'-2108'.**
- Check pressures: Tubing 0 psi, Casing 0 psi, BH 0 psi.
- **Plug IV B, Kirtland:** RU WL. RIH and shot squeeze holes at 1698'. Attempted to establish injection rate, pressured up to 800 psi, no injection rate. Spot Plug IV B inside 4½" casing from 1782' w/22 sks, 25.3 cu ft Class G cement with 2% calcium chloride to cover the Kirtland top. Displaced with 5.8 bbls of water. WOC 4hrs. Tagged TOC at 1586', good tag. **Plug IV B, inside 4½" casing, perforations at 1698', end of tubing at 1782', 22 sks, 25.3 cu ft, Kirtland, 1586'-1782'.**

- Check pressures: Tubing 0 psi, Casing 0 psi, BH 0 psi.
- **Plug IV C, Ojo Alamo:** RU WL. RIH and shoot squeeze holes at 1495'. Attempted to establish injection rate, pressured up to 800 psi, no injection rate. Spot Plug IV C inside 4½" casing from 1564' w/22 sks, 25.3 cu ft Class G cement with 2% calcium chloride to cover the Ojo Alamo top. Displaced with 5.8 bbls of water. Tagged TOC @ 1289', good tag. **Plug IV C, inside 4½" casing, perforations at 1495', end of tubing at 1564' 22 sks, 25.3 cu ft, Ojo Alamo, 1289'-1564'.**
- **Plug V, Surface:** RU WL. RIH and shoot squeeze holes at 244'. Established injection rate to surface through BH. RIH open ended to 298', swap to cement. Spot and squeeze Plug V inside/outside 4½" casing from 298' to surface w/140 sks, 161 cu ft Class G neat cement to cover the surface casing shoe to surface. No displacement. LD all tubing. WOC overnight. RU welder. Cut wellhead off. Tagged TOC at 8' inside casing and 11' annulus. Good tag. **Plug V, Inside/Outside 4½" casing, perforations at 244' EOT at 298', 140 sks, 161 cu ft, Surface, 0'-298'.**
- Fill up casing, cellar and installed dry hole marker with 18 sks, 20.7 cu ft class G, neat cement.
- RD Aztec Well Service Rig 481. Clean location and move.
- Jimmy Dobson with BLM witnessed the job.
- Photos of P&A marker and GPS coordinates attached per NMOCD COA.
- **Well P&A'd 09/15/2025.**

Buddy Com # 1  
30-039-23032  
Counselors Gallup  
660' FSL & 660' FEL  
S15-T23N-R06W  
Rio Arriba County, NM



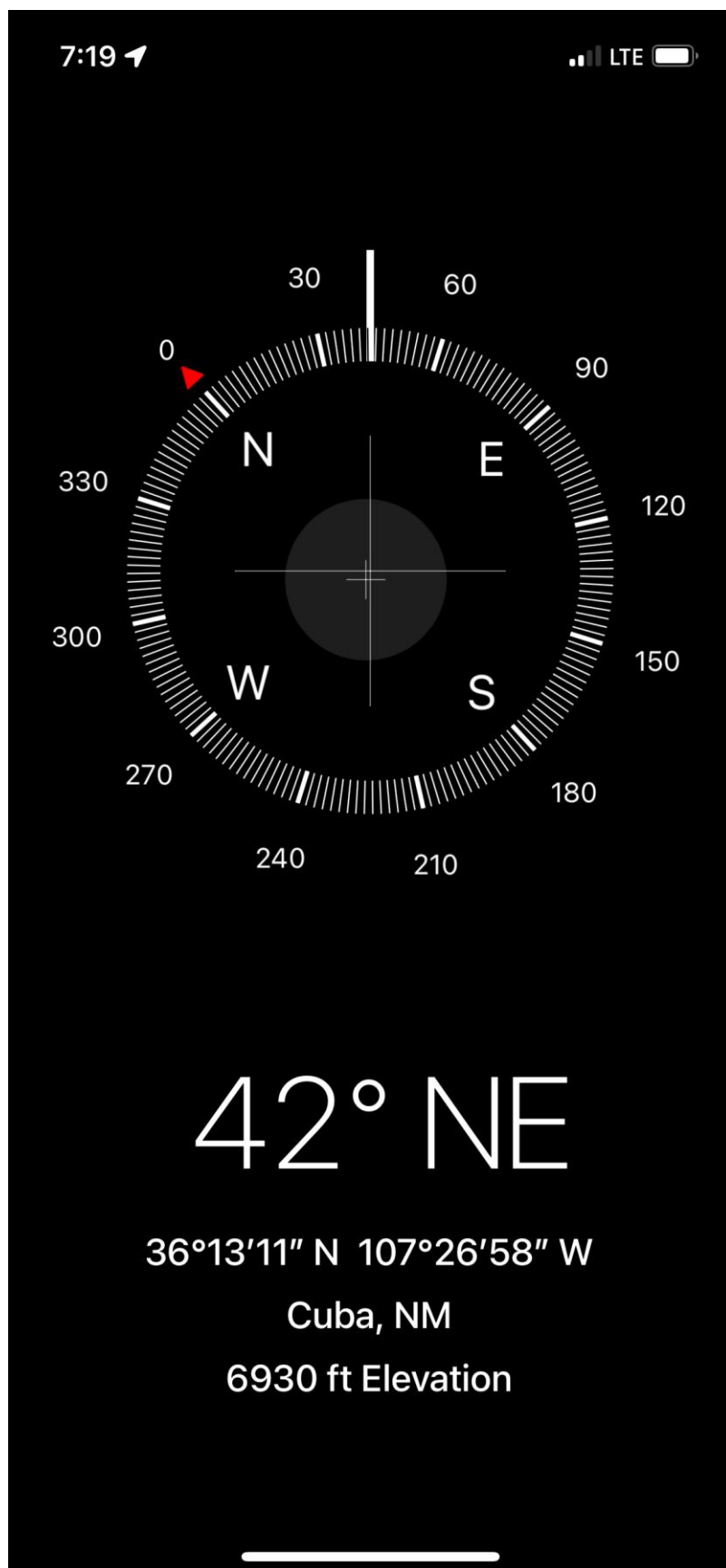
**4 1/2" 10.5 # casing @ 5671'. Hole size 7-7/8"**

**Buddy Com # 1**  
30-039-23032  
Counselors Gallup  
660' FSL & 660' FEL  
S15-T23N-R06W  
Rio Arriba County , NM

**Elevation ASL : 6920' GR, 6932' KB**

**Formation Tops (Referenced for the P & A'ed )**

- *Surface Casing - 194'*
- *Ojo Alamo - 1455'*
- *Kirtland - 1648'*
- *Fruitland - 1822'*
- *Pictured Cliffs - 2058'*
- *Lewis - 2176'*
- *Upper Chacra - 2472'*
- *Lower Chacra - 2836'*
- *Mesaverde - 3540'*
- *DV tool - 4501'*
- *Mancos - 4580'*
- *Gallup - 4898'*
- *Gallup Perfs - 5070'-5393'*













Sante Fe Main Office  
Phone: (505) 476-3441

General Information  
Phone: (505) 629-6116

Online Phone Directory  
<https://www.emnrd.nm.gov/oed/contact-us>

State of New Mexico  
Energy, Minerals and Natural Resources  
Oil Conservation Division  
1220 S. St Francis Dr.  
Santa Fe, NM 87505

CONDITIONS

Action 527446

CONDITIONS

Operator: DUGAN PRODUCTION CORP PO Box 420 Farmington, NM 87499	OGRID: 6515
	Action Number: 527446
	Action Type: [C-103] Sub. Plugging (C-103P)

CONDITIONS

Created By	Condition	Condition Date
loren.diede	None	11/18/2025