



P.O. Box 10640 Bozeman, Montana 59719

(406) 460-0903

TO: Jim Griswold, NMOCD

FROM: Curtis Shuck, Chairman

DATE: December 14, 2025

RE: McIntyre State #001 (30-005-00228) Orphan Well Pre-Plugging Methane Monitoring

### TECHNICAL MEMORANDUM

#### BACKGROUND:

The Well Done Foundation, Inc. (WDF) performing contract professional services methane monitoring for the State of New Mexico Energy, Minerals and Natural Resources Department – Oil Conservation Division (OCD) for Orphan Oil & Gas Wells in Chaves County, NM using the API# and coordinates provided by the OCD.

WDF dispatched a field team to the provided coordinates to locate the well and perform pre plug methane quantification. The field team traveled to the area and began a surface investigation on foot. The well was located and a Field Gas Analysis was performed. Field gas analysis produced a non-detect result

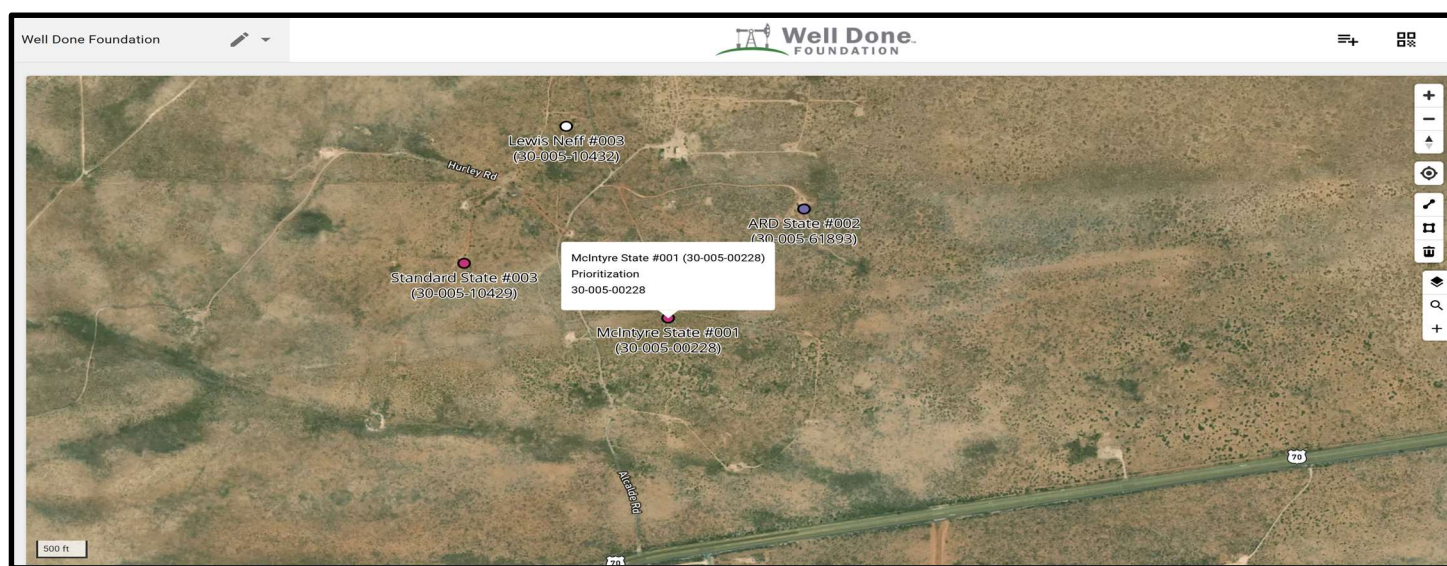


Image 1.1 – McIntyre State #001

#### FIELD NOTES

12/17/2022 – Travel from Hobbs, NM with Curtis & Francis to the McIntyre State #001 location North on SR18 and West on US380, North on Ponderosa Rd. and East on US70. At the approximate location, the team was able to drive to the well location, through an open gate onto State Trust Lands. A Ventbuster system was set up however, with a non-detect of CH<sub>4</sub> on the Field Gas Analysis, the test was not started.

#### CONCLUSION

- Field Gas Analysis produced a “Non-Detect”, so a gas sample was collected for Laboratory analysis prior to proceeding with methane emissions measurements.
- Laboratory Gas Analysis confirmed 0.00 ppm methane and therefore, no methane emissions measurements were performed.

Appendix A – Site Photos for McIntyre State #001 (30-005-00228)



1) Approximate location of the McIntyre #001 (30-005-00228) – North Facing



www.permianls.com  
575.397.3713 2609 W Marland Hobbs NM 88240

## C6+ Gas Analysis Report

15552G	McIntyre State #001 Casing Sample		McIntyre State #001 Casing Sample
Sample Point Code	Sample Point Name		Sample Point Location
Laboratory Services	2022061837	bag	CES - Spot
Source Laboratory	Lab File No	Container Identity	Sampler
USA	USA	USA	New Mexico
District	Area Name	Field Name	Facility Name
Dec 17, 2022 09:37	Dec 17, 2022 09:37	Dec 27, 2022 07:20	Dec 23, 2022
Date Sampled	Date Effective	Date Received	Date Reported
System Administrator			
Ambient Temp (°F)	Flow Rate (Mcf)	Analyst	Press PSI @ Temp °F Source Conditions
Well Done Foundation		gas	
Operator		Lab Source Description	

Component	Normalized Mol %	Un-Normalized Mol %	GPM
H2S (H2S)	0.0000	0	
Nitrogen (N2)	99.2740	99.274	
CO2 (CO2)	0.0340	0.034	
Methane (C1)	0.0000	0	
Ethane (C2)	0.0000	0	0.0000
Propane (C3)	0.0000	0	0.0000
I-Butane (IC4)	0.0000	0	0.0000
N-Butane (NC4)	0.0000	0	0.0000
I-Pentane (IC5)	0.0000	0	0.0000
N-Pentane (NC5)	0.0000	0	0.0000
Hexanes Plus (C6+)	0.6920	0.692	0.3000
TOTAL	100.0000	100.0000	0.3000

Method(s): Gas C6+ - GPA 2261, Extended Gas - GPA 2286, Calculations - GPA 2172

Analyzer Information			
Device Type:	Gas Chromatograph	Device Make:	Shimadzu
Device Model:	GC-2014	Last Cal Date:	Sep 26, 2022

Gross Heating Values (Real, BTU/ft³)			
14.696 PSI @ 60.00 Å°F		14.73 PSI @ 60.00 Å°F	
Dry	Saturated	Dry	Saturated
35.6	35.9	35.7	36.00

Calculated Total Sample Properties	
GPA2145-16 *Calculated at Contract Conditions	
Relative Density Real	Relative Density Ideal
0.9830	0.9830
Molecular Weight	
28.4699	

C6+ Group Properties		
Assumed Composition		
C6 - 60.000%	C7 - 30.000%	C8 - 10.000%

Field H2S
0 PPM

**PROTREND STATUS:** Passed By Validator on Dec 27, 2022  
**DATA SOURCE:** Imported

**PASSED BY VALIDATOR REASON:**  
Close enough to be considered reasonable.

**VALIDATOR:**  
Luis Cano  
**VALIDATOR COMMENTS:**  
OK

Source	Date	Notes
Luis Cano	Dec 27, 2022 8:49 am	Methane: 0 PPM

Sante Fe Main Office  
Phone: (505) 476-3441

General Information  
Phone: (505) 629-6116

Online Phone Directory  
<https://www.emnrd.nm.gov/ocd/contact-us>

State of New Mexico  
Energy, Minerals and Natural Resources  
Oil Conservation Division  
1220 S. St Francis Dr.  
Santa Fe, NM 87505

DEFINITIONS

Action 535178

DEFINITIONS

Operator: Well Done New Mexico LLC (OPG Vendor) 333 Main St Shelby, MT 59474	OGRID: 333567
	Action Number: 535178
	Action Type: [UF-OMA] Pre-Plug Methane Monitoring (UF-OMA-MMA)

DEFINITIONS

The OCD Mitigation Activity (OMA) forms are a subset of the OCD's forms exclusively designed for activities related to State of New Mexico's contracted evaluation, plugging, decommissioning, remediation, salvage and reclamation activities. Specifically, these forms are typically used where the OCD has acquired a hearing order allowing the OCD to perform mitigation activities on wells and associated facilities that no longer have an authorized or viable operator to perform the necessary work. These forms are not to be utilized for any other purpose.

Sante Fe Main Office  
Phone: (505) 476-3441

General Information  
Phone: (505) 629-6116

Online Phone Directory  
<https://www.emnrd.nm.gov/ocd/contact-us>

**State of New Mexico**  
**Energy, Minerals and Natural Resources**  
**Oil Conservation Division**  
**1220 S. St Francis Dr.**  
**Santa Fe, NM 87505**

QUESTIONS

Action 535178

**QUESTIONS**

Operator: Well Done New Mexico LLC (OPG Vendor) 333 Main St Shelby, MT 59474	OGRID: 333567
	Action Number: 535178
	Action Type: [UF-OMA] Pre-Plug Methane Monitoring (UF-OMA-MMA)

**QUESTIONS**

<b>Prerequisites</b>	
[OGRID] Well Operator	[228270] ROGER SLAYTON DBA ESCUDILLA OIL COMPANY
[API] Well Name and Number	[30-005-00228] MCINTYRE STATE #001
Well Status	Reclamation Fund Approved

<b>Monitoring Event Information</b>	
<i>Please answer all the questions in this group.</i>	
Reason For Filing	Pre-Plug Methane Monitoring
Date of monitoring	12/17/2022
Latitude	33.6515961
Longitude	-104.2052536

<b>Monitoring Event Details</b>	
<i>Please answer all the questions in this group.</i>	
Flow rate in cubic meters per day (m <sup>3</sup> /day)	0.00
Test duration in hours (hr)	0.0
Average flow temperature in degrees Celsius (°C)	13.0
Average gauge flow pressure in kilopascals (kPag)	0.0
Methane concentration in part per million (ppm)	0
Methane emission rate in grams per hour (g/hr)	0.00
Testing Method	Steady State

<b>Monitoring Contractor</b>	
<i>Please answer all the questions in this group.</i>	
Name of monitoring contractor	WELL DONE NEW MEXICO LLC