

Well Name: YATES FEDERAL 8	Well Location: T26S / R30E / SEC 8 / NESW / 32.0535442 / -103.9056451	County or Parish/State: EDDY / NM
Well Number: 2	Type of Well: OIL WELL	Allottee or Tribe Name:
Lease Number: NMNM31649	Unit or CA Name:	Unit or CA Number:
US Well Number: 3001531499	Operator: XTO ENERGY INCORPORATED	

Subsequent Report

Sundry ID: 2876328

Type of Submission: Subsequent Report	Type of Action: Plug and Abandonment
Date Sundry Submitted: 09/30/2025	Time Sundry Submitted: 10:04
Date Operation Actually Began: 06/07/2025	

Actual Procedure: XTO Energy Inc., has P&A'd the above mentioned well per the attached P&A Summary Report and WBD. CBL has also been submitted. Sbsq P&A Sundry submitted on 8/12/25 but due to AFMSS attachment issues, I am resubmitting.

SR Attachments

Actual Procedure

- Yates_8_Fed_2_CBL_6_20_25_20250930095947.pdf
- Yates_8_Federal_002_P_A_Sbsq_Summary_Rpt___WBD_20250930095023.pdf

Well Number: 2

Type of Well: OIL WELL

Allottee or Tribe Name:

Lease Number: NMNM31649

Unit or CA Name:

Unit or CA Number:

US Well Number: 3001531499

Operator: XTO ENERGY
INCORPORATED

Operator

I certify that the foregoing is true and correct. Title 18 U.S.C. Section 1001 and Title 43 U.S.C. Section 1212, make it a crime for any person knowingly and willfully to make to any department or agency of the United States any false, fictitious or fraudulent statements or representations as to any matter within its jurisdiction. Electronic submission of Sundry Notices through this system satisfies regulations requiring a

Operator Electronic Signature: SHERRY MORROW

Signed on: SEP 30, 2025 09:52 AM

Name: XTO ENERGY INCORPORATED

Title: Regulatory Analyst

Street Address: 6401 HOLIDAY HILL ROAD BLDG 5

City: MIDLAND

State: TX

Phone: (432) 218-3671

Email address: SHERRY.MORROW@EXXONMOBIL.COM

Field

Representative Name:

Street Address:

City:

State:

Zip:

Phone:

Email address:

BLM Point of Contact

BLM POC Name: JAMES A AMOS

BLM POC Title: Acting Assistant Field Manager

BLM POC Phone: 5752345927

BLM POC Email Address: JAMOS@BLM.GOV

Disposition: Accepted

Disposition Date: 10/01/2025

Signature: James A Amos

Yates 8 Federal 002
API Number 30-015-31499
P&A Summary Report

6/7/25: MIRU.

6/8/25: Lay down rods and pump. Installed and tested BOP. SW/SDFN.

6/9/25: Attempt to unset TAC. Loaded tbg with 10 bbls. held 2000 psi. Continued trying to unset TAC. No success. MIRU WL. RIH with 2" GR. Could not get in hole. RIH with 1.68 GR. Could not get in hole. RD WL. MIRU swivel. Worked tbg with torque in tbg string. Unsuccessful. RD Swivel. SW/SDFN.

6/10/25: MIRU WL. Bailed paraffin from tbg with paraffin knife and bailer on braided line. Re head E line equipment and RIH with 1.78. GR to seat nipple at 9,243'. RIH w/1.68 tbg gun to 9,228'. Shot drain holes. TOH w/WL and gun. Gun did not fire. RD WL. SW/SDFN.

6/11/25: MIRU WL. RIH with 1.68 perf gun to 9185. Shot circulating holes. POOH with WL and tools. Pumped 65bbls 10# brine down tbg. 1 bpm at 2000 psi. Would not circulate. RIH with free point tool on wireline. TAC at 9,110'.
9079' - 0% free. 8755' - 10% free 8500' - 35% free 8250' - 65% free 8015' - 100% free POOH with WL and tools. Attempted to pump hot water down tbg. No success. SW/SDFN.

6/12/25: MIRU WL. RIH with 2.25 jet cutter. Made cut 10' above TAC. POOH with cutter. Worked tbg to try and free while pumping fluid down tbg. Moved up hole 10'. No more movement. RIH with 2.25 jet cutter to 8675' and made cut. POOH with cutter. Tbg moving free. RD WL equipment. Laid down 27 jts 2 7/8" tgg. EOT at 7806'. SW/SDFN.

6/13/25: Circulate 180 bbls 10# brine down tubing out the casing @ 2.5 bbls min @ 1500 psi. (Returns were 12.4# mud (not dehydrated, still in liquid form)). MIRU Reverse Unit and Fishing Equipment. POOH, tallying and laying down 207 jts 2 7/8" tbg. EOT @ approx. 2000'. SW/SDFWE.

6/16/25: Pooh laying down and tallying approx 2000' (60 jts 2 7/8" j55 production tubing. Jet cut was on jt 270 from surface.) Hold Point-Spot out production tubing- Spot in fishing tools. Pick up fishing tools. Hold point- RIH picking up using stab guide- 2 7/8" ph6 tubing, total of 190 jts. Ovetshot @ 6205'. SW/SDFN.

6/17/25: Contd TIH picking up 2 7/8" Ph6 - Tagged TOF @ 8670'. Work over and Latch onto fish- Work stuck fish free- Laid on 24 jts on pipe racks, Fish dragged up hole approx 10 pts until Over shot @ 8441' quit dragging. Set cofo to pooh w tbg to the derrick. Pooh with 247 jts 2 7/8" ph6 to derrick. Laid down 3 3/4" booster, stood back 6 -3 1/2" drill collars, 3 3/4" jar and 3 3/4" bumper sub w/overshot. Laid down fish (16' cut jt, 12 jts 2 7/8" tubing (385' of tbg), 22' cut jt. SW/SDFN.

6/18/25: RIH with 240 jts 2 7/8" 7.90# ph6 from derrick. Rih picking up tbg- Tagged Fish at 9101'. Worked to latch onto fish- TAC released - Pushed TOF down to 9234' and stacked out. Pooh with 20 jts tbg to derrick. Shoe @ 8605'. SW/SDFN.

6/19/25: POOH LD 266 jts 2-7/8" PH6 Tbg. plus Drill Collars and Fishing tools. Fish was able to be pushed down to 9234'. MO LD Machine and Pipe racks changed out Pipe rams from 2-7/8" / 2-3/8" in BOP. SW/SDFN.

6/20/25: MIRU WLU equip. RIH w/ GR (4.5") down to 9225' ROH GR LD. MU RIH w/ CIBP set at 9170'. Load Well and Press. Tested hole for 30 min @500 psi. Test Good. MU PU RIH w/ CBL Tools Log from 9,170' to Surface. ROH LD CBL Logging Tools. RIH w/ Dump bailer twice. 35' Total 5 sxs. Class H Cmt. (.51 FW Mix/ 1.01 Slry Vlm. mix) WOC CTOC 9135'. RDMO WLU. SW/SDFN.

6/21/25: MIRU Hydro Tbg. Tester and Equip. RIH hydro tested 77 jts. 2/-7/8" L80. Paraffin swelled up cups and would not go through. RDMO Hydro testers. PU TIH 281 jts., and 21.5' of Jt. 282. TTOC @ 9054'. LD two jts 280 in hole(9,000'). MIRU Hot oiler. Hot Oil (water) 70 bbls dn Tbg @220* Clean out paraffin. Secured Well Shut down.

6/22/25: RU Circulate SGM to btm (180bbls) to condition well. ROH LD 50 jts of 2-7/8" tbg to floor. TOH 77 Stands to derricks. MIRU Hydro tester bars and equip. RIH Hydro tested 77 stands (154 Jts) of 2-7/8" tbg (230 Jts total) EOT @ 7404'. RDMO Hydro testers. Broke Circ. w/5 bbls 10# BW. Spot 25 sxs Class H Cmt from 7400' -7200"

(2.5/FW Mix:-5.4 bbls./Slurry Vlm) CTOC: 7200' WOC Displace w/ 41.5 bbls. POOH 20 Stds (40jts) to Derricks Circ.Rev Out tbg to open top pit. RD pumping hoses and secured well Shut down.

6/23/25: TIH 218 jts plus 6' of jt 219' to TTOC @ 7,022' POOH LD 40 Jts to pipe racks. EOT @ 6113' Broke Circ w/5 bbls 10# BW. Spot 185 sxs Class C Cmt from 6100' -4243" (27.75 FW Mix:-43.50bbls./Slurry Vlm) ' WOC Displace w/24.6 bbls. TTOC- 4280' (6-24). TOH to derricks 45 stds. (90jts 2-7/8") Circ Rev out 27.8 bbls to open to pit. WOC. TIH 133Jts TTOC @4280'. LD 35 jts. 2-7/8" to pipe rack tbg no longer need. Secured Well Shut down.

6/24/25: TIH WL 1-11/16" Strip gun (4 shots) Perf. @ 3520' all shots fired. RDMO WL strip gun, lubricator and equip. POOH Ld 40 Jts. TIH 24 Stds,(48Jts) w/ 5-1/2 pkr set. EOT @ 1546'. Est Circ pump 25 bbls through 5-1/5 to 8-5/8" Broke Circ w/5 bbls 10# BW. Spot 120sxs Class C Cmt from 3520" - 3000" (18 FW Mix:-28bbls/Slurry Vlm)ttoc 2913'. WOC Displace w/42.6 bbls. Secured Well Shut down.

6/25/25: TIH 90 jts and 15' of jt 91, TTOC @ 2913'. TOH LD 66 Jts to Pipe racks. and 48 jts to derricks. PU Pkr RIH at bottom to 1000' set Pkr.(2-3/8') MIRU WLU Lubricator and Equip. RIH w/ 1-11/16" strip gun (4 shots) as WL RIH Tag @ 970' cable back spooled on drum. ROH WL LD Strip Gun. TOH to Derricks 30 jts. and Id pkr. MIRU WLU w/ 1-11/16" strip gun (4shots). RIH w/WL Strip gun 1-11/16"(4 shots) Perf at 2842'. ROH RDMO WLU and equip., Secured Well shut down.

6/26/25: POOH @ stds.(4 jts). MU PU 2-3/8"Pkr RIH 15 Stds(30 Jts) set pkr. EOT 968' Est Circulation 5-1/2'-8-5/8" Broke Circ. w/5 bbls 10# BW. Spot 336 sxs Class C Cmt from 2841"- 1400" (50.5 FW Mix: -79bbls./Slurry Vlm) CTOC:1400' Displace w/15 bbls. WOC. RIH 44 plus 3' of jt 45 TTOC @ 1420' POOH 44 to derricks. MIRU WLU equip. RIH WL Perf @ 1395' (1-11/16" strip gun). RDMO WLU and equip. Est Circ through 5-1/2"- 8-5"8 bubble. Secure Well shut down.

6/27/25: Broke Circ. w/5 bbls 10# BW. S pot 220 sxs. Class C Cmt. from 1396'- 900" (33 FW Mix:-51.7bbls./Slurry Vlm) Displace w/ 15bbls. WOC. POOH LD Pkr. RIH 26jts plus 15' of jt 27 TTOC @ 860' POOH LD 27 jts(2-7/8") to floor. MIRU WLU and equip. RIH w/WLU 1-9/16 gun (4 shots) perf @ 840. RDMO WLU and Equip. Est. Circ. from 5-1/2"to 8-5/8" 15 bbls. Surface csg. Bubble test passed. RD BOP and NP 5k flange to Cmt. Broke Circ. w/5 bbls 10# BW. Spot 200 sxs. Class C Cmt. from 841'-Surface (30 FW Mix:-47bbls./Slurry Vlm) Displace to Surface. Good returns at pit. RDMO.

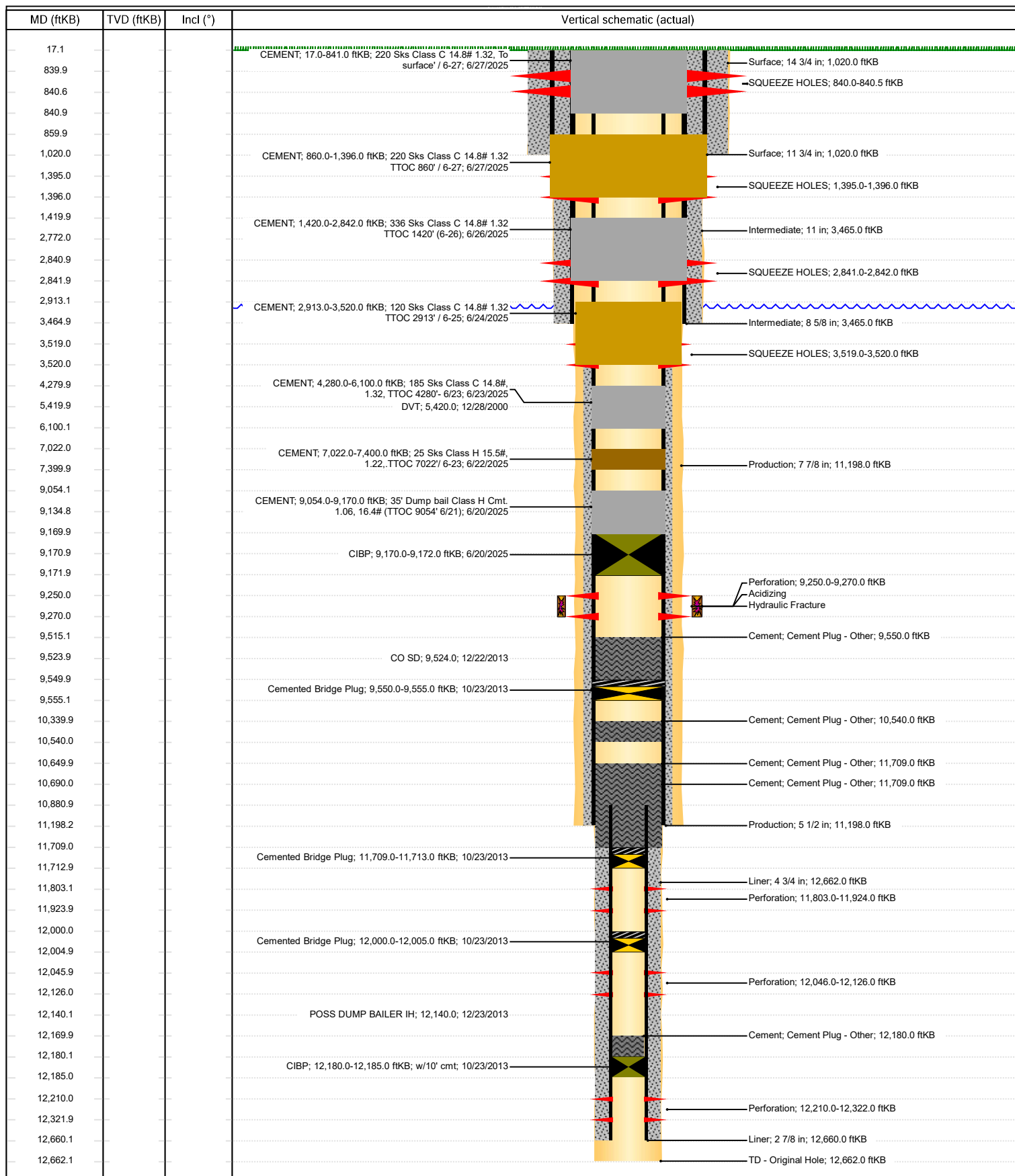
7/30/25: WH cutoff and DHM set.



Schematic - Vertical with Perfs

Well Name: Yates 8 Federal 002

API/UWI 3001531499	SAP Cost Center ID 1137462001	Permit Number	State/Province New Mexico	County Eddy
Surface Location T26S-R30E-S08	Spud Date 10/5/1992 00:00	Original KB Elevation (ft) 3,084.00	Ground Elevation (ft) 3,067.00	KB-Ground Distance (ft) 17.00



Sante Fe Main Office
Phone: (505) 476-3441

General Information
Phone: (505) 629-6116

Online Phone Directory
<https://www.emnrd.nm.gov/ocd/contact-us>

State of New Mexico
Energy, Minerals and Natural Resources
Oil Conservation Division
1220 S. St Francis Dr.
Santa Fe, NM 87505

CONDITIONS

Action 520573

CONDITIONS

Operator: XTO ENERGY, INC 6401 Holiday Hill Road Midland, TX 79707	OGRID: 5380
	Action Number: 520573
	Action Type: [C-103] Sub. Plugging (C-103P)

CONDITIONS

Created By	Condition	Condition Date
gcordero	None	12/16/2025