

Submit a Copy To Appropriate District
Office
District I – (575) 393-6161
1625 N. French Dr., Hobbs, NM 88240
District II – (575) 748-1283
811 S. First St., Artesia, NM 88210
District III – (505) 334-6178
1000 Rio Brazos Rd., Aztec, NM 87410
District IV – (505) 476-3460
1220 S. St. Francis Dr., Santa Fe, NM
87505

State of New Mexico
Energy, Minerals and Natural Resources

Form C-103
Revised July 18, 2013

OIL CONSERVATION DIVISION
1220 South St. Francis Dr.
Santa Fe, NM 87505

SUNDRY NOTICES AND REPORTS ON WELLS (DO NOT USE THIS FORM FOR PROPOSALS TO DRILL OR TO DEEPEN OR PLUG BACK TO A DIFFERENT RESERVOIR. USE "APPLICATION FOR PERMIT" (FORM C-101) FOR SUCH PROPOSALS.)		WELL API NO.
1. Type of Well: Oil Well <input type="checkbox"/> Gas Well <input type="checkbox"/> Other <input type="checkbox"/>		5. Indicate Type of Lease STATE <input type="checkbox"/> FEE <input type="checkbox"/> FEDERAL <input type="checkbox"/>
2. Name of Operator		6. State Oil & Gas Lease No.
3. Address of Operator		7. Lease Name or Unit Agreement Name
4. Well Location Unit Letter _____: _____ feet from the _____ line and _____ feet from the _____ line Section _____ Township _____ Range _____ NMPM _____ County _____		8. Well Number
11. Elevation (Show whether DR, RKB, RT, GR, etc.)		9. OGRID Number
		10. Pool name or Wildcat

12. Check Appropriate Box to Indicate Nature of Notice, Report or Other Data

NOTICE OF INTENTION TO:		SUBSEQUENT REPORT OF:	
PERFORM REMEDIAL WORK <input type="checkbox"/>	PLUG AND ABANDON <input type="checkbox"/>	REMEDIAL WORK <input type="checkbox"/>	ALTERING CASING <input type="checkbox"/>
TEMPORARILY ABANDON <input type="checkbox"/>	CHANGE PLANS <input type="checkbox"/>	COMMENCE DRILLING OPNS. <input type="checkbox"/>	P AND A <input type="checkbox"/>
PULL OR ALTER CASING <input type="checkbox"/>	MULTIPLE COMPL <input type="checkbox"/>	CASING/CEMENT JOB <input type="checkbox"/>	
DOWNHOLE COMMINGLE <input type="checkbox"/>			
CLOSED-LOOP SYSTEM <input type="checkbox"/>			
OTHER: <input type="checkbox"/>		OTHER: <input type="checkbox"/>	

13. Describe proposed or completed operations. (Clearly state all pertinent details, and give pertinent dates, including estimated date of starting any proposed work). SEE RULE 19.15.7.14 NMAC. For Multiple Completions: Attach wellbore diagram of proposed completion or recompletion.

I hereby certify that the information above is true and complete to the best of my knowledge and belief.

SIGNATURE Eileen M. Kosakowski TITLE _____ DATE _____

Type or print name _____ E-mail address: _____ PHONE: _____

For State Use Only

APPROVED BY: _____ TITLE _____ DATE _____

Conditions of Approval (if any):

Toothman Gas Com #001 30-015-21566**This well was plugged as follows:**

- 9/22/2025: MIRU P&A rig & associated equipment; ND wellhead; NU & test BOP.
- 9/23/2025: PU RBP retrieving head & TIH on work string.
- 9/24/2025: Finish TIH & latched RBP @9,594' TM; TOO H; PU 4-3/4" tri-cone & TIH.
- 9/25/2025: Finish TIH & tagged CIBP @11,427' TM, encountered no fill; TOO H.
- 9/26/2025: Finish TOO H & LD bit; Start TIH.
- 9/29/2025: Finish TIH & pump plug #1 @11,420' TM (165 sks class H Balanced plug) WOC overnight.
- 9/30/2025: Tag plug #1 @10,158' TM; PU to 10,000' TM & pumped plug #2 (25 sks class H cement balanced plug); PU & WOC 6 hours; TIH & tag plug #2 @ 9,912' TM (12' too deep); Pumped an additional 20 sks class H cement @9,912' TM; WOC overnight.
- 10/1/2025: Tag plug #2 @9,830' TM; TOO H; MIRU WLU, RIH w/ GR/IB to 9,670' WLM, set CIBP @9,615' WLM, RDMO WLU.
- 10/2/2025: TIH & tag CIBP @9,600' TM; Circulate wellbore volume MLF; Pressure test casing to 670psi for 30 minutes, good test; Pump plug #3 @9,600' TM (35 sks class H cement balanced plug); WOC overnight.
- 10/3/2025: Tag plug #3 @9,318' TM; PU to 6,600' TM & pump plug #4 (40 sks class H cement balanced plug); PU to 5,450' TM & pump plug #5 (35 sks class H cement balanced plug); PU to 4,210' TM & pump plug #6 (35 sks class H cement balanced plug); WOC overnight.
- 10/6/2025: Tag plug #6 @ 3,929' TM; TOO H; MIRU WLU, perf @ 2,647' WLM, RDMO WLU; Pumped MLF & established injection @3bpm/1,000psi to perfs, could not establish circulation; Set squeeze packer @ 1,892' TM & pumped plug #7 (85 sks class C cement squeeze plug), SI well & WOC 4 hours; Tag plug #7 @ 2,298' TM; TOO H; MIRU WLU, perf @ 1,015' WLM, RDMO WLU; Pumped MLF & established injection @ 2.75bpm/1,000psi, could not establish circulation.
- 10/7/2025: Set squeeze packer @ 298' TM, pump plug #8 (85 sks class C cement squeeze plug), WOC 4 hours, tag plug #8 @690' TM; TOO H; MIRU WLU, perf @ 538' WLM, RDMO WLU; Pump MLF, unable to establish injection or circulation; TIH to 588' TM & pump plug #9 to surface (70 sks class C cement balanced plug), WOC overnight.

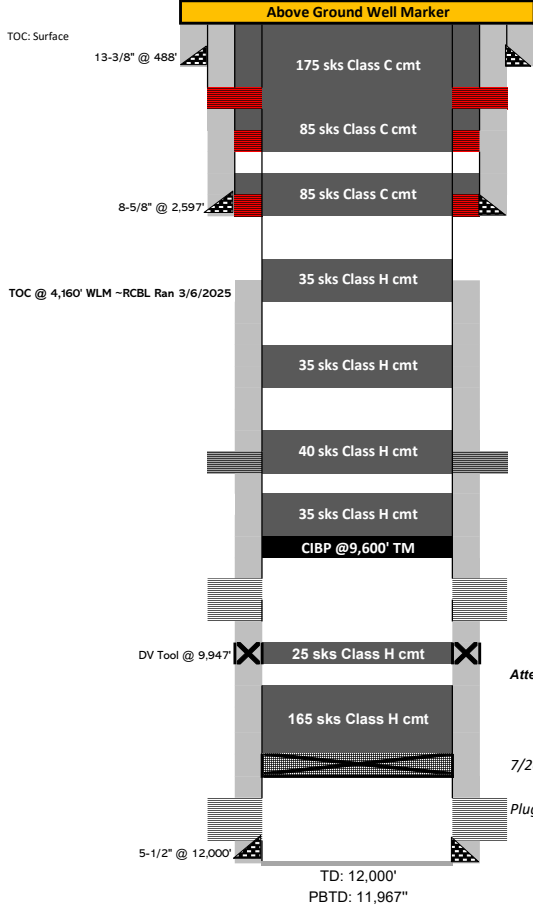
- 10/8/2025: RD B1 flange and found cement to surface in 5-1/2" string; Cut window into 13-3/8" and found TOC @ surface; ND ball valve and fittings from 8-5/8" and discovered VR plug inside 8-5/8" wing valve preventing flow from intermediate string; Decision made to drill out surface plug & attempt squeeze plug.
- 10/9/2025 - 10/17/2025: Drill out plug from surface to 588' TM.
- 10/17/2025: Complete surface plug drillout; Cleaned out hole to 690' TM; MIRU WLU, perf @ 690' WLM, RDMO WLU; Established circulation thru perms to 8-5/8" string w/ full returns; Pump plug #9 from surface to surface (175 sks class C cement squeeze plug), WOC overnight.
- 10/20/2025: Cut off wellhead and found cement to surface on all strings; Capped all strings w/ 1/4" plate w/ weephole; Installed 4" OD dryhole marker 5' above GL with the following information: Matador Resources Company, Toothman Gas Com #001, 30-015-21566, Sec-25-21S-27E, Eddy co., 10/20/2025; RDMO P&A rig and equipment.

Spud Date: 6/18/1975

Plug Date: RDMO: 10/20/2025

BLM Inspector: Robert Trujillo

Toothman Gas Com #001
1980' FSL & 660' FWL Sec 25 - 21S - 27E
Eddy County, NM
API: 30-015-21566
WELLBORE SCHEMATIC
6/18/1975



690' WLM: Perf and squeeze class C cement to surface on all strings (175 sks class C cement) (Surface Shoe & Rustler) WOC

1,015' WLM: Perf and squeeze 85 sks class C cement squeeze plug (TOC 690' TM / Req. 915') (Base of Salt) WOC & Tag

2,647' WLM: Perf and squeeze 85 sks class C cement squeeze plug (TOC 2,298' TM / Req. 2,538') (Intermediate Shoe & Bell Canyon) WOC & Tag

4,210' TM: Spot 35 sks class H balanced plug (TOC 3,929' TM / Req. 4,110') (TOC) WOC & Tag

5,450' TM: Spot 35 sks class H balanced plug (Est. 5,104' / Req. 5,350') (Bone Springs Top)

6,600' TM: Spot 40 sks class H balanced plug (Est. 6,205') (Squeezed Bone Springs Perfs)

9,600' TM: Set CIBP; Circulate wellbore full of MLF; Pressure Test casing to 670psi for 30 minutes & Bubble Test; Spot 35 sks class H cmt (Open Wolfcamp Perfs) (TOC 9,318' TM) WOC & Tag

Wolfcamp Lime Perfs: (9,667' - 9,777')

10,000' TM: Spot 25 sks class H cmt balanced plug (TOC 9,830' TM / Req. 9,897') (DV Tool) WOC & Tag
Attempted Morrow-Wolfcamp dual completion (11/05/1990)-(11/21/1990) Morrow did not produce

11,427' TM: Clean out to 11,427' TM & Spot 165 sks class H cement balanced plug @11,420' TM(TOC 10,158' TM) (CIBP, Atoka, Strawn) WOC & Tag
7/26/1995: CIBP set at 11,428'

Plugged Lower Morrow perfs (11,507' - 11,929')

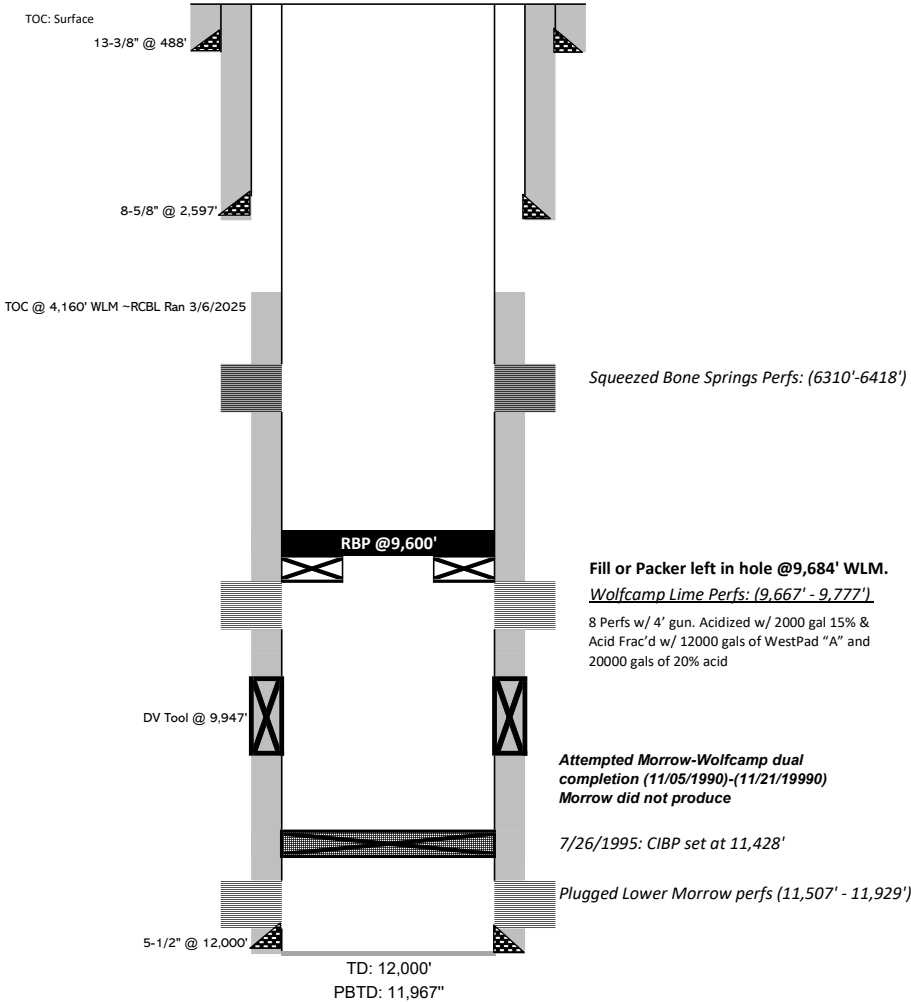
	Casing Information					
	Hole Size	Casing Size	Type	Weight (lb/ft)	Joints	Depth Set
Surface	17-1/2"	13-3/8"	H-40	54.5		488'
Intermediate	11"	8-5/8"	K-55	24		2597'
Production	7-7/8"	5-1/2"	S-95	17		0-3653' & 6241'-12000'
Production	7-7/8"	5-1/2"	N-80	15.5		3653'-6241'
	DV Tool	9947'				
	Float Collar					

	Cementing Record	TOC	Date Run
Surface	435 sxs Class "c" w/ 2% Cacl (6/19/75)	Surface	8/15/1975
Intermediate	550 sxs Hal Lite w/5% Gilsonite + 200 sxs Class "C" w/2% CaCL.	Surface	8/15/1975
1 stage Production	1st stage 355 sxs Class 'H'	5650'	8/15/1975
2 stage Production	2nd Stage through DV tool @9947' with 350 sxs (7/28/75)	5650'	8/15/1975

Geologic Markers	
Rustler	225
Base of Salt	965
Bell Canyon	2,588
Bone Spring	5,400
Wolfcamp	9,720
Lower Wolfcamp	10,215
Strawn	10,735
Atoka	11,474
Middle Morrow	11,728
Lower Morrow	12,000

NOTE: Packer type unknown. Tbg came out of hole w/ nipple/plunger/and some kind of slickline tool. See pictures

Toothman Gas Com #001
1980' FSL & 660' FWL Sec 25 - 21S - 27E
Eddy County, NM
API: 30-015-21566
WELLBORE SCHEMATIC
6/18/1975



Fill or Packer left in hole @9,684' WLM.
Wolfcamp Lime Perfs: (9,667' - 9,777')
8 Perfs w/ 4' gun. Acidized w/ 2000 gal 15% &
Acid Frac'd w/ 12000 gals of WestPad "A" and
20000 gals of 20% acid

Attempted Morrow-Wolfcamp dual
completion (11/05/1990)-(11/21/19990)
Morrow did not produce

7/26/1995: CIBP set at 11,428'

Plugged Lower Morrow perfs (11,507' - 11,929')

NOTE: Packer type
unknown. Tbg came out
of hole w/
nipple/plunger/and
some kind of slickline
tool. See pictures in file.

Casing Information						
	Hole Size	Casing Size	Type	Weight (lb/ft)	Joints	Depth Set
Surface	17-1/2"	13-3/8"	H-40	54.5		488'
Intermediate	11"	8-5/8"	K-55	24		2597'
Production	7-7/8"	5-1/2"	S-95	17		0-3653' & 6241'-12000'
Production	7-7/8"	5-1/2"	N-80	15.5		3653'-6241'
	DV Tool	9947'				
	Float Collar					

Cementing Record			TOC	Date Run
Surface	435 sxs Class "c" w/ 2% Cacl (6/19/75)		Surface	8/15/1975
Intermediate	550 sxs Hal Lite w/5% Gilsonite + 200 sxs Class "C" w/2% CaCL.		Surface	8/15/1975
1 stage Production	1st stage 355 sxs Class 'H'		5650'	8/15/1975
2 stage Production	2nd Stage through DV tool @9947' with 350 sxs (7/28/75)		5650'	8/15/1975

Geologic Markers	
Rustler	225
Base of Salt	965
Bell Canyon	2,588
Bone Spring	5,400
Wolfcamp	9,720
Lower Wolfcamp	10,215
Strawn	10,735
Atoka	11,474
Middle Morrow	11,728
Lower Morrow	12,000

Sante Fe Main Office
Phone: (505) 476-3441

General Information
Phone: (505) 629-6116

Online Phone Directory
<https://www.emnrd.nm.gov/oed/contact-us>

State of New Mexico
Energy, Minerals and Natural Resources
Oil Conservation Division
1220 S. St Francis Dr.
Santa Fe, NM 87505

CONDITIONS

Action 525546

CONDITIONS

Operator: MATADOR PRODUCTION COMPANY One Lincoln Centre Dallas, TX 75240	OGRID: 228937
	Action Number: 525546
	Action Type: [C-103] Sub. Plugging (C-103P)

CONDITIONS

Created By	Condition	Condition Date
gcordero	Clean Location in accordance with 19.15.25.10 NMAC.	12/17/2025
gcordero	Submit C-103Q within one year of plugging.	12/17/2025