

Office
District I - (575) 393-6161
1625 N. French Dr., Hobbs, NM 88240
District II - (575) 748-1283
811 S. First St., Artesia, NM 88210
District III - (505) 334-6178
1000 Rio Brazos Rd., Aztec, NM 87410
District IV - (505) 476-3460
1220 S. St. Francis Dr., Santa Fe, NM
87505

State of New Mexico
Energy, Minerals and Natural Resources

OIL CONSERVATION DIVISION
1220 South St. Francis Dr.
Santa Fe, NM 87505

WELL API NO.
30-025-34391
5. Indicate Type of Lease
STATE [] FEE [X]
6. State Oil & Gas Lease No.
7. Lease Name or Unit Agreement Name
McCasland 18 Fee
8. Well Number
#1
9. OGRID Number
003044
10. Pool name or Wildcat
House; Drinkard; Blinebry; Warren, Tubb,
11. Elevation (Show whether DR, RKB, RT, GR, etc.)
3544' GR

SUNDRY NOTICES AND REPORTS ON WELLS
(DO NOT USE THIS FORM FOR PROPOSALS TO DRILL OR TO DEEPEN OR PLUG BACK TO A
DIFFERENT RESERVOIR. USE "APPLICATION FOR PERMIT" (FORM C-101) FOR SUCH
PROPOSALS.)
1. Type of Well: Oil Well [X] Gas Well [] Other
2. Name of Operator
Burgundy Oil & Gas of New Mexico Inc.
3. Address of Operator
505 N. Big Spring St., Suite 603 Midland, TX 79701
4. Well Location
Unit Letter K : 1650 feet from the S line and 2000 feet from the W line
Section 18 Township 20S Range 39E NMPM County Lea
11. Elevation (Show whether DR, RKB, RT, GR, etc.)
3544' GR

12. Check Appropriate Box to Indicate Nature of Notice, Report or Other Data

NOTICE OF INTENTION TO:
PERFORM REMEDIAL WORK [] PLUG AND ABANDON []
TEMPORARILY ABANDON [] CHANGE PLANS []
PULL OR ALTER CASING [] MULTIPLE COMPL []
DOWNHOLE COMMINGLE []
CLOSED-LOOP SYSTEM []
OTHER: []
SUBSEQUENT REPORT OF:
REMEDIAL WORK [] ALTERING CASING []
COMMENCE DRILLING OPNS. [] P AND A [X]
CASING/CEMENT JOB []
OTHER: []

13. Describe proposed or completed operations. (Clearly state all pertinent details, and give pertinent dates, including estimated date of starting any proposed work). SEE RULE 19.15.7.14 NMAC. For Multiple Completions: Attach wellbore diagram of proposed completion or recompletion.

JMR Services, LLC plugged this well on behalf of Burgundy Oil & Gas of New Mexico, Inc. Please see the attached P&A Subsequent Report.

Spud Date: []

Rig Release Date: []

I hereby certify that the information above is true and complete to the best of my knowledge and belief.

SIGNATURE Kelton Woodard TITLE Plugging Agent DATE 02/05/2026

Type or print name Kelton Woodard E-mail address: kwoodard@jmrservices.com PHONE: 432-618-1050

For State Use Only

APPROVED BY: TITLE DATE

Conditions of Approval (if any):

**Subsequent P&A Report
Burgundy Oil & Gas of NM Inc
McCasland 18 Fee #1
30-025-34391**

08/26/25 MIRU.

08/27/25 RIH with gauge ring to (2600), POOH. RIH with 5.5 packer and set @ 2570'. Rig up pump hose to 5.5 casing filled the back side with 37 bbl, pressure tested to 150 psi and hold for 10 mins. Bled off pressure, rig up pump hose to 2 3/8 tubing. EIR 3.5/min @ 100 psi. Pumped 130 bbl brine water, opened 1 in low torque valve well was on vacuum. Secure well and install night caps, equipment shutdown.

08/28/25 RIH with 5.5 retainer and set @ 2538'. Loaded the back side with 60 bbl brine water, pumped 10 bbl brine water down tubing 100 psi. Plug (# 1) Squeezed (575sxs) class (C) cement from (2538') to (7240'). Lay down 1 joint and reverse out clean with 15 bbl brine water. Third Party: JSI wireline, ran CBL from 2530 to surface, top of cement at 2300 ft then at 410 ft to surface with a void of 1890 ft. Rig down third party wireline.

08/29/25 Plug (# 2) Spot (25 sxs) class (C) cement From (2563') to (2329'). RIH with (5.5 ad-1) packer and set @ (1200'). RIH with weight bar and tagged TOC @ 2329'. RIH and perf'd @ 1726'. Rigged up pump and Pressure up against perf to (500 psi). No rate. Spoke with (Robert Trujillo OCD) approved to : Drop down 50 ft and spot 30 sacks woc tag. Tubing Operations: Ran in hole open ended to 1777'. Plug (# 3) Spot (30 sxs) class (C) cement From (1777') to (1480'). Secure well and install night caps, equipment shutdown.

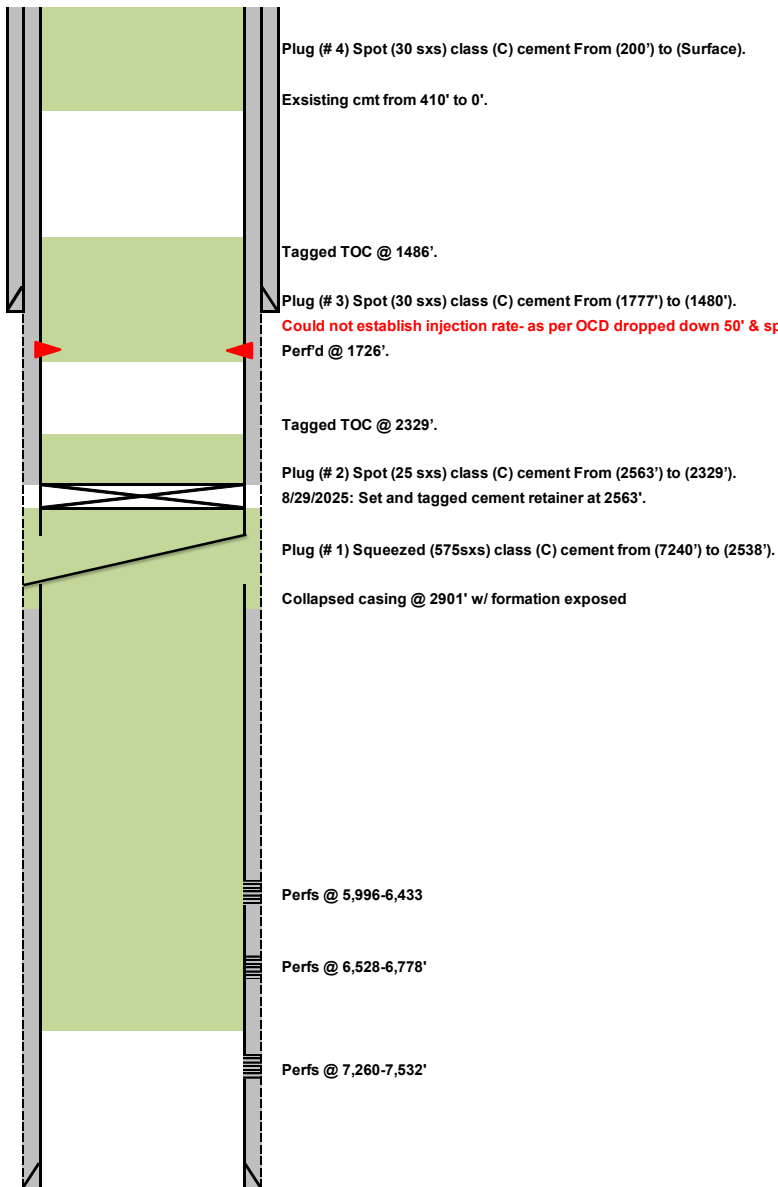
09/02/25 RIH and tagged TOC @ 1486'. Pump Operations: Bubble tested plug on 2 3/8 tubing and 5.5 casing. Good test no bubbles. Plug (# 4) Spot (30 sxs) class (C) cement From (200') to (Surface). RDMO.

01/21/26 Cutoff wellhead. Install above ground P&A marker.

Author:	<u>Shyanne @ JMR</u>	Well No.:	<u>#1</u>
Well Name:	<u>McCasland 18 Fee</u>	API #:	<u>30-025-34391</u>
Field/Pool:	<u>House; Drinkard</u>	Location:	<u>Sec 18, T20S, R39E</u>
County:	<u>Lea</u>		<u>1650 FSL & 2000 FWL</u>
State:	<u>NM</u>	GL:	<u>3544'</u>
Spud Date:	<u>7/21/1998</u>		

Description	O.D.	Grade	Weight	Depth	Hole	Cmt Sx	TOC
Surface Csg	8 5/8		24#	1676'	12 1/4	800	0'
Prod Csg	5 1/2		15.5#	7598'	7 7/8	550	410' & 2300'

Formation Tops	
Anhy	1572'
Yates	2848'
7 Rvrs	3101'
Queen	3673'
San Andres	4266'
Glorieta	5565'
Blinebry	5996'
Tubb	6528'
Drinkard	7260'



Sante Fe Main Office
Phone: (505) 476-3441

General Information
Phone: (505) 629-6116

Online Phone Directory
<https://www.emnrd.nm.gov/oecd/contact-us>

State of New Mexico
Energy, Minerals and Natural Resources
Oil Conservation Division
1220 S. St Francis Dr.
Santa Fe, NM 87505

CONDITIONS

Action 551042

CONDITIONS

Operator: JMR SERVICES, LLC 4706 Green Tree Blvd. Midland, TX 79707	OGRID: 372464
	Action Number: 551042
	Action Type: [C-103] Sub. Plugging (C-103P)

CONDITIONS

Created By	Condition	Condition Date
gcordero	Clean Location in accordance with 19.15.25.10 NMAC.	2/6/2026
gcordero	Submit C-103Q within one year of plugging.	2/6/2026