

Well Name: POKER LAKE UNIT 13-24 PC	Well Location: T24S / R29E / SEC 13 / SWNE / 32.218157 / -103.934757	County or Parish/State: EDDY / NM
Well Number: 805H	Type of Well: OIL WELL	Allottee or Tribe Name:
Lease Number: NMNM05912	Unit or CA Name: POKER LAKE UNIT	Unit or CA Number: NMNM71016X
US Well Number: 3001556751	Operator: XTO PERMIAN OPERATING LLC	

Notice of Intent

Sundry ID: 2891245

Type of Submission: Notice of Intent

Type of Action: APD Change

Date Sundry Submitted: 01/15/2026

Time Sundry Submitted: 03:56

Date proposed operation will begin: 01/22/2026

Procedure Description: ***Well record Clean-up*** XTO Permian Operating, LLC respectfully requests approval to revise the pool name as outlined in the previously approved Sundry Notice. The Pool Name for the Pool code 96473 is being updated from PEIRCE CROSSING; BONE SPRING to PIERCE CROSSING; BONE SPRING, EAST The dedicated acreage is changing for the following pools : WILDCAT S243006B; LWR BONE SPRING - From 160.00 to 80.00 PIERCE CROSSING; BONE SPRING, EAST - From 120.00 to 200.00 See attached C-102s reflecting the above changes.

NOI Attachments

Procedure Description

POKER_LAKE_UNIT_13_24_PC_805H_96473_C102_FINAL_01_14_2026_20260115153131.pdf

POKER_LAKE_UNIT_13_24_PC_805H_97753_C102_FINAL_01_14_2026_20260115153131.pdf

POKER_LAKE_UNIT_13_24_PC_805H_11520_C102_FINAL_01_14_2026_20260115153131.pdf

Well Name: POKER LAKE UNIT 13-24 PC	Well Location: T24S / R29E / SEC 13 / SWNE / 32.218157 / -103.934757	County or Parish/State: EDDY / NM
Well Number: 805H	Type of Well: OIL WELL	Allottee or Tribe Name:
Lease Number: NMNM05912	Unit or CA Name: POKER LAKE UNIT	Unit or CA Number: NMNM71016X
US Well Number: 3001556751	Operator: XTO PERMIAN OPERATING LLC	

Operator

I certify that the foregoing is true and correct. Title 18 U.S.C. Section 1001 and Title 43 U.S.C. Section 1212, make it a crime for any person knowingly and willfully to make to any department or agency of the United States any false, fictitious or fraudulent statements or representations as to any matter within its jurisdiction. Electronic submission of Sundry Notices through this system satisfies regulations requiring a

Operator Electronic Signature: VISHAL RAJAN **Signed on:** JAN 15, 2026 03:55 PM

Name: XTO PERMIAN OPERATING LLC

Title: Regulatory Clerk

Street Address: 6401 HOLIDAY HILL ROAD BLDG 5

City: MIDLAND **State:** TX

Phone: (432) 620-6704

Email address: VISHAL.RAJAN@EXXONMOBIL.COM

Field

Representative Name:

Street Address:

City: **State:** **Zip:**

Phone:

Email address:

BLM Point of Contact

BLM POC Name: MARIAH HUGHES **BLM POC Title:** Land Law Examiner

BLM POC Phone: 5752345972 **BLM POC Email Address:** MHUGHES@BLM.GOV

Disposition: Approved **Disposition Date:** 01/16/2026

Signature: CODY LAYTON ASSISTANT FIELD MANAGER

Form 3160-5
(October 2024)

UNITED STATES
DEPARTMENT OF THE INTERIOR
BUREAU OF LAND MANAGEMENT

FORM APPROVED
OMB No. 1004-0220
Expires: October 31, 2027

SUNDRY NOTICES AND REPORTS ON WELLS
Do not use this form for proposals to drill or to re-enter an abandoned well. Use Form 3160-3 (APD) for such proposals.

5. Lease Serial No.	NMNM05912
6. If Indian, Allottee or Tribe Name	

SUBMIT IN TRIPLICATE - Other instructions on page 2

1. Type of Well <input checked="" type="checkbox"/> Oil Well <input type="checkbox"/> Gas Well <input type="checkbox"/> Other		7. If Unit of CA/Agreement, Name and/or No. POKER LAKE UNIT/NMNM71016X
2. Name of Operator XTO PERMIAN OPERATING LLC		8. Well Name and No. POKER LAKE UNIT 13-24 PC/805H
3a. Address 6401 HOLIDAY HILL ROAD BLDG 5, MIDLAND,	3b. Phone No. (include area code) (432) 683-2277	9. API Well No. 3001556751
4. Location of Well (Footage, Sec., T.,R.,M., or Survey Description) SEC 13/T24S/R29E/NMP		10. Field and Pool or Exploratory Area CEDAR CANYON/BONE SPRING
		11. Country or Parish, State EDDY/NM

12. CHECK THE APPROPRIATE BOX(ES) TO INDICATE NATURE OF NOTICE, REPORT OR OTHER DATA

TYPE OF SUBMISSION	TYPE OF ACTION			
<input checked="" type="checkbox"/> Notice of Intent	<input type="checkbox"/> Acidize	<input type="checkbox"/> Deepen	<input type="checkbox"/> Production (Start/Resume)	<input type="checkbox"/> Water Shut-Off
<input type="checkbox"/> Subsequent Report	<input type="checkbox"/> Alter Casing	<input type="checkbox"/> Hydraulic Fracturing	<input type="checkbox"/> Reclamation	<input type="checkbox"/> Well Integrity
<input type="checkbox"/> Final Abandonment Notice	<input type="checkbox"/> Casing Repair	<input type="checkbox"/> New Construction	<input type="checkbox"/> Recomplete	<input type="checkbox"/> Other
	<input checked="" type="checkbox"/> Change Plans	<input type="checkbox"/> Plug and Abandon	<input type="checkbox"/> Temporarily Abandon	
	<input type="checkbox"/> Convert to Injection	<input type="checkbox"/> Plug Back	<input type="checkbox"/> Water Disposal	

13. Describe Proposed or Completed Operation: Clearly state all pertinent details, including estimated starting date of any proposed work and approximate duration thereof. If the proposal is to deepen directionally or recomplate horizontally, give subsurface locations and measured and true vertical depths of all pertinent markers and zones. Attach the Bond under which the work will be performed or provide the Bond No. on file with BLM/BIA. Required subsequent reports must be filed within 30 days following completion of the involved operations. If the operation results in a multiple completion or recompletion in a new interval, a Form 3160-4 must be filed once testing has been completed. Final Abandonment Notices must be filed only after all requirements, including reclamation, have been completed and the operator has determined that the site is ready for final inspection.)

Well record Clean-up

XTO Permian Operating, LLC respectfully requests approval to revise the pool name as outlined in the previously approved Sundry Notice. The Pool Name for the Pool code 96473 is being updated from PEIRCE CROSSING; BONE SPRING to PIERCE CROSSING; BONE SPRING, EAST

The dedicated acreage is changing for the following pools :

WILDCAT S243006B; LWR BONE SPRING - From 160.00 to 80.00

PIERCE CROSSING; BONE SPRING, EAST - From 120.00 to 200.00

See attached C-102s reflecting the above changes.

14. I hereby certify that the foregoing is true and correct. Name (Printed/Typed) VISHAL RAJAN / Ph: (432) 620-6704	Title Regulatory Clerk
Signature (Electronic Submission)	Date 01/15/2026

THE SPACE FOR FEDERAL OR STATE OFFICE USE

Approved by MARIAH HUGHES / Ph: (575) 234-5972 / Approved	Title Land Law Examiner	Date 01/16/2026
Conditions of approval, if any, are attached. Approval of this notice does not warrant or certify that the applicant holds legal or equitable title to those rights in the subject lease which would entitle the applicant to conduct operations thereon.	Office CARLSBAD	

Title 18 U.S.C Section 1001 and Title 43 U.S.C Section 1212, make it a crime for any person knowingly and willfully to make to any department or agency of the United States any false, fictitious or fraudulent statements or representations as to any matter within its jurisdiction.

(Instructions on page 2)

GENERAL INSTRUCTIONS

This form is designed for submitting proposals to perform certain well operations and reports of such operations when completed as indicated on Federal and Indian lands pursuant to applicable Federal law and regulations. Any necessary special instructions concerning the use of this form and the number of copies to be submitted, particularly with regard to local area or regional procedures and practices, are either shown below, will be issued by or may be obtained from the local Federal office.

SPECIFIC INSTRUCTIONS

Item 4 - Locations on Federal or Indian land should be described in accordance with Federal requirements. Consult the local Federal office for specific instructions.

Item 13: Proposals to abandon a well and subsequent reports of abandonment should include such special information as is required by the local Federal office. In addition, such proposals and reports should include reasons for the abandonment; data on any former or present productive zones or other zones with present significant fluid contents not sealed off by cement or otherwise; depths (top and bottom) and method of placement of cement plugs; mud or other material placed below, between and above plugs; amount, size, method of parting of any casing, liner or tubing pulled and the depth to the top of any tubing left in the hole; method of closing top of well and date well site conditioned for final inspection looking for approval of the abandonment. If the proposal will involve **hydraulic fracturing operations**, you must comply with 43 CFR 3162.3-3, including providing information about the protection of usable water. Operators should provide the best available information about all formations containing water and their depths. This information could include data and interpretation of resistivity logs run on nearby wells. Information may also be obtained from state or tribal regulatory agencies and from local BLM offices.

NOTICES

The privacy Act of 1974 and the regulation in 43 CFR 2.48(d) provide that you be furnished the following information in connection with information required by this application.

AUTHORITY: 30 U.S.C. 181 et seq., 351 et seq., 25 U.S.C. 396; 43 CFR 3160.

PRINCIPAL PURPOSE: The information is used to: (1) Evaluate, when appropriate, approve applications, and report completion of subsequent well operations, on a Federal or Indian lease; and (2) document for administrative use, information for the management, disposal and use of National Resource lands and resources, such as: (a) evaluating the equipment and procedures to be used during a proposed subsequent well operation and reviewing the completed well operations for compliance with the approved plan; (b) requesting and granting approval to perform those actions covered by 43 CFR 3162.3-2, 3162.3-3, and 3162.3-4; (c) reporting the beginning or resumption of production, as required by 43 CFR 3162.4-1(c) and (d) analyzing future applications to drill or modify operations in light of data obtained and methods used.

ROUTINE USES: Information from the record and/or the record will be transferred to appropriate Federal, State, local or foreign agencies, when relevant to civil, criminal or regulatory investigations or prosecutions in connection with congressional inquiries or to consumer reporting agencies to facilitate collection of debts owed the Government.

EFFECT OF NOT PROVIDING THE INFORMATION: Filing of this notice and report and disclosure of the information is mandatory for those subsequent well operations specified in 43 CFR 3162.3-2, 3162.3-3, 3162.3-4.

The Paperwork Reduction Act of 1995 requires us to inform you that:

The BLM collects this information to evaluate proposed and/or completed subsequent well operations on Federal or Indian oil and gas leases.

Response to this request is mandatory.

The BLM would like you to know that you do not have to respond to this or any other Federal agency-sponsored information collection unless it displays a currently valid OMB control number.

BURDEN HOURS STATEMENT: Public reporting burden for this form is estimated to average 8 hours per response, including the time for reviewing instructions, gathering and maintaining data, and completing and reviewing the form. Direct comments regarding the burden estimate or any other aspect of this form to U.S. Department of the Interior, Bureau of Land Management (1004-0137), Bureau Information Collection Clearance Officer (WO-630), 1849 C St., N.W., Mail Stop 401 LS, Washington, D.C. 20240

Additional Information

Location of Well

0. SHL: SWNE / 2420 FNL / 1626 FEL / TWSP: 24S / RANGE: 29E / SECTION: 13 / LAT: 32.218157 / LONG: -103.934757 (TVD: 0 feet, MD: 0 feet)

PPP: SWNE / 1959 FNL / 2310 FEL / TWSP: 24S / RANGE: 29E / SECTION: 13 / LAT: 32.219431 / LONG: -103.936968 (TVD: 9714 feet, MD: 10200 feet)

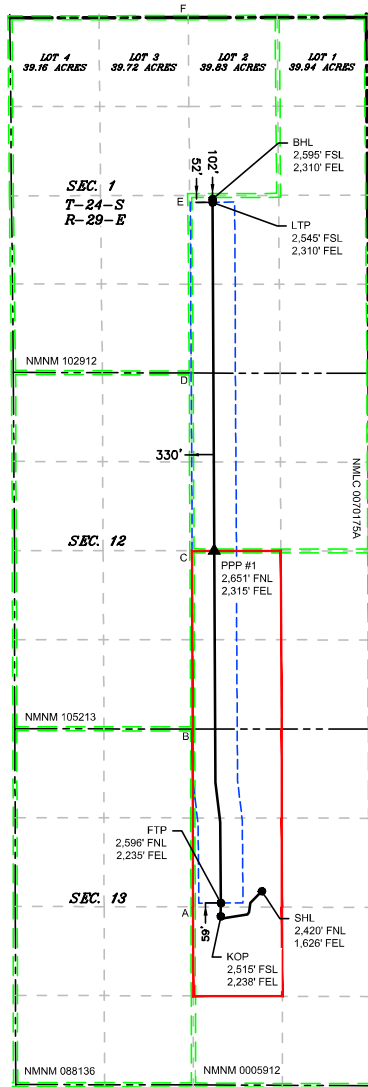
BHL: NWSE / 2595 FSL / 2310 FEL / TWSP: 24S / RANGE: 29E / SECTION: 1 / LAT: 32.246525 / LONG: -103.937005 (TVD: 9714 feet, MD: 20041 feet)

CONFIDENTIAL

ACREAGE DEDICATION PLATS

This grid represents a standard section. You may superimpose a non-standard section, or larger area, over this grid. Operators must outline the dedicated areage in a red box, clearly show the well surface location and bottom hole location, if it is directionally drilled, with the dimensions from the section lines in the cardinal directions. If this is a horizontal wellbore show on this plat the location of the First Take Point and Last Take Point, and the point within the completed interval (other than the First Take Point or Last Take Point) that is closest to any outer boundary of the tract.

Surveyors shall use the latest United States government survey or dependent resurvey. Well Locations will be in reference to the New Mexico Principal Meridian. If the land is not surveyed, contact the OCD Engineering Bureau. Independent subdivision surveys will not be accepted.



LEGEND

- SECTION LINE
- TOWNSHIP LINE
- DEDICATED ACREAGE
- 330' BUFFER
- MINERAL LEASE
- WELL BORE
- ▲ PPP
- WELL

WELL COORDINATE TABLE								
WELL	NAD 83 NME X	NAD 83 NME Y	NAD 83 LAT	NAD 83 LON	NAD 27 NME X	NAD 27 NME Y	NAD 27 LAT	NAD 27 LON
SHL	664,598.4	443,327.7	32.218156	-103.934757	623,414.9	443,268.3	32.218032	-103.934268
KOP	663,986.4	442,952.7	32.217131	-103.936740	622,802.9	442,893.3	32.217007	-103.936251
FTP	663,989.3	443,151.7	32.217678	-103.936729	622,805.8	443,092.3	32.217554	-103.936240
LTP	663,865.3	453,595.5	32.246388	-103.937005	622,682.1	453,535.9	32.246264	-103.936515
BHL	663,865.0	453,645.5	32.246526	-103.937005	622,681.8	453,585.9	32.246402	-103.936515
PPP #1	663,890.2	448,399.6	32.232105	-103.936986	622,706.9	448,340.1	32.231981	-103.936497

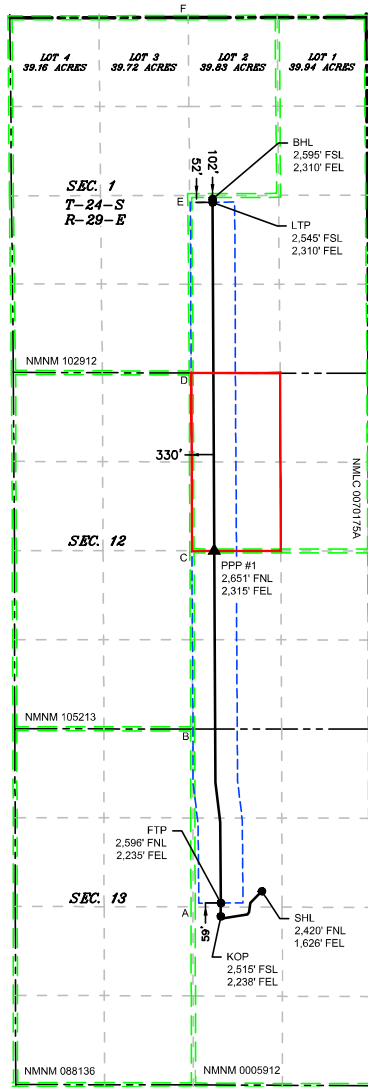
CORNER COORDINATE TABLE				
CORNER	NAD 83 NME X	NAD 83 NME Y	NAD 27 NME X	NAD 27 NME Y
A	663,576.0	443,093.9	622,392.5	443,034.6
B	663,570.2	445,748.2	622,386.8	445,688.8
C	663,559.1	448,399.9	622,375.8	448,340.4
D	663,547.9	451,051.0	622,364.7	450,991.4
E	663,524.5	453,696.5	622,341.4	453,636.9
F	663,501.0	456,347.1	622,318.0	456,287.4
G	666,224.6	443,088.1	625,041.0	443,028.8
H	666,218.3	445,746.5	625,034.9	445,687.1
I	666,205.3	448,396.9	625,022.0	448,337.4
J	666,193.9	451,046.7	625,010.6	450,987.1
K	666,174.6	453,699.9	624,991.5	453,640.3
L	666,154.8	456,352.9	624,971.7	456,293.2

V:\618.013_XTO_Energy - NM\003_Poker Lake Unit\04 - 13-1,13-24 PC - EDDY Wells\28 - PLU Pierce Canyon 13-24 805H\DWG\13-24 PC 805H.dwg

ACREAGE DEDICATION PLATS

This grid represents a standard section. You may superimpose a non-standard section, or larger area, over this grid. Operators must outline the dedicated areage in a red box, clearly show the well surface location and bottom hole location, if it is directionally drilled, with the dimensions from the section lines in the cardinal directions. If this is a horizontal wellbore show on this plat the location of the First Take Point and Last Take Point, and the point within the completed interval (other than the First Take Point or Last Take Point) that is closest to any outer boundary of the tract.

Surveyors shall use the latest United States government survey or dependent resurvey. Well Locations will be in reference to the New Mexico Principal Meridian. If the land is not surveyed, contact the OCD Engineering Bureau. Independent subdivision surveys will not be accepted.



V:\618.013_XTO_Energy - NM\003_Poker_Lake_Unit\04 - 13-1,13-24 PC - EDDY_Wells\28 - PLU_Pierce_Canyon_13-24_805H\DWG\13-24_PC_805H.dwg

LEGEND

- SECTION LINE
- TOWNSHIP LINE
- DEDICATED ACREAGE
- 330' BUFFER
- MINERAL LEASE
- WELL BORE
- ▲ PPP
- WELL

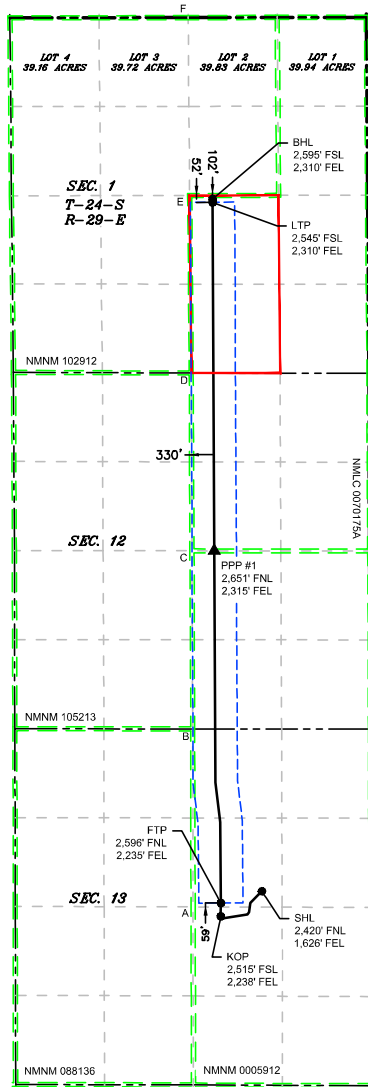
WELL COORDINATE TABLE								
WELL	NAD 83 NME X	NAD 83 NME Y	NAD 83 LAT	NAD 83 LON	NAD 27 NME X	NAD 27 NME Y	NAD 27 LAT	NAD 27 LON
SHL	664,598.4	443,327.7	32.218156	-103.934757	623,414.9	443,268.3	32.218032	-103.934268
KOP	663,986.4	442,952.7	32.217131	-103.936740	622,802.9	442,893.3	32.217007	-103.936251
FTP	663,989.3	443,151.7	32.217678	-103.936729	622,805.8	443,092.3	32.217554	-103.936240
LTP	663,865.3	453,595.5	32.246388	-103.937005	622,682.1	453,535.9	32.246264	-103.936515
BHL	663,865.0	453,645.5	32.246526	-103.937005	622,681.8	453,585.9	32.246402	-103.936515
PPP #1	663,890.2	448,399.6	32.232105	-103.936986	622,706.9	448,340.1	32.231981	-103.936497

CORNER COORDINATE TABLE				
CORNER	NAD 83 NME X	NAD 83 NME Y	NAD 27 NME X	NAD 27 NME Y
A	663,576.0	443,093.9	622,392.5	443,034.6
B	663,570.2	445,748.2	622,386.8	445,688.8
C	663,559.1	448,399.9	622,375.8	448,340.4
D	663,547.9	451,051.0	622,364.7	450,991.4
E	663,524.5	453,696.5	622,341.4	453,636.9
F	663,501.0	456,347.1	622,318.0	456,287.4
G	666,224.6	443,088.1	625,041.0	443,028.8
H	666,218.3	445,746.5	625,034.9	445,687.1
I	666,205.3	448,396.9	625,022.0	448,337.4
J	666,193.9	451,046.7	625,010.6	450,987.1
K	666,174.6	453,699.9	624,991.5	453,640.3
L	666,154.8	456,352.9	624,971.7	456,293.2

ACREAGE DEDICATION PLATS

This grid represents a standard section. You may superimpose a non-standard section, or larger area, over this grid. Operators must outline the dedicated areage in a red box, clearly show the well surface location and bottom hole location, if it is directionally drilled, with the dimensions from the section lines in the cardinal directions. If this is a horizontal wellbore show on this plat the location of the First Take Point and Last Take Point, and the point within the completed interval (other than the First Take Point or Last Take Point) that is closest to any outer boundary of the tract.

Surveyors shall use the latest United States government survey or dependent resurvey. Well Locations will be in reference to the New Mexico Principal Meridian. If the land is not surveyed, contact the OCD Engineering Bureau. Independent subdivision surveys will not be accepted.



LEGEND

- SECTION LINE
- TOWNSHIP LINE
- DEDICATED ACREAGE
- 330' BUFFER
- MINERAL LEASE
- WELL BORE
- PPP
- WELL

WELL COORDINATE TABLE								
WELL	NAD 83 NME X	NAD 83 NME Y	NAD 83 LAT	NAD 83 LON	NAD 27 NME X	NAD 27 NME Y	NAD 27 LAT	NAD 27 LON
SHL	664,598.4	443,327.7	32.218156	-103.934757	623,414.9	443,268.3	32.218032	-103.934268
KOP	663,986.4	442,952.7	32.217131	-103.936740	622,802.9	442,893.3	32.217007	-103.936251
FTP	663,989.3	443,151.7	32.217678	-103.936729	622,805.8	443,092.3	32.217554	-103.936240
LTP	663,865.3	453,595.5	32.246388	-103.937005	622,682.1	453,535.9	32.246264	-103.936515
BHL	663,865.0	453,645.5	32.246526	-103.937005	622,681.8	453,585.9	32.246402	-103.936515
PPP #1	663,890.2	448,399.6	32.232105	-103.936986	622,706.9	448,340.1	32.231981	-103.936497

CORNER COORDINATE TABLE				
CORNER	NAD 83 NME X	NAD 83 NME Y	NAD 27 NME X	NAD 27 NME Y
A	663,576.0	443,093.9	622,392.5	443,034.6
B	663,570.2	445,748.2	622,386.8	445,688.8
C	663,559.1	448,399.9	622,375.8	448,340.4
D	663,547.9	451,051.0	622,364.7	450,991.4
E	663,524.5	453,696.5	622,341.4	453,636.9
F	663,501.0	456,347.1	622,318.0	456,287.4
G	666,224.6	443,088.1	625,041.0	443,028.8
H	666,218.3	445,746.5	625,034.9	445,687.1
I	666,205.3	448,396.9	625,022.0	448,337.4
J	666,193.9	451,046.7	625,010.6	450,987.1
K	666,174.6	453,699.9	624,991.5	453,640.3
L	666,154.8	456,352.9	624,971.7	456,293.2

V:\618.013_XTO_Energy - NM\003_Poker Lake Unit\04 - 13-1,13-24 PC - EDDY Wells\28 - PLU Pierce Canyon 13-24 805H\DWG\13-24 PC 805H.dwg

Sante Fe Main Office
Phone: (505) 476-3441

General Information
Phone: (505) 629-6116

Online Phone Directory
<https://www.emnrd.nm.gov/ocd/contact-us>

State of New Mexico
Energy, Minerals and Natural Resources
Oil Conservation Division
1220 S. St Francis Dr.
Santa Fe, NM 87505

CONDITIONS

Action 543965

CONDITIONS

Operator: XTO PERMIAN OPERATING LLC. 3617 Big Spring St. MIDLAND, TX 79705	OGRID: 373075
	Action Number: 543965
	Action Type: [C-103] NOI Change of Plans (C-103A)

CONDITIONS

Created By	Condition	Condition Date
ward.rikala	Corrected one pool. Please see C-102's.	2/17/2026