

Sante Fe Main Office Phone: (505) 476-3441  General Information Phone: (505) 629-6116  Online Phone Directory <a href="https://www.emnrd.nm.gov/ocd/contact-us">https://www.emnrd.nm.gov/ocd/contact-us</a>	<b>State of New Mexico</b> <b>Energy, Minerals and Natural Resources</b> <b>Oil Conservation Division</b> <b>1220 S. St Francis Dr.</b> <b>Santa Fe, NM 87505</b>	Form C-103 August 1, 2011  Permit 330574  WELL API NUMBER 30-025-46746  5. Indicate Type of Lease Federal  6. State Oil & Gas Lease No.
--	---	--

**SUNDRY NOTICES AND REPORTS ON WELLS**  
 (DO NOT USE THIS FORM FOR PROPOSALS TO DRILL OR TO DEEPEN OR PLUG BACK TO A DIFFERENT RESERVOIR. USE "APPLICATION FOR PERMIT" (FORM C-101) FOR SUCH PROPOSALS.)

1. Type of Well: Acid Gas Injection	8. Well Number 001
2. Name of Operator Salt Creek Midstream, LLC	9. OGRID Number 373554
3. Address of Operator 5775 N Sam Houston Pkwy W, Suite #600, Houston, TX 77086	10. Pool name or Wildcat

4. Well Location  
 Unit Letter L : 2362 feet from the S line and feet 595 from the W line  
 Section 21 Township 26S Range 36E NMPM \_\_\_\_\_ County Lea

11. Elevation (Show whether DR, KB, BT, GR, etc.)  
 2927 GR

Pit or Below-grade Tank Application  or Closure   
 Pit Type \_\_\_\_\_ Depth to Groundwater \_\_\_\_\_ Distance from nearest fresh water well \_\_\_\_\_ Distance from nearest surface water \_\_\_\_\_  
 Pit Liner Thickness: \_\_\_\_\_ mil Below-Grade Tank: Volume \_\_\_\_\_ bbls; Construction Material \_\_\_\_\_

12. Check Appropriate Box to Indicate Nature of Notice, Report or Other Data

NOTICE OF INTENTION TO: PERFORM REMEDIAL WORK <input type="checkbox"/> PLUG AND ABANDON <input type="checkbox"/> TEMPORARILY ABANDON <input type="checkbox"/> CHANGE OF PLANS <input type="checkbox"/> PULL OR ALTER CASING <input type="checkbox"/> MULTIPLE COMPL <input type="checkbox"/> Other: _____	SUBSEQUENT REPORT OF: REMEDIAL WORK <input type="checkbox"/> ALTER CASING <input type="checkbox"/> COMMENCE DRILLING OPNS. <input type="checkbox"/> PLUG AND ABANDON <input type="checkbox"/> CASING/CEMENT JOB <input type="checkbox"/> Other: <u>Drilling/Cement</u> <input checked="" type="checkbox"/>
---	--

13. Describe proposed or completed operations. (Clearly state all pertinent details, and give pertinent dates, including estimated date of starting any proposed work.) SEE RULE 1103. For Multiple Completions: Attach wellbore diagram of proposed completion or recompletion.  
 10/21/2022. TD 12 1/4" surface hole @ 2105'. Run 9 5/8" 40# J-55 BTC csg to 2100'. Cmt lead w/670 sks EconoCem w/0.125 lb/sk Poly-E-Flake, 3 lb/sk Kol-Seal & 0.2% HR-800, 0.25# D-air, 5% Salt (yld 1.9 cuft/sk @ 12.9 ppg). Tail w/225 sks HalCem C (yld 1.33 cuft/sk @ 14.8 PPG). Displaced w/156 bbl FW. Plug down @ 6:53 A.M. 10/22/22. Floats held. Circ 283 sks cmt to surface. WOC 24 hrs. 10/23/2022 Run CBL, cement confirmed to surface. NU BOPE & test. Test csg to 1550 psi for 30 min. 50 psi drop, held OK. MU BHA, TIH & drill out w/ 8 3/4" bit.  
 See Attached  
 10/18/2022 Spudded well.

**Casing and Cement Program**

Date	String	Fluid Type	Hole Size	Csg Size	Weight lb/ft	Grade	Est TOC	Dpth Set	Sacks	Yield	Class	1" Dpth	Pres Held	Pres Drop	Open Hole
10/21/22	Surf	FreshWater	12.25	9.625	40	J55	1144	2100	225	1.33	C		1550	50	N
10/21/22	Surf	FreshWater	12.25	9.625	40	J55	0	2100	670	1.9	C		1550	50	N

I hereby certify that the information above is true and complete to the best of my knowledge and belief. I further certify that any pit or below-grade tank has been/will be constructed or closed according to NMOCD guidelines , a general permit  or an (attached) alternative OCD-approved plan .

SIGNATURE Electronically Signed TITLE Regulatory manager DATE 12/13/2022  
 Type or print name Joan Harris E-mail address Joan.Harris@SCmid.com Telephone No. 713-515-6916

**For State Use Only:**  
 APPROVED BY: Keith Dziokonski TITLE Senior Petroleum Specialist DATE 2/23/2026 2:29:52 PM

Company: PERMIAN OILFIELD PARTNERS, LLC

Well: Salt Creek AGI #1

Field: AGI: Delaware

County: Lea

State: New Mexico

County: Lea

DIGITAL SONIC LOGGING TOOL

CEMENT BOND LOG / VARIABLE DENSITY LOG

GAMMA RAY / CCL

County: Lea  
 Field: AGI: Delaware  
 Location: 2362' FSL & 595' FWL  
 Well: Salt Creek AGI #1  
 Company: PERMIAN OILFIELD PARTNERS, LLC

Location:	2362' FSL & 595' FWL	Elev.:	K.B. 2939.40 ft
	Lot L, Sec: 21, Twp: 26S, Rge: 36E		G.L. 2927.00 ft
			D.F. 2938.40 ft
Permanent Datum:		Ground Level	2927.00 f
Log Measured From:		Kelly Bushing	12.40 ft
Drilling Measured From:		Kelly Bushing	above Perm.Datum
API Serial No.	30-025-46746	Section:	21
		Township:	26S
		Range:	36E
Logging Date	29-Oct-2022		

Run Number	1B
Depth Driller	7040.00 ft
Schlumberger Depth	7040.00 ft
Bottom Log Interval	2095.00 ft
Top Log Interval	20.00 ft
Casing Fluid Type	Water
Specific Gravity	1.0000 ppm
Density	9.1 lbm/gal
Fluid Level	8.00 ft
BI CASING/TUBING STRING	
BI Size	8.75 in
BI Length	2100.00 ft
BI Weight	7040.00 ft
Casing/Tubing Size	9.625 in
Weight	40 lbm/ft
Grade	N/A
Fluid	0.00 ft
Temperature	2098.00 ft
Recorded Temperatures	92.71 degF
Log Length on Bottom	29-Oct-2022
Time	13:37:00
Location	Midland
Number	9107
Provided By	E.Morrone/ H. Galaviz
Witnessed By	Gary FIFisher

## Disclaimer

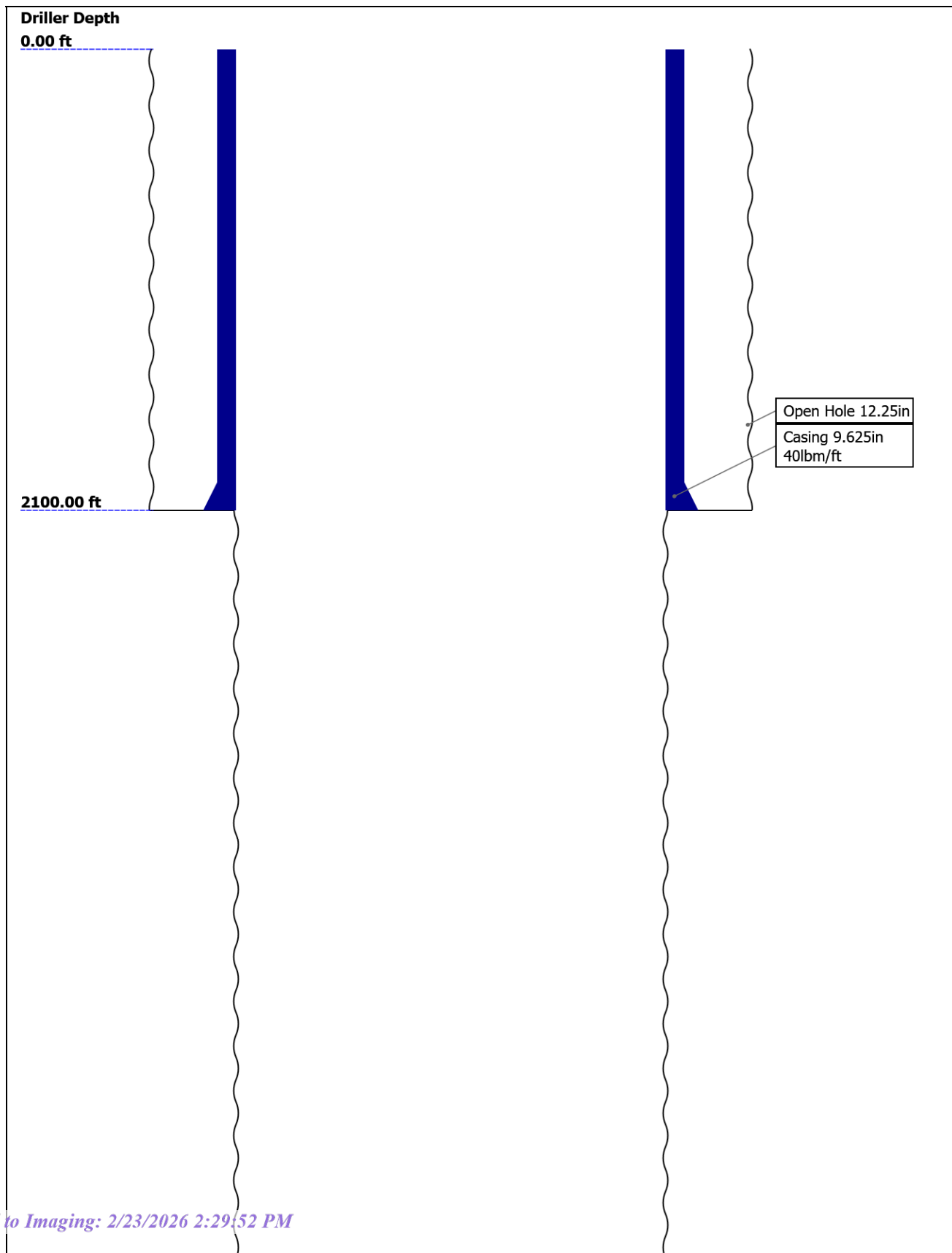
THE USE OF AND RELIANCE UPON THIS RECORDED-DATA BY THE HEREIN NAMED COMPANY (AND ANY OF ITS AFFILIATES, PARTNERS, REPRESENTATIVES, AGENTS, CONSULTANTS AND EMPLOYEES) IS SUBJECT TO THE TERMS AND CONDITIONS AGREED UPON BETWEEN SCHLUMBERGER AND THE COMPANY, INCLUDING: (a) RESTRICTIONS ON USE OF THE RECORDED-DATA; (b) DISCLAIMERS AND WAIVERS OF WARRANTIES AND REPRESENTATIONS REGARDING COMPANY'S USE AND RELIANCE UPON THE RECORDED-DATA; AND (c) CUSTOMER'S FULL AND SOLE RESPONSIBILITY FOR ANY INFERENCE DRAWN OR DECISION MADE IN CONNECTION WITH THE USE OF THIS RECORDED-DATA.

## Contents

1. Header
2. Disclaimer
3. Contents
4. Well Sketch
5. Borehole Size/Casing/Tubing Record
6. Remarks and Equipment Summary
7. Depth Summary
8. CBL Main Pass
  - 8.1 Integration Summary
  - 8.2 Software Version
  - 8.3 Composite Summary
  - 8.4 Log ( Sonic CBL with VDL )
  - 8.5 Parameter Listing
9. 1B Repeat Pass
  - 9.1 Integration Summary
  - 9.2 Software Version
  - 9.3 Composite Summary

10. Tail

## Well Sketch



7040.00 ft

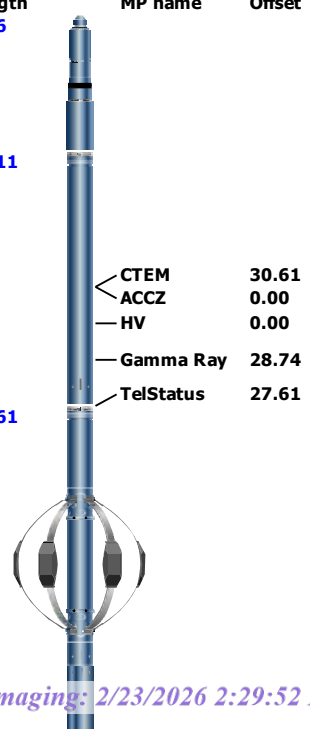
Open Hole 8.75in

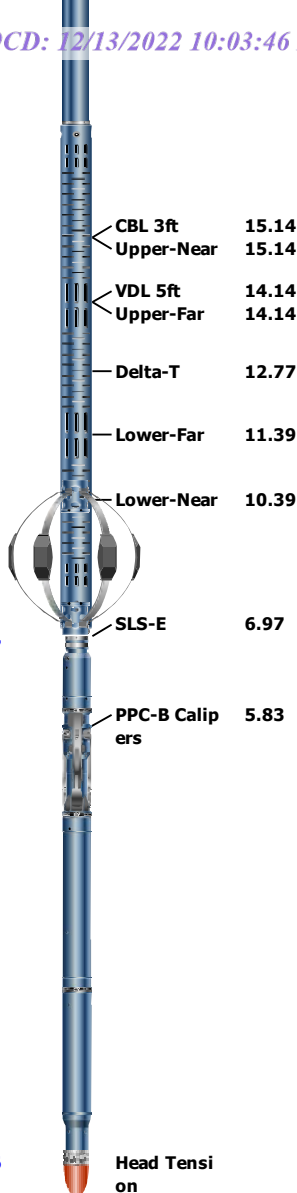
### Borehole Size/Casing/Tubing Record

Bit					
Bit Size ( in )	12.25	8.75			
Top Driller ( ft )	0	2100			
Top Logger ( ft )	0	2100			
Bottom Driller ( ft )	2100	7040			
Bottom Logger ( ft )	2100	7040			
Casing					
Size ( in )	9.625				
Weight ( lbm/ft )	40				
Inner Diameter ( in )	8.835				
Grade	N/A				
Top Driller ( ft )	0				
Top Logger ( ft )	0				
Bottom Driller ( ft )	2100				
Bottom Logger ( ft )	2098				

### Remarks and Equipment Summary

1B: Toolstring				1B: Remarks
<b>Equip name</b> LEH-QT:9106 LEH-QT:9106	<b>Length</b> 37.6	<b>MP name</b>	<b>Offset</b>	Thank you for choosing SLB
<b>EDTC-B:8007</b> EDTH-B:8966 EDTG-A:77273 EDTC-B:8007	<b>34.11</b>			Log quality impacted by borehole rugosity
				Matrix of Limestone with density of 2.71 g/cc
				Tool was run as per tool sketch
				All logging intervals as per client request
				Log correlated to OH TCOM run
				Cycle skipping observed due to good cement
				Tool centralized using PPC on power level 1 and 2 CMEZ
<b>DSLH-H:8307</b> ECH-KH:8365 DSLH-H:8307 SLS-E:8016	<b>27.61</b>			





PPC-B:8199 6.97  
PPC-B:8199

BNS-STD 0.46

Head Tension  
TOOL\_ZERO

Lengths are in ft  
Maximum Outer Diameter = 4.750 in  
Line: Sensor Location, Value: Gating Offset  
All measurements are relative to TOOL\_ZERO

## Depth Summary

	1B		
--	----	--	--

### Depth Measuring Device

Type	IDW-B		
Serial Number			
Calibration Date			
Calibrator Serial Number			
Calibration Cable Type			
Wheel Correction 1	0		
Wheel Correction 2	0		

### Tension Device

Type	CMTD-B/A		
Serial Number			
Calibration Date			
Calibrator Serial Number			
Number of Calibration Points	0		

Type	7-46P-XS		
Serial Number	F721179		
Length	24000.00 ft		
Conveyance Type	Wireline		
Rig Type	Land		

1B:Depth Control Parameters		Depth Control Remarks
Log Sequence	First Log In the Well	Schlumberger depth control procedures followed
Rig Up Length At Surface		IDW used as primary depth control system
Rig Up Length At Bottom		Z-Chart used as secondary depth control system
Rig Up Length Correction		
Stretch Correction		
Tool Zero Check At Surface		

**CBL**

**Main Pass**

**Software Version**

Acquisition System	Version
Maxwell 2022.1	12.1.217729.3100
Application Patch	Wireline_Hotfix-Mandatory-2022.1_12.1.220287
	Wireline_NPD-HFND-2022.1_12.1.219128
	Wireline_TestKit-MSCT-2022.1_12.1.219314

**Composite Summary**

Run Name	Pass Objective	Direction	Top	Bottom	Start	Stop	DSC Mode	Depth Shift	Include Parallel Data
1B	Log[3]:Up	Up	255.74 ft	2095.05 ft	29-Oct-2022 1:37:35 PM	29-Oct-2022 2:12:01 PM	ON	0.50 ft	No
1B	Log[10]:Up	Up	58.28 ft	350.92 ft	29-Oct-2022 4:56:26 PM	29-Oct-2022 5:05:20 PM	ON	0.47 ft	No
1B	Log[12]:Down	Down	33.73 ft	126.59 ft	29-Oct-2022 6:14:47 PM	29-Oct-2022 6:17:10 PM	ON	0.62 ft	No

All depths are referenced to toolstring zero

**Log** Company:PERMIAN OILFIELD PARTNERS, LLC Well:Salt Creek AGI #1 CBL:S017

Description: CBL\_VDL Format: Log ( Sonic CBL with VDL ) Index Scale: 5 in per 100 ft Index Unit: ft Index Type: Measured Depth Creation Date: 29-Oct-2022 18:37:18

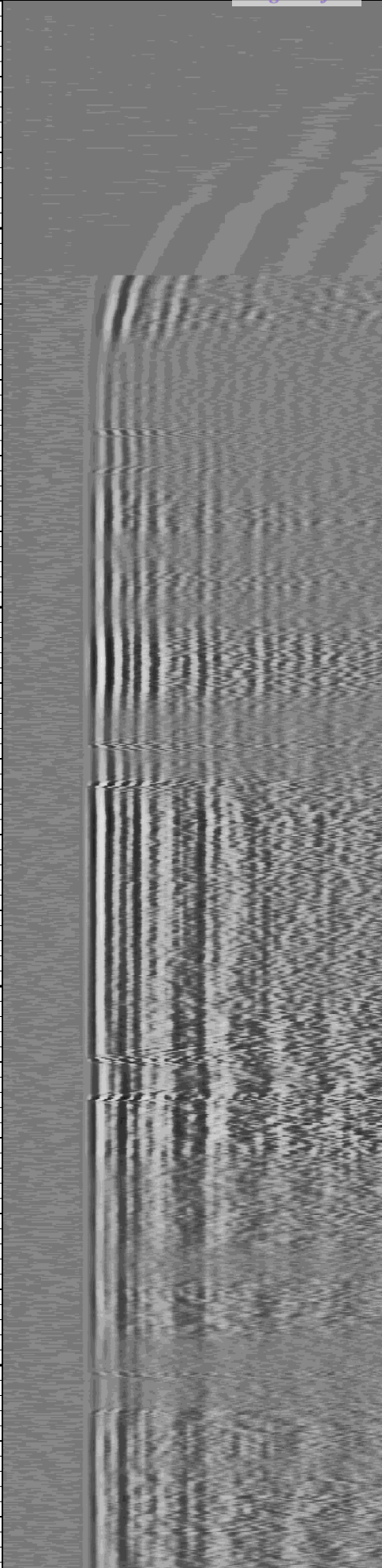
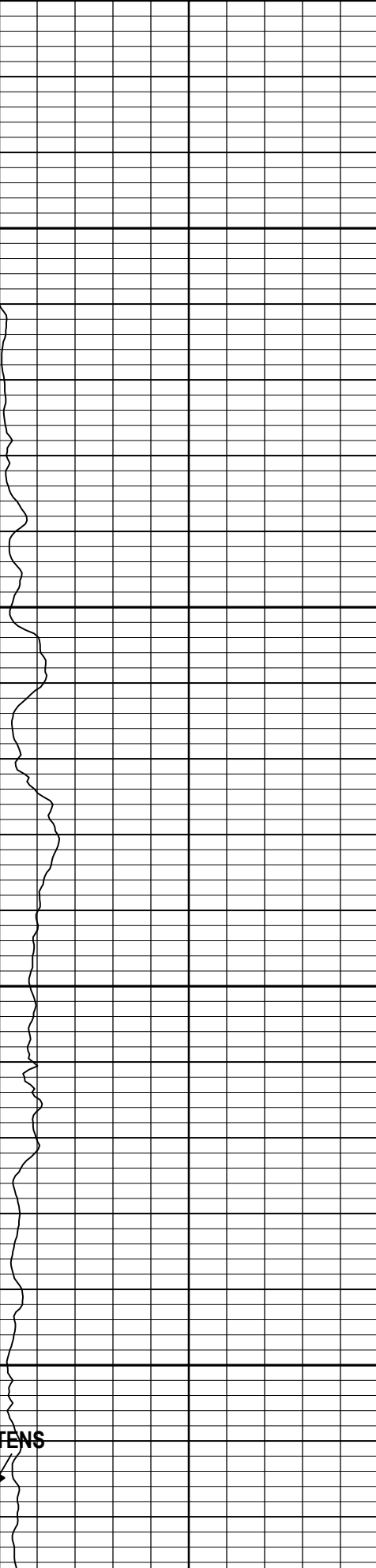
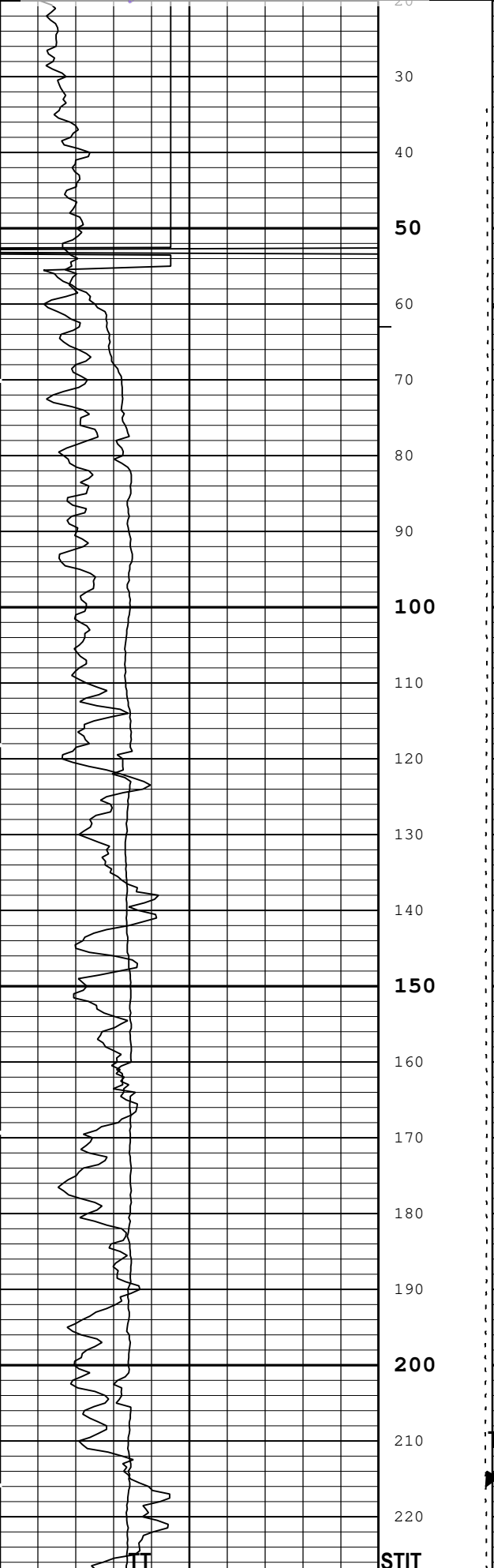
— BIEP - Bond Index Event Pips DSLT-H[1]

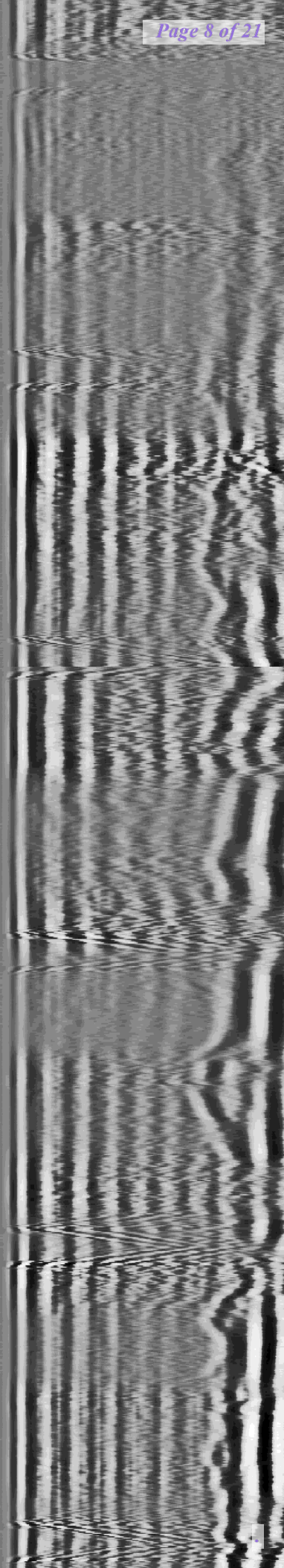
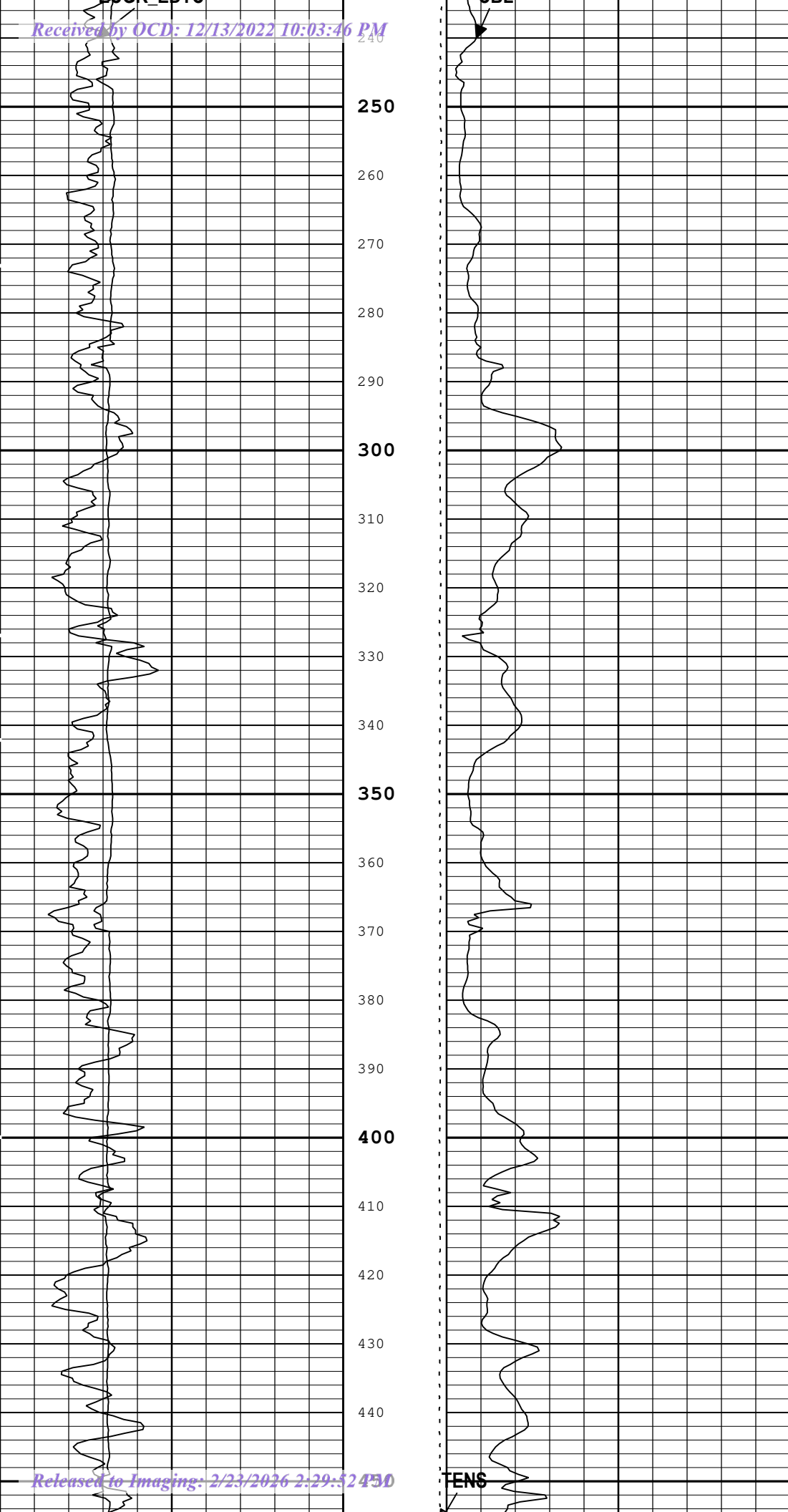
TIME\_1900 - Time Marked every 60.00 (s)

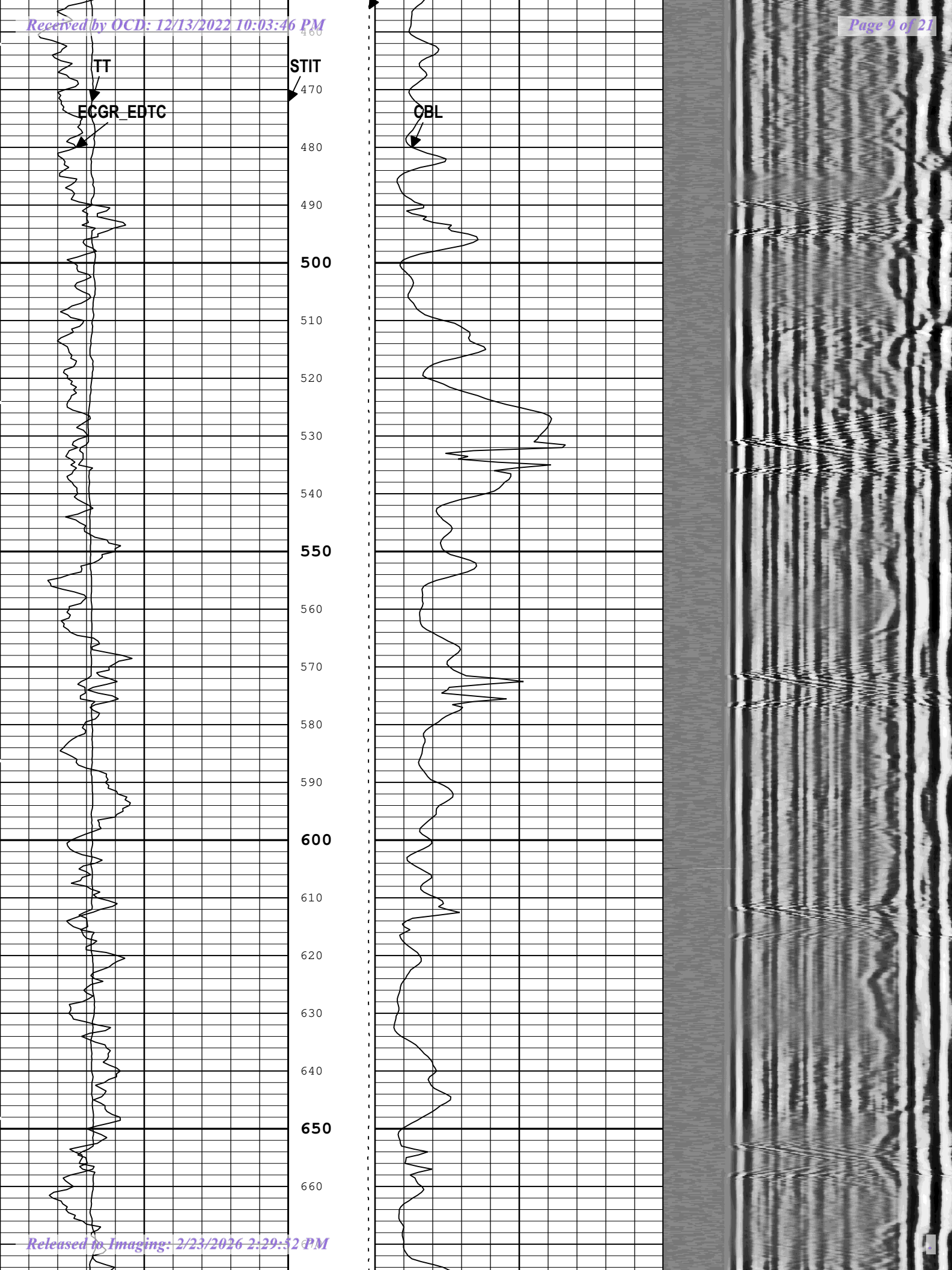
0	gAPI	150	Stuck Tool Indicator, Total (STIT)	0 ft 50
			Cable Tension (TENS)	10000 0 lbf
Gamma Ray (ECGR_EDTC) EDTC-B[1]			Cable Drag	
Transit Time for CBL (TT) DSLT-H[1]			Tool_Tot.	

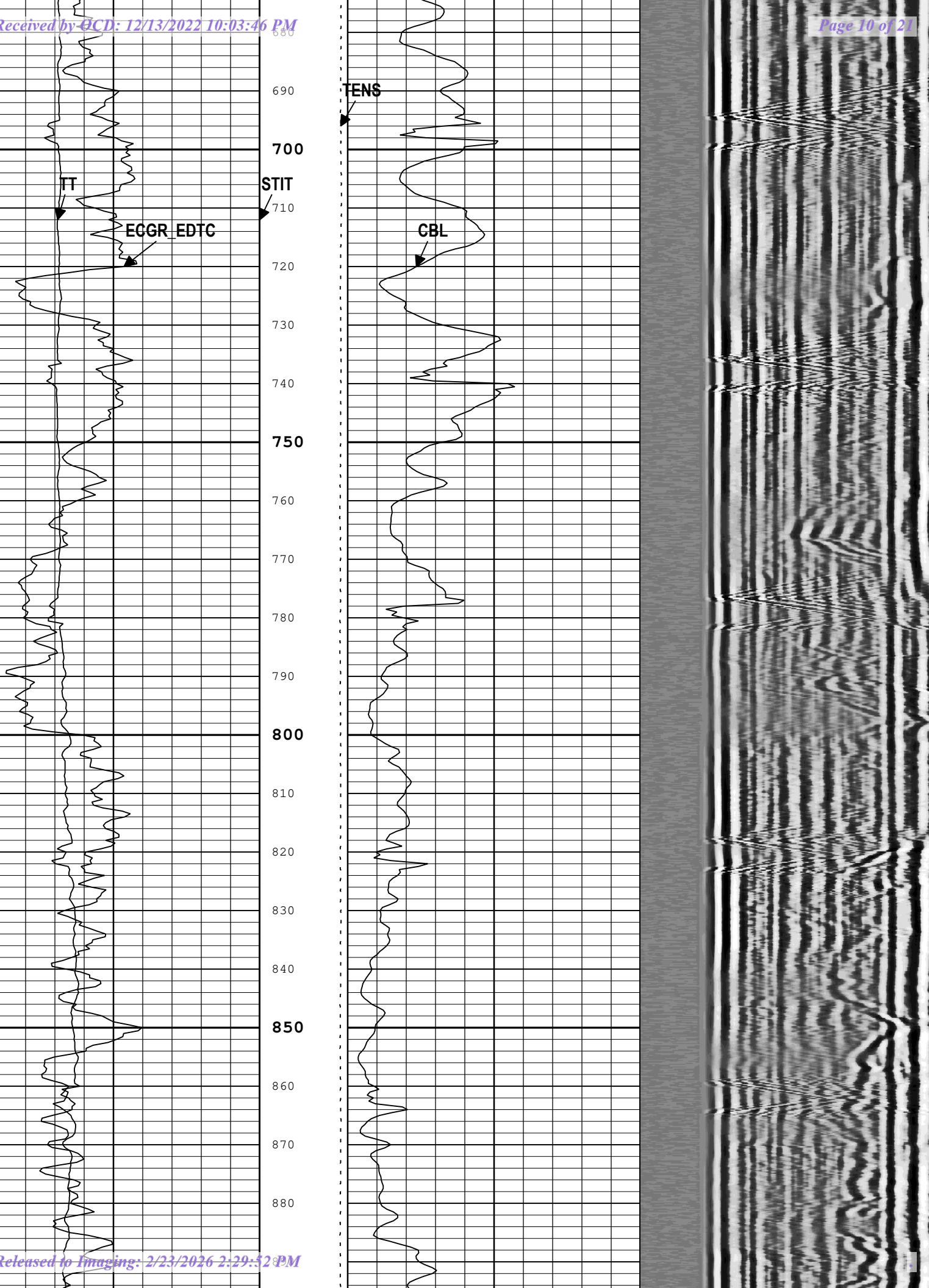
Min Amplitude Max

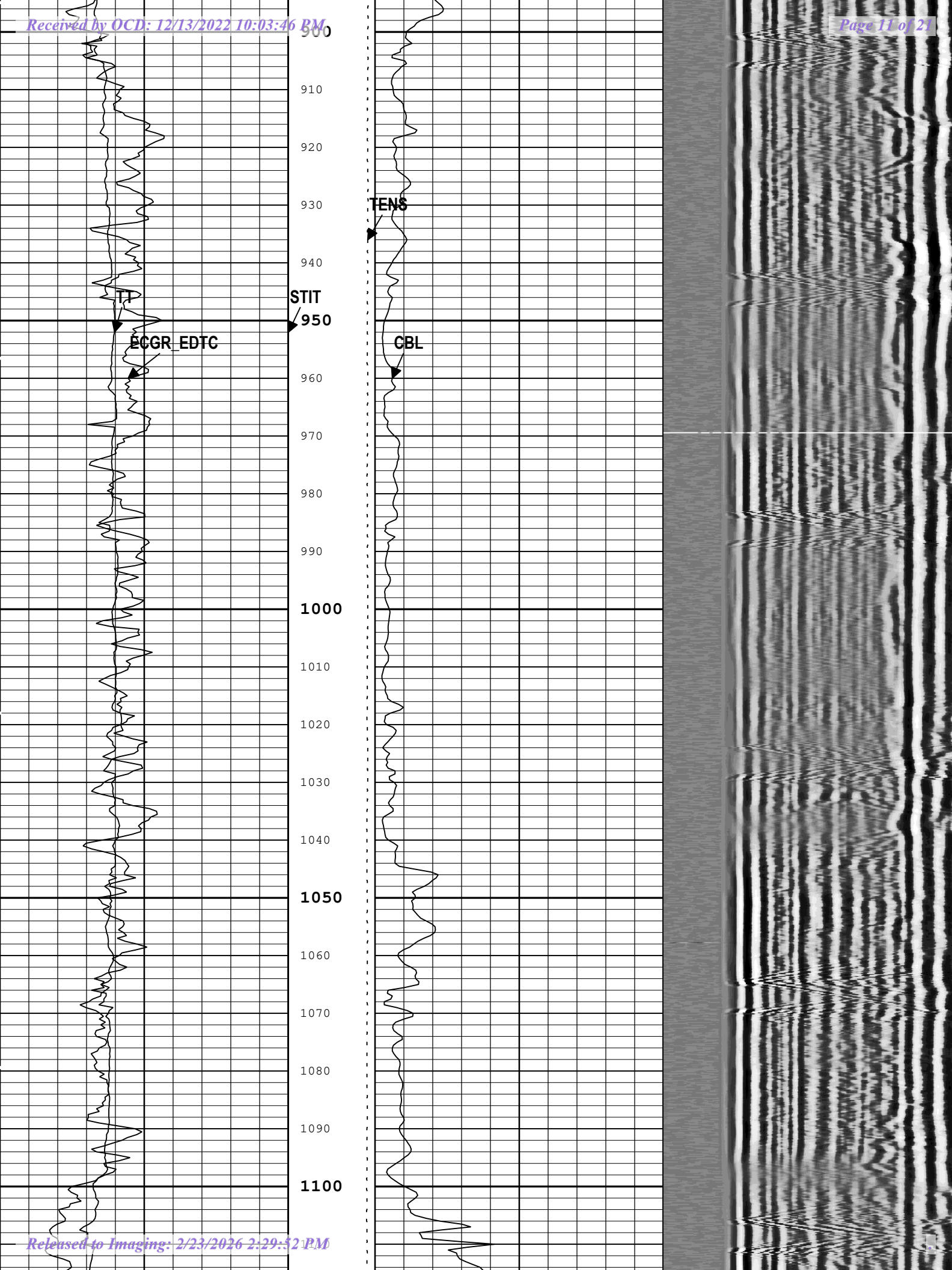
Variable Density Log (VDL) DSLT-H[1]

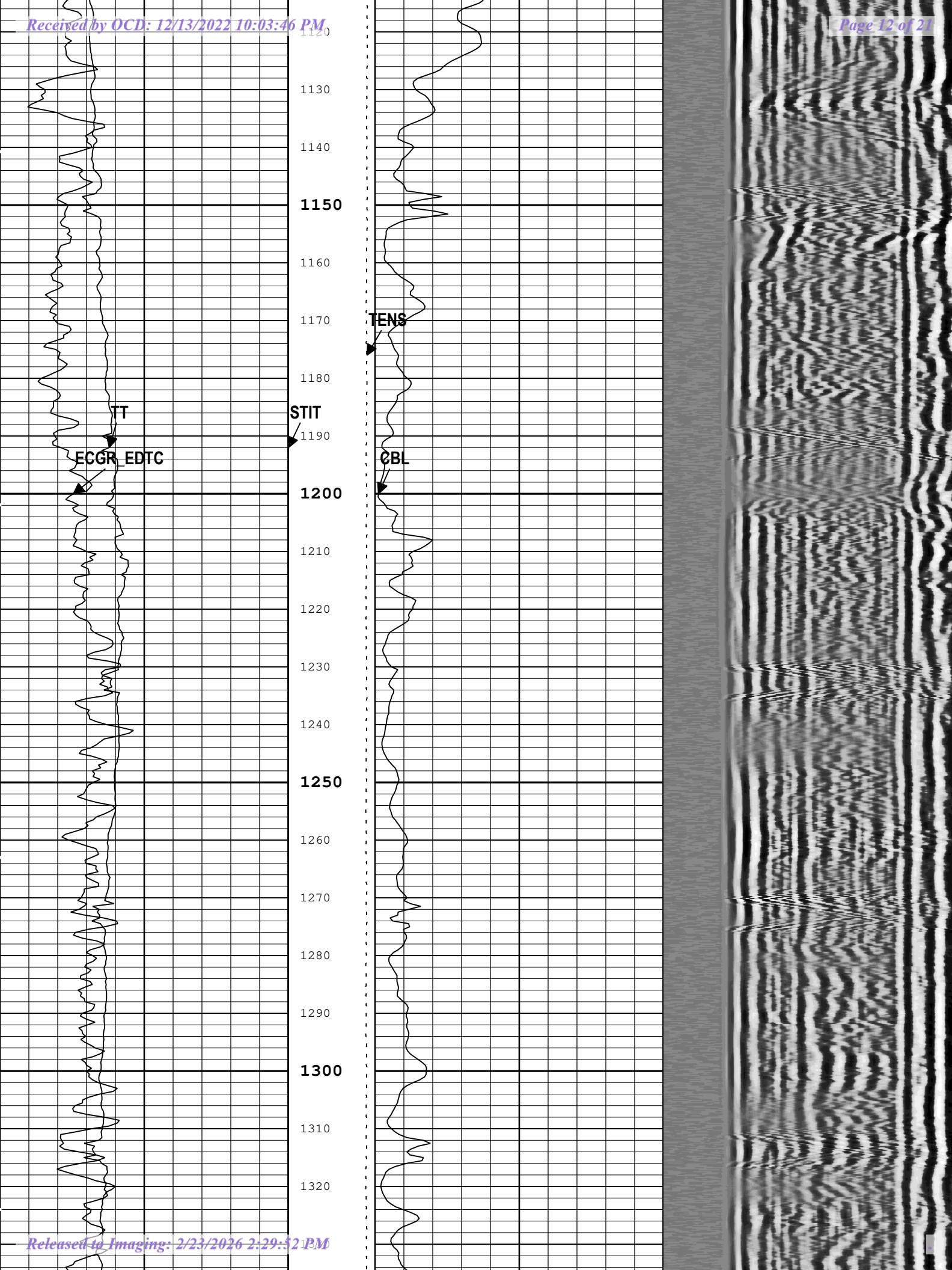












1120  
1130  
1140  
**1150**  
1160  
1170  
1180  
1190  
1200  
1210  
1220  
1230  
1240  
**1250**  
1260  
1270  
1280  
1290  
**1300**  
1310  
1320

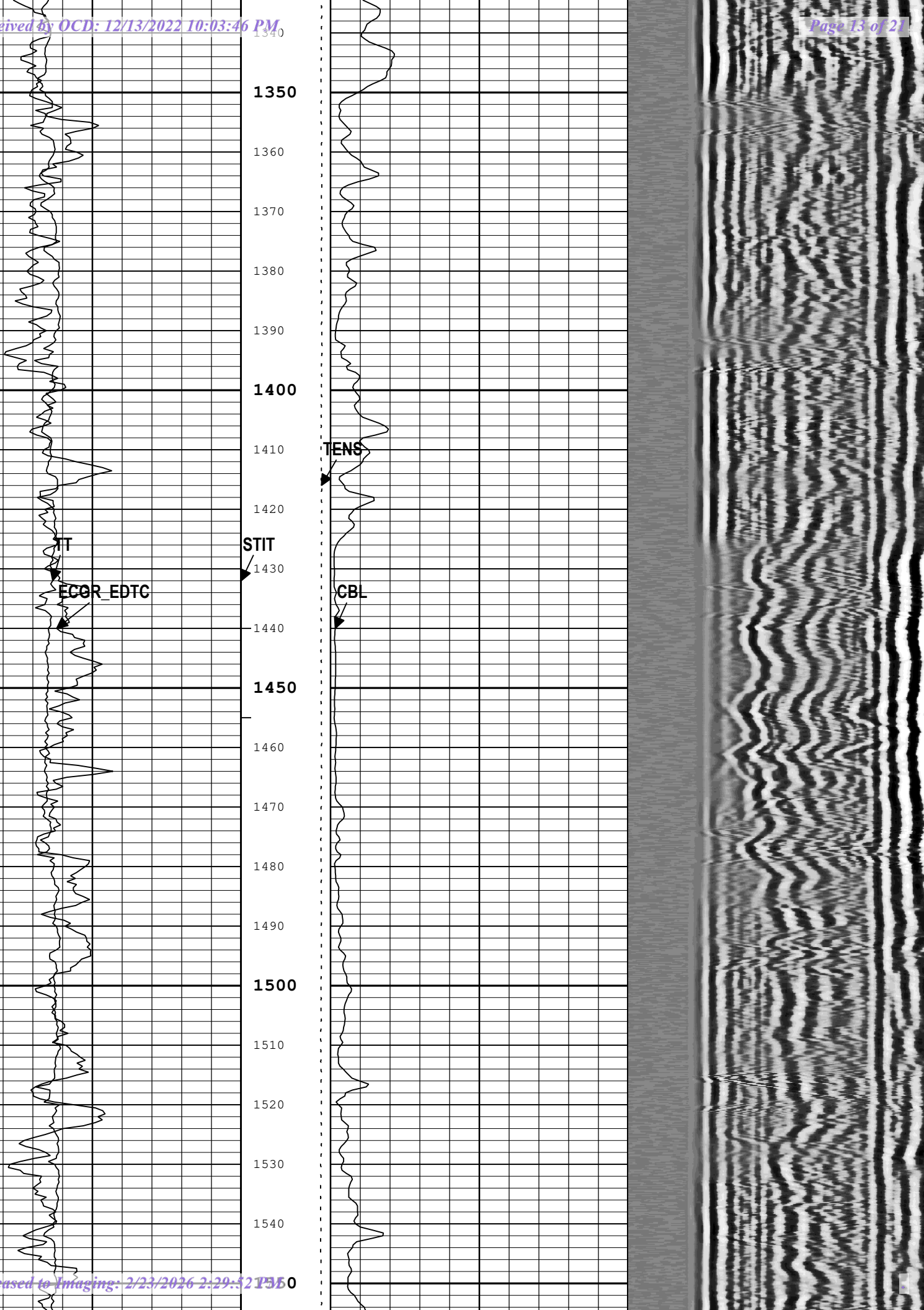
TT

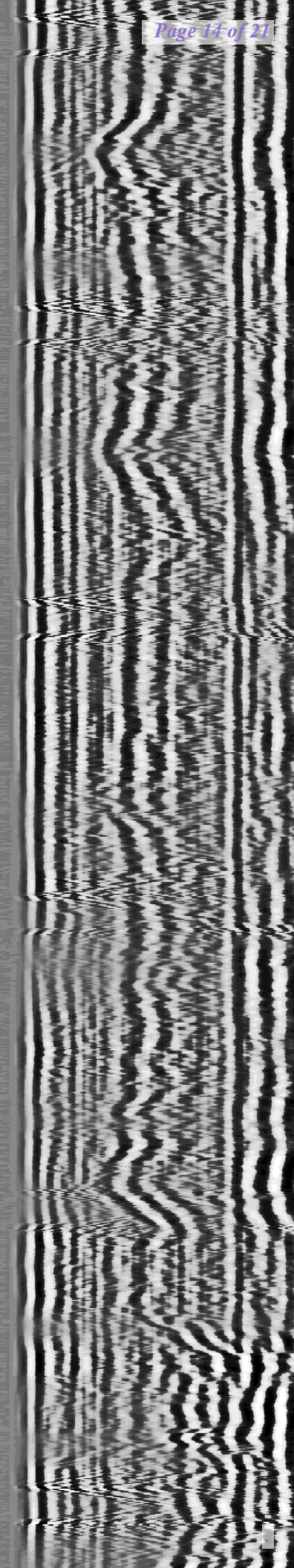
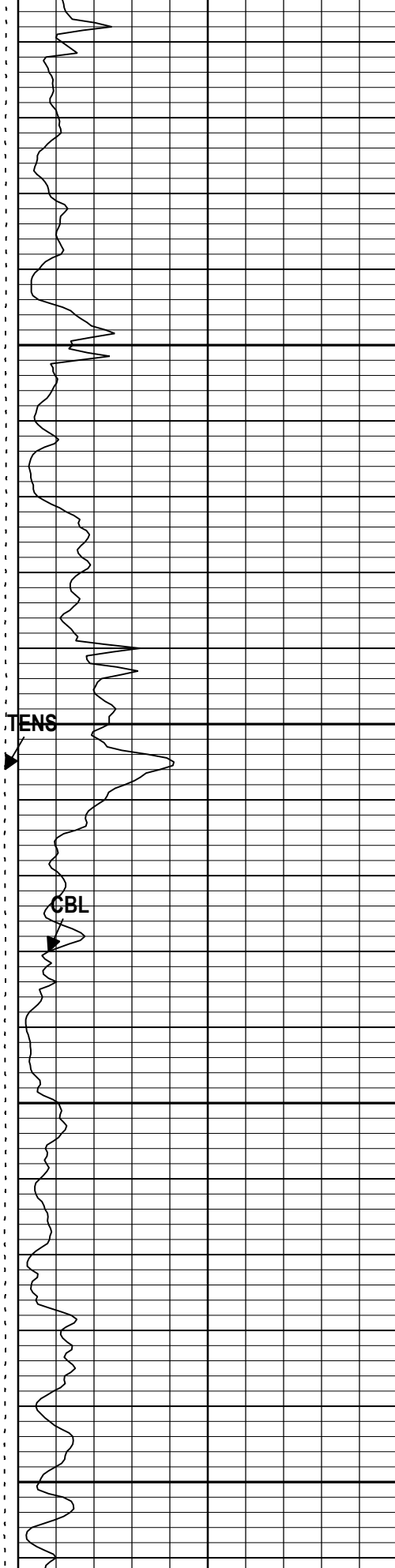
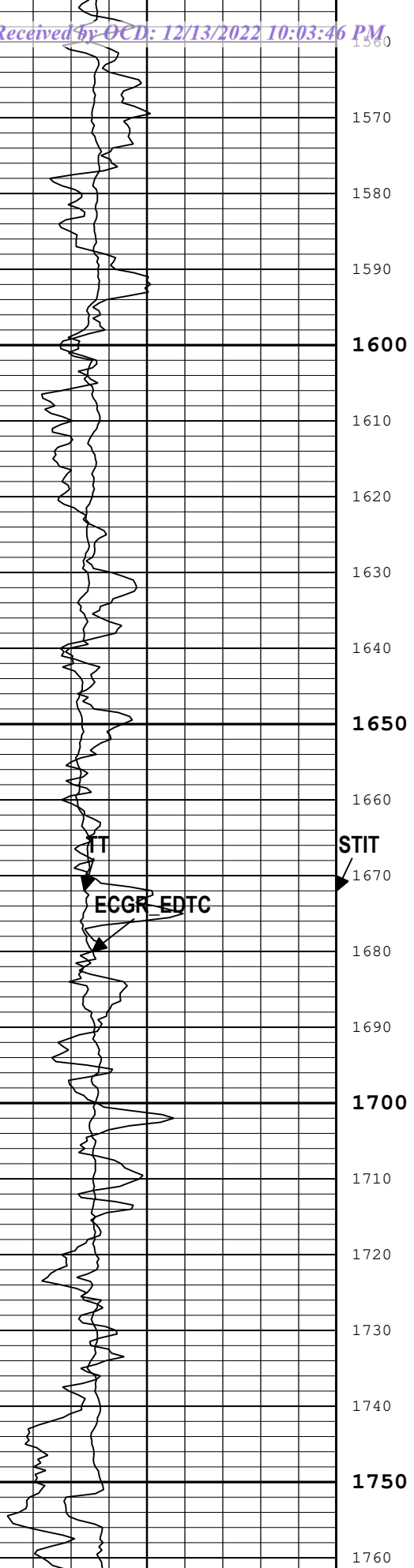
ECGR EDTC

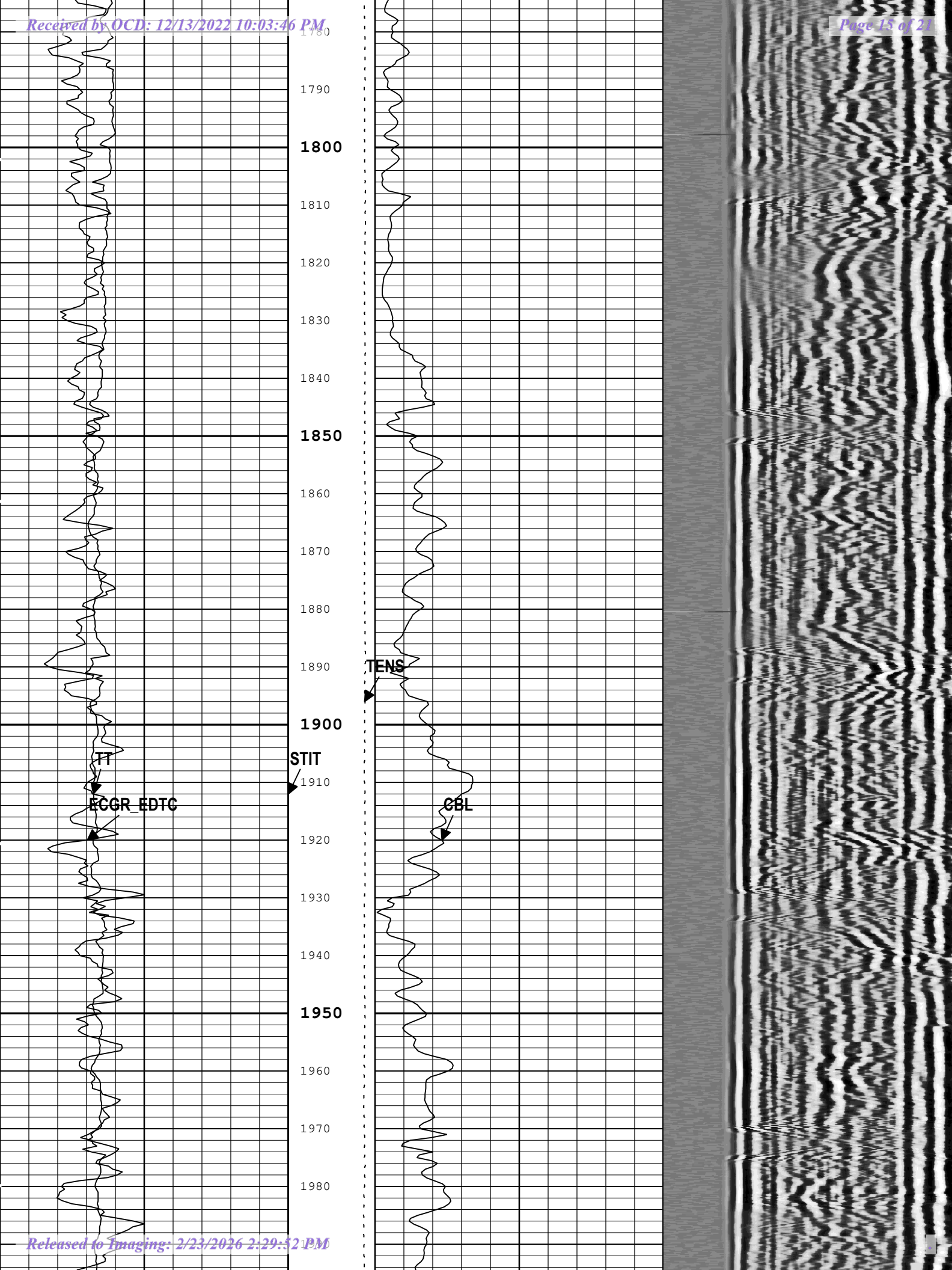
STIT

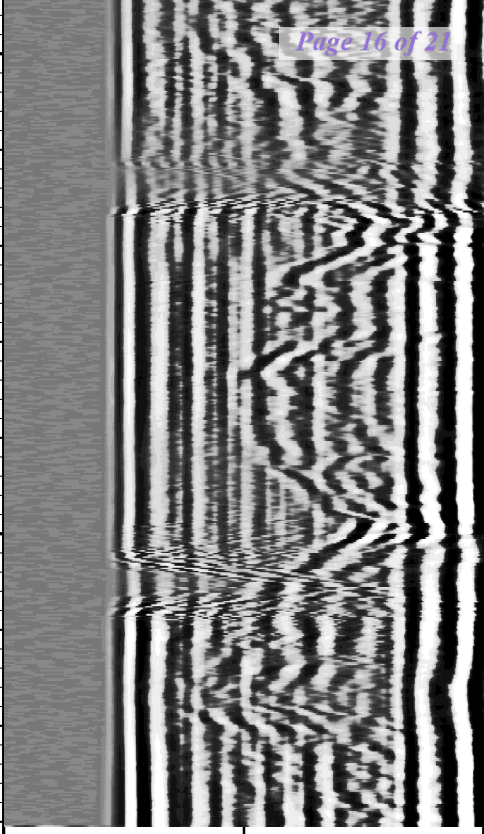
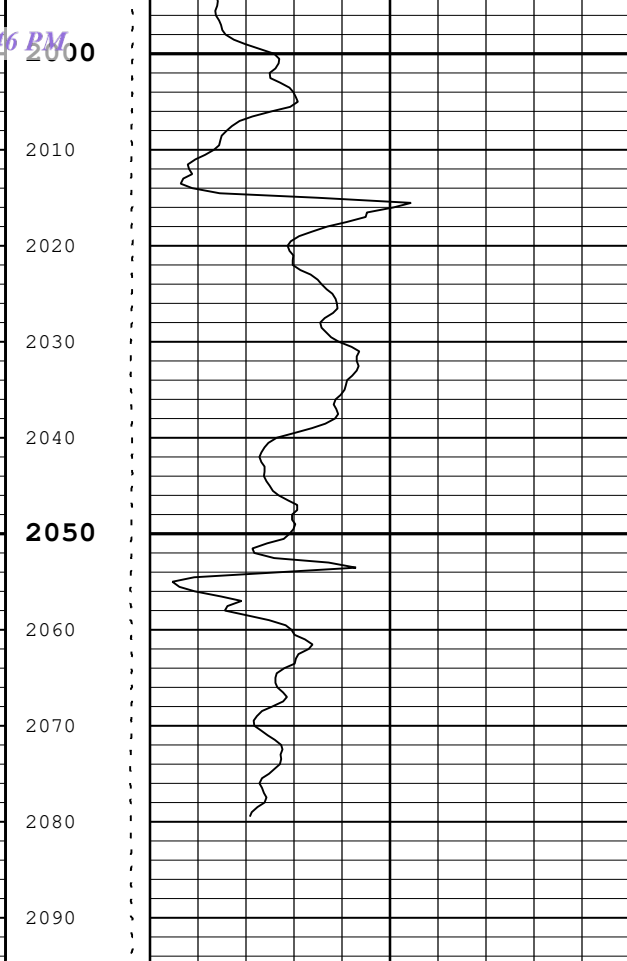
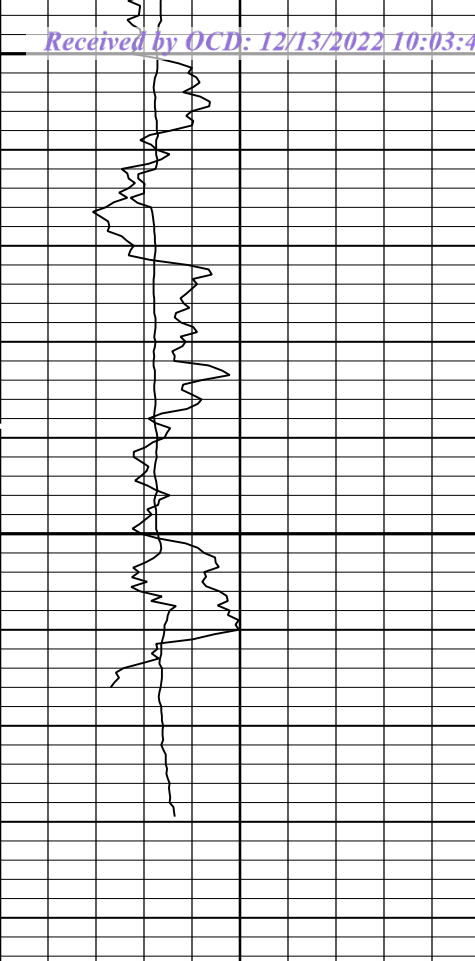
TENS

CBL









Gamma Ray (ECGR_EDTC) EDTC-B[1]	0	gAPI	150
Transit Time for CBL (TT) DSLT-H[1]	400	us	200

Stuck Tool Indicator, Total (STIT)	0	ft	50
CBL Amplitude (CBL) DSLT-H[1]	0	mV	100

Min	Amplitude	Max
200	us	1200

Cable Tension (TENS)	10000	0	lbf
Cable Drag			
Tool_Tot. Drag			

TIME\_1900 - Time Marked every 60.00 (s)

— BIEP - Bond Index Event Pips DSLT-H[1]

Description: CBL\_VDL Format: Log ( Sonic CBL with VDL ) Index Scale: 5 in per 100 ft Index Unit: ft Index Type: Measured Depth Creation Date: 29-Oct-2022 18:37:18

## Channel Processing Parameters

### 1B: Parameters

Parameter	Description	Tool	Value	Unit
BARI(ISSBAR)	Barite Mud Presence Flag	Borehole	No	
BHS	Borehole Status (Open or Cased Hole)	Borehole	Cased	
BS	Bit Size	WLSESSION	12.25	in
CBAF_D	CBL Adjustment Factor	DSLTH	1	
CBLG	CBL Gate Width	DSLTH	50	us
CBLO	Casing Bottom (Logger)	WLSESSION	2098	ft
CBRA	CBL LQC Reference Amplitude in Free Pipe	DSLTH	52	mV

C DEN	Cement Density	EDTC-B	2	g/cm3
<i>Received by OCD: 12/13/2022 10:03:46 PM</i>				
DETE	Delta-T Detection	DSLTH	E1	
DFD	Drilling Fluid Density	Borehole	9.1	lbm/gal
GCSE_DOWN_PASS	Generalized Caliper Selection for WL Log Down Passes	Borehole	BS(RT)	
GCSE_UP_PASS	Generalized Caliper Selection for WL Log Up Passes	Borehole	BS(RT)	
GOBO_CURR	Good Bond in Arbitrary Cement	DSLTH	3.09	mV
MAHTR	Manual High Threshold Reference for first arrival detection	DSLTH	120	
MATT_CURR	Maximum Attenuation in Arbitrary Cement	DSLTH	10.91	dB/ft
MCI	Minimum Cemented Interval for Isolation	DSLTH	14.81	ft
MNHTR	Minimum High Threshold Reference for first arrival detection	DSLTH	100	
MSA	Minimum Sonic Amplitude	DSLTH	1.53	mV
MSA_CURR	Minimum Sonic Amplitude in Arbitrary Cement	DSLTH	1.53	mV
NMSG	Near Minimum Sliding Gate	DSLTH	310	us
SGAD	Sliding Gate Status	DSLTH	Off	

## Tool Control Parameters

### 1B: Parameters

Parameter	Description	Tool	Value	Unit
MODE	DSLTH Acquisition Mode	DSLTH	CBL	
RATE	DSLTH Firing Rate	DSLTH	15 Hz	
DTFS	DSLTH Telemetry Frame Size	DSLTH	536	
MAX_LOG_SPEED	Toolstring Maximum Logging Speed	WLSESSION	4500	ft/h

## 1B

## Repeat Pass

## Software Version

Acquisition System	Version
Maxwell 2022.1	12.1.217729.3100
Application Patch	Wireline_Hotfix-Mandatory-2022.1_12.1.220287
	Wireline_NPD-HFND-2022.1_12.1.219128
	Wireline_TestKit-MSCT-2022.1_12.1.219314

## Pass Summary

Run Name	Pass Objective	Direction	Top	Bottom	Start	Stop	DSC Mode	Depth Shift	Include Parallel Data
1B	Log[2]:Up	Up	1719.53 ft	2093.14 ft	29-Oct-2022 1:26:20 PM	29-Oct-2022 1:35:31 PM	ON	0.16 ft	No

All depths are referenced to toolstring zero

## Log

Company: PERMIAN OILFIELD PARTNERS, LLC    Well: Salt Creek AGI #1  
1B: Log[2]:Up:S017

Description: CBL\_VDL    Format: Log ( Sonic CBL with VDL )    Index Scale: 5 in per 100 ft    Index Unit: ft    Index Type: Measured Depth    Creation Date: 29-Oct-2022 18:37:21

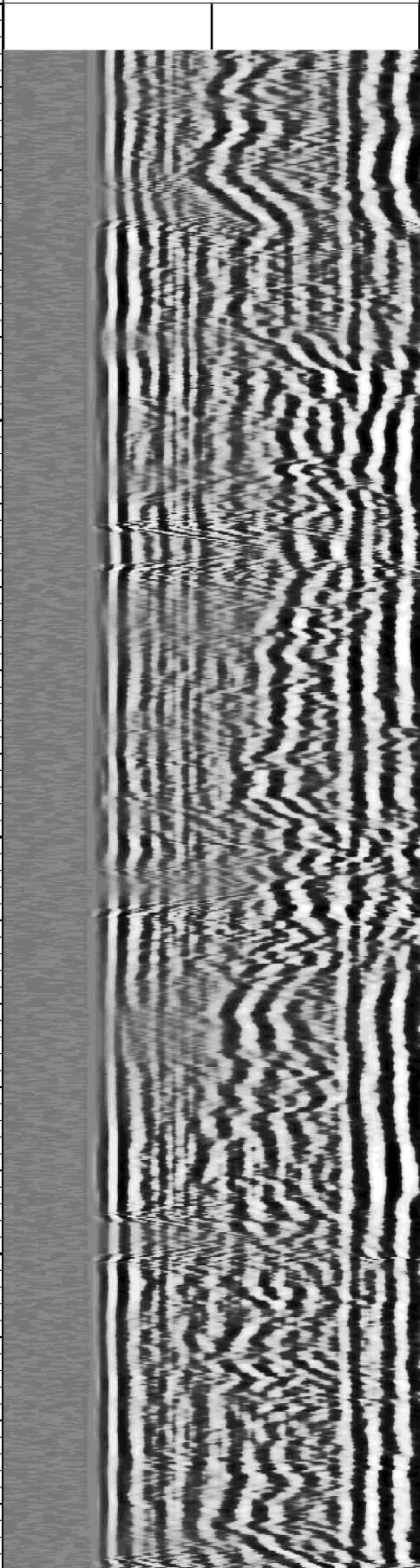
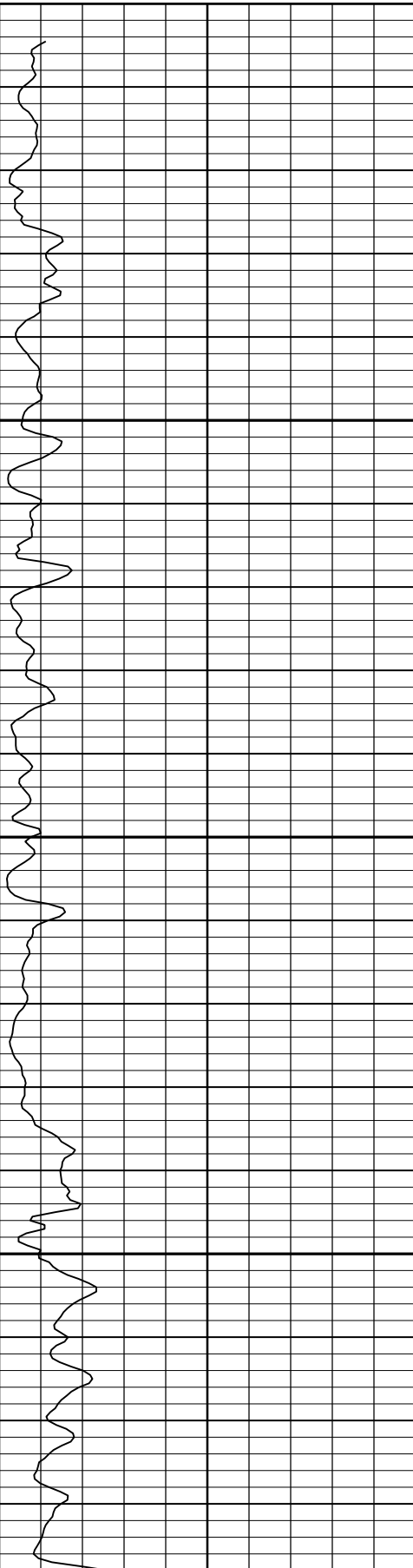
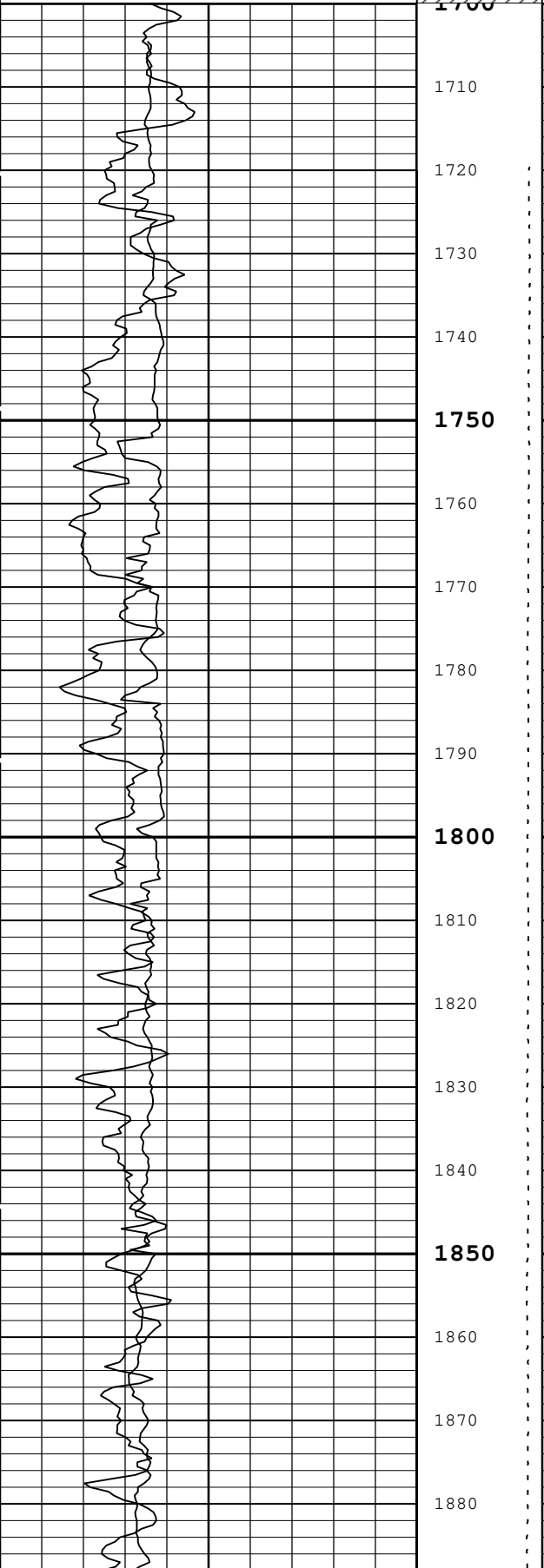
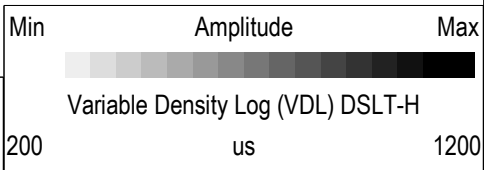
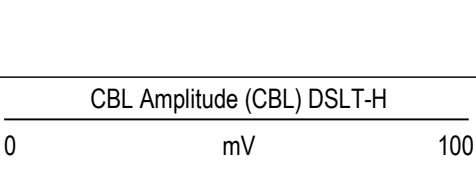
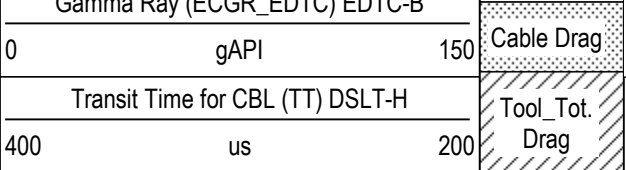
TIME\_1900 - Time Marked every 60.00 (s)

└─ BIEP - Bond Index Event Pips DSLTH

Stuck Tool Indicator, Total (STIT)
0    ft    50

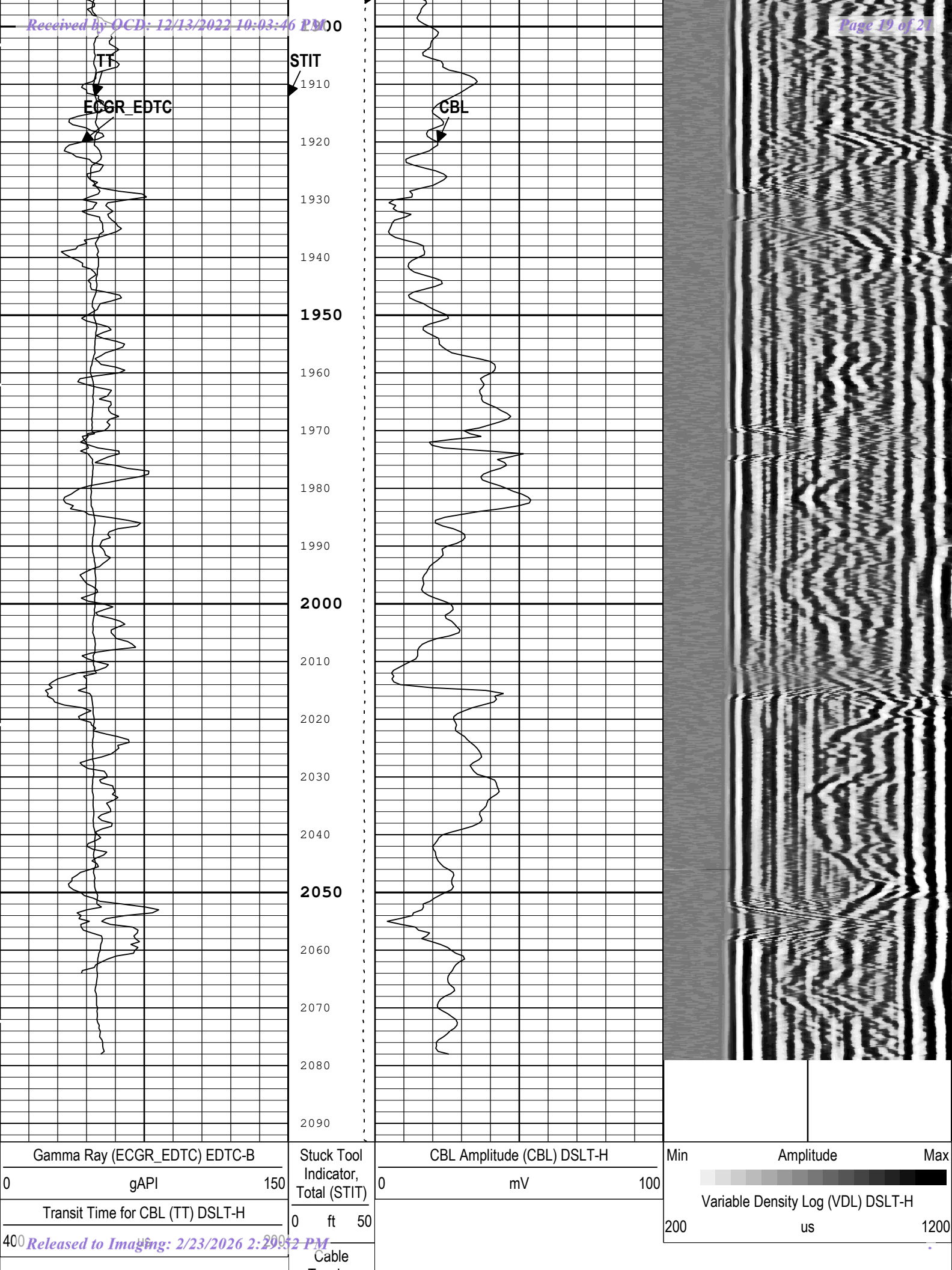
Cable Tension
10000    0

Gamma Ray (ECGR\_EDTC) EDTC-B



1700  
 1710  
 1720  
 1730  
 1740  
 1750  
 1760  
 1770  
 1780  
 1790  
 1800  
 1810  
 1820  
 1830  
 1840  
 1850  
 1860  
 1870  
 1880

TENS



TT

ECGR\_EDTC

STIT

CBL

1950

2000

2050

Gamma Ray (ECGR\_EDTC) EDTC-B

0 gAPI 150

Transit Time for CBL (TT) DSLT-H

0 200 400 us

Released to Imaging: 2/23/2026 2:29:52 PM

Stuck Tool Indicator, Total (STIT)

0 ft 50

Cable

CBL Amplitude (CBL) DSLT-H

0 mV 100

Min Amplitude Max

Variable Density Log (VDL) DSLT-H

200 us 1200

Tension	0
10000	0
lbf	
Cable Drag	
Tool_Tot. Drag	

— BIEP - Bond Index Event Pips DSLT-H

TIME\_1900 - Time Marked every 60.00 (s)

Description: CBL\_VDL Format: Log ( Sonic CBL with VDL ) Index Scale: 5 in per 100 ft Index Unit: ft Index Type: Measured Depth Creation Date: 29-Oct-2022 18:37:22

## Channel Processing Parameters

### 1B: Parameters

Parameter	Description	Tool	Value	Unit
BARI(ISSBAR)	Barite Mud Presence Flag	Borehole	No	
BHS	Borehole Status (Open or Cased Hole)	Borehole	Cased	
BS	Bit Size	WLSESSION	12.25	in
CBAF_D	CBL Adjustment Factor	DSLTH	1	
CBLG	CBL Gate Width	DSLTH	50	us
CBLO	Casing Bottom (Logger)	WLSESSION	2098	ft
CBRA	CBL LQC Reference Amplitude in Free Pipe	DSLTH	52	mV
CDEN	Cement Density	EDTC-B	2	g/cm3
DETE	Delta-T Detection	DSLTH	E1	
DFD	Drilling Fluid Density	Borehole	9.1	lbm/gal
GCSE_DOWN_PASS	Generalized Caliper Selection for WL Log Down Passes	Borehole	BS(RT)	
GCSE_UP_PASS	Generalized Caliper Selection for WL Log Up Passes	Borehole	BS(RT)	
GOBO_CURR	Good Bond in Arbitrary Cement	DSLTH	3.09	mV
MAHTR	Manual High Threshold Reference for first arrival detection	DSLTH	120	
MATT_CURR	Maximum Attenuation in Arbitrary Cement	DSLTH	10.91	dB/ft
MCI	Minimum Cemented Interval for Isolation	DSLTH	14.81	ft
MNHTR	Minimum High Threshold Reference for first arrival detection	DSLTH	100	
MSA	Minimum Sonic Amplitude	DSLTH	1.53	mV
MSA_CURR	Minimum Sonic Amplitude in Arbitrary Cement	DSLTH	1.53	mV
NMSG	Near Minimum Sliding Gate	DSLTH	310	us
SGAD	Sliding Gate Status	DSLTH	Off	

## Tool Control Parameters

### 1B: Parameters

Parameter	Description	Tool	Value	Unit
MODE	DSLTH Acquisition Mode	DSLTH	CBL	
RATE	DSLTH Firing Rate	DSLTH	15 Hz	
DTFS	DSLTH Telemetry Frame Size	DSLTH	536	
MAX_LOG_SPEED	Toolstring Maximum Logging Speed	WLSESSION	4500	ft/h

Well: Salt Creek AGI #1

Field: AGI: Delaware

County: Lea

State: New Mexico

DIGITAL SONIC LOGGING TOOL  
CEMENT BOND LOG / VARIABLE DENSITY LOG  
GAMMA RAY / CCL