

U.S. Department of the Interior  
BUREAU OF LAND MANAGEMENT

<b>Well Name:</b> MIDDLE MESA SWD	<b>Well Location:</b> T32N / R7W / SEC 25 / NESW / 36.94806 / -107.52242	<b>County or Parish/State:</b> SAN JUAN / NM
<b>Well Number:</b> 1 SWD	<b>Type of Well:</b> INJECTION - ENHANCED RECOVERY	<b>Allottee or Tribe Name:</b>
<b>Lease Number:</b> NMNM2996	<b>Unit or CA Name:</b>	<b>Unit or CA Number:</b>
<b>US Well Number:</b> 3004527004	<b>Operator:</b> HILCORP ENERGY COMPANY	

**Subsequent Report**

**Sundry ID:** 2896003

**Type of Submission:** Subsequent Report

**Type of Action:** Workover Operations

**Date Sundry Submitted:** 02/16/2026

**Time Sundry Submitted:** 06:38

**Date Operation Actually Began:** 01/22/2026

**Actual Procedure:** Hilcorp Energy Company has completed the tubing repair on the subject well on 2/13/2026 per the attached daily reports. An MIT and BH test were performed. PT to 560 psi for 30 minutes, good test. Witness and passed by Rooster Foster, NMOCD. Please see the attached chart and BH test.

**SR Attachments**

**Actual Procedure**

MIDDLE\_MESA\_\_1\_SWD\_SR\_Tubing\_Repair\_BLM\_Submitted\_20260216063838.pdf

Well Name: MIDDLE MESA SWD

Well Location: T32N / R7W / SEC 25 /  
NESW / 36.94806 / -107.52242County or Parish/State: SAN  
JUAN / NM

Well Number: 1 SWD

Type of Well: INJECTION - ENHANCED  
RECOVERY

Allottee or Tribe Name:

Lease Number: NMNM2996

Unit or CA Name:

Unit or CA Number:

US Well Number: 3004527004

Operator: HILCORP ENERGY  
COMPANY

## Operator

I certify that the foregoing is true and correct. Title 18 U.S.C. Section 1001 and Title 43 U.S.C. Section 1212, make it a crime for any person knowingly and willfully to make to any department or agency of the United States any false, fictitious or fraudulent statements or representations as to any matter within its jurisdiction. Electronic submission of Sundry Notices through this system satisfies regulations requiring a

Operator Electronic Signature: PRISCILLA SHORTY

Signed on: FEB 16, 2026 06:38 AM

Name: HILCORP ENERGY COMPANY

Title: Regulatory Technician

Street Address: 382 ROAD 3100

City: AZTEC

State: NM

Phone: (505) 324-5188

Email address: PSHORTY@HILCORP.COM

## Field

Representative Name:

Street Address:

City:

State:

Zip:

Phone:

Email address:

## BLM Point of Contact

BLM POC Name: KENNETH G RENNICK

BLM POC Title: Petroleum Engineer

BLM POC Phone: 5055647742

BLM POC Email Address: krennick@blm.gov

Disposition: Accepted

Disposition Date: 02/25/2026

Signature: Kenneth Rennick

**MIDDLE MESA 1 SWD****30.045.27004****REPLACE TUBING**

**1/21/2026** – MOB RIG AND EQUIPMENT TO MIDDLE MESA #1 SWD. MIRU RIG AND EQUIPMENT. SISW. SDFN.

**1/22/2026** - CK PRESSURES. SITP- 350 PSI. SICP- 0 PSI. SIBHP 0 PSI. NO BLOW DOWN. KILL TBG W/ 90 BBLS OF 10# BRINE. N/D WELLHEAD, HEAVILY CORRODED WELLHEAD BOLTS AND LOCK DOWN PINS(WILL NEED TO REPLACE BOLTS AND LOCKDOWN PINS). N/U 11" MUD CROSS AND BOP. SHELL TEST BOP. GOOD TEST. ATTEMPT TO PULL TBG HANGER TO SURFACE, UNSUCCESSFUL. WORK STUCK TBG HANGER UNTIL JARS ARRIVED. TIE BACK RIG TO SINGLE LINE. M/U TOOLS, JAR ON HANGER FOR 30 MIN UP TO 60K AND FREED UP. L/D TOOLS. WORK TBG UP TO 110K, 46" OF MOVEMENT. R/U POWER SWIVEL. WORK TBG UP TO 110K, NO ROTATION. CALL IN RESULTS TO HEC ENGINEER. KEEP WORKING TBG UP TO 110K. NO ADDITIONAL MOVEMENT. R/D POWER SWIVEL. SISW. SDFN.

**1/23/2026** - CK PRESSURES. SITP- 0 PSI. SICP- 0 PSI. SIBHP 0 PSI. NO BLOW DOWN. R/D RIG FLOOR. ND 11" BOP AND MUD CROSS. N/U SINGLE BOP. PULL TBG HANGER TO SURFACE AND REMOVE. STRIP OVER BOP AND MUD CROSS. R/U RIG FLOOR. R/U POWER SWIVEL. WORK STUCK TBG FROM 35K UP TO 110K FOR 1.5" HRS, NO ROTATION OR ADDITIONAL MOVEMENT. R/D POWER SWIVEL. R/U WIRELINE. RIH W/ 2 1/2" GR AND TAG @7527'. POOH W/ 2 1/2" GR. RIH W/ 1 7/16" GR TAG @6692'. POOH W/ 1 7/16" GR. RIH W/ BACK OFF SHOT, TAG @6692', PUMPED 20 BBLS DOWN TBG AND WAS ABLE TO GET PAST 6692'. TAGGED UP AGAIN @8220'. CALL IN TO HEC ENGINEER. POOH TO 8097'. SHOT BACKOFF SHOT AND BACKED OFF TBG @8097'. POOH W/ WIRELINE. R/D WIRELINE. L/D TBG PUPS. SISW. SDFWE.

**1/26/2026** - CK PRESSURES. SITP- 0 PSI. SICP- 350 PSI. SIBHP 0 PSI. SIIP. 0 PSI. NO BLOW DOWN. PUMP 240 BBLS OF 10# BRINE DOWN CASING AND 70 BBLS DOWN TBG. L/D 30 JNTS AND TIED BACK RIG TO DOUBLE LINE. L/D A TOTAL OF 265 JNTS OF 3 1/2" TBG, BACKED OFF TBG COLLAR, PIN LOOKING UP. 23 JNTS LEFT DOWNHOLE. STARTED TO SEE ~1/8" TO 1/4" OF SCALE INSIDE OF JNT #180-265(5700'-8097'). N/D 11" GRANT HEAD. N/U 7 1/16" ANNULAR AND WASHINGTON HEAD. CHANGE OUT HANDLING TOOLS FOR 2 7/8" TBG. PREP TBG FOR P/U. P/U FISHING TOOLS. P/U TBG TO 3370'. SISW. SDFN.

**1/27/2026** - CK PRESSURES. SITP- 0 PSI. SICP- 0 PSI. SIBHP 0 PSI. SIIP. 0 PSI. NO BLOW DOWN. TOO H W/ TBG AND DC'S. ADD STOP TO OVERSHOT. TIH W/ FISHING TOOLS AND TBG FROM DERRICK. P/U TBG TO 8077'. TIE BACK RIG TO SINGLE LINE. P/U 1 JNT AND LATCH ONTO FISH @8090', JAR ON FISH UP TO 110K FOR 1.5 HRS. R/U POWER SWIVEL, ROTATE TBG TO TRY AND RELEASE SEAL ASSEMBLY. TBG FREED UP. R/D POWER SWIVEL. TOO H W/ TBG AND DC'S, L/D JAR AND OVERSHOT. NO FISH. GRAPPLE STILL GOOD. SDFN.

**MIDDLE MESA 1 SWD****30.045.27004****REPLACE TUBING**

**1/28/2026** - CK PRESSURES. SITP- 0 PSI. SICP- 0 PSI. SIBHP 0 PSI. SIIP. 0 PSI. NO BLOW DOWN. M/U OVERSHOT AND JARS, TIH W/ DC'S AND TBG FROM DERRICK. TIE BACK RIG TO SINGLE LINE. P/U PUPS AND LATCH ONTO FISH @8090', JAR ON FISH UP TO 110K, NO CHANGE. R/U WIRELINE. RIH W/ BACK OFF SHOT, TAG @8214', POOH TO TBG COLLAR @8187'. PULL 10K OVER S.W, ROTATE TBG 5 TURNS TO THE RIGHT AND RELEASED GRAPPLE. POOH W/ WIRELINE TO 7500'. RIH W/ TBG AND LATCH ONTO FISH. RIH W/ WIRELINE TO 8187'. ROTATE TBG TO THE RIGHT 4 TURNS. ROTATE TBG 3 1/2" TURNS TO THE LEFT AND TBG BACKED OFF, LOST 10K S.W. POOH W/ WIRELINE (SEEN BACKED OFF TBG @7100'). R/D WIRELINE. ATTEMPT TO SCREW BACK INTO TBG, UNSUCCESSFUL. TOO H W/ 5 STANDS. SDFN.

**1/29/2026** - CK PRESSURES. SITP- 0 PSI. SICP- 0 PSI. SIBHP 0 PSI. SIIP. 0 PSI. NO BLOW DOWN. TOO H W/ TBG, BAD THREADS ON BOTTOM JNT. LEFT 22 JNTS, AND DC'S DOWNHOLE. M/U OVER SHOT W/ 3 1/2" GRAPPLE. TIH W/ TBG TORQUING UP EVERY CONNECTION AND LATCH ONTO FISH. PULL 10K OVER S.W AND RELEASE GRAPPLE ON 3 1/2" TBG. TOO H W/ 70 STANDS. EOT @3500'. CHANGE OUT DRILL LINE ON RIG. SDFN.

**1/30/2026** - CK PRESSURES. SITP- 0 PSI. SICP- 0 PSI. SIBHP 0 PSI. SIIP. 0 PSI. NO BLOW DOWN. TOO H W/ TBG AND DC'S. L/D JARS AND OVERSHOTS. P/U CUTTER AND 6 JNTS OF WASH PIPE. TIH W/ TBG FROM DERRICK TO 8066'. R/U POWER SWIVEL. P/U 7 JNTS W/ POWER SWIVEL AND CUT 3 1/2" TBG @8278'(3 MIN). L/D 2 JNTS W/ POWER SWIVEL. R/D POWER SWIVEL. L/D 5 JNTS, TOO H W/ 110 STANDS. EOT @1300'. SISW. DRAIN EQUIPMENT. DEBRIEF CREW. SDFW.

**2/2/2026** - CK PRESSURES. SITP- 0 PSI. SICP- 0 PSI. SIBHP 0 PSI. SIIP. 0 PSI. NO BLOW DOWN. TOO H W/ TBG AND DC'S TO WASH PIPE. L/D 5 JNTS OF 3 1/2" TBG (1/2" OF SCALE INSIDE TBG AND FULL OF FLUID). TOO H W/ WASH PIPE. L/D CUTTER, M/U NEW CUTTER. TIH W/ WASH PIPE, DC'S AND TBG TO 8278'. R/U POWER SWIVEL. P/U 7 JNTS W/ POWER SWIVEL. CUT TBG @8463", L/D 3 JNTS, R/D POWER SWIVEL. TOO H WITH TBG TO WASH PIPE. L/D 5 JNTS OF 3 1/2" TBG WITH 1/2" OF SCALE INSIDE OF THEM. TOO H W/ WASH PIPE, L/D CUTTER. M/U NEW CUTTER, TIH W/ WASH PIPE, DC'S AND TBG TO 1300'. SDFN.

**2/3/2026** - CK PRESSURES. SITP- 0 PSI. SICP- 0 PSI. SIBHP 0 PSI. SIIP. 0 PSI. NO BLOW DOWN. TIH W/ TBG TO 8443'. R/U POWER SWIVEL. P/U TBG AND CUT 3 1/2" TBG @8643'. L/D 3 JNTS. R/D POWER SWIVEL. TOO H W/ TBG AND DC'S TO WASH PIPE. RECOVERED 6 JNTS OF 3 1/2" TBG. TOO H W/ WASH PIPE AND CHANGE OUT CUTTER. TIH W/ WASH PIPE, DC'S AND TBG TO 4700'. SDFN.

**2/4/2026** - CK PRESSURES. SITP- 0 PSI. SICP- 0 PSI. SIBHP 0 PSI. SIIP. 0 PSI. NO BLOW DOWN. TIH W/ TBG TO 8632'. R/U POWER SWIVEL, TOP OFF CASING W/ 40 BBLS OF 10#

**MIDDLE MESA 1 SWD****30.045.27004****REPLACE TUBING**

BRINE. P/U TBG AND TAGGED FILL @ 8835', CUT 3 1/2" TBG @8827'(PACKER AT 8852'). STARTED TO POOH AND STARTED TO PULL 10K OVER S.W. WORK TBG, PUMP 25 BBLs OF 10# BRINE DOWN TBG AND FREED UP. L/D 2 JNTS. R/D POWER SWIVEL. TOO H W/ TBG AND DC'S TO WASH PIPE. RECOVERED 6 JNTS OF 3 1/2" TBG W/ 1" OF SCALE INSIDE OF TBG. L/D 5 JNTS OF WASH PIPE AND CUTTER. M/U 6 1/4" SHOE, 1 JNT OF WASH PIPE, JARS, 6 DC'S. TIH W/ TBG TO 5520'. SDFN.

**2/5/2026** - CK PRESSURES. SITP- 0 PSI. SICP- 0 PSI. SIBHP 0 PSI. SIIP. 0 PSI. NO BLOW DOWN. TIH W/ TBG TO 8826'. R/U POWER SWIVEL, P/U 1 JNT AND TAG @8835'. ATTEMPT TO EST CIRC W/ 10# BRINE, UNSUCCESSFUL. EST CIRC W/ 150 BBLs OF FW. CLEAN OUT SCALE FROM 8835' TO 8853', MILL ON PACKER FOR 6.5 HRS FROM 8853' TO 8855'. POOH TO 8794'. PUMP 10 BBLs OF 10# BRINE DOWN TBG AND CASING. SDFN.

**2/6/2026** - CK PRESSURES. SITP- 0 PSI. SICP- 0 PSI. SIBHP 0 PSI. SIIP. 0 PSI. NO BLOW DOWN. P/U 2 JNTS TO 8857', EST CIRC W/ 3 BBLs OF FW, FINISH MILLING OUT PACKER IN 1.25 HRS, PUSH PACKER TO 8983'. L/D 1 JNT. R/D POWER SWIVEL. TOO H W/ TBG TO 3100', CASING PRESSURE 540 PSI. PUMP 360 BBL OF 10# BRINE. TOO H W/ TBG AND DC'S, L/D WASH PIPE AND SHOE (RECOVERED SEAL ASSEMBLY AND PACKER IN SHOE, SCALE AROUND SEAL ASSEMBLY). SISW. DEBRIEF CREW. SDFW

**2/9/2026** - CK PRESSURES. SITP- 0 PSI. SICP- 0 PSI. SIBHP 0 PSI. SIIP. 0 PSI. NO BLOW DOWN. M/U 6 1/4" BIT AND STRING MILL, TIH W/ DC'S AND TBG TO 8811'. P/U TBG AND TAG AT 9084'. R/U POWER SWIVEL. EST CIRC W/ 60 BBLs OF FW. MILL OUT SCALE FROM 9084'-9092' AND 9222'-9330'. HARD FILL OR POSSIBLE TOF @9376', LIGHT SCALE IN RETURNS, NO PROGRESS AFTER 30 MIN. L/D 1 JNT. HANG POWER SWIVEL IN DERRICK. L/D 14 JNTS TO 8950'. R/U JACAM AND PUMP 660 GAL OF NANO-PY20 AND 1320 GAL OF NANO-H. DISPLACE W/ 68 BBLs OF 10# BRINE. R/D JACAM. R/D POWER SWIVEL AND HOSES. L/D TBG TO 1500'. SISW. DEBRIEF CREW. SDFN

**2/10/2026** - CK PRESSURES. SITP- 0 PSI. SICP- 0 PSI. SIBHP 0 PSI. SIIP. 0 PSI. NO BLOW DOWN. FINISH L/D TBG, DC'S, STRING MILL AND BIT. N/D WASHINGTON HEAD, ANNULAR AND 7" SPOOL. R/U WIRELINE AND P/U 7" LUBRICATOR. RIH W/ 7" OPTIMA PACKER. FLUID LEVEL @ 780' WHILE RIH. SET PACKER @8845'(CASING COLLAR @8836'). POOH W/ SETTING TOOL. LOAD CSG W/ 30 BBLs AND TEST PACKER TO 600 PSI, GOOD TEST. R/D WL. N/D BOP. CHANGED OUT 7 OF 8 LOCK DOWN PINS ON TBG HEAD, HARD TIME REMOVING ALL PINS, WILL NEED TO CHANGE OUT 1 MORE LOCK DOWN PIN. N/U BOP. SISW. DEBRIEF CREW. SDFN

**2/11/2026** - CK PRESSURES. SITP- 0 PSI. SICP- 0 PSI. SIBHP 0 PSI. SIIP. 0 PSI. NO BLOW DOWN. SPOT IN PIPE RACKS AND UNLOAD 4 1/2" TBG. R/U CASING CREW. M/U ANCHOR

**MIDDLE MESA 1 SWD**

**30.045.27004**

**REPLACE TUBING**

LATCH, TALLY AND P/U TBG(DRIFTING) EOT @3940'. R/D CASING CREW. TIE BCK RIG TO SINGLE LINE. SDFN.

**2/12/2026** -CK PRESSURES. SITP- 0 PSI. SICP- 0 PSI. SIBHP 0 PSI. SIIP. 0 PSI. NO BLOW DOWN. R/U CASING CREW. P/U TBG (STARTED TO HAVE ISSUES DRIFTING TBG @4100' W/ 3.4" DRIFT SWITCHED OVER TO 3.06" DRIFT). LATCH ONTO PACKER @8845', RELEASE OFF OF PACKER. L/D 2 JNTS, P/U PUPS AND 1 JNT. M/U TBG HANGER. R/D CASING CREW. ROLL HOLE W/ PACKER FLUID. LAND TBG W/ 25K COMPRESSION. R/D RIG FLOOR, N/D BOP. N/U TREE. PRESSURE TEST VOID. GOOD TEST. PRESSURE TEST CASING TO 600 PSI, GOOD TEST. PRESSURE TEST TBG TO 1600 PSI, GOOD TEST. SDFN.

**2/13/2026** - CK PRESSURES. SITP- 0 PSI. SICP- 0 PSI. SIBHP 0 PSI. SIIP. 0 PSI. NO BLOW DOWN. R/U WELLCHECK, PRESSURE TEST TBG TO 1650 PSI, GOOD TEST. **PERFORM WITNESSED MIT AND BH TEST. PASSED BY ROOSTER FOSTER, SEE ATTACHED MIT CHART AND BH TEST.** R/U SLICKLINE. RIH W/ 2.25 SPEAR AND 2.75" BROACH, APPLY 700 PSI TO LUBRICATOR, KNOCK OUT DUAL DISC @8865' AND RIH TO 8920'. WORK THROUGH SEVERAL TIMES. POOH W/ SLICKLINE. SITP 280 PSI. R/D SLICKLINE. R/D RIG.

HILCORP  
30-045-27004  
05-25 T-32N R-7W



FEBRUARY 13, 2026  
CHART NO. MC MP-1000-1HR

WELCHECK OF  
METER  
FARMINGTON



*Bojy*

CHART PUT ON M TAKEN OFF M

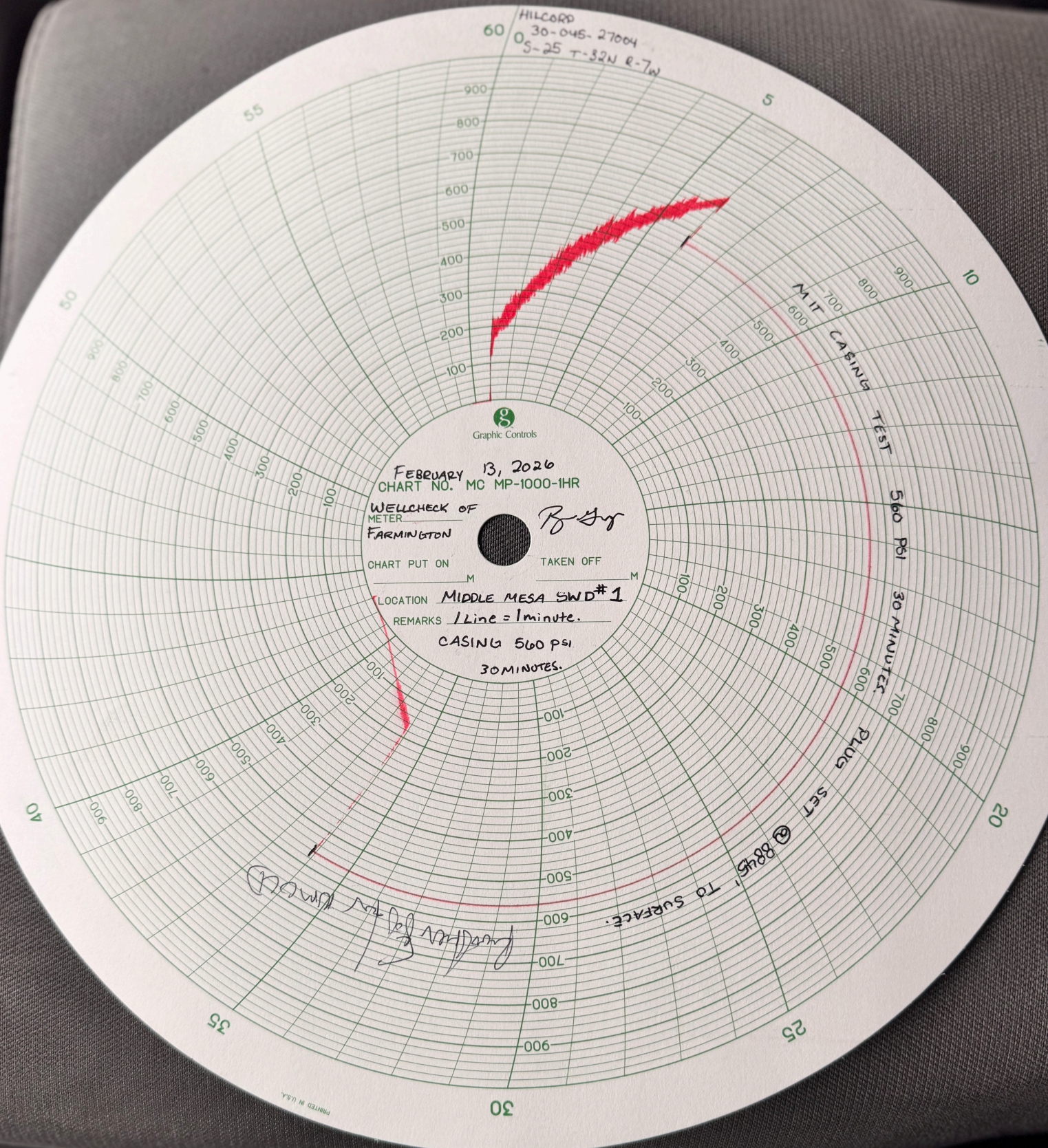
LOCATION MIDDLE MESA SWD#1

REMARKS 1 Line = 1 minute.

CASING 560 PSI  
30 MINUTES.

*Pressure set for 560 PSI*

MIT CASING TEST  
560 PSI  
30 MINUTES  
PLUG SET  
8845' TO SURFACE.



PRINTED IN U.S.A.



# NEW MEXICO ENERGY, MINERALS and NATURAL RESOURCES DEPARTMENT

## MECHANICAL INTEGRITY TEST REPORT (TA OR UIC)

Date of Test 2/13/26 Operator H. Corp Energy Company API # 30-045-27004  
Property Name Middlemesa SWD Well # 1 Location: Unit L Sec 26 Twn 32 Rge 7

Land Type:

State \_\_\_\_\_  
Federal   
Private \_\_\_\_\_  
Indian \_\_\_\_\_

Well Type:

Water Injection \_\_\_\_\_  
Salt Water Disposal   
Gas Injection \_\_\_\_\_  
Producing Oil/Gas \_\_\_\_\_  
Pressure observation \_\_\_\_\_

Temporarily Abandoned Well (Y/N) (N) TA Expires: \_\_\_\_\_

Casing Pres. 0  
Bradenhead Pres. 0  
Tubing Pres. 0  
Int. Casing Pres. N/A

Tbg. SI Pres. 0  
Tbg. Inj. Pres. 0

Max. Inj. Pres. 1683 PSI

Pressured annulus up to 560 psi. for 30 mins. Test passed/failed

REMARKS: Held 560 for entire test LT BP set @ 8845'  
Injection kill functions at 1500 psi  
the chart 1000 psi spring

By [Signature]  
(Operator Representative)

Witness [Signature]  
(NMOCD)

(Position)

Revised 02-11-02



NEW MEXICO ENERGY, MINERALS & NATURAL RESOURCES DEPARTMENT

OIL CONSERVATION DIVISION
AZTEC DISTRICT OFFICE
1000 RIO BRAZOS ROAD
AZTEC NM 87410
(505) 320-0243
File Via OCD Permitting

BRADENHEAD TEST REPORT
(submit 1 copy to above address)

Date of Test 2/13/26 Operator Hilcorp Energy CO API #30-045-27004

Property Name Middle mesa SW Well No. 1 Location: Unit L Section 25 Township 32N Range 7N

Well Status(Shut-In or Producing) Initial PSI: Tubing 0 Intermediate N/A Casing 0 Bradenhead 0

OPEN BRADENHEAD AND INTERMEDIATE TO ATMOSPHERE INDIVIDUALLY FOR 15 MINUTES EACH

Table with columns: Testing TIME, PRESSURE (Bradenhead Int, Csg, INTERM Int, Csg). Rows for 5, 10, 15, 20, 25, 30 min. Contains handwritten entries like '0', 'N/A', and a diagonal line.

Table with columns: FLOW CHARACTERISTICS (BRADENHEAD, INTERMEDIATE). Rows for Steady Flow, Surges, Down to Nothing, Nothing, Gas, Gas & Water, Water. Contains handwritten 'N/A' and checkmarks.

If bradenhead flowed water, check all of the descriptions that apply below:

CLEAR FRESH SALTY SULFUR BLACK

5 MINUTE SHUT-IN PRESSURE BRADENHEAD INTERMEDIATE

REMARKS: Small puff of gas blow n down to nothing in three seconds

By SA

Witness NM OCD

(Position)

E-mail address



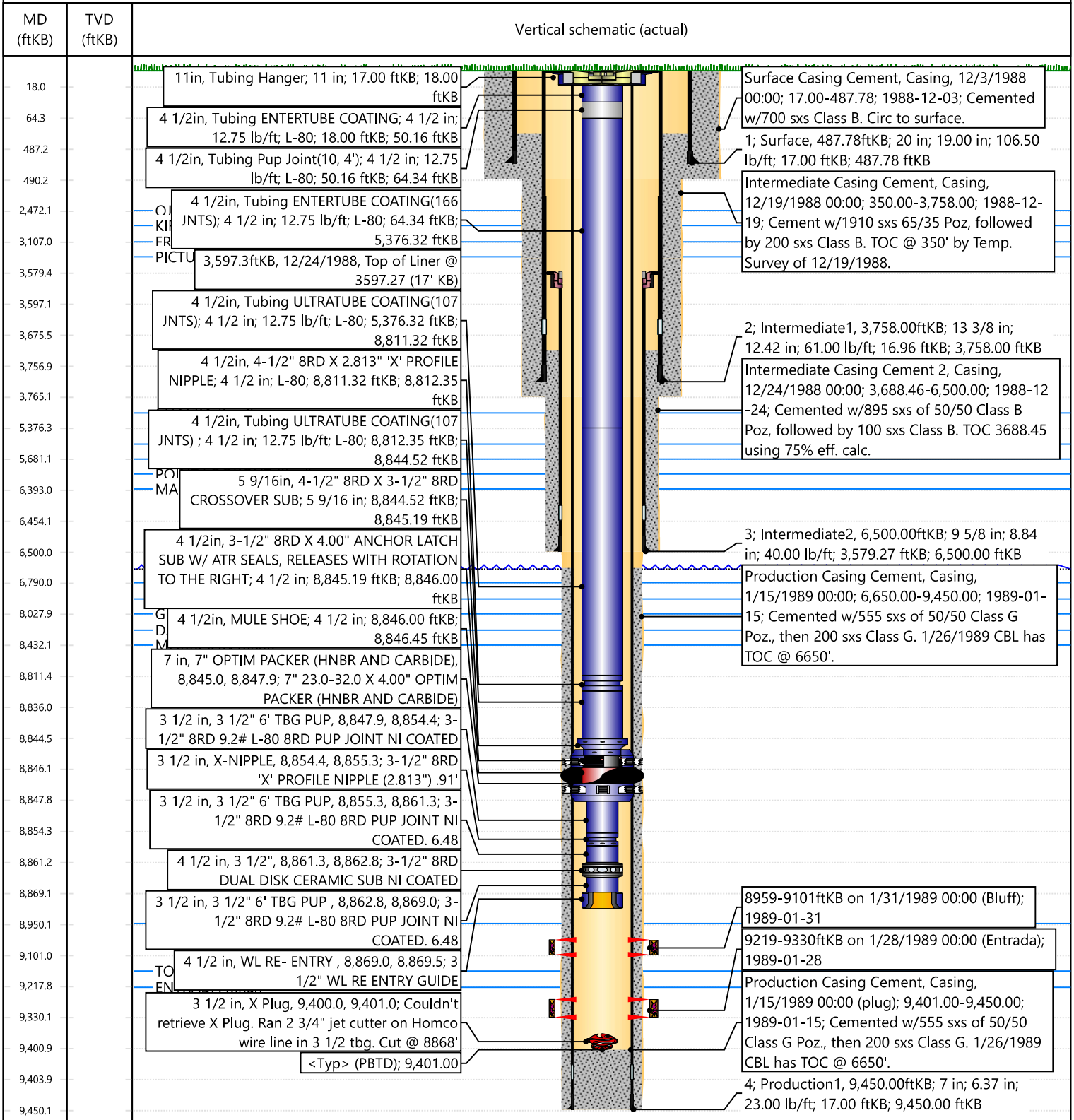
### Current Schematic - Version 3

Well Name: MIDDLE MESA #1 SWD

API / UWI 3004527004	Surface Legal Location 025-032N-007W-L	Field Name MORRISON BLUFF ENTRADA	Route 0507	State/Province NEW MEXICO	Well Configuration Type
Ground Elevation (ft) 6,642.00	Original KB/RT Elevation (ft) 6,659.00	Tubing Hanger Elevation (ft)	RKB to GL (ft) 17.00	KB-Casing Flange Distance (ft)	KB-Tubing Hanger Distance (ft)

Tubing Strings					
Run Date 2/12/2026 18:00	Set Depth (ftKB) 8,846.45	String Max Nominal OD (in) 4 1/2	String Min Nominal ID (in) 3.40	Weight/Length (lb/ft) 12.75	Original Spud Date 11/30/1988 00:00

### Original Hole, MIDDLE MESA SWD 1



Sante Fe Main Office  
Phone: (505) 476-3441

General Information  
Phone: (505) 629-6116

Online Phone Directory  
<https://www.emnrd.nm.gov/ocd/contact-us>

**State of New Mexico**  
**Energy, Minerals and Natural Resources**  
**Oil Conservation Division**  
**1220 S. St Francis Dr.**  
**Santa Fe, NM 87505**

CONDITIONS

Action 558080

**CONDITIONS**

Operator: HILCORP ENERGY COMPANY 1111 Travis Street Houston, TX 77002	OGRID: 372171
	Action Number: 558080
	Action Type: [C-103] Sub. Workover (C-103R)

**CONDITIONS**

Created By	Condition	Condition Date
andrew.fordyce	None	2/27/2026