

District I
1625 N. French Dr., Hobbs, NM 88240
District II
811 S. First St., Artesia, NM 88210
District III
1000 Rio Brazos Road, Aztec, NM 87410
District IV
1220 S. St. Francis Dr., Santa Fe, NM 87505

State of New Mexico
Energy Minerals and Natural Resources
Department
Oil Conservation Division
1220 South St. Francis Dr.
Santa Fe, NM 87505

Form C-144
Revised April 3, 2017

For temporary pits, below-grade tanks, and multi-well fluid management pits, submit to the appropriate NMOCD District Office.
For permanent pits submit to the Santa Fe Environmental Bureau office and provide a copy to the appropriate NMOCD District Office.

Pit, Below-Grade Tank, or
Proposed Alternative Method Permit or Closure Plan Application

- Type of action: [X] Below grade tank registration
[ ] Permit of a pit or proposed alternative method
[ ] Closure of a pit, below-grade tank, or proposed alternative method
[ ] Modification to an existing permit/or registration
[ ] Closure plan only submitted for an existing permitted or non-permitted pit, below-grade tank, or proposed alternative method

Instructions: Please submit one application (Form C-144) per individual pit, below-grade tank or alternative request

Please be advised that approval of this request does not relieve the operator of liability should operations result in pollution of surface water, ground water or the environment. Nor does approval relieve the operator of its responsibility to comply with any other applicable governmental authority's rules, regulations or ordinances.

1. Operator: Hilcorp Energy Company OGRID #: 372171
Address: 382 Road 3100 Aztec NM 87410
Facility or well name: YAGER COM 1M
API Number: 3004538471 OCD Permit Number
U/L or Qtr/Qtr E Section 6 Township 30N Range 11W County: San Juan
Center of Proposed Design: Latitude 36.842429 °N Longitude -108.039471 °W NAD83
Surface Owner: [ ] Federal [ ] State [X] Private [ ] Tribal Trust or Indian Allotment

2. [ ] Pit: Subsection F, G or J of 19.15.17.11 NMAC
Temporary: [ ] Drilling [ ] Workover
[ ] Permanent [ ] Emergency [ ] Cavitation [ ] P&A [ ] Multi-Well Fluid Management Low Chloride Drilling Fluid [ ] yes [ ] no
[ ] Lined [ ] Unlined Liner type: Thickness mil [ ] LLDPE [ ] HDPE [ ] PVC [ ] Other
[ ] String-Reinforced
Liner Seams: [ ] Welded [ ] Factory [ ] Other Volume: bbl Dimensions: L x W x D

3. [X] Below-grade tank: Subsection I of 19.15.17.11 NMAC
Volume: Max 120 bbl Type of fluid: Produced Water
Tank Construction material: Metal
[ ] Secondary containment with leak detection [X] Visible sidewalls, liner, 6-inch lift and automatic overflow shut-off
[ ] Visible sidewalls and liner [ ] Visible sidewalls only [ ] Other
Liner type: Thickness 45 mil [ ] HDPE [ ] PVC [X] Other LLDPE

4. [ ] Alternative Method:
Submittal of an exception request is required. Exceptions must be submitted to the Santa Fe Environmental Bureau office for consideration of approval.

5. [ ] Fencing: Subsection D of 19.15.17.11 NMAC (Applies to permanent pits, temporary pits, and below-grade tanks)
[ ] Chain link, six feet in height, two strands of barbed wire at top (Required if located within 1000 feet of a permanent residence, school, hospital, institution or church)
[ ] Four foot height, four strands of barbed wire evenly spaced between one and four feet
[X] Alternate. Please specify 4' hog wire fence with a single strand of barbed wire or a welded railing on top

6.  
**Netting:** Subsection E of 19.15.17.11 NMAC (*Applies to permanent pits and permanent open top tanks*)  
 Screen  Netting  Other \_\_\_\_\_  
 Monthly inspections (If netting or screening is not physically feasible)

7.  
**Signs:** Subsection C of 19.15.17.11 NMAC  
 12"x 24", 2" lettering, providing Operator's name, site location, and emergency telephone numbers  
 Signed in compliance with 19.15.16.8 NMAC

8.  
**Variations and Exceptions:**  
 Justifications and/or demonstrations of equivalency are required. Please refer to 19.15.17 NMAC for guidance.  
**Please check a box if one or more of the following is requested, if not leave blank:**  
 Variance(s): Requests must be submitted to the appropriate division district for consideration of approval.  
 Exception(s): Requests must be submitted to the Santa Fe Environmental Bureau office for consideration of approval.

9.  
**Siting Criteria (regarding permitting):** 19.15.17.10 NMAC  
*Instructions: The applicant must demonstrate compliance for each siting criteria below in the application. Recommendations of acceptable source material are provided below. Siting criteria does not apply to drying pads or above-grade tanks.*

<u>General siting</u>	
<b><u>Ground water is less than 25 feet below the bottom of a low chloride temporary pit or below-grade tank.</u></b> - <input type="checkbox"/> NM Office of the State Engineer - iWATERS database search; <input type="checkbox"/> USGS; <input type="checkbox"/> Data obtained from nearby wells	<input type="checkbox"/> Yes <input checked="" type="checkbox"/> No <input type="checkbox"/> NA
<b><u>Ground water is less than 50 feet below the bottom of a Temporary pit, permanent pit, or Multi-Well Fluid Management pit .</u></b> NM Office of the State Engineer - iWATERS database search; USGS; Data obtained from nearby wells	<input type="checkbox"/> Yes <input type="checkbox"/> No <input type="checkbox"/> NA
Within incorporated municipal boundaries or within a defined municipal fresh water well field covered under a municipal ordinance adopted pursuant to NMSA 1978, Section 3-27-3, as amended. <b>(Does not apply to below grade tanks)</b> - Written confirmation or verification from the municipality; Written approval obtained from the municipality	<input type="checkbox"/> Yes <input type="checkbox"/> No
Within the area overlying a subsurface mine. <b>(Does not apply to below grade tanks)</b> - Written confirmation or verification or map from the NM EMNRD-Mining and Mineral Division	<input type="checkbox"/> Yes <input type="checkbox"/> No
Within an unstable area. <b>(Does not apply to below grade tanks)</b> - Engineering measures incorporated into the design; NM Bureau of Geology & Mineral Resources; USGS; NM Geological Society; Topographic map	<input type="checkbox"/> Yes <input type="checkbox"/> No
Within a 100-year floodplain. <b>(Does not apply to below grade tanks)</b> - FEMA map	<input type="checkbox"/> Yes <input type="checkbox"/> No
<b><u>Below Grade Tanks</u></b>	
Within 100 feet of a continuously flowing watercourse, significant watercourse, lake bed, sinkhole, wetland or playa lake (measured from the ordinary high-water mark). - Topographic map; Visual inspection (certification) of the proposed site	<input type="checkbox"/> Yes <input checked="" type="checkbox"/> No
Within 200 horizontal feet of a spring or a fresh water well used for public or livestock consumption;. - NM Office of the State Engineer - iWATERS database search; Visual inspection (certification) of the proposed site	<input type="checkbox"/> Yes <input checked="" type="checkbox"/> No
<b><u>Temporary Pit using Low Chloride Drilling Fluid</u></b> (maximum chloride content 15,000 mg/liter)	
Within 100 feet of a continuously flowing watercourse, or any other significant watercourse or within 200 feet of any lakebed, sinkhole, or playa lake (measured from the ordinary high-water mark). (Applies to low chloride temporary pits.) - Topographic map; Visual inspection (certification) of the proposed site	<input type="checkbox"/> Yes <input type="checkbox"/> No
Within 300 feet from a occupied permanent residence, school, hospital, institution, or church in existence at the time of initial application. - Visual inspection (certification) of the proposed site; Aerial photo; Satellite image	<input type="checkbox"/> Yes <input type="checkbox"/> No
Within 200 horizontal feet of a spring or a private, domestic fresh water well used by less than five households for domestic or stock watering purposes, or 300feet of any other fresh water well or spring, in existence at the time of the initial application. NM Office of the State Engineer - iWATERS database search; Visual inspection (certification) of the proposed site	<input type="checkbox"/> Yes <input type="checkbox"/> No

Within 100 feet of a wetland.  
 - US Fish and Wildlife Wetland Identification map; Topographic map; Visual inspection (certification) of the proposed site  Yes  No

**Temporary Pit Non-low chloride drilling fluid**

Within 300 feet of a continuously flowing watercourse, or any other significant watercourse, or within 200 feet of any lakebed, sinkhole, or playa lake (measured from the ordinary high-water mark).  
 - Topographic map; Visual inspection (certification) of the proposed site  Yes  No

Within 300 feet from a permanent residence, school, hospital, institution, or church in existence at the time of initial application.  
 - Visual inspection (certification) of the proposed site; Aerial photo; Satellite image  Yes  No

Within 500 horizontal feet of a spring or a private, domestic fresh water well used by less than five households for domestic or stock watering purposes, or 1000 feet of any other fresh water well or spring, in the existence at the time of the initial application;  
 - NM Office of the State Engineer - iWATERS database search; Visual inspection (certification) of the proposed site  Yes  No

Within 300 feet of a wetland.  
 - US Fish and Wildlife Wetland Identification map; Topographic map; Visual inspection (certification) of the proposed site  Yes  No

**Permanent Pit or Multi-Well Fluid Management Pit**

Within 300 feet of a continuously flowing watercourse, or 200 feet of any other significant watercourse, or lakebed, sinkhole, or playa lake (measured from the ordinary high-water mark).  
 - Topographic map; Visual inspection (certification) of the proposed site  Yes  No

Within 1000 feet from a permanent residence, school, hospital, institution, or church in existence at the time of initial application.  
 - Visual inspection (certification) of the proposed site; Aerial photo; Satellite image  Yes  No

Within 500 horizontal feet of a spring or a fresh water well used for domestic or stock watering purposes, in existence at the time of initial application.  
 - NM Office of the State Engineer - iWATERS database search; Visual inspection (certification) of the proposed site  Yes  No

Within 500 feet of a wetland.  
 - US Fish and Wildlife Wetland Identification map; Topographic map; Visual inspection (certification) of the proposed site  Yes  No

**10. Temporary Pits, Emergency Pits, and Below-grade Tanks Permit Application Attachment Checklist:** Subsection B of 19.15.17.9 NMAC  
*Instructions: Each of the following items must be attached to the application. Please indicate, by a check mark in the box, that the documents are attached.*

- Hydrogeologic Report (Below-grade Tanks) - based upon the requirements of Paragraph (4) of Subsection B of 19.15.17.9 NMAC
- Hydrogeologic Data (Temporary and Emergency Pits) - based upon the requirements of Paragraph (2) of Subsection B of 19.15.17.9 NMAC
- Siting Criteria Compliance Demonstrations - based upon the appropriate requirements of 19.15.17.10 NMAC
- Design Plan - based upon the appropriate requirements of 19.15.17.11 NMAC
- Operating and Maintenance Plan - based upon the appropriate requirements of 19.15.17.12 NMAC
- Closure Plan (Please complete Boxes 14 through 18, if applicable) - based upon the appropriate requirements of Subsection C of 19.15.17.9 NMAC and 19.15.17.13 NMAC

Previously Approved Design (attach copy of design) API Number: \_\_\_\_\_ or Permit Number: \_\_\_\_\_

**11. Multi-Well Fluid Management Pit Checklist:** Subsection B of 19.15.17.9 NMAC  
*Instructions: Each of the following items must be attached to the application. Please indicate, by a check mark in the box, that the documents are attached.*

- Design Plan - based upon the appropriate requirements of 19.15.17.11 NMAC
- Operating and Maintenance Plan - based upon the appropriate requirements of 19.15.17.12 NMAC
- A List of wells with approved application for permit to drill associated with the pit.
- Closure Plan (Please complete Boxes 14 through 18, if applicable) - based upon the appropriate requirements of Subsection C of 19.15.17.9 NMAC and 19.15.17.13 NMAC
- Hydrogeologic Data - based upon the requirements of Paragraph (4) of Subsection B of 19.15.17.9 NMAC
- Siting Criteria Compliance Demonstrations - based upon the appropriate requirements of 19.15.17.10 NMAC

Previously Approved Design (attach copy of design) API Number: \_\_\_\_\_ or Permit Number: \_\_\_\_\_

12.

**Permanent Pits Permit Application Checklist:** Subsection B of 19.15.17.9 NMAC

*Instructions: Each of the following items must be attached to the application. Please indicate, by a check mark in the box, that the documents are attached.*

- Hydrogeologic Report - based upon the requirements of Paragraph (1) of Subsection B of 19.15.17.9 NMAC
- Siting Criteria Compliance Demonstrations - based upon the appropriate requirements of 19.15.17.10 NMAC
- Climatological Factors Assessment
- Certified Engineering Design Plans - based upon the appropriate requirements of 19.15.17.11 NMAC
- Dike Protection and Structural Integrity Design - based upon the appropriate requirements of 19.15.17.11 NMAC
- Leak Detection Design - based upon the appropriate requirements of 19.15.17.11 NMAC
- Liner Specifications and Compatibility Assessment - based upon the appropriate requirements of 19.15.17.11 NMAC
- Quality Control/Quality Assurance Construction and Installation Plan
- Operating and Maintenance Plan - based upon the appropriate requirements of 19.15.17.12 NMAC
- Freeboard and Overtopping Prevention Plan - based upon the appropriate requirements of 19.15.17.11 NMAC
- Nuisance or Hazardous Odors, including H<sub>2</sub>S, Prevention Plan
- Emergency Response Plan
- Oil Field Waste Stream Characterization
- Monitoring and Inspection Plan
- Erosion Control Plan
- Closure Plan - based upon the appropriate requirements of Subsection C of 19.15.17.9 NMAC and 19.15.17.13 NMAC

13.

**Proposed Closure:** 19.15.17.13 NMAC

*Instructions: Please complete the applicable boxes, Boxes 14 through 18, in regards to the proposed closure plan.*

- Type:  Drilling  Workover  Emergency  Cavitation  P&A  Permanent Pit  Below-grade Tank  Multi-well Fluid Management Pit  
 Alternative
- Proposed Closure Method:  Waste Excavation and Removal  
 Waste Removal (Closed-loop systems only)  
 On-site Closure Method (Only for temporary pits and closed-loop systems)  
 In-place Burial  On-site Trench Burial  
 Alternative Closure Method

14.

**Waste Excavation and Removal Closure Plan Checklist:** (19.15.17.13 NMAC) *Instructions: Each of the following items must be attached to the closure plan. Please indicate, by a check mark in the box, that the documents are attached.*

- Protocols and Procedures - based upon the appropriate requirements of 19.15.17.13 NMAC
- Confirmation Sampling Plan (if applicable) - based upon the appropriate requirements of Subsection C of 19.15.17.13 NMAC
- Disposal Facility Name and Permit Number (for liquids, drilling fluids and drill cuttings)
- Soil Backfill and Cover Design Specifications - based upon the appropriate requirements of Subsection H of 19.15.17.13 NMAC
- Re-vegetation Plan - based upon the appropriate requirements of Subsection H of 19.15.17.13 NMAC
- Site Reclamation Plan - based upon the appropriate requirements of Subsection H of 19.15.17.13 NMAC

15.

**Siting Criteria (regarding on-site closure methods only):** 19.15.17.10 NMAC

*Instructions: Each siting criteria requires a demonstration of compliance in the closure plan. Recommendations of acceptable source material are provided below. Requests regarding changes to certain siting criteria require justifications and/or demonstrations of equivalency. Please refer to 19.15.17.10 NMAC for guidance.*

Ground water is less than 25 feet below the bottom of the buried waste. - NM Office of the State Engineer - iWATERS database search; USGS; Data obtained from nearby wells	<input type="checkbox"/> Yes <input type="checkbox"/> No <input type="checkbox"/> NA
Ground water is between 25-50 feet below the bottom of the buried waste - NM Office of the State Engineer - iWATERS database search; USGS; Data obtained from nearby wells	<input type="checkbox"/> Yes <input type="checkbox"/> No <input type="checkbox"/> NA
Ground water is more than 100 feet below the bottom of the buried waste. - NM Office of the State Engineer - iWATERS database search; USGS; Data obtained from nearby wells	<input type="checkbox"/> Yes <input type="checkbox"/> No <input type="checkbox"/> NA
Within 100 feet of a continuously flowing watercourse, or 200 feet of any other significant watercourse, lakebed, sinkhole, or playa lake (measured from the ordinary high-water mark). - Topographic map; Visual inspection (certification) of the proposed site	<input type="checkbox"/> Yes <input type="checkbox"/> No
Within 300 feet from a permanent residence, school, hospital, institution, or church in existence at the time of initial application. - Visual inspection (certification) of the proposed site; Aerial photo; Satellite image	<input type="checkbox"/> Yes <input type="checkbox"/> No
Within 300 horizontal feet of a private, domestic fresh water well or spring used for domestic or stock watering purposes, in existence at the time of initial application. - NM Office of the State Engineer - iWATERS database; Visual inspection (certification) of the proposed site	<input type="checkbox"/> Yes <input type="checkbox"/> No
Written confirmation or verification from the municipality; Written approval obtained from the municipality	<input type="checkbox"/> Yes <input type="checkbox"/> No
Within 300 feet of a wetland. US Fish and Wildlife Wetland Identification map; Topographic map; Visual inspection (certification) of the proposed site	<input type="checkbox"/> Yes <input type="checkbox"/> No
Within incorporated municipal boundaries or within a defined municipal fresh water well field covered under a municipal ordinance	<input type="checkbox"/> Yes <input type="checkbox"/> No

adopted pursuant to NMSA 1978, Section 3-27-3, as amended. - Written confirmation or verification from the municipality; Written approval obtained from the municipality	<input type="checkbox"/> Yes <input type="checkbox"/> No
Within the area overlying a subsurface mine. - Written confirmation or verification or map from the NM EMNRD-Mining and Mineral Division	<input type="checkbox"/> Yes <input type="checkbox"/> No
Within an unstable area. - Engineering measures incorporated into the design; NM Bureau of Geology & Mineral Resources; USGS; NM Geological Society; Topographic map	<input type="checkbox"/> Yes <input type="checkbox"/> No
Within a 100-year floodplain. - FEMA map	<input type="checkbox"/> Yes <input type="checkbox"/> No

16.  
**On-Site Closure Plan Checklist:** (19.15.17.13 NMAC) *Instructions: Each of the following items must be attached to the closure plan. Please indicate, by a check mark in the box, that the documents are attached.*

- Siting Criteria Compliance Demonstrations - based upon the appropriate requirements of 19.15.17.10 NMAC
- Proof of Surface Owner Notice - based upon the appropriate requirements of Subsection E of 19.15.17.13 NMAC
- Construction/Design Plan of Burial Trench (if applicable) based upon the appropriate requirements of Subsection K of 19.15.17.11 NMAC
- Construction/Design Plan of Temporary Pit (for in-place burial of a drying pad) - based upon the appropriate requirements of 19.15.17.11 NMAC
- Protocols and Procedures - based upon the appropriate requirements of 19.15.17.13 NMAC
- Confirmation Sampling Plan (if applicable) - based upon the appropriate requirements of 19.15.17.13 NMAC
- Waste Material Sampling Plan - based upon the appropriate requirements of 19.15.17.13 NMAC
- Disposal Facility Name and Permit Number (for liquids, drilling fluids and drill cuttings or in case on-site closure standards cannot be achieved)
- Soil Cover Design - based upon the appropriate requirements of Subsection H of 19.15.17.13 NMAC
- Re-vegetation Plan - based upon the appropriate requirements of Subsection H of 19.15.17.13 NMAC
- Site Reclamation Plan - based upon the appropriate requirements of Subsection H of 19.15.17.13 NMAC

17.  
**Operator Application Certification:**  
 I hereby certify that the information submitted with this application is true, accurate and complete to the best of my knowledge and belief.

Name (Print): Tammy Jones Title: Operations/Regulatory Tech – Sr.

Signature: Tammy Jones Date: 02/24/2026

e-mail address tajones@hilcorp.com Telephone: (505)324-5185

18.  
**OCD Approval:**  Permit Application (including closure plan)  Closure Plan (only)  OCD Conditions (see attachment)

OCD Representative Signature: Joel Stone Approval Date: 03/06/2026

Title: Senior Environmental Scientist OCD Permit Number: yJZS2606550443

19.  
**Closure Report (required within 60 days of closure completion):** 19.15.17.13 NMAC  
*Instructions: Operators are required to obtain an approved closure plan prior to implementing any closure activities and submitting the closure report. The closure report is required to be submitted to the division within 60 days of the completion of the closure activities. Please do not complete this section of the form until an approved closure plan has been obtained and the closure activities have been completed.*

Closure Completion Date: \_\_\_\_\_

20.  
**Closure Method:**  
 Waste Excavation and Removal  On-Site Closure Method  Alternative Closure Method  Waste Removal (Closed-loop systems only)  
 If different from approved plan, please explain.

21.  
**Closure Report Attachment Checklist:** *Instructions: Each of the following items must be attached to the closure report. Please indicate, by a check mark in the box, that the documents are attached.*

- Proof of Closure Notice (surface owner and division)
- Proof of Deed Notice (required for on-site closure for private land only)
- Plot Plan (for on-site closures and temporary pits)
- Confirmation Sampling Analytical Results (if applicable)
- Waste Material Sampling Analytical Results (required for on-site closure)
- Disposal Facility Name and Permit Number
- Soil Backfilling and Cover Installation
- Re-vegetation Application Rates and Seeding Technique
- Site Reclamation (Photo Documentation)

On-site Closure Location: Latitude \_\_\_\_\_ Longitude \_\_\_\_\_ NAD:  1927  1983

22.

**Operator Closure Certification:**

I hereby certify that the information and attachments submitted with this closure report is true, accurate and complete to the best of my knowledge and belief. I also certify that the closure complies with all applicable closure requirements and conditions specified in the approved closure plan.

Name (Print): \_\_\_\_\_ Title: \_\_\_\_\_ Operations/Regulatory Technician – Sr. \_\_\_\_\_

Signature: \_\_\_\_\_ Date: \_\_\_\_\_

e-mail address: \_\_\_\_\_ Telephone: \_\_\_\_\_

Yager Com 1M (BELOW GRADE TANK)

Hilcorp Energy Company requests a variance for the items listed below. The requested variance, per 19.15.17.15.A, provides equal or better protection of fresh water, public health & the environment.

1. Fencing

- Fencing as described in Section 5 under Alternate, Hilcorp will construct all new fences around the below grade tank utilizing 48" steel mesh field-fence (hog-wire) on the bottom with a single strand of barbed wire or a welded railing on top. T-posts shall be installed every 12 feet and corners shall be anchored utilizing a secondary T-post. Below grade tanks will be fenced, regardless of location.

2. Geo-membrane Liner

- The geo-membrane liner consists of a 45-mil flexible LLDPE material manufactured by Brawler Industries, LLC as SuperScrim H45. SuperScrim H45 is manufactured with LLDPE and is 45 mil inch thickness and is reinforced with polyester scrim. The geomembrane liner has a hydraulic conductivity of less than  $5 \times 10^{-14}$  cm/s and is resistant to ultraviolet light, petroleum hydrocarbons, salts and acidic and alkaline solutions. The manufacturer specific sheet is attached.

3. Hilcorp will notify Public Entity Surface Owners by email in lieu of certified mail. Private Entity Surface Owners will still be notified via certified mail.



# New Mexico Office of the State Engineer

## Water Column/Average Depth to Water

(A CLW##### in the POD suffix indicates the POD has been replaced & no longer serves a water right file.) (R=POD has been replaced, O=orphaned, C=the file is closed)

(quarters are smallest to largest)

(In feet)

POD Number	Code	Sub basin	County	Q64	Q16	Q4	Sec	Tws	Range	X	Y	Map	Well Depth	Depth Water	Water Column
<a href="#">SJ 00135</a>		SJAR	SJ		NW	SE	07	30N	11W	229764.0	4079745.0 *	●	180	23	157
<a href="#">SJ 00162</a>		SJAR	SJ	SW	NW	SE	07	30N	11W	229663.0	4079644.0 *	●	58	23	35
<a href="#">SJ 00259</a>		SJAR	SJ		SE	NE	07	30N	11W	230184.0	4080137.0 *	●	25	12	13
<a href="#">SJ 00329</a>		SJAR	SJ	SW	NW	SE	07	30N	11W	229663.0	4079644.0 *	●	63	20	43
<a href="#">SJ 00358</a>		SJAR	SJ	SW	SE	NW	07	30N	11W	229289.0	4080055.0 *	●	61	38	23
<a href="#">SJ 00387</a>		SJAR	SJ	SW	SE	NW	07	30N	11W	229289.0	4080055.0 *	●			
<a href="#">SJ 00389</a>		SJAR	SJ	SW	SE	NW	07	30N	11W	229289.0	4080055.0 *	●	53		
<a href="#">SJ 00397</a>		SJAR	SJ	SW	SE	NW	07	30N	11W	229289.0	4080055.0 *	●	56	35	21
<a href="#">SJ 00415</a>		SJAR	SJ	SW	SE	NW	07	30N	11W	229289.0	4080055.0 *	●	53	40	13
<a href="#">SJ 00601</a>		SJAR	SJ	NE	SW	SE	07	30N	11W	229844.0	4079443.0 *	●	40	22	18
<a href="#">SJ 00604</a>		SJAR	SJ	NE	SW	SE	07	30N	11W	229844.0	4079443.0 *	●	38	22	16
<a href="#">SJ 00620</a>		SJAR	SJ	SW	NW	SE	07	30N	11W	229663.0	4079644.0 *	●	52	35	17
<a href="#">SJ 00679</a>		SJAR	SJ	SW	NW	SE	07	30N	11W	229663.0	4079644.0 *	●	48	22	26
<a href="#">SJ 00688</a>		SJAR	SJ	SW	SE	NW	07	30N	11W	229289.0	4080055.0 *	●	70	58	12
<a href="#">SJ 00689</a>		SJAR	SJ	SW	SE	NW	07	30N	11W	229289.0	4080055.0 *	●	78	65	13
<a href="#">SJ 00690 POD1</a>	R	SJAR	SJ	SW	SE	NW	07	30N	11W	229289.0	4080055.0 *	●	60		
<a href="#">SJ 00690 POD2</a>		SJAR	SJ	NE	NW	SW	07	30N	11W	228911.3	4079938.0	●	100	60	40
<a href="#">SJ 00739</a>		SJAR	SJ	SW	SE	NW	07	30N	11W	229289.0	4080055.0 *	●	70	58	12
<a href="#">SJ 00748</a>		SJAR	SJ	SW	SE	NW	07	30N	11W	229289.0	4080055.0 *	●	60	41	19
<a href="#">SJ 00769</a>		SJAR	SJ		NW	SE	07	30N	11W	229764.0	4079745.0 *	●	50	14	36
<a href="#">SJ 00806</a>		SJAR	SJ	SW	SE	NW	07	30N	11W	229289.0	4080055.0 *	●	38	20	18
<a href="#">SJ 00882</a>		SJAR	SJ	SW	SE	NW	07	30N	11W	229289.0	4080055.0 *	●	60	50	10
<a href="#">SJ 00889</a>		SJAR	SJ	SW	SE	NW	07	30N	11W	229289.0	4080055.0 *	●	55		
<a href="#">SJ 00893</a>		SJAR	SJ		NE	SE	07	30N	11W	230166.0	4079735.0 *	●	80	40	40
<a href="#">SJ 00918</a>		SJAR	SJ	NE	SW	SE	07	30N	11W	229844.0	4079443.0 *	●	35	14	21
<a href="#">SJ 00919</a>		SJAR	SJ	NE	SW	SE	07	30N	11W	229844.0	4079443.0 *	●	35	12	23
<a href="#">SJ 00920</a>		SJAR	SJ	NE	SW	SE	07	30N	11W	229844.0	4079443.0 *	●	35	12	23
<a href="#">SJ 01172</a>		SJAR	SJ		NE	SW	07	30N	11W	229375.0	4079755.0 *	●	50	30	20
<a href="#">SJ 01310</a>		SJAR	SJ		SW	SW	07	30N	11W	228950.0	4079364.0 *	●	80	50	30
<a href="#">SJ 01404</a>		SJAR	SJ		SW	SE	07	30N	11W	229745.0	4079344.0 *	●	40	15	25
<a href="#">SJ 01406</a>		SJAR	SJ		NW	SE	07	30N	11W	229764.0	4079745.0 *	●	45	12	33
<a href="#">SJ 01425</a>		SJAR	SJ		SE	SW	07	30N	11W	229361.0	4079353.0 *	●	55	25	30
<a href="#">SJ 01468</a>		SJAR	SJ		SE	SW	07	30N	11W	229361.0	4079353.0 *	●	60	25	35
<a href="#">SJ 01475</a>		SJAR	SJ	SW	SW	NE	07	30N	11W	229682.0	4080046.0 *	●	49	27	22
<a href="#">SJ 01484</a>		SJAR	SJ		SW	SW	07	30N	11W	228950.0	4079364.0 *	●	61	10	51
<a href="#">SJ 01492</a>		SJAR	SJ			SW	07	30N	11W	229151.0	4079565.0 *	●	60	22	38
<a href="#">SJ 01567</a>		SJAR	SJ	NE	SE	SE	07	30N	11W	230247.0	4079431.0 *	●	35	14	21

(A CLW##### in  
the POD suffix  
indicates  
the POD has been  
replaced  
& no longer serves  
a water right file.)

(R=POD has  
been  
replaced,  
O=orphaned,  
C=the file is  
closed)

(quarters are  
smallest to  
largest)

(In feet)

POD Number	Code	Sub basin	County	Q64	Q16	Q4	Sec	Tws	Range	X	Y	Map	Well Depth	Depth Water	Water Column
<a href="#">SJ 01667</a>		SJAR	SJ		SW	SE	07	30N	11W	229745.0	4079344.0 *	●	41	21	20
<a href="#">SJ 02005</a>		SJAR	SJ	SE	SE	SW	07	30N	11W	229460.0	4079252.0 *	●	55	20	35
<a href="#">SJ 02006</a>		SJAR	SJ	NE	SE	SW	07	30N	11W	229460.0	4079452.0 *	●	50	24	26
<a href="#">SJ 02140</a>		SJAR	SJ	NW	NW	NW	07	30N	11W	228886.0	4080666.0 *	●	70	60	10
<a href="#">SJ 02194</a>		SJAR	SJ				07	30N	11W	229553.0	4079967.0 *	●	59	22	37
<a href="#">SJ 02715</a>		SJAR	SJ	SE	SE	SW	07	30N	11W	229460.0	4079252.0 *	●	68	20	48
<a href="#">SJ 02906</a>		SJAR	SJ	SE	NW	SE	07	30N	11W	229863.0	4079644.0 *	●	45	24	21
<a href="#">SJ 02936</a>		SJAR	SJ	NW	NW	SE	07	30N	11W	229663.0	4079844.0 *	●	38	30	8
<a href="#">SJ 03245</a>		SJAR	SJ	SE	SE	SE	06	30N	11W	230318.0	4080843.0 *	●	80	65	15
<a href="#">SJ 03271</a>		SJAR	SJ	NE	SW	NE	07	30N	11W	229882.0	4080246.0 *	●			
<a href="#">SJ 03465</a>		SJAR	SJ	SE	SW	NE	07	30N	11W	229882.0	4080046.0 *	●	80		
<a href="#">SJ 03484</a>		SJAR	SJ	SW	SE	SW	07	30N	11W	229260.0	4079252.0 *	●	75		
<a href="#">SJ 03630</a>		SJAR	SJ	SW	SW	SW	07	30N	11W	228849.0	4079263.0 *	●	68	24	44
<a href="#">SJ 03794 POD1</a>		SJAR	SJ	SW	NW	SW	07	30N	11W	228894.2	4079720.7	●	44	27	17
<a href="#">SJ 03914 POD1</a>		SJAR	SJ	SW	SW	NE	07	30N	11W	229772.0	4080131.9	●	140	65	75
<a href="#">SJ 04048 POD1</a>		SJAR	SJ	SW	SW	SW	07	30N	11W	228773.9	4079213.8	●	52	4	48
<a href="#">SJ 04337 POD1</a>		SJAR	SJ	NE	SE	SW	07	30N	11W	229294.8	4079512.3	●	95	65	30
<a href="#">SJ 04404 POD1</a>		SJAR	SJ		SE	SE	07	30N	11W	408628.4	4075955.8	●	61	40	21
<a href="#">SJ 04428 POD1</a>		SJAR	SJ		NE	SE	07	30N	11W	230219.2	4079700.0	●	65	45	20
<a href="#">SJ 04450 POD1</a>		SJAR	SJ	SW	SE	NW	07	30N	11W	229284.7	4080006.3	●	100	60	40
<a href="#">SJ 04615 POD1</a>		SJAR	SJ	SE	SW	SW	07	30N	11W	228992.1	4079271.0	●	84	54	30

Average Depth to Water: **32 feet**

Minimum Depth: **4 feet**

Maximum Depth: **65 feet**

**Record Count:** 58

**Basin/County Search:**

**Basin:** SJ

**County:** SJ

**PLSS Search:**

**Range:** 11W

**Township:** 30N

**Section:** 6,7

\* UTM location was derived from PLSS - see Help



# YAGER COM 1M - Aerial Map

Date: 2/24/2026  
 Scale: 1:24,000 mi  
 0.0 0.15 0.3 0.45 0.6

## Regulatory: Water

- + Cathodic 2008
- ◆ Hydrogeologic
- \* POD Waters

## Townships and Sections

- Townships
- Sections

## Roads and Highways

- US Highways

## Gates

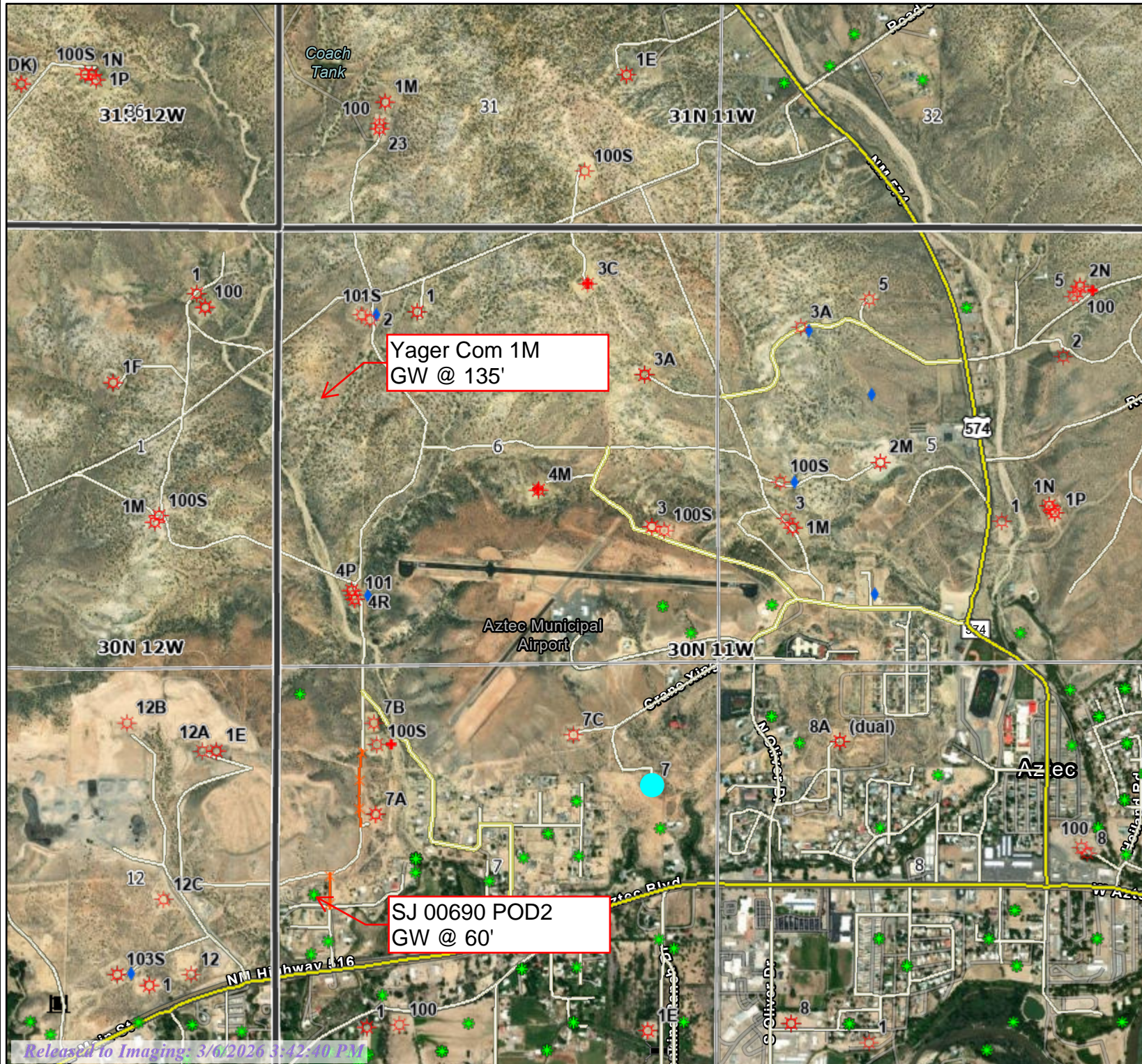
- Gate

## Cattlegaurds

- Other/Unknown

## World Imagery

- World Imagery
- Low Resolution 15m Imagery
- High Resolution 60cm Imagery
- High Resolution 30cm Imagery
- Citations
- 4.8m Resolution Metadata



## **Below Grade Tank (BGT) Siting Criteria and Compliance Demonstrations**

Well Name: Yager Com 1M

1. Depth to groundwater (should not be less than 25 feet):

The nearest recorded well with available water-depth information is the **POD2 SJ 00690** with groundwater @ 60' as indicated in the **Water Column/Average Depth to Water** attached. The subject well is 87' higher in elevation making depth to groundwater under the tank at 135'.

- 
2. Distance to watercourse (should not be within 100 feet of a continuously flowing watercourse, other significant watercourse, lakebed, sinkhole, wetland or playa lake [measured from the ordinary high-water mark]):

Aerial map attached indicates that there are **no** lakebeds, sinkholes, playa lakes, or watercourses within 100 feet of the proposed Below Grade Tank.

- 
3. Distance to springs or wells (should not be within 200 feet of a spring or a fresh water well used for public or livestock consumption):

Aerial map attached indicates that the Below Grade Tank will **not** be within 200 feet of any recorded well or spring.

## ***Hydrogeological Report for Nacimiento Formation***

### **Regional Geological context:**

The Nacimiento Formation is of Paleocene age (Baltz, 1967, p. 35). It crops out in a broad band inside the southern and western margins of the central basin and in a narrow band along the west face of the Nacimiento Uplift. The Nacimiento is a nonresistant unit and typically erodes to low, rounded hills or forms badland topography.

The Nacimiento Formation occurs in approximately only the southern two-thirds of the San Juan Basin where it conformably overlies and intertongues with the Ojo Alamo Sandstone (Fassett, 1974, p. 229). The Nacimiento Formation grades laterally into the main part of the Animas Formation (Fassett and Hinds, 1971, p. 34); thus, in this area, the two formations occupy the same stratigraphic interval.

Strata of the Nacimiento Formation were deposited in lakebeds in the central basin area with lesser deposition in stream channels (Brimhall, 1973, p. 201). In general, the Nacimiento consists of drab, interbedded black and gray shale with discontinuous, white, medium- to very coarse grained arkosic sandstone (Stone et al., 1983, p.30). Stone et al. indicated that the formation may contain more sandstone than commonly reported because some investigators assume the slope-forming strata in the unit area shales, whereas in many places the strata actually are poorly consolidated sandstones. Total thickness of the Nacimiento Formation ranges from about 500 to 1,300 feet. The unit generally thickens from the basin margins toward the basin center (Steven et al., 1974). The sandstone deposits within the Nacimiento Formation are much thinner than the total thickness of the formation because their environment of deposition was localized stream channels (Brimhall, 1973, p. 201). The thickness of the combined San Jose, Animas, and Nacimiento Formations ranges from 500 to more than 3,500 feet.

### **Hydraulic Properties:**

**Reported well yields** for 53 wells completed in either the Animas or Nacimiento Formations range from 2 to 90 gallons per minute and the median yield is 7.5 gallons per minute. The primary use of water from Nacimiento and Animas Formations is domestic and livestock supplies. There are no known aquifer tests for the Animas or Nacimiento Formations, but specific capacities reported for six wells range from 0.24 to 2.30 gallons per minute per foot of drawdown (Levings et al., 1990).

The Animas and Nacimiento Formations are in many ways hydrologically similar to the San Jose Formation because sands in both units produce approximately the same quantities of water. However, the greater percentage of fine materials in the Animas and Nacimiento Formations may restrict downward vertical leakage to the Ojo Alamo Sandstone or Kirtland Shale. The poorly cemented fine material is highly erodible, forms a badland terrain, and supports only spotty vegetation. These conditions are more conducive to runoff than retention of precipitation.

### **References:**

Baltz, E.H., 1967, Stratigraphy and regional tectonic implications of part of Upper Cretaceous rocks, east-central San Juan Basin, New Mexico: USGS Professional Paper

552, 101 p.

Brimhall, R.M., 1973, Ground-water hydrology of Tertiary rocks of the San Juan Basin, New Mexico, in Fassett, J.E., ed., Cretaceous and Tertiary rocks of the Southern Colorado Plateau: Four Corners Geological Society Memoir, p. 197-207.

Fassett, J.E., 1974, Cretaceous and Tertiary rocks of the eastern San Juan Basin, New Mexico and Colorado, in Guidebook of Ghost Ranch, central-northern New Mexico: New Mexico Geological Society, 25th Field Conference, p. 225-230.

Fassett, J.E., and Hinds, J.S., 1971, Geology and fuel resources of the Fruitland Formation and Kirtland Shale of the San Juan Basin, New Mexico and Colorado: USGS Professional Paper 676, 76 p.

Levings, G.W., Craig, S.d., Dam, W.L., Kernodle, J.M., and Thorn, C.R., 1990, Hydrogeology of the San Jose, Nacimiento, and Animas Formations in the San Juan structural basin, New Mexico, Colorado, Arizona, and Utah: USGS Hydrologic Investigations Atlas HA-720-A, 2 sheets.

Stone, W.J., Lyford, F.P., Frenzel, P.F., Mizell, N.H., and Padgett, E.T., 1983, Hydrogeology and water resources of San Juan Basin, New Mexico: New Mexico Bureau of Mines and Mineral Resources, Hydrologic Report 6.

### Below Grade Tank Design and Construction

In accordance with NMAC 19.15.17 the following information describes the design and construction of below-grade tanks on Hilcorp Energy Company, hereinafter known as HEC, locations. This is HEC's standard procedure for all below grade tanks (BGT). A separate plan will be submitted for any BGT which does not conform to this plan.

#### General Plan:

1. HEC will design and construct a properly sized and approved BGT which will contain liquids and should prevent contamination of fresh water to protect the public health and environment.
2. HEC signage will comply with 19.15.17.11.C NMAC.
3. HEC is requesting approval of an alternative fencing to be used on BGT tank locations. HEC requests to utilize 48" steel mesh field-fence (hog-wire) on the bottom with a single strand of barbed wire or a welded railing on top. T-posts shall be installed every 12 feet and corners shall be anchored utilizing a secondary T-post. BGTs will be fenced, regardless of location.
  - a. If the BGT is located within 1000' of an occupied permanent residence, school, hospital, institution or church, HEC will construct A 6' chain link fence with two strands of barbed wire or a welded railing on top. The operator shall ensure that all gates associated with the fence are closed and locked when responsible personnel are not onsite.
4. HEC will construct a screened, expanded metal covering, on the top of the BGT.
5. HEC will ensure that a BGT is constructed of materials resistant to the BGT's particular contents and resistant to damage from sunlight as shown on design drawing and specification sheet.
6. The HEC BGT system will have a properly constructed foundation consisting of a level base free of rocks, debris, sharp edges or irregularities to prevent punctures, cracks or indentations of the liner or tank bottom as shown on design drawing.
7. HEC shall operate and install the BGT to prevent the collection of surface water run-on. HEC has built in shut off devices that do not allow a BGT to overflow. HEC constructs berms and corrugated retaining walls at least 6" above ground to keep from surface water run-on entering the BGT as shown on the design plan.
8. If HEC needs to modify/retrofit the existing BGT it will meet the below specifications.
9. HEC will construct and use a BGT that does not have double walls. The BGT's side walls will be open for visual inspection for leaks, the BGT's bottom is elevated a minimum of six inches above the underlying ground surface and the BGT is underlain with a geomembrane liner to divert leaked liquid to a location that can be visually inspected.
10. HEC will equip below grade tanks with a properly functioning, automatic high-level shut off control device, as well as manual controls, to prevent overflows.
11. HEC will utilize a geomembrane liner manufactured by Brawler Industries, LLC as SuperScrim H45. SuperScrim H45 is manufactured with LLDPE and is 45 mil inch thickness and is reinforced with polyester scrim. The geomembrane liner has a hydraulic conductivity of less than  $5 \times 10^{-14}$  cm/s and is resistant to ultraviolet light, petroleum hydrocarbons, salts and acidic and alkaline solutions. The manufacturer specific sheet is attached.
12. The general specification for design and construction are attached

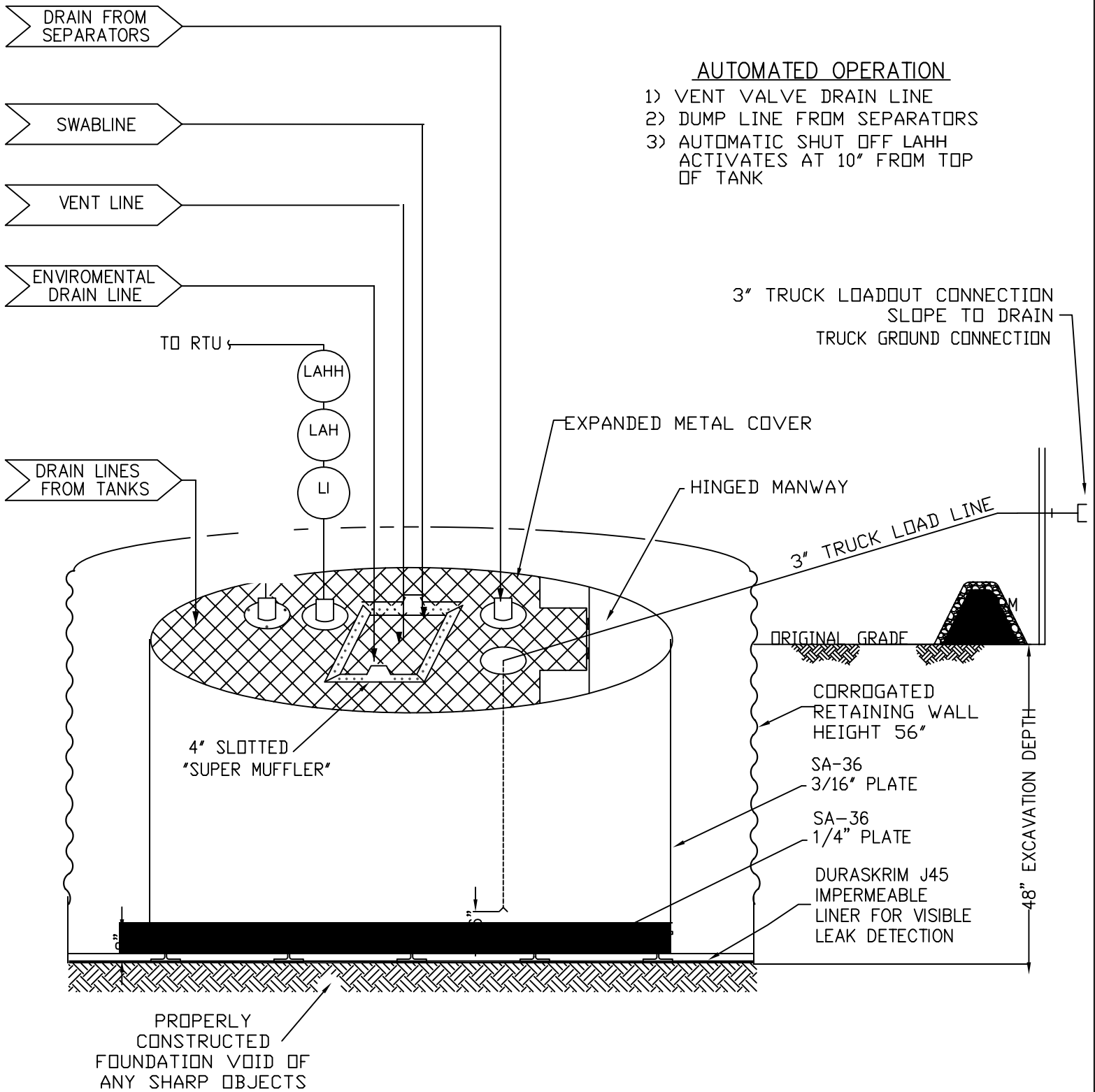
5/9/2022

### MANUAL OPERATION

- 1) PRODUCTION TANKS DRAINLINE
- 2) SWABLINE DRAIN LINE
- 3) ENVIROMENTAL DRAIN LINE FROM COMPRESSOR SKID

### AUTOMATED OPERATION

- 1) VENT VALVE DRAIN LINE
- 2) DUMP LINE FROM SEPARATORS
- 3) AUTOMATIC SHUT OFF LAHH ACTIVATES AT 10" FROM TOP OF TANK



PRODUCED WATER PIT TANK  
 OPEN TOP GRAVITY FLOW TANK  
 INTERNALLY COATED WITH  
 12-14 MILS AMERON AMERCOAT 385



## SuperScrim™ H Product Specifications

This product meets GRI GM 25 Specifications

Properties	Test Method	Frequency	Minimum Average Values		
			H30	H36	H45
Thickness, Nominal (mils) Min. Ave. (mils)	ASTM D5199	Per roll	30 27	36 32	45 40
Weight Nominal (lb/1000, ft <sup>2</sup> ) Min. Ave. (lb/1000, ft <sup>2</sup> )	ASTM D5261	Per roll	140 125	168 151	210 189
Grab Tensile Strength (lb), min. ave. Elongation (%), min. ave.	ASTM D7004 (each direction)	30,000 lb	300 25	310 25	320 25
Tongue Tear (lb), min. ave.	ASTM D5884 (each direction)	30,000 lb	130	130	130
Index Puncture (lb), min. ave.	ASTM D4833	30,000 lb	85	103	105
Ply Adhesion (lb), min. ave. <sup>(1)</sup>	ASTM D6636	30,000 lb	20	25	25
Oxidative Induction Time (OIT) <sup>(2)</sup> (a) Standard OIT Or (b) High Pressure OIT	ASTM D3895 ASTM D5885	Formulation	>100 >1000	>100 >1000	>100 >1000
Standard Roll Dimensions					
Roll Width <sup>(3)</sup> , ft			11.83	11.83	11.83
Roll Length <sup>(3)</sup> , ft			1500	1230	1000
Roll Area, ft <sup>2</sup>			17,745	14,551	11,830

<sup>(1)</sup>Alternatively, an acceptable ply adhesion is to have a film tearing bond occur within the sheet material.

<sup>(2)</sup>The Manufacturer has the option to select either one of the OIT methods listed to evaluate the antioxidant effectiveness in the geomembrane.

<sup>(3)</sup>Roll widths and lengths have a tolerance of ± 1%

\*Custom material thicknesses also available

This data is provided for informational purposes only. Brawler Industries, LLC makes no warranties as to the suitability of the fitness for a specific use or merchantability of products referred to, no guarantee of satisfactory results upon contained information or recommendations and disclaims all liability from resulting loss or damage. This information is subject to change without notice, please check with Brawler Industries, LLC for current updates.

This is a preliminary data sheet based upon laboratory testing of initial manufacturing lots and may be changed without notice as additional product testing data becomes available.



© 2015 Brawler Industries, LLC



MILES CITY, MT  
184 Hwy 59 N  
Miles City, MT . 59301  
800.488.3592  
406.234.1680

MIDLAND, TX  
11701 Co. Rd. 125 W  
Midland, TX . 79711  
800.583.6005  
432.563.4005

PLEASANTON, TX  
4300 S Hwy 281  
Pleasanton, TX . 78064  
830.569.4005

HOUSTON, TX  
8615 Golden Spike Ln  
Houston, TX . 77086  
800.364.7688  
281.272.1660

SE HABLA ESPAÑOL

www.brawler.com

## SuperScrim™ WC Product Specifications

Properties	Test Method	Minimum Average Values					
		9 mil	12 mil	16 mil	20 mil	24 mil	30 mil
Weight	D5261	5.4 oz/yd <sup>2</sup>	5.7 oz/yd <sup>2</sup>	7.2 oz/yd <sup>2</sup>	9.6 oz/yd <sup>2</sup>	11.5 oz/yd <sup>2</sup>	13.4 oz/yd <sup>2</sup>
Thickness		9 mil	12 mil	16 mil	20 mil	24 mil	30 mil
Grab Tensile (lbs.)	D751	MD 200 CD 135	MD 210 CD 176	MD 230 CD 210	MD 330 CD 286	MD 352 CD 300	MD 352 CD 300
Mullen Burst	D6241	300 psi	350 psi	400 psi	600 psi	680 psi	780 psi
Accelerated UV Weathering	D4355	>80% after 2000 hrs exposure	>90% after 2000 hrs exposure	>90% after 2000 hrs exposure	>90% after 2000 hrs exposure	>90% after 2000 hrs exposure	>90% after 2000 hrs exposure
Standard Roll Dimensions							
Roll Length <sup>(2)</sup> , Ft		3,000	3,000	4,000	3,000	2,250	2,250
Roll Width <sup>(2)</sup> , Ft		12	12	12	12	12	12
Roll Area, Ft <sup>2</sup>		36,000	36,000	48,000	36,000	27,000	27,000

<sup>(1)</sup>9 of 10 views shall be Category 1 or 2. No more than 1 view from Category 3.

<sup>(2)</sup>Roll widths and lengths have a tolerance of  $\pm 1\%$

Custom material thicknesses also available

*This data is provided for informational purposes only. Brawler Industries, LLC makes no warranties as to the suitability of the fitness for a specific use or merchantability of products referred to, no guarantee of satisfactory results upon contained information or recommendations and disclaims all liability from resulting loss or damage. This information is subject to change without notice, please check with Brawler Industries, LLC for current updates.*



MILES CITY, MT  
184 Hwy 59 N  
Miles City, MT . 59301  
800.488.3592  
406.234.1680

MIDLAND, TX  
11701 Co. Rd. 125 W  
Midland, TX . 79711  
800.583.6005  
432.563.4005

PLEASANTON, TX  
4300 S Hwy 281  
Pleasanton, TX . 78064  
830.569.4005

HOUSTON, TX  
8615 Golden Spike Ln  
Houston, TX . 77086  
800.364.7688  
281.272.1660



© 2014 Brawler Industries, LLC

SE HABLA ESPAÑOL

[www.brawler.com](http://www.brawler.com)

Hilcorp Energy Company  
San Juan Basin  
Below Grade Tank Maintenance and Operating Plan

In accordance with Rule 19.15.17 the following information describes the operation and maintenance of a below-grade tank (BGT) on a Hilcorp Energy Company (HEC) location. This is HEC's standard procedure for all BGT's. A separate plan will be submitted for any BGT which does not conform to this plan.

General Plan:

1. HEC will operator and maintain a BGT to contain liquids and solids and maintain the integrity of the liner, liner system and secondary containment system to prevent contamination of fresh water and protect public health and the environmental. HEC will perform an inspection on a monthly basis, install cathodic protection and automatic overflow shutoff devices as seen on the design plan.
2. HEC will not discharge into or store any hazardous waste in the BGT.
3. HEC shall operator and install the BGT to prevent the collection of surface water run-on. HEC has built in shut-off devices that do not all ow a BGT to overflow. HEC constructs berms and corrugated retained walls at least 6" above grade to keep surface water run-on from entering the BGT as shown on the design plan.
4. As per 19.15.17.12.D(3), HEC will inspect the BGT for leakage and damage at least monthly. The operator will document the integrity of each tank at least annually and maintain a written record for 5 years. Inspections may include 1) containment berms adequate and no oil present, 2) tanks had no visible leaks or sign of corrosion, 3) tank valves, flanges, and hatches had no visible leaks and 4) no evidence of significant spillage of produced liquids. HEC shall remove any visible or measurable layer of oil from the fluid surface of the BGT in an effort to prevent significant accumulation of oil overtime.
5. HEC shall maintain adequate freeboard to prevent overtopping of the BGT.
6. If a BGT develops a leak, then HEC shall removal all liquid above the damage or leak within 48 hours of discovery, notify the appropriate division office pursuant to 19.15.29 NMAC and repair the damage or replace BGT as applicable.
7. If HEC discovers a BGT designed in accordance with 19.15.17.11.I(5) has lost integrity the BGT will promptly be drained and removed from service and HEC will follow the approved closure plan. If HEC discovers a retrofitted BGT designed in accordance with 19.15.17.11.I(4)(a-c), does not demonstrate integrity or that the BGT develops any of the conditions identified in Paragraph (5) of Subsection A of 19.15.17.12 NMAC shall repair the damage or close the existing BGT pursuant to the closure requirements of 19.15.17.13 NMAC.
8. If HEC equips or retrofits the existing BGT to comply with Paragraphs (1) through (4) of Subsection I of 19.15.17.11 NMAC, HEC shall visually inspect the area beneath the BGT during the retrofit and document any areas that are wet, discolored or showing other evidence of a release on form C-141. HEC shall measure and report to the division the concentration of contaminants in the wet or discolored soil with respect to the standards set forth in Table I of 19.15.17.13 NMAC. If there is no wet or discolored soil or if the concentration of contaminants in the wet or discolored soil is less than the standard set forth in Table I of 19.15.17.13 NMAC, then HEC will proceed with the closure requirements of 19.15.17.13 NMAC prior to initiating the retrofit or replacement.

Hilcorp Energy Company  
San Juan Asset  
Production BGT Closure Plan

In accordance with Rule 19.15.17.13 NMAC, the following plan describes the general closure requirements of a below-grade tank (BGT) on any Hilcorp Energy Company (HEC) location in the San Juan Asset. This is HEC's standard closure procedure for all BGT's regulated under Rule 19.15.17 NMAC and operated by HEC. For those closures which do not conform to this standard closure plan, a separate BGT specific closure plan will be developed and utilized.

Closure Conditions and Timing for BGT:

- Within 60 days of cessation of operation HEC will:
  - Remove all liquids and sludge and dispose in a division approved manner.
- Within 72 hours or 1 week prior to closure HEC will:
  - Give notice to surface owners by certified mail. For public entities by email as specified on the variance page.
  - Give notice to Division District Office verbal or in writing/email.
- Within 6 months of cessation of operation HEC will:
  - Remove BGT and dispose, recycle, reuse, or reclaim in a division approved manner.
  - Remove unused onsite equipment associated with the BGT.
- Within 60 days of closure HEC will:
  - Send the Division District Office a Closure Report per 19.15.17.13.F (1).

General Plan Requirements:

1. Prior to initiating any BGT closure, except in the case of an emergency, HEC will notify the surface owner of the intent to close the BGT by certified mail no later than 72 hours or 1 week before closure and a copy of this notification will be included in the closure report. In the case of an emergency, the surface owner will be notified as soon as practical.
2. Notice of closure will be given to the Division District office between 72 hours and 1 week of the scheduled closure via email or phone. The notification of closure will include the following:
  - a. Operators Name
  - b. Well Name and API Number
  - c. Location
3. All liquids will be removed from the BGT following cessation of operation. Produced water will be disposed of at one of HEC's approved Salt Water Disposal facilities or at a Division District Office approved facility.
4. Solids and sludge's will be shoveled and/or vacuumed out for disposal at one of the Division District Office approved facilities, depending on the proximity of the BGT site: Envirotech Land Farm (Permit #NM-01-011), Industrial Ecosystems Inc. JFJ Land Farm (Permit #NM-01-0010B), and Basin Disposal (Permit #NM-01-005).
5. HEC will obtain prior approval from the Division District Office to dispose, recycle, reuse, or reclaim the BGT and provide documentation of the disposition of the BGT in the closure report. Steel materials will be recycled or reused as approved by the Division District Office. Fiberglass tanks will be empty, cut up or shredded, and EPA cleaned for disposal as solid waste. Liner materials will be cleaned without soils or contaminated material for disposal as solid waste. Fiberglass tanks and liner materials will meet the conditions of 19.15.35 NMAC. Disposal will be at a licensed disposal facility, presently San Juan County Landfill operated by Waste Management under NMED Permit SWM-052426.
6. Any equipment associated with the BGT that is no longer required for some other purpose, following the closure, will be removed.

Revised 3/15/2016

7. Following removal of the tank and any liner material, HEC will test the soils beneath the BGT as follows:
  - a. At a minimum, a five-point composite sample will be taken to include any obvious stained or wet soils or any other evidence of contamination.
  - b. The laboratory sample shall be analyzed for the constituents listed in Table I of 19.15.17.13.

Table I Closure Criteria for Soils Beneath Below-Grade Tanks, Drying Pads Associated with Closed-Loop Systems and Pits where Contents are Removed			
Depth below bottom of pit to groundwater less than 10,000 mg/l TDS	Constituent	Method*	Limit**
≤50 feet	Chloride	EPA 300.0	600 mg/kg
	TPH	EPA SW-846 Method 418.1	100 mg/kg
	BTEX	EPA SW-846 Method 8021B or 8260B	50 mg/kg
	Benzene	EPA SW-846 Method 8021B or 8015M	10 mg/kg
51 feet-100 feet	Chloride	EPA 300.0	10,000 mg/kg
	TPH	EPA SW-846 Method 418.1	2,500 mg/kg
	GRO+DRO	EPA SW-846 Method 8015M	1,000 mg/kg
	BTEX	EPA SW-846 Method 8021B or 8260B	50 mg/kg
	Benzene	EPA SW-846 Method 8021B or 8015M	10 mg/kg
○ > 100 feet	Chloride	EPA 300.0	20,000 mg/kg
	TPH	EPA SW-846 Method 418.1	2,500 mg/kg
	GRO+DRO	EPA SW-846 Method 8015M	1,000 mg/kg
	BTEX	EPA SW-846 Method 8021B or 8260B	50 mg/kg
	Benzene	EPA SW-846 Method 8021B or 8015M	10 mg/kg

\*Or other test methods approved by the division

\*\*Numerical limits or natural background level, whichever is greater

(19.15.17.13 NMAC-Ro, 19.15.17.13 NMAC 3/28/2013)

8. If the Division District Office and/or HEC determine there is a release, HEC will comply with 19.15.17.13.C.3b.
9. Upon completion of the tank removal, pursuant to 19.15.17.13.C.3c, if all contaminant concentrations are less than or equal to the parameters listed in Table I of 19.15.17.13 NMAC, the excavation will be backfilled with non-waste containing earthen material compacted and covered with a minimum of one foot top soil, or background thickness of top soil, whichever is greater. The surface will then be re-contoured to match the native grade, prevent ponding of water, and prevent erosion of cover material.
10. For those portions of the former BGT area no longer required for production activities, HEC will seed the disturbed area in the first favorable growing season following the closure of the BGT. Seeding will be accomplished via drilling on the contour whenever practical, or by other Division District Office approved methods. HEC will notify the Division District Office when reclamation and re-vegetation is complete.

Reclamation of the BGT shall be considered complete when:

- Established vegetative cover reflects a life form ratio of +/- 50% of pre disturbance levels.
- Total plant cover is at least 70% of pre-disturbance levels (Excluding noxious weeds) OR
- Pursuant to 19.15.17.13.H.5d HEC will comply with obligations imposed by other applicable federal or tribal agencies in which there re-vegetation and reclamation requirements provide equal or better protection of fresh water, human health and the environment.

Revised 3/15/2016

11. For those portions of the former BGT area required for production activities, reseeding will be done at well abandonment, and following the procedure noted above.

Closure Report:

All closure activities will include proper documentation and will be submitted to OCD within 60 days of the BGT closure on a Closure Report using Division District Office Form C-144. The Report will include the following:

- Proof of Closure Notice (surface owner and Division District Office)
- Backfilling & cover installation
- Confirmation Sampling Analytical Results
- Application Rate & Seeding techniques
- Photo Documentation of Reclamation

Revised 3/15/2016

Sante Fe Main Office  
Phone: (505) 476-3441

General Information  
Phone: (505) 629-6116

Online Phone Directory  
<https://www.emnrd.nm.gov/ocd/contact-us>

**State of New Mexico**  
**Energy, Minerals and Natural Resources**  
**Oil Conservation Division**  
**1220 S. St Francis Dr.**  
**Santa Fe, NM 87505**

CONDITIONS

Action 557251

**CONDITIONS**

Operator: HILCORP ENERGY COMPANY 1111 Travis Street Houston, TX 77002	OGRID: 372171
	Action Number: 557251
	Action Type: [C-144] Below Grade Tank Plan (C-144B)

**CONDITIONS**

Created By	Condition	Condition Date
joel.stone	Variations approved: alternate fencing, 48" steel mesh field-fence (hog-wire) on the bottom with a single strand of barbed wire or a welded railing on top (T-posts shall be installed every 12 feet and corners shall be anchored utilizing a secondary T-post); geo-membrane liner consists of a 45-mil flexible LLDPE material reinforced with polyester scrim; and Hilcorp will notify public entity surface owners by email in lieu of certified mail (private entity surface owners will still be notified via certified mail).	3/6/2026