

District I  
1625 N. French Dr., Hobbs, NM 88240  
District II  
811 S. First St., Artesia, NM 88210  
District III  
1000 Rio Brazos Rd., Aztec, NM 87410  
District IV  
1220 S. St. Francis Dr., Santa Fe, NM 87505

State of New Mexico  
Energy, Minerals & Natural  
Resources

Form C-104  
Revised August 1, 2011

Submit one copy to appropriate District Office

Oil Conservation Division  
1220 South St. Francis Dr.

AMENDED REPORT

**I. REQUEST FOR ALLOWABLE MINDS AUTHORIZATION TO TRANSPORT**

<sup>1</sup> Operator name and Address EOG RESOURCES INC PO BOX 2267 MIDLAND, TEXAS 79702		<sup>2</sup> OGRID Number 7377
		<sup>3</sup> Reason for Filing Code/ Effective Date NW 8/30/2022
<sup>4</sup> API Number 30 - 025-47447	<sup>5</sup> Pool Name WC-025 G-08 S253235G; LOWER BONE SPRINGS	<sup>6</sup> Pool Code 97903
<sup>7</sup> Property Code 328894	<sup>8</sup> Property Name MERCILESS 13 FED COM	<sup>9</sup> Well Number 508H

**II. <sup>10</sup> Surface Location**

Ul or lot no.	Section	Township	Range	Lot Idn	Feet from the	North/South Line	Feet from the	East/West line	County
B	13	25S	32E		349'	NORTH	2317'	EAST	LEA

**<sup>11</sup> Bottom Hole Location**

UL or lot no.	Section	Township	Range	Lot Idn	Feet from the	North/South line	Feet from the	East/West line	County
G	24	25S	32E		2533'	NORTH	2545'	EAST	LEA
<sup>12</sup> Lse Code	<sup>13</sup> Producing Method Code FLOWING	<sup>14</sup> Gas Connection Date	<sup>15</sup> C-129 Permit Number	<sup>16</sup> C-129 Effective Date	<sup>17</sup> C-129 Expiration Date				

**III. Oil and Gas Transporters**

<sup>18</sup> Transporter OGRID	<sup>19</sup> Transporter Name and Address	<sup>20</sup> O/G/W
372812	EOGRM	OIL
151618	ENTERPRISE FIELD SERVICES	GAS
298751	REGENCY FIELD SERVICES	GAS
36785	DCP MIDSTREAM	GAS

**IV. Well Completion Data**

<sup>21</sup> Spud Date 5/7/2022	<sup>22</sup> Ready Date 8/30/2022	<sup>23</sup> TD 18,416'	<sup>24</sup> PBDT 18,378'	<sup>25</sup> Perforations 10,907'-18,378'	<sup>26</sup> DHC, MC
<sup>27</sup> Hole Size	<sup>28</sup> Casing & Tubing Size	<sup>29</sup> Depth Set	<sup>30</sup> Sacks Cement		
17 1/2"	13 3/8"	1,080'	1125 SXS CL C/CIRC		
12 1/4"	9 5/8"	4,809'	1685 SXS CL C/CIRC		
7 7/8"	5 1/2"	18,386'	2720 SXS CL C/ CIRC		

**V. Well Test Data**

<sup>31</sup> Date New Oil 8/30/2022	<sup>32</sup> Gas Delivery Date 8/30/2022	<sup>33</sup> Test Date 9/10/2022	<sup>34</sup> Test Length 24 HRS	<sup>35</sup> Tbg. Pressure	<sup>36</sup> Csg. Pressure 628
<sup>37</sup> Choke Size 128	<sup>38</sup> Oil 3762	<sup>39</sup> Water 7305	<sup>40</sup> Gas 6526	<sup>41</sup> Test Method	

<sup>42</sup> I hereby certify that the rules of the Oil Conservation Division have been complied with and that the information given above is true and complete to the best of my knowledge and belief.

Signature: *Kristina Agee*

Printed name: Kristina Agee

Title: REGULATORY SPECIALIST

E-mail Address: kristina\_agee@eogresources.com

Date: 10/25/2022 Phone: 432-686-6996

OIL CONSERVATION DIVISION	
Approved by:	
Title:	
Approval Date:	

District I  
1625 N. French Dr., Hobbs, NM 88240  
Phone: (575) 393-6161 Fax: (575) 393-0720  
District II  
811 S. First St., Artesia, NM 88210  
Phone: (575) 748-1283 Fax: (575) 748-9720  
District III  
1000 Rio Brazos Road, Aztec, NM 87410  
Phone: (505) 334-6178 Fax: (505) 334-6170  
District IV  
1220 S. St. Francis Dr., Santa Fe, NM 87505  
Phone: (505) 476-3460 Fax: (505) 476-3462

State of New Mexico  
Energy, Minerals & Natural Resources  
Department  
OIL CONSERVATION DIVISION  
1220 South St. Francis Dr.  
Santa Fe, NM 87505

FORM C-102

Revised August 1, 2011

Submit one copy to appropriate

District Office

AMENDED REPORT

AS - DRILLED PLAT

<sup>1</sup> API Number <b>30-025-47447</b>		<sup>2</sup> Pool Code <b>97903</b>	<sup>3</sup> Pool Name <b>WC-025 G-08 S253235G; LOWER BONE SPRINGS</b>
<sup>4</sup> Property Code <b>328894</b>	<sup>5</sup> Property Name <b>MERCILESS 13 FED COM</b>		<sup>6</sup> Well Number <b>508H</b>
<sup>7</sup> OGRID No. <b>7377</b>	<sup>8</sup> Operator Name <b>EOG RESOURCES, INC.</b>		<sup>9</sup> Elevation <b>3496'</b>

<sup>10</sup>Surface Location

UL or lot no.	Section	Township	Range	Lot Idn	Feet from the	North/South line	Feet from the	East/West line	County
<b>B</b>	<b>13</b>	<b>25-S</b>	<b>32-E</b>	<b>-</b>	<b>349'</b>	<b>NORTH</b>	<b>2317'</b>	<b>EAST</b>	<b>LEA</b>

<sup>11</sup>Bottom Hole Location If Different From Surface

UL or lot no.	Section	Township	Range	Lot Idn	Feet from the	North/South line	Feet from the	East/West line	County
<b>G</b>	<b>24</b>	<b>25-S</b>	<b>32-E</b>	<b>-</b>	<b>2533'</b>	<b>NORTH</b>	<b>2545'</b>	<b>EAST</b>	<b>LEA</b>

<sup>12</sup> Dedicated Acres <b>480.00</b>	<sup>13</sup> Joint or Infill	<sup>14</sup> Consolidation Code	<sup>15</sup> Order No.
--	-------------------------------	----------------------------------	-------------------------

No allowable will be assigned to this completion until all interests have been consolidated or a non-standard unit has been approved by the division.

**POINT UTM ZONE 13 COORDINATES**

SHL	X=2065166.330	Y=11668058.147
KOP	X=2065011.587	Y=11668343.150
FTP	X=2064985.325	Y=11668063.026
LTP	X=2065028.322	Y=11666063.318
BHL	X=2065029.557	Y=11660593.330

<sup>17</sup>OPERATOR CERTIFICATION

I hereby certify that the information contained herein is true and complete to the best of my knowledge and belief, and that this organization either owns a working interest or unleased mineral interest in the land including the proposed bottom hole location or has a right to drill this well at this location pursuant to a contract with an owner of such a mineral or working interest, or to a voluntary pooling agreement or a compulsory pooling order heretofore entered by the division.

*Kristina Agee* 9/30/2022  
Signature Date

**Kristina Agee**  
Printed Name

kristina\_agee@eogresources.com  
E-mail Address

<sup>18</sup>SURVEYOR CERTIFICATION

I hereby certify that the well location shown on this plat was plotted from field notes of actual surveys made by me or under my supervision, and that the same is true to the best of my belief.

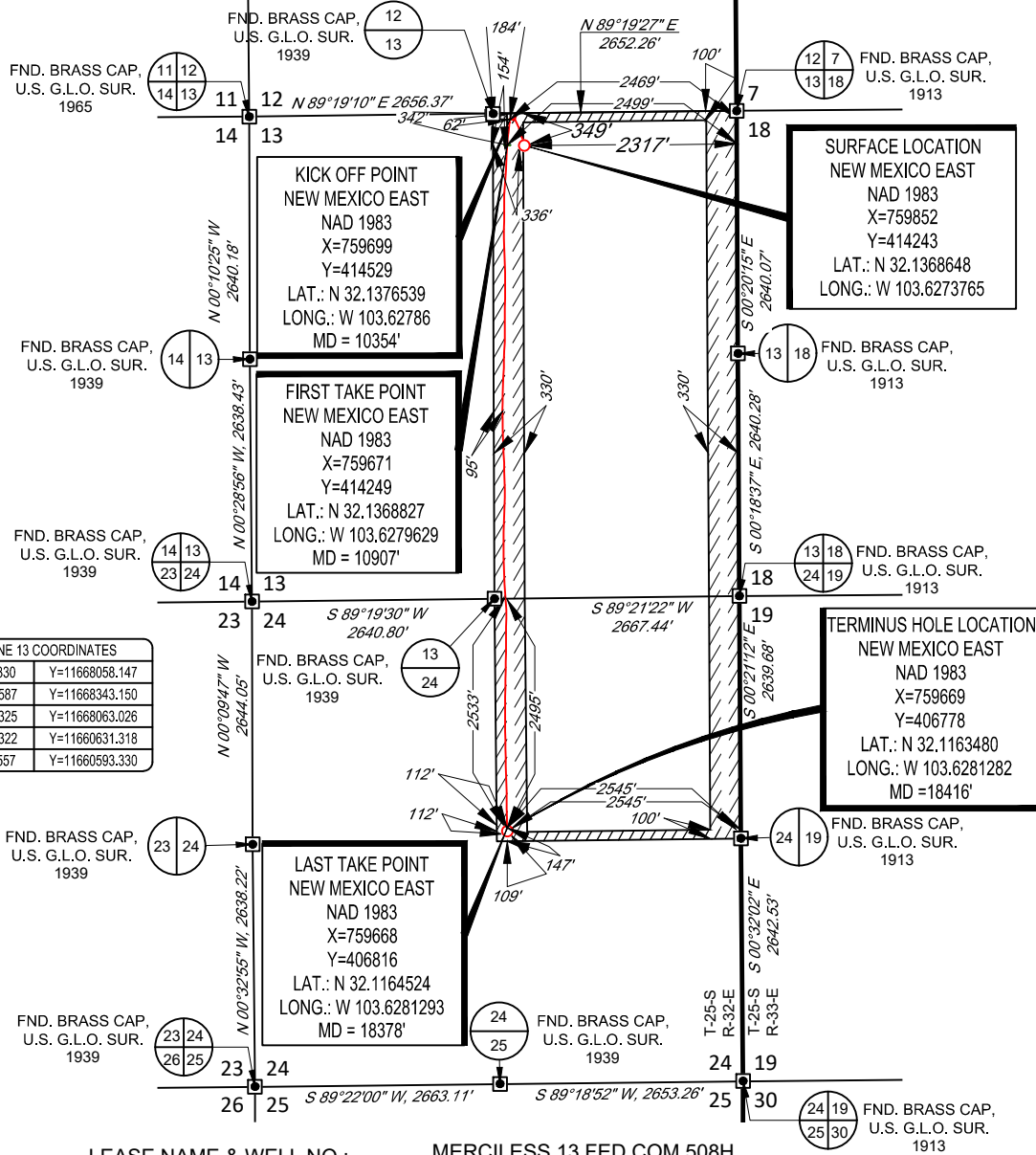
05/05/2022  
Date of Survey

*Ramon A. Dominguez*  
Signature and Seal of Professional Surveyor

24508  
Certificate Number

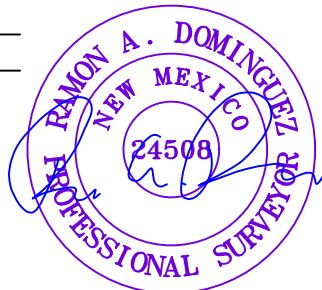
SCALE: 1" = 2000'  
 0' 1000' 2000'

SECTION 13, TOWNSHIP 25-S, RANGE 32-E, N.M.P.M.  
 LEA COUNTY, NEW MEXICO



POINT	UTM ZONE 13 COORDINATES	
SHL	X=2065166.330	Y=11668058.147
KOP	X=2065011.587	Y=11668343.150
FTP	X=2064985.325	Y=11668063.026
LTP	X=2065028.322	Y=11666031.318
BHL	X=2065029.557	Y=11666059.330

LEASE NAME & WELL NO.: MERCILESS 13 FED COM 508H  
 SECTION 13 TWP 25-S RGE 32-E SURVEY N.M.P.M.  
 COUNTY LEA STATE NM ELEVATION 3496'  
 DESCRIPTION 349' FNL & 2317' FEL



**TOPOGRAPHIC**  
 LOYALTY INNOVATION LEGACY  
 1400 EVERMAN PARKWAY, Ste. 146 • FT. WORTH, TEXAS 76140  
 TELEPHONE: (817) 744-7512 • FAX (817) 744-7554  
 2903 NORTH BIG SPRING • MIDLAND, TEXAS 79705  
 TELEPHONE: (432) 682-1653 OR (800) 767-1653 • FAX (432) 682-1743  
 WWW.TOPOGRAPHIC.COM



Ramon A. Dominguez, P.S. No. 24508  
 July 6, 2022

MERCILESS 13 FED COM 508H AS-DRILLED	REVISION:
DATE: 08/25/2022	
FILE:AD_MERCILESS_13_FED_COM_508H	
DRAWN BY: L.S.	
SHEET: 2 OF 2	

NOTES:  
 1. ORIGINAL DOCUMENT SIZE: 8.5" X 11"  
 2. ALL BEARINGS, DISTANCES, AND COORDINATE VALUES CONTAINED HEREIN ARE GRID BASED UPON THE NEW MEXICO COORDINATE SYSTEM OF 1983, EAST ZONE, U.S. SURVEY FEET.  
 3. THIS WELL LOCATION SHOWN HEREON HAS BEEN SURVEYED ON THE GROUND UNDER MY SUPERVISION AND PREPARED ACCORDING TO THE EVIDENCE FOUND AT THE TIME OF SURVEY, AND DATA PROVIDED BY EOG RESOURCES, INC. THIS CERTIFICATION IS MADE AND LIMITED TO THOSE PERSONS OR ENTITIES SHOWN ON THE FACE OF THIS PLAT AND IS NON-TRANSFERABLE. THIS SURVEY IS CERTIFIED FOR THIS TRANSACTION ONLY.



**Lea County, NM (NAD 83 NME)**

**Merciless 13 Fed Com #508H**

**Nabors M1206**

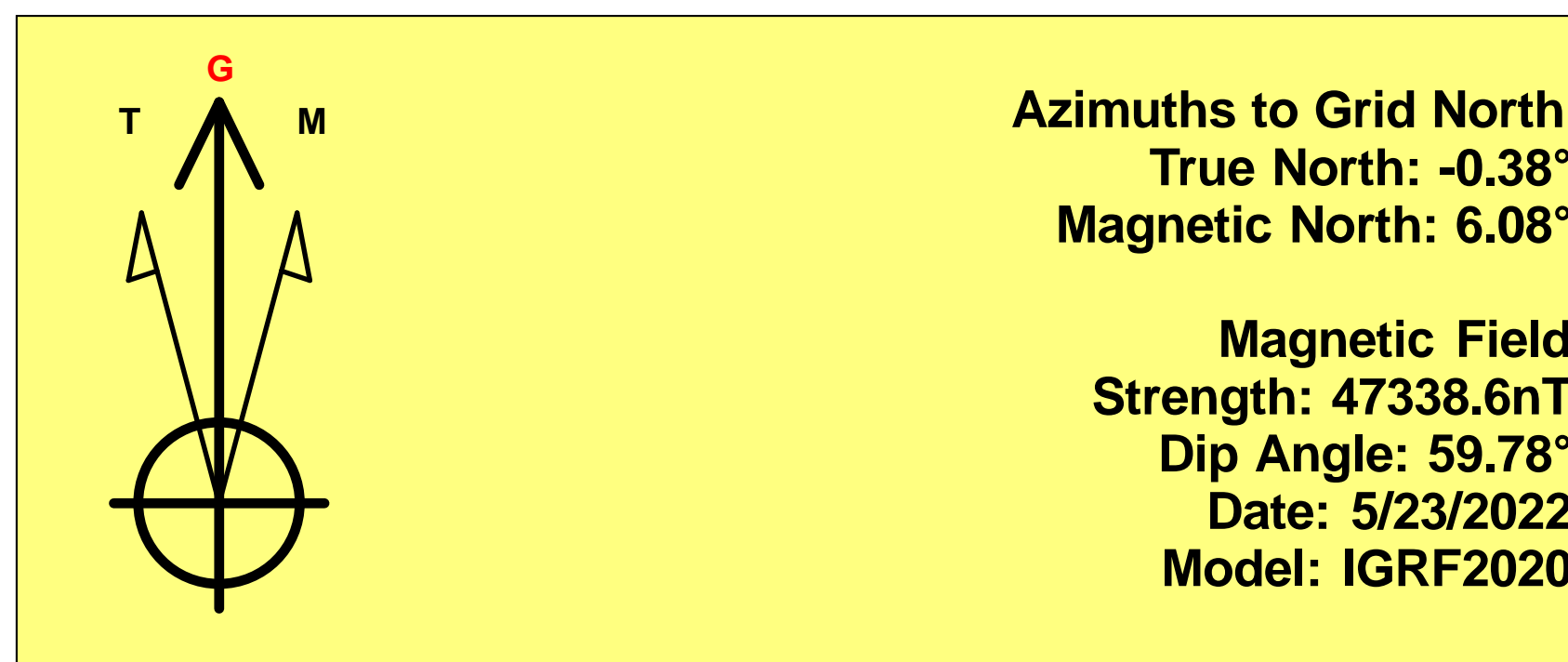
**OH**

PROJECT DETAILS: Lea County, NM (NAD 83 NME)

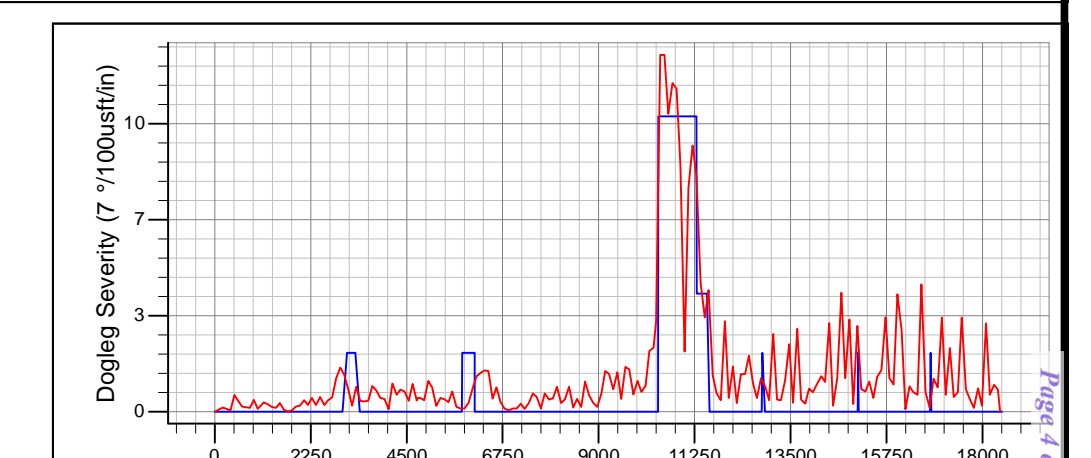
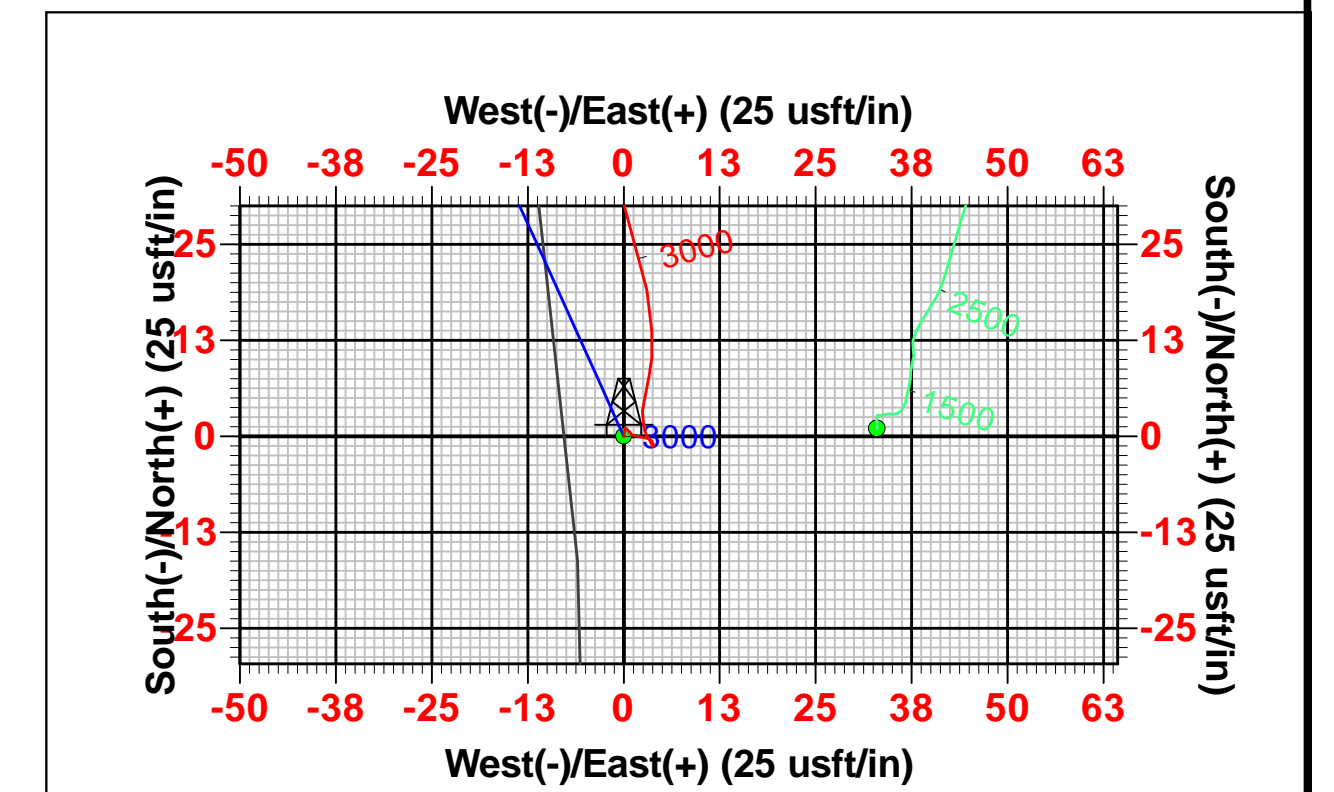
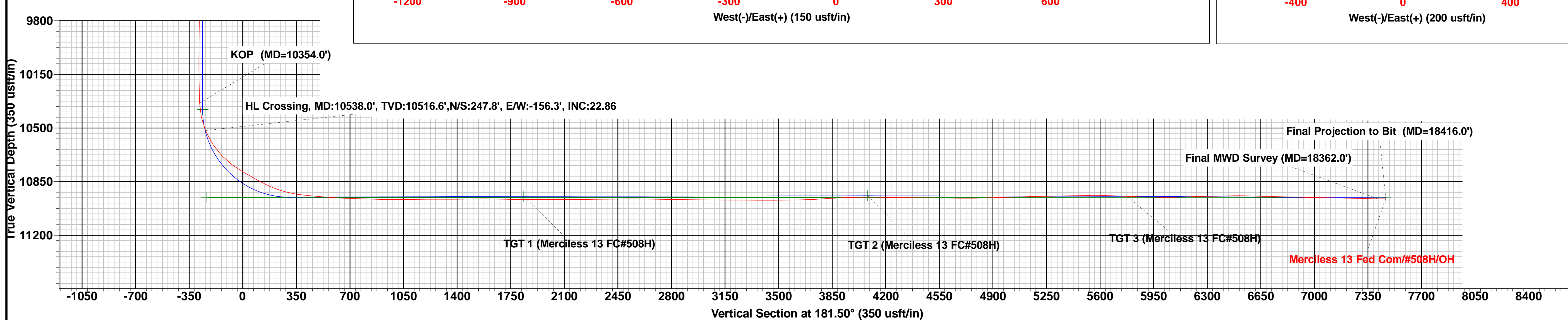
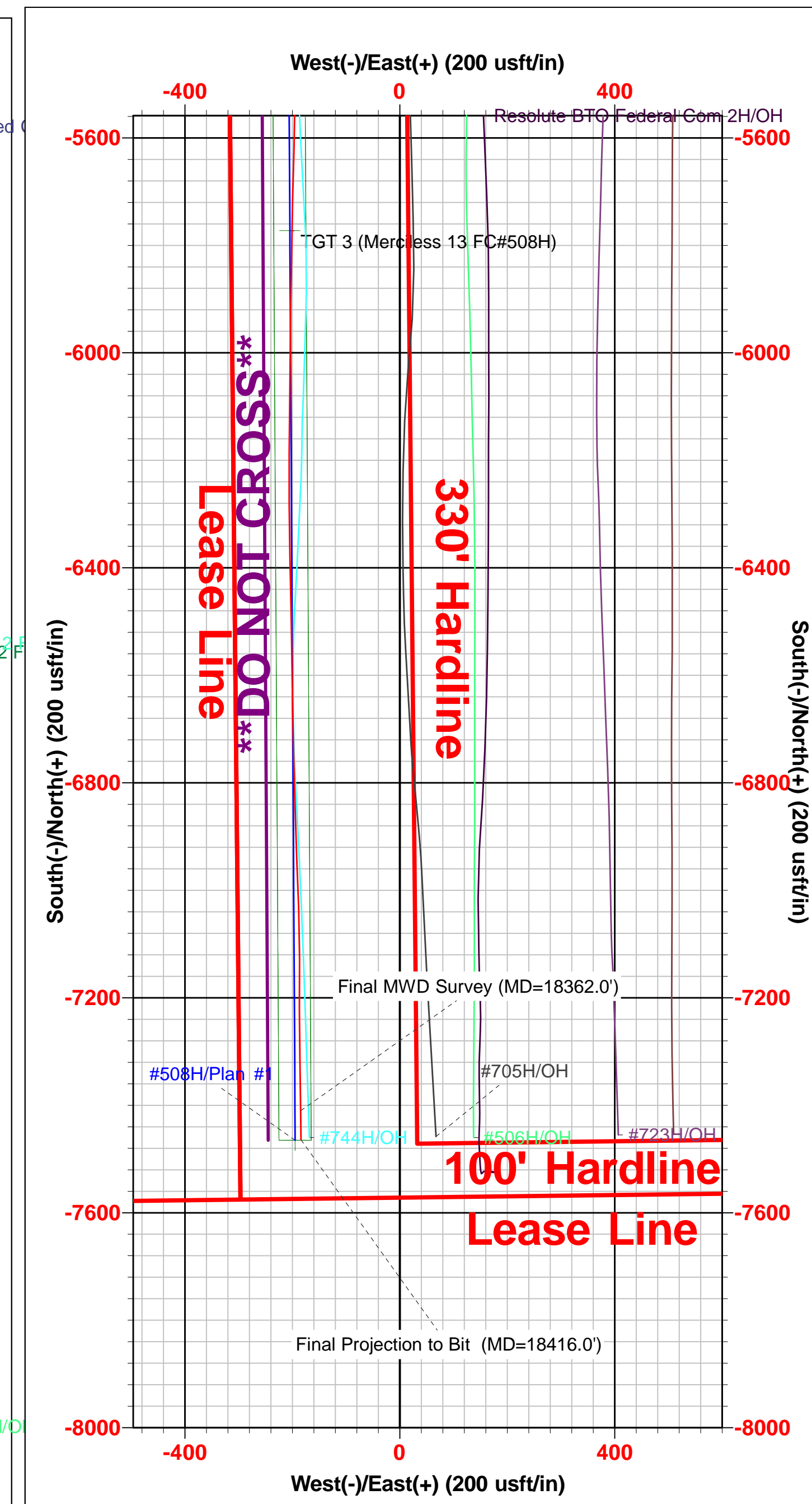
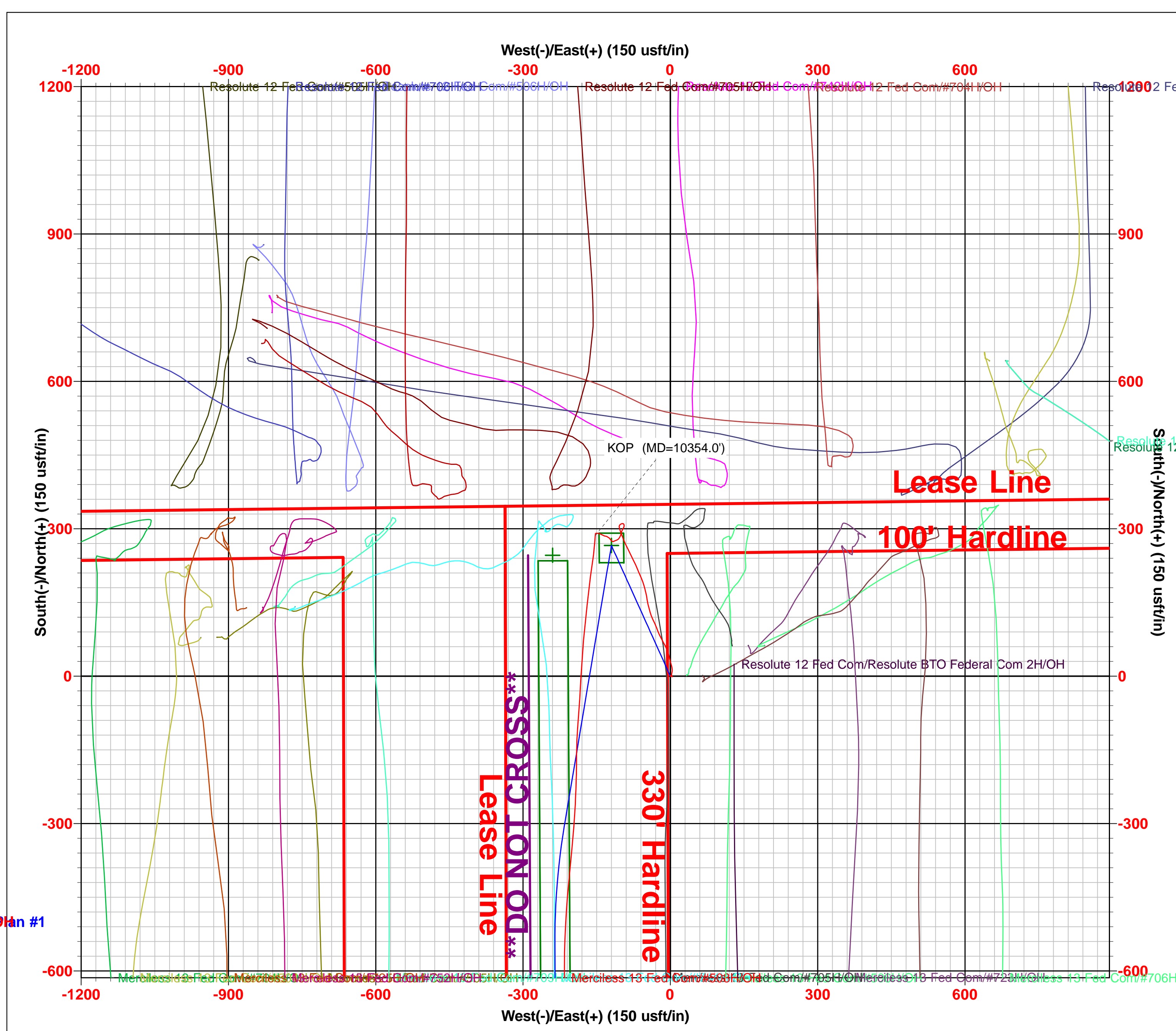
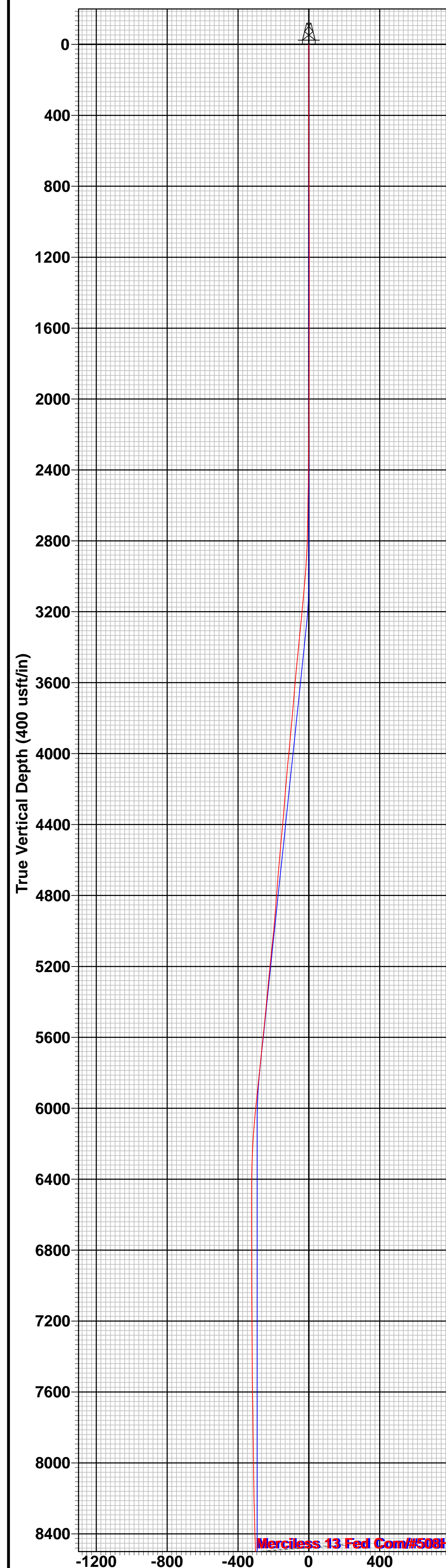
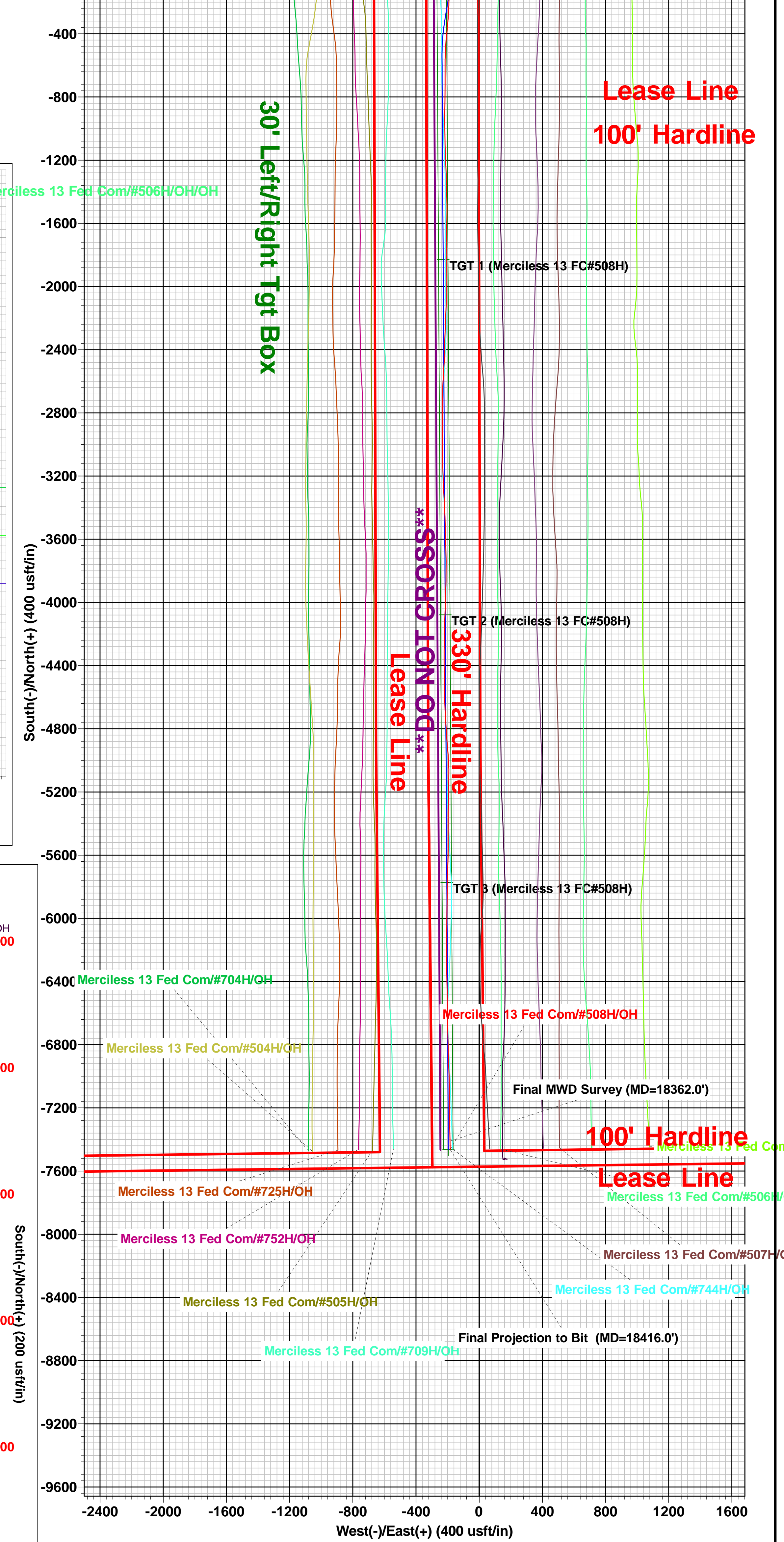
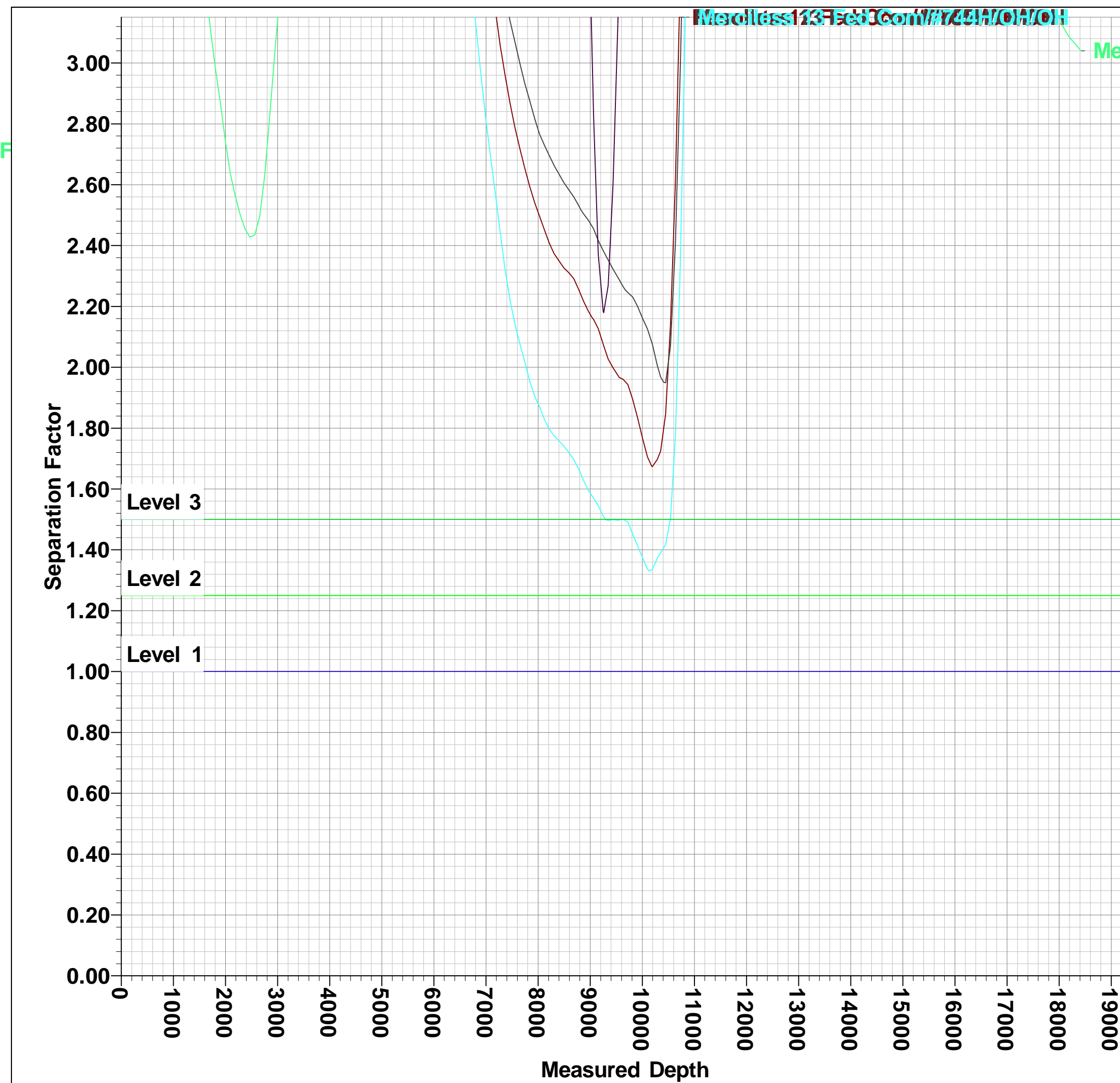
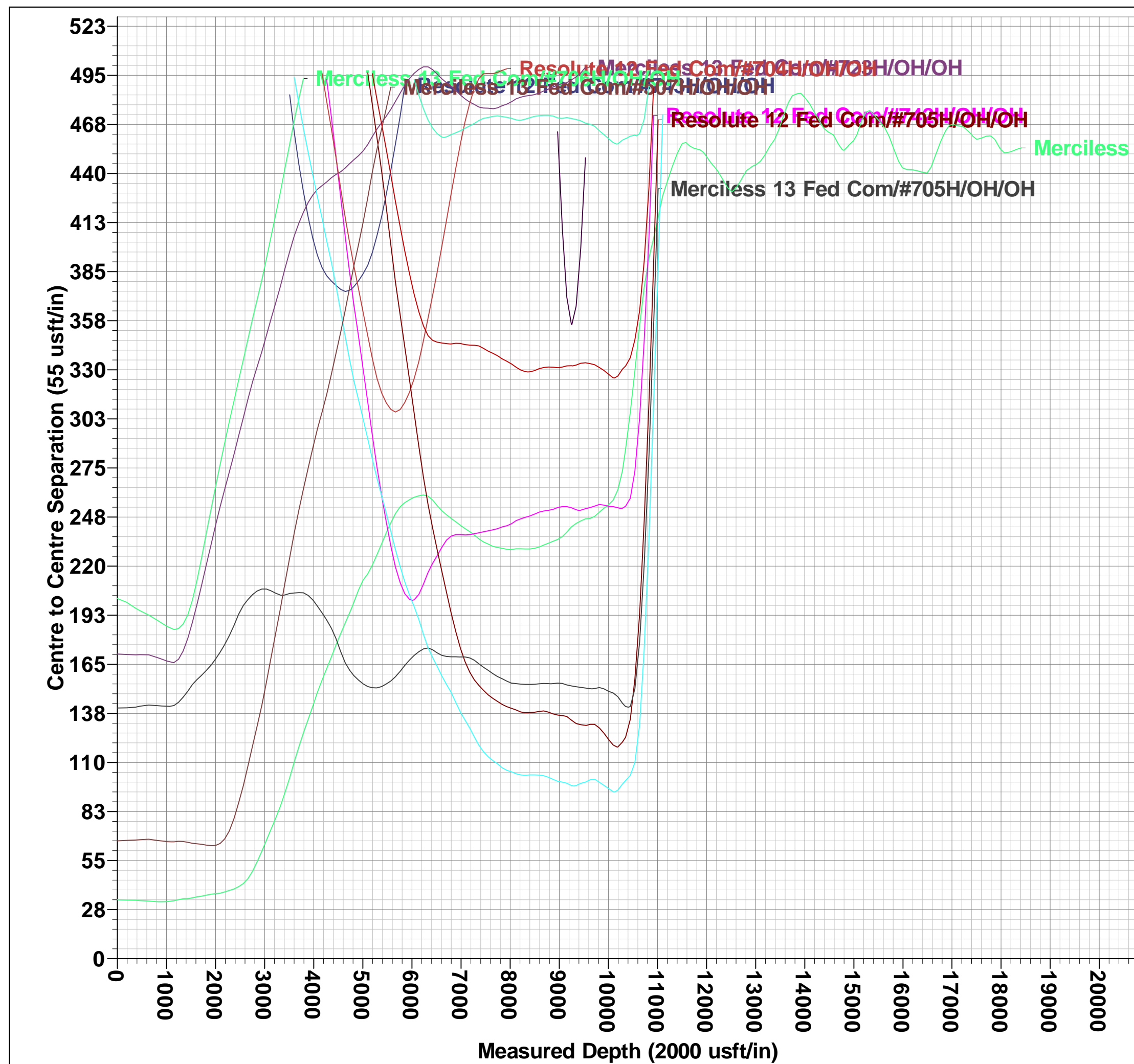
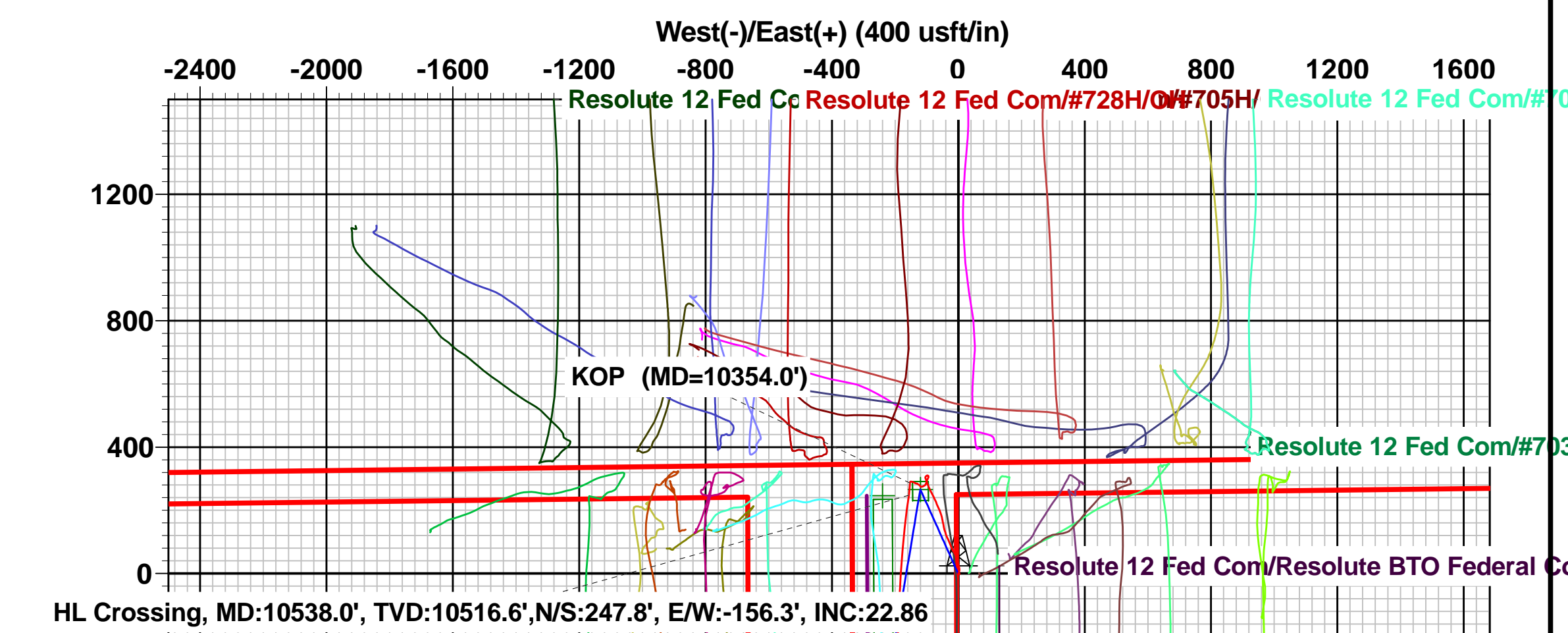
Geodetic System: US State Plane 1983  
 Datum: North American Datum 1983  
 Ellipsoid: GRS 1980  
 Zone: New Mexico Eastern Zone  
 System Datum: Mean Sea Level

WELL DETAILS: #508H

Northings	KB = 32' @ 3528.0usft (Nabors M1206)	3496.0
414243.00	Easting	759852.00
	Latitude	32° 8' 12.711 N
	Longitude	103° 37' 38.560 W



To convert a Magnetic Direction to a Grid Direction, Add 6.08°  
 To convert a Magnetic Direction to a True Direction, Add 6.45° East  
 To convert a True Direction to a Grid Direction, Subtract 0.38°





## Midland

Lea County, NM (NAD 83 NME)

Merciless 13 Fed Com

#508H

OH

Design: OH

## Final PVA

05 July, 2022



Final PVA

<b>Company:</b>	Midland	<b>Local Co-ordinate Reference:</b>	Well #508H
<b>Project:</b>	Lea County, NM (NAD 83 NME)	<b>TVD Reference:</b>	KB = 32' @ 3528.0usft (Nabors M1206)
<b>Site:</b>	Merciless 13 Fed Com	<b>MD Reference:</b>	KB = 32' @ 3528.0usft (Nabors M1206)
<b>Well:</b>	#508H	<b>North Reference:</b>	Grid
<b>Wellbore:</b>	OH	<b>Survey Calculation Method:</b>	Minimum Curvature
<b>Design:</b>	OH	<b>Database:</b>	PEDM

<b>Project</b>	Lea County, NM (NAD 83 NME)		
<b>Map System:</b>	US State Plane 1983	<b>System Datum:</b>	Mean Sea Level
<b>Geo Datum:</b>	North American Datum 1983		
<b>Map Zone:</b>	New Mexico Eastern Zone		

<b>Site</b>	Merciless 13 Fed Com		
<b>Site Position:</b>		<b>Northing:</b>	414,304.00 usft
<b>From:</b>	Map	<b>Easting:</b>	757,406.00 usft
<b>Position Uncertainty:</b>	0.0 usft	<b>Slot Radius:</b>	13-3/16 "
		<b>Latitude:</b>	32° 8' 13.472 N
		<b>Longitude:</b>	103° 38' 7.002 W
		<b>Grid Convergence:</b>	0.37 °

<b>Well</b>	#508H					
<b>Well Position</b>	<b>+N/-S</b>	0.0 usft	<b>Northing:</b>	414,243.00 usft	<b>Latitude:</b>	32° 8' 12.711 N
	<b>+E/-W</b>	0.0 usft	<b>Easting:</b>	759,852.00 usft	<b>Longitude:</b>	103° 37' 38.560 W
<b>Position Uncertainty</b>		0.0 usft	<b>Wellhead Elevation:</b>	usft	<b>Ground Level:</b>	3,496.0 usft

<b>Wellbore</b>	OH				
<b>Magnetics</b>	<b>Model Name</b>	<b>Sample Date</b>	<b>Declination (°)</b>	<b>Dip Angle (°)</b>	<b>Field Strength (nT)</b>
	IGRF2020	5/23/2022	6.45	59.78	47,338.58733568

<b>Design</b>	OH				
<b>Audit Notes:</b>					
<b>Version:</b>	1.0	<b>Phase:</b>	ACTUAL	<b>Tie On Depth:</b>	0.0
<b>Vertical Section:</b>		<b>Depth From (TVD) (usft)</b>	<b>+N/-S (usft)</b>	<b>+E/-W (usft)</b>	<b>Direction (°)</b>
		0.0	0.0	0.0	181.50

<b>Survey Program</b>	Date 7/5/2022			
<b>From (usft)</b>	<b>To (usft)</b>	<b>Survey (Wellbore)</b>	<b>Tool Name</b>	<b>Description</b>
191.0	18,416.0	DrilTech MWD #1 (OH)	EOG MWD+IFR1	MWD + IFR1



Final PVA

<b>Company:</b>	Midland	<b>Local Co-ordinate Reference:</b>	Well #508H
<b>Project:</b>	Lea County, NM (NAD 83 NME)	<b>TVD Reference:</b>	KB = 32' @ 3528.0usft (Nabors M1206)
<b>Site:</b>	Merciless 13 Fed Com	<b>MD Reference:</b>	KB = 32' @ 3528.0usft (Nabors M1206)
<b>Well:</b>	#508H	<b>North Reference:</b>	Grid
<b>Wellbore:</b>	OH	<b>Survey Calculation Method:</b>	Minimum Curvature
<b>Design:</b>	OH	<b>Database:</b>	PEDM

Survey											
MD (usft)	Inc (°)	Azi (azimuth) (°)	TVD (usft)	N/S (usft)	E/W (usft)	DLeg (°/100usft)	Build (°/100usft)	Turn (°/100usft)	High to Plan (usft)	Right to Plan (usft)	
0.0	0.00	0.00	0.0	0.0	0.0	0.00	0.00	0.00	0.0	0.0	0.0
191.0	0.26	9.50	191.0	0.4	0.1	0.14	0.14	0.00	-0.4	0.0	
370.0	0.18	15.92	370.0	1.1	0.2	0.05	-0.04	3.59	-1.1	0.1	
460.0	0.35	160.23	460.0	1.0	0.3	0.56	0.19	160.34	0.8	0.7	
640.0	0.44	116.64	640.0	0.1	1.2	0.17	0.05	-24.22	-1.0	0.6	
827.0	0.53	88.78	827.0	-0.2	2.7	0.13	0.05	-14.90	-2.7	-0.2	
921.0	0.35	133.95	921.0	-0.3	3.3	0.40	-0.19	48.05	-2.6	2.0	
1,009.0	0.35	120.33	1,009.0	-0.7	3.7	0.09	0.00	-15.48	-3.6	1.3	
1,152.0	0.26	213.32	1,152.0	-1.2	3.9	0.31	-0.06	65.03	1.2	3.9	
1,247.0	0.09	277.13	1,247.0	-1.3	3.7	0.25	-0.18	67.17	3.9	0.9	
1,341.0	0.09	32.79	1,341.0	-1.3	3.7	0.16	0.00	123.04	-0.9	-3.8	
1,435.0	0.09	118.31	1,435.0	-1.2	3.8	0.13	0.00	90.98	-3.9	0.7	
1,528.0	0.18	315.01	1,528.0	-1.2	3.8	0.29	0.10	-175.59	3.5	-1.8	
1,623.0	0.18	336.19	1,623.0	-0.9	3.6	0.07	0.00	22.29	2.3	-2.9	
1,717.0	0.18	330.74	1,717.0	-0.7	3.5	0.02	0.00	-5.80	2.3	-2.7	
1,811.0	0.18	343.75	1,811.0	-0.4	3.4	0.04	0.00	13.84	1.3	-3.1	
1,905.0	0.18	288.03	1,905.0	-0.2	3.2	0.18	0.00	-59.28	3.1	-0.8	
1,999.0	0.18	352.71	1,999.0	0.0	3.0	0.20	0.00	68.81	0.4	-3.0	
2,092.0	0.53	338.12	2,092.0	0.5	2.8	0.39	0.38	-15.69	0.6	-2.8	
2,186.0	0.35	352.62	2,186.0	1.2	2.6	0.22	-0.19	15.43	-0.9	-2.8	
2,280.0	0.79	351.48	2,280.0	2.2	2.5	0.47	0.47	-1.21	-1.8	-2.8	
2,375.0	0.62	2.82	2,375.0	3.3	2.4	0.23	-0.18	11.94	-3.4	-2.3	
2,470.0	1.06	14.77	2,470.0	4.7	2.7	0.50	0.46	12.58	-5.2	-1.4	
2,564.0	0.88	7.74	2,563.9	6.2	3.0	0.23	-0.19	-7.48	-6.6	-2.1	
2,658.0	1.23	14.16	2,657.9	7.9	3.3	0.39	0.37	6.83	-8.5	-1.3	
2,753.0	1.58	1.50	2,752.9	10.2	3.6	0.49	0.37	-13.33	-10.3	-3.4	
2,847.0	2.64	0.36	2,846.8	13.7	3.7	1.13	1.13	-1.21	-13.7	-3.6	



Final PVA

<b>Company:</b>	Midland	<b>Local Co-ordinate Reference:</b>	Well #508H
<b>Project:</b>	Lea County, NM (NAD 83 NME)	<b>TVD Reference:</b>	KB = 32' @ 3528.0usft (Nabors M1206)
<b>Site:</b>	Merciless 13 Fed Com	<b>MD Reference:</b>	KB = 32' @ 3528.0usft (Nabors M1206)
<b>Well:</b>	#508H	<b>North Reference:</b>	Grid
<b>Wellbore:</b>	OH	<b>Survey Calculation Method:</b>	Minimum Curvature
<b>Design:</b>	OH	<b>Database:</b>	PEDM

Survey												
MD (usft)	Inc (°)	Azi (azimuth) (°)	TVD (usft)	N/S (usft)	E/W (usft)	DLeg (°/100usft)	Build (°/100usft)	Turn (°/100usft)	High to Plan (usft)	Right to Plan (usft)		
2,942.0	3.87	347.70	2,941.7	19.0	3.0	1.49	1.29	-13.33	-17.9	-7.0		
3,036.0	5.01	343.66	3,035.4	26.0	1.2	1.26	1.21	-4.30	-24.4	-8.5		
3,131.0	5.72	345.33	3,130.0	34.6	-1.2	0.77	0.75	1.76	-30.8	-8.1		
3,225.0	5.54	346.21	3,223.5	43.5	-3.5	0.21	-0.19	0.94	-34.4	-8.6		
3,319.0	5.63	338.04	3,317.1	52.2	-6.3	0.85	0.10	-8.69	-33.1	-14.4		
3,414.0	5.54	334.52	3,411.6	60.7	-10.0	0.37	-0.09	-3.71	-31.4	-16.5		
3,508.0	5.63	331.27	3,505.2	68.8	-14.2	0.35	0.10	-3.46	-29.8	-17.8		
3,603.0	5.28	332.15	3,599.7	76.8	-18.4	0.38	-0.37	0.93	-29.2	-16.6		
3,697.0	4.48	333.82	3,693.4	83.9	-22.1	0.86	-0.85	1.78	-27.8	-15.3		
3,791.0	5.01	338.74	3,787.1	91.0	-25.2	0.71	0.56	5.23	-27.0	-13.1		
3,886.0	5.45	339.27	3,881.7	99.1	-28.3	0.47	0.46	0.56	-25.8	-13.4		
3,980.0	5.45	334.96	3,975.3	107.3	-31.8	0.44	0.00	-4.59	-23.9	-15.5		
4,075.0	5.45	334.08	4,069.8	115.5	-35.6	0.09	0.00	-0.93	-22.7	-15.7		
4,170.0	4.75	340.67	4,164.5	123.2	-38.9	0.96	-0.74	6.94	-22.9	-13.3		
4,264.0	4.31	344.63	4,258.2	130.3	-41.1	0.57	-0.47	4.21	-21.4	-12.9		
4,358.0	5.01	343.48	4,351.9	137.7	-43.2	0.75	0.74	-1.22	-19.1	-14.8		
4,452.0	5.54	347.35	4,445.5	146.0	-45.4	0.68	0.56	4.12	-19.0	-15.2		
4,546.0	5.63	350.78	4,539.0	155.0	-47.1	0.37	0.10	3.65	-19.5	-16.3		
4,640.0	4.75	349.90	4,632.6	163.4	-48.5	0.94	-0.94	-0.94	-18.3	-19.0		
4,734.0	4.75	345.59	4,726.3	171.0	-50.2	0.38	0.00	-4.59	-14.9	-22.3		
4,756.0	4.66	346.21	4,748.2	172.7	-50.6	0.47	-0.41	2.82	-14.7	-22.6		
4,815.0	4.40	347.26	4,807.0	177.3	-51.7	0.46	-0.44	1.78	-13.7	-23.5		
4,910.0	4.48	342.52	4,901.8	184.4	-53.6	0.40	0.08	-4.99	-9.2	-26.0		
5,005.0	5.45	340.67	4,996.4	192.2	-56.2	1.03	1.02	-1.95	-6.7	-27.3		
5,099.0	6.07	336.10	5,089.9	200.9	-59.7	0.82	0.66	-4.86	-4.1	-28.1		
5,193.0	5.89	336.19	5,183.4	209.9	-63.7	0.19	-0.19	0.10	-4.1	-28.2		
5,287.0	5.54	338.83	5,276.9	218.5	-67.3	0.47	-0.37	2.81	-4.9	-28.3		



Final PVA

<b>Company:</b>	Midland	<b>Local Co-ordinate Reference:</b>	Well #508H
<b>Project:</b>	Lea County, NM (NAD 83 NME)	<b>TVD Reference:</b>	KB = 32' @ 3528.0usft (Nabors M1206)
<b>Site:</b>	Merciless 13 Fed Com	<b>MD Reference:</b>	KB = 32' @ 3528.0usft (Nabors M1206)
<b>Well:</b>	#508H	<b>North Reference:</b>	Grid
<b>Wellbore:</b>	OH	<b>Survey Calculation Method:</b>	Minimum Curvature
<b>Design:</b>	OH	<b>Database:</b>	PEDM

Survey												
MD (usft)	Inc (°)	Azi (azimuth) (°)	TVD (usft)	N/S (usft)	E/W (usft)	DLeg (°/100usft)	Build (°/100usft)	Turn (°/100usft)	High to Plan (usft)	Right to Plan (usft)		
5,382.0	5.28	335.57	5,371.5	226.8	-70.7	0.42	-0.27	-3.43	-2.3	-28.8		
5,476.0	5.45	332.85	5,465.1	234.7	-74.6	0.33	0.18	-2.89	0.0	-28.6		
5,570.0	6.07	334.70	5,558.6	243.1	-78.7	0.69	0.66	1.97	-0.5	-28.2		
5,665.0	6.07	333.29	5,653.1	252.2	-83.1	0.16	0.00	-1.48	0.1	-27.9		
5,759.0	5.98	333.82	5,746.6	261.0	-87.5	0.11	-0.10	0.56	-0.2	-27.6		
5,854.0	5.98	334.78	5,841.1	269.9	-91.8	0.11	0.00	1.01	-1.3	-27.3		
5,949.0	5.98	337.60	5,935.6	279.0	-95.8	0.31	0.00	2.97	-6.3	-27.2		
6,043.0	5.36	341.37	6,029.1	287.7	-99.1	0.77	-0.66	4.01	-14.2	-26.7		
6,138.0	4.22	340.50	6,123.8	295.2	-101.7	1.20	-1.20	-0.92	-21.3	-27.0		
6,232.0	2.99	342.69	6,217.6	300.8	-103.5	1.32	-1.31	2.33	-28.3	-26.1		
6,326.0	2.02	335	6,311.5	304.8	-104.2	1.39	-1.03	21.98	-39.6	-13.5		
6,420.0	1.76	42.72	6,405.4	307.5	-103.1	1.38	-0.28	41.88	-41.9	15.7		
6,515.0	1.49	54.13	6,500.4	309.3	-101.1	0.44	-0.28	12.01	-40.7	24.0		
6,609.0	0.79	72.50	6,594.4	310.2	-99.5	0.83	-0.74	19.54	-32.8	36.0		
6,704.0	0.53	87.26	6,689.4	310.4	-98.4	0.32	-0.27	15.54	-23.7	43.3		
6,798.0	0.44	92.19	6,783.4	310.4	-97.6	0.11	-0.10	5.24	-20.6	45.2		
6,893.0	0.44	97.72	6,878.4	310.3	-96.9	0.04	0.00	5.82	-16.9	47.0		
6,987.0	0.35	90.25	6,972.4	310.3	-96.3	0.11	-0.10	-7.95	-23.5	44.4		
7,081.0	0.35	106.95	7,066.4	310.2	-95.7	0.11	0.00	17.77	-10.3	49.4		
7,176.0	0.35	150.90	7,161.4	309.9	-95.3	0.28	0.00	46.26	26.3	42.9		
7,270.0	0.44	152.21	7,255.4	309.3	-95.0	0.10	0.10	1.39	26.6	42.3		
7,365.0	0.70	143.07	7,350.4	308.5	-94.5	0.29	0.27	-9.62	18.6	46.0		
7,459.0	0.35	198.88	7,444.3	307.8	-94.2	0.62	-0.37	59.37	47.9	10.9		
7,553.0	0.79	179.55	7,538.3	306.9	-94.3	0.50	0.47	-20.56	40.7	26.0		
7,648.0	0.88	175.33	7,633.3	305.5	-94.2	0.11	0.09	-4.44	37.2	28.9		
7,742.0	1.23	200.91	7,727.3	303.8	-94.5	0.62	0.37	27.21	44.4	10.3		
7,837.0	0.97	216.20	7,822.3	302.2	-95.4	0.41	-0.27	16.09	43.8	-1.5		



Final PVA

<b>Company:</b>	Midland	<b>Local Co-ordinate Reference:</b>	Well #508H
<b>Project:</b>	Lea County, NM (NAD 83 NME)	<b>TVD Reference:</b>	KB = 32' @ 3528.0usft (Nabors M1206)
<b>Site:</b>	Merciless 13 Fed Com	<b>MD Reference:</b>	KB = 32' @ 3528.0usft (Nabors M1206)
<b>Well:</b>	#508H	<b>North Reference:</b>	Grid
<b>Wellbore:</b>	OH	<b>Survey Calculation Method:</b>	Minimum Curvature
<b>Design:</b>	OH	<b>Database:</b>	PEDM

Survey												
MD (usft)	Inc (°)	Azi (azimuth) (°)	TVD (usft)	N/S (usft)	E/W (usft)	DLeg (°/100usft)	Build (°/100usft)	Turn (°/100usft)	High to Plan (usft)	Right to Plan (usft)		
7,932.0	1.06	192.21	7,917.3	300.7	-96.0	0.45	0.09	-25.25	39.0	16.1		
8,026.0	1.67	214.44	8,011.3	298.7	-97.0	0.85	0.65	23.65	40.0	0.5		
8,120.0	1.41	211.72	8,105.2	296.6	-98.4	0.29	-0.28	-2.89	37.4	2.3		
8,214.0	1.32	195.55	8,199.2	294.6	-99.3	0.42	-0.10	-17.20	33.1	12.3		
8,308.0	2.11	192.21	8,293.2	291.9	-99.9	0.85	0.84	-3.55	29.5	14.2		
8,402.0	2.11	195.72	8,387.1	288.5	-100.8	0.14	0.00	3.73	26.9	12.4		
8,496.0	2.29	205.13	8,481.0	285.1	-102.0	0.43	0.19	10.01	24.9	8.1		
8,590.0	2.37	208.47	8,574.9	281.7	-103.8	0.17	0.09	3.55	21.6	6.8		
8,684.0	1.76	229.56	8,668.9	279.1	-105.8	1.03	-0.65	22.44	19.3	-0.7		
8,779.0	1.58	246.26	8,763.8	277.6	-108.1	0.54	-0.19	17.58	15.6	-5.8		
8,873.0	1.85	244.06	8,857.8	276.4	-110.6	0.30	0.29	-2.34	13.0	-5.3		
8,968.0	1.85	248.98	8,952.8	275.2	-113.5	0.17	0.00	5.18	9.4	-6.2		
9,062.0	1.32	240.55	9,046.7	274.1	-115.8	0.61	-0.56	-8.97	7.6	-5.0		
9,155.0	1.41	296.36	9,139.7	274.1	-117.8	1.38	0.10	60.01	-1.6	-8.2		
9,249.0	2.46	314.20	9,233.6	276.0	-120.3	1.27	1.12	18.98	-7.2	-7.0		
9,344.0	2.29	331.25	9,328.6	279.1	-122.6	0.76	-0.18	17.95	-12.8	-4.0		
9,438.0	2.11	298.64	9,422.5	281.6	-125.1	1.33	-0.19	-34.69	-11.9	-11.3		
9,533.0	2.46	304.09	9,517.4	283.6	-128.3	0.43	0.37	5.74	-16.7	-9.9		
9,628.0	1.49	271.83	9,612.4	284.7	-131.2	1.52	-1.02	-33.96	-11.8	-18.4		
9,722.0	2.64	291.79	9,706.3	285.6	-134.4	1.43	1.22	21.23	-20.7	-12.8		
9,816.0	3.17	294.95	9,800.2	287.5	-138.8	0.59	0.56	3.36	-26.1	-11.6		
9,910.0	2.20	295.92	9,894.1	289.4	-142.8	1.03	-1.03	1.03	-30.7	-11.1		
10,005.0	2.55	282.91	9,989.0	290.6	-146.5	0.67	0.37	-13.69	-31.3	-18.1		
10,099.0	2.29	264.19	10,082.9	290.9	-150.4	0.88	-0.28	-19.91	-27.7	-27.9		
10,194.0	0.53	218.66	10,177.9	290.4	-152.5	2.06	-1.85	-47.93	-1.3	-40.6		
10,288.0	2.37	172.43	10,271.9	288.1	-152.6	2.17	1.96	-49.18	26.2	-29.4		
10,353.0	1.76	228.07	10,336.8	286.1	-153.1	3.08	-0.94	85.60	-11.2	-37.1		



Final PVA

<b>Company:</b>	Midland	<b>Local Co-ordinate Reference:</b>	Well #508H
<b>Project:</b>	Lea County, NM (NAD 83 NME)	<b>TVD Reference:</b>	KB = 32' @ 3528.0usft (Nabors M1206)
<b>Site:</b>	Merciless 13 Fed Com	<b>MD Reference:</b>	KB = 32' @ 3528.0usft (Nabors M1206)
<b>Well:</b>	#508H	<b>North Reference:</b>	Grid
<b>Wellbore:</b>	OH	<b>Survey Calculation Method:</b>	Minimum Curvature
<b>Design:</b>	OH	<b>Database:</b>	PEDM

Survey										
MD (usft)	Inc (°)	Azi (azimuth) (°)	TVD (usft)	N/S (usft)	E/W (usft)	DLeg (°/100usft)	Build (°/100usft)	Turn (°/100usft)	High to Plan (usft)	Right to Plan (usft)
10,354.0	1.83	224.89	10,337.8	286.1	-153.1	12.08	6.84	-318.19	-9.2	-37.7
<b>KOP (MD=10354.0')</b>										
10,447.0	12.40	177.70	10,430.0	275.0	-153.8	12.08	11.37	-50.74	12.4	-33.0
10,538.0	22.86	189.45	10,516.6	247.8	-156.3	12.08	11.49	12.91	-6.9	-32.8
<b>HL Crossing, MD:10538.0', TVD:10516.6',N/S:247.8', E/W:-156.3', INC:22.86</b>										
10,541.0	23.21	189.66	10,519.4	246.6	-156.5	12.08	11.77	7.03	-7.5	-32.8
10,636.0	32.71	187.02	10,603.2	202.6	-162.8	10.08	10.00	-2.78	-20.6	-32.6
10,731.0	43.26	186.05	10,678.0	144.5	-169.4	11.12	11.11	-1.02	-35.2	-30.5
10,826.0	53.64	185.70	10,740.9	73.9	-176.6	10.93	10.93	-0.37	-51.1	-26.7
10,920.0	61.03	182.63	10,791.6	-4.9	-182.3	8.33	7.86	-3.27	-64.2	-21.1
11,015.0	60.23	184.65	10,838.2	-87.6	-187.5	2.04	-0.84	2.13	-66.4	-10.4
11,109.0	66.13	180.16	10,880.6	-171.3	-191.0	7.59	6.28	-4.78	-54.8	0.2
11,204.0	74.22	183.15	10,912.8	-260.5	-193.6	9.01	8.52	3.15	-37.6	14.4
11,298.0	81.34	185.61	10,932.7	-352.1	-200.7	7.99	7.57	2.62	-19.0	22.1
11,392.0	85.38	184.91	10,943.6	-445.0	-209.2	4.36	4.30	-0.74	-7.8	22.8
11,486.0	85.03	181.92	10,951.4	-538.5	-214.8	3.19	-0.37	-3.18	0.5	20.3
11,581.0	87.85	179.20	10,957.3	-633.3	-215.7	4.12	2.97	-2.86	6.7	18.9
11,675.0	88.02	180.34	10,960.7	-727.3	-215.3	1.23	0.18	1.21	10.4	18.7
11,770.0	88.29	180.87	10,963.8	-822.2	-216.3	0.63	0.28	0.56	13.9	17.2
11,864.0	88.20	180.52	10,966.7	-916.2	-217.5	0.38	-0.10	-0.37	17.1	15.5
11,959.0	90.75	179.11	10,967.5	-1,011.1	-217.2	3.07	2.68	-1.48	18.3	15.2
12,053.0	91.01	178.76	10,966.1	-1,105.1	-215.4	0.46	0.28	-0.37	17.3	16.4
12,147.0	89.96	177.79	10,965.3	-1,199.1	-212.6	1.52	-1.12	-1.03	16.8	18.7
12,242.0	89.87	177.53	10,965.4	-1,294.0	-208.7	0.29	-0.09	-0.27	17.4	22.0
12,336.0	90.57	178.49	10,965.1	-1,387.9	-205.4	1.26	0.74	1.02	17.4	24.8
12,430.0	90.92	179.64	10,963.8	-1,481.9	-203.9	1.28	0.37	1.22	16.5	25.8
12,525.0	89.78	181.04	10,963.3	-1,576.9	-204.5	1.90	-1.20	1.47	16.3	24.6



Final PVA

<b>Company:</b>	Midland	<b>Local Co-ordinate Reference:</b>	Well #508H
<b>Project:</b>	Lea County, NM (NAD 83 NME)	<b>TVD Reference:</b>	KB = 32' @ 3528.0usft (Nabors M1206)
<b>Site:</b>	Merciless 13 Fed Com	<b>MD Reference:</b>	KB = 32' @ 3528.0usft (Nabors M1206)
<b>Well:</b>	#508H	<b>North Reference:</b>	Grid
<b>Wellbore:</b>	OH	<b>Survey Calculation Method:</b>	Minimum Curvature
<b>Design:</b>	OH	<b>Database:</b>	PEDM

Survey												
MD (usft)	Inc (°)	Azi (azimuth) (°)	TVD (usft)	N/S (usft)	E/W (usft)	DLeg (°/100usft)	Build (°/100usft)	Turn (°/100usft)	High to Plan (usft)	Right to Plan (usft)		
12,619.0	88.90	180.96	10,964.4	-1,670.9	-206.1	0.94	-0.94	-0.09	17.7	22.4		
12,713.0	88.90	180.52	10,966.2	-1,764.9	-207.3	0.47	0.00	-0.47	19.9	20.7		
12,807.0	89.96	180.69	10,967.1	-1,858.8	-208.3	1.14	1.13	0.18	21.1	19.2		
12,902.0	90.13	179.90	10,967.0	-1,953.8	-208.8	0.85	0.18	-0.83	21.2	18.1		
12,996.0	90.04	179.55	10,966.9	-2,047.8	-208.4	0.38	-0.10	-0.37	21.2	18.0		
13,090.0	90.31	182.01	10,966.6	-2,141.8	-209.6	2.63	0.29	2.62	21.0	16.2		
13,184.0	90.48	182.36	10,965.9	-2,235.7	-213.2	0.41	0.18	0.37	20.5	12.0		
13,278.0	90.22	182.10	10,965.4	-2,329.7	-216.9	0.39	-0.28	-0.28	20.0	7.8		
13,371.0	90.92	181.40	10,964.4	-2,422.6	-219.7	1.06	0.75	-0.75	19.2	4.5		
13,465.0	89.96	183.33	10,963.7	-2,516.5	-223.6	2.29	-1.02	2.05	18.6	0.0		
13,559.0	89.69	183.24	10,964.0	-2,610.4	-229.0	0.30	-0.29	-0.10	19.1	-5.9		
13,653.0	88.99	180.69	10,965.1	-2,704.3	-232.2	2.81	-0.74	-2.71	20.3	-9.7		
13,747.0	89.16	180.34	10,966.6	-2,798.3	-233.1	0.41	0.18	-0.37	21.9	-11.1		
13,841.0	89.16	180.08	10,968.0	-2,892.3	-233.4	0.28	0.00	-0.28	23.4	-11.9		
13,935.0	89.34	179.37	10,969.2	-2,986.3	-233.0	0.78	0.19	-0.76	24.8	-12.0		
14,029.0	89.69	178.85	10,970.0	-3,080.3	-231.5	0.67	0.37	-0.55	25.7	-11.1		
14,123.0	90.22	178.14	10,970.1	-3,174.2	-229.0	0.94	0.56	-0.76	25.9	-9.2		
14,217.0	89.52	177.26	10,970.3	-3,268.2	-225.2	1.20	-0.74	-0.94	26.2	-6.0		
14,312.0	88.99	176.47	10,971.5	-3,363.0	-220.1	1.00	-0.56	-0.83	27.6	-1.3		
14,406.0	90.75	178.67	10,971.7	-3,456.9	-216.1	3.00	1.87	2.34	27.9	2.1		
14,500.0	90.92	178.76	10,970.4	-3,550.9	-214.0	0.20	0.18	0.10	26.7	3.7		
14,594.0	90.48	177.79	10,969.2	-3,644.8	-211.1	1.13	-0.47	-1.03	25.7	5.9		
14,688.0	93.74	179.72	10,965.8	-3,738.7	-209.1	4.03	3.47	2.05	22.3	7.4		
14,782.0	94.18	180.69	10,959.3	-3,832.5	-209.4	1.13	0.47	1.03	15.9	6.6		
14,876.0	91.45	181.75	10,954.7	-3,926.3	-211.4	3.11	-2.90	1.13	11.5	4.0		
14,971.0	91.63	181.92	10,952.1	-4,021.3	-214.5	0.26	0.19	0.18	9.0	0.4		
15,065.0	88.90	181.83	10,951.7	-4,115.2	-217.5	2.91	-2.90	-0.10	8.6	-3.2		



Final PVA

<b>Company:</b>	Midland	<b>Local Co-ordinate Reference:</b>	Well #508H
<b>Project:</b>	Lea County, NM (NAD 83 NME)	<b>TVD Reference:</b>	KB = 32' @ 3528.0usft (Nabors M1206)
<b>Site:</b>	Merciless 13 Fed Com	<b>MD Reference:</b>	KB = 32' @ 3528.0usft (Nabors M1206)
<b>Well:</b>	#508H	<b>North Reference:</b>	Grid
<b>Wellbore:</b>	OH	<b>Survey Calculation Method:</b>	Minimum Curvature
<b>Design:</b>	OH	<b>Database:</b>	PEDM

Survey												
MD (usft)	Inc (°)	Azi (azimuth) (°)	TVD (usft)	N/S (usft)	E/W (usft)	DLeg (°/100usft)	Build (°/100usft)	Turn (°/100usft)	High to Plan (usft)	Right to Plan (usft)		
15,159.0	89.08	181.13	10,953.3	-4,209.2	-220.0	0.77	0.19	-0.74	10.1	-6.2		
15,253.0	89.43	180.60	10,954.6	-4,303.1	-221.4	0.68	0.37	-0.56	11.2	-8.2		
15,347.0	89.43	179.64	10,955.5	-4,397.1	-221.6	1.02	0.00	-1.02	11.9	-8.9		
15,442.0	89.78	179.37	10,956.1	-4,492.1	-220.8	0.47	0.37	-0.28	12.4	-8.6		
15,536.0	89.43	178.32	10,956.8	-4,586.1	-218.9	1.18	-0.37	-1.12	12.9	-7.3		
15,630.0	88.64	177.26	10,958.4	-4,680.0	-215.2	1.41	-0.84	-1.13	14.3	-4.2		
15,725.0	91.63	176.74	10,958.1	-4,774.9	-210.3	3.19	3.15	-0.55	13.9	0.2		
15,819.0	91.19	175.77	10,955.8	-4,868.6	-204.1	1.13	-0.47	-1.03	11.4	5.8		
15,913.0	91.80	175.15	10,953.4	-4,962.3	-196.7	0.93	0.65	-0.66	8.9	12.7		
16,006.0	91.89	178.85	10,950.4	-5,055.1	-191.8	3.98	0.10	3.98	5.7	17.0		
16,101.0	91.19	181.39	10,947.8	-5,150.1	-192.0	2.77	-0.74	2.67	2.9	16.3		
16,194.0	91.19	181.31	10,945.9	-5,243.0	-194.2	0.09	0.00	-0.09	0.8	13.5		
16,288.0	91.01	180.52	10,944.1	-5,337.0	-195.7	0.86	-0.19	-0.84	-1.1	11.5		
16,382.0	91.01	179.90	10,942.4	-5,431.0	-196.1	0.66	0.00	-0.66	-3.0	10.6		
16,476.0	91.54	179.81	10,940.4	-5,525.0	-195.8	0.57	0.56	-0.10	-5.2	10.3		
16,571.0	87.93	181.75	10,940.8	-5,619.9	-197.1	4.31	-3.80	2.04	-4.9	8.4		
16,666.0	87.85	181.13	10,944.3	-5,714.8	-199.5	0.66	-0.08	-0.65	-1.6	5.5		
16,761.0	87.76	181.04	10,947.9	-5,809.8	-201.3	0.13	-0.09	-0.09	1.7	3.1		
16,855.0	88.81	181.04	10,950.7	-5,903.7	-203.0	1.12	1.12	0.00	4.0	0.9		
16,950.0	88.81	180.25	10,952.7	-5,998.7	-204.1	0.83	0.00	-0.83	5.4	-0.7		
17,045.0	91.80	180.69	10,952.2	-6,093.7	-204.9	3.18	3.15	0.46	4.3	-2.1		
17,139.0	92.33	180.78	10,948.8	-6,187.6	-206.1	0.57	0.56	0.10	0.4	-3.8		
17,234.0	90.84	179.37	10,946.2	-6,282.5	-206.2	2.16	-1.57	-1.48	-2.8	-4.5		
17,328.0	91.01	178.93	10,944.7	-6,376.5	-204.8	0.50	0.18	-0.47	-4.9	-3.6		
17,421.0	91.10	178.32	10,943.0	-6,469.5	-202.6	0.66	0.10	-0.66	-7.1	-2.0		
17,515.0	88.37	179.55	10,943.4	-6,563.4	-200.8	3.19	-2.90	1.31	-7.3	-0.7		
17,609.0	88.72	178.93	10,945.8	-6,657.4	-199.6	0.76	0.37	-0.66	-5.4	0.0		



Final PVA

<b>Company:</b>	Midland	<b>Local Co-ordinate Reference:</b>	Well #508H
<b>Project:</b>	Lea County, NM (NAD 83 NME)	<b>TVD Reference:</b>	KB = 32' @ 3528.0usft (Nabors M1206)
<b>Site:</b>	Merciless 13 Fed Com	<b>MD Reference:</b>	KB = 32' @ 3528.0usft (Nabors M1206)
<b>Well:</b>	#508H	<b>North Reference:</b>	Grid
<b>Wellbore:</b>	OH	<b>Survey Calculation Method:</b>	Minimum Curvature
<b>Design:</b>	OH	<b>Database:</b>	PEDM

MD (usft)	Inc (°)	Azi (azimuth) (°)	TVD (usft)	N/S (usft)	E/W (usft)	DLeg (°/100usft)	Build (°/100usft)	Turn (°/100usft)	High to Plan (usft)	Right to Plan (usft)
17,703.0	88.55	178.58	10,948.0	-6,751.4	-197.5	0.41	-0.18	-0.37	-3.8	1.5
17,797.0	88.46	178.49	10,950.5	-6,845.3	-195.1	0.14	-0.10	-0.10	-1.9	3.3
17,891.0	88.72	177.79	10,952.8	-6,939.2	-192.1	0.79	0.28	-0.74	-0.1	5.8
17,986.0	88.81	177.62	10,954.8	-7,034.1	-188.3	0.20	0.09	-0.18	1.4	9.1
18,080.0	88.99	180.43	10,956.6	-7,128.1	-186.7	2.99	0.19	2.99	2.6	10.1
18,174.0	88.90	179.90	10,958.4	-7,222.1	-186.9	0.57	-0.10	-0.56	3.8	9.3
18,269.0	88.55	179.11	10,960.5	-7,317.0	-186.1	0.91	-0.37	-0.83	5.4	9.6
18,362.0	89.25	179.11	10,962.3	-7,410.0	-184.7	0.75	0.75	0.00	6.6	10.5
<b>Final MWD Survey (MD=18362.0')</b>										
18,416.0	89.25	179.11	10,963.0	-7,464.0	-183.8	0.00	0.00	0.00	7.0	11.0
<b>Final Projection to Bit (MD=18416.0')</b>										

Measured Depth (usft)	Vertical Depth (usft)	Local Coordinates		Comment
		+N/-S (usft)	+E/-W (usft)	
10,354.0	10,337.8	286.1	-153.1	KOP (MD=10354.0')
10,538.0	10,516.6	247.8	-156.3	HL Crossing, MD:10538.0', TVD:10516.6', N/S:247.8', E/W:-156.3', INC:22.86
18,362.0	10,962.3	-7,410.0	-184.7	Final MWD Survey (MD=18362.0')
18,416.0	10,963.0	-7,464.0	-183.8	Final Projection to Bit (MD=18416.0')

Checked By: \_\_\_\_\_ Approved By: \_\_\_\_\_ Date: \_\_\_\_\_

Intent  As Drilled

API #									
Operator Name:					Property Name:				Well Number

Kick Off Point (KOP)

UL	Section	Township	Range	Lot	Feet	From N/S	Feet	From E/W	County
Latitude					Longitude				NAD

First Take Point (FTP)

UL	Section	Township	Range	Lot	Feet	From N/S	Feet	From E/W	County
Latitude					Longitude				NAD

Last Take Point (LTP)

UL	Section	Township	Range	Lot	Feet	From N/S	Feet	From E/W	County
Latitude					Longitude				NAD

Is this well the defining well for the Horizontal Spacing Unit?

Is this well an infill well?

If infill is yes please provide API if available, Operator Name and well number for Defining well for Horizontal Spacing Unit.

API #									
Operator Name:					Property Name:				Well Number

KZ 06/29/2018

Submit To Appropriate District Office Two Copies District I 1625 N. French Dr., Hobbs, NM 88240 District II 811 S. First St., Artesia, NM 88210 District III 1000 Rio Brazos Rd., Aztec, NM 87410 District IV 1220 S. St. Francis Dr., Santa Fe, NM 87505		State of New Mexico Energy, Minerals and Natural Resources  Oil Conservation Division 1220 South St. Francis Dr. Santa Fe, NM 87505				Form C-105 Revised August 1, 2011				
		1. WELL API NO.		30-025-47447		2. Type of Lease		<input type="checkbox"/> STATE <input type="checkbox"/> FEE <input checked="" type="checkbox"/> FED/INDIAN		
		3. State Oil & Gas Lease No.		NMNM110835		4. Reason for filing:				
		<input checked="" type="checkbox"/> <b>COMPLETION REPORT</b> (Fill in boxes #1 through #31 for State and Fee wells only)		<input type="checkbox"/> <b>C-144 CLOSURE ATTACHMENT</b> (Fill in boxes #1 through #9, #15 Date Rig Released and #32 and/or #33; attach this and the plat to the C-144 closure report in accordance with 19.15.17.13.K NMAC)		5. Lease Name or Unit Agreement Name		MERCILESS 13 FED COM		
		6. Well Number:		508H		7. Type of Completion:				
		<input checked="" type="checkbox"/> NEW WELL <input type="checkbox"/> WORKOVER <input type="checkbox"/> DEEPENING <input type="checkbox"/> PLUGBACK <input type="checkbox"/> DIFFERENT RESERVOIR <input type="checkbox"/> OTHER				8. Name of Operator				
		EOG RESOURCES INC				9. OGRID		7377		
		10. Address of Operator		PO BOX 2267 MIDLAND, TEXAS 79702		11. Pool name or Wildcat		WC-025 G-08 S253235G; LOWER BONE SPRINGS		
12. Location	Unit Ltr	Section	Township	Range	Lot	Feet from the	N/S Line	Feet from the	E/W Line	County
<b>Surface:</b>	B	13	25S	32E		349'	NORTH	2317'	EAST	LEA
<b>BH:</b>	G	24	25S	32E		2533'	NORTH	2545'	EAST	LEA
13. Date Spudded	14. Date T.D. Reached	15. Date Rig Released		16. Date Completed (Ready to Produce)		17. Elevations (DF and RKB, RT, GR, etc.)		3496'GL		
5/7/2022	7/3/2022	7/8/2022		8/30/2022						
18. Total Measured Depth of Well		19. Plug Back Measured Depth		20. Was Directional Survey Made?		21. Type Electric and Other Logs Run		None		
MD 18,416'		TVD 10,963'		MD 18,378'    TVD 10,963'		YES				
22. Producing Interval(s), of this completion - Top, Bottom, Name		LOWER BONESPRING - 10,907'-18,378'								
<b>23. CASING RECORD (Report all strings set in well)</b>										
CASING SIZE		WEIGHT LB./FT.		DEPTH SET		HOLE SIZE		CEMENTING RECORD		AMOUNT PULLED
13 3/8"		54.4# J-55		1,080'		17 1/2"		1125 CL C/CIRC		
9 5/8"		40# J-55		4,809'		12 1/4"		1685 CL C/CIRC		
5 1/2"		20# HCP 110		18,386'		8 3/4"		2720 CL C CIRC		
<b>24. LINER RECORD</b>										
SIZE	TOP	BOTTOM	SACKS CEMENT	SCREEN	<b>25. TUBING RECORD</b>					
					SIZE	DEPTH SET	PACKER SET			
26. Perforation record (interval, size, and number)					27. ACID, SHOT, FRACTURE, CEMENT, SQUEEZE, ETC.					
10,907'-18,378'    3 1/8", 1554 holes					DEPTH INTERVAL		AMOUNT AND KIND MATERIAL USED			
					10,907'-18,378'		FRAC W/20,347,380 lbs proppant, 295,005 bbls load fld			
<b>28. PRODUCTION</b>										
Date First Production		Production Method ( <i>Flowing, gas lift, pumping - Size and type pump</i> )				Well Status ( <i>Prod. or Shut-in</i> )				
8/30/2022		Flowing				Producing				
Date of Test	Hours Tested	Choke Size	Prod'n For Test Period	Oil - Bbl	Gas - MCF	Water - Bbl.	Gas - Oil Ratio			
9/10/2022	24	128		3762	6526	7305	1735			
Flow Tubing Press.	Casing Pressure	Calculated 24-Hour Rate	Oil - Bbl.	Gas - MCF	Water - Bbl.	Oil Gravity - API - ( <i>Corr.</i> )				
	628					45.7				
29. Disposition of Gas ( <i>Sold, used for fuel, vented, etc.</i> )						30. Test Witnessed By				
SOLD										
31. List Attachments										
C-102, C-104, C-103, Directional Survey, H spacing,										
32. If a temporary pit was used at the well, attach a plat with the location of the temporary pit.										
33. If an on-site burial was used at the well, report the exact location of the on-site burial:										
Latitude			Longitude			NAD 1927 1983				
I hereby certify that the information shown on both sides of this form is true and complete to the best of my knowledge and belief										
Signature		Printed Name		Title		Date				
Kristina Agee		Kristina Agee		REGULATORY SPECIALIST		10/25/2022				
E-mail Address		kristina_agee@eogresources.com								

# INSTRUCTIONS

This form is to be filed with the appropriate District Office of the Division not later than 20 days after the completion of any newly-drilled or deepened well and not later than 60 days after completion of closure. When submitted as a completion report, this shall be accompanied by one copy of all electrical and radio-activity logs run on the well and a summary of all special tests conducted, including drill stem tests. All depths reported shall be measured depths. In the case of directionally drilled wells, true vertical depths shall also be reported. For multiple completions, items 11, 12 and 26-31 shall be reported for each zone.

## INDICATE FORMATION TOPS IN CONFORMANCE WITH GEOGRAPHICAL SECTION OF STATE

Southeastern New Mexico		Northwestern New Mexico	
T. Anhy <u>Rustler 947'</u>	T. Canyon <u>Brushy 7,258'</u>	T. Ojo Alamo	T. Penn A"
T. Salt <u>1,253'</u>	T. Strawn	T. Kirtland	T. Penn. "B"
B. Salt <u>4,674'</u>	T. Atoka	T. Fruitland	T. Penn. "C"
T. Yates	T. Miss	T. Pictured Cliffs	T. Penn. "D"
T. 7 Rivers	T. Devonian	T. Cliff House	T. Leadville
T. Queen	T. Silurian	T. Menefee	T. Madison
T. Grayburg	T. Montoya	T. Point Lookout	T. Elbert
T. San Andres	T. Simpson	T. Mancos	T. McCracken
T. Glorieta	T. McKee	T. Gallup	T. Ignacio Otzte
T. Paddock	T. Ellenburger	Base Greenhorn	T. Granite
T. Blinebry	T. Gr. Wash	T. Dakota	
T. Tubb	T. Delaware Sand	T. Morrison	
T. Drinkard	T. Bone Springs	T. Todilto	
T. Abo	T. <u>1st BS Sand 10,007'</u>	T. Entrada	
T. Wolfcamp	T. <u>2nd BS Sand 10,522'</u>	T. Wingate	
T. Penn	T.	T. Chinle	
T. Cisco (Bough C)	T.	T. Permian	

### OIL OR GAS SANDS OR ZONES

No. 1, from.....to.....  
 No. 2, from.....to.....  
 No. 3, from.....to.....  
 No. 4, from.....to.....

### IMPORTANT WATER SANDS

Include data on rate of water inflow and elevation to which water rose in hole.

No. 1, from.....to.....feet.....  
 No. 2, from.....to.....feet.....  
 No. 3, from.....to.....feet.....

## LITHOLOGY RECORD (Attach additional sheet if necessary)

From	To	Thickness In Feet	Lithology	From	To	Thickness In Feet	Lithology

U.S. Department of the Interior  
BUREAU OF LAND MANAGEMENT

<b>Well Name:</b> MERCILESS 13 FED COM	<b>Well Location:</b> T25S / R32E / SEC 13 / NENE / 32.1369966 / -103.6217614	<b>County or Parish/State:</b> LEA / NM
<b>Well Number:</b> 508H	<b>Type of Well:</b> OIL WELL	<b>Allottee or Tribe Name:</b>
<b>Lease Number:</b> NMNM110835	<b>Unit or CA Name:</b>	<b>Unit or CA Number:</b>
<b>US Well Number:</b> 3002547447	<b>Well Status:</b> Drilling Well	<b>Operator:</b> EOG RESOURCES INCORPORATED

**Subsequent Report**

**Sundry ID:** 2674018

**Type of Submission:** Subsequent Report

**Type of Action:** Drilling Operations

**Date Sundry Submitted:** 05/31/2022

**Time Sundry Submitted:** 08:58

**Date Operation Actually Began:** 05/07/2022

**Actual Procedure:** 5-7-2022 20" Conductor @ 120' 5-29-2022 17 1/2" HOLE 5-29-2022 Surface Hole @ 1,095' MD, 1,095' TVD Casing shoe @ 1,080' MD, 1,080' TVD 13-3/8" 54.5# J-55 BTC Cement w/ 885 sx Class C (1.65 yld, 13.8 ppg), followed by 240 sx Class C (1.36 yld, 14.8 ppg) Test casing to 1,500 psi for 30 min, Circ (160 bbls) 544 sx cement to surface BOP/DIVERTERS/ROTATING HEAD-FULL TEST BOPE. CHOKE MANIFOLD, PIPE RAMS, BLIND RAMS, FLOOR VALVES - 250 PSI LOW / 10,000 PSI HIGH. STANDPIPE, IBOP AND MUD LINE BACK TO PUMPS - 250 PSI LOW / 7000 PSI HIGH. ANNULAR - 250 PSI LOW / 5000 PSI HIGH. 10 MIN HOLD EACH TEST.

**Well Name:** MERCILESS 13 FED COM      **Well Location:** T25S / R32E / SEC 13 / NENE / 32.1369966 / -103.6217614      **County or Parish/State:** LEA / NM

**Well Number:** 508H      **Type of Well:** OIL WELL      **Allottee or Tribe Name:**

**Lease Number:** NMNM110835      **Unit or CA Name:**      **Unit or CA Number:**

**US Well Number:** 3002547447      **Well Status:** Drilling Well      **Operator:** EOG RESOURCES INCORPORATED

**Operator**

*I certify that the foregoing is true and correct. Title 18 U.S.C. Section 1001 and Title 43 U.S.C. Section 1212, make it a crime for any person knowingly and willfully to make to any department or agency of the United States any false, fictitious or fraudulent statements or representations as to any matter within its jurisdiction. Electronic submission of Sundry Notices through this system satisfies regulations requiring a*

**Operator Electronic Signature:** EMILY FOLLIS

**Signed on:** MAY 31, 2022 08:58 AM

**Name:** EOG RESOURCES INCORPORATED

**Title:** Sr. Regulatory Administrator

**Street Address:** 5509 Champions Drive

**City:** Midland      **State:** TX

**Phone:** (432) 848-9163

**Email address:** emily\_follis@eogresources.com

**Field**

**Representative Name:**

**Street Address:**

**City:**      **State:**      **Zip:**

**Phone:**

**Email address:**

**BLM Point of Contact**

**BLM POC Name:** Jonathon W Shepard

**BLM POC Title:** Petroleum Engineer

**BLM POC Phone:** 5752345972

**BLM POC Email Address:** jshepard@blm.gov

**Disposition:** Accepted

**Disposition Date:** 06/22/2022

**Signature:** Jonathon Shepard

U.S. Department of the Interior  
BUREAU OF LAND MANAGEMENT

<b>Well Name:</b> MERCILESS 13 FED COM	<b>Well Location:</b> T25S / R32E / SEC 13 / NENE / 32.1369966 / -103.6217614	<b>County or Parish/State:</b> LEA / NM
<b>Well Number:</b> 508H	<b>Type of Well:</b> OIL WELL	<b>Allottee or Tribe Name:</b>
<b>Lease Number:</b> NMNM110835	<b>Unit or CA Name:</b>	<b>Unit or CA Number:</b>
<b>US Well Number:</b> 3002547447	<b>Well Status:</b> Drilling Well	<b>Operator:</b> EOG RESOURCES INCORPORATED

**Subsequent Report**

**Sundry ID:** 2680435

**Type of Submission:** Subsequent Report

**Type of Action:** Drilling Operations

**Date Sundry Submitted:** 07/05/2022

**Time Sundry Submitted:** 01:55

**Date Operation Actually Began:** 06/01/2022

**Actual Procedure:** 6-1-2022 12 1/4' HOLE 6-1-2022 Intermediate Hole @ 4,825' MD, 4,817' TVD Casing shoe @ 4,809' MD, 4,800' TVD Ran 9-5/8", 40#, J55, LTC (0' - 3,758'), 9-5/8", 40#, SEAH-80, LTC (3,758' - 4,809') Cement w/ 1,330 sx Class C (2.01 yld, 12.9 ppg), followed by 355 sx Class C (1.33 yld, 14.8 ppg) Test casing to 2,100 psi for 30 min, Circ (260 bbls) 726 sx cement to surface

<b>Well Name:</b> MERCILESS 13 FED COM	<b>Well Location:</b> T25S / R32E / SEC 13 / NENE / 32.1369966 / -103.6217614	<b>County or Parish/State:</b> LEA / NM
<b>Well Number:</b> 508H	<b>Type of Well:</b> OIL WELL	<b>Allottee or Tribe Name:</b>
<b>Lease Number:</b> NMNM110835	<b>Unit or CA Name:</b>	<b>Unit or CA Number:</b>
<b>US Well Number:</b> 3002547447	<b>Well Status:</b> Drilling Well	<b>Operator:</b> EOG RESOURCES INCORPORATED

**Operator**

I certify that the foregoing is true and correct. Title 18 U.S.C. Section 1001 and Title 43 U.S.C. Section 1212, make it a crime for any person knowingly and willfully to make to any department or agency of the United States any false, fictitious or fraudulent statements or representations as to any matter within its jurisdiction. Electronic submission of Sundry Notices through this system satisfies regulations requiring a

**Operator Electronic Signature:** EMILY FOLLIS

**Signed on:** JUL 05, 2022 01:55 PM

**Name:** EOG RESOURCES INCORPORATED

**Title:** Sr. Regulatory Administrator

**Street Address:** 5509 Champions Drive

**City:** Midland **State:** TX

**Phone:** (432) 848-9163

**Email address:** emily\_follis@eogresources.com

**Field**

**Representative Name:**

**Street Address:**

**City:** **State:** **Zip:**

**Phone:**

**Email address:**

**BLM Point of Contact**

**BLM POC Name:** Jonathon W Shepard

**BLM POC Title:** Petroleum Engineer

**BLM POC Phone:** 5752345972

**BLM POC Email Address:** jshepard@blm.gov

**Disposition:** Accepted

**Disposition Date:** 08/05/2022

**Signature:** Jonathon Shepard

U.S. Department of the Interior  
BUREAU OF LAND MANAGEMENT

<b>Well Name:</b> MERCILESS 13 FED COM	<b>Well Location:</b> T25S / R32E / SEC 13 / NENE / 32.1369966 / -103.6217614	<b>County or Parish/State:</b> LEA / NM
<b>Well Number:</b> 508H	<b>Type of Well:</b> OIL WELL	<b>Allottee or Tribe Name:</b>
<b>Lease Number:</b> NMNM110835	<b>Unit or CA Name:</b>	<b>Unit or CA Number:</b>
<b>US Well Number:</b> 3002547447	<b>Well Status:</b> Drilling Well	<b>Operator:</b> EOG RESOURCES INCORPORATED

**Subsequent Report**

**Sundry ID:** 2682249

**Type of Submission:** Subsequent Report

**Type of Action:** Drilling Operations

**Date Sundry Submitted:** 07/15/2022

**Time Sundry Submitted:** 09:42

**Date Operation Actually Began:** 07/07/2022

**Actual Procedure:** 7-7-2022 8 3/4" hole 7-7-2022 Production Hole @ 18,416' MD, 10,963' TVD Casing Shoe @ 18,386' MD, 10,962' TVD Ran 5-1/2", 20#, EY HCP-110, RDT-BTX (MJ @ 300', 10,046' and 17,914') Cement w/ 640 sx Class C (3.18 yld, 11.0 ppg), followed by 2,080 sx Class C (1.28 yld, 14.5 ppg, No casing test . Did not circ cement to surface, TOC @ 4,030' - RCBL RR 7-8-2022

<b>Well Name:</b> MERCILESS 13 FED COM	<b>Well Location:</b> T25S / R32E / SEC 13 / NENE / 32.1369966 / -103.6217614	<b>County or Parish/State:</b> LEA / NM
<b>Well Number:</b> 508H	<b>Type of Well:</b> OIL WELL	<b>Allottee or Tribe Name:</b>
<b>Lease Number:</b> NMNM110835	<b>Unit or CA Name:</b>	<b>Unit or CA Number:</b>
<b>US Well Number:</b> 3002547447	<b>Well Status:</b> Drilling Well	<b>Operator:</b> EOG RESOURCES INCORPORATED

**Operator**

I certify that the foregoing is true and correct. Title 18 U.S.C. Section 1001 and Title 43 U.S.C. Section 1212, make it a crime for any person knowingly and willfully to make to any department or agency of the United States any false, fictitious or fraudulent statements or representations as to any matter within its jurisdiction. Electronic submission of Sundry Notices through this system satisfies regulations requiring a

**Operator Electronic Signature:** EMILY FOLLIS

**Signed on:** JUL 15, 2022 09:42 AM

**Name:** EOG RESOURCES INCORPORATED

**Title:** Sr. Regulatory Administrator

**Street Address:** 5509 Champions Drive

**City:** Midland **State:** TX

**Phone:** (432) 848-9163

**Email address:** emily\_follis@eogresources.com

**Field**

**Representative Name:**

**Street Address:**

**City:** **State:** **Zip:**

**Phone:**

**Email address:**

**BLM Point of Contact**

**BLM POC Name:** Jonathon W Shepard

**BLM POC Title:** Petroleum Engineer

**BLM POC Phone:** 5752345972

**BLM POC Email Address:** jshepard@blm.gov

**Disposition:** Accepted

**Disposition Date:** 08/10/2022

**Signature:** Jonathon Shepard

Sante Fe Main Office  
Phone: (505) 476-3441

General Information  
Phone: (505) 629-6116

Online Phone Directory  
<https://www.emnrd.nm.gov/ocd/contact-us>

**State of New Mexico**  
**Energy, Minerals and Natural Resources**  
**Oil Conservation Division**  
**1220 S. St Francis Dr.**  
**Santa Fe, NM 87505**

ACKNOWLEDGMENTS

Action 153578

**ACKNOWLEDGMENTS**

Operator: EOG RESOURCES INC 5509 Champions Drive Midland, TX 79706	OGRID: 7377
	Action Number: 153578
	Action Type: [C-104] Completion Packet (C-104C)

**ACKNOWLEDGMENTS**

<input checked="" type="checkbox"/>	I hereby certify that the required Water Use Report has been, or will be, submitted for this wells completion.
<input checked="" type="checkbox"/>	I hereby certify that the required FracFocus disclosure has been, or will be, submitted for this wells completion.

Sante Fe Main Office  
Phone: (505) 476-3441

General Information  
Phone: (505) 629-6116

Online Phone Directory  
<https://www.emnrd.nm.gov/ocd/contact-us>

**State of New Mexico**  
**Energy, Minerals and Natural Resources**  
**Oil Conservation Division**  
**1220 S. St Francis Dr.**  
**Santa Fe, NM 87505**

CONDITIONS

Action 153578

**CONDITIONS**

Operator: EOG RESOURCES INC 5509 Champions Drive Midland, TX 79706	OGRID: 7377
	Action Number: 153578
	Action Type: [C-104] Completion Packet (C-104C)

**CONDITIONS**

Created By	Condition	Condition Date
plmartinez	File 3160-4 Completion Report within 10 days of BLM approval.	3/25/2026