

District I1625 N. French Dr., Hobbs, NM 88240  
Phone:(505) 393-6161 Fax:(505) 393-0720District II1301 W. Grand Ave., Artesia, NM 88210  
Phone:(505) 748-1283 Fax:(505) 748-9720District III1000 Rio Brazos Rd., Aztec, NM 87410  
Phone:(505) 334-6178 Fax:(505) 334-6170District IV1220 S. St Francis Dr., Santa Fe, NM 87505  
Phone:(505) 476-3470 Fax:(505) 476-3462

**State of New Mexico**  
**Energy, Minerals and Natural Resources**  
**Oil Conservation Division**  
**1220 S. St Francis Dr.**  
**Santa Fe, NM 87505**

**WELL LOCATION AND ACREAGE DEDICATION PLAT**

1. API Number 30-021-20509	2. Pool Code 96387	3. Pool Name WEST BRAVO DOME CO2 GAS
4. Property Code 37587	5. Property Name STATE	6. Well No. 162
7. OGRID No. 495	8. Operator Name HESS CORPORATION	9. Elevation 4372

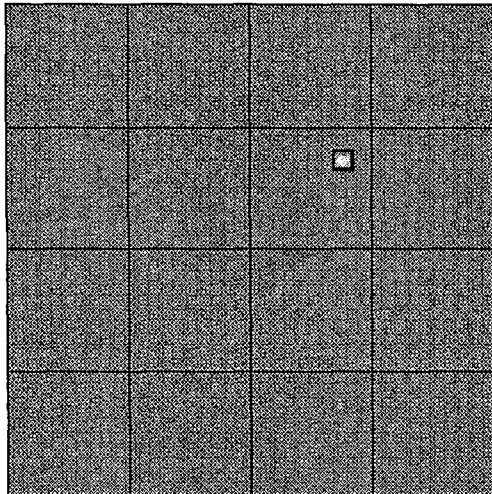
**10. Surface Location**

UL - Lot G	Section 16	Township 18N	Range 30E	Lot Idn G	Feet From 1650	N/S Line N	Feet From 1650	E/W Line E	County HARDING
---------------	---------------	-----------------	--------------	--------------	-------------------	---------------	-------------------	---------------	-------------------

**11. Bottom Hole Location If Different From Surface**

UL - Lot	Section	Township	Range	Lot Idn	Feet From	N/S Line	Feet From	E/W Line	County
12. Dedicated Acres 640.00	13. Joint or Infill	14. Consolidation Code Communitization	15. Order No.						

**NO ALLOWABLE WILL BE ASSIGNED TO THIS COMPLETION UNTIL ALL INTERESTS HAVE BEEN CONSOLIDATED OR A NON-STANDARD UNIT HAS BEEN APPROVED BY THE DIVISION**

**OPERATOR CERTIFICATION**

*I hereby certify that the information contained herein is true and complete to the best of my knowledge and belief, and that this organization either owns a working interest or unleased mineral interest in the land including the proposed bottom hole location(s) or has a right to drill this well at this location pursuant to a contract with an owner of such a mineral or working interest, or to a voluntary pooling agreement or a compulsory pooling order heretofore entered by the division.*

E-Signed By: Rita Smith

Title: Engineering Tech

Date: 12/18/2009

**SURVEYOR CERTIFICATION**

*I hereby certify that the well location shown on this plat was plotted from field notes of actual surveys made by me or under my supervision, and that the same is true and correct to the best of my belief.*

Surveyed By: GARY JONES

Date of Survey: 11/1/2009

Certificate Number: 7977

DISTRICT I  
1625 N. French Dr., Hobbs, NM 88240

DISTRICT II  
1301 W. Grand Avenue, Artesia, NM 88210

DISTRICT III  
1000 Rio Brazos Rd., Aztec, NM 87410

DISTRICT IV  
1220 S. St. Francis Dr., Santa Fe, NM 87505

State of New Mexico  
Energy, Minerals and Natural Resources Department

Form C-102  
Revised October 15, 2009

Submit one copy to appropriate  
District Office

**OIL CONSERVATION DIVISION**  
1220 South St. Francis Dr.  
Santa Fe, New Mexico 87505

**WELL LOCATION AND ACREAGE DEDICATION PLAT**

☐ AMENDED REPORT

API Number	Pool Code 96387	Pool Name West Bravo Dome CO2 Gas
Property Code 16752	Property Name STATE <del>1830</del>	Well Number 162G
OGRID No. 495	Operator Name HESS CORPORATION	Elevation 4372'

**Surface Location**

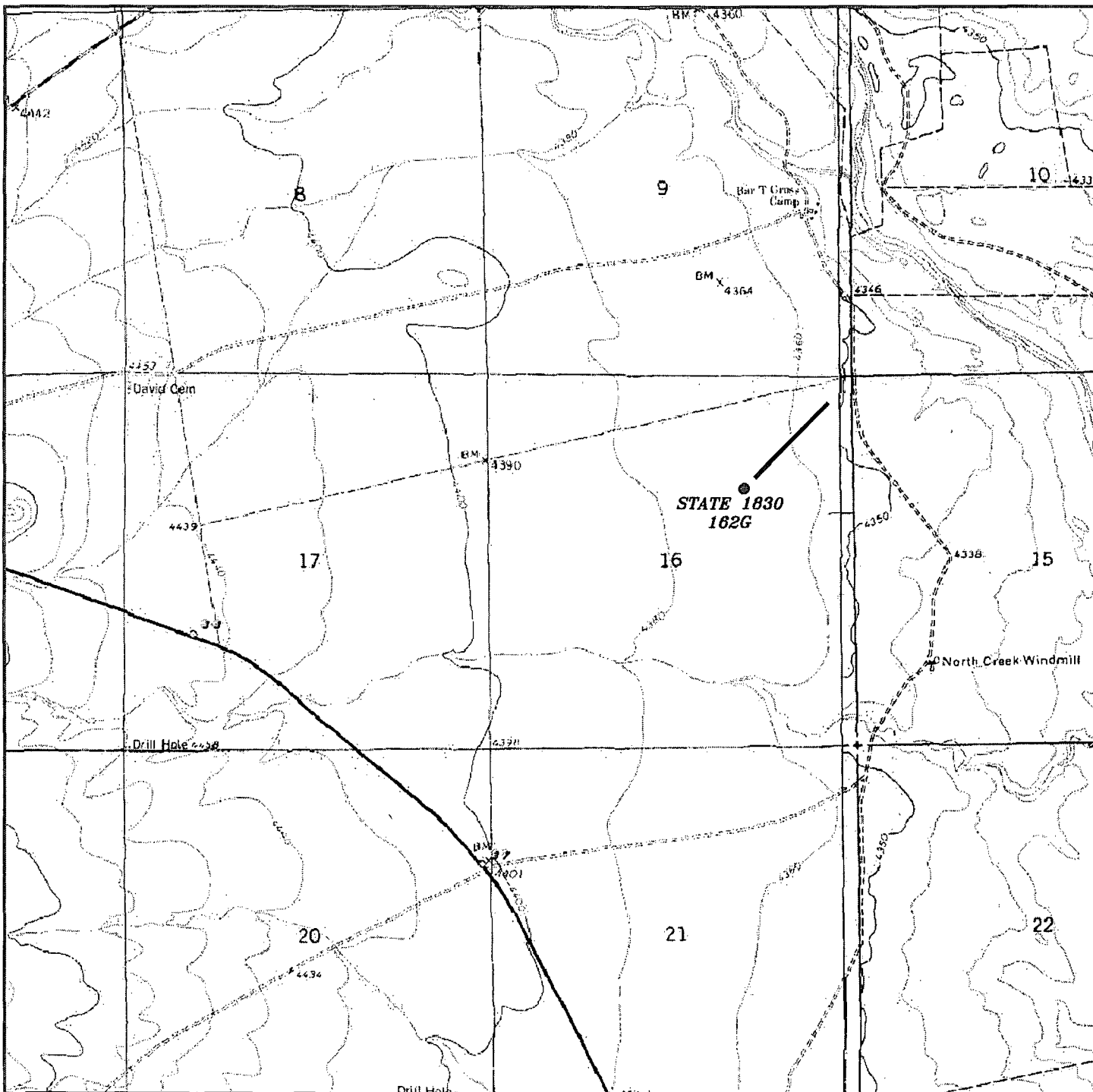
UL or lot No. G	Section 16	Township 18 N	Range 30 E	Lot Idn G	Feet from the 1650	North/South line NORTH	Feet from the 1650	East/West line EAST	County HARDING
--------------------	---------------	------------------	---------------	--------------	-----------------------	---------------------------	-----------------------	------------------------	-------------------

**Bottom Hole Location If Different From Surface**

UL or lot No.	Section	Township	Range	Lot Idn	Feet from the	North/South line	Feet from the	East/West line	County
Dedicated Acres 640	Joint or Infill N	Consolidation Code C	Order No.						

NO ALLOWABLE WILL BE ASSIGNED TO THIS COMPLETION UNTIL ALL INTERESTS HAVE BEEN CONSOLIDATED  
OR A NON-STANDARD UNIT HAS BEEN APPROVED BY THE DIVISION

	<p><b>OPERATOR CERTIFICATION</b></p> <p>I hereby certify that the information contained herein is true and complete to the best of my knowledge and belief, and that this organization either owns a working interest or unleased mineral interest in the land including the proposed bottom hole location or has a right to drill this well at this location pursuant to a contract with an owner of such a mineral or working interest, or to a voluntary pooling agreement or a compulsory pooling order heretofore entered by the division.</p> <p>Rita C. Smith Signature</p> <p>12/17/2009 Date</p> <p>RITA C. SMITH Printed Name</p>
	<p><b>SURVEYOR CERTIFICATION</b></p> <p>I hereby certify that the well location shown on this plat was plotted from field notes of actual surveys made by me or under my supervision, and that the same is true and correct to the best of my belief.</p> <p>NOVEMBER 10, 2009 Date Surveyed</p> <p>Signature of Professional Surveyor</p> <p>Certificate No. Gary L. Jones 7977</p> <p>BASIN SURVEYS</p>
	<p><b>NEW MEXICO</b></p> <p>Professional Surveyor</p> <p>7977</p>
	<p>Professional Surveyor</p>



**STATE 1830 162G**

Located 1650' FNL and 1650' FEL

Section 16, Township 18 North, Range 30 East,  
N.M.P.M., Harding County, New Mexico.

**basin**  
**surveys**

focused on excellence  
in the oilfield

P.O. Box 1786  
1120 N. West County Rd.  
Hobbs, New Mexico 88241  
(575) 393-7316 - Office  
(575) 392-2206 - Fax  
basinsurveys.com

W.O. Number: JMS 21827

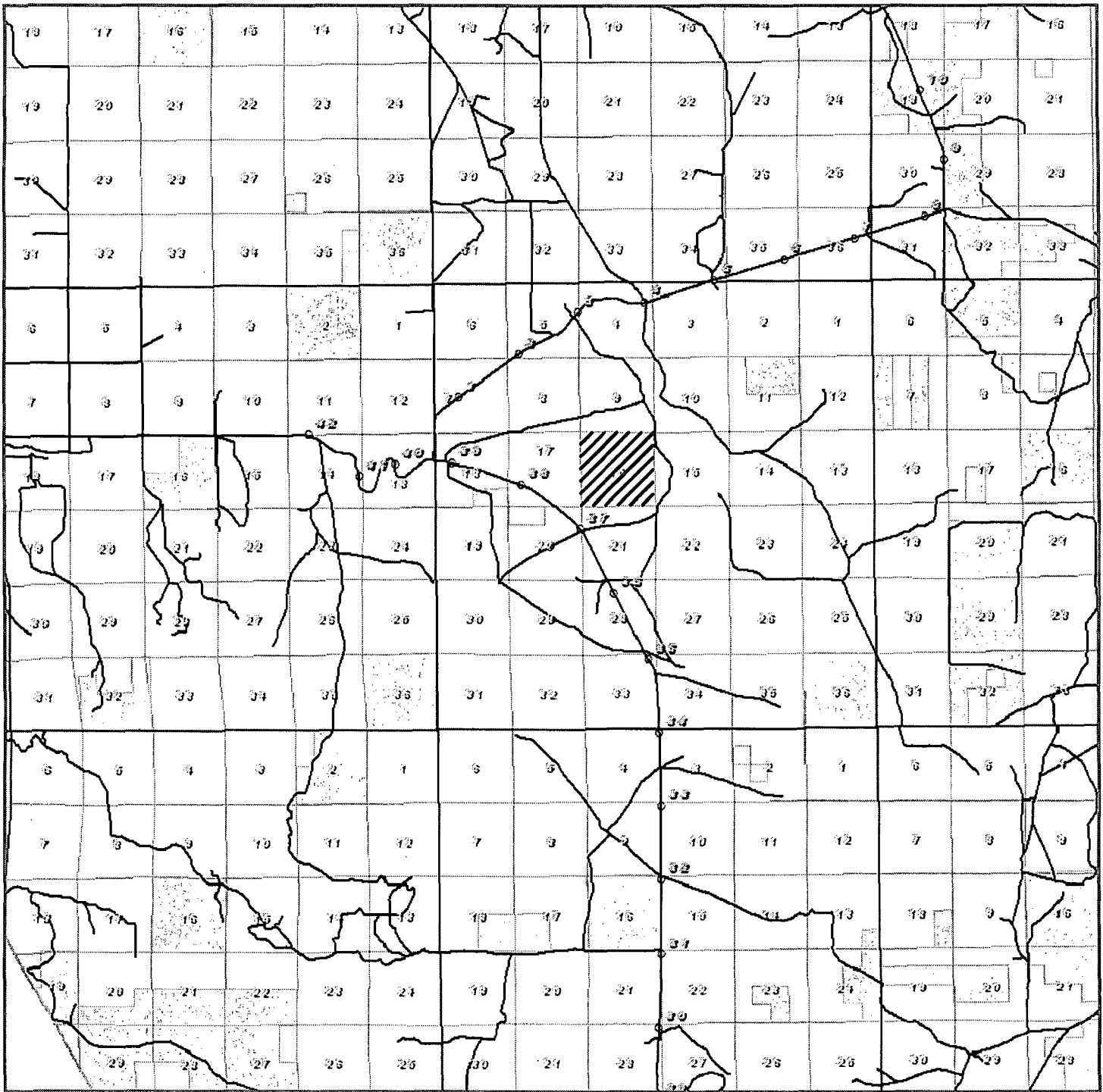
Survey Date: 11-01-2009

Scale: 1" = 2000'

Date: 11-09-2009



**HESS**  
**CORPORATION**



STATE 1830 162G  
 Located 1650' FNL and 1650' FEL  
 Section 16, Township 18 North, Range 30 East,  
 N.M.P.M., Harding County, New Mexico.

**basin**  
**surveys**  
 focused on excellence  
 in the oilfield

P.O. Box 1786  
 1120 N. West County Rd.  
 Hobbs, New Mexico 88241  
 (575) 393-7316 - Office  
 (575) 392-2206 - Fax  
 basin-surveys.com

W.O. Number: JMS 21827

Survey Date: 11-01-2009

Scale: 1" = 2 Miles

Date: 11-09-2009



**HESS**  
**CORPORATION**



STATE 1830 162G  
Located 1650' FNL and 1650' FEL  
Section 16, Township 18 North, Range 30 East,  
N.M.P.M., Harding County, New Mexico.

**basin**  
**surveys**  
focused on excellence  
in the oilfield

P.O. Box 1786  
1120 N. West County Rd.  
Hobbs, New Mexico 88241  
(575) 393-7316 - Office  
(575) 392-2206 - Fax  
basinsurveys.com

W.O. Number: JMS 21827

Scale: 1" = 2000'

YELLOW TINT - USA LAND  
BLUE TINT - STATE LAND  
NATURAL COLOR - FEE LAND



**HESS**  
**CORPORATION**