

DISTRICT I
1625 N. French Dr., Hobbs, NM 88240

State of New Mexico

Form C-102

DISTRICT II
1301 W. Grand Avenue, Artesia, NM 88210

Energy, Minerals, and Natural Resources Department

Revised October 12, 2005

DISTRICT III
1000 Rio Brazos Rd., Aztec, NM 87410

OIL CONSERVATION DIVISION

1220 South St. Francis Dr.

Submit to Appropriate District Office

State Lease - 4 copies

Fee Lease - 3 copies

DISTRICT IV
1220 S. St. Francis Dr., Santa Fe, NM 87505

Santa Fe, New Mexico 87505

☐ AMENDED REPORT

WELL LOCATION AND ACREAGE DEDICATION PLAT

¹ API Number 30-021-20651	² Pool Code 98104	³ Pool Name Wildcat; Tubb CO2 GAS POOL
⁴ Property Code 313466	⁵ Property Name EBELL 2027 25	⁶ Well Number #1
⁷ GRID No. 25078	⁸ Operator Name WHITING OIL & GAS CORPORATION	⁹ Elevation 5649'

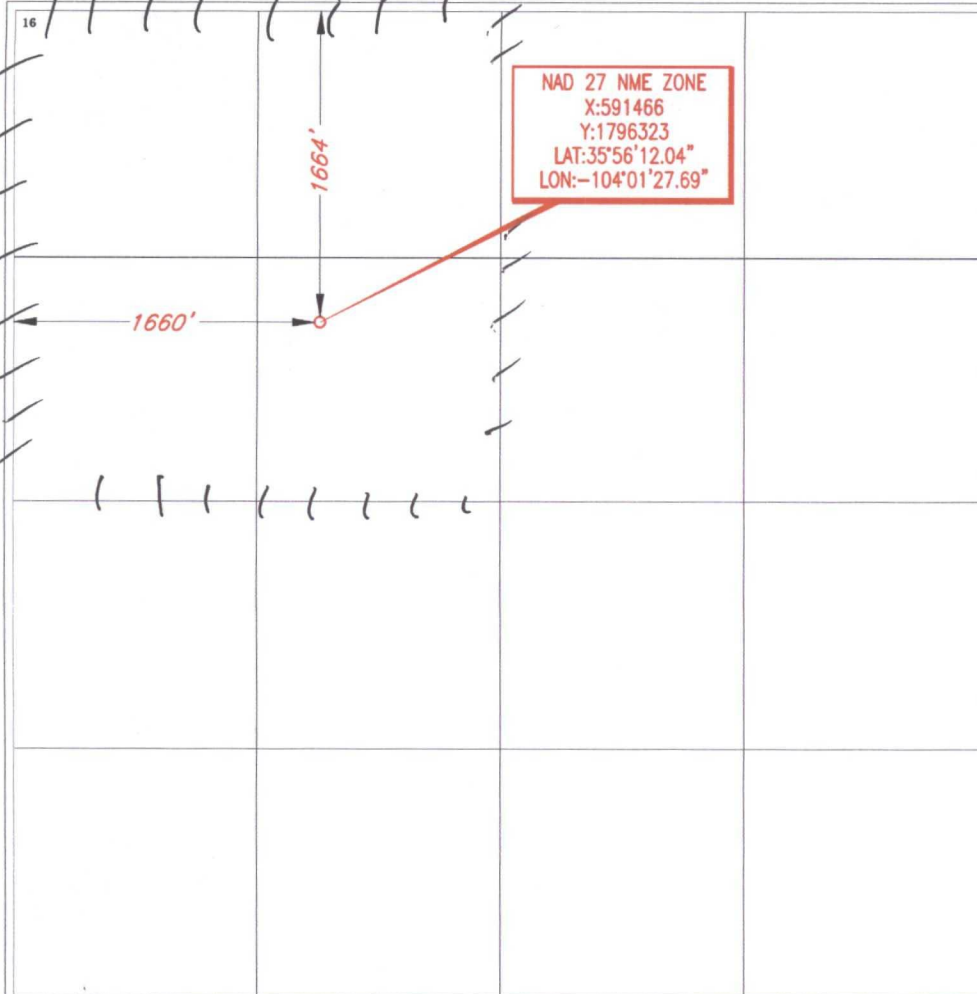
¹⁰Surface Location

UL or lot no.	Section	Township	Range	Lot Idn	Feet from the	North/South line	Feet from the	East/West line	County
F	25	20 NORTH	27 EAST, N.M.P.M.		1664'	NORTH	1660'	WEST	HARDING

¹¹Bottom Hole Location If Different From Surface

UL or lot no.	Section	Township	Range	Lot Idn	Feet from the	North/South line	Feet from the	East/West line	County
¹² Dedicated Acres 160	¹³ Joint or Infill	¹⁴ Consolidation Code	¹⁵ Order No.						

NO ALLOWABLE WELL BE ASSIGNED TO THIS COMPLETION UNTIL ALL INTERESTS HAVE BEEN CONSOLIDATED OR A NON-STANDARD UNIT HAS BEEN APPROVED BY THE DIVISION



¹⁷ OPERATOR CERTIFICATION

I hereby certify that the information contained herein is true and complete to the best of my knowledge and belief, and that this organization either owns a working interest or unleased mineral interest in the land including the proposed bottom hole location or has a right to drill this well at this location pursuant to a contract with an owner of such a mineral or working interest, or to a voluntary pooling agreement or a compulsory pooling order heretofore entered by the division.

Signature: Kay Maddox
Date: 5/14/2014
Printed Name: KAY MADDOX

¹⁸ SURVEYOR CERTIFICATION

I hereby certify that the well location shown on this plat was plotted from field notes of actual surveys made by me or under my supervision, and that the same is true and correct to the best of my belief.

MAY 12, 2014

Date of Survey
Signature and Seal of Professional Surveyor

V. LYNN BEZNER
NO. 7920
Certificate Number
V. Lynn Bezner P.S. #7920
FILE:LO_EBELL_2027_25_1 K.Y.