

**District I**  
1625 N. French Dr., Hobbs, NM 88240  
**District II**  
811 South First, Artesia, NM 88210  
**District III**  
1000 Rio Brazos Road, Aztec, NM 87410  
**District IV**  
2040 South Pacheco, Santa Fe, NM 87505

State of New Mexico  
Energy Minerals and Natural  
Resources

Oil Conservation Division  
2040 South Pacheco  
Santa Fe, NM 87505

Form C-101  
Revised March 17, 1999

Submit to appropriate District Office  
State Lease - 6 Copies  
Fee Lease - 5 Copies

☐ AMENDED REPORT

**APPLICATION FOR PERMIT TO DRILL, RE-ENTER, DEEPEN, PLUGBACK, OR ADD A ZONE**

<sup>1</sup> Operator Name and Address El Paso Energy Raton, L.L. C. P.O. Box 190 Raton, NM 87740		<sup>2</sup> OGRID Number 180514
		<sup>3</sup> API Number 30-007- 20688
<sup>3</sup> Property Code 25179	<sup>5</sup> Property Name Vermejo Park Ranch (VPR)	<sup>6</sup> Well No. VPR D 310

**<sup>7</sup> Surface Location**

UL or lot no.	Section	Township	Range	Lot Idn	Feet from the	North/South line	Feet from the	East/West line	County
1	2	30N	17E	1	2629	SOUTH	254	EAST	Colfax

**<sup>8</sup> Proposed Bottom Hole Locations If Different From Surface**

UL or lot no.	Section	Township	Range	Lot Idn	Feet from the	North/South line	Feet from the	East/West line	County
F	2	30N	17E	F	2011	FNL	1509	FWL	Colfax
C	2	30N	17E	C	251	FNL	2263	FWL	Colfax
O	35	31N	17E	O	754	FSL	1509	FEL	Colfax

<sup>9</sup> Proposed Pool 1 Vermejo	<sup>10</sup> Proposed Pool 2 Raton
---	--

<sup>11</sup> Work Type Code N	<sup>12</sup> Well Type Code G	<sup>13</sup> Cable/Rotary ROTARY/MUD MOTOR	<sup>14</sup> Lease Type Code P	<sup>15</sup> Ground Level Elevation 8209' (GL)
<sup>16</sup> Multiple Yes	<sup>17</sup> Proposed Depth 1600' TVD	<sup>18</sup> Formation Trinidad	<sup>19</sup> Contractor Not Available	<sup>20</sup> Spud Date January 01, 2006

**<sup>21</sup> Proposed Casing and Cement Program**

Hole Size	Casing Size	Casing weight/foot	Setting Depth	Sacks of Cement	Estimated TOC
12 1/4"	9 5/8"	36#	335'	150 sx.	SURFACE
8 3/4"	7	23#	1900' TVD	450 sx.	SURFACE
6 1/8"	4 1/2"	10.5#	5400' MD	NA	NA
6 1/8"	4 1/2"	10.5#	5400' MD	NA	NA
6 1/8"	4 1/2"	10.5#	5400' MD	NA	NA

**22** Describe the proposed program. If this application is to DEEPEN or PLUG BACK, give the data on the present productive zone and proposed new productive zone. Describe the blowout prevention program, if any. Use additional sheets if necessary.

- Drill 12 1/4" hole to +/- 335' with air.
- Set 9 5/8" surface casing and cement to surface with 150 sks of cement.
- Drill 8 3/4" hole to 1900' with air.
- Set 7" production casing to TD and cement to surface.
- Drill (3) - horizontal laterals with 6 1/8" directional tools. Set 4 1/2" perforated liners in horizontal liners.

**23** I hereby certify that the information given above is true and complete to the best of my knowledge and belief.

Signature: *DR Lankford*

Printed name: Donald R. Lankford

Title: Production Manager

Date: 12/29/2005

Phone: (505) 445-6721

**OIL CONSERVATION DIVISION**

Approved by: *[Signature]*

Title: DISTRICT SUPERVISOR

Approval Date: 1/17/06

Expiration Date: 1/17/07

Conditions of Approval:

Attached ☐

District I  
1625 N. French Dr., Hobbs, NM 88240  
District H  
1301 W. Grand Avenue, Artesia, NM 88210  
District III  
1000 Rio Brazos Rd., Aztec, NM 87410  
District IV  
1220 S. St. Francis Dr., Santa Fe, NM 87505

State of New Mexico  
Energy, Minerals & Natural Resources Department  
**OIL CONSERVATION DIVISION**  
1220 South St. Francis Dr.  
Santa Fe, NM 87505

Form C-102  
Revised October 12, 2005  
Submit to Appropriate District Office  
State Lease - 4 Copies  
Fee Lease - 3 Copies

☐ AMENDED REPORT

**WELL LOCATION AND ACREAGE DEDICATION PLAT**

<sup>1</sup> API Number	<sup>2</sup> Pool Code 97046	<sup>3</sup> Pool Name CASTLE ROCK PARK - VERMEJO GAS
<sup>4</sup> Property Code 25179	<sup>5</sup> Property Name VERMEJO PARK RANCH	<sup>6</sup> Well Number VPR'D'-310
<sup>7</sup> OGRID No. 180514	<sup>8</sup> Operator Name EL PASO ENERGY RATON, L.L.C.	<sup>9</sup> Elevation 8209'

<sup>10</sup> Surface Location

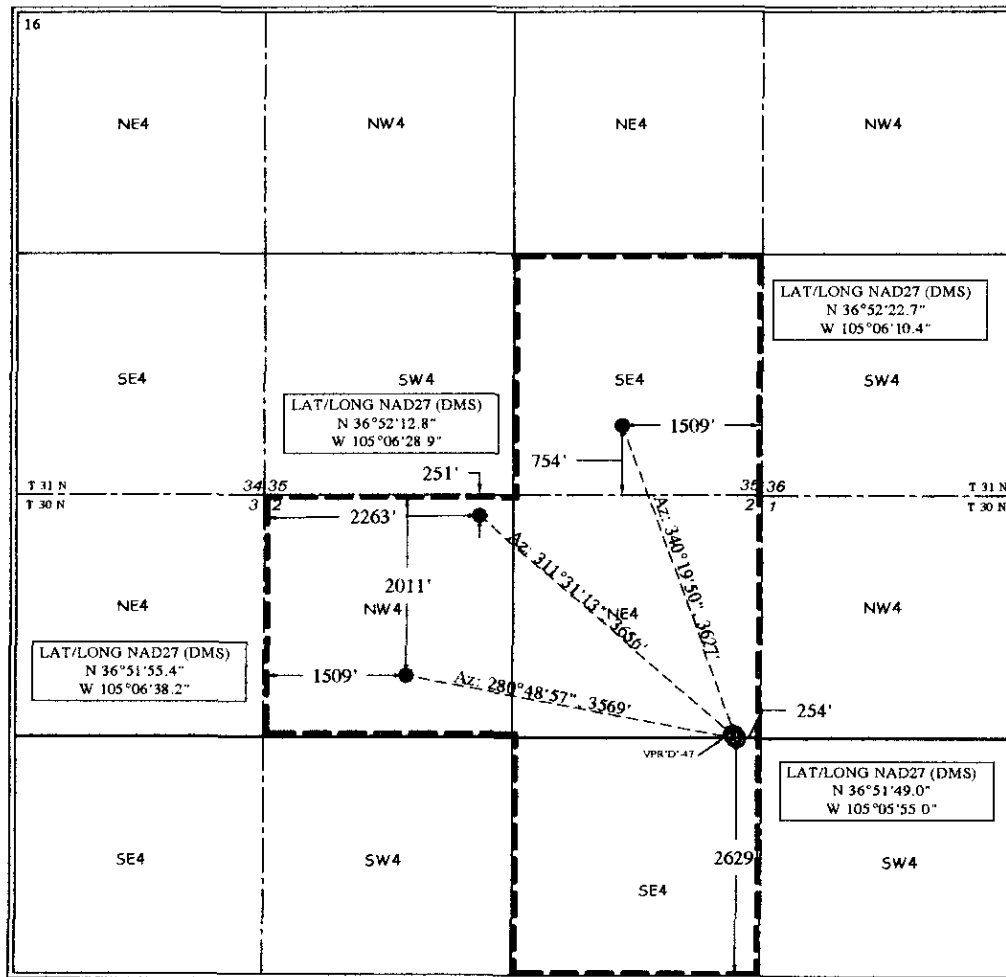
UL or lot no.	Section	Township	Range	Lot Idn	Feet from the	North/South line	Feet from the	East/West line	County
I	2	T 30 N	R 17 E	I	2629	SOUTH	254	EAST	COLFAX

<sup>11</sup> Bottom Hole Location If Different From Surface

UL or lot no.	Section	Township	Range	Lot Idn	Feet from the	North/South line	Feet from the	East/West line	County
F	2	T 30 N	R 17 E	F	2011	FNL	1509	FWL	COLFAX
C	2	T 30 N	R 17 E	C	251	FNL	2263	FWL	COLFAX
O	35	T 31 N	R 17 E	O	754	FSL	1509	FEL	COLFAX

<sup>12</sup> Dedicated Acres	<sup>13</sup> Joint or Infill	<sup>14</sup> Consolidation Code	<sup>15</sup> Order No.
-------------------------------	-------------------------------	----------------------------------	-------------------------

NO ALLOWABLE WILL BE ASSIGNED TO THIS COMPLETION UNTIL ALL INTERESTS HAVE BEEN CONSOLIDATED OR A NON-STANDARD UNIT HAS BEEN APPROVED BY THE DIVISION



<sup>17</sup> OPERATOR CERTIFICATION

I hereby certify that the information contained herein is true and complete to the best of my knowledge and belief, and that this organization either owns a working interest or unless mineral interest in the land including the proposed bottom hole location or has a right to drill this well at this location pursuant to a contract with an owner of such a mineral or working interest, or to a voluntary pooling agreement or a compulsory pooling order heretofore entered by the division.

Signature: *DR Lankford* Date: 12/29/05  
Printed Name: Don Lankford  
Production Manager

<sup>18</sup> SURVEYOR CERTIFICATION

I hereby certify that the well location shown on this plat was plotted from field notes of actual surveys made by me or under my supervision, and that the same is true and correct to the best of my belief.

December 21, 2005

Date of Survey

Signature and Seal of Professional Surveyor:

*Qu Shilds*  
Certificate Number: NM LS NO. 5103