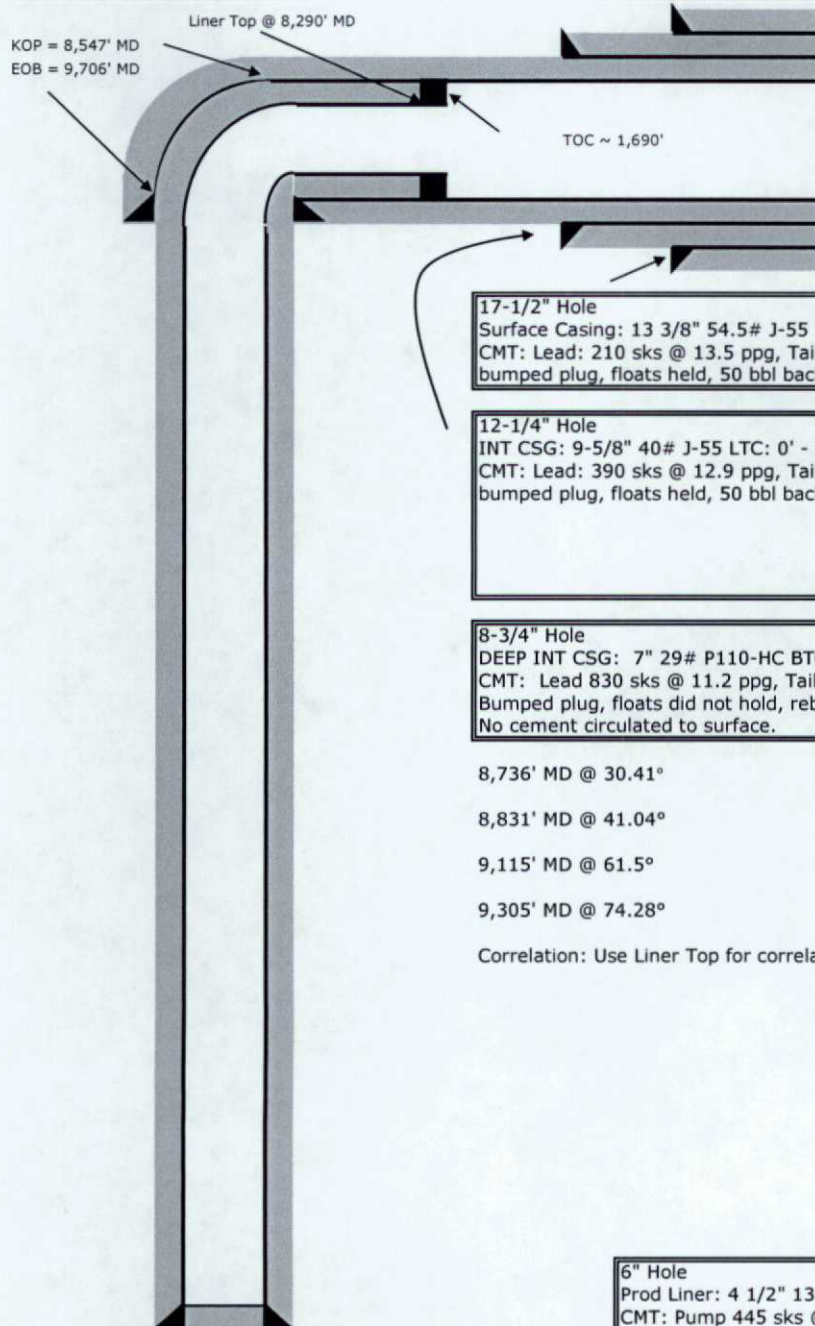




Cavern State 16-1H
Wellbore Diagram
Wolfcamp Shale
Eddy County, New Mexico
API # 30-015-43841

As Drilled 08/26/16



SHL: 2,310' FSL & 200' FWL of Sec 16, T 23S, R 27E
BHL: 2,310' FSL & 200' FEL of Sec 16, T 23S, R 27E
KB elev = 3,182'
GL elev = 3,157'
KB-GL: 25'
SPUD: 8/11/2016
TD: 8/26/2016

17-1/2" Hole
Surface Casing: 13 3/8" 54.5# J-55 STC: 0' - 450'
CMT: Lead: 210 sks @ 13.5 ppg, Tail 200 sks @ 14.8 ppg
bumped plug, floats held, 50 bbl back to surf.

12-1/4" Hole
INT CSG: 9-5/8" 40# J-55 LTC: 0' - 2,134'.
CMT: Lead: 390 sks @ 12.9 ppg, Tail 200 sks @ 14.8 ppg
bumped plug, floats held, 50 bbl back to surf.

8-3/4" Hole
DEEP INT CSG: 7" 29# P110-HC BTC: 0'-9,442'.
CMT: Lead 830 sks @ 11.2 ppg, Tail 200 sks @ 15.6 ppg,
Bumped plug, floats did not hold, rebump plug.
No cement circulated to surface.

8,736' MD @ 30.41°

8,831' MD @ 41.04°

9,115' MD @ 61.5°

9,305' MD @ 74.28°

Correlation: Use Liner Top for correlation.

TD = 13,850' MD
PBTD = 13,760' MD (FC, SLM)
Avg TVD Lat = 9,083'
Lat. Length = 4,595'
BHT 189°F

TVD @ Heel = 9,065'
TVD @ Toe = 9,100'

6" Hole
Prod Liner: 4 1/2" 13.5# P-110 CDC-HTQ: 8,286' - 13,843'
CMT: Pump 445 sks @ 14.5 ppg
Bump plug, floats held, circ 95 sks off liner top.
TOC ~ 1,690'