

Submit 1 Copy To Appropriate District
Office
District I
1625 N. French Dr., Hobbs, NM 88240
District II
1301 W. Grand Ave., Artesia, NM 88210
District III
1000 Rio Brazos Rd., Aztec, NM 87410
District IV
1220 S. St. Francis Dr., Santa Fe, NM
87505

State of New Mexico
Energy, Minerals and Natural Resources

Form C-103
October 13, 2009

OIL CONSERVATION DIVISION
1220 South St. Francis Dr.
Santa Fe, NM 87505

SUNDRY NOTICES AND REPORTS ON WELLS (DO NOT USE THIS FORM FOR PROPOSALS TO DRILL OR TO DEEPEN OR PLUG BACK TO A DIFFERENT RESERVOIR. USE "APPLICATION FOR PERMIT" (FORM C-101) FOR SUCH PROPOSALS.)		WELL API NO. 3005920538
1. Type of Well: Oil Well <input type="checkbox"/> Gas Well <input type="checkbox"/> Other: CO ₂ PRODUCER		5. Indicate Type of Lease STATE <input type="checkbox"/> FEE <input checked="" type="checkbox"/>
2. Name of Operator OXY USA INC		6. State Oil & Gas Lease No.
3. Address of Operator P.O. Box 303, Amistad, New Mexico 88410		7. Lease Name or Unit Agreement Name BRAVO DOME CARBON DIOXIDE GAS UNIT
4. Well Location Unit Letter <u>F</u> : <u>1800</u> feet from the NORTH line and <u>1700</u> feet from the WEST line Section <u>01</u> Township <u>20 N</u> Range <u>34 E</u> NMPM County <u>UNION</u>		8. Well Number 011
11. Elevation (Show whether DR, RKB, RT, GR, etc.) 4724' (GL)		9. OGRID Number 16696
		10. Pool name or Wildcat BRAVO DOME CARBON DIOXIDE GAS 640 - 96010

12. Check Appropriate Box to Indicate Nature of Notice, Report or Other Data

NOTICE OF INTENTION TO:

PERFORM REMEDIAL WORK ☐ PLUG AND ABANDON ☐
TEMPORARILY ABANDON ☐ CHANGE PLANS ☐
PULL OR ALTER CASING ☐ MULTIPLE COMPL ☐
DOWNHOLE COMMINGLE ☐

OTHER: ☐

SUBSEQUENT REPORT OF:

REMEDIAL WORK ☐ ALTERING CASING ☐
COMMENCE DRILLING OPNS. ☐ P AND A ☒
CASING/CEMENT JOB ☐

OTHER: ☐

13. Describe proposed or completed operations. (Clearly state all pertinent details, and give pertinent dates, including estimated date of starting any proposed work). SEE RULE 19.15.7.14 NMAC. For Multiple Completions: Attach wellbore diagram of proposed completion or recompletion.

SEE ENCLOSED INFORMATION AND WELLBORE SCHEMATIC

Spud Date:

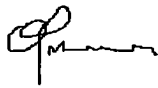
11/17/2017

Rig Release Date:

11/17/2017

I hereby certify that the information above is true and complete to the best of my knowledge and belief.

SIGNATURE



TITLE Engineering Advisor

DATE 2/5/2018

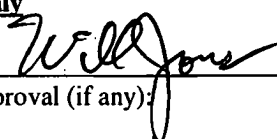
Type or print name AL GIUSSANI

E-mail address: albert_giussani@oxy.com

PHONE: 806 894-0200

For State Use Only

APPROVED BY:



TITLE



DATE

2/8/18

Conditions of Approval (if any):

DAILY SUMMARY:

BDU 2034-011F

API # 30-059-20538

11/17/17

4:00 – Safety Mtg and JSA

4:15 – Move equipment on to location

4:30 – MIRU Renegade wireline

4:45 – RIG and set CIBP @ 2396'

5:00 – Rig down wireline

5:10 – Load csg with FW, dig 50 bbl washout pit

5:15 – MIRU Basic Energy coil tubing and cementers

5:30 – Spool in well, Tag plug at 2396', test plug to 500#

6:00 – Spot 15 SX Class H 15.6 PPG CMT at 2396', displace with 4.8 bbls

6:17 – POOH to 2055'

6:20 – Spot 21 SX Class H 15.6 PPG CMT at 2055', displace with 4.8 bbls

6:35 – POOH to 831'

6:45 – Spot 12 SX Class H 15.6 PPG CMT at 831', displace with 4.8 bbls

6:55 – POOH to 100'

7:05 – Spot 13 SX Class H 15.6 PPG CMT at 100', displace with 4.8 bbls

7:20 – CMT at surface, Flush coil tubing with 10 bbls FW

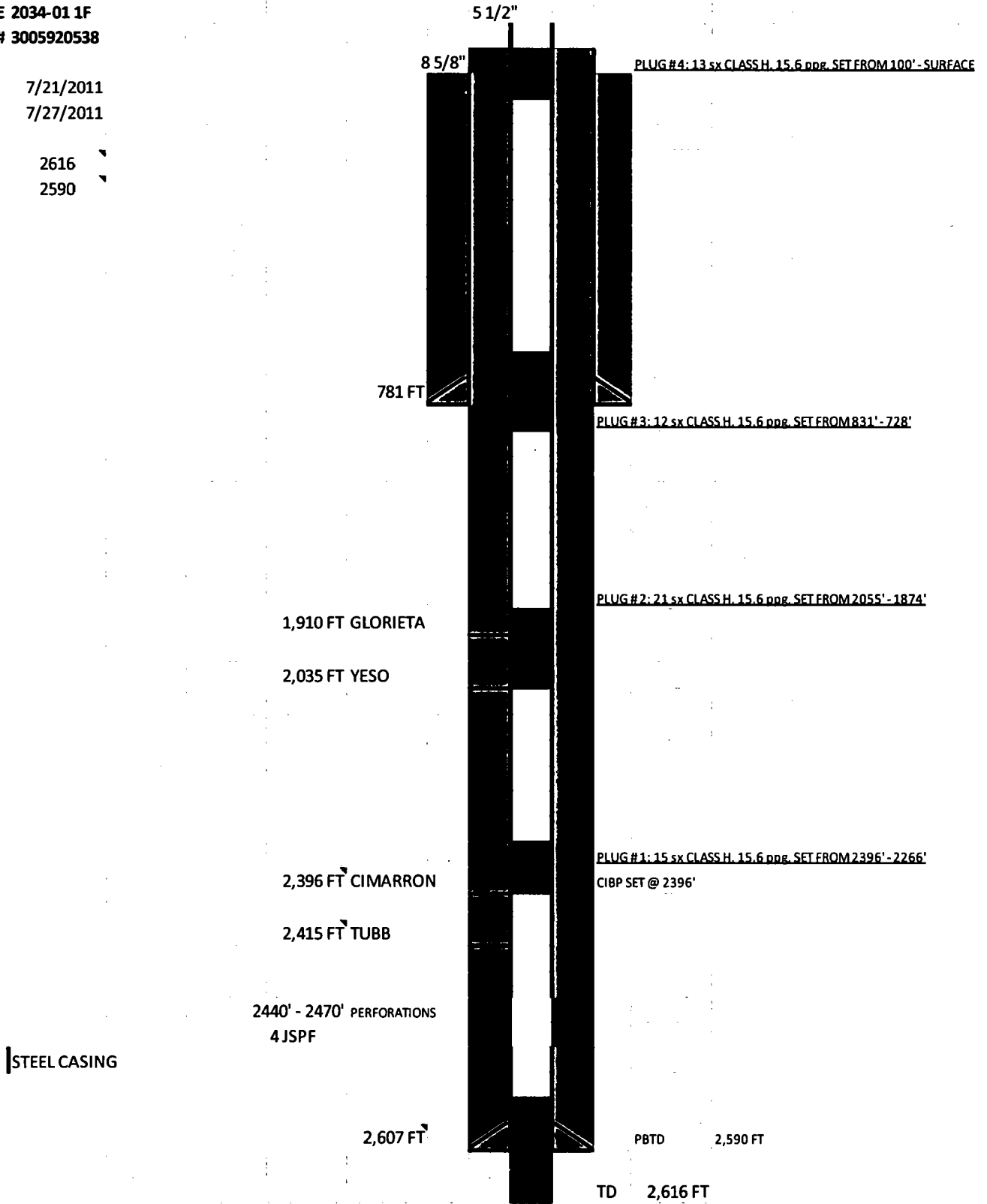
7:45 – RDMO

COMPLETED PA WORK

WELL NAME 2034-01 1F
API # 3005920538

SPUD 7/21/2011
RELEASE 7/27/2011

TD 2616
PBD 2590



WELL DETAILS:

SURFACE 12 1/4
 800
 8 5/8 24 #/FT J 55 SET @ 781
 500 SX - PREMIUM PLUS 2% CACL+ .25 LB/SX POL E FLAKE, 14.8 PPG, 1.35 CUFT/SX
 CIRCULATED 237 SX - FULL RETURNS THROUGH JOB

PRODUCTION 7 7/8
 2616
 5 1/2" 15.5 #/FT J 55 @ 2607
 510 SX - PREMIUM PLUS+2 % CACL+.25 LB/SX POL E FLAKE , 11.1 PPG , 3.25
 CUFT/SX
 150 SX - PREMIUM PLUS+2 % CACL+.25 LB/SX POL E FLAKE , 13.2 PPG , 1.85
 CUFT/SX
 DISPLACED WITH 62 BBLS - CIRCULATED 392 SX

CEMENTING DETAILS:

ALL PLUGS: CLASS H, 15.6 PPG

CIBP SET @ 2396' (TOP OF CIMARRON)

PLUG 1 (ON TOP OF CIBP) - ISOLATE PAY SECTION
15 SX - 2396' - 2266'

PLUG 2 - ISOLATE THE GLORIETTA FORMATION
21 SX - 2055' - 1874'

PLUG 3 - +/- 50 FT ACROSS SURFACE CASING SHOE
12 SX - 831' - 728'

PLUG 4 - SURFACE
13 SX - 100' - SURFACE

DEPTH OF GLORIETTA AND YESO WERE REPORTED INCORRECTLY IN THE ORIGINAL COMPLETION REPORT:

GLORIETTA: 1598'
YESO: 1676'

CORRECTED DEPTH OF:

GLORIETTA, TOP 1910'
YESO, TOP 2035'