

Di

**REGISTERED**ment  
ion Division  
Francis Dr.

For temporary pits, closed-loop systems, and below-grade tanks, submit to the appropriate NMOCD District Office.

Di

1000 Rio Brazos Rd., Aztec, NM 87410

Santa Fe, NM 87505

For permanent pits and exceptions submit to the Santa Fe Environmental Bureau office and provide a copy to the appropriate NMOCD District Office.

District IV

1220 S. St. Francis Dr., Santa Fe, NM 87505

**Pit, Closed-Loop System, Below-Grade Tank, or  
Proposed Alternative Method Permit or Closure Plan Application**

- Type of action: ☒ Permit of a pit, closed-loop system, below-grade tank, or proposed alternative method  
☐ Closure of a pit, closed-loop system, below-grade tank, or proposed alternative method  
☐ Modification to an existing permit  
☐ Closure plan only submitted for an existing permitted or non-permitted pit, closed-loop system, below-grade tank, or proposed alternative method

**Instructions: Please submit one application (Form C-144) per individual pit, closed-loop system, below-grade tank or alternative request**

Please be advised that approval of this request does not relieve the operator of liability should operations result in pollution of surface water, ground water or the environment. Nor does approval relieve the operator of its responsibility to comply with any other applicable governmental authority's rules, regulations or ordinances.

1  
Operator: ConocoPhillips Company OGRID#: 217817  
Address: PO Box 4289, Farmington, NM 87499  
Facility or well name: LUDWICK LS 16  
API Number: 3004509019 OCD Permit Number: \_\_\_\_\_  
U/L or Qtr/Qtr: G Section: 31 Township: 30N Range: 10W County: San Juan  
Center of Proposed Design: Latitude: 36.770999°N Longitude: -107.92199°W NAD: ☒ 1927 ☐ 1983  
Surface Owner: ☒ Federal ☐ State ☐ Private ☐ Tribal Trust or Indian Allotment

2  
☐ **Pit:** Subsection F or G of 19.15.17.11 NMAC  
Temporary: ☐ Drilling ☐ Workover  
☐ Permanent ☐ Emergency ☐ Cavitation ☐ P&A  
☐ Lined ☐ Unlined Liner type: Thickness \_\_\_\_\_ mil ☐ LLDPE ☐ HDPE ☐ PVC ☐ Other \_\_\_\_\_  
☐ String-Reinforced  
Liner Seams: ☐ Welded ☐ Factory ☐ Other \_\_\_\_\_ Volume: \_\_\_\_\_ bbl Dimensions L \_\_\_\_\_ x W \_\_\_\_\_ x D \_\_\_\_\_

3  
☐ **Closed-loop System:** Subsection H of 19.15.17.11 NMAC  
Type of Operation: ☐ P&A ☐ Drilling a new well ☐ Workover or Drilling (Applies to activities which require prior approval of a permit or notice of intent)  
☐ Drying Pad ☐ Above Ground Steel Tanks ☐ Haul-off Bins ☐ Other \_\_\_\_\_  
☐ Lined ☐ Unlined Liner type: Thickness \_\_\_\_\_ mil ☐ LLDPE ☐ HDPE ☐ PVD ☐ Other \_\_\_\_\_  
Liner Seams: ☐ Welded ☐ Factory ☐ Other \_\_\_\_\_

4  
☒ **Below-grade tank:** Subsection I of 19.15.17.11 NMAC  
Volume: 120 bbl Type of fluid: Produced Water  
Tank Construction material: Metal  
☐ Secondary containment with leak detection ☒ Visible sidewalls, liner, 6-inch lift and automatic overflow shut-off  
☐ Visible sidewalls and liner ☐ Visible sidewalls only ☐ Other \_\_\_\_\_  
Liner Type: Thickness \_\_\_\_\_ mil ☐ HDPE ☐ PVC ☒ Other Unspecified

5  
☐ **Alternative Method:**  
Submittal of an exception request is required. Exceptions must be submitted to the Santa Fe Environmental Bureau office for consideration of approval.

6\* **Fencing:** Subsection D of 19.15.17.11 NMAC (Applies to permanent pit, temporary pits, and below-grade tanks)

- ☐ Chain link, six feet in height, two strands of barbed wire at top (Required if located within 1000 feet of a permanent residence, school, hospital, institution or church)
- ☐ Four foot height, four strands of barbed wire evenly spaced between one and four feet
- ☒ Alternate. Please specify 4' hog wire fencing topped with two strands barbed wire.

7 **Netting:** Subsection E of 19.15.17.11 NMAC (Applies to permanent pits and permanent open top tanks)

- ☒ Screen ☐ Netting ☐ Other \_\_\_\_\_
- ☐ Monthly inspections (If netting or screening is not physically feasible)

8 **Signs:** Subsection C of 19.15.17.11 NMAC

- ☐ 12" X 24", 2" lettering, providing Operator's name, site location, and emergency telephone numbers
- ☒ Signed in compliance with 19.15.3.103 NMAC

9 **Administrative Approvals and Exceptions:**

Justifications and/or demonstrations of equivalency are required. Please refer to 19.15.17 NMAC for guidance.

Please check a box if one or more of the following is requested, if not leave blank:

- ☒ Administrative approval(s): Requests must be submitted to the appropriate division district of the Santa Fe Environmental Bureau office for consideration of approval. (Fencing/BGT Liner)
- ☐ Exception(s): Requests must be submitted to the Santa Fe Environmental Bureau office for consideration of approval.

10 **Siting Criteria (regarding permitting):** 19.15.17.10 NMAC

Instructions: The applicant must demonstrate compliance for each siting criteria below in the application. Recommendations of acceptable source material are provided below. Requests regarding changes to certain siting criteria may require administrative approval from the appropriate district office or may be considered an exception which must be submitted to the Santa Fe Environmental Bureau Office for consideration of approval. Applicant must attach justification for request. Please refer to 19.15.17.10 NMAC for guidance. Siting criteria does not apply to drying pads or above grade-tanks associated with a closed-loop system.

Ground water is less than 50 feet below the bottom of the temporary pit, permanent pit, or below-grade tank.

- NM Office of the State Engineer - iWATERS database search; USGS; Data obtained from nearby wells

☐ Yes ☒ No

Within 300 feet of a continuously flowing watercourse, or 200 feet of any other watercourse, lakebed, sinkhole, or playa lake (measured from the ordinary high-water mark).

- Topographic map; Visual inspection (certification) of the proposed site

☐ Yes ☒ No

Within 300 feet from a permanent residence, school, hospital, institution, or church in existence at the time of initial application.

(Applies to temporary, emergency, or cavitation pits and below-grade tanks)

- Visual inspection (certification) of the proposed site; Aerial photo; Satellite image

☐ Yes ☒ No

☐ NA

Within 1000 feet from a permanent residence, school, hospital, institution, or church in existence at the time of initial application.

(Applied to permanent pits)

- Visual inspection (certification) of the proposed site; Aerial photo; Satellite image

☐ Yes ☐ No

☒ NA

Within 500 horizontal feet of a private, domestic fresh water well or spring that less than five households use for domestic or stock watering purposes, or within 1000 horizontal feet of any other fresh water well or spring, in existence at the time of initial application.

- NM Office of the State Engineer - iWATERS database search; Visual inspection (certification) of the proposed site.

☐ Yes ☒ No

Within incorporated municipal boundaries or within a defined municipal fresh water well field covered under a municipal ordinance adopted pursuant to NMSA 1978, Section 3-27-3, as amended

- Written confirmation or verification from the municipality; Written approval obtained from the municipality

☐ Yes ☒ No

Within 500 feet of a wetland.

- US Fish and Wildlife Wetland Identification map; Topographic map; Visual inspection (certification) of the proposed site

☐ Yes ☒ No

Within the area overlying a subsurface mine.

- Written confirmation or verification or map from the NM EMNRD - Mining and Mineral Division

☐ Yes ☒ No

Within an unstable area.

- Engineering measures incorporated into the design; NM Bureau of Geology & Mineral Resources; USGS; NM Geological Society; Topographic map

☐ Yes ☒ No

Within a 100-year floodplain

- FEMA map

☐ Yes ☒ No

11

**Temporary Pits, Emergency Pits and Below-grade Tanks Permit Application Attachment Checklist:** Subsection B of 19.15.17.9 NMAC  
*Instructions: Each of the following items must be attached to the application. Please indicate, by a check mark in the box, that the documents are attached.*

- ☒ Hydrogeologic Report (Below-grade Tanks) - based upon the requirements of Paragraph (4) of Subsection B of 19.15.17.9 NMAC  
☐ Hydrogeologic Data (Temporary and Emergency Pits) - based upon the requirements of Paragraph (2) of Subsection B of 19.15.17.9  
☒ Siting Criteria Compliance Demonstrations - based upon the appropriate requirements of 19.15.17.10 NMAC  
☒ Design Plan - based upon the appropriate requirements of 19.15.17.11 NMAC  
☒ Operating and Maintenance Plan - based upon the appropriate requirements of 19.15.17.12 NMAC  
☒ Closure Plan (Please complete Boxes 14 through 18, if applicable) - based upon the appropriate requirements of Subsection C of 19.15.17.9 NMAC and 19.15.17.13 NMAC  
☐ Previously Approved Design (attach copy of design) API \_\_\_\_\_ or Permit \_\_\_\_\_

12

**Closed-loop Systems Permit Application Attachment Checklist:** Subsection B of 19.15.17.9 NMAC

*Instructions: Each of the following items must be attached to the application. Please indicate, by a check mark in the box, that the documents are attached.*

- ☐ Geologic and Hydrogeologic Data (only for on-site closure) - based upon the requirements of Paragraph (3) of Subsection B of 19.15.17.9  
☐ Siting Criteria Compliance Demonstrations (only for on-site closure) - based upon the appropriate requirements of 19.15.17.10 NMAC  
☐ Design Plan - based upon the appropriate requirements of 19.15.17.11 NMAC  
☐ Operating and Maintenance Plan - based upon the appropriate requirements of 19.15.17.12 NMAC  
☐ Closure Plan (Please complete Boxes 14 through 18, if applicable) - based upon the appropriate requirements of Subsection C of 19.15.17.9 NMAC and 19.15.17.13 NMAC  
☐ Previously Approved Design (attach copy of design) API \_\_\_\_\_  
☐ Previously Approved Operating and Maintenance Plan API \_\_\_\_\_

13

**Permanent Pits Permit Application Checklist:** Subsection B of 19.15.17.9 NMAC

*Instructions: Each of the following items must be attached to the application. Please indicate, by a check mark in the box, that the documents are attached.*

- ☐ Hydrogeologic Report - based upon the requirements of Paragraph (1) of Subsection B of 19.15.17.9 NMAC  
☐ Siting Criteria Compliance Demonstrations - based upon the appropriate requirements of 19.15.17.10 NMAC  
☐ Climatological Factors Assessment  
☐ Certified Engineering Design Plans - based upon the appropriate requirements of 19.15.17.11 NMAC  
☐ Dike Protection and Structural Integrity Design - based upon the appropriate requirements of 19.15.17.11 NMAC  
☐ Leak Detection Design - based upon the appropriate requirements of 19.15.17.11 NMAC  
☐ Liner Specifications and Compatibility Assessment - based upon the appropriate requirements of 19.15.17.11 NMAC  
☐ Quality Control/Quality Assurance Construction and Installation Plan  
☐ Operating and Maintenance Plan - based upon the appropriate requirements of 19.15.17.12 NMAC  
☐ Freeboard and Overtopping Prevention Plan - based upon the appropriate requirements of 19.15.17.11 NMAC  
☐ Nuisance or Hazardous Odors, including H<sub>2</sub>S, Prevention Plan  
☐ Emergency Response Plan  
☐ Oil Field Waste Stream Characterization  
☐ Monitoring and Inspection Plan  
☐ Erosion Control Plan  
☐ Closure Plan - based upon the appropriate requirements of Subsection C of 19.15.17.9 NMAC and 19.15.17.13 NMAC

14

**Proposed Closure:** 19.15.17.13 NMAC

*Instructions: Please complete the applicable boxes. Boxes 14 through 18, in regards to the proposed closure plan.*

- Type: ☐ Drilling ☐ Workover ☐ Emergency ☐ Cavitation ☐ P&A ☐ Permanent Pit ☒ Below-grade Tank ☐ Closed-loop System  
☐ Alternative  
 Proposed Closure Method: ☒ Waste Excavation and Removal (Below-Grade Tank)  
☐ Waste Removal (Closed-loop systems only)  
☐ On-site Closure Method (only for temporary pits and closed-loop systems)  
☐ In-place Burial ☐ On-site Trench  
☐ Alternative Closure Method (Exceptions must be submitted to the Santa Fe Environmental Bureau for consideration)

15

**Waste Excavation and Removal Closure Plan Checklist:** (19.15.17.13 NMAC) *Instructions: Each of the following items must be attached to the closure plan. Please indicate, by a check mark in the box, that the documents are attached.*

- ☒ Protocols and Procedures - based upon the appropriate requirements of 19.15.17.13 NMAC  
☒ Confirmation Sampling Plan (if applicable) - based upon the appropriate requirements of Subsection F of 19.15.17.13 NMAC  
☒ Disposal Facility Name and Permit Number (for liquids, drilling fluids and drill cuttings)  
☒ Soil Backfill and Cover Design Specifications - based upon the appropriate requirements of Subsection H of 19.15.17.13 NMAC  
☒ Re-vegetation Plan - based upon the appropriate requirements of Subsection I of 19.15.17.13 NMAC  
☒ Site Reclamation Plan - based upon the appropriate requirements of Subsection G of 19.15.17.13 NMAC



**Waste Removal Closure For Closed-loop Systems That Utilize Above Ground Steel Tanks or Haul-off Bins Only:** (19.15.17.13.D NMAC)

*Instructions: Please identify the facility or facilities for the disposal of liquids, drilling fluids and drill cuttings. Use attachment if more than two facilities are required.*

Disposal Facility Name: \_\_\_\_\_ Disposal Facility Permit #: \_\_\_\_\_

Disposal Facility Name: \_\_\_\_\_ Disposal Facility Permit #: \_\_\_\_\_

Will any of the proposed closed-loop system operations and associated activities occur on or in areas that *will not* be used for future service and operations?

☐ Yes (If yes, please provide the information) ☐ No

*Required for impacted areas which will not be used for future service and operations:*

☐ Soil Backfill and Cover Design Specification - based upon the appropriate requirements of Subsection H of 19.15.17.13 NMAC

☐ Re-vegetation Plan - based upon the appropriate requirements of Subsection I of 19.15.17.13 NMAC

☐ Site Reclamation Plan - based upon the appropriate requirements of Subsection G of 19.15.17.13 NMAC

**Siting Criteria (Regarding on-site closure methods only:** 19.15.17.10 NMAC

*Instructions: Each siting criteria requires a demonstration of compliance in the closure plan. Recommendations of acceptable source material are provided below. Requests regarding changes to certain siting criteria may require administrative approval from the appropriate district office or may be considered an exception which must be submitted to the Santa Fe Environmental Bureau office for consideration of approval. Justifications and/or demonstrations of equivalency are required. Please refer to 19.15.17.10 NMAC for guidance.*

Ground water is less than 50 feet below the bottom of the buried waste.

- NM Office of the State Engineer - iWATERS database search; USGS: Data obtained from nearby wells

☐ Yes ☐ No  
☐ N/A

Ground water is between 50 and 100 feet below the bottom of the buried waste

- NM Office of the State Engineer - iWATERS database search; USGS: Data obtained from nearby wells

☐ Yes ☐ No  
☐ N/A

Ground water is more than 100 feet below the bottom of the buried waste.

- NM Office of the State Engineer - iWATERS database search; USGS: Data obtained from nearby wells

☐ Yes ☐ No  
☐ N/A

Within 300 feet of a continuously flowing watercourse, or 200 feet of any other significant watercourse or lakebed, sinkhole, or playa lake (measured from the ordinary high-water mark).

- Topographic map; Visual inspection (certification) of the proposed site

☐ Yes ☐ No

Within 300 feet from a permanent residence, school, hospital, institution, or church in existence at the time of initial application.

- Visual inspection (certification) of the proposed site; Aerial photo; satellite image

☐ Yes ☐ No

☐ Yes ☐ No

Within 500 horizontal feet of a private, domestic fresh water well or spring that less than five households use for domestic or stock watering purposes, or within 1000 horizontal feet of any other fresh water well or spring, in existence at the time of the initial application.

- NM Office of the State Engineer - iWATERS database; Visual inspection (certification) of the proposed site

☐ Yes ☐ No

Within incorporated municipal boundaries or within a defined municipal fresh water well field covered under a municipal ordinance adopted pursuant to NMSA 1978, Section 3-27-3, as amended.

- Written confirmation or verification from the municipality: Written approval obtained from the municipality

☐ Yes ☐ No

Within 500 feet of a wetland

- US Fish and Wildlife Wetland Identification map; Topographic map; Visual inspection (certification) of the proposed site

☐ Yes ☐ No

Within the area overlying a subsurface mine.

- Written confirmation or verification or map from the NM EMNRD-Mining and Mineral Division

☐ Yes ☐ No

Within an unstable area.

- Engineering measures incorporated into the design; NM Bureau of Geology & Mineral Resources; USGS; NM Geological Society; Topographic map

☐ Yes ☐ No

Within a 100-year floodplain.

- FEMA map

**On-Site Closure Plan Checklist:** (19.15.17.13 NMAC) *Instructions: Each of the following items must be attached to the closure plan. Please indicate, by a check mark in the box, that the documents are attached.*

- ☐ Siting Criteria Compliance Demonstrations - based upon the appropriate requirements of 19.15.17.10 NMAC
- ☐ Proof of Surface Owner Notice - based upon the appropriate requirements of Subsection F of 19.15.17.13 NMAC
- ☐ Construction/Design Plan of Burial Trench (if applicable) based upon the appropriate requirements of 19.15.17.11 NMAC
- ☐ Construction/Design Plan of Temporary Pit (for in place burial of a drying pad) - based upon the appropriate requirements of 19.15.17.11 NMAC
- ☐ Protocols and Procedures - based upon the appropriate requirements of 19.15.17.13 NMAC
- ☐ Confirmation Sampling Plan (if applicable) - based upon the appropriate requirements of Subsection F of 19.15.17.13 NMAC
- ☐ Waste Material Sampling Plan - based upon the appropriate requirements of Subsection F of 19.15.17.13 NMAC
- ☐ Disposal Facility Name and Permit Number (for liquids, drilling fluids and drill cuttings or in case on-site closure standards cannot be achieved)
- ☐ Soil Cover Design - based upon the appropriate requirements of Subsection H of 19.15.17.13 NMAC
- ☐ Re-vegetation Plan - based upon the appropriate requirements of Subsection I of 19.15.17.13 NMAC
- ☐ Site Reclamation Plan - based upon the appropriate requirements of Subsection G of 19.15.17.13 NMAC

19

**Operator Application Certification:**

I hereby certify that the information submitted with this application is true, accurate and complete to the best of my knowledge and belief.

Name (Print): Crystal Tafoya Title: Regulatory Technician  
 Signature: Crystal Tafoya Date: 12/22/2008  
 e-mail address: crystal.tafoya@wrnccopphilips.com Telephone: 505-326-9837

20

**OCD Approval:** ☐ Permit Application (including closure plan) ☐ Closure Plan (only) ☐ OCD Conditions (see attachment)

**OCD Representative Signature:** \_\_\_\_\_ **Approval Date:** \_\_\_\_\_

**Title:** \_\_\_\_\_ **OCD Permit Number:** \_\_\_\_\_

21

**Closure Report (required within 60 days of closure completion):** Subsection K of 19.15.17.13 NMAC

*Instructions: Operators are required to obtain an approved closure plan prior to implementing any closure activities and submitting the closure report. The closure report is required to be submitted to the division within 60 days of the completion of the closure activities. Please do not complete this section of the form until an approved closure plan has been obtained and the closure activities have been completed.*

☐ **Closure Completion Date:** \_\_\_\_\_

22

**Closure Method:**

- ☐ Waste Excavation and Removal ☐ On-site Closure Method ☐ Alternative Closure Method ☐ Waste Removal (Closed-loop systems only)  
☐ If different from approved plan, please explain.

23

**Closure Report Regarding Waste Removal Closure For Closed-loop Systems That Utilize Above Ground Steel Tanks or Haul-off Bins Only:**

*Instructions: Please identify the facility or facilities for where the liquids, drilling fluids and drill cuttings were disposed. Use attachment if more than two facilities were utilized.*

Disposal Facility Name: \_\_\_\_\_ Disposal Facility Permit Number: \_\_\_\_\_

Disposal Facility Name: \_\_\_\_\_ Disposal Facility Permit Number: \_\_\_\_\_

Were the closed-loop system operations and associated activities performed on or in areas that will *not* be used for future service and operations?

☐ Yes (If yes, please demonstrate compliance to the items below) ☐ No

*Required for impacted areas which will not be used for future service and operations:*

- ☐ Site Reclamation (Photo Documentation)  
☐ Soil Backfilling and Cover Installation  
☐ Re-vegetation Application Rates and Seeding Technique

24

**Closure Report Attachment Checklist:** *Instructions: Each of the following items must be attached to the closure report. Please indicate, by a check mark in the box, that the documents are attached.*

- ☐ Proof of Closure Notice (surface owner and division)  
☐ Proof of Deed Notice (required for on-site closure)  
☐ Plot Plan (for on-site closures and temporary pits)  
☐ Confirmation Sampling Analytical Results (if applicable)  
☐ Waste Material Sampling Analytical Results (if applicable)  
☐ Disposal Facility Name and Permit Number  
☐ Soil Backfilling and Cover Installation  
☐ Re-vegetation Application Rates and Seeding Technique  
☐ Site Reclamation (Photo Documentation)

On-site Closure Location: Latitude: \_\_\_\_\_ Longitude: \_\_\_\_\_ NAD ☐ 1927 ☐ 1983

25

**Operator Closure Certification:**

*I hereby certify that the information and attachments submitted with this closure report is true, accurate and complete to the best of my knowledge and belief. I also certify that the closure complies with all applicable closure requirements and conditions specified in the approved closure plan.*

Name (Print): \_\_\_\_\_ Title: \_\_\_\_\_

Signature: \_\_\_\_\_ Date: \_\_\_\_\_

e-mail address: \_\_\_\_\_ Telephone: \_\_\_\_\_

**New Mexico Office of the State Engineer  
POD Reports and Downloads**

Township:  Range:  Sections:

NAD27 X:  Y:  Zone:  Search Radius:

County:  Basin:  Number:  Suffix:

Owner Name: (First)  (Last)  ☐ Non-Domestic ☐ Domestic ☒ All

POD / Surface Data Report

Avg Depth to Water Report

Water Column Report

Clear Form

iWATERS Menu

Help

**WATER COLUMN REPORT 08/21/2008**

(quarters are 1=NW 2=NE 3=SW 4=SE)  
(quarters are biggest to smallest)

POD Number	Tws	Rng	Sec	q	q	q	Zone	X	Y	Depth Well	Depth Water	Water (in feet) Column
<a href="#">SJ 00050</a>	30N	10W	02	1	3	2				520	306	214
<a href="#">SJ 03460</a>	30N	10W	02	1	3	2				520	500	20
<a href="#">SJ 03230</a>	30N	10W	03	1	2	1				120	70	50
<a href="#">SJ 03113</a>	30N	10W	05	4	1	4				42	30	12
<a href="#">SJ 00589</a>	30N	10W	08	1	1	1				175	150	25
<a href="#">SJ 00774</a>	30N	10W	08	1	2	1				195	160	35
<a href="#">SJ 02316</a>	30N	10W	08	1	3					210	98	112
<a href="#">SJ 02102</a>	30N	10W	08	1	3	4				190	90	100
<a href="#">SJ 01527</a>	30N	10W	08	2	2					120	60	60
<a href="#">SJ 01193</a>	30N	10W	08	2	2					100	70	30
<a href="#">SJ 02808</a>	30N	10W	08	2	3	4				165	105	60
<a href="#">SJ 01102</a>	30N	10W	08	2	4					200	159	41
<a href="#">SJ 02998</a>	30N	10W	08	3	3	1				260	117	143
<a href="#">SJ 02772</a>	30N	10W	08	4	2	2				200	160	40
<a href="#">SJ 00523</a>	30N	10W	08	4	4					160	120	40
<a href="#">SJ 01362</a>	30N	10W	20	1	3	3				238	190	48
<a href="#">SJ 03442</a>	30N	10W	20	1	4	1				200		
<a href="#">SJ 02782</a>	30N	10W	20	1	4	4				250		
<a href="#">SJ 02797</a>	30N	10W	20	2	4	1				70		
<a href="#">SJ 00024</a>	30N	10W	23	2	4	2				305		
<a href="#">SJ 00051</a>	30N	10W	23	2	4	2				305		
<a href="#">SJ 00197</a>	30N	10W	23	4	2					975	500	475
<a href="#">SJ 00010</a>	30N	10W	24	2						292		
<a href="#">SJ 01116</a>	30N	10W	33	2	1					105	45	60
<a href="#">SJ 01059</a>	30N	10W	34	1	2	4				115	75	40
<a href="#">SJ 01182</a>	30N	10W	34	1	3	3				235	125	110

Record Count: 26

**New Mexico Office of the State Engineer  
POD Reports and Downloads**

Township:  Range:  Sections:

NAD27 X:  Y:  Zone:  Search Radius:

County:  Basin:  Number:  Suffix:

Owner Name: (First)  (Last)  ☐ Non-Domestic ☐ Domestic ☒ All

POD / Surface Data Report

Avg Depth to Water Report

Water Column Report

Clear Form

iWATERS Menu

Help

**WATER COLUMN REPORT 08/21/2008**

(quarters are 1=NW 2=NE 3=SW 4=SE)  
(quarters are biggest to smallest)

POD Number	Tws	Rng	Sec	q	q	q	Zone	X	Y	Depth Well	Depth Water	Water (in Column)
RG 50669	30N	11W	27							360	310	50
SJ 02765	30N	11W	02	1	3					54	20	34
SJ 00975	30N	11W	02	1	3					60	20	40
SJ 01217	30N	11W	02	1	3					60	30	30
SJ 02837	30N	11W	02	3	4	1				150		
SJ 01437	30N	11W	03	1						40	28	12
SJ 03121	30N	11W	03	1	2	4				36	12	24
SJ 02049	30N	11W	03	1	3					26	8	18
SJ 01339	30N	11W	03	1	3	1				40	15	25
SJ 02814	30N	11W	03	1	3	2				31	8	23
SJ 00350	30N	11W	03	1	3	2				46	12	34
SJ 01441	30N	11W	03	1	3	2				48	20	28
SJ 02835	30N	11W	03	1	3	2				26	8	18
SJ 01387	30N	11W	03	1	4					40	18	22
SJ 03698 POD1	30N	11W	03	1	4	1				40	5	35
SJ 02785	30N	11W	03	1	4	2				31	5	26
SJ 01313	30N	11W	03	2						70	58	12
SJ 01805	30N	11W	03	2						35	20	15
SJ 01807	30N	11W	03	2	1					50	30	20
SJ 01202	30N	11W	03	2	1	2				35	8	27
SJ 02781	30N	11W	03	2	1	2				48	23	25
SJ 03758 POD1	30N	11W	03	2	1	2		268158	2127473	49	21	28
SJ 03765 POD1	30N	11W	03	2	1	2		268163	2127605	43	20	23
SJ 03756 POD1	30N	11W	03	2	1	2		268179	2127870	41	20	21
SJ 02786	30N	11W	03	2	3	1				51	24	27
SJ 01901	30N	11W	03	2	3	2				60	26	34
SJ 00698	30N	11W	03	2	3	3				44	14	30
SJ 01261	30N	11W	03	2	3	4					20	
SJ 02930	30N	11W	03	2	4	4				81	64	17
SJ 02798	30N	11W	03	2	4	4				80	61	19
SJ 00402	30N	11W	03	3						32	18	14
SJ 01734	30N	11W	03	3	2					33	5	28



SJ 00762	30N	11W	03	3	2				47	22	25	
SJ 01440	30N	11W	03	3	2	3			41	21	20	
SJ 01020	30N	11W	03	3	3				27	5	22	
SJ 03242	30N	11W	03	3	3	1			23	9	14	
SJ 03732 POD1	30N	11W	03	3	3	1			38	9	29	
SJ 03239	30N	11W	03	3	3	3			33	12	21	
SJ 01238	30N	11W	03	4	1				95	38	57	
SJ 02245	30N	11W	03	4	1	3			66	30	36	
SJ 01043	30N	11W	03	4	1	4			50			
SJ 01249	30N	11W	03	4	2				52	22	30	
SJ 02563	30N	11W	03	4	2	1			96	60	36	
SJ 02824	30N	11W	03	4	2	1			70	50	20	
SJ 03153	30N	11W	03	4	2	1			80	60	20	
SJ 03454	30N	11W	03	4	2	4			100			
SJ 03291	30N	11W	03	4	3	2			38	18	20	
SJ 00366	30N	11W	03	4	4	4			33	18	15	
SJ 01364	30N	11W	04	2					115	86	29	
SJ 03076	30N	11W	04	2	2	3			44	10	34	
SJ 02903	30N	11W	04	2	3	2			49	31	18	
SJ 03039	30N	11W	04	4	1	2			53	40	13	
SJ 01450	30N	11W	04	4	3				45	20	25	
SJ 02941	30N	11W	04	4	3	2			58	37	21	
SJ 01367	30N	11W	04	4	4	1			48	20	28	
SJ 03407	30N	11W	04	4	4	4	W	453700	2124100	30	5	25
SJ 03267	30N	11W	05	2	1	3			83	60	23	
SJ 03245	30N	11W	06	4	4	4			80	65	15	
SJ 02194	30N	11W	07						59	22	37	
SJ 02140	30N	11W	07	1	1	1			70	60	10	
SJ 00689	30N	11W	07	1	4	3			78	65	13	
SJ 00690	30N	11W	07	1	4	3			60			
SJ 00882	30N	11W	07	1	4	3			60	50	10	
SJ 00889	30N	11W	07	1	4	3			55			
SJ 00806	30N	11W	07	1	4	3			38	20	18	
SJ 00739	30N	11W	07	1	4	3			70	58	12	
SJ 00389	30N	11W	07	1	4	3			53			
SJ 00688	30N	11W	07	1	4	3			70	58	12	
SJ 00358	30N	11W	07	1	4	3			61	38	23	
SJ 00397	30N	11W	07	1	4	3			56	35	21	
SJ 00415	30N	11W	07	1	4	3			53	40	13	
SJ 00387	30N	11W	07	1	4	3						
SJ 00748	30N	11W	07	1	4	3			60	41	19	
SJ 03271	30N	11W	07	2	3	2						
SJ 01475	30N	11W	07	2	3	3			49	27	22	
SJ 03465	30N	11W	07	2	3	4			80			
SJ 00259	30N	11W	07	2	4				25	12	13	
SJ 01492	30N	11W	07	3					60	22	38	
SJ 03794 POD1	30N	11W	07	3	1	3		266272	2119520	44	27	17
SJ 01172	30N	11W	07	3	2				50	30	20	
SJ 01310	30N	11W	07	3	3				80	50	30	
SJ 01484	30N	11W	07	3	3				61	10	51	
SJ 03630	30N	11W	07	3	3	3			68	24	44	
SJ 01425	30N	11W	07	3	4				55	25	30	
SJ 01468	30N	11W	07	3	4				60	25	35	
SJ 02006	30N	11W	07	3	4	2			50	24	26	
SJ 03484	30N	11W	07	3	4	3			75			
SJ 02005	30N	11W	07	3	4	4			55	20	35	
SJ 02715	30N	11W	07	3	4	4			68	20	48	
SJ 00135	30N	11W	07	4	1				180	23	157	
SJ 00769	30N	11W	07	4	1				50	14	36	



<u>SJ 01406</u>	30N 11W 07 4 1	45	12	33
<u>SJ 02936</u>	30N 11W 07 4 1 1	38	30	8
<u>SJ 00679</u>	30N 11W 07 4 1 3	48	22	26
<u>SJ 00620</u>	30N 11W 07 4 1 3	52	35	17
<u>SJ 00329</u>	30N 11W 07 4 1 3	63	20	43
<u>SJ 00162</u>	30N 11W 07 4 1 3	58	23	35
<u>SJ 02906</u>	30N 11W 07 4 1 4	45	24	21
<u>SJ 00893</u>	30N 11W 07 4 2	80	40	40
<u>SJ 01667</u>	30N 11W 07 4 3	41	21	20
<u>SJ 01404</u>	30N 11W 07 4 3	40	15	25
<u>SJ 00919</u>	30N 11W 07 4 3 2	35	12	23
<u>SJ 00604</u>	30N 11W 07 4 3 2	38	22	16
<u>SJ 00601</u>	30N 11W 07 4 3 2	40	22	18
<u>SJ 00918</u>	30N 11W 07 4 3 2	35	14	21
<u>SJ 00920</u>	30N 11W 07 4 3 2	35	12	23
<u>SJ 01567</u>	30N 11W 07 4 4 2	35	14	21
<u>SJ 00183</u>	30N 11W 08 1 1	360	300	60
<u>SJ 03154</u>	30N 11W 08 1 1 4	40		
<u>SJ 03431</u>	30N 11W 08 1 4	50		
<u>SJ 00332</u>	30N 11W 08 2 2	52	34	18
<u>SJ 01451</u>	30N 11W 08 2 2	64	34	30
<u>SJ 01968</u>	30N 11W 08 2 2	40	25	15
<u>SJ 01999</u>	30N 11W 08 2 2	61	45	16
<u>SJ 01814</u>	30N 11W 08 2 2	52	10	42
<u>SJ 03398</u>	30N 11W 08 2 2 1	80	20	60
<u>SJ 03210</u>	30N 11W 08 2 2 2	60	30	30
<u>SJ 03098</u>	30N 11W 08 2 2 2	63	23	40
<u>SJ 03381</u>	30N 11W 08 2 2 2	50		
<u>SJ 03240</u>	30N 11W 08 2 2 2	50		
<u>SJ 00220</u>	30N 11W 08 2 2 3	60	36	24
<u>SJ 03639</u>	30N 11W 08 2 2 4	60	24	36
<u>SJ 01115</u>	30N 11W 08 2 2 4	35	26	9
<u>SJ 03653</u>	30N 11W 08 2 2 4	62	26	36
<u>SJ 03646</u>	30N 11W 08 2 2 4	61	24	37
<u>SJ 00228</u>	30N 11W 08 2 2 4	67	38	29
<u>SJ 03202</u>	30N 11W 08 2 4 2	45		
<u>SJ 03030</u>	30N 11W 08 2 4 2	56	40	16
<u>SJ 03305</u>	30N 11W 08 2 4 2	50		
<u>SJ 03378</u>	30N 11W 08 2 4 2	50		
<u>SJ 02331</u>	30N 11W 08 2 4 2	53	35	18
<u>SJ 03303</u>	30N 11W 08 2 4 2	55	30	25
<u>SJ 02293</u>	30N 11W 08 2 4 2	50	35	15
<u>SJ 00249</u>	30N 11W 08 2 4 2	46	30	16
<u>SJ 01368</u>	30N 11W 08 3 2	59	39	20
<u>SJ 03089</u>	30N 11W 08 3 2 4	48	36	12
<u>SJ 03480</u>	30N 11W 08 3 2 4	50		
<u>SJ 03199</u>	30N 11W 08 3 4 1	40	20	20
<u>SJ 02413</u>	30N 11W 08 3 4 1	40	31	9
<u>SJ 02915</u>	30N 11W 08 3 4 1	45		
<u>SJ 03367</u>	30N 11W 08 3 4 4	29	5	24
<u>SJ 01570</u>	30N 11W 08 4 1	59	37	22
<u>SJ 00925</u>	30N 11W 08 4 1 2	32	20	12
<u>SJ 03642</u>	30N 11W 08 4 1 2	58	32	26
<u>SJ 01520</u>	30N 11W 08 4 1 2	58	18	40
<u>SJ 03313</u>	30N 11W 08 4 1 4	58	20	38
<u>SJ 02485</u>	30N 11W 08 4 1 4	49	30	19
<u>SJ 02261</u>	30N 11W 08 4 3 2			
<u>SJ 03419</u>	30N 11W 08 4 4 2	41	9	32
<u>SJ 02241</u>	30N 11W 09 1	39	27	12

<u>SJ 01560</u>	30N	11W	09	1	1	36	26	10
<u>SJ 01585</u>	30N	11W	09	1	1	40	28	12
<u>SJ 03499</u>	30N	11W	09	1	1	53	12	41
<u>SJ 02236</u>	30N	11W	09	1	1	35	17	18
<u>SJ 03304</u>	30N	11W	09	1	1	55	30	25
<u>SJ 03209</u>	30N	11W	09	1	1	49	32	17
<u>SJ 03726 POD1</u>	30N	11W	09	1	1	47	30	17
<u>SJ 03342</u>	30N	11W	09	1	1	50	31	19
<u>SJ 03225</u>	30N	11W	09	1	1	50		
<u>SJ 03229</u>	30N	11W	09	1	1	50		
<u>SJ 00924</u>	30N	11W	09	1	2	46	16	30
<u>SJ 00438</u>	30N	11W	09	1	2	29	19	10
<u>SJ 01169</u>	30N	11W	09	1	3	56	33	23
<u>SJ 01574</u>	30N	11W	09	1	3	46	27	19
<u>SJ 02237</u>	30N	11W	09	1	3	48	28	20
<u>SJ 03019</u>	30N	11W	09	1	3	50	30	20
<u>SJ 02493</u>	30N	11W	09	1	3	49	26	23
<u>SJ 03724 POD1</u>	30N	11W	09	1	3	47	36	11
<u>SJ 03031</u>	30N	11W	09	1	3	55	35	20
<u>SJ 01465</u>	30N	11W	09	1	3	47		
<u>SJ 02336</u>	30N	11W	09	1	3	46	11	35
<u>SJ 03482</u>	30N	11W	09	1	3	50		
<u>SJ 03423</u>	30N	11W	09	1	3	50	20	30
<u>SJ 00750</u>	30N	11W	09	1	4	26	6	20
<u>SJ 02975</u>	30N	11W	09	2	1	37	12	25
<u>SJ 03268</u>	30N	11W	09	2	2	61	10	51
<u>SJ 00364</u>	30N	11W	09	2	3	50	20	30
<u>SJ 03128</u>	30N	11W	09	2	3	50		
<u>SJ 00364 CLW263561</u>	30N	11W	09	2	3	33	11	22
<u>SJ 01955</u>	30N	11W	09	2	4	40	11	29
<u>SJ 02528</u>	30N	11W	09	2	4	60	28	32
<u>SJ 02290</u>	30N	11W	09	2	4	45	15	30
<u>SJ 00347</u>	30N	11W	09	4		36	19	17
<u>SJ 01436</u>	30N	11W	09	4	1	210	50	160
<u>SJ 03471</u>	30N	11W	09	4	1	20	5	15
<u>SJ 03223</u>	30N	11W	09	4	2	59	25	34
<u>SJ 03263</u>	30N	11W	09	4	2	63	35	28
<u>SJ 03374</u>	30N	11W	09	4	3	44	29	15
<u>SJ 02796</u>	30N	11W	09	4	3	100		
<u>SJ 03214</u>	30N	11W	09	4	4	93	63	30
<u>SJ 03213</u>	30N	11W	09	4	4	100		
<u>SJ 02176</u>	30N	11W	10	1	3	57	37	20
<u>SJ 03356</u>	30N	11W	10	1	3	55	30	25
<u>SJ 03258</u>	30N	11W	10	1	3	55	10	45
<u>SJ 03444</u>	30N	11W	10	1	3	60		
<u>SJ 03248</u>	30N	11W	10	1	3	90	30	60
<u>SJ 03354</u>	30N	11W	10	1	3	80	30	50
<u>SJ 00348</u>	30N	11W	10	1	3	72	24	48
<u>SJ 03032</u>	30N	11W	10	1	4	80	30	50
<u>SJ 02819</u>	30N	11W	10	2	3	140	40	100
<u>SJ 03282</u>	30N	11W	10	2	3	70	30	40
<u>SJ 03281</u>	30N	11W	10	2	3	62	32	30
<u>SJ 03572</u>	30N	11W	10	3	1	70		
<u>SJ 03218</u>	30N	11W	10	3	3	50	30	20
<u>SJ 01720</u>	30N	11W	13			225	90	135
<u>SJ 03745 POD1</u>	30N	11W	13	1	1	325	150	175
<u>SJ 01693</u>	30N	11W	13	1	3	225	89	136
<u>SJ 01672</u>	30N	11W	13	1	3	180	80	100
<u>SJ 01294</u>	30N	11W	13	1	3	92	52	40

<b>SJ 02773</b>	30N	11W	16	1	1	3			46	25	21
<b>SJ 00410</b>	30N	11W	16	1	2				61	45	16
<b>SJ 03010</b>	30N	11W	16	1	3	1			80	40	40
<b>SJ 03257</b>	30N	11W	16	1	3	3			80	40	40
<b>SJ 02923</b>	30N	11W	16	1	3	3			75	40	35
<b>SJ 03265</b>	30N	11W	16	1	3	3			90	70	20
<b>SJ 03310</b>	30N	11W	16	1	3	3			55	20	35
<b>SJ 01082</b>	30N	11W	16	2	2	1			80	34	46
<b>SJ 01722</b>	30N	11W	17	1					20	8	12
<b>SJ 01528</b>	30N	11W	17	1	1				26	10	16
<b>SJ 03373</b>	30N	11W	17	1	1	3			50	35	15
<b>SJ 01948</b>	30N	11W	17	1	2				21	3	18
<b>SJ 02817</b>	30N	11W	17	1	2	2			15		
<b>SJ 01722 POD2</b>	30N	11W	17	1	2	4	266967	2116417	17	3	14
<b>SJ 01899</b>	30N	11W	17	1	3	2			27	7	20
<b>SJ 03771 POD1</b>	30N	11W	17	1	3	3	266811	211517	20	6	14
<b>SJ 03750 POD1</b>	30N	11W	17	1	3	3	266811	211517	20	6	14
<b>SJ 03319</b>	30N	11W	17	1	3	4			55	31	24
<b>SJ 03266</b>	30N	11W	17	1	4	3			30	10	20
<b>SJ 03436</b>	30N	11W	17	1	4	3			20		
<b>SJ 00745</b>	30N	11W	17	2					54	30	24
<b>SJ 00665</b>	30N	11W	17	2	1				28	14	14
<b>SJ 01342</b>	30N	11W	17	2	1	1			26	5	21
<b>SJ 00166</b>	30N	11W	17	2	3				48	11	37
<b>SJ 01057</b>	30N	11W	17	2	3				63	28	35
<b>SJ 01060</b>	30N	11W	17	2	3				58	23	35
<b>SJ 03241</b>	30N	11W	17	2	3	3			75	20	55
<b>SJ 03269</b>	30N	11W	17	2	3	4			80	10	70
<b>SJ 01200</b>	30N	11W	17	2	4				50	20	30
<b>SJ 03219</b>	30N	11W	17	2	4	2			68	38	30
<b>SJ 00159</b>	30N	11W	17	3	1				35	8	27
<b>SJ 03276</b>	30N	11W	17	3	1	4			60	20	40
<b>SJ 01296</b>	30N	11W	17	3	2				50	10	40
<b>SJ 03249</b>	30N	11W	17	3	2	2			55	12	43
<b>SJ 01810</b>	30N	11W	17	3	4				29	9	20
<b>SJ 00411</b>	30N	11W	17	4	1				60	25	35
<b>SJ 00234</b>	30N	11W	17	4	1				54	23	31
<b>SJ 01847</b>	30N	11W	17	4	1				30	6	24
<b>SJ 00457</b>	30N	11W	17	4	1	2			52	18	34
<b>SJ 00650</b>	30N	11W	17	4	1	3			49	18	31
<b>SJ 02018</b>	30N	11W	17	4	2				100	40	60
<b>SJ 00136</b>	30N	11W	17	4	2				69	35	34
<b>SJ 03718 POD1</b>	30N	11W	17	4	2	2			68	41	27
<b>SJ 03261</b>	30N	11W	17	4	2	2			88	50	38
<b>SJ 03215</b>	30N	11W	18	1	1	3			52	9	43
<b>SJ 01316</b>	30N	11W	18	1	1	3			46	12	34
<b>SJ 03152</b>	30N	11W	18	1	1	3			52	22	30
<b>SJ 02805</b>	30N	11W	18	1	2	1			60		
<b>SJ 03463</b>	30N	11W	18	1	2	1			70	20	50
<b>SJ 02996</b>	30N	11W	18	1	2	1			50	25	25
<b>SJ 00932</b>	30N	11W	18	1	2	4			32	15	17
<b>SJ 01738</b>	30N	11W	18	1	3				33	6	27
<b>SJ 01733</b>	30N	11W	18	1	3				29	9	20
<b>SJ 01786</b>	30N	11W	18	1	3				35	10	25
<b>SJ 01401</b>	30N	11W	18	1	3				44	12	32
<b>SJ 03526</b>	30N	11W	18	1	3	1			40		
<b>SJ 03176</b>	30N	11W	18	1	4	1			48	20	28
<b>SJ 03177</b>	30N	11W	18	1	4	2			37	15	22
<b>SJ 03344</b>	30N	11W	18	1	4	2			100	8	92

<b>SJ 03801</b>	<b>POD1</b>	30N	11W	18	2	2	266702	2116449	21	6	15
<b>SJ 03800</b>	<b>POD1</b>	30N	11W	18	2	2	266718	2116651	21	6	15
<b>SJ 01639</b>		30N	11W	18	2	2			40	18	22
<b>SJ 02098</b>		30N	11W	18	2	4			21	7	14
<b>SJ 02109</b>		30N	11W	18	2	4			19	4	15
<b>SJ 02123</b>		30N	11W	18	2	4			22	8	14
<b>SJ 03290</b>		30N	11W	18	2	4			40	10	30
<b>SJ 02045</b>		30N	11W	18	4				480	200	280
<b>SJ 03322</b>		30N	11W	18	4	4			40	10	30
<b>SJ 03320</b>		30N	11W	18	4	4			80		
<b>SJ 03321</b>		30N	11W	18	4	4			80		
<b>SJ 02193</b>		30N	11W	19						105	
<b>SJ 03403</b>		30N	11W	19	1	2			400		
<b>SJ 00638</b>		30N	11W	19	2	1			130	70	60
<b>SJ 01073</b>		30N	11W	19	2	1			100	38	62
<b>SJ 03615</b>		30N	11W	19	2	1			105	35	70
<b>SJ 03434</b>		30N	11W	19	2	1			140		
<b>SJ 03088</b>		30N	11W	19	2	1			120	80	40
<b>SJ 01636</b>		30N	11W	19	2	2			70	25	45
<b>SJ 02862</b>		30N	11W	19	2	2			20		
<b>SJ 00284</b>		30N	11W	19	2	4			200	35	165
<b>SJ 03645</b>		30N	11W	19	3	1			60	20	40
<b>SJ 03533</b>		30N	11W	19	3	1			20		
<b>SJ 01621</b>		30N	11W	19	3	2			40	38	2
<b>SJ 02692</b>		30N	11W	19	3	2			52	12	40
<b>SJ 02968</b>		30N	11W	19	3	2			75	5	70
<b>SJ 02812</b>		30N	11W	19	3	2			50		
<b>SJ 01123</b>		30N	11W	19	4	1			40	15	25
<b>SJ 03437</b>		30N	11W	19	4	1			30		
<b>SJ 03315</b>		30N	11W	19	4	1			60	54	6
<b>SJ 00284</b>	<b>CLW222415</b>	30N	11W	19	4	4			200	35	165
<b>SJ 03224</b>		30N	11W	30	1	2			80	30	50
<b>SJ 03077</b>		30N	11W	30	2	1			75	70	5
<b>SJ 03668</b>		30N	11W	30	2	1			380	280	100
<b>SJ 03251</b>		30N	11W	32	3	4			150	77	73

Record Count: 303



**New Mexico Office of the State Engineer  
POD Reports and Downloads**

Township:  Range:  Sections:

NAD27 X:  Y:  Zone:  Search Radius:

County:  Basin:  Number:  Suffix:

Owner Name: (First)  (Last)  ☐ Non-Domestic ☐ Domestic ☒ All

POD / Surface Data Report

Avg Depth to Water Report

Water Column Report

Clear Form

iWATERS Menu

Help

**WATER COLUMN REPORT 08/20/2008**

(quarters are 1=NW 2=NE 3=SW 4=SE)  
(quarters are biggest to smallest)

POD Number	Tw	Rng	Sec	q	q	q	Zone	X	Y	Depth Well	Depth Water	Water (in feet) Column
RG 36732 DCL	29N	10W	25	2						500	450	50
SJ 00785 S	29N	10W	04	2	4	2				20		
SJ 00680	29N	10W	13	2	2					40	10	30
SJ 00785 NEW	29N	10W	13	4						60	20	40
SJ 00785 S-2	29N	10W	13	4						60	20	40
SJ 03023	29N	10W	18	1	3	1				90	65	25
SJ 03502	29N	10W	18	1	3	1				150		
SJ 03081	29N	10W	18	3	1	4				20		
SJ 02078	29N	10W	19	3	1	1				40	9	31
SJ 00303	29N	10W	19	3	3					20	5	15
SJ 02860	29N	10W	19	4	4	4				21	2	19
SJ 02900	29N	10W	20	3	1	2				70		
SJ 01140	29N	10W	20	3	2	2				25	6	19
SJ 01990	29N	10W	20	4	1					40	12	28
SJ 02548	29N	10W	20	4	4					12	2	10
SJ 02547	29N	10W	20	4	4					12	2	10
SJ 03535	29N	10W	21	3	2	3				15		
SJ 03455	29N	10W	21	3	3	1				20	17	3
SJ 03456	29N	10W	21	3	3	2				20	17	3
SJ 03441	29N	10W	21	4	3	3				40	30	10
SJ 03470	29N	10W	21	4	3	4				20	7	13
SJ 01474	29N	10W	21	4	4					25		
SJ 03180	29N	10W	21	4	4	4				50	15	35
SJ 03713 POD1	29N	10W	22	2	3					265	20	245
SJ 02820	29N	10W	23	4	1	1				82	16	66
SJ 02896	29N	10W	24	1	4	1				110	34	76
SJ 02275	29N	10W	24	1	4	2				40	20	20
SJ 00092	29N	10W	24	2	4	2				33		
SJ 02802	29N	10W	24	3	1	2				132	30	102
SJ 02907	29N	10W	24	3	2	3				60		
SJ 02122	29N	10W	25	4	1					60	12	48
SJ 01019	29N	10W	26	4	3	3				50	4	46

<u>SJ 01056</u>	29N	10W	27	3	2			50	31	19
<u>SJ 02216</u>	29N	10W	28	1	2			30	7	23
<u>SJ 03582</u>	29N	10W	28	1	3	3		10	4	6
<u>SJ 02151</u>	29N	10W	28	2	1	2	W 484600 2075600	37	20	17
<u>SJ 03652</u>	29N	10W	28	2	2	1		34	6	28
<u>SJ 03142</u>	29N	10W	28	2	2	2		38	22	16
<u>SJ 03637</u>	29N	10W	28	2	3	1		21	10	11
<u>SJ 03582 POD2</u>	29N	10W	28	2	3	3		28	5	23
<u>SJ 02840</u>	29N	10W	28	3	4	1		55	32	23
<u>SJ 00506</u>	29N	10W	28	4	3			78	55	23
<u>SJ 00662</u>	29N	10W	28	4	4	3		93	70	23
<u>SJ 00497</u>	29N	10W	29	3	2	3		85	35	50
<u>SJ 03777 POD1</u>	29N	10W	29	4	4	2	270344 2071311	100	50	50
<u>SJ 00473</u>	29N	10W	30	2	4			58	10	48
<u>SJ 03743 POD1</u>	29N	10W	33	4	4	3		490	140	350
<u>SJ 01051</u>	29N	10W	35	2	2	2		90	30	60
<u>SJ 01050</u>	29N	10W	36	1	4			85	38	47

Record Count: 49

**New Mexico Office of the State Engineer  
POD Reports and Downloads**

Township:  Range:  Sections:

NAD27 X:  Y:  Zone:  Search Radius:

County:  Basin:  Number:  Suffix:

Owner Name: (First)  (Last)  ☐ Non-Domestic ☐ Domestic ☒ All

POD / Surface Data Report

Avg Depth to Water Report

Water Column Report

Clear Form

iWATERS Menu

Help

**WATER COLUMN REPORT 08/20/2008**

(quarters are 1=NW 2=NE 3=SW 4=SE)  
(quarters are biggest to smallest)

POD Number	Tws	Rng	Sec	q	q	q	Zone	X	Y	Depth Well	Depth Water	Water (in feet) Column
SJ 00867	29N	11W	07	4						77	55	22
SJ 01302	29N	11W	07	4	1					250	210	40
SJ 01891	29N	11W	07	4	1	3				157		
SJ 01851	29N	11W	10	4	4					125	48	77
SJ 02466 S	29N	11W	11	4	3	3				65		
SJ 02466	29N	11W	11	4	3	3				66		
SJ 02991	29N	11W	13	3	4	2				60		
SJ 03136	29N	11W	13	3	4	4				20		
SJ 00987	29N	11W	13	4						415	300	115
SJ 01426	29N	11W	14	1	4					155	10	145
SJ 00007	29N	11W	14	2	2	3				752		
SJ 03550	29N	11W	14	3	2	1				10		
SJ 01774	29N	11W	14	3	4	2				82	6	76
SJ 03360	29N	11W	14	3	4	2				40		
SJ 03175	29N	11W	14	4	2	1				60	24	36
SJ 03164	29N	11W	14	4	2	1				75	56	19
SJ 03733 POD1	29N	11W	15	4	2	1				64	20	44
SJ 02378	29N	11W	15	4	3	2				75	12	63
SJ 03579	29N	11W	15	4	4	1				83	30	53
SJ 02141	29N	11W	16	4	3	4				110	40	70
SJ 02926	29N	11W	17	2	4	3				375	80	295
SJ 03399	29N	11W	17	4	2					100		
SJ 00487	29N	11W	17	4	4					60	6	54
SJ 02868	29N	11W	17	4	4	4				50		
SJ 01641	29N	11W	19	2	2	3				120	55	65
SJ 02026	29N	11W	19	3	1			440000	2077700	27	6	21
SJ 02970	29N	11W	19	4	3	2				100	18	82
SJ 01250	29N	11W	19	4	4					60	20	40
SJ 02869	29N	11W	20	2	2	1				50		
SJ 00583	29N	11W	20	3	3	2				150	30	120
SJ 01355	29N	11W	20	4	4					36	3	33
SJ 00452	29N	11W	21							42	10	32

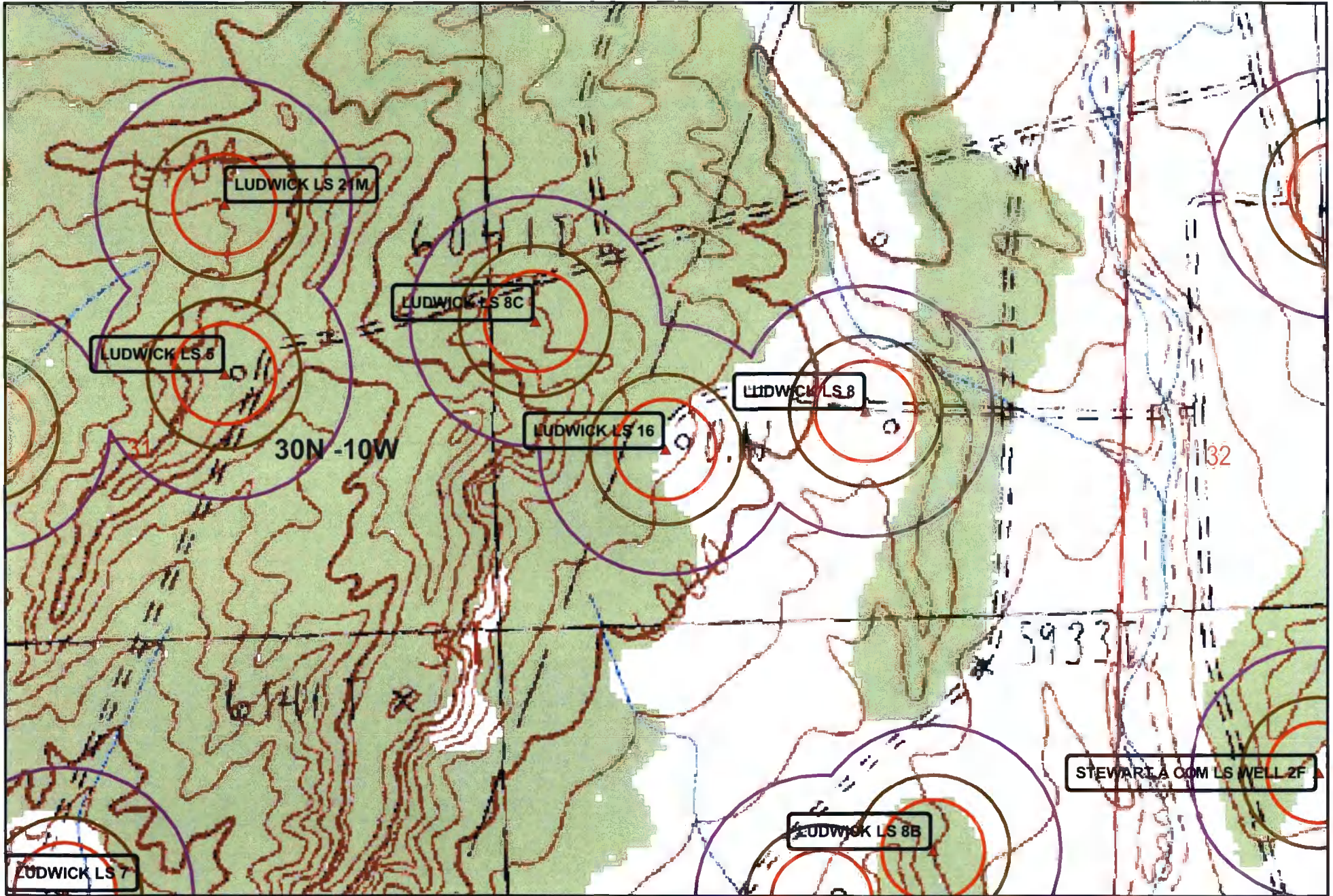
<u>SJ 01969</u>	29N	11W	21	2	65	55	10
<u>SJ 00701 CLW312190</u>	29N	11W	21	2 2	70	14	56
<u>SJ 00701</u>	29N	11W	21	2 2 1	73		
<u>SJ 03350</u>	29N	11W	21	2 2 3	50		
<u>SJ 01090</u>	29N	11W	21	2 4	31	12	19
<u>SJ 02863</u>	29N	11W	21	2 4 1	52	20	32
<u>SJ 03659</u>	29N	11W	21	3 2 2	45	10	35
<u>SJ 01888</u>	29N	11W	21	4 2 2	47	8	39
<u>SJ 02200</u>	29N	11W	22		60	22	38
<u>SJ 01557</u>	29N	11W	22	1 2	70	11	59
<u>SJ 00796</u>	29N	11W	22	1 2	50	8	42
<u>SJ 00704</u>	29N	11W	22	1 2	55	20	35
<u>SJ 01703</u>	29N	11W	22	1 2	68	3	65
<u>SJ 03747 POD1</u>	29N	11W	22	1 2 3	47	27	20
<u>SJ 02813</u>	29N	11W	22	1 2 3	59	16	43
<u>SJ 01214</u>	29N	11W	22	1 3	49	12	37
<u>SJ 00484</u>	29N	11W	22	1 3 1	37	10	27
<u>SJ 00320</u>	29N	11W	22	1 3 1	38	10	28
<u>SJ 03532</u>	29N	11W	22	1 3 3	49	14	35
<u>SJ 00151</u>	29N	11W	22	1 3 4	45	18	27
<u>SJ 02721</u>	29N	11W	22	1 4		59	
<u>SJ 03503</u>	29N	11W	22	2 3 3	72	18	54
<u>SJ 02578</u>	29N	11W	22	2 3 3	58	24	34
<u>SJ 03093</u>	29N	11W	22	2 3 4	42	22	20
<u>SJ 03189</u>	29N	11W	22	3 2 1	45	20	25
<u>SJ 03188</u>	29N	11W	22	3 2 2	45	11	34
<u>SJ 02020</u>	29N	11W	22	3 3	27	6	21
<u>SJ 02138</u>	29N	11W	22	4 2	40	7	33
<u>SJ 02529</u>	29N	11W	22	4 2 3	30	9	21
<u>SJ 03479</u>	29N	11W	22	4 2 3	43	4	39
<u>SJ 03049</u>	29N	11W	22	4 2 4	33	10	23
<u>SJ 00696</u>	29N	11W	22	4 3	34	12	22
<u>SJ 01974</u>	29N	11W	22	4 3 3	47	11	36
<u>SJ 03567</u>	29N	11W	23	1 2 3	50	22	28
<u>SJ 03557</u>	29N	11W	23	1 3 1	50	15	35
<u>SJ 03558</u>	29N	11W	23	1 3 1	50	15	35
<u>SJ 03559</u>	29N	11W	23	1 3 4	45	15	30
<u>SJ 00812</u>	29N	11W	23	1 4	44		
<u>SJ 03546</u>	29N	11W	23	1 4 2	50	15	35
<u>SJ 03591</u>	29N	11W	23	1 4 4	55	20	35
<u>SJ 01870</u>	29N	11W	23	2	58	30	28
<u>SJ 03130</u>	29N	11W	23	2 1 3	50	30	20
<u>SJ 03201</u>	29N	11W	23	2 1 3	60	30	30
<u>SJ 03353</u>	29N	11W	23	2 1 3	45	25	20
<u>SJ 01610</u>	29N	11W	23	2 2	52	25	27
<u>SJ 01573</u>	29N	11W	23	2 3	41	21	20
<u>SJ 03073</u>	29N	11W	23	2 3 1	30		
<u>SJ 03286</u>	29N	11W	23	3 3 1	38	28	10
<u>SJ 02799</u>	29N	11W	23	4 1 1	56	15	41
<u>SJ 03548</u>	29N	11W	23	4 1 1	50	15	35
<u>SJ 01962</u>	29N	11W	24	1 2 2	45	12	33
<u>SJ 03343</u>	29N	11W	24	1 4 1	35	18	17
<u>SJ 00804</u>	29N	11W	25	1 4	37	25	12
<u>SJ 01808 0-5</u>	29N	11W	26	3 1 1	52	43	9
<u>SJ 02121</u>	29N	11W	27	1 1	30	6	24
<u>SJ 02210</u>	29N	11W	27	1 1	32	8	24
<u>SJ 03588</u>	29N	11W	27	1 1 2			
<u>SJ 02227</u>	29N	11W	27	1 1 4	27	6	21
<u>SJ 00700</u>	29N	11W	27	1 3 3	20	7	13



<u>SJ 01808 0-4</u>	29N	11W	27	2	3	3	32	25	7
<u>SJ 01808 0-1</u>	29N	11W	27	2	4	2	25	17	8
<u>SJ 01808 0-2</u>	29N	11W	27	2	4	3	27	19	8
<u>SJ 01808 0-3</u>	29N	11W	27	2	4	4	39	34	5
<u>SJ 02664</u>	29N	11W	27	3	2		40	26	14
<u>SJ 02664 S</u>	29N	11W	27	3	2		38	23	15
<u>SJ 02664 S-2</u>	29N	11W	27	3	2		34	19	15
<u>SJ 02664 S-3</u>	29N	11W	27	3	2		41	30	11
<u>SJ 02664 S-9</u>	29N	11W	27	3	2		33	19	14
<u>SJ 02664 S-4</u>	29N	11W	27	3	2		42	30	12
<u>SJ 02664 S-10</u>	29N	11W	27	3	2		33	19	14
<u>SJ 02664 S-5</u>	29N	11W	27	3	2		41	30	11
<u>SJ 02664 S-6</u>	29N	11W	27	3	2		40	28	12
<u>SJ 02664 S-7</u>	29N	11W	27	3	2		37	23	14
<u>SJ 02664 S-8</u>	29N	11W	27	3	2		35	25	10
<u>SJ 02148</u>	29N	11W	27	4	2		305	186	119
<u>SJ 01808 0-6</u>	29N	11W	27	4	2	1	50		
<u>SJ 03762 POD1</u>	29N	11W	28	1	1		267348	2075529	27
<u>SJ 03476</u>	29N	11W	28	1	1	2	65	15	12
<u>SJ 03415</u>	29N	11W	28	1	2	1	60	20	40
<u>SJ 02559</u>	29N	11W	28	1	2	4	15	7	8
<u>SJ 02330</u>	29N	11W	28	2	1		128	115	13
<u>SJ 03021</u>	29N	11W	28	2	1	3	16	5	11
<u>SJ 01606</u>	29N	11W	28	2	2		35	8	27
<u>SJ 03468</u>	29N	11W	28	2	4		367704	2073506	50
<u>SJ 03469</u>	29N	11W	28	2	4	3	50		
<u>SJ 02713</u>	29N	11W	28	3	1	1	26	12	14
<u>SJ 02858</u>	29N	11W	28	3	1	3	40		
<u>SJ 02714</u>	29N	11W	28	3	2		43	28	15
<u>SJ 02708</u>	29N	11W	28	3	2		26	12	14
<u>SJ 03149</u>	29N	11W	28	4	2	2	60	35	25
<u>SJ 03475</u>	29N	11W	29	1	1	3	40	20	20
<u>SJ 00292</u>	29N	11W	29	2	1	4	24	9	15
<u>SJ 01554</u>	29N	11W	29	2	2		35	18	17
<u>SJ 02038</u>	29N	11W	29	4	1		14	4	10
<u>SJ 03298</u>	29N	11W	29	4	1	1	70	6	64
<u>SJ 02023</u>	29N	11W	29	4	2		24	7	17
<u>SJ 02182</u>	29N	11W	29	4	2		27	11	16
<u>SJ 00822</u>	29N	11W	29	4	3		34	15	19
<u>SJ 03421</u>	29N	11W	29	4	4	3	50	28	22
<u>SJ 01391</u>	29N	11W	30	2			40	25	15
<u>SJ 03348</u>	29N	11W	30	2	1	3	60		
<u>SJ 01260</u>	29N	11W	30	2	2		42	16	26
<u>SJ 01264</u>	29N	11W	30	2	2		27	12	15
<u>SJ 01328</u>	29N	11W	30	2	2		28	15	13
<u>SJ 01821</u>	29N	11W	30	2	4		70	6	64
<u>SJ 00875</u>	29N	11W	30	4	1		37	20	17
<u>SJ 02922</u>	29N	11W	31	3	2	2	75		
<u>SJ 03795 POD1</u>	29N	11W	31	3	2	4	266438	2067001	75
<u>SJ 03541</u>	29N	11W	31	3	4	1	80	45	30
<u>SJ 00441</u>	29N	11W	32	2	2			40	40
<u>SJ 00103</u>	29N	11W	32	4	4	4	263		
<u>SJ 00103 S</u>	29N	11W	32	4	4	4	254		
<u>SJ 03666</u>	29N	11W	33	2	1	3	49	30	19

Record Count: 145





Wetlands data acquired from U.S. Fish  
and Wildlife  
<http://wetlandswms.er.usgs.gov>

**Ground Water**

- + iWaters
- + COP

**Buffers**

- 200ft
- 300ft
- 500ft
- Wetlands

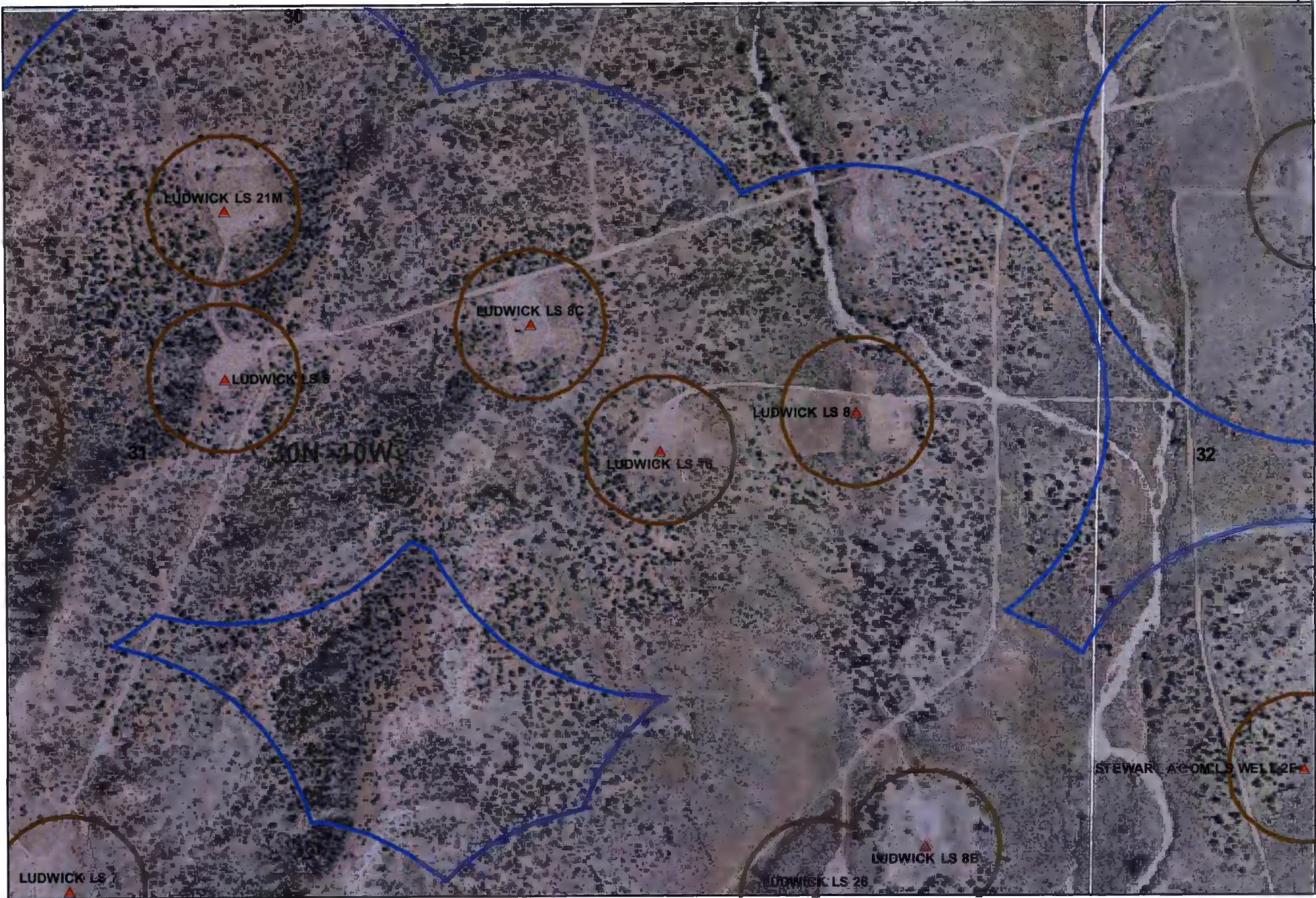
0 500 1,000  
Feet  
1:6,000

NAD\_1983\_StatePlane\_  
NMWest\_FIPS\_3003

8/08



# AERIAL MAP LUDWICK LS 16



Data Source  
Aerial flown locally Sedgewick in 2005.

 1000FT  300FT

0 500 1,000  
Feet  
1:6,000

NAD\_1983\_SP\_  
NM West\_FIPS\_3003  
8/08



# Mines, Mills and Quarries Web Map

LUDWICK LS 16

Unit Letter: G, Section: 31, Town: 030N, Range: 010W

## Mines, Mills & Quarries Commodity Groups

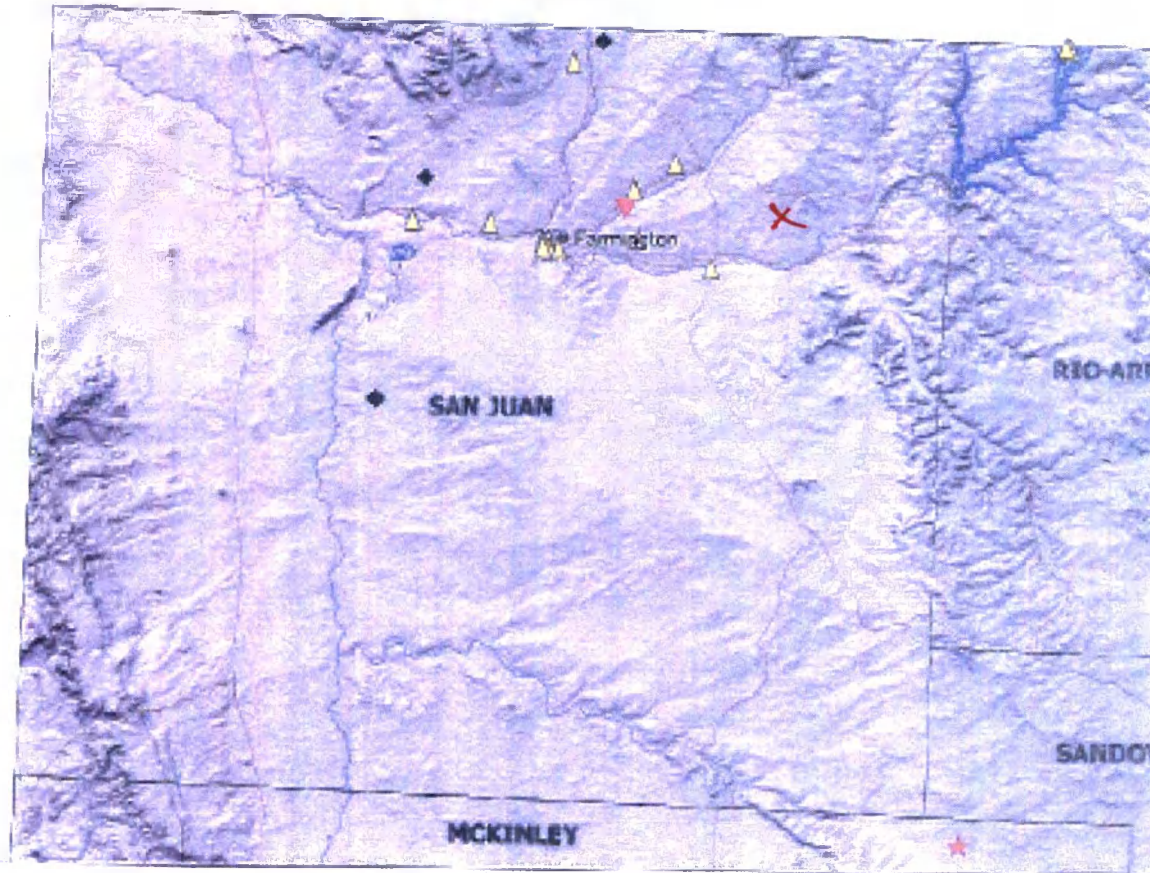
-  Aggregate & Stone Mines
-  Coal Mines
-  Industrial Minerals Mines
-  Industrial Minerals Mills
-  Metal Mines and Mill Concentrate
-  Potash Mines & Refineries
-  Smelters & Refinery Ops.
-  Uranium Mines
-  Uranium Mills

## Population

-  Cities - major

## Transportation

-  Railways
-  Interstate Highways
-  Major Roads

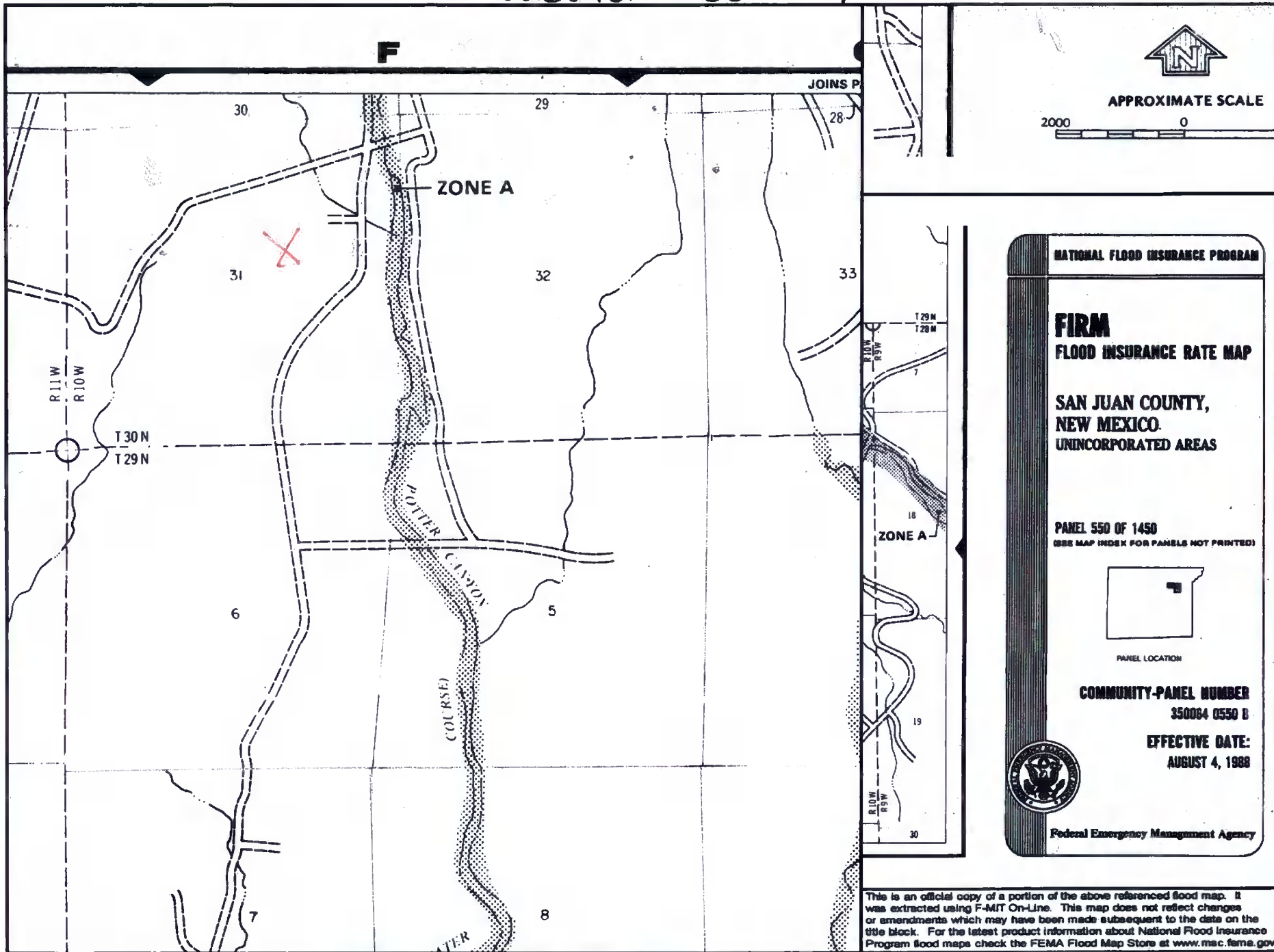


SCALE 1 : 1,180,363





Ludwick LS #16



## LUDWICK LS 16

### Site Specific Hydrogeology

A visual site inspection confirming the information contained herein was performed on the well 'LUDWICK LS 16', which is located at 36.770999 degrees North latitude and 107.92199 degrees West longitude. This location is located on the Aztec 7.5' USGS topographic quadrangle. This location is in section 31 of Township 30 North Range 10 West of the Public Land Survey System (New Mexico Principal Meridian). This location is located in San Juan County, New Mexico. The nearest town is Aztec, located 5.3 miles to the northwest. The nearest large town (population greater than 10,000) is Farmington, located 15.9 miles to the west (National Atlas). The nearest highway is State Highway 575, located 1.6 miles to the northeast. The location is on BLM land and is 2,855 feet from the edge of the parcel as notated in the BLM land status layer updated January 2008. This location is in the Upper San Juan, Colorado, New Mexico, Sub-basin. This location is located 1837 meters or 6025 feet above sea level and receives 12 inches of rain each year. The vegetation at this location is classified as Colorado Plateau Mixed Bedrock Canyon and Tableland as per the Southwest Regional Gap Analysis Program.

The estimated depth to ground water at this point is 90 feet. This estimation is based on the data published on the New Mexico Engineer's iWaters Database website and water depth data from ConocoPhillips' cathodic wells. Groundwater data available from the NM State Engineer's iWaters Database for wells near the proposed site are attached. The nearest stream is 701 feet to the northeast and is classified by the USGS as an intermittent stream. The nearest perennial stream is 1,735 feet to the east. The nearest water body is 8,288 feet to the southeast. It is classified by the USGS as an intermittent lake and is 0.3 acres in size. The nearest spring is 11,462 feet to the southeast. All stream, river, water body and spring information was determined as per the USGS Hydrographic Dataset (High Resolution), downloaded 3/2008. The nearest water well is 10,042 feet to the north. The nearest wetland is a 17.1 acre Ravine located 13,503 feet to the east. The slope at this location is 3 degrees to the east as calculated from USGS 30M National Elevation Dataset. This information is also discerned from the aerial and topographic map included. The surface geology at this location is NACIMIENTO FORMATION--Shale and sandstone with a Shale dominated formations of all ages substrate. The soil at this location is 'Gypsiorthids-Badland-Stumble complex, moderately steep' and is somewhat excessively drained and not hydric with severe erosion potential as taken from the NRCS SSURGO map unit, downloaded January 2008. The nearest underground mine is 13.4 miles to the north as indicated on the Mines, Mills and Quarries Map of New Mexico provided.

### Regional Geological context:

The Nacimiento Formation is of Paleocene age (Baltz, 1967, p. 35). It crops out in a broad band inside the southern and western margins of the central basin and in a narrow band along the west face of the Nacimiento Uplift. The Nacimiento is a nonresistant unit and typically erodes to low, rounded hills or forms badland topography.

The Nacimiento Formation occurs in approximately only the southern two-thirds of the San Juan Basin where it conformably overlies and intertongues with the Ojo Alamo Sandstone (Fassett, 1974, p. 229). The Nacimiento Formation grades laterally into the main part of the Animas Formation (Fassett and Hinds, 1971, p. 34); thus, in this area, the two formations occupy the same stratigraphic interval.

Strata of the Nacimiento Formation were deposited in lakebeds in the central basin area with lesser deposition in stream channels (Brimhall, 1973, p. 201). In general, the Nacimiento consists of drab, interbedded black and gray shale with discontinuous, white, medium- to very coarse grained arkosic sandstone (Stone et al., 1983, p.30). Stone et al. indicated that the formation may contain more sandstone than commonly reported because some investigators assume the slope-forming strata in the unit area shales, whereas in many places the strata actually are poorly consolidated sandstones.

Total thickness of the Nacimiento Formation ranges from about 500 to 1,300 feet. The unit generally thickens from the basin margins toward the basin center (Steven et al., 1974). The sandstone deposits within the Nacimiento Formation are much thinner than the total thickness of the formation because their environment of deposition was localized stream channels (Brimhall, 1973, p. 201). The thickness of the combined San Jose, Animas, and Nacimiento Formations ranges from 500 to more than 3,500 feet.

#### Hydraulic Properties:

Reported well yields for 53 wells completed in either the Animas or Nacimiento Formations range from 2 to 90 gallons per minute and the median yield is 7.5 gallons per minute. The primary use of water from Nacimiento and Animas Formations is domestic and livestock supplies. There are no known aquifer tests for the Animas or Nacimiento Formations, but specific capacities reported for six wells range from 0.24 to 2.30 gallons per minute per foot of drawdown (Levings et al., 1990).

The Animas and Nacimiento Formations are in many ways hydrologically similar to the San Jose Formation because sands in both units produce approximately the same quantities of water. However, the greater percentage of fine materials in the Animas and Nacimiento Formations may restrict downward vertical leakage to the Ojo Alamo Sandstone or Kirtland Shale. The poorly cemented fine material is highly erodible, forms a badland terrain, and supports only spotty vegetation. These conditions are more conducive to runoff than retention of precipitation.

#### References:

- Baltz, E.H., 1967, Stratigraphy and regional tectonic implications of part of Upper Cretaceous rocks, east-central San Juan Basin, New Mexico: USGS Professional Paper 552, 101 p.
- Brimhall, R.M., 1973, Ground-water hydrology of Tertiary rocks of the San Juan Basin, New Mexico, in Fassett, J.E., ed., Cretaceous and Tertiary rocks of the Southern Colorado Plateau: Four Corners Geological Society Memoir, p. 197-207.
- Fassett, J.E., 1974, Cretaceous and Tertiary rocks of the eastern San Juan Basin, New Mexico and Colorado, in Guidebook of Ghost Ranch, central-northern New Mexico: New Mexico Geological Society, 25th Field Conference, p. 225-230.
- Fassett, J.E., and Hinds, J.S., 1971, Geology and fuel resources of the Fruitland Formation and Kirtland Shale of the San Juan Basin, New Mexico and Colorado: USGS Professional Paper 676, 76 p.
- Levings, G.W., Craig, S.d., Dam, W.L., Kernodle, J.M., and Thorn, C.R., 1990, Hydrogeology of the San Jose, Nacimiento, and Animas Formations in the San Juan structural basin, New Mexico, Colorado, Arizona, and Utah: USGS Hydrologic Investigations Atlas HA-720-A, 2 sheets.
- Stone, W.J., Lyford, F.P., Frenzel, P.F., Mizell, N.H., and Padgett, E.T., 1983, Hydrogeology and water resources of San Juan Basin, New Mexico: New Mexico Bureau of Mines and Mineral Resources, Hydrologic Report 6.



**ConocoPhillips Company  
San Juan Basin  
Below Grade Tank Design and Construction**

In accordance with NMAC 19.15.17 the following information describes the design and construction of below grade tanks on ConocoPhillips Company (COPC) locations. This is COPC's standard procedure for all below grade tanks (BGT). A separate plan will be submitted for any BGT which does not conform to this plan.

**General Plan:**

1. COPC will design and construct a properly sized and approved BGT which will contain liquids and should prevent contamination of fresh water to protect the public health and environment.
2. COPC signage will comply with 19.15.3.103 NMAC when COPC is the operator. If COPC is not the operator it will comply with 19.15.17.11NMAC. COPC includes Emergency Contact information on all signage.
3. COPC has approval to use alternative fencing that provides better protection. COPC constructs fencing around the BGT using 4 foot hog wire fencing topped with two strands of barbed wire, or with a pipe top rail. A six foot chain link fence topped with three strands of barbed wire will be use if the well location is within 1000 feet of permanent residence, school, hospital, institution or church. COPC ensures that all gates associated with the fence are closed and locked when responsible personnel are not onsite.
4. COPC will construct a screened, expanded metal covering, on the top of the BGT.
5. COPC shall ensure that a below-grade tank is constructed of materials resistant to the below-grade tank's particular contents and resistant to damage from sunlight as shown on design drawing and specification sheet.
6. The COPC below-grade tank system shall have a properly constructed foundation consisting of a level base free of rocks, debris, sharp edges or irregularities to prevent punctures, cracks or indentations of the liner or tank bottom as shown on design drawing.
7. COPC shall operate and install the below-grade tank to prevent the collection of surface water run-on. COPC has built in shut off devices that do not allow a below-grade tank to overflow. COPC constructs berms and corrugated retaining walls at least 6" above ground to keep from surface water run-on entering the below grade tank as shown on the design plan.
8. COPC will construct and use a below-grade tank that does not have double walls. The below-grade tank's side walls will be open for visual inspection for leaks, the below-grade tank's bottom is elevated a minimum of six inches above the underlying ground surface and the below-grade tank is underlain with a geomembrane liner to divert leaked liquid to a location that can be visually inspected.



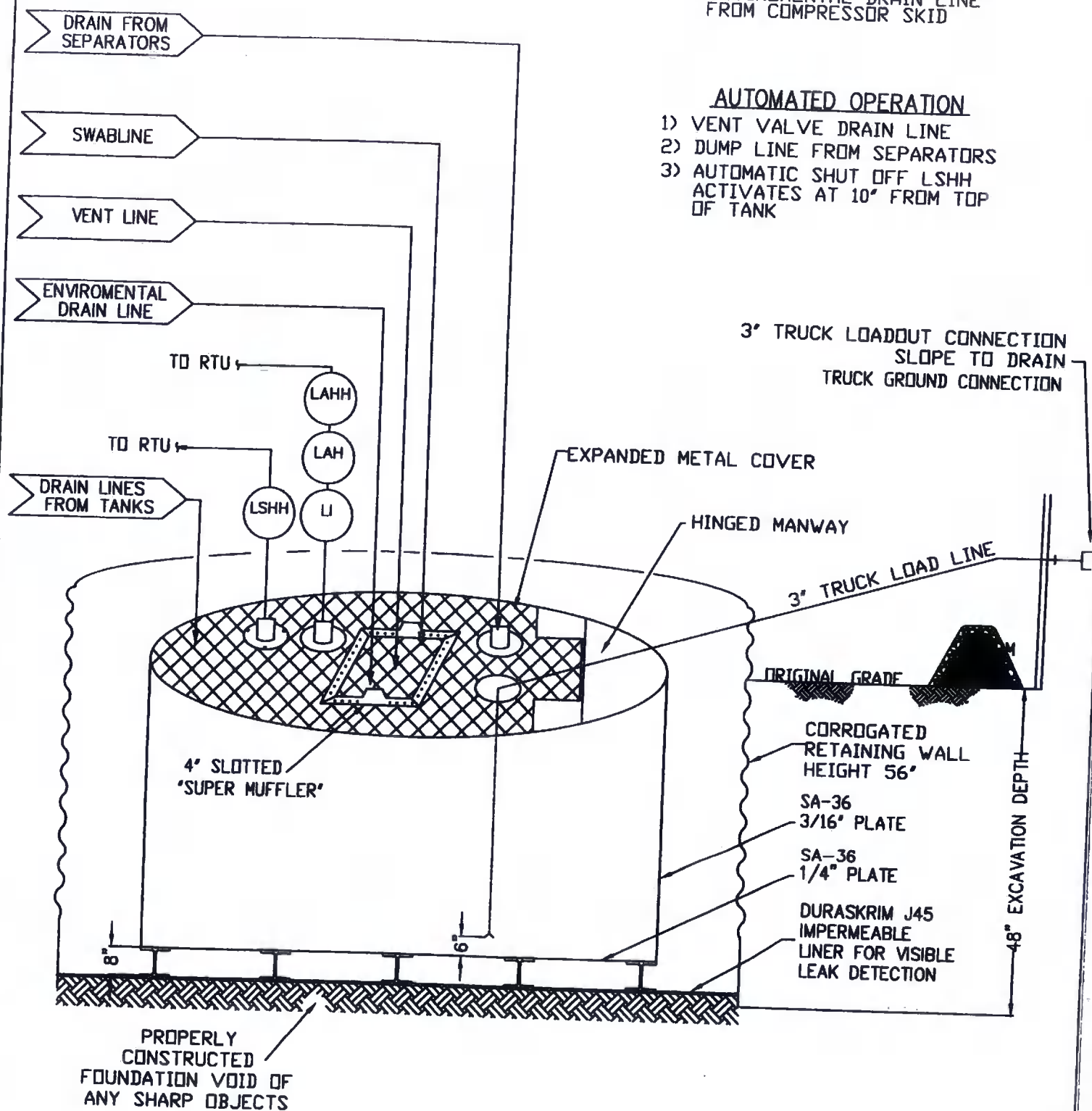
9. COPC has equipped the below-grade tanks with the ability to detect high level in the tank and provide alarm notification and shutdown process streams into the tank. Once high level is detected RTU logic closes the inlet separator sales valve and does not permit vent valve to open. This shutdown of the sales valve and gagging of the vent valves prevents any hydrocarbon process streams from entering the pit tank once a high level is detected. Furthermore, an electronic page is sent to the COPC MSO for that well site and to the designated contract "Water-Hauling" Company indicating a high level and that action must be taken to address this alarm. The environmental drain line from COPC's compressor skid under normal operating conditions is in the open position. The environmental drain line is in place to capture any collected rain water or spilled lubricants from our compressor skids. The swab drain line is a manually operated drain and by normal operating procedures is in the closed position. The tank drain line is also a manually operated drain and during normal operations it is in the closed position.
10. The geomembrane liner consists of a 45-mil flexible LLDPE material manufactured by Raven Industries as J45BB. This product is a four layer reinforced laminated containing no adhesives. The outer layers consist of a high strength polyethylene film manufactured using virgin grade resins and stabilizers for UV resistance in exposed applications. The J45BB is reinforced with 1300 denier (minimum) tri-directional scrim reinforcement. It exceeds ASTM D3083 standard by 10%. J45BB has a warranty for 20 years from Raven Industries and is attached. It is typically used in Brine Pond, Oilfield Pit liner and other industrial applications. The manufacture specific sheet is attached and the design attached displays the proper installation of the liner.
11. The general specification for design and construction are attached in the COPC document.

## MANUAL OPERATION

- 1) PRODUCTION TANKS DRAINLINE
- 2) SWABLINE DRAIN LINE
- 3) ENVIROMENTAL DRAIN LINE FROM COMPRESSOR SKID

## AUTOMATED OPERATION

- 1) VENT VALVE DRAIN LINE
- 2) DUMP LINE FROM SEPARATORS
- 3) AUTOMATIC SHUT OFF LSHH ACTIVATES AT 10" FROM TOP OF TANK



**ConocoPhillips**

San Juan Business Unit

**PRODUCED WATER PIT TANK**  
 OPEN TOP GRAVITY FLOW TANK  
 INTERNALLY COATED WITH  
 12-14 MILS AMERON AMERCOAT 385

# DURA-SKRIM®

# J30, J36 & J45

PROPERTIES	TEST METHOD	J30BB		J36BB		J45BB	
		Min. Roll Averages	Typical Roll Averages	Min. Roll Averages	Typical Roll Averages	Min. Roll Averages	Typical Roll Averages
Appearance		Black/Black		Black/Black		Black/Black	
Thickness	ASTM D 5199	27 mil	30 mil	32 mil	36 mil	40 mil	45 mil
Weight Lbs Per MSF (oz/yd²)	ASTM D 5261	126 lbs (18.14)	140 lbs (20.16)	151 lbs (21.74)	168 lbs (24.19)	189 lbs (27.21)	210 lbs (30.24)
Construction		**Extrusion laminated with encapsulated tri-directional scrim reinforcement					
Ply Adhesion	ASTM D 413	16 lbs	20 lbs	19 lbs	24 lbs	25 lbs	31 lbs
1" Tensile Strength	ASTM D 7003	88 lbf MD 63 lbf DD	110 lbf MD 79 lbf DD	90 lbf MD 70 lbf DD	113 lbf MD 87 lbf DD	110 lbf MD 84 lbf DD	138 lbf MD 105 lbf DD
1" Tensile Elongation @ Break % (Film Break)	ASTM D 7003	550 MD 550 DD	750 MD 750 DD	550 MD 550 DD	750 MD 750 DD	550 MD 550 DD	750 MD 750 DD
1" Tensile Elongation @ Peak % (Scrim Break)	ASTM D 7003	20 MD 20 DD	33 MD 33 DD	20 MD 20 DD	30 MD 31DD	20 MD 20 DD	36 MD 36 DD
Tongue Tear Strength	ASTM D 5884	75 lbf MD 75 lbf DD	97 lbf MD 90 lbf DD	75 lbf MD 75 lbf DD	104 lbf MD 92 lbf DD	100 lbf MD 100 lbf DD	117 lbf MD 118 lbf DD
Grab Tensile	ASTM D 7004	180 lbf MD 180 lbf DD	218 lbf MD 210 lbf DD	180 lbf MD 180 lbf DD	222 lbf MD 223 lbf DD	220 lbf MD 220 lbf DD	257 lbf MD 258 lbf DD
Trapezoid Tear	ASTM D 4533	120 lbf MD 120 lbf DD	146 lbf MD 141 lbf DD	130 lbf MD 130 lbf DD	189 lbf MD 172 lbf DD	160 lbf MD 160 lbf DD	193 lbf MD 191 lbf DD
* Dimensional Stability	ASTM D 1204	<1	<0.5	<1	<0.5	<1	<0.5
Puncture Resistance	ASTM D 4833	50 lbf	64 lbf	65 lbf	83 lbf	80 lbf	99 lbf
Maximum Use Temperature		180° F	180° F	180° F	180° F	180° F	180° F
Minimum Use Temperature		-70° F	-70° F	-70° F	-70° F	-70° F	-70° F

MD = Machine Direction  
DD = Diagonal Directions



Note: Minimum Roll Averages are set to take into account product variability in addition to testing variability between laboratories.

\*Dimensional Stability Maximum Value

\*\*DURA-SKRIM J30BB, J36BB & J45BB are a four layer reinforced laminate containing no adhesives. The outer layers consist of a high strength polyethylene film manufactured using virgin grade resins and stabilizers for UV resistance in exposed applications. DURA-SKRIM J30BB, J36BB & J45BB are reinforced with a 1300 denier (minimum) tri-directional scrim reinforcement.

Note: RAVEN INDUSTRIES MAKES NO WARRANTIES AS TO THE FITNESS FOR A SPECIFIC USE OR MERCHANTABILITY OF PRODUCTS REFERRED TO, no guarantee of satisfactory results from reliance upon contained information or recommendations and disclaims all liability for resulting loss or damage.

## PLANT LOCATION

Sioux Falls, South Dakota

## SALES OFFICE

P.O. Box 5107  
Sioux Falls, SD 57117-5107  
(605) 335-0174  
(605) 331-0333 FAX  
**800-635-3456**

**RAVEN**  
INDUSTRIES



## RAVEN INDUSTRIES INC. EXPOSED GEOMEMBRANE LIMITED WARRANTY

Raven Industries Inc. warrants Dura-Skrim J30BB, J36BB, and J45BB to be free from manufacturing defects and to be able to withstand normal exposure to sunlight for a period of 20 years from the date of sale for normal use in approved applications in the U.S and Canada, excluding Hawaii. This warranty is effective for products sold and shipped from January 1, 2008 to December 31, 2008. These dates will be updated prior to December 31, 2008.

This Limited Warranty does not include damages or defects in the Raven geomembrane resulting from acts of God, casualty or catastrophe including but not limited to: earthquakes, floods, piercing hail, or tornadoes. The term "normal use" as used herein does not include, among other things improper handling during transportation, unloading, storage or installation, the exposure of Raven geomembranes to harmful chemicals, atypical atmospheric conditions, abuse of Raven geomembranes by machinery, equipment or people; improper site preparation or covering materials, excessive pressures or stresses from any source or improper application or installation. Raven geomembrane material warranty is intended for commercial use only and is not in effect for the consumer as defined in the Magnuson Moss Warranty or any similar federal, state, or local statutes. The parties expressly agree that the sale hereunder is for commercial or industrial use only.

Should defects or premature loss of use within the scope of the above Limited Warranty occur, Raven Industries Inc. will, at its option, repair or replace the Raven geomembrane on a pro-rata basis at the then current price in such manner as to charge the Purchaser/User only for that portion of the warranted life which has elapsed since purchase of the material. Raven Industries Inc. will have the right to inspect and determine the cause of any alleged defect in the Raven geomembrane and to take appropriate steps to repair or replace the Raven geomembrane if a defect exists which is covered under this warranty. This Limited Warranty extends only to Raven's geomembrane, and does not extend to the installation service of third parties nor does it extend to materials furnished or installed by others in connection with the intended use of the Raven geomembranes.

Any claim for any alleged breach of this warranty must be made in writing, by certified mail, to the General Manager of Engineered Films Division of Raven Industries Inc. within ten (10) days of becoming aware of the alleged defect. Should the required notice not be given, the defect and all warranties are waived by the Purchaser, and Purchaser shall not have any rights under this warranty. Raven Industries Inc. shall not be obligated to perform repairs or replacements under this warranty unless and until the area to be repaired or replaced is clean, dry, and unencumbered. This includes, but is not limited to, the area made available for repair and/or replacement of Raven geomembrane to be free from all water, dirt, sludge, residuals and liquids of any kind. If after inspection it is determined that there is no claim under this Limited Warranty, Purchaser shall reimburse Raven Industries Inc. for its costs associated with the site inspection.

In the event the exclusive remedy provided herein fails in its essential purpose, and in that event only, the Purchaser shall be entitled to a return of the purchase price for so much of the material as Raven Industries Inc. determines to have violated the warranty provided herein. Raven Industries Inc. shall not be liable for direct, indirect, special, consequential or incidental damages resulting from a breach of this warranty including, but not limited to, damages for loss of production, lost profits, personal injury or property damage. Raven Industries Inc. shall not be obligated to reimburse Purchaser for any repairs, replacement, modifications or alterations made by Purchaser unless Raven Industries Inc. specifically authorized, in writing, said repairs, replacements, modifications or alteration in advance of them having been made. Raven Industry's liability under this warranty shall in no event exceed the replacement cost of the material sold to the Purchaser for the particular installation in which it failed.

Raven Industries Inc. neither assumes nor authorizes any person other than the undersigned of Raven Industries Inc. to assume for it any other or additional liability in connection with the Raven geomembrane made on the basis of the Limited Warranty. The Limited Warranty on the Raven geomembrane herein is given in lieu of all other possible material warranties, either expressed or implied, and by accepting delivery of the material; Purchaser waives all other possible warranties, except those specifically given. This Limited Warranty may only be modified by written document mutually executed by Owner and Raven Industries Inc.

Limited Warranty is extended to the purchaser/owner and is non-transferable and non-assignable; i.e., there are no third-party beneficiaries to this warranty.

Purchaser acknowledges by acceptance that the Limited Warranty given herein is accepted in preference to any and other possible materials warranties.

THIS LIMITED WARRANTY SHALL BE GOVERNED BY SOUTH DAKOTA LAW AND VENUE FOR ALL LEGAL PROCEEDINGS IN CONNECTION WITH THIS LIMITED WARRANTY SHALL BE IN MINNEHAHA COUNTY, SOUTH DAKOTA. RAVEN INDUSTRIES INC. MAKES NO WARRANTY OF ANY KIND OTHER THAN THAT GIVEN ABOVE AND HEREBY DISCLAIMS ALL WARRANTIES, BOTH EXPRESSED OR IMPLIED, OF MERCHANTABILITY AND FITNESS FOR A PARTICULAR PURPOSE. THIS IS THE ONLY WARRANTY THAT APPLIES TO THE MATERIALS REFERRED TO HEREIN AND RAVEN INDUSTRIES INC. DISCLAIMS ANY LIABILITY FOR ANY WARRANTIES GIVEN BY ANY OTHER PERSON OR ENTITY, EITHER WRITTEN OR ORAL.

RAVEN INDUSTRIES' WARRANTY BECOMES AN OBLIGATION OF RAVEN INDUSTRIES INC. TO PERFORM UNDER THE WARRANTY ONLY UPON RECEIPT OF FINAL PAYMENT AND EXECUTION BY A DULY AUTHORIZED OFFICER OF RAVEN INDUSTRIES INC.



**ConocoPhillips Company  
San Juan Basin  
Below Grade Tank Maintenance and Operating Plan**

In accordance with Rule 19.15.17 the following information describes the operation and maintenance of Below Grade Tank (BGT) on ConocoPhillips Company (COPC) locations. This is COPC's standard procedure for all BGT. A separate plan will be submitted for any BGT which does not conform to this plan.

General Plan:

1. COPC will operate and maintain a BGT to contain liquids and solids and maintain the integrity of the liner, liner system and secondary containment system to prevent contamination of fresh water and protect public health and environment. COPC will accomplish this by performing an inspection on a monthly basis, installing cathodic protection, and automatic overflow shutoff devices as seen on the design plan.
2. COPC will not discharge into or store any hazardous waste in the BGT.
3. COPC shall operate and install the below-grade tank to prevent the collection of surface water run-on. COPC has built in shut off devices that do not allow a below-grade tank to overflow. COPC constructs berms and corrugated retaining walls at least 6" above ground to keep from surface water run-on entering the below grade tank as shown on the design plan.
4. As per 19.17.15.12 Subsection D, Paragraph 3, COPC will inspect the below-grade tank at least monthly reviewing several items which include 1) containment berms adequate and no oil present, 2) tanks had no visible leaks or sign of corrosion, 3) tank valves, flanges, and hatches had no visible leaks and 4) no evidence of significant spillage of produced liquids. In addition, COPC's multi-skilled operators (MSOs) are required to visit each well location once per week. If detected on either inspection, COPC shall remove any visible or measurable layer of oil from the fluid surface of a below-grade tank in an effort to prevent significant accumulation of oil overtime. The written record of the monthly inspections will include the items listed above and will be maintained for five years.
5. COPC shall require and maintain a 10" adequate freeboard to prevent overtopping of the below-grade tank.
6. If the below grade tank develops a leak, or if any penetration of the pit liner or below grade tank, occurs below the liquid's surface, then COPC shall remove all liquid above the damage or leak line within 48 hours. COPC shall notify the appropriate district office. COPC shall repair or replace the pit liner or below grade tank, within 48 hours of discovery. If the below grade tank or pit liner does not demonstrate integrity, COPC shall promptly remove and install a below grade tank or pit liner that complies with Subsection I of 19.15.17.11 NMAC. COPC shall notify the appropriate district office of a discovery of leaks less than 25 barrels as required pursuant to Subsection B of 19.15.3.116 NMAC shall be reported within twenty-four (24) hours of discovery of leaks greater than 25 barrels. In addition, immediate verbal notification pursuant to Subsection B, Paragraph (1), and Subparagraph (d) of 19.15.3.116 NMAC shall be reported to the division's Environmental Bureau Chief.

**ConocoPhillips Company  
San Juan Basin  
Below Grade Tank Closure Plan**

In accordance with Rule 19.15.17.13 NMAC the following information describes the closure requirements of Below Grade Tanks (BGTs) on ConocoPhillips Company locations hereinafter known as COPC locations. This is COPC's standard procedure for all BGTs. A separate plan will be submitted for any BGT which does not conform to this plan.

**General Requirements:**

1. COPC shall close a below-grade tank within the time periods provided in Subsection A of 19.15.17.13 NMAC. This will include a) below-grade tanks that do not meet the requirements of Paragraphs (1) through (4) of Subsection I of 19.15.17.11 NMAC or is not included in Paragraph (5) of Subsection I of 19.15.17.11 NMAC within five years, if not retrofitted to comply with Paragraphs (1) through (4) of Subsection I of 19.15.17.11 NMAC; b) permitted below-grade tanks within 60 days of cessation of the below-grade tank's operation., or c) an earlier date that the division requires because of imminent danger to fresh water, public health or the environment. For any closure, COPC will file the C144 Closure Report as required.
2. COPC shall remove liquids and sludge from a below-grade tank prior to implementing a closure method and shall dispose of the liquids and sludge in a division-approved facility. The facilities to be used will be Basin Disposal (Permit #NM-01-005) and Envirotech Land Farm (Permit #NM-01-011). The liner after being cleaned well (Subsection D, Paragraph 1, Subparagraph (m) of 19.15.9.712 NMAC) will be disposed of at the San Juan County Regional Landfill located on CR 3100.
3. COPC will receive prior approval to remove the below-grade tank and dispose of it in a division-approved facility or recycle, reuse, or reclaim it in a manner that the appropriate division district office approves. Documentation of how the below-grade tank was disposed of or recycled will be provided in the closure report.
4. If there is any on-site equipment associated with a below-grade tank, then COPC shall remove the equipment, unless the equipment is required for some other purpose.
5. COPC shall test the soils beneath the below-grade tank to determine whether a release has occurred. COPC shall collect, at a minimum, a five point, composite sample; collect individual grab samples from any area that is wet, discolored or showing other evidence of a release; and analyze for BTEX, TPH and chlorides to demonstrate that the benzene concentration, as determined by EPA SW-846 methods 8021B or 8260B or other EPA method that the division approves, does not exceed 0.2 mg/kg; total BTEX concentration, as determined by EPA SW-846 methods 8021B or 8260B or other EPA method that the division approves, does not exceed 50 mg/kg; the TPH concentration, as determined by EPA method 418.1 or other EPA method that the division approves, does not exceed 100 mg/kg; and the chloride concentration, as determined by EPA method 300.1 or other EPA method that the division approves, does not exceed 250 mg/kg, or the background concentration, whichever is greater. COPC shall notify the division of its results on form C-141.

6. If COPC or the division determines that a release has occurred, then COPC shall comply with 19.15.3.116 NMAC and 19.15.1.19 NMAC, as appropriate.
7. If the sampling program demonstrates that a release has not occurred or that any release does not exceed the concentrations specified in Paragraph (4) of Subsection E of 19.15.17.13 NMAC, then COPC shall backfill the excavation with compacted, non-waste containing, earthen material; construct a division-prescribed soil cover; recontour and re-vegetate the site.
8. Notice of Closure will be given prior to closure to the Aztec Division office between 72 hours and one week via email or verbally. The notification of closure will include the following:
  - i. Operator's name
  - ii. Location by Unit Letter, Section, Township, and Range. Well name and API number.
9. The surface owner shall be notified of COPC's closing of the below-grade tank prior to closure as per the approved closure plan via certified mail, return receipt requested.
10. Re-contouring of location will match fit, shape, line, form and texture of the surrounding. Re-shaping will include drainage control, prevent ponding, and prevent erosion. Natural drainages will be unimpeded and water bars and/or silt traps will be place in areas where needed to prevent erosion on a large scale. Final re-contour shall have a uniform appearance with smooth surface, fitting the natural landscape.
11. COPC shall seed the disturbed areas the first growing season after the operator closes the pit. Seeding will be accomplished via drilling on the contour whenever practical or by other division-approved methods. BLM stipulated seed mixes will used on federally jurisdictioned lands and division-approved seed mixtures (administratively approved if required) will be utilized on all State or private lands. Vegetative cover will equal 70% of the native perennial vegetative cover (un-impacted) consisting of at least three native plant species, including at least one grass, but not including noxious weeds, and maintain that cover through two successive growing seasons. If alternate seed mix is required by the state, private owner or tribe, it will be implemented with administrative approval if needed. COPC will repeat seeding or planting will be continued until successful vegetative growth occurs.
12. A minimum of four feet of cover shall be achieved and the cover shall include one foot of suitable material to establish vegetation at the site, or the background thickness of topsoil, whichever is greater.
13. All closure activities will include proper documentation and be available for review upon request and will be submitted to OCD within 60 days of closure of the below-grade tank. Closure report will be filed on C-144 and incorporate the following:
  - Soil Backfilling and Cover Installation
  - Re-vegetation application rates and seeding techniques
  - Photo documentation of the site reclamation
  - Confirmation Sampling Results
  - Proof of closure notice