



United States Department of the Interior

BUREAU OF LAND MANAGEMENT
Wyoming State Office Reservoir Management Group
2987 Prospector Drive
Casper, Wyoming 82604-2968



In Reply Refer To:
3186
(3186.1)
Poker Lake Unit
NMNM71016X

30-015-39166

DEC 10 2019 10:08:39

DEC 05 2019

XTO Energy, Inc.
Attn: Blake Hueske
Land Dept. Loc. 115 (W4.4A.495)
22777 Springwoods Village Pkway
Spring, TX 77389-1425

Re: Initial Delaware Formation Participating Area "H"
Poker Lake Unit
Eddy County, New Mexico

Gentlemen:

The Initial Delaware Formation Participating Area "H" is hereby approved effective as of November 22, 2011, pursuant to Section 11 of the Poker Lake Unit Agreement, Eddy County, New Mexico. This participating area has been designated NMNM71016AG.

The application establishes an Initial Delaware Formation Participating Area "H" of 280.00 acres and is based upon the completion of unit well 315H, located in the SW $\frac{1}{4}$ NW $\frac{1}{4}$ (SHL) of Section 13, T.24S., R.30E., (the SHL is located outside of the Poker Lake Unit boundary) and in the SW $\frac{1}{4}$ NW $\frac{1}{4}$ (BHL) of Section 11, T.24S., R.30E., unit tract No. 45, Lease No. NMLC068905, with an initial potential of 583 BOPD and 549 MCFPD on November 22, 2011, from the Delaware Formation.

Copies of the approved request are being distributed to the appropriate agencies and one copy of Exhibits "A" and "B" is returned herewith. Please advise all interested parties of the approval of the Initial Delaware Formation Participating Area "H" effective as of November 22, 2011.

Any production royalties that are due must be reported and paid within 30 days of the Bureau of Land Management's approval date or the payors will be assessed interest for late payment under the Federal Oil and Gas Royalty Management Act of 1982 (30 CFR 218.54). If you need assistance or clarification, please contact the Office of Natural Resources Revenue (ONRR) at 1-800-525-9167 or 303-231-3856.

If you have any questions, please call the undersigned at (307) 261-7685.

Sincerely,

/S/ J. David Chase

J. David Chase
Chief, Reservoir Management Group

1 Enclosure

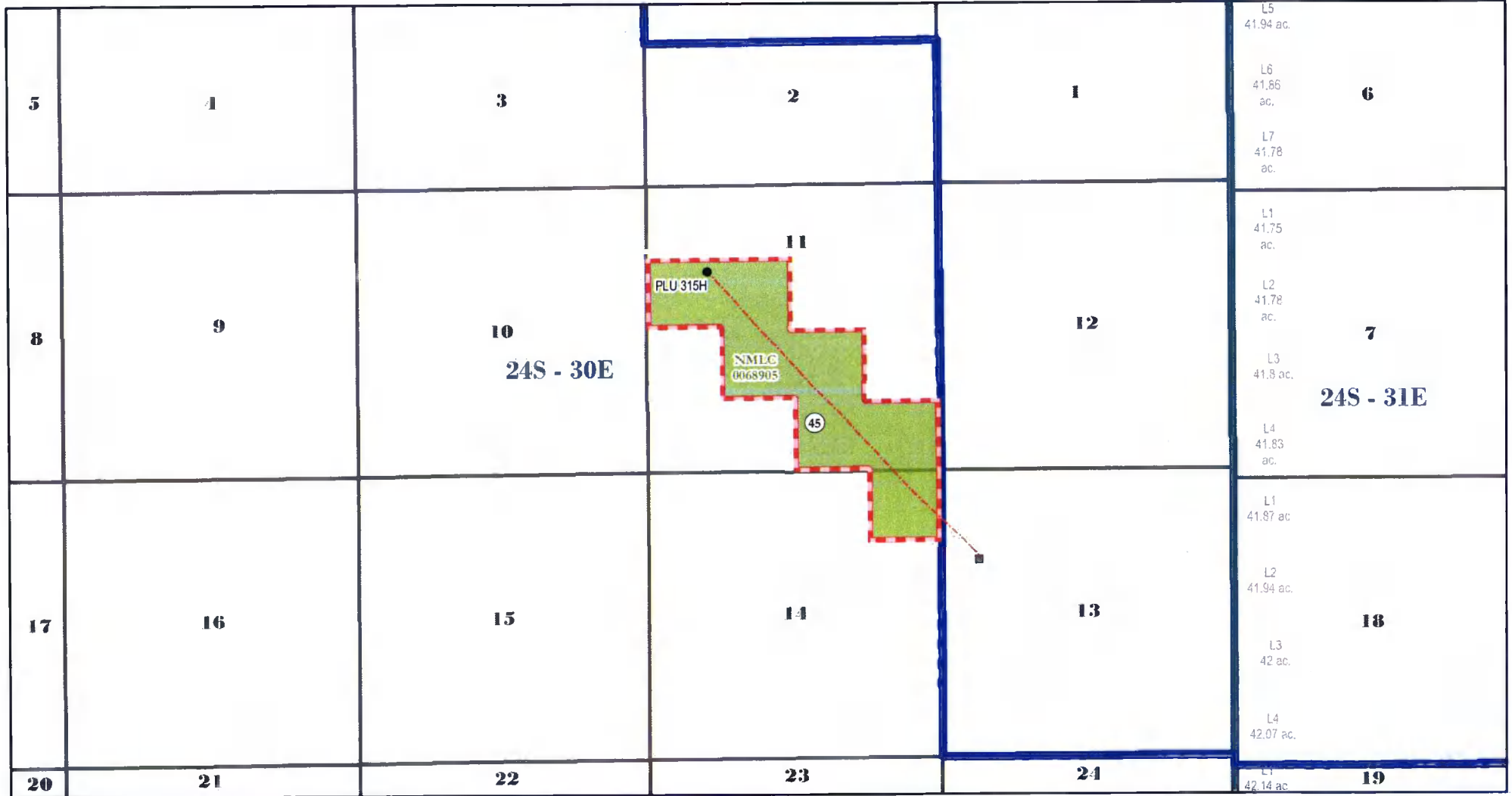
Encl. 1 - Exhibits "A" and "B"

cc: NMSO, James Glover w/exhibits A & B
ONRR-RRM (email: leases.blm@onrr.gov) w/exhibits A & B
New Mexico State Land Office, Scott Dawson w/exhibits A & B
New Mexico Oil Conservation Division, William Jones w/exhibits A & B



EXHIBIT "A"
INITIAL DELAWARE PARTICIPATING AREA "H"
315H , POKER LAKE UNIT
EDDY COUNTY, NM
EFFECTIVE NOVEMBER 22, 2011

Date: 12/2/2019



- POKER LAKE UNIT
- CAPABLE WELL (BHL)
- CAPABLE WELL (SHL)
- CAPABLE WELLBORE
- PROPOSED DELAWARE PA "H"
- FEDERAL ACREAGE WITHIN PA

RECEIVED 12/04/19 11:25 AM BLM WIND-COOPER FIELD OFFICE

EXHIBIT "B"

SCHEDULE OF LANDS AND TRACT PARTICIPATION
INITIAL DELWARE FORMATION PARTICIPATING AREA "H"

POKER LAKE UNIT

EDDY COUNTY, NEW MEXICO

EFFECTIVE NOVEMBER 22, 2011

Tract No.	Lease No.	Description	Acres	Participation
45	NMLC068905	Township 24 South - Range 30 East, N.M.P.M.	280.00	100.0000%
	Federal	Section 11: S/2NW/4; NE/4SW/4; W/2SE/4; SE/4SE/4 Section 14: NE/4NE4		
Totals:			280.00	100.0000%

TYPE OF LAND	COMMITTED ACRES	NON-COMMITTED ACRES	PERCENT
FEDERAL	280.00	0.00	100.0000%
STATE	0.00	0.00	0.0000%
PATENTED	0.00	0.00	0.0000%
TOTAL	280.00	0.00	100.0000%

RECEIVED 12/04/10 11:05 AM BLM WIND/COOPER FIELD OFFICE