

District I
1625 N. French Dr., Hobbs, NM 88240
District II
1301 W. Grand Avenue, Artesia, NM 88210
District III
1050 Rio Brazos Road, Aztec, NM 87410
District IV
1220 S. St. Francis Dr., Santa Fe, NM 87505

State of New Mexico
Energy Minerals and Natural Resources
Department
Oil Conservation Division
1220 South St. Francis Dr.
Santa Fe, NM 87505

Form C-144
July 21, 2008

For temporary pits, closed-loop systems, and below-grade tanks, submit to the appropriate NMOCD District Office.
For permanent pits and exceptions submit to the Santa Fe Environmental Bureau office and provide a copy to the appropriate NMOCD District Office.

**Pit, Closed-Loop System, Below-Grade Tank, or
Proposed Alternative Method Permit or Closure Plan Application**

Type of action: ☒ Permit of a pit, closed-loop system, below-grade tank, or proposed alternative method
☐ Closure of a pit, closed-loop system, below-grade tank, or proposed alternative method
☐ Modification to an existing permit
☐ Closure plan only submitted for an existing permitted or non-permitted pit, closed-loop system, below-grade tank, or proposed alternative method

Instructions: Please submit one application (Form C-144) per individual pit, closed-loop system, below-grade tank or alternative request

Please be advised that approval of this request does not relieve the operator of liability should operations result in pollution of surface water, ground water or the environment. Nor does approval relieve the operator of its responsibility to comply with any other applicable governmental authority's rules, regulations or ordinances.

1.
Operator: Chevron Midcontinent, LP OGRID #: 241333
Address: P.O. Box 36366 Houston, TX 77236
Facility or well name: MONTOYA B 2 #035
API Number: 30-045-28775 OCD Permit Number: _____
U/L or Qtr/Qtr Qtr/Qtr B Section 35 Township 32 N Range 13W County: San Juan
Center of Proposed Design: Latitude 36.948266° Longitude 108.169825° NAD: ☐ 1927 ☐ 1983
Surface Owner: ☒ Federal ☐ State ☐ Private ☐ Tribal Trust or Indian Allotment

2.
☐ **Pit:** Subsection F or G of 19.15.17.11 NMAC
Temporary: ☐ Drilling ☐ Workover
☐ Permanent ☐ Emergency ☐ Cavitation ☐ P&A
☐ Lined ☐ Unlined Liner type: Thickness _____ mil ☐ LLDPE ☐ HDPE ☐ PVC ☐ Other _____
☐ String-Reinforced
Liner Seams: ☐ Welded ☐ Factory ☐ Other _____ Volume: _____ bbl Dimensions: L _____ x W _____ x D _____

3.
☐ **Closed-loop System:** Subsection H of 19.15.17.11 NMAC
Type of Operation: ☐ P&A ☐ Drilling a new well ☐ Workover or Drilling (Applies to activities which require prior approval of a permit or notice of intent)
☐ Drying Pad ☐ Above Ground Steel Tanks ☐ Haul-off Bins ☐ Other _____
☐ Lined ☐ Unlined Liner type: Thickness _____ mil ☐ LLDPE ☐ HDPE ☐ PVC ☐ Other _____
Liner Seams: ☐ Welded ☐ Factory ☐ Other _____

4.
☒ **Below-grade tank:** Subsection I of 19.15.17.11 NMAC
Volume: 95bbl bbl Type of fluid: Produced Water
Tank Construction material: Steel
☒ Secondary containment with leak detection ☐ Visible sidewalls, liner, 6-inch lift and automatic overflow shut-off
☐ Visible sidewalls and liner ☐ Visible sidewalls only ☐ Other _____
Liner type: Thickness _____ mil ☐ HDPE ☐ PVC ☐ Other _____

5.
☐ **Alternative Method:**
Submittal of an exception request is required. Exceptions must be submitted to the Santa Fe Environmental Bureau office for consideration of approval.

6.

Fencing: Subsection D of 19.15.17.11 NMAC (*Applies to permanent pits, temporary pits, and below-grade tanks*)

- ☐ Chain link, six feet in height, two strands of barbed wire at top (*Required if located within 1000 feet of a permanent residence, school, hospital, institution or church*)
- ☐ Four foot height, four strands of barbed wire evenly spaced between one and four feet
- ☒ Alternate. Please specify Four foot steel frame with steal wire mesh.

7.

Netting: Subsection E of 19.15.17.11 NMAC (*Applies to permanent pits and permanent open top tanks*)

- ☒ Screen ☐ Netting ☐ Other _____
- ☐ Monthly inspections (If netting or screening is not physically feasible)

8.

Signs: Subsection C of 19.15.17.11 NMAC

- ☐ 12"x 24", 2" lettering, providing Operator's name, site location, and emergency telephone numbers
- ☒ Signed in compliance with 19.15.3.103 NMAC

9.

Administrative Approvals and Exceptions:

Justifications and/or demonstrations of equivalency are required. Please refer to 19.15.17 NMAC for guidance.

Please check a box if one or more of the following is requested, if not leave blank:

- ☒ Administrative approval(s): Requests must be submitted to the appropriate division district or the Santa Fe Environmental Bureau office for consideration of approval.
- ☐ Exception(s): Requests must be submitted to the Santa Fe Environmental Bureau office for consideration of approval.

10.

Siting Criteria (regarding permitting): 19.15.17.10 NMAC

Instructions: The applicant must demonstrate compliance for each siting criteria below in the application. Recommendations of acceptable source material are provided below. Requests regarding changes to certain siting criteria may require administrative approval from the appropriate district office or may be considered an exception which must be submitted to the Santa Fe Environmental Bureau office for consideration of approval. Applicant must attach justification for request. Please refer to 19.15.17.10 NMAC for guidance. Siting criteria does not apply to drying pads or above-grade tanks associated with a closed-loop system.

Ground water is less than 50 feet below the bottom of the temporary pit, permanent pit, or below-grade tank.

- Please reference hydrogeologic report and printout from iWATERS database.

☒ Yes ☐ No

Within 300 feet of a continuously flowing watercourse, or 200 feet of any other significant watercourse or lakebed, sinkhole, or playa lake (measured from the ordinary high-water mark).

- Please reference the attached topographic map with distance rings. In addition, a field visit was conducted by Envirotech in July 2008 certifying that, at the time, there were no watercourses within the distance specified above.

☐ Yes ☒ No

Within 300 feet from a permanent residence, school, hospital, institution, or church in existence at the time of initial application.

(Applies to temporary, emergency, or cavitation pits and below-grade tanks)

- Please reference the attached aerial photo. In addition, a field visit was conducted by Envirotech in July 2008 certifying that, at the time, there were no referenced buildings within the distance specified above.

☐ Yes ☒ No
☐ NA

Within 1000 feet from a permanent residence, school, hospital, institution, or church in existence at the time of initial application.

(Applies to permanent pits)

- Please reference the attached aerial photo. In addition, a field visit was conducted by Envirotech in July 2008 certifying that, at the time, there were no referenced buildings within the distance specified above.

☐ Yes ☐ No
☒ NA

Within 500 horizontal feet of a private, domestic fresh water well or spring that less than five households use for domestic or stock watering purposes, or within 1000 horizontal feet of any other fresh water well or spring, in existence at the time of initial application.

- Please reference the attached iWATERS printout. In addition, a field visit was conducted by Envirotech in July 2008 certifying that, at the time, there were no wells or springs within the distances specified above.

☐ Yes ☒ No

Within incorporated municipal boundaries or within a defined municipal fresh water well field covered under a municipal ordinance adopted pursuant to NMSA 1978, Section 3-27-3, as amended.

The site is not within any known incorporated municipal boundaries, please reference the attached topographic map.

☐ Yes ☒ No

☐ Yes ☒ No

Within 500 feet of a wetland.

- Please reference the attached topographic map with distance rings. In addition, a field visit was conducted by Envirotech in July 2008 certifying that, at the time, there were no wetlands within the distance specified above

☐ Yes ☒ No

Within the area overlying a subsurface mine.

- Please reference the attached topographic map

☐ Yes ☒ No

Within an unstable area.

- Please reference the attached topographic map which includes FEMA flood map data. The map indicates the well site is outside of any known 100 year floodplains.

☐ Yes ☒ No

Within a 100-year floodplain.

- FEMA map

11.

Temporary Pits, Emergency Pits, and Below-grade Tanks Permit Application Attachment Checklist: Subsection B of 19.15.17.9 NMAC**Instructions:** Each of the following items must be attached to the application. Please indicate, by a check mark in the box, that the documents are attached.

- ☒ Hydrogeologic Report (Below-grade Tanks) - based upon the requirements of Paragraph (4) of Subsection B of 19.15.17.9 NMAC
- ☐ Hydrogeologic Data (Temporary and Emergency Pits) - based upon the requirements of Paragraph (2) of Subsection B of 19.15.17.9 NMAC
- ☒ Siting Criteria Compliance Demonstrations - based upon the appropriate requirements of 19.15.17.10 NMAC
- ☒ Design Plan - based upon the appropriate requirements of 19.15.17.11 NMAC
- ☒ Operating and Maintenance Plan - based upon the appropriate requirements of 19.15.17.12 NMAC
- ☒ Closure Plan (Please complete Boxes 14 through 18, if applicable) - based upon the appropriate requirements of Subsection C of 19.15.17.9 NMAC and 19.15.17.13 NMAC

☐ Previously Approved Design (attach copy of design) API Number: _____ or Permit Number: _____

12.

Closed-loop Systems Permit Application Attachment Checklist: Subsection B of 19.15.17.9 NMAC**Instructions:** Each of the following items must be attached to the application. Please indicate, by a check mark in the box, that the documents are attached.

- ☐ Geologic and Hydrogeologic Data (only for on-site closure) - based upon the requirements of Paragraph (3) of Subsection B of 19.15.17.9
- ☐ Siting Criteria Compliance Demonstrations (only for on-site closure) - based upon the appropriate requirements of 19.15.17.10 NMAC
- ☐ Design Plan - based upon the appropriate requirements of 19.15.17.11 NMAC
- ☐ Operating and Maintenance Plan - based upon the appropriate requirements of 19.15.17.12 NMAC
- ☐ Closure Plan (Please complete Boxes 14 through 18, if applicable) - based upon the appropriate requirements of Subsection C of 19.15.17.9 NMAC and 19.15.17.13 NMAC

☐ Previously Approved Design (attach copy of design) API Number: _____

☐ Previously Approved Operating and Maintenance Plan API Number: _____ (Applies only to closed-loop system that use above ground steel tanks or haul-off bins and propose to implement waste removal for closure)

13.

Permanent Pits Permit Application Checklist: Subsection B of 19.15.17.9 NMAC**Instructions:** Each of the following items must be attached to the application. Please indicate, by a check mark in the box, that the documents are attached.

- ☐ Hydrogeologic Report - based upon the requirements of Paragraph (1) of Subsection B of 19.15.17.9 NMAC
- ☐ Siting Criteria Compliance Demonstrations - based upon the appropriate requirements of 19.15.17.10 NMAC
- ☐ Climatological Factors Assessment
- ☐ Certified Engineering Design Plans - based upon the appropriate requirements of 19.15.17.11 NMAC
- ☐ Dike Protection and Structural Integrity Design - based upon the appropriate requirements of 19.15.17.11 NMAC
- ☐ Leak Detection Design - based upon the appropriate requirements of 19.15.17.11 NMAC
- ☐ Liner Specifications and Compatibility Assessment - based upon the appropriate requirements of 19.15.17.11 NMAC
- ☐ Quality Control/Quality Assurance Construction and Installation Plan
- ☐ Operating and Maintenance Plan - based upon the appropriate requirements of 19.15.17.12 NMAC
- ☐ Freeboard and Overtopping Prevention Plan - based upon the appropriate requirements of 19.15.17.11 NMAC
- ☐ Nuisance or Hazardous Odors, including H₂S, Prevention Plan
- ☐ Emergency Response Plan
- ☐ Oil Field Waste Stream Characterization
- ☐ Monitoring and Inspection Plan
- ☐ Erosion Control Plan
- ☐ Closure Plan - based upon the appropriate requirements of Subsection C of 19.15.17.9 NMAC and 19.15.17.13 NMAC

14.

Proposed Closure: 19.15.17.13 NMAC**Instructions:** Please complete the applicable boxes, Boxes 14 through 18, in regards to the proposed closure plan.

Type: ☐ Drilling ☐ Workover ☐ Emergency ☐ Cavitation ☐ P&A ☐ Permanent Pit ☒ Below-grade Tank ☐ Closed-loop System

☐ Alternative

Proposed Closure Method: ☒ Waste Excavation and Removal

☐ Waste Removal (Closed-loop systems only)

☐ On-site Closure Method (Only for temporary pits and closed-loop systems)

☐ In-place Burial ☐ On-site Trench Burial

☐ Alternative Closure Method (Exceptions must be submitted to the Santa Fe Environmental Bureau for consideration)

15.

Waste Excavation and Removal Closure Plan Checklist: (19.15.17.13 NMAC) **Instructions:** Each of the following items must be attached to the closure plan. Please indicate, by a check mark in the box, that the documents are attached.

- ☒ Protocols and Procedures - based upon the appropriate requirements of 19.15.17.13 NMAC
- ☒ Confirmation Sampling Plan (if applicable) - based upon the appropriate requirements of Subsection F of 19.15.17.13 NMAC
- ☒ Disposal Facility Name and Permit Number (for liquids, drilling fluids and drill cuttings)
- ☒ Soil Backfill and Cover Design Specifications - based upon the appropriate requirements of Subsection H of 19.15.17.13 NMAC
- ☒ Re-vegetation Plan - based upon the appropriate requirements of Subsection I of 19.15.17.13 NMAC
- ☒ Site Reclamation Plan - based upon the appropriate requirements of Subsection G of 19.15.17.13 NMAC

16.

Waste Removal Closure For Closed-loop Systems That Utilize Above Ground Steel Tanks or Haul-off Bins Only: (19.15.17.13.D NMAC)

Instructions: Please indentify the facility or facilities for the disposal of liquids, drilling fluids and drill cuttings. Use attachment if more than two facilities are required.

Disposal Facility Name: _____ Disposal Facility Permit Number: _____

Disposal Facility Name: _____ Disposal Facility Permit Number: _____

Will any of the proposed closed-loop system operations and associated activities occur on or in areas that *will not* be used for future service and operations?

☐ Yes (If yes, please provide the information below) ☐ No

Required for impacted areas which will not be used for future service and operations:

☐ Soil Backfill and Cover Design Specifications - based upon the appropriate requirements of Subsection H of 19.15.17.13 NMAC

☐ Re-vegetation Plan - based upon the appropriate requirements of Subsection I of 19.15.17.13 NMAC

☐ Site Reclamation Plan - based upon the appropriate requirements of Subsection G of 19.15.17.13 NMAC

17.

Siting Criteria (regarding on-site closure methods only): 19.15.17.10 NMAC

Instructions: Each siting criteria requires a demonstration of compliance in the closure plan. Recommendations of acceptable source material are provided below. Requests regarding changes to certain siting criteria may require administrative approval from the appropriate district office or may be considered an exception which must be submitted to the Santa Fe Environmental Bureau office for consideration of approval. Justifications and/or demonstrations of equivalency are required. Please refer to 19.15.17.10 NMAC for guidance.

Ground water is less than 50 feet below the bottom of the buried waste.

- NM Office of the State Engineer - iWATERS database search; USGS; Data obtained from nearby wells

☐ Yes ☐ No
☐ NA

Ground water is between 50 and 100 feet below the bottom of the buried waste

- NM Office of the State Engineer - iWATERS database search; USGS; Data obtained from nearby wells

☐ Yes ☐ No
☐ NA

Ground water is more than 100 feet below the bottom of the buried waste.

- NM Office of the State Engineer - iWATERS database search; USGS; Data obtained from nearby wells

☐ Yes ☐ No
☐ NA

Within 300 feet of a continuously flowing watercourse, or 200 feet of any other significant watercourse or lakebed, sinkhole, or playa lake (measured from the ordinary high-water mark).

- Topographic map; Visual inspection (certification) of the proposed site

☐ Yes ☐ No

Within 300 feet from a permanent residence, school, hospital, institution, or church in existence at the time of initial application.

- Visual inspection (certification) of the proposed site; Aerial photo; Satellite image

☐ Yes ☐ No

Within 500 horizontal feet of a private, domestic fresh water well or spring that less than five households use for domestic or stock watering purposes, or within 1000 horizontal feet of any other fresh water well or spring, in existence at the time of initial application.

- NM Office of the State Engineer - iWATERS database; Visual inspection (certification) of the proposed site

☐ Yes ☐ No

Within incorporated municipal boundaries or within a defined municipal fresh water well field covered under a municipal ordinance adopted pursuant to NMSA 1978, Section 3-27-3, as amended.

- Written confirmation or verification from the municipality; Written approval obtained from the municipality

☐ Yes ☐ No

Within 500 feet of a wetland.

- US Fish and Wildlife Wetland Identification map; Topographic map; Visual inspection (certification) of the proposed site

☐ Yes ☐ No

Within the area overlying a subsurface mine.

- Written confirmation or verification or map from the NM EMNRD-Mining and Mineral Division

☐ Yes ☐ No

Within an unstable area.

- Engineering measures incorporated into the design; NM Bureau of Geology & Mineral Resources; USGS; NM Geological Society; Topographic map

☐ Yes ☐ No

Within a 100-year floodplain.

- FEMA map

☐ Yes ☐ No

18.

On-Site Closure Plan Checklist: (19.15.17.13 NMAC) **Instructions:** Each of the following items must be attached to the closure plan. Please indicate, by a check mark in the box, that the documents are attached.

☐ Siting Criteria Compliance Demonstrations - based upon the appropriate requirements of 19.15.17.10 NMAC

☐ Proof of Surface Owner Notice - based upon the appropriate requirements of Subsection F of 19.15.17.13 NMAC

☐ Construction/Design Plan of Burial Trench (if applicable) based upon the appropriate requirements of 19.15.17.11 NMAC

☐ Construction/Design Plan of Temporary Pit (for in-place burial of a drying pad) - based upon the appropriate requirements of 19.15.17.11 NMAC

☐ Protocols and Procedures - based upon the appropriate requirements of 19.15.17.13 NMAC

☐ Confirmation Sampling Plan (if applicable) - based upon the appropriate requirements of Subsection F of 19.15.17.13 NMAC

☐ Waste Material Sampling Plan - based upon the appropriate requirements of Subsection F of 19.15.17.13 NMAC

☐ Disposal Facility Name and Permit Number (for liquids, drilling fluids and drill cuttings or in case on-site closure standards cannot be achieved)

☐ Soil Cover Design - based upon the appropriate requirements of Subsection H of 19.15.17.13 NMAC

☐ Re-vegetation Plan - based upon the appropriate requirements of Subsection I of 19.15.17.13 NMAC

☐ Site Reclamation Plan - based upon the appropriate requirements of Subsection G of 19.15.17.13 NMAC

19.

Operator Application Certification:

I hereby certify that the information submitted with this application is true, accurate and complete to the best of my knowledge and belief.

Name (Print): Rodney BaileyTitle: Waste & Water Group Lead

Signature: _____

Date: March 1, 2010e-mail address: Bailerg@chevron.comTelephone: (432) 687 7123

20.

OCD Approval: ☐ Permit Application (including closure plan) ☐ Closure Plan (only) ☐ OCD Conditions (see attachment)

OCD Representative Signature: _____

Approval Date: _____

Title: _____

OCD Permit Number: _____

21.

Closure Report (required within 60 days of closure completion): Subsection K of 19.15.17.13 NMAC

Instructions: Operators are required to obtain an approved closure plan prior to implementing any closure activities and submitting the closure report. The closure report is required to be submitted to the division within 60 days of the completion of the closure activities. Please do not complete this section of the form until an approved closure plan has been obtained and the closure activities have been completed.

☐ Closure Completion Date: _____

22.

Closure Method:

☐ Waste Excavation and Removal ☐ On-Site Closure Method ☐ Alternative Closure Method ☐ Waste Removal (Closed-loop systems only)
☐ If different from approved plan, please explain.

23.

Closure Report Regarding Waste Removal Closure For Closed-loop Systems That Utilize Above Ground Steel Tanks or Haul-off Bins Only:

Instructions: Please identify the facility or facilities for where the liquids, drilling fluids and drill cuttings were disposed. Use attachment if more than two facilities were utilized.

Disposal Facility Name: _____

Disposal Facility Permit Number: _____

Disposal Facility Name: _____

Disposal Facility Permit Number: _____

Were the closed-loop system operations and associated activities performed on or in areas that *will not* be used for future service and operations?

☐ Yes (If yes, please demonstrate compliance to the items below) ☐ No

Required for impacted areas which will not be used for future service and operations:

- ☐ Site Reclamation (Photo Documentation)
☐ Soil Backfilling and Cover Installation
☐ Re-vegetation Application Rates and Seeding Technique

24.

Closure Report Attachment Checklist: *Instructions: Each of the following items must be attached to the closure report. Please indicate, by a check mark in the box, that the documents are attached.*

- ☐ Proof of Closure Notice (surface owner and division)
☐ Proof of Deed Notice (required for on-site closure)
☐ Plot Plan (for on-site closures and temporary pits)
☐ Confirmation Sampling Analytical Results (if applicable)
☐ Waste Material Sampling Analytical Results (required for on-site closure)
☐ Disposal Facility Name and Permit Number
☐ Soil Backfilling and Cover Installation
☐ Re-vegetation Application Rates and Seeding Technique
☐ Site Reclamation (Photo Documentation)

On-site Closure Location: Latitude _____ Longitude _____ NAD: ☐ 1927 ☐ 1983

25.

Operator Closure Certification:

I hereby certify that the information and attachments submitted with this closure report is true, accurate and complete to the best of my knowledge and belief. I also certify that the closure complies with all applicable closure requirements and conditions specified in the approved closure plan.

Name (Print): _____

Title: _____

Signature: _____

Date: _____

e-mail address: _____

Telephone: _____

• Well Name & Number: NB204A B2 -35 DATE: _____

• API #: 30045-2875 Initials: _____

• Lease #: _____

• Quarter/Quarter: _____ Section: 35 Township: 32N Range: 13W

• Lat: 36.948266 Long: -108.169825

• Pit Tank #1: Manufacturer: _____

• Serial #: 8104 DOM: 8-09 Size _____ bbl

○ If N/A – Dimensions: Diameter 12' Height 6'

• Material: Steel X Galvanized _____ Fiberglass _____

• Tank Configuration: Double Wall ✓ Single Wall _____ (Buried _____ or Exposed _____ Walls)

• Contents: Produced Water _____ Condensate _____ Recycled Oil 40 Sgwt

• Tank Top Covering: Solid/Cone-top _____ Netting X (Solid X Fiber _____)

• Secondary Containment: Yes X No _____

• Fencing around berm: Yes X No _____

○ Fence Type: Cattle Panel _____ Field Fence X Barbwire _____

• Pit Tank #2: Manufacturer: _____

• Serial #: _____ DOM: _____ Size _____ bbl

○ If N/A – Dimensions: Diameter _____ Height _____

• Material: Steel _____ Galvanized _____ Fiberglass _____

• Tank Configuration: Double Wall _____ Single Wall _____ (Buried _____ or Exposed _____ Walls)

• Contents: Produced Water _____ Condensate _____ Recycled Oil _____

• Tank Top Covering: Solid/Cone-top _____ Netting _____ (Solid _____ Fiber _____)

• Secondary Containment: Yes _____ No _____

• Fencing around berm: Yes _____ No _____

○ Fence Type: Cattle Panel _____ Field Fence _____ Barbwire _____

• Above-Ground Tank #1: Manufacturer: _____

• Serial #: _____ DOM: _____ Size _____ bbl

○ If N/A – Dimensions: Diameter _____ Height _____

• Material: Steel _____ Galvanized _____ Fiberglass _____

• Contents: Produced Water _____ Condensate _____ (State # _____) Recycled Oil _____

• Secondary Containment: Yes _____ No _____

• Above-Ground Tank #2: Manufacturer: _____

• Serial #: _____ DOM: _____ Size _____ bbl

○ If N/A – Dimensions: Diameter _____ Height _____

• Material: Steel _____ Galvanized _____ Fiberglass _____

• Contents: Produced Water _____ Condensate _____ (State # _____) Recycled Oil _____

• Secondary Containment: Yes _____ No _____

• Above-Ground Tank #3: Manufacturer: _____

• Serial #: _____ DOM: _____ Size _____ bbl

○ If N/A – Dimensions: Diameter _____ Height _____

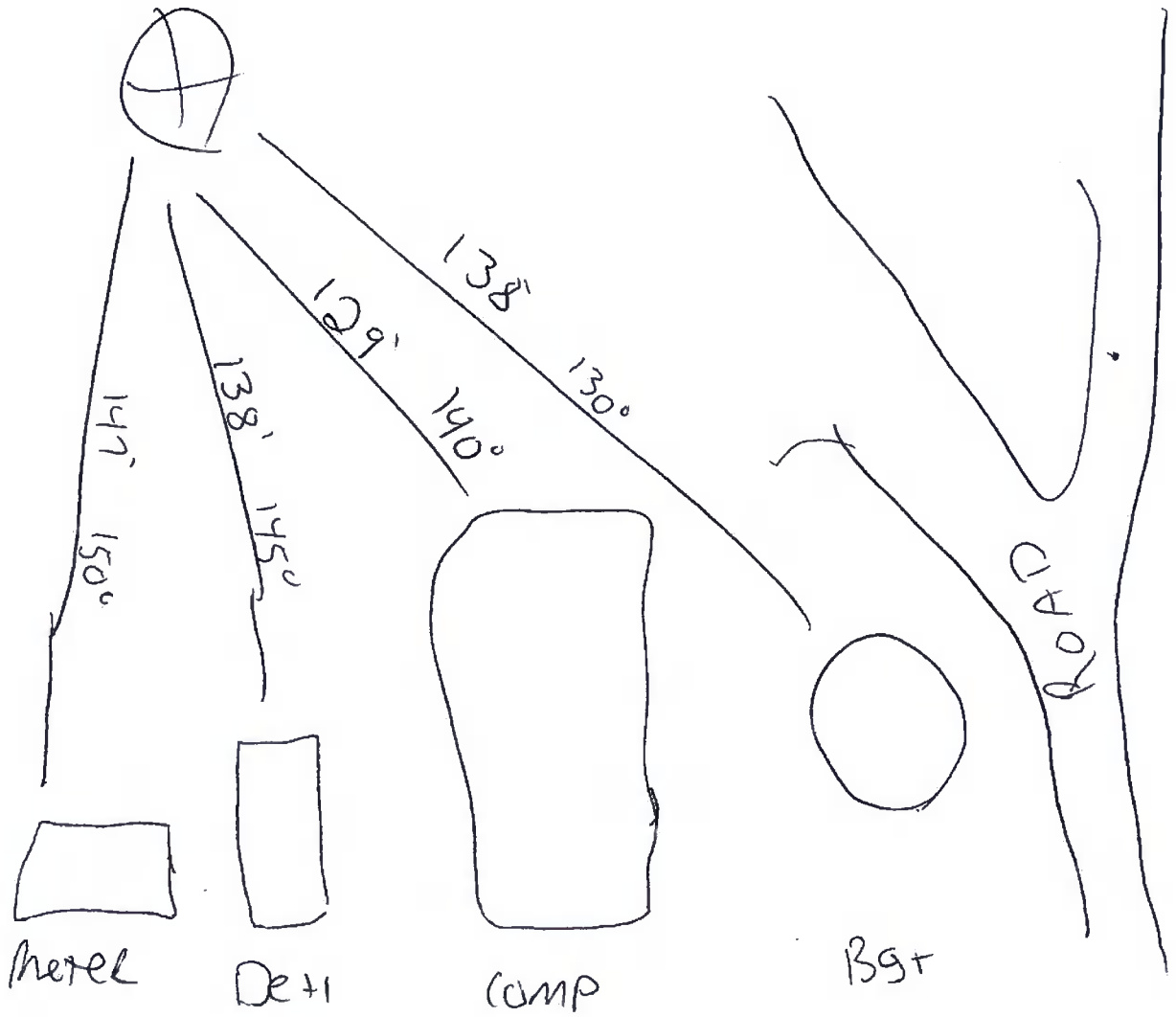
• Material: Steel _____ Galvanized _____ Fiberglass _____

• Contents: Produced Water _____ Condensate _____ (State # _____) Recycled Oil _____

• Secondary Containment: Yes _____ No _____

Well Schematic

NORTH



Schematic Key:

Separator

SEP

Artificial Lift

AL

Condensate Tank

COND

Compressor

COM

Meter Run

METER RUN

Dehydrator

DEH

Well Head



Water Tank

WATER

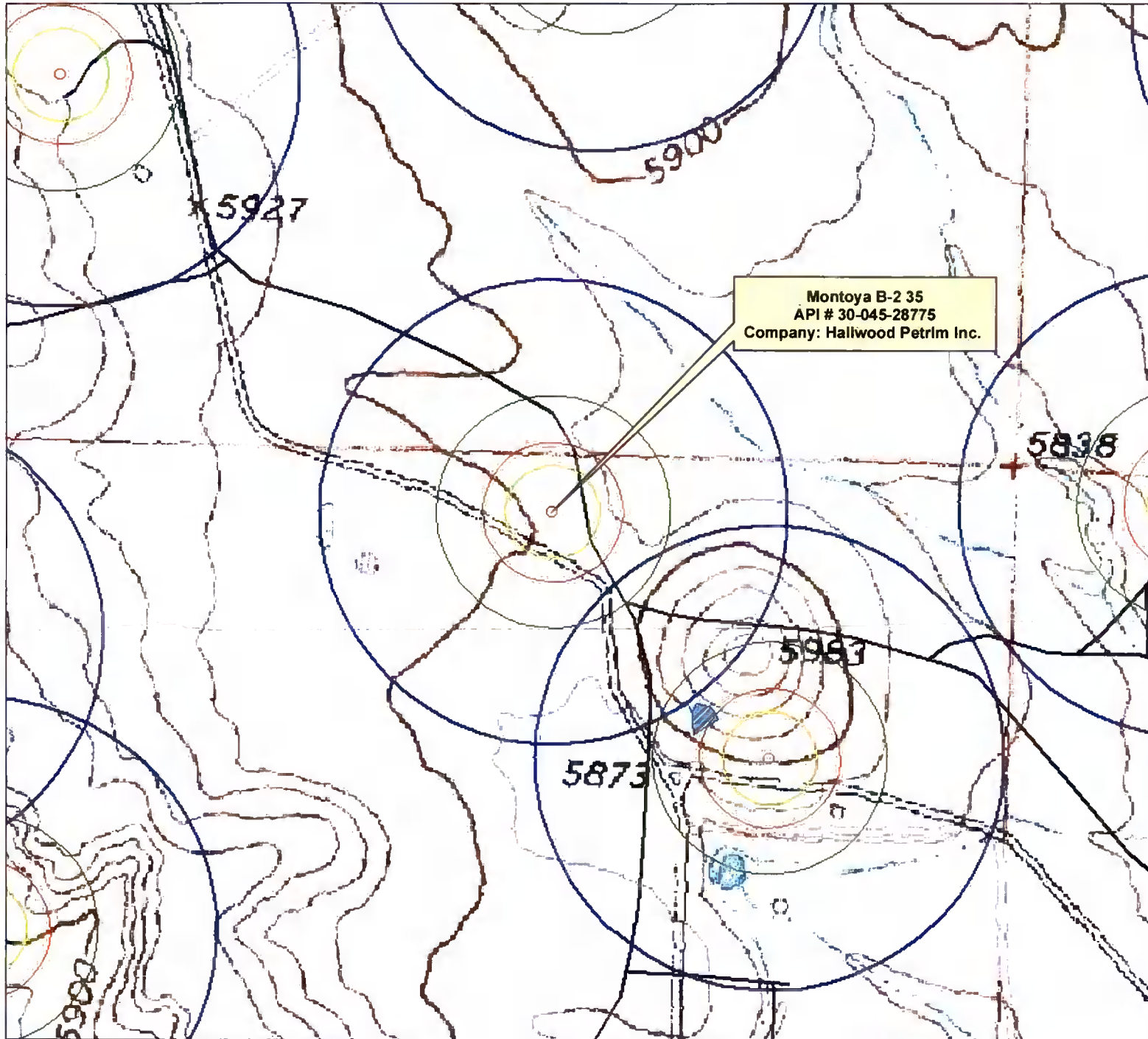
Measure any distance 1000ft or less of the following:

• From wellhead to any continuous flowing or significant water course. N/A

• From below-grade tanks to any permanent residence, school, church, hospital, etc. N/A

Montoya B-2 35

API # 30-045-28775



Legend

- Incorporated Municipal Boundaries
- 200' buffer
- 300' buffer
- 500' buffer
- 1000' Buffer
- NWI wetland polygons
- Chevron/4 Star Locations
- Water Wells (iWaters)
- roads
- USGS Drainages



Disclaimer: Data presented in the maps have been obtained or modified from data available from many different environmental programs, including data gathered from regional observations by Environmental, Inc. personnel. Outside data sources include the M&U R&S, Wetters Database, USGS 7.5 Minute Quadrangle Maps, Chevron Midcontinent LP, and National Wetlands Inventory.

Political boundaries may change. Drought, precipitation and other natural events cause constant change in vegetation distribution and environmental conditions. As such the information provided in these maps is only valid for the time period in which it was obtained and transcribed. Moreover, the information's accuracy, as presented, is only as accurate as the sources from which it was obtained. Care should be taken in interpreting these data. Written documents may accompany these maps and should be referenced. The information portrayed on these maps should not replace field observations. Data discrepancies may become apparent at scales different than those at which data was created. The areas portrayed here are graphic representations of some phenomena that are difficult to reduce to two dimensions.

ANY DATA OR INFORMATION PROVIDED BY THESE MAPS IS "AS IS" WITHOUT WARRANTY OF ANY KIND, EITHER EXPRESSED OR IMPLIED, INCLUDING, BUT NOT LIMITED TO, THE IMPLIED WARRANTIES OF MERCHANTABILITY AND FITNESS FOR A PARTICULAR PURPOSE. Data or information provided by these maps shall be used and relied upon only at the user's sole risk, and the user agrees to indemnify and hold harmless Pyramix Environmental Consulting, Inc., its officers, officers and employees from any liability arising out of the use of the data or information provided.



Human Energy



Montoya B-2 35 API # 30-045-28775



Legend

- Incorporated Municipal Boundaries
- 200' buffer
- 300' buffer
- 500' buffer
- 1000' Buffer
- NWI wetland polygons
- Chevron/4 Star Locations
- Water Wells (iWaters)
- roads
- USGS Drainages

0 0.02 0.04 0.08 0.12 0.16 Miles

Disclaimer: Data presented in this map has been obtained or modified from data available from many different environmental programs, including data gathered from regional observations by Environmental, Inc. personnel. Outside data sources include the NMU G.S. Wetland Database, USGS 7.5 Minute Quadrangle Maps, Chevron Midcontinent LP, and National Wetlands Inventory.

Political boundaries may change. Drought, precipitation and other natural events cause constant change in vegetation distribution, and environmental conditions. As such the information provided in this map is only valid for the time period in which it was obtained and transferred. Moreover, the information is accurate as presented, is only as accurate as the sources from which it was obtained. Care should be taken in interpreting these data. Written documents may accompany these maps and should be referenced. The information portrayed on these maps should not replace field assessments. Data discrepancies may become apparent in scales different than those at which data was created. The maps portrayed here are graphic representations of some phenomena that are difficult to reduce to two dimensions.

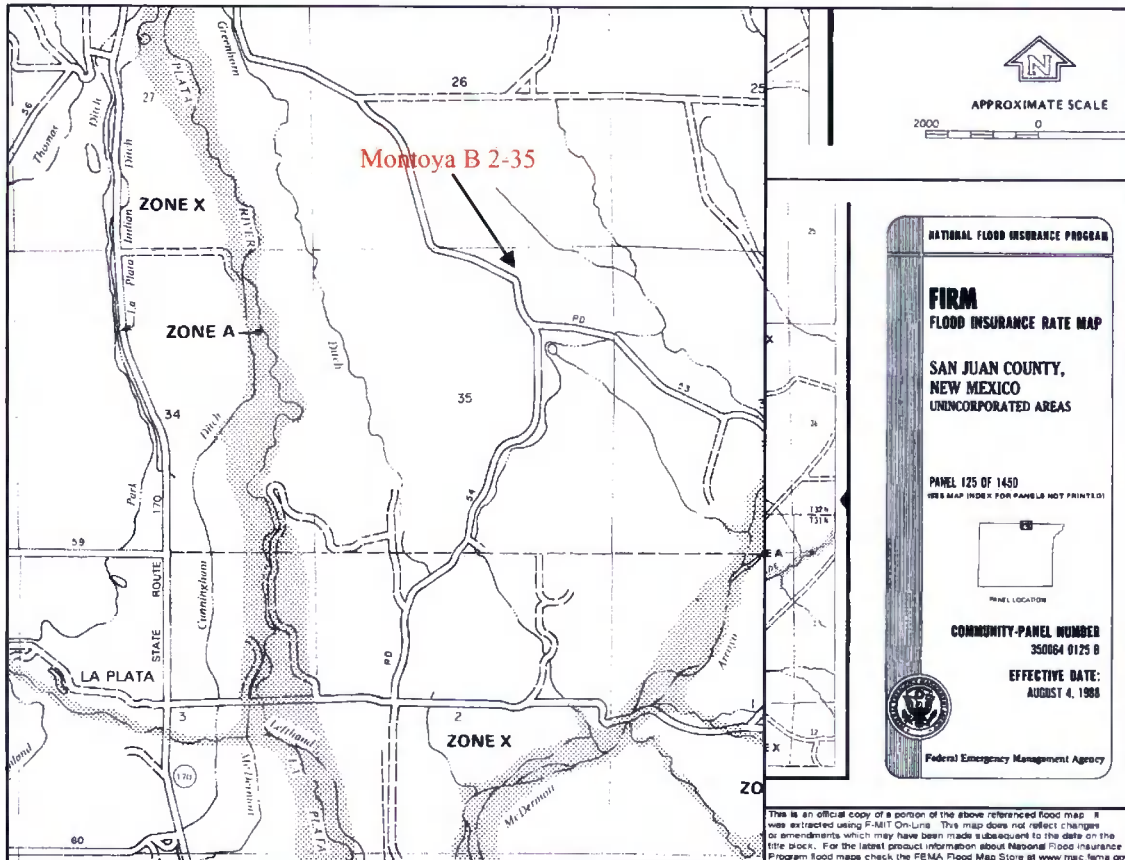
ANY DATA OR INFORMATION PROVIDED BY THESE MAPS IS "AS IS" WITHOUT WARRANTY OF ANY KIND, EITHER EXPRESSED OR IMPLIED, INCLUDING, BUT NOT LIMITED TO, THE IMPLIED WARRANTIES OF MERCHANTABILITY AND FITNESS FOR A PARTICULAR PURPOSE. Data or information provided by these maps shall be used and relied upon only at the user's sole risk, and the user agrees to indemnify and hold harmless Primorya Environmental Consulting, Inc., its officials, officers and employees from any liability arising out of the use of the data or information provided.



Human Energy



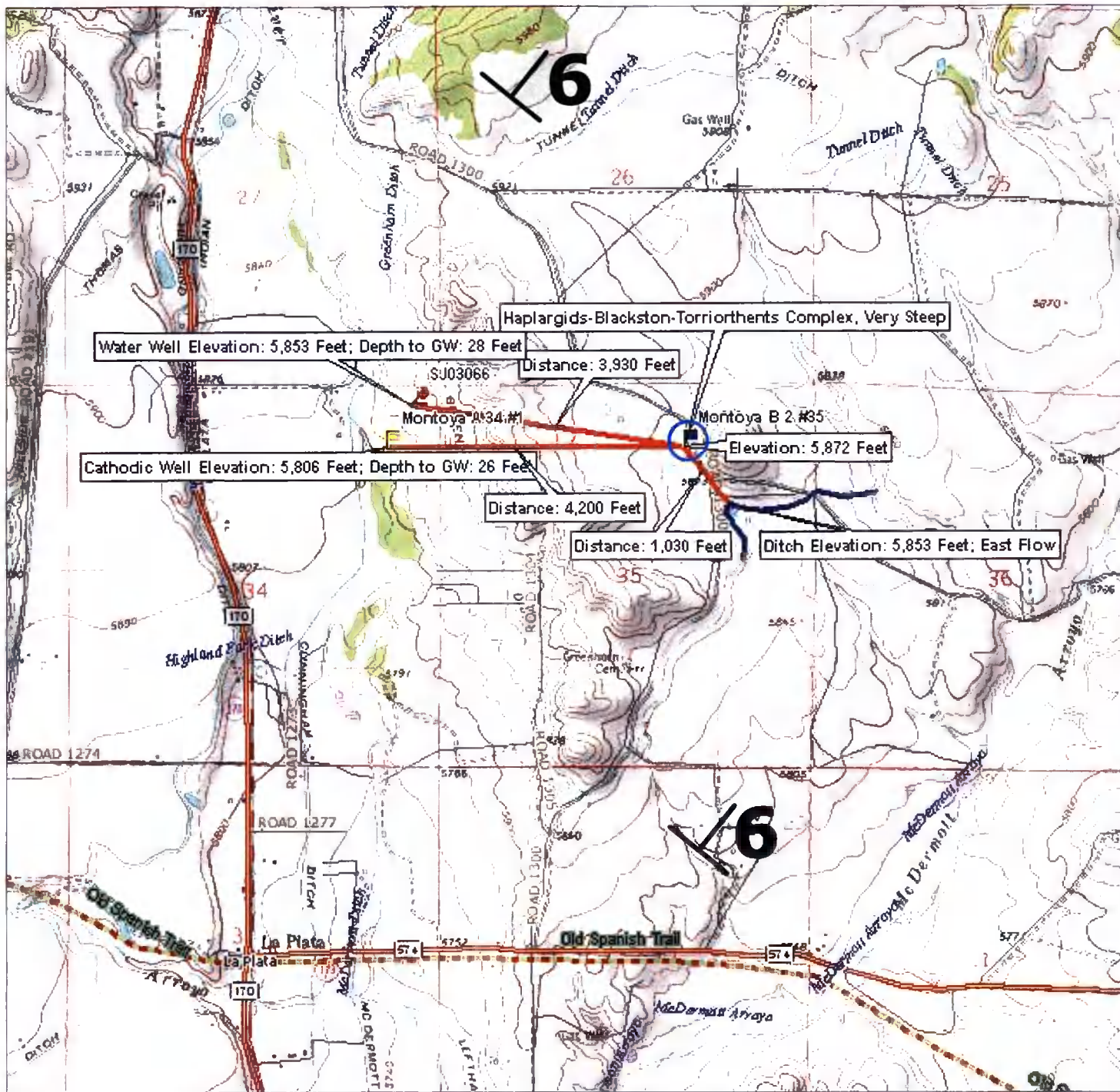
Montoya B 2-35
API # 30-045-28775
NW ¼ NE ¼ Sec. 35 T32N R13W



Montoya B 2 #35 Groundwater Statement

The attached iWATERS database search and topographic map shows a water well approximately 3,930 feet to the north-west with a depth to groundwater of 28 feet. This water well is labeled on the topographic map with a red point. As evidenced on the attached topographic map, the water well is at an elevation approximately 19 feet lower than the Montoya B 2 #35 well site, which is represented by a blue flag on the topographic map. The attached cathodic well data sheet for a cathodic well drilled in 1990 for the Montoya A-34 #1 well site shows that groundwater was encountered at 26 feet. This cathodic well data sheet is stamped as being accepted by the OCD in January of 1991. The Montoya A-34 #1 well site is approximately 4,200 feet west of the Montoya B 2 #35 well site and is approximately 66 feet lower in elevation. The Montoya A-34 #1 well site is labeled on the topographic map with a yellow flag. The soil type at the Montoya B 2 #35 well site is a Haplargids-Blackston-Torriorthents Complex, very steep. This is a well drained soil, characterized by cobbly, sandy, clay loam material and a moderate water capacity. The nearest surface water is the Greenhorn Ditch approximately 1,030 feet to the south-east of the Montoya B 2 #35 well site at an elevation of 5,853 feet. The Montoya B 2 #35 well site lies in the Ojo Alamo Sandstone Formation Aquifer which dips at 6 degrees to the north-east (Frenzel, 1983); see Topographic Map for aquifer dip direction. The Ojo Alamo Sandstone Formation dips towards the basin center to a maximum depth of 3,645 feet (Frenzel, 1983). These findings indicate that the depth to groundwater may not be greater than 50 feet from the bottom of the BGT at the Montoya B 2 #35 well site. All above information, excluding the aquifer dip, was confirmed by a visual inspection performed by Envirotech, Inc.

The Ojo Alamo Sandstone (Toa) of Paleocene age is the basal Tertiary unit within the eastern San Juan Basin and grades into the overlying silts and clays of the Nacimientos/Animas Formations (Brimhall, 1983, p. 200). The Ojo Alamo disconformably overlies the Kirtland Shale in the subsurface although in some places along the eastern side of the basin, the Ojo Alamo unconformity completely cut out the Kirtland to Fruitland Formations and rests directly on the Lewis Shale (Fassett, 1974, p. 228). The thickness of the overall section ranges from 72 to 313 feet (Stone, etal, 1983, p. 31). The unit is comprised predominantly a cross-bedded, moderately consolidated, medium to very coarse-grained, frequently pebbly immature lithic conglomeratic sandstones (Stone, etal, 1983, p. 31). The depositional environment of the sandstone beds is fluvial (Fassett, 1973) and interbedded with clay and silt beds. Where it structurally outcrops along a narrow band, the Ojo Alamo forms well-pronounced cliffs.



LEGEND

- Aquifer Strike & Dip
- Emphereal Wash
- Well Area Soil Type
- Distance

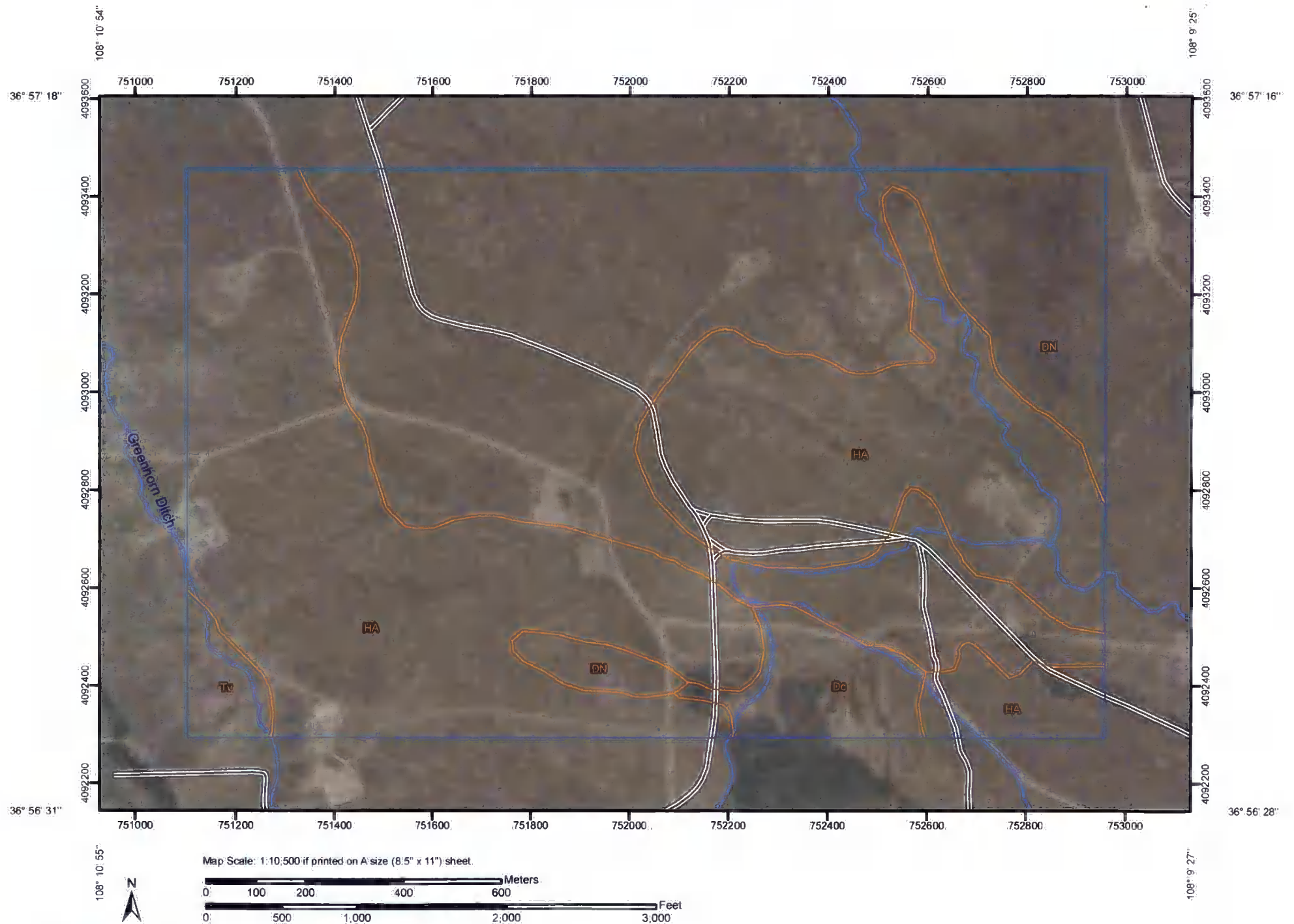
Topographic Map
 Montoya B 2 #35
 Sec 35, Twp 32N, Rge 13W
 San Juan County, New Mexico

SCALE: NTS	FIGURE NO. 1	REV
PROJECT N092270-0342		

REVISIONS				
NO.	DATE	BY	DESCRIPTION	
MAP	DRWN	JPM	DATE	4/7/09



Soil Map—San Juan County, New Mexico, Eastern Part



MAP LEGEND






















Area of Interest (AOI)

 Area of Interest (AOI)

Soils

 Soil Map Units

Special Point Features

-  Blowout
-  Borrow Pit
-  Clay Spot
-  Closed Depression
-  Gravel Pit
-  Gravelly Spot
-  Landfill
-  Lava Flow
-  Marsh or swamp
-  Mine or Quarry
-  Miscellaneous Water
-  Perennial Water
-  Rock Outcrop
-  Saline Spot
-  Sandy Spot
-  Severely Eroded Spot
-  Sinkhole
-  Slide or Slip
-  Sodic Spot
-  Spoil Area
-  Stony Spot



Very Stony Spot



Wet Spot



Other

Special Line Features



Gully



Short Steep Slope



Other

Political Features



Cities

Water Features



Oceans



Streams and Canals

Transportation



Rails



Interstate Highways



US Routes



Major Roads



Local Roads

MAP INFORMATION

Map Scale: 1:10,500 if printed on A size (8.5" × 11") sheet.

The soil surveys that comprise your AOI were mapped at 1:63,360.

Please rely on the bar scale on each map sheet for accurate map measurements.

Source of Map: Natural Resources Conservation Service
Web Soil Survey URL: <http://websoilsurvey.nrcs.usda.gov>
Coordinate System: UTM Zone 12N NAD83

This product is generated from the USDA-NRCS certified data as of the version date(s) listed below.

Soil Survey Area: San Juan County, New Mexico, Eastern Part
Survey Area Data: Version 9, Feb 20, 2009

Date(s) aerial images were photographed: 6/30/2005

The orthophoto or other base map on which the soil lines were compiled and digitized probably differs from the background imagery displayed on these maps. As a result, some minor shifting of map unit boundaries may be evident.

Map Unit Legend

San Juan County, New Mexico, Eastern Part (NM618)			
Map Unit Symbol	Map Unit Name	Acres in AOI	Percent of AOI
Dc	Doak loam, 3 to 5 percent slopes	20.1	3.8%
DN	Doak-Avalon association, gently sloping	236.1	44.2%
HA	Haplargids-Blackston-Torriorthents complex, very steep	269.0	50.4%
Tv	Turley-Slickspots complex, 0 to 3 percent slopes	8.4	1.6%
Totals for Area of Interest		533.6	100.0%

San Juan County, New Mexico, Eastern Part

HA—Haplargids-Blackston-Torriorthents complex, very steep

Map Unit Setting

Elevation: 4,800 to 6,400 feet
Mean annual precipitation: 6 to 10 inches
Mean annual air temperature: 51 to 55 degrees F
Frost-free period: 140 to 160 days

Map Unit Composition

Haplargids and similar soils: 45 percent
Blackston and similar soils: 30 percent
Torriorthents and similar soils: 20 percent

Description of Haplargids

Setting

Landform: Escarpments
Landform position (three-dimensional): Side slope
Down-slope shape: Convex
Across-slope shape: Convex
Parent material: Mixed alluvium

Properties and qualities

Slope: 8 to 50 percent
Depth to restrictive feature: More than 80 inches
Drainage class: Well drained
Capacity of the most limiting layer to transmit water (Ksat): Moderately high to high (0.60 to 2.00 in/hr)
Depth to water table: More than 80 inches
Frequency of flooding: None
Frequency of ponding: None
Calcium carbonate, maximum content: 10 percent
Maximum salinity: Nonsaline to very slightly saline (0.0 to 4.0 mmhos/cm)
Available water capacity: Moderate (about 7.3 inches)

Interpretive groups

Land capability (nonirrigated): 7e
Ecological site: Loamy (R035XB001NM)

Typical profile

0 to 7 inches: Cobbly sandy loam
7 to 26 inches: Cobbly sandy clay loam
26 to 60 inches: Cobbly sandy clay loam

Description of Blackston

Setting

Landform: Escarpments
Landform position (three-dimensional): Side slope
Down-slope shape: Convex
Across-slope shape: Convex

Parent material: Mixed alluvium

Properties and qualities

Slope: 8 to 40 percent

Depth to restrictive feature: More than 80 inches

Drainage class: Well drained

Capacity of the most limiting layer to transmit water

(Ksat): Moderately high to high (0.60 to 2.00 in/hr)

Depth to water table: More than 80 inches

Frequency of flooding: None

Frequency of ponding: None

Calcium carbonate, maximum content: 30 percent

Maximum salinity: Very slightly saline to slightly saline (4.0 to 8.0 mmhos/cm)

Available water capacity: Low (about 4.5 inches)

Interpretive groups

Land capability (nonirrigated): 7e

Ecological site: Limy (R035XB003NM)

Typical profile

0 to 11 inches: Gravelly loam

11 to 26 inches: Very gravelly loam

26 to 60 inches: Very gravelly sand

Description of Torriorthents

Setting

Landform: Escarpments

Landform position (three-dimensional): Side slope

Down-slope shape: Convex

Across-slope shape: Convex

Parent material: Mixed alluvium

Properties and qualities

Slope: 8 to 50 percent

Depth to restrictive feature: 10 to 20 inches to paralithic bedrock

Drainage class: Well drained

Capacity of the most limiting layer to transmit water (Ksat): Very low to moderately high (0.00 to 0.20 in/hr)

Depth to water table: More than 80 inches

Frequency of flooding: None

Frequency of ponding: None

Calcium carbonate, maximum content: 2 percent

Gypsum, maximum content: 2 percent

Maximum salinity: Nonsaline to very slightly saline (0.0 to 4.0 mmhos/cm)

Sodium adsorption ratio, maximum: 2.0

Available water capacity: Very low (about 2.2 inches)

Interpretive groups

Land capability (nonirrigated): 7e

Ecological site: Hills (R042XB027NM)

Typical profile

0 to 3 inches: Cobbly loam

3 to 15 inches: Cobbly clay loam
15 to 60 inches: Bedrock

Data Source Information

Soil Survey Area: San Juan County, New Mexico, Eastern Part
Survey Area Data: Version 9, Feb 20, 2009

30-045-24399

DATA SHEET FOR DEEP GROUND BED CATHODIC PROTECTION WELLS
NORTHWESTERN NEW MEXICO
(Submit 3 copies to OCD Aztec Office)

Operator UNOCAL Location: Unit Sec. 34 Twp 32 Rng 13

Name of Well/Wells or Pipeline Serviced Montoya Well No. 1-A34

Elevation Completion Date 12-15-90 Total Depth 200' Land Type* P

Casing, Sizes, Types & Depths '40' deep with 6" diameter schedule 40 PVC casing pipe.

If Casing is cemented, show amounts & types used NA=NONE

If Cement or Bentonite Plugs have been placed, show depths & amounts used
NA=NONE

Depths & thickness of water zones with description of water when possible:
Fresh, Clear, Salty, Sulphur, Etc. 26' to 36' deep=10' thick zone of water, gravel
and rocks (cased from 0' to 40' deep).

Depths gas encountered: NA=NONE
200' deep with carbo 40=99.9% carbon coke=
Type & amount of coke breeze used: 1,400 lbs.

Depths anodes placed: 130', 140', 150', 160', 170', 180'

Depths vent pipes placed: 0' to 200' deep

Vent pipe perforations: From 100' to 200' deep - laser slotted

Remarks:

If any of the above data is unavailable, please indicate so. Copies of all logs, including Drillers Log, Water Analyses & Well Bore Schematics should be submitted when available. Unplugged abandoned wells are to be included

*Land Type may be shown: F-Federal; I-Indian; S-State; P-Fee.
If Federal or Indian, add Lease Number.

RECEIVED

JAN 30 1991

OIL CON. DIV
DIST 3



New Mexico Office of the State Engineer

Water Column/Average Depth to Water

(quarters are 1=NW 2=NE 3=SW 4=SE)

(quarters are smallest to largest)

(NAD83 UTM in meters)

(In feet)

POD Number	Sub basin	Use	County	Q 64	Q 16	Q 4	Sec	Tws	Rng	X	Y	Distance	Depth Well	Depth Water	Water Column
SJ 03066	STK		SJ	2	2	2	34	32N	13W	216545	4094053*	1130	41	28	13
SJ 03090	DOM		SJ	1	1	3	35	32N	13W	216725	4093232*	1245	59	47	12
SJ 02901	DOM		SJ	2	2	4	34	32N	13W	216523	4093246*	1397	50		
SJ 02589	DOM		SJ	2	3	3	35	32N	13W	216909	4092811*	1445	60	35	25
Average Depth to Water:													36 feet		
Minimum Depth:													28 feet		
Maximum Depth:													47 feet		

Record Count: 4

UTMNAD83 Radius Search (in meters):

Easting (X): 217675.71

Northing (Y): 4094036.29

Radius: 1500

*UTM location was derived from PLSS - see Help

The data is furnished by the NMOSE/ISC and is accepted by the recipient with the expressed understanding that the OSE/ISC make no warranties, expressed or implied, concerning the accuracy, completeness, reliability, usability, or suitability for any particular purpose of the data.

BELOW GRADE TANK (BGT) DESIGN AND CONSTRUCTION PLAN

SUBMITTED TO:

ENVIRONMENTAL BUREAU,

NEW MEXICO OIL CONSERVATION DIVISION

ON BEHALF OF:

CHEVRON USA INC., CHEVRON MIDCONTINENT, L.P., AND FOUR STAR OIL & GAS
COMPANY

P.O. Box 730

AZTEC, NEW MEXICO 87410

(505) 333-1901

Chevron
San Juan Basin
Below Grade Tank Design and Construction Plan

INTRODUCTION

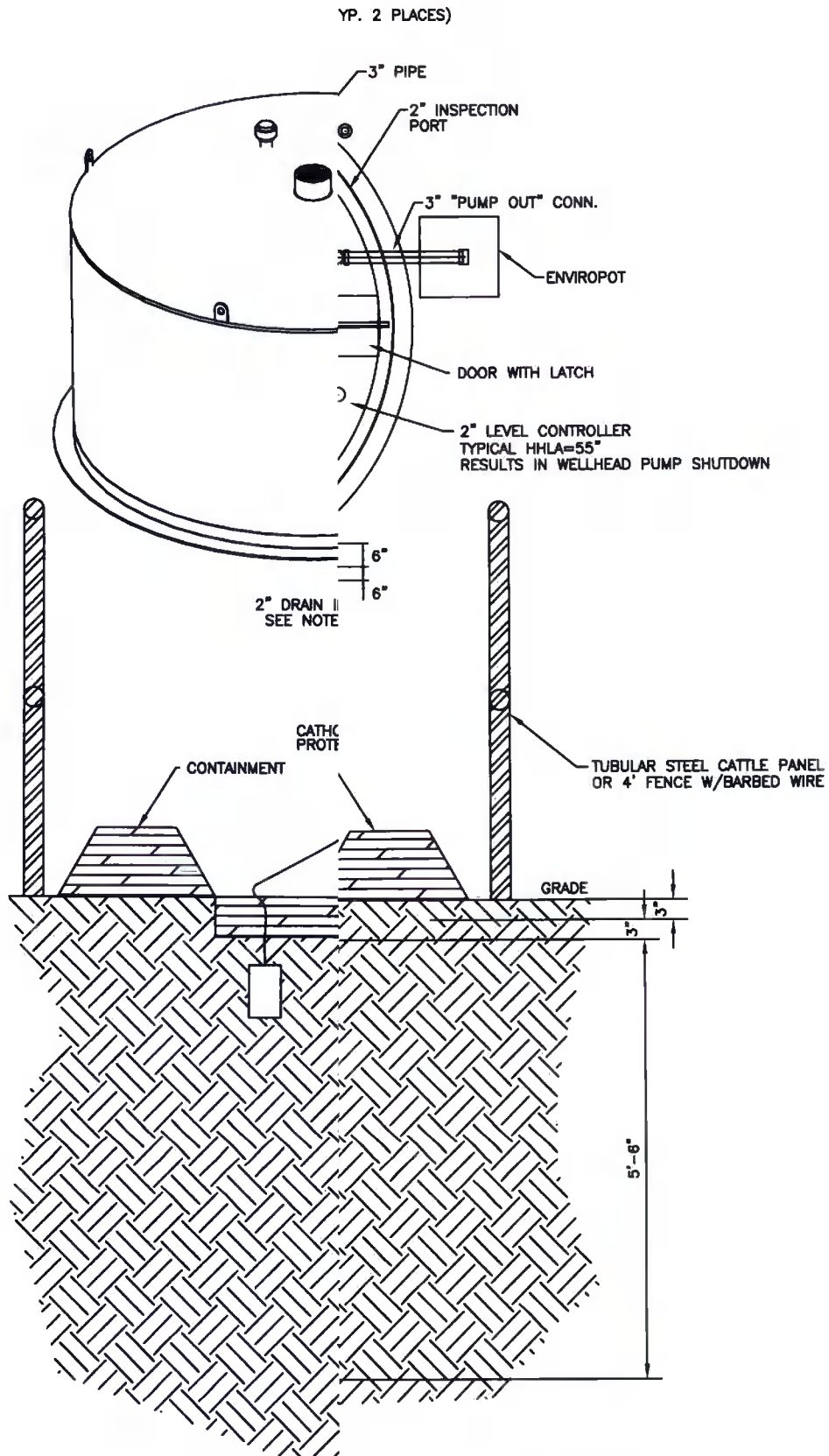
In accordance with NMAC §§ 19.15.17.9(B)(4) and 19.15.17.11 Chevron (representing Chevron USA Inc, Chevron Midcontinent, L.P., and Four Star Oil & Gas Company) submits this Design and Construction Plan for below grade tanks (BGTs) in New Mexico. This Plan contains standard conditions that attach to multiple BGTs.

1. Chevron will design and construct a BGT to contain liquids and solids, prevent contamination of fresh water, and protect public health and the environment. NMAC § 19.15.17.11(A).
2. Chevron will post an upright sign not less than 12 inches by 24 inches with lettering not less than two inches in height in a conspicuous place on the fence surrounding the BGT, unless the BGT is located on a site where there is an existing well, signed in compliance with NMAC § 19.15.16.8, that is operated by Chevron. Chevron will post the sign in a manner and location such that a person can easily read the legend. The sign will provide the following information: Chevron's name; the location of the site by quarter-quarter or unit letter, section, township and range; and emergency telephone numbers. NMAC § 19.15.17.11(C).
3. Chevron will fence or enclose a BGT in a manner that prevents unauthorized access and will maintain the fences in good repair. Fences are not required if there is an adequate surrounding perimeter fence that prevents unauthorized access to the well site or facility, including the BGT. NMAC § 19.15.17.11(D)(1).
4. Chevron will fence or enclose a BGT located within 1000 feet of a permanent residence, school, hospital, institution or church with a chain link security fence, at least six feet in height with at least two strands of barbed wire at the top. Chevron will close and lock all gates associated with the fence when responsible personnel are not on-site. NMAC § 19.15.17.11(D)(2).
5. Chevron will fence BGTs to exclude livestock with a four foot fence that has at least four strands of barbed wire evenly spaced in the interval between one foot and four feet above ground level. NMAC § 19.15.17.11(D)(3). Chevron may install tubular steel cattle panels, as it determines appropriate (photo of cattle

panel fence submitted to NMOCD, 24 June 2009). As illustrated on the attach photo.

6. Chevron will screen the permanent opening on the tank top with expanding steel mesh in order to render it non-hazardous to wildlife, including migratory birds. NMAC § 19.15.17.11(E).
7. Chevron's BGTs will be constructed with the design features illustrated on the attached drawing.
8. Only double-walled, double-bottomed BGTs will be installed.
9. Chevron will use 3/16" carbon steel which is resistant to the anticipated contents and resistant to damage from sunlight. NMAC § 19.15.17.11(I)(1).
10. Chevron will construct a BGT foundation on a level base free of rocks, debris, sharp edges or irregularities to help prevent punctures, cracks or indentations of the liner or tank bottom. NMAC § 19.15.17.11(I)(2).
11. Chevron will construct a BGT to prevent overflow and the collection of surface water run-on. NMAC § 19.15.17.11(I)(3). Chevron, or a contractor representing Chevron, will install a level control device to help prevent overflow from the BGT and will use berms and/or a diversion ditch to prevent surface run on from entering the BGT. NMAC §§ 19.15.17.11(I)(3), 19.15.17.12(A)(7), and 19.15.17.12(D)(1).
12. All BGTs, in which the side walls are not open for visible inspection for leaks, will be double walled with leak detection capability. NMAC § 19.15.17.11(I)(4)(b).
13. Chevron, as the operator of a below-grade tank constructed and installed prior to June 16, 2008 that does not meet all the requirements in Paragraphs (1) through (4) of Subsection I of 19.15.17.11 NMAC and is not included in Paragraph (6) of Subsection I of 19.15.17.11 NMAC, is not required to equip or retrofit the below-grade tank to comply with Paragraphs (1) through (4) of Subsection I of 19.15.17.11 NMAC so long as it demonstrates integrity. If the existing below-grade tank does not demonstrate integrity, the operator shall promptly remove that below-grade tank and install a below-grade tank that complies with Paragraphs (1) through (4) of Subsection I of 19.15.17.11 NMAC, as illustrated in the approved drawing. Chevron shall comply with the operational requirements of 19.15.17.12 NMAC.

14. Chevron, as the operator of a below-grade tank constructed and installed prior to June 16, 2008 that is single walled and where any portion of the tank sidewall is below the ground surface and not visible, shall equip or retrofit the below-grade tank to comply with Paragraphs (1) through (4) of Subsection I of 19.15.17.11 NMAC, or close it, within five years after June 16, 2008. If the existing below-grade tank does not demonstrate integrity, Chevron shall promptly remove that below-grade tank and install a below-grade tank that complies with Paragraphs (1) through (4) of Subsection I of 19.15.17.11 NMAC, as illustrated in the approved drawing. Chevron shall comply with the operational requirements of 19.15.17.12 NMAC.



NOTE
OIL

ELEVATION

SCALE 1"=1'-0"

NOTES:

1. FABRICATOR TO PRESSURE TEST THE AREA BETWEEN THE TANK
2. TANK TO BE CONSTRUCTED OF 3/16" THK. ASTM A36 STEEL. ALL
3. DOUBLE WALL DOUBLE BOTTOM.
4. DEPENDING ON THE ORIENTATION OF THE EQUIPMENT ON LOCATION
DIFFUSER. ANY OF THE FOUR 2" STUBS THAT ARE NOT CONNECTED
5. UNDERGROUND TANK CONNECTIONS AND TRANSFER LINES ARE TO BE
A FUSION BONDED EPOXY (FBE) COATING OR SIMILAR
6. CHEVRON WILL CONSTRUCT A BGT FOUNDATION ON A LEVEL BASE
TO HELP PREVENT PUNCTURES, CRACKS OR INDENTATIONS OF THE

REV	DATE	BY	CHKD

**CHEVRON NORTH AMERICA
EXPLORATION AND PRODUCTION**



95 BBL
STANDARD BELOW GRADE TANK

DATE CHG	05/15/06	REASON	AS NOTED	PRJL NO	12088	DRW. NO.	110	REV.	D
DESIGN BY	J. FUNK	CHG BY		FILED	BLOWDOWN TANK				

BELOW GRADE TANK (BGT) OPERATING AND
MAINTENANCE PLAN

SUBMITTED TO:

ENVIRONMENTAL BUREAU,
NEW MEXICO OIL CONSERVATION DIVISION

ON BEHALF OF:

CHEVRON USA INC., CHEVRON MIDCONTINENT, L.P., AND FOUR STAR OIL & GAS
COMPANY

P.O. Box 730

AZTEC, NEW MEXICO 87410

(505) 333-1901

Chevron

San Juan Basin

Below Grade Tank Operating and Maintenance Plan

INTRODUCTION

In accordance with NMAC §§ 19.15.17.9(B)(4) and 19.15.17.12 Chevron (representing Chevron USA Inc, Chevron Midcontinent, L.P., and Four Star Oil & Gas Company) submits this Operating and Maintenance Plan (O&M Plan) for below grade tanks (BGTs) in New Mexico. This O&M Plan contains standard conditions that attach to multiple BGTs. If needed for a particular BGT, a modified O&M Plan will be submitted to the New Mexico Oil Conservation Division (NMOCD or the division) for approval prior to implementation.

GENERAL PLAN:

1. Chevron, or a contractor representing Chevron, will operate and maintain a BGT to contain liquids and solids to prevent contamination of fresh water and to protect public health and environment. NMAC § 19.15.17.12(A)(1).
2. Chevron will not discharge into or store any hazardous waste in a BGT. NMAC § 19.15.17.12(A)(3).
3. If a BGT develops a leak or is penetrated below the liquid surface, Chevron will remove liquid above the damage within 48 hours, notify the appropriate division district office within 48 hours of discovery and will promptly repair the BGT. If a BGT develops a leak Chevron will remove liquid above the damage within 48 hours, notify the appropriate division district office within 48 hours of discovery and will promptly repair or replace the BGT. If replacement is required, the BGT will meet all specification included in the attached approved design drawing and comply with 19.15.17.11(I)(1-4).
4. If Chevron as an operator of a below-grade tank that was constructed and installed prior to June 16, 2008 that does not meet the requirements of Paragraphs (1) through (4) of Subsection I of 19.15.17.11 NMAC and discovers that the below-grade tank does not demonstrate integrity or that the below-grade tank develops any of the conditions identified in Paragraph (5) of Subsection A of 19.15.17.12 NMAC, then Chevron or their representative shall close the existing below-grade tank pursuant to the closure requirements of 19.15.17.13 NMAC and install a below-grade tank that complies with the requirements of Paragraphs

- (1) through (4) of Subsection I of 19.15.17.11 NMAC. NMAC § 19.15.17.12(D)(5). If replacement is required, the BGT will meet all specification included in the attached approved design drawing.
5. If Chevron as the operator of the below-grade tank that was constructed and installed prior to June 16, 2008 that does not comply with Paragraphs (1) through (4) of Subsection I of 19.15.17.11 NMAC and equips or retrofits the existing tank to comply with Paragraphs (1) through (4) of Subsection I of 19.15.17.11 NMAC, then Chevron or their representative shall visually inspect the area beneath the below-grade tank during the retrofit and document any areas that are wet, discolored or showing other evidence of a release on form C-141. Chevron shall demonstrate to the division whether the evidence of contamination indicates that an imminent threat to fresh water, public health, safety or the environment exists. If the division determines that the contamination does not pose an imminent threat to fresh water, public health, safety or the environment, the operator shall complete the retrofit or the replacement of the below-grade tank. If Chevron or division determines that the contamination poses an imminent threat to fresh water, public health, safety or the environment, then Chevron shall close the existing below-grade tank pursuant to the closure requirements of 19.15.17.13 NMAC prior to initiating the retrofit or replacement. NMAC § 19.15.17.12(D)(6). If replacement is required, the BGT will meet all specification included in the attached approved design drawing.
 6. Chevron, or a contractor representing Chevron, will use berms and/or diversion ditches to prevent surface run-on from entering the BGT by diverting surface water run-on away from the bermed area. NMAC §§ 19.15.17.12(A)(7) and 19.15.17.12(D)(1).
 7. Chevron, or a contractor representing Chevron, will not allow a BGT to overflow and will maintain adequate freeboard on existing BGTs by routine inspections utilizing pumper trucks whose routes are timed based on known production rates. Fluid is pumped out on this schedule. For newly constructed BGTs Chevron, or a contractor representing Chevron, will maintain adequate freeboard by installing level control devices that automatically shut off inflow to alleviate potential overtopping. NMAC § 19.15.17.12(D)(1) and 19.15.17.12(D)(4).
 8. Chevron, or a contractor representing Chevron, will remove a visible or measurable layer of oil from the fluid surface of a BGT. NMAC § 19.15.17.12(D)(2).
 9. Chevron, or a contractor representing Chevron, will inspect the BGT to assess compliance with NMAC § 19.15.17.12, Operational Requirements, at least once monthly and maintain a written record of each inspection for at least five (5) years. The approved inspection form is attached.

Chevron: New Mexico Inspection Form for Below Grade Tanks

Inspection Date: _____

Below Grade Tank (BGT) Location: _____

Does the BGT have adequate freeboard to prevent overflow;	yes	no
---	-----	----

Does the tank have visible leaks or sign of corrosion;	yes	no
--	-----	----

Do tank valves, flanges and hatches have visible leaks;	yes	no
---	-----	----

Is there evidence of significant spillage of produced liquids;	yes	no
--	-----	----

Is this a single or double wall tank; _____

Are berms and/or diversion ditches in place to prevent surface

run-on from entering the BGT;	yes	no
-------------------------------	-----	----

Have visible or measurable layers of oil been removed from

liquid surface fluid;	yes	no
-----------------------	-----	----

BELOW GRADE TANK (BGT) CLOSURE PLAN

SUBMITTED TO:

ENVIRONMENTAL BUREAU,
NEW MEXICO OIL CONSERVATION DIVISION

ON BEHALF OF:

CHEVRON USA INC., CHEVRON MIDCONTINENT, L.P., AND FOUR STAR OIL & GAS
COMPANY
P.O. Box 730
AZTEC, NEW MEXICO 87410
(505) 333-1901

Chevron
San Juan Basin
Below Grade Tank Closure Plan

INTRODUCTION

In accordance with NMAC §§ 19.15.17.9(B)(4) and 19.15.17.13, Chevron (representing Chevron USA Inc, Chevron Midcontinent, L.P., and Four Star Oil & Gas Company) submits this Closure Plan for below grade tanks (BGTs) in New Mexico. This Closure Plan contains standard conditions that attach to multiple BGTs. If needed for a particular BGT, a modified Closure Plan for a proposed alternative closure will be submitted to the New Mexico Oil Conservation Division (NMOCD or the division) for approval prior to closure.

CLOSURE PLAN PROCEDURES AND PROTOCOLS (NMAC §§ 19.15.17.9(C) and 19.15.17.13).

- 1) Chevron, or a contractor acting on behalf of Chevron, will close a BGT within the time periods provided in NMAC § 19.15.17.13(A), or by an earlier date required by NMOCD to prevent an imminent danger to fresh water, public health, or the environment. NMAC § 19.15.17.13(A).
- 2) Chevron, or a contractor acting on behalf of Chevron, will close an existing BGT that does not meet the requirements of NMAC § 19.15.17.11(I)(1 through 4) or is not included in NMAC § 19.15.17.11(I)(5) within five years after June 16, 2008, if not retrofitted to comply with § 19.15.17.11(I)(1 through 4). NMAC § 19.15.17.13(A)(4).
- 3) Chevron shall close an existing below-grade tank that does not meet the requirements of Paragraphs (1) through (4) of Subsection I of 19.15.17.11 NMAC, if not retrofitted to comply with Paragraphs 1) through (4) of Subsection I of 19.15.17.11 NMAC, prior to any sale or change of operator pursuant to 19.15.9.9 NMAC.
- 4) Chevron, or a contractor acting on behalf of Chevron, will close a permitted BGT within 60 days of cessation of the BGT's operation or as required by the transitional provisions of NMAC § 19.15.17.17(B) in accordance with a closure plan that the appropriate division district office approves. NMAC §§ 19.15.17.13(A)(9) and 19.15.17.9(C).
- 5) In accordance with NMAC § 19.15.17.13(J)(1), Chevron will notify the surface owner by certified mail, return receipt requested, of its plans to close a BGT prior to beginning closure activities. Evidence of mailing of the notice to the address of the surface owner shown in the county tax records is sufficient to demonstrate compliance. Chevron will also notify the appropriate division district office verbally or by other means at least 72 hours, but not more than one week, prior to any closure operation. The notice shall include the operator's name and the location to be closed by unit letter, section, township and range. If the closure is associated with a particular well, then the notice shall also include the well's name, number and API number. NMAC § 19.15.17.13(J)(2).

- 6) Chevron, or a contractor acting on behalf of Chevron, will remove liquids and sludge from a BGT prior to implementing a closure method and will dispose of the liquids and sludge in a division approved facility. NMAC § 19.15.17.13(E)(1). A list of Chevron currently approved disposal facilities is included at the end of this document.
- 7) The proposed method of closure for this Closure Plan is waste excavation and removal. NMAC §§ 19.15.17.13 (E)(1).
- 8) Chevron, or a contractor acting on behalf of Chevron, shall remove the below-grade tank and dispose of it in a division-approved facility or recycle, reuse, or reclaim it in a manner that the appropriate division district office approves. When required, prior approval for disposal will be obtained. NMAC § 19.15.17.13(E)(2). Documentation regarding disposal of the BGT and its associated liner, if any, will be included in the closure report.
- 9) Waste generated during closure will be handled and disposed of in accordance with applicable laws. NMAC § 19.15.35.8(C)(1)(m) provides that plastic pit liners may be disposed at a solid waste facility without testing before disposal, provided they are cleaned well.
- 10) Chevron, or a contractor acting on behalf of Chevron, will remove on-site equipment associated with a BGT unless the equipment is required for some other purpose. NMAC § 19.15.17.13(E)(3).
- 11) Chevron, or a contractor acting on behalf of Chevron, will test the soils beneath the BGT to determine whether a release has occurred. At a minimum, 5 point composite samples will be collected along with individual grab samples from any area that is wet, discolored, or showing other evidence of a release. Samples will be analyzed for BTEX, TPH and chlorides to demonstrate that the benzene concentration, as determined by EPA SW-846 methods 8021B or 8260B or EPA method that the division approves, does not exceed 0.2mg/kg; total BTEX concentration, as determined by EPA SW-846 methods 8021B or 8260B or other EPA method that the division approves, does not exceed 50mg/kg; the TPH concentration, as determined by EPA method 418.1 or other EPA method that the division approves, does not exceed 100mg/kg; and the chloride concentration, as determined by EPA method 300.1 or other EPA method that the division approves, does not exceed 250mg/kg; or the background concentration, whichever is greater. Chevron, or a contractor acting on behalf of Chevron, will notify the NMOCD Division District office of its results on form C-141. NMAC § 19.15.17.13(E)(4).
- 12) If Chevron or the division determines that a release has occurred, Chevron will comply with NMAC §§ 19.15.29 and 19.15.30, as appropriate. NMAC § 19.15.17.13(E)(5).
- 13) If the sampling program demonstrates that a release has not occurred or that any release does not exceed the concentrations specified in NMAC § 19.15.17.13(E)(4), Chevron will backfill the excavation with compacted, non-waste containing, earthen materials; construct a division prescribed soil cover; re-contour and re-vegetate the site. The division-prescribed soil cover, recontouring and re-vegetation requirements shall comply with NMAC § 19.15.17.13)(G, H and I). NMAC § 19.15.17.13(E)(6).

- 14) As per NMAC § 19.15.17.13(G)(1), once Chevron has closed a BGT or is no longer using the BGT or an area associated with the BGT, Chevron will reclaim the BGT location and all areas associated with it including associated access roads not needed by the surface estate owner to a safe and stable condition that blends with the surrounding undisturbed area. Chevron will substantially restore impacted surface area to the condition that existed prior to its oil and gas operations by placement of soil cover as provided in NMAC § 19.15.17.13(H) (see below), re-contour the location and associated areas to a contour that approximates the original contour and blends with the surrounding topography, and re-vegetate according to NMAC § 19.15.17.13(I). NMAC § 19.15.17.13(G)(1).
- 15) Chevron may propose an alternative to the re-vegetation requirement of NMAC § 19.15.17.13(G)(1) if it demonstrates that the proposed alternative effectively prevents erosion, and protects fresh water, human health and the environment. The proposed alternative must be agreed upon in writing by the surface owner. Chevron will submit the proposed alternative, with written documentation that the surface owner agrees to the alternative, to the division for approval. NMAC § 19.15.17.13(G)(2).
- 16) Soil cover for closures where Chevron has removed the pit contents or remediated the contaminated soil to the division's satisfaction will consist of the background thickness of topsoil or one foot of suitable material to establish vegetation at the site, whichever is greater. NMAC § 19.15.17.13(H)(1).
- 17) Chevron will construct the soil cover to the site's existing grade and prevent ponding of water and erosion of the cover material. NMAC § 19.15.17.13(H)(3).
- 18) As per NMAC § 19.15.17.13(I)(1) and 19.15.17.13(G)(2), Chevron will seed or plant disturbed areas during the first growing season after it is no longer using a BGT or an area associated with the BGT including access roads unless needed by the surface estate owner as evidenced by a written agreement with the surface estate owner, if any and written approval by NMOCD.
- 19) Seeding will be accomplished by drilling on the contour whenever practical or by other division approved methods. Chevron will obtain vegetative cover that equals 70% of the native perennial vegetative cover (un-impacted by overgrazing, fire or other intrusion damaging to native vegetation) consisting of at least three native plant species, including at least one grass, but not including noxious weeds, and maintain that cover through two successive growing seasons. During the two growing seasons that prove viability, Chevron will not artificially irrigate the vegetation. NMAC § 19.15.17.13(I)(2).
- 20) Chevron will notify the division when it has seeded or planted and when it successfully achieves re-vegetation. NMAC § 19.15.17.13(I)(5).
- 21) Seeding or planting will be repeated until Chevron successfully achieves the required vegetative cover. NMAC § 19.15.17.13(I)(3).

- 22) When conditions are not favorable for the establishment of vegetation, such as periods of drought, the division may allow Chevron to delay seeding or planting until soil moisture conditions become favorable or may require Chevron to use additional cultural techniques such as mulching, fertilizing, irrigating, fencing or other practices. NMAC § 19.15.17.13(I)(4).
- 23) As per NMAC § 19.15.17.13(K), within 60 days of closure completion, Chevron will submit a closure report containing the elements required by NMAC § 19.15.17.13(K) including:
- i) Confirmation sampling results,
 - ii) A plot plan ,
 - iii) Details on back-filling, capping and covering, where applicable, including revegetation application rates and seeding technique,
 - iv) Proof of closure notice to the surface owner, if any, and the division,
 - v) Name and permit number of disposal facility, and
 - vi) Photo documentation.
- 24) The closure report will be filed on NMOCD Form C-144. Chevron will certify that all information in the closure report and attachments is correct and that it has complied with all applicable closure requirements and conditions specified in the approved closure plan. NMAC § 19.15.17.13(K).
- 25) As requested, the following are the current Chevron approved Waste Disposal Sites for the identified waste streams:

Soils and Sludges

- i) Envirotech Inc. Soil Remediation Facility, Permit No. NM-01-0011

Solids

- ii) San Juan County Regional Land Fill (NMAC § 19.15.35.8 items only, with prior NMOCD approval when required)

Liquids

- i) Key Energy Disposal Facility, Permit No. NM-01-0009
- ii) Basin Disposals Facility, Permit No. NM-01-005.

- 26) These waste disposal sites are subject to change if their certification is lost or they are closed or other more appropriate, equally protective sites become available. Chevron will provide notice if such a change is affected.