

District I
1625 N. French Dr., Hobbs, NM 88240
District II
811 South First, Artesia, NM 88210
District III
1000 Rio Brazos Road, Aztec, NM 87410
District IV
2040 South Pacheco, Santa Fe, NM 87505

State of New Mexico
Energy Minerals and Natural
Resources

Form C-101
Revised March 17, 1999

Submit to appropriate District Office
State Lease - 6 Copies
Fee Lease - 5 Copies

Oil Conservation Division
2040 South Pacheco
Santa Fe, NM 87505

AMENDED REPORT

APPLICATION FOR PERMIT TO DRILL, RE-ENTER, DEEPEN, PLUGBACK, OR ADD A ZONE

¹ Operator Name and Address El Paso E & P COMPANY, L.P. PO Box 190 Raton, NM 87740		² OGRID Number 180514
		³ API Number 30-007-20688 SD-06-01
³ Property Code 25179	⁵ Property Name Vermejo Park Ranch (VPR)	⁶ Well No. VPR D 310

⁷ Surface Location

UL or lot no.	Section	Township	Range	Lot Idn	Feet from the	North/South line	Feet from the	East/West line	County
H	2	30N	17E	H	2413	North	101	EAST	Colfax

⁸ Proposed Bottom Hole Locations If Different From Surface

UL or lot no.	Section	Township	Range	Lot Idn	Feet from the	North/South line	Feet from the	East/West line	County
K	2	30N	17E	K	1732	FNL	2302	FWL	Colfax
B	2	30N	17E	B	524	FNL	2333	FWL	Colfax
A	2	30N	17E	A	133	FNL	946	FEL	Colfax

⁹ Proposed Pool 1 Vermejo	¹⁰ Proposed Pool 2 Raton
---	--

¹¹ Work Type Code N	¹² Well Type Code G	¹³ Cable/Rotary ROTARY/MUD MOTOR	¹⁴ Lease Type Code P	¹⁵ Ground Level Elevation 8217' (GL)
¹⁶ Multiple Yes	¹⁷ Proposed Depth 1600' TVD	¹⁸ Formation Trinidad	¹⁹ Contractor Not Available	²⁰ Spud Date February 15, 2006

²¹ Proposed Casing and Cement Program

Hole Size	Casing Size	Casing weight/foot	Setting Depth	Sacks of Cement	Estimated TOC
12 1/4"	9 5/8"	36#	335'	150 sx.	SURFACE
8 3/4"	7	23#	1900' TVD	450 sx.	SURFACE
6 1/8"	4 1/2"	10.5#	5400' MD	NA	NA
6 1/8"	4 1/2"	10.5#	5400' MD	NA	NA
6 1/8"	4 1/2"	10.5#	5400' MD	NA	NA

22 Describe the proposed program. If this application is to DEEPEN or PLUG BACK, give the data on the present productive zone and proposed new productive zone. Describe the blowout prevention program, if any. Use additional sheets if necessary.

(Change of Location.)

1. Drill 12 1/4" hole to +/- 335' with air.
2. Set 9 5/8" surface casing and cement to surface with 150 sks of cement.
3. Drill 8 3/4" hole to 1900' with air.
4. Set 7" production casing to TD and cement to surface.
5. Drill (3) - horizontal laterals with 6 1/8" directional tools. Set 4 1/2" perforated liners in horizontal liners.

²³ I hereby certify that the information given above is true and complete to the best of my knowledge and belief.

Signature: *Shirley Mitchell*

Printed name: Shirley A. Mitchell

Title: Regulatory Analyst

Date: 08/18/2006

Phone: (505) 445-6724

OIL CONSERVATION DIVISION

Approved by:

Title: **DISTRICT SUPERVISOR**

Approval Date: 9-13-06

Expiration Date: —

Conditions of Approval:

Attached ☐

District I
1625 N. French Dr., Hobbs, NM 88240
District II
1301 W. Grand Avenue, Artesia, NM 88210
District III
1900 Rio Brazos Rd., Aztec, NM 87410
District IV
1220 S. St. Francis Dr., Santa Fe, NM 87505

State of New Mexico
Energy, Minerals & Natural Resources Department
OIL CONSERVATION DIVISION
1220 South St. Francis Dr.
Santa Fe, NM 87505

Form C-102
Revised October 12, 2005
Submit to Appropriate District Office
State Lease - 4 Copies
Fee Lease - 3 Copies
☐ AMENDED REPORT

WELL LOCATION AND ACREAGE DEDICATION PLAT

¹ API Number	² Pool Code 97046	³ Pool Name CASTLE ROCK PARK - VERMEJO GAS
⁴ Property Code 25179	⁵ Property Name VERMEJO PARK RANCH	⁶ Well Number VPR'D-310
⁷ OGRID No. 180514	⁸ Operator Name EL PASO E&P Company, L.P.	⁹ Elevation 8217'

¹⁰ Surface Location

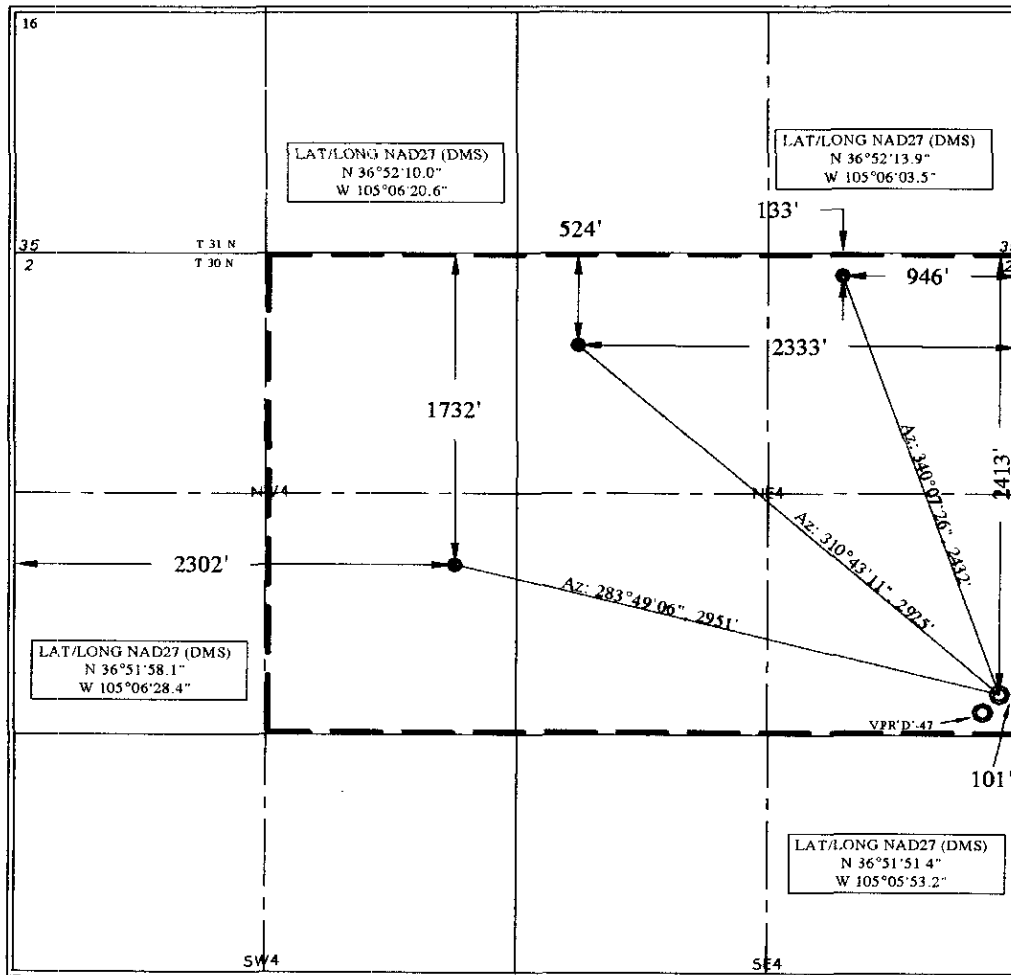
UL or lot no. H	Section 2	Township T 30 N	Range R 17 E	Lot Idn H	Feet from the 2413	North/South line NORTH	Feet from the 101	East/West line EAST	County COLFAX
--------------------	--------------	--------------------	-----------------	--------------	-----------------------	---------------------------	----------------------	------------------------	------------------

¹¹ Bottom Hole Location If Different From Surface

UL or lot no. K	Section 2	Township T 30 N	Range R 17 E	Lot Idn K	Feet from the 1732	North/South line FNL	Feet from the 2302	East/West line FWL	County COLFAX
B	2	T 30 N	R 17 E	B	524	FNL	2333	FWL	COLFAX
A	2	T 30 N	R 17 E	A	133	FNL	946	FEL	COLFAX

¹² Dedicated Acres	¹³ Joint or Infill	¹⁴ Consolidation Code	¹⁵ Order No.
-------------------------------	-------------------------------	----------------------------------	-------------------------

NO ALLOWABLE WILL BE ASSIGNED TO THIS COMPLETION UNTIL ALL INTERESTS HAVE BEEN CONSOLIDATED OR A NON-STANDARD UNIT HAS BEEN APPROVED BY THE DIVISION



¹⁷ OPERATOR CERTIFICATION

I hereby certify that the information contained herein is true and complete to the best of my knowledge and belief, and that this organization either owns a working interest or unleased mineral interest in the land including the proposed bottom hole location or has a right to drill this well at this location pursuant to a contract with an owner of such a mineral or working interest, or to a voluntary pooling agreement or a compulsory pooling order heretofore entered by the division.

Signature: *Shirley Mitchell* Date: 8-16-06

Printed Name: SHIRLEY MITCHELL

¹⁸ SURVEYOR CERTIFICATION

I hereby certify that the well location shown on this plat was plotted from field notes of actual surveys made by me or under my supervision, and that the same is true and correct to the best of my belief.

Date of Survey: August 15, 2006

Signature and Seal of Professional Surveyor:

Signature: *Joe Shields*
Certificate Number: NM LSN 5103