

District I
1625 N. French Dr., Hobbs, NM 88240
District II
1301 W. Grand Avenue, Artesia, NM 88210
District III
1000 Rio Brazos Road, Aztec, NM 87410
District IV
1220 S. St. Francis Dr., Santa Fe, NM 87505

State of New Mexico
Energy Minerals and Natural Resources

Form C-101
May 27, 2004

Oil Conservation Division
1220 South St. Francis Dr.
Santa Fe, NM 87505

Submit to appropriate District Office

☒ AMENDED REPORT

APPLICATION FOR PERMIT TO DRILL, RE-ENTER, DEEPEN, PLUGBACK, OR ADD A ZONE

¹ Operator Name and Address EL PASO E & P COMPANY, L.P. PO BOX 190 RATON, NM 87740		² OGRID Number 180514
		³ API Number 30-007-20488
⁴ Property Code 24648	⁵ Property Name VERMEJO PARK RANCH (VPR)	⁶ Well No. VPR A 144
⁹ Proposed Pool 1 VERMEJO		¹⁰ Proposed Pool 2 RATON

7 Surface Location

UL or lot no.	Section	Township	Range	Lot Idn	Feet from the	North/South line	Feet from the	East/West line	County
K	28	32N	19E	K	1929	South	1669	West	Colfax

8 Proposed Bottom Hole Location If Different From Surface

UL or lot no.	Section	Township	Range	Lot Idn	Feet from the	North/South line	Feet from the	East/West line	County
I	29	32N	19E	I	2156	South	16	East	Colfax

Additional Well Information

¹¹ Work Type Code N	¹² Well Type Code G	¹³ Cable/Rotary Rotary/Fluid	¹⁴ Lease Type Code P	¹⁵ Ground Level Elevation 8,409'
¹⁶ Multiple Yes	¹⁷ Proposed Depth 1272' TVD 3000' MD	¹⁸ Formation Lower Vermejo	¹⁹ Contractor Turner	²⁰ Spud Date April 1, 2007
Depth to Groundwater		Distance from nearest fresh water well		Distance from nearest surface water
Pit: Liner: Synthetic <input type="checkbox"/> _____ mils thick Clay <input type="checkbox"/> Pit Volume: _____ bbls Drilling Method: Rotary/Fluid Closed-Loop System <input type="checkbox"/> Fresh Water <input type="checkbox"/> Brine <input type="checkbox"/> Diesel/Oil-based <input type="checkbox"/> Gas/Air <input checked="" type="checkbox"/>				

21 Proposed Casing and Cement Program

Hole Size	Casing Size	Casing weight/foot	Setting Depth	Sacks of Cement	Estimated TOC
11"	8 5/8"	23#	348'	100 sx	SURFACE
7 7/8"	5 1/2"	15.5#	2746'	425 sx	SURFACE
4 3/4"	3 1/2"	9.3#	1013' - 3000' MD	None	Liner

²² Describe the proposed program. If this application is to DEEPEN or PLUG BACK, give the data on the present productive zone and proposed new productive zone. Describe the blowout prevention program, if any. Use additional sheets if necessary.

(Change in Bottom Hole horizontal lateral drilling plan.)

1. Set RBP in 5 1/2" casing at 1005'.
2. Set Whip stock in 5 1/2" casing at 1003'.
3. Cut window in 5 1/2" casing at 997' - 1003'.
4. Drill a 4 3/4" hole in a 286' (20 °) Radius curve to a 1700' horizontal lateral in the lower Vermejo coal (Top 1289' TVD).
5. Run 3 1/2" liner (No Cement) the length of the lateral.
6. Retrieve whip stock and RBP.
7. Clean out well bore, run production equipment, and put well back on production.

²³ I hereby certify that the information given above is true and complete to the best of my knowledge and belief. I further certify that the drilling pit will be constructed according to NMOC guidelines ☐, a general permit ☐, or an (attached) alternative OCD-approved plan ☐.

Printed name: Albert J. O'Neil		OIL CONSERVATION DIVISION	
Title: Drilling Consultant		Approved by: <i>Al Martin</i>	
E-mail Address: albert.o'neil@elpaso.com		Title: DISTRICT SUPERVISOR	
Date: 02/16/2007		Approval Date: 2/21/07 Expiration Date: 2/21/08	
Phone: (505) 445-6706		Conditions of Approval Attached <input type="checkbox"/>	

District I
1625 N. French Dr., Hobbs, NM 88240
District II
1301 W. Grand Avenue, Artesia, NM 88210
District III
1000 Rio Brazos Rd., Aztec, NM 87410
District IV
1220 S. St. Francis Dr., Santa Fe, NM 87505

State of New Mexico
Energy, Minerals & Natural Resources Department
OIL CONSERVATION DIVISION
1220 South St. Francis Dr.
Santa Fe, NM 87505

Form C-102
Revised October 12, 2005
Submit to Appropriate District Office
State Lease - 4 Copies
Fee Lease - 3 Copies

☐ AMENDED REPORT

WELL LOCATION AND ACREAGE DEDICATION PLAT

¹ API Number		² Pool Code 96970	³ Pool Name STUBBLEFIELD CANYON RATON - VERMEJO GAS
⁴ Property Code 24648	⁵ Property Name VERMEJO PARK RANCH		⁶ Well Number VPR'A'-144
⁷ OGRID No. 180514	⁸ Operator Name EL PASO E&P Company, L.P.		⁹ Elevation 8409'

¹⁰ Surface Location

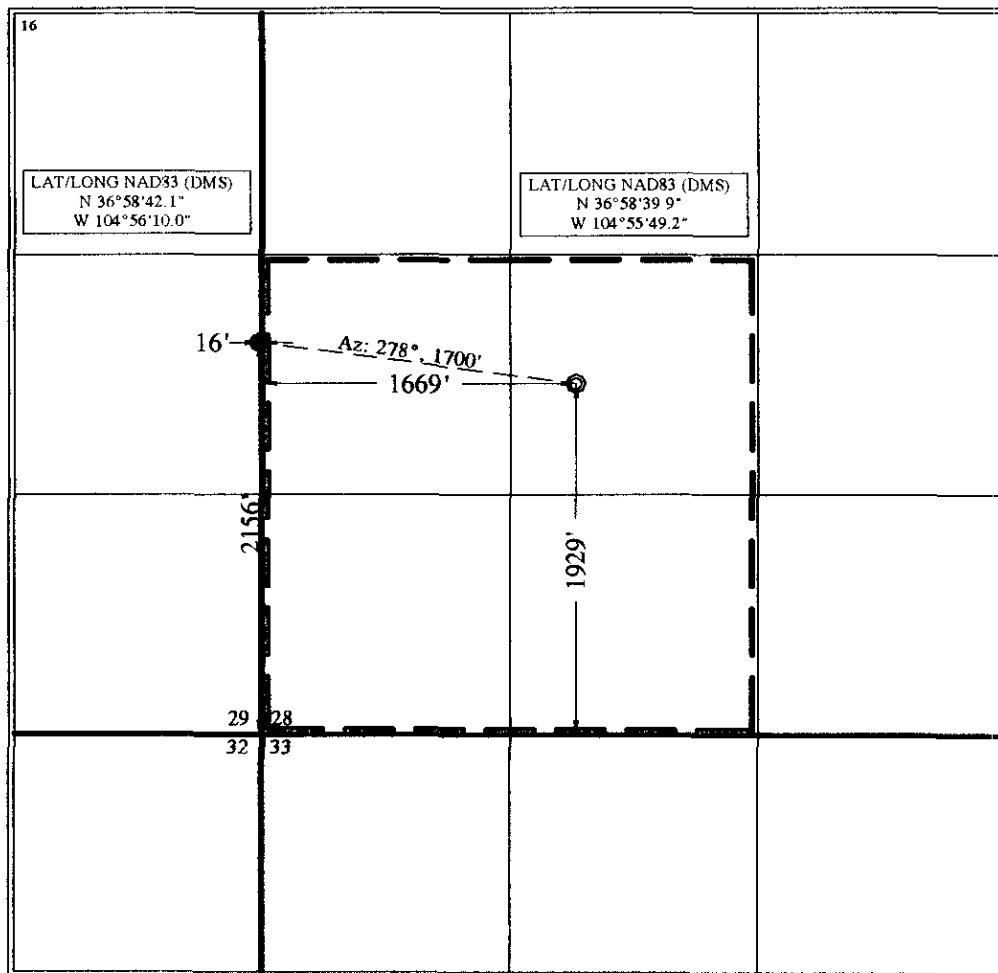
UL or lot no. K	Section 28	Township T 32 N	Range R 19 E	Lot Idn K	Feet from the 1929	North/South line SOUTH	Feet from the 1669	East/West line WEST	County COLFAX
--------------------	---------------	--------------------	-----------------	--------------	-----------------------	---------------------------	-----------------------	------------------------	------------------

¹¹ Bottom Hole Location If Different From Surface

UL or lot no. I	Section 29	Township T 32 N	Range R 19 E	Lot Idn I	Feet from the 2156	North/South line SOUTH	Feet from the 16	East/West line EAST	County COLFAX
--------------------	---------------	--------------------	-----------------	--------------	-----------------------	---------------------------	---------------------	------------------------	------------------

¹² Dedicated Acres	¹³ Joint or Infill	¹⁴ Consolidation Code	¹⁵ Order No.
-------------------------------	-------------------------------	----------------------------------	-------------------------

NO ALLOWABLE WILL BE ASSIGNED TO THIS COMPLETION UNTIL ALL INTERESTS HAVE BEEN CONSOLIDATED OR A NON-STANDARD UNIT HAS BEEN APPROVED BY THE DIVISION



¹⁷ OPERATOR CERTIFICATION

I hereby certify that the information contained herein is true and complete to the best of my knowledge and belief, and that this organization either owns a working interest or unleased mineral interest in the land including the proposed bottom hole location or has a right to drill this well at this location pursuant to a contract with an owner of such a mineral or working interest, or to a voluntary pooling agreement or a compulsory pooling order heretofore entered by the division.

Signature: *A.J. O'Neil* Date: 2/5/07
Printed Name: A.J. O'Neil

¹⁸ SURVEYOR CERTIFICATION

I hereby certify that the well location shown on this plat was plotted from field notes of actual surveys made by me or under my supervision, and that the same is true and correct to the best of my belief.

December 8, 2006

Date of Survey

Signature and Seal of Professional Surveyor:

Signature: *Qu. Shields*
Certificate Number: NM LS NO. 5103