

District I  
1625 N. French Dr., Hobbs, NM 88240  
District II  
1301 W. Grand Avenue, Artesia, NM 88210  
District III  
1000 Rio Brazos Road, Aztec, NM 87410  
District IV  
1220 S. St. Francis Dr., Santa Fe, NM 87505

State of New Mexico  
Energy Minerals and Natural Resources

Form C-101  
May 27, 2004

Oil Conservation Division  
1220 South St. Francis Dr.  
Santa Fe, NM 87505

Submit to appropriate District Office

☐ AMENDED REPORT

**APPLICATION FOR PERMIT TO DRILL, RE-ENTER, DEEPEN, PLUGBACK, OR ADD A ZONE**

<sup>1</sup> Operator Name and Address <b>El Paso E &amp; P Comapny, L.P. PO Box 190 Raton, NM 87740</b>		<sup>2</sup> OGRID Number <b>180514</b>
		<sup>3</sup> API Number <b>30-007-20834</b>
<sup>4</sup> Property Code <b>24648</b>	<sup>5</sup> Property Name <b>Vermejo Park Ranch</b>	<sup>6</sup> Well No. <b>VPR A 268</b>
<sup>9</sup> Proposed Pool 1 <b>Stubblefield Canyon - Vermejo Gas</b>		<sup>10</sup> Proposed Pool 2

**<sup>7</sup> Surface Location**

UL or lot no	Section	Township	Range	Lot Idn	Feet from the	North/South line	Feet from the	East/West line	County
<b>K</b>	<b>20</b>	<b>31N</b>	<b>20E</b>	<b>K</b>	<b>1344</b>	<b>South</b>	<b>1371</b>	<b>West</b>	<b>Colfax</b>

**<sup>8</sup> Proposed Bottom Hole Location If Different From Surface**

UL or lot no.	Section	Township	Range	Lot Idn	Feet from the	North/South line	Feet from the	East/West line	County

**Additional Well Information**

<sup>11</sup> Work Type Code <b>N</b>	<sup>12</sup> Well Type Code <b>G</b>	<sup>13</sup> Cable/Rotary <b>Rotary/Air</b>	<sup>14</sup> Lease Type Code <b>P</b>	<sup>15</sup> Ground Level Elevation <b>8,213'</b>
<sup>16</sup> Multiple <b>Yes</b>	<sup>17</sup> Proposed Depth <b>2,640'</b>	<sup>18</sup> Formation <b>Vermejo</b>	<sup>19</sup> Contractor <b>Pense</b>	<sup>20</sup> Spud Date <b>June 15, 2007</b>
Depth to Groundwater		Distance from nearest fresh water well		Distance from nearest surface water
Pit: Liner: Synthetic <input type="checkbox"/> _____ mils thick Clay <input type="checkbox"/> Pit Volume: _____ bbls Drilling Method: _____				
Closed-Loop System <input type="checkbox"/> Fresh Water <input type="checkbox"/> Brine <input type="checkbox"/> Diesel/Oil-based <input type="checkbox"/> Gas/Air <input checked="" type="checkbox"/>				

**<sup>21</sup> Proposed Casing and Cement Program**

Hole Size	Casing Size	Casing weight/foot	Setting Depth	Sacks of Cement	Estimated TOC
<b>11"</b>	<b>8 5/8"</b>	<b>23#</b>	<b>330'</b>	<b>100 sks</b>	<b>Surface</b>
<b>7 7/8"</b>	<b>5 1/2"</b>	<b>15.5#</b>	<b>2,640'</b>	<b>375 sks</b>	<b>Surface</b>

<sup>22</sup> Describe the proposed program. If this application is to DEEPEN or PLUG BACK, give the data on the present productive zone and proposed new productive zone. Describe the blowout prevention program, if any. Use additional sheets if necessary.

1. Drill 11" hole to +/- 330' with air.
2. Set 8 5/8" surface casing and cement to surface with 100 sks of cement.
3. Drill 7 7/8" hole to 2,640' with air. Run open hole logs.
4. Set 5 1/2" production casing to TD and cement to surface. Cement volumes calculated from open hole logs.
5. Perforate and stimulate the Vermejo and/or Raton Coals. Clean out well bore and run production equipment.

<sup>23</sup> I hereby certify that the information given above is true and complete to the best of my knowledge and belief. I further certify that the drilling pit will be constructed according to NMOCD guidelines ☐, a general permit ☐, or an (attached) alternative OCD-approved plan ☐.

Printed name: **William M. Ordemann** *WMO 6-4-07*  
Title: **Drilling Superintendent**

E-mail Address: **Bill.Ordemann@Elpaso.com**

Date: **June 5, 2007**

Phone: (505) 445-6724

**OIL CONSERVATION DIVISION**

Approved by:

*Ed Martin*

Title:

**DISTRICT SUPERVISOR**

Approval Date: **6/7/07**

Expiration Date: **6/7/08**

Conditions of Approval Attached ☐

District I  
1625 N. French Dr., Hobbs, NM 88240  
District II  
1301 W. Grand Avenue, Artesia, NM 88210  
District III  
1000 Rio Brazos Rd., Aztec, NM 87410  
District IV  
1220 S. St. Francis Dr., Santa Fe, NM 87505

State of New Mexico  
Energy, Minerals & Natural Resources Department  
**OIL CONSERVATION DIVISION**  
1220 South St. Francis Dr.  
Santa Fe, NM 87505

Form C-102  
Revised October 12, 2005  
Submit to Appropriate District Office  
State Lease - 4 Copies  
Fee Lease - 3 Copies

☐ AMENDED REPORT

**WELL LOCATION AND ACREAGE DEDICATION PLAT**

<sup>1</sup> API Number <b>30-007-20834</b>	<sup>2</sup> Pool Code <b>96970</b>	<sup>3</sup> Pool Name <b>STUBBLEFIELD CANYON RATON - VERMEJO GAS</b>
<sup>4</sup> Property Code <b>24648</b>	<sup>5</sup> Property Name <b>VERMEJO PARK RANCH</b>	<sup>6</sup> Well Number <b>VPR'A'-268</b>
<sup>7</sup> OGRID No. <b>180514</b>	<sup>8</sup> Operator Name <b>EL PASO E&amp;P Company, L.P.</b>	<sup>9</sup> Elevation <b>8213'</b>

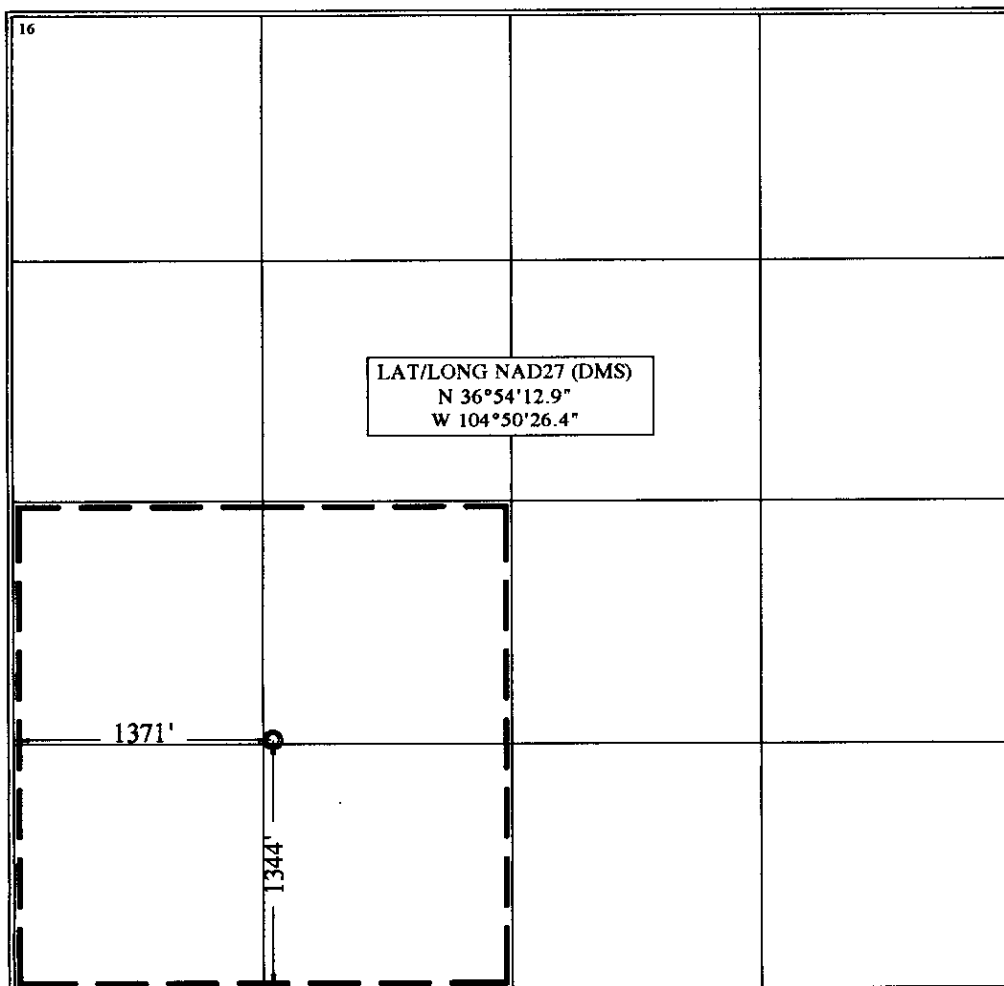
**<sup>10</sup> Surface Location**

UL or lot no. <b>K</b>	Section <b>20</b>	Township <b>T 31 N</b>	Range <b>R 20 E</b>	Lot Idn <b>K</b>	Feet from the <b>1344</b>	North/South line <b>SOUTH</b>	Feet from the <b>1371</b>	East/West line <b>WEST</b>	County <b>COLFAX</b>
---------------------------	----------------------	---------------------------	------------------------	---------------------	------------------------------	----------------------------------	------------------------------	-------------------------------	-------------------------

**<sup>11</sup> Bottom Hole Location If Different From Surface**

UL or lot no.	Section	Township	Range	Lot Idn	Feet from the	North/South line	Feet from the	East/West line	County
<sup>12</sup> Dedicated Acres <sup>13</sup> Joint or Infill <sup>14</sup> Consolidation Code <sup>15</sup> Order No.									

**NO ALLOWABLE WILL BE ASSIGNED TO THIS COMPLETION UNTIL ALL INTERESTS HAVE BEEN CONSOLIDATED OR A NON-STANDARD UNIT HAS BEEN APPROVED BY THE DIVISION**



**<sup>17</sup> OPERATOR CERTIFICATION**

I hereby certify that the information contained herein is true and complete to the best of my knowledge and belief, and that this organization either owns a working interest or unleased mineral interest in the land including the proposed bottom hole location or has a right to drill this well at this location pursuant to a contract with an owner of such a mineral or working interest, or to a voluntary pooling agreement or a compulsory pooling order heretofore entered by the division.

*William M Oredemann*   **6-4-07**  
Signature   Date  
**William M Oredemann**  
Printed Name

**<sup>18</sup> SURVEYOR CERTIFICATION**

I hereby certify that the well location shown on this plat was plotted from field notes of actual surveys made by me or under my supervision, and that the same is true and correct to the best of my belief.

September 28, 2006

Date of Survey

Signature and Seal of Professional Surveyor:

*Joe Shields*  
Certificate Number   NM LSN. 5103