

District I
1625 N. French Dr., Hobbs, NM 88240
District II
1301 W. Grand Avenue, Artesia, NM 88210
District III
1000 Rio Brazos Road, Aztec, NM 87410
District IV
1220 S. St. Francis Dr., Santa Fe, NM 87505

State of New Mexico
Energy Minerals and Natural Resources

Form C-101
May 27, 2004

Oil Conservation Division
1220 South St. Francis Dr.
Santa Fe, NM 87505

Submit to appropriate District Office

☐ AMENDED REPORT

2008 FEB 11 PM 3 19

APPLICATION FOR PERMIT TO DRILL, RE-ENTER, DEEPEN, PLUGBACK, OR ADD A ZONE

| | | |
|---|---|--|
| ¹ Operator Name and Address EL PASO E & P COMPANY, L.P. PO BOX 190 RATON, NM 87740 | | ² OGRID Number 180514 |
| | | ³ API Number 30-007-20938 |
| ⁴ Property Code 24648 | ⁵ Property Name VERMEJO PARK RANCH (VPR) | ⁶ Well No. VPR A 06A |
| ⁹ Proposed Pool 1 DAKOTA | | ¹⁰ Proposed Pool 2 NIOBRARA |

⁷ Surface Location

| UL or lot no. | Section | Township | Range | Lot Idn | Feet from the | North/South line | Feet from the | East/West line | County |
|---------------|-----------|------------|------------|----------|---------------|------------------|---------------|----------------|---------------|
| D | 31 | 32N | 20E | D | 1304 | North | 767 | West | Colfax |

⁸ Proposed Bottom Hole Location If Different From Surface

| UL or lot no. | Section | Township | Range | Lot Idn | Feet from the | North/South line | Feet from the | East/West line | County |
|---------------|-----------|------------|------------|----------|---------------|------------------|---------------|----------------|---------------|
| H | 31 | 32N | 20E | H | 1962 | North | 660 | East | Colfax |

Additional Well Information

| | | | | |
|---|--|---|--|---|
| ¹¹ Work Type Code N | ¹² Well Type Code G | ¹³ Cable/Rotary Rotary/Fluid | ¹⁴ Lease Type Code P | ¹⁵ Ground Level Elevation 8,105' |
| ¹⁶ Multiple Yes | ¹⁷ Proposed Depth 6,805 TVD | ¹⁸ Formation Niobrara | ¹⁹ Contractor Patterson 744 | ²⁰ Spud Date February 25, 2008 |
| Depth to Groundwater | | Distance from nearest fresh water well | | Distance from nearest surface water |
| Pit: Liner: Synthetic <input type="checkbox"/> _____mils thick Clay <input type="checkbox"/> Pit Volume: _____bbls Drilling Method: Rotary/Fluid | | | | |
| Closed-Loop System <input type="checkbox"/> Fresh Water <input type="checkbox"/> Brine <input type="checkbox"/> Diesel/Oil-based <input type="checkbox"/> Gas/Air <input checked="" type="checkbox"/> | | | | |

²¹ Proposed Casing and Cement Program

| Hole Size | Casing Size | Casing weight/foot | Setting Depth | Sacks of Cement | Estimated TOC |
|---------------|--------------------------|--------------------|-------------------|------------------|-----------------------------|
| 26" | 18 5/8" | 87.5# | 350' | 580 sks | SURFACE |
| 16" | 9 5/8" | 40# | 3,000' | 1,630 sks | SURFACE |
| 8 3/4" | 7" | 26# | 6,805' TVD | 730 sks | 200' into 9 5/8" csg |
| | 4 1/2" nerf liner | 11.6# | 8,917 MD | No cement | |

²² Describe the proposed program. If this application is to DEEPEN or PLUG BACK, give the data on the present productive zone and proposed new productive zone. Describe the blowout prevention program, if any. Use additional sheets if necessary.

1. MIRU Drill a 26" hole to 350'. Run 18 5/8" csg and cement with 580 sks cement to surface.
2. Drill a 16" hole to 3,000'. Run 9 5/8" csg with 1.9" parasite string tied in at 2,500' and cement with 1,630 sks cement to surface.
3. Drill 8 3/4" hole directionally to 6,805'. Build at 2/100' up to 10° and hold.
4. Log with triple combo and imaging tool. Run 7" csg and cement at TD.
5. Set Whip stock in 7" casing. Kickoff and lateral depth may change due to mud log.
6. Cut window in 7" csg at 5,156'.
7. Drill a 6 1/8" hole as per directional plan.
8. Run 4 1/2" slotted liner and hang off in casing. (No Cement)
9. Retrieve whip stock and RBP.
10. Clean out well bore, run production equipment, and put well on production.

²³ I hereby certify that the information given above is true and complete to the best of my knowledge and belief. I further certify that the drilling pit will be constructed according to NMOC guidelines ☐, a general permit ☐, or an (attached) alternative OCD-approved plan ☐.

| | | | |
|--|------------------------------|---|--|
| Printed name: Alex Erhardt <i>AE</i> | | OIL CONSERVATION DIVISION | |
| Title: Drilling Engineer | | Approved by: <i>Ed Martin</i> DISTRICT SUPERVISOR | |
| E-mail Address: alex.erhardt@elpaso.com | | Approval Date: 2/12/08 Expiration Date: 2/12/10 | |
| Date: 02/08/2008 | Phone: (303) 291-6443 | Conditions of Approval Attached <input type="checkbox"/> | |

District I
1625 N. French Dr., Hobbs, NM 88240
District II
1301 W. Grand Avenue, Artesia, NM 88210
District III
1000 Rio Brazos Rd., Aztec, NM 87410
District IV
1220 S. St. Francis Dr., Santa Fe, NM 87505

State of New Mexico
Energy, Minerals & Natural Resources Department
OIL CONSERVATION DIVISION
1220 South St. Francis Dr.
Santa Fe, NM 87505

Form C-102
Revised October 12, 2005
Submit to Appropriate District Office
State Lease - 4 Copies
Fee Lease - 3 Copies
☐ AMENDED REPORT

WELL LOCATION AND ACREAGE DEDICATION PLAT

| | | |
|---|---|---|
| ¹ API Number 30-007-20938 | ² Pool Code 96970 | ³ Pool Name STUBBLEFIELD CANYON RATON - VERMEJO GAS |
| ⁴ Property Code 24648 | ⁵ Property Name VERMEJO PARK RANCH | ⁶ Well Number VPR A 06A |
| ⁷ OGRID No. 180514 | ⁸ Operator Name EL PASO E&P Company, L.P. | ⁹ Elevation 8105' |

¹⁰ Surface Location

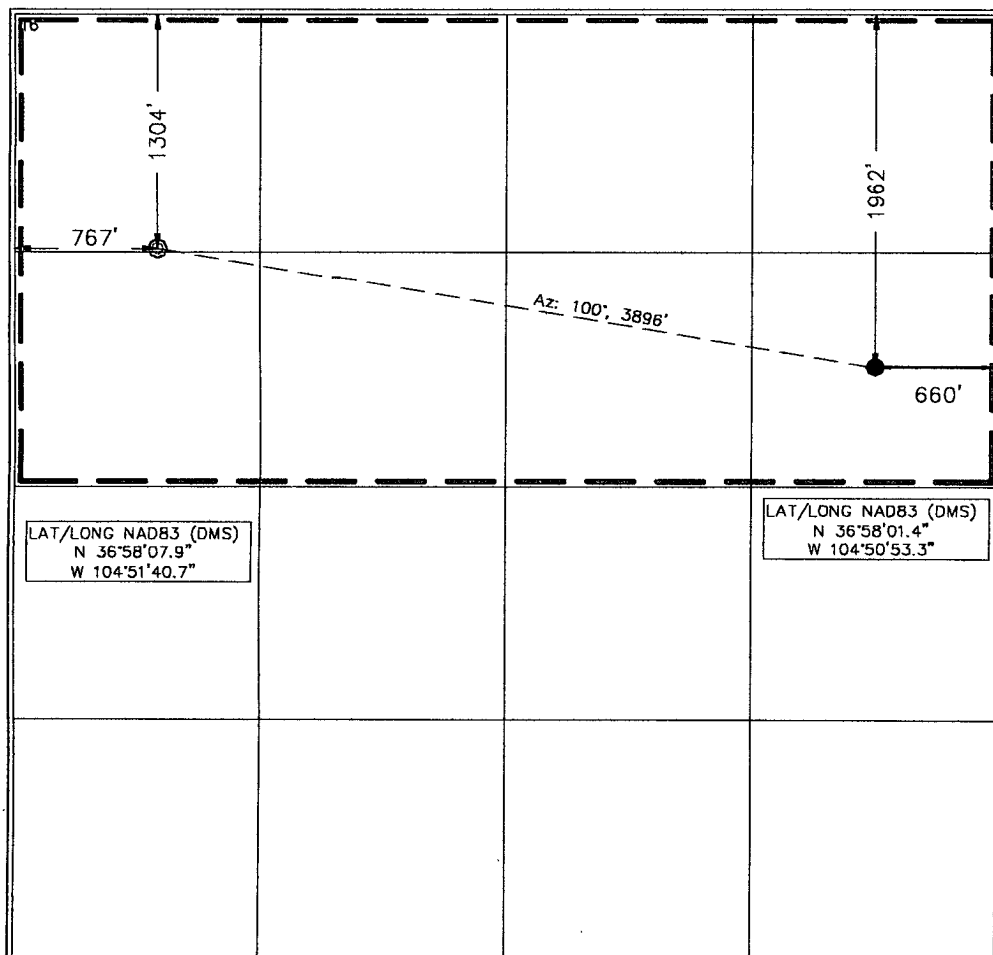
| | | | | | | | | | |
|--------------------|---------------|--------------------|-----------------|--------------|-----------------------|---------------------------|----------------------|------------------------|------------------|
| UL or lot no. D | Section 31 | Township T 32 N | Range R 20 E | Lot Idn D | Feet from the 1304 | North/South line NORTH | Feet from the 767 | East/West line WEST | County COLFAX |
|--------------------|---------------|--------------------|-----------------|--------------|-----------------------|---------------------------|----------------------|------------------------|------------------|

¹¹ Bottom Hole Location If Different From Surface

| | | | | | | | | | |
|--------------------|---------------|--------------------|-----------------|--------------|-----------------------|---------------------------|----------------------|------------------------|------------------|
| UL or lot no. H | Section 31 | Township T 32 N | Range R 20 E | Lot Idn H | Feet from the 1962 | North/South line NORTH | Feet from the 660 | East/West line EAST | County COLFAX |
|--------------------|---------------|--------------------|-----------------|--------------|-----------------------|---------------------------|----------------------|------------------------|------------------|

| | | | |
|-------------------------------|-------------------------------|----------------------------------|-------------------------|
| ¹² Dedicated Acres | ¹³ Joint or Infill | ¹⁴ Consolidation Code | ¹⁵ Order No. |
|-------------------------------|-------------------------------|----------------------------------|-------------------------|

NO ALLOWABLE WILL BE ASSIGNED TO THIS COMPLETION UNTIL ALL INTERESTS HAVE BEEN CONSOLIDATED OR A NON-STANDARD UNIT HAS BEEN APPROVED BY THE DIVISION



¹⁷ OPERATOR CERTIFICATION

I hereby certify that the information contained herein is true and complete to the best of my knowledge and belief, and that this organization either owns a working interest or unleased mineral interest in the land including the proposed bottom hole location or has a right to drill this well at this location pursuant to a contract with an owner of such a mineral or working interest, or to a voluntary pooling agreement or a compulsory pooling order heretofore entered by the division.

Signature: *Shirley Mitchell* Date: _____
Printed Name: Shirley Mitchell

¹⁸ SURVEYOR CERTIFICATION

I hereby certify that the well location shown on this plat was plotted from field notes of actual surveys made by me or under my supervision, and that the same is true and correct to the best of my belief.

January 25, 2008

Date of Survey

Signature and Seal of Professional Surveyor:

Signature: *Jim Shields*
Certificate Number: _____ NM L.S. NO. 5103