

Submit 3 Copies To Appropriate District  
Office  
District I  
1625 N. French Dr., Hobbs, NM 88240  
District II  
1301 W. Grand Ave., Artesia, NM 88210  
District III  
1000 Rio Brazos Rd., Aztec, NM 87410  
District IV  
1220 S. St. Francis Dr., Santa Fe, NM  
87505

State of New Mexico  
Energy, Minerals and Natural Resources

Form C-103  
May 27, 2004

OIL CONSERVATION DIVISION  
1220 South St. Francis Dr.  
Santa Fe, NM 87505

WELL API NO.

30-007-20938

5. Indicate Type of Lease

STATE ☐ FEE ☒

6. State Oil & Gas Lease No.

7. Lease Name or Unit Agreement Name

VPR A

8. Well Number 6A

9. OGRID Number 180514

10. Pool name or Wildcat

SUNDRY NOTICES AND REPORTS ON WELLS

(DO NOT USE THIS FORM FOR PROPOSALS TO DRILL OR TO DEEPEN OR PLUG BACK TO A DIFFERENT RESERVOIR. USE "APPLICATION FOR PERMIT" (FORM C-101) FOR SUCH PROPOSALS.)

1. Type of Well: Oil Well ☐ Gas Well ☒ Other NIOBRARA

2. Name of Operator

EL Paso E & P Company, L.P.

3. Address of Operator

PO BOX 190, RATON, NM 87740

4. Well Location

Unit Letter D : 1304 feet from the North line and 767 feet from the West line

Section 31 Township 32N Range 20E NMPM Colfax County

1<sup>st</sup> Lateral Bottom Hole Location: Unit E, Sec 31, T 32N, R 20E, 1400' FNL, 1306' FWL, Colfax County

11. Elevation (Show whether DR, RKB, RT, GR, etc.)

8,105' (GR)

Pit or Below-grade Tank Application ☐ or Closure ☐

Pit type \_\_\_\_\_ Depth to Groundwater \_\_\_\_\_ Distance from nearest fresh water well \_\_\_\_\_ Distance from nearest surface water \_\_\_\_\_

Pit Liner Thickness: \_\_\_\_\_ mil Below-Grade Tank: Volume \_\_\_\_\_ bbls; Construction Material \_\_\_\_\_

12. Check Appropriate Box to Indicate Nature of Notice, Report or Other Data

NOTICE OF INTENTION TO:

PERFORM REMEDIAL WORK ☐ PLUG AND ABANDON ☐

TEMPORARILY ABANDON ☐ CHANGE PLANS ☐

PULL OR ALTER CASING ☐ MULTIPLE COMPL ☐

OTHER: ☐

SUBSEQUENT REPORT OF:

REMEDIAL WORK ☐ ALTERING CASING ☐

COMMENCE DRILLING OPNS. ☐ P AND A ☐

CASING/CEMENT JOB ☐

OTHER: Change in Bottom Hole Location ☒

- I. Describe proposed or completed operations. (Clearly state all pertinent details, and give pertinent dates, including estimated date of starting any proposed work). SEE RULE 1103. For Multiple Completions: Attach wellbore diagram of proposed completion or recompletion. Work proposed is as follows.

This is the new bottom hole location as per the Final Survey - Completion.

I hereby certify that the information above is true and complete to the best of my knowledge and belief. I further certify that any pit or below-grade tank has been/will be constructed or closed according to NMOCD guidelines ☐, a general permit ☐ or an (attached) alternative OCD-approved plan ☐.

SIGNATURE Shirley Mitchell TITLE Regulatory Analyst DATE 08/06/2008  
Type or print name Shirley Mitchell E-mail address: shirley.mitchell@elpaso.com Telephone No. (505) 445-6785

For State Use Only

APPROVED BY: Ed Martin TITLE DISTRICT SUPERVISOR DATE 8/2/08  
Conditions of Approval (if any):

District I  
1625 N. French Dr., Hobbs, NM 88240  
District II  
1301 W. Grand Avenue, Artesia, NM 88210  
District III  
1000 Rio Brazos Rd., Aztec, NM 87410  
District IV  
1220 S. St. Francis Dr., Santa Fe, NM 87505

State of New Mexico  
Energy, Minerals & Natural Resources Department  
OIL CONSERVATION DIVISION  
1220 South St. Francis Dr.  
Santa Fe, NM 87505

Form C-102  
Revised October 12, 2005  
Submit to Appropriate District Office  
State Lease - 4 Copies  
Fee Lease - 3 Copies

☐ AMENDED REPORT

WELL LOCATION AND ACREAGE DEDICATION PLAT

<sup>1</sup> API Number	<sup>2</sup> Pool Code 97707-96970-	<sup>3</sup> Pool Name NIOBRARA STUBBLEFIELD CANYON-RATON-VERMEJO GAS
<sup>4</sup> Property Code 24648	<sup>5</sup> Property Name VERMEJO PARK RANCH	<sup>6</sup> Well Number VPR A 06A
<sup>7</sup> OGRID No. 180514	<sup>8</sup> Operator Name EL PASO E&P Company, L.P.	<sup>9</sup> Elevation 8105'

<sup>10</sup> Surface Location

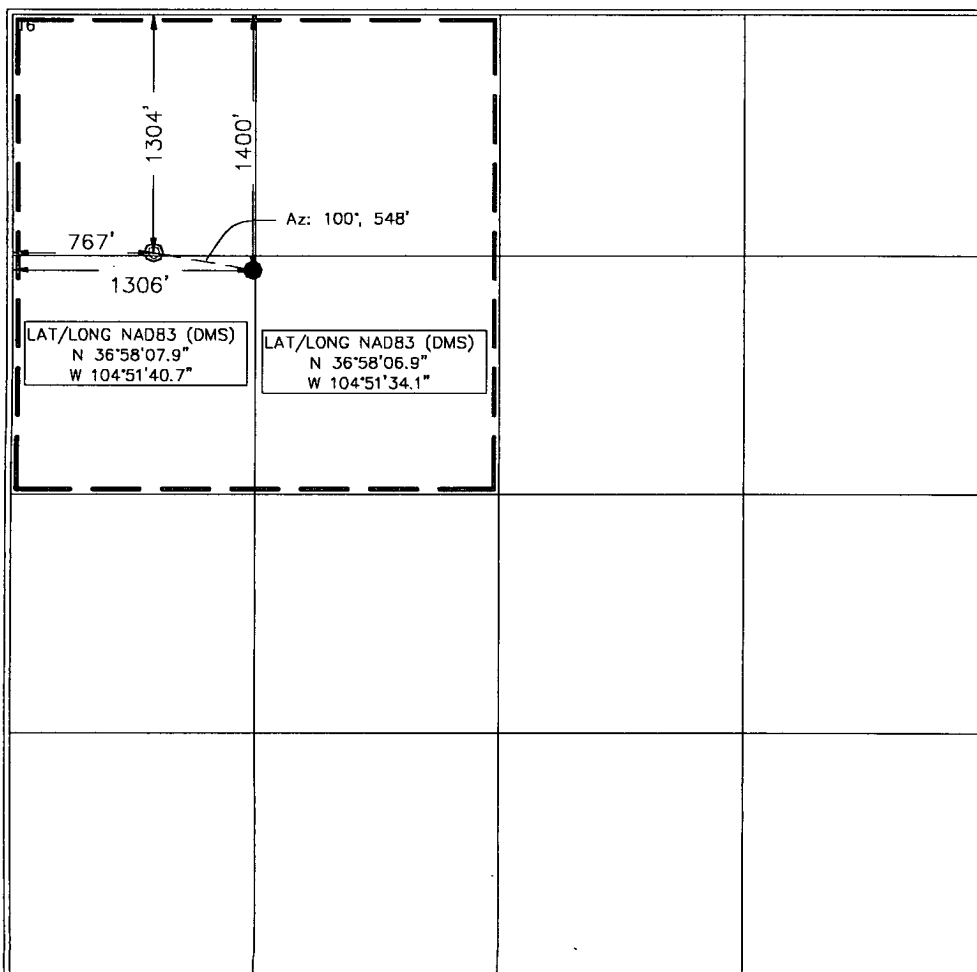
UL or lot no. D	Section 31	Township T 32 N	Range R 20 E	Lot Idn D	Feet from the 1304	North/South line NORTH	Feet from the 767	East/West line WEST	County COLFAX
--------------------	---------------	--------------------	-----------------	--------------	-----------------------	---------------------------	----------------------	------------------------	------------------

<sup>11</sup> Bottom Hole Location If Different From Surface

UL or lot no. E	Section 31	Township T 32 N	Range R 20 E	Lot Idn E	Feet from the 1400	North/South line NORTH	Feet from the 1306	East/West line WEST	County COLFAX
--------------------	---------------	--------------------	-----------------	--------------	-----------------------	---------------------------	-----------------------	------------------------	------------------

<sup>12</sup> Dedicated Acres	<sup>13</sup> Joint or Infill	<sup>14</sup> Consolidation Code	<sup>15</sup> Order No.
-------------------------------	-------------------------------	----------------------------------	-------------------------

NO ALLOWABLE WILL BE ASSIGNED TO THIS COMPLETION UNTIL ALL INTERESTS HAVE BEEN CONSOLIDATED OR A NON-STANDARD UNIT HAS BEEN APPROVED BY THE DIVISION



<sup>17</sup> OPERATOR CERTIFICATION

I hereby certify that the information contained herein is true and complete to the best of my knowledge and belief, and that this organization either owns a working interest or unleased mineral interest in the land including the proposed bottom hole location or has a right to drill this well at this location pursuant to a contract with an owner of such a mineral or working interest, or to a voluntary pooling agreement or a compulsory pooling order heretofore entered by the division.

Signature: Shirley Mitchell Date: 08/06/08

Printed Name: Shirley Mitchell

<sup>18</sup> SURVEYOR CERTIFICATION

I hereby certify that the well location shown on this plat was plotted from field notes of actual surveys made by me or under my supervision, and that the same is true and correct to the best of my belief.

August 3, 2008

Date of Survey

Signature and Seal of Professional Surveyor:

Signature: [Signature]  
Certificate Number:                      NM LS NO. 5103