

District I
1625 N. French Dr., Hobbs, NM 88240
District II
811 South First, Artesia, NM 88210
District III
1000 Rio Brazos Road, Aztec, NM 87410
District IV
1220 S. St Francis Dr., Santa Fe, NM 87505

State of New Mexico
Energy Minerals and Natural Resources

Form C-101
Revised March 17, 1999

Oil Conservation Division
1220 South St. Francis Dr.
Santa Fe, NM 87505

RECEIVED

NOV 10 2003

Submit to appropriate District Office
State Lease - 6 Copies
Fee Lease - 5 Copies

OIL CONSERVATION
DIVISION

☐ AMENDED REPORT

APPLICATION FOR PERMIT TO DRILL, RE-ENTER, DEEPEN, PLUGBACK, OR ADD A ZONE

| | | |
|--|---|--|
| ¹ Operator Name and Address El Paso Energy Raton, L.L.C. PO Box 190 Raton, NM 87740 | | ² OGRID Number 180514 |
| | | ³ API Number 30-007-20469 |
| ³ Property Code 32505 | ⁵ Property Name VERMEJO PARK RANCH | ⁶ Well No. VPR CH 33 |

⁷ Surface Location

| UL or lot no. | Section | Townshi | Range | Lot Idn | Feet from the | North/South line | Feet from the | East/West line | County |
|---------------|---------|---------|-------|---------|---------------|------------------|---------------|----------------|--------|
| G | 13 | 30N | 19E | G | 2228 | NORTH | 1798 | EAST | COLFAX |

⁸ Proposed Bottom Hole Location If Different From Surface

| UL or lot no. | Section | Township | Range | Lot Idn | Feet from the | North/South line | Feet from the | East/West line | County |
|--|---------|----------|-------|---------|---|------------------|---------------|----------------|--------|
| ⁹ Proposed Pool 1 VERMEJO | | | | | ¹⁰ Proposed Pool 2 RATON | | | | |

| | | | | |
|--|---|--|---|--|
| ¹¹ Work Type Code N | ¹² Well Type Code Strat Test | ¹³ Cable/Rotary Continuous Core | ¹⁴ Lease Type Code P | ¹⁵ Ground Level Elevation 7700' |
| ¹⁶ Multiple | ¹⁷ Proposed Depth 2,000 | ¹⁸ Formation Trinidad | ¹⁹ Contractor Dynatec Drilling, Inc. | ²⁰ Spud Date 12-01-03 |

²¹ Proposed Casing and Cement Program

| Hole Size | Casing Size | Casing weight/foot | Setting Depth | Sacks of Cement | Estimated TOC |
|---------------|---------------|--------------------|---------------|-----------------|----------------|
| 7 7/8" | 5 1/2" | 15.5# | 300' | 45 sx | Surface |
| | | | | | |
| | | | | | |
| | | | | | |
| | | | | | |

²² Describe the proposed program. If this application is to DEEPEN or PLUG BACK, give the data on the present productive zone and proposed new productive zone.

Describe the blowout prevention program, if any. Use additional sheets if necessary.

1. Drill 7 7/8" hole to +/- 300' with air.
2. Set 300' of 5 1/2" surface casing and cement to surface.
3. Drill and retrieve continuous core to TD. Run open hole logs.
4. Plug and abandon hole as per instructions from NMOCD.

²³ I hereby certify that the information given above is true and complete to the best of my knowledge and belief.

Signature: *DR Lankford*

Printed name: Donald R. Lankford

Title: Principal Engineer

Date: 11-07-03

Phone: (505) 445-6720

OIL CONSERVATION DIVISION

Approved by: *[Signature]*

Title: **DISTRICT SUPERVISOR**

Approval Date: *11/24/03*

Expiration Date: *11/24/04*

Conditions of Approval:

Attached ☐

District I
1625 N. French Dr., Hobbs, NM 88240
District II
1301 W. Grand Avenue, Artesia, NM 88210
District III
1000 Rio Brazos Rd., Aztec, NM 87410
District IV
1220 S. St. Francis Dr., Santa Fe, NM 87505

State of New Mexico
Energy, Minerals & Natural Resources Department
OIL CONSERVATION DIVISION
1220 South St. Francis Dr.
Santa Fe, NM 87505

Form C-102
Revised August 15, 2000
Submit to Appropriate District Office
State Lease - 4 Copies
Fee Lease - 3 Copies
☐ AMENDED REPORT

WELL LOCATION AND ACREAGE DEDICATION PLAT

| | | |
|---|--|---------------------------------------|
| ¹ API Number | ² Pool Code 96970 | ³ Pool Name STRAT TEST |
| ⁴ Property Code 24648 25174 | ⁵ Property Name VERMEJO PARK RANCH | ⁶ Well Number VPR CH 33 |
| ⁷ OGRID No. 180514 | ⁸ Operator Name EL PASO ENERGY RATON, L.L.C. | ⁹ Elevation 7700' ± |

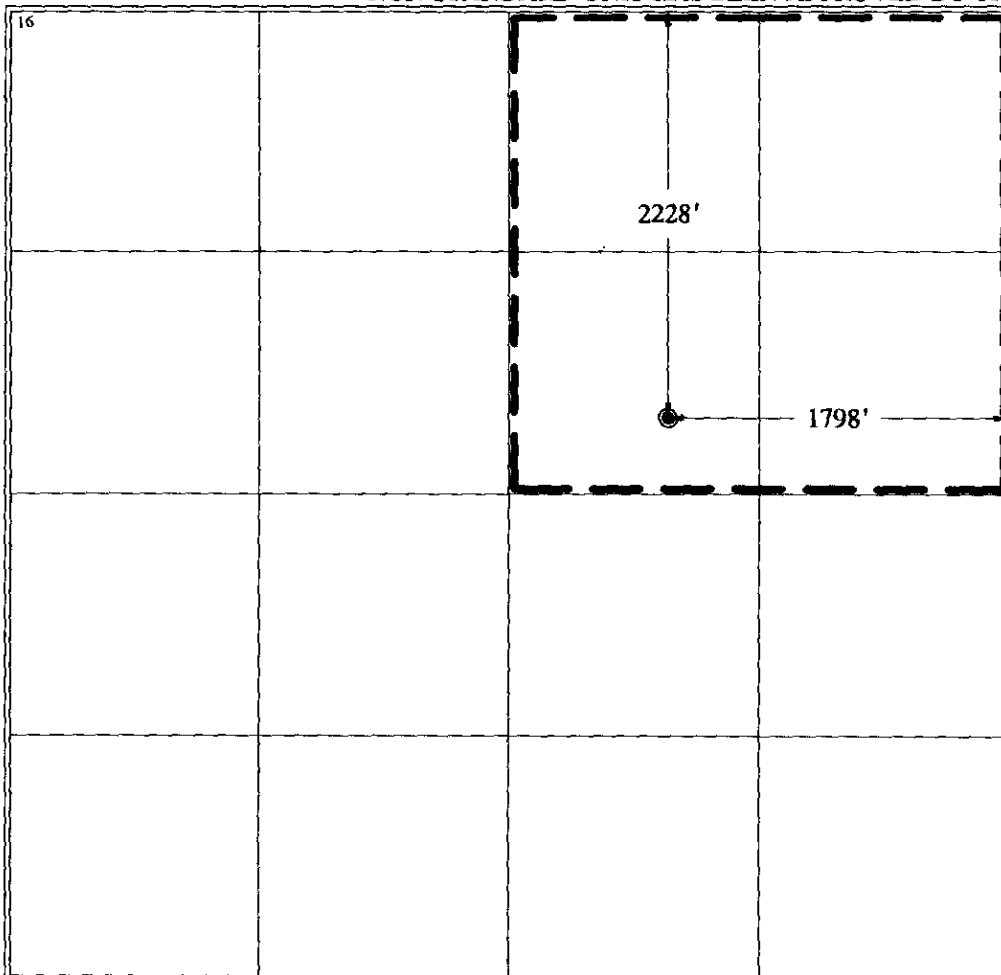
¹⁰ Surface Location

| | | | | | | | | | |
|--------------------|---------------|------------------|---------------|--------------|-----------------------|---------------------------|-----------------------|------------------------|------------------|
| UL or lot no. G | Section 13 | Township 30 N | Range 19 E | Lot Idn G | Feet from the 2228 | North/South line NORTH | Feet from the 1798 | East/West line EAST | County COLFAX |
|--------------------|---------------|------------------|---------------|--------------|-----------------------|---------------------------|-----------------------|------------------------|------------------|

¹¹ Bottom Hole Location If Different From Surface

| | | | | | | | | | |
|-------------------------------|---------|-------------------------------|-------|----------------------------------|---------------|-------------------------|---------------|----------------|--------|
| UL or lot no. | Section | Township | Range | Lot Idn | Feet from the | North/South line | Feet from the | East/West line | County |
| ¹² Dedicated Acres | | ¹³ Joint or Infill | | ¹⁴ Consolidation Code | | ¹⁵ Order No. | | | |

NO ALLOWABLE WILL BE ASSIGNED TO THIS COMPLETION UNTIL ALL INTERESTS HAVE BEEN CONSOLIDATED OR A NON-STANDARD UNIT HAS BEEN APPROVED BY THE DIVISION



¹⁷ OPERATOR CERTIFICATION

I hereby certify that the information contained herein is true and complete to the best of my knowledge and belief.

Signature

DR Lankford

Printed Name DONALD R. LANKFORD

Title SENIOR PETROLEUM ENGINEER

Date

¹⁸ SURVEYOR CERTIFICATION

I hereby certify that the well location shown on this plat was plotted from field notes of actual surveys made by me or under my supervision, and that the same is true and correct to the best of my belief.

November 1, 2003

Date of Survey

Signature and Seal of Professional Surveyor:

James Shields
Certificate Number NM LS NO. 5103