

District I  
1625 N. French Dr., Hobbs, NM 88240  
District II  
811 South First, Artesia, NM 88210  
District III  
1000 Rio Brazos Road, Aztec, NM 87410  
District IV  
1220 South St. Francis Dr., Santa Fe, NM 87505

State of New Mexico  
Energy Minerals and Natural Resources

Form C-101  
Revised March 17, 1999

Oil Conservation Division  
1220 South St. Francis Dr.  
Santa Fe, NM 87505

Submit to appropriate District Office  
State Lease - 6 Copies  
Fee Lease - 5 Copies

☐ AMENDED REPORT

**APPLICATION FOR PERMIT TO DRILL, RE-ENTER, DEEPEN, PLUGBACK, OR ADD A ZONE**

|   |   |   |
|---|---|---|
| <sup>1</sup> Operator Name and Address<br><b>El Paso Energy Raton, L.L. C.<br/>P.O. Box 190<br/>Raton, NM 87740</b> |   | <sup>2</sup> OGRID Number<br><b>180514</b>      |
|   |   | <sup>3</sup> API Number<br><b>30-007- 20490</b> |
| <sup>3</sup> Property Code<br><b>25179</b>  | <sup>5</sup> Property Name<br><b>Vermejo Park Ranch (VPR)</b> | <sup>6</sup> Well No.<br><b>VPR D 122</b>       |

**<sup>7</sup> Surface Location**

| UL or lot no. | Section   | Township   | Range      | Lot Idn  | Feet from the | North/South line | Feet from the | East/West line | County        |
|---------------|-----------|------------|------------|----------|---------------|------------------|---------------|----------------|---------------|
| <b>H</b>      | <b>11</b> | <b>30N</b> | <b>18E</b> | <b>H</b> | <b>2406</b>   | <b>FNL</b>       | <b>1154</b>   | <b>FEL</b>     | <b>Colfax</b> |

**<sup>8</sup> Proposed Bottom Hole Location If Different From Surface**

| UL or lot no. | Section | Township | Range | Lot Idn | Feet from the | North/South line | Feet from the | East/West line | County |
|---------------|---------|----------|-------|---------|---------------|------------------|---------------|----------------|--------|
|               |         |          |       |         |               |                  |               |                |        |

**<sup>9</sup> Proposed Pool 1**

**Castle Rock Park - Vermejo**

**<sup>10</sup> Proposed Pool 2**

|  |   |   |   |   |
|--|---|---|---|---|
| <sup>11</sup> Work Type Code<br><b>N</b> | <sup>12</sup> Well Type Code<br><b>G</b>      | <sup>13</sup> Cable/Rotary<br><b>ROTARY/AIR</b> | <sup>14</sup> Lease Type Code<br><b>P</b>         | <sup>15</sup> Ground Level Elevation<br><b>7940' (GL)</b> |
| <sup>16</sup> Multiple<br><b>Yes</b>     | <sup>17</sup> Proposed Depth<br><b>1,900'</b> | <sup>18</sup> Formation<br><b>Vermejo</b>       | <sup>19</sup> Contractor<br><b>Pense Drilling</b> | <sup>20</sup> Spud Date<br><b>January 1, 2004</b>         |

**<sup>21</sup> Proposed Casing and Cement Program**

| Hole Size     | Casing Size   | Casing weight/foot | Setting Depth | Sacks of Cement | Estimated TOC  |
|---------------|---------------|--------------------|---------------|-----------------|----------------|
| <b>11"</b>    | <b>8 5/8"</b> | <b>23#</b>         | <b>330'</b>   | <b>100 sx.</b>  | <b>SURFACE</b> |
| <b>7 7/8"</b> | <b>5 1/2"</b> | <b>15.50#</b>      | <b>1,900'</b> | <b>190 sx.</b>  | <b>SURFACE</b> |
|               |               |                    |               |                 |                |
|               |               |                    |               |                 |                |
|               |               |                    |               |                 |                |

**22** Describe the proposed program. If this application is to DEEPEN or PLUG BACK, give the data on the present productive zone and proposed new productive zone. Describe the blowout prevention program, if any. Use additional sheets if necessary.

- Drill 11" hole to +/- 330' with air.
- Set 8 5/8" surface casing and cement to surface with 100 sks of cement.
- Drill 7 7/8" hole 1,900' with air. Run open hole logs.
- Set 5 1/2" production casing to TD and cement to surface. Cement volumes calculated from open hole logs.
- Perforate and stimulate Vermejo and/or Raton Coals. Clean out wellbore and run production equipment.

**23** I hereby certify that the information given above is true and complete to the best of my knowledge and belief.

Signature:

*DR Lankford*

Printed name: Donald R. Lankford

Title: Principal Engineer

Date: 12-16-03

Phone: (505) 445-6721

OIL CONSERVATION DIVISION

Approved by:

*[Signature]*

Title:

**DISTRICT SUPERVISOR**

Approval Date: 12/22/03

Expiration Date: 12/22/04

Conditions of Approval:

Attached ☐

**District I**

1625 N. French Dr., Hobbs, NM 88240

**District II**

1301 W. Grand Avenue, Artesia, NM 88210

**District III**

1000 Rio Brazos Rd., Aztec, NM 87410

**District IV**

1220 S. St. Francis Dr., Santa Fe, NM 87505

State of New Mexico  
Energy, Minerals & Natural Resources Department  
**OIL CONSERVATION DIVISION**  
1220 South St. Francis Dr.  
Santa Fe, NM 87505

Form C-102

Revised August 15, 2000

Submit to Appropriate District Office

State Lease - 4 Copies

Fee Lease - 3 Copies

☐ AMENDED REPORT

**WELL LOCATION AND ACREAGE DEDICATION PLAT**

|                                     |  |  |
|-------------------------------------|--|--|
| <sup>1</sup> API Number             | <sup>2</sup> Pool Code<br>97046                            | <sup>3</sup> Pool Name<br>CASTLE ROCK PARK - VERMEJO GAS |
| <sup>4</sup> Property Code<br>25179 | <sup>5</sup> Property Name<br>VERMEJO PARK RANCH           | <sup>6</sup> Well Number<br>VPR'D-122                    |
| <sup>7</sup> OGRID No.<br>180514    | <sup>8</sup> Operator Name<br>EL PASO ENERGY RATON, L.L.C. | <sup>9</sup> Elevation<br>7940' ±                        |

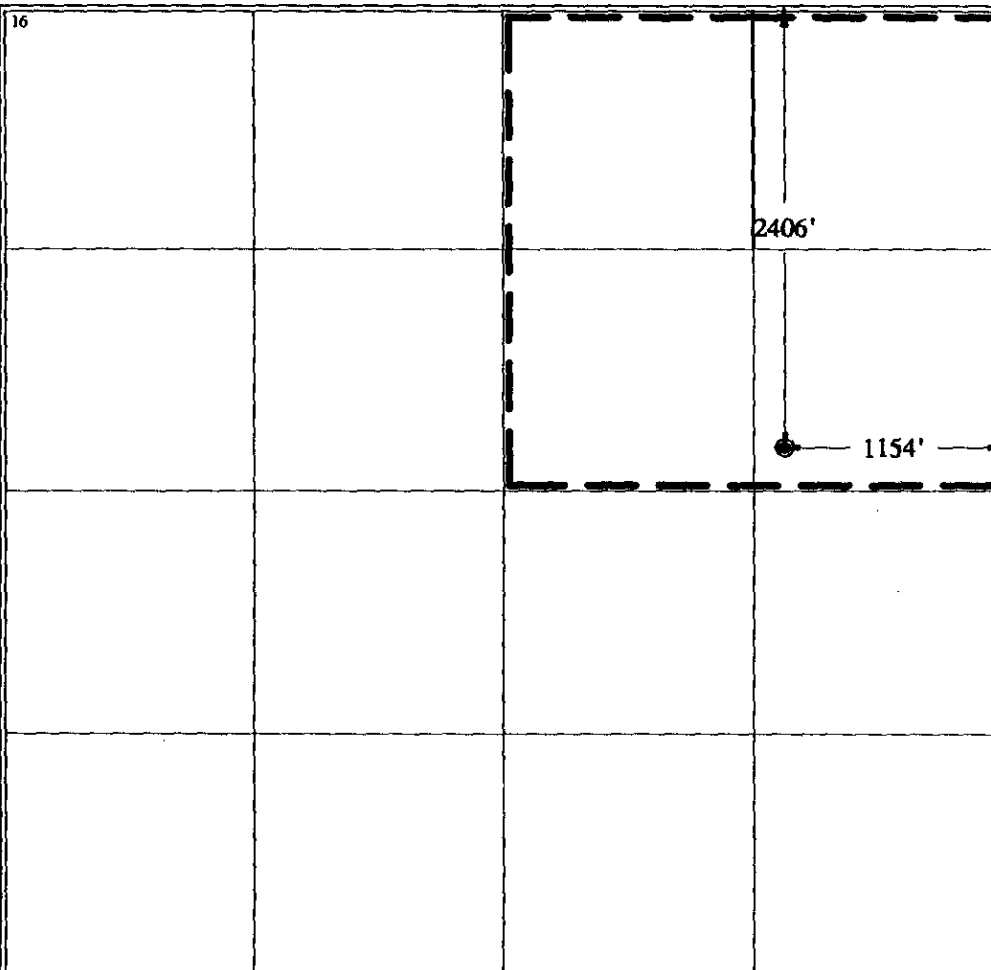
**<sup>10</sup> Surface Location**

|                    |               |                  |               |              |                       |                           |                       |                        |                  |
|--------------------|---------------|------------------|---------------|--------------|-----------------------|---------------------------|-----------------------|------------------------|------------------|
| UL or lot no.<br>H | Section<br>11 | Township<br>30 N | Range<br>18 E | Lot Idn<br>H | Feet from the<br>2406 | North/South line<br>NORTH | Feet from the<br>1154 | East/West line<br>EAST | County<br>COLFAX |
|--------------------|---------------|------------------|---------------|--------------|-----------------------|---------------------------|-----------------------|------------------------|------------------|

**<sup>11</sup> Bottom Hole Location If Different From Surface**

|                               |                               |                                  |                         |         |               |                  |               |                |        |
|-------------------------------|-------------------------------|----------------------------------|-------------------------|---------|---------------|------------------|---------------|----------------|--------|
| UL or lot no.                 | Section                       | Township                         | Range                   | Lot Idn | Feet from the | North/South line | Feet from the | East/West line | County |
| <sup>12</sup> Dedicated Acres | <sup>13</sup> Joint or Infill | <sup>14</sup> Consolidation Code | <sup>15</sup> Order No. |         |               |                  |               |                |        |

NO ALLOWABLE WILL BE ASSIGNED TO THIS COMPLETION UNTIL ALL INTERESTS HAVE BEEN CONSOLIDATED OR A NON-STANDARD UNIT HAS BEEN APPROVED BY THE DIVISION



**<sup>17</sup> OPERATOR CERTIFICATION**

I hereby certify that the information contained herein is true and complete to the best of my knowledge and belief.

Signature

*DR Lankford*

Printed Name DONALD R. LANKFORD

Title SENIOR PETROLIUM ENGINEER

Date

**<sup>18</sup> SURVEYOR CERTIFICATION**

I hereby certify that the well location shown on this plat was plotted from field notes of actual surveys made by me or under my supervision, and that the same is true and correct to the best of my belief.

December 15, 2003

Date of Survey

Signature and Seal of Professional Surveyor:

*Joe Smith*  
Certificate Number NM L.S. NO. 5103