

**STATE OF NEW MEXICO  
ENERGY, MINERALS AND NATURAL RESOURCES DEPARTMENT  
OIL CONSERVATION DIVISION**

**APPLICATION OF COLGATE OPERATING, LLC  
FOR COMPULSORY POOLING IN  
EDDY COUNTY, NEW MEXICO**

**CASE NO. 22085**

**APPLICATION OF COLGATE OPERATING, LLC  
FOR COMPULSORY POOLING IN  
EDDY COUNTY, NEW MEXICO**

**CASE NO. 22086**

**COMPLIANCE NOTICE**

Colgate Operating, LLC, by and through Padilla Law Firm, P.A., Ernest L. Padilla, hereby complies with the Scheduling Order dated August 10, 2021 issued by the Oil Conservation Division Hearing Examiner. Attached being submitted are the supplemental exhibits for the above referenced cases.

Respectfully submitted,

PADILLA LAW FIRM, P.A.

**/s/ Ernest L. Padilla**

Ernest L. Padilla  
Attorney for Colgate Operating, LLC  
PO Box 2523  
Santa Fe, New Mexico 87504  
505-988-7577  
[padillalawnm@outlook.com](mailto:padillalawnm@outlook.com)

**CERTIFICATE OF SERVICE**

I hereby certify that the foregoing pleading with attachments was electronically email on this 25<sup>th</sup> day of August, 2021 to the following:

Ocean Munds-Dry  
Elizabeth Ryan

[Ocean.Munds-Dry@conocophillips.com](mailto:Ocean.Munds-Dry@conocophillips.com)  
[Beth.Ryan@conocophillips.com](mailto:Beth.Ryan@conocophillips.com)

**/s/ Ernest L. Padilla**

**OCD CASES# 22085-22086  
COLGATE OPERATING, LLC**

**Oil Conservation Division Examiner hearing  
August 5, 2021**

**Supplemental Exhibits to Exhibit A  
Affidavit of Mark Hadjik**

OCD Case 22085  
(Klondike wells)

- |    |  | <b>Bate Numbers</b> |
|----|--|---------------------|
| 1) | Supplemental Exhibit A C-102's 1 through 4 | 001-004             |

OCD Case 22086  
(Madera wells)

- |    |  |         |
|----|--|---------|
| 2) | Supplemental Exhibit A C-102's 5 through 8 | 005-008 |
|----|--|---------|

**Supplemental Exhibit to Exhibit C  
Affidavit of Ernest L. Padilla**

OCD Cases 22085-22086

- |    |   |         |
|----|---|---------|
| 3) | Supplemental Exhibit C Affidavit of Publication | 034-036 |
|----|---|---------|

**DISTRICT I**  
1626 N. French Dr., Hobbs, N.M. 88240  
Phone: (575) 393-8161 Fax: (575) 393-0720

**DISTRICT II**  
811 S. First St., Artesia, N.M. 88210  
Phone: (575) 748-1289 Fax: (575) 748-8720

**DISTRICT III**  
1000 Rio Brazos Rd., Artec, N.M. 87410  
Phone: (505) 334-8178 Fax: (505) 334-8170

**DISTRICT IV**  
1820 S. St. Francis Dr., Santa Fe, N.M. 87505  
Phone: (505) 478-3460 Fax: (505) 478-3462

State of New Mexico  
Energy, Minerals & Natural Resources Department

Form C-102

Revised August 1, 2011

**OIL CONSERVATION DIVISION**  
1220 South St. Francis Dr.  
Santa Fe, N.M. 87505

Submit one copy to appropriate  
District Office

AMENDED REPORT

**WELL LOCATION AND ACREAGE DEDICATION PLAT**

<sup>1</sup> API Number		<sup>2</sup> Pool Code		<sup>3</sup> Pool Name	
<sup>4</sup> Property Code		<sup>5</sup> Property Name <b>Klondike 9 State Com</b>			<sup>6</sup> Well Number <b>123H</b>
<sup>7</sup> OGRID No.		<sup>8</sup> Operator Name <b>Colgate Operating, LLC</b>			<sup>9</sup> Elevation <b>3541</b>

<sup>10</sup> Surface Location

UL or lot no.	Section	Township	Range	Lot Idn	Feet from the	North/South line	Feet from the	East/West line	County
<b>I</b>	<b>9</b>	<b>19 S</b>	<b>28 E</b>		<b>1387</b>	<b>South</b>	<b>300</b>	<b>East</b>	<b>Eddy</b>

<sup>11</sup> Bottom Hole Location If Different From Surface

UL or lot no.	Section	Township	Range	Lot Idn	Feet from the	North/South line	Feet from the	East/West line	County
<b>L</b>	<b>9</b>	<b>19 S</b>	<b>28 E</b>		<b>2023</b>	<b>South</b>	<b>10</b>	<b>West</b>	<b>Eddy</b>

<sup>12</sup> Dedicated Acres	<sup>13</sup> Joint or Infill	<sup>14</sup> Consolidation Code	<sup>15</sup> Order No.

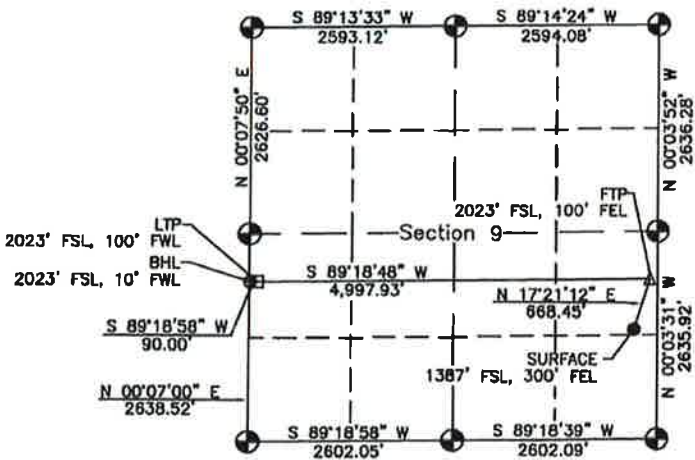
**NO ALLOWABLE WILL BE ASSIGNED TO THIS COMPLETION UNTIL ALL INTERESTS HAVE BEEN CONSOLIDATED OR A NON-STANDARD UNIT HAS BEEN APPROVED BY THE DIVISION**

16

- Legend:**
- = Surface Location
  - = Bottom Hole Location
  - △ = First Take Point (FTP)
  - = Last Take Point (LTP)
  - ⊙ = Found 1941 USGLO Brass Cap

**SURFACE LOCATION**  
NAD 83 NMSPC ZONE 3001  
Y= 608141.22 N  
X= 590504.85 E  
LAT.= 32.6717238° N  
LONG.= 104.1735471° W

**FIRST TAKE POINT**  
NAD 83 NMSPC ZONE 3001  
2023' FSL, 100' FEL  
SEC. 9, T19S, R28E  
Y= 608779.24 N  
X= 590704.22 E  
LAT.= 32.6734767° N  
LONG.= 104.1728960° W



**BOTTOM HOLE LOCATION**  
NAD 83 NMSPC ZONE 3001  
Y= 608718.28 N  
X= 585616.65 E  
LAT.= 32.6733292° N  
LONG.= 104.1894304° W

**LAST TAKE POINT**  
NAD 83 NMSPC ZONE 3001  
2023' FSL, 100' FWL  
SEC. 9, T19S, R28E  
Y= 608719.36 N  
X= 585706.65 E  
LAT.= 32.6733318° N  
LONG.= 104.1891379° W

**17 OPERATOR CERTIFICATION**

I hereby certify that the information contained herein is true and complete to the best of my knowledge and belief, and that this organization either owns a working interest or unleased mineral interest in the land including the proposed bottom hole location or has a right to drill this well at this location pursuant to a contract with an owner of such a mineral or working interest, or to a voluntary pooling agreement or a compulsory pooling order heretofore entered by the division.

Signature \_\_\_\_\_ Date \_\_\_\_\_  
Printed Name \_\_\_\_\_  
E-mail Address \_\_\_\_\_

**18 SURVEYOR CERTIFICATION**

I hereby certify that the well location shown on this plat was plotted from field notes of actual surveys made by me or under my supervision, and that the same is true and correct to the best of my belief.

6/24/20

Date of Survey  
Plat Revised: 06/06/21  
Signature and Seal of



17078  
Certificate Number

**DISTRICT I**  
1825 N. French Dr., Hobbs, N.M. 88240  
Phone: (575) 393-6161 Fax: (575) 393-0720

**DISTRICT II**  
811 S. First St., Artesia, N.M. 88210  
Phone: (575) 748-1283 Fax: (575) 748-9720

**DISTRICT III**  
1000 Rio Brazos Rd., Artec, N.M. 87410  
Phone: (505) 334-6178 Fax: (505) 334-6170

**DISTRICT IV**  
1220 S. St. Francis Dr., Santa Fe, N.M. 87505  
Phone: (505) 478-3460 Fax: (505) 478-3482

State of New Mexico  
Energy, Minerals & Natural Resources Department

OIL CONSERVATION DIVISION  
1220 South St. Francis Dr.  
Santa Fe, N.M. 87505

Form C-102  
Revised August 1, 2011  
Submit one copy to appropriate  
District Office

AMENDED REPORT

WELL LOCATION AND ACREAGE DEDICATION PLAT

<sup>1</sup> API Number		<sup>2</sup> Pool Code		<sup>3</sup> Pool Name	
<sup>4</sup> Property Code		<sup>4</sup> Property Name <b>Klondike 9 State Com</b>			<sup>5</sup> Well Number <b>124H</b>
<sup>7</sup> OGRD No.		<sup>6</sup> Operator Name <b>Colgate Operating, LLC</b>			<sup>8</sup> Elevation <b>3541</b>

<sup>10</sup> Surface Location

UL or lot no.	Section	Township	Range	Lot Idn	Feet from the	North/South line	Feet from the	East/West line	County
<b>P</b>	<b>9</b>	<b>19 S</b>	<b>28 E</b>		<b>1297</b>	<b>South</b>	<b>300</b>	<b>East</b>	<b>Eddy</b>

<sup>11</sup> Bottom Hole Location If Different From Surface

UL or lot no.	Section	Township	Range	Lot Idn	Feet from the	North/South line	Feet from the	East/West line	County
<b>M</b>	<b>9</b>	<b>19 S</b>	<b>28 E</b>		<b>560</b>	<b>South</b>	<b>10</b>	<b>West</b>	<b>Eddy</b>

<sup>12</sup> Dedicated Acres	<sup>13</sup> Joint or Infill	<sup>14</sup> Consolidation Code	<sup>15</sup> Order No.

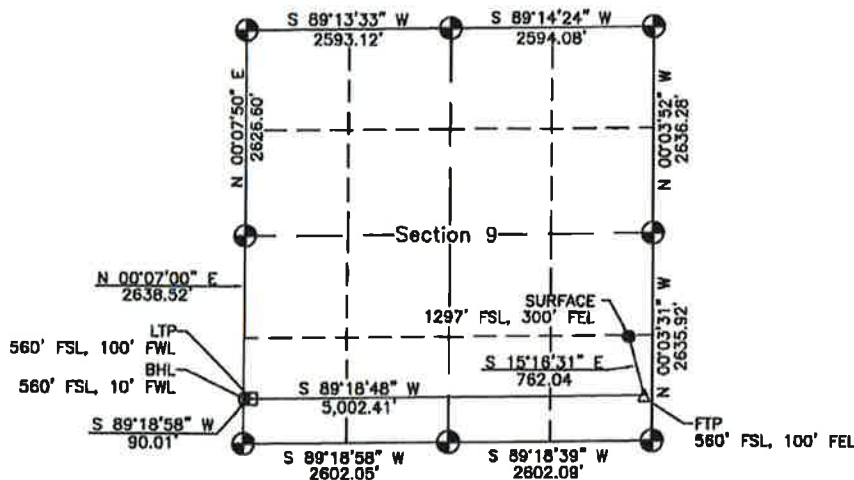
NO ALLOWABLE WILL BE ASSIGNED TO THIS COMPLETION UNTIL ALL INTERESTS HAVE BEEN CONSOLIDATED OR A NON-STANDARD UNIT HAS BEEN APPROVED BY THE DIVISION

16

- Legend:**
- = Surface Location
  - = Bottom Hole Location
  - △ = First Take Point (FTP)
  - = Last Take Point (LTP)
  - ⊙ = Found 1941 USGLO Brass Cap

**SURFACE LOCATION**  
NAD 83 NMSPC ZONE 3001  
Y = 608051.28 N  
X = 590504.96 E  
LAT. = 32.6714766° N  
LONG. = 104.1735472° W

**FIRST TAKE POINT**  
NAD 83 NMSPC ZONE 3001  
560' FSL, 100' FEL  
SEC. 9, T19S, R28E  
Y = 607316.15 N  
X = 590705.72 E  
LAT. = 32.6694551° N  
LONG. = 104.1728983° W



**BOTTOM HOLE LOCATION**  
NAD 83 NMSPC ZONE 3001  
Y = 607255.14 N  
X = 595613.67 E  
LAT. = 32.6693075° N  
LONG. = 104.1894465° W

**LAST TAKE POINT**  
NAD 83 NMSPC ZONE 3001  
560' FSL, 100' FWL  
SEC. 9, T19S, R28E  
Y = 607256.22 N  
X = 585703.67 E  
LAT. = 32.6693101° N  
LONG. = 104.1891540° W

17 OPERATOR CERTIFICATION

I hereby certify that the information contained herein is true and complete to the best of my knowledge and belief, and that this organization either owns a working interest or unleased mineral interest in the land including the proposed bottom hole location or has a right to drill this well at this location pursuant to a contract with an owner of such a mineral or working interest, or to a voluntary pooling agreement or a compulsory pooling order heretofore entered by the division.

Signature \_\_\_\_\_ Date \_\_\_\_\_

Printed Name \_\_\_\_\_

E-mail Address \_\_\_\_\_

18 SURVEYOR CERTIFICATION

I hereby certify that the well location shown on this plat was plotted from field notes of actual surveys made by me or under my supervision, and that the same is true and correct to the best of my belief.

6/24/20

Date of Survey \_\_\_\_\_  
Plat Revised: 06/06/21  
Signature and Seal \_\_\_\_\_



17078  
Certificate Number

**DISTRICT I**  
1625 N. French Dr., Hobbs, N.M. 88240  
Phone: (575) 393-6161 Fax: (575) 393-0720

**DISTRICT II**  
811 S. First St., Artesia, N.M. 88210  
Phone: (575) 748-1283 Fax: (575) 748-9720

**DISTRICT III**  
1000 Rio Brazos Rd., Aztec, N.M. 87410  
Phone: (505) 334-6178 Fax: (505) 334-6170

**DISTRICT IV**  
1220 S. St. Francis Dr., Santa Fe, N.M. 87505  
Phone: (505) 476-3480 Fax: (505) 476-3482

State of New Mexico  
Energy, Minerals & Natural Resources Department

Form C-102

Revised August 1, 2011

**OIL CONSERVATION DIVISION**  
1220 South St. Francis Dr.  
Santa Fe, N.M. 87505

Submit one copy to appropriate  
District Office

AMENDED REPORT

**WELL LOCATION AND ACREAGE DEDICATION PLAT**

<sup>1</sup> API Number		<sup>8</sup> Pool Code		<sup>9</sup> Pool Name	
<sup>4</sup> Property Code		<sup>5</sup> Property Name <b>Klondike 9 State Com</b>			<sup>6</sup> Well Number <b>133H</b>
<sup>7</sup> GRID No.		<sup>3</sup> Operator Name <b>Colgate Operating, LLC</b>			<sup>2</sup> Elevation <b>3541</b>

<sup>10</sup> Surface Location

UL or lot no.	Section	Township	Range	Lot Idn	Feet from the	North/South line	Feet from the	East/West line	County
<b>I</b>	<b>9</b>	<b>19 S</b>	<b>28 E</b>		<b>1342</b>	<b>South</b>	<b>300</b>	<b>East</b>	<b>Eddy</b>

<sup>11</sup> Bottom Hole Location If Different From Surface

UL or lot no.	Section	Township	Range	Lot Idn	Feet from the	North/South line	Feet from the	East/West line	County
<b>L</b>	<b>9</b>	<b>19 S</b>	<b>28 E</b>		<b>1793</b>	<b>South</b>	<b>10</b>	<b>West</b>	<b>Eddy</b>

<sup>12</sup> Dedicated Acres		<sup>13</sup> Joint or Infill	<sup>14</sup> Consolidation Code	<sup>15</sup> Order No.
-------------------------------	--	-------------------------------	----------------------------------	-------------------------

**NO ALLOWABLE WILL BE ASSIGNED TO THIS COMPLETION UNTIL ALL INTERESTS HAVE BEEN CONSOLIDATED OR A NON-STANDARD UNIT HAS BEEN APPROVED BY THE DIVISION**

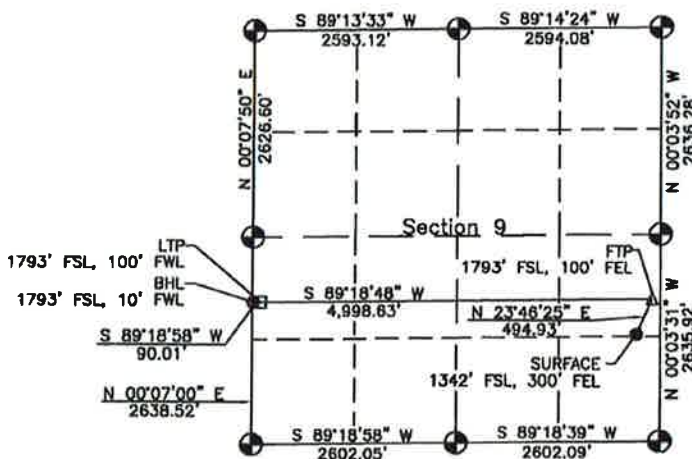
16

**Legend:**

- = Surface Location
- = Bottom Hole Location
- △ = First Take Point (FTP)
- = Last Take Point (LTP)
- ⊙ = Found 1941 USGLO Brass Cap

**SURFACE LOCATION**  
NAD 83 NMSPC ZONE 3001  
Y= 808086.30 N  
X= 590504.94 E  
LAT.= 32.8716003° N  
LONG.= 104.1735470° W

**FIRST TAKE POINT**  
NAD 83 NMSPC ZONE 3001  
1793' FSL, 100' FEL  
SEC. 9, T19S, R28E  
Y= 808549.23 N  
X= 590704.46 E  
LAT.= 32.6728445° N  
LONG.= 104.1728964° W



**BOTTOM HOLE LOCATION**  
NAD 83 NMSPC ZONE 3001  
Y= 808488.28 N  
X= 585616.18 E  
LAT.= 32.6726970° N  
LONG.= 104.1894329° W

**LAST TAKE POINT**  
NAD 83 NMSPC ZONE 3001  
1793' FSL, 100' FWL  
SEC. 9, T19S, R28E  
Y= 808489.33 N  
X= 585706.18 E  
LAT.= 32.6728996° N  
LONG.= 104.1891404° W

**17 OPERATOR CERTIFICATION**

I hereby certify that the information contained herein is true and complete to the best of my knowledge and belief, and that this organization either owns a working interest or unleased mineral interest in the land including the proposed bottom hole location or has a right to drill this well at this location pursuant to a contract with an owner of such a mineral or working interest, or to a voluntary pooling agreement or a compulsory pooling order heretofore entered by the division.

Signature \_\_\_\_\_ Date \_\_\_\_\_

Printed Name \_\_\_\_\_

E-mail Address \_\_\_\_\_

**18 SURVEYOR CERTIFICATION**

I hereby certify that the well location shown on this plat was plotted from field notes of actual surveys made by me or under my supervision, and that the same is true and correct to the best of my belief.

8/24/20

Date of Survey  
Plat Revised: 08/06/21



17078  
Certificate Number

**DISTRICT I**  
1625 N. French Dr., Hobbs, N.M. 88240  
Phone: (575) 393-6181 Fax: (575) 393-0720

**DISTRICT II**  
811 S. First St., Artesia, N.M. 88210  
Phone: (575) 748-1283 Fax: (575) 748-0720

**DISTRICT III**  
1000 Rio Brazos Rd., Artesia, N.M. 87410  
Phone: (505) 334-8178 Fax: (505) 334-8170

**DISTRICT IV**  
1220 S. St. Francis Dr., Santa Fe, N.M. 87505  
Phone: (505) 478-3480 Fax: (505) 478-3482

State of New Mexico  
Energy, Minerals & Natural Resources Department

Form C-102

Revised August 1, 2011

**OIL CONSERVATION DIVISION**

Submit one copy to appropriate  
District Office

1220 South St. Francis Dr.  
Santa Fe, N.M. 87505

AMENDED REPORT

**WELL LOCATION AND ACREAGE DEDICATION PLAT**

<sup>1</sup> API Number		<sup>2</sup> Pool Code		<sup>3</sup> Pool Name	
<sup>4</sup> Property Code		<sup>5</sup> Property Name <b>Klondike 9 State Com</b>			<sup>6</sup> Well Number <b>134H</b>
<sup>7</sup> OGRID No.		<sup>8</sup> Operator Name <b>Colgate Operating, LLC</b>			<sup>9</sup> Elevation <b>3541</b>

<sup>10</sup> Surface Location

UL or lot no.	Section	Township	Range	Lot Idn	Feet from the	North/South line	Feet from the	East/West line	County
<b>P</b>	<b>9</b>	<b>19 S</b>	<b>28 E</b>		<b>1253</b>	<b>South</b>	<b>300</b>	<b>East</b>	<b>Eddy</b>

<sup>11</sup> Bottom Hole Location If Different From Surface

UL or lot no.	Section	Township	Range	Lot Idn	Feet from the	North/South line	Feet from the	East/West line	County
<b>M</b>	<b>9</b>	<b>19 S</b>	<b>28 E</b>		<b>330</b>	<b>South</b>	<b>10</b>	<b>West</b>	<b>Eddy</b>

<sup>12</sup> Dedicated Acres	<sup>13</sup> Joint or Infill	<sup>14</sup> Consolidation Code	<sup>15</sup> Order No.

**NO ALLOWABLE WILL BE ASSIGNED TO THIS COMPLETION UNTIL ALL INTERESTS HAVE BEEN CONSOLIDATED OR A NON-STANDARD UNIT HAS BEEN APPROVED BY THE DIVISION**

**Legend:**

- = Surface Location
- = Bottom Hole Location
- △ = First Take Point (FTP)
- = Last Take Point (LTP)
- ⊙ = Found 1941 USGLO Brass Cap

**SURFACE LOCATION**  
NAD 83 NMSPC ZONE 3001  
Y= 608006.40 N  
X= 590504.89 E  
LAT.= 32.8713532° N  
LONG.= 104.1735476° W

**FIRST TAKE POINT**  
NAD 83 NMSPC ZONE 3001  
330' FSL, 100' FEL  
SEC. 9, T19S, R28E  
Y= 607086.14 N  
X= 590705.96 E  
LAT.= 32.8688229° N  
LONG.= 104.1728957° W

**BOTTOM HOLE LOCATION**  
NAD 83 NMSPC ZONE 3001  
Y= 607025.12 N  
X= 585613.20 E  
LAT.= 32.8686752° N  
LONG.= 104.1894490° W

**LAST TAKE POINT**  
NAD 83 NMSPC ZONE 3001  
330' FSL, 100' FWL  
SEC. 9, T19S, R28E  
Y= 607026.19 N  
X= 585703.20 E  
LAT.= 32.8688778° N  
LONG.= 104.1891566° W

**17 OPERATOR CERTIFICATION**

I hereby certify that the information contained herein is true and complete to the best of my knowledge and belief, and that this organization either owns a working interest or unleased mineral interest in the land including the proposed bottom hole location or has a right to drill this well at this location pursuant to a contract with an owner of such a mineral or working interest, or to a voluntary pooling agreement or a compulsory pooling order heretofore entered by the division.

Signature \_\_\_\_\_ Date \_\_\_\_\_

Printed Name \_\_\_\_\_

E-mail Address \_\_\_\_\_

**18 SURVEYOR CERTIFICATION**

I hereby certify that the well location shown on this plat was plotted from field notes of actual surveys made by me or under my supervision, and that the same is true and correct to the best of my belief.

**6/24/20**

Date of Survey \_\_\_\_\_  
Plat Revised: 06/06/21  
Signature and Seal of **MARSHALL W. LINDEN**

**17078**  
Certificate Number

**DISTRICT I**  
1625 N. French Dr., Hobbs, N.M. 88240  
Phone: (575) 393-6161 Fax: (575) 393-0720

**DISTRICT II**  
811 S. First St., Artesia, N.M. 88210  
Phone: (575) 748-1283 Fax: (575) 748-9720

**DISTRICT III**  
1000 Rio Brazos Rd., Artesia, N.M. 87410  
Phone: (505) 334-6178 Fax: (505) 334-6170

**DISTRICT IV**  
1220 S. St. Francis Dr., Santa Fe, N.M. 87505  
Phone: (505) 478-3460 Fax: (505) 478-3462

State of New Mexico  
Energy, Minerals & Natural Resources Department

Form C-102

Revised August 1, 2011

**OIL CONSERVATION DIVISION**

Submit one copy to appropriate  
District Office

1220 South St. Francis Dr.  
Santa Fe, N.M. 87505

AMENDED REPORT

**WELL LOCATION AND ACREAGE DEDICATION PLAT**

<sup>1</sup> API Number		<sup>2</sup> Pool Code		<sup>3</sup> Pool Name	
<sup>4</sup> Property Code		<sup>5</sup> Property Name <b>Madera 9 State Com</b>			<sup>6</sup> Well Number <b>121H</b>
<sup>7</sup> GRID No.		<sup>8</sup> Operator Name <b>Colgate Operating, LLC</b>			<sup>9</sup> Elevation <b>3538</b>

<sup>10</sup> Surface Location

UL or lot no.	Section	Township	Range	Lot Idn	Feet from the	North/South line	Feet from the	East/West line	County
<b>H</b>	<b>9</b>	<b>19 S</b>	<b>28 E</b>		<b>1579</b>	<b>North</b>	<b>180</b>	<b>East</b>	<b>Eddy</b>

<sup>11</sup> Bottom Hole Location If Different From Surface

UL or lot no.	Section	Township	Range	Lot Idn	Feet from the	North/South line	Feet from the	East/West line	County
<b>D</b>	<b>9</b>	<b>19 S</b>	<b>28 E</b>		<b>330</b>	<b>North</b>	<b>10</b>	<b>West</b>	<b>Eddy</b>

<sup>12</sup> Dedicated Acres	<sup>13</sup> Joint or Infill	<sup>14</sup> Consolidation Code	<sup>15</sup> Order No.
-------------------------------	-------------------------------	----------------------------------	-------------------------

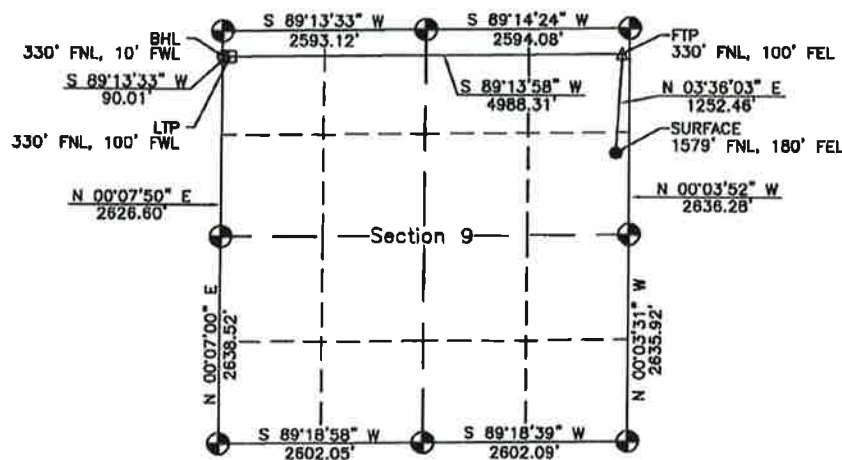
**NO ALLOWABLE WILL BE ASSIGNED TO THIS COMPLETION UNTIL ALL INTERESTS HAVE BEEN CONSOLIDATED OR A NON-STANDARD UNIT HAS BEEN APPROVED BY THE DIVISION**

16

- Legend:**
- = Surface Location
  - = Bottom Hole Location
  - △ = First Take Point (FTP)
  - = Last Take Point (LTP)
  - ⊙ = Found 1941 USGLO Brass Cap

**SURFACE LOCATION**  
NAD 83 NMSPC ZONE 3001  
Y= 610448.18 N  
X= 590822.34 E  
LAT.= 32.6780645° N  
LONG.= 104.1731539° W

**FIRST TAKE POINT**  
NAD 83 NMSPC ZONE 3001  
330' FNL, 100' FEL  
SEC. 9, T19S, R28E  
Y= 611898.17 N  
X= 590701.00 E  
LAT.= 32.6815000° N  
LONG.= 104.1728921° W



**BOTTOM HOLE LOCATION**  
NAD 83 NMSPC ZONE 3001  
Y= 611830.17 N  
X= 585823.14 E  
LAT.= 32.6813331° N  
LONG.= 104.1893985° W

**LAST TAKE POINT**  
NAD 83 NMSPC ZONE 3001  
330' FNL, 100' FWL  
SEC. 9, T19S, R28E  
Y= 611831.38 N  
X= 585713.14 E  
LAT.= 32.6813361° N  
LONG.= 104.1891039° W

**17 OPERATOR CERTIFICATION**

I hereby certify that the information contained herein is true and complete to the best of my knowledge and belief, and that this organization either owns a working interest or unleased mineral interest in the land including the proposed bottom hole location or has a right to drill this well at this location pursuant to a contract with an owner of such a mineral or working interest, or to a voluntary pooling agreement or a compulsory pooling order heretofore entered by the division.

Signature \_\_\_\_\_ Date \_\_\_\_\_  
 Printed Name \_\_\_\_\_  
 E-mail Address \_\_\_\_\_

**18 SURVEYOR CERTIFICATION**

I hereby certify that the well location shown on this plat was plotted from field notes of actual surveys made by me or under my supervision, and that the same is true and correct to the best of my belief.

6/24/20

Date of Survey  
 Plat Revised: 08/19/21  
 Signature and Seal of Professional Surveyor:



17078  
 Certificate Number

**DISTRICT I**  
1625 N. French Dr., Hobbs, N.M. 88240  
Phone: (575) 393-6161 Fax: (575) 393-0720

**DISTRICT II**  
811 S. First St., Artesia, N.M. 88210  
Phone: (575) 748-1283 Fax: (575) 748-9720

**DISTRICT III**  
1000 Rio Brazos Rd., Aztec, N.M. 87410  
Phone: (505) 334-8176 Fax: (505) 334-8170

**DISTRICT IV**  
1220 S. St. Francis Dr., Santa Fe, N.M. 87505  
Phone: (505) 476-3480 Fax: (505) 476-3482

State of New Mexico  
Energy, Minerals & Natural Resources Department

Form C-102

Revised August 1, 2011

OIL CONSERVATION DIVISION  
1220 South St. Francis Dr.  
Santa Fe, N.M. 87505

Submit one copy to appropriate  
District Office

AMENDED REPORT

WELL LOCATION AND ACREAGE DEDICATION PLAT

*API Number		*Pool Code		*Pool Name	
*Property Code		*Property Name <b>Madera 9 State Com</b>			*Well Number <b>122H</b>
*UGRID No.		*Operator Name <b>Colgate Operating, LLC</b>			*Elevation <b>3540</b>

<sup>10</sup> Surface Location

UL or lot no.	Section	Township	Range	Lot Idn	Feet from the	North/South line	Feet from the	East/West line	County
<b>H</b>	<b>9</b>	<b>19 S</b>	<b>28 E</b>		<b>1669</b>	<b>North</b>	<b>180</b>	<b>East</b>	<b>Eddy</b>

<sup>11</sup> Bottom Hole Location If Different From Surface

UL or lot no.	Section	Township	Range	Lot Idn	Feet from the	North/South line	Feet from the	East/West line	County
<b>E</b>	<b>9</b>	<b>19 S</b>	<b>28 E</b>		<b>1793</b>	<b>North</b>	<b>10</b>	<b>West</b>	<b>Eddy</b>

*Dedicated Acres		**Joint or Infill		**Consolidation Code		**Order No.	
------------------	--	-------------------	--	----------------------	--	-------------	--

NO ALLOWABLE WILL BE ASSIGNED TO THIS COMPLETION UNTIL ALL INTERESTS HAVE BEEN CONSOLIDATED OR A NON-STANDARD UNIT HAS BEEN APPROVED BY THE DIVISION

**Legend:**

- = Surface Location
- = Bottom Hole Location
- △ = First Take Point (FTP)
- = Last Take Point (LTP)
- ⊙ = Found 1941 USGLO Brass Cap

**SURFACE LOCATION**  
NAD 83 NMSPC ZONE 3001  
Y= 810358.23 N  
X= 590622.34 E  
LAT.= 32.6778172° N  
LONG.= 104.1731544° W

**FIRST TAKE POINT**  
NAD 83 NMSPC ZONE 3001  
1793' FNL, 100' FEL  
SEC. 9, T19S, R28E  
Y= 610235.06 N  
X= 590702.65 E  
LAT.= 32.6774783° N  
LONG.= 104.1728940° W

**BOTTOM HOLE LOCATION**  
NAD 83 NMSPC ZONE 3001  
Y= 610166.99 N  
X= 585619.80 E  
LAT.= 32.6773113° N  
LONG.= 104.1894137° W

**LAST TAKE POINT**  
NAD 83 NMSPC ZONE 3001  
1793' FNL, 100' FWL  
SEC. 9, T19S, R28E  
Y= 610168.20 N  
X= 585709.81 E  
LAT.= 32.6773143° N  
LONG.= 104.1891212° W

**<sup>17</sup> OPERATOR CERTIFICATION**

*I hereby certify that the information contained herein is true and complete to the best of my knowledge and belief, and that this organization either owns a working interest or unleased mineral interest in the land including the proposed bottom hole location or has a right to drill this well at this location pursuant to a contract with an owner of such a mineral or working interest, or to a voluntary pooling agreement or a compulsory pooling order heretofore entered by the division.*

Signature \_\_\_\_\_ Date \_\_\_\_\_

Printed Name \_\_\_\_\_

E-mail Address \_\_\_\_\_

---

**<sup>18</sup> SURVEYOR CERTIFICATION**

*I hereby certify that the well location shown on this plat was plotted from field notes of actual surveys made by me or under my supervision, and that the same is true and correct to the best of my belief.*

**6/24/20**

Date of Survey  
Plat Revised: 06/18/20  
Signature and Seal of Professional Surveyor

**17078**

Certificate Number



**DISTRICT I**  
 1626 N. French Dr., Hobbs, N.M. 88340  
 Phone: (575) 393-6161 Fax: (575) 393-0720

**DISTRICT II**  
 811 S. First St., Artesia, N.M. 86210  
 Phone: (575) 748-1288 Fax: (575) 748-9720

**DISTRICT III**  
 1000 Rio Brazos Rd., Acker, N.M. 87410  
 Phone: (505) 334-6178 Fax: (505) 334-6170

**DISTRICT IV**  
 1220 S. St. Francis Dr., Santa Fe, N.M. 87505  
 Phone: (505) 478-3480 Fax: (505) 478-3462

State of New Mexico  
 Energy, Minerals & Natural Resources Department

Form C-102

Revised August 1, 2011

**OIL CONSERVATION DIVISION**  
 1220 South St. Francis Dr.  
 Santa Fe, N.M. 87505

Submit one copy to appropriate  
 District Office

AMENDED REPORT

**WELL LOCATION AND ACREAGE DEDICATION PLAT**

<sup>1</sup> API Number		<sup>2</sup> Pool Code		<sup>3</sup> Pool Name	
<sup>4</sup> Property Code		<sup>5</sup> Property Name <b>Madera 9 State Com</b>			<sup>6</sup> Well Number <b>131H</b>
<sup>7</sup> GRID No.		<sup>8</sup> Operator Name <b>Colgate Operating, LLC</b>			<sup>9</sup> Elevation <b>3539</b>

<sup>10</sup> Surface Location

UL or lot no.	Section	Township	Range	Lot Idn	Feet from the	North/South line	Feet from the	East/West line	County
<b>H</b>	<b>9</b>	<b>19 S</b>	<b>28 E</b>		<b>1624</b>	<b>North</b>	<b>180</b>	<b>East</b>	<b>Eddy</b>

<sup>11</sup> Bottom Hole Location If Different From Surface

UL or lot no.	Section	Township	Range	Lot Idn	Feet from the	North/South line	Feet from the	East/West line	County
<b>D</b>	<b>9</b>	<b>19 S</b>	<b>28 E</b>		<b>560</b>	<b>North</b>	<b>10</b>	<b>West</b>	<b>Eddy</b>

<sup>12</sup> Dedicated Acres	<sup>13</sup> Joint or Infill	<sup>14</sup> Consolidation Code	<sup>15</sup> Order No.
-------------------------------	-------------------------------	----------------------------------	-------------------------

**NO ALLOWABLE WILL BE ASSIGNED TO THIS COMPLETION UNTIL ALL INTERESTS HAVE BEEN CONSOLIDATED OR A NON-STANDARD UNIT HAS BEEN APPROVED BY THE DIVISION**

**Legend:**

- = Surface Location
- = Bottom Hole Location
- △ = First Take Point (FTP)
- = Last Take Point (LTP)
- ⊙ = Found 1941 USGLO Brass Cap

**SURFACE LOCATION**  
 NAD 83 NAD 83 NMSPC ZONE 3001  
 Y= 810403.20 N  
 X= 590622.38 E  
 LAT.= 32.8779408° N  
 LONG.= 104.1731541° W

**FIRST TAKE POINT**  
 NAD 83 NMSPC ZONE 3001  
 560' FNL, 100' FEL  
 SEC. 9, T19S, R28E  
 Y= 811488.15 N  
 X= 590701.28 E  
 LAT.= 32.8808677° N  
 LONG.= 104.1728924° W

**BOTTOM HOLE LOCATION**  
 NAD 83 NMSPC ZONE 3001  
 Y= 811400.14 N  
 X= 585822.61 E  
 LAT.= 32.8807008° N  
 LONG.= 104.1893992° W

**LAST TAKE POINT**  
 NAD 83 NMSPC ZONE 3001  
 560' FNL, 100' FWL  
 SEC. 9, T19S, R28E  
 Y= 811401.35 N  
 X= 585712.62 E  
 LAT.= 32.8807038° N  
 LONG.= 104.1891066° W

**17 OPERATOR CERTIFICATION**

I hereby certify that the information contained herein is true and complete to the best of my knowledge and belief, and that this organization either owns a working interest or unleased mineral interest in the land including the proposed bottom hole location or has a right to drill this well at this location pursuant to a contract with an owner of such a mineral or working interest, or to a voluntary pooling agreement or a compulsory pooling order heretofore entered by the division.

Signature \_\_\_\_\_ Date \_\_\_\_\_

Printed Name \_\_\_\_\_

E-mail Address \_\_\_\_\_

**18 SURVEYOR CERTIFICATION**

I hereby certify that the well location shown on this plat was plotted from field notes of actual surveys made by me or under my supervision, and that the same is true and correct to the best of my belief.

**6/24/20**

Date of Survey  
 Plat Revised: 06/19/20  
 Signature and Seal of Professional Surveyor:

**17078**  
 Certificate Number

**DISTRICT I**  
1625 N. French Dr., Hobbs, N.M. 88240  
Phone: (575) 393-8161 Fax: (575) 393-0720

**DISTRICT II**  
811 S. First St., Artesia, N.M. 88210  
Phone: (575) 748-1283 Fax: (575) 748-9720

**DISTRICT III**  
1000 Rio Branos Rd., Artec, N.M. 87410  
Phone: (505) 334-8178 Fax: (505) 334-8170

**DISTRICT IV**  
1220 S. St. Francis Dr., Santa Fe, N.M. 87505  
Phone: (505) 478-3460 Fax: (505) 478-3482

State of New Mexico  
Energy, Minerals & Natural Resources Department

Form C-102

Revised August 1, 2011

**OIL CONSERVATION DIVISION**

1220 South St. Francis Dr.  
Santa Fe, N.M. 87505

Submit one copy to appropriate  
District Office

AMENDED REPORT

**WELL LOCATION AND ACREAGE DEDICATION PLAT**

<sup>1</sup> API Number		<sup>2</sup> Pool Code		<sup>3</sup> Pool Name	
<sup>4</sup> Property Code		<sup>5</sup> Property Name <b>Madera 9 State Com</b>			<sup>6</sup> Well Number <b>132H</b>
<sup>7</sup> OGRID No.		<sup>8</sup> Operator Name <b>Colgate Operating, LLC</b>			<sup>9</sup> Elevation <b>3542</b>

<sup>10</sup> Surface Location

UL or lot no.	Section	Township	Range	Lot Idn	Feet from the	North/South line	Feet from the	East/West line	County
<b>H</b>	<b>9</b>	<b>19 S</b>	<b>28 E</b>		<b>1714</b>	<b>North</b>	<b>180</b>	<b>East</b>	<b>Eddy</b>

<sup>11</sup> Bottom Hole Location If Different From Surface

UL or lot no.	Section	Township	Range	Lot Idn	Feet from the	North/South line	Feet from the	East/West line	County
<b>E</b>	<b>9</b>	<b>19 S</b>	<b>28 E</b>		<b>2023</b>	<b>North</b>	<b>10</b>	<b>West</b>	<b>Eddy</b>

<sup>12</sup> Dedicated Acres	<sup>13</sup> Joint or Infill	<sup>14</sup> Consolidation Code	<sup>15</sup> Order No.
-------------------------------	-------------------------------	----------------------------------	-------------------------

**NO ALLOWABLE WILL BE ASSIGNED TO THIS COMPLETION UNTIL ALL INTERESTS HAVE BEEN CONSOLIDATED OR A NON-STANDARD UNIT HAS BEEN APPROVED BY THE DIVISION**

**16**

**Legend:**

- - Surface Location
- - Bottom Hole Location
- △ - First Take Point (FTP)
- - Last Take Point (LTP)
- ⊙ - Found 1941 USGLO Brass Cap

**SURFACE LOCATION**  
NAD 83 NMSPC ZONE 3001  
Y= 610313.24 N  
X= 590622.36 E  
LAT.= 32.6776936° N  
LONG.= 104.1731545° W

**FIRST TAKE POINT**  
NAD 83 NMSPC ZONE 3001  
2023' FNL, 100' FEL  
SEC. 9, T19S, R28E  
Y= 610005.04 N  
X= 590702.90 E  
LAT.= 32.6768461° N  
LONG.= 104.1728943° W

**BOTTOM HOLE LOCATION**  
NAD 83 NMSPC ZONE 3001  
Y= 609936.96 N  
X= 585619.28 E  
LAT.= 32.6766790° N  
LONG.= 104.1894165° W

**LAST TAKE POINT**  
NAD 83 NMSPC ZONE 3001  
2023' FNL, 100' FWL  
SEC. 9, T19S, R28E  
Y= 609938.18 N  
X= 585709.28 E  
LAT.= 32.6766820° N  
LONG.= 104.1891239° W

**17 OPERATOR CERTIFICATION**

I hereby certify that the information contained herein is true and complete to the best of my knowledge and belief, and that this organization either owns a working interest or unleased mineral interest in the land including the proposed bottom hole location or has a right to drill this well at this location pursuant to a contract with an owner of such a mineral or working interest, or to a voluntary pooling agreement or a compulsory pooling order heretofore entered by the division.

Signature \_\_\_\_\_ Date \_\_\_\_\_

Printed Name \_\_\_\_\_

E-mail Address \_\_\_\_\_

**18 SURVEYOR CERTIFICATION**

I hereby certify that the well location shown on this plat was plotted from field notes of actual surveys made by me or under my supervision, and that the same is true and correct to the best of my belief.

8/24/20

Date of Survey  
Plat Revised: 08/13/21  
Signature and Seal of Professional Surveyor:

17078  
Certificate Number

# Carlsbad Current Argus.

PART OF THE USA TODAY NETWORK

## Affidavit of Publication

Ad # 0004865813

This is not an invoice

PADILLA LAW FIRM  
POBOX 2523


SANTA FE, NM 87504

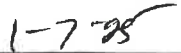
I, a legal clerk of the **Carlsbad Current Argus**, a newspaper published daily at the City of Carlsbad, in said county of Eddy, state of New Mexico and of general paid circulation in said county; that the same is a duly qualified newspaper under the laws of the State wherein legal notices and advertisements may be published; that the printed notice attached hereto was published in the regular and entire edition of said newspaper and not in supplement thereof on the date as follows, to wit:

08/14/2021

  
Legal Clerk

Subscribed and sworn before me this August 14, 2021:

  
State of WI, County of Brown  
NOTARY PUBLIC

  
My commission expires

KATHLEEN ALLEN  
Notary Public  
State of Wisconsin

Ad # 0004865813  
PO #: OCD Cases 22085 & 22086 Colgate  
Operafix, LLC Legal Notice fil

STATE OF NEW MEXICO  
ENERGY, MINERALS AND  
NATURAL RESOURCES  
DEPARTMENT  
OIL CONSERVATION DIVISION  
SANTA FE, NEW MEXICO

The State of New Mexico through its Oil Conservation Division hereby gives notice pursuant to law and the Rules and Regulations of the Division. During the COVID-19 Public Health Emergency, state buildings are closed to the public and hearings will be conducted remotely. A hearing conference was conducted on August 5, 2021 at 8:15 a.m. at which time the Division took the cases under advisement.

STATE OF NEW MEXICO:

All named parties and persons having any right, title, interest or claim in the following case and notice to the public.

(NOTE: All land descriptions herein refer to the New Mexico Principal Meridian whether or not so stated.)

To: Elizabeth Eaton, New Mexico Western Minerals, Inc., Colkeian Corporation, Bean Family Limited Company, Marathon Oil Company, Solis Energy, LLC, Anne S. Johnson, Hanaco LLC, MYJA Trust, James E. Geitgey, Trustee, Jared Partners, Ltd., Dan M. Leonard, Trustee of DML Trust, Constance Ann White *fk/a* Constance White Lloyd, Elizabeth White Kanaly *fk/a* Elizabeth White Nelson, Cheryl White Derrick, William J. Derrick, Trustee for Gretchen S. White, Linda E. Schwarz, J. Phelps White III, Kelth Williams, Solis Resources, Ltd., Yates Brothers, a Partnership, WPX Energy Permian, LLC, James R. Gebel, Trustee for James R. Gebel Trust.

**Case No. 22085:** Applicant seeks an order pooling all mineral interests within the West Winchester Bone Spring (Pool Code 97569), underlying the S/2 of Section 9, Township 19 South, Range 28 East, NMPM, Eddy County, New Mexico. This standard spacing unit will be dedicated to the Klondike 9 State Com 123H, Klondike 9 State Com 124H, Klondike 9 State Com 133H, Klondike 9 State Com 134H, these wells, will be horizontally drilled. The producing intervals for these wells will be orthodox. Also to be considered will be the cost of drilling, completing and equipping said wells, the allocation of these costs as well as the actual operating costs and charges for supervision, designation of Colgate as operator of the wells, and a 200% charge for risk involved in drilling said wells. Said area is located approximately 16.2 miles southeast of Artesia, New Mexico.

**Case No. 22086:** Applicant seek an order pooling all mineral interests within the West Winchester Bone Spring (Pool Code 97569), underlying the N/2 of Section 9, Township 19 South, Range 28 East, NMPM, Eddy County, New Mexico. This standard spacing unit will be dedicated to the Madera 9 State Com 121H, Madera 9 State Com 122H, Madera 9 State Com 122H, Madera 9 State Com 132H, these wells, will be horizontally drilled. The producing intervals for these wells will be orthodox. Also to be considered will be the cost of drilling, completing and equipping said wells, the allocation of these costs as well as the actual operating costs and charges for supervision, designation of Colgate as operator of the wells,

and a 200% charge for risk involved in drilling said wells. Said area is located approximately 16 miles southwest of Artesia, New Mexico.  
Current Argus, August 14, 2021  
04865813