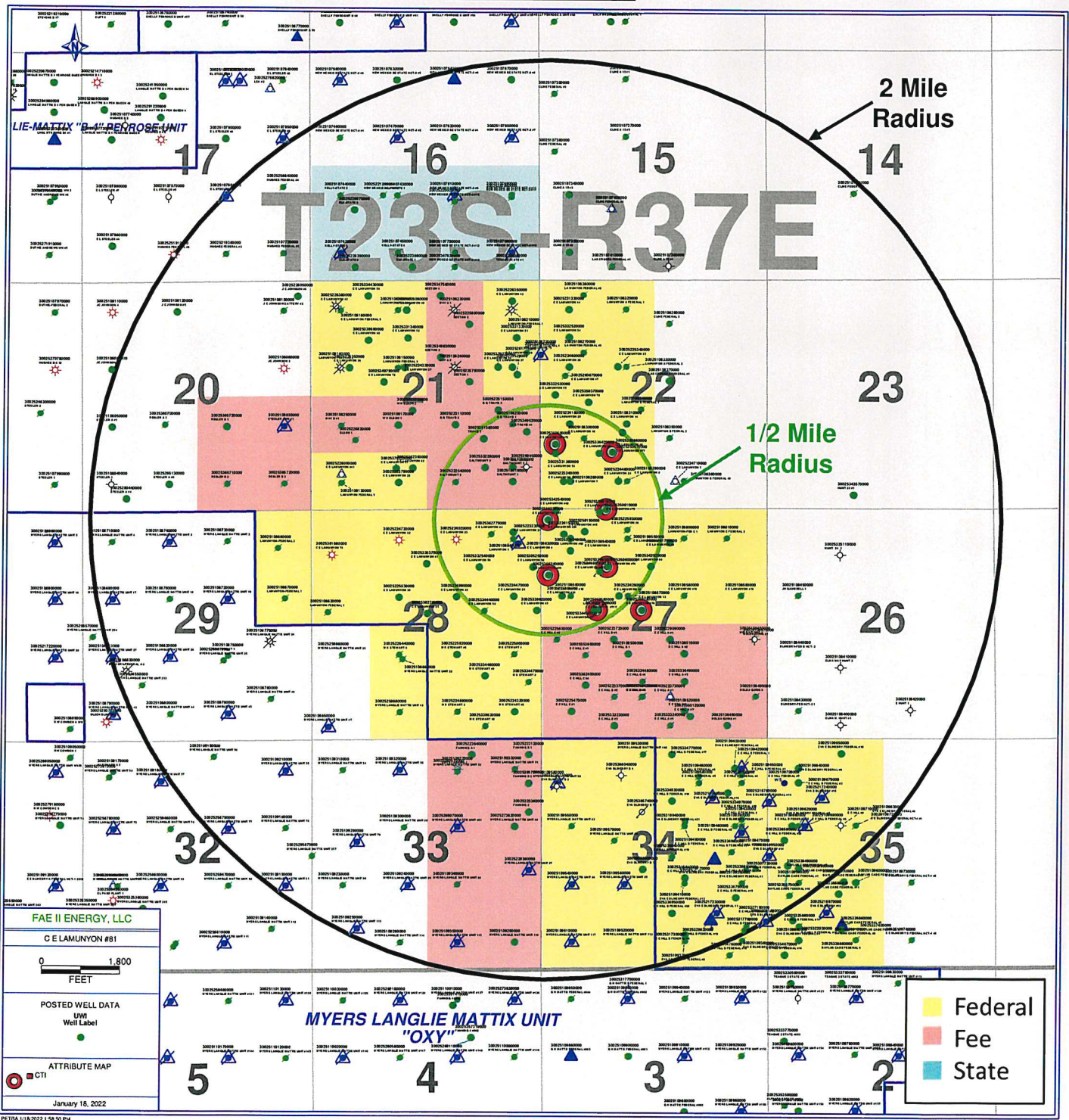


V. Exhibit A8 shows 50 unique well locations within a 1/2 mile radius of the proposed new drill injector location, and 317 unique well locations within a 2 mile radius.

C E LAMUNYON #81

API: 30-025-35932



Part VI.

Following Exhibits, B1-B8, are the tabulation of the wells with each well's type, construction, date drilled, location, depth, and completion date of wells within a ½ mile radius that are displayed in Exhibits A1-A8. The plugged well wellbore diagrams are displayed in Exhibits C1-C35.

Exhibit B1

C E LAMUNYON #77

API: 30-025-35057

1/2 Mile Radius	UWI/API	OPERATOR	WELL LABEL	ID	WELL TYPE	CURRENT ZONE	Distance from CE LAMUNYON #77 (feet)	SPUD DATE	COMP DATE	TOWNSHIP	RANGE	SECTION	FOOTAGE
	30025350570000	FAE II Operating LLC	C E LAMUNYON #77	9600	OIL	[58900] TEAGUE;SIMPSON	0	3/6/2001	5/7/2001	235	37E	22	1650 FWL 1330 FSL
	3002534420000	FAE II Operating LLC	C E LAMUNYON 60	5940	OIL	[58300] TEAGUE;PADDOCK-BLINEBRY	310.12	8/13/1996	9/10/1996	235	37E	22	1340 FWL 1300 FSL
	3002536060000	FAE II Operating LLC	C E LAMUNYON 46	7600	OIL	[33600] IMPERIAL-TUBB-DRINKARD	505.81	10/29/1978	11/14/1978	235	37E	22	1880 FWL 1780 FSL
	3002524460000	FAE II Operating LLC	C E LAMUNYON 28	5900	OIL	[58300] TEAGUE;PADDOCK-BLINEBRY	682.51	2/28/1968	3/23/1968	235	37E	22	1780 FWL 660 FSL
	30025108310000	FAE II Operating LLC	C E LAMUNYON 14	9580	OIL	[58300] TEAGUE;PADDOCK-BLINEBRY	729.01	2/27/1950	7/10/1950	235	37E	22	1980 FWL 1980 FSL
	30025108300000	OXY USA INC	C E LAMUNYON 10	9475	PLUGOIL	Plugged	736.43	5/26/1949	10/27/1949	235	37E	22	990 FWL 1650 FSL
	30025108290000	OXY USA INC	C E LAMUNYON 8	9446	PLUGOIL	Plugged	748.05	2/2/1949	5/1/1949	235	37E	22	1980 FWL 660 FSL
	30025108340000	GULF OIL CORPORATION	LAMUNYON B FEDERAL 1	3728	PLUGOIL	Plugged	1179.51	6/20/1959	7/8/1959	235	37E	22	2310 FWL 2310 FSL
	30025108280000	FAE II Operating LLC	C E LAMUNYON 7	9460	OIL	[58360] TEAGUE;DEVONIAN, NORTH ; [96599] TEAGUE;ABO, MID	1187.68	10/15/1948	1/15/1949	235	37E	22	660 FWL 660 FSL
	30025224160000	FAE II Operating LLC	C E LAMUNYON 25	5950	OIL	[58300] TEAGUE;PADDOCK-BLINEBRY	1190.78	1/25/1968	2/17/1968	235	37E	22	660 FWL 1980 FSL
	3002530370000	FAE II Operating LLC	C E LAMUNYON 70	5900	OIL	[58300] TEAGUE;PADDOCK-BLINEBRY	1275.88	5/22/2000	6/28/2000	235	37E	22	1100 FWL 2475 FSL
	3002523240000	FAE II Operating LLC	C E LAMUNYON 20	6400	OIL	[58300] TEAGUE;PADDOCK-BLINEBRY	1316.12	11/7/1967	1/15/1968	235	37E	22	510 FWL 660 FSL
	30025351360000	FAE II Operating LLC	C E LAMUNYON 53	6000	OIL	[58300] TEAGUE;PADDOCK-BLINEBRY	1319.93	10/23/1995	11/16/1995	235	37E	22	330 FWL 1300 FSL
	30025350610000	FAE II Operating LLC	C E LAMUNYON #75	9572	OIL	[58900] TEAGUE;SIMPSON	1324.71	2/1/2001	3/25/2001	235	37E	22	1505 FWL 10 FSL
	30025350590000	FAE II Operating LLC	C E LAMUNYON #73	9883	OIL	[58900] TEAGUE;SIMPSON	1333.24	9/9/2001	8/9/1959	235	37E	22	330 FWL 1510 FSL
	30025108350000	OXY USA INC	LAMUNYON B FEDERAL 2	3700	PLUGOIL	Plugged	1360.18	5/29/2001	8/9/1959	235	37E	22	2310 FEL 1650 FSL
	3002539610000	FAE II Operating LLC	C E LAMUNYON #64	5950	OIL	[58300] TEAGUE;PADDOCK-BLINEBRY	1408.9	7/25/1959	10/7/1997	235	37E	27	1340 FWL 50 FSL
	30025224710000	FAE II Operating LLC	C E LAMUNYON 1	6281	SWD	[96121] SWD;SAN ANDRES	1602.56	9/6/1997	4/6/1968	235	37E	22	2180 FEL 660 FSL
	30025108360000	CHEVRON U S A INCORPORATED	LAMUNYON B FEDERAL #3	3678	PLUGOIL	Plugged	1786.69	3/25/1959	9/11/1959	235	37E	27	1980 FEL 660 FSL
	3002525930000	OXY USA INC	C E LAMUNYON 39	6300	OIL	[58300] TEAGUE;PADDOCK-BLINEBRY	1872.66	5/20/1968	6/20/1968	235	37E	27	1980 FWL 460 FSL
	30025342540000	FAE II Operating LLC	C E LAMUNYON #68	5950	OIL	[58300] TEAGUE;PADDOCK-BLINEBRY ; [58360] IMPERIAL-TUBB-DRINKARD ; [58360] TEAGUE;PADDOCK-BLINEBRY ; [58360] TEAGUE;DEVONIAN, NORTH	1874.39	12/17/1997	4/15/1998	235	37E	27	330 FWL 10 FSL
	30025332350000	FAE II Operating LLC	C E LAMUNYON 55	6000	OIL	[58360] IMPERIAL-TUBB-DRINKARD ; [58360] TEAGUE;PADDOCK-BLINEBRY ; [58360] TEAGUE;DEVONIAN, NORTH	1939.36	1/23/1996	2/11/1996	235	37E	22	330 FWL 2620 FNL
	30025259190000	FAE II Operating LLC	C E LAMUNYON #45	7600	OIL	[58360] IMPERIAL-TUBB-DRINKARD ; [58360] TEAGUE;PADDOCK-BLINEBRY ; [58360] TEAGUE;DEVONIAN, NORTH	1939.36	6/30/1978	9/5/1978	235	37E	27	990 FWL 500 FNL
	30025225340000	FAE II Operating LLC	C E LAMUNYON 35	5892	OIL	[58300] TEAGUE;PADDOCK-BLINEBRY	1968.76	4/19/1968	6/1/1968	235	37E	22	1780 FWL 1980 FNL
	30025108330000	OXY USA INC	LAMUNYON A FEDERAL 2	3705	PLUGOIL	Plugged	1991.29	4/12/1959	5/9/1959	235	37E	22	1980 FWL 1980 FNL
	30025269450000	V-F PETROLEUM INCORPORATED	SALTMOUNT 1	7384	DRY	Plugged	2005.61	7/27/1980	8/21/1980	235	37E	21	330 FEL 990 FSL
	30025108850000	ARCH PETROLEUM INCORPORATED	C E LAMUNYON #11	9844	OIL	[58300] TEAGUE;PADDOCK-BLINEBRY	2018.45	11/6/1949	2/20/1950	235	37E	27	1980 FWL 660 FNL
	30025349520000	FAE II Operating LLC	G G TRAVIS #4	6000	OIL	[58300] TEAGUE;PADDOCK-BLINEBRY	2038.53	3/23/2000	5/2/2000	235	37E	27	560 FWL 2180 FNL
	30025266670000	ARCH PETROLEUM INCORPORATED	C E LAMUNYON 47	7500	PLUGOIL	Plugged	2079.33	11/28/1978	1/1/1979	235	37E	22	330 FEL 1800 FSL
	30025108370000	CAMERON OIL & GAS INC	LAS CRUCES A FEDERAL #1	3710	OIL	[37240] LANGLE MATTX; 7 RVRS-Q-GRAYBURG	2102.01	4/30/1959	5/15/1959	235	37E	22	2310 FEL 2310 FNL
	30025359920000	FAE II Operating LLC	C E LAMUNYON #81	9550	OIL	[58900] TEAGUE;SIMPSON	2154.09	3/4/2003	5/11/2003	235	37E	27	150 FWL 230 FNL
	30025224150000	FAE II Operating LLC	C E LAMUNYON #24	5935	OIL	[37240] LANGLE MATTX; 7 RVRS-Q-GRAYBURG ; [58300] TEAGUE;PADDOCK-BLINEBRY	2196.55	1/24/1968	2/19/1968	235	37E	27	510 FWL 560 FNL
	30025224600000	FAE II Operating LLC	C E LAMUNYON 30	6300	OIL	[58300] TEAGUE;PADDOCK-BLINEBRY	2205.6	3/6/1968	3/30/1968	235	37E	22	660 FWL 1980 FNL
	30025108540000	FAE II Operating LLC	C E LAMUNYON 9	9852	OIL	[85960] TEAGUE;ABO (GAS) ; [96133] SWD;SIMPSON	2213.1	5/18/1949	10/21/1949	235	37E	27	660 FWL 660 FNL
	30025377600000	FAE II Operating LLC	SALTMOUNT 5	3735	OIL	[37240] LANGLE MATTX; 7 RVRS-Q-GRAYBURG	2332.42	3/10/2007	4/30/2007	235	37E	21	660 FEL 990 FSL
	30025108270000	CHEVRON U S A INCORPORATED	LAMUNYON FEDERAL #3	3635	PLUGOIL	Plugged	2389.99	5/30/1959	6/14/1959	235	37E	22	990 FWL 1650 FNL
	30025108190000	FAE II Operating LLC	SALTMOUNT 1	9600	OIL	[58300] TEAGUE;PADDOCK-BLINEBRY	2401.89	3/31/1948	7/18/1948	235	37E	21	660 FEL 660 FSL
	30025108200000	GULF OIL CORP	G G TRAVIS 1	9662	PLUGOIL	Plugged	2403.82	7/1/1948	12/3/1948	235	37E	21	660 FEL 1980 FSL
	30025379240000	FAE II Operating LLC	C E LAMUNYON #90	3750	OIL	[37240] LANGLE MATTX; 7 RVRS-Q-GRAYBURG	2467.24	3/20/2007	4/21/2007	235	37E	27	660 FWL 940 FNL
	30025261760000	FAE II Operating LLC	C E LAMUNYON 48	7900	OIL	[85960] TEAGUE;ABO (GAS)	2478.26	12/20/1978	3/1/1979	235	37E	27	2310 FEL 760 FNL
	30025108600000	CHEVRON U S A INCORPORATED	LAMUNYON-FED C 1	3675	PLUGOIL	Plugged	2593.08	9/28/1959	10/13/1959	235	37E	27	1980 FEL 660 FNL

Exhibit B2

C E LAMUNYON #73

API: 30-025-35059

UWI/API	OPERATOR	WELL LABEL	ID	WELL TYPE	CURRENT ZONE	Distance from C E LAMUNYON #73 (feet)	SPUD DATE	COMP DATE	TOWNSHIP	RANGE	SECTION	FOOTAGE
30025350590000	FAE II Operating LLC	C E LAMUNYON #73	9683	OIL	[58900] TEAGUE;SIMPSON	0	5/29/2001	9/9/2001	235	37E	22	330 FWL 1510 FSL
30025331360000	FAE II Operating LLC	C E LAMUNYON 53	6000	OIL	[58300] TEAGUE;PADDOCK-BLINBERY	211.02	10/23/1995	11/16/1995	235	37E	22	330 FWL 1300 FSL
30025224160000	FAE II Operating LLC	C E LAMUNYON 25	5950	OIL	[58300] TEAGUE;PADDOCK-BLINBERY	572.37	1/25/1968	2/17/1968	235	37E	22	660 FWL 1980 FSL
30025108300000	OXY USA INC	C E LAMUNYON 10	9475	PLUGGOL	Plugged	672.95	5/26/1949	10/27/1949	235	37E	22	990 FWL 1650 FSL
30025294520000	FAE II Operating LLC	G G TRAVIS #4	6000	OIL	[58300] TEAGUE;PADDOCK-BLINBERY	722.62	3/23/2000	5/12/2000	235	37E	21	330 FWL 1800 FSL
30025269450000	V-F PETROLEUM INCORPORATED	SALTMOUNT 1	7984	DRY	Plugged	839.1	7/27/1980	8/21/1980	235	37E	21	330 FEL 990 FSL
30025232320000	FAE II Operating LLC	C E LAMUNYON 20	6400	OIL	[58300] TEAGUE;PADDOCK-BLINBERY	870.67	11/7/1967	1/15/1968	235	37E	22	510 FWL 660 FSL
30025108280000	FAE II Operating LLC	C E LAMUNYON 7	9460	OIL	[58300] TEAGUE;PADDOCK-BLINBERY	914.46	10/15/1948	1/15/1949	235	37E	22	660 FWL 660 FSL
30025334420000	FAE II Operating LLC	C E LAMUNYON 60	5940	OIL	[58300] TEAGUE;PADDOCK-BLINBERY	1033.22	8/13/1996	9/10/1996	235	37E	21	1340 FWL 1300 FSL
30025108200000	GULF OIL CORP	G G TRAVIS 1	9662	PLUGGOL	Plugged	1097.53	7/1/1948	12/3/1948	235	37E	22	660 FEL 1980 FSL
30025371600000	FAE II Operating LLC	SALTMOUNT 5	3735	OIL	[37240] LANGLE MATTIK;7 RVRS-Q-GRAVBURG	1117.54	3/10/2007	4/30/2007	235	37E	21	660 FEL 990 FSL
30025332500000	FAE II Operating LLC	C E LAMUNYON 55	6000	OIL	[58300] TEAGUE;PADDOCK-BLINBERY	1138.79	1/23/1996	2/11/1996	235	37E	22	330 FWL 2620 FNL
30025303700000	FAE II Operating LLC	C E LAMUNYON 50	5900	OIL	[58300] TEAGUE;PADDOCK-BLINBERY	1228.85	5/22/2000	6/28/2000	235	37E	22	1100 FWL 2475 FSL
30025108190000	FAE II Operating LLC	SALTMOUNT 1	9600	OIL	[58300] TEAGUE;PADDOCK-BLINBERY	1305	3/31/1948	7/18/1948	235	37E	21	660 FEL 660 FSL
30025350570000	FAE II Operating LLC	C E LAMUNYON #77	9600	OIL	[58900] TEAGUE;SIMPSON	1333.24	3/6/2001	5/7/2001	235	37E	22	1650 FWL 1330 FSL
30025342540000	FAE II Operating LLC	C E LAMUNYON #68	5950	OIL	[58300] TEAGUE;PADDOCK-BLINBERY	1520.8	12/17/1997	4/15/1998	235	37E	27	330 FWL 10 FNL
3002525150000	FAE II Operating LLC	G G TRAVIS 3	6377	OIL	[33600] IMPERIAL;TUBB-DRINKARD	1544.25	4/8/1968	5/2/1968	235	37E	21	990 FEL 2310 FSL
30025260660000	FAE II Operating LLC	C E LAMUNYON 46	7600	OIL	[33600] IMPERIAL;TUBB-DRINKARD	1570.45	10/19/1978	11/14/1978	235	37E	22	1880 FWL 1780 FSL
30025260670000	ARCH PETROLEUM INCORPORATED	C E LAMUNYON 47	7500	PLUGGOL	Plugged	1595.05	7/1/1978	1/1/1979	235	37E	22	560 FWL 2180 FNL
30025351380000	FAE II Operating LLC	TRAVIS 5	5930	OIL	[58300] TEAGUE;PADDOCK-BLINBERY	1665.47	8/25/2000	10/24/2000	235	37E	21	1330 FEL 1650 FSL
30025244600000	FAE II Operating LLC	C E LAMUNYON 28	5900	OIL	[58300] TEAGUE;PADDOCK-BLINBERY	1681.45	7/28/1968	3/25/1968	235	37E	22	1780 FWL 660 FSL
30025108310000	FAE II Operating LLC	C E LAMUNYON 14	9580	OIL	[58300] TEAGUE;PADDOCK-BLINBERY	1710.92	2/27/1950	7/10/1950	235	37E	22	1980 FWL 1980 FSL
30025332280000	FAE II Operating LLC	SALTMOUNT 3	6000	OIL	[58300] TEAGUE;PADDOCK-BLINBERY	1711.01	1/11/1996	2/2/1996	235	37E	21	1300 FEL 990 FSL
30025393200000	FAE II Operating LLC	C E LAMUNYON #81	9550	OIL	[58900] TEAGUE;SIMPSON	1748	3/4/2003	5/11/2003	235	37E	27	150 FWL 230 FNL
30025246000000	FAE II Operating LLC	C E LAMUNYON 30	6300	OIL	[58300] TEAGUE;PADDOCK-BLINBERY	1808.47	3/4/1968	3/30/1968	235	37E	22	660 FWL 1980 FNL
30025261770000	FAE II Operating LLC	C E LAMUNYON #49	7600	OIL	[33600] IMPERIAL;TUBB-DRINKARD	1838.23	7/18/1979	9/5/1979	235	37E	21	550 FEL 2150 FNL
30025108290000	OXY USA INC	C E LAMUNYON 8	9446	PLUGGOL	Plugged	1863.2	2/2/1949	5/1/1949	235	37E	22	1980 FWL 660 FSL
30025339610000	FAE II Operating LLC	C E LAMUNYON #64	5950	OIL	[58300] TEAGUE;PADDOCK-BLINBERY	1864.21	9/6/1997	10/7/1997	235	37E	27	1340 FWL 50 FNL
30025350610000	FAE II Operating LLC	C E LAMUNYON #75	9572	OIL	[58900] TEAGUE;SIMPSON	1911.94	3/25/2001	3/25/2001	235	37E	22	1505 FWL 10 FSL
30025252520000	FAE II Operating LLC	C E LAMUNYON 37	5900	OIL	[58300] TEAGUE;PADDOCK-BLINBERY	2038.54	5/6/1968	5/28/1968	235	37E	21	660 FEL 1980 FNL
30025224150000	FAE II Operating LLC	C E LAMUNYON #24	5935	OIL	[37240] LANGLE MATTIK;7 RVRS-Q-GRAVBURG	2078.47	1/24/1968	2/19/1968	235	37E	27	510 FWL 560 FNL
30025359420000	OXY USA INC	C E LAMUNYON 79	5350	PLUGGOL	[58300] TEAGUE;PADDOCK-BLINBERY	2088.16	8/1/2002	9/16/2002	235	37E	21	10 FEL 1700 FNL
30025259190000	FAE II Operating LLC	C E LAMUNYON #45	7600	OIL	[33600] IMPERIAL;TUBB-DRINKARD	2123.3	6/30/1978	9/5/1978	235	37E	27	990 FWL 500 FNL
30025108400000	GULF OIL CORPORATION	LAMUNYON B FEDERAL 1	3728	PLUGGOL	TEAGUE;DEVONIAN, NORTH	2129.79	6/20/1959	7/8/1959	235	37E	22	2310 FWL 2310 FSL
30025108400000	FAE II Operating LLC	C E LAMUNYON 9	9852	OIL	[85960] TEAGUE;ARO (GAS) ; [56133] SWD;SIMPSON	2198.02	5/18/1949	10/21/1949	235	37E	27	660 FWL 660 FNL
30025108270000	CHEVRON U S A INCORPORATED	LAMUNYON FEDERAL #3	3635	PLUGGOL	Plugged	2206.11	5/30/1959	6/14/1959	235	37E	22	990 FWL 1650 FNL
30025108220000	ARCH PETROLEUM INCORPORATED	LAMUNYON FEDERAL 4	3602	PLUGGOL	Plugged	2212.35	8/10/1959	8/24/1959	235	37E	21	330 FEL 1650 FNL
30025379230000	FAE II Operating LLC	C E LAMUNYON 88	3707	OIL	[58300] TEAGUE;PADDOCK-BLINBERY	2221.76	3/3/2007	4/16/2007	235	37E	21	990 FEL 1980 FNL
30025232300000	FAE II Operating LLC	C E LAMUNYON 21	6300	OIL	[58300] TEAGUE;PADDOCK-BLINBERY	2245.75	12/4/1967	1/12/1968	235	37E	28	660 FEL 510 FNL
30025253400000	FAE II Operating LLC	C E LAMUNYON 35	5892	OIL	[58300] TEAGUE;PADDOCK-BLINBERY	2290.08	4/19/1968	6/1/1968	235	37E	22	1780 FWL 1980 FNL
30025231100000	FAE II Operating LLC	G G TRAVIS 2	6300	OIL	[33600] IMPERIAL;TUBB-DRINKARD	2358.29	11/9/1967	1/3/1968	235	37E	21	1980 FEL 1980 FSL
30025108640000	GYPST OIL COMPANY	LAMUNYON 1	539	PLUGGOL	Plugged	2384.09	12/13/1933	1/21/1936	235	37E	28	660 FEL 660 FNL
30025108300000	OXY USA INC	LAMUNYON A FEDERAL 2	3705	PLUGGOL	Plugged	2419.88	4/12/1959	5/3/1959	235	37E	22	1980 FWL 1980 FNL
30025108690000	GULF OIL CORP	C E LAMUNYON 6	10218	PLUGGOL	Plugged	2440.86	10/4/1947	3/24/1948	235	37E	28	554 FEL 766 FNL
30025257900000	FAE II Operating LLC	SECTON 1	6400	OIL	[33600] IMPERIAL;TUBB-DRINKARD	2458.54	7/21/1968	12/8/1968	235	37E	21	1650 FEL 2310 FNL
30025222540000	OXY USA INC	SALTMOUNT 2	6396	PLUGGOL	Plugged	2462.03	9/15/1967	10/20/1967	235	37E	21	1980 FEL 660 FSL
30025379240000	FAE II Operating LLC	C E LAMUNYON 980	3750	OIL	[37240] LANGLE MATTIK;7 RVRS-Q-GRAVBURG	2475.23	3/20/2007	4/21/2007	235	37E	27	660 FWL 940 FNL
30025332520000	FAE II Operating LLC	C E LAMUNYON 54	6005	OIL	[58300] TEAGUE;PADDOCK-BLINBERY	2480.79	2/4/1996	2/23/1996	235	37E	22	660 FWL 1300 FNL
30025362770000	OXY USA INC	C E LAMUNYON 84	5700	PLUGGOL	Plugged	2543.47	5/1/2003	6/16/2003	235	37E	28	1160 FEL 545 FNL
30025225930000	OXY USA INC	C E LAMUNYON 39	6300	PLUGGOL	Plugged	2581.07	6/20/1968	6/20/1968	235	37E	27	1980 FWL 460 FNL
30025331330000	FAE II Operating LLC	C E LAMUNYON 51	6000	OIL	[58300] TEAGUE;PADDOCK-BLINBERY	2617.7	9/25/1995	10/19/1995	235	37E	21	560 FEL 1300 FNL

Exhibit B3

C E LAMUNYON #74

API: 30-025-35060

UWI/API	OPERATOR	WELL LABEL	ID	WELL TYPE	CURRENT ZONE	Distance from CE LAMUNYON #74 (Feet)	SPUD DATE	COMP DATE	TOWNSHIP	RANGE	SECTION	FOOTAGE
30025350600000	FAE II Operating LLC	CE LAMUNYON #74	9550	OIL	[58900] TEAGUE:SIMPSON	0	10/21/2000	12/10/2000	23S	37E	27	1515 FWL 1310 FNL
30025396000000	ARCH PETROLEUM INCORPORATED	LAMUNYON C E 63	1005	JNK	Plugged	196.64	7/19/1997	7/24/1997	23S	37E	27	1340 FWL 1400 FNL
30025341530000	FAE II Operating LLC	CE LAMUNYON #69Y	5940	OIL	[58900] TEAGUE:PADDOCK-BLINEBERRY	207.26	7/26/1997	9/18/1997	23S	37E	27	1340 FWL 1420 FNL
30025224280000	FAE II Operating LLC	CE LAMUNYON 26	5925	OIL	[58900] TEAGUE:PADDOCK-BLINEBERRY	723.67	7/18/1968	3/16/1968	23S	37E	27	1780 FWL 1980 FNL
30025108550000	ARCH PETROLEUM INCORPORATED	CE LAMUNYON #11	9844	PLUGOIL	Plugged	794.68	11/6/1949	2/20/1950	23S	37E	27	1980 FWL 660 FNL
30025108570000	CHEVRON U S A INCORPORATED	CE LAMUNYON 13	9850	PLUGOIL	Plugged	819.08	2/23/1950	5/30/1950	23S	37E	27	1980 FWL 1980 FNL
30025379240000	FAE II Operating LLC	CE LAMUNYON #90	3750	OIL	[37240] LANGUE MATTIX:7 RVRS-Q-GRAVBURG	937.45	3/20/2007	4/21/2007	23S	37E	27	660 FWL 940 FNL
30025215930000	OXY USA INC	CE LAMUNYON 39	6300	PLUGOIL	Plugged	964.75	5/20/1968	6/20/1968	23S	37E	27	1980 FWL 460 FNL
30025291900000	FAE II Operating LLC	CE LAMUNYON #45	7600	OIL	[33600] IMPERIAL:TUBB-DRINKARD : [58300] TEAGUE:PADDOCK-BLINEBERRY : [58360] TEAGUE:DEVONIAN, NORTH	968.32	6/30/1978	9/5/1978	23S	37E	27	990 FWL 500 FNL
30025342020000	FAE II Operating LLC	CE LAMUNYON 66	5940	OIL	[58300] TEAGUE:PADDOCK-BLINEBERRY	1004.58	11/15/1997	1/6/1998	23S	37E	27	2520 FWL 1300 FNL
30025351060000	FAE II Operating LLC	CE LAMUNYON #71Y	9560	OIL	[58900] TEAGUE:SIMPSON	1019.95	7/19/2000	10/4/2000	23S	37E	27	1280 FWL 2305 FNL
30025350580000	ARCH PETROLEUM INCORPORATED	LAMUNYON C E 71	7417	JNK	Plugged	1020.5	6/21/2000	7/18/2000	23S	37E	27	1310 FWL 2310 FNL
30025344450000	FAE II Operating LLC	CE LAMUNYON 57	5940	OIL	[58300] TEAGUE:PADDOCK-BLINEBERRY	1044.63	6/25/1996	9/19/1996	23S	37E	27	1200 FWL 2310 FNL
30025108540000	FAE II Operating LLC	CE LAMUNYON 9	9852	OIL	[85960] TEAGUE:ABO (GAS) : [96133] SWD:SIMPSON	1080.4	5/18/1949	10/21/1949	23S	37E	27	660 FWL 660 FNL
30025108560000	ARCH PETROLEUM INCORPORATED	CE LAMUNYON #12	9470	PLUGOIL	Plugged	1082.18	11/6/1949	2/12/1950	23S	37E	27	660 FWL 1980 FNL
30025225230000	FAE II Operating LLC	CE LAMUNYON #34	6278	OIL	[33600] IMPERIAL:TUBB-DRINKARD : [58300] TEAGUE:PADDOCK-BLINEBERRY	1246.71	4/18/1968	5/15/1968	23S	37E	27	460 FWL 1980 FNL
30025224150000	FAE II Operating LLC	CE LAMUNYON #24	5935	OIL	[37240] LANGUE MATTIX:7 RVRS-Q-GRAVBURG : [58300] TEAGUE:PADDOCK-BLINEBERRY	1262.65	1/24/1968	2/19/1968	23S	37E	27	510 FWL 560 FNL
30025393610000	FAE II Operating LLC	CE LAMUNYON #64	5950	OIL	[58300] TEAGUE:PADDOCK-BLINEBERRY	1275.59	9/6/1997	10/7/1997	23S	37E	27	1340 FWL 50 FNL
30025350740000	FAE II Operating LLC	CE LAMUNYON #76	9800	OIL	[58900] TEAGUE:SIMPSON	1282.32	9/17/2000	11/20/2000	23S	37E	27	2310 FWL 2310 FNL
30025350610000	FAE II Operating LLC	CE LAMUNYON #75	9572	OIL	[58900] TEAGUE:SIMPSON	1320.83	4/11/2001	3/25/2001	23S	37E	27	1505 FWL 10 FSL
30025356240000	FAE II Operating LLC	CE LAMUNYON #80	9600	OIL	[58900] TEAGUE:SIMPSON	1378.28	6/17/2003	6/17/2003	23S	37E	27	150 FWL 1500 FNL
30025361760000	FAE II Operating LLC	CE LAMUNYON 48	7600	OIL	[85960] TEAGUE:ABO (GAS)	1544.82	12/20/1978	3/1/1979	23S	37E	27	2310 FWL 760 FNL
30025237120000	FAE II Operating LLC	E C HILL B #3	6007	OIL	[37240] LANGUE MATTIX:7 RVRS-Q-GRAVBURG : [58300] TEAGUE:PADDOCK-BLINEBERRY	1679.64	12/5/1967	1/2/1968	23S	37E	27	1650 FWL 2310 FSL
30025305250000	FAE II Operating LLC	CE LAMUNYON 50	5960	OIL	[58300] TEAGUE:PADDOCK-BLINEBERRY	1724.79	2/16/1989	7/6/1989	23S	37E	28	210 FWL 1310 FNL
30025359320000	FAE II Operating LLC	CE LAMUNYON #81	9550	OIL	[58900] TEAGUE:SIMPSON	1751.24	3/4/2003	5/11/2003	23S	37E	27	150 FWL 20 FNL
30025342540000	FAE II Operating LLC	CE LAMUNYON #68	5950	OIL	[58300] TEAGUE:PADDOCK-BLINEBERRY	1769.04	12/17/1997	4/15/1998	23S	37E	27	330 FWL 10 FNL
30025108600000	CHEVRON U S A INCORPORATED	LAMUNYON-FED C 1	3675	PLUGOIL	Plugged	1889.14	9/28/1959	10/13/1959	23S	37E	27	1980 FWL 660 FNL
30025108580000	CHEVRON U S A INCORPORATED	CE LAMUNYON #16	5940	PLUGOIL	Plugged	1903.11	5/25/1951	1/15/1952	23S	37E	27	1980 FWL 1980 FNL
30025339620000	FAE II Operating LLC	CE LAMUNYON 65	5900	OIL	[58300] TEAGUE:PADDOCK-BLINEBERRY	1915.83	8/16/1997	10/17/1997	23S	37E	28	125 FEL 2310 FNL
30025244600000	FAE II Operating LLC	CE LAMUNYON 28	5900	OIL	[58300] TEAGUE:PADDOCK-BLINEBERRY	1984.96	2/28/1968	3/25/1968	23S	37E	22	1780 FWL 660 FSL
30025108290000	OXY USA INC	CE LAMUNYON 8	9446	PLUGOIL	Plugged	2020.77	2/2/1949	5/1/1949	23S	37E	22	1980 FWL 660 FSL
30025256000000	OXY USA INC	E C HILL C #2	5994	PLUGOIL	Plugged	2043.47	5/17/1968	6/13/1968	23S	37E	27	330 FWL 2310 FSL
30025108500000	FAE II Operating LLC	E C HILL B #1	9785	OIL	[33600] IMPERIAL:TUBB-DRINKARD : [58900] TEAGUE:SIMPSON	2059.72	8/8/1950	11/10/1950	23S	37E	27	1980 FWL 1980 FSL
30025353650000	OXY USA INC	E C HILL C #3	9580	PLUGOIL	Plugged	2098.29	8/13/2002	11/20/2002	23S	37E	27	990 FWL 1950 FSL
30025108630000	GULF OIL CORP	CE LAMUNYON 6	10218	PLUGOIL	Plugged	2145.57	10/4/1947	3/24/1948	23S	37E	28	554 FEL 766 FNL
30025108280000	FAE II Operating LLC	CE LAMUNYON 7	9460	OIL	[58360] IMPERIAL:TUBB-DRINKARD : [58300] TEAGUE:ABO, MID	2155.6	10/15/1948	1/15/1949	23S	37E	22	660 FWL 660 FSL
30025229090000	FAE II Operating LLC	E C HILL A #4	7069	OIL	[33600] IMPERIAL:TUBB-DRINKARD : [58300] TEAGUE:PADDOCK-BLINEBERRY	2219.7	1/17/1969	4/1/1969	23S	37E	27	2310 FEL 2310 FSL
30025223240000	FAE II Operating LLC	CE LAMUNYON 20	6400	OIL	[58300] TEAGUE:PADDOCK-BLINEBERRY	2220.53	11/7/1967	1/15/1968	23S	37E	22	510 FWL 660 FSL
30025244710000	FAE II Operating LLC	CE LAMUNYON 29	5900	OIL	[37240] LANGUE MATTIX:7 RVRS-Q-GRAVBURG	2272.7	12/16/1968	3/16/1968	23S	37E	28	660 FEL 1980 FNL
30025108640000	GYPST OIL COMPANY	LAMUNYON 1	539	PLUGOIL	Plugged	2275.41	12/13/1933	1/21/1936	23S	37E	28	660 FEL 660 FNL
30025223230000	FAE II Operating LLC	CE LAMUNYON 21	6300	OIL	[58300] TEAGUE:PADDOCK-BLINEBERRY : [97267] WILD CAT G-01 S233728A:SAN ANDRES	2324	12/4/1967	1/12/1968	23S	37E	28	660 FEL 510 FNL
3002524710000	FAE II Operating LLC	CE LAMUNYON 1	6281	SWD	[96121] SWD:SAN ANDRES	2516.06	3/14/1968	4/6/1968	23S	37E	22	2180 FEL 660 FSL
30025394420000	FAE II Operating LLC	CE LAMUNYON 60	5940	OIL	[58300] TEAGUE:PADDOCK-BLINEBERRY	2618.86	8/13/1996	9/10/1996	23S	37E	22	1340 FWL 1300 FSL
30025350570000	FAE II Operating LLC	CE LAMUNYON #77	9600	OIL	[58900] TEAGUE:SIMPSON	2640.65	3/6/2001	5/7/2001	23S	37E	22	1650 FWL 1330 FSL

C E LAMUNYON #75

API: 30-025-35061

1/2 Mile Radius	UWI/API	OPERATOR	WELL LABEL	ID	WELL TYPE	CURRENT ZONE	Distance from CE LAMUNYON #75 (feet)	SPUD DATE	COMP DATE	TOWNSHIP	RANGE	SECTION	FOOTAGE
	30025350610000	FAE II Operating LLC	CE LAMUNYON #75	9572	OIL	[58900] TEAGUE/SIMPSON	0	2/1/2001	3/25/2001	23S	37E	22	1505 FWL 10 FSL
	3002539610000	FAE II Operating LLC	CE LAMUNYON #64	5950	OIL	[58300] TEAGUE/PADDOCK-BLINEBERRY	173.85	9/6/1997	10/7/1997	23S	37E	27	1340 FWL 50 FNL
	30025252930000	OXY USA INC	CE LAMUNYON 39	6300	PLUGOIL	Plugged	673.23	5/20/1968	6/20/1968	23S	37E	27	1980 FWL 460 FNL
	30025224660000	FAE II Operating LLC	CE LAMUNYON 28	5900	OIL	[58300] TEAGUE/PADDOCK-BLINEBERRY	703.62	2/28/1968	3/25/1968	23S	37E	22	1780 FWL 660 FSL
	30025259190000	FAE II Operating LLC	CE LAMUNYON #45	7600	OIL	[33600] IMPERIAL-TUBB-DRINKARD : [58300] TEAGUE/PADDOCK-BLINEBERRY : [58930] TEAGUE/DEVONIAN, NORTH	720.79	6/30/1978	9/5/1978	23S	37E	27	990 FWL 500 FNL
	30025108290000	OXY USA INC	CE LAMUNYON 8	9446	PLUGOIL	Plugged	803.72	2/2/1949	5/1/1949	23S	37E	22	1980 FWL 660 FSL
	30025108550000	ARCH PETROLEUM INCORPORATED	CE LAMUNYON #11	9894	PLUGOIL	Plugged	826.18	11/6/1949	2/20/1950	23S	37E	27	1980 FWL 660 FNL
	30025108280000	FAE II Operating LLC	CE LAMUNYON 7	9460	OIL	[58360] TEAGUE/DEVONIAN, NORTH : [96599] TEAGUE/ABO, MMD	1068.12	10/15/1948	1/15/1949	23S	37E	22	660 FWL 660 FSL
	30025108540000	FAE II Operating LLC	CE LAMUNYON 9	9852	OIL	[89960] TEAGUE/ABO (GAS) : [96133] SMD/SIMPSON	1072.43	5/18/1949	10/21/1949	23S	37E	27	660 FWL 660 FNL
	30025224150000	FAE II Operating LLC	CE LAMUNYON #24	5935	OIL	[37240] LANGUE/MATTIX-7 RVR-S-Q-GRAYBURG ; [58300] TEAGUE/PADDOCK-BLINEBERRY	1141.24	1/24/1968	2/19/1968	23S	37E	27	510 FWL 560 FNL
	30025342540000	FAE II Operating LLC	CE LAMUNYON #68	5950	OIL	[58300] TEAGUE/PADDOCK-BLINEBERRY	1174.62	12/17/1997	4/15/1998	23S	37E	27	330 FWL 10 FNL
	30025232240000	FAE II Operating LLC	CE LAMUNYON 20	6400	OIL	[58300] TEAGUE/PADDOCK-BLINEBERRY	1191.39	11/7/1967	1/15/1968	23S	37E	22	510 FWL 660 FSL
	30025379240000	FAE II Operating LLC	CE LAMUNYON #90	3750	OIL	[37240] LANGUE/MATTIX-7 RVR-S-Q-GRAYBURG	1265.56	3/20/2007	4/21/2007	23S	37E	27	660 FWL 940 FNL
	30025394420000	FAE II Operating LLC	CE LAMUNYON 60	5940	OIL	[58300] TEAGUE/PADDOCK-BLINEBERRY	1300.33	8/13/1996	9/10/1996	23S	37E	27	1340 FWL 1300 FSL
	30025350600000	FAE II Operating LLC	CE LAMUNYON #74	9550	OIL	[58300] TEAGUE/PADDOCK-BLINEBERRY	1320.83	10/21/2000	12/10/2000	23S	37E	27	1515 FWL 1310 FNL
	30025350570000	FAE II Operating LLC	CE LAMUNYON #77	9660	OIL	[58900] TEAGUE/SIMPSON	1324.71	3/6/2001	5/7/2001	23S	37E	27	1550 FWL 1390 FSL
	30025399320000	FAE II Operating LLC	CE LAMUNYON #81	9550	OIL	[58900] TEAGUE/SIMPSON	1373.69	3/4/2003	5/1/2003	23S	37E	27	1650 FWL 230 FNL
	30025396000000	ARCH PETROLEUM INCORPORATED	CE LAMUNYON #81	1005	JNK	Plugged	1416.81	7/19/1997	7/24/1997	23S	37E	27	1340 FWL 1400 FNL
	30025341530000	FAE II Operating LLC	CE LAMUNYON #63Y	5940	OIL	[58300] TEAGUE/PADDOCK-BLINEBERRY	1488.51	7/26/1997	9/18/1997	23S	37E	27	1340 FWL 1400 FNL
	30025361760000	FAE II Operating LLC	CE LAMUNYON 48	7600	OIL	[89960] TEAGUE/ABO (GAS)	1569.13	12/20/1978	3/1/1979	23S	37E	27	2310 FEL 760 FNL
	30025342020000	FAE II Operating LLC	CE LAMUNYON 66	5940	OIL	[58300] TEAGUE/PADDOCK-BLINEBERRY	1667.75	11/15/1997	1/6/1998	23S	37E	27	2520 FWL 1300 FNL
	30025274710000	FAE II Operating LLC	CE LAMUNYON 1	6281	SWD	[96121] SMD/SAN ANDRES	1712.06	3/14/1968	4/6/1968	23S	37E	22	2180 FEL 660 FSL
	30025108300000	OXY USA INC	CE LAMUNYON 10	9475	PLUGOIL	Plugged	1721.06	5/26/1949	10/27/1949	23S	37E	22	990 FWL 1650 FSL
	30025360660000	FAE II Operating LLC	CE LAMUNYON 53	6000	OIL	[58300] TEAGUE/PADDOCK-BLINEBERRY	1750.53	10/23/1995	11/16/1995	23S	37E	22	330 FWL 1300 FSL
	30025108960000	FAE II Operating LLC	CE LAMUNYON 46	7600	OIL	[33600] IMPERIAL-TUBB-DRINKARD	1806.69	10/19/1978	11/14/1978	23S	37E	22	1880 FWL 1780 FSL
	30025350590000	CHEVRON U S A INCORPORATED	LA MUNYON B FEDERAL #3	3678	PLUGOIL	Plugged	1906.53	3/25/1959	9/11/1959	23S	37E	22	1880 FWL 1780 FSL
	30025108600000	FAE II Operating LLC	CE LAMUNYON #73	9883	OIL	[58900] TEAGUE/SIMPSON	1911.94	5/29/2001	9/9/2001	23S	37E	22	380 FWL 1510 FSL
	30025108600000	CHEVRON U S A INCORPORATED	CE LAMUNYON #73	9675	PLUGOIL	Plugged	1920.38	9/26/1959	10/13/1959	23S	37E	27	1980 FEL 660 FNL
	30025356240000	FAE II Operating LLC	CE LAMUNYON 26	5925	OIL	[58300] TEAGUE/PADDOCK-BLINEBERRY	2013.95	2/9/1968	3/16/1968	23S	37E	27	1780 FWL 1980 FSL
	30025356240000	FAE II Operating LLC	CE LAMUNYON #80	9600	OIL	[58900] TEAGUE/SIMPSON	2018.41	4/11/2003	6/17/2003	23S	37E	27	150 FWL 1500 FNL
	30025108810000	FAE II Operating LLC	CE LAMUNYON 14	9580	OIL	[58300] TEAGUE/PADDOCK-BLINEBERRY	2023.6	2/27/1950	7/10/1950	23S	37E	22	1980 FWL 1980 FSL
	30025108870000	CHEVRON U S A INCORPORATED	CE LAMUNYON 13	9850	PLUGOIL	Plugged	2051.99	2/23/1950	5/30/1950	23S	37E	27	1980 FWL 1980 FNL
	300252945160000	V-F PETROLEUM INCORPORATED	SALTMOUNT 1	7984	DRY	Plugged	2083.95	7/27/1980	8/21/1980	23S	37E	27	330 FEL 990 FSL
	30025269450000	FAE II Operating LLC	CE LAMUNYON 25	5950	OIL	[58300] TEAGUE/PADDOCK-BLINEBERRY	2150.67	1/25/1968	2/17/1968	23S	37E	22	660 FWL 1980 FSL
	30025108560000	FAE II Operating LLC	CE LAMUNYON 50	5960	OIL	[58300] TEAGUE/PADDOCK-BLINEBERRY	2155.18	2/16/1949	7/6/1989	23S	37E	28	210 FEL 1310 FNL
	30025108560000	ARCH PETROLEUM INCORPORATED	CE LAMUNYON #12	9470	PLUGOIL	Plugged	2154.69	11/6/1949	2/12/1950	23S	37E	27	660 FWL 1980 FNL
	30025108350000	OXY USA INC	LAMUNYON B FEDERAL 2	3700	PLUGOIL	Plugged	2194.3	7/25/1959	8/9/1959	23S	37E	22	2310 FEL 1650 FSL
	30025108630000	GULF OIL CORP	CE LAMUNYON 6	10218	PLUGOIL	Plugged	2195.41	10/4/1947	3/24/1948	23S	37E	28	554 FEL 766 FNL
	30025223230000	FAE II Operating LLC	CE LAMUNYON 21	6300	OIL	[58300] TEAGUE/PADDOCK-BLINEBERRY : [97267] WILD CAT G-O1 S233728A-SAN ANDRES	2220.6	12/4/1967	1/12/1968	23S	37E	28	660 FEL 510 FNL
	30025225230000	FAE II Operating LLC	CE LAMUNYON #34	6278	OIL	[33600] IMPERIAL-TUBB-DRINKARD : [58300] TEAGUE/PADDOCK-BLINEBERRY	2240.18	4/18/1968	5/15/1968	23S	37E	27	460 FWL 1980 FNL
	30025108640000	GPSY OIL COMPANY	LAMUNYON 1	599	PLUGOIL	Plugged	2260.8	12/13/1933	1/21/1936	23S	37E	28	660 FEL 660 FNL
	30025108190000	FAE II Operating LLC	SALTMOUNT 1	9600	OIL	[58300] TEAGUE/PADDOCK-BLINEBERRY	2263.49	3/31/1948	7/18/1948	23S	37E	21	660 FEL 660 FSL
	30025351060000	FAE II Operating LLC	CE LAMUNYON #71Y	9560	OIL	[58900] TEAGUE/SIMPSON	2323.75	7/19/2000	10/4/2000	23S	37E	27	1280 FWL 2305 FNL
	30025350580000	ARCH PETROLEUM INCORPORATED	LAMUNYON C E 71	7417	JNK	Plugged	2328.17	6/21/2000	7/18/2000	23S	37E	27	1310 FWL 2310 FNL
	30025334450000	FAE II Operating LLC	CE LAMUNYON 57	5940	OIL	[58300] TEAGUE/PADDOCK-BLINEBERRY	2336.11	8/25/1996	9/19/1996	23S	37E	27	1200 FWL 2310 FNL
	30025108340000	FAE II Operating LLC	SALTMOUNT 5	3735	OIL	[37240] LANGUE/MATTIX-7 RVR-S-Q-GRAYBURG	2380.46	3/10/2007	4/30/2007	23S	37E	21	660 FEL 990 FSL
	30025350740000	GULF OIL CORPORATION	LAMUNYON B FEDERAL 1	3728	PLUGOIL	Plugged	2431.32	6/20/1959	7/8/1959	23S	37E	22	2310 FWL 2310 FSL
	30025350370000	FAE II Operating LLC	CE LAMUNYON #76	9800	OIL	[58900] TEAGUE/SIMPSON	2463.91	9/17/2000	11/20/2000	23S	37E	22	1100 FWL 2475 FSL
	30025350370000	FAE II Operating LLC	CE LAMUNYON 70	5900	OIL	[58300] TEAGUE/PADDOCK-BLINEBERRY	2500.77	5/22/2000	6/28/2000	23S	37E	27	1100 FWL 2475 FSL
	30025349520000	FAE II Operating LLC	G G TRAVIS #4	6000	OIL	[58300] TEAGUE/PADDOCK-BLINEBERRY	2571.44	3/23/2000	5/2/2000	23S	37E	21	330 FEL 1800 FSL

1/2 Mile Radius

UWI/API	OPERATOR	WELL LABEL	ID	WELL TYPE	CURRENT ZONE	Distance from CE LAMUNYON #76 (feet)	SPUD DATE	COMP DATE	TOWNSHIP	RANGE	SECTION	FOOTAGE
30025350740000	FAE II Operating LLC	C E LAMUNYON #76	9800	OIL	[58900] TEAGUE;SIMPSON	0	9/17/2000	11/20/2000	235	37E	27	2310 FWL 2310 FNL
30025108570000	CHEVRON U S A INCORPORATED	C E LAMUNYON 13	9850	PLUGOIL	[58300] TEAGUE;PADDOCK-BLINEBERRY	467.98	2/23/1950	5/30/1950	235	37E	27	1980 FWL 1980 FNL
30025224280000	FAE II Operating LLC	C E LAMUNYON 26	5925	OIL	[58300] TEAGUE;PADDOCK-BLINEBERRY	626.33	2/9/1968	3/16/1968	235	37E	27	1780 FWL 1980 FNL
30025223720000	FAE II Operating LLC	E C HILL B #3	6007	OIL	[37240] LANGGIE MATTIK;7 RVRB-Q-GRAVBURG; [58300] TEAGUE;PADDOCK-BLINEBERRY	936.8	12/5/1967	1/2/1968	235	37E	27	1650 FWL 2310 FSL
30025229090000	FAE II Operating LLC	E C HILL A #4	7069	OIL	[33600] IMPERIAL-TUBB-DRINKKARD; [58300] TEAGUE;PADDOCK-BLINEBERRY	939.87	1/17/1969	4/1/1969	235	37E	27	2310 FWL 2310 FSL
30025350580000	ARCH PETROLEUM INCORPORATED	LAMUNYON C E 71	7417	JNK	Plugged	998.43	6/21/2000	7/18/2000	235	37E	27	1310 FWL 2310 FNL
30025342020000	FAE II Operating LLC	C E LAMUNYON 66	5940	OIL	[58300] TEAGUE;PADDOCK-BLINEBERRY	1028.86	11/15/1997	1/6/1998	235	37E	27	2520 FWL 1300 FNL
30025351060000	FAE II Operating LLC	C E LAMUNYON #71Y	9560	OIL	[58900] TEAGUE;SIMPSON	1029.99	7/19/2000	10/4/2000	235	37E	27	1280 FWL 2305 FNL
30025108580000	CHEVRON U S A INCORPORATED	C E LAMUNYON #16	10165	PLUGOIL	[33600] IMPERIAL-TUBB-DRINKKARD; [58900] TEAGUE;SIMPSON	1031.99	5/25/1951	1/15/1952	235	37E	27	1980 FWL 1980 FNL
30025108500000	FAE II Operating LLC	E C HILL B 1	9785	OIL	[33600] IMPERIAL-TUBB-DRINKKARD; [58900] TEAGUE;SIMPSON	1051.85	8/8/1950	11/10/1950	235	37E	27	1980 FWL 1980 FSL
30025334450000	FAE II Operating LLC	C E LAMUNYON 57	5940	OIL	[58300] TEAGUE;PADDOCK-BLINEBERRY	1109.73	8/25/1996	9/19/1996	235	37E	27	1200 FWL 2310 FNL
30025350600000	FAE II Operating LLC	C E LAMUNYON #74	9550	OIL	[58900] TEAGUE;SIMPSON	1282.32	10/21/2000	12/10/2000	235	37E	27	1515 FWL 1310 FNL
30025341530000	FAE II Operating LLC	C E LAMUNYON #63Y	5940	OIL	[58300] TEAGUE;PADDOCK-BLINEBERRY	1322.54	7/26/1997	9/18/1997	235	37E	27	1340 FWL 1420 FNL
30025339600000	ARCH PETROLEUM INCORPORATED	LAMUNYON C E 63	1005	JNK	Plugged	1337.41	7/19/1997	7/24/1997	235	37E	27	1340 FWL 1400 FNL
30025334480000	FAE II Operating LLC	E C HILL A #2	9780	OIL	[58300] TEAGUE;PADDOCK-BLINEBERRY	1405.65	12/21/1950	4/16/1951	235	37E	27	1980 FWL 1980 FSL
30025353650000	OXY USA INC	E C HILL B #6	5940	PLUGOIL	Plugged	1644.53	9/6/1996	9/28/1996	235	37E	27	2310 FWL 1340 FSL
30025353650000	OXY USA INC	E C HILL C #3	9580	PLUGOIL	Plugged	1669.14	8/13/2002	11/20/2002	235	37E	27	990 FWL 990 FSL
30025353650000	FAE II Operating LLC	C E LAMUNYON 48	7600	OIL	[85960] TEAGUE;ABO (GAS)	1676.99	12/20/1978	3/1/1979	235	37E	27	2310 FEL 760 FNL
30025108560000	ARCH PETROLEUM INCORPORATED	C E LAMUNYON #12	9470	PLUGOIL	Plugged	1684.96	11/6/1949	2/12/1950	235	37E	27	660 FWL 1980 FNL
30025108550000	ARCH PETROLEUM INCORPORATED	C E LAMUNYON #11	9844	PLUGOIL	Plugged	1685.79	11/6/1949	2/20/1950	235	37E	27	1980 FWL 660 FNL
30025223230000	FAE II Operating LLC	C E LAMUNYON #34	6278	OIL	[33600] IMPERIAL-TUBB-DRINKKARD; [58300] TEAGUE;PADDOCK-BLINEBERRY	1882.22	4/18/1968	5/15/1968	235	37E	27	460 FWL 1980 FNL
30025229390000	OXY USA INC	C E LAMUNYON 39	6300	PLUGOIL	Plugged	1882.28	5/20/1968	6/20/1968	235	37E	27	1980 FWL 460 FNL
30025108600000	CHEVRON U S A INCORPORATED	LAMUNYON-FED C 1	3675	PLUGOIL	Plugged	1914.29	9/28/1959	10/13/1959	235	37E	27	1980 FEL 660 FNL
30025334490000	FAE II Operating LLC	E C HILL A #5	5940	OIL	[58300] TEAGUE;PADDOCK-BLINEBERRY	1919.02	9/19/1996	10/18/1996	235	37E	27	1980 FEL 1340 FSL
30025108530000	ARCH PETROLEUM INC	E C HILL B #4	9743	PLUGOIL	Plugged	1993.8	11/6/1952	2/1/1953	235	37E	27	2310 FWL 990 FSL
30025350130000	OXY USA INC	E C HILL B #7	9530	PLUGOIL	Plugged	1993.8	4/9/2001	6/4/2001	235	37E	27	2290 FWL 990 FSL
30025226000000	OXY USA INC	E C HILL C #2	5994	PLUGOIL	Plugged	2084.42	5/17/1968	6/13/1968	235	37E	27	330 FWL 2310 FSL
30025223730000	OXY USA INC	E C HILL B #2	6355	PLUGOIL	Plugged	2093.33	11/20/1967	1/4/1968	235	37E	27	1650 FWL 990 FSL
30025379240000	FAE II Operating LLC	E C HILL A #1	6000	SWD	[96121] SWD;SAN ANDRES	2101.21	12/20/1967	12/2/1968	235	37E	27	2310 FEL 990 FSL
30025379240000	FAE II Operating LLC	C E LAMUNYON #90	3750	OIL	[37240] LANGGIE MATTIK;7 RVRB-Q-GRAVBURG; [58300] TEAGUE;PADDOCK-BLINEBERRY	2155.54	3/20/2007	4/21/2007	235	37E	27	660 FWL 940 FNL
30025362400000	FAE II Operating LLC	E C HILL C #4	5500	OIL	[58300] TEAGUE;PADDOCK-BLINEBERRY	2160.28	4/10/2003	5/8/2003	235	37E	27	990 FWL 1260 FSL
30025259190000	FAE II Operating LLC	C E LAMUNYON #45	7600	OIL	[33600] IMPERIAL-TUBB-DRINKKARD; [58300] TEAGUE;PADDOCK-BLINEBERRY; [58360] TEAGUE;DEVONIAN, NORTH	2248.21	6/30/1978	9/5/1978	235	37E	27	990 FWL 500 FNL
30025356240000	FAE II Operating LLC	C E LAMUNYON #80	9600	OIL	[58900] TEAGUE;SIMPSON	2314.7	4/11/2003	6/17/2003	235	37E	27	150 FWL 1500 FNL
30025108590000	GULF OIL CORPORATION	C E LAMUNYON #19	3580	PLUGOIL	Plugged	2321.44	2/9/1955	3/1/1955	235	37E	27	660 FEL 1980 FNL
30025108540000	FAE II Operating LLC	C E LAMUNYON 9	9852	OIL	[85960] TEAGUE;ABO (GAS); [96133] SWD;SIMPSON	2344.65	5/18/1949	10/21/1949	235	37E	27	660 FWL 660 FNL
30025339620000	FAE II Operating LLC	C E LAMUNYON 65	5940	OIL	[58300] TEAGUE;PADDOCK-BLINEBERRY	2435.8	8/16/1997	10/17/1997	235	37E	28	125 FEL 2310 FNL
30025350610000	FAE II Operating LLC	C E LAMUNYON #75	9572	OIL	[58900] TEAGUE;SIMPSON	2463.91	2/1/2001	3/25/2001	235	37E	22	1505 FWL 10 FSL
30025339610000	FAE II Operating LLC	C E LAMUNYON #64	5950	OIL	[58300] TEAGUE;PADDOCK-BLINEBERRY	2469.37	9/6/1997	10/7/1997	235	37E	27	1340 FWL 50 FNL
30025241510000	FAE II Operating LLC	C E LAMUNYON #24	5935	OIL	[37240] LANGGIE MATTIK;7 RVRB-Q-GRAVBURG; [58300] TEAGUE;PADDOCK-BLINEBERRY	2524	1/24/1968	2/19/1968	235	37E	27	510 FWL 560 FNL
30025108520000	FAE II Operating LLC	E C HILL A 3	9737	OIL	[33600] IMPERIAL-TUBB-DRINKKARD; [58300] TEAGUE;PADDOCK-BLINEBERRY	2527.49	5/28/1952	8/30/1952	235	37E	27	1980 FEL 660 FSL
30025108610000	GULF OIL CORPORATION	LAMUNYON C FEDERAL 2	3678	PLUGOIL	Plugged	2563.07	10/11/1959	11/18/1959	235	37E	27	990 FEL 660 FNL

Exhibit B5

C E LAMUNYON #76

API: 30-025-35074

C E LAMUNYON #71Y

API: 30-025-35106

Exhibit B6

1/2 Mile Radius	UWI/API	OPERATOR	WELL LABEL	ID	WELL TYPE	CURRENT ZONE	Distance from CE LAMUNYON #71Y (feet)	SPUD DATE	COMP DATE	TOWNSHIP	RANGE	SECTION	FOOTAGE
	30025351060000	FAE II Operating LLC	CE LAMUNYON #71Y	5960	OIL	[58900] TEAGUE;SIMPSON	0	7/19/2000	10/4/2000	23S	37E	27	1280 FWL 2310 FNL
	30025350800000	ARCH PETROLEUM INCORPORATED	LAMUNYON C E 71	7417	JNK	Plugged	31.76	6/21/2000	7/18/2000	23S	37E	27	1310 FWL 2310 FNL
	30025344500000	FAE II Operating LLC	CE LAMUNYON 57	5940	OIL	[58900] TEAGUE;PADDOCK-BLINEBRY	80.45	8/25/1996	9/19/1996	23S	37E	27	1200 FWL 2310 FNL
	30025242800000	FAE II Operating LLC	CE LAMUNYON 26	5925	OIL	[58900] TEAGUE;PADDOCK-BLINEBRY	591.76	2/19/1968	3/16/1968	23S	37E	27	1780 FWL 1980 FNL
	30025108560000	ARCH PETROLEUM INCORPORATED	CE LAMUNYON #12	9470	PLUGGOL	Plugged	702.31	11/6/1949	2/12/1950	23S	37E	27	660 FWL 1980 FNL
	30025108570000	CHEVRON U S A INCORPORATED	CE LAMUNYON 13	9850	PLUGGOL	Plugged	768.46	2/23/1950	5/30/1950	23S	37E	27	1980 FWL 1980 FNL
	30025237200000	FAE II Operating LLC	E C HILL B #3	6007	OIL	[37240] LANGLE MATTIK;7 RVNS-Q-GRAYBURG ; [58900] TEAGUE;PADDOCK-BLINEBRY	776.39	12/5/1967	1/2/1968	23S	37E	27	1650 FWL 2310 FSL
	30025252300000	FAE II Operating LLC	CE LAMUNYON #34	6278	OIL	[33600] IMPERIAL;TUBB-DRINKKARD ; [58900] TEAGUE;PADDOCK-BLINEBRY	885.03	4/18/1968	5/15/1968	23S	37E	27	460 FWL 1980 FNL
	30025341300000	FAE II Operating LLC	CE LAMUNYON #63Y	5940	OIL	[58900] TEAGUE;PADDOCK-BLINEBRY	885.85	7/56/1997	9/18/1997	23S	37E	27	1340 FWL 1420 FNL
	30025339600000	ARCH PETROLEUM INCORPORATED	LAMUNYON C E 63	1005	JNK	Plugged	907.64	7/19/1997	7/14/1997	23S	37E	27	1340 FWL 1400 FNL
	30025350600000	FAE II Operating LLC	CE LAMUNYON #74	9550	OIL	[58900] TEAGUE;SIMPSON	1019.95	10/21/2000	12/10/2000	23S	37E	27	1515 FWL 1310 FNL
	30025350740000	FAE II Operating LLC	CE LAMUNYON #76	9800	OIL	[58900] TEAGUE;SIMPSON	1029.39	9/17/2000	11/20/2000	23S	37E	27	2310 FWL 2310 FNL
	30025359400000	OXY USA INC	E C HILL C #3	9580	PLUGGOL	Plugged	1078.71	8/13/2002	11/20/2002	23S	37E	27	990 FWL 1950 FSL
	30025256000000	OXY USA INC	E C HILL C #2	5994	PLUGGOL	Plugged	1163.03	5/17/1968	6/13/1968	23S	37E	27	330 FWL 2310 FSL
	30025108500000	FAE II Operating LLC	E C HILL B 1	9785	OIL	[33600] IMPERIAL;TUBB-DRINKKARD ; [58900] TEAGUE;SIMPSON	1232.77	8/8/1950	11/10/1950	23S	37E	27	1980 FWL 1980 FSL
	30025336640000	FAE II Operating LLC	CE LAMUNYON #80	9600	OIL	[58900] TEAGUE;SIMPSON	1394.69	4/11/2003	6/17/2003	23S	37E	27	150 FWL 1500 FNL
	300253399620000	FAE II Operating LLC	CE LAMUNYON 65	5940	OIL	[58900] TEAGUE;PADDOCK-BLINEBRY	1406.44	8/16/1997	10/17/1997	23S	37E	28	125 FEL 2310 FNL
	30025379240000	FAE II Operating LLC	CE LAMUNYON #90	3750	OIL	[37240] LANGLE MATTIK;7 RVNS-Q-GRAYBURG ; [58900] TEAGUE;PADDOCK-BLINEBRY	1505.03	3/20/2007	4/21/2007	23S	37E	27	660 FWL 940 FNL
	30025340200000	FAE II Operating LLC	CE LAMUNYON 66	5940	OIL	[58900] TEAGUE;PADDOCK-BLINEBRY	1588.24	11/15/1997	1/6/1998	23S	37E	27	2520 FWL 1300 FNL
	30025362400000	FAE II Operating LLC	E C HILL C #4	5500	OIL	[37240] LANGLE MATTIK;7 RVNS-Q-GRAYBURG ; [58900] TEAGUE;PADDOCK-BLINEBRY	1750.92	4/10/2003	5/8/2003	23S	37E	27	990 FWL 1260 FSL
	30025108540000	FAE II Operating LLC	CE LAMUNYON 9	9852	OIL	[58960] TEAGUE;ABO (GAS) ; [96133] SWD;SIMPSON	1763.54	5/18/1949	10/21/1949	23S	37E	27	660 FWL 660 FNL
	30025108550000	ARCH PETROLEUM INCORPORATED	CE LAMUNYON #11	9844	PLUGGOL	Plugged	1780.96	11/6/1949	2/20/1950	23S	37E	27	1980 FWL 660 FNL
	30025305250000	FAE II Operating LLC	CE LAMUNYON 50	5960	OIL	[58900] IMPERIAL;TUBB-DRINKKARD ; [58900] TEAGUE;PADDOCK-BLINEBRY	1797.23	2/16/1989	7/6/1989	23S	37E	28	210 FEL 1310 FNL
	30025229090000	FAE II Operating LLC	E C HILL A #4	7069	OIL	[33600] IMPERIAL;TUBB-DRINKKARD ; [58900] TEAGUE;PADDOCK-BLINEBRY ; [58960] TEAGUE;DENONIAN, NORTH TEAGUE;DENONIAN, NORTH	1816.73	1/17/1969	4/1/1969	23S	37E	27	2310 FEL 2310 FSL
	30025259190000	FAE II Operating LLC	CE LAMUNYON #45	7600	OIL	[37240] LANGLE MATTIK;7 RVNS-Q-GRAYBURG ; [58900] TEAGUE;PADDOCK-BLINEBRY	1828.82	6/30/1978	9/5/1978	23S	37E	27	990 FWL 500 FNL
	30025224150000	FAE II Operating LLC	CE LAMUNYON #24	5935	OIL	[37240] LANGLE MATTIK;7 RVNS-Q-GRAYBURG ; [58900] TEAGUE;PADDOCK-BLINEBRY	1915.54	1/24/1968	2/19/1968	23S	37E	27	510 FWL 560 FNL
	30025334480000	OXY USA INC	E C HILL B #6	5940	PLUGGOL	Plugged	1954.27	9/6/1996	9/28/1996	23S	37E	27	2310 FWL 1340 FSL
	30025225930000	OXY USA INC	CE LAMUNYON 39	6300	PLUGGOL	Plugged	1966.87	5/20/1968	6/20/1968	23S	37E	27	1980 FWL 460 FNL
	30025224470000	FAE II Operating LLC	CE LAMUNYON 29	5900	OIL	[37240] LANGLE MATTIK;7 RVNS-Q-GRAYBURG ; [58900] TEAGUE;SIMPSON	1968.62	2/26/1968	3/16/1968	23S	37E	28	660 FEL 1980 FNL
	30025108580000	CHEVRON U S A INCORPORATED	CE LAMUNYON #16	10165	PLUGGOL	Plugged	2033.42	5/25/1951	1/15/1952	23S	37E	27	1980 FEL 1980 FNL
	30025239700000	OXY USA INC	E C HILL B #2	6355	PLUGGOL	Plugged	2036.85	11/20/1967	1/4/1968	23S	37E	27	1650 FWL 990 FSL
	30025225000000	OXY USA INC	M K STEWART 4	6277	PLUGGOL	Plugged	2180.08	4/2/1968	4/26/1968	23S	37E	28	660 FEL 1980 FSL
	30025350130000	OXY USA INC	E C HILL B #7	9530	PLUGGOL	Plugged	2249.3	4/9/2001	6/4/2001	23S	37E	27	2290 FWL 990 FSL
	30025108510000	FAE II Operating LLC	E C HILL A #2	9780	OIL	[58900] TEAGUE;PADDOCK-BLINEBRY	2252.74	12/21/1950	4/16/1951	23S	37E	27	1980 FEL 1980 FSL
	30025339610000	FAE II Operating LLC	CE LAMUNYON #64	5950	OIL	[58900] TEAGUE;PADDOCK-BLINEBRY	2256.27	9/6/1997	10/7/1997	23S	37E	27	1340 FWL 50 FNL
	30025108530000	ARCH PETROLEUM INC	E C HILL B #4	9743	PLUGGOL	Plugged	2257.78	11/6/1952	2/1/1953	23S	37E	27	2310 FWL 990 FSL
	30025261760000	FAE II Operating LLC	CE LAMUNYON 48	7600	OIL	[58960] TEAGUE;ABO (GAS)	2274.73	12/10/1978	3/1/1979	23S	37E	27	2310 FWL 760 FNL
	30025334470000	OXY USA INC	M K STEWART 8	5977	PLUGGOL	Plugged	2295.28	12/20/1978	7/21/1996	23S	37E	28	330 FEL 1340 FSL
	30025350610000	FAE II Operating LLC	CE LAMUNYON #75	9550	OIL	[58900] TEAGUE;SIMPSON	2323.75	2/1/2001	3/25/2001	23S	37E	22	1500 FWL 10 FSL
	30025359320000	FAE II Operating LLC	CE LAMUNYON #81	9550	OIL	[58900] TEAGUE;SIMPSON	2373.15	3/4/2003	5/11/2003	23S	37E	27	150 FWL 230 FNL
	30025225470000	GFUE OIL CORP	CE LAMUNYON 6	10218	PLUGGIN	Plugged	2402.82	10/4/1947	3/24/1948	23S	37E	28	554 FEL 766 FNL
	30025108630000	FAE II Operating LLC	E C HILL C #1	6400	OIL	[58900] TEAGUE;PADDOCK-BLINEBRY	2406.81	4/28/1968	6/2/1968	23S	37E	27	660 FWL 660 FSL
	30025342540000	FAE II Operating LLC	CE LAMUNYON #68	5950	OIL	[58900] TEAGUE;PADDOCK-BLINEBRY	2463.17	12/13/1933	1/21/1936	23S	37E	28	330 FWL 10 FNL
	30025108640000	GYPSY OIL COMPANY	LAMUNYON 1	539	PLUGGOL	Plugged	2551.17	9/28/1959	10/13/1959	23S	37E	27	660 FEL 660 FNL
	30025334490000	CHEVRON U S A INCORPORATED	LAMUNYON-FED C 1	3675	PLUGGOL	Plugged	2589.47	9/19/1996	10/18/1996	23S	37E	27	1980 FEL 1340 FSL
	30025223730000	FAE II Operating LLC	E C HILL A #5	5940	OIL	[58900] TEAGUE;PADDOCK-BLINEBRY	2619.39	12/20/1967	12/2/1968	23S	37E	27	2310 FEL 990 FSL
	30025334440000	OXY USA INC	CE LAMUNYON 58	5979	PLUGGOL	Plugged	2621.24	7/17/1996	9/9/1996	23S	37E	28	1340 FEL 2310 FNL

1/2 Mile Radius

UWI/API	OPERATOR	WELL LABEL	ID	WELL TYPE	CURRENT ZONE	Distance from C E LAMUNYON #80 (feet)	SPUD DATE	COMP DATE	TOWNSHIP	RANGE	SECTION	FOOTAGE
30025356240000	FAE II Operating LLC	C E LAMUNYON #80	9600	OIL	[58900] TEAGUE/SIMPSON	0	4/11/2003	6/17/2003	235	37E	27	150 FWL 1500 FNL
300253052520000	FAE II Operating LLC	C E LAMUNYON 50	5960	OIL	[58900] TEAGUE/PADDOCK-BLINEBERRY	405.41	2/16/1989	7/6/1989	235	37E	28	210 FEL 1310 FNL
30025252300000	FAE II Operating LLC	C E LAMUNYON #84	6278	OIL	[33600] IMPERIAL-TUBB-DRINKARD ; [58900] TEAGUE/PADDOCK-BLINEBERRY	575.86	4/18/1968	5/15/1968	235	37E	27	460 FWL 1980 FNL
30025108560000	ARCH PETROLEUM INCORPORATED	C E LAMUNYON #12	9470	PLUGOIL	Plugged	705.29	11/6/1949	2/12/1950	235	37E	27	660 FWL 1980 FNL
30025379240000	FAE II Operating LLC	C E LAMUNYON #90	3750	OIL	[37240] LANGUE MATTX;7 RVS-Q-GRAYBURG	752.88	3/20/2007	4/21/2007	235	37E	27	660 FWL 940 FNL
3002539620000	FAE II Operating LLC	C E LAMUNYON 65	5940	OIL	[58900] TEAGUE/PADDOCK-BLINEBERRY	855.72	8/16/1997	10/17/1997	235	37E	28	125 FEL 2310 FNL
3002524470000	FAE II Operating LLC	C E LAMUNYON 29	5900	OIL	[37240] LANGUE MATTX;7 RVS-Q-GRAYBURG	940.75	2/26/1968	3/16/1968	235	37E	28	660 FWL 1980 FNL
30025108540000	FAE II Operating LLC	C E LAMUNYON 9	9852	OIL	[58960] TEAGUE/ABO (GAS) ; [96133] SMD/SIMPSON	978.37	5/18/1949	10/21/1949	235	37E	27	660 FWL 660 FNL
30025224150000	FAE II Operating LLC	C E LAMUNYON #24	5935	OIL	[37240] LANGUE MATTX;7 RVS-Q-GRAYBURG ; [58900] TEAGUE/PADDOCK-BLINEBERRY	1003.72	1/24/1968	2/19/1968	235	37E	27	510 FWL 560 FNL
30025108630000	GULF OIL CORP	C E LAMUNYON 6	10218	PLUGOIL	Plugged	1017.75	10/4/1947	3/24/1948	235	37E	28	554 FEL 766 FNL
30025108640000	GYPSY OIL COMPANY	LAMUNYON 1	539	PLUGOIL	Plugged	1166.66	12/13/1933	1/21/1936	235	37E	28	660 FEL 660 FNL
30025341530000	FAE II Operating LLC	C E LAMUNYON #63Y	5940	OIL	[58900] TEAGUE/PADDOCK-BLINEBERRY	1192.26	7/26/1997	9/18/1997	235	37E	27	1340 FWL 1420 FNL
3002539600000	ARCH PETROLEUM INCORPORATED	LAMUNYON C E 63	1005	JNK	Plugged	1193.79	7/19/1997	7/24/1997	235	37E	27	1340 FWL 1400 FNL
30025359320000	FAE II Operating LLC	C E LAMUNYON #81	9550	OIL	[58900] TEAGUE/SIMPSON	1269.77	3/4/2003	5/11/2003	235	37E	27	150 FWL 230 FNL
30025223230000	FAE II Operating LLC	C E LAMUNYON 21	6300	OIL	[58900] TEAGUE/PADDOCK-BLINEBERRY ; [97267] WILDCAT G-01 S233728A;SAN ANDRES	1280.69	12/4/1967	1/12/1968	235	37E	28	660 FEL 510 FNL
30025259190000	FAE II Operating LLC	C E LAMUNYON #45	7600	OIL	[33600] IMPERIAL-TUBB-DRINKARD ; [58900] TEAGUE/PADDOCK-BLINEBERRY ; [58960] TEAGUE/DEVONIAN, NORTH	1299.31	6/30/1978	9/5/1978	235	37E	27	990 FWL 500 FNL
30025334450000	FAE II Operating LLC	C E LAMUNYON 57	5940	OIL	[58900] TEAGUE/PADDOCK-BLINEBERRY	1332.37	8/25/1996	9/19/1996	235	37E	27	1200 FWL 2310 FNL
3002535060000	FAE II Operating LLC	C E LAMUNYON #74	9550	OIL	[58900] TEAGUE/SIMPSON	1378.28	10/21/2000	12/10/2000	235	37E	27	1515 FWL 1310 FNL
30025351060000	FAE II Operating LLC	C E LAMUNYON #71Y	9560	OIL	[58900] TEAGUE/SIMPSON	1394.69	7/19/2000	10/4/2000	235	37E	27	1280 FWL 2305 FNL
30025350580000	ARCH PETROLEUM INCORPORATED	LAMUNYON C E 71	7417	JNK	Plugged	1424.12	6/21/2000	7/18/2000	235	37E	27	1310 FWL 2310 FNL
30025342540000	FAE II Operating LLC	C E LAMUNYON #68	5950	OIL	[58900] TEAGUE/PADDOCK-BLINEBERRY	1498.09	12/17/1997	4/15/1998	235	37E	27	330 FWL 10 FNL
3002522560000	OXY USA INC	E C HILL C #2	6994	PLUGOIL	Plugged	1499.95	5/17/1968	6/13/1968	235	37E	27	390 FWL 2310 FSL
30025332540000	FAE II Operating LLC	C E LAMUNYON 56	6000	OIL	[58900] TEAGUE/PADDOCK-BLINEBERRY	1613.15	2/17/1996	3/6/1996	235	37E	28	1450 FEL 1300 FNL
30025362770000	OXY USA INC	C E LAMUNYON 84	5700	PLUGOIL	Plugged	1628.46	7/17/1996	9/9/1996	235	37E	28	1169 FEL 545 FNL
30025334440000	OXY USA INC	C E LAMUNYON 58	5979	PLUGOIL	Plugged	1695.5	2/17/1996	6/16/2003	235	37E	28	1460 FEL 2310 FNL
30025339610000	FAE II Operating LLC	C E LAMUNYON 26	5925	OIL	[58900] TEAGUE/PADDOCK-BLINEBERRY	1867.55	9/16/1968	3/16/1968	235	37E	27	1780 FWL 1980 FNL
30025108570000	CHEVRON U S A INCORPORATED	C E LAMUNYON #64	5950	OIL	[58900] TEAGUE/PADDOCK-BLINEBERRY	1874.37	2/1/2001	3/25/2001	235	37E	27	1340 FWL 50 FNL
30025224280000	OXY USA INC	C E LAMUNYON 13	9850	PLUGOIL	Plugged	1897.65	9/16/1997	10/7/1997	235	37E	27	1980 FWL 1980 FNL
3002521500000	OXY USA INC	M K STEWART 4	6277	PLUGOIL	Plugged	1984.18	2/23/1950	5/30/1950	235	37E	27	660 FEL 1980 FSL
3002539610000	ARCH PETROLEUM INCORPORATED	C E LAMUNYON #11	9944	PLUGOIL	Plugged	2006.29	11/6/1949	2/20/1950	235	37E	27	1980 FWL 660 FNL
30025350610000	FAE II Operating LLC	C E LAMUNYON #75	9572	OIL	[58900] TEAGUE/SIMPSON	2018.41	2/1/2001	3/25/2001	235	37E	22	1505 FWL 10 FSL
30025333650000	OXY USA INC	E C HILL C #3	9580	PLUGOIL	Plugged	2037.66	8/13/2002	11/20/2002	235	37E	27	990 FWL 1950 FSL
30025225930000	OXY USA INC	C E LAMUNYON 59	6300	PLUGOIL	Plugged	2096.95	5/20/1968	6/20/1968	235	37E	27	1980 FWL 460 FNL
30025223720000	FAE II Operating LLC	E C HILL B #3	6007	OIL	[37240] LANGUE MATTX;7 RVS-Q-GRAYBURG ; [58900] TEAGUE/PADDOCK-BLINEBERRY	2121.45	12/5/1967	1/2/1968	235	37E	27	1650 FWL 2310 FSL
30025224990000	FAE II Operating LLC	C E LAMUNYON 33	6300	OIL	[58900] TEAGUE/PADDOCK-BLINEBERRY	2181.8	4/2/1968	4/24/1968	235	37E	28	1980 FEL 1980 FNL
300252232340000	FAE II Operating LLC	C E LAMUNYON 20	6400	OIL	[58900] TEAGUE/PADDOCK-BLINEBERRY	2186.08	11/7/1967	1/15/1968	235	37E	22	510 FWL 660 FSL
30025108280000	FAE II Operating LLC	C E LAMUNYON 7	9460	OIL	[58960] TEAGUE/DEVONIAN, NORTH ; [96599] TEAGUE/ABO, MID	2215.54	10/15/1948	1/15/1949	235	37E	22	660 FWL 660 FSL
30025224020000	FAE II Operating LLC	C E LAMUNYON 23	5950	GAS	[37240] LANGUE MATTX;7 RVS-Q-GRAYBURG ; [58900] TEAGUE/PADDOCK-BLINEBERRY ; [79240] JALMAT;TAN-YATES-7 RVS (GAS)	2289.73	1/8/1968	2/4/1968	235	37E	28	1980 FEL 660 FNL
30025108190000	FAE II Operating LLC	SALTMOUNT 1	9600	OIL	[58900] TEAGUE/PADDOCK-BLINEBERRY	2307.75	3/31/1948	7/18/1948	235	37E	21	660 FEL 660 FSL
30025350740000	FAE II Operating LLC	C E LAMUNYON #76	9800	OIL	[58900] TEAGUE/SIMPSON	2314.7	9/17/2000	11/20/2000	235	37E	27	2310 FWL 2310 FNL
30025342020000	FAE II Operating LLC	C E LAMUNYON 66	5940	OIL	[58900] TEAGUE/PADDOCK-BLINEBERRY	2378.05	11/15/1997	1/6/1998	235	37E	27	2550 FWL 1300 FNL
30025334470000	OXY USA INC	M K STEWART 8	5977	PLUGOIL	Plugged	2499.8	6/21/1996	7/21/1996	235	37E	28	330 FEL 1340 FSL
30025269450000	V-F PETROLEUM INCORPORATED	SALTMOUNT 1	7384	DRY	Plugged	2556.05	7/27/1980	8/21/1980	235	37E	21	330 FEL 990 FSL
30025108500000	FAE II Operating LLC	E C HILL B 1	9785	OIL	[33600] IMPERIAL-TUBB-DRINKARD ; [58900] TEAGUE/SIMPSON	2589.44	8/8/1950	11/10/1950	235	37E	27	1980 FWL 1980 FSL
30025371600000	FAE II Operating LLC	SALTMOUNT 5	3735	OIL	[37240] LANGUE MATTX;7 RVS-Q-GRAYBURG	2619.91	3/10/2007	4/30/2007	235	37E	21	660 FEL 990 FSL

Exhibit B7

C E LAMUNYON #80

API: 30-025-35624

C E LAMUNYON #81

API: 30-025-35932

UWI/API	OPERATOR	WELL LABEL	ID	WELL TYPE	CURRENT ZONE	Distance from CE LAMUNYON #81 (feet)	SPUD DATE	COMP DATE	TOWNSHIP	RANGE	SECTION	FOOTAGE
3002535920000	FAE II Operating LLC	CE LAMUNYON #81	9550	OIL	[58900] TEAGUE;SIMPSON	0	3/4/2003	5/11/2003	235	37E	27	150 FWL 230 FNL
30025342540000	FAE II Operating LLC	CE LAMUNYON #68	5950	OIL	[58300] TEAGUE;PADDOCK-BLINEBERRY	282.47	12/17/1997	4/15/1998	235	37E	27	330 FWL 10 FNL
30025108540000	FAE II Operating LLC	CE LAMUNYON 9	9852	OIL	[85960] TEAGUE;ABO (GAS) ; [96133] SWD;SIMPSON	671.35	5/18/1949	10/21/1949	235	37E	27	660 FWL 660 FNL
30025223230000	FAE II Operating LLC	CE LAMUNYON 21	6300	OIL	[58300] TEAGUE;PADDOCK-BLINEBERRY ; [97267] WILDCAT-G-01-S232728A;SAN ANDRES	853.98	12/4/1967	1/12/1968	235	37E	28	660 FEL 510 FNL
30025379240000	FAE II Operating LLC	CE LAMUNYON #90	3750	OIL	[37240] LANGUE MATTIK;7 RVR-S-Q-GRAYBURG	878.51	3/20/2007	4/21/2007	235	37E	27	660 FWL 940 FNL
30025108630000	GULF OIL CORP	CE LAMUNYON 6	10218	PLUGG	[33600] IMPERIAL-TUBB-DRINKARD ; [58300] TEAGUE;PADDOCK-BLINEBERRY ; [58360] TEAGUE;DEVONIAN, NORTH	894.44	10/4/1947	3/24/1948	235	37E	28	554 FEL 766 FNL
30025259190000	FAE II Operating LLC	CE LAMUNYON #45	7600	OIL	[33600] IMPERIAL-TUBB-DRINKARD ; [58300] TEAGUE;PADDOCK-BLINEBERRY ; [58360] TEAGUE;DEVONIAN, NORTH	887.97	6/30/1978	9/9/1978	235	37E	27	990 FWL 500 FNL
30025108640000	GPVSY OIL COMPANY	LAMUNYON 1	539	PLUGG	Plugged	915.57	12/13/1933	1/21/1936	235	37E	28	660 FEL 660 FNL
30025222240000	FAE II Operating LLC	CE LAMUNYON 20	6400	OIL	[58300] TEAGUE;PADDOCK-BLINEBERRY	957.41	11/7/1967	1/15/1968	235	37E	22	510 FWL 660 FSL
30025108280000	FAE II Operating LLC	CE LAMUNYON 7	9460	OIL	[58360] TEAGUE;DEVONIAN, NORTH ; [96599] TEAGUE;ABO, MND	1023.8	10/15/1948	1/15/1949	235	37E	22	660 FWL 660 FSL
30025305250000	FAE II Operating LLC	CE LAMUNYON 50	5960	OIL	[58300] TEAGUE;PADDOCK-BLINEBERRY	1136.57	2/16/1989	7/6/1989	235	37E	28	210 FEL 1310 FNL
30025339610000	FAE II Operating LLC	CE LAMUNYON #64	5950	OIL	[58300] TEAGUE;PADDOCK-BLINEBERRY	1202.74	9/6/1997	10/7/1997	235	37E	27	1340 FWL 50 FNL
30025108190000	FAE II Operating LLC	SALTMOUNT 1	9600	OIL	[58300] TEAGUE;PADDOCK-BLINEBERRY	1203.69	3/31/1948	7/18/1948	235	37E	21	660 FEL 660 FSL
30025356240000	FAE II Operating LLC	CE LAMUNYON #80	9600	OIL	[58900] TEAGUE;SIMPSON	1269.77	4/11/2003	6/17/2003	235	37E	21	150 FWL 1500 FNL
30025269450000	V-F PETROLEUM INCORPORATED	SALTMOUNT 1	7384	DRY	Plugged	1310.73	7/27/1980	8/21/1980	235	37E	21	330 FEL 990 FSL
3002536770000	OXY USA INC	CE LAMUNYON #4	5700	PLUGG	Plugged	1355.09	5/1/2003	6/16/2003	235	37E	28	1169 FEL 545 FNL
30025350610000	FAE II Operating LLC	CE LAMUNYON #75	9572	OIL	[58900] TEAGUE;SIMPSON	1373.69	2/1/2001	3/25/2001	235	37E	21	1505 FWL 10 FSL
30025371600000	FAE II Operating LLC	SALTMOUNT 5	3735	OIL	[58900] TEAGUE;SIMPSON	1465.03	3/10/2007	4/30/2007	235	37E	22	660 FEL 990 FSL
30025393600000	FAE II Operating LLC	CE LAMUNYON 53	6000	OIL	[37240] LANGUE MATTIK;7 RVR-S-Q-GRAYBURG	1538.2	10/23/1995	11/16/1995	235	37E	22	330 FWL 1300 FSL
30025313100000	ARCH PETROLEUM INCORPORATED	LAMUNYON C E 63	1005	JNK	Plugged	1676.87	7/19/1997	7/24/1997	235	37E	27	1340 FWL 1400 FNL
30025341530000	FAE II Operating LLC	CE LAMUNYON #3Y	5940	OIL	[58300] TEAGUE;PADDOCK-BLINEBERRY	1692.24	7/26/1997	9/18/1997	235	37E	27	1340 FWL 1420 FNL
30025350590000	FAE II Operating LLC	CE LAMUNYON #73	9683	OIL	[58900] TEAGUE;SIMPSON	1748	5/29/2001	9/9/2001	235	37E	22	330 FWL 1510 FNL
30025350600000	FAE II Operating LLC	CE LAMUNYON #74	9550	OIL	[58900] TEAGUE;SIMPSON	1751.24	10/21/2000	12/10/2000	235	37E	27	1515 FWL 1310 FNL
3002529230000	FAE II Operating LLC	CE LAMUNYON #34	6278	OIL	[33600] IMPERIAL-TUBB-DRINKARD ; [58300] TEAGUE;PADDOCK-BLINEBERRY	1782.31	4/18/1968	5/15/1968	235	37E	27	460 FWL 1980 FNL
30025108560000	ARCH PETROLEUM INCORPORATED	CE LAMUNYON #12	9470	PLUGG	Plugged	1828.92	11/6/1949	2/12/1950	235	37E	27	660 FWL 1980 FNL
30025229930000	OXY USA INC	CE LAMUNYON 29	6300	PLUGG	Plugged	1846.57	5/20/1968	6/20/1968	235	37E	27	1980 FWL 460 FNL
30025224600000	FAE II Operating LLC	CE LAMUNYON 28	5900	OIL	[58300] TEAGUE;PADDOCK-BLINEBERRY	1851.61	2/28/1968	3/25/1968	235	37E	22	1780 FWL 660 FSL
30025108550000	ARCH PETROLEUM INCORPORATED	CE LAMUNYON #11	9844	PLUGG	Plugged	1885.04	11/6/1949	2/20/1950	235	37E	27	1980 FWL 660 FSL
30025332820000	FAE II Operating LLC	SALTMOUNT 3	6000	OIL	[58300] TEAGUE;PADDOCK-BLINEBERRY	1892.93	1/11/1996	2/2/1996	235	37E	21	1300 FEL 990 FSL
30025332540000	FAE II Operating LLC	CE LAMUNYON 56	6000	OIL	[58300] TEAGUE;PADDOCK-BLINEBERRY	1922.43	2/17/1996	3/6/1996	235	37E	28	1450 FEL 1300 FNL
30025244700000	FAE II Operating LLC	CE LAMUNYON 29	5900	OIL	[37240] LANGUE MATTIK;7 RVR-S-Q-GRAYBURG	1927.74	2/26/1968	3/16/1968	235	37E	28	1450 FEL 1300 FNL
30025394240000	FAE II Operating LLC	CE LAMUNYON 60	5940	OIL	[58300] TEAGUE;PADDOCK-BLINEBERRY	1931.99	2/2/1949	5/1/1949	235	37E	22	1340 FWL 1300 FSL
30025108300000	OXY USA INC	CE LAMUNYON 8	9446	PLUGG	Plugged	2030.6	8/13/1996	9/10/1996	235	37E	22	1980 FWL 660 FSL
30025349520000	FAE II Operating LLC	CE LAMUNYON 10	9475	PLUGG	Plugged	2051.15	5/26/1949	10/27/1949	235	37E	22	990 FWL 1650 FSL
30025396200000	FAE II Operating LLC	G G TRAVIS #4	6000	OIL	[58300] TEAGUE;PADDOCK-BLINEBERRY	2087.35	3/23/2000	5/2/2000	235	37E	21	330 FEL 1800 FSL
30025339620000	FAE II Operating LLC	CE LAMUNYON 65	5940	OIL	[58300] TEAGUE;PADDOCK-BLINEBERRY	2098	8/16/1997	10/17/1997	235	37E	28	125 FEL 2310 FNL
30025350570000	FAE II Operating LLC	CE LAMUNYON #77	9600	OIL	[58900] TEAGUE;SIMPSON	2154.09	3/6/2001	5/7/2001	235	37E	22	1650 FWL 1330 FSL
30025224020000	FAE II Operating LLC	CE LAMUNYON 23	5950	GAS	[37240] LANGUE MATTIK;7 RVR-S-Q-GRAYBURG ; [58300] TEAGUE;PADDOCK-BLINEBERRY ; [79240] JALMA;TAN-VATIS-7 RVR-S (GAS)	2170.9	1/8/1968	2/4/1968	235	37E	28	1980 FEL 660 FNL
30025224150000	FAE II Operating LLC	CE LAMUNYON #24	5935	OIL	[37240] LANGUE MATTIK;7 RVR-S-Q-GRAYBURG ; [58300] TEAGUE;PADDOCK-BLINEBERRY	2170.9	1/24/1968	2/19/1968	235	37E	27	510 FWL 560 FNL
30025222240000	FAE II Operating LLC	CE LAMUNYON 25	5950	OIL	[58300] TEAGUE;PADDOCK-BLINEBERRY	2265.17	1/25/1968	2/17/1968	235	37E	22	660 FWL 1980 FSL
30025334450000	OXY USA INC	SALTMOUNT 2	6396	PLUGG	Plugged	2308.67	9/15/1967	10/20/1967	235	37E	21	1980 FEL 660 FSL
30025334450000	FAE II Operating LLC	CE LAMUNYON 57	5940	OIL	[58300] TEAGUE;PADDOCK-BLINEBERRY	2338.84	8/25/1996	9/19/1996	235	37E	27	1200 FWL 2310 FNL
30025108200000	GULF OIL CORP	G G TRAVIS 1	9662	PLUGG	Plugged	2354.35	7/1/1948	12/3/1948	235	37E	21	660 FEL 1980 FSL
30025351060000	FAE II Operating LLC	CE LAMUNYON #71Y	9560	OIL	[58900] TEAGUE;SIMPSON	2373.15	7/19/2000	10/4/2000	235	37E	27	1280 FWL 2305 FNL
30025351060000	FAE II Operating LLC	TRAVIS 5	5930	OIL	[58300] TEAGUE;PADDOCK-BLINEBERRY	2392.79	8/25/2000	10/24/2000	235	37E	21	1330 FEL 1650 FSL
30025224280000	ARCH PETROLEUM INCORPORATED	LAMUNYON C E 71	7417	JNK	Plugged	2394.51	6/21/2000	7/18/2000	235	37E	27	1780 FWL 2310 FNL
30025108570000	FAE II Operating LLC	CE LAMUNYON 26	5925	OIL	[58300] TEAGUE;PADDOCK-BLINEBERRY	2405.12	2/19/1968	3/16/1968	235	37E	27	1800 FWL 1980 FNL
30025334440000	CHEVRON U S A INCORPORATED	CE LAMUNYON 13	9850	PLUGG	Plugged	2546.23	2/23/1950	5/30/1950	235	37E	27	1980 FWL 1980 FNL
30025334440000	OXY USA INC	CE LAMUNYON 58	5979	PLUGG	Plugged	2557	7/17/1996	9/9/1996	235	37E	28	1340 FEL 2310 FNL
30025342020000	FAE II Operating LLC	CE LAMUNYON 66	5940	OIL	[58300] TEAGUE;PADDOCK-BLINEBERRY	2612.53	11/15/1997	1/6/1998	235	37E	27	2520 FWL 1300 FNL

Part VI. Continued

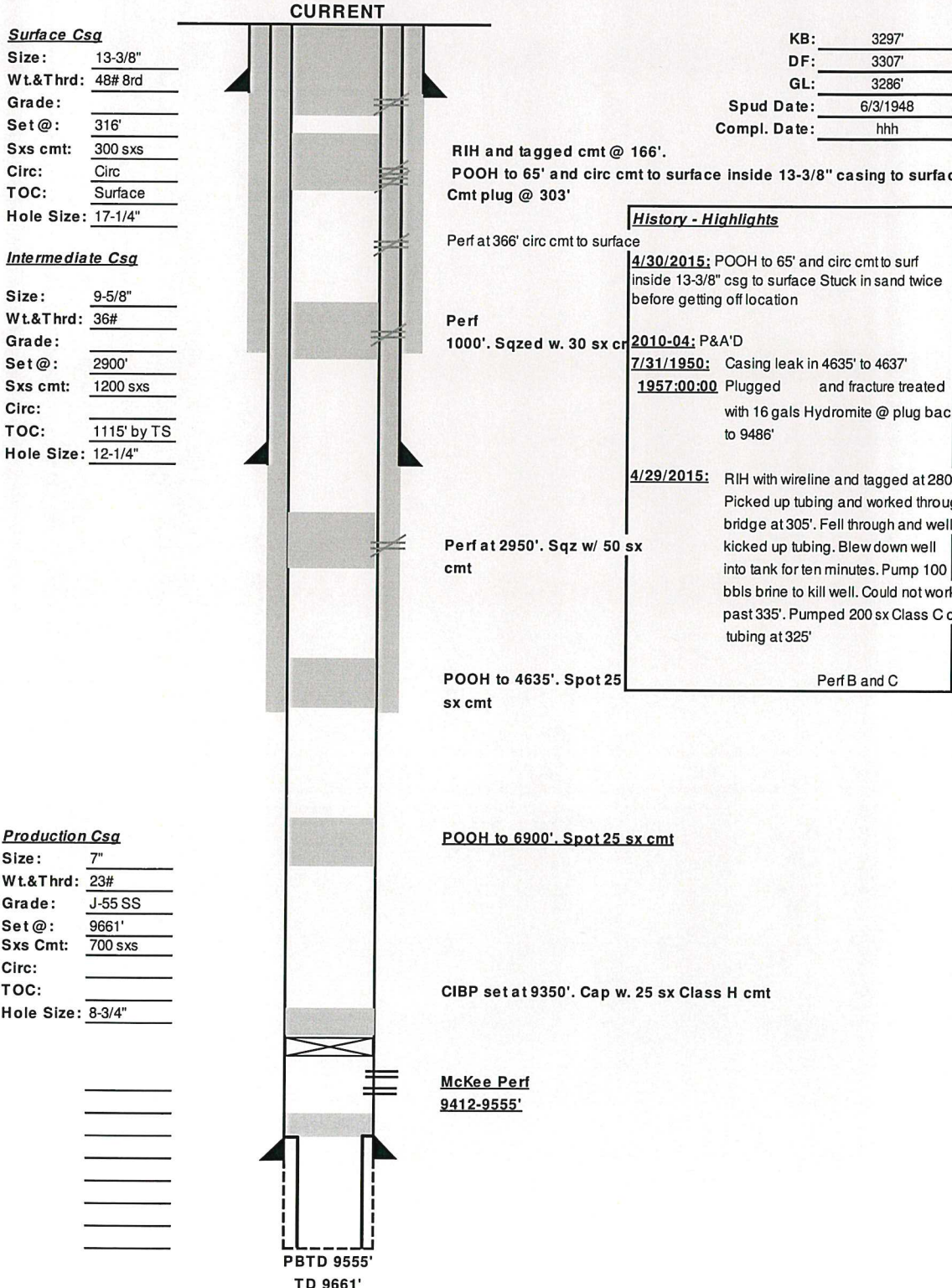
Plugged Wellbore Diagrams

G G TRAVIS 1

VI. Exhibit C1

API# 30-025-10820
 1980 FSL 660 FEL,
 Sec 21, T23S, R37E Lea Co., NM

Well Name: G G TRAVIS #001 (Pre-Ongard #001) Lease No: NML0030187 Lease Type: Private
 Township: 23S Range: 37-E Sec: 21 Location: 1980' FSL & 660' FEL
 County: Lea State: NM API: 30-025-10820 Formation: Teague, Abo,

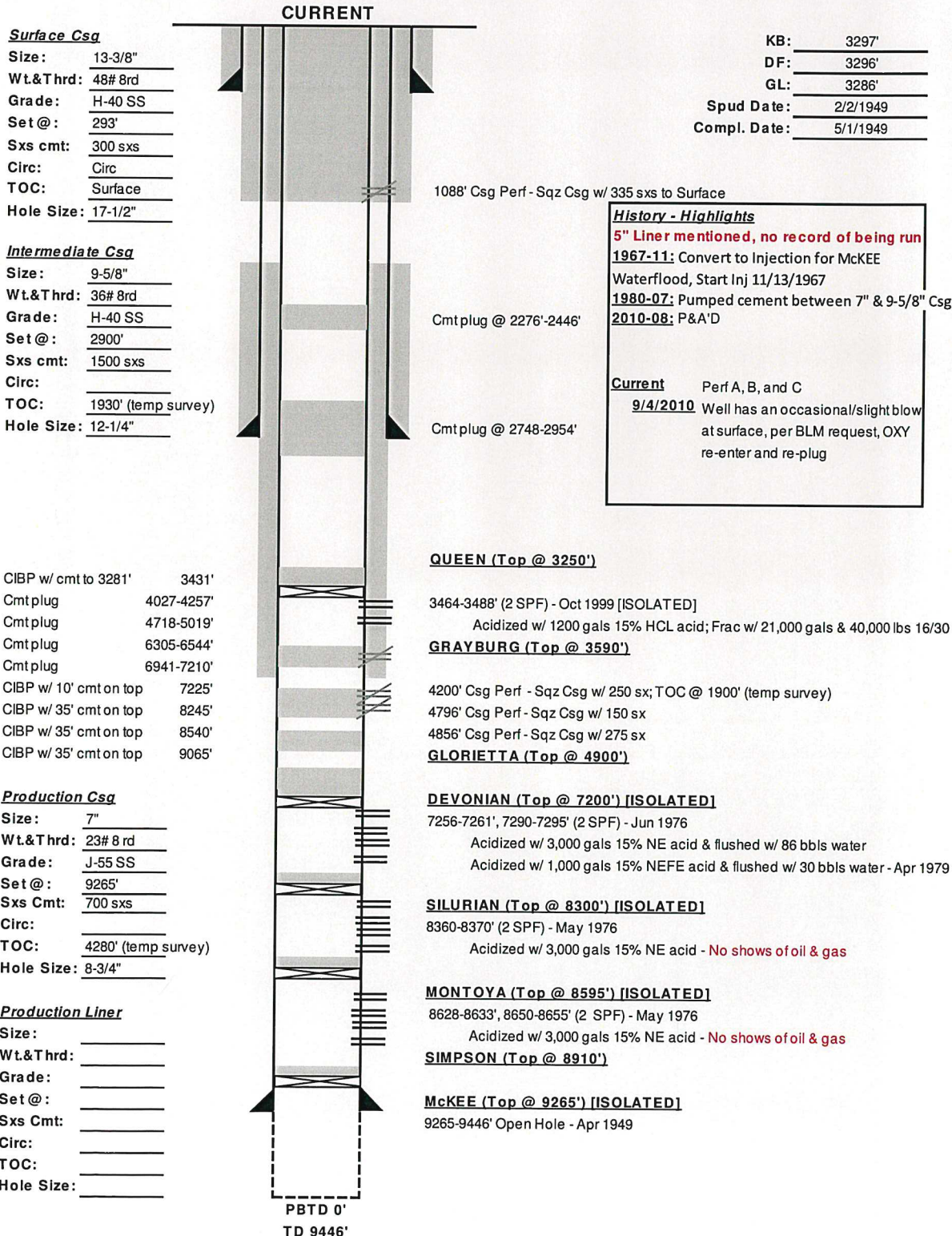


C E LAMUNYON 8

VI. Exhibit C4

API# 30-025-10829
 660 FSL 1980 FWL,
 Sec 22, T23S, R37E Lea Co., NM

Well Name: C E LAMUNYON #008 Lease No: NMLC030187 Lease Type: Federal
 Township: 23S Range: 37-E Sec: 22 N Location: 660' FSL & 1980' FWL
 County: Lea State: NM API: 30-025-10829 Formation: Langlie Mattix 7 Rvrs Queen GB



C E LAMUNYON 10

VI. Exhibit C5

API# 30-025-10830
1650 FSL 990 FWL,
Sec 22, T23S, R37E Lea Co., NM

OXY USA Inc. - Current
C.E. LaMunyon #10
API No. 30-025-10830

170sx @ 355'-Surface

55sx @ 1120-1005' WOC-Tag

60sx @ 2400-2275' WOC-Tag

60sx @ 2950-2820' WOC-Tag

65sx @ 3800-3660' WOC-Tag

100sx @ 4660-4290' WOC-Tag

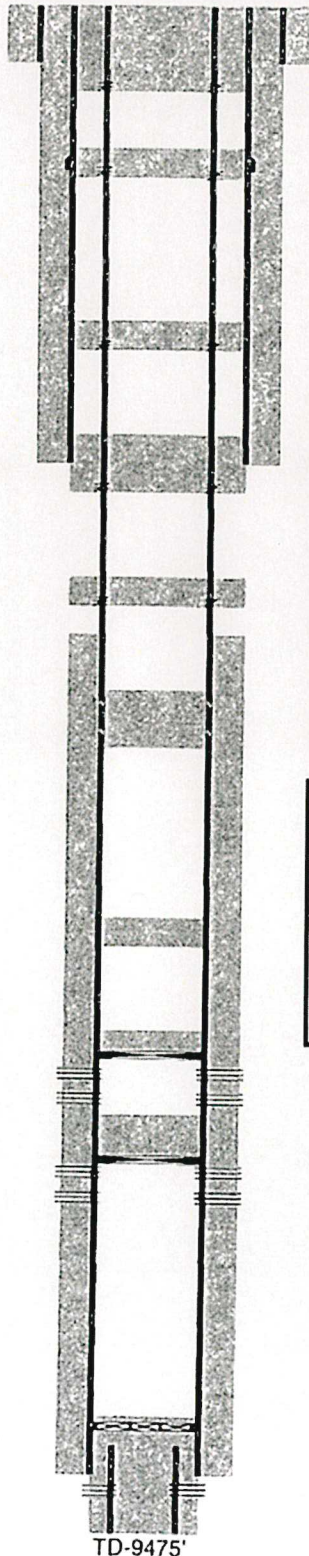
40sx @ 6050-5890'

8/10-CIBP @ 6526' w/ 25sx to 6414' Tag

8/10-26sx cmt @ 7245-7142' Tag

9/95-CIBP @ 7273' w/ 2sx

5/77-CR @ 9085'sqz w/ 100sx-PB-9080'



Perf @ 355'

Perf @ 1120'

Perf @ 2400'

Perf @ 2950'

Perf @ 3800'

Sqz csg lk @ 4315-4345' w/ 50sx
8/10-Sqz csg lk @ 4533-4631' w/ 150sx

Completions History
11/1967 – 4/1977: Converted to Injection: Rate @ 43 bbls per hour, 1800 psi
6/5/2010: Oxy requests TA for possible Paddock - Blinebry potential
1/3/2011: TA because amount of bleed off during MIT test. Must be online after 1/3/2011 or P&A
Perf Zone B and C: 24 and 26

Perfs @ 6575-6982'

Perfs @ 7318-7444'

17-1/2" hole @ 305'
13-3/8" csg @ 305'
w/ 300sx-TOC-Surf-Circ

12-1/4" hole @ 2900'
9-5/8" csg @ 2900'
DVT @ 1070'
w/ 1300sx-TOC-Surf-Circ

8-3/4" hole @ 9311'
7" csg @ 9311'
w/ 800sx-TOC-3988'-Calc

6-1/4" hole @ 9475'
5" liner @ 9276-9475'
w/ 50sx-TOC-9276'

Perfs @ 9362-9470'

TD-9475'

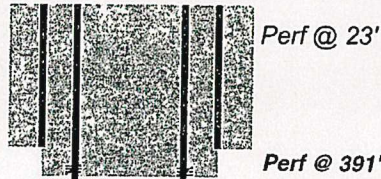
LAMUNYON B FEDERAL 2

VI. Exhibit C8

API# 30-025-10835
1650 FSL 2310 FEL,
Sec 22, T23S, R37E Lea Co., NM

LaMunyon B Federal #2
API No. 30-025-10835

205sx @ 391'-Surface



12-1/4" hole @ 341'
10-3/4" csg @ 341'
w/ 225sx-TOC-Surf-Circ

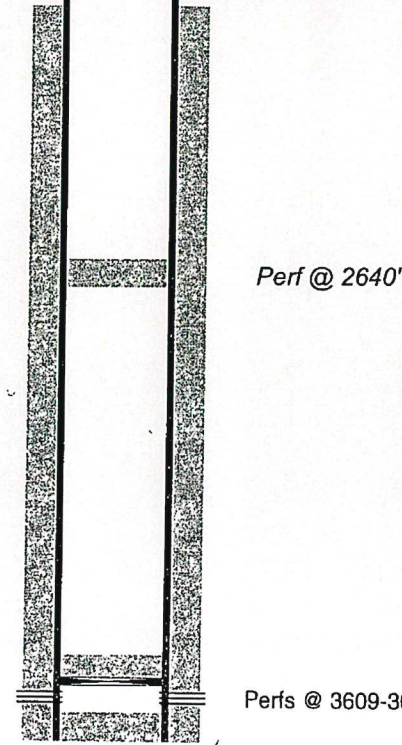
50 sx @ 669-445' WOC-Tag

50sx @ 1200'-1085' WOC-Tag

50sx @ 1757-1640' WOC-Tag
TOC = 1597'

25sx @ 2695-2213' WOC-Tag

CIBP @ 3559' w/ 25sx
TOC = 3318'



Perfs @ 3609-3634'

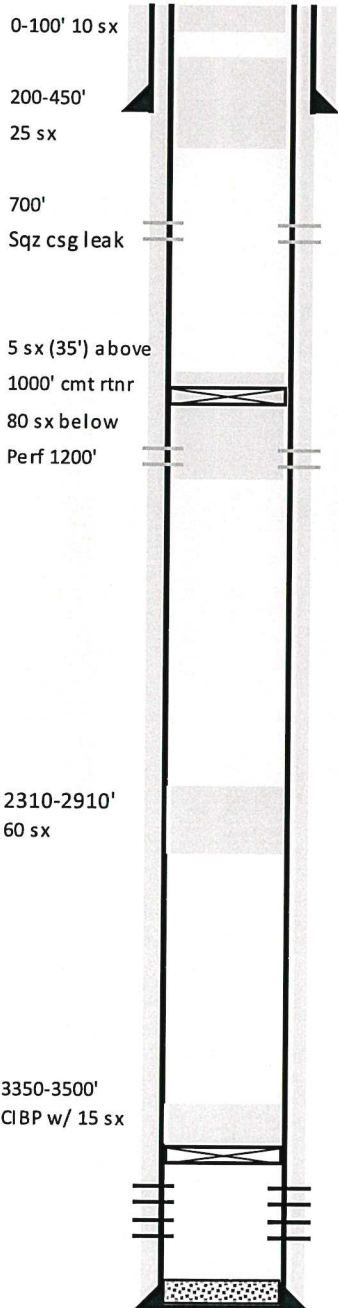
7-7/8" hole @ 3700'
5-1/2" csg @ 3679'
w/ 300sx-TOC-1946'-Calc

TD-3700'

LAMUNYON B FEDERAL 3

VI. Exhibit C9

API# 30-025-10836
 660 FSL 1980 FEL,
 Sec 22, T23S, R37E Lea Co., NM



Set Depth	Csg Details
Surface	
324'	10 3/4"
	225 sx

Hole Size
 12.25 inch

PLUGGED

PERFORATIONS:

9/10/59: 3595-3619

Prod
 3677' 5 1/2"
 300 sx

TD = 3678'

Tubing Details:		Run Date:		
Description	Qty	Length	Depth	

Pump Details:		Run Date:		
Description	Size	Qty	Length	Depth

Pump Description				
Formation Tops				
YATES		SAN ANDRES		TUBB
7 RIVERS		GLORIETA		DRINKARD
QUEEN		PADDOCK		ABO
PENROSE		BLINBRY		DEVONIAN

History	
8/25/1959	Spud
9/10/1959	Perf 3595-3619
10/28/1981	Set CIBP @ 3500'
8/9/1983	Squeeze csg leak @ 700'
9/15/1992	Plug and Abandon

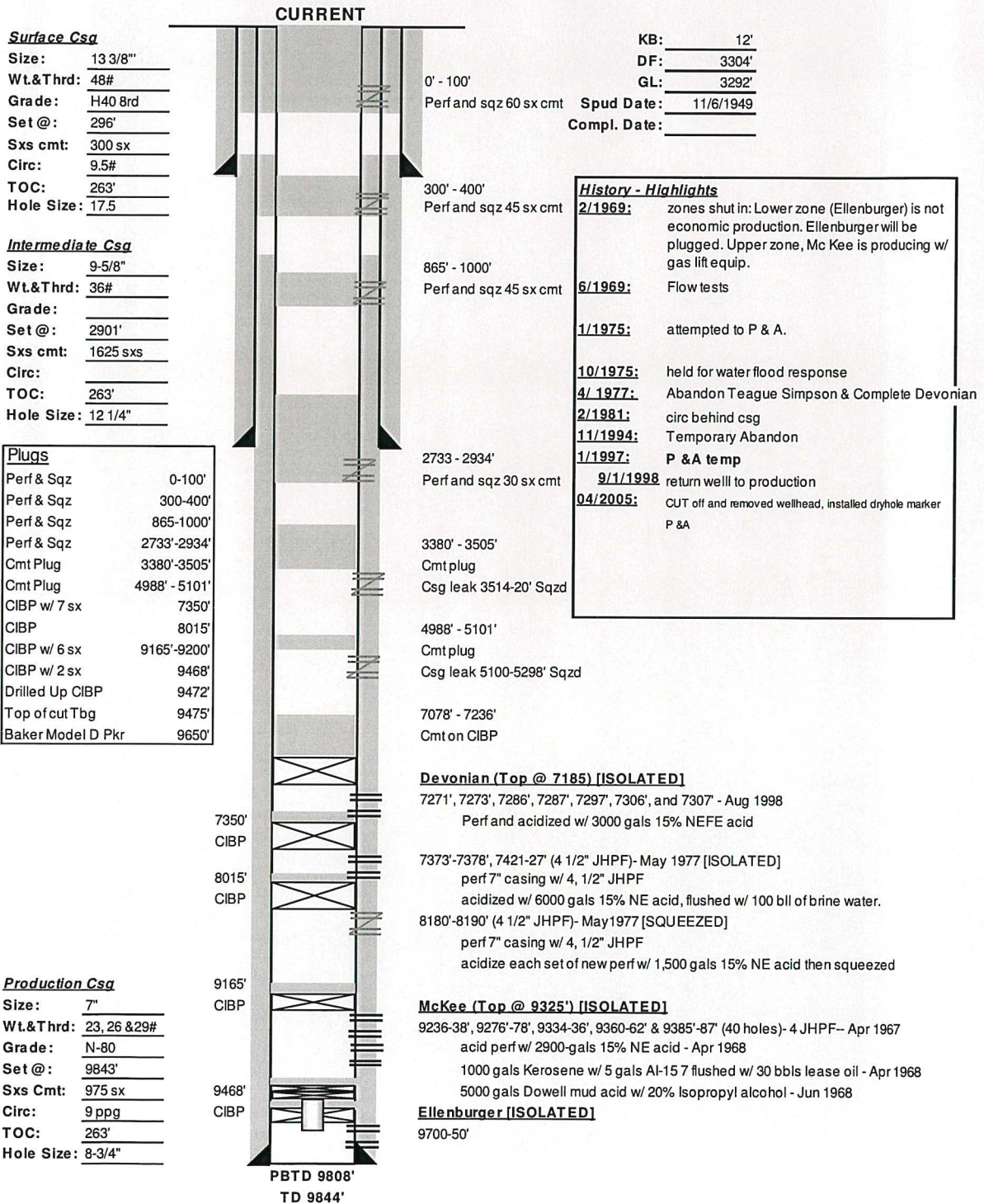
Pumping Unit	SPM	Stroke Length

C E LAMUNYON #11

VI. Exhibit C11

API# 30-025-10855
 660 FNL 1980 FWL,
 Sec 27, T23S, R37E Lea Co., NM

Well Name: C E LAMUNYON #011 Lease No: _____ Lease Type: Federal
 Township: 23S Range: 37-E Sec: 27C Location: 660 FNL & 1980 FWL
 County: Lea State: NM API: 30-025-10855 Formation: Teague Devonian



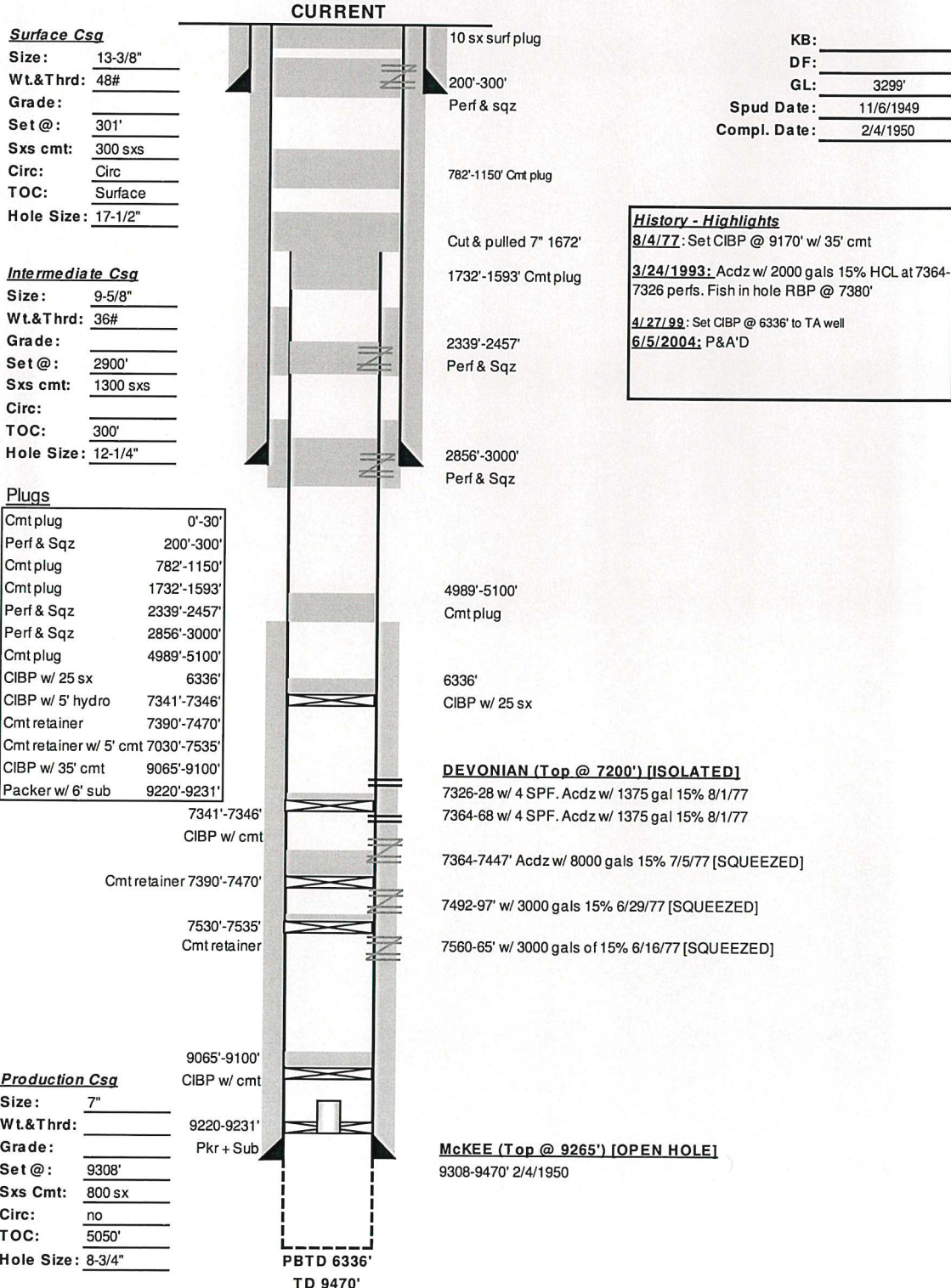
Tubulars - Capacities and Performance	
Fish: 2- 7/8" @ 9687, pkr @9650' model D	

C E LAMUNYON #12

VI. Exhibit C12

API# 30-025-10856
 1980 FNL 660 FWL,
 Sec 27, T23S, R37E Lea Co., NM

Well Name: C E LAMUNYON #012 Lease Type: Federal
 Township: 23S Range: 37-E Sec: 27 Location: 1980' FNL & 660' FWL
 County: Lea State: NM API: 30-025-10856 Formation: Teague Devonian



C E LAMUNYON #13

VI. Exhibit C13

API# 30-025-10857
 1980 FNL 1980 FWL,
 Sec 27, T23S, R37E Lea Co., NM

Well Name: C E LAMUNYON #013 Lease Type: Federal
 Township: 23S Range: 37-E Sec: 27 Location: 1980' FNL & 1980' FWL
 County: Lea State: NM API: 30-025-10857 Formation: Langlie Matix 7 Rvrs Queen GB

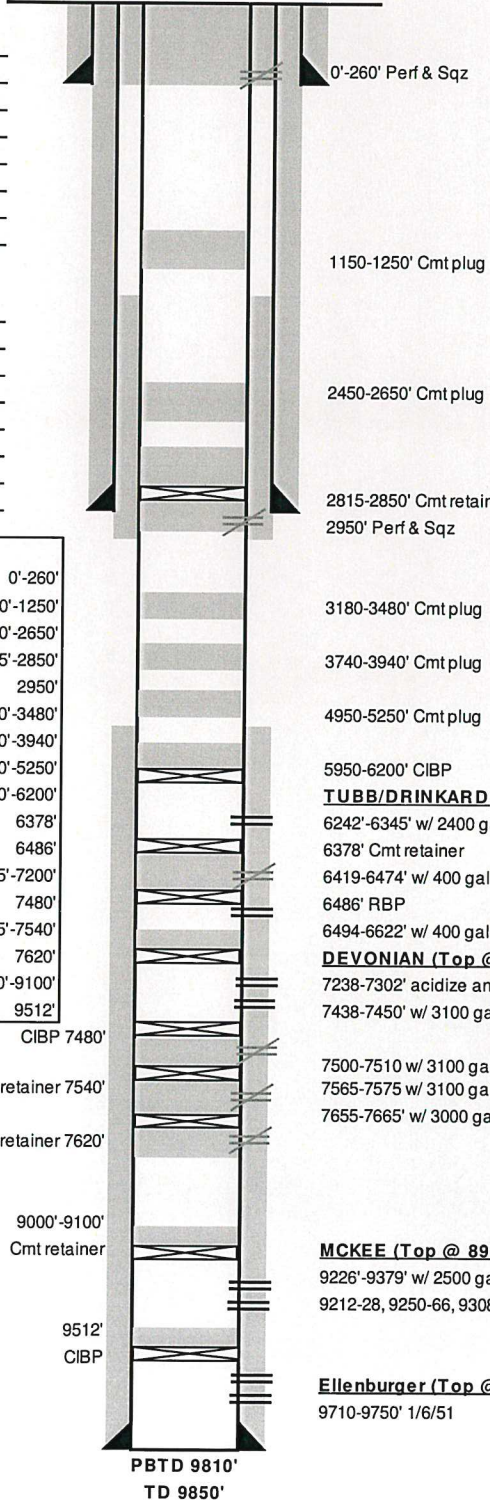
Surface Csq
 Size: 13-3/8"
 Wt.&Thrd: 48#
 Grade: _____
 Set @: 295'
 Sxs cmt: 300 sxs
 Circ: Circ
 TOC: Surface
 Hole Size: 17-1/4"

Intermediate Csq
 Size: 9-5/8"
 Wt.&Thrd: 36#
 Grade: _____
 Set @: 2900'
 Sxs cmt: 1675 sx
 Circ: _____
 TOC: 265'
 Hole Size: 12-1/4"

Plugs	
Perf & Sqz	0'-260'
Cmt plug	1150'-1250'
Cmt plug	2450'-2650'
Cmt retainer w/ 95 sx	2815'-2850'
Perf & Sqz	2950'
Cmt plug	3180'-3480'
Cmt plug	3740'-3940'
Cmt plug	4950'-5250'
CIBP w/ 40 sx	5950'-6200'
Cmt retainer	6378'
RBP	6486'
CIBP w/ 35' cmt	7165'-7200'
CIBP	7480'
Cmt retainer	7535'-7540'
Cmt retainer	7620'
Cmt retainer	9000'-9100'
CIBP w/ 2 sx	9512'

Production Csq
 Size: 7"
 Wt.&Thrd: 23,26 & 29#
 Grade: _____
 Set @: 9844'
 Sxs Cmt: 975 sx
 Circ: _____
 TOC: 5630'
 Hole Size: 8-3/4"

CURRENT



KB: _____
 DF: _____
 GL: 3284'
 Spud Date: 12/7/1950
 Compl. Date: 1/6/1951

History - Highlights

11/26/1968: Initial injection 504 bbls water in 24 hours_at 975#

8/13/1981: Abandon Lower Tubb & Reperf
 Found hole in casing at 4305'. Set cmt retainer at 4229'.
 Pump cmt on top of cmt retainer and dump 1/2 barrel cmt slurry. Dill cmt retainer and cmt to 4309'

Perf 6242-44', 6268-70', 6288-90', 6304-06', 6325-27', 5345-47' w/ two 1/2" burless JHPF (24 holes)
 Installed electric motor. Repaired flow line leak

1968-1977: injector. Returned to prod after 9/4/1992: P&A'D

1150-1250' Cmt plug

2450-2650' Cmt plug

2815-2850' Cmt retainer
 2950' Perf & Sqz

3180-3480' Cmt plug

3740-3940' Cmt plug

4950-5250' Cmt plug

5950-6200' CIBP
TUBB/DRINKARD
 6242'-6345' w/ 2400 gal 20% 8/8/81
 6378' Cmt retainer
 6419-6474' w/ 400 gal acid per set of perfs 12/22/1980 [SQUEEZED]
 6486' RBP
 6494-6622' w/ 400 gal acid per set of perfs 12/22/1980 [BELOW RBP]
DEVONIAN (Top @ 7240') [ISOLATED]
 7238-7302' acidize and frac 6/23/80 [BELOW CIBP]
 7438-7450' w/ 3100 gals 15% 6/9/1977 [BELOW CIBP]

7500-7510 w/ 3100 gals 15% 6/4/77 [SQUEEZED]
 7565-7575 w/ 3100 gals 15% 5/29/77 [SQUEEZED]
 7655-7665' w/ 3000 gal 15%, 4 SPF 5/24/77 [SQUEEZED]

MCKEE (Top @ 8910')
 9226'-9379' w/ 2500 gal 15% on 10/1968 [BELOW RETAINER]
 9212-28, 9250-66, 9308-36 5/27/50

Ellenburger (Top @ 9687') [ISOLATED]
 9710-9750' 1/6/51

PBTD 9810'
 TD 9850'

C E LAMUNYON #16

VI. Exhibit C14

API# 30-025-10858
 1980 FNL 1980 FEL,
 Sec 27, T23S, R37E Lea Co., NM

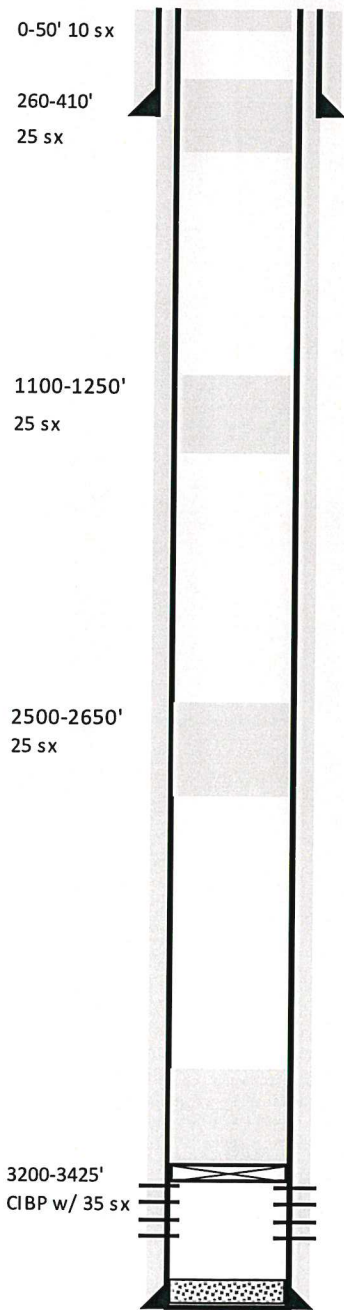
Depth	Set Depth	Csg Details	Hole Size
0-65'			
261-361'	311'	13 3/8" 48# H-40 SS 350 sx, circ	12.25 inch
980-1180'			
2610-2510	2900'	9 5/8" 36# J-55 SS 1625 sx	11.00 inch
2701-2951'			
Cmt plugs			
PLUGGED			
PERFORATIONS:			
3173-3523'		12/23/51: 3473-3555 OH Behind pipe	
Cmt plug		11/15/69: Blinbry 5384-5796' Squeezed	
		4/1/78: Devonian 7452-56' Squeezed	
4926-5426'		9/14/78: Devonian 7343-7401' Below plugs	
Cmt plug		9/7/51: 9403-10148 OH	
5940-6352'			
Cmt plug			
TOC 7260'			
	Liner	6302' 7", 23#, 26#, 29# N-80 SS 7500 sx Top of liner 2751'	
	Liner	7900' 4 1/2" 575 sx Top of liner 5026'	
		TD = 10,165'	

Tubing Details:		Run Date:		
Description	Qty	Length	Depth	
Pump Details:		Run Date:		
Description	Size	Qty	Length	Depth
Pump Description				
Formation Tops				
YATES	2560'	SAN ANDRES	TUBB	5990'
7 RIVERS		GLORIETA	4975'	DRINKARD
QUEEN	3295'	PADDOCK		ABO
PENROSE		BLINBRY		DEVONIAN 7350'
History				
5/25/1951	Spud			
9/7/1951	DST 9403-10148, no shows. Plug back to 3600'			
12/23/1951	Perf 3473-3555'. Stim w/ 425 qts SOWE #1 explosive			
11/15/1969	Ran 7" liner 2751-6302'. Perf 5384-5796'. Treat w/ 7000 gal 7.5%, 63,000# 20/40			
4/1/1978	Squeeze 5384-5796'. Clean out to 7900'. Run 4.5" liner 5026-7900'. Perf 7452-56'. Treat w/ 2000 gal 15%			
9/14/1978	Squeeze 7452-56'. Perf Devonian 7343-7401'. Treat w/ 5200 gal 15%,			
9/17/1992	Plug well			
Pumping Unit		SPM	Stroke Length	

C E LAMUNYON #19

VI. Exhibit C15

API# 30-025-10859
 1980 FNL 660 FEL,
 Sec 27, T23S, R37E Lea Co., NM



Set Depth	Csg Details
Surface	
335'	9 5/8" 32.3# 8rd 375 sx

Hole Size
12.25 inch

PLUGGED

PERFORATIONS:

2/17/55: 3478'-3564' Below plugs

Prod
3580' 7" 20# 8rd
2000 sx

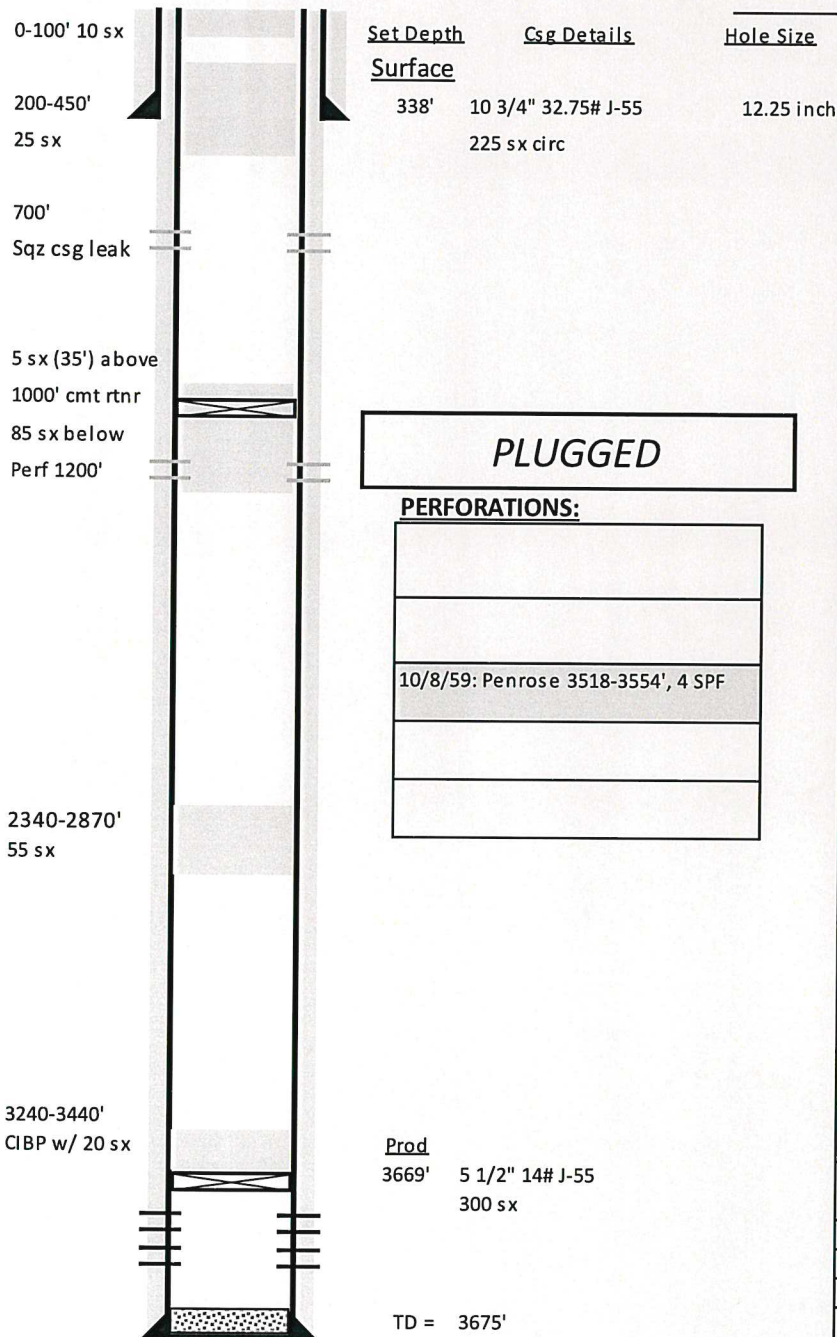
TD = 3580

Tubing Details:		Run Date:			
Description	Qty	Length	Depth		
Pump Details:		Run Date:			
Description	Size	Qty	Length	Depth	
Pump Description					
Formation Tops					
YATES		SAN ANDRES		TUBB	
7 RIVERS		GLORIETA		DRINKARD	
QUEEN		PADDOCK		ABO	
PENROSE		BLINBRY		DEVONIAN	
History					
2/4/1955	Spud				
2/17/1955	Perf 3478-3564'. No stimulation listed				
2/5/1976	Plugged				
Pumping Unit		SPM	Stroke Length		

LAMUNYON-FED C 1

VI. Exhibit C16

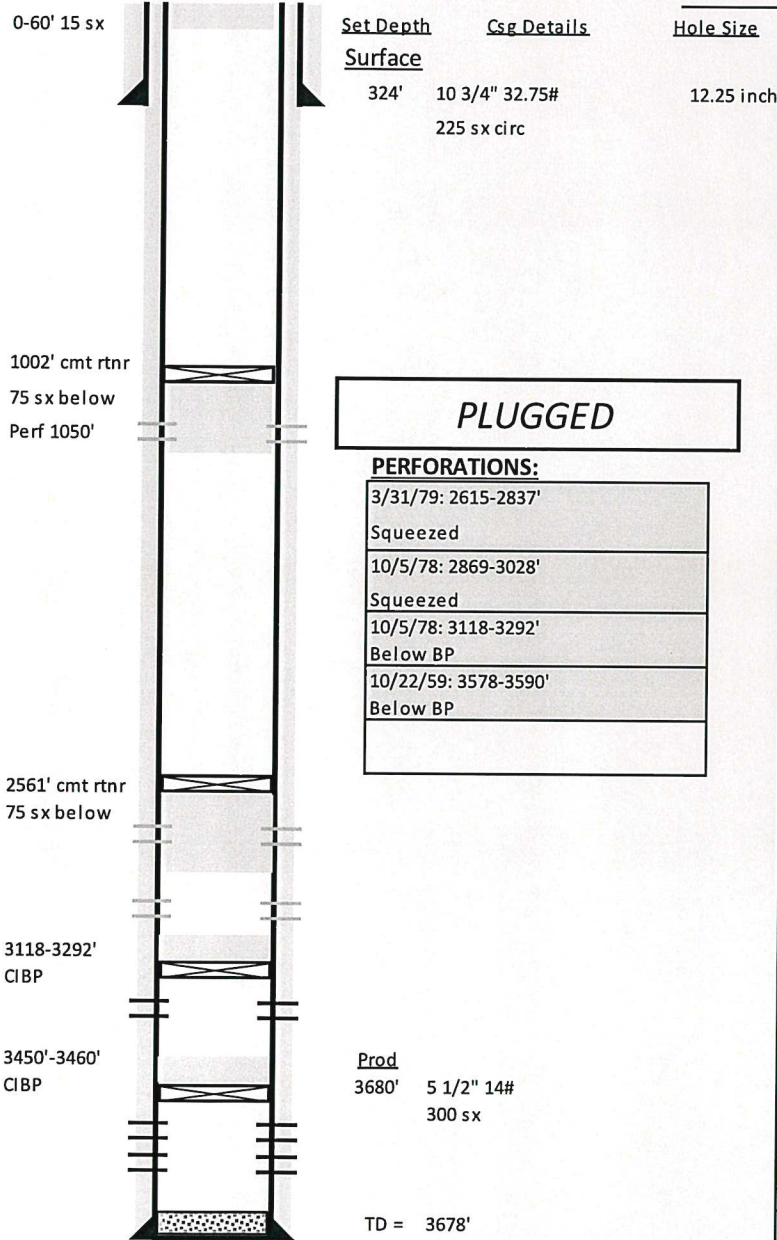
API# 30-025-10860
 660 FNL 1980 FEL,
 Sec 27, T23S, R37E Lea Co., NM



Tubing Details:		Run Date:			
Description	Qty	Length	Depth		
Pump Details:		Run Date:			
Description	Size	Qty	Length	Depth	
Pump Description					
Formation Tops					
YATES	2538'	SAN ANDRES		TUBB	
7 RIVERS	2810'	GLORIETA		DRINKARD	
QUEEN	3324'	PADDOCK		ABO	
PENROSE	3518'	BLINBRY		DEVONIAN	
History					
9/28/1959	Spud				
10/8/1959	Perf Penrose 3518-27, 3549-54 w/ 4 SPF. Frac w/ 45,000# sand				
5/27/1983	Set CIBP @ 3440' to TA well				
10/9/1983	Squeeze csg leak @ 700' w/ 150 sx				
9/9/1992	Plug and Abandon				
Pumping Unit		SPM	Stroke Length		

LAMUNYON C FEDERAL 2 VI. Exhibit C17

API# 30-025-10861
 660 FNL 990 FEL,
 Sec 27, T23S, R37E Lea Co., NM



Tubing Details:		Run Date:	
Description	Qty	Length	Depth
Pump Details:		Run Date:	
Description	Size	Qty	Length
Pump Description			
Formation Tops			
YATES	2614'	SAN ANDRES	TUBB
7 RIVERS	2863'	GLORIETA	DRINKARD
QUEEN	3385'	PADDOCK	ABO
PENROSE	3497'	BLINBRY	DEVONIAN
History			
10/11/1959	Spud		
10/22/1959	Perf 3578-81, 3583-90. Frac w/ 21,000# sand		
10/5/1978	Set CIBP @ 3460'. Perf Jalmat 3118-3292'. Not economic. Set CIBP @ 3055'. Perf Jalmat 2869-3028'. 1500 gal 15%		
3/31/1979	Squeeze Jalmat 2869-3028. Perf upper Jalmat 2615-2837' Treat w/ 1750 gal 15%		
4/2/1981	Plugged and Abandoned well		
Pumping Unit		SPM	Stroke Length

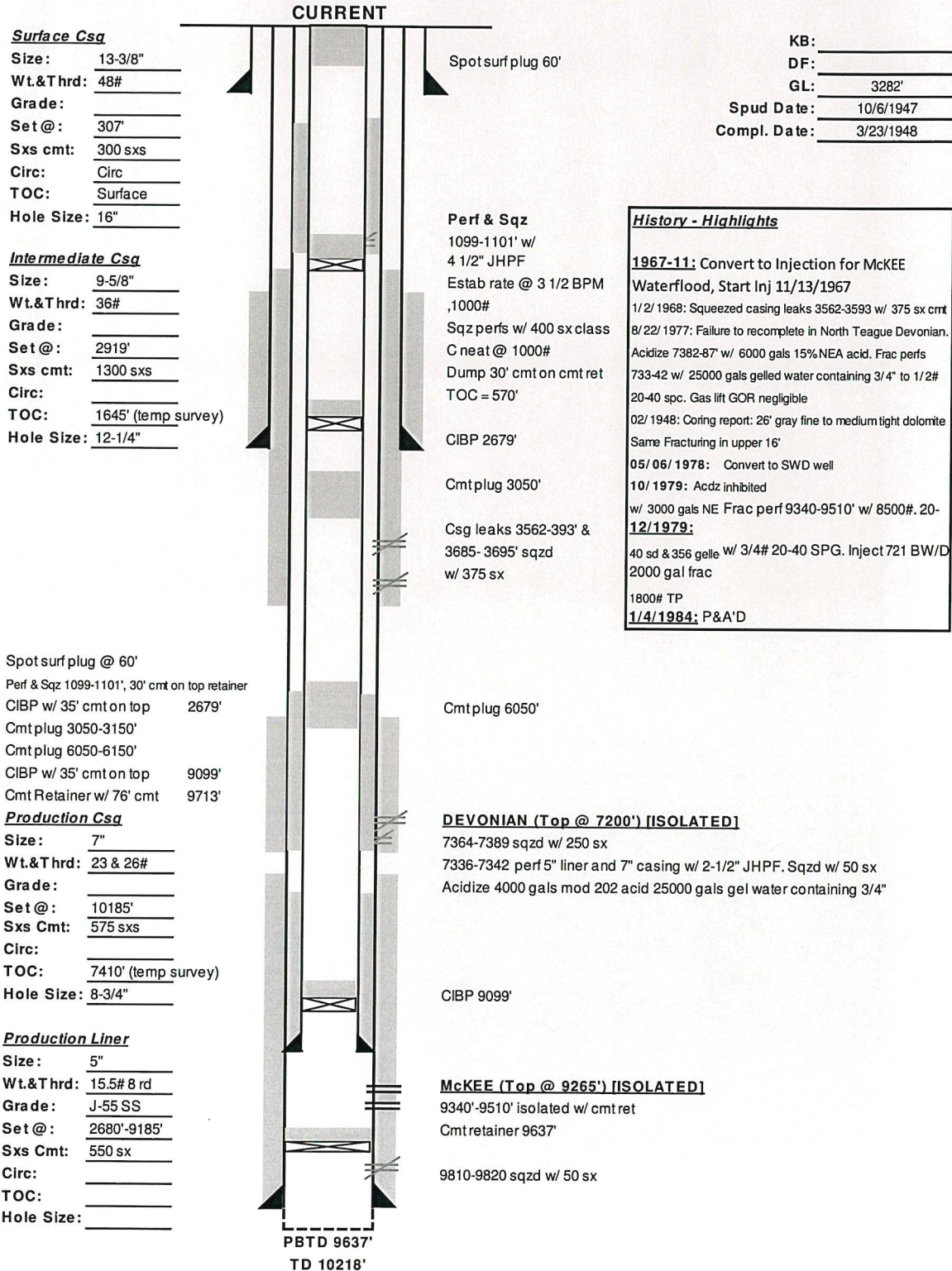
History	
10/11/1959	Spud
10/22/1959	Perf 3578-81, 3583-90. Frac w/ 21,000# sand
11/29/1978	Set CIBP @ 3460'. Perf Jalmat 3118-20, 3154-56, 3172-74, 3211-13, 3236-38, 3270-72, 3290-92'. Treat w/ 2000 gal 15% and 35,000# 20/40 sand. No commercial prod. Set CIBP @ 3055'. Perf Jalmat 2869-714, 2902-04, 2943-45, 2970-72, 2995-97, 3026-28'. Acidize w/ 1500 gal 15%
3/31/1979	Squeeze Jalmat 2869-3028. Perf upper Jalmat 2615-17, 2665-67, 2689-91, 2719-21, 2762-64, 2798-2800, 2835-2837'. Treat w/ 250 gal 15% per zone
4/2/1981	Plugged and Abandoned well

C E LAMUNYON 6

VI. Exhibit C18

API# 30-025-10863
 766 FNL 554 FEL,
 Sec 28, T23S, R37E Lea Co., NM

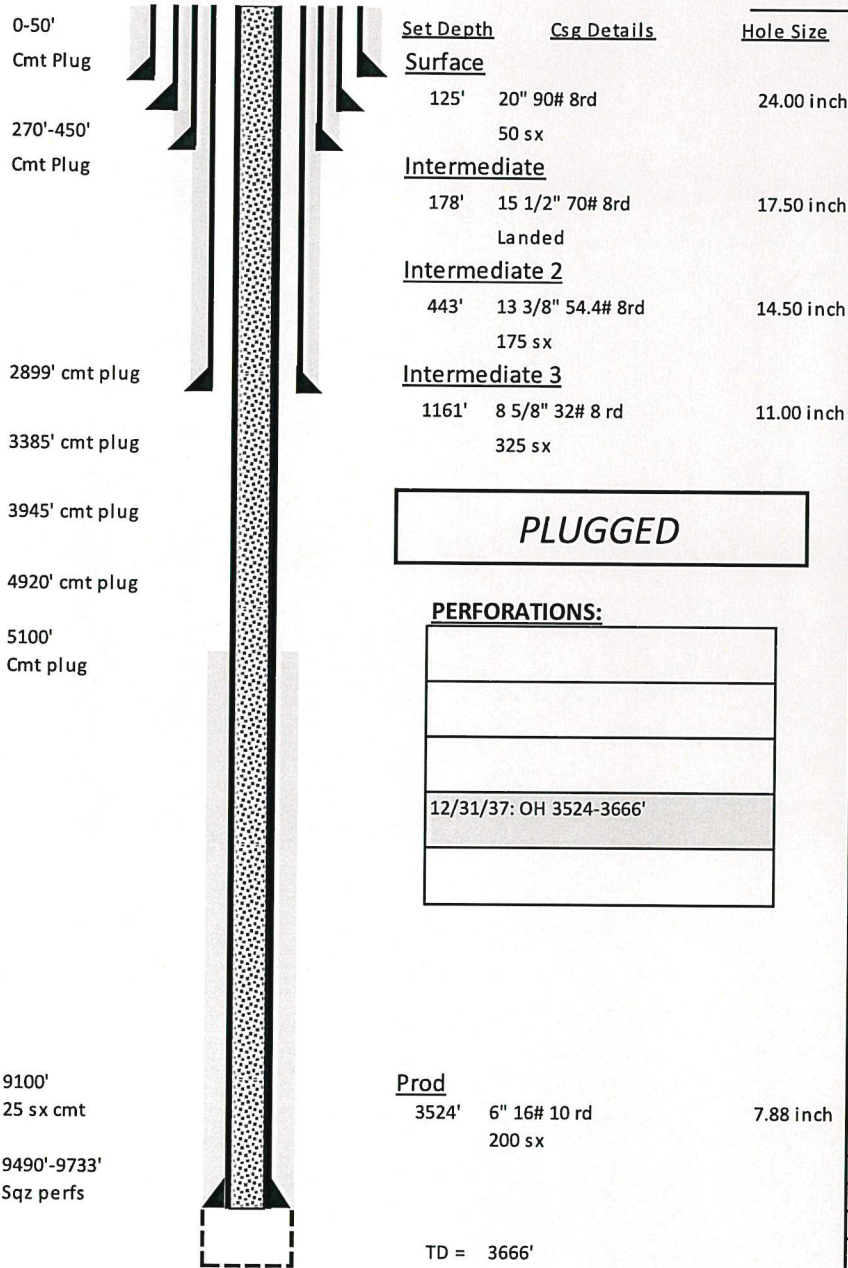
Well Name: C E LAMUNYON #006 Lease No: NMLC030187 Lease Type: Federal
 Township: 23S Range: 37-E Sec: 28 Location: 766 FNL & 554' FEL
 County: Lea State: NM API: 30-025-10863 Formation: Langlie Mattix 7 Rvrs Queen GB



LAMUNYON 1

VI. Exhibit C19

API# 30-025-10864
 660 FNL 660 FEL,
 Sec 28, T23S, R37E Lea Co., NM



<u>Tubing Details:</u>		<u>Run Date:</u>		
<u>Description</u>	<u>Qty</u>	<u>Length</u>	<u>Depth</u>	
<u>Pump Details:</u>				
<u>Description</u>	<u>Size</u>	<u>Qty</u>	<u>Length</u>	<u>Depth</u>
<u>Pump Description</u>				
<u>Formation Tops</u>				
YATES	SAN ANDRES		TUBB	
7 RIVERS	GLORIETA		DRINKARD	
QUEEN	PADDOCK		ABO	
PENROSE	BLINBRY		DEVONIAN	
<u>History</u>				
12/12/1933	Spud to 539'			
12/31/1937	Completed drilling			
3/9/1938	Intention to plug filed. No plugging report			
<u>Pumping Unit</u>				
	<u>SPM</u>	<u>Stroke Length</u>		

History

12/12/1933	Spud
12/31/1937	Completed drilling
3/9/1938	Intention to plug filed. No plugging report

SALTMOUNT 2

VI. Exhibit C20

API# 30-025-22254
660 FSL 1980 FEL,
Sec 21, T23S, R37E Lea Co., NM

Saltmount #2
API No. 30-025-22254

100sx @ 250'-Surface

Perf @ 250' 12-1/2" hole @ 1066'
9-5/8" csg @ 1066'
w/ 450sx-TOC-Surf-Circ

60sx @ 1170-1015' WOC-Tag
TOC = 910'

Perf @ 1120'

40sx @ 2375-2275' WOC-Tag
TOC = 2265'

Perf @ 2375'

40sx @ 2800-2700' WOC-Tag
TOC = 2690'

Perf @ 2800'

40sx @ 3606-3375' WOC-Tag

Perf @ 3550'

CIBP @ 5110' w/ 40sx to 4874'

8-3/4" hole @ 6396'
7" csg @ 6396'
w/ 400sx-TOC-3729'-Calc

CIBP @ 5300'

Perfs @ 5160-5190'

Perfs @ 5356-5559'

Perfs @ 5618-5708' sqz w/ 50sx cmt

Perfs @ 5793-5894'

Perfs @ 6003-6112' sqz w/ 100sx cmt

Perfs @ 6153-6320'

CIBP @ 6100'

PB-6340'

TD-6396'

E C HILL B #2

VI. Exhibit C21

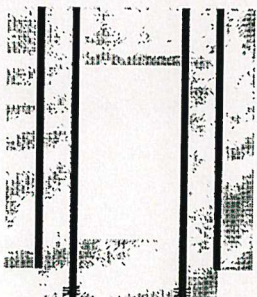
API# 30-025-22337
990 FSL 1650 FWL,
Sec 27, T23S, R37E Lea Co., NM

E.C. Hill B #2
API No. 30-025-22337

50sx @ 200'-Surface

12-1/4" hole @ 1066'
9-5/8" csg @ 1066'
w/ 450sx-TOC-Surf-Circ

210sx @ 1116-1016' WOC-Tag
TOC = 1101'



Perf @ 1116'

45sx @ 2465-2365' WOC-Tag
TOC = 2204'

Perf @ 2465'

30sx @ 2800-2700'
TOC = 2626'

30sx @ 3800-3700'
TOC = 3626'

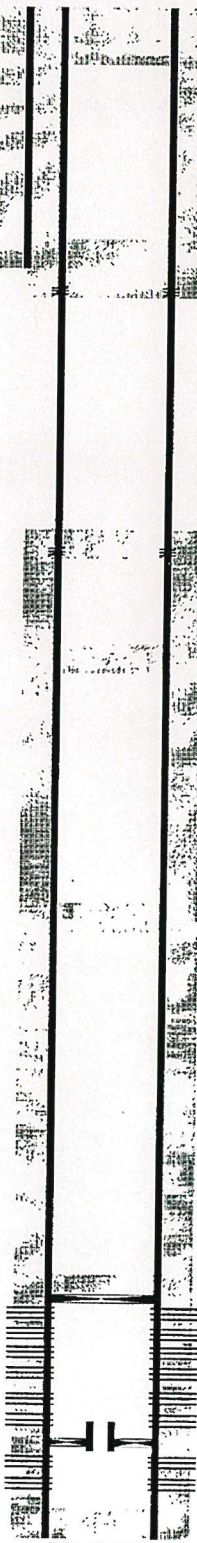
CIBP @ 5308' w/ 25sx
TOC = 5159'

8-3/4" hole @ 6355'
7" csg @ 6355'
w/ 550sx-TOC-2330'-CBL

Perfs @ 5365-5866'

7/77-Pkr @ 5950' w/ tbg & tail pipe

Perfs @ 6039-6211'



TD-6355'

M K STEWART 4

VI. Exhibit C22

API# 30-025-22500
1980 FSL 660 FEL,
Sec 28, T23S, R37E Lea Co., NM

M.K. Stewart #4
API No. 30-025-22500

25sx @ Surface
64'-Surface

30sx @ 1150 WOC-Tag
TOC = 799'

40 sx @ 2719'-2239'

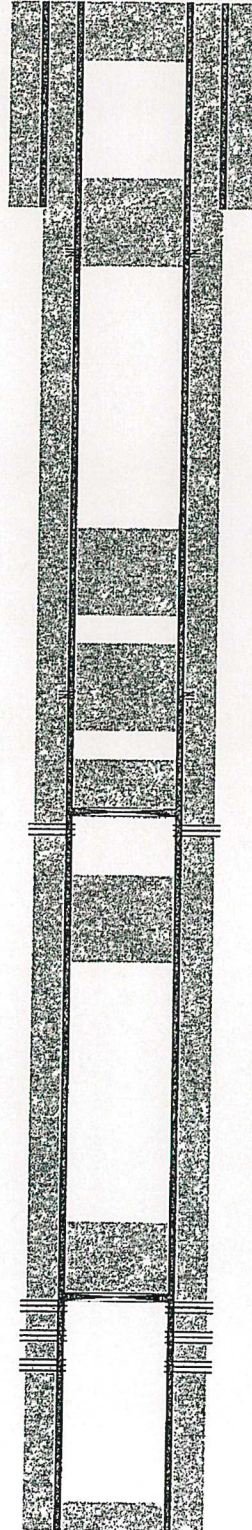
25sx @ 2850
TOC = 2719'

CIBP @ 3390' w/ 25 sx
TOC = 3144'

25sx @ 3875-3700'

60 sx @ 5347-4755'

CIBP @ 5350' w/ 2sx



11" hole @ 891'
8-5/8" csg @ 891'
w/ 340sx-TOC-Surf-Circ

Perf @ 1120' sqz 230sx to surface-circ

Perf @ 2800' sqz 400sx to 1170'-TS

Perfs @ 3423-3454'

Perfs @ 5408-5766'

7-7/8" hole @ 6277'
5-1/2" csg @ 6275'
w/ 510sx-TOC-2825'-CBL

TD-6277

E C HILL C #2

VI. Exhibit C23

API# 30-025-22560
2310 FSL 330 FWL,
Sec 27, T23S, R37E Lea Co., NM

E.C. Hill C #2
API No. 30-025-22560

95sx @ 250'-Surface

90 sx @ 1100' WOC-Tag
TOC = 893'

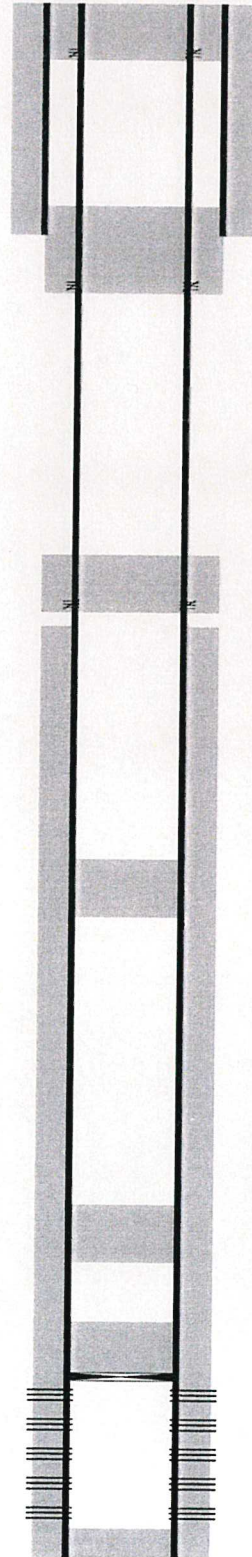
40sx @ 2405' WOC-Tag
TOC = 2220'

40sx @ 3580' WOC-Tag
TOC = 3340'

25sx @ 5020' WOC-Tag
TOC = 4871'

25sx @ 5383
CIBP @ 5383'
TOC = 5230'

PB-5951'



Perf @ 250'

Perf @ 1100'

Perf @ 2405'

Perfs @ 5433-5889'

12-1/4" hole @ 994'
9-5/8" csg @ 994'
w/ 400sx-TOC-Surf-Circ

8-3/4" hole @ 5994'
7" csg @ 5994'
w/ 525sx-TOC-2500'-Calc

TD-5994'

C E LAMUNYON 39

VI. Exhibit C24

API# 30-025-22593
460 FNL 1980 FWL,
Sec 27, T23S, R37E Lea Co., NM

C.E. LaMunyon #39
API No. 30-025-22593

45 sx @ 150' to surface

Fish 23 jts, pkr @ 872'

45 sx @ 900', TOC = 800'

45sx @ 1185' WOC-Tag
TOC = 900'

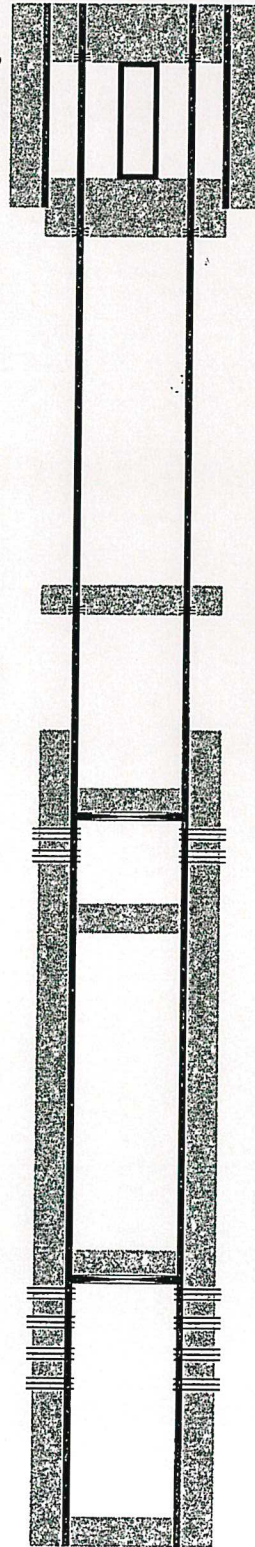
45sx @ 2560 WOC-Tag
TOC = 2352'

CIBP @ 3365' w/ 25sx to 3119'

25sx @ 3860 WOC-Tag
TOC = 3552'

25sx @ 5300
1982-CIBP @ 5300'
TOC = 4808'

PB-6253'



Perf @ 150'

11" hole @ 908'
8-5/8" csg @ 908'
w/ 425sx-TOC-Surf-Circ

Perf @ 900'

Perf @ 1185'

Perf @ 2560'

Perfs @ 3397-3538'

Perfs @ 5352-5803'

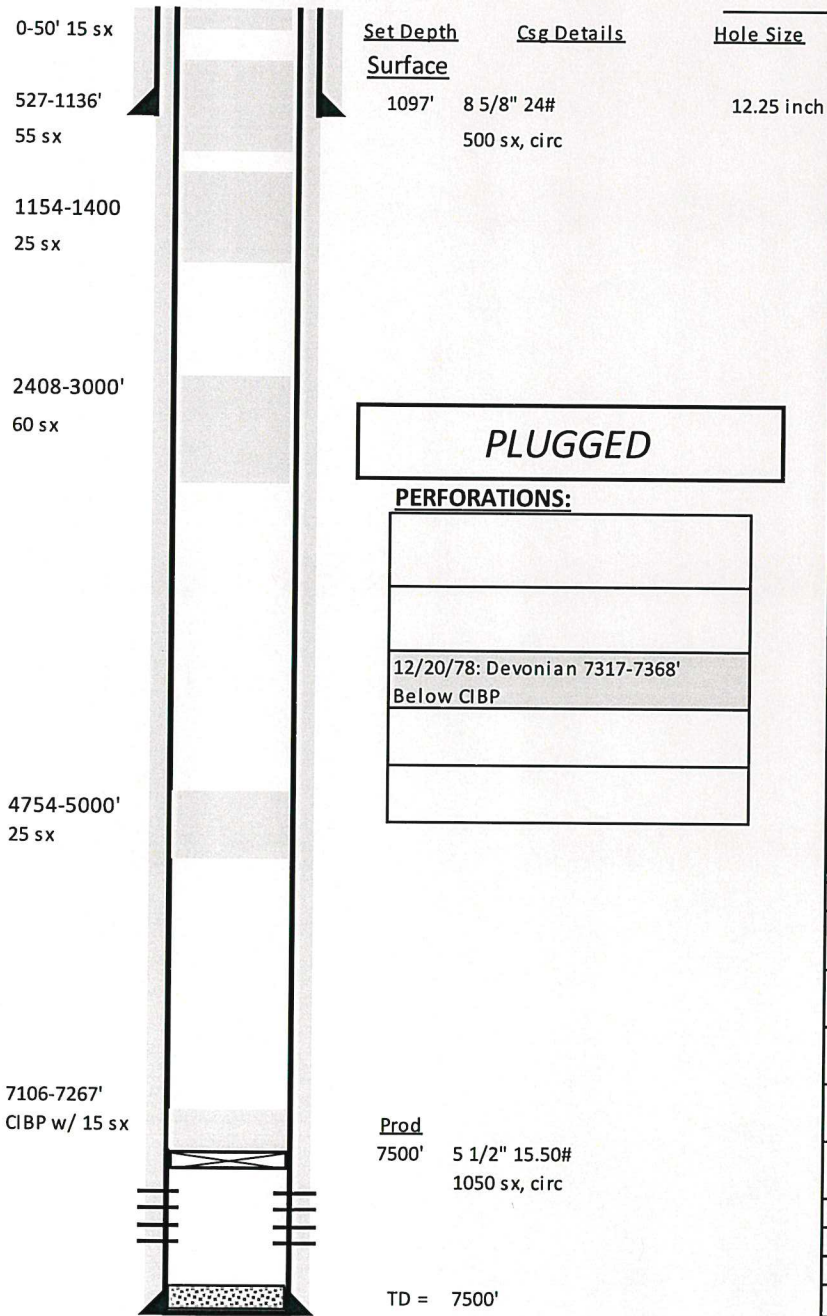
7-7/8" hole @ 6300'
5-1/2" csg @ 6300'
w/ 510sx-TOC-3061'-Calc

TD-6300'

C E LAMUNYON 47

VI. Exhibit C25

API# 30-025-26067
 2180 FNL 560 FWL,
 Sec 22, T23S, R37E Lea Co., NM



Tubing Details:		Run Date:			
Description	Qty	Length	Depth		
Pump Details:		Run Date:			
Description	Size	Qty	Length	Depth	
Pump Description					
Formation Tops					
YATES		SAN ANDRES	4128'	TUBB	5980'
7 RIVERS	2908'	GLORIETA	4900'	DRINKARD	6224'
QUEEN	3382'	PADDOCK		ABO	6494'
PENROSE		BLINBRY	5300'	DEVONIAN	7306'
History					
11/28/1978	Spud				
12/20/1978	Perf Devonian 7317-7368'. Treat w/ 950 gal 15%				
4/27/1999	Set CIBP @ 7267'				
7/8/2002	Plugged				
Pumping Unit		SPM	Stroke Length		

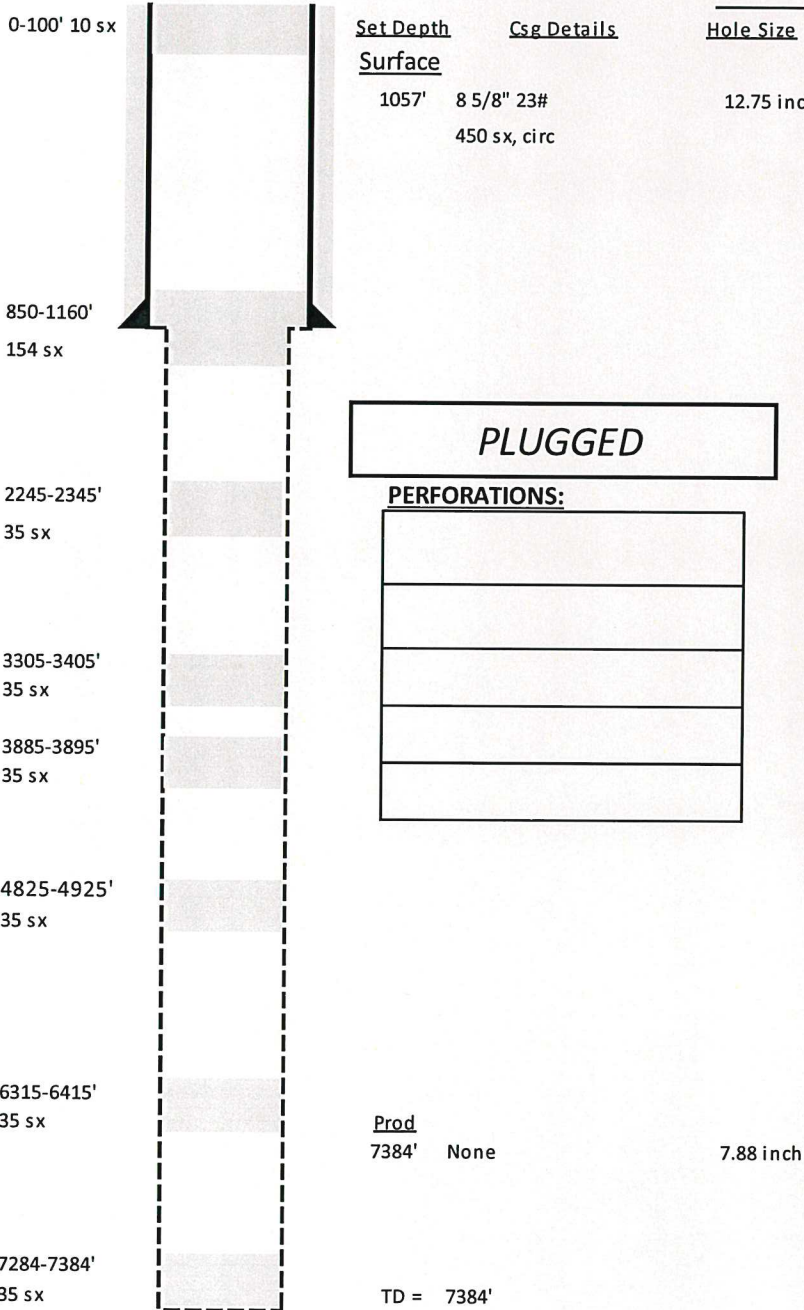
History

11/28/1978	Spud
12/20/1978	Perf 7317-20, 7455-58, 7365-68 w/ 2 SPF. Treat w/ 950 gal 15%
4/27/1999	Set CIBP @ 7267'
7/8/2002	Plugged

SALTMOUNT 1

VI. Exhibit C26

API# 30-025-26945
 990 FSL 330 FEL,
 Sec 21, T23S, R37E Lea Co., NM



Tubing Details:		Run Date:	
Description	Qty	Length	Depth
Pump Details:		Run Date:	
Description	Size	Qty	Length
Pump Description			
Formation Tops			
YATES	SAN ANDRES	TUBB	
7 RIVERS	GLORIETA	DRINKARD	
QUEEN	PADDOCK	ABO	
PENROSE	BLINBRY	DEVONIAN	
History			
7/27/1980	Spud. Set surf csg. No prod csg		
7/30/1980	Plugged and Abandoned well		
Pumping Unit		SPM	Stroke Length

PLUGGED

PERFORATIONS:

Prod
 7384' None 7.88 inch

TD = 7384'

History	
7/27/1980	Spud. Set surf csg. No shows through pay, did not set prod csg
7/30/1980	Plugged and Abandoned well

C E LAMUNYON 58

VI. Exhibit C27

API# 30-025-33444
2310 FNL 1340 FEL,
Sec 28, T23S, R37E Lea Co., NM

C.E. LaMunyon #58
API No. 30-025-33444

60sx @ 300'-Surface

25sx @ 1145' WOC-Tag
TOC = 895'

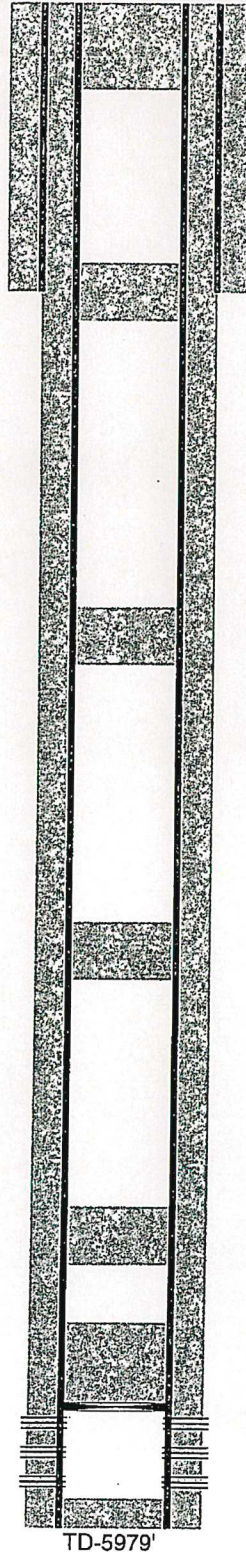
25sx @ 2540' WOC-Tag
TOC = 2397'

25sx @ 3820' WOC-Tag
TOC = 3586'

25sx @ 4950'
TOC = 4723'

25sx @ 5309'

2/11-CIBP @ 5309'
TOC = 5047'



11" hole @ 1092'
8-5/8" csg @ 1092'
w/ 635sx-TOC-Surf-Circ

7-7/8" hole @ 5979'
5-1/2" csg @ 5979'
w/ 1300sx-TOC-Surf-Circ
Perfs @ 5395-5889'

TD-5979'

E C HILL B #6

VI. Exhibit C29

API# 30-025-33448
1340 FSL 2310 FWL,
Sec 27, T23S, R37E Lea Co., NM

E.C. Hill B #6
API No. 30-025-33448

35sx @ 250'-Surface

25sx @ 1185-1010' WOC-Tag

TOC = 1015'

40sx @ 2760-2475' WOC-Tag

TOC = 2352'

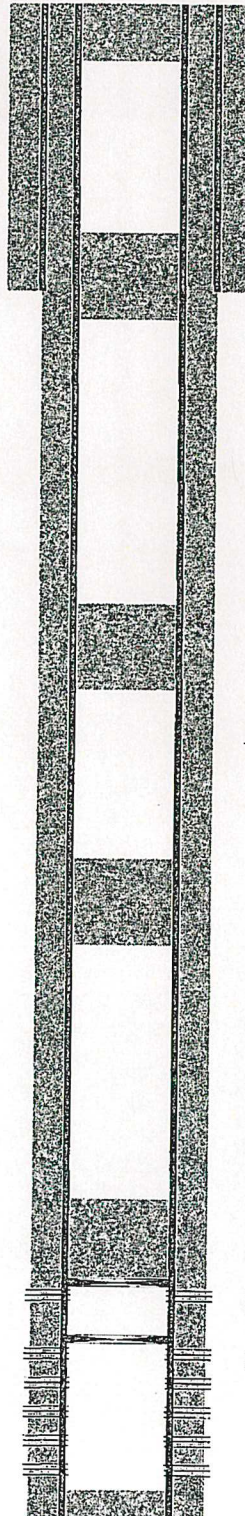
40sx @ 3780-3500' WOC-Tag

TOC = 3355'

CIBP @ 5100' w/ 40sx to 4820' WOC-Tag

TOC = 4686'

11/99-CIBP @ 5285'



11" hole @ 1131'
8-5/8" csg @ 1131'
w/ 930sx-TOC-Surf-Circ

Perf @ 5149-5164'

Perf @ 5331-5831'

7-7/8" hole @ 5940'
5-1/2" csg @ 5940'
w/ 1510sx-TOC-Surf-Circ

TD-5940'

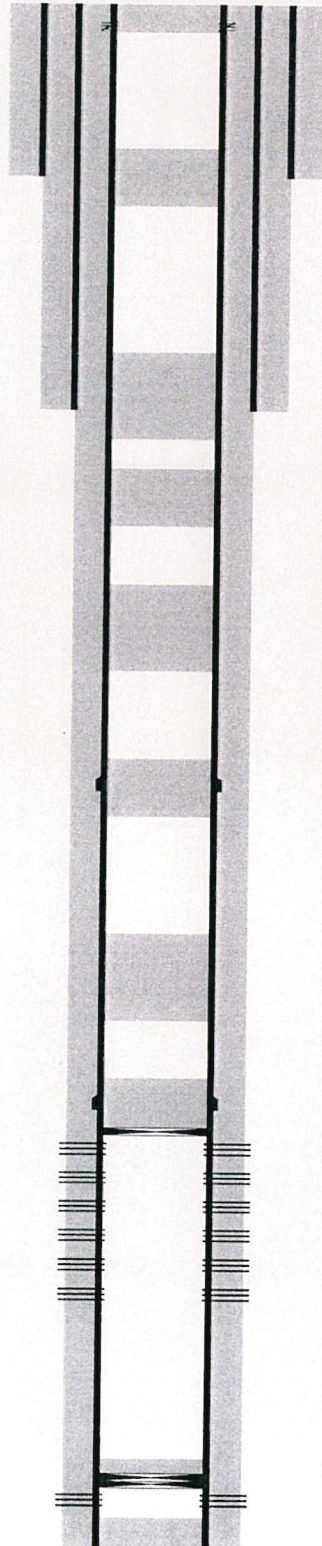
E C HILL B #7

VI. Exhibit C31

API# 30-025-35013
990 FSL 2290 FWL,
Sec 27, T23S, R37E Lea Co., NM

E.C. Hill B #7
API No. 30-025-35013

55sx @ 140'-Surface



Perf @ 140'

17-1/2" hole @ 1075'
13-3/8" csg @ 1075'
w/ 1200sx-TOC-Surf-Circ

25sx @ 1175 WOC-Tag

TOC = 954'

35sx @ 2550 WOC-Tag

TOC = 2185'

25sx @ 3010 WOC-Tag

TOC = 2709'

35sx @ 3900 WOC-Tag

TOC = 3584'

25sx @ 5075 WOC-Tag

TOC = 4772'

40sx @ 6450 WOC-Tag

TOC = 5078'

CIBP @ 7231' w/ 25 sx to 7006'

Perfs @ 7327-8075'

TOC = 8902'

CIBP @ 9222' w/ 3sx cmt to 9198' Tagged
CIBP @ 9227'

7-7/8" hole @ 9530'
5-1/2" csg @ 9530'
w/ 2950sx-TOC-140'-CBL
DVT @ 7014'-5001'

Perfs @ 9276-9304'

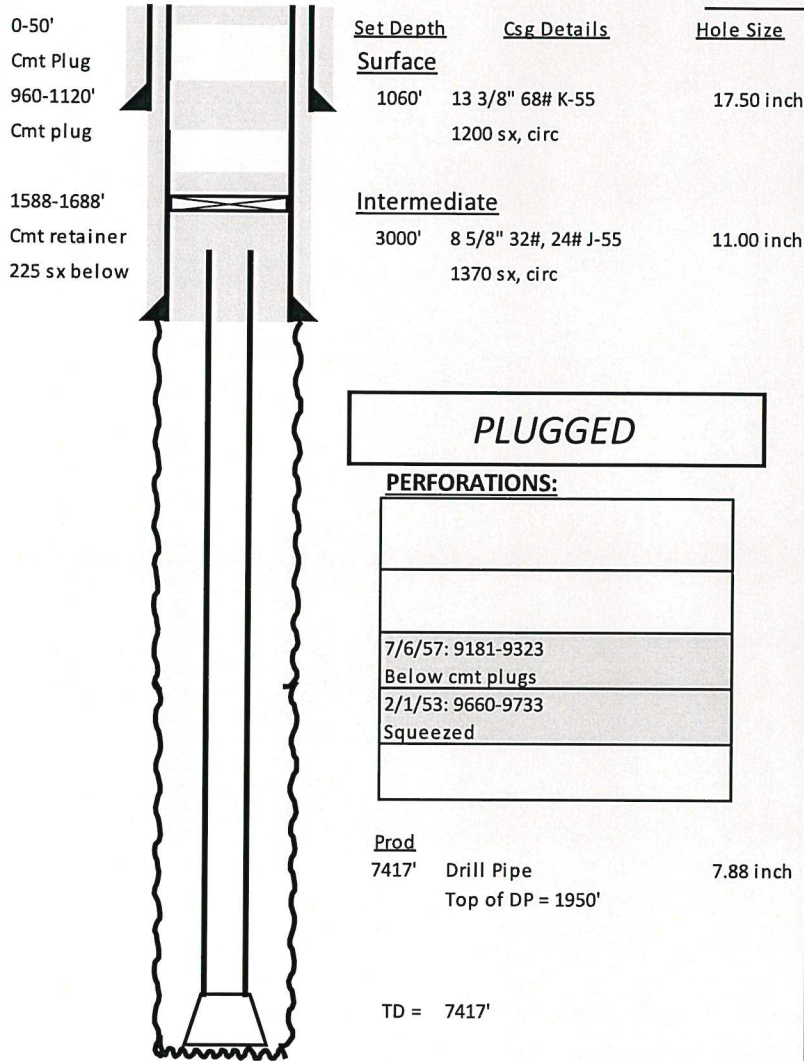
PB-9486'

TD-9530'

LAMUNYON C E 71

VI. Exhibit C32

API# 30-025-35058
 2310 FNL 1310 FWL,
 Sec 27, T23S, R37E Lea Co., NM



Tubing Details:		Run Date:			
Description	Qty	Length	Depth		
Pump Details:		Run Date:			
Description	Size	Qty	Length	Depth	
Pump Description					
Formation Tops					
YATES		SAN ANDRES		TUBB	5936'
7 RIVERS		GLORIETA	4931'	DRINKARD	6208'
QUEEN		PADDOCK		ABO	
PENROSE		BLINBRY	5308'	DEVONIAN	
History					
6/21/2000	Spud				
7/9/2000	Csg collaps at 1950' while drilling ahead at 7417' Plugged well				
Pumping Unit		SPM	Stroke Length		

History	
6/21/2000	Spud
7/9/2000	Complete Ellenburger 9660-9733'
7/6/1957	Complete McKee 9181-89, 9231-36, 9245-52, 9287-93, 9304-23', 500 gal acid and 10,000# sand. Squeezed Ellenburger. PBTD = 9490'
1/18/1966	Plugged
3/21/2000	Re-pumped top two plugs

C E LAMUNYON 79

VI. Exhibit C34

API# 30-025-35942
1700 FNL 10 FEL,
Sec 21, T23S, R37E Lea Co., NM

C.E. Lamunyon #79
API No. 30-025-35942

65 sx 140'-0'

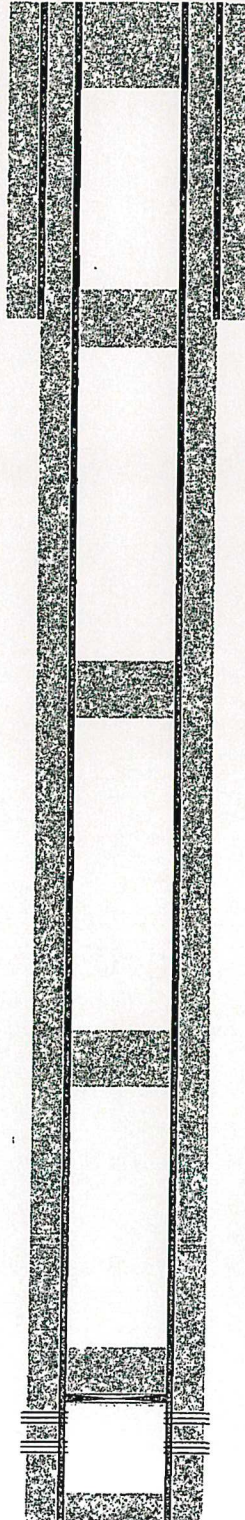
62 sx @ 300'-140'

25sx @ 1244' WOC-Tag
TOC = 995'

25sx @ 2585-2460' WOC-Tag
TOC = 2337'

25sx @ 3850-3710' WOC-Tag
TOC = 3609'

CIBP @ 5040' w/ 25sx to 4885'
Packer @ 5050'



Perf @ 140'

Perf @ 300'

12-1/4" hole @ 1125'
8-5/8" csg @ 1125'
w/ 775sx-TOC-Surf-Circ

7-7/8" hole @ 5350'
5-1/2" csg @ 5350'
w/ 1700sx-TOC-Surf-Circ

Perfs @ 5122-5214'

TD-5350'

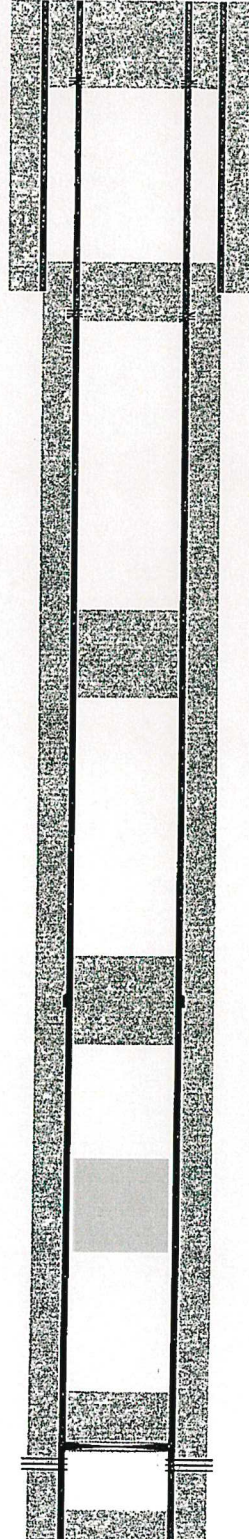
C E LAMUNYON 84

VI. Exhibit C35

API# 30-025-36277
545 FNL 1169 FEL,
Sec 28, T23S, R37E Lea Co., NM

C.E. LaMunyon #84
API No. 30-025-36277

110sx @ 300'-Surface



Perf @ 300'

12-1/4" hole @ 1112'
8-5/8" csg @ 1112'
w/ 650sx-TOC-Surf-Circ

50sx @ 1162 WOC-Tag
TOC = 992'

Perf @ 1162'

25sx @ 2550 WOC-Tag
TOC = 2207'

25 sx @ 3847-3532' WOC-Tag

25 sx @ 4991-4744' WOC-Tag

25sx @ 5435
1/10-CIBP @ 5435'
TOC = 5157'

7-7/8" hole @ 5700'
5-1/2" csg @ 5700'
DVT @ 3758'
1st w/ 475sx-TOC-3753'
2nd w/ 850sx-TOC-1130'-CBL
Perfs @ 5482-5502'

TD-5700'

VII. Proposed Injection Operation

1. Average injection rate target will be ~600 bpd. Maximum injection rate will be 1500 bpd. These numbers are based off of typical injection rates in nearby McKee injectors.
2. The system will be a closed system. The injection well will not be made available for commercial disposal purposes.
3. Average injection pressure will be ~1400 psi. Maximum injection pressure will be calculated relative to the depth of the highest perforation, using a factor of 0.25 psi/ft. The proposed injector will have perforation depths of approximately 9,185' and 9,524' (or 2,296 psi and 2,381 psi maximum injection pressure, respectively). Pending results of a step rate test, the maximum injection pressure could potentially be increased to a factor of 0.6 psi/ft (or 5,511 psi at 9,185' and 5,714 psi at 9,524').
4. The water source will be produced water from nearby wells and water transfer lines.
5. Injection will be into the McKee formation, which is currently productive in the area.

VIII. Geologic Data

The waterflood will be injecting into the Mckee Sand member of the Simpson Formation in the Teague-Simpson Pool. The portion that will be injected consists mainly of white to tan colored and fine to coarse grained sand. The reservoir quality rocks have porosities averaging 11% and permeabilities ranging from 0.1 to 400 millidarcies. Formation Tops Are:

Formation	Offset Top (C E LAMUNYON #76) 30-025-35074	Contents
Alluvium	GL	Fresh Water
Rustler	1040'	Anhydrite
Yates	2502'	Gas, Oil, & Water
Seven Rivers	2749'	Gas, Oil, & Water
Queen	3270'	Gas, Oil, & Water
Grayburg	3545'	Gas, Oil, & Water
San Andres	3790'	Gas, Oil, & Water
Glorieta	4965'	Gas, Oil, & Water
Paddock	5014'	Gas, Oil, & Water
Blinbry	5304'	Gas, Oil, & Water
Tubb	5940'	Gas, Oil, & Water
Drinkard	6251'	Gas, Oil, & Water
Abo	6463'	Gas, Oil, & Water
Devonian	7351'	Gas, Oil, & Water
Silurian	8198'	Dolomite/Chert
Montoya	8521'	Dolomite/Chert
Simpson	8806'	Gas, Oil, & Water
McKee	9135'	Gas, Oil, & Water
<i>McKee Injection Interval</i>	<i>9190'-9730'</i>	<i>Fine to coarse grained sands interbedded with green shale and shaley sand.</i>
Ellenburger	9650'	Gas, Oil, & Water
Total Depth	9800'	

IX. Proposed Stimulation Program

The injectors will be acidized with 1,000 gal 15% HCl for each set of perforations. 15% HCl acid in the McKee Sand is known to break down the perfs and cause injection at lower pressures vs perforating alone. The injectors will not be sand frac'd so there will be better vertical conformance.

X. Logging and Test Data for Wells

The C E LAMUNYON #77, C E LAMUNYON #73, C E LAMUNYON #74, C E LAMUNYON #75, C E LAMUNYON #76, C E LAMUNYON #71Y, C E LAMUNYON #80, and C E LAMUNYON #81 will be converted to injectors. The well logs for these wells have been submitted to the NMOCD previously except for the C E LAMUNYON #77.

Test Data for the above mentioned wells is as follows:

C E LAMUNYON #77

Date: 05/2/2001

Perf Interval: 9402'-28' (2 SPF)

Method: Perf and Acidize w/ 1500 gal 7-1/2% acid and Frac w/101,000# 20/40 sand.

Result: 354 BO, 120 MCF, & 37 BW in 24hrs.

C E LAMUNYON #73

Date: 9/9/2001

Perf Interval: 9418'-36' (2 SPF)

Method: Perf and Acidize w/ 2000 gal 15% acid and Frac w/107,000# 16/30 Super DC & 6500# 100 mesh sand.

Result: 149 BO, 185 MCF, & 54 BW in 24hrs.

C E LAMUNYON #74

Date: 12/10/2000

Perf Interval: 9340'-62' (2 SPF)

Method: Perf and Acidize w/ 1000 gal 15% acid & Frac w/150,000# 16/30 sand.

Result: 124 BO, 91 MCF, & 42 BW in 24hrs.

C E LAMUNYON #75

Date: 3/25/2001

Perf Interval: 9365'-85' (2 SPF)

Method: Perf and Acidize w/ 1000 gal 15% acid & Frac w/6620# 100 mesh sand and 119,660# super sand.

Result: 124 BO, 91 MCF, & 42 BW in 24hrs.

C E LAMUNYON #76

Date: 11/26/2000

Perf Interval: 9717'-30', 9652'-80', & 9320'-40' (2 SPF)

Method: Perf and Acidize 9717'-30' w/500 gal 15% acid, 9652'-80' w/1000 gal 15% acid, & 9320'-40' w/1000 gal 15% acid. Frac w/150,000# 16/30 sand.

Result: 364 BO, 168 MCF, & 20 BW in 24hrs.

C E LAMUNYON #71Y

Date: 10/4/2000

Perf Interval: 9356'-76' (2 SPF)

Method: Perf and Acidize w/4000 gal 15% HCL & Frac w/150,000# 16/30 sand.

Result: 372 BO, 226 MCF, & 90 BW in 24hrs.

X. Logging and Test Data for Wells

Test Data is continued as follows:

C E LAMUNYON #80

Date: 6/17/2003

Perf Interval: 9442'-62' (2 SPF)

Method: Perf and Acidize w/1000 gal 15% acid & Frac w/93,975# 16/30 Super DC and 4000# 100 mesh sand.

Result: 50 BO, 130 MCF, & 370 BW in 24hrs.

C E LAMUNYON #81

Date: 5/11/2003

Perf Interval: 9400'-20' (2 SPF)

Method: Perf and Acidize w/1000 gal 15% acid & Frac w/108,840# Super HS 20/40 sand.

Result: 60 BO, 156 MCF, & 140 BW in 24hrs.