

**STATE OF NEW MEXICO
ENERGY, MINERALS AND NATURAL RESOURCES DEPARTMENT
OIL CONSERVATION DIVISION**

**APPLICATIONS OF MEWBOURNE OIL COMPANY
FOR COMPULSORY POOLING, EDDY COUNTY,
EDDY MEXICO.**

Case Nos. 22235 - 22240

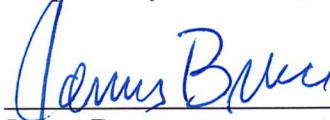
NOTICE OF FILING ADDITIONAL EXHIBITS

Mewbourne Oil Company hereby submits for filing the additional exhibits in the above cases.

Exhibit 10: In Case No. 22240, which is a proximity tract application, the C-102 for the Desert Eagle 1/2 WOPM Fed. Com. Well No. 1 contained incorrect take points. This exhibit is a corrected C-102, which reflects the same footages as contained in the well proposal and the AFE.

Exhibit 11: At the original hearing in these matters, the Division requested cross-sections which could be expanded on the computer. I received the attached exhibits, and e-mailed them to the Division for easy access. These are being filed online at the request of the Division.

Respectfully submitted,



James Bruce
Post Office Box 1056
Santa Fe, New Mexico 87504
(505) 982-2043
jamesbruc@aol.com

Attorney for Mewbourne Oil Company

District I
1625 N. French Dr., Hobbs, NM 88240
Phone: (575) 393-6161 Fax: (575) 393-0720
District II
811 S. First St., Artesia, NM 88210
Phone: (575) 748-1283 Fax: (575) 748-9720
District III
1000 Rio Brazos Road, Aztec, NM 87410
Phone: (505) 334-6178 Fax: (505) 334-6170
District IV
1220 S. St. Francis Dr., Santa Fe, NM 87505
Phone: (505) 476-3460 Fax: (505) 476-3462

State of New Mexico
Energy, Minerals & Natural Resources Department
OIL CONSERVATION DIVISION
1220 South St. Francis Dr.
Santa Fe, NM 87505

Form C-102
Revised August 1, 2011
Submit one copy to appropriate
District Office

AMENDED REPORT

WELL LOCATION AND ACREAGE DEDICATION PLAT

| | | | | | | | | | |
|---|---------------------|---|---------------------|-----------------------|------------------------------|----------------------------------|-----------------------------|-------------------------------|-----------------------|
| 1 API Number | | 2 Pool Code | | 3 Pool Name | | | | | |
| 4 Property Code | | 5 Property Name DESERT EAGLE 1/2 WOPM FED COM | | | | | | 6 Well Number 1H | |
| 7 GRID NO. | | 8 Operator Name MEWBOURNE OIL COMPANY | | | | | | 9 Elevation 3284' | |
| 10 Surface Location | | | | | | | | | |
| UL or lot no. P | Section 1 | Township 20S | Range 28E | Lot Idn | Feet from the 1230 | North/South line SOUTH | Feet From the 205 | East/West line EAST | County EDDY |
| 11 Bottom Hole Location If Different From Surface | | | | | | | | | |
| UL or lot no. M | Section 2 | Township 20S | Range 28E | Lot Idn | Feet from the 1310 | North/South line SOUTH | Feet from the 100 | East/West line WEST | County EDDY |
| 12 Dedicated Acres | | 13 Joint or Infill | | 14 Consolidation Code | | 15 Order No. | | | |

No allowable will be assigned to this completion until all interest have been consolidated or a non-standard unit has been approved by the division.

CORNER DATA
NAD 83 GRID - NM EAST

G: FOUND BRASS CAP "1916"
N: 585767.2 - E: 606452.8

A: FOUND BRASS CAP "1942"
N: 580433.9 - E: 595824.8

H: FOUND BRASS CAP "1916"
N: 583112.1 - E: 606467.2

B: FOUND BRASS CAP "1942"
N: 583084.8 - E: 595826.9

I: FOUND BRASS CAP "1916"
N: 580470.7 - E: 606464.6

C: FOUND BRASS CAP "1942"
N: 585701.1 - E: 595828.6

J: FOUND BRASS CAP "1942"
N: 580461.9 - E: 603798.9

D: FOUND BRASS CAP "1942"
N: 585717.5 - E: 598482.2

K: FOUND BRASS CAP "1942"
N: 580454.6 - E: 601133.7

E: FOUND BRASS CAP "1941"
N: 585733.7 - E: 601140.1

L: FOUND BRASS CAP "1942"
N: 580444.0 - E: 598479.0

F: FOUND BRASS CAP "1941"
N: 585750.5 - E: 603795.4

M: FOUND BRASS CAP "1942"
N: 583106.0 - E: 601136.9

17 OPERATOR CERTIFICATION
I hereby certify that the information contained herein is true and complete to the best of my knowledge and belief, and that this organization either owns a working interest or unleased mineral interest in the land including

EXHIBIT 10

Signature _____ Date _____

Printed Name _____

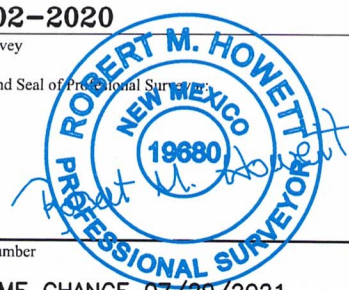
E-mail Address _____

18 SURVEYOR CERTIFICATION
I hereby certify that the well location shown on this plat was plotted from field notes of actual surveys made by me or under my supervision, and that the same is true and correct to the best of my belief.

11-02-2020

Date of Survey

Signature and Seal of Professional Surveyor



19680

Certificate Number

REV: NAME CHANGE 07/29/2021

16

S 89°38'48" W 2654.24' (D) S 89°39'00" W 2658.57' (E) S 89°38'20" W 2656.03' (F) S 89°38'20" W 2658.09' (G)

| | | | | | | | |
|--------------------|--------------------|--------------------|--------------------|--------------------|--------------------|--------------------|--------------------|
| LOT 4 Ac. 39.04 | LOT 3 Ac. 39.11 | LOT 2 Ac. 39.19 | LOT 1 Ac. 39.26 | LOT 4 Ac. 39.39 | LOT 3 Ac. 39.56 | LOT 2 Ac. 39.74 | LOT 1 Ac. 39.91 |
|--------------------|--------------------|--------------------|--------------------|--------------------|--------------------|--------------------|--------------------|

NAD 83 GRID - NM EAST

BOTTOM HOLE
N: 580834.2 - E: 595925.1
LAT: 32.5966409° N
LONG: 104.1560803° W

SURFACE LOCATION
N: 581699.7 - E: 606260.9
LAT: 32.5989682° N
LONG: 104.1225132° W

S 89°46'55" W 2654.84' (L) S 89°46'13" W 2655.40' (K) S 89°50'34" W 2665.81' (J) S 89°48'47" W 2666.42' (I)

Job No: LS20100621R

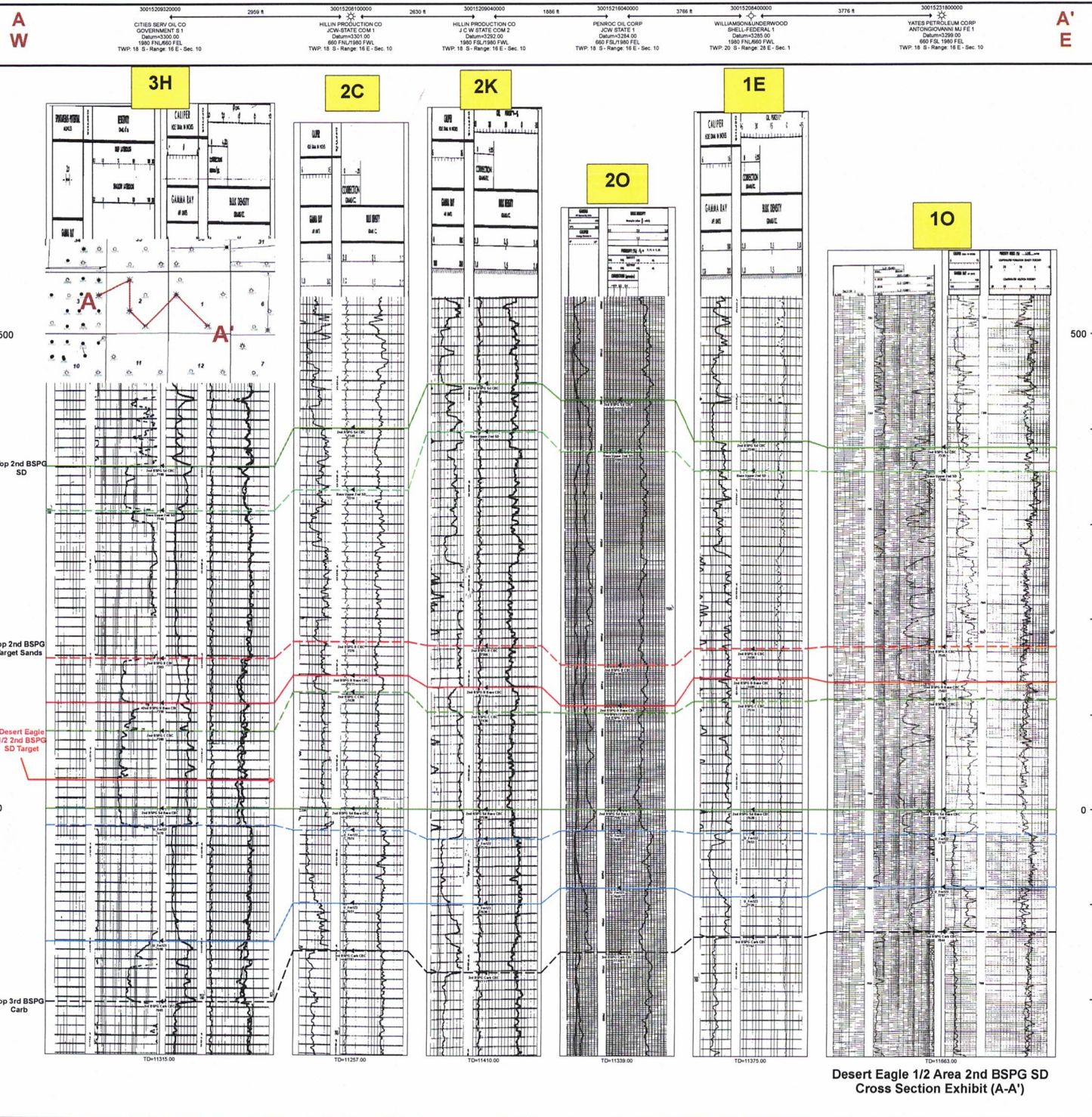


EXHIBIT 71

