

**STATE OF NEW MEXICO  
ENERGY, MINERALS AND NATURAL RESOURCES DEPARTMENT  
OIL CONSERVATION DIVISION**

**APPLICATIONS OF CAZA OIL PETROLEUM, LLC  
FOR COMPULSORY POOLING, LEA COUNTY,  
NEW MEXICO.**

**Case Nos. 22042 and 22044**

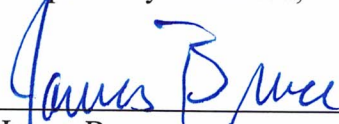
**NOTICE OF FILING ADDITIONAL EXHIBITS**

Caza Petroleum, LLC (“Caza”) hereby submits the following exhibits in the above case, which was heard on February 17, 2022:

A. In Case Nos. 22042 and 22044, the C-102s originally submitted for the wells reflected the former 330 foot setbacks for first and last take points, rather than the current 100 foot setbacks. Caza’s landman recently provided updated C-102s, and they are submitted as Exhibits A and B.

B. The pooling checklists in the above cases, reflecting the new C-102s, are submitted as Exhibit 6 (revised).

Respectfully submitted,



---

James Bruce  
Post Office Box 1056  
Santa Fe, New Mexico 87504  
(505) 982-2043  
[jamesbruc@aol.com](mailto:jamesbruc@aol.com)

District I  
1625 N. French Dr., Hobbs, NM 88240  
Phone: (575) 393-6161 Fax: (575) 393-0720  
District II  
811 S. First St., Artesia, NM 88210  
Phone: (575) 748-1283 Fax: (575) 748-9720  
District III  
1000 Rio Brazos Road, Aztec, NM 87410  
Phone: (505) 334-6178 Fax: (505) 334-6170  
District IV  
1220 S. St. Francis Dr., Santa Fe, NM 87505  
Phone: (505) 476-3460 Fax: (505) 476-3462

State of New Mexico  
Energy, Minerals & Natural Resources Department  
OIL CONSERVATION DIVISION  
1220 South St. Francis Dr.  
Santa Fe, NM 87505

Form C-102  
Revised August 1, 2011  
Submit one copy to appropriate  
District Office

AMENDED REPORT

WELL LOCATION AND ACREAGE DEDICATION PLAT

<sup>1</sup> API Number	<sup>2</sup> Pool Code 24250	<sup>3</sup> Pool Name FEATHERSTONE; BONE SPRING
<sup>4</sup> Property Code	<sup>5</sup> Property Name DESERT ROSE 17-8 FEDERAL	
<sup>7</sup> OGRID No. 249099	<sup>8</sup> Operator Name CAZA OPERATING, LLC	<sup>6</sup> Well Number 10H <sup>9</sup> Elevation 3701'

<sup>10</sup> Surface Location

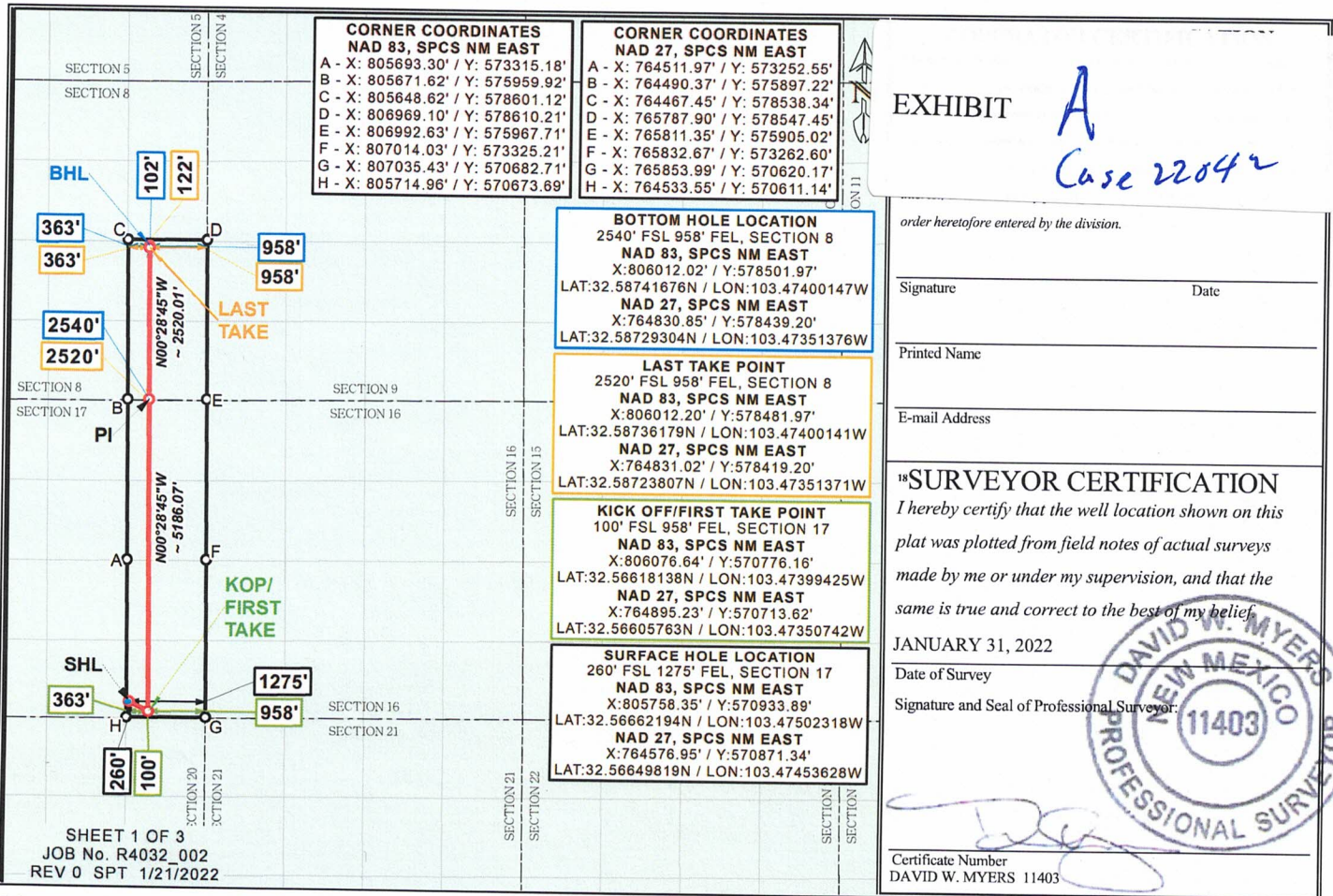
UL or lot no.	Section	Township	Range	Lot Idn	Feet from the	North/South line	Feet from the	East/West line	County
P	17	20S	35E		260	SOUTH	1275	EAST	LEA

<sup>11</sup> Bottom Hole Location If Different From Surface

UL or lot no.	Section	Township	Range	Lot Idn	Feet from the	North/South line	Feet from the	East/West line	County
I	8	20S	35E		2540	SOUTH	958	EAST	LEA

<sup>12</sup> Dedicated Acres 240.0	<sup>13</sup> Joint or Infill	<sup>14</sup> Consolidation Code	<sup>15</sup> Order No.
--	-------------------------------	----------------------------------	-------------------------

No allowable will be assigned to this completion until all interests have been consolidated or a non-standard unit has been approved by the division.



Distances/areas relative to NAD 83 Combined Scale Factor: 0.99981205 Convergence Angle: 00°26'57.22001"

Horizontal Spacing Unit

District I  
1625 N. French Dr., Hobbs, NM 88240  
Phone: (575) 393-6161 Fax: (575) 393-0720  
District II  
811 S. First St., Artesia, NM 88210  
Phone: (575) 748-1283 Fax: (575) 748-9720  
District III  
1000 Rio Brazos Road, Aztec, NM 87410  
Phone: (505) 334-6178 Fax: (505) 334-6170  
District IV  
1220 S. St. Francis Dr., Santa Fe, NM 87505  
Phone: (505) 476-3460 Fax: (505) 476-3462

State of New Mexico  
Energy, Minerals & Natural Resources Department  
OIL CONSERVATION DIVISION  
1220 South St. Francis Dr.  
Santa Fe, NM 87505

Form C-102  
Revised August 1, 2011  
Submit one copy to appropriate  
District Office

AMENDED REPORT

WELL LOCATION AND ACREAGE DEDICATION PLAT

<sup>1</sup> API Number		<sup>2</sup> Pool Code 24250		<sup>3</sup> Pool Name FEATHERSTONE; BONE SPRING	
<sup>4</sup> Property Code		<sup>5</sup> Property Name DESERT ROSE 17-8 FEDERAL			<sup>6</sup> Well Number 8H
<sup>7</sup> OGRID No. 249099		<sup>8</sup> Operator Name CAZA OPERATING, LLC			<sup>9</sup> Elevation 3700'

<sup>10</sup> Surface Location

UL or lot no.	Section	Township	Range	Lot Idn	Feet from the	North/South line	Feet from the	East/West line	County
P	17	20S	35E		260	SOUTH	1245	EAST	LEA

<sup>11</sup> Bottom Hole Location If Different From Surface

UL or lot no.	Section	Township	Range	Lot Idn	Feet from the	North/South line	Feet from the	East/West line	County
I	8	20S	35E		2540	SOUTH	360	EAST	LEA

<sup>12</sup> Dedicated Acres 240.0	<sup>13</sup> Joint or Infill	<sup>14</sup> Consolidation Code	<sup>15</sup> Order No.
--	-------------------------------	----------------------------------	-------------------------

No allowable will be assigned to this completion until all interests have been consolidated or a non-standard unit has been approved by the division.

**CORNER COORDINATES NAD 83, SPCS NM EAST**

A - X: 805693.30' / Y: 573315.18'
B - X: 805671.62' / Y: 575959.92'
C - X: 805648.62' / Y: 578601.12'
D - X: 806969.10' / Y: 578610.21'
E - X: 806992.63' / Y: 575967.71'
F - X: 807014.03' / Y: 573325.21'
G - X: 807035.43' / Y: 570682.71'
H - X: 805714.96' / Y: 570673.69'

**CORNER COORDINATES NAD 27, SPCS NM EAST**

A - X: 764511.97' / Y: 573252.55'
B - X: 764490.37' / Y: 575897.22'
C - X: 764467.45' / Y: 578538.34'
D - X: 765787.90' / Y: 578547.45'
E - X: 765811.35' / Y: 575905.02'
F - X: 765832.67' / Y: 573262.60'
G - X: 765853.99' / Y: 570620.17'
H - X: 764533.55' / Y: 570611.14'

**BOTTOM HOLE LOCATION**  
2540' FSL 360' FEL, SECTION 8  
NAD 83, SPCS NM EAST  
X: 806610.02' / Y: 578505.50'  
LAT: 32.58741316N / LON: 103.47206003W  
NAD 27, SPCS NM EAST  
X: 765428.83' / Y: 578442.73'  
LAT: 32.58728945N / LON: 103.47157241W

**LAST TAKE POINT**  
2520' FSL 360' FEL, SECTION 8  
NAD 83, SPCS NM EAST  
X: 806610.19' / Y: 578485.50'  
LAT: 32.58735819N / LON: 103.47205998W  
NAD 27, SPCS NM EAST  
X: 765429.00' / Y: 578422.73'  
LAT: 32.58723448N / LON: 103.47157236W

**KICK OFF/FIRST TAKE POINT**  
100' FSL 360' FEL, SECTION 17  
NAD 83, SPCS NM EAST  
X: 806674.63' / Y: 570780.25'  
LAT: 32.56617932N / LON: 103.47205327W  
NAD 27, SPCS NM EAST  
X: 765493.20' / Y: 570717.71'  
LAT: 32.56605558N / LON: 103.47156654W

**SURFACE HOLE LOCATION**  
260' FSL 1245' FEL, SECTION 17  
NAD 83, SPCS NM EAST  
X: 805788.35' / Y: 570933.89'  
LAT: 32.56662127N / LON: 103.47492581W  
NAD 27, SPCS NM EAST  
X: 764606.95' / Y: 570871.34'  
LAT: 32.56649753N / LON: 103.47443892W

**<sup>17</sup> OPERATOR CERTIFICATION**

I hereby certify that the information contained herein is true and complete to the best of my knowledge and belief, and that this organization either owns a working interest or unleased mineral interest in the land including the proposed bottom hole location or has a right to drill this well at this location pursuant to a contract with an owner of such a mineral or working interest, or to a voluntary pooling agreement or a compulsory pooling order heretofore entered by the division.

Signature \_\_\_\_\_ Date \_\_\_\_\_

Printed Name \_\_\_\_\_

E-mail Address \_\_\_\_\_

**<sup>18</sup> SURVEYOR CERTIFICATION**

I hereby certify that the well location shown on this plat was plotted from field notes of actual surveys made by me or under my supervision, and that the same is true and correct to the best of my belief.

JANUARY 31, 2022  
Date of Survey

Signature and Seal of Professional Surveyor:

Certificate Number  
DAVID W. MYERS 11403

Distances/areas relative to NAD 83 Combined Scale Factor: 0.99981205 Convergence Angle: 00°26'57.22001"

Horizontal Spacing Unit

District I  
1625 N. French Dr., Hobbs, NM 88240  
Phone: (575) 393-6161 Fax: (575) 393-0720  
District II  
811 S. First St., Artesia, NM 88210  
Phone: (575) 748-1283 Fax: (575) 748-9720  
District III  
1000 Rio Brazos Road, Aztec, NM 87410  
Phone: (505) 334-6178 Fax: (505) 334-6170  
District IV  
1220 S. St. Francis Dr., Santa Fe, NM 87505  
Phone: (505) 476-3460 Fax: (505) 476-3462

State of New Mexico  
Energy, Minerals & Natural Resources Department  
OIL CONSERVATION DIVISION  
1220 South St. Francis Dr.  
Santa Fe, NM 87505

Form C-102  
Revised August 1, 2011  
Submit one copy to appropriate  
District Office

AMENDED REPORT

WELL LOCATION AND ACREAGE DEDICATION PLAT

<sup>1</sup> API Number	<sup>2</sup> Pool Code 24250	<sup>3</sup> Pool Name FEATHERSTONE; BONE SPRING
<sup>4</sup> Property Code	<sup>5</sup> Property Name DESERT ROSE 17-8 FEDERAL	
<sup>7</sup> OGRID No. 249099	<sup>8</sup> Operator Name CAZA OPERATING, LLC	<sup>6</sup> Well Number 5H <sup>9</sup> Elevation 3700'

<sup>10</sup> Surface Location

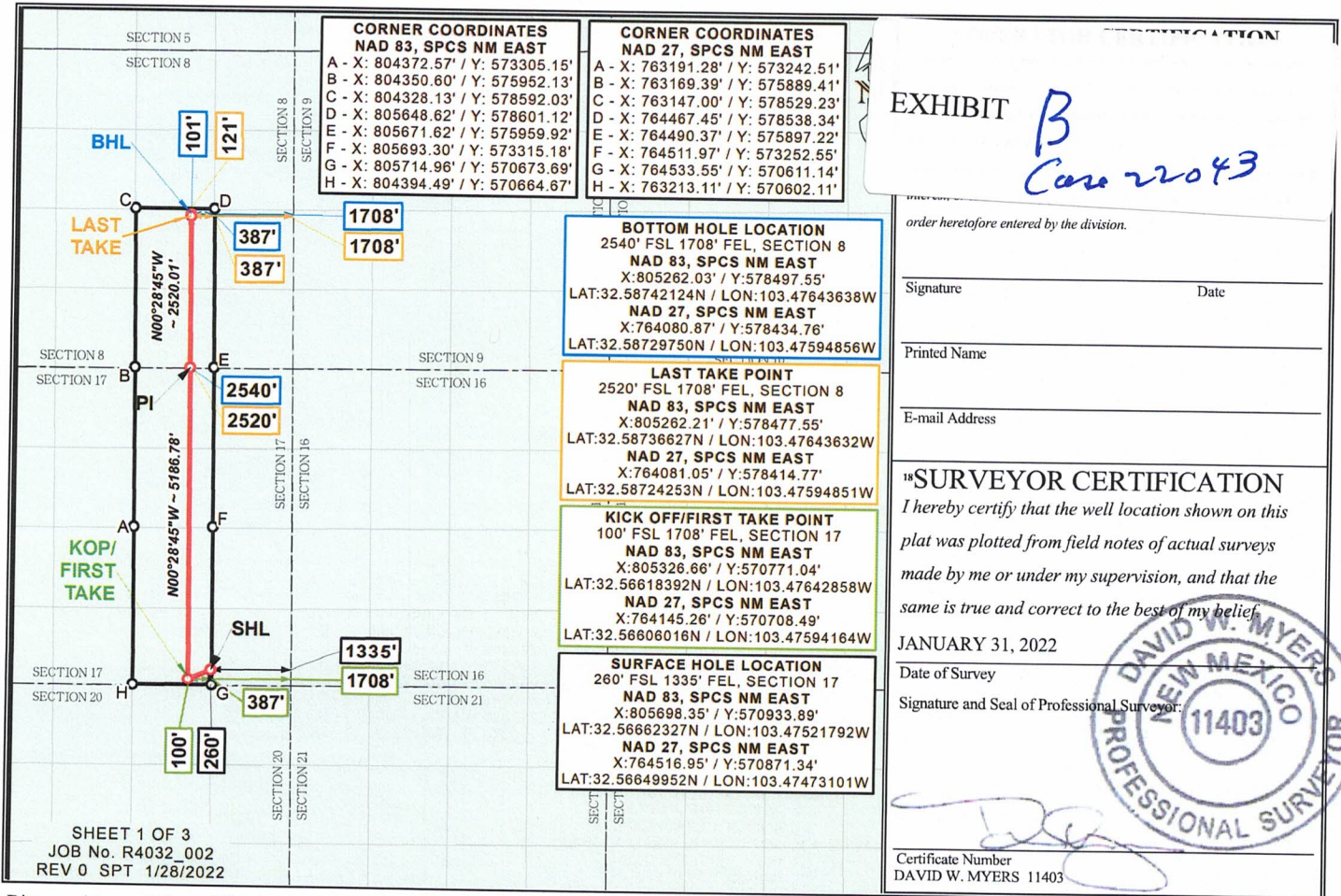
UL or lot no.	Section	Township	Range	Lot Idn	Feet from the	North/South line	Feet from the	East/West line	County
O	17	20S	35E		260	SOUTH	1335	EAST	LEA

<sup>11</sup> Bottom Hole Location If Different From Surface

UL or lot no.	Section	Township	Range	Lot Idn	Feet from the	North/South line	Feet from the	East/West line	County
J	8	20S	35E		2540	SOUTH	1708	EAST	LEA

<sup>12</sup> Dedicated Acres 240.0	<sup>13</sup> Joint or Infill	<sup>14</sup> Consolidation Code	<sup>15</sup> Order No.
--	-------------------------------	----------------------------------	-------------------------

No allowable will be assigned to this completion until all interests have been consolidated or a non-standard unit has been approved by the division.



District I  
1625 N. French Dr., Hobbs, NM 88240  
Phone: (575) 393-6161 Fax: (575) 393-0720  
District II  
811 S. First St., Artesia, NM 88210  
Phone: (575) 748-1283 Fax: (575) 748-9720  
District III  
1000 Rio Brazos Road, Aztec, NM 87410  
Phone: (505) 334-6178 Fax: (505) 334-6170  
District IV  
1220 S. St. Francis Dr., Santa Fe, NM 87505  
Phone: (505) 476-3460 Fax: (505) 476-3462

State of New Mexico  
Energy, Minerals & Natural Resources Department  
OIL CONSERVATION DIVISION  
1220 South St. Francis Dr.  
Santa Fe, NM 87505

Form C-102  
Revised August 1, 2011  
Submit one copy to appropriate  
District Office

AMENDED REPORT

WELL LOCATION AND ACREAGE DEDICATION PLAT

<sup>1</sup> API Number	<sup>2</sup> Pool Code	<sup>3</sup> Pool Name
	24250	FEATHERSTONE; BONE SPRING
<sup>4</sup> Property Code	<sup>5</sup> Property Name	
	DESERT ROSE 17-8 FEDERAL	
<sup>7</sup> OGRID No.	<sup>8</sup> Operator Name	<sup>6</sup> Well Number
249099	CAZA OPERATING, LLC	7H
		<sup>9</sup> Elevation
		3699'

<sup>10</sup> Surface Location

UL or lot no.	Section	Township	Range	Lot Idn	Feet from the	North/South line	Feet from the	East/West line	County
O	17	20S	35E		261	SOUTH	1365	EAST	LEA

<sup>11</sup> Bottom Hole Location If Different From Surface

UL or lot no.	Section	Township	Range	Lot Idn	Feet from the	North/South line	Feet from the	East/West line	County
J	8	20S	35E		2540	SOUTH	2275	EAST	LEA

<sup>12</sup> Dedicated Acres	<sup>13</sup> Joint or Infill	<sup>14</sup> Consolidation Code	<sup>15</sup> Order No.
240.0			

No allowable will be assigned to this completion until all interests have been consolidated or a non-standard unit has been approved by the division.

**17 OPERATOR CERTIFICATION**

*I hereby certify that the information contained herein is true and complete to the best of my knowledge and belief, and that this organization either owns a working interest or unleased mineral interest in the land including the proposed bottom hole location or has a right to drill this well at this location pursuant to a contract with an owner of such a mineral or working interest, or to a voluntary pooling agreement or a compulsory pooling order heretofore entered by the division.*

Signature \_\_\_\_\_ Date \_\_\_\_\_

Printed Name \_\_\_\_\_

E-mail Address \_\_\_\_\_

**18 SURVEYOR CERTIFICATION**

*I hereby certify that the well location shown on this plat was plotted from field notes of actual surveys made by me or under my supervision, and that the same is true and correct to the best of my belief.*

JANUARY 31, 2022

Date of Survey \_\_\_\_\_

Signature and Seal of Professional Surveyor:

Certificate Number  
DAVID W. MYERS 11403

Distances/areas relative to NAD 83 Combined Scale Factor: 0.99981205 Convergence Angle: 00°26'57.22001"

Horizontal Spacing Unit

**COMPULSORY POOLING APPLICATION CHECKLIST****ALL INFORMATION IN THE APPLICATION MUST BE SUPPORTED BY SIGNED AFFIDAVITS**

<b>Case:</b>	<b>22042</b>
<b>Date</b>	<b>February 17, 2022</b>
Applicant	Caza Petroleum, LLC
Designated Operator & OGRID (affiliation if applicable)	Caza Operating, LLC/OGRID No. 249099
Applicant's Counsel:	James Bruce
Case Title:	Application of Caza Petroleum, LLC for Compulsory Pooling, Lea County, New Mexico
Entries of Appearance/Intervenors:	
Well Family	Desert Rose Wells
<b>Formation/Pool</b>	
Formation Name(s) or Vertical Extent:	Bone Spring Formation
Primary Product (Oil or Gas):	Oil
Pooling this vertical extent:	Entire Bone Spring formation
Pool Name and Pool Code:	Featherstone; Bone Spring/Pool Code 24250
Well Location Setback Rules:	Statewide rules and current horizontal well rules
Spacing Unit Size:	Quarter-quarter Section/40 acre
<b>Spacing Unit</b>	
Type (Horizontal/Vertical)	Vertical
Size (Acres)	240 acres
Building Blocks:	40 acres
Orientation:	South-North
Description: TRS/County	E/2SE/4 §8 and E/2E/2 §17-20S-35E, NMPM, Lea County
Standard Horizontal Well Spacing Unit (Y/N), If No, describe	Yes
<b>Other Situations</b>	
Depth Severance: Y/N. If yes, description	No
Proximity Tracts: If yes, description	Yes
Proximity Defining Well: if yes, description	
Applicant's Ownership in Each Tract	Exhibit 2-C
<b>Well(s)</b>	
Name & API (if assigned), surface and bottom hole location, footages, completion target, orientation, completion status (standard or non- standard)	Desert Rose Fed. Com. Well No. 8H API No. 30-025-47759 SHL: 260 FSL & 1245 FEL §17 BHL: 2540 FSL & 360 FEL §8 FTP: 100 FSL & 360 FEL §17 LTP: 2520 FSL & 360 FEL §8 Third Bone Spring/TVD 11534 feet/MD 19230 feet

EXHIBIT

6  
(Revised)

	Desert Rose Fed. Com. Well No. 10H API No. 30-025-47330 SHL: 260 FSL & 1275 FEL §17 BHL: 2540 FSL & 958 FEL §8 FTP: 100 FSL & 958 FEL §17 LTP: 2520 FSL & 958 FEL §8 Second Bone Spring/TVD 11534 feet/MD 19230 feet
Horizontal Well First and Last Take Points	See above
Completion Target (Formation, TVD and MD)	See above
<b>AFE Capex and Operating Costs</b>	
Drilling Supervision/Month \$	\$7500
Production Supervision/Month \$	\$750
Justification for Supervision Costs	Exhibit 2, page 2
Requested Risk Charge	Cost + 200%/Exhibit 2, page 2
<b>Notice of Hearing</b>	
Proposed Notice of Hearing	Exhibit 1
Proof of Mailed Notice of Hearing (20 days before hearing)	Exhibit 4
Proof of Published Notice of Hearing (10 days before hearing)	Exhibit 5
<b>Ownership Determination</b>	
Land Ownership Schematic of the Spacing Unit	2-C
Tract List (including lease numbers and owners)	Exhibit 2-C
Pooled Parties (including ownership type)	Exhibit 2-C
Unlocatable Parties to be Pooled	
Ownership Depth Severance (including percentage above & below)	None
<b>Joinder</b>	
Sample Copy of Proposal Letter	Exhibit 2-D
List of Interest Owners ( <i>i.e.</i> Exhibit A of JOA)	Exhibit 2-C
Chronology of Contact with Non-Joined Working Interests	Exhibit 2
Overhead Rates In Proposal Letter	
Cost Estimate to Drill and Complete	Exhibit 2-E
Cost Estimate to Equip Well	Exhibit 2-E
Cost Estimate for Production Facilities	Exhibit 2-E
<b>Geology</b>	
Summary (including special considerations)	Exhibit 3
Spacing Unit Schematic	Exhibits 2-A and 3-A
Gunbarrel/Lateral Trajectory Schematic	Exhibit 3-A-C
Well Orientation (with rationale)	Standup/Exhibit 3
Target Formation	Bone Spring

HSD Cross Section	Exhibit 3-C
Depth Severance Discussion	Not Applicable
<b>Forms, Figures and Tables</b>	
C-102	Exhibits 2-A and 2-B
Tracts	
Summary of Interests, Unit Recapitulation (Tracts)	Exhibit 2-C
General Location Map (including basin)	Exhibit 3-A
Well Bore Location Map	Exhibits 2-A and 2-B
Structure Contour Map - Subsea Depth	Exhibit 3-A
Cross Section Location Map (including wells)	Exhibit 3-A
Cross Section (including Landing Zone)	Exhibit 3-C
<b>Additional Information</b>	
<b>CERTIFICATION: I hereby certify that the information provided in this checklist is complete and accurate.</b>	
<b>Printed Name</b> (Attorney or Party Representative):	James Bruce
<b>Signed Name</b> (Attorney or Party Representative):	<i>James Bruce</i>
<b>Date:</b>	February 15, 2022

*Effective*



**COMPULSORY POOLING APPLICATION CHECKLIST****ALL INFORMATION IN THE APPLICATION MUST BE SUPPORTED BY SIGNED AFFIDAVITS**

<b>Case:</b>	<b>22044</b>
<b>Date</b>	<b>February 17, 2022</b>
Applicant	Caza Petroleum, LLC
Designated Operator & OGRID (affiliation if applicable)	Caza Operating, LLC/OGRID No. 249099
Applicant's Counsel:	James Bruce
Case Title:	Application of Caza Petroleum, LLC for Compulsory Pooling, Lea County, New Mexico
Entries of Appearance/Intervenors:	
Well Family	Desert Rose Wells
<b>Formation/Pool</b>	
Formation Name(s) or Vertical Extent:	Bone Spring Formation
Primary Product (Oil or Gas):	Oil
Pooling this vertical extent:	Entire Bone Spring formation
Pool Name and Pool Code:	Featherstone; Bone Spring/Pool Code 24250
Well Location Setback Rules:	Statewide rules and current horizontal well rules
Spacing Unit Size:	Quarter-quarter Section/40 acre
<b>Spacing Unit</b>	
Type (Horizontal/Vertical)	Vertical
Size (Acres)	240 acres
Building Blocks:	40 acres
Orientation:	South-North
Description: TRS/County	W/2SE/4 §8 and W/2E/2 §17-20S-35E, NMPM, Lea County
Standard Horizontal Well Spacing Unit (Y/N), If No, describe	Yes
<b>Other Situations</b>	
Depth Severance: Y/N. If yes, description	No
Proximity Tracts: If yes, description	Yes
Proximity Defining Well: if yes, description	
Applicant's Ownership in Each Tract	Exhibit 2-C
<b>Well(s)</b>	
Name & API (if assigned), surface and bottom hole location, footages, completion target, orientation, completion status (standard or non- standard)	Desert Rose Fed. Com. Well No. 5H API No. 30-025-Pendong SHL: 260 FSL & 1335 FEL §17 BHL: 2540 FSL & 1708 FEL §8 FTP: 100 FSL & 1708 §17 LTP: 2520 FSL & 1708 FEL §8 Third Bone Spring/TVD 11534 feet/MD 19230 feet

EXHIBIT

6  
(Revised)

	Desert Rose Fed. Com. Well No. 7H API No. 30-025-Pending SHL: 261 FSL & 1365 FEL §17 BHL: 2540 FSL & 2275 FEL §8 FTP: 100 FSL & 2275 FEL §17 LTP: 2520 FSL & 2275 FEL §8 Second Bone Spring/TVD 11534 feet/MD 19230 feet
Horizontal Well First and Last Take Points	See above
Completion Target (Formation, TVD and MD)	See above
<b>AFE Capex and Operating Costs</b>	
Drilling Supervision/Month \$	\$7500
Production Supervision/Month \$	\$750
Justification for Supervision Costs	Exhibit 2, page 2
Requested Risk Charge	Cost + 200%/Exhibit 2, page 2
<b>Notice of Hearing</b>	
Proposed Notice of Hearing	Exhibit 1
Proof of Mailed Notice of Hearing (20 days before hearing)	Exhibit 4
Proof of Published Notice of Hearing (10 days before hearing)	Exhibit 5
<b>Ownership Determination</b>	
Land Ownership Schematic of the Spacing Unit	2-C
Tract List (including lease numbers and owners)	Exhibit 2-C
Pooled Parties (including ownership type)	Exhibit 2-C
Unlocatable Parties to be Pooled	
Ownership Depth Severance (including percentage above & below)	None
<b>Joinder</b>	
Sample Copy of Proposal Letter	Exhibit 2-D
List of Interest Owners ( <i>i.e.</i> Exhibit A of JOA)	Exhibit 2-C
Chronology of Contact with Non-Joined Working Interests	Exhibit 2
Overhead Rates In Proposal Letter	
Cost Estimate to Drill and Complete	Exhibit 2-E
Cost Estimate to Equip Well	Exhibit 2-E
Cost Estimate for Production Facilities	Exhibit 2-E
<b>Geology</b>	
Summary (including special considerations)	Exhibit 3
Spacing Unit Schematic	Exhibits 2-A and 3-A
Gunbarrel/Lateral Trajectory Schematic	Exhibit 3-A-C
Well Orientation (with rationale)	Standup/Exhibit 3
Target Formation	Bone Spring

Depth Severance Discussion	Exhibit 3-C
<b>Forms, Figures and Tables</b>	Not Applicable
C-102	Exhibits 2-A and 2-B
Tracts	
Summary of Interests, Unit Recapitulation (Tracts)	Exhibit 2-C
General Location Map (including basin)	Exhibit 3-A
Well Bore Location Map	Exhibits 2-A and 2-B
Structure Contour Map - Subsea Depth	Exhibit 3-A
Cross Section Location Map (including wells)	Exhibit 3-A
Cross Section (including Landing Zone)	Exhibit 3-C
<b>Additional Information</b>	
<b>CERTIFICATION: I hereby certify that the information provided in this checklist is complete and accurate.</b>	
<b>Printed Name</b> (Attorney or Party Representative):	James Bruce
<b>Signed Name</b> (Attorney or Party Representative):	<i>James Bruce</i>
<b>Date:</b>	February 15, 2022

*effective*