

**BEFORE THE OIL CONSERVATION DIVISION  
EXAMINER HEARING SEPTEMBER 15, 2022**

**CASE NOS. 22875 & 22876**

*BUBBA BURTON COM #111H & #121H WELLS  
KEN WILSON COM #112H & 122H WELLS*

**EDDY COUNTY, NEW MEXICO**



**STATE OF NEW MEXICO  
ENERGY, MINERALS AND NATURAL RESOURCES DEPARTMENT  
OIL CONSERVATION DIVISION**

**APPLICATION OF MATADOR PRODUCTION COMPANY TO AMEND ORDER R-21811 TO ADD AN ADDITIONAL POOLED PARTY, LEA COUNTY, NEW MEXICO.**

**CASE NO. 22875  
(formerly Case 22052)**

**APPLICATION OF MATADOR PRODUCTION COMPANY TO AMEND ORDER R-21812 TO ADD AN ADDITIONAL POOLED PARTY, LEA COUNTY, NEW MEXICO.**

**CASE NO. 22876  
(formerly Case 22053)**

**CONSOLIDATED HEARING PACKAGE  
TABLE OF CONTENTS**

- Filed Applications to Amend Order Nos. R-21811 and R-21812
- **Matador Exhibit A:** Affidavit of Rob Helbing, Landman
  - Matador Exhibit A-1: C-102s
  - Matador Exhibit A-2: Working Interest Ownership
  - Matador Exhibit A-3: Sample Well Proposal Letters with AFE
  - Matador Exhibit A-4: Chronology of Contacts
- **Matador Exhibit B:** Self-Affirmed Statement of Notice
- **Matador Exhibit C:** Affidavit of Publication for Each Case

**STATE OF NEW MEXICO  
ENERGY, MINERALS AND NATURAL RESOURCES DEPARTMENT  
OIL CONSERVATION DIVISION**

**APPLICATION OF MATADOR PRODUCTION  
COMPANY TO AMEND ORDER R-21811 TO  
ADD ADDITIONAL POOLED PARTIES, EDDY  
COUNTY, NEW MEXICO.**

**CASE NO. 22875  
(formerly Case 22052)**

**APPLICATION**

Matador Production Company (“Matador” or “Applicant”), through its undersigned attorneys, hereby files this application with the Oil Conservation Division to amend pooling Order R-21811 to add additional mineral owners to the pooling order. In support of its application, Matador states:

1. Matador Production Company (OGRID No. 228937) is the designated operator under Order R-21811 entered in Case No. 22052 on August 26, 2021.
2. Order R-21811 pooled uncommitted mineral interests in the Bone Spring formation [Malaga; Bone Spring Pool (42780)] underlying a standard 320-acre horizontal spacing unit comprised of the N/2 N/2 of Sections 14 and 15, Township 24 South, Range 28 East, NMPM, Eddy County, New Mexico.
3. This standard horizontal well spacing unit is currently dedicated to the **Bubba Burton Com #111H well** (API No. 30-015-48081) and the **Bubba Burton Com #121H well** (API No. 30-015-48082), both horizontally drilled from a surface location in the NE/4 NE/4 (Unit A) of Section 14 to a bottomhole location in the NW/4 NW/4 (Unit D) of Section 15.
4. Applicant has discovered additional mineral owners in the pooled acreage that were not subject to the pooling proceedings giving rise to Order R-21811.

5. Applicant has sought and been unable to obtain voluntary agreement for the development of these lands from these additional mineral owners.

WHEREFORE, Applicant requests that this application be set for hearing before an Examiner of the Oil Conservation Division on July 7, 2022, and, after notice and hearing as required by law, the Division enter an order placing these additional mineral owners under the terms of Order R-21811.

Respectfully submitted,

HOLLAND & HART LLP

By: 

Michael H. Feldewert  
Adam G. Rankin  
Julia Broggi  
Paula M. Vance  
Post Office Box 2208  
Santa Fe, NM 87504  
505-998-4421  
505-983-6043 Facsimile  
mfeldewert@hollandhart.com  
agrarkin@hollandhart.com  
jbroggi@hollandhart.com  
pmvance@hollandhart.com

**ATTORNEYS FOR MATADOR PRODUCTION  
COMPANY**

**STATE OF NEW MEXICO  
ENERGY, MINERALS AND NATURAL RESOURCES DEPARTMENT  
OIL CONSERVATION DIVISION**

**APPLICATION OF MATADOR PRODUCTION  
COMPANY TO AMEND ORDER R-21812 TO  
ADD ADDITIONAL POOLED PARTIES, EDDY  
COUNTY, NEW MEXICO.**

**CASE NO. 22876  
(formerly Case 22053)**

**APPLICATION**

Matador Production Company (“Matador” or “Applicant”), through its undersigned attorneys, hereby files this application with the Oil Conservation Division to amend pooling Order R-21812 to add additional mineral owners to the pooling order. In support of its application, Matador states:

1. Matador Production Company (OGRID No. 228937) is the designated operator under Order R-21812 entered in Case No. 22053 on August 26, 2021.
2. Order R-21812 pooled uncommitted mineral interests in the Bone Spring formation [Malaga; Bone Spring Pool (42780)] underlying a standard 320-acre horizontal spacing unit comprised of the S/2 N/2 of Sections 14 and 15, Township 24 South, Range 28 East, NMPM, Eddy County, New Mexico.
3. This standard horizontal well spacing unit is currently dedicated to the **Ken Wilson Com #112H well** (API No. 30-015-48103) and the **Ken Wilson Com #122H well** (API No. 30-015-48106), both horizontally drilled from a surface location in the SE/4 NE/4 (Unit H) of Section 14 to a bottomhole location in the SW/4 NW/4 (Unit E) of Section 15.
4. Applicant has discovered additional mineral owners in the pooled acreage that were not subject to the pooling proceedings giving rise to Order R-21812.

5. Applicant has sought and been unable to obtain voluntary agreement for the development of these lands from these additional mineral owners.

WHEREFORE, Applicant requests that this application be set for hearing before an Examiner of the Oil Conservation Division on July 7, 2022, and, after notice and hearing as required by law, the Division enter an order placing these additional mineral owners under the terms of Order R-21812.

Respectfully submitted,

HOLLAND & HART LLP

By: 

---

Michael H. Feldewert  
Adam G. Rankin  
Julia Broggi  
Paula M. Vance  
Post Office Box 2208  
Santa Fe, NM 87504  
505-998-4421  
505-983-6043 Facsimile  
mfeldewert@hollandhart.com  
agrarkin@hollandhart.com  
jbroggi@hollandhart.com  
pmvance@hollandhart.com

**ATTORNEYS FOR MATADOR PRODUCTION  
COMPANY**

**STATE OF NEW MEXICO  
DEPARTMENT OF ENERGY, MINERALS AND NATURAL RESOURCES  
OIL CONSERVATION DIVISION**

**APPLICATIONS OF MATADOR PRODUCTION  
COMPANY FOR COMPULSORY POOLING,  
EDDY COUNTY, NEW MEXICO.**

**CASE NOS. 22875 and 22876**

**AFFIDAVIT OF ROB HELBING**

Rob Helbing, of lawful age and being first duly sworn, states the following:

1. My name is Rob Helbing and I am employed by MRC Energy Company, an affiliate of Matador Production Company (“Matador”), as a Landman.

2. I have previously testified before the New Mexico Oil Conservation Division as an expert witness in petroleum land matters. My credentials as a petroleum landman have been accepted by the Division and made a matter of public record.

3. I am familiar with the applications filed by Matador in these consolidated cases and the status of the lands in the subject area.

4. In Case No. 22875, Matador seeks to re-open previous Case No 22052 and add additional parties to be pooled under NMOCD Order No. 21811, which created a standard horizontal spacing unit in the Bone Spring formation comprised of the N/2 N/2 of Sections 14 and 15, Township 24 South, Range 28 East, NMPM, Eddy County, New Mexico. The spacing unit was initially dedicated to the proposed initial **Bubba Burton Com #111H and Bubba Burton Com #121H wells**, both with a first take point in the NE/4 NE/4 (Unit A) of Section 14 and a last take point in the NW/4 NW/4 (Unit D) of Section 15.

5. In Case No. 22876, Matador seeks to re-open previous Case No 22053 and add additional parties to be pooled under NMOCD Order No. 21812, which created a standard

**BEFORE THE OIL CONSERVATION DIVISION  
Santa Fe, New Mexico  
Exhibit No. A**

**Submitted by: Matador Production Company  
Hearing Date: September 15, 2022  
Case Nos. 22875-22876**

horizontal spacing unit in the Bone Spring formation comprised of the S/2 N/2 of Sections 14 and 15, Township 24 South, Range 28 East, NMPM, Eddy County, New Mexico. The spacing unit was initially dedicated to the proposed initial **Ken Wilson Com #112H and Ken Wilson Com #122H wells**, both with a first take point in the SE/4 NE/4 (Unit H) of Section 14 and a last take point in the SW/4 NW/4 (Unit E) of Section 15.

6. **Matador Exhibit A-1** contains a draft Form C-102 for each of the proposed initial wells in these standard horizontal spacing units. These forms demonstrate that the completed interval for the wells will meet the standard setback requirements for horizontal oil wells.

7. Matador understands each of these wells has been placed in the Malaga; Bone Spring [42780] pool.

8. There are no depth severances within the Bone Spring formation underlying this acreage.

9. **Matador Exhibit A-2** identifies the additional working interest owners that Matador is seeking to pool in these proposed horizontal spacing units.

10. Matador has conducted a diligent search of the public records in the county where the property is located, reviewed telephone directories and conducted computer searches in an attempt to locate contact information for each of these mineral owners. Despite these efforts, Matador has thus far not been able to locate many of these additional parties we seek to pool. For a number of these owners, the original proposals were returned as undeliverable. We then conducted additional online searches and attempted to mail the proposals to other addresses potentially associated with those owners that we had been unable to locate. These lands involve numerous small tracts that together between these two spacing units include hundreds of owners showing in our title. Matador was able to locate the majority of these owners and obtain leases or



other voluntary agreements. However, because we have not been able to locate and/or reach agreement with the owners listed in Exhibit A-2 we are proceeding to force pooling.

11. **Matador Exhibit A-3** contains a sample of the well proposal letter and AFE sent to the working interest owners Matador is seeking to pool. The costs reflected in the AFE are consistent with what other operators have incurred for drilling similar horizontal wells in the area in these formations.

12. **Matador Exhibit A-4** contains a general summary of the contacts with the uncommitted working interest owners that Matador was able to locate. In my opinion, Matador has undertaken good faith efforts to reach an agreement with the uncommitted mineral owners.

13. Matador requests that the overhead and administrative costs for drilling and producing the proposed wells be set at \$8,000 per month while drilling and \$800 per month while producing. These costs are consistent with what other operators are charging in this area for similar wells.

14. Matador has provided its outside counsel, Holland and Hart, with the names and addresses (where available) of the parties that Matador seeks to pool and instructed that they be notified of this hearing.

15. **Matador Exhibits A-1 through A-4** were either prepared by me or compiled under my direction and supervision.

FURTHER AFFIANT SAYETH NAUGHT.

  
Rob Helbing

STATE OF TEXAS            )  
  )  
COUNTY OF DALLAS        )

SUBSCRIBED and SWORN to before me this 12<sup>th</sup> day of September 2022  
by Rob Helbing.

Katie Villanov  
NOTARY PUBLIC

My Commission Expires:

7/1/2023

# EXHIBIT A-1

District I  
1625 N. French Dr., Hobbs, NM 88240  
Phone: (575) 393-6161 Fax: (575) 393-0720  
District II  
811 S. First St., Artesia, NM 88210  
Phone: (575) 748-1283 Fax: (575) 748-9720  
District III  
1000 Rio Brazos Road, Aztec, NM 87410  
Phone: (505) 334-6178 Fax: (505) 334-6170  
District IV  
1220 S. St. Francis Dr., Santa Fe, NM 87505  
Phone: (505) 476-3460 Fax: (505) 476-3462

State of New Mexico  
Energy, Minerals & Natural Resources  
Department  
OIL CONSERVATION DIVISION  
1220 South St. Francis Dr.  
Santa Fe, NM 87505

Case Nos. 22875-22876 Revised August 1, 2011

Submit one copy to appropriate  
District Office

AMENDED REPORT

WELL LOCATION AND ACREAGE DEDICATION PLAT

|   |  |   |
|---|--|---|
| <sup>1</sup> API Number<br>30-015-48082 | <sup>2</sup> Pool Code<br><del>50371</del> 42780         | <sup>3</sup> Pool Name<br>MALAGA; BONE SPRING<br>PIERCE CROSSING; BONE SPRING |
| <sup>4</sup> Property Code<br>330255    | <sup>5</sup> Property Name<br>BUBBA BURTON               |   |
| <sup>7</sup> OGRID No.<br>228937        | <sup>8</sup> Operator Name<br>MATADOR PRODUCTION COMPANY |   |
|   |  | <sup>6</sup> Well Number<br>121H  |
|   |  | <sup>9</sup> Elevation<br>2977'   |

<sup>10</sup>Surface Location

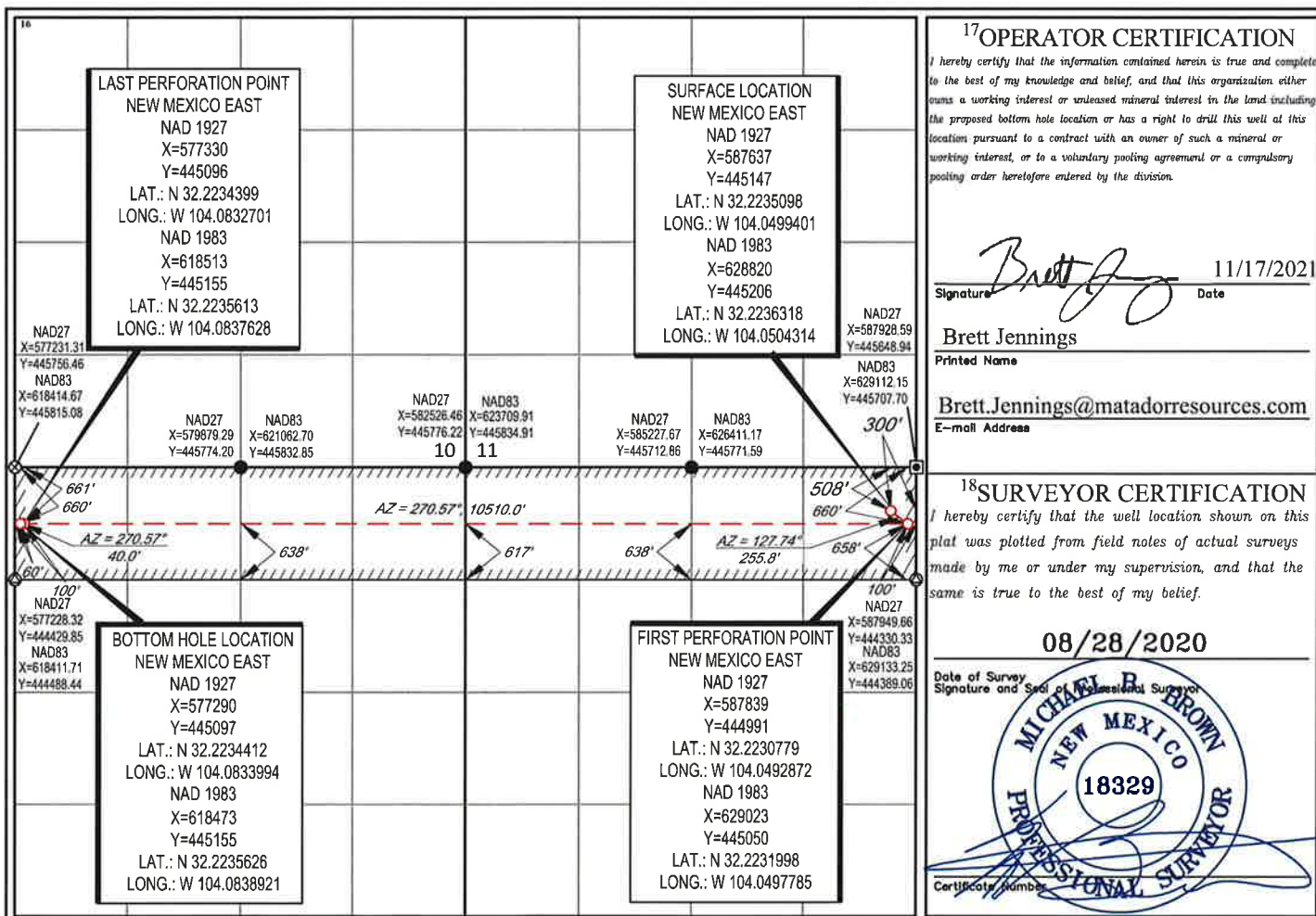
| UL or lot no. | Section | Township | Range | Lot Idn | Feet from the | North/South line | Feet from the | East/West line | County |
|---------------|---------|----------|-------|---------|---------------|------------------|---------------|----------------|--------|
| A             | 14      | 24-S     | 28-E  | -       | 508'          | NORTH            | 300'          | EAST           | EDDY   |

<sup>11</sup>Bottom Hole Location If Different From Surface

| UL or lot no. | Section | Township | Range | Lot Idn | Feet from the | North/South line | Feet from the | East/West line | County |
|---------------|---------|----------|-------|---------|---------------|------------------|---------------|----------------|--------|
| D             | 15      | 24-S     | 28-E  | -       | 660'          | NORTH            | 60'           | WEST           | EDDY   |

|                                      |                               |                                  |                         |
|--------------------------------------|-------------------------------|----------------------------------|-------------------------|
| <sup>12</sup> Dedicated Acres<br>320 | <sup>13</sup> Joint or Infill | <sup>14</sup> Consolidation Code | <sup>15</sup> Order No. |
|--------------------------------------|-------------------------------|----------------------------------|-------------------------|

No allowable will be assigned to this completion until all interests have been consolidated or a non-standard unit has been approved by the division.



**District I**  
1625 N French Dr., Hobbs, NM 88240  
Phone: (575) 393-6161 Fax: (575) 393-0720  
**District II**  
811 S First St., Artesia, NM 88210  
Phone: (575) 746-1283 Fax: (575) 746-9720  
**District III**  
1000 Rio Benito Road, Aztec, NM 87410  
Phone: (505) 334-6178 Fax: (505) 334-6170  
**District IV**  
1230 S St. Francis Dr., Santa Fe, NM 87505  
Phone: (505) 476-3460 Fax: (505) 476-3452

State of New Mexico  
Energy, Minerals & Natural Resources  
Department  
**OIL CONSERVATION DIVISION**  
1220 South St. Francis Dr.  
Santa Fe, NM 87505

**FORM C-102**  
Revised August 1, 2011  
Submit one copy to appropriate  
District Office

AMENDED REPORT

**WELL LOCATION AND ACREAGE DEDICATION PLAT**

|   |  |   |
|---|--|---|
| <sup>1</sup> API Number<br>30-015-48001 | <sup>2</sup> Pool Code<br>42780                          | <sup>3</sup> Pool Name<br>Malaga; Bone Spring |
| <sup>4</sup> Property Code              | <sup>5</sup> Property Name<br>BUBBA BURTON               | <sup>6</sup> Well Number<br>111H              |
| <sup>7</sup> GRID No.<br>228937         | <sup>8</sup> Operator Name<br>MATADOR PRODUCTION COMPANY | <sup>9</sup> Elevation<br>2977'               |

| <sup>10</sup> Surface Location |         |          |       |         |               |                  |               |                |        |
|--------------------------------|---------|----------|-------|---------|---------------|------------------|---------------|----------------|--------|
| UL or lot no.                  | Section | Township | Range | Lot Idn | Feet from the | North/South line | Feet from the | East/West line | County |
| A                              | 14      | 24-S     | 28-E  | -       | 509'          | NORTH            | 330'          | EAST           | EDDY   |

| <sup>11</sup> Bottom Hole Location If Different From Surface |         |          |       |         |               |                  |               |                |        |
|--|---------|----------|-------|---------|---------------|------------------|---------------|----------------|--------|
| UL or lot no.  | Section | Township | Range | Lot Idn | Feet from the | North/South line | Feet from the | East/West line | County |
| D  | 15      | 24-S     | 28-E  | -       | 660'          | NORTH            | 60'           | WEST           | EDDY   |

|                                      |                               |                                  |                         |
|--------------------------------------|-------------------------------|----------------------------------|-------------------------|
| <sup>12</sup> Dedicated Acres<br>320 | <sup>13</sup> Joint or Infill | <sup>14</sup> Consolidation Code | <sup>15</sup> Order No. |
|--------------------------------------|-------------------------------|----------------------------------|-------------------------|

No allowable will be assigned to this completion until all interests have been consolidated or a non-standard unit has been approved by the division.

**<sup>17</sup>OPERATOR CERTIFICATION**

I hereby certify that the information contained herein is true and complete to the best of my knowledge and belief, and that this organization either owns a working interest or unleased mineral interest in the land including the proposed bottom hole location or has a right to drill this well at this location pursuant to a contract with an owner of such a mineral or working interest or to a voluntary pooling agreement or a compulsory pooling order heretofore entered by the division.

*Robert Helbing* 9/13/2021  
Signature Date

Robert Helbing  
Printed Name

rhelbing@matadorresources.com  
E-mail Address

---

**<sup>18</sup>SURVEYOR CERTIFICATION**

I hereby certify that the well location shown on this plat was plotted from field notes of actual surveys made by me or under my supervision, and that the same is true to the best of my belief.

08/28/2020  
Date of Survey

*[Signature]*  
Signature and Seal

**ANGEL M. BERRA**  
NEW MEXICO  
28116  
PROFESSIONAL SURVEYOR

Certificate Number

S:\SURVEY\MATADOR\_RESOURCES\BUBBA\_BURTON\_14-24S-28E\FINAL\_PRODUCT\BUBBA\_BURTON\_111H.DWG 8/9/2020 12:31:44 P.M. adsabla

District I  
1625 N. French Dr., Hobbs, NM 88240  
Phone: (575) 393-6161 Fax: (575) 393-0720  
District II  
811 S. First St., Artesia, NM 88210  
Phone: (575) 748-1283 Fax: (575) 748-9720  
District III  
1000 Rio Brazos Road, Aztec, NM 87410  
Phone: (505) 334-6178 Fax: (505) 334-6170  
District IV  
1220 S. St. Francis Dr., Santa Fe, NM 87505  
Phone: (505) 476-3460 Fax: (505) 476-3462

State of New Mexico  
Energy, Minerals & Natural Resources  
Department  
OIL CONSERVATION DIVISION  
1220 South St. Francis Dr.  
Santa Fe, NM 87505

FORM C-102

Revised August 1, 2011

Submit one copy to appropriate

District Office

AMENDED REPORT

WELL LOCATION AND ACREAGE DEDICATION PLAT

|                                  |  |  |  |   |                                  |
|----------------------------------|--|--|--|---|----------------------------------|
| <sup>1</sup> API Number          |  | <sup>2</sup> Pool Code<br>42780                          |  | <sup>3</sup> Pool Name<br>MALAGA; BONE SPRING |                                  |
| <sup>4</sup> Property Code       |  | <sup>5</sup> Property Name<br>KEN WILSON 14 & 15         |  |   | <sup>6</sup> Well Number<br>122H |
| <sup>7</sup> OGRID No.<br>228937 |  | <sup>8</sup> Operator Name<br>MATADOR PRODUCTION COMPANY |  |   | <sup>9</sup> Elevation<br>2966'  |

<sup>10</sup>Surface Location

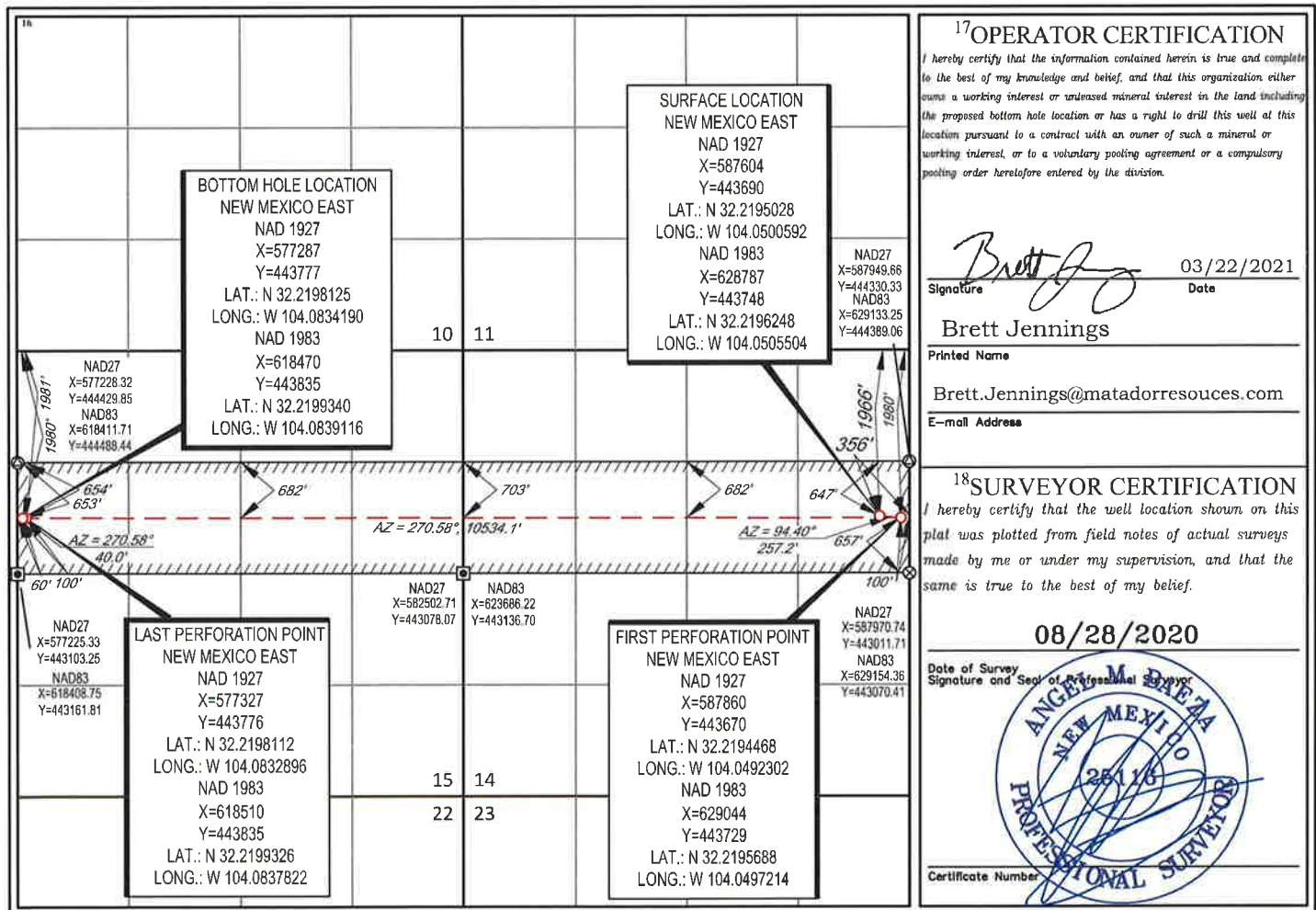
| UL or lot no. | Section | Township | Range | Lot Idn | Feet from the | North/South line | Feet from the | East/West line | County |
|---------------|---------|----------|-------|---------|---------------|------------------|---------------|----------------|--------|
| H             | 14      | 24-S     | 28-E  | -       | 1966'         | NORTH            | 356'          | EAST           | EDDY   |

<sup>11</sup>Bottom Hole Location If Different From Surface

| UL or lot no. | Section | Township | Range | Lot Idn | Feet from the | North/South line | Feet from the | East/West line | County |
|---------------|---------|----------|-------|---------|---------------|------------------|---------------|----------------|--------|
| E             | 15      | 24-S     | 28-E  | -       | 1980'         | NORTH            | 60'           | WEST           | EDDY   |

|                                      |                               |                                  |                         |
|--------------------------------------|-------------------------------|----------------------------------|-------------------------|
| <sup>12</sup> Dedicated Acres<br>320 | <sup>13</sup> Joint or Infill | <sup>14</sup> Consolidation Code | <sup>15</sup> Order No. |
|--------------------------------------|-------------------------------|----------------------------------|-------------------------|

No allowable will be assigned to this completion until all interests have been consolidated or a non-standard unit has been approved by the division.



District I  
1625 N. French Dr., Hobbs, NM 88240  
Phone: (575) 393-6161 Fax: (575) 393-0720  
District II  
811 S. First St., Artesia, NM 88210  
Phone: (575) 748-1283 Fax: (575) 748-9720  
District III  
1000 Rio Brazos Road, Aztec, NM 87410  
Phone: (505) 334-6178 Fax: (505) 334-6170  
District IV  
1220 S. St. Francis Dr., Santa Fe, NM 87505  
Phone: (505) 476-3460 Fax: (505) 476-3462

State of New Mexico  
Energy, Minerals & Natural Resources  
Department  
OIL CONSERVATION DIVISION  
1220 South St. Francis Dr.  
Santa Fe, NM 87505

FORM C-102

Revised August 1, 2011

Submit one copy to appropriate

District Office

AMENDED REPORT

WELL LOCATION AND ACREAGE DEDICATION PLAT

|                                  |  |                                 |   |
|----------------------------------|--|---------------------------------|---|
| <sup>1</sup> API Number          |  | <sup>2</sup> Pool Code<br>42780 | <sup>3</sup> Pool Name<br>MALAGA; BONE SPRING |
| <sup>4</sup> Property Code       | <sup>5</sup> Property Name<br>KEN WILSON 14 & 15         |                                 | <sup>6</sup> Well Number<br>112H              |
| <sup>7</sup> OGRID No.<br>228937 | <sup>8</sup> Operator Name<br>MATADOR PRODUCTION COMPANY |                                 | <sup>9</sup> Elevation<br>2966'               |

<sup>10</sup>Surface Location

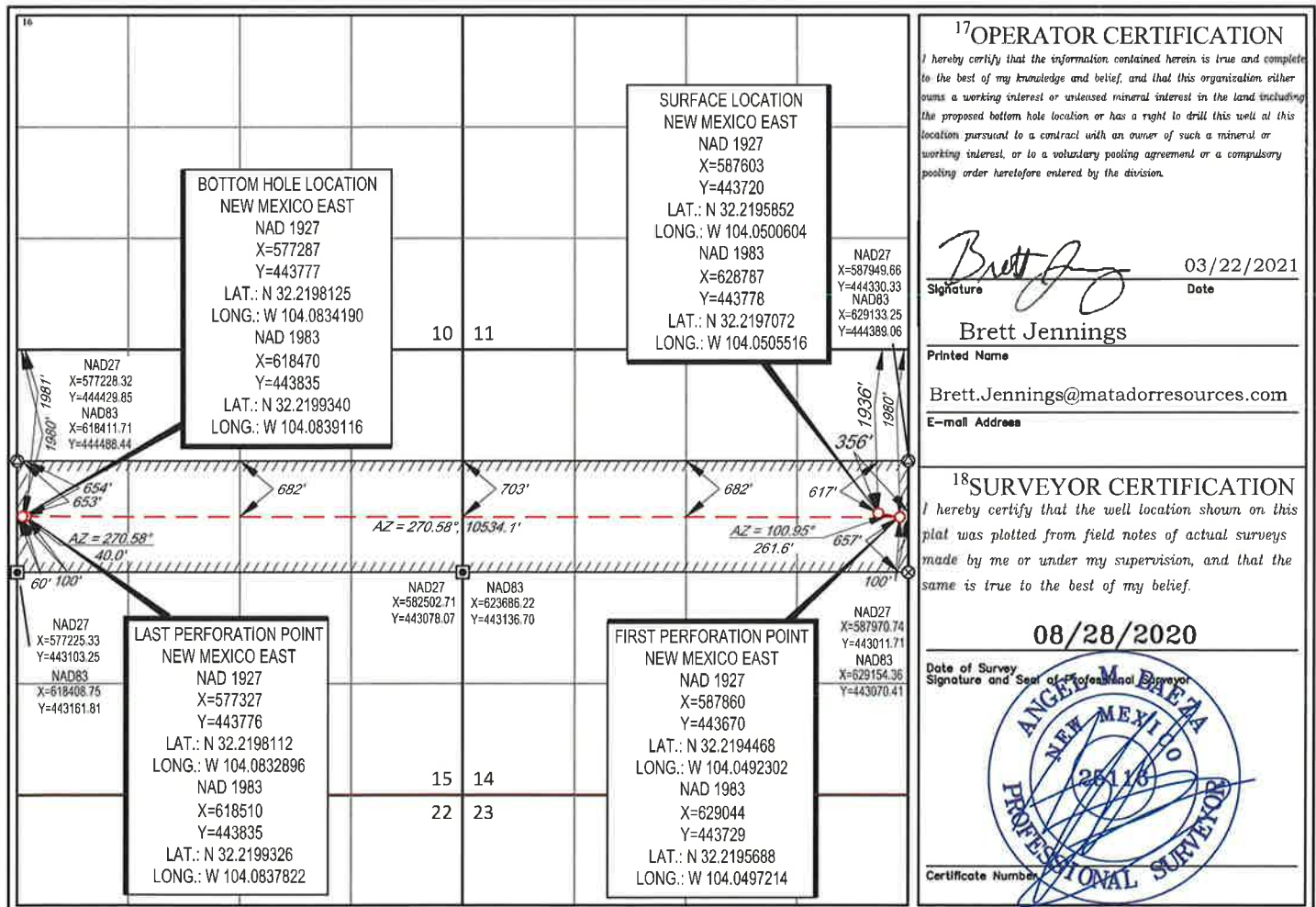
| UL or lot no. | Section | Township | Range | Lot Idn | Feet from the | North/South line | Feet from the | East/West line | County |
|---------------|---------|----------|-------|---------|---------------|------------------|---------------|----------------|--------|
| H             | 14      | 24-S     | 28-E  | -       | 1936'         | NORTH            | 356'          | EAST           | EDDY   |

<sup>11</sup>Bottom Hole Location If Different From Surface

| UL or lot no. | Section | Township | Range | Lot Idn | Feet from the | North/South line | Feet from the | East/West line | County |
|---------------|---------|----------|-------|---------|---------------|------------------|---------------|----------------|--------|
| E             | 15      | 24-S     | 28-E  | -       | 1980'         | NORTH            | 60'           | WEST           | EDDY   |

|                                      |                               |                                  |                         |
|--------------------------------------|-------------------------------|----------------------------------|-------------------------|
| <sup>12</sup> Dedicated Acres<br>320 | <sup>13</sup> Joint or Infill | <sup>14</sup> Consolidation Code | <sup>15</sup> Order No. |
|--------------------------------------|-------------------------------|----------------------------------|-------------------------|

No allowable will be assigned to this completion until all interests have been consolidated or a non-standard unit has been approved by the division.



# EXHIBIT A-2



CASE No. 22875

Matador  
 Exhibit 2

## Summary of Interests

| MRC Permian Company:     |              | 76.884616% |
|--------------------------|--------------|------------|
| Voluntary Joinder:       |              | 6.473406%  |
| Previously Force Pooled: |              | 9.164888%  |
| Current Force Pool:      |              | 7.477090%  |
| Interest Owner:          | Description: | Interest:  |
| EOG Resources, Inc.      | WI           | 2.572434%  |
| Berl T. Rogers           | WI           | 0.431899%  |
| Donna Bean               | WI           | 0.518279%  |
| Estate of Lina Foltz     | WI           | 0.259140%  |
| Estate of Rathelle Foltz | WI           | 0.259140%  |
| Glenda Sue Blake         | WI           | 0.518279%  |
| John P. Rogers           | WI           | 0.431899%  |
| John R. Rogers Jr.       | WI           | 0.431899%  |
| Johnna Rogers            | WI           | 0.431899%  |



## Summary of Interests

| Interest Owner:              | Description: | Interest: |
|------------------------------|--------------|-----------|
| Robin Rogers                 | WI           | 0.431899% |
| Barbara Mock                 | WI           | 0.518279% |
| DeVelva Bartlett Hampton     | WI           | 0.022657% |
| Elaine April Adame           | WI           | 0.012174% |
| Estate of Daniel Lewis Gooch | WI           | 0.012570% |
| Jason Tom Collins            | WI           | 0.012174% |
| Jerri Ballard                | WI           | 0.518279% |
| John D. Stribling            | WI           | 0.000525% |
| Lou Ellen Daniels            | WI           | 0.012570% |
| Matthew Collins              | WI           | 0.012174% |
| Robert Duncan Cain, Jr.      | WI           | 0.000175% |
| Roger Ogburn                 | WI           | 0.056567% |
| Sonya Marie Collins          | WI           | 0.012174% |



Summary of Interests

|                                 |                     |                   |
|---------------------------------|---------------------|-------------------|
| <b>MRC Permian Company:</b>     |                     | <b>77.907380%</b> |
| <b>Voluntary Joinder:</b>       |                     | <b>6.473406%</b>  |
| <b>Previously Force Pooled:</b> |                     | <b>11.580250%</b> |
| <b>Current Force Pool:</b>      |                     | <b>4.038964%</b>  |
| <b>Interest Owner:</b>          | <b>Description:</b> | <b>Interest:</b>  |
| EOG Resources, Inc.             | WI                  | 2.606654%         |
| Berl T. Rogers                  | WI                  | 0.010465%         |
| Donna Bean                      | WI                  | 0.010465%         |
| Estate of Lina Foltz            | WI                  | 0.383333%         |
| Estate of Rathelle Foltz        | WI                  | 0.383333%         |
| Glenda Sue Blake                | WI                  | 0.010465%         |
| John P. Rogers                  | WI                  | 0.005233%         |
| John R. Rogers Jr.              | WI                  | 0.010465%         |
| Johnna Rogers                   | WI                  | 0.010465%         |



## Summary of Interests

| Interest Owner:              | Description: | Interest: |
|------------------------------|--------------|-----------|
| Robin Rogers                 | WI           | 0.005233% |
| Barbara Mock                 | WI           | 0.244281% |
| DeVelva Bartlett Hampton     | WI           | 0.041860% |
| Elaine April Adame           | WI           | 0.001794% |
| Estate of Daniel Lewis Gooch | WI           | 0.001794% |
| Jason Tom Collins            | WI           | 0.093417% |
| Jerri Ballard                | WI           | 0.001163% |
| John D. Stribling            | WI           | 0.012558% |
| Lou Ellen Daniels            | WI           | 0.003140% |
| Matthew Collins              | WI           | 0.093417% |
| Robert Duncan Cain, Jr.      | WI           | 0.001884% |
| Roger Ogburn                 | WI           | 0.014128% |
| Sonya Marie Collins          | WI           | 0.093417% |



# EXHIBIT A-3

# MRC Permian Company

One Lincoln Centre • 5400 LBJ Freeway • Suite 1500 • Dallas, Texas 75240  
Voice 972.629.2163 • Fax 972.371.5201  
[rhelbing@matadorresources.com](mailto:rhelbing@matadorresources.com)

**Robert Helbing  
Landman**

June 16, 2021

VIA CERTIFIED RETURN RECEIPT MAIL

[OWNER]  
[ADDRESS]  
[CITY, STATE, ZIP]

Re: Bubba Burton Com 111H & Bubba Burton Com 121H (the “Wells”)  
Participation Proposal  
N/2 of Sections 14 & 15, Township 24 South, Range 28 East  
Eddy County, New Mexico

Dear Sir/Madam:

MRC Permian Company (“MRC”) proposes the drilling of Matador Production Company’s Bubba Burton Com 111H & Bubba Burton Com 121H Wells, located in the N/2 of Sections 14 & 15, Township 24 South, Range 28 East, Eddy County, New Mexico to the Bone Spring formation.

In connection with the above, please note the following:

- The estimated cost of drilling, testing, completing, and equipping of each Well is itemized on the two (2) enclosed Authority for Expenditures (“AFE”) dated May 20, 2021.
- **Bubba Burton Com #111H:** to be drilled from a legal location with a proposed surface hole location in the NE/4NE/4 of Section 14-24S-28E and a proposed bottom hole location in the NW/4NW/4 of Section 15-24S-28E. The Well will have a targeted interval within the Bone Spring formation and will be drilled horizontally in the Bone Spring (~7,300’ TVD) to a Measured Depth of approximately 17,550’.
- **Bubba Burton Com #121H:** to be drilled from a legal location with a proposed surface hole location in the NE/4NE/4 of Section 14-24S-28E and a proposed bottom hole location in the NW/4NW/4 of Section 15-24S-28E. The Well will have a targeted interval within the Bone Spring formation and will be drilled horizontally in the Bone Spring (~8,200’ TVD) to a Measured Depth of approximately 18,400’.

**BEFORE THE OIL CONSERVATION DIVISION  
Santa Fe, New Mexico  
Exhibit No. A3  
Submitted by: Matador Production Company  
Hearing Date: September 15, 2022  
Case Nos. 22875-22876**

MRC reserves the right to modify the locations and drilling plans described above in order to address topography, cultural or environmental concerns, among other reasons. MRC will advise you of any such modifications.

MRC requests that you indicate your election to participate in the drilling and completion of the Wells in the space provided below, sign and return one (1) copy of this letter to the undersigned.

As an alternative to participation in the well Matador is interested in leasing your mineral interest, subject to title verification, for \$1,500/acre, 1/5 royalty, and a 3 year term on the lease form enclosed. Should you be interested in leasing your minerals, please indicate so in the space provided below and return to my attention to discuss further.

If your election is to participate in the drilling and completion of the Well, please sign and return a copy of the enclosed AFE within thirty (30) days of receipt of this notice. Please be aware that the enclosed AFE is only an estimate of costs to be incurred and by electing to participate in the Well, each working interest owner shall be responsible for its proportionate share of all costs incurred.

Thank you for your consideration of this proposal. Please contact me if you have any questions.

Sincerely,

**MRC PERMIAN COMPANY**

Robert Helbing

**[OWNER] hereby elects to:**

\_\_\_\_\_ Participate for its proportionate share of the costs detailed in the enclosed AFE associated with Matador Production Company's **Bubba Burton Com 111H** Well.

\_\_\_\_\_ *Not* to participate in the **Bubba Burton Com 111H**.

\_\_\_\_\_ Participate for its proportionate share of the costs detailed in the enclosed AFE associated with Matador Production Company's **Bubba Burton Com 121H** Well.

\_\_\_\_\_ *Not* to participate in the **Bubba Burton Com 121H**.

\_\_\_\_\_ I/We are interested in leasing/selling my interest in this unit, please contact to discuss.

**[OWNER]**

By: \_\_\_\_\_

Title: \_\_\_\_\_

Date: \_\_\_\_\_

Contact Number: \_\_\_\_\_



## MRC Permian Company

One Lincoln Centre • 5400 LBJ Freeway • Suite 1500 • Dallas, Texas 75240  
Voice 972.629.2163 • Fax 972.371.5201  
[rhelbing@matadorresources.com](mailto:rhelbing@matadorresources.com)

---

**Robert Helbing**  
**Landman**

June 16, 2021

VIA CERTIFIED RETURN RECEIPT MAIL

[OWNER]  
[ADDRESS]  
[CITY, STATE, ZIP]

Re: Ken Wilson Com 112H & Ken Wilson Com 122H (the "Wells")  
Participation Proposal  
N/2 of Sections 14 & 15, Township 24 South, Range 28 East  
Eddy County, New Mexico

Dear Sir/Madam:

MRC Permian Company ("MRC") proposes the drilling of Matador Production Company's Ken Wilson Com 112H & Ken Wilson Com 122H Wells, located in the N/2 of Sections 14 & 15, Township 24 South, Range 28 East, Eddy County, New Mexico to the Bone Spring formation.

In connection with the above, please note the following:

- The estimated cost of drilling, testing, completing, and equipping of each Well is itemized on the two (2) enclosed Authority for Expenditures ("AFE") dated May 20, 2021.
- **Ken Wilson Com #112H:** to be drilled from a legal location with a proposed surface hole location in the SE/4NE/4 of Section 14-24S-28E and a proposed bottom hole location in the SW/4NW/4 of Section 15-24S-28E. The Well will have a targeted interval within the Bone Spring formation and will be drilled horizontally in the Bone Spring (~7,300' TVD) to a Measured Depth of approximately 17,550'.
- **Ken Wilson Com #122H:** to be drilled from a legal location with a proposed surface hole location in the SE/4NE/4 of Section 14-24S-28E and a proposed bottom hole location in the SW/4NW/4 of Section 15-24S-28E. The Well will have a targeted interval within the Bone Spring formation and will be drilled horizontally in the Bone Spring (~8,200' TVD) to a Measured Depth of approximately 18,400'.

MRC reserves the right to modify the locations and drilling plans described above in order to address topography, cultural or environmental concerns, among other reasons. MRC will advise you of any such modifications.

MRC requests that you indicate your election to participate in the drilling and completion of the Wells in the space provided below, sign and return one (1) copy of this letter to the undersigned.

As an alternative to participation in the well Matador is interested in leasing your mineral interest, subject to title verification, for \$1,500/acre, 1/5 royalty, and a 3 year term on the lease form enclosed. Should you be interested in leasing your minerals, please indicate so in the space provided below and return to my attention to discuss further.

If your election is to participate in the drilling and completion of the Well, please sign and return a copy of the enclosed AFE within thirty (30) days of receipt of this notice. Please be aware that the enclosed AFE is only an estimate of costs to be incurred and by electing to participate in the Well, each working interest owner shall be responsible for its proportionate share of all costs incurred.

Thank you for your consideration of this proposal. Please contact me if you have any questions.

Sincerely,

**MRC PERMIAN COMPANY**

Robert Helbing

**[OWNER] hereby elects to:**

\_\_\_\_\_ Participate for its proportionate share of the costs detailed in the enclosed AFE associated with Matador Production Company's **Ken Wilson Com 112H** Well.

\_\_\_\_\_ *Not* to participate in the **Ken Wilson Com 112H**.

\_\_\_\_\_ Participate for its proportionate share of the costs detailed in the enclosed AFE associated with Matador Production Company's **Ken Wilson Com 122H** Well.

\_\_\_\_\_ *Not* to participate in the **Ken Wilson Com 122H**.

\_\_\_\_\_ I/We are interested in leasing/selling my interest in this unit, please contact to discuss.

**[OWNER]**

By: \_\_\_\_\_

Title: \_\_\_\_\_

Date: \_\_\_\_\_

Contact Number: \_\_\_\_\_

**MATADOR PRODUCTION COMPANY**

ONE LINCOLN CENTRE • 5400 LBJ FREEWAY • SUITE 1500 • DALLAS, TEXAS 75240  
Phone (972) 371-5200 • Fax (972) 371-5201

**ESTIMATE OF COSTS AND AUTHORIZATION FOR EXPENDITURE**

|                  |   |                 |                   |
|------------------|---|-----------------|-------------------|
| DATE:            | May 20, 2021  | AFE NO.:        | 500001.672.01.001 |
| WELL NAME:       | Bubba Burton Com 111H   | FIELD:          |                   |
| LOCATION:        | Sections 14&15-24S-28E  | MD/TVD:         | 17550'/7300'      |
| COUNTY/STATE:    | Eddy, NM  | LATERAL LENGTH: | 10,000            |
| MRC WI:          |   |                 |                   |
| GEOLOGIC TARGET: | First Bone Spring Sand  |                 |                   |
| REMARKS:         | Drill and complete a horizontal 2 mile long First Bone Spring sand target with about 46 frac stages |                 |                   |

|                                   | DRILLING COSTS   | COMPLETION COSTS | PRODUCTION COSTS | FACILITY COSTS | TOTAL COSTS      |
|-----------------------------------|------------------|------------------|------------------|----------------|------------------|
| <b>INTANGIBLE COSTS</b>           |                  |                  |                  |                |                  |
| Land / Legal / Regulatory         | \$ 58,000        | \$ -             | \$ 50,000        | \$ 10,000      | \$ 118,000       |
| Location, Surveys & Damages       | 123,333          | 13,000           | 25,000           | 25,000         | 186,333          |
| Drilling                          | 579,325          | -                | -                | -              | 579,325          |
| Cementing & Float Equip           | 180,000          | -                | -                | -              | 180,000          |
| Logging / Formation Evaluation    | -                | 3,000            | 3,000            | -              | 6,000            |
| Flowback - Labor                  | -                | -                | 24,000           | -              | 24,000           |
| Flowback - Surface Rentals        | -                | -                | 136,225          | -              | 136,225          |
| Flowback - Rental Living Quarters | -                | -                | -                | -              | -                |
| Mud Logging                       | 9,375            | -                | -                | -              | 9,375            |
| Mud Circulation System            | 41,675           | -                | -                | -              | 41,675           |
| Mud & Chemicals                   | 65,000           | 49,000           | 10,000           | -              | 124,000          |
| Mud / Wastewater Disposal         | 105,000          | -                | 7,500            | -              | 112,500          |
| Freight / Transportation          | 12,750           | 26,700           | -                | -              | 39,450           |
| Rig Supervision / Engineering     | 87,400           | 91,500           | 8,400            | 12,600         | 199,900          |
| Drill Bits                        | 73,700           | -                | -                | -              | 73,700           |
| Fuel & Power                      | 97,200           | 352,098          | -                | -              | 449,298          |
| Water                             | 35,000           | 577,500          | 3,000            | -              | 615,500          |
| Drig & Completion Overhead        | 11,500           | -                | -                | -              | 11,500           |
| Plugging & Abandonment            | -                | -                | -                | -              | -                |
| Directional Drilling, Surveys     | 103,306          | -                | -                | -              | 103,306          |
| Completion Unit, Swab, CTU        | -                | 118,000          | 8,600            | -              | 126,600          |
| Perforating, Wireline, Slickline  | -                | 178,609          | 7,000            | -              | 185,609          |
| High Pressure Pump Truck          | -                | 61,875           | 8,000            | -              | 69,875           |
| Stimulation                       | -                | 1,645,076        | -                | -              | 1,645,076        |
| Stimulation Flowback & Disp       | -                | 15,500           | 100,000          | -              | 115,500          |
| Insurance                         | 31,590           | -                | -                | -              | 31,590           |
| Labor                             | 125,500          | 59,750           | 10,000           | -              | 195,250          |
| Rental - Surface Equipment        | 54,260           | 329,988          | 10,000           | -              | 394,248          |
| Rental - Downhole Equipment       | 165,875          | 88,000           | 2,000            | -              | 255,875          |
| Rental - Living Quarters          | 40,890           | 39,333           | -                | -              | 80,223           |
| Contingency                       | 63,072           | 200,185          | 40,623           | -              | 303,880          |
| MaxCom                            | 21,726           | -                | -                | -              | 21,726           |
| <b>TOTAL INTANGIBLES &gt;</b>     | <b>2,165,477</b> | <b>3,847,113</b> | <b>454,348</b>   | <b>47,600</b>  | <b>6,514,538</b> |

|                                  | DRILLING COSTS   | COMPLETION COSTS | PRODUCTION COSTS | FACILITY COSTS | TOTAL COSTS      |
|----------------------------------|------------------|------------------|------------------|----------------|------------------|
| <b>TANGIBLE COSTS</b>            |                  |                  |                  |                |                  |
| Surface Casing                   | \$ 14,792        | \$ -             | \$ -             | \$ -           | \$ 14,792        |
| Intermediate Casing              | 100,679          | -                | -                | -              | 100,679          |
| Drilling Liner                   | -                | -                | -                | -              | -                |
| Production Casing                | 359,327          | -                | -                | -              | 359,327          |
| Production Liner                 | -                | -                | -                | -              | -                |
| Tubing                           | -                | -                | 66,000           | -              | 66,000           |
| Wellhead                         | 72,250           | -                | 25,000           | -              | 97,250           |
| Packers, Liner Hangers           | -                | 56,989           | 8,000            | -              | 64,989           |
| Tanks                            | -                | -                | -                | 50,000         | 50,000           |
| Production Vessels               | -                | -                | -                | 135,000        | 135,000          |
| Flow Lines                       | -                | -                | -                | 100,000        | 100,000          |
| Rod string                       | -                | -                | -                | -              | -                |
| Artificial Lift Equipment        | -                | -                | 20,000           | -              | 20,000           |
| Compressor                       | -                | -                | -                | 40,000         | 40,000           |
| Installation Costs               | -                | -                | -                | 75,000         | 75,000           |
| Surface Pumps                    | -                | -                | 5,000            | 25,000         | 30,000           |
| Non-controllable Surface         | -                | -                | -                | -              | -                |
| Non-controllable Downhole        | -                | -                | -                | -              | -                |
| Downhole Pumps                   | -                | -                | -                | -              | -                |
| Measurement & Meter Installation | -                | -                | 11,000           | 75,000         | 86,000           |
| Gas Conditioning / Dehydration   | -                | -                | -                | -              | -                |
| Interconnecting Facility Piping  | -                | -                | -                | 60,000         | 60,000           |
| Gathering / Bulk Lines           | -                | -                | -                | -              | -                |
| Valves, Dumps, Controllers       | -                | -                | 2,000            | -              | 2,000            |
| Tank / Facility Containment      | -                | -                | -                | 10,000         | 10,000           |
| Flare Stack                      | -                | -                | -                | 20,000         | 20,000           |
| Electrical / Grounding           | -                | -                | -                | 50,000         | 50,000           |
| Communications / SCADA           | -                | -                | 12,000           | -              | 12,000           |
| Instrumentation / Safety         | -                | -                | -                | 42,000         | 42,000           |
| <b>TOTAL TANGIBLES &gt;</b>      | <b>547,048</b>   | <b>59,989</b>    | <b>147,000</b>   | <b>702,000</b> | <b>1,455,038</b> |
| <b>TOTAL COSTS &gt;</b>          | <b>2,712,526</b> | <b>3,906,102</b> | <b>601,348</b>   | <b>749,600</b> | <b>7,969,576</b> |

**PREPARED BY MATADOR PRODUCTION COMPANY:**

|                       |              |                    |            |
|-----------------------|--------------|--------------------|------------|
| Drilling Engineer:    | Blake Hermes | Team Lead - WTX/NM | <u>WTE</u> |
| Completions Engineer: | Garrett Hunt |                    | WTE        |
| Production Engineer:  | Kyle Chnsly  |                    |            |

**MATADOR RESOURCES COMPANY APPROVAL:**

|                       |     |                           |     |   |    |
|-----------------------|-----|---------------------------|-----|---|----|
| Executive VP, COO/CFO | DEL | EVP CTO - Res Engineering | BMR | EVP COO - Drilling, Completion and Production | BC |
| Executive VP, Legal   | CA  | SVP Geoscience            | NLF |   |    |
| President             | MVH |                           |     |   |    |

**NON OPERATING PARTNER APPROVAL:**

|               |       |                       |                         |         |       |
|---------------|-------|-----------------------|-------------------------|---------|-------|
| Company Name: | _____ | Working Interest (%): | _____                   | Tax ID: | _____ |
| Signed by:    | _____ | Date:                 | _____                   |         |       |
| Title:        | _____ | Approval:             | Yes _____ No (mark one) |         |       |

The costs on this AFE are estimates only and may not be identical to actual costs incurred. The Participant agrees to pay its proportionate share of actual costs incurred. The Participant's obligation to pay its proportionate share of actual costs incurred is not limited by the amount of the AFE. The Participant's obligation to pay its proportionate share of actual costs incurred is not limited by the amount of the AFE. The Participant's obligation to pay its proportionate share of actual costs incurred is not limited by the amount of the AFE.

**MATADOR PRODUCTION COMPANY**

ONE LINCOLN CENTRE • 5400 LBJ FREEWAY • SUITE 1500 • DALLAS, TEXAS 75240

Phone (972) 371-5200 • Fax (972) 371-5201

**ESTIMATE OF COSTS AND AUTHORIZATION FOR EXPENDITURE**

|                  |  |                 |                   |
|------------------|--|-----------------|-------------------|
| DATE:            | May 20, 2021   | AFE NO.:        | 500002.009.01.001 |
| WELL NAME:       | Bubba Burton Com 121H  | FIELD:          |                   |
| LOCATION:        | Sections 14&15-24S-28E   | MD/TVD:         | 18400'/8200'      |
| COUNTY/STATE:    | Eddy, NM   | LATERAL LENGTH: | 10,000            |
| MRC WI:          |  |                 |                   |
| GEOLOGIC TARGET: | Second Bone Spring Sand  |                 |                   |
| REMARKS:         | Drill and complete a horizontal 2 mile long Second Bone Spring sand target with about 46 frac stages |                 |                   |

|                                   | DRILLING COSTS   | COMPLETION COSTS | PRODUCTION COSTS | FACILITY COSTS | TOTAL COSTS      |
|-----------------------------------|------------------|------------------|------------------|----------------|------------------|
| <b>INTANGIBLE COSTS</b>           |                  |                  |                  |                |                  |
| Land / Legal / Regulatory         | \$ 58,000        | \$ -             | \$ 50,000        | \$ 10,000      | \$ 118,000       |
| Location, Surveys & Damages       | 123,333          | 13,000           | 25,000           | 25,000         | 186,333          |
| Drilling                          | 608,931          | -                | -                | -              | 608,931          |
| Cementing & Float Equip           | 180,000          | -                | -                | -              | 180,000          |
| Logging / Formation Evaluation    | -                | 3,000            | 3,000            | -              | 6,000            |
| Flowback - Labor                  | -                | -                | 24,000           | -              | 24,000           |
| Flowback - Surface Rentals        | -                | -                | 136,225          | -              | 136,225          |
| Flowback - Rental Living Quarters | -                | -                | -                | -              | -                |
| Mud Logging                       | 9,375            | -                | -                | -              | 9,375            |
| Mud Circulation System            | 41,675           | -                | -                | -              | 41,675           |
| Mud & Chemicals                   | 65,000           | 48,000           | 10,000           | -              | 124,000          |
| Mud / Wastewater Disposal         | 105,000          | -                | 7,500            | -              | 112,500          |
| Freight / Transportation          | 12,750           | 26,700           | -                | -              | 39,450           |
| Rtg Supervision / Engineering     | 87,400           | 91,500           | 8,400            | 12,600         | 199,900          |
| Drill Bits                        | 73,700           | -                | -                | -              | 73,700           |
| Fuel & Power                      | 97,200           | 352,088          | -                | -              | 449,288          |
| Water                             | 35,000           | 577,500          | 3,000            | -              | 615,500          |
| Drig & Completion Overhead        | 11,500           | -                | -                | -              | 11,500           |
| Plugging & Abandonment            | -                | -                | -                | -              | -                |
| Directional Drilling, Surveys     | 188,712          | -                | -                | -              | 188,712          |
| Completion Unit, Swab, CTU        | -                | 118,000          | 9,600            | -              | 127,600          |
| Perforating, Wireline, Slickline  | -                | 178,609          | 7,000            | -              | 185,609          |
| Hgh Pressure Pump Truck           | -                | 61,875           | 8,000            | -              | 69,875           |
| Stimulation                       | -                | 1,667,902        | -                | -              | 1,667,902        |
| Stimulation Flowback & Disp       | -                | 15,500           | 100,000          | -              | 115,500          |
| Insurance                         | 33,120           | -                | -                | -              | 33,120           |
| Labor                             | 125,500          | 59,750           | 10,000           | -              | 195,250          |
| Rental - Surface Equipment        | 54,260           | 329,988          | 10,000           | -              | 394,248          |
| Rental - Downhole Equipment       | 165,875          | 86,000           | 2,000            | -              | 253,875          |
| Rental - Living Quarters          | 40,890           | 39,333           | -                | -              | 80,223           |
| Contingency                       | 64,168           | 200,185          | 40,623           | -              | 304,976          |
| MaxCom                            | 21,726           | -                | -                | -              | 21,726           |
| <b>TOTAL INTANGIBLES &gt;</b>     | <b>2,203,115</b> | <b>3,869,939</b> | <b>454,348</b>   | <b>47,600</b>  | <b>6,575,002</b> |
| <b>TANGIBLE COSTS</b>             |                  |                  |                  |                |                  |
| Surface Casing                    | \$ 14,792        | \$ -             | \$ -             | \$ -           | \$ 14,792        |
| Intermediate Casing               | 100,679          | -                | -                | -              | 100,679          |
| Drilling Liner                    | -                | -                | -                | -              | -                |
| Production Casing                 | 376,004          | -                | -                | -              | 376,004          |
| Production Liner                  | -                | -                | -                | -              | -                |
| Tubing                            | -                | -                | 67,650           | -              | 67,650           |
| Wellhead                          | 72,250           | -                | 25,000           | -              | 97,250           |
| Packers, Liner Hangers            | -                | 58,989           | 6,000            | -              | 64,989           |
| Tanks                             | -                | -                | -                | 50,000         | 50,000           |
| Production Vessels                | -                | -                | -                | 135,000        | 135,000          |
| Flow Lines                        | -                | -                | -                | 100,000        | 100,000          |
| Rod string                        | -                | -                | -                | -              | -                |
| Artificial Lift Equipment         | -                | -                | 20,000           | -              | 20,000           |
| Compressor                        | -                | -                | -                | 40,000         | 40,000           |
| Installation Costs                | -                | -                | -                | 75,000         | 75,000           |
| Surface Pumps                     | -                | -                | 5,000            | 25,000         | 30,000           |
| Non-controllable Surface          | -                | -                | -                | -              | -                |
| Non-controllable Downhole         | -                | -                | -                | -              | -                |
| Downhole Pumps                    | -                | -                | -                | -              | -                |
| Measurement & Meter Installation  | -                | -                | 11,000           | 75,000         | 86,000           |
| Gas Conditioning / Dehydration    | -                | -                | -                | -              | -                |
| Interconnecting Facility Piping   | -                | -                | -                | 80,000         | 80,000           |
| Gathering / Bulk Lines            | -                | -                | -                | -              | -                |
| Valves, Dumps, Controllers        | -                | -                | 2,000            | -              | 2,000            |
| Tank / Facility Containment       | -                | -                | -                | 10,000         | 10,000           |
| Flare Stack                       | -                | -                | -                | 20,000         | 20,000           |
| Electrical / Grounding            | -                | -                | -                | 50,000         | 50,000           |
| Communications / SCADA            | -                | -                | 12,000           | -              | 12,000           |
| Instrumentation / Safety          | -                | -                | -                | 42,000         | 42,000           |
| <b>TOTAL TANGIBLES &gt;</b>       | <b>563,725</b>   | <b>59,989</b>    | <b>148,650</b>   | <b>702,000</b> | <b>1,473,364</b> |
| <b>TOTAL COSTS &gt;</b>           | <b>2,766,840</b> | <b>3,929,928</b> | <b>602,998</b>   | <b>749,600</b> | <b>8,048,366</b> |

**PREPARED BY MATADOR PRODUCTION COMPANY:**

|                       |              |                    |            |
|-----------------------|--------------|--------------------|------------|
| Drilling Engineer:    | Blake Hermes | Team Lead - WTX/NM | <u>WTE</u> |
| Completions Engineer: | Garrett Hunt |                    | WTE        |
| Production Engineer:  | Kyle Christy |                    |            |

**MATADOR RESOURCES COMPANY APPROVAL:**

|                       |     |                           |     |  |    |
|-----------------------|-----|---------------------------|-----|--|----|
| Executive VP, COO/CFO | DEL | EVP CTO - Res Engineering | BMR | EVP COO- Drilling, Completion and Production | BG |
| Executive VP, Legal   | CA  | SVP Geoscience            | NLF |  |    |
| President             | MVH |                           |     |  |    |

**NON OPERATING PARTNER APPROVAL:**

|               |       |                       |                         |         |       |
|---------------|-------|-----------------------|-------------------------|---------|-------|
| Company Name: | _____ | Working Interest (%): | _____                   | Tax ID: | _____ |
| Signed by:    | _____ | Date:                 | _____                   |         |       |
| Title:        | _____ | Approval:             | Yes _____ No (mark one) |         |       |

The AFE and this AFE are intended only and may not be intended as a contract or any specific part of the total cost of the project. Taking installation approval prior to the AFE may be required to be a part of the well has been completed. In executing the AFE, the Participants agree to pay its obligations in full and to indemnify the other party from and hold it harmless from all claims, including legal, regulatory, compliance and other costs under the terms of the applicable and governing permit, regulatory order or other agreement covering the well. Participants shall be deemed to have accepted and to hold the other party for the Operator's well control and general liability insurance which participant provides (by either a certificate of insurance or an amount acceptable to the Operator by the date of AFE).

**MATADOR PRODUCTION COMPANY**

ONE LINCOLN CENTRE • 5400 LBJ FREEWAY • SUITE 1500 • DALLAS, TEXAS 75240

Phone (972) 371-5200 • Fax (972) 371-5201

**ESTIMATE OF COSTS AND AUTHORIZATION FOR EXPENDITURE**

|                  |   |                 |                   |
|------------------|---|-----------------|-------------------|
| DATE:            | May 20, 2021  | AFE NO.:        | 500001.676.01.001 |
| WELL NAME:       | Ken Wilson Com 112H   | FIELD:          |                   |
| LOCATION:        | Sections 14&15-24S-28E  | MD/TVD:         | 17550/17300'      |
| COUNTY/STATE:    | Eddy, NM  | LATERAL LENGTH: | 10,000            |
| MRC W:           |   |                 |                   |
| GEOLOGIC TARGET: | First Bone Spring Sand  |                 |                   |
| REMARKS:         | Drill and complete a horizontal 2 mile long First Bone Spring sand target with about 46 frac stages |                 |                   |

| INTANGIBLE COSTS                  | DRILLING COSTS   | COMPLETION COSTS | PRODUCTION COSTS | FACILITY COSTS | TOTAL COSTS      |
|-----------------------------------|------------------|------------------|------------------|----------------|------------------|
| Land / Legal / Regulatory         | \$ 58,000        | \$ -             | \$ 50,000        | \$ 10,000      | \$ 118,000       |
| Location, Surveys & Damages       | 123,333          | 13,000           | 25,000           | 25,000         | 186,333          |
| Drilling                          | 579,325          | -                | -                | -              | 579,325          |
| Cementing & Float Equip           | 180,000          | -                | -                | -              | 180,000          |
| Logging / Formation Evaluation    | -                | 3,000            | 3,000            | -              | 6,000            |
| Flowback - Labor                  | -                | -                | 24,000           | -              | 24,000           |
| Flowback - Surface Rentals        | -                | -                | 131,000          | -              | 131,000          |
| Flowback - Rental Living Quarters | -                | -                | -                | -              | -                |
| Mud Logging                       | 9,375            | -                | -                | -              | 9,375            |
| Mud Circulation System            | 41,875           | -                | -                | -              | 41,875           |
| Mud & Chemicals                   | 65,000           | 49,000           | 10,000           | -              | 124,000          |
| Mud / Wastewater Disposal         | 105,000          | -                | 7,500            | -              | 112,500          |
| Freight / Transportation          | 12,750           | 26,700           | -                | -              | 39,450           |
| Rlg Supervision / Engineering     | 87,400           | 91,500           | 8,400            | 12,600         | 199,900          |
| Drill Bits                        | 73,700           | -                | -                | -              | 73,700           |
| Fuel & Power                      | 97,200           | 352,098          | -                | -              | 449,298          |
| Water                             | 35,000           | 577,500          | 3,000            | -              | 615,500          |
| Drig & Completion Overhead        | 11,500           | -                | -                | -              | 11,500           |
| Plugging & Abandonment            | -                | -                | -                | -              | -                |
| Directional Drilling, Surveys     | 183,306          | -                | -                | -              | 183,306          |
| Completion Unit, Swab, CTU        | -                | 118,000          | 9,800            | -              | 127,800          |
| Perforating, Wireline, Slickline  | -                | 178,609          | 7,000            | -              | 185,609          |
| High Pressure Pump Truck          | -                | 61,875           | 8,000            | -              | 69,875           |
| Stimulation                       | -                | 1,645,076        | -                | -              | 1,645,076        |
| Stimulation Flowback & Disp       | -                | 15,500           | 100,000          | -              | 115,500          |
| Insurance                         | 31,590           | -                | -                | -              | 31,590           |
| Labor                             | 125,500          | 59,750           | 10,000           | -              | 195,250          |
| Rental - Surface Equipment        | 54,260           | 329,988          | 10,000           | -              | 394,248          |
| Rental - Downhole Equipment       | 165,875          | 86,000           | 2,000            | -              | 253,875          |
| Rental - Living Quarters          | 40,890           | 39,333           | -                | -              | 80,223           |
| Contingency                       | 63,072           | 200,185          | 40,100           | -              | 303,357          |
| MaxCom                            | 21,726           | -                | -                | -              | 21,726           |
| <b>TOTAL INTANGIBLES &gt;</b>     | <b>2,165,477</b> | <b>3,847,113</b> | <b>448,600</b>   | <b>47,600</b>  | <b>6,508,790</b> |

| TANGIBLE COSTS                   | DRILLING COSTS   | COMPLETION COSTS | PRODUCTION COSTS | FACILITY COSTS | TOTAL COSTS      |
|----------------------------------|------------------|------------------|------------------|----------------|------------------|
| Surface Casing                   | \$ 14,792        | \$ -             | \$ -             | \$ -           | \$ 14,792        |
| Intermediate Casing              | 100,679          | -                | -                | -              | 100,679          |
| Drilling Liner                   | -                | -                | -                | -              | -                |
| Production Casing                | 359,327          | -                | -                | -              | 359,327          |
| Production Liner                 | -                | -                | -                | -              | -                |
| Tubing                           | -                | -                | 86,000           | -              | 86,000           |
| Wellhead                         | 72,250           | -                | 25,000           | -              | 97,250           |
| Packers, Liner Hangers           | -                | 58,988           | 8,000            | -              | 64,988           |
| Tanks                            | -                | -                | -                | 50,000         | 50,000           |
| Production Vessels               | -                | -                | -                | 135,000        | 135,000          |
| Flow Lines                       | -                | -                | -                | 100,000        | 100,000          |
| Rod string                       | -                | -                | -                | -              | -                |
| Artificial Lift Equipment        | -                | -                | 20,000           | -              | 20,000           |
| Compressor                       | -                | -                | -                | 40,000         | 40,000           |
| Installation Costs               | -                | -                | -                | 75,000         | 75,000           |
| Surface Pumps                    | -                | -                | 5,000            | 25,000         | 30,000           |
| Non-controllable Surface         | -                | -                | -                | -              | -                |
| Non-controllable Downhole        | -                | -                | -                | -              | -                |
| Downhole Pumps                   | -                | -                | -                | -              | -                |
| Measurement & Meter Installation | -                | -                | 11,000           | 75,000         | 86,000           |
| Gas Conditioning / Dehydration   | -                | -                | -                | -              | -                |
| Interconnecting Facility Piping  | -                | -                | -                | 80,000         | 80,000           |
| Gathering / Bulk Lines           | -                | -                | -                | -              | -                |
| Valves, Dumps, Controllers       | -                | -                | 2,000            | -              | 2,000            |
| Tank / Facility Containment      | -                | -                | -                | 10,000         | 10,000           |
| Flare Stack                      | -                | -                | -                | 20,000         | 20,000           |
| Electrical / Grounding           | -                | -                | -                | 50,000         | 50,000           |
| Communications / SCADA           | -                | -                | 12,000           | -              | 12,000           |
| Instrumentation / Safety         | -                | -                | -                | 42,000         | 42,000           |
| <b>TOTAL TANGIBLES &gt;</b>      | <b>547,048</b>   | <b>58,989</b>    | <b>147,000</b>   | <b>702,000</b> | <b>1,455,038</b> |
| <b>TOTAL COSTS &gt;</b>          | <b>2,712,525</b> | <b>3,906,102</b> | <b>595,600</b>   | <b>749,600</b> | <b>7,963,828</b> |

**PREPARED BY MATADOR PRODUCTION COMPANY:**

|                       |              |                    |            |
|-----------------------|--------------|--------------------|------------|
| Drilling Engineer:    | Blake Hermes | Team Lead - WTX/NM | <u>WTE</u> |
| Completions Engineer: | Garrell Hunt |                    | WTE        |
| Production Engineer:  | Kyle Christy |                    |            |

**MATADOR RESOURCES COMPANY APPROVAL:**

|                       |     |                           |     |  |    |
|-----------------------|-----|---------------------------|-----|--|----|
| Executive VP, COO/CFO | DEL | EVP CTO - Res Engineering | BMR | EVP COO- Drilling, Completion and Production | BG |
| Executive VP, Legal   | CA  | SVP Geoscience            | NLF |  |    |
| President             | MVH |                           |     |  |    |

**NON OPERATING PARTNER APPROVAL:**

|               |                       |               |
|---------------|-----------------------|---------------|
| Company Name: | Working Interest (%): | Tax ID:       |
| Signed by:    | Date:                 |               |
| Title:        | Approval: Yes         | No (mark one) |

This costs and AFE are estimates only and may not be considered as binding on any specific date to the total cost of the project. Tubing completion approved under the AFE may be allowed up to 6 year after the well has been completed. In executing this AFE, the Participant agrees to pay its proportionate share of actual costs incurred under the legal surface, regulatory, leasehold and well location. The terms of the applicable well operating agreement, regulatory order or other agreement governing the well. Participants shall be covered by and hold responsibility for Operator's well control and general liability insurance unless otherwise provided. Operator is a WTE member of an amount appropriate to the Operator by the date of cost.

**MATADOR PRODUCTION COMPANY**

ONE LINCOLN CENTRE • 5400 LBJ FREEWAY • SUITE 1500 • DALLAS, TEXAS 75240

Phone (972) 371-5200 • Fax (972) 371-5201

**ESTIMATE OF COSTS AND AUTHORIZATION FOR EXPENDITURE**

|                  |  |                 |                   |
|------------------|--|-----------------|-------------------|
| DATE:            | May 20, 2021   | AFE NO.:        | 500002.015.01.001 |
| WELL NAME:       | Ken Wilson Com 122H  | FIELD:          |                   |
| LOCATION:        | Sections 14&15-24S-26E   | MD/TVD:         | 18400'/8200'      |
| COUNTY/STATE:    | Eddy, NM   | LATERAL LENGTH: | 10,000            |
| MRC WI:          |  |                 |                   |
| GEOLOGIC TARGET: | Second Bone Spring Sand  |                 |                   |
| REMARKS:         | Drill and complete a horizontal 2 mile long Second Bone Spring sand target with about 46 frac stages |                 |                   |

|                                   | DRILLING COSTS   | COMPLETION COSTS | PRODUCTION COSTS | FACILITY COSTS | TOTAL COSTS      |
|-----------------------------------|------------------|------------------|------------------|----------------|------------------|
| <b>INTANGIBLE COSTS</b>           |                  |                  |                  |                |                  |
| Land / Legal / Regulatory         | \$ 58,000        | \$ -             | \$ 50,000        | \$ 10,000      | \$ 118,000       |
| Location, Surveys & Damages       | 123,333          | 13,000           | 25,000           | 25,000         | 186,333          |
| Drilling                          | 608,931          | -                | -                | -              | 608,931          |
| Cementing & Float Equip           | 180,000          | -                | -                | -              | 180,000          |
| Logging / Formation Evaluation    | -                | 3,000            | 3,000            | -              | 6,000            |
| Flowback - Labor                  | -                | -                | 24,000           | -              | 24,000           |
| Flowback - Surface Rentals        | -                | -                | 131,000          | -              | 131,000          |
| Flowback - Rental Living Quarters | -                | -                | -                | -              | -                |
| Mud Logging                       | 9,375            | -                | -                | -              | 9,375            |
| Mud Circulation System            | 41,675           | -                | -                | -              | 41,675           |
| Mud & Chemicals                   | 65,000           | 49,000           | 10,000           | -              | 124,000          |
| Mud / Wastewater Disposal         | 105,000          | -                | 7,500            | -              | 112,500          |
| Freight / Transportation          | 12,750           | 25,700           | -                | -              | 39,450           |
| Rig Supervision / Engineering     | 67,400           | 91,500           | 8,400            | 12,600         | 199,900          |
| Drill Bits                        | 73,700           | -                | -                | -              | 73,700           |
| Fuel & Power                      | 97,200           | 352,098          | -                | -              | 449,298          |
| Water                             | 35,000           | 577,500          | 3,000            | -              | 615,500          |
| Drig & Completion Overhead        | 11,500           | -                | -                | -              | 11,500           |
| Plugging & Abandonment            | -                | -                | -                | -              | -                |
| Directional Drilling, Surveys     | 188,712          | -                | -                | -              | 188,712          |
| Completion Unit, Swab, CTU        | -                | 118,000          | 9,600            | -              | 127,600          |
| Perforating, Wireline, Slickline  | -                | 178,609          | 7,000            | -              | 185,609          |
| High Pressure Pump Truck          | -                | 61,875           | 8,000            | -              | 69,875           |
| Stimulation                       | -                | 1,667,902        | -                | -              | 1,667,902        |
| Stimulation Flowback & Disp       | -                | 15,500           | 100,000          | -              | 115,500          |
| Insurance                         | 33,120           | -                | -                | -              | 33,120           |
| Labor                             | 125,500          | 59,750           | 10,000           | -              | 195,250          |
| Rental - Surface Equipment        | 54,260           | 329,988          | 10,000           | -              | 394,248          |
| Rental - Downhole Equipment       | 165,875          | 86,000           | 2,000            | -              | 253,875          |
| Rental - Living Quarters          | 40,890           | 39,333           | -                | -              | 80,223           |
| Contingency                       | 64,168           | 200,185          | 40,100           | -              | 304,454          |
| MaxCom                            | 21,726           | -                | -                | -              | 21,726           |
| <b>TOTAL INTANGIBLES &gt;</b>     | <b>2,293,115</b> | <b>3,869,939</b> | <b>448,600</b>   | <b>47,600</b>  | <b>6,569,254</b> |

|                                  | DRILLING COSTS   | COMPLETION COSTS | PRODUCTION COSTS | FACILITY COSTS | TOTAL COSTS      |
|----------------------------------|------------------|------------------|------------------|----------------|------------------|
| <b>TANGIBLE COSTS</b>            |                  |                  |                  |                |                  |
| Surface Casing                   | \$ 14,792        | \$ -             | \$ -             | \$ -           | \$ 14,792        |
| Intermediate Casing              | 100,679          | -                | -                | -              | 100,679          |
| Drilling Liner                   | -                | -                | -                | -              | -                |
| Production Casing                | 376,004          | -                | -                | -              | 376,004          |
| Production Liner                 | -                | -                | -                | -              | -                |
| Tubing                           | -                | -                | 67,650           | -              | 67,650           |
| Weilthead                        | 72,250           | -                | 25,000           | -              | 97,250           |
| Packers, Liner Hangers           | -                | 58,989           | 6,000            | -              | 64,989           |
| Tanks                            | -                | -                | -                | 50,000         | 50,000           |
| Production Vessels               | -                | -                | -                | 135,000        | 135,000          |
| Flow Lines                       | -                | -                | -                | 100,000        | 100,000          |
| Rod string                       | -                | -                | -                | -              | -                |
| Artificial Lift Equipment        | -                | -                | 20,000           | -              | 20,000           |
| Compressor                       | -                | -                | -                | 40,000         | 40,000           |
| Installation Costs               | -                | -                | -                | 75,000         | 75,000           |
| Surface Pumps                    | -                | -                | 5,000            | 25,000         | 30,000           |
| Non-controllable Surface         | -                | -                | -                | -              | -                |
| Non-controllable Downhole        | -                | -                | -                | -              | -                |
| Downhole Pumps                   | -                | -                | -                | -              | -                |
| Measurement & Meter Installation | -                | -                | 11,000           | 75,000         | 86,000           |
| Gas Conditioning / Dehydration   | -                | -                | -                | -              | -                |
| Interconnecting Facility Piping  | -                | -                | -                | 80,000         | 80,000           |
| Gathering / Bulk Lines           | -                | -                | -                | -              | -                |
| Valves, Dumps, Controllers       | -                | -                | 2,000            | -              | 2,000            |
| Tank / Facility Containment      | -                | -                | -                | 10,000         | 10,000           |
| Flare Stack                      | -                | -                | -                | 20,000         | 20,000           |
| Electrical / Grounding           | -                | -                | -                | 50,000         | 50,000           |
| Communications / SCADA           | -                | -                | 12,000           | -              | 12,000           |
| Instrumentation / Safety         | -                | -                | -                | 42,000         | 42,000           |
| <b>TOTAL TANGIBLES &gt;</b>      | <b>563,725</b>   | <b>58,989</b>    | <b>148,650</b>   | <b>702,000</b> | <b>1,473,364</b> |
| <b>TOTAL COSTS &gt;</b>          | <b>2,766,840</b> | <b>3,928,928</b> | <b>597,250</b>   | <b>749,600</b> | <b>8,042,618</b> |

**PREPARED BY MATADOR PRODUCTION COMPANY:**

|                       |               |                    |            |
|-----------------------|---------------|--------------------|------------|
| Drilling Engineer:    | Blake Hermes  | Team Lead - WTX/NM | <u>WTE</u> |
| Completions Engineer: | Garnett Hurre |                    | WTE        |
| Production Engineer:  | Kyle Christy  |                    |            |

**MATADOR RESOURCES COMPANY APPROVAL:**

|                       |            |                           |            |   |           |
|-----------------------|------------|---------------------------|------------|---|-----------|
| Executive VP, COO/CFO | <u>DEL</u> | EVP CTO - Res Engineering | <u>BMR</u> | EVP COO - Drilling, Completion and Production | <u>BG</u> |
| Executive VP, Legal   | <u>CA</u>  | SVP Geoscience            | <u>NLF</u> |   |           |
| President             | <u>MVH</u> |                           |            |   |           |

**NON OPERATING PARTNER APPROVAL:**

|               |       |                       |                         |         |       |
|---------------|-------|-----------------------|-------------------------|---------|-------|
| Company Name: | _____ | Working Interest (%): | _____                   | Tax ID: | _____ |
| Signed by:    | _____ | Date:                 | _____                   |         |       |
| Title:        | _____ | Approval:             | Yes _____ No (mark one) |         |       |

The costs in this AFE are estimates only and may not be approved as budgets on any specific part or for the cost of the project. Funding of activities is subject to the AFE being approved by the Operator. The Operator agrees to pay, or reimburse, the costs of the AFE, including the AFE, surveys, reports, drawings and well logs under the terms of the applicable lease operating agreement, regulatory rules or other agreement covering the well. The Operator's liability for the AFE is limited to the amount of the AFE. The Operator's liability for the AFE is limited to the amount of the AFE.

# EXHIBIT A-4



Summary of Communications – Bubba Burton Com N/2N/2

Uncommitted Working Interest:

**1. EOG Resources, Inc**

In addition to sending well proposals, Matador is engaged in discussions with EOG to reach voluntary joinder.

**2. Berl T. Rogers**

Matador has sent well proposals to multiple addresses associated with this interest owner in an effort to reach voluntary joinder.

**3. Donna Bean**

Matador has sent well proposals to multiple addresses associated with this interest owner in an effort to reach voluntary joinder.

**4. Estate of Lina Foltz:**

Matador has sent well proposals to multiple addresses associated with this interest owner in an effort to reach voluntary joinder.

**5. Estate of Rathelle Foltz:**

Matador has sent well proposals to multiple addresses associated with this interest owner in an effort to reach voluntary joinder.

**6. Glenda Sue Blake:**

Matador has sent well proposals to multiple addresses associated with this interest owner in an effort to reach voluntary joinder.

**7. John P. Rogers:**

Matador has sent well proposals to multiple addresses associated with this interest owner in an effort to reach voluntary joinder.

**8. John R. Rogers Jr.:**

Matador has sent well proposals to multiple addresses associated with this interest owner in an effort to reach voluntary joinder.

**9. Johnna Rogers:**

Matador has sent well proposals to multiple addresses associated with this interest owner in an effort to reach voluntary joinder.

**10. Robin Rogers:**

Matador has sent well proposals to multiple addresses associated with this interest owner in an effort to reach voluntary joinder.

**11. Barbara Mock:**

Matador has sent well proposals to multiple addresses associated with this interest owner in an effort to reach voluntary joinder.

BEFORE THE OIL CONSERVATION DIVISION  
Santa Fe, New Mexico  
Exhibit No. A4

Submitted by: Matador Production Company  
Hearing Date: September 15, 2022  
Case Nos. 22875-22876

**12. DeVelva Bartlett Hampton:**

Matador has sent well proposals to multiple addresses associated with this interest owner in an effort to reach voluntary joinder.

**13. Elaine April Adame:**

Matador has sent well proposals to multiple addresses associated with this interest owner in an effort to reach voluntary joinder.

**14. Estate of Daniel Lewis Gooch:**

Matador has sent well proposals to multiple addresses associated with this interest owner in an effort to reach voluntary joinder.

**15. Jason Tom Collins:**

Matador has sent well proposals to multiple addresses associated with this interest owner in an effort to reach voluntary joinder.

**16. Jerri Ballard:**

Matador has sent well proposals to multiple addresses associated with this interest owner in an effort to reach voluntary joinder.

**17. John D. Stribling:**

Matador has sent well proposals to multiple addresses associated with this interest owner in an effort to reach voluntary joinder.

**18. Matthew Collins:**

Matador has sent well proposals to multiple addresses associated with this interest owner in an effort to reach voluntary joinder.

**19. Robert Duncan Cain, Jr.:**

Matador has sent well proposals to multiple addresses associated with this interest owner in an effort to reach voluntary joinder.

**20. Roger Ogburn:**

Matador has sent well proposals to multiple addresses associated with this interest owner in an effort to reach voluntary joinder.

**21. Sonya Marie Collins:**

Matador has sent well proposals to multiple addresses associated with this interest owner in an effort to reach voluntary joinder.

Summary of Communications – Ken Wilson Com S/2N/2

Uncommitted Working Interest:

**1. EOG Resources, Inc**

In addition to sending well proposals, Matador is engaged in discussions with EOG to reach voluntary joinder.

**2. Berl T. Rogers**

Matador has sent well proposals to multiple addresses associated with this interest owner in an effort to reach voluntary joinder.

**3. Donna Bean**

Matador has sent well proposals to multiple addresses associated with this interest owner in an effort to reach voluntary joinder.

**4. Estate of Lina Foltz:**

Matador has sent well proposals to multiple addresses associated with this interest owner in an effort to reach voluntary joinder.

**5. Estate of Rathelle Foltz:**

Matador has sent well proposals to multiple addresses associated with this interest owner in an effort to reach voluntary joinder.

**6. Glenda Sue Blake:**

Matador has sent well proposals to multiple addresses associated with this interest owner in an effort to reach voluntary joinder.

**7. John P. Rogers:**

Matador has sent well proposals to multiple addresses associated with this interest owner in an effort to reach voluntary joinder.

**8. John R. Rogers Jr.:**

Matador has sent well proposals to multiple addresses associated with this interest owner in an effort to reach voluntary joinder.

**9. Johnna Rogers:**

Matador has sent well proposals to multiple addresses associated with this interest owner in an effort to reach voluntary joinder.

**10. Robin Rogers:**

Matador has sent well proposals to multiple addresses associated with this interest owner in an effort to reach voluntary joinder.

**11. Barbara Mock:**

Matador has sent well proposals to multiple addresses associated with this interest owner in an effort to reach voluntary joinder.

**12. DeVelva Bartlett Hampton:**

Matador has sent well proposals to multiple addresses associated with this interest owner in an effort to reach voluntary joinder.

**13. Elaine April Adame:**

Matador has sent well proposals to multiple addresses associated with this interest owner in an effort to reach voluntary joinder.

**14. Estate of Daniel Lewis Gooch:**

Matador has sent well proposals to multiple addresses associated with this interest owner in an effort to reach voluntary joinder.

**15. Jason Tom Collins:**

Matador has sent well proposals to multiple addresses associated with this interest owner in an effort to reach voluntary joinder.

**16. John D. Stribling:**

Matador has sent well proposals to multiple addresses associated with this interest owner in an effort to reach voluntary joinder.

**17. Matthew Collins:**

Matador has sent well proposals to multiple addresses associated with this interest owner in an effort to reach voluntary joinder.

**18. Robert Duncan Cain, Jr.:**

Matador has sent well proposals to multiple addresses associated with this interest owner in an effort to reach voluntary joinder.

**19. Roger Ogburn:**

Matador has sent well proposals to multiple addresses associated with this interest owner in an effort to reach voluntary joinder.

**20. Sonya Marie Collins:**

Matador has sent well proposals to multiple addresses associated with this interest owner in an effort to reach voluntary joinder.

**STATE OF NEW MEXICO  
ENERGY, MINERALS AND NATURAL RESOURCES DEPARTMENT  
OIL CONSERVATION DIVISION**

**APPLICATION OF MATADOR PRODUCTION COMPANY TO AMEND ORDER R-21811 TO ADD AN ADDITIONAL POOLED PARTY, LEA COUNTY, NEW MEXICO.**

**CASE NO. 22875  
(formerly Case 22052)**

**APPLICATION OF MATADOR PRODUCTION COMPANY TO AMEND ORDER R-21812 TO ADD AN ADDITIONAL POOLED PARTY, LEA COUNTY, NEW MEXICO.**

**CASE NO. 22876  
(formerly Case 22053)**

**SELF-AFFIRMED STATEMENT OF  
PAULA M. VANCE**

1. I am attorney in fact and authorized representative of Matador Production Company (“Matador”), the Applicant herein. I have personal knowledge of the matters addressed herein and am competent to provide this self-affirmed statement.

2. The above-referenced applications and notice of the hearing on these applications was sent by certified mail to the locatable affected parties on the date set forth in the letter attached hereto.

3. The spreadsheet attached hereto contains the names of the parties to whom notice was provided.

4. The spreadsheet attached hereto contains the information provided by the United States Postal Service on the status of the delivery of this notice as of September 13, 2022.

5. I caused a notice to be published to all parties subject to these applications to amend proceedings on June 19, 2022. An affidavit of publication from the publication’s legal clerk with a copy of the notice publication is attached as Exhibit C.

6. I affirm under penalty of perjury under the laws of the State of New Mexico that

**BEFORE THE OIL CONSERVATION DIVISION  
Santa Fe, New Mexico  
Exhibit No. B**

**Submitted by: Matador Production Company  
Hearing Date: September 15, 2022  
Case Nos. 22875-22876**

the foregoing statements are true and correct. I understand that this self-affirmed statement will be used as written testimony in this case. This statement is made on the date next to my signature below.



\_\_\_\_\_  
Paula M. Vance

9/13/22

\_\_\_\_\_  
Date



**Paula M. Vance**  
Phone (505) 988-4421  
pmvance@hollandhart.com

June 17, 2022

**VIA CERTIFIED MAIL**  
**CERTIFIED RECEIPT REQUESTED**

**TO: ALL INTEREST OWNERS SUBJECT TO POOLING PROCEEDINGS**

**Re: Application of Matador Production Company to Amend Order R-21811 to Add Additional Pooled Parties, Eddy County, New Mexico. Bubba Burton Com #111H & #121H wells**

Ladies & Gentlemen:

This letter is to advise you that Matador Production Company has filed the enclosed application with the New Mexico Oil Conservation Division. A hearing has been requested before a Division Examiner on July 7, 2022, and the status of the hearing can be monitored through the Division’s website at <http://www.emnrd.state.nm.us/ocd/>. **During the COVID-19 Public Health Emergency, state buildings are closed to the public and hearings will be conducted remotely beginning at 8:15 a.m. To participate in the electronic hearing, see the instructions posted on the OCD Hearings website: <https://www.emnrd.nm.gov/ocd/hearing-info/>.**

You are not required to attend this hearing, but as an owner of an interest that may be affected by this application, you may appear and present testimony. Failure to appear at that time and become a party of record will preclude you from challenging the matter at a later date. Parties appearing in cases are required to file a Pre-hearing Statement four business days in advance of a scheduled hearing that complies with the provisions of NMAC 19.15.4.13.B.

If you have any questions about this matter, please contact Robert Helbing, at (972) 629-2163 or [rhelbing@matadorresources.com](mailto:rhelbing@matadorresources.com).

Sincerely,

Paula M. Vance  
**ATTORNEY FOR MATADOR PRODUCTION COMPANY**

T 505.988.4421 F 505.983.6043  
110 North Guadalupe, Suite 1, Santa Fe, NM 87501-1849  
Mail to: P.O. Box 2208, Santa Fe, NM 87504-2208  
[www.hollandhart.com](http://www.hollandhart.com)

|          |            |                  |
|----------|------------|------------------|
| Alaska   | Montana    | Utah             |
| Colorado | Nevada     | Washington, D.C. |
| Idaho    | New Mexico | Wyoming          |



**Paula M. Vance**  
Phone (505) 988-4421  
pmvance@hollandhart.com

June 17, 2022

**VIA CERTIFIED MAIL**  
**CERTIFIED RECEIPT REQUESTED**

**TO: ALL INTEREST OWNERS SUBJECT TO POOLING PROCEEDINGS**

**Re: Application of Matador Production Company to Amend Order R-21812 to Add Additional Pooled Parties, Eddy County, New Mexico.  
Ken Wilson Com #112H & #122H wells**

Ladies & Gentlemen:

This letter is to advise you that Matador Production Company has filed the enclosed application with the New Mexico Oil Conservation Division. A hearing has been requested before a Division Examiner on July 7, 2022, and the status of the hearing can be monitored through the Division's website at <http://www.emnrd.state.nm.us/ocd/>. **During the COVID-19 Public Health Emergency, state buildings are closed to the public and hearings will be conducted remotely beginning at 8:15 a.m. To participate in the electronic hearing, see the instructions posted on the OCD Hearings website: <https://www.emnrd.nm.gov/ocd/hearing-info/>.**

You are not required to attend this hearing, but as an owner of an interest that may be affected by this application, you may appear and present testimony. Failure to appear at that time and become a party of record will preclude you from challenging the matter at a later date. Parties appearing in cases are required to file a Pre-hearing Statement four business days in advance of a scheduled hearing that complies with the provisions of NMAC 19.15.4.13.B.

If you have any questions about this matter, please contact Robert Helbing, at (972) 629-2163 or [rhelbing@matadorresources.com](mailto:rhelbing@matadorresources.com).

Sincerely,

Paula M. Vance  
**ATTORNEY FOR MATADOR PRODUCTION  
COMPANY**

T 505.988.4421 F 505.983.6043  
110 North Guadalupe, Suite 1, Santa Fe, NM 87501-1849  
Mail to: P.O. Box 2208, Santa Fe, NM 87504-2208  
[www.hollandhart.com](http://www.hollandhart.com)

|          |            |                  |
|----------|------------|------------------|
| Alaska   | Montana    | Utah             |
| Colorado | Nevada     | Washington, D.C. |
| Idaho    | New Mexico | Wyoming          |



MRC - Bubba Burton Ken Wilson  
Case Nos. 22875-22786 Postal Delivery Reportr

| TrackingNo             | ToName                       | DeliveryAddress          | City      | State | Zip        | USPS_Status   |
|------------------------|------------------------------|--------------------------|-----------|-------|------------|---|
| 9414811898765878898487 | EOG Resources, Inc.          | 5509 Champions Dr        | Midland   | TX    | 79706-2843 | Your item was picked up at a postal facility at 7:31 am on June 22, 2022 in MIDLAND, TX 79701.                                |
| 9414811898765878898432 | John R. Rogers Jr.           | PO Box 1503              | Homer     | AK    | 99603-1503 | Your item was picked up at the post office at 10:15 am on July 1, 2022 in HOMER, AK 99603.                                    |
| 9414811898765878898470 | DeVelva Barlett Hampton      | 226 Windy Ln             | Rockwall  | TX    | 75087-8005 | Your item was picked up at the post office at 1:11 pm on July 14, 2022 in SANTA FE, NM 87501.                                 |
| 9414811898765878898517 | Estate of Daniel Lewis Gooch | 1720 E College Ave Apt 8 | Guthrie   | OK    | 73044-4537 | Your item was refused by the addressee at 10:18 am on July 7, 2022 in SANTA FE, NM 87501 and is being returned to the sender. |
| 9414811898765878898562 | Lou Ellen Daniels            | 309 W Kansas St          | Hennessey | OK    | 73742-1013 | Your item has been delivered to the original sender at 1:39 pm on July 5, 2022 in SANTA FE, NM 87501.                         |

**Carlsbad Current Argus.**  
PART OF THE USA TODAY NETWORK

**Affidavit of Publication**

Ad # 0005304497

**This is not an invoice**

**HOLLAND AND HART**  
POBOX 2208


**SANTA FE, NM 87504**

I, a legal clerk of the **Carlsbad Current Argus**, a newspaper published daily at the City of Carlsbad, in said county of Eddy, state of New Mexico and of general paid circulation in said county; that the same is a duly qualified newspaper under the laws of the State wherein legal notices and advertisements may be published; that the printed notice attached hereto was published in the regular and entire edition of said newspaper and not in supplement thereof in editions dated as follows:

**06/19/2022**

  
\_\_\_\_\_  
Legal Clerk

Subscribed and sworn before me this June 19, 2022:

  
\_\_\_\_\_  
State of WI, County of Brown  
NOTARY PUBLIC

1-7-85

\_\_\_\_\_  
My commission expires

**KATHLEEN ALLEN**  
Notary Public  
State of Wisconsin

Ad # 0005304497  
PO #: Case No. 22875  
# of Affidavits 1

**This is not an invoice**

**BEFORE THE OIL CONSERVATION DIVISION**  
Santa Fe, New Mexico  
Exhibit No. C  
Submitted by: Matador Production Company  
Hearing Date: September 15, 2022  
Case Nos. 22875-22876

STATE OF NEW MEXICO  
ENERGY, MINERALS AND  
NATURAL RESOURCES  
DEPARTMENT  
OIL CONSERVATION  
DIVISION  
SANTA FE, NEW MEXICO

The State of New Mexico, Energy Minerals and Natural Resources Department, Oil Conservation Division ("Division") hereby gives notice that the Division will hold public hearings before a hearing examiner on the following case. During the COVID-19 Public Health Emergency, state buildings are closed to the public and Division hearings will be conducted remotely. The public hearing for the following case will be electronic and conducted remotely. The hearing will be conducted on Thursday, July 7, 2022, beginning at 8:15 a.m. To participate in the electronic hearing, see the instructions posted below. The docket may be viewed at <https://www.emnrd.nm.gov/ocd/hearing-info/> or obtained from Marlene Salvidrez, at [Marlene.Salvidrez@state.nm.us](mailto:Marlene.Salvidrez@state.nm.us). Documents filed in the case may be viewed at <https://ocdimage.emnrd.nm.gov/imaging/Default.aspx>. If you are an individual with a disability who needs a reader, amplifier, qualified sign language interpreter, or other form of auxiliary aid or service to attend or participate in a hearing, contact Marlene Salvidrez at [Marlene.Salvidrez@state.nm.us](mailto:Marlene.Salvidrez@state.nm.us), or the New Mexico Relay Network at 1-800-659-1779, no later than June 27, 2022.

Persons may view and participate in the hearings through the following link:

<https://nmemnrd.webex.com/nmemnrd/onstage/g.php?MTID=e29a55db1164da76e4e10ed24585779e8>

Event number: 2498 639 5029  
Event password: K3bNFEgdm98

Join by video: 24986395029@nmemnrd.webex.com  
You can also dial 173.243.2.68 and enter your meeting number  
Numeric Password: 507711

Join by audio: 1-844-992-4726 United States Toll Free  
Access code: 2498 639 502

STATE OF NEW MEXICO TO:  
All named parties and persons having any right, title, interest or claim in the following case and notice to the public.

(NOTE: All land descriptions herein refer to the New Mexico Principal Meridian whether or not so stated.)

To: All interest owners subject to pooling proceedings, including: EOG Resources, Inc.; Berl T. Rogers, his heirs and devisees; Donna Bean,

her heirs and devisees; Estate of Lina Foltz, her heirs and devisees; Estate of Rathelle Foltz, her heirs and devisees; Glenda Sue Blake, her heirs and devisees; John P. Rogers, his heirs and devisees; John R. Rogers Jr., his heirs and devisees; Johnna Rogers, her heirs and devisees; Robin Rogers, his or her heirs and devisees; Barbara Mock, her heirs and devisees; DeVeiva Bartlett Hampton, his or her heirs and devisees; Elaine April Adame, her heirs and devisees; Estate of Daniel Lewis Gooch, his heirs and devisees; Jason Tom Collins, his heirs and devisees; Jerri Ballard, his or her heirs and devisees; John D. Stribling, his heirs and devisees; Lou Ellen Daniels, her heirs and devisees; Matthew Collins, his heirs and devisees; Robert Duncan Cain, Jr., his heirs and devisees; Roger Ogburn, his heirs and devisees; and Sonya Marie Collins, her heirs and devisees.

Case No. 22875: (formerly Case 22052): Application of Matador Production Company to Amend Order R-21811 to Add Additional Pooled Parties, Eddy County, New Mexico. Applicant seeks an order from the Division amending Order R-21811 (issued in Case 22052) to add additional mineral owners to the terms of the pooling order. Order R-21811 pooled uncommitted mineral interests in the Bone Spring formation [Malaga; Bone Spring Pool (42780)] underlying a standard 320-acre horizontal spacing unit comprised of the N/2 N/2 of Sections 14 and 15, Township 24 South, Range 28 East, NMPM, Eddy County, New Mexico. This standard horizontal well spacing unit is currently dedicated to the Bubba Burton Com #111H well (API No. 30-015-48081) and the Bubba Burton Com #121H well (API No. 30-015-48082). This area is located near Malaga, New Mexico. #5304497, Current Argus, June 19, 2022

**Carlsbad Current Argus.**  
PART OF THE US TODAY NETWORK

**Affidavit of Publication**

Ad # 0005304516

**This is not an invoice**

**HOLLAND AND HART**  
POBOX 2208


**SANTA FE, NM 87504**

I, a legal clerk of the **Carlsbad Current Argus**, a newspaper published daily at the City of Carlsbad, in said county of Eddy, state of New Mexico and of general paid circulation in said county; that the same is a duly qualified newspaper under the laws of the State wherein legal notices and advertisements may be published; that the printed notice attached hereto was published in the regular and entire edition of said newspaper and not in supplement thereof in editions dated as follows:

**06/19/2022**

  
\_\_\_\_\_  
Legal Clerk

Subscribed and sworn before me this June 19, 2022:

  
\_\_\_\_\_  
State of WI, County of Brown  
NOTARY PUBLIC

1-7-25  
\_\_\_\_\_  
My commission expires

**KATHLEEN ALLEN**  
Notary Public  
State of Wisconsin

Ad # 0005304516  
PO #: Case No. 22876  
# of Affidavits 1

**This is not an invoice**

STATE OF NEW MEXICO  
ENERGY, MINERALS AND  
NATURAL RESOURCES  
DEPARTMENT  
OIL CONSERVATION  
DIVISION  
SANTA FE, NEW MEXICO

The State of New Mexico, Energy Minerals and Natural Resources Department, Oil Conservation Division ("Division") hereby gives notice that the Division will hold public hearings before a hearing examiner on the following case. During the COVID-19 Public Health Emergency, state buildings are closed to the public and Division hearings will be conducted remotely. The public hearing for the following case will be electronic and conducted remotely. The hearing will be conducted on Thursday, July 7, 2022, beginning at 8:15 a.m. To participate in the electronic hearing, see the instructions posted below. The docket may be viewed at <https://www.emnrd.nm.gov/ocd/hearing-info/> or obtained from Marlene Salvidrez, at [Marlene.Salvidrez@state.nm.us](mailto:Marlene.Salvidrez@state.nm.us). Documents filed in the case may be viewed at <https://ocdimage.emnrd.nm.gov/Imaging/Default.aspx>. If you are an individual with a disability who needs a reader, amplifier, qualified sign language interpreter, or other form of auxiliary aid or service to attend or participate in a hearing, contact Marlene Salvidrez at [Marlene.Salvidrez@state.nm.us](mailto:Marlene.Salvidrez@state.nm.us), or the New Mexico Relay Network at 1-800-659-1779, no later than June 27, 2022.

Persons may view and participate in the hearings through the following link:

<https://nmemnrd.webex.com/nmemnrd/onstage/g.php?MTID=e29a55db1164da76e4e10ed24585779e8>

Event number: 2498 639 5029  
Event password: K3bNFEgdM98

Join by video: 24986395029@nmemnrd.webex.com  
You can also dial 173.243.2.68 and enter your meeting number  
Numeric Password: 507711

Join by audio: 1-844-992-4726 United States Toll Free  
Access code: 2498 639 502

STATE OF NEW MEXICO TO:  
All named parties and persons having any right, title, interest or claim in the following case and notice to the public.

(NOTE: All land descriptions herein refer to the New Mexico Principal Meridian whether or not so stated.)

To: All interest owners subject to pooling proceedings, including: EOG Resources, Inc.; Berl T. Rogers, his heirs and devisees; Donna Bean, her heirs and devisees; E

her heirs and devisees; Estate of Lina Foltz, her heirs and devisees; Estate of Rathelle Foltz, her heirs and devisees; Glenda Sue Blake, her heirs and devisees; John P. Rogers, his heirs and devisees; John R. Rogers Jr., his heirs and devisees; Johnna Rogers, her heirs and devisees; Robin Rogers, his or her heirs and devisees; Barbara Mock, her heirs and devisees; DeVelva Bartlett Hampton, his or her heirs and devisees; Elaine April Adame, her heirs and devisees; Estate of Daniel Lewis Gooch, his heirs and devisees; Jason Tom Collins, his heirs and devisees; Jerri Ballard, his or her heirs and devisees; John D. Stribling, his heirs and devisees; Lou Ellen Daniels, her heirs and devisees; Matthew Collins, his heirs and devisees; Robert Duncan Cain, Jr., his heirs and devisees; Roger Ogburn, his heirs and devisees; and Sonya Marie Collins, her heirs and devisees.

Case No. 22876: (formerly Case 22053): Application of Matador Production Company to Amend Order R-21812 to Add Additional Pooled Parties, Eddy County, New Mexico. Applicant seeks an order from the Division amending Order R-21812 (issued in Case 22053) to add additional mineral owners to the terms of the pooling order. Order R-21812 pooled uncommitted mineral interests in the Bone Spring formation [Malaga; Bone Spring Pool (42780)] underlying a standard 320-acre horizontal spacing unit comprised of the S/2 N/2 of Sections 14 and 15, Township 24 South, Range 28 East, NMPM, Eddy County, New Mexico. This standard horizontal well spacing unit is currently dedicated to the Ken Wilson Com #112H well (API No. 30-015-48103) and the Ken Wilson Com #122H well (API No. 30-015-48106). This area is located near Malaga, New Mexico. #5304516, Current Argus, June 19, 2022