

STATE OF NEW MEXICO  
DEPARTMENT OF ENERGY, MINERALS AND NATURAL RESOURCES  
OIL CONSERVATION DIVISION

**APPLICATION OF LONGFELLOW ENERGY, LP  
TO AMEND ORDER NO. R-21837,  
EDDY COUNTY, NEW MEXICO**

**Case No. 22970  
Order No. R-21837  
(Re-Open)**



***Marley State Com 31 AB***  
001H, 002H, 003H, 004H, and 005H

Supplemental Affirmation of Landman Ryan Reynolds  
and Revised Form C-102s (Exhibit 4)

September 15, 2022

**STATE OF NEW MEXICO  
DEPARTMENT OF ENERGY, MINERALS AND NATURAL RESOURCES  
OIL CONSERVATION DIVISION**

**APPLICATION OF LONGFELLOW ENERGY, LP  
TO AMEND ORDER NO. R-21837,  
EDDY COUNTY, NEW MEXICO**

**Case No. 22970  
Order No. R-21837  
(Re-Open)**

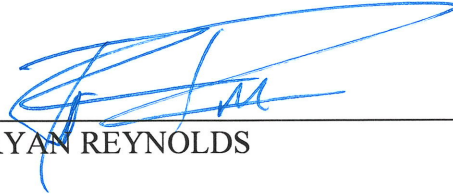
**SUPPLEMENTAL AFFIRMATION OF LANDMAN RYAN REYNOLDS**

I, being duly sworn on oath, state the following:

1. I am over the age of 18 and have the capacity to execute this Affirmation, which is based on my personal knowledge.
2. This affirmation is a supplement to my affidavit previously submitted in the above-referenced case, which was heard by the New Mexico Oil Conservation Division on August 4, 2022. It is submitted at the request of the hearing examiners at that hearing.
3. The revised surface hole locations for the proposed wells are as follows:
  - a. **Marley State Com 31 AB 001H**, to be horizontally drilled from an approximate surface hole location 1065' FNL and 1210' FEL of Section 36, T-17S-R27E.
  - b. **Marley State Com 31 AB 002H**, to be horizontally drilled from an approximate surface hole location 1085' FNL and 1210' FEL of Section 36, T-17S-R27E.
  - c. **Marley State Com 31 AB 003H**, to be horizontally drilled from an approximate surface hole location 1105' FNL and 1210' FEL of Section 36, T-17S-R27E.
  - d. **Marley State Com 31 AB 004H**, to be horizontally drilled from an approximate surface hole location 1125' FNL and 1210' FEL of Section 36, T-17S-R27E.
  - e. **Marley State Com 31 AB 005H**, to be horizontally drilled from an approximate surface hole location 2280' FSL and 1118' FEL of Section 36, T-17S-R27E.

4. The location of the proposed wells is depicted in revised C-102 Forms attached hereto as **Exhibit 4**. The C-102 Forms also indicate the locations of each surface hole, bottom hole, and the first and last take points.

I hereby affirm under penalty of perjury under the laws of the State of New Mexico that this statement is true and correct.



\_\_\_\_\_  
RYAN REYNOLDS

Dated: 9/15/2022

**District I**  
1625 N. French Dr., Hobbs, NM 88240  
Phone: (575) 393-6161 Fax: (575) 393-0720  
**District II**  
811 S. First St., Artesia, NM 88210  
Phone: (575) 748-1283 Fax: (575) 748-9720  
**District III**  
1000 Rio Brazos Road, Aztec, NM 87410  
Phone: (505) 334-6178 Fax: (505) 334-6170  
**District IV**  
1220 S. St. Francis Dr., Santa Fe, NM 87505  
Phone: (505) 476-3460 Fax: (505) 476-3462

State of New Mexico  
Energy, Minerals & Natural Resources Department  
**OIL CONSERVATION DIVISION**  
1220 South St. Francis Dr.  
Santa Fe, NM 87505

Form C-102  
Revised August 1, 2011  
Submit one copy to appropriate  
District Office

AMENDED REPORT

**WELL LOCATION AND ACREAGE DEDICATION PLAT**

|   |  |   |  |                        |   |
|---|--|---|--|------------------------|---|
| <sup>1</sup> API Number                 |  | <sup>2</sup> Pool Code                                      |  | <sup>3</sup> Pool Name |   |
| <sup>4</sup> Property Code              |  | <sup>5</sup> Property Name<br><b>MARLEY STATE COM 31 AB</b> |  |                        | <sup>6</sup> Well Number<br><b>001H</b> |
| <sup>7</sup> OGRID No.<br><b>372210</b> |  | <sup>8</sup> Operator Name<br><b>LONGFELLOW ENERGY, LP</b>  |  |                        | <sup>9</sup> Elevation<br><b>3624.1</b> |

<sup>10</sup> Surface Location

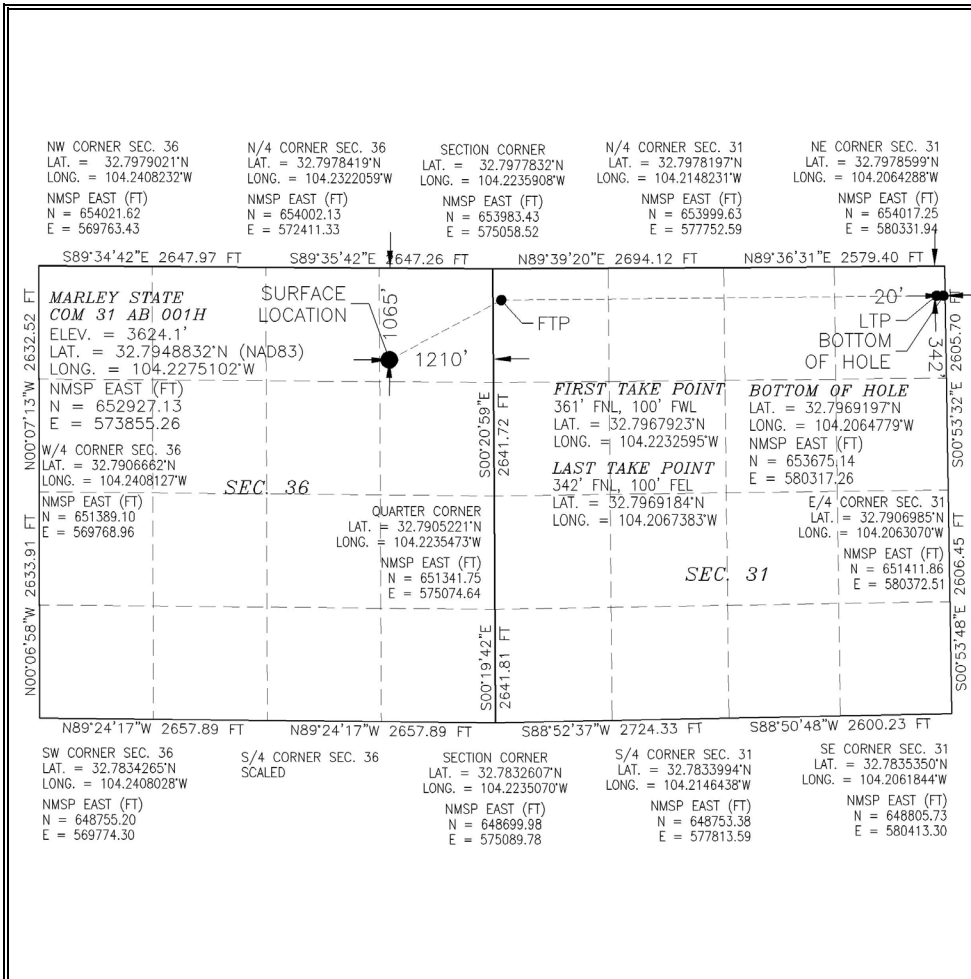
| UL or lot no. | Section   | Township    | Range       | Lot Idn | Feet from the | North/South line | Feet from the | East/West line | County      |
|---------------|-----------|-------------|-------------|---------|---------------|------------------|---------------|----------------|-------------|
| <b>A</b>      | <b>36</b> | <b>17 S</b> | <b>27 E</b> |         | <b>1065</b>   | <b>NORTH</b>     | <b>1210</b>   | <b>EAST</b>    | <b>EDDY</b> |

<sup>11</sup> Bottom Hole Location If Different From Surface

| UL or lot no. | Section   | Township    | Range       | Lot Idn | Feet from the | North/South line | Feet from the | East/West line | County      |
|---------------|-----------|-------------|-------------|---------|---------------|------------------|---------------|----------------|-------------|
| <b>A</b>      | <b>31</b> | <b>17 S</b> | <b>28 E</b> |         | <b>342</b>    | <b>NORTH</b>     | <b>20</b>     | <b>EAST</b>    | <b>EDDY</b> |

|                               |                               |                                  |                         |
|-------------------------------|-------------------------------|----------------------------------|-------------------------|
| <sup>12</sup> Dedicated Acres | <sup>13</sup> Joint or Infill | <sup>14</sup> Consolidation Code | <sup>15</sup> Order No. |
|-------------------------------|-------------------------------|----------------------------------|-------------------------|

No allowable will be assigned to this completion until all interests have been consolidated or a non-standard unit has been approved by the division.



**17 OPERATOR CERTIFICATION**  
I hereby certify that the information contained herein is true and complete to the best of my knowledge and belief, and that this organization either owns a working interest or unleased mineral interest in the land including the proposed bottom hole location or has a right to drill this well at this location pursuant to a contract with an owner of such a mineral or working interest, or to a voluntary pooling agreement or a compulsory pooling order heretofore entered by the division.

Signature \_\_\_\_\_ Date \_\_\_\_\_  
Printed Name \_\_\_\_\_  
E-mail Address \_\_\_\_\_

**18 SURVEYOR CERTIFICATION**  
I hereby certify that the well location shown on this plat was plotted from field notes of actual surveys made by me or under my supervision, and that the same is true and correct to the best of my belief.

AUGUST 29, 2022  
Date of Survey \_\_\_\_\_

Signature and Seal of Professional Surveyor:

Certificate Number: LS 12797

Intent  As Drilled

|   |  |                     |
|---|--|---------------------|
| API #                                   |  |                     |
| Operator Name:<br>LONGFELLOW ENERGY, LP | Property Name:<br>MARLEY STATE COM 31 AB | Well Number<br>001H |

Kick Off Point (KOP)

| UL       | Section | Township | Range | Lot | Feet      | From N/S | Feet | From E/W | County |
|----------|---------|----------|-------|-----|-----------|----------|------|----------|--------|
| Latitude |         |          |       |     | Longitude |          |      |          | NAD    |

First Take Point (FTP)

| UL                     | Section | Township | Range | Lot | Feet                     | From N/S | Feet | From E/W | County    |
|------------------------|---------|----------|-------|-----|--------------------------|----------|------|----------|-----------|
|                        | 31      | 17S      | 28E   | 1   | 361                      | NORTH    | 100  | WEST     | EDDY      |
| Latitude<br>32.7967923 |         |          |       |     | Longitude<br>104.2232595 |          |      |          | NAD<br>83 |

Last Take Point (LTP)

| UL                     | Section | Township | Range | Lot | Feet                     | From N/S | Feet | From E/W | County    |
|------------------------|---------|----------|-------|-----|--------------------------|----------|------|----------|-----------|
| A                      | 31      | 17S      | 28E   |     | 342                      | NORTH    | 100  | EAST     | EDDY      |
| Latitude<br>32.7969184 |         |          |       |     | Longitude<br>104.2067383 |          |      |          | NAD<br>83 |

Is this well the defining well for the Horizontal Spacing Unit?

Is this well an infill well?

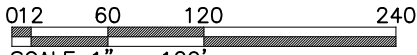
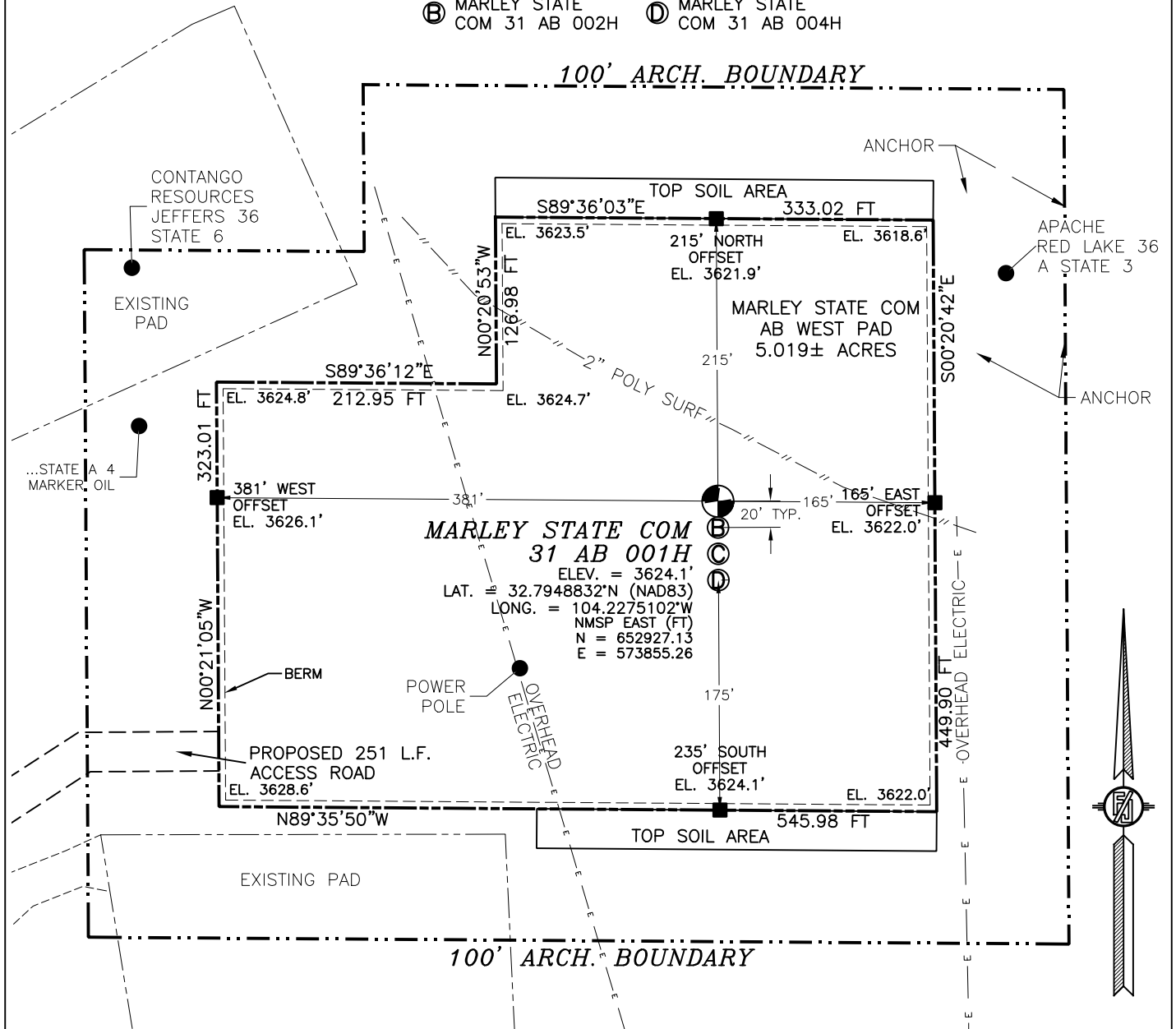
If infill is yes please provide API if available, Operator Name and well number for Defining well for Horizontal Spacing Unit.

|                |                |             |
|----------------|----------------|-------------|
| API #          |                |             |
| Operator Name: | Property Name: | Well Number |

KZ 06/29/2018

# SECTION 36, TOWNSHIP 17 SOUTH, RANGE 27 EAST, N.M.P.M. EDDY COUNTY, STATE OF NEW MEXICO SITE MAP

- Ⓐ MARLEY STATE COM 31 AB 001H
- Ⓑ MARLEY STATE COM 31 AB 002H
- Ⓒ MARLEY STATE COM 31 AB 003H
- Ⓓ MARLEY STATE COM 31 AB 004H



**DIRECTIONS TO LOCATION**  
 FROM THE INTERSECTION OF CR. 225 (HILLTOP RD.) & CR. 226 (EVANS), GO NORTHWEST ON CR. 225 APPROX. 0.28 MILES TO A PROPOSED ROAD SURVEY ON RIGHT (NORTH EAST, JUST NORTH OF EXISTING CALICHE DRIVEWAY). FOLLOW ROAD SURVEY NORTHEAST AND EAST APPROX. 251' TO THE SOUTHWEST PAD CORNER FOR THIS LOCATION.

I, FILIMON F. JARAMILLO, A NEW MEXICO REGISTERED PROFESSIONAL SURVEYOR CERTIFY THAT I HAVE PERSONALLY CONDUCTED THIS SURVEY, THAT I AM A MEMBER IN GOOD STANDING OF THE BOARD OF SURVEYING AND MAPPING, AND THAT I AM AWARE OF MY KNOWLEDGE AND BELIEVE THIS SURVEY TO MEET THE MINIMUM STANDARDS FOR THE STATE OF NEW MEXICO.

FILIMON F. JARAMILLO 10155 2778

**MADISON SURVEYING, INC.**

301 SOUTH CANAL  
(575) 234-3341

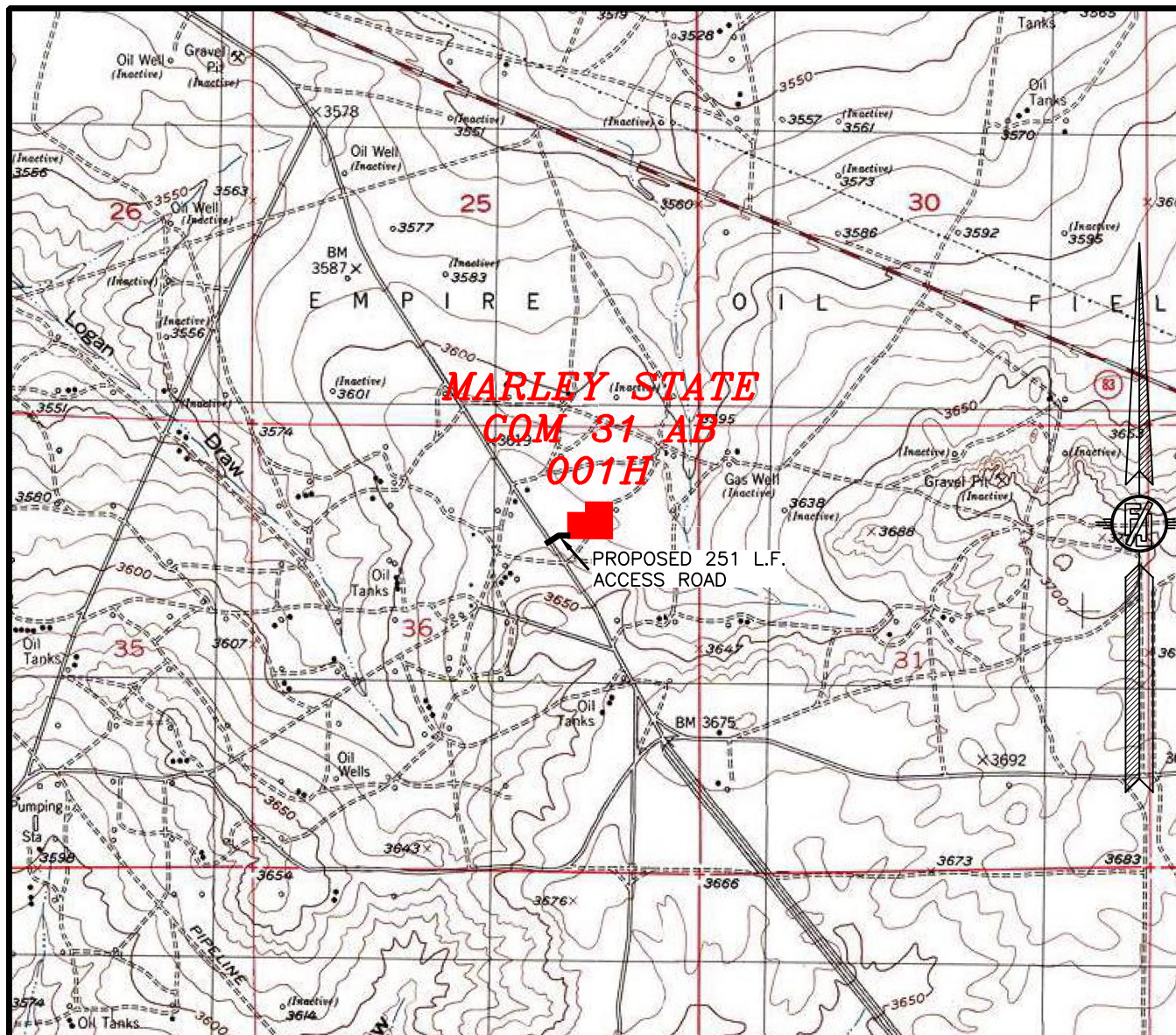
**CARLSBAD, NEW MEXICO**

**LONGFELLOW ENERGY, LP**  
**MARLEY STATE COM 31 AB 001H**  
 LOCATED 1065 FT. FROM THE NORTH LINE  
 AND 1210 FT. FROM THE EAST LINE OF  
 SECTION 36, TOWNSHIP 17 SOUTH,  
 RANGE 27 EAST, N.M.P.M.  
 EDDY COUNTY, STATE OF NEW MEXICO

AUGUST 29, 2022

SURVEY NO. 8806C

SECTION 36, TOWNSHIP 17 SOUTH, RANGE 27 EAST, N.M.P.M.  
EDDY COUNTY, STATE OF NEW MEXICO  
LOCATION VERIFICATION MAP



USGS QUAD MAP:  
RED LAKE

NOT TO SCALE

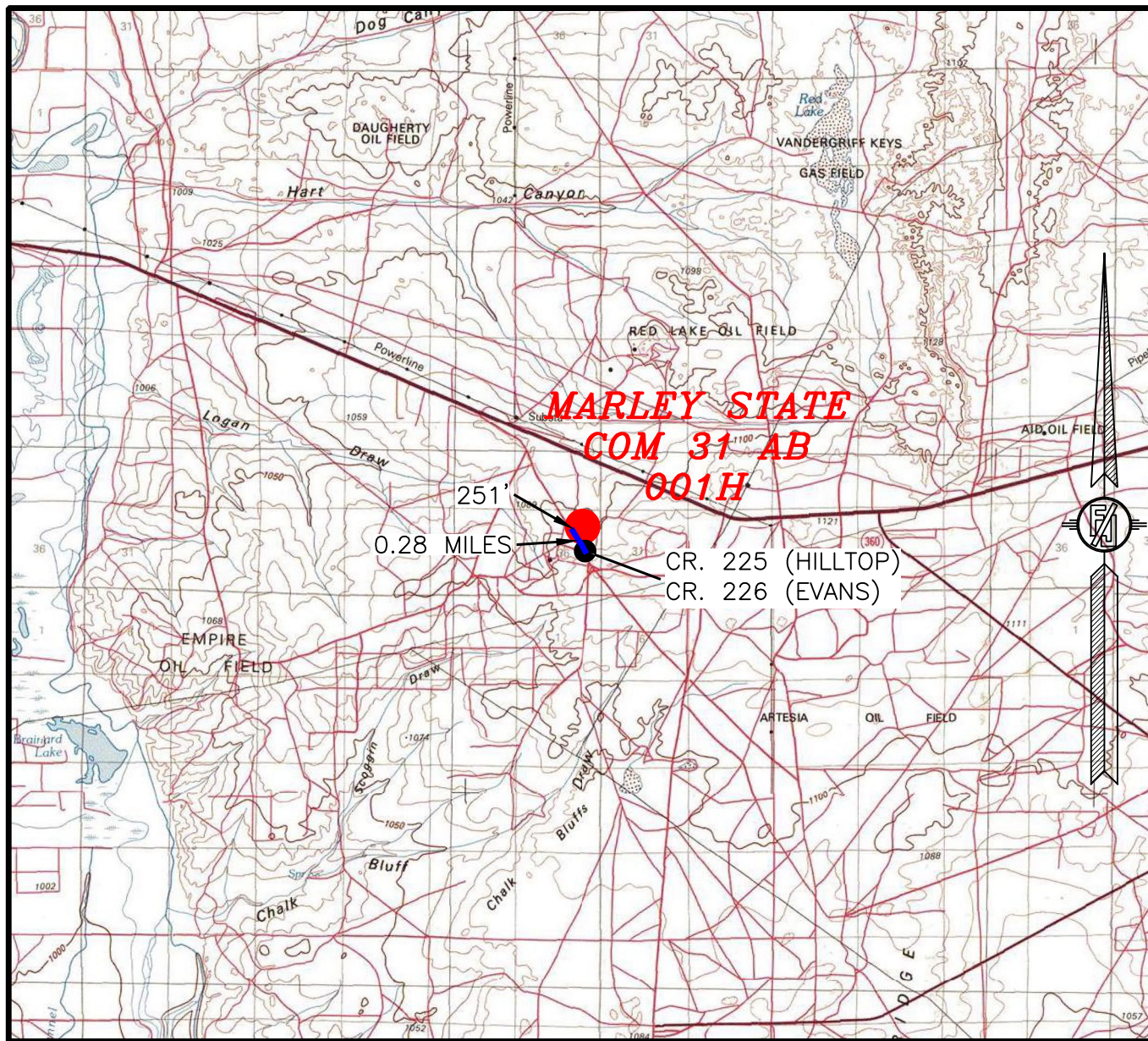
LONGFELLOW ENERGY, LP  
MARLEY STATE COM 31 AB 001H  
LOCATED 1065 FT. FROM THE NORTH LINE  
AND 1210 FT. FROM THE EAST LINE OF  
SECTION 36, TOWNSHIP 17 SOUTH,  
RANGE 27 EAST, N.M.P.M.  
EDDY COUNTY, STATE OF NEW MEXICO

AUGUST 29, 2022

SURVEY NO. 8806C

MADRON SURVEYING, INC. 301 SOUTH CANAL CARLSBAD, NEW MEXICO  
(575) 234-3341

# SECTION 36, TOWNSHIP 17 SOUTH, RANGE 27 EAST, N.M.P.M. EDDY COUNTY, STATE OF NEW MEXICO VICINITY MAP



DISTANCES IN MILES

NOT TO SCALE

### DIRECTIONS TO LOCATION

FROM THE INTERSECTION OF CR. 225 (HILLTOP RD.) & CR. 226 (EVANS), GO NORTHWEST ON CR. 225 APPROX. 0.28 MILES TO A PROPOSED ROAD SURVEY ON RIGHT (NORTHEAST, JUST NORTH OF EXISTING CALICHE DRIVEWAY), FOLLOW ROAD SURVEY NORTHEAST AND EAST APPROX. 251' TO THE SOUTHWEST PAD CORNER FOR THIS LOCATION.

**LONGFELLOW ENERGY, LP**  
**MARLEY STATE COM 31 AB 001H**  
 LOCATED 1065 FT. FROM THE NORTH LINE  
 AND 1210 FT. FROM THE EAST LINE OF  
 SECTION 36, TOWNSHIP 17 SOUTH,  
 RANGE 27 EAST, N.M.P.M.  
 EDDY COUNTY, STATE OF NEW MEXICO

AUGUST 29, 2022

MADRON SURVEYING, INC.

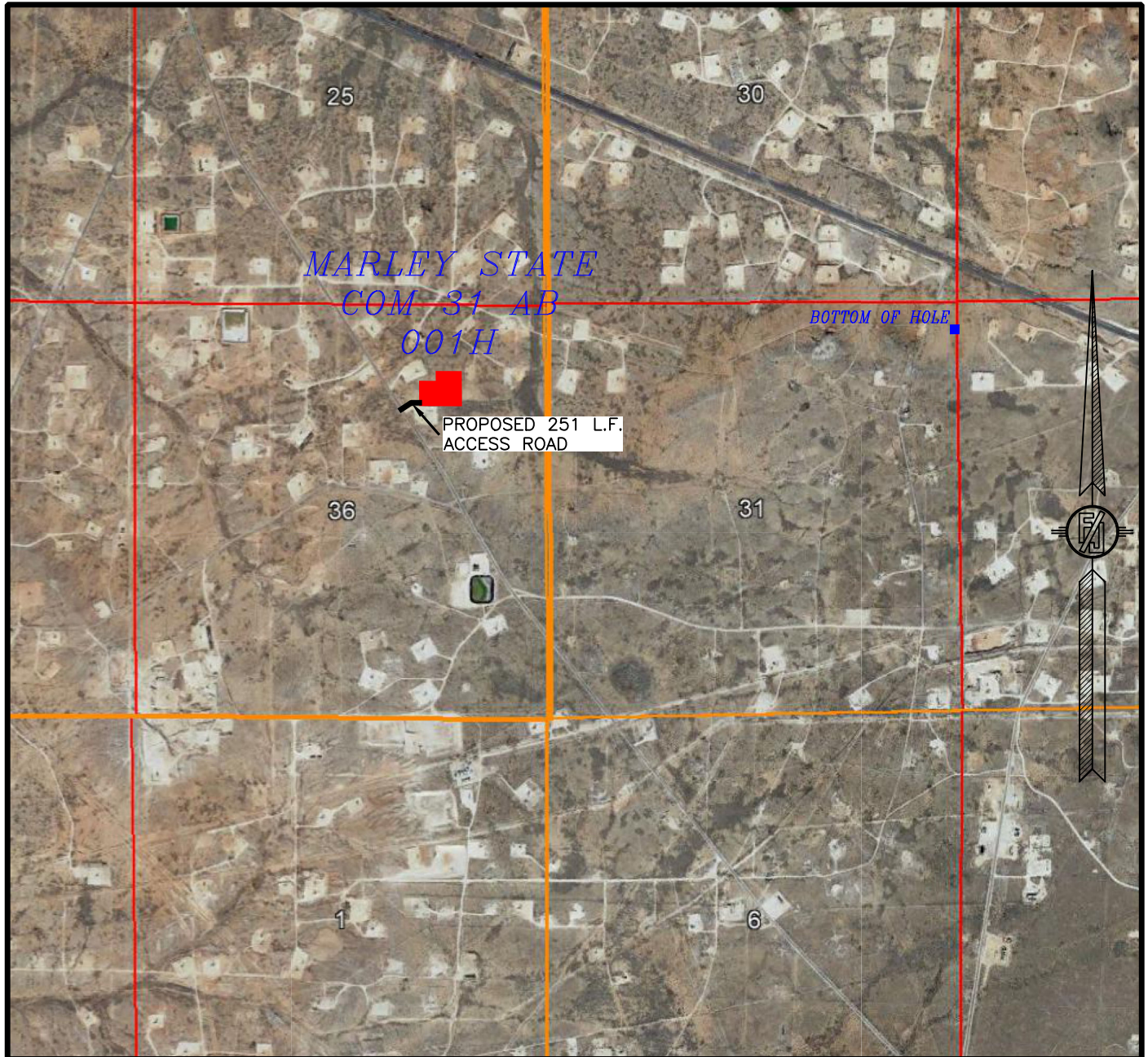
301 SOUTH CANAL  
(575) 234-3341

CARLSBAD, NEW MEXICO

SURVEY NO. 8806C



SECTION 36, TOWNSHIP 17 SOUTH, RANGE 27 EAST, N.M.P.M.  
EDDY COUNTY, STATE OF NEW MEXICO  
AERIAL PHOTO



NOT TO SCALE  
AERIAL PHOTO:  
GOOGLE EARTH  
DEC. 2019

**LONGFELLOW ENERGY, LP**  
**MARLEY STATE COM 31 AB 001H**  
LOCATED 1065 FT. FROM THE NORTH LINE  
AND 1210 FT. FROM THE EAST LINE OF  
SECTION 36, TOWNSHIP 17 SOUTH,  
RANGE 27 EAST, N.M.P.M.  
EDDY COUNTY, STATE OF NEW MEXICO

AUGUST 29, 2022

SURVEY NO. 8806C

MADRON SURVEYING, INC. 301 SOUTH CANAL CARLSBAD, NEW MEXICO  
(575) 234-3341

SECTION 36, TOWNSHIP 17 SOUTH, RANGE 27 EAST, N.M.P.M.  
EDDY COUNTY, STATE OF NEW MEXICO  
AERIAL ACCESS ROUTE MAP



NOT TO SCALE  
AERIAL PHOTO:  
GOOGLE EARTH  
DEC. 2019

**LONGFELLOW ENERGY, LP**  
**MARLEY STATE COM 31 AB 001H**  
LOCATED 1065 FT. FROM THE NORTH LINE  
AND 1210 FT. FROM THE EAST LINE OF  
SECTION 36, TOWNSHIP 17 SOUTH,  
RANGE 27 EAST, N.M.P.M.  
EDDY COUNTY, STATE OF NEW MEXICO

AUGUST 29, 2022

SURVEY NO. 8806C

MADRON SURVEYING, INC. 301 SOUTH CANAL CARLSBAD, NEW MEXICO  
(575) 234-3341

**District I**  
1625 N. French Dr., Hobbs, NM 88240  
Phone: (575) 393-6161 Fax: (575) 393-0720  
**District II**  
811 S. First St., Artesia, NM 88210  
Phone: (575) 748-1283 Fax: (575) 748-9720  
**District III**  
1000 Rio Brazos Road, Aztec, NM 87410  
Phone: (505) 334-6178 Fax: (505) 334-6170  
**District IV**  
1220 S. St. Francis Dr., Santa Fe, NM 87505  
Phone: (505) 476-3460 Fax: (505) 476-3462

State of New Mexico  
Energy, Minerals & Natural Resources Department  
**OIL CONSERVATION DIVISION**  
1220 South St. Francis Dr.  
Santa Fe, NM 87505

Form C-102  
Revised August 1, 2011  
Submit one copy to appropriate  
District Office

AMENDED REPORT

**WELL LOCATION AND ACREAGE DEDICATION PLAT**

|   |  |   |  |                        |   |
|---|--|---|--|------------------------|---|
| <sup>1</sup> API Number                 |  | <sup>2</sup> Pool Code                                      |  | <sup>3</sup> Pool Name |   |
| <sup>4</sup> Property Code              |  | <sup>5</sup> Property Name<br><b>MARLEY STATE COM 31 AB</b> |  |                        | <sup>6</sup> Well Number<br><b>002H</b> |
| <sup>7</sup> OGRID No.<br><b>372210</b> |  | <sup>8</sup> Operator Name<br><b>LONGFELLOW ENERGY, LP</b>  |  |                        | <sup>9</sup> Elevation<br><b>3624.5</b> |

<sup>10</sup> Surface Location

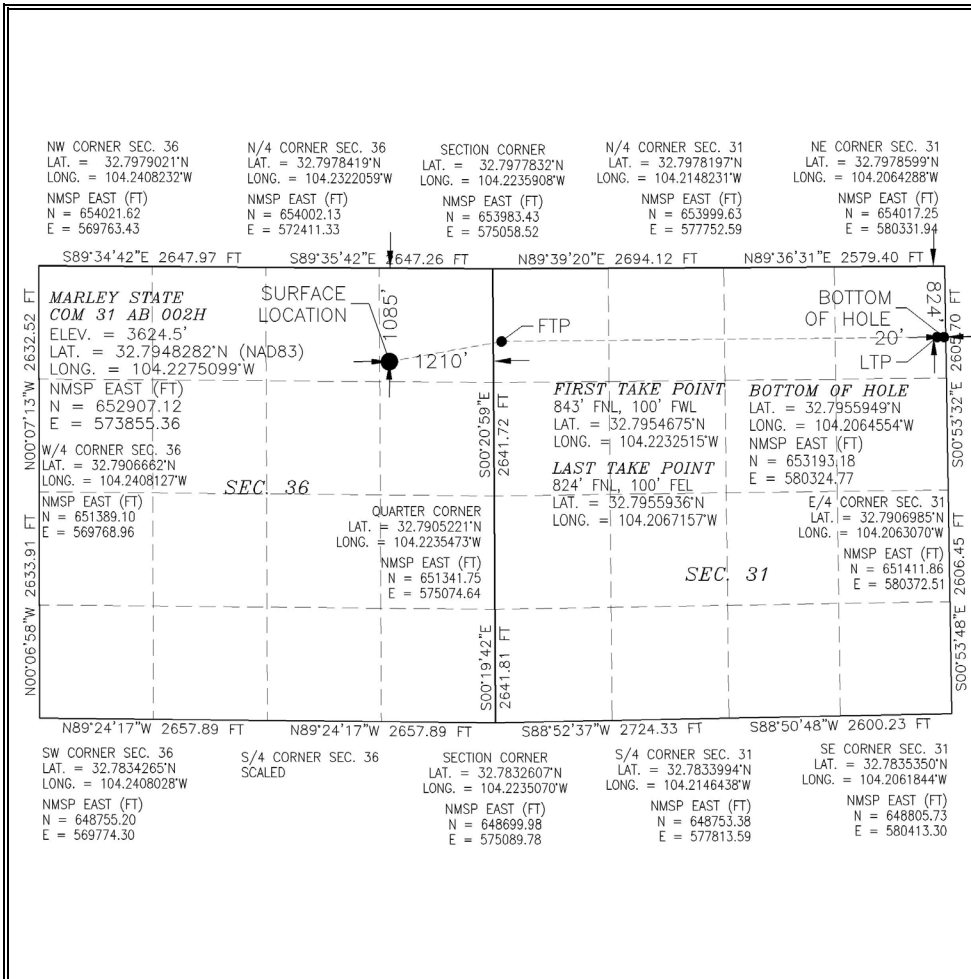
| UL or lot no. | Section   | Township    | Range       | Lot Idn | Feet from the | North/South line | Feet from the | East/West line | County      |
|---------------|-----------|-------------|-------------|---------|---------------|------------------|---------------|----------------|-------------|
| <b>A</b>      | <b>36</b> | <b>17 S</b> | <b>27 E</b> |         | <b>1085</b>   | <b>NORTH</b>     | <b>1210</b>   | <b>EAST</b>    | <b>EDDY</b> |

<sup>11</sup> Bottom Hole Location If Different From Surface

| UL or lot no. | Section   | Township    | Range       | Lot Idn | Feet from the | North/South line | Feet from the | East/West line | County      |
|---------------|-----------|-------------|-------------|---------|---------------|------------------|---------------|----------------|-------------|
| <b>A</b>      | <b>31</b> | <b>17 S</b> | <b>28 E</b> |         | <b>824</b>    | <b>NORTH</b>     | <b>20</b>     | <b>EAST</b>    | <b>EDDY</b> |

|                               |                               |                                  |                         |
|-------------------------------|-------------------------------|----------------------------------|-------------------------|
| <sup>12</sup> Dedicated Acres | <sup>13</sup> Joint or Infill | <sup>14</sup> Consolidation Code | <sup>15</sup> Order No. |
|-------------------------------|-------------------------------|----------------------------------|-------------------------|

No allowable will be assigned to this completion until all interests have been consolidated or a non-standard unit has been approved by the division.



**<sup>17</sup> OPERATOR CERTIFICATION**

I hereby certify that the information contained herein is true and complete to the best of my knowledge and belief, and that this organization either owns a working interest or unleased mineral interest in the land including the proposed bottom hole location or has a right to drill this well at this location pursuant to a contract with an owner of such a mineral or working interest, or to a voluntary pooling agreement or a compulsory pooling order heretofore entered by the division.

Signature \_\_\_\_\_ Date \_\_\_\_\_

Printed Name \_\_\_\_\_

E-mail Address \_\_\_\_\_

**<sup>18</sup> SURVEYOR CERTIFICATION**

I hereby certify that the well location shown on this plat was plotted from field notes of actual surveys made by me or under my supervision, and that the same is true and correct to the best of my belief.

AUGUST 29, 2022

Date of Survey \_\_\_\_\_

Signature and Seal of Professional Surveyor:

Certificate Number: 12797

Intent  As Drilled

|   |  |                     |
|---|--|---------------------|
| API #                                   |  |                     |
| Operator Name:<br>LONGFELLOW ENERGY, LP | Property Name:<br>MARLEY STATE COM 31 AB | Well Number<br>002H |

Kick Off Point (KOP)

| UL       | Section | Township | Range | Lot | Feet      | From N/S | Feet | From E/W | County |
|----------|---------|----------|-------|-----|-----------|----------|------|----------|--------|
| Latitude |         |          |       |     | Longitude |          |      |          | NAD    |

First Take Point (FTP)

| UL                     | Section | Township | Range | Lot | Feet                     | From N/S | Feet | From E/W | County    |
|------------------------|---------|----------|-------|-----|--------------------------|----------|------|----------|-----------|
|                        | 31      | 17S      | 28E   | 1   | 843                      | NORTH    | 100  | WEST     | EDDY      |
| Latitude<br>32.7954675 |         |          |       |     | Longitude<br>104.2232515 |          |      |          | NAD<br>83 |

Last Take Point (LTP)

| UL                     | Section | Township | Range | Lot | Feet                     | From N/S | Feet | From E/W | County    |
|------------------------|---------|----------|-------|-----|--------------------------|----------|------|----------|-----------|
| A                      | 31      | 17S      | 28E   |     | 824                      | NORTH    | 100  | EAST     | EDDY      |
| Latitude<br>32.7955936 |         |          |       |     | Longitude<br>104.2067157 |          |      |          | NAD<br>83 |

Is this well the defining well for the Horizontal Spacing Unit?

Is this well an infill well?

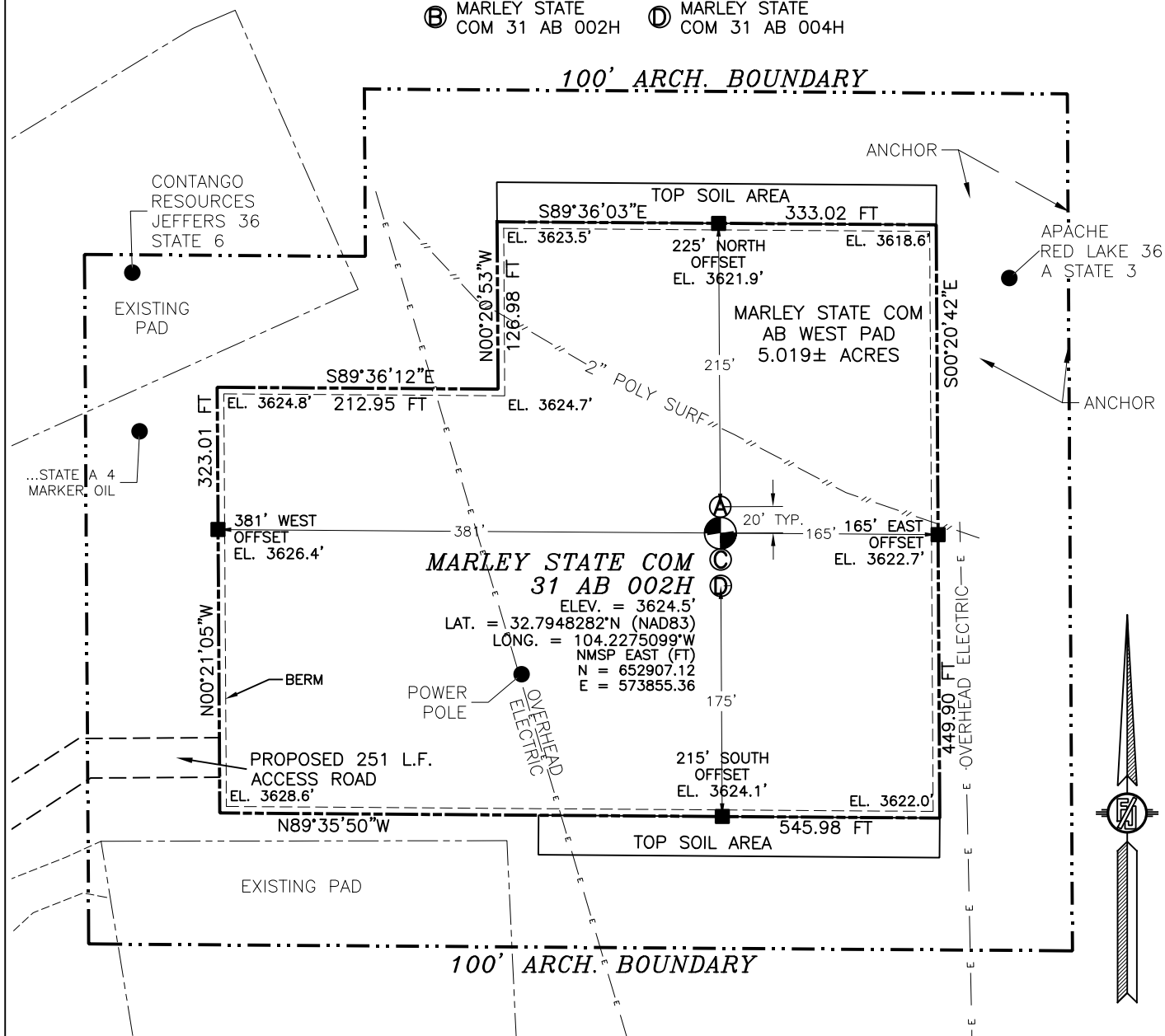
If infill is yes please provide API if available, Operator Name and well number for Defining well for Horizontal Spacing Unit.

|                |                |             |
|----------------|----------------|-------------|
| API #          |                |             |
| Operator Name: | Property Name: | Well Number |

KZ 06/29/2018

# SECTION 36, TOWNSHIP 17 SOUTH, RANGE 27 EAST, N.M.P.M. EDDY COUNTY, STATE OF NEW MEXICO SITE MAP

- Ⓐ MARLEY STATE COM 31 AB 001H
- Ⓑ MARLEY STATE COM 31 AB 002H
- Ⓒ MARLEY STATE COM 31 AB 003H
- Ⓓ MARLEY STATE COM 31 AB 004H



0 12 60 120 240

SCALE 1" = 120'

### DIRECTIONS TO LOCATION

FROM THE INTERSECTION OF CR. 225 (HILLTOP RD.) & CR. 226 (EVANS), GO NORTHWEST ON CR. 225 APPROX. 0.28 MILES TO A PROPOSED ROAD SURVEY ON THE RIGHT (NORTH EAST, JUST NORTH OF EXISTING CALICHE DRIVEWAY). FOLLOW ROAD SURVEY NORTHEAST AND EAST APPROX. 251' TO THE SOUTHWEST PAD CORNER FOR THIS LOCATION.

I, FILIMON F. JARAMILLO, A NEW MEXICO REGISTERED PROFESSIONAL SURVEYOR, CERTIFY THAT I HAVE PERSONALLY CONDUCTED THIS SURVEY, THAT I AM A MEMBER IN GOOD STANDING OF THE BOARD OF SURVEYING AND MAPPING, AND THAT I AM AWARE OF MY KNOWLEDGE AND BELIEVE THIS SURVEY TO MEET THE MINIMUM STANDARDS FOR THE STATE OF NEW MEXICO.

FILIMON F. JARAMILLO 10155 2738

**MADISON SURVEYING, INC.**

301 SOUTH CANAL  
(575) 234-3341

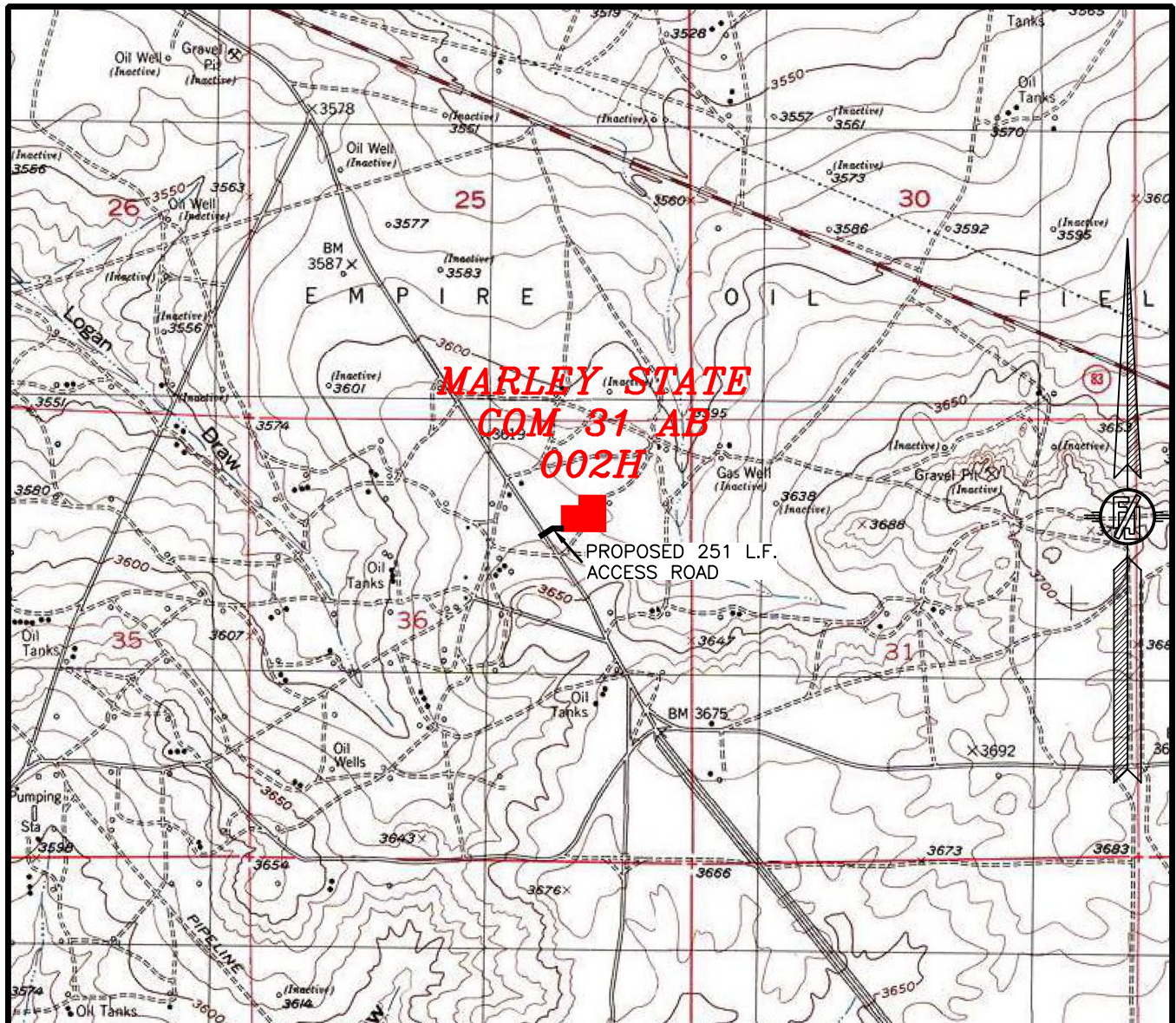
**CARLSBAD, NEW MEXICO**

LONGFELLOW ENERGY, LP  
**MARLEY STATE COM 31 AB 002H**  
 LOCATED 1085 FT. FROM THE NORTH LINE  
 AND 1210 FT. FROM THE EAST LINE OF  
 SECTION 36, TOWNSHIP 17 SOUTH,  
 RANGE 27 EAST, N.M.P.M.  
 EDDY COUNTY, STATE OF NEW MEXICO

AUGUST 29, 2022

SURVEY NO. 8807C

SECTION 36, TOWNSHIP 17 SOUTH, RANGE 27 EAST, N.M.P.M.  
EDDY COUNTY, STATE OF NEW MEXICO  
LOCATION VERIFICATION MAP



USGS QUAD MAP:  
RED LAKE

NOT TO SCALE

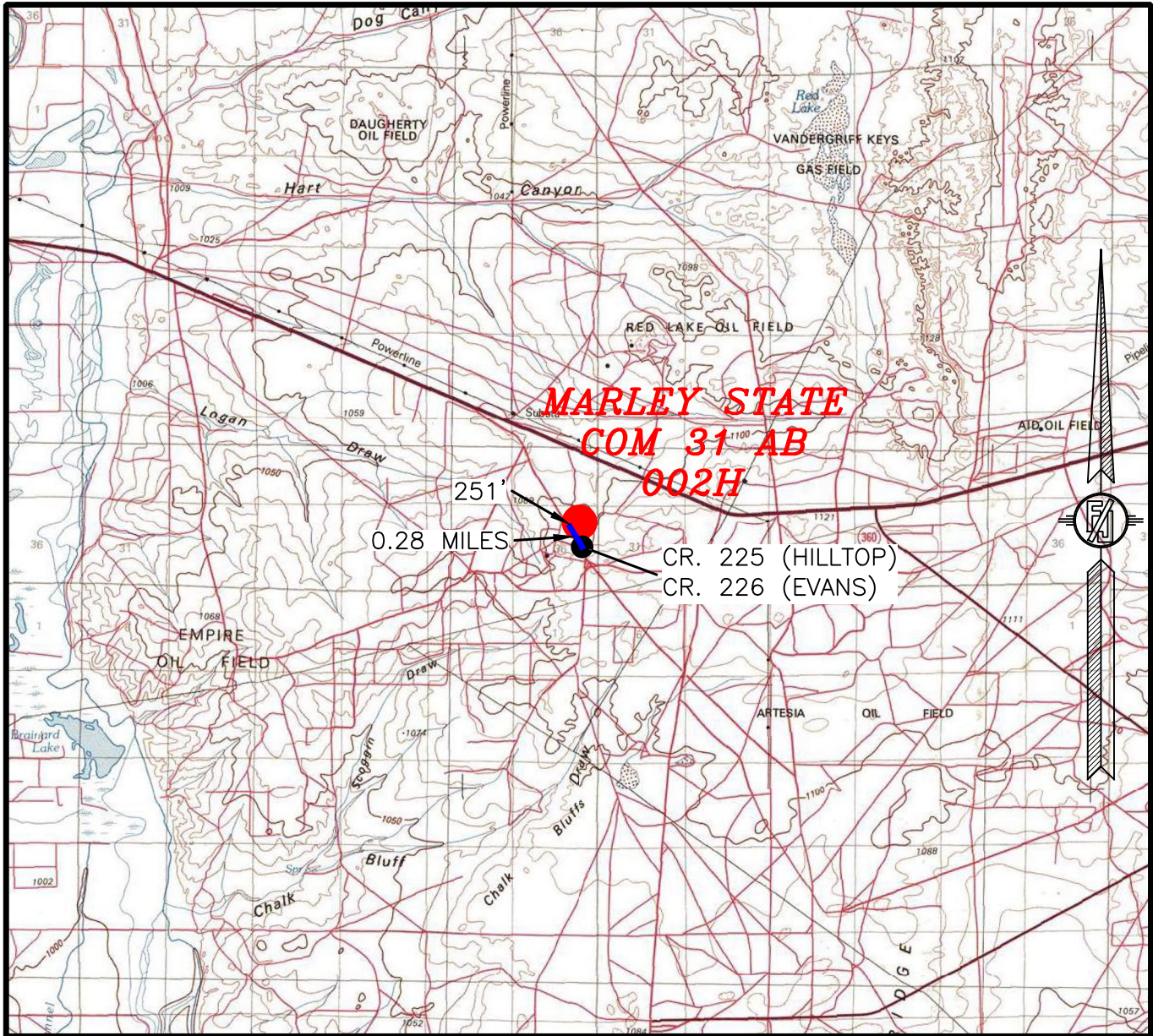
LONGFELLOW ENERGY, LP  
MARLEY STATE COM 31 AB 002H  
LOCATED 1085 FT. FROM THE NORTH LINE  
AND 1210 FT. FROM THE EAST LINE OF  
SECTION 36, TOWNSHIP 17 SOUTH,  
RANGE 27 EAST, N.M.P.M.  
EDDY COUNTY, STATE OF NEW MEXICO

AUGUST 29, 2022

SURVEY NO. 8807C

MADRON SURVEYING, INC. 301 SOUTH CANAL CARLSBAD, NEW MEXICO  
(575) 234-3341

SECTION 36, TOWNSHIP 17 SOUTH, RANGE 27 EAST, N.M.P.M.  
EDDY COUNTY, STATE OF NEW MEXICO  
VICINITY MAP



DISTANCES IN MILES

NOT TO SCALE

**DIRECTIONS TO LOCATION**

FROM THE INTERSECTION OF CR. 225 (HILLTOP RD.) & CR. 226 (EVANS), GO NORTHWEST ON CR. 225 APPROX. 0.28 MILES TO A PROPOSED ROAD SURVEY ON RIGHT (NORTHEAST, JUST NORTH OF EXISTING CALICHE DRIVEWAY), FOLLOW ROAD SURVEY NORTHEAST AND EAST APPROX. 251' TO THE SOUTHWEST PAD CORNER FOR THIS LOCATION.

**LONGFELLOW ENERGY, LP**  
**MARLEY STATE COM 31 AB 002H**  
LOCATED 1085 FT. FROM THE NORTH LINE  
AND 1210 FT. FROM THE EAST LINE OF  
SECTION 36, TOWNSHIP 17 SOUTH,  
RANGE 27 EAST, N.M.P.M.  
EDDY COUNTY, STATE OF NEW MEXICO

AUGUST 29, 2022

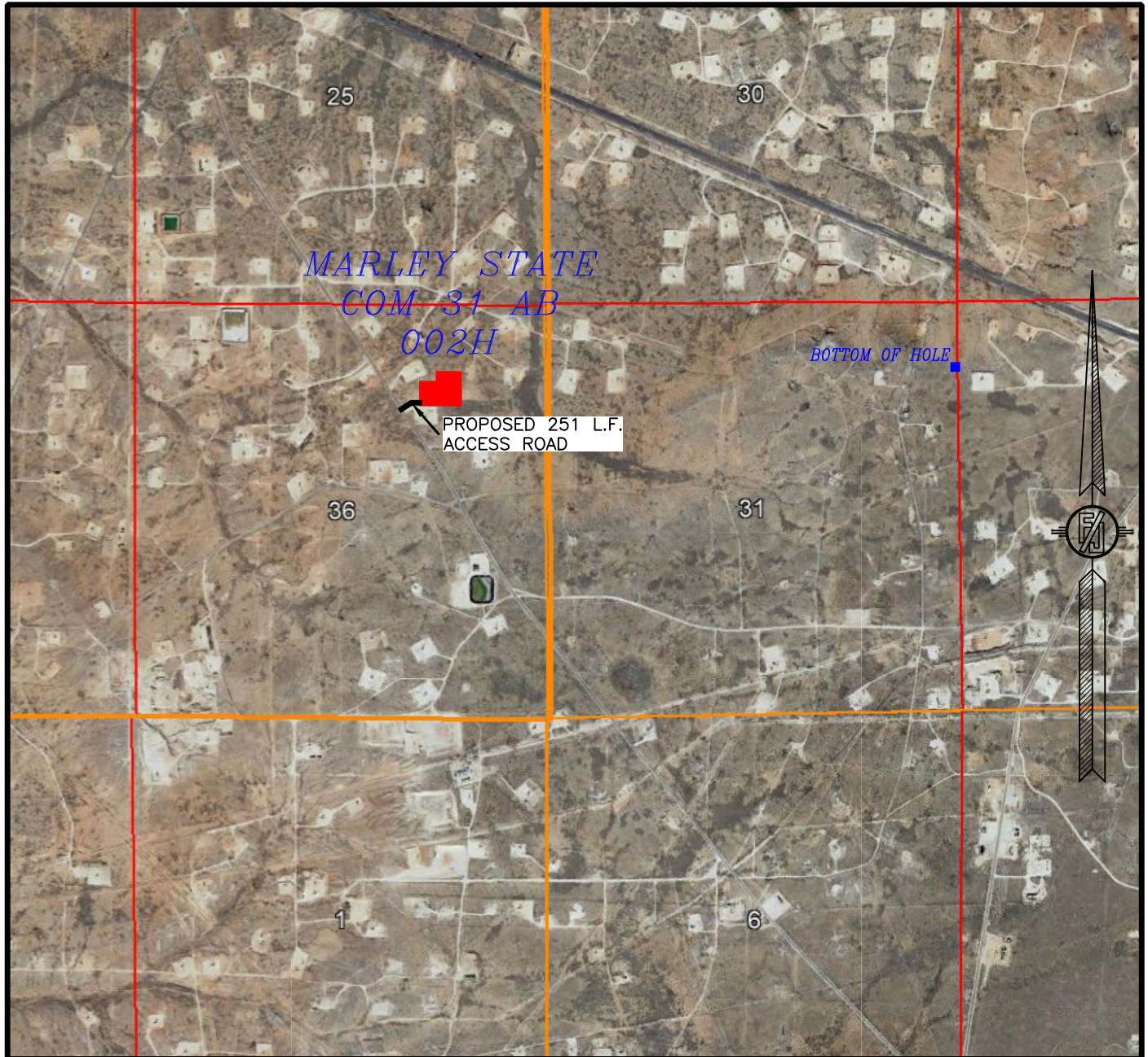
MADRON SURVEYING, INC.

301 SOUTH CANAL  
(575) 234-3341

CARLSBAD, NEW MEXICO

SURVEY NO. 8807C

SECTION 36, TOWNSHIP 17 SOUTH, RANGE 27 EAST, N.M.P.M.  
EDDY COUNTY, STATE OF NEW MEXICO  
AERIAL PHOTO



NOT TO SCALE  
AERIAL PHOTO:  
GOOGLE EARTH  
DEC. 2019

**LONGFELLOW ENERGY, LP**  
**MARLEY STATE COM 31 AB 002H**  
LOCATED 1085 FT. FROM THE NORTH LINE  
AND 1210 FT. FROM THE EAST LINE OF  
SECTION 36, TOWNSHIP 17 SOUTH,  
RANGE 27 EAST, N.M.P.M.  
EDDY COUNTY, STATE OF NEW MEXICO

AUGUST 29, 2022

SURVEY NO. 8807C

MADRON SURVEYING, INC. 301 SOUTH CANAL CARLSBAD, NEW MEXICO  
(575) 234-3341



SECTION 36, TOWNSHIP 17 SOUTH, RANGE 27 EAST, N.M.P.M.  
EDDY COUNTY, STATE OF NEW MEXICO  
AERIAL ACCESS ROUTE MAP



NOT TO SCALE  
AERIAL PHOTO:  
GOOGLE EARTH  
DEC. 2019

**LONGFELLOW ENERGY, LP**  
**MARLEY STATE COM 31 AB 002H**  
LOCATED 1085 FT. FROM THE NORTH LINE  
AND 1210 FT. FROM THE EAST LINE OF  
SECTION 36, TOWNSHIP 17 SOUTH,  
RANGE 27 EAST, N.M.P.M.  
EDDY COUNTY, STATE OF NEW MEXICO

AUGUST 29, 2022

SURVEY NO. 8807C

MADRON SURVEYING, INC. 301 SOUTH CANAL CARLSBAD, NEW MEXICO  
(575) 234-3341

**District I**  
1625 N. French Dr., Hobbs, NM 88240  
Phone: (575) 393-6161 Fax: (575) 393-0720  
**District II**  
811 S. First St., Artesia, NM 88210  
Phone: (575) 748-1283 Fax: (575) 748-9720  
**District III**  
1000 Rio Brazos Road, Aztec, NM 87410  
Phone: (505) 334-6178 Fax: (505) 334-6170  
**District IV**  
1220 S. St. Francis Dr., Santa Fe, NM 87505  
Phone: (505) 476-3460 Fax: (505) 476-3462

State of New Mexico  
Energy, Minerals & Natural Resources Department  
**OIL CONSERVATION DIVISION**  
1220 South St. Francis Dr.  
Santa Fe, NM 87505

Form C-102  
Revised August 1, 2011  
Submit one copy to appropriate  
District Office

AMENDED REPORT

**WELL LOCATION AND ACREAGE DEDICATION PLAT**

|   |  |   |  |                        |   |
|---|--|---|--|------------------------|---|
| <sup>1</sup> API Number                 |  | <sup>2</sup> Pool Code                                      |  | <sup>3</sup> Pool Name |   |
| <sup>4</sup> Property Code              |  | <sup>5</sup> Property Name<br><b>MARLEY STATE COM 31 AB</b> |  |                        | <sup>6</sup> Well Number<br><b>003H</b> |
| <sup>7</sup> OGRID No.<br><b>372210</b> |  | <sup>8</sup> Operator Name<br><b>LONGFELLOW ENERGY, LP</b>  |  |                        | <sup>9</sup> Elevation<br><b>3625.1</b> |

<sup>10</sup> Surface Location

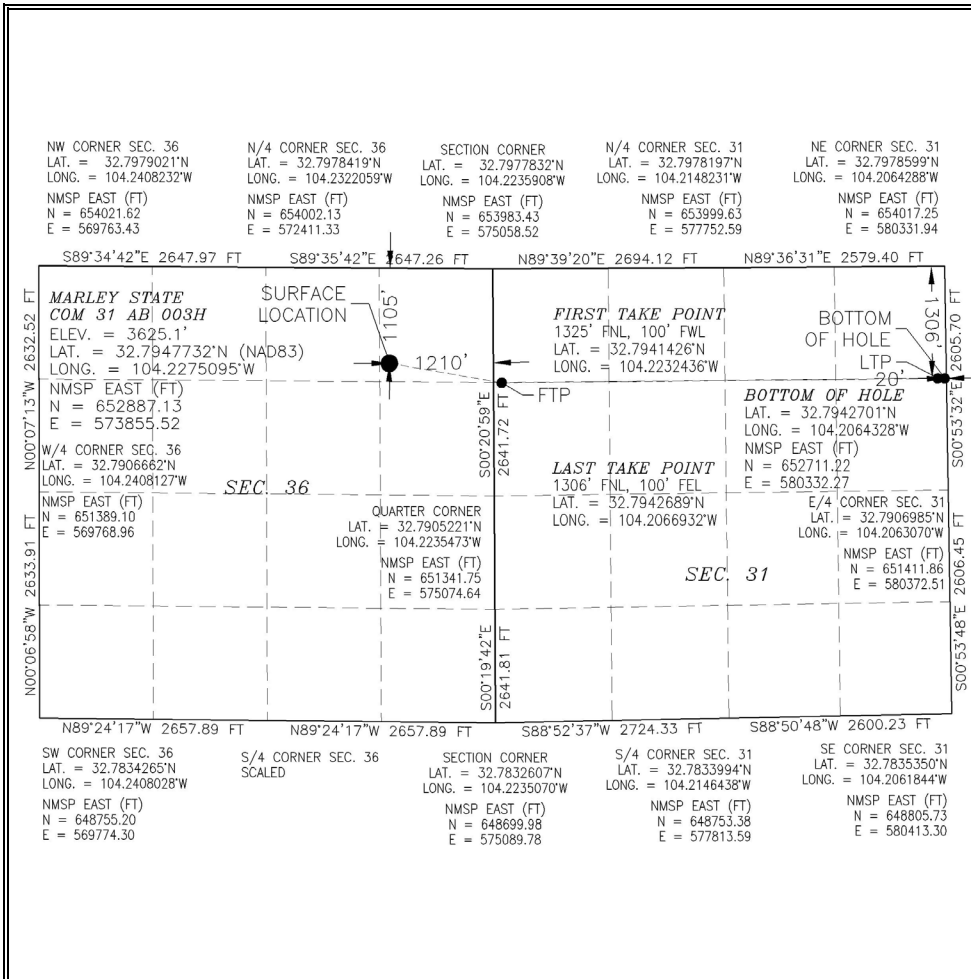
| UL or lot no. | Section   | Township    | Range       | Lot Idn | Feet from the | North/South line | Feet from the | East/West line | County      |
|---------------|-----------|-------------|-------------|---------|---------------|------------------|---------------|----------------|-------------|
| <b>A</b>      | <b>36</b> | <b>17 S</b> | <b>27 E</b> |         | <b>1105</b>   | <b>NORTH</b>     | <b>1210</b>   | <b>EAST</b>    | <b>EDDY</b> |

<sup>11</sup> Bottom Hole Location If Different From Surface

| UL or lot no. | Section   | Township    | Range       | Lot Idn | Feet from the | North/South line | Feet from the | East/West line | County      |
|---------------|-----------|-------------|-------------|---------|---------------|------------------|---------------|----------------|-------------|
| <b>H</b>      | <b>31</b> | <b>17 S</b> | <b>28 E</b> |         | <b>1306</b>   | <b>NORTH</b>     | <b>20</b>     | <b>EAST</b>    | <b>EDDY</b> |

|                               |                               |                                  |                         |
|-------------------------------|-------------------------------|----------------------------------|-------------------------|
| <sup>12</sup> Dedicated Acres | <sup>13</sup> Joint or Infill | <sup>14</sup> Consolidation Code | <sup>15</sup> Order No. |
|-------------------------------|-------------------------------|----------------------------------|-------------------------|

No allowable will be assigned to this completion until all interests have been consolidated or a non-standard unit has been approved by the division.



**17 OPERATOR CERTIFICATION**  
I hereby certify that the information contained herein is true and complete to the best of my knowledge and belief, and that this organization either owns a working interest or unleased mineral interest in the land including the proposed bottom hole location or has a right to drill this well at this location pursuant to a contract with an owner of such a mineral or working interest, or to a voluntary pooling agreement or a compulsory pooling order heretofore entered by the division.

Signature \_\_\_\_\_ Date \_\_\_\_\_  
 Printed Name \_\_\_\_\_  
 E-mail Address \_\_\_\_\_

**18 SURVEYOR CERTIFICATION**  
I hereby certify that the well location shown on this plat was plotted from field notes of actual surveys made by me or under my supervision, and that the same is true and correct to the best of my belief.

AUGUST 29, 2022  
 Date of Survey \_\_\_\_\_

Signature and Seal of Professional Surveyor:   
 Certificate Number: 12797  
 License No. 8808D

Intent  As Drilled

|   |  |                     |
|---|--|---------------------|
| API #                                   |  |                     |
| Operator Name:<br>LONGFELLOW ENERGY, LP | Property Name:<br>MARLEY STATE COM 31 AB | Well Number<br>003H |

Kick Off Point (KOP)

| UL       | Section | Township | Range | Lot | Feet      | From N/S | Feet | From E/W | County |
|----------|---------|----------|-------|-----|-----------|----------|------|----------|--------|
| Latitude |         |          |       |     | Longitude |          |      |          | NAD    |

First Take Point (FTP)

| UL                     | Section | Township | Range | Lot | Feet                     | From N/S | Feet | From E/W | County    |
|------------------------|---------|----------|-------|-----|--------------------------|----------|------|----------|-----------|
|                        | 31      | 17S      | 28E   | 2   | 1325                     | NORTH    | 100  | WEST     | EDDY      |
| Latitude<br>32.7941426 |         |          |       |     | Longitude<br>104.2232436 |          |      |          | NAD<br>83 |

Last Take Point (LTP)

| UL                     | Section | Township | Range | Lot | Feet                     | From N/S | Feet | From E/W | County    |
|------------------------|---------|----------|-------|-----|--------------------------|----------|------|----------|-----------|
| H                      | 31      | 17S      | 28E   |     | 1306                     | NORTH    | 100  | EAST     | EDDY      |
| Latitude<br>32.7942689 |         |          |       |     | Longitude<br>104.2066932 |          |      |          | NAD<br>83 |

Is this well the defining well for the Horizontal Spacing Unit?

Is this well an infill well?

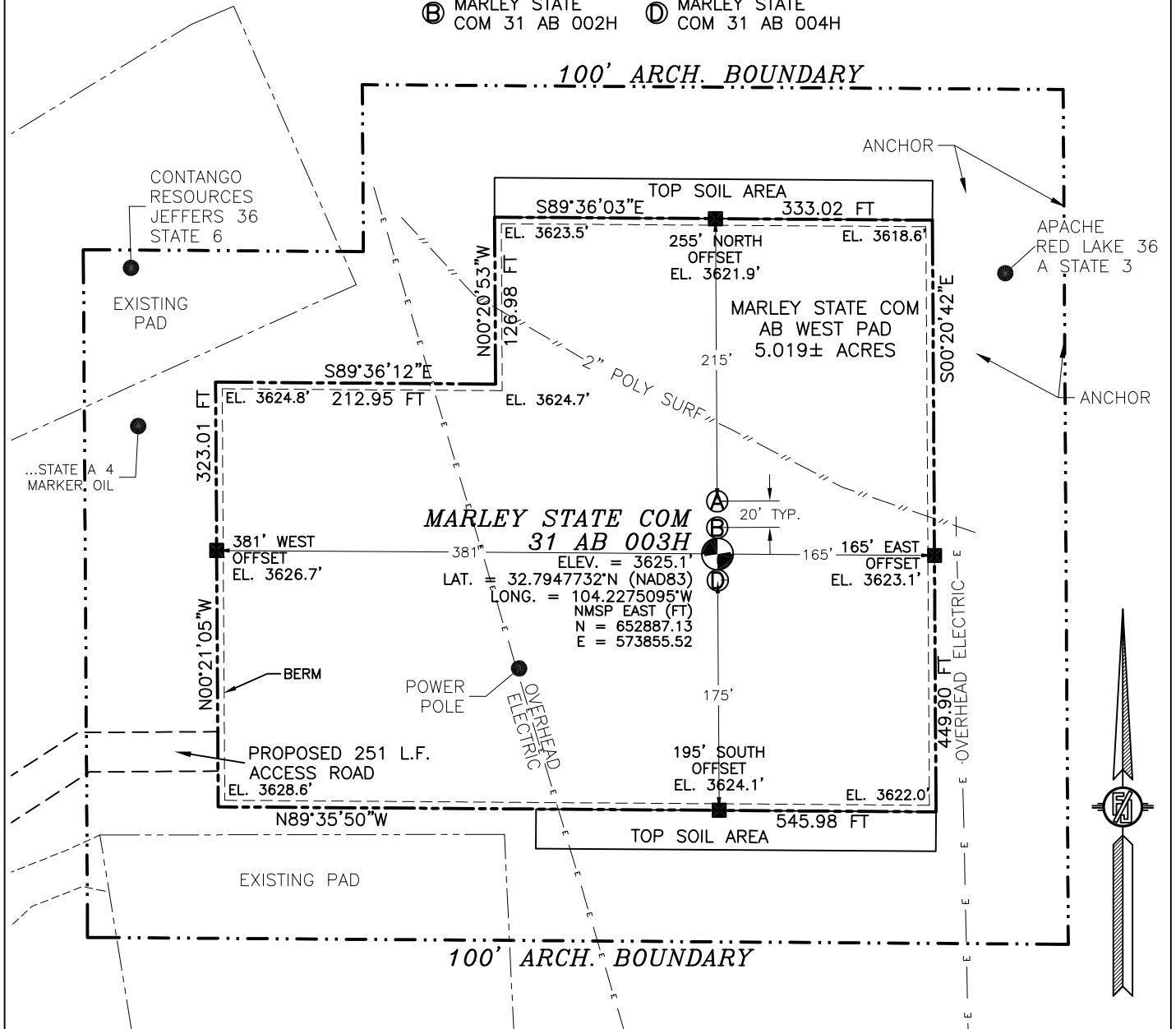
If infill is yes please provide API if available, Operator Name and well number for Defining well for Horizontal Spacing Unit.

|                |                |             |
|----------------|----------------|-------------|
| API #          |                |             |
| Operator Name: | Property Name: | Well Number |

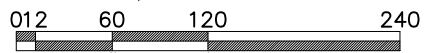
KZ 06/29/2018

# SECTION 36, TOWNSHIP 17 SOUTH, RANGE 27 EAST, N.M.P.M. EDDY COUNTY, STATE OF NEW MEXICO SITE MAP

- Ⓐ MARLEY STATE COM 31 AB 001H
- Ⓑ MARLEY STATE COM 31 AB 002H
- Ⓒ MARLEY STATE COM 31 AB 003H
- Ⓓ MARLEY STATE COM 31 AB 004H



**MARLEY STATE COM 31 AB 003H**  
 ELEV. = 3625.1'  
 LAT. = 32.7947732°N (NAD83)  
 LONG. = 104.2275095°W  
 NMSP EAST (FT)  
 N = 652887.13  
 E = 573855.52



SCALE 1" = 120'  
**DIRECTIONS TO LOCATION**  
 FROM THE INTERSECTION OF CR. 225 (HILLTOP RD.) & CR. 226 (EVANS), GO NORTHWEST ON CR. 225 APPROX. 0.28 MILES TO A PROPOSED ROAD SURVEY ON THE RIGHT AND NORTH EAST, JUST NORTH OF EXISTING CALICHE DRIVEWAY. FOLLOW ROAD SURVEY NORTHEAST AND EAST APPROX. 251' TO THE SOUTHWEST PAD CORNER FOR THIS LOCATION.

I, FILIMON F. JARAMILLO, A NEW MEXICO REGISTERED PROFESSIONAL SURVEYOR CERTIFY THAT I HAVE PERSONALLY CONDUCTED THIS SURVEY, THAT I AM A MEMBER IN GOOD STANDING OF THE BOARD OF SURVEYORS AND ENGINEERS OF THE STATE OF NEW MEXICO, AND THAT I AM AWARE OF MY KNOWLEDGE AND BELIEVE THIS SURVEY TO MEET THE MINIMUM STANDARDS FOR THE STATE OF NEW MEXICO.

FILIMON F. JARAMILLO, 12730

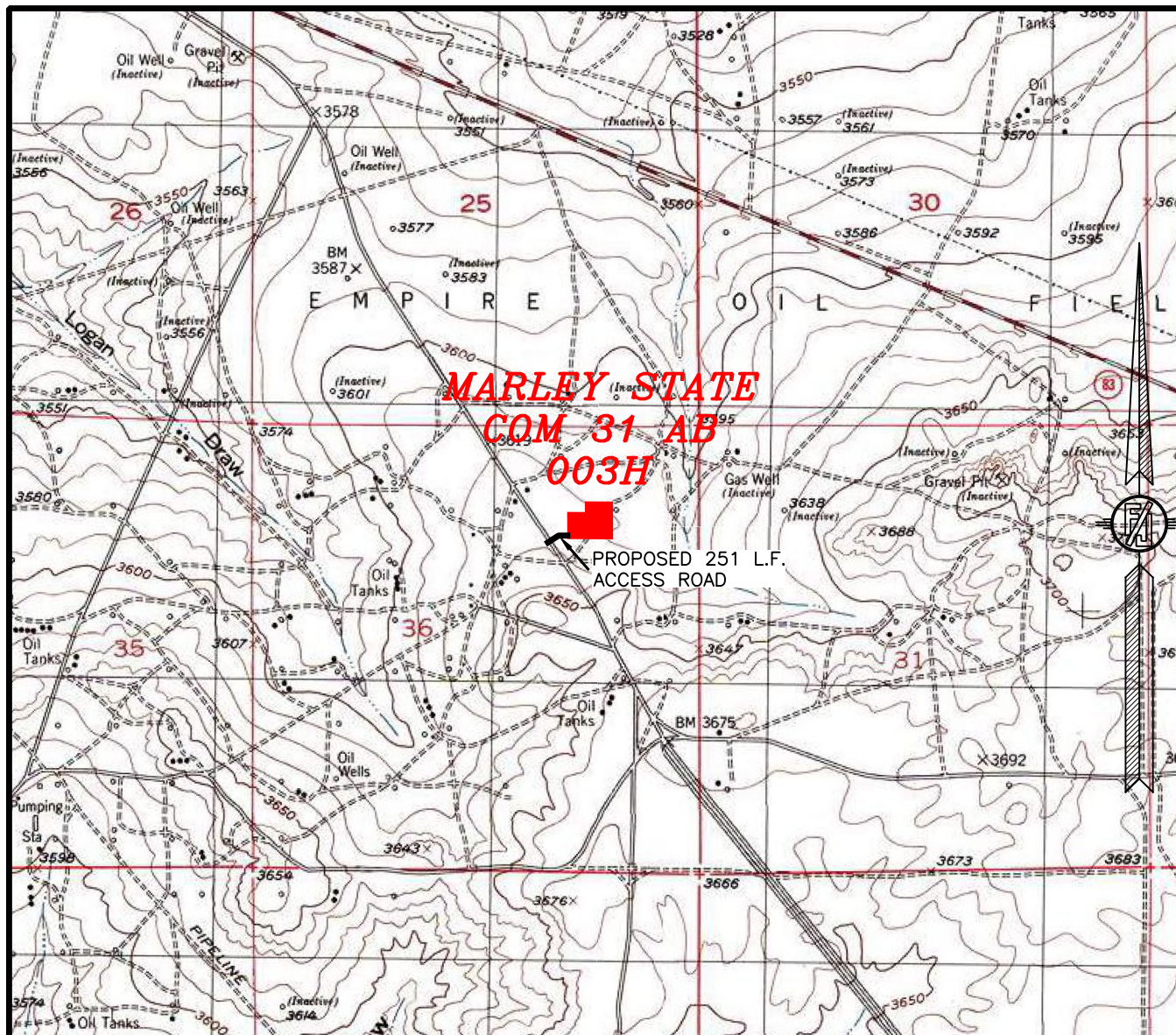
LONGFELLOW ENERGY, LP  
**MARLEY STATE COM 31 AB 003H**  
 LOCATED 1105 FT. FROM THE NORTH LINE  
 AND 1210 FT. FROM THE EAST LINE OF  
 SECTION 36, TOWNSHIP 17 SOUTH,  
 RANGE 27 EAST, N.M.P.M.  
 EDDY COUNTY, STATE OF NEW MEXICO

AUGUST 29, 2022

SURVEY NO. 8808D

**MADISON SURVEYING, INC.** 301 SOUTH CANAL CARLSBAD, NEW MEXICO  
 (575) 234-3341

# SECTION 36, TOWNSHIP 17 SOUTH, RANGE 27 EAST, N.M.P.M. EDDY COUNTY, STATE OF NEW MEXICO LOCATION VERIFICATION MAP



USGS QUAD MAP:  
RED LAKE

NOT TO SCALE

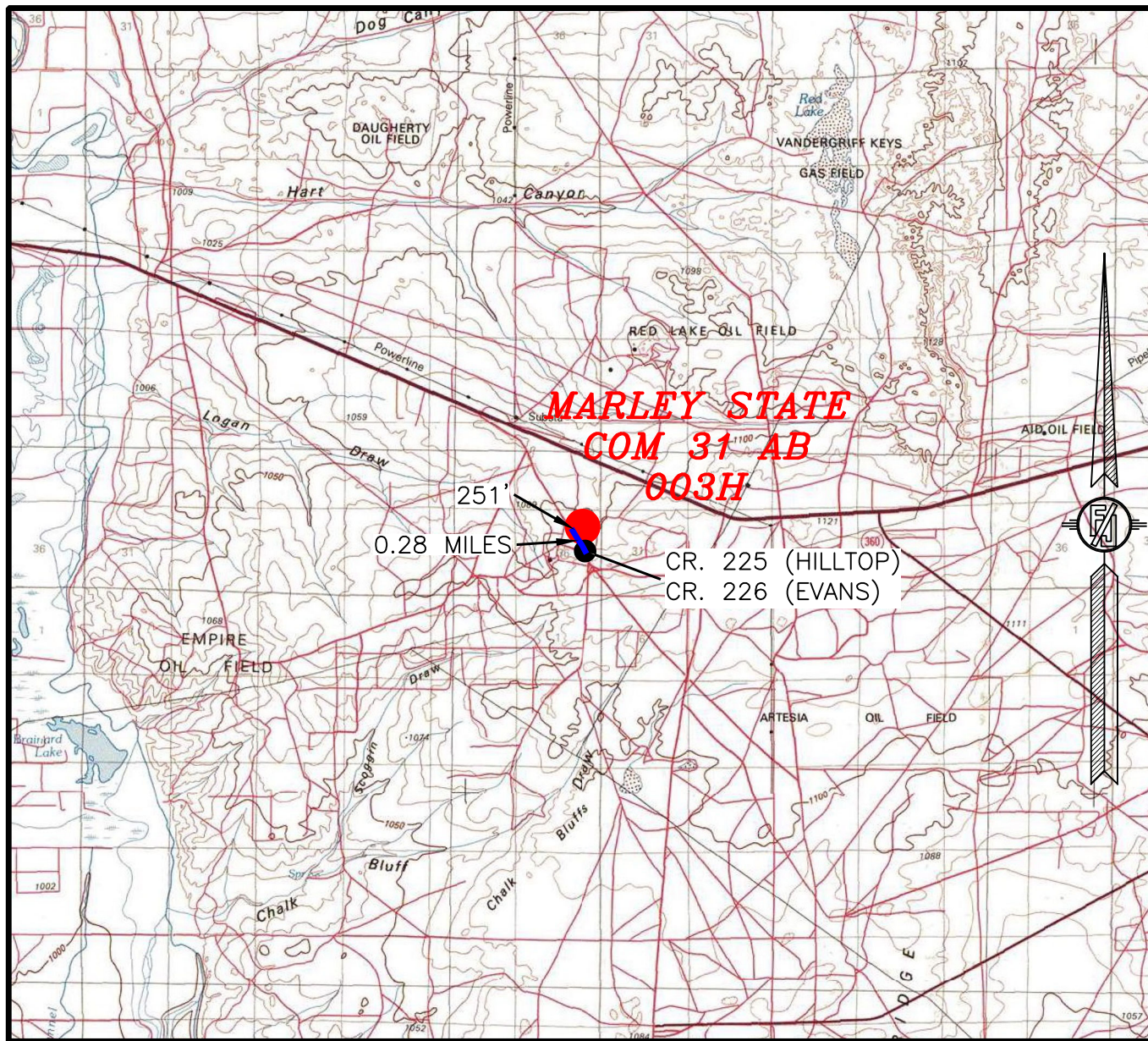
LONGFELLOW ENERGY, LP  
**MARLEY STATE COM 31 AB 003H**  
 LOCATED 1105 FT. FROM THE NORTH LINE  
 AND 1210 FT. FROM THE EAST LINE OF  
 SECTION 36, TOWNSHIP 17 SOUTH,  
 RANGE 27 EAST, N.M.P.M.  
 EDDY COUNTY, STATE OF NEW MEXICO

AUGUST 29, 2022

SURVEY NO. 8808D

MADRON SURVEYING, INC. 301 SOUTH CANAL CARLSBAD, NEW MEXICO  
 (575) 234-3341

# SECTION 36, TOWNSHIP 17 SOUTH, RANGE 27 EAST, N.M.P.M. EDDY COUNTY, STATE OF NEW MEXICO VICINITY MAP



DISTANCES IN MILES

NOT TO SCALE

### DIRECTIONS TO LOCATION

FROM THE INTERSECTION OF CR. 225 (HILLTOP RD.) & CR. 226 (EVANS), GO NORTHWEST ON CR. 225 APPROX. 0.28 MILES TO A PROPOSED ROAD SURVEY ON RIGHT (NORTHEAST, JUST NORTH OF EXISTING CALICHE DRIVEWAY), FOLLOW ROAD SURVEY NORTHEAST AND EAST APPROX. 251' TO THE SOUTHWEST PAD CORNER FOR THIS LOCATION.

**LONGFELLOW ENERGY, LP**  
**MARLEY STATE COM 31 AB 003H**  
 LOCATED 1105 FT. FROM THE NORTH LINE  
 AND 1210 FT. FROM THE EAST LINE OF  
 SECTION 36, TOWNSHIP 17 SOUTH,  
 RANGE 27 EAST, N.M.P.M.  
 EDDY COUNTY, STATE OF NEW MEXICO

AUGUST 29, 2022

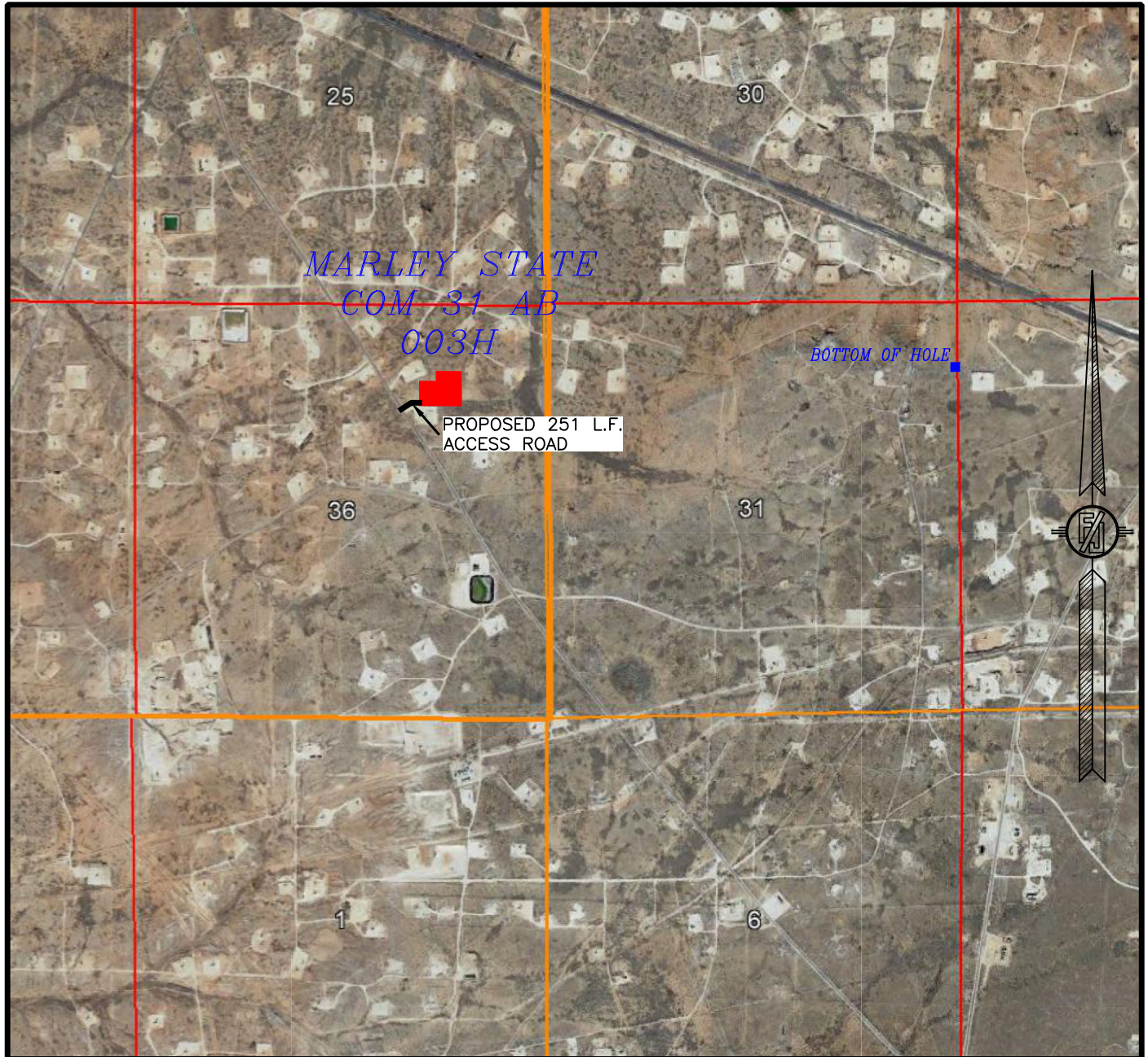
MADRON SURVEYING, INC.

301 SOUTH CANAL  
(575) 234-3341

CARLSBAD, NEW MEXICO

SURVEY NO. 8808D

SECTION 36, TOWNSHIP 17 SOUTH, RANGE 27 EAST, N.M.P.M.  
EDDY COUNTY, STATE OF NEW MEXICO  
AERIAL PHOTO



NOT TO SCALE  
AERIAL PHOTO:  
GOOGLE EARTH  
DEC. 2019

**LONGFELLOW ENERGY, LP**  
**MARLEY STATE COM 31 AB 003H**  
LOCATED 1105 FT. FROM THE NORTH LINE  
AND 1210 FT. FROM THE EAST LINE OF  
SECTION 36, TOWNSHIP 17 SOUTH,  
RANGE 27 EAST, N.M.P.M.  
EDDY COUNTY, STATE OF NEW MEXICO

AUGUST 29, 2022

SURVEY NO. 8808D

MADRON SURVEYING, INC. 301 SOUTH CANAL CARLSBAD, NEW MEXICO  
(575) 234-3341

SECTION 36, TOWNSHIP 17 SOUTH, RANGE 27 EAST, N.M.P.M.  
EDDY COUNTY, STATE OF NEW MEXICO  
AERIAL ACCESS ROUTE MAP



NOT TO SCALE  
AERIAL PHOTO:  
GOOGLE EARTH  
DEC. 2019

**LONGFELLOW ENERGY, LP**  
**MARLEY STATE COM 31 AB 003H**  
LOCATED 1105 FT. FROM THE NORTH LINE  
AND 1210 FT. FROM THE EAST LINE OF  
SECTION 36, TOWNSHIP 17 SOUTH,  
RANGE 27 EAST, N.M.P.M.  
EDDY COUNTY, STATE OF NEW MEXICO

AUGUST 29, 2022

SURVEY NO. 8808D

MADRON SURVEYING, INC. 301 SOUTH CANAL CARLSBAD, NEW MEXICO  
(575) 234-3341



**District I**  
1625 N. French Dr., Hobbs, NM 88240  
Phone: (575) 393-6161 Fax: (575) 393-0720

**District II**  
811 S. First St., Artesia, NM 88210  
Phone: (575) 748-1283 Fax: (575) 748-9720

**District III**  
1000 Rio Brazos Road, Aztec, NM 87410  
Phone: (505) 334-6178 Fax: (505) 334-6170

**District IV**  
1220 S. St. Francis Dr., Santa Fe, NM 87505  
Phone: (505) 476-3460 Fax: (505) 476-3462

State of New Mexico  
Energy, Minerals & Natural Resources Department  
**OIL CONSERVATION DIVISION**  
1220 South St. Francis Dr.  
Santa Fe, NM 87505

Form C-102  
Revised August 1, 2011  
Submit one copy to appropriate  
District Office

AMENDED REPORT

**WELL LOCATION AND ACREAGE DEDICATION PLAT**

|   |  |   |  |                        |   |
|---|--|---|--|------------------------|---|
| <sup>1</sup> API Number                 |  | <sup>2</sup> Pool Code                                      |  | <sup>3</sup> Pool Name |   |
| <sup>4</sup> Property Code              |  | <sup>5</sup> Property Name<br><b>MARLEY STATE COM 31 AB</b> |  |                        | <sup>6</sup> Well Number<br><b>004H</b> |
| <sup>7</sup> OGRID No.<br><b>372210</b> |  | <sup>8</sup> Operator Name<br><b>LONGFELLOW ENERGY, LP</b>  |  |                        | <sup>9</sup> Elevation<br><b>3625.7</b> |

<sup>10</sup> Surface Location

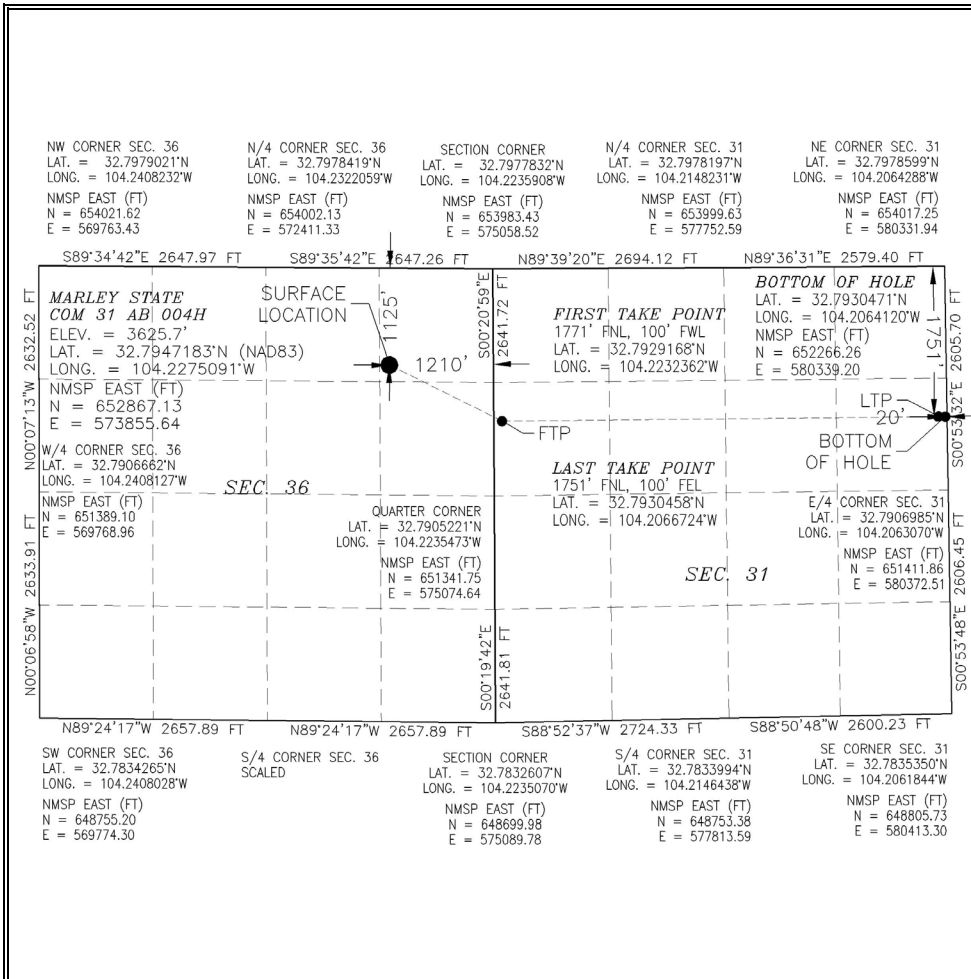
| UL or lot no. | Section   | Township    | Range       | Lot Idn | Feet from the | North/South line | Feet from the | East/West line | County      |
|---------------|-----------|-------------|-------------|---------|---------------|------------------|---------------|----------------|-------------|
| <b>A</b>      | <b>36</b> | <b>17 S</b> | <b>27 E</b> |         | <b>1125</b>   | <b>NORTH</b>     | <b>1210</b>   | <b>EAST</b>    | <b>EDDY</b> |

<sup>11</sup> Bottom Hole Location If Different From Surface

| UL or lot no. | Section   | Township    | Range       | Lot Idn | Feet from the | North/South line | Feet from the | East/West line | County      |
|---------------|-----------|-------------|-------------|---------|---------------|------------------|---------------|----------------|-------------|
| <b>H</b>      | <b>31</b> | <b>17 S</b> | <b>28 E</b> |         | <b>1751</b>   | <b>NORTH</b>     | <b>20</b>     | <b>EAST</b>    | <b>EDDY</b> |

|                               |                               |                                  |                         |
|-------------------------------|-------------------------------|----------------------------------|-------------------------|
| <sup>12</sup> Dedicated Acres | <sup>13</sup> Joint or Infill | <sup>14</sup> Consolidation Code | <sup>15</sup> Order No. |
|-------------------------------|-------------------------------|----------------------------------|-------------------------|

No allowable will be assigned to this completion until all interests have been consolidated or a non-standard unit has been approved by the division.



**<sup>17</sup> OPERATOR CERTIFICATION**

I hereby certify that the information contained herein is true and complete to the best of my knowledge and belief, and that this organization either owns a working interest or unleased mineral interest in the land including the proposed bottom hole location or has a right to drill this well at this location pursuant to a contract with an owner of such a mineral or working interest, or to a voluntary pooling agreement or a compulsory pooling order heretofore entered by the division.

Signature \_\_\_\_\_ Date \_\_\_\_\_

Printed Name \_\_\_\_\_

E-mail Address \_\_\_\_\_

**<sup>18</sup> SURVEYOR CERTIFICATION**

I hereby certify that the well location shown on this plat was plotted from field notes of actual surveys made by me or under my supervision, and that the same is true and correct to the best of my belief.

AUGUST 29, 2022

Date of Survey \_\_\_\_\_

Signature and Seal of Professional Surveyor: 

Certificate Number: 12797

Intent  As Drilled

|   |  |                     |
|---|--|---------------------|
| API #                                   |  |                     |
| Operator Name:<br>LONGFELLOW ENERGY, LP | Property Name:<br>MARLEY STATE COM 31 AB | Well Number<br>004H |

Kick Off Point (KOP)

| UL       | Section | Township | Range | Lot | Feet      | From N/S | Feet | From E/W | County |
|----------|---------|----------|-------|-----|-----------|----------|------|----------|--------|
| Latitude |         |          |       |     | Longitude |          |      |          | NAD    |

First Take Point (FTP)

| UL                     | Section | Township | Range | Lot | Feet                     | From N/S | Feet | From E/W | County    |
|------------------------|---------|----------|-------|-----|--------------------------|----------|------|----------|-----------|
|                        | 31      | 17S      | 28E   | 2   | 1771                     | NORTH    | 100  | WEST     | EDDY      |
| Latitude<br>32.7929168 |         |          |       |     | Longitude<br>104.2232362 |          |      |          | NAD<br>83 |

Last Take Point (LTP)

| UL                     | Section | Township | Range | Lot | Feet                     | From N/S | Feet | From E/W | County    |
|------------------------|---------|----------|-------|-----|--------------------------|----------|------|----------|-----------|
| H                      | 31      | 17S      | 28E   |     | 1751                     | NORTH    | 100  | EAST     | EDDY      |
| Latitude<br>32.7930458 |         |          |       |     | Longitude<br>104.2066724 |          |      |          | NAD<br>83 |

Is this well the defining well for the Horizontal Spacing Unit?

Is this well an infill well?

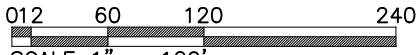
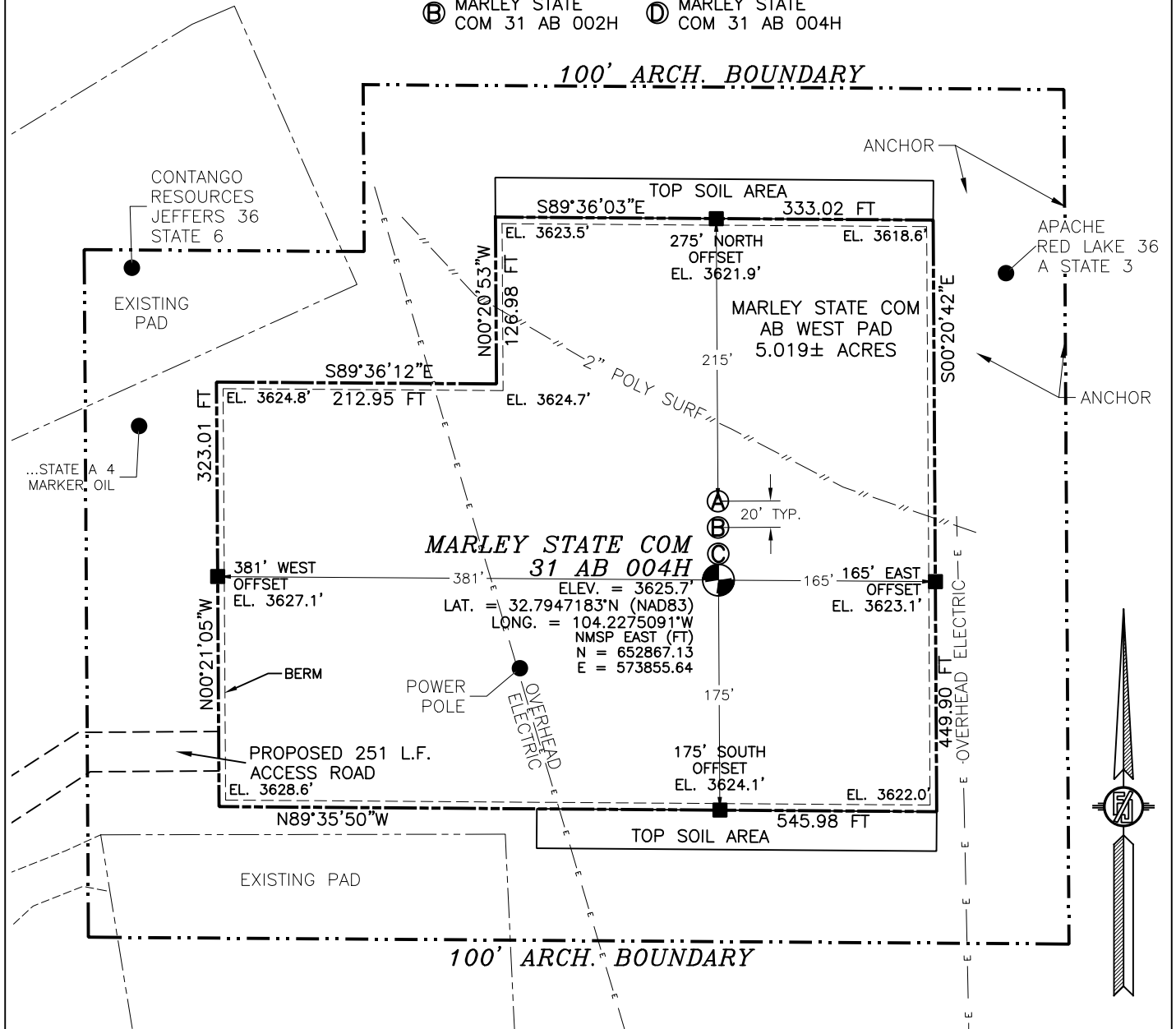
If infill is yes please provide API if available, Operator Name and well number for Defining well for Horizontal Spacing Unit.

|                |                |             |
|----------------|----------------|-------------|
| API #          |                |             |
| Operator Name: | Property Name: | Well Number |

KZ 06/29/2018

# SECTION 36, TOWNSHIP 17 SOUTH, RANGE 27 EAST, N.M.P.M. EDDY COUNTY, STATE OF NEW MEXICO SITE MAP

- Ⓐ MARLEY STATE COM 31 AB 001H
- Ⓑ MARLEY STATE COM 31 AB 002H
- Ⓒ MARLEY STATE COM 31 AB 003H
- Ⓓ MARLEY STATE COM 31 AB 004H



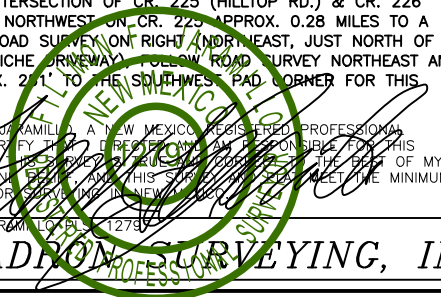
**DIRECTIONS TO LOCATION**  
FROM THE INTERSECTION OF CR. 225 (HILLTOP RD.) & CR. 226 (EVANS), GO NORTHWEST ON CR. 225 APPROX. 0.28 MILES TO A PROPOSED ROAD SURVEY ON THE RIGHT (NORTH-EAST, JUST NORTH OF EXISTING CALICHE DRIVEWAY). FOLLOW ROAD SURVEY NORTHEAST AND EAST APPROX. 251' TO THE SOUTHWEST PAD CORNER FOR THIS LOCATION.

LONGFELLOW ENERGY, LP  
**MARLEY STATE COM 31 AB 004H**  
LOCATED 1125 FT. FROM THE NORTH LINE  
AND 1210 FT. FROM THE EAST LINE OF  
SECTION 36, TOWNSHIP 17 SOUTH,  
RANGE 27 EAST, N.M.P.M.  
EDDY COUNTY, STATE OF NEW MEXICO

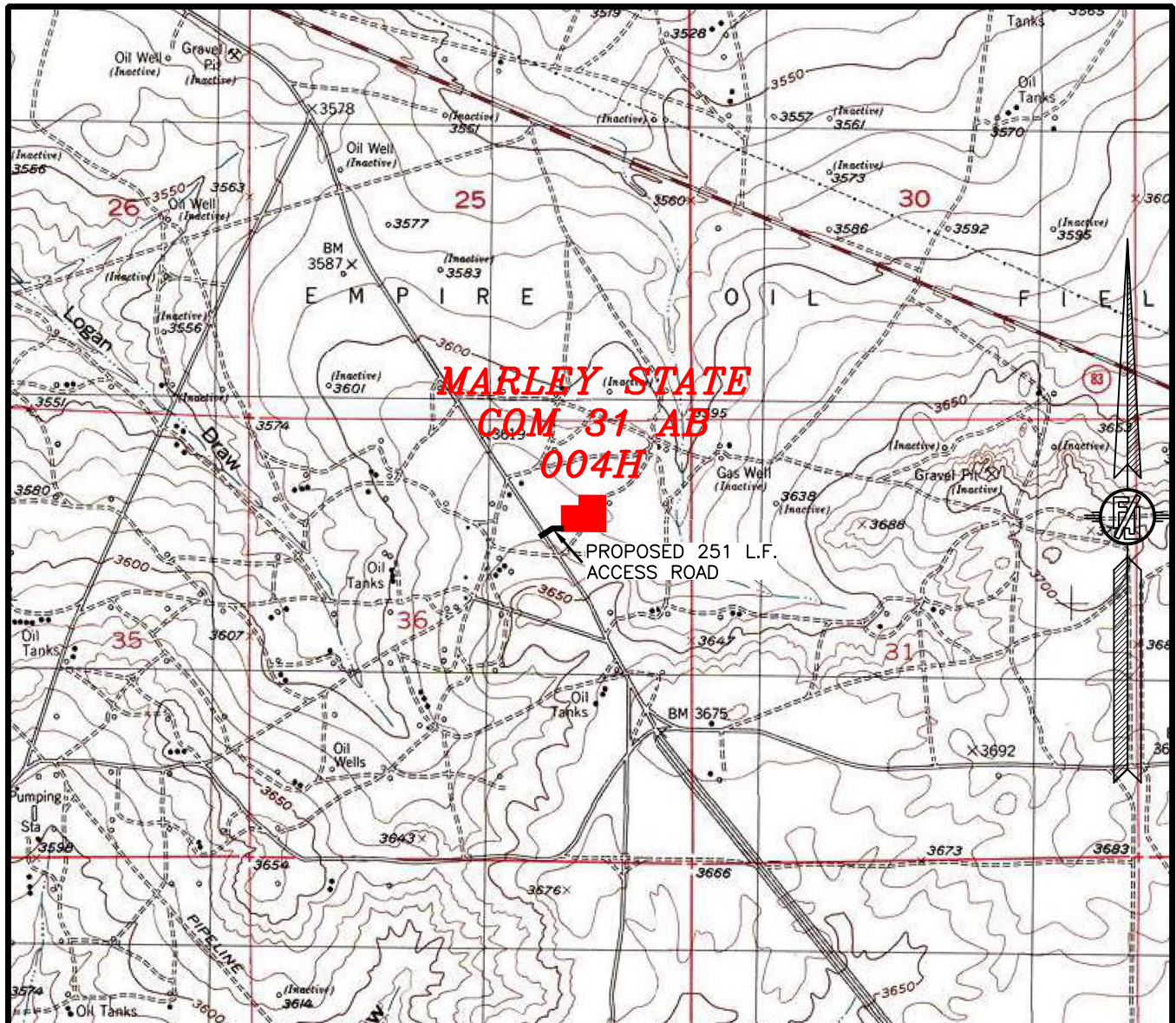
AUGUST 29, 2022

SURVEY NO. 8809E

MADISON SURVEYING, INC. 301 SOUTH CANAL CARLSBAD, NEW MEXICO  
(575) 234-3341



SECTION 36, TOWNSHIP 17 SOUTH, RANGE 27 EAST, N.M.P.M.  
EDDY COUNTY, STATE OF NEW MEXICO  
LOCATION VERIFICATION MAP



USGS QUAD MAP:  
RED LAKE

NOT TO SCALE

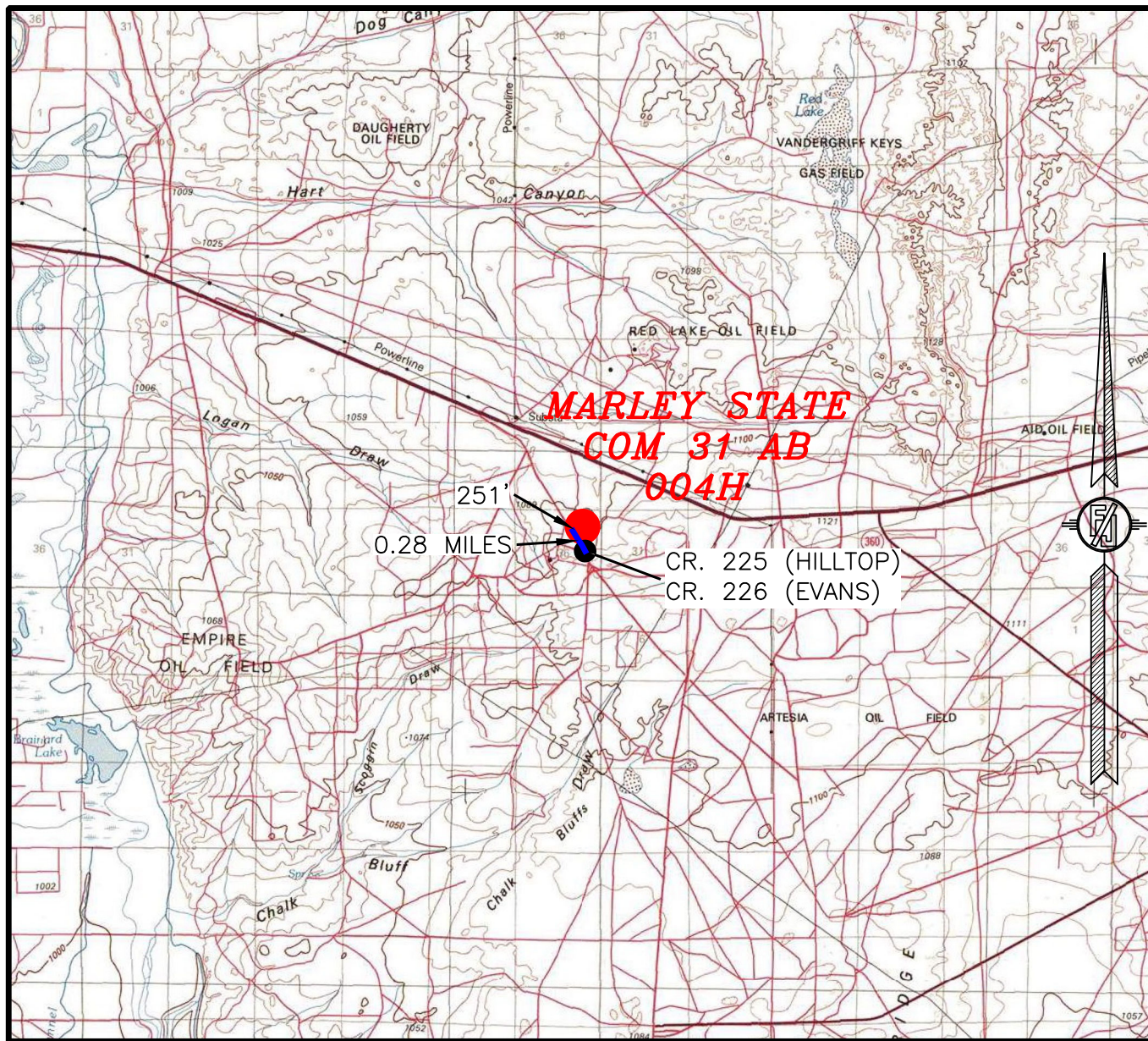
LONGFELLOW ENERGY, LP  
MARLEY STATE COM 31 AB 004H  
LOCATED 1125 FT. FROM THE NORTH LINE  
AND 1210 FT. FROM THE EAST LINE OF  
SECTION 36, TOWNSHIP 17 SOUTH,  
RANGE 27 EAST, N.M.P.M.  
EDDY COUNTY, STATE OF NEW MEXICO

AUGUST 29, 2022

SURVEY NO. 8809E

MADRON SURVEYING, INC. 301 SOUTH CANAL CARLSBAD, NEW MEXICO  
(575) 234-3341

SECTION 36, TOWNSHIP 17 SOUTH, RANGE 27 EAST, N.M.P.M.  
EDDY COUNTY, STATE OF NEW MEXICO  
VICINITY MAP



DISTANCES IN MILES

NOT TO SCALE

**DIRECTIONS TO LOCATION**

FROM THE INTERSECTION OF CR. 225 (HILLTOP RD.) & CR. 226 (EVANS), GO NORTHWEST ON CR. 225 APPROX. 0.28 MILES TO A PROPOSED ROAD SURVEY ON RIGHT (NORTHEAST, JUST NORTH OF EXISTING CALICHE DRIVEWAY), FOLLOW ROAD SURVEY NORTHEAST AND EAST APPROX. 251' TO THE SOUTHWEST PAD CORNER FOR THIS LOCATION.

**LONGFELLOW ENERGY, LP**  
**MARLEY STATE COM 31 AB 004H**  
LOCATED 1125 FT. FROM THE NORTH LINE  
AND 1210 FT. FROM THE EAST LINE OF  
SECTION 36, TOWNSHIP 17 SOUTH,  
RANGE 27 EAST, N.M.P.M.  
EDDY COUNTY, STATE OF NEW MEXICO

AUGUST 29, 2022

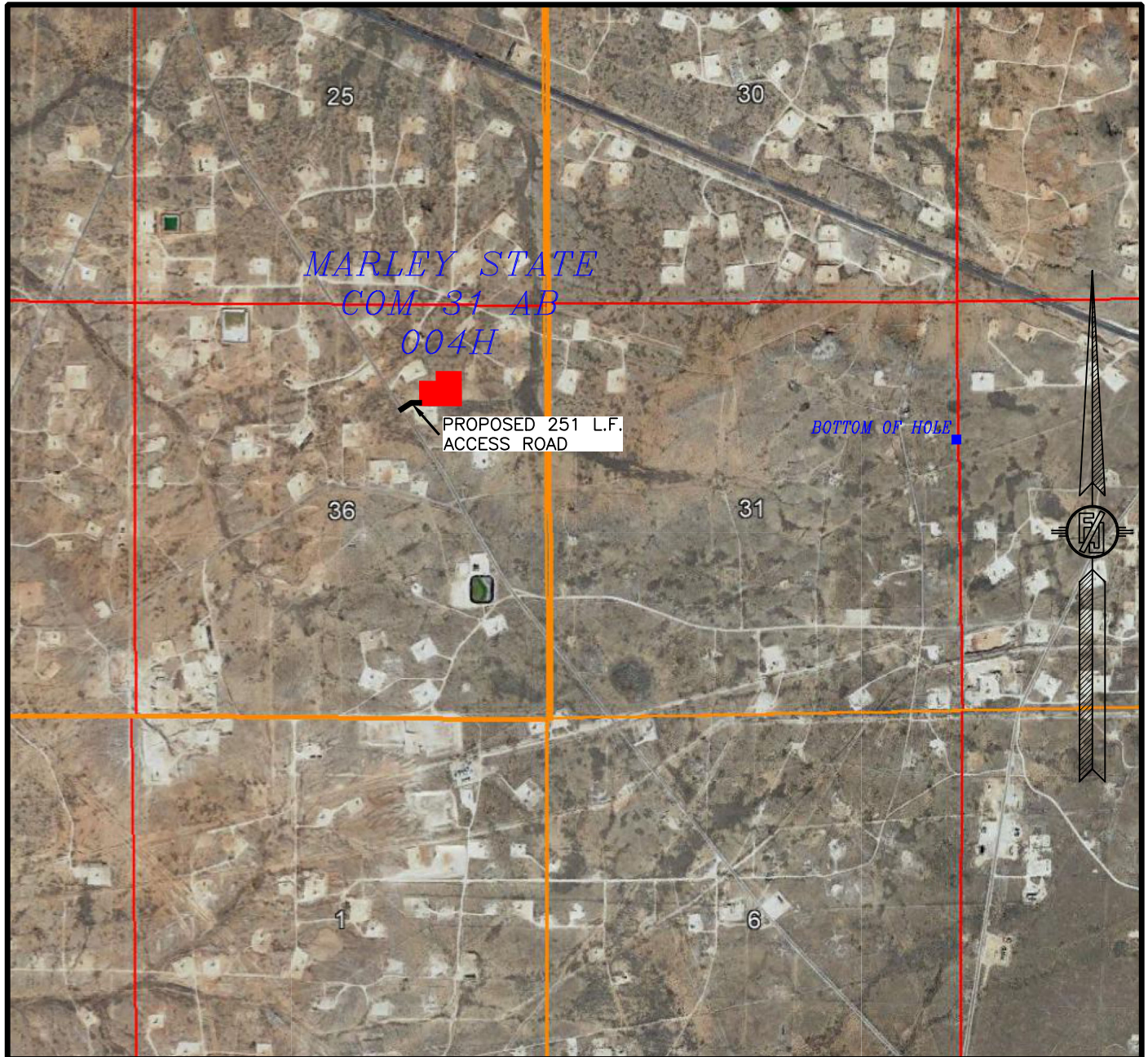
MADRON SURVEYING, INC.

301 SOUTH CANAL  
(575) 234-3341

CARLSBAD, NEW MEXICO

SURVEY NO. 8809E

SECTION 36, TOWNSHIP 17 SOUTH, RANGE 27 EAST, N.M.P.M.  
EDDY COUNTY, STATE OF NEW MEXICO  
AERIAL PHOTO



NOT TO SCALE  
AERIAL PHOTO:  
GOOGLE EARTH  
DEC. 2019

**LONGFELLOW ENERGY, LP**  
**MARLEY STATE COM 31 AB 004H**  
LOCATED 1125 FT. FROM THE NORTH LINE  
AND 1210 FT. FROM THE EAST LINE OF  
SECTION 36, TOWNSHIP 17 SOUTH,  
RANGE 27 EAST, N.M.P.M.  
EDDY COUNTY, STATE OF NEW MEXICO

AUGUST 29, 2022

SURVEY NO. 8809E

MADRON SURVEYING, INC. 301 SOUTH CANAL CARLSBAD, NEW MEXICO  
(575) 234-3341

SECTION 36, TOWNSHIP 17 SOUTH, RANGE 27 EAST, N.M.P.M.  
EDDY COUNTY, STATE OF NEW MEXICO  
AERIAL ACCESS ROUTE MAP



NOT TO SCALE  
AERIAL PHOTO:  
GOOGLE EARTH  
DEC. 2019

**LONGFELLOW ENERGY, LP**  
**MARLEY STATE COM 31 AB 004H**  
LOCATED 1125 FT. FROM THE NORTH LINE  
AND 1210 FT. FROM THE EAST LINE OF  
SECTION 36, TOWNSHIP 17 SOUTH,  
RANGE 27 EAST, N.M.P.M.  
EDDY COUNTY, STATE OF NEW MEXICO

AUGUST 29, 2022

SURVEY NO. 8809E

MADRON SURVEYING, INC. 301 SOUTH CANAL CARLSBAD, NEW MEXICO  
(575) 234-3341

**District I**  
1625 N. French Dr., Hobbs, NM 88240  
Phone: (575) 393-6161 Fax: (575) 393-0720  
**District II**  
811 S. First St., Artesia, NM 88210  
Phone: (575) 748-1283 Fax: (575) 748-9720  
**District III**  
1000 Rio Brazos Road, Aztec, NM 87410  
Phone: (505) 334-6178 Fax: (505) 334-6170  
**District IV**  
1220 S. St. Francis Dr., Santa Fe, NM 87505  
Phone: (505) 476-3460 Fax: (505) 476-3462

State of New Mexico  
Energy, Minerals & Natural Resources Department  
OIL CONSERVATION DIVISION  
1220 South St. Francis Dr.  
Santa Fe, NM 87505

Form C-102  
Revised August 1, 2011  
Submit one copy to appropriate  
District Office  
 AMENDED REPORT

WELL LOCATION AND ACREAGE DEDICATION PLAT

|                                  |  |  |  |                        |                                  |
|----------------------------------|--|--|--|------------------------|----------------------------------|
| <sup>1</sup> API Number          |  | <sup>2</sup> Pool Code                               |  | <sup>3</sup> Pool Name |                                  |
| <sup>4</sup> Property Code       |  | <sup>5</sup> Property Name<br>MARLEY STATE COM 31 AB |  |                        | <sup>6</sup> Well Number<br>005H |
| <sup>7</sup> OGRID No.<br>372210 |  | <sup>8</sup> Operator Name<br>LONGFELLOW ENERGY, LP  |  |                        | <sup>9</sup> Elevation<br>3656.0 |

<sup>10</sup> Surface Location

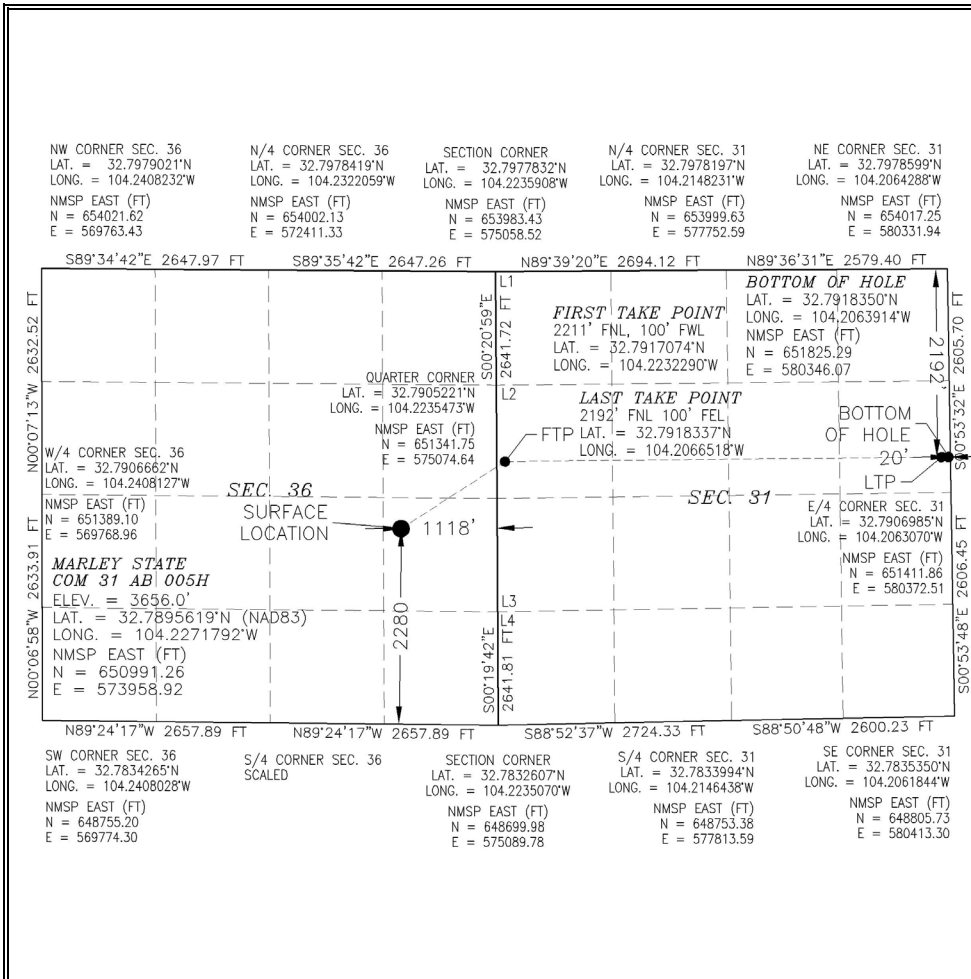
| UL or lot no. | Section | Township | Range | Lot Idn | Feet from the | North/South line | Feet from the | East/West line | County |
|---------------|---------|----------|-------|---------|---------------|------------------|---------------|----------------|--------|
| I             | 36      | 17 S     | 27 E  |         | 2280          | SOUTH            | 1118          | EAST           | EDDY   |

<sup>11</sup> Bottom Hole Location If Different From Surface

| UL or lot no. | Section | Township | Range | Lot Idn | Feet from the | North/South line | Feet from the | East/West line | County |
|---------------|---------|----------|-------|---------|---------------|------------------|---------------|----------------|--------|
| H             | 31      | 17 S     | 28 E  |         | 2192          | NORTH            | 20            | EAST           | EDDY   |

|                               |                               |                                  |                         |
|-------------------------------|-------------------------------|----------------------------------|-------------------------|
| <sup>12</sup> Dedicated Acres | <sup>13</sup> Joint or Infill | <sup>14</sup> Consolidation Code | <sup>15</sup> Order No. |
|-------------------------------|-------------------------------|----------------------------------|-------------------------|

No allowable will be assigned to this completion until all interests have been consolidated or a non-standard unit has been approved by the division.



**17 OPERATOR CERTIFICATION**  
I hereby certify that the information contained herein is true and complete to the best of my knowledge and belief, and that this organization either owns a working interest or unleased mineral interest in the land including the proposed bottom hole location or has a right to drill this well at this location pursuant to a contract with an owner of such a mineral or working interest, or to a voluntary pooling agreement or a compulsory pooling order heretofore entered by the division.

Signature \_\_\_\_\_ Date \_\_\_\_\_

Printed Name \_\_\_\_\_

E-mail Address \_\_\_\_\_

**18 SURVEYOR CERTIFICATION**  
I hereby certify that the well location shown on this plat was plotted from field notes of actual surveys made by me or under my supervision, and that the same is true and correct to the best of my belief.

AUGUST 30, 2022

Date of Survey \_\_\_\_\_

Signature and Seal of Professional Surveyor: 

Certificate Number: 12797



Intent  As Drilled

|   |  |                     |
|---|--|---------------------|
| API #                                   |  |                     |
| Operator Name:<br>LONGFELLOW ENERGY, LP | Property Name:<br>MARLEY STATE COM 31 AB | Well Number<br>005H |

Kick Off Point (KOP)

| UL       | Section | Township | Range | Lot | Feet      | From N/S | Feet | From E/W | County |
|----------|---------|----------|-------|-----|-----------|----------|------|----------|--------|
| Latitude |         |          |       |     | Longitude |          |      |          | NAD    |

First Take Point (FTP)

| UL                     | Section | Township | Range | Lot | Feet                     | From N/S | Feet | From E/W | County    |
|------------------------|---------|----------|-------|-----|--------------------------|----------|------|----------|-----------|
|                        | 31      | 17S      | 28E   | 2   | 2211                     | NORTH    | 100  | WEST     | EDDY      |
| Latitude<br>32.7917074 |         |          |       |     | Longitude<br>104.2232290 |          |      |          | NAD<br>83 |

Last Take Point (LTP)

| UL                     | Section | Township | Range | Lot | Feet                     | From N/S | Feet | From E/W | County    |
|------------------------|---------|----------|-------|-----|--------------------------|----------|------|----------|-----------|
| H                      | 31      | 17S      | 28E   |     | 2192                     | NORTH    | 100  | EAST     | EDDY      |
| Latitude<br>32.7918337 |         |          |       |     | Longitude<br>104.2066518 |          |      |          | NAD<br>83 |

Is this well the defining well for the Horizontal Spacing Unit?

Is this well an infill well?

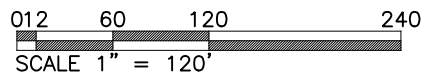
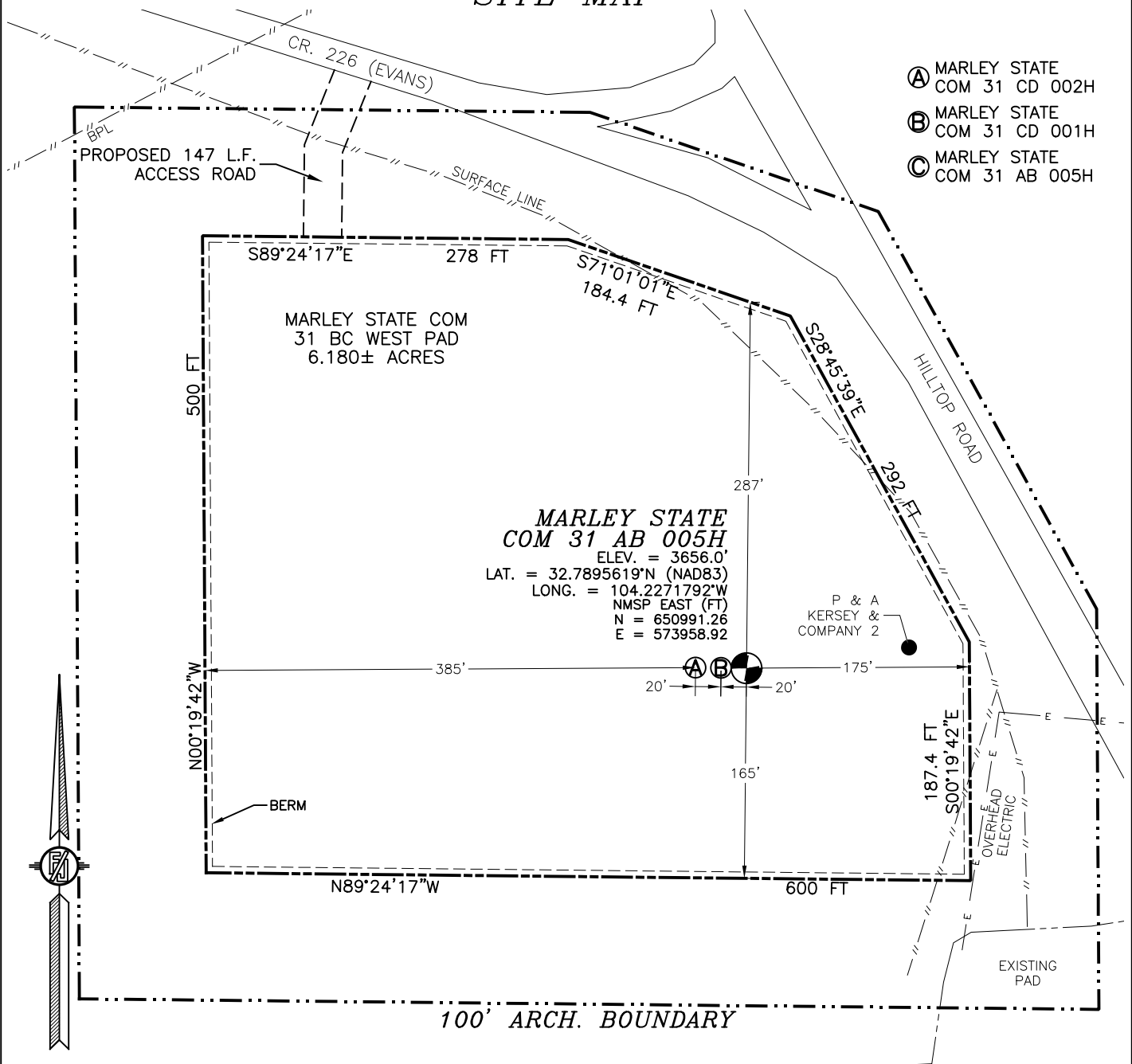
If infill is yes please provide API if available, Operator Name and well number for Defining well for Horizontal Spacing Unit.

|                |                |             |
|----------------|----------------|-------------|
| API #          |                |             |
| Operator Name: | Property Name: | Well Number |

KZ 06/29/2018

# SECTION 36, TOWNSHIP 17 SOUTH, RANGE 27 EAST, N.M.P.M. EDDY COUNTY, STATE OF NEW MEXICO SITE MAP

- Ⓐ MARLEY STATE COM 31 CD 002H
- Ⓑ MARLEY STATE COM 31 CD 001H
- Ⓒ MARLEY STATE COM 31 AB 005H



**DIRECTIONS TO LOCATION**  
FROM THE INTERSECTION OF CR. 204 (HILLTOP) & CR. 226 (EVANS), GO WEST ON CR. 226 APPROX. 340' TO A ROAD SURVEY ON LEFT (SOUTH), FOLLOW ROAD SURVEY SOUTH APPROX 147' TO THE NORTHWEST PAD CORNER FOR THIS LOCATION.

**LONGFELLOW ENERGY, LP**  
**MARLEY STATE COM 31 AB 005H**  
LOCATED 2280 FT. FROM THE SOUTH LINE  
AND 1118 FT. FROM THE EAST LINE OF  
SECTION 36, TOWNSHIP 17 SOUTH,  
RANGE 27 EAST, N.M.P.M.  
EDDY COUNTY, STATE OF NEW MEXICO

AUGUST 30, 2022

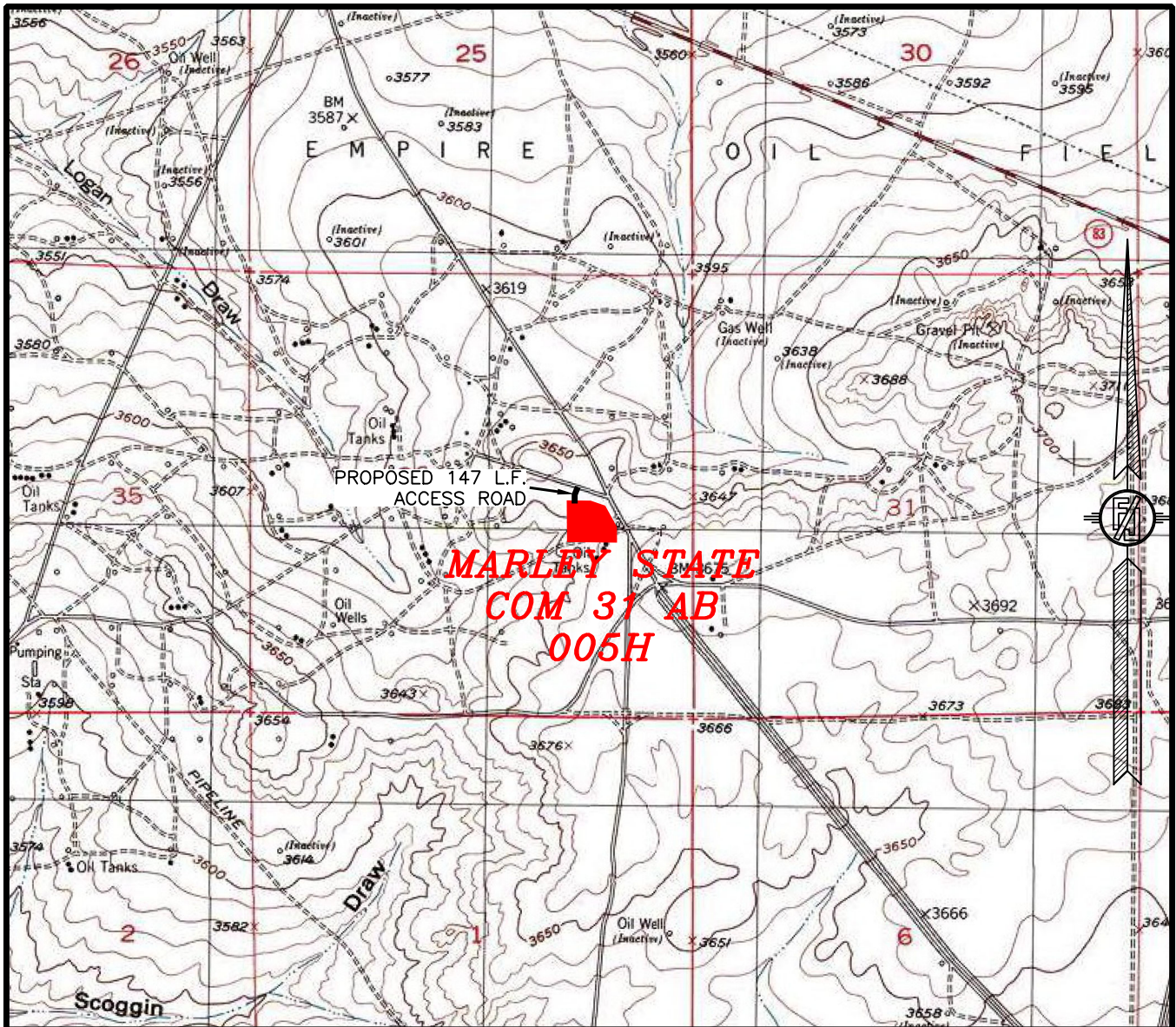
I, FILIMON F. JARAMILLO, A NEW MEXICO REGISTERED PROFESSIONAL SURVEYOR, CERTIFY THAT I HAVE CONDUCTED THIS SURVEY, THAT I AM A MEMBER OF THE NATIONAL BOARD OF SURVEYING AND MAPPING, AND THAT I AM A MEMBER OF THE NEW MEXICO SURVEYORS ASSOCIATION. THIS SURVEY MEETS THE MINIMUM STANDARDS FOR PROFESSIONAL SURVEYING IN THE STATE OF NEW MEXICO.

FILIMON F. JARAMILLO 10155 2780

SURVEY NO. 8810E

MADISON SURVEYING, INC. 301 SOUTH CANAL CARLSBAD, NEW MEXICO (575) 234-3341

SECTION 36, TOWNSHIP 17 SOUTH, RANGE 27 EAST, N.M.P.M.  
EDDY COUNTY, STATE OF NEW MEXICO  
LOCATION VERIFICATION MAP



USGS QUAD MAP:  
RED LAKE

NOT TO SCALE

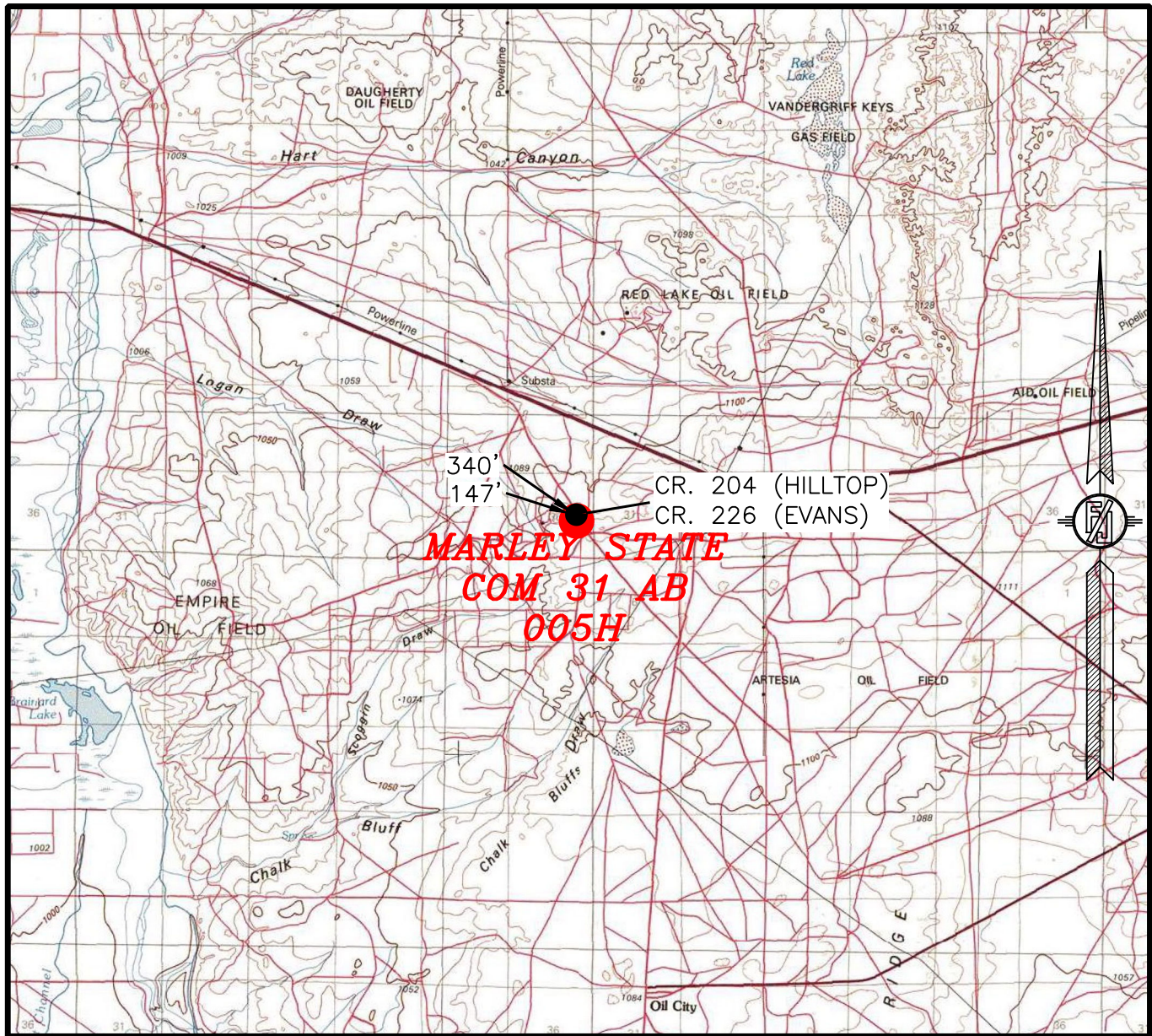
LONGFELLOW ENERGY, LP  
MARLEY STATE COM 31 AB 005H  
LOCATED 2280 FT. FROM THE SOUTH LINE  
AND 1118 FT. FROM THE EAST LINE OF  
SECTION 36, TOWNSHIP 17 SOUTH,  
RANGE 27 EAST, N.M.P.M.  
EDDY COUNTY, STATE OF NEW MEXICO

AUGUST 30, 2022

SURVEY NO. 8810E

MADRON SURVEYING, INC. 301 SOUTH CANAL CARLSBAD, NEW MEXICO  
(575) 234-3341

SECTION 36, TOWNSHIP 17 SOUTH, RANGE 27 EAST, N.M.P.M.  
EDDY COUNTY, STATE OF NEW MEXICO  
VICINITY MAP



DISTANCES IN MILES

NOT TO SCALE

**DIRECTIONS TO LOCATION**

FROM THE INTERSECTION OF CR. 204 (HILLTOP) & CR. 226 (EVANS), GO WEST ON CR. 226 APPROX. 340' TO A ROAD SURVEY ON LEFT (SOUTH), FOLLOW ROAD SURVEY SOUTH APPROX 147' TO THE NORTHWEST PAD CORNER FOR THIS LOCATION.

**LONGFELLOW ENERGY, LP**  
**MARLEY STATE COM 31 AB 005H**  
LOCATED 2280 FT. FROM THE SOUTH LINE  
AND 1118 FT. FROM THE EAST LINE OF  
SECTION 36, TOWNSHIP 17 SOUTH,  
RANGE 27 EAST, N.M.P.M.  
EDDY COUNTY, STATE OF NEW MEXICO

AUGUST 30, 2022

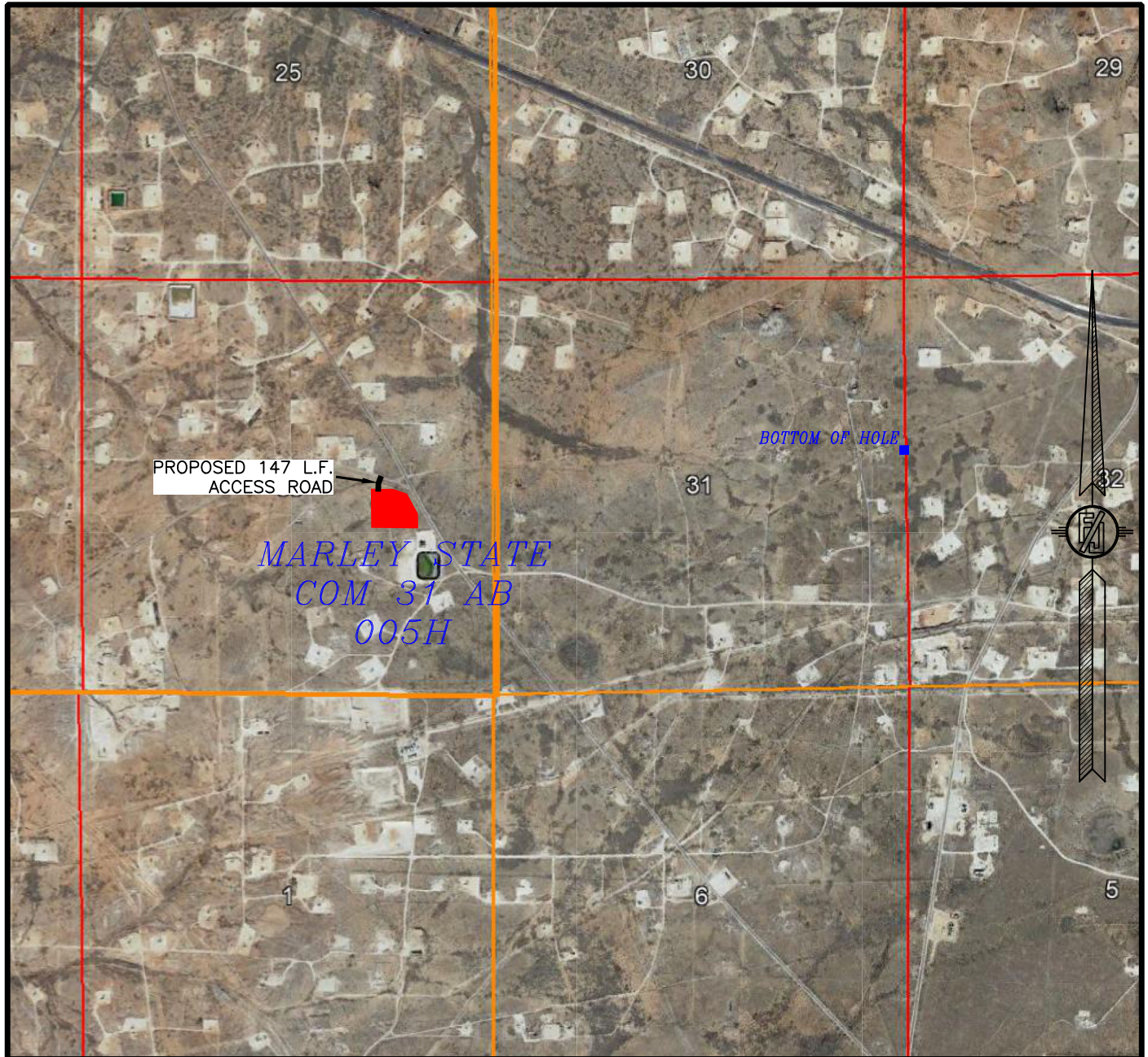
MADRON SURVEYING, INC.

301 SOUTH CANAL  
(575) 234-3341

CARLSBAD, NEW MEXICO

SURVEY NO. 8810E

SECTION 36, TOWNSHIP 17 SOUTH, RANGE 27 EAST, N.M.P.M.  
EDDY COUNTY, STATE OF NEW MEXICO  
AERIAL PHOTO



NOT TO SCALE  
AERIAL PHOTO:  
GOOGLE EARTH  
DEC. 2019

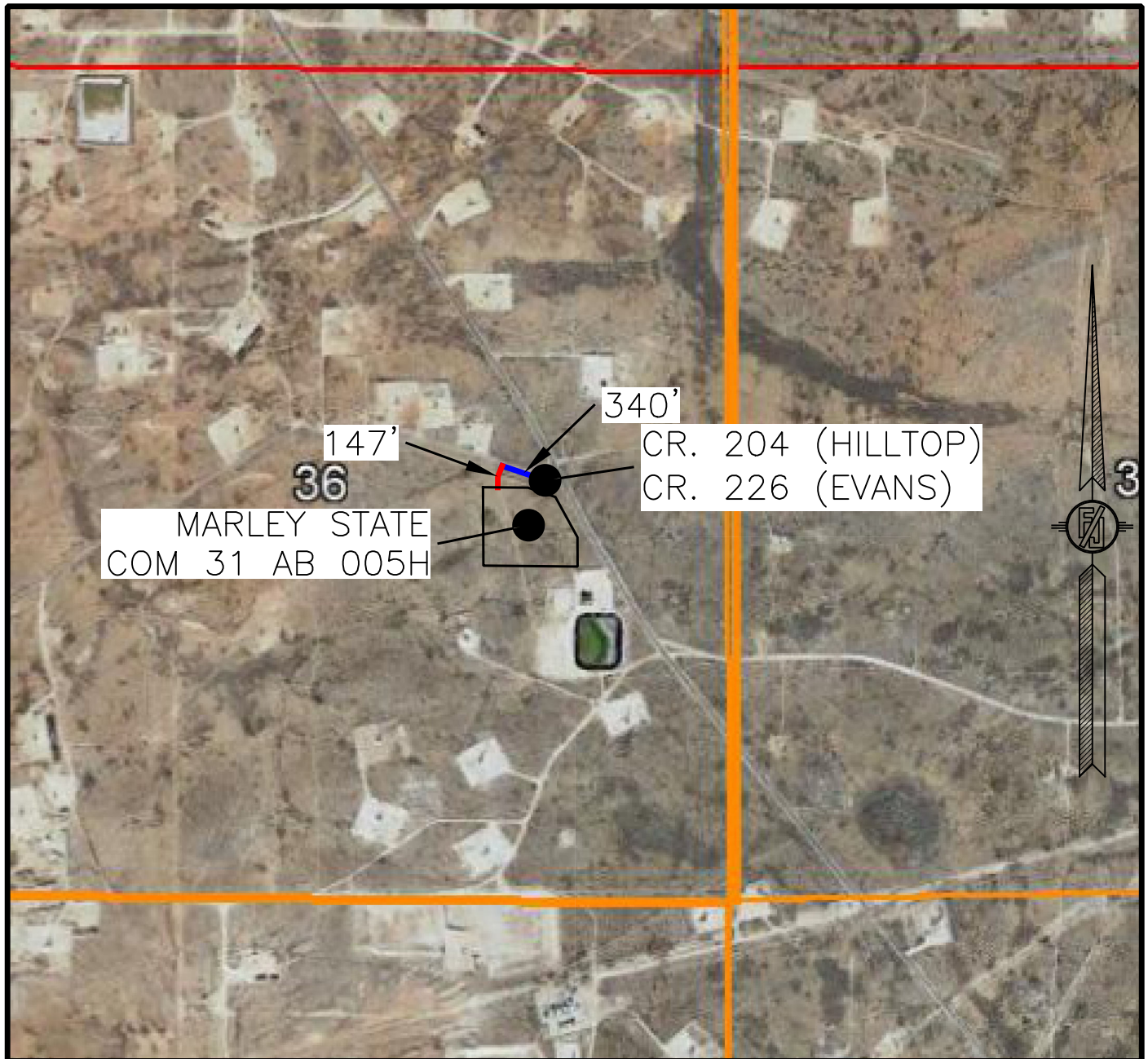
**LONGFELLOW ENERGY, LP**  
**MARLEY STATE COM 31 AB 005H**  
LOCATED 2280 FT. FROM THE SOUTH LINE  
AND 1118 FT. FROM THE EAST LINE OF  
SECTION 36, TOWNSHIP 17 SOUTH,  
RANGE 27 EAST, N.M.P.M.  
EDDY COUNTY, STATE OF NEW MEXICO

AUGUST 30, 2022

SURVEY NO. 8810E

MADRON SURVEYING, INC. 301 SOUTH CANAL CARLSBAD, NEW MEXICO  
(575) 234-3341

SECTION 36, TOWNSHIP 17 SOUTH, RANGE 27 EAST, N.M.P.M.  
EDDY COUNTY, STATE OF NEW MEXICO  
AERIAL ACCESS ROUTE MAP



NOT TO SCALE  
AERIAL PHOTO:  
GOOGLE EARTH  
DEC. 2019

**LONGFELLOW ENERGY, LP**  
**MARLEY STATE COM 31 AB 005H**  
LOCATED 2280 FT. FROM THE SOUTH LINE  
AND 1118 FT. FROM THE EAST LINE OF  
SECTION 36, TOWNSHIP 17 SOUTH,  
RANGE 27 EAST, N.M.P.M.  
EDDY COUNTY, STATE OF NEW MEXICO

AUGUST 30, 2022

SURVEY NO. 8810E

MADRON SURVEYING, INC. 301 SOUTH CANAL CARLSBAD, NEW MEXICO  
(575) 234-3341