

STATE OF NEW MEXICO  
ENERGY, MINERALS AND NATURAL RESOURCES DEPARTMENT  
OIL CONSERVATION DIVISION

APPLICATION OF MEWBOURNE OIL COMPANY  
TO AMEND ORDER FOR COMPULSORY POOLING,  
EDDY COUNTY, NEW MEXICO.

Case No. 23078

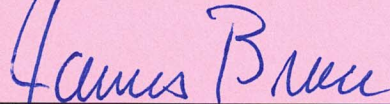
NOTICE OF FILING ADDITIONAL EXHIBITS

Mewbourne Oil Company hereby submits for filing the following:

Part of Exhibit 2-A, the C-102s. The C-102s were omitted from the original exhibit Packet.

Exhibit 6 (corrected), which corrects a typo in the original Exhibit 6. The correction on page 2 is highlighted.

Respectfully submitted,



---

James Bruce  
Post Office Box 1056  
Santa Fe, New Mexico 87504  
(505) 982-2043  
*jamesbruc@aol.com*

Attorney for Mewbourne Oil Company

District I  
1625 N. French Dr., Hobbs, NM 88240  
Phone: (575) 393-6161 Fax: (575) 393-0720  
District II  
811 S. First St., Artesia, NM 88210  
Phone: (575) 748-1283 Fax: (575) 748-9720  
District III  
1000 Rio Brazos Road, Aztec, NM 87410  
Phone: (505) 334-6178 Fax: (505) 334-6170  
District IV  
1220 S. St. Francis Dr., Santa Fe, NM 87505  
Phone: (505) 476-3460 Fax: (505) 476-3462

State of New Mexico  
Energy, Minerals & Natural Resources Department  
OIL CONSERVATION DIVISION  
1220 South St. Francis Dr.  
Santa Fe, NM 87505

Form C-102  
Revised August 1, 2011  
Submit one copy to appropriate  
District Office

AMENDED REPORT

WELL LOCATION AND ACREAGE DEDICATION PLAT

<sup>1</sup> API Number	<sup>2</sup> Pool Code 98220	<sup>3</sup> Pool Name Purple Sage; Wolfcamp (Gas)
<sup>4</sup> Property Code	<sup>5</sup> Property Name TOMMY BOY 23/24 WODA FED COM	<sup>6</sup> Well Number 1H
<sup>7</sup> GRID NO.	<sup>8</sup> Operator Name MEWBOURNE OIL COMPANY	<sup>9</sup> Elevation 3101'

<sup>10</sup> Surface Location

UL or lot no.	Section	Township	Range	Lot Idn	Feet from the	North/South line	Feet From the	East/West line	County
H	22	22S	27E		2440	NORTH	580	EAST	EDDY

<sup>11</sup> Bottom Hole Location If Different From Surface

UL or lot no.	Section	Township	Range	Lot Idn	Feet from the	North/South line	Feet from the	East/West line	County
A	24	22S	27E		400	NORTH	330	EAST	EDDY

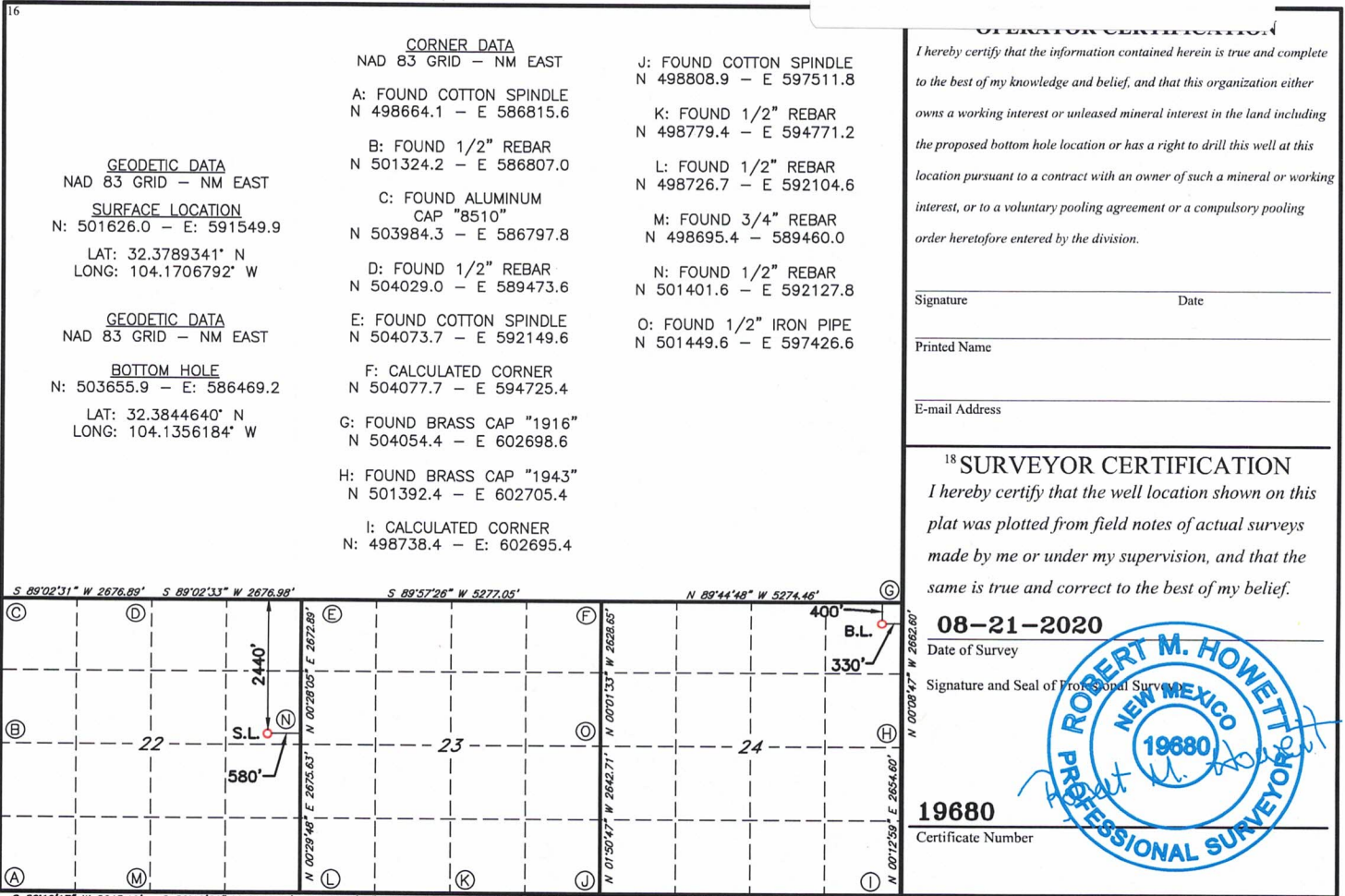
<sup>12</sup> Dedicated Acres	<sup>13</sup> Joint or Infill	<sup>14</sup> Consolidation Code	<sup>15</sup> Order No.

EXHIBIT

2-A

No allowable will be assigned to this completion until all interest have been consolidated

on.



District I  
1625 N. French Dr., Hobbs, NM 88240  
Phone: (575) 393-6161 Fax: (575) 393-0720  
District II  
811 S. First St., Artesia, NM 88210  
Phone: (575) 748-1283 Fax: (575) 748-9720  
District III  
1000 Rio Brazos Road, Aztec, NM 87410  
Phone: (505) 334-6178 Fax: (505) 334-6170  
District IV  
1220 S. St. Francis Dr., Santa Fe, NM 87505  
Phone: (505) 476-3460 Fax: (505) 476-3462

State of New Mexico  
Energy, Minerals & Natural Resources Department  
OIL CONSERVATION DIVISION  
1220 South St. Francis Dr.  
Santa Fe, NM 87505

Form C-102  
Revised August 1, 2011  
Submit one copy to appropriate  
District Office

AMENDED REPORT

WELL LOCATION AND ACREAGE DEDICATION PLAT

<sup>1</sup> API Number	<sup>2</sup> Pool Code 98220	<sup>3</sup> Pool Name Purple Sage; Woltcamp (600)
<sup>4</sup> Property Code	<sup>5</sup> Property Name TOMMY BOY 23/24 WOEH FED COM	
<sup>7</sup> GRID NO.	<sup>8</sup> Operator Name MEWBOURNE OIL COMPANY	<sup>6</sup> Well Number 1H
		<sup>9</sup> Elevation 3101'

<sup>10</sup> Surface Location

UL or lot no.	Section	Township	Range	Lot Idn	Feet from the	North/South line	Feet From the	East/West line	County
H	22	22S	27E		2440	NORTH	550	EAST	EDDY

<sup>11</sup> Bottom Hole Location If Different From Surface

UL or lot no.	Section	Township	Range	Lot Idn	Feet from the	North/South line	Feet from the	East/West line	County
H	24	22S	27E		1900	NORTH	330	EAST	EDDY

<sup>12</sup> Dedicated Acres	<sup>13</sup> Joint or Infill	<sup>14</sup> Consolidation Code	<sup>15</sup> Order No.

No allowable will be assigned to this completion until all interest have been consolidated or a non-standard unit has been approved by the division.

**CORNER DATA**  
NAD 83 GRID - NM EAST

A: FOUND COTTON SPINDLE  
N 498664.1 - E 586815.6

B: FOUND 1/2" REBAR  
N 501324.2 - E 586807.0

C: FOUND ALUMINUM  
CAP "8510"  
N 503984.3 - E 586797.8

D: FOUND 1/2" REBAR  
N 504029.0 - E 589473.6

E: FOUND COTTON SPINDLE  
N 504073.7 - E 592149.6

F: CALCULATED CORNER  
N 504077.7 - E 594725.4

G: FOUND BRASS CAP "1916"  
N 504054.4 - E 602698.6

H: FOUND BRASS CAP "1943"  
N 501392.4 - E 602705.4

I: CALCULATED CORNER  
N: 498738.4 - E: 602695.4

J: FOUND COTTON SPINDLE  
N 498808.9 - E 597511.8

K: FOUND 1/2" REBAR  
N 498779.4 - E 594771.2

L: FOUND 1/2" REBAR  
N 498726.7 - E 592104.6

M: FOUND 3/4" REBAR  
N 498695.4 - 589460.0

N: FOUND 1/2" REBAR  
N 501401.6 - E 592127.8

O: FOUND 1/2" IRON PIPE  
N 501449.6 - E 597426.6

**<sup>17</sup> OPERATOR CERTIFICATION**  
*I hereby certify that the information contained herein is true and complete to the best of my knowledge and belief, and that this organization either owns a working interest or unleased mineral interest in the land including the proposed bottom hole location or has a right to drill this well at this location pursuant to a contract with an owner of such a mineral or working interest, or to a voluntary pooling agreement or a compulsory pooling order heretofore entered by the division.*

Signature \_\_\_\_\_ Date \_\_\_\_\_

Printed Name \_\_\_\_\_

E-mail Address \_\_\_\_\_

**<sup>18</sup> SURVEYOR CERTIFICATION**  
*I hereby certify that the well location shown on this plat was plotted from field notes of actual surveys made by me or under my supervision, and that the same is true and correct to the best of my belief.*

**08-21-2020**  
Date of Survey

Signature and Seal of Professional Surveyor \_\_\_\_\_

**19680**  
Certificate Number

The diagram shows a grid of sections 22, 23, and 24. Section 22 is on the left, 23 in the middle, and 24 on the right. Township 22S and Range 27E are indicated. A well location (S.L.) is marked in section 22 at a distance of 2440' from the north line and 550' from the east line. A bottom hole location (B.L.) is marked in section 24 at a distance of 1900' from the north line and 330' from the east line. The diagram includes bearings and distances for the grid lines and the well/bottom hole locations.

Job No.: LS20080376

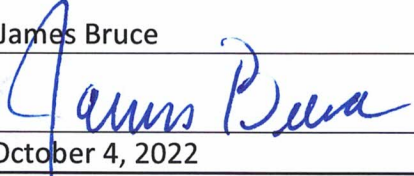
**COMPULSORY POOLING APPLICATION CHECKLIST****ALL INFORMATION IN THE APPLICATION MUST BE SUPPORTED BY SIGNED AFFIDAVITS**

<b>Case:</b>	<b>23078</b>
<b>Date</b>	<b>October 6, 2022</b>
Applicant	Mewbourne Oil Company
Designated Operator & OGRID (affiliation if applicable)	Mewbourne Oil Company/OGRID No. 14744
Applicant's Counsel:	James Bruce
Case Title:	Application of Mewbourne Oil Company for Compulsory Pooling, Eddy County, New Mexico
Entries of Appearance/Intervenors:	
Well Family	Tommy Boy Wolfcamp wells
<b>Formation/Pool</b>	
Formation Name(s) or Vertical Extent:	Wolfcamp Formation
Primary Product (Oil or Gas):	Gas
Pooling this vertical extent:	Entire Wolfcamp formation
Pool Name and Pool Code:	Purple Sage; Wolfcamp (Gas)/Pool Code 98220
Well Location Setback Rules:	Purple Sage pool rules and current horizontal well rules
Spacing Unit Size:	Half Section/320 acres
<b>Spacing Unit</b>	
Type (Horizontal/Vertical)	Horizontal
Size (Acres)	640 acres
Building Blocks:	320 acres
Orientation:	West-East
Description: TRS/County	N/2 §23 and N/2 §24-22S-27E, NMPM, Eddy County
Standard Horizontal Well Spacing Unit (Y/N), If No, describe	Yes
<b>Other Situations</b>	
Depth Severance: Y/N. If yes, description	No
Proximity Tracts: If yes, description	No
Proximity Defining Well: if yes, description	
Applicant's Ownership in Each Tract	Exhibit 2A-B
<b>Well(s)</b>	
Name & API (if assigned), surface and bottom hole location, footages, completion target, orientation, completion status (standard or non- standard)	Tommy Boy 23/24 WODA Fed. Com. Well No. 1H API No. 30-015-Pending SHL: 2440 FNL & 580 FEL §22-22S-27E BHL: 400 FNL & 330 FEL §24 FTP: 400 FNL & 330 FWL §23 LTP: 400 FSL & 330 FEL §24 Upper Wolfcamp/TVD 9320 feet/MD 19520 feet

EXHIBIT

6

	Tommy Boy 23/24 W0EH Fed. Com. Well No. 1H API No. 30-015-Pending SHL: 2440 FNL & 550 FEL §22-22S-27E BHL: 1900 FNL & 330 FEL §24 FTP: 1900 FNL & 330 FWL §23 LTP: 1900 FSL & 330 FEL §24 Upper Wolfcamp/TVD 9320 feet/MD 19260 feet
Horizontal Well First and Last Take Points	See above
Completion Target (Formation, TVD and MD)	See above
<b>AFE Capex and Operating Costs</b>	
Drilling Supervision/Month \$	\$8000
Production Supervision/Month \$	\$800
Justification for Supervision Costs	Exhibit 2A, page 2
Requested Risk Charge	Cost + 200%/Exhibit 2A, page 2
<b>Notice of Hearing</b>	
Proposed Notice of Hearing	Exhibit 1
Proof of Mailed Notice of Hearing (20 days before hearing)	Exhibit 4
Proof of Published Notice of Hearing (10 days before hearing)	Exhibit 5
<b>Ownership Determination</b>	
Land Ownership Schematic of the Spacing Unit	Exhibit 2A
Tract List (including lease numbers and owners)	
Pooled Parties (including ownership type)	Exhibit 2B
Unlocatable Parties to be Pooled	
Ownership Depth Severance (including percentage above & below)	None
<b>Joinder</b>	
Sample Copy of Proposal Letter	Exhibit 2C
List of Interest Owners (i.e. Exhibit A of JOA)	Exhibit 2B
Chronology of Contact with Non-Joined Working Interests	Exhibit 2C
Overhead Rates In Proposal Letter	
Cost Estimate to Drill and Complete	Exhibit 2D
Cost Estimate to Equip Well	Exhibit 2D
Cost Estimate for Production Facilities	Exhibit 2D
<b>Geology</b>	
Summary (including special considerations)	Exhibit 3
Spacing Unit Schematic	Exhibit 3-A
Gunbarrel/Lateral Trajectory Schematic	Exhibit 3-A
Well Orientation (with rationale)	Laydown/Exhibit 3
Target Formation	Wolfcamp

H5U Cross Section	Exhibit 3B
Depth Severance Discussion	Not Applicable
<b>Forms, Figures and Tables</b>	
C-102	Exhibit 2A
Tracts	Exhibit 2B
Summary of Interests, Unit Recapitulation (Tracts)	Exhibit 2B
General Location Map (including basin)	Exhibit 2A
Well Bore Location Map	Exhibit 2A
Structure Contour Map - Subsea Depth	Exhibit 3A
Cross Section Location Map (including wells)	Exhibit 3A
Cross Section (including Landing Zone)	Exhibit 3B
<b>Additional Information</b>	
<b>CERTIFICATION: I hereby certify that the information provided in this checklist is complete and accurate.</b>	
<b>Printed Name</b> (Attorney or Party Representative):	James Bruce
<b>Signed Name</b> (Attorney or Party Representative):	
<b>Date:</b>	October 4, 2022