

**STATE OF NEW MEXICO
ENERGY, MINERALS AND NATURAL RESOURCES DEPARTMENT
OIL CONSERVATION DIVISION**

**APPLICATIONS OF E.G.L. REOURCES,
INC. FOR COMPULSORY POOLING, LEA
COUNTY, NEW MEXICO.**

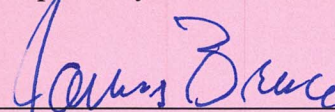
Case Nos. 22605 - 22608

NOTICE OF FILING ADDITIONAL EXHIBIT

E.G.L. Resources, Inc. hereby submits for filing the following:

Replacement Exhibit 2-A, which contains tract plats and updated C-102s.

Respectfully submitted,



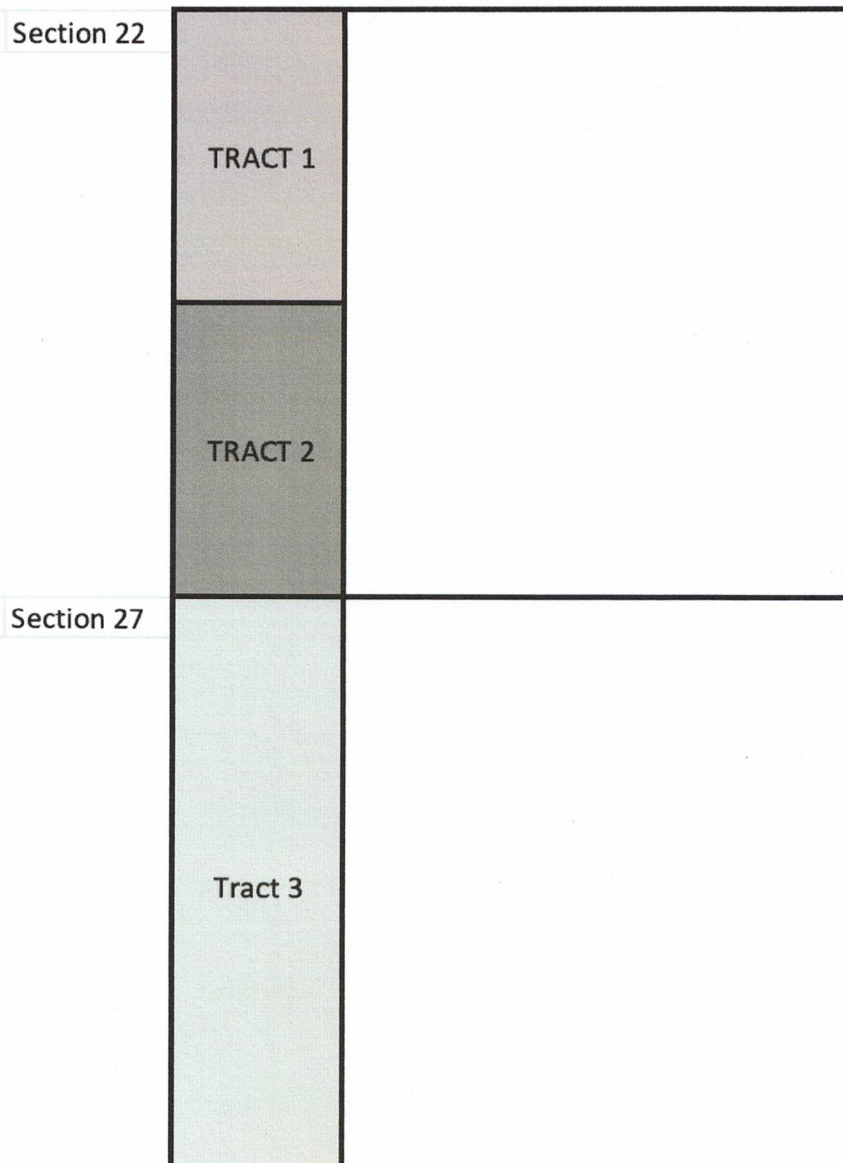
James Bruce
Post Office Box 1056
Santa Fe, New Mexico 87504
(505) 982-2043
jamesbruc@aol.com

Attorney for E.G.L. Resources, Inc.

Exhibit 1-A

Section Plat

Moonraker 22-27 Fed Com Unit
W2W2 Sections 22 & 27
T19S-33E, Lea Count, NM
Bone Spring Formation



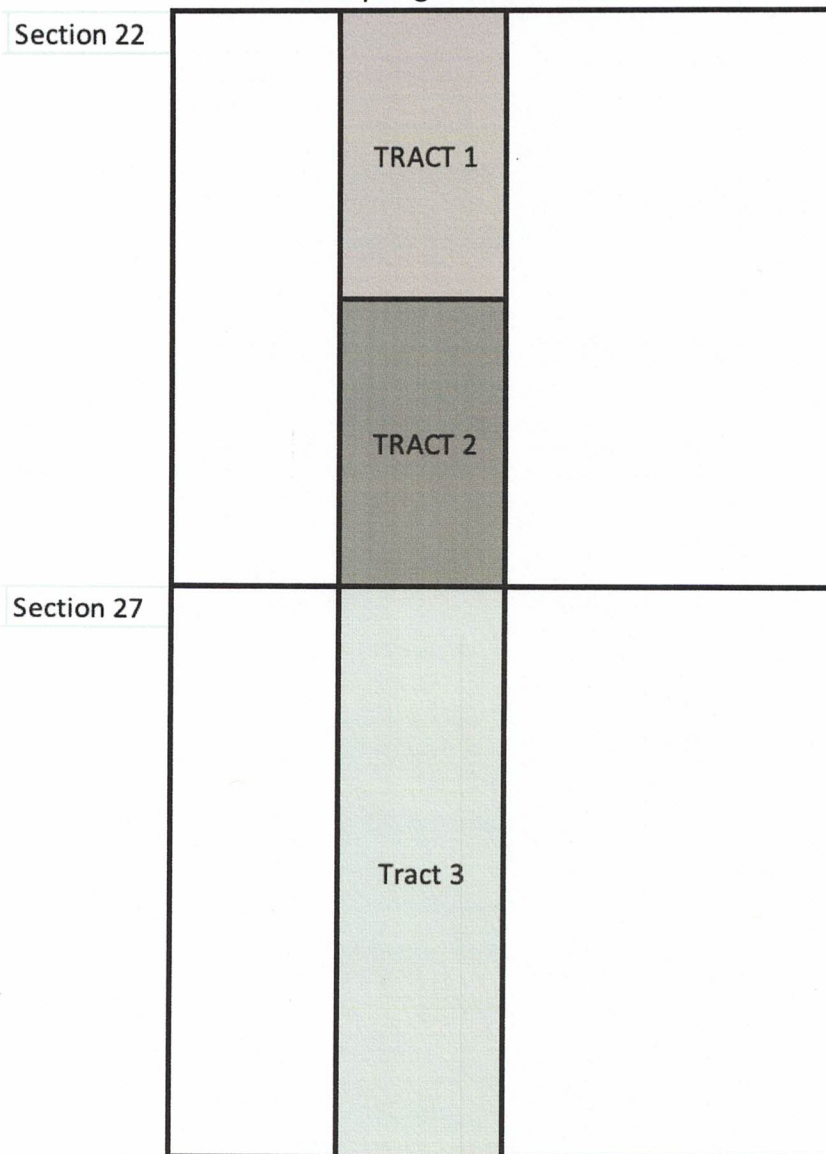
Tract 1: W2NW4 of Section 22 –NMNM 034850
PBEX, LLC

Tract 2: W2SW4 of Section 22 –NMNM 034850
Earthstone Energy, Inc. *
Occidental Petroleum *

Tract 3: W2W2 of Section 27 – NMNM092774
EOG Resources, Inc. *

(Exhibit 1 cont.)

Section Plat
Moonraker 22-27 Fed Com Unit
E2W2 Sections 22 & 27
T19S-33E, Lea Count, NM
Bone Spring Formation



Tract 1: E2NW4 of Section 22 – NMNM 034850
PBEX, LLC

Tract 2: E2SW4 of Section 22 –NMNM 034850
Earthstone Energy, Inc. *
Occidental Petroleum *

Tract 3: E2W2 of Section 27 – NMNM 092774
EOG Resources, Inc. *

(Exhibit 1 cont.)

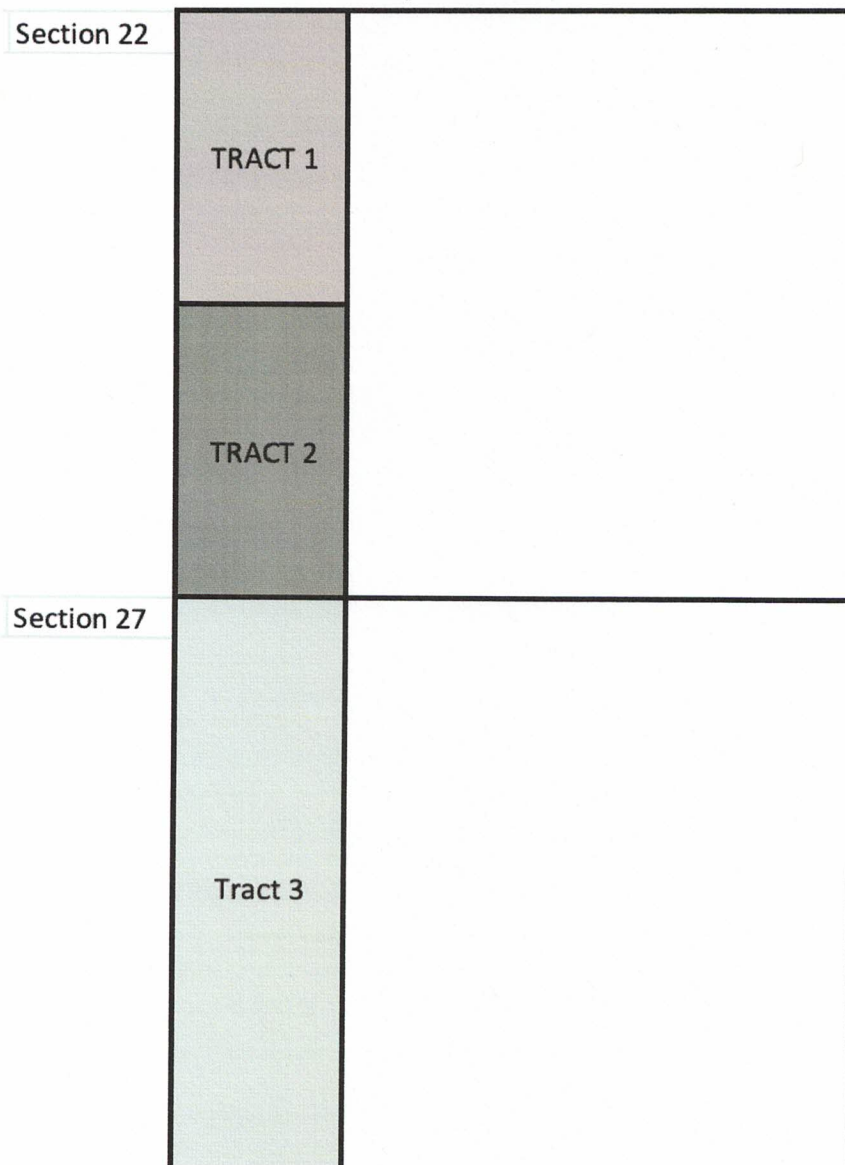
Section Plat

Moonraker 22-27 Fed Com Unit

W2W2 Sections 22 & 27

T19S-33E, Lea Count, NM

Wolfcamp Formation



Tract 1: W2NW4 of Section 22 – NMNM 034850
PBEX, LLC

Tract 2: W2SW4 of Section 22 –NMNM 034850
Occidental Petroleum *

Tract 3: W2W2 of Section 27 – NMNM 092774
EOG Resources, Inc. *

(Exhibit 1 cont.)

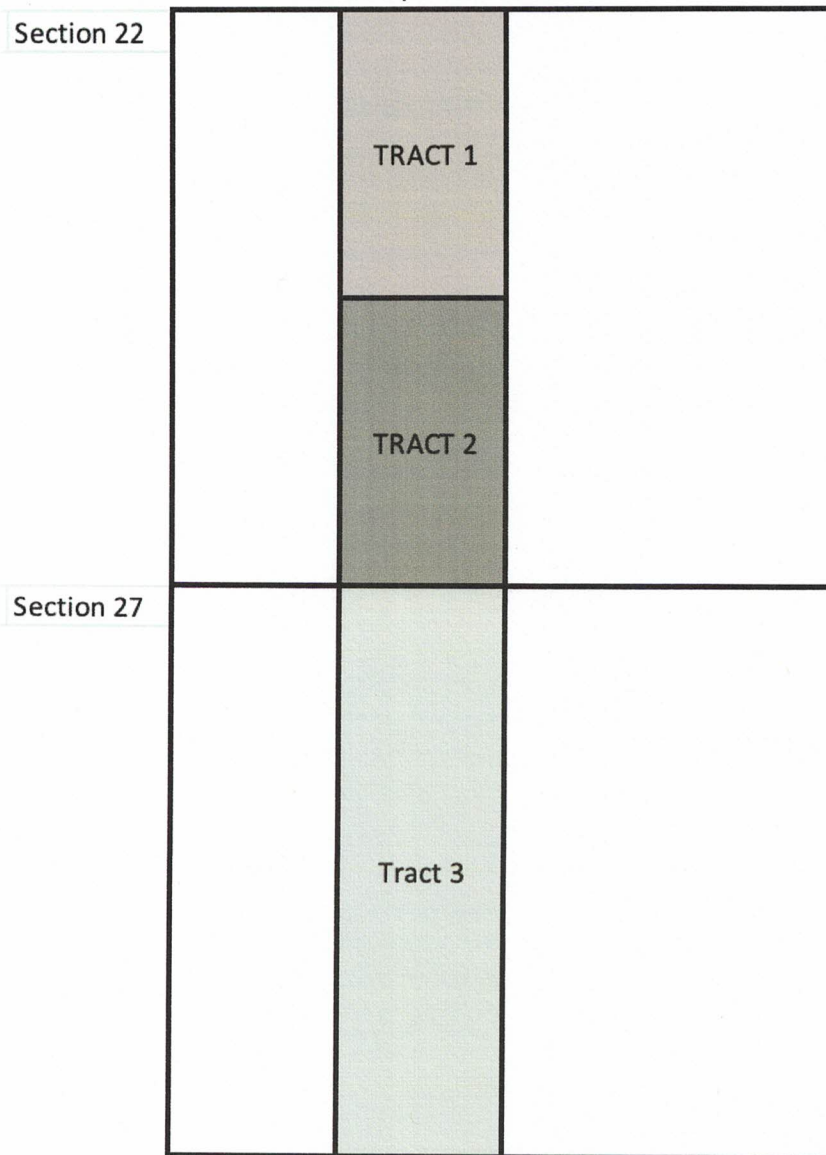
Section Plat

Moonraker 22-27 Fed Com Unit

E2W2 Sections 22 & 27

T19S-33E, Lea Count, NM

Wolfcamp Formation



Tract 1: E2NW4 of Section 22 – NMNM 034850
PBEX, LLC

Tract 2: E2SW4 of Section 22 –NMNM 034850
Earthstone Energy, Inc. *
Occidental Petroleum *

Tract 3: E2W2 of Section 27 – NMNM 092774
EOG Resources, Inc. *

District I
1625 N. French Dr., Hobbs, NM 88240
Phone: (575) 393-6161 Fax: (575) 393-0720
District II
811 S. First St., Artesia, NM 88210
Phone: (575) 748-1283 Fax: (575) 748-9720
District III
1000 Rio Brazos Road, Aztec, NM 87410
Phone: (505) 334-6178 Fax: (505) 334-6170
District IV
1220 S. St. Francis Dr., Santa Fe, NM 87505
Phone: (505) 476-3460 Fax: (505) 476-3462

State of New Mexico
Energy, Minerals & Natural Resources Department
OIL CONSERVATION DIVISION
1220 South St. Francis Dr.
Santa Fe, NM 87505

Form C-102
Revised August 1, 2011
Submit one copy to appropriate
District Office

AMENDED REPORT

WELL LOCATION AND ACREAGE DEDICATION PLAT

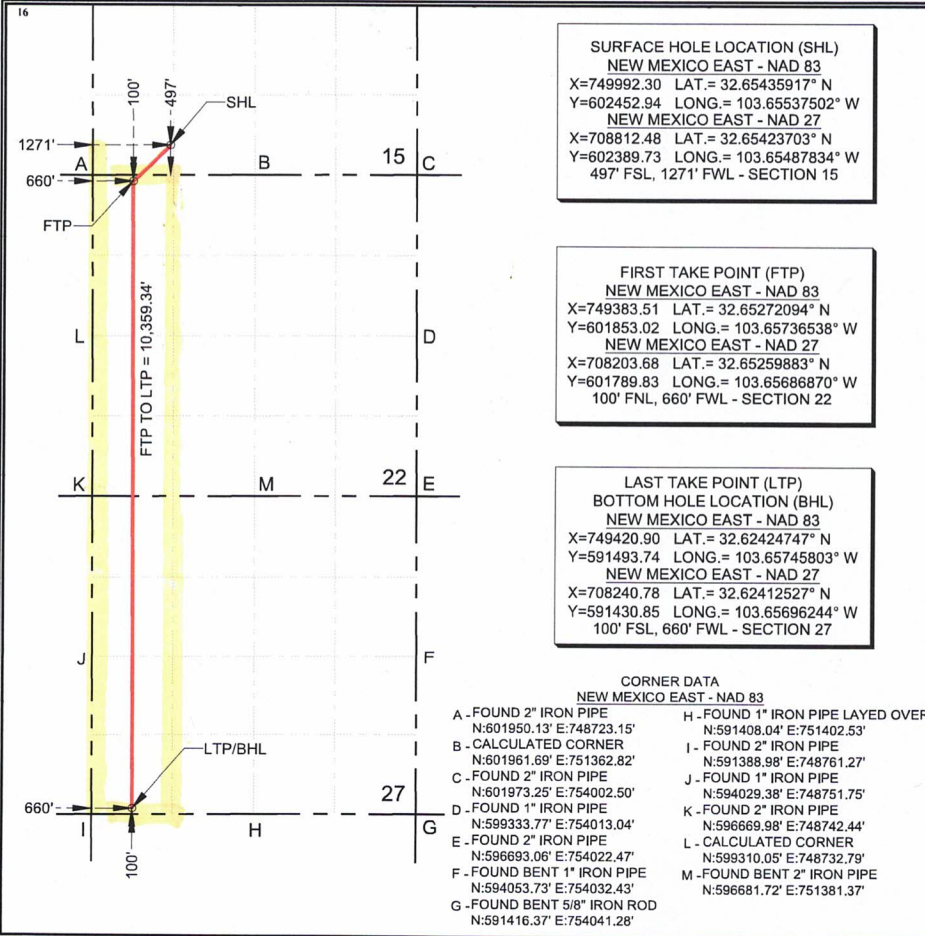
1 API Number	2 Pool Code 59415	3 Pool Name Tonto; Bone Spring
4 Property Code	5 Property Name MOONRAKER 22-27 BS FED	
6 Well Number 201H	7 OGRID No. 192373	
8 Operator Name EGL RESOURCES INC.		9 Elevation 3642.68'

10 Surface Location									
UL or lot no.	Section	Township	Range	Lot Idn	Feet from the	North/South line	Feet from the	East/West line	County
M	15	19-S	33-E		497'	SOUTH	1271'	WEST	LEA

11 Bottom Hole Location If Different From Surface									
UL or lot no.	Section	Township	Range	Lot Idn	Feet from the	North/South line	Feet from the	East/West line	County
M	27	19-S	33-E		100'	SOUTH	660'	WEST	LEA

12 Dedicated Acres	13 Joint or Infill	14 Consolidation Code	15 Order No.
320			

No allowable will be assigned to this completion until all interests have been consolidated or a non-standard unit has been approved by the division.



17 OPERATOR CERTIFICATION
I hereby certify that the information contained herein is true and complete to the best of my knowledge and belief, and that this organization either owns a working interest or unleased mineral interest in the land including the proposed bottom hole location or has a right to drill this well at this location pursuant to a contract with an owner of such a mineral or working interest, or to a voluntary pooling agreement or a compulsory pooling order heretofore entered by the division.

Signature: *Jenifer Sorley* Date: 9/12/2022
Printed Name: Jenifer Sorley
E-mail Address: jenifer.sorley@transgloballlc.com

18 SURVEYOR CERTIFICATION
I hereby certify that the well location shown on this plat was plotted from field notes of actual surveys made by me or under my supervision, and that the same is true and correct to the best of my belief.

Date of Survey: 08/24/2022
Signature and Seal of Professional Surveyor: *Charles L. Jurica*
Certificate Number: 25490

District I
1625 N. French Dr., Hobbs, NM 88240
Phone: (575) 393-6161 Fax: (575) 393-0720
District II
811 S. First St., Artesia, NM 88210
Phone: (575) 748-1283 Fax: (575) 748-9720
District III
1000 Rio Brazos Road, Aztec, NM 87410
Phone: (505) 334-6178 Fax: (505) 334-6170
District IV
1220 S. St. Francis Dr., Santa Fe, NM 87505
Phone: (505) 476-3460 Fax: (505) 476-3462

State of New Mexico
Energy, Minerals & Natural Resources Department
OIL CONSERVATION DIVISION
1220 South St. Francis Dr.
Santa Fe, NM 87505

Form C-102
Revised August 1, 2011
Submit one copy to appropriate
District Office

AMENDED REPORT

WELL LOCATION AND ACREAGE DEDICATION PLAT

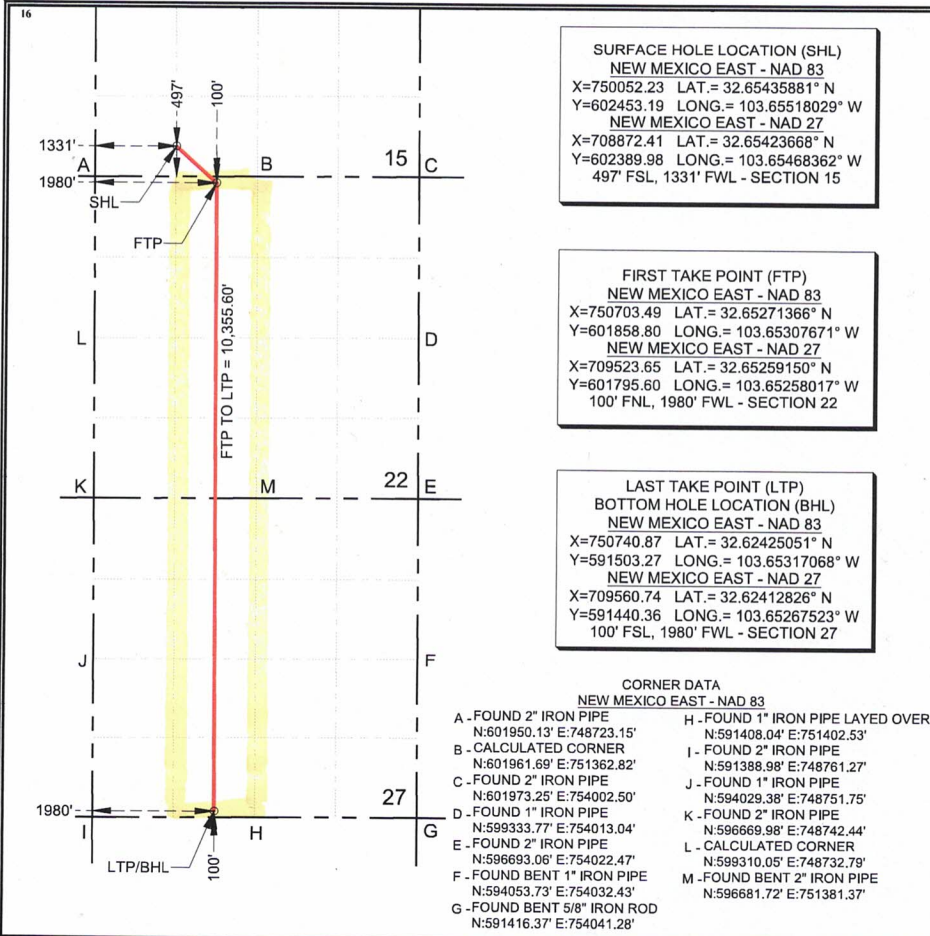
1 API Number		2 Pool Code <i>59475</i>		3 Pool Name <i>Tonto; Bone Spring</i>	
4 Property Code		5 Property Name MOONRAKER 22-27 BS FED			6 Well Number 202H
7 OGRID No. 192373		8 Operator Name EGL RESOURCES INC.			9 Elevation 3643.02'

10 Surface Location									
UL or lot no.	Section	Township	Range	Lot Idn	Feet from the	North/South line	Feet from the	East/West line	County
N	15	19-S	33-E		497'	SOUTH	1331'	WEST	LEA

11 Bottom Hole Location If Different From Surface									
UL or lot no.	Section	Township	Range	Lot Idn	Feet from the	North/South line	Feet from the	East/West line	County
N	27	19-S	33-E		100'	SOUTH	1980'	WEST	LEA

12 Dedicated Acres	13 Joint or Infill	14 Consolidation Code	15 Order No.
320			

No allowable will be assigned to this completion until all interests have been consolidated or a non-standard unit has been approved by the division.



17 OPERATOR CERTIFICATION
I hereby certify that the information contained herein is true and complete to the best of my knowledge and belief, and that this organization either owns a working interest or unleased mineral interest in the land including the proposed bottom hole location or has a right to drill this well at this location pursuant to a contract with an owner of such a mineral or working interest, or to a voluntary pooling agreement or a compulsory pooling order heretofore entered by the division.

Jenifer Sorley 8/29/2022
Signature Date

Jenifer Sorley
Printed Name

jenifer.sorley@transgloballlc.com
E-mail Address

18 SURVEYOR CERTIFICATION
I hereby certify that the well location shown on this plat was plotted from field notes of actual surveys made by me or under my supervision, and that the same is true and correct to the best of my belief.

CHARLES L. JURICA 08/24/2022
Date of Survey

Signature and Seal of Professional Surveyor:
Charles L. Jurica

25490
PROFESSIONAL SURVEYOR
Certificate Number

District I
1625 N. French Dr., Hobbs, NM 88240
Phone: (575) 393-6161 Fax: (575) 393-0720

District II
811 S. First St., Artesia, NM 88210
Phone: (575) 748-1283 Fax: (575) 748-9720

District III
1000 Rio Brazos Road, Aztec, NM 87410
Phone: (505) 334-6178 Fax: (505) 334-6170

District IV
1220 S. St. Francis Dr., Santa Fe, NM 87505
Phone: (505) 476-3460 Fax: (505) 476-3462

State of New Mexico
Energy, Minerals & Natural Resources Department
OIL CONSERVATION DIVISION
1220 South St. Francis Dr.
Santa Fe, NM 87505

Form C-102
Revised August 1, 2011
Submit one copy to appropriate
District Office

AMENDED REPORT

WELL LOCATION AND ACREAGE DEDICATION PLAT

1 API Number		2 Pool Code 59550		3 Pool Name Tonto; Wolfcamp	
4 Property Code		5 Property Name MOONRAKER 22-27 WFC FED			6 Well Number 501H
7 OGRID No. 192373		8 Operator Name EGL RESOURCES INC.			9 Elevation 3642.97'

10 Surface Location

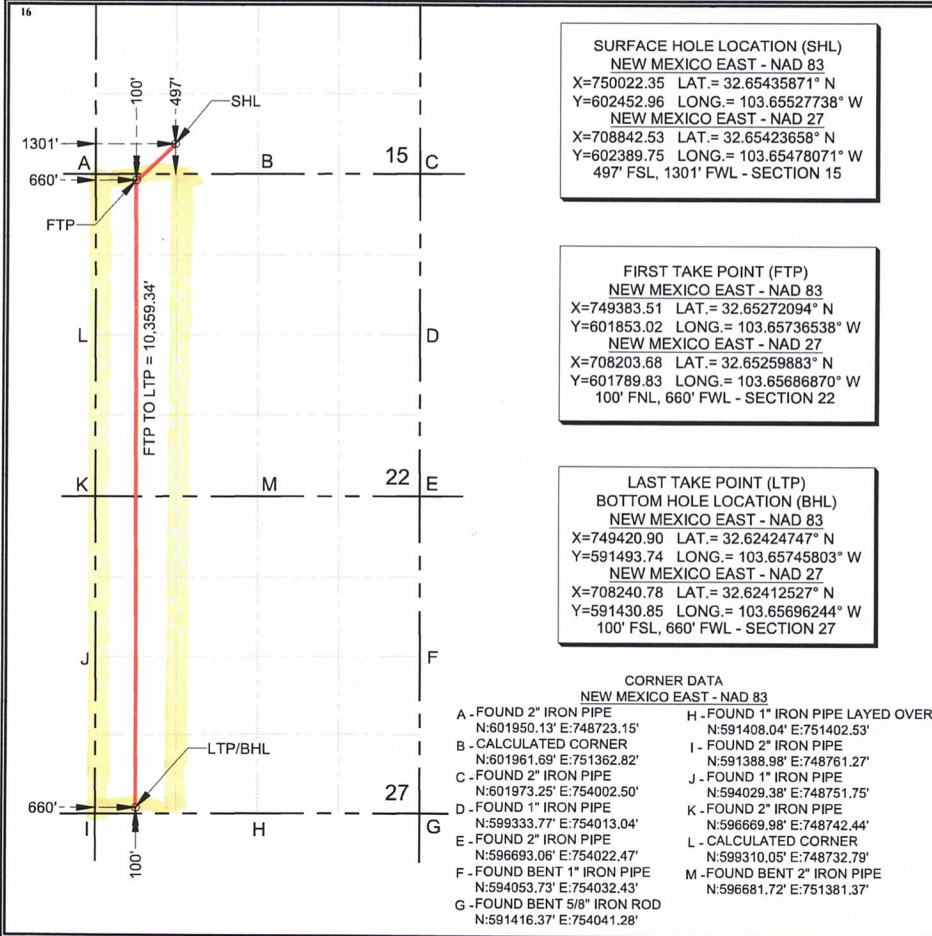
UL or lot no.	Section	Township	Range	Lot Idn	Feet from the	North/South line	Feet from the	East/West line	County
M	15	19-S	33-E		497'	SOUTH	1301'	WEST	LEA

11 Bottom Hole Location If Different From Surface

UL or lot no.	Section	Township	Range	Lot Idn	Feet from the	North/South line	Feet from the	East/West line	County
M	27	19-S	33-E		100'	SOUTH	660'	WEST	LEA

12 Dedicated Acres 3.640	13 Joint or Infill	14 Consolidation Code	15 Order No.
------------------------------------	---------------------------	------------------------------	---------------------

No allowable will be assigned to this completion until all interests have been consolidated or a non-standard unit has been approved by the division.



17 OPERATOR CERTIFICATION
I hereby certify that the information contained herein is true and complete to the best of my knowledge and belief, and that this organization either owns a working interest or unleased mineral interest in the land including the proposed bottom hole location or has a right to drill this well at this location pursuant to a contract with an owner of such a mineral or working interest, or to a voluntary pooling agreement or a compulsory pooling order heretofore entered by the division.

Signature: *Jenifer Sorley* Date: 8/29/2022

Printed Name: Jenifer Sorley

E-mail Address: jenifer.sorley@transgloballc.com

18 SURVEYOR CERTIFICATION
I hereby certify that the well location shown on this plat was plotted from field notes of actual surveys made by me or under my supervision, and that the same is true and correct to the best of my belief.

Date of Survey: 08/24/2022

Signature and Seal of Professional Surveyor: *Charles L. Jurica*

Certificate Number: 25490

