

**STATE OF NEW MEXICO
ENERGY, MINERALS AND NATURAL RESOURCES DEPARTMENT
OIL CONSERVATION DIVISION**

**APPLICATIONS OF EARTHSTONE OPERATING, LLC,
FOR A HORIZONTAL SPACING UNIT AND
COMPULSORY POOLING, LEA COUNTY, NEW MEXICO**

Case Nos. 23372, 23373, 23374 and 23375

NOTICE OF FILING: UPDATED C-102s

Earthstone Operating, LLC, (“Earthstone”) through its undersigned attorneys, hereby submits for filing in the above-referenced cases Updated C-102s, attached hereto as Exhibit 1 for Case No. 23372, Exhibit 2 for Case No. 23373, Exhibit 3 for Case No. 23374 and Exhibit 4 for Case No. 23375. After a hearing before the Oil Conservation Division on March 2, 2023, it was determined that updated C-102s should be submitted, and Earthstone files said C-102s accordingly.

Respectfully submitted,

ABADIE & SCHILL, PC

/s/ Darin C. Savage

Darin C. Savage

Andrew D. Schill
William E. Zimsky
214 McKenzie Street
Santa Fe, New Mexico 87501
Telephone: 970.385.4401
Facsimile: 970.385.4901
darin@abadieschill.com
andrew@abadieschill.com
bill@abadieschill.com

Attorneys for Earthstone Operating, LLC

CERTIFICATE OF SERVICE

I hereby certify that a true and correct copy of the foregoing was filed with the New Mexico Oil Conservation Division and was served on counsel of record via electronic mail on March 7, 2023:

Michael H. Feldewert – mfeldewert@hollandhart.com

Adam G. Rankin – agrankin@hollandhart.com

Julia Broggi – jbroggi@hollandhart.com

Paula M. Vance – pmvance@hollandhart.com

Attorneys for MRC Permian Company

/s/ Darin C. Savage

Darin C. Savage

District I
1625 N. French Dr., Hobbs, NM 88240
District II
811 S. First St., Artesia, NM 88210
District III
1000 Rio Brazon Road, Artec, NM 87410
District IV
1220 S. St Francis Dr., NM 87505
Phone: (505) 476-3460 Fax (505) 476-3462

State of New Mexico
Energy, Minerals & Natural Resources Department
OIL CONSERVATION DIVISION
1220 South St. Francis Dr.
Santa Fe, NM 87505

Form C-102

Revised August 1, 2011

Submit one copy to appropriate District Office

AMENDED REPORT

WELL LOCATION AND ACREAGE DEDICATION PLAT

¹ API Number		² Pool Code 45793		³ Pool Name MESCALERO ESCARPE; BONE SPRING	
⁴ Property Code		⁵ Property Name DELOREAN 9-10 FED COM 1BS			⁶ Well Number 1H
⁷ OGRID No. 331165		⁸ Operator Name EARTHSTONE OPERATING, LLC			⁹ Elevation 3,691.5'

¹⁰ Surface Location

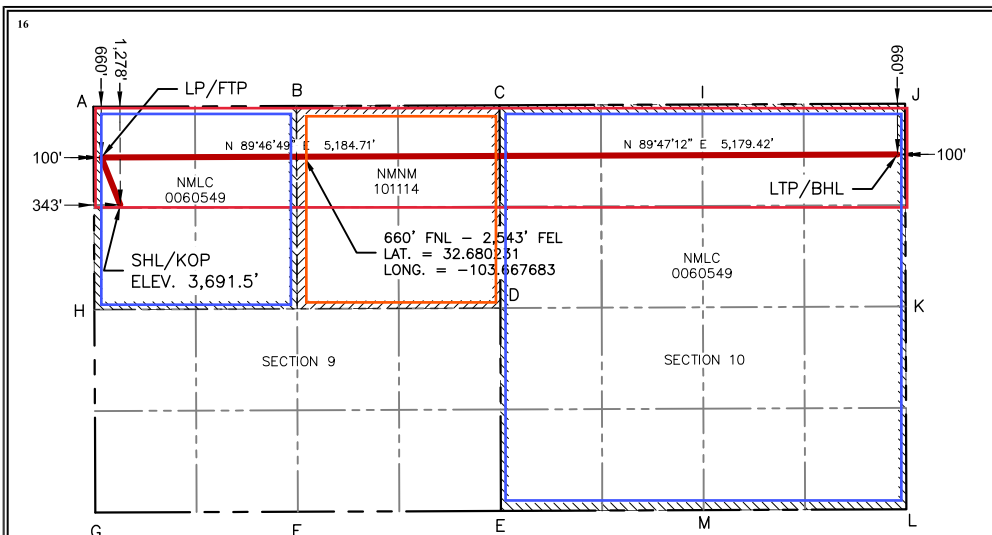
UL or lot no.	Section	Township	Range	Lot Idn	Feet from the	North/South line	Feet from the	East/West line	County
D	9	19 S	33 E		1,278'	NORTH	343'	WEST	LEA

¹⁰ Bottom Hole Location If Different From Surface

UL or lot no.	Section	Township	Range	Lot Idn	Feet from the	North/South line	Feet from the	East/West line	County
A	10	19 S	33 E		660'	NORTH	100'	EAST	LEA

¹² Dedicated Acres 320	¹³ Joint or Infill	¹⁴ Consolidation Code	¹⁵ Order No.
--------------------------------------	-------------------------------	----------------------------------	-------------------------

No allowable will be assigned to this completion until all interests have been consolidated or a non-standard unit has been approved by the division.



¹⁷ OPERATOR CERTIFICATION

I hereby certify that the information contained herein is true and complete to the best of my knowledge and belief, and that this organization either owns a working interest or unleased mineral interest in the land including the proposed bottom hole location or has a right to drill this well at this location pursuant to a contract with an owner of such a mineral or working interest, or to a voluntary pooling agreement or a compulsory pooling order heretofore entered by the division.

Jennifer Elrod 12/13/2022
Signature Date
JENNIFER ELROD 12/13/2022
Printed Name Date
JELROD@EARTHSONEENERGY.COM
Email Address Date

¹⁸ SURVEYOR CERTIFICATION

I hereby certify that the well location shown on this plat was plotted from field notes of actual surveys made by me or under my supervision, and that the same is true and correct to the best of my belief.

Date: 11/16/22



EXHIBIT
1

MARK J. MURRAY P.

SURFACE HOLE LOCATION / KICK OFF POINT	LANDING POINT / FIRST TAKE POINT	LAST TAKE POINT / BOTTOM HOLE LOCATION
1,278' FNL & 343' FWL NEW MEXICO EAST-NAD 83 NORTH:611,214.02' EAST:743,749.92' LAT:32.678547 LONG:-103.675480	660' FNL & 100' FWL NEW MEXICO EAST-NAD 83 NORTH:611,831.58' EAST:743,503.75' LAT:32.680249 LONG:-103.676268	660' FNL & 100' FEL NEW MEXICO EAST-NAD 83 NORTH:611,870.74' EAST:753,867.81' LAT:32.680175 LONG:-103.642584
NEW MEXICO EAST-NAD 27 NORTH:611,150.63' EAST:702,570.41' LAT:32.678425 LONG:-103.674982	NEW MEXICO EAST-NAD 27 NORTH:611,768.17' EAST:702,324.26' LAT:32.680127 LONG:-103.675769	NEW MEXICO EAST-NAD 27 NORTH:611,807.22' EAST:712,688.22' LAT:32.680053 LONG:-103.642087

CORNER COORDINATES NEW MEXICO EAST - NAD 83	
A-FOUND 2" IRON PIPE W/ CAP N:612,491.19' E:743,400.68'	G-FOUND 2" IRON PIPE W/ CAP N:607,209.72' E:743,425.26'
B-CALCULATED CORNER N:612,501.32' E:746,042.97'	H-CALCULATED CORNER N:609,850.46' E:743,412.97'
C-FOUND 2" IRON PIPE W/ CAP N:612,511.46' E:748,685.26'	I-FOUND 1" IRON PIPE W/ CAP N:612,521.06' E:751,326.47'
D-FOUND 1" IRON ROD W/ CAP N:609,870.80' E:748,697.92'	J-FOUND 2" IRON PIPE W/ CAP N:612,531.12' E:753,965.58'
E-FOUND 5/8" IRON ROD W/ CAP N:607,228.58' E:748,703.69'	K-CALCULATED CORNER N:609,890.99' E:753,974.49'
F-FOUND 1" IRON ROD W/ CAP N:607,218.69' E:746,061.00'	L-FOUND 2" IRON PIPE N:607,250.85' E:753,983.40'
	M-FOUND 1" IRON PIPE W/ CAP N:607,240.14' E:751,344.38'

Intent As Drilled

API #		
Operator Name: EARTHSTONE OPERATING, LLC	Property Name: DELOREAN 9-10 FED COM 1BS	Well Number 1H

Kick Off Point (KOP)

UL D	Section	Township	Range	Lot	Feet	From N/S	Feet	From E/W	County
	9	19S	33E		1,278	NORTH	343	WEST	LEA
Latitude 32.678547					Longitude 103.675480				NAD 83

First Take Point (FTP)

UL D	Section	Township	Range	Lot	Feet	From N/S	Feet	From E/W	County
	9	19S	33E		660	NORTH	100	WEST	LEA
Latitude 32.680249					Longitude 103.676268				NAD 83

Last Take Point (LTP)

UL A	Section	Township	Range	Lot	Feet	From N/S	Feet	From E/W	County
	10	19S	33E		660	NORTH	100	EAST	LEA
Latitude 32.680175					Longitude 103.642584				NAD 83

Is this well the defining well for the Horizontal Spacing Unit? YES

Is this well an infill well?

If infill is yes please provide API if available, Operator Name and well number for Defining well for Horizontal Spacing Unit.

API #		
Operator Name:	Property Name:	Well Number

KZ 06/29/2018

District I
1625 N. French Dr., Hobbs, NM 88240
District II
811 S. First St., Artesia, NM 88210
District III
1000 Rio Brazon Road, Artec, NM 87410
District IV
1220 S. St Francis Dr., NM 87505
Phone: (505) 476-3460 Fax (505) 476-3462

State of New Mexico
Energy, Minerals & Natural Resources Department
OIL CONSERVATION DIVISION
1220 South St. Francis Dr.
Santa Fe, NM 87505

Form C-102

Revised August 1, 2011

Submit one copy to appropriate District Office

AMENDED REPORT

WELL LOCATION AND ACREAGE DEDICATION PLAT

¹ API Number		² Pool Code 45793		³ Pool Name MESCALERO ESCARPE; BONE SPRING	
⁴ Property Code		⁵ Property Name DELOREAN 9-10 FED COM 2BS			⁶ Well Number 5H
⁷ OGRID No. 331165		⁸ Operator Name EARTHSTONE OPERATING, LLC			⁹ Elevation 3,691.3'

¹⁰ Surface Location

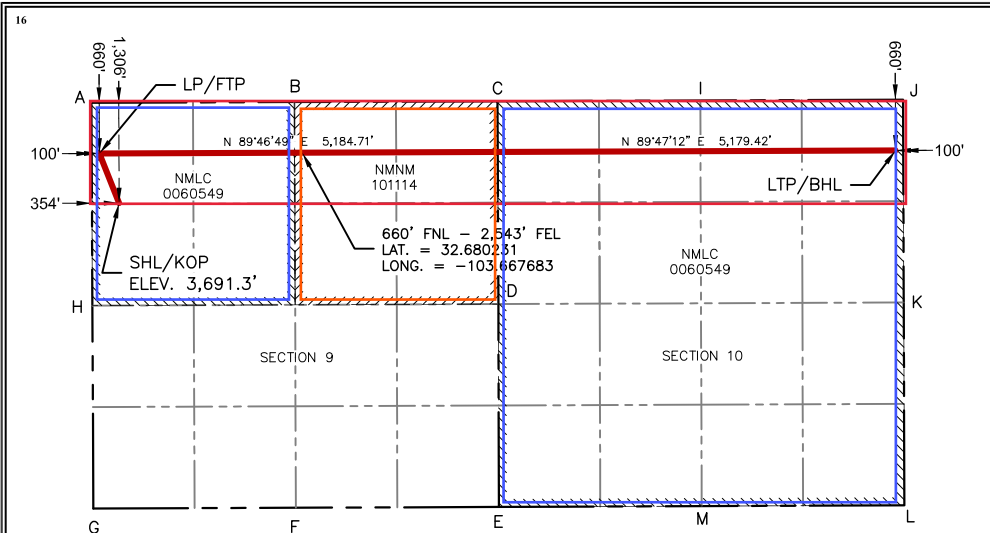
UL or lot no. D	Section 9	Township 19 S	Range 33 E	Lot Idn	Feet from the 1,306'	North/South line NORTH	Feet from the 354'	East/West line WEST	County LEA
---------------------------	---------------------	-------------------------	----------------------	---------	--------------------------------	----------------------------------	------------------------------	-------------------------------	----------------------

¹⁰ Bottom Hole Location If Different From Surface

UL or lot no. A	Section 10	Township 19 S	Range 33 E	Lot Idn	Feet from the 660'	North/South line NORTH	Feet from the 100'	East/West line EAST	County LEA
---------------------------	----------------------	-------------------------	----------------------	---------	------------------------------	----------------------------------	------------------------------	-------------------------------	----------------------

¹² Dedicated Acres 320	¹³ Joint or Infill	¹⁴ Consolidation Code	¹⁵ Order No.
--------------------------------------	-------------------------------	----------------------------------	-------------------------

No allowable will be assigned to this completion until all interests have been consolidated or a non-standard unit has been approved by the division.



¹⁷ OPERATOR CERTIFICATION

I hereby certify that the information contained herein is true and complete to the best of my knowledge and belief, and that this organization either owns a working interest or unleased mineral interest in the land including the proposed bottom hole location or has a right to drill this well at this location pursuant to a contract with an owner of such a mineral or working interest, or to a voluntary pooling agreement or a compulsory pooling order heretofore entered by the division.

Jennifer Elrod 12/13/2022
Signature Date

JENNIFER ELROD 12/13/2022
Printed Name Date

JELROD@EARTHSTONEENERGY.COM
Email Address Date

¹⁸ SURVEYOR CERTIFICATION

I hereby certify that the well location shown on this plat was plotted from field notes of actual surveys made by me or under my supervision, and that the same is true and correct to the best of my belief.

Date: 11/16/22



MARK J. MURRAY P.L.S. NO. 12177

SURFACE HOLE LOCATION / KICK OFF POINT	LANDING POINT / FIRST TAKE POINT	LAST TAKE POINT / BOTTOM HOLE LOCATION
1,306' FNL & 354' FWL NEW MEXICO EAST-NAD 83 NORTH:611,186.14' EAST:743,761.00' LAT:32.678470 LONG:-103.675445	660' FNL & 100' FWL NEW MEXICO EAST-NAD 83 NORTH:611,831.58' EAST:743,503.75' LAT:32.680249 LONG:-103.676268	660' FNL & 100' FEL NEW MEXICO EAST-NAD 83 NORTH:611,870.74' EAST:753,867.81' LAT:32.680175 LONG:-103.642584
NEW MEXICO EAST-NAD 27 NORTH:611,122.75' EAST:702,581.49' LAT:32.678349 LONG:-103.674946	NEW MEXICO EAST-NAD 27 NORTH:611,768.17' EAST:702,324.26' LAT:32.680127 LONG:-103.675769	NEW MEXICO EAST-NAD 27 NORTH:611,807.22' EAST:712,688.22' LAT:32.680053 LONG:-103.642087

CORNER COORDINATES NEW MEXICO EAST - NAD 83	G-FOUND 2" IRON PIPE W/ CAP
A-FOUND 2" IRON PIPE W/ CAP N:612,491.19' E:743,400.68'	N:607,209.72' E:743,425.26'
B-CALCULATED CORNER N:612,501.32' E:746,042.97'	H-CALCULATED CORNER N:609,850.46' E:743,412.97'
C-FOUND 2" IRON PIPE W/ CAP N:612,511.46' E:748,685.26'	I-FOUND 1" IRON PIPE W/ CAP N:612,521.06' E:751,326.47'
D-FOUND 1" IRON ROD W/ CAP N:609,870.80' E:748,697.92'	J-FOUND 2" IRON PIPE W/ CAP N:612,531.12' E:753,965.58'
E-FOUND 5/8" IRON ROD W/ CAP N:607,228.58' E:748,703.69'	K-CALCULATED CORNER N:609,890.99' E:753,974.49'
F-FOUND 1" IRON ROD W/ CAP N:607,218.69' E:746,061.00'	L-FOUND 2" IRON PIPE N:607,250.85' E:753,983.40'
	M-FOUND 1" IRON PIPE W/ CAP N:607,240.14' E:751,344.38'

Intent As Drilled

API #		
Operator Name: EARTHSTONE OPERATING, LLC	Property Name: DELOREAN 9-10 FED COM 2BS	Well Number 5H

Kick Off Point (KOP)

UL D	Section	Township	Range	Lot	Feet	From N/S	Feet	From E/W	County
D	9	19S	33E		1,306	NORTH	354	WEST	LEA
Latitude 32.678470					Longitude 103.675445				NAD 83

First Take Point (FTP)

UL D	Section	Township	Range	Lot	Feet	From N/S	Feet	From E/W	County
D	9	19S	33E		660	NORTH	100	WEST	LEA
Latitude 32.680249					Longitude 103.676268				NAD 83

Last Take Point (LTP)

UL A	Section	Township	Range	Lot	Feet	From N/S	Feet	From E/W	County
A	10	19S	33E		660	NORTH	100	EAST	LEA
Latitude 32.680175					Longitude 103.642584				NAD 83

Is this well the defining well for the Horizontal Spacing Unit? NO

Is this well an infill well? YES

If infill is yes please provide API if available, Operator Name and well number for Defining well for Horizontal Spacing Unit.

API # PENDING		
Operator Name: EARTHSTONE OPERATING, LLC	Property Name: DeLOREAN 9-10 FED COM 1BS	Well Number 1H

KZ 06/29/2018

District I
1625 N. French Dr., Hobbs, NM 88240
District II
811 S. First St., Artesia, NM 88210
District III
1000 Rio Brazon Road, Artec, NM 87410
District IV
1220 S. St Francis Dr., NM 87505
Phone: (505) 476-3460 Fax (505) 476-3462

State of New Mexico
Energy, Minerals & Natural Resources Department
OIL CONSERVATION DIVISION
1220 South St. Francis Dr.
Santa Fe, NM 87505

Form C-102

Revised August 1, 2011

Submit one copy to appropriate District Office

AMENDED REPORT

WELL LOCATION AND ACREAGE DEDICATION PLAT

¹ API Number	² Pool Code 45793	³ Pool Name MESCALERO ESCARPE; BONE SPRING
⁴ Property Code	⁵ Property Name DELOREAN 9-10 FED COM 1BS	⁶ Well Number 3H
⁷ OGRID No. 331165	⁸ Operator Name EARTHSTONE OPERATING, LLC	⁹ Elevation 3,678.4'

¹⁰ Surface Location

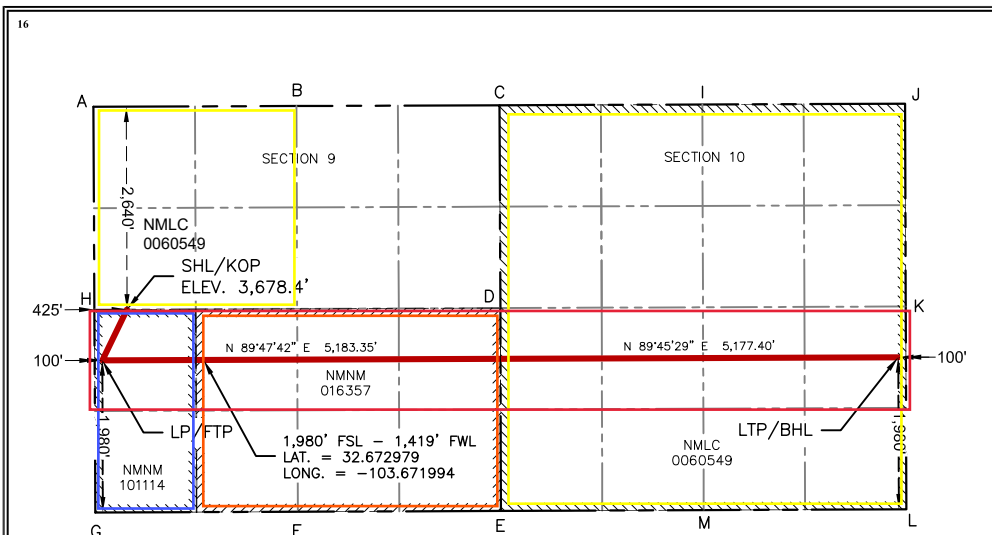
UL or lot no.	Section	Township	Range	Lot Idn	Feet from the	North/South line	Feet from the	East/West line	County
E	9	19 S	33 E		2,640'	NORTH	425'	WEST	LEA

¹⁰ Bottom Hole Location If Different From Surface

UL or lot no.	Section	Township	Range	Lot Idn	Feet from the	North/South line	Feet from the	East/West line	County
I	10	19 S	33 E		1,980'	SOUTH	100'	EAST	LEA

¹² Dedicated Acres 320	¹³ Joint or Infill	¹⁴ Consolidation Code	¹⁵ Order No.
--------------------------------------	-------------------------------	----------------------------------	-------------------------

No allowable will be assigned to this completion until all interests have been consolidated or a non-standard unit has been approved by the division.



¹⁷ OPERATOR CERTIFICATION

I hereby certify that the information contained herein is true and complete to the best of my knowledge and belief, and that this organization either owns a working interest or unleased mineral interest in the land including the proposed bottom hole location or has a right to drill this well at this location pursuant to a contract with an owner of such a mineral or working interest, or to a voluntary pooling agreement or a compulsory pooling order heretofore entered by the division.

Jennifer Elrod 02/16/2023
Signature Date

JENNIFER ELROD
Printed Name Date

JELROD@EARTHSTONEENERGY.COM
Email Address Date

¹⁸ SURVEYOR CERTIFICATION

I hereby certify that the well location shown on this plat was plotted from field notes of actual surveys made by me or under my supervision, and that the same is true and correct to the best of my belief.

Date: 11/16/22



MARK J. MURRAY

EXHIBIT
2

SURFACE HOLE LOCATION / KICK OFF POINT	LANDING POINT / FIRST TAKE POINT	LAST TAKE POINT / BOTTOM HOLE LOCATION
2,640' FNL & 425' FWL NEW MEXICO EAST-NAD 83 NORTH:609,852.45' EAST:743,838.01' LAT:32.674803' LONG:-103.675221'	1,980' FSL & 100' FWL NEW MEXICO EAST-NAD 83 NORTH:609,190.04' EAST:743,516.04' LAT:32.672988' LONG:-103.676281'	1,980' FSL & 100' FFL NEW MEXICO EAST-NAD 83 NORTH:609,230.43' EAST:753,876.72' LAT:32.672918' LONG:-103.642611'
NEW MEXICO EAST-NAD 27 NORTH:609,789.09' EAST:702,658.46' LAT:32.674682' LONG:-103.674723'	NEW MEXICO EAST-NAD 27 NORTH:609,126.71' EAST:702,336.48' LAT:32.672866' LONG:-103.675783'	NEW MEXICO EAST-NAD 27 NORTH:609,166.99' EAST:712,697.05' LAT:32.672796' LONG:-103.642114'

CORNER COORDINATES NEW MEXICO EAST - NAD 83	G-FOUND 2" IRON PIPE W/ CAP N:607,209.72' E:743,425.26'
A-FOUND 2" IRON PIPE W/ CAP N:612,491.19' E:743,400.68'	H-CALCULATED CORNER N:609,850.46' E:743,412.97'
B-CALCULATED CORNER N:612,501.32' E:746,042.97'	I-FOUND 1" IRON PIPE W/ CAP N:612,521.06' E:751,326.47'
C-FOUND 2" IRON PIPE W/ CAP N:612,511.46' E:748,685.26'	J-FOUND 2" IRON PIPE W/ CAP N:612,531.12' E:753,965.58'
D-FOUND 1" IRON ROD W/ CAP N:609,870.80' E:748,697.92'	K-CALCULATED CORNER N:609,890.99' E:753,974.49'
E-FOUND 5/8" IRON ROD W/ CAP N:607,228.58' E:748,703.69'	L-FOUND 2" IRON PIPE N:607,250.85' E:753,983.40'
F-FOUND 1" IRON ROD W/ CAP N:607,218.69' E:746,061.00'	M-FOUND 1" IRON PIPE W/ CAP N:607,240.14' E:751,344.38'

Intent As Drilled

API #		
Operator Name: EARTHSTONE OPERATING, LLC	Property Name: DELOREAN 9-10 FED COM 1BS	Well Number 3H

Kick Off Point (KOP)

UL	Section	Township	Range	Lot	Feet	From N/S	Feet	From E/W	County
E	9	19S	33E		2,640	NORTH	425	WEST	LEA
Latitude					Longitude				NAD
32.674803					103.675221				83

First Take Point (FTP)

UL	Section	Township	Range	Lot	Feet	From N/S	Feet	From E/W	County
L	9	19S	33E		1,980	SOUTH	100	WEST	LEA
Latitude					Longitude				NAD
32.672988					103.676281				83

Last Take Point (LTP)

UL	Section	Township	Range	Lot	Feet	From N/S	Feet	From E/W	County
I	10	19S	33E		1,980	SOUTH	100	EAST	LEA
Latitude					Longitude				NAD
32.672918					103.642611				83

Is this well the defining well for the Horizontal Spacing Unit? NO

Is this well an infill well?

If infill is yes please provide API if available, Operator Name and well number for Defining well for Horizontal Spacing Unit.

API #		
Operator Name: EARTHSTONE OPERATING, LLC	Property Name: DeLOREAN 9 10 FED COM 2BS	Well Number 7H

KZ 06/29/2018

District I
1625 N. French Dr., Hobbs, NM 88240
District II
811 S. First St., Artesia, NM 88210
District III
1000 Rio Brazon Road, Artec, NM 87410
District IV
1220 S. St Francis Dr., NM 87505
Phone: (505) 476-3460 Fax (505) 476-3462

State of New Mexico
Energy, Minerals & Natural Resources Department
OIL CONSERVATION DIVISION
1220 South St. Francis Dr.
Santa Fe, NM 87505

Form C-102

Revised August 1, 2011

Submit one copy to appropriate District Office

AMENDED REPORT

WELL LOCATION AND ACREAGE DEDICATION PLAT

¹ API Number		² Pool Code 45793		³ Pool Name MESCALERO ESCARPE; BONE SPRING	
⁴ Property Code		⁵ Property Name DELOREAN 9-10 FED COM 2BS			⁶ Well Number 7H
⁷ OGRID No. 331165		⁸ Operator Name EARTHSTONE OPERATING, LLC			⁹ Elevation 3,678.0'

¹⁰ Surface Location

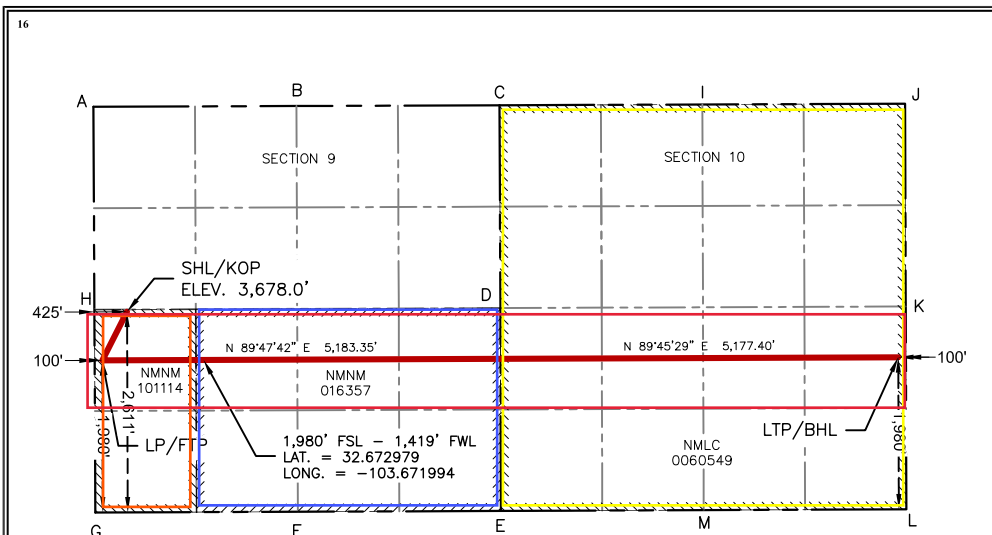
UL or lot no.	Section	Township	Range	Lot Idn	Feet from the	North/South line	Feet from the	East/West line	County
L	9	19 S	33 E		2,611'	SOUTH	425'	WEST	LEA

¹¹ Bottom Hole Location If Different From Surface

UL or lot no.	Section	Township	Range	Lot Idn	Feet from the	North/South line	Feet from the	East/West line	County
I	10	19 S	33 E		1,980'	SOUTH	100'	EAST	LEA

¹² Dedicated Acres 320	¹³ Joint or Infill	¹⁴ Consolidation Code	¹⁵ Order No.
--------------------------------------	-------------------------------	----------------------------------	-------------------------

No allowable will be assigned to this completion until all interests have been consolidated or a non-standard unit has been approved by the division.



¹⁷ OPERATOR CERTIFICATION

I hereby certify that the information contained herein is true and complete to the best of my knowledge and belief, and that this organization either owns a working interest or unleased mineral interest in the land including the proposed bottom hole location or has a right to drill this well at this location pursuant to a contract with an owner of such a mineral or working interest, or to a voluntary pooling agreement or a compulsory pooling order heretofore entered by the division.

Jennifer Elrod 02/16/2023

Signature Date

JENNIFER ELROD Date

JELROD@EARTHSTONEENERGY.COM Date

Email Address Date

¹⁸ SURVEYOR CERTIFICATION

I hereby certify that the well location shown on this plat was plotted from field notes of actual surveys made by me or under my supervision, and that the same is true and correct to the best of my belief.

Date: 11/16/22



MARK J. MURRAY P.L.S. NO. 12177

SURFACE HOLE LOCATION / KICK OFF POINT	LANDING POINT / FIRST TAKE POINT	LAST TAKE POINT / BOTTOM HOLE LOCATION
2,611' FSL & 425' FWL	1,980' FSL & 100' FWL	1,980' FSL & 100' FEL
NEW MEXICO EAST-NAD 83	NEW MEXICO EAST-NAD 83	NEW MEXICO EAST-NAD 83
NORTH: 609,822.42'	NORTH: 609,190.04'	NORTH: 609,230.43'
EAST: 743,838.10'	EAST: 743,516.04'	EAST: 753,876.72'
LAT: 32.674721	LAT: 32.672988	LAT: 32.672918
LONG: -103.675222	LONG: -103.676281	LONG: -103.642611
NEW MEXICO EAST-NAD 27	NEW MEXICO EAST-NAD 27	NEW MEXICO EAST-NAD 27
NORTH: 609,759.06'	NORTH: 609,126.71'	NORTH: 609,166.99'
EAST: 702,658.55'	EAST: 702,336.48'	EAST: 712,697.05'
LAT: 32.674599	LAT: 32.672866	LAT: 32.672796
LONG: -103.674723	LONG: -103.675783	LONG: -103.642114

CORNER COORDINATES	FOUND POINT
NEW MEXICO EAST - NAD 83	G-FOUND 2" IRON PIPE W/ CAP
A-FOUND 2" IRON PIPE W/ CAP	N: 607,209.72' E: 743,425.26'
N: 612,491.19' E: 743,400.68'	H-CALCULATED CORNER
B-CALCULATED CORNER	N: 609,850.46' E: 743,412.97'
N: 612,501.32' E: 746,042.97'	I-FOUND 1" IRON PIPE W/ CAP
C-FOUND 2" IRON PIPE W/ CAP	N: 612,521.06' E: 751,326.47'
N: 612,511.46' E: 748,685.26'	J-FOUND 2" IRON PIPE W/ CAP
D-FOUND 1" IRON ROD W/ CAP	N: 612,531.12' E: 753,965.58'
N: 609,870.80' E: 748,697.92'	K-CALCULATED CORNER
E-FOUND 5/8" IRON ROD W/ CAP	N: 609,890.99' E: 753,974.49'
N: 607,228.58' E: 748,703.69'	L-FOUND 2" IRON PIPE
F-FOUND 1" IRON ROD W/ CAP	N: 607,250.85' E: 753,983.40'
N: 607,218.69' E: 746,061.00'	M-FOUND 1" IRON PIPE W/ CAP
	N: 607,240.14' E: 751,344.38'

Intent As Drilled

API #		
Operator Name: EARTHSTONE OPERATING, LLC	Property Name: DELOREAN 9-10 FED COM 2BS	Well Number 7H

Kick Off Point (KOP)

UL	Section	Township	Range	Lot	Feet	From N/S	Feet	From E/W	County
L	9	19S	33E		2,611	SOUTH	425	WEST	LEA
Latitude					Longitude				NAD
32.674721					103.675222				83

First Take Point (FTP)

UL	Section	Township	Range	Lot	Feet	From N/S	Feet	From E/W	County
L	9	19S	33E		1,980	SOUTH	100	WEST	LEA
Latitude					Longitude				NAD
32.672988					103.676281				83

Last Take Point (LTP)

UL	Section	Township	Range	Lot	Feet	From N/S	Feet	From E/W	County
I	10	19S	33E		1,980	SOUTH	100	EAST	LEA
Latitude					Longitude				NAD
32.672918					103.642611				83

Is this well the defining well for the Horizontal Spacing Unit? YES

Is this well an infill well?

If infill is yes please provide API if available, Operator Name and well number for Defining well for Horizontal Spacing Unit.

API #		
Operator Name:	Property Name:	Well Number

KZ 06/29/2018

District I
1625 N. French Dr., Hobbs, NM 88240
District II
811 S. First St., Artesia, NM 88210
District III
1000 Rio Brazon Road, Artec, NM 87410
District IV
1220 S. St Francis Dr., NM 87505
Phone: (505) 476-3460 Fax (505) 476-3462

State of New Mexico
Energy, Minerals & Natural Resources Department
OIL CONSERVATION DIVISION
1220 South St. Francis Dr.
Santa Fe, NM 87505

Form C-102

Revised August 1, 2011

Submit one copy to appropriate District Office

AMENDED REPORT

WELL LOCATION AND ACREAGE DEDICATION PLAT

¹ API Number		² Pool Code 45793		³ Pool Name MESCALERO ESCARPE; BONE SPRING	
⁴ Property Code		⁵ Property Name DELOREAN 9-10 FED COM 1BS			⁶ Well Number 2H
⁷ OGRID No. 331165		⁸ Operator Name EARTHSTONE OPERATING, LLC			⁹ Elevation 3,690.8'

¹⁰ Surface Location

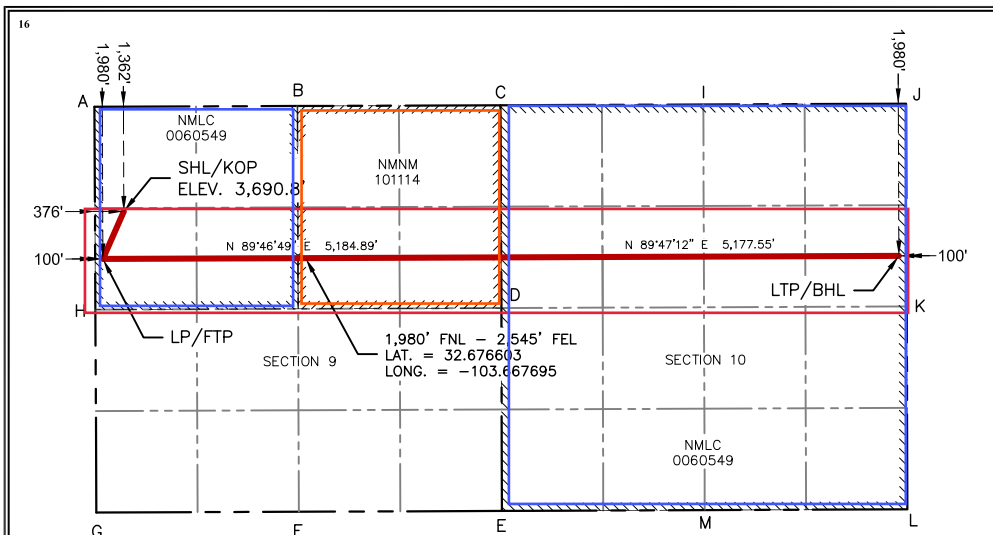
UL or lot no.	Section	Township	Range	Lot Idn	Feet from the	North/South line	Feet from the	East/West line	County
E	9	19 S	33 E		1,362'	NORTH	376'	WEST	LEA

¹⁰ Bottom Hole Location If Different From Surface

UL or lot no.	Section	Township	Range	Lot Idn	Feet from the	North/South line	Feet from the	East/West line	County
H	10	19 S	33 E		1,980'	NORTH	100'	EAST	LEA

¹² Dedicated Acres 320	¹³ Joint or Infill	¹⁴ Consolidation Code	¹⁵ Order No.
--------------------------------------	-------------------------------	----------------------------------	-------------------------

No allowable will be assigned to this completion until all interests have been consolidated or a non-standard unit has been approved by the division.



¹⁷ OPERATOR CERTIFICATION

I hereby certify that the information contained herein is true and complete to the best of my knowledge and belief, and that this organization either owns a working interest or unleased mineral interest in the land including the proposed bottom hole location or has a right to drill this well at this location pursuant to a contract with an owner of such a mineral or working interest, or to a voluntary pooling agreement or a compulsory pooling order heretofore entered by the division.

Jennifer Elrdo 12/13/2022
Signature Date
JENNIFER ELRDO 12/13/2022
Printed Name Date
JELROD@EARTHSONEENERGY.COM
Email Address Date

¹⁸ SURVEYOR CERTIFICATION

I hereby certify that the well location shown on this plat was plotted from field notes of actual surveys made by me or under my supervision, and that the same is true and correct to the best of my belief.

Date: 11/16/22



MARK J. MURRAY

EXHIBIT
3

SURFACE HOLE LOCATION / KICK OFF POINT	LANDING POINT / FIRST TAKE POINT	LAST TAKE POINT / BOTTOM HOLE LOCATION
1,362' FNL & 376' FWL NEW MEXICO EAST-NAD 83 NORTH:611,130.39' EAST:743,783.17' LAT:32.678317 LONG:-103.675374	1,980' FNL & 100' FWL NEW MEXICO EAST-NAD 83 NORTH:610,511.59' EAST:743,509.89' LAT:32.676621 LONG:-103.676274	1,980' FNL & 100' FEL NEW MEXICO EAST-NAD 83 NORTH:610,550.75' EAST:753,872.27' LAT:32.676547 LONG:-103.642598
NEW MEXICO EAST-NAD 27 NORTH:611,067.00' EAST:702,603.66' LAT:32.678195 LONG:-103.674875	NEW MEXICO EAST-NAD 27 NORTH:610,448.22' EAST:702,330.37' LAT:32.676499 LONG:-103.675776	NEW MEXICO EAST-NAD 27 NORTH:610,487.27' EAST:712,692.63' LAT:32.676425 LONG:-103.642101

CORNER COORDINATES		G-FOUND 2" IRON PIPE W/ CAP	
NEW MEXICO EAST - NAD 83	N:607,209.72' E:743,425.26'	H-CALCULATED CORNER	N:609,850.46' E:743,412.97'
A-FOUND 2" IRON PIPE W/ CAP	N:612,491.19' E:743,400.68'	I-FOUND 1" IRON PIPE W/ CAP	N:612,521.06' E:751,326.47'
B-CALCULATED CORNER	N:612,501.32' E:746,042.97'	J-FOUND 2" IRON PIPE W/ CAP	N:612,531.12' E:753,965.58'
C-FOUND 2" IRON PIPE W/ CAP	N:612,511.46' E:748,685.26'	K-CALCULATED CORNER	N:609,890.99' E:753,974.49'
D-FOUND 1" IRON ROD W/ CAP	N:609,870.80' E:748,697.92'	L-FOUND 2" IRON PIPE	N:607,250.85' E:753,983.40'
E-FOUND 5/8" IRON ROD W/ CAP	N:607,228.58' E:748,703.69'	M-FOUND 1" IRON PIPE W/ CAP	N:607,240.14' E:751,344.38'
F-FOUND 1" IRON ROD W/ CAP	N:607,218.69' E:746,061.00'		

Intent As Drilled

API #		
Operator Name: EARTHSTONE OPERATING, LLC	Property Name: DELOREAN 9-10 FED COM 1BS	Well Number 2H

Kick Off Point (KOP)

UL	Section	Township	Range	Lot	Feet	From N/S	Feet	From E/W	County
E	9	19S	33E		1,362	NORTH	376	WEST	LEA
Latitude					Longitude				NAD
32.678317					103.675374				83

First Take Point (FTP)

UL	Section	Township	Range	Lot	Feet	From N/S	Feet	From E/W	County
E	9	19S	33E		1,980	NORTH	100	WEST	LEA
Latitude					Longitude				NAD
32.676621					103.676274				83

Last Take Point (LTP)

UL	Section	Township	Range	Lot	Feet	From N/S	Feet	From E/W	County
H	10	19S	33E		1,980	NORTH	100	EAST	LEA
Latitude					Longitude				NAD
32.676547					103.642598				83

Is this well the defining well for the Horizontal Spacing Unit?

Is this well an infill well?

If infill is yes please provide API if available, Operator Name and well number for Defining well for Horizontal Spacing Unit.

API #		
Operator Name:	Property Name:	Well Number

KZ 06/29/2018

District I
1625 N. French Dr., Hobbs, NM 88240
District II
811 S. First St., Artesia, NM 88210
District III
1000 Rio Brazon Road, Artec, NM 87410
District IV
1220 S. St Francis Dr., NM 87505
Phone: (505) 476-3460 Fax (505) 476-3462

State of New Mexico
Energy, Minerals & Natural Resources Department
OIL CONSERVATION DIVISION
1220 South St. Francis Dr.
Santa Fe, NM 87505

Form C-102
Revised August 1, 2011
Submit one copy to appropriate District Office
 AMENDED REPORT

WELL LOCATION AND ACREAGE DEDICATION PLAT

¹ API Number		² Pool Code 45793		³ Pool Name MESCALERO ESCARPE; BONE SPRING	
⁴ Property Code		⁵ Property Name DELOREAN 9-10 FED COM 2BS			⁶ Well Number 6H
⁷ OGRID No. 331165		⁸ Operator Name EARTHSTONE OPERATING, LLC			⁹ Elevation 3,691.1'

¹⁰ Surface Location

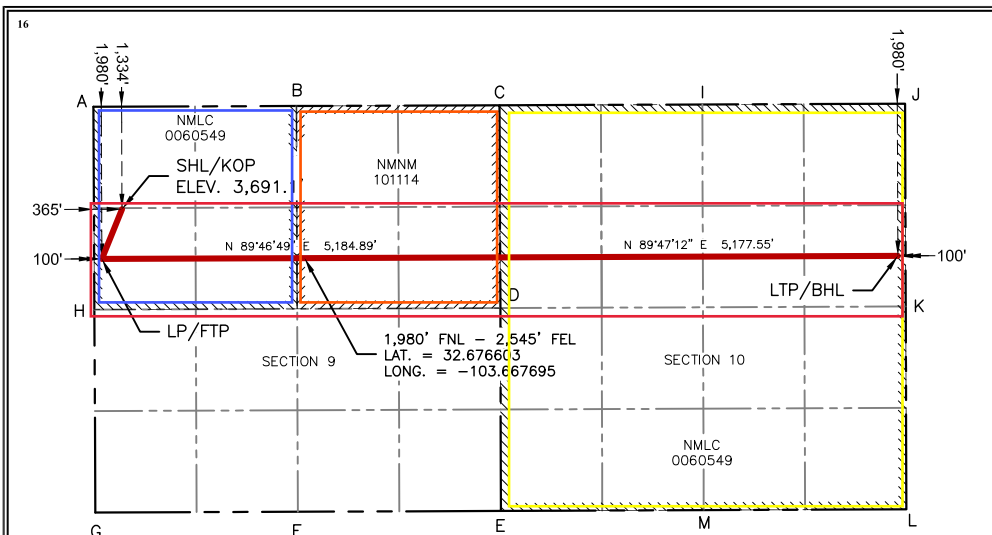
UL or lot no.	Section	Township	Range	Lot Idn	Feet from the	North/South line	Feet from the	East/West line	County
E	9	19 S	33 E		1,334'	NORTH	365'	WEST	LEA

¹⁰ Bottom Hole Location If Different From Surface

UL or lot no.	Section	Township	Range	Lot Idn	Feet from the	North/South line	Feet from the	East/West line	County
H	10	19 S	33 E		1,980'	NORTH	100'	EAST	LEA

¹² Dedicated Acres 320	¹³ Joint or Infill	¹⁴ Consolidation Code	¹⁵ Order No.
--------------------------------------	-------------------------------	----------------------------------	-------------------------

No allowable will be assigned to this completion until all interests have been consolidated or a non-standard unit has been approved by the division.



SURFACE HOLE LOCATION / KICK OFF POINT	LANDING POINT / FIRST TAKE POINT	LAST TAKE POINT / BOTTOM HOLE LOCATION
1,334' FNL & 365' FWL NEW MEXICO EAST-NAD 83 NORTH:611,158.26' EAST:743,772.09' LAT:32.678294 LONG:-103.675409	1,980' FNL & 100' FWL NEW MEXICO EAST-NAD 83 NORTH:610,511.59' EAST:743,509.89' LAT:32.676621 LONG:-103.676274	1,980' FNL & 100' FEL NEW MEXICO EAST-NAD 83 NORTH:610,550.75' EAST:753,872.27' LAT:32.676547 LONG:-103.642598
NEW MEXICO EAST-NAD 27 NORTH:611,094.87' EAST:702,592.58' LAT:32.678272 LONG:-103.674911	NEW MEXICO EAST-NAD 27 NORTH:610,448.22' EAST:702,330.37' LAT:32.676499 LONG:-103.675776	NEW MEXICO EAST-NAD 27 NORTH:610,487.27' EAST:712,692.63' LAT:32.676425 LONG:-103.642101

CORNER COORDINATES	
NEW MEXICO EAST - NAD 83	G-FOUND 2" IRON PIPE W/ CAP N:607,209.72' E:743,425.26'
A-FOUND 2" IRON PIPE W/ CAP	H-CALCULATED CORNER N:612,491.19' E:743,400.68'
B-CALCULATED CORNER	I-FOUND 1" IRON PIPE W/ CAP N:612,501.32' E:746,042.97'
C-FOUND 2" IRON PIPE W/ CAP	J-FOUND 2" IRON PIPE W/ CAP N:612,511.46' E:748,685.26'
D-FOUND 1" IRON ROD W/ CAP	K-CALCULATED CORNER N:609,870.80' E:748,697.92'
E-FOUND 5/8" IRON ROD W/ CAP	L-FOUND 2" IRON PIPE N:607,228.58' E:748,703.69'
F-FOUND 1" IRON ROD W/ CAP	M-FOUND 1" IRON PIPE W/ CAP N:607,218.69' E:746,061.00'

¹⁷ OPERATOR CERTIFICATION

I hereby certify that the information contained herein is true and complete to the best of my knowledge and belief, and that this organization either owns a working interest or unleased mineral interest in the land including the proposed bottom hole location or has a right to drill this well at this location pursuant to a contract with an owner of such a mineral or working interest, or to a voluntary pooling agreement or a compulsory pooling order heretofore entered by the division.

Jennifer Elrod 01/31/2023
Signature Date

JENNIFER ELROD
Printed Name Date

JELROD@EARTHSTONEENERGY.COM
Email Address Date

¹⁸ SURVEYOR CERTIFICATION

I hereby certify that the well location shown on this plat was plotted from field notes of actual surveys made by me or under my supervision, and that the same is true and correct to the best of my belief.

Date: 11/16/22



MARK J. MURRAY P.L.S. NO. 12177

Intent As Drilled

API #		
Operator Name: EARTHSTONE OPERATING, LLC	Property Name: DELOREAN 9-10 FED COM 2BS	Well Number 6H

Kick Off Point (KOP)

UL	Section	Township	Range	Lot	Feet	From N/S	Feet	From E/W	County
E	9	19S	33E		1,334	NORTH	365	WEST	LEA
Latitude					Longitude				NAD
32.678394					103.675409				83

First Take Point (FTP)

UL	Section	Township	Range	Lot	Feet	From N/S	Feet	From E/W	County
E	9	19S	33E		1,980	NORTH	100	WEST	LEA
Latitude					Longitude				NAD
32.676621					103.676274				83

Last Take Point (LTP)

UL	Section	Township	Range	Lot	Feet	From N/S	Feet	From E/W	County
H	10	19S	33E		1,980	NORTH	100	EAST	LEA
Latitude					Longitude				NAD
32.676547					103.642598				83

Is this well the defining well for the Horizontal Spacing Unit? NO

Is this well an infill well? YES

If infill is yes please provide API if available, Operator Name and well number for Defining well for Horizontal Spacing Unit.

API #		
Operator Name: EARTHSTONE OPERATING, LLC	Property Name: DELOREAN 9-10 FED COM 1BS	Well Number 6H

KZ 06/29/2018

District I
1625 N. French Dr., Hobbs, NM 88240
District II
811 S. First St., Artesia, NM 88210
District III
1000 Rio Brazon Road, Artec, NM 87410
District IV
1220 S. St Francis Dr., NM 87505
Phone: (505) 476-3460 Fax (505) 476-3462

State of New Mexico
Energy, Minerals & Natural Resources Department
OIL CONSERVATION DIVISION
1220 South St. Francis Dr.
Santa Fe, NM 87505

Form C-102

Revised August 1, 2011

Submit one copy to appropriate
District Office

AMENDED REPORT

WELL LOCATION AND ACREAGE DEDICATION PLAT

¹ API Number		² Pool Code 45793		³ Pool Name MESCALERO ESCARPE; BONE SPRING	
⁴ Property Code		⁵ Property Name DELOREAN 9-10 FED COM 1BS			⁶ Well Number 4H
⁷ OGRID No. 331165		⁸ Operator Name EARTHSTONE OPERATING, LLC			⁹ Elevation 3,667.6'

¹⁰ Surface Location

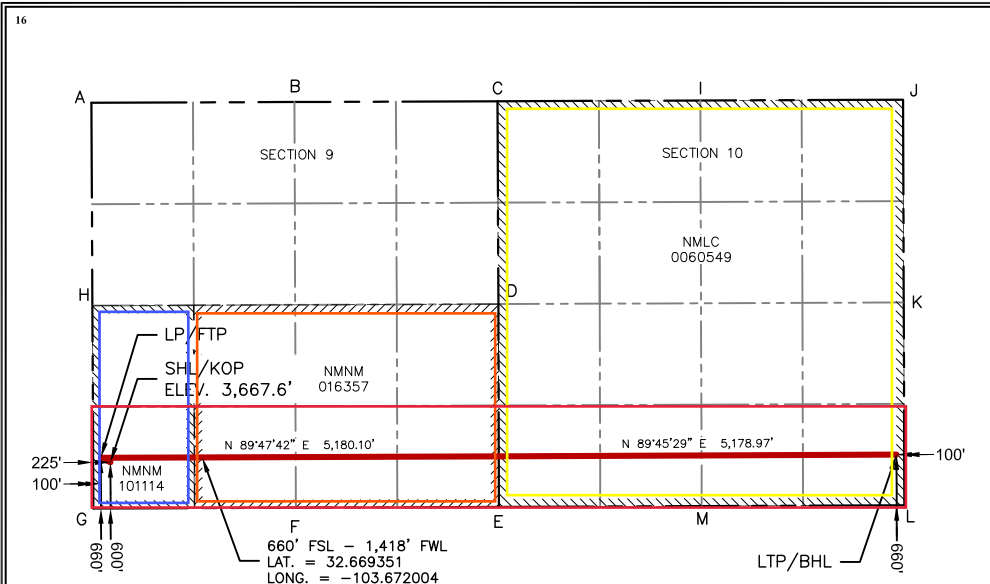
UL or lot no. M	Section 9	Township 19 S	Range 33 E	Lot Idn	Feet from the 600'	North/South line SOUTH	Feet from the 225'	East/West line WEST	County LEA
--------------------	--------------	------------------	---------------	---------	-----------------------	---------------------------	-----------------------	------------------------	---------------

¹¹ Bottom Hole Location If Different From Surface

UL or lot no. P	Section 10	Township 19 S	Range 33 E	Lot Idn	Feet from the 660'	North/South line SOUTH	Feet from the 100'	East/West line EAST	County LEA
--------------------	---------------	------------------	---------------	---------	-----------------------	---------------------------	-----------------------	------------------------	---------------

¹² Dedicated Acres 320	¹³ Joint or Infill	¹⁴ Consolidation Code	¹⁵ Order No.
--------------------------------------	-------------------------------	----------------------------------	-------------------------

No allowable will be assigned to this completion until all interests have been consolidated or a non-standard unit has been approved by the division.



SURFACE HOLE LOCATION / KICK OFF POINT 600' FSL & 225' FWL	LANDING POINT / FIRST TAKE POINT 660' FSL & 100' FWL	LAST TAKE POINT / BOTTOM HOLE LOCATION 660' FSL & 100' FEL
NEW MEXICO EAST-NAD 83 NORTH:607,810.49' EAST:743,647.54' LAT:32.669194 LONG:-103.675881	NEW MEXICO EAST-NAD 83 NORTH:607,870.06' EAST:743,522.19' LAT:32.669360 LONG:-103.676287	NEW MEXICO EAST-NAD 83 NORTH:607,910.44' EAST:753,881.18' LAT:32.669290 LONG:-103.642625
NEW MEXICO EAST-NAD 27 NORTH:607,747.19' EAST:702,467.94' LAT:32.669072 LONG:-103.675383	NEW MEXICO EAST-NAD 27 NORTH:607,806.76' EAST:702,342.59' LAT:32.669238 LONG:-103.675790	NEW MEXICO EAST-NAD 27 NORTH:607,847.03' EAST:712,701.47' LAT:32.669168 LONG:-103.642128

CORNER COORDINATES NEW MEXICO EAST - NAD 83	G-FOUND 2" IRON PIPE W/ CAP N:607,209.72' E:743,425.26'
A-FOUND 2" IRON PIPE W/ CAP N:612,491.19' E:743,400.68'	H-CALCULATED CORNER N:609,850.46' E:743,412.97'
B-CALCULATED CORNER N:612,501.32' E:746,042.97'	I-FOUND 1" IRON PIPE W/ CAP N:612,521.06' E:751,326.47'
C-FOUND 2" IRON PIPE W/ CAP N:612,511.46' E:748,685.26'	J-FOUND 2" IRON PIPE W/ CAP N:612,531.12' E:753,965.58'
D-FOUND 1" IRON ROD W/ CAP N:609,870.80' E:748,697.92'	K-CALCULATED CORNER N:609,890.99' E:753,974.49'
E-FOUND 5/8" IRON ROD W/ CAP N:607,228.58' E:748,703.69'	L-FOUND 2" IRON PIPE N:607,250.85' E:753,983.40'
F-FOUND 1" IRON ROD W/ CAP N:607,218.69' E:746,061.00'	M-FOUND 1" IRON PIPE W/ CAP N:607,240.14' E:751,344.38'

¹⁷ OPERATOR CERTIFICATION

I hereby certify that the information contained herein is true and complete to the best of my knowledge and belief, and that this organization either owns a working interest or unleased mineral interest in the land including the proposed bottom hole location or has a right to drill this well at this location pursuant to a contract with an owner of such a mineral or working interest, or to a voluntary pooling agreement or a compulsory pooling order heretofore entered by the division.

Jennifer Elrod 02/16/2023
Signature Date

JENNIFER ELROD
Printed Name Date

JELROD@EARTHSTONEENERGY.COM
Email Address Date

¹⁸ SURVEYOR CERTIFICATION

I hereby certify that the well location shown on this plat was plotted from field notes of actual surveys made by me or under my supervision, and that the same is true and correct to the best of my belief.

Date: 11/16/22



MARK J. MURRAY

EXHIBIT
4

Intent As Drilled

API #		
Operator Name: EARTHSTONE OPERATING, LLC	Property Name: DELOREAN 9-10 FED COM 1BS	Well Number 4H

Kick Off Point (KOP)

UL	Section	Township	Range	Lot	Feet	From N/S	Feet	From E/W	County
M	9	19S	33E		600	SOUTH	225	WEST	LEA
Latitude					Longitude				NAD
32.669194					103.675881				83

First Take Point (FTP)

UL	Section	Township	Range	Lot	Feet	From N/S	Feet	From E/W	County
M	9	19S	33E		660	SOUTH	100	WEST	LEA
Latitude					Longitude				NAD
32.669360					103.676287				83

Last Take Point (LTP)

UL	Section	Township	Range	Lot	Feet	From N/S	Feet	From E/W	County
P	10	19S	33E		660	SOUTH	100	EAST	LEA
Latitude					Longitude				NAD
32.669290					103.642625				83

Is this well the defining well for the Horizontal Spacing Unit? NO

Is this well an infill well? YES

If infill is yes please provide API if available, Operator Name and well number for Defining well for Horizontal Spacing Unit.

API #		
Operator Name: EARTHSTONE OPERTING, LLC	Property Name: DeLOREAN 9 10 FED COM 2BS	Well Number 88H

KZ 06/29/2018

District I
1625 N. French Dr., Hobbs, NM 88240
District II
811 S. First St., Artesia, NM 88210
District III
1000 Rio Brazon Road, Artec, NM 87410
District IV
1220 S. St Francis Dr., NM 87505
Phone: (505) 476-3460 Fax (505) 476-3462

State of New Mexico
Energy, Minerals & Natural Resources Department
OIL CONSERVATION DIVISION
1220 South St. Francis Dr.
Santa Fe, NM 87505

Form C-102

Revised August 1, 2011

Submit one copy to appropriate District Office

AMENDED REPORT

WELL LOCATION AND ACREAGE DEDICATION PLAT

¹ API Number		² Pool Code 45793		³ Pool Name MESCALERO ESCARPE; BONE SPRING	
⁴ Property Code		⁵ Property Name DELOREAN 9-10 FED COM 2BS			⁶ Well Number 88H
⁷ OGRID No. 331165		⁸ Operator Name EARTHSTONE OPERATING, LLC			⁹ Elevation 3,667.6'

¹⁰ Surface Location

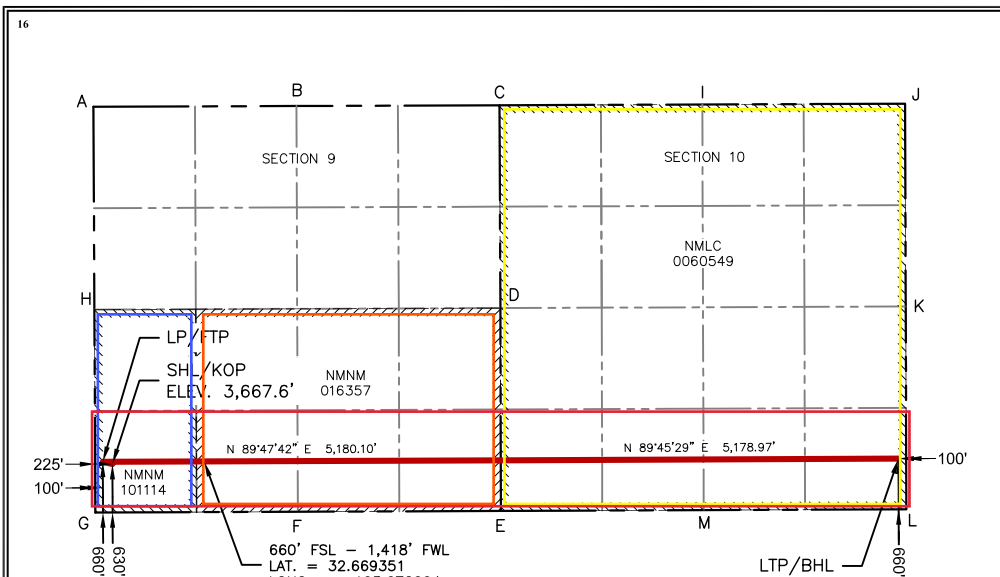
UL or lot no.	Section	Township	Range	Lot Idn	Feet from the	North/South line	Feet from the	East/West line	County
M	9	19 S	33 E		630'	SOUTH	225'	WEST	LEA

¹¹ Bottom Hole Location If Different From Surface

UL or lot no.	Section	Township	Range	Lot Idn	Feet from the	North/South line	Feet from the	East/West line	County
P	10	19 S	33 E		660'	SOUTH	100'	EAST	LEA

¹² Dedicated Acres 320	¹³ Joint or Infill	¹⁴ Consolidation Code	¹⁵ Order No.
--------------------------------------	-------------------------------	----------------------------------	-------------------------

No allowable will be assigned to this completion until all interests have been consolidated or a non-standard unit has been approved by the division.



SURFACE HOLE LOCATION / KICK OFF POINT	LANDING POINT / FIRST TAKE POINT	LAST TAKE POINT / BOTTOM HOLE LOCATION
630' FSL & 225' FWL NEW MEXICO EAST-NAD 83 NORTH:607,840.54' EAST:743,647.36' LAT:32.669277 LONG:-103.675881	660' FSL & 100' FWL NEW MEXICO EAST-NAD 83 NORTH:607,870.06' EAST:743,522.19' LAT:32.669360 LONG:-103.676287	660' FSL & 100' FEL NEW MEXICO EAST-NAD 83 NORTH:607,910.44' EAST:753,881.18' LAT:32.669290 LONG:-103.642625
NEW MEXICO EAST-NAD 27 NORTH:607,777.24' EAST:702,467.75' LAT:32.669155 LONG:-103.675383	NEW MEXICO EAST-NAD 27 NORTH:607,806.76' EAST:702,342.59' LAT:32.669238 LONG:-103.675790	NEW MEXICO EAST-NAD 27 NORTH:607,847.03' EAST:712,701.47' LAT:32.669168 LONG:-103.642128

CORNER COORDINATES NEW MEXICO EAST - NAD 83	
A-FOUND 2" IRON PIPE W/ CAP N:612,491.19' E:743,400.68'	G-FOUND 2" IRON PIPE W/ CAP N:607,209.72' E:743,425.26'
B-CALCULATED CORNER N:612,501.32' E:746,042.97'	H-CALCULATED CORNER N:609,850.46' E:743,412.97'
C-FOUND 2" IRON PIPE W/ CAP N:612,511.46' E:748,685.26'	I-FOUND 1" IRON PIPE W/ CAP N:612,521.06' E:751,326.47'
D-FOUND 1" IRON ROD W/ CAP N:609,870.80' E:748,697.92'	J-FOUND 2" IRON PIPE W/ CAP N:612,531.12' E:753,965.58'
E-FOUND 5/8" IRON ROD W/ CAP N:607,228.58' E:748,703.69'	K-CALCULATED CORNER N:609,890.99' E:753,974.49'
F-FOUND 1" IRON ROD W/ CAP N:607,218.69' E:746,061.00'	L-FOUND 2" IRON PIPE N:607,250.85' E:753,983.40'
	M-FOUND 1" IRON PIPE W/ CAP N:607,240.14' E:751,344.38'

¹⁷ OPERATOR CERTIFICATION

I hereby certify that the information contained herein is true and complete to the best of my knowledge and belief, and that this organization either owns a working interest or unleased mineral interest in the land including the proposed bottom hole location or has a right to drill this well at this location pursuant to a contract with an owner of such a mineral or working interest, or to a voluntary pooling agreement or a compulsory pooling order heretofore entered by the division.

Jennifer Elrod 02/16/2023
Signature Date

JENNIFER ELROD
Printed Name Date

ELROD@EARTHSTONEENERGY.COM
Email Address Date

¹⁸ SURVEYOR CERTIFICATION

I hereby certify that the well location shown on this plat was plotted from field notes of actual surveys made by me or under my supervision, and that the same is true and correct to the best of my belief.

Date: 11/16/22



MARK J. MURRAY P.L.S. NO. 12177

Intent As Drilled

API #		
Operator Name: EARTHSTONE OPERATING, LLC	Property Name: DELOREAN 9-10 FED COM 2BS	Well Number 88H

Kick Off Point (KOP)

UL	Section	Township	Range	Lot	Feet	From N/S	Feet	From E/W	County
M	9	19S	33E		630	SOUTH	225	WEST	LEA
Latitude					Longitude				NAD
32.669277					103.675881				83

First Take Point (FTP)

UL	Section	Township	Range	Lot	Feet	From N/S	Feet	From E/W	County
M	9	19S	33E		660	SOUTH	100	WEST	LEA
Latitude					Longitude				NAD
32.669360					103.676287				83

Last Take Point (LTP)

UL	Section	Township	Range	Lot	Feet	From N/S	Feet	From E/W	County
P	10	19S	33E		660	SOUTH	100	EAST	LEA
Latitude					Longitude				NAD
32.669290					103.642625				83

Is this well the defining well for the Horizontal Spacing Unit?

Is this well an infill well?

If infill is yes please provide API if available, Operator Name and well number for Defining well for Horizontal Spacing Unit.

API #		
Operator Name:	Property Name:	Well Number

KZ 06/29/2018