

**STATE OF NEW MEXICO
ENERGY, MINERALS AND NATURAL RESOURCES DEPARTMENT
OIL CONSERVATION DIVISION**

**APPLICATIONS OF DEVON ENERGY PRODUCTION COMPANY,
L.P., FOR A HORIZONTAL SPACING UNIT AND
COMPULSORY POOLING, EDDY COUNTY, NEW MEXICO**

Case Nos. 23382 & 23383

NOTICE OF FILING: UPDATED C-102s

Devon Energy Production Company, L.P., (“Devon”) through its undersigned attorneys, hereby submits for filing in the above-referenced cases Updated C-102s, attached hereto as Exhibit 1 for Case No. 23382 and Exhibit 2 for Case No. 23383. After a hearing before the Oil Conservation Division on March 2, 2023, it was determined that updated C-102s should be submitted, and Devon files said C-102s accordingly.

Respectfully submitted,

ABADIE & SCHILL, PC

/s/ Darin C. Savage

Darin C. Savage

Andrew D. Schill
William E. Zimsky
214 McKenzie Street
Santa Fe, New Mexico 87501
Telephone: 970.385.4401
Facsimile: 970.385.4901
darin@abadieschill.com
andrew@abadieschill.com
bill@abadieschill.com

**Attorneys for Devon Energy Production
Company, L.P.**

District I
1625 N. French Dr., Hobbs, NM 88240
Phone: (575) 393-6161 Fax: (575) 393-0720
District II
811 S. First St., Artesia, NM 88210
Phone: (575) 748-1283 Fax: (575) 748-9720
District III
1000 Rio Brazos Road, Aztec, NM 87410
Phone: (505) 334-6178 Fax: (505) 334-6170
District IV
1220 S. St. Francis Dr., Santa Fe, NM 87505
Phone: (505) 476-3460 Fax: (505) 476-3462

State of New Mexico
Energy, Minerals & Natural Resources Department
OIL CONSERVATION DIVISION
1220 South St. Francis Dr.
Santa Fe, NM 87505

Form C-102
Revised August 1, 2011
Submit one copy to appropriate
District Office
[] AMENDED REPORT

WELL LOCATION AND ACREAGE DEDICATION PLAT

Table with 3 columns: API Number (30-015-49351), Pool Code (96991), Pool Name (SAND DUNES;WOLFCAMP), Property Code (325761), Property Name (BORA BORA 13-24 FED COM), Well Number (623H), OGRID No. (6137), Operator Name (DEVON ENERGY PRODUCTION COMPANY, L.P.), Elevation (3499.1)

10 Surface Location

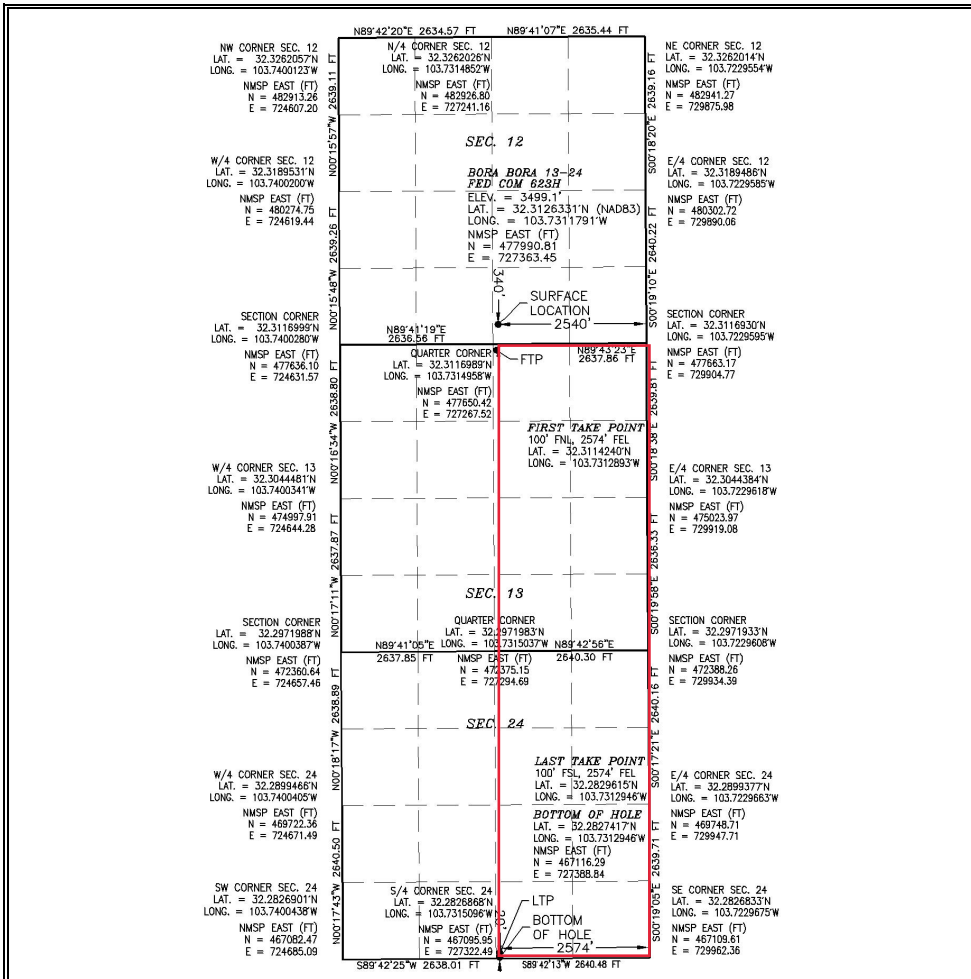
Table with 10 columns: UL or lot no. (O), Section (12), Township (23 S), Range (31 E), Lot Idn, Feet from the (340), North/South line (SOUTH), Feet from the (2540), East/West line (EAST), County (EDDY)

11 Bottom Hole Location If Different From Surface

Table with 10 columns: UL or lot no. (O), Section (24), Township (23 S), Range (31 E), Lot Idn, Feet from the (20), North/South line (SOUTH), Feet from the (2574), East/West line (EAST), County (EDDY)

Table with 4 columns: Dedicated Acres (640), Joint or Infill, Consolidation Code, Order No.

No allowable will be assigned to this completion until all interests have been consolidated or a non-standard unit has been approved by the division.



17 OPERATOR CERTIFICATION
I hereby certify that the information contained herein is true and complete to the best of my knowledge and belief...
Signature: Shayda Omoumi
Date: 3/3/2023
Printed Name: Shayda Omoumi
E-mail Address: shayda.omoumi@dvn.com
18 SURVEYOR CERTIFICATION
I hereby certify that the well location shown on this plat was plotted from field notes of actual surveys made by me or under my supervision...
Date of Survey: JANUARY 3, 2023
Signature and Seal of Professional Surveyor: [Seal and Signature]
Certificate Number: [Number]

EXHIBIT 1

District I
1625 N. French Dr., Hobbs, NM 88240
Phone: (575) 393-6161 Fax: (575) 393-0720
District II
811 S. First St., Artesia, NM 88210
Phone: (575) 748-1283 Fax: (575) 748-9720
District III
1000 Rio Brazos Road, Aztec, NM 87410
Phone: (505) 334-6178 Fax: (505) 334-6170
District IV
1220 S. St. Francis Dr., Santa Fe, NM 87505
Phone: (505) 476-3460 Fax: (505) 476-3462

State of New Mexico
Energy, Minerals & Natural Resources Department
OIL CONSERVATION DIVISION
1220 South St. Francis Dr.
Santa Fe, NM 87505

Form C-102
Revised August 1, 2011
Submit one copy to appropriate
District Office
 AMENDED REPORT

WELL LOCATION AND ACREAGE DEDICATION PLAT

¹ API Number 30-015-49354		² Pool Code 96991		³ Pool Name SAND DUNES; WOLFCAMP	
⁴ Property Code 325761		⁵ Property Name BORA BORA 13-24 FED COM			⁶ Well Number 624H
⁷ OGRID No. 6137		⁸ Operator Name DEVON ENERGY PRODUCTION COMPANY, L.P.			⁹ Elevation 3505.3

¹⁰ Surface Location

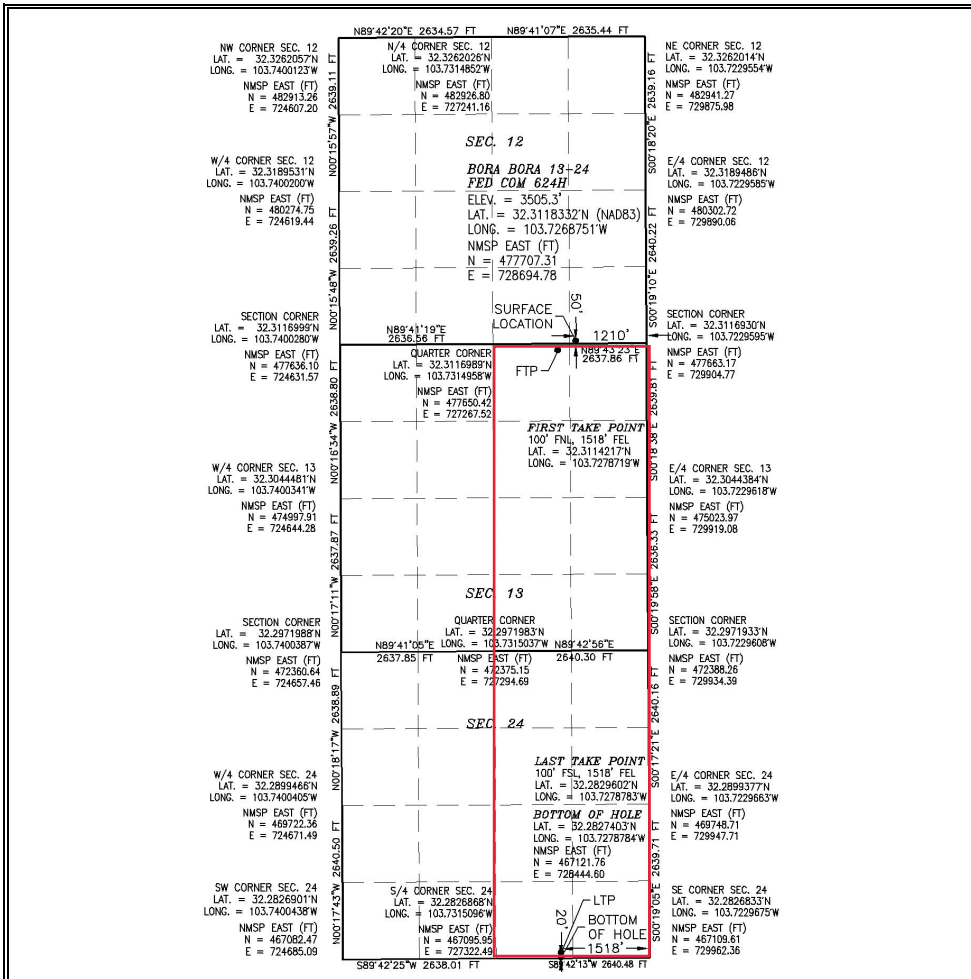
UL or lot no.	Section	Township	Range	Lot Idn	Feet from the	North/South line	Feet from the	East/West line	County
P	12	23 S	31 E		50	SOUTH	1210	EAST	EDDY

¹¹ Bottom Hole Location If Different From Surface

UL or lot no.	Section	Township	Range	Lot Idn	Feet from the	North/South line	Feet from the	East/West line	County
O	24	23 S	31 E		20	SOUTH	1518	EAST	EDDY

¹² Dedicated Acres 640	¹³ Joint or Infill	¹⁴ Consolidation Code	¹⁵ Order No.
---------------------------------------------	-------------------------------	----------------------------------	-------------------------

No allowable will be assigned to this completion until all interests have been consolidated or a non-standard unit has been approved by the division.



¹⁷ OPERATOR CERTIFICATION
I hereby certify that the information contained herein is true and complete to the best of my knowledge and belief, and that this organization either owns a working interest or unleased mineral interest in the land including the proposed bottom hole location or has a right to drill this well at this location pursuant to a contract with an owner of such a mineral or working interest, or to a voluntary pooling agreement or a compulsory pooling order heretofore entered by the division.

Jenny Harms 1-17-2023
Signature Date

JENNY HARMS
Printed Name

JENNY.HARMS@DVN.COM
E-mail Address

¹⁸ SURVEYOR CERTIFICATION
I hereby certify that the well location shown on this plat was plotted from field notes of actual surveys made by me or under my supervision, and that the same is true and correct to the best of my belief.

JANUARY 3, 2023
Date of Survey

Paul Simon F. Jaramilla
Signature and Seal of Professional Surveyor

Certificate Number: **LS 12797**
NO. 8741A

District I
1625 N. French Dr., Hobbs, NM 88240
Phone: (575) 393-6161 Fax: (575) 393-0720

District II
811 S. First St., Artesia, NM 88210
Phone: (575) 748-1283 Fax: (575) 748-9720

District III
1000 Rio Brazos Road, Aztec, NM 87410
Phone: (505) 334-6178 Fax: (505) 334-6170

District IV
1220 S. St. Francis Dr., Santa Fe, NM 87505
Phone: (505) 476-3460 Fax: (505) 476-3462

State of New Mexico
Energy, Minerals & Natural Resources Department
OIL CONSERVATION DIVISION
1220 South St. Francis Dr.
Santa Fe, NM 87505

Form C-102
Revised August 1, 2011
Submit one copy to appropriate
District Office
 AMENDED REPORT

WELL LOCATION AND ACREAGE DEDICATION PLAT

¹ API Number 30-015-49499		² Pool Code [96991]		³ Pool Name SAND DUNES; WOLFCAMP	
⁴ Property Code 325761		⁵ Property Name BORA BORA 13-24 FED COM			⁶ Well Number 625H
⁷ OGRID No. 6137		⁸ Operator Name DEVON ENERGY PRODUCTION COMPANY, L.P.			⁹ Elevation 3505.4

¹⁰ Surface Location

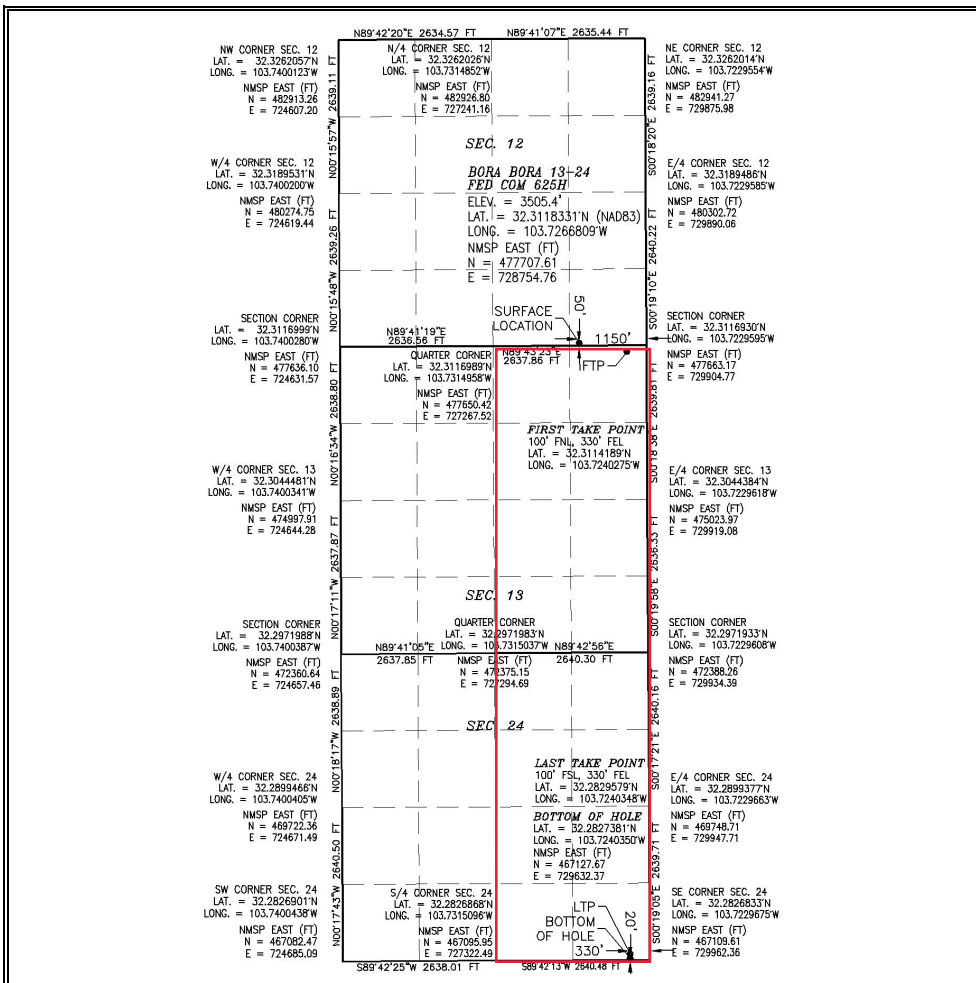
UL or lot no.	Section	Township	Range	Lot Idn	Feet from the	North/South line	Feet from the	East/West line	County
P	12	23 S	31 E		50	SOUTH	1150	EAST	EDDY

¹¹ Bottom Hole Location If Different From Surface

UL or lot no.	Section	Township	Range	Lot Idn	Feet from the	North/South line	Feet from the	East/West line	County
P	24	23 S	31 E		20	SOUTH	330	EAST	EDDY

¹² Dedicated Acres 640	¹³ Joint or Infill	¹⁴ Consolidation Code	¹⁵ Order No.
---------------------------------------------	-------------------------------	----------------------------------	-------------------------

No allowable will be assigned to this completion until all interests have been consolidated or a non-standard unit has been approved by the division.



¹⁷ OPERATOR CERTIFICATION

I hereby certify that the information contained herein is true and complete to the best of my knowledge and belief, and that this organization either owns a working interest or unleased mineral interest in the land including the proposed bottom hole location or has a right to drill this well at this location pursuant to a contract with an owner of such a mineral or working interest, or to a voluntary pooling agreement or a compulsory pooling order heretofore entered by the division.

Jenny Harms 1-17-2023
Signature Date

JENNY HARMS
Printed Name

JENNY.HARMS@DVN.COM
E-mail Address

¹⁸ SURVEYOR CERTIFICATION

I hereby certify that the well location shown on this plat was plotted from field notes of actual surveys made by me or under my supervision, and that the same is true and correct to the best of my belief.

JANUARY 3, 2023
Date of Survey

Paul Simon F. Jaramilla
Signature and Seal of Professional Surveyor

Certificate Number: **LS 12797**
Professional Surveyor No. 8740A

District I
1625 N. French Dr., Hobbs, NM 88240
Phone: (575) 393-6161 Fax: (575) 393-0720
District II
811 S. First St., Artesia, NM 88210
Phone: (575) 748-1283 Fax: (575) 748-9720
District III
1000 Rio Brazos Road, Aztec, NM 87410
Phone: (505) 334-6178 Fax: (505) 334-6170
District IV
1220 S. St. Francis Dr., Santa Fe, NM 87505
Phone: (505) 476-3460 Fax: (505) 476-3462

State of New Mexico
Energy, Minerals & Natural Resources Department
OIL CONSERVATION DIVISION
1220 South St. Francis Dr.
Santa Fe, NM 87505

Form C-102
Revised August 1, 2011
Submit one copy to appropriate
District Office
 AMENDED REPORT

WELL LOCATION AND ACREAGE DEDICATION PLAT

¹ API Number 30-015-49352		² Pool Code 96991		³ Pool Name SAND DUNES;WOLFCAMP	
⁴ Property Code 325761		⁵ Property Name BORA BORA 13-24 FED COM			⁶ Well Number 713H
⁷ OGRID No. 6137		⁸ Operator Name DEVON ENERGY PRODUCTION COMPANY, L.P.			⁹ Elevation 3499.4

¹⁰ Surface Location

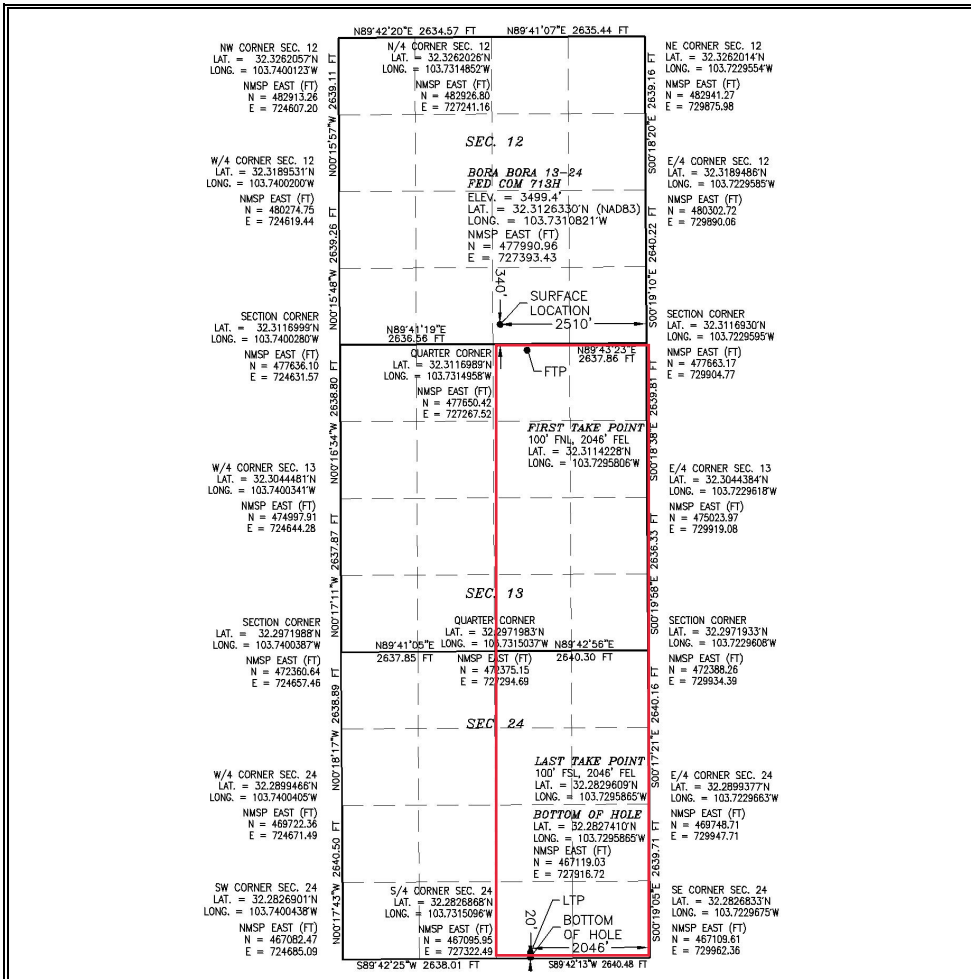
UL or lot no.	Section	Township	Range	Lot Idn	Feet from the	North/South line	Feet from the	East/West line	County
O	12	23 S	31 E		340	SOUTH	2510	EAST	EDDY

¹¹ Bottom Hole Location If Different From Surface

UL or lot no.	Section	Township	Range	Lot Idn	Feet from the	North/South line	Feet from the	East/West line	County
O	24	23 S	31 E		20	SOUTH	2046	EAST	EDDY

¹² Dedicated Acres 640	¹³ Joint or Infill	¹⁴ Consolidation Code	¹⁵ Order No.
--------------------------------------	-------------------------------	----------------------------------	-------------------------

No allowable will be assigned to this completion until all interests have been consolidated or a non-standard unit has been approved by the division.



¹⁷ OPERATOR CERTIFICATION
I hereby certify that the information contained herein is true and complete to the best of my knowledge and belief, and that this organization either owns a working interest or unleased mineral interest in the land including the proposed bottom hole location or has a right to drill this well at this location pursuant to a contract with an owner of such a mineral or working interest, or to a voluntary pooling agreement or a compulsory pooling order heretofore entered by the division.

Signature: *Shayda Omoumi* Date: 3/3/2023
Printed Name: Shayda Omoumi
E-mail Address: shayda.omoumi@dvn.com

¹⁸ SURVEYOR CERTIFICATION
I hereby certify that the well location shown on this plat was plotted from field notes of actual surveys made by me or under my supervision, and that the same is true and correct to the best of my belief.

JANUARY 3, 2023
Date of Survey

Signature and Seal of Professional Surveyor: *Michael F. Jaramillo*
Certificate Number: 12797
Professional Surveyor No. 8745A

District I
1625 N. French Dr., Hobbs, NM 88240
Phone: (575) 393-6161 Fax: (575) 393-0720
District II
811 S. First St., Artesia, NM 88210
Phone: (575) 748-1283 Fax: (575) 748-9720
District III
1000 Rio Brazos Road, Aztec, NM 87410
Phone: (505) 334-6178 Fax: (505) 334-6170
District IV
1220 S. St. Francis Dr., Santa Fe, NM 87505
Phone: (505) 476-3460 Fax: (505) 476-3462

State of New Mexico
Energy, Minerals & Natural Resources Department
OIL CONSERVATION DIVISION
1220 South St. Francis Dr.
Santa Fe, NM 87505

Form C-102
Revised August 1, 2011
Submit one copy to appropriate
District Office
[] AMENDED REPORT

WELL LOCATION AND ACREAGE DEDICATION PLAT

Table with 3 columns: API Number (30-015-49355), Pool Code (96991), Pool Name (SAND DUNES; WOLFCAMP), Property Code (325761), Property Name (BORA BORA 13-24 FED COM), Well Number (714H), OGRID No. (6137), Operator Name (DEVON ENERGY PRODUCTION COMPANY, L.P.), Elevation (3505.4)

Surface Location

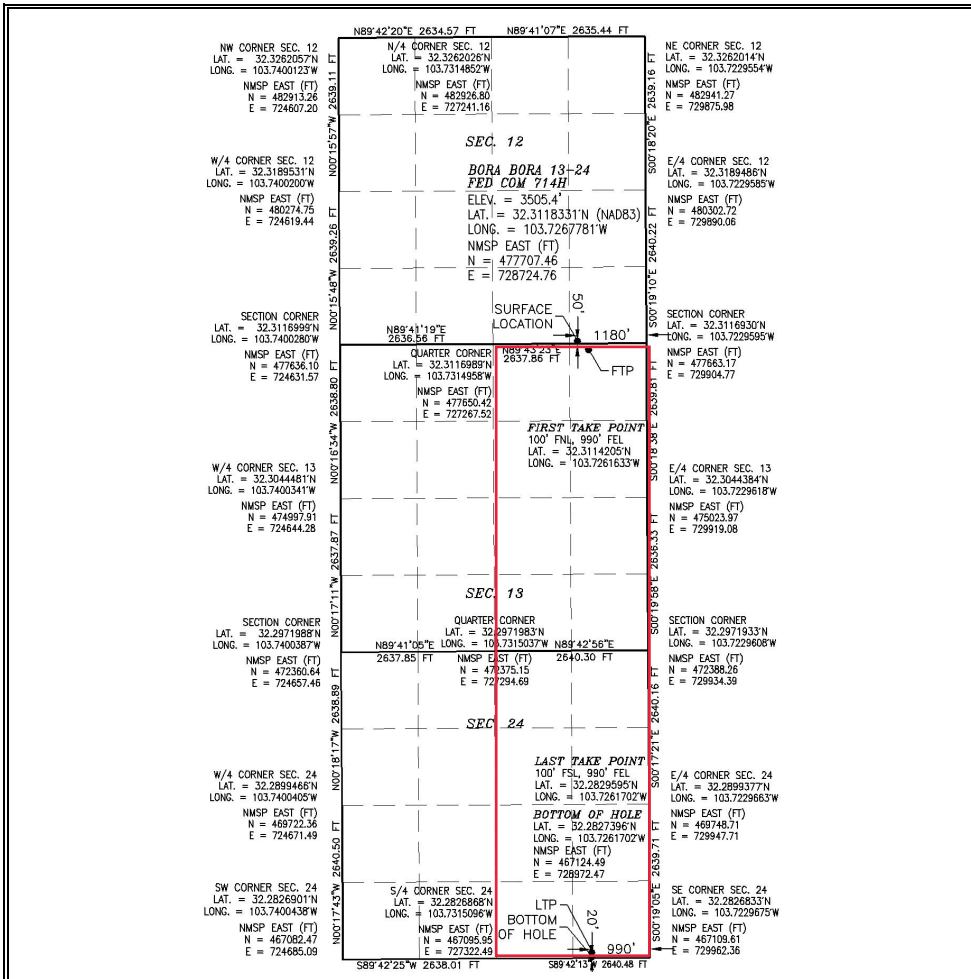
Table with 10 columns: UL or lot no. (P), Section (12), Township (23 S), Range (31 E), Lot Idn, Feet from the (50), North/South line (SOUTH), Feet from the (1180), East/West line (EAST), County (EDDY)

Bottom Hole Location If Different from Surface

Table with 10 columns: UL or lot no. (P), Section (24), Township (23 S), Range (31 E), Lot Idn, Feet from the (20), North/South line (SOUTH), Feet from the (990), East/West line (EAST), County (EDDY)

Table with 4 columns: Dedicated Acres (640), Joint or Infill, Consolidation Code, Order No.

No allowable will be assigned to this completion until all interests have been consolidated or a non-standard unit has been approved by the division.



Operator Certification section. Includes signature of Shayda Omoumi, date 3/3/2023, printed name, and email address shayda.omoumi@dvn.com.

Surveyor Certification section. Includes signature and seal of professional surveyor, date of survey (JANUARY 3, 2023), and certificate number.

District I
1625 N. French Dr., Hobbs, NM 88240
Phone: (575) 393-6161 Fax: (575) 393-0720

District II
811 S. First St., Artesia, NM 88210
Phone: (575) 748-1283 Fax: (575) 748-9720

District III
1000 Rio Brazos Road, Aztec, NM 87410
Phone: (505) 334-6178 Fax: (505) 334-6170

District IV
1220 S. St. Francis Dr., Santa Fe, NM 87505
Phone: (505) 476-3460 Fax: (505) 476-3462

State of New Mexico
Energy, Minerals & Natural Resources Department
OIL CONSERVATION DIVISION
1220 South St. Francis Dr.
Santa Fe, NM 87505

Form C-102
Revised August 1, 2011
Submit one copy to appropriate
District Office
 AMENDED REPORT

WELL LOCATION AND ACREAGE DEDICATION PLAT

¹ API Number 30-015-53182	² Pool Code 96991	³ Pool Name Sand Dunes; Wolfcamp
⁴ Property Code 325761	⁵ Property Name BORA BORA 13-24 FED COM	
⁷ OGRID No. 6137	⁸ Operator Name DEVON ENERGY PRODUCTION COMPANY, L.P.	⁶ Well Number 621H
		⁹ Elevation 3497.1

¹⁰ Surface Location

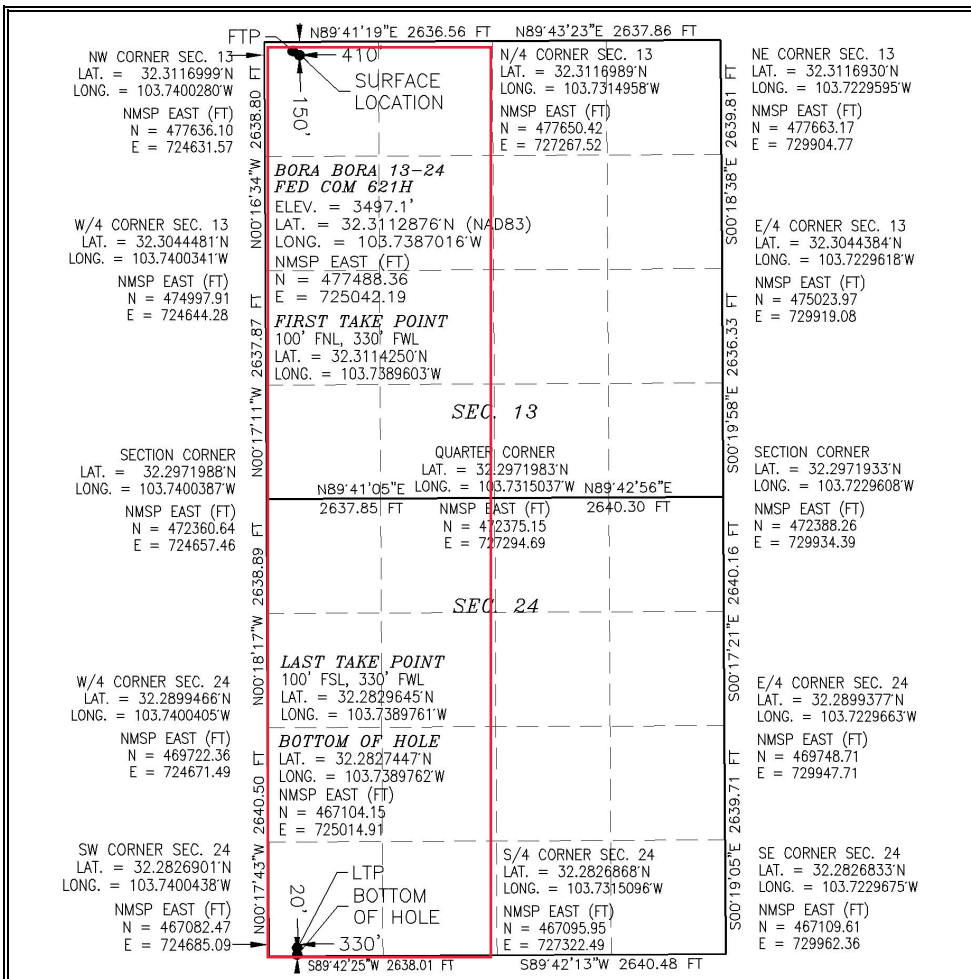
UL or lot no.	Section	Township	Range	Lot Idn	Feet from the	North/South line	Feet from the	East/West line	County
D	13	23 S	31 E		150	NORTH	410	WEST	EDDY

¹¹ Bottom Hole Location If Different From Surface

UL or lot no.	Section	Township	Range	Lot Idn	Feet from the	North/South line	Feet from the	East/West line	County
M	24	23 S	31 E		20	SOUTH	330	WEST	EDDY

¹² Dedicated Acres 640	¹³ Joint or Infill	¹⁴ Consolidation Code	¹⁵ Order No.
---------------------------------------------	-------------------------------	----------------------------------	-------------------------

No allowable will be assigned to this completion until all interests have been consolidated or a non-standard unit has been approved by the division.



¹⁷ OPERATOR CERTIFICATION

I hereby certify that the information contained herein is true and complete to the best of my knowledge and belief, and that this organization either owns a working interest or unleased mineral interest in the land including the proposed bottom hole location or has a right to drill this well at this location pursuant to a contract with an owner of such a mineral or working interest, or to a voluntary pooling agreement or a compulsory pooling order heretofore entered by the division.

Shayda Omoumi 3/3/2023
Signature Date

Shayda Omoumi
Printed Name

shayda.omoumi@dvn.com
E-mail Address

¹⁸ SURVEYOR CERTIFICATION

I hereby certify that the well location shown on this plat was plotted from field notes of actual surveys made by me or under my supervision, and that the same is true and correct to the best of my belief.

DECEMBER 18, 2020
Date of Survey

Michael F. Jaramillo
Signature and Seal of Professional Surveyor

Certificate Number: **LS 12797**
Professional Surveyor No. 8735

EXHIBIT 2

District I
1625 N. French Dr., Hobbs, NM 88240
Phone: (575) 393-6161 Fax: (575) 393-0720

District II
811 S. First St., Artesia, NM 88210
Phone: (575) 748-1283 Fax: (575) 748-9720

District III
1000 Rio Brazos Road, Aztec, NM 87410
Phone: (505) 334-6178 Fax: (505) 334-6170

District IV
1220 S. St. Francis Dr., Santa Fe, NM 87505
Phone: (505) 476-3460 Fax: (505) 476-3462

State of New Mexico
Energy, Minerals & Natural Resources Department
OIL CONSERVATION DIVISION
1220 South St. Francis Dr.
Santa Fe, NM 87505

Form C-102
Revised August 1, 2011
Submit one copy to appropriate
District Office

AMENDED REPORT

WELL LOCATION AND ACREAGE DEDICATION PLAT

¹ API Number 30-015-49501		² Pool Code 96991		³ Pool Name SAND DUNES;WOLFCAMP	
⁴ Property Code 325761		⁵ Property Name BORA BORA 13-24 FED COM			⁶ Well Number 622H
⁷ OGRID No. 6137		⁸ Operator Name DEVON ENERGY PRODUCTION COMPANY, L.P.			⁹ Elevation 3491.1

¹⁰ Surface Location

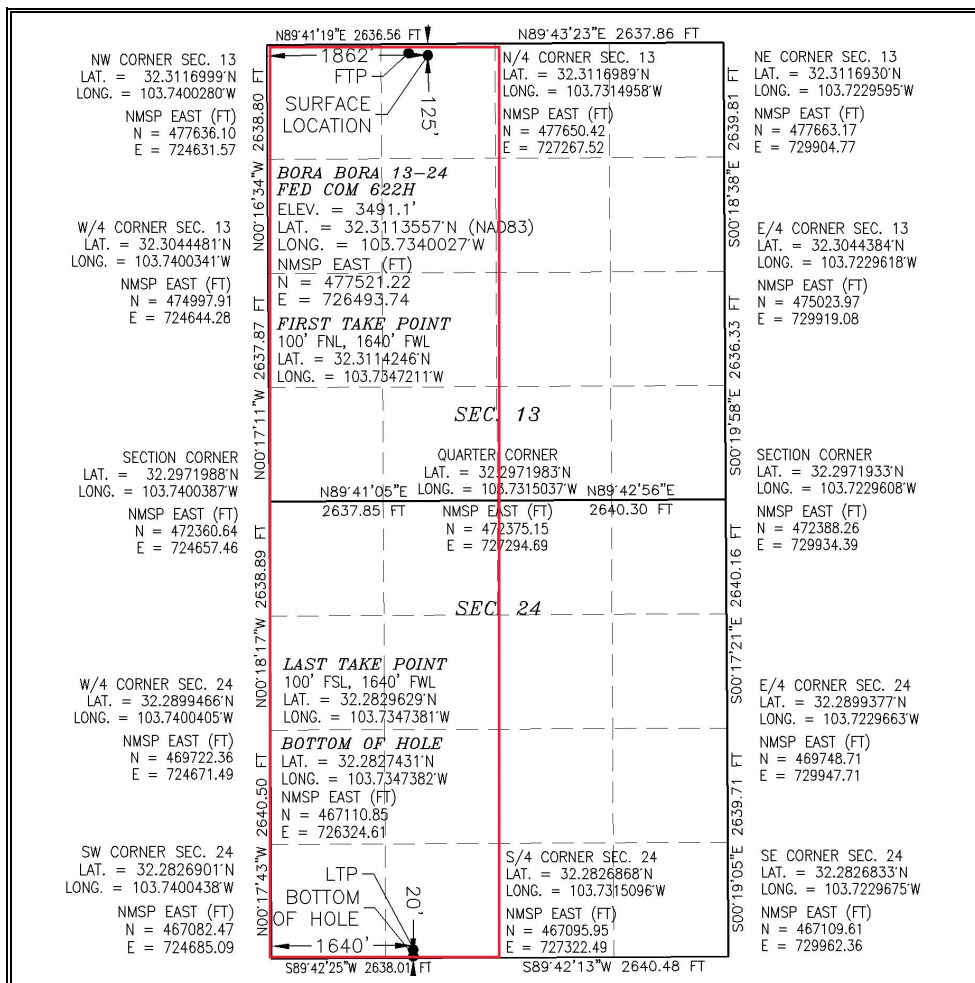
UL or lot no.	Section	Township	Range	Lot Idn	Feet from the	North/South line	Feet from the	East/West line	County
C	13	23 S	31 E		125	NORTH	1862	WEST	EDDY

¹¹ Bottom Hole Location If Different From Surface

UL or lot no.	Section	Township	Range	Lot Idn	Feet from the	North/South line	Feet from the	East/West line	County
N	24	23 S	31 E		20	SOUTH	1640	WEST	EDDY

¹² Dedicated Acres 640	¹³ Joint or Infill	¹⁴ Consolidation Code	¹⁵ Order No.
---------------------------------------------	-------------------------------	----------------------------------	-------------------------

No allowable will be assigned to this completion until all interests have been consolidated or a non-standard unit has been approved by the division.



17 OPERATOR CERTIFICATION

I hereby certify that the information contained herein is true and complete to the best of my knowledge and belief, and that this organization either owns a working interest or unleased mineral interest in the land including the proposed bottom hole location or has a right to drill this well at this location pursuant to a contract with an owner of such a mineral or working interest, or to a voluntary pooling agreement or a compulsory pooling order heretofore entered by the division.

Shayda Omoumi 3/3/2023
Signature Date

Shayda Omoumi
Printed Name

shayda.omoumi@dvn.com
E-mail Address

18 SURVEYOR CERTIFICATION

I hereby certify that the well location shown on this plat was plotted from field notes of actual surveys made by me or under my supervision, and that the same is true and correct to the best of my belief.

JANUARY 3, 2023
Date of Survey

[Signature]
Signature and Seal of Professional Surveyor

Certificate Number: **LS 12797**

SEAL OF THE PROFESSIONAL SURVEYORS OF THE STATE OF NEW MEXICO
NO. 8738A

District I
1625 N. French Dr., Hobbs, NM 88240
Phone: (575) 393-6161 Fax: (575) 393-0720
District II
811 S. First St., Artesia, NM 88210
Phone: (575) 748-1283 Fax: (575) 748-9720
District III
1000 Rio Brazos Road, Aztec, NM 87410
Phone: (505) 334-6178 Fax: (505) 334-6170
District IV
1220 S. St. Francis Dr., Santa Fe, NM 87505
Phone: (505) 476-3460 Fax: (505) 476-3462

State of New Mexico
Energy, Minerals & Natural Resources Department
OIL CONSERVATION DIVISION
1220 South St. Francis Dr.
Santa Fe, NM 87505

Form C-102
Revised August 1, 2011
Submit one copy to appropriate
District Office
AMENDED REPORT

WELL LOCATION AND ACREAGE DEDICATION PLAT

Table with 3 columns: API Number (30-015-49497), Pool Code (96991), Pool Name (SAND DUNES;WOLFCAMP), Property Code (325761), Property Name (BORA BORA 13-24 FED COM), Well Number (711H), OGRID No. (6137), Operator Name (DEVON ENERGY PRODUCTION COMPANY, L.P.), Elevation (3497.1)

Surface Location

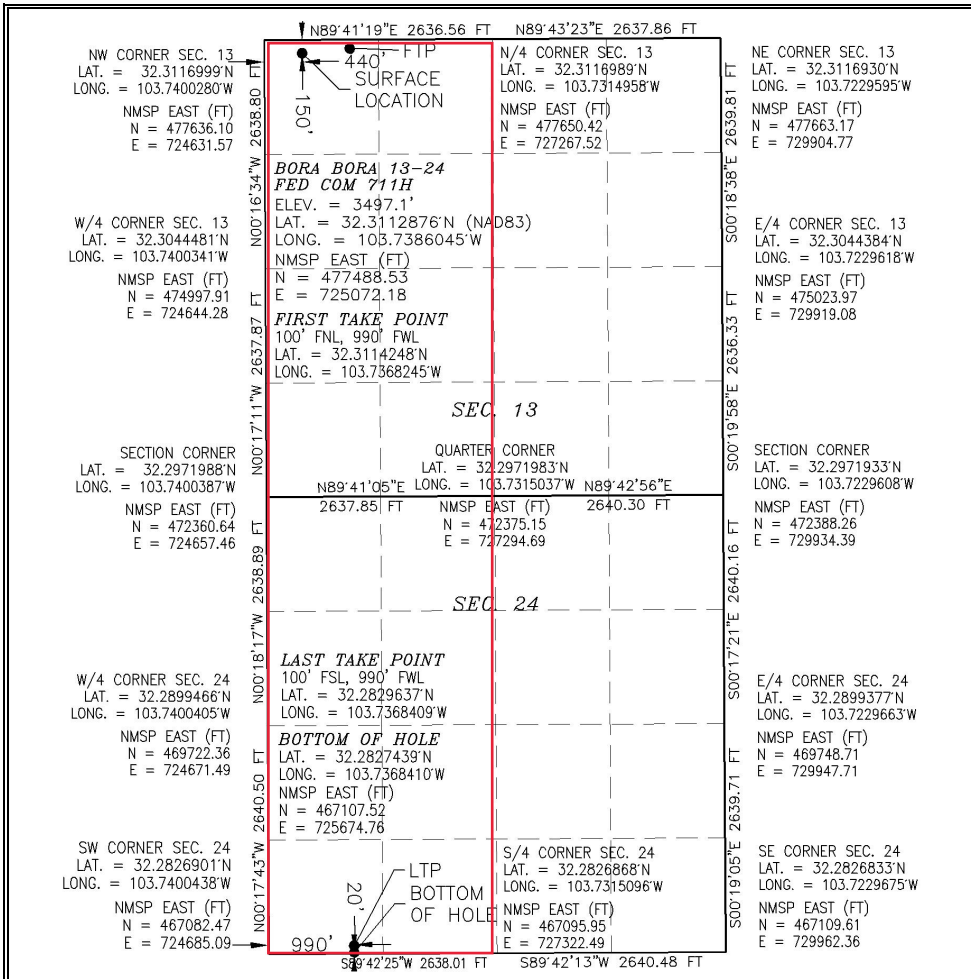
Table with 10 columns: UL or lot no. (D), Section (13), Township (23 S), Range (31 E), Lot Idn, Feet from the (150), North/South line (NORTH), Feet from the (440), East/West line (WEST), County (EDDY)

Bottom Hole Location If Different From Surface

Table with 10 columns: UL or lot no. (M), Section (24), Township (23 S), Range (31 E), Lot Idn, Feet from the (20), North/South line (SOUTH), Feet from the (990), East/West line (WEST), County (EDDY)

Table with 4 columns: Dedicated Acres (640), Joint or Infill, Consolidation Code, Order No.

No allowable will be assigned to this completion until all interests have been consolidated or a non-standard unit has been approved by the division.



OPERATOR CERTIFICATION
I hereby certify that the information contained herein is true and complete to the best of my knowledge and belief...
Signature: Shayda Omoumi
Date: 3/3/2023
Printed Name: Shayda Omoumi
E-mail Address: shayda.omoumi@dvn.com

SURVEYOR CERTIFICATION
I hereby certify that the well location shown on this plat was plotted from field notes of actual surveys made by me or under my supervision...
Date of Survey: JANUARY 3, 2023
Signature and Seal of Professional Surveyor: [Seal and Signature]
Certificate Number: 12797

District I
1625 N. French Dr., Hobbs, NM 88240
Phone: (575) 393-6161 Fax: (575) 393-0720

District II
811 S. First St., Artesia, NM 88210
Phone: (575) 748-1283 Fax: (575) 748-9720

District III
1000 Rio Brazos Road, Aztec, NM 87410
Phone: (505) 334-6178 Fax: (505) 334-6170

District IV
1220 S. St. Francis Dr., Santa Fe, NM 87505
Phone: (505) 476-3460 Fax: (505) 476-3462

State of New Mexico
Energy, Minerals & Natural Resources Department
OIL CONSERVATION DIVISION
1220 South St. Francis Dr.
Santa Fe, NM 87505

Form C-102
Revised August 1, 2011
Submit one copy to appropriate
District Office

AMENDED REPORT

WELL LOCATION AND ACREAGE DEDICATION PLAT

¹ API Number 30-015-49502	² Pool Code 96991	³ Pool Name SAND DUNES; WOLFCAMP
⁴ Property Code 325761	⁵ Property Name BORA BORA 13-24 FED COM	
⁷ OGRID No. 6137	⁸ Operator Name DEVON ENERGY PRODUCTION COMPANY, L.P.	⁶ Well Number 712H
		⁹ Elevation 3491.2

¹⁰ Surface Location

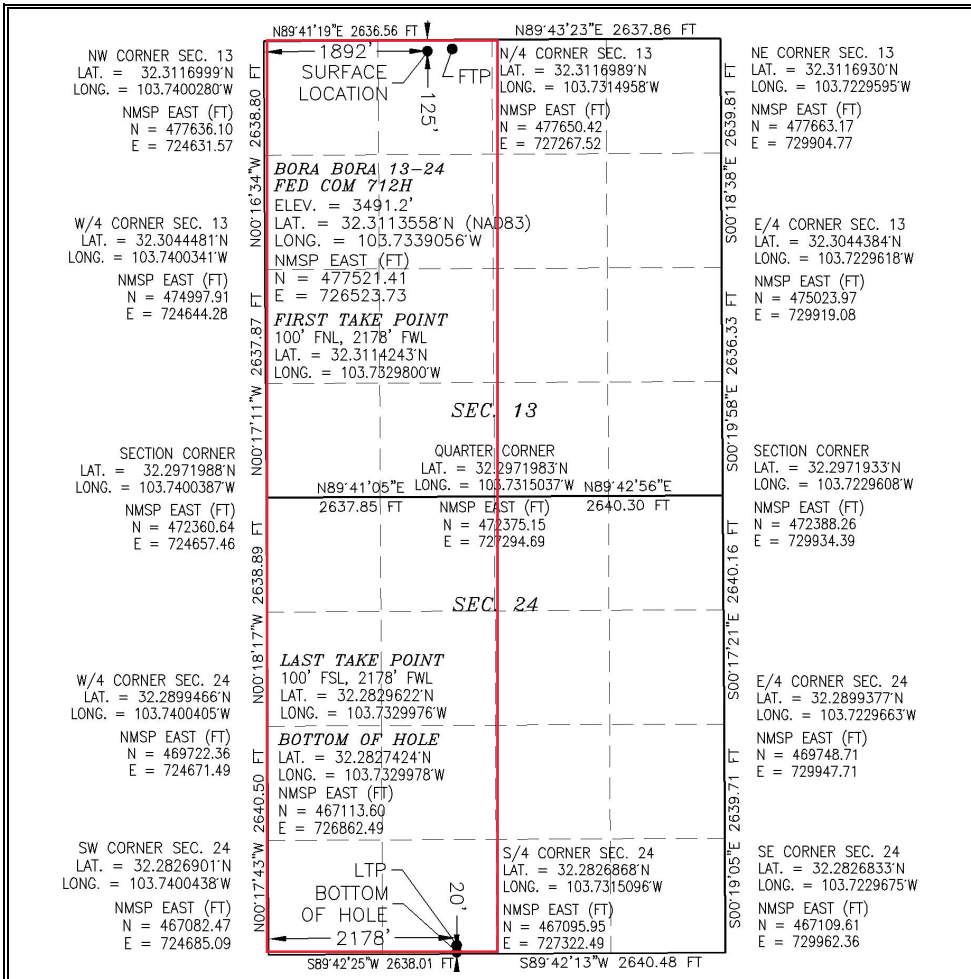
UL or lot no.	Section	Township	Range	Lot Idn	Feet from the	North/South line	Feet from the	East/West line	County
C	13	23 S	31 E		125	NORTH	1892	WEST	EDDY

¹¹ Bottom Hole Location If Different From Surface

UL or lot no.	Section	Township	Range	Lot Idn	Feet from the	North/South line	Feet from the	East/West line	County
N	24	23 S	31 E		20	SOUTH	2178	WEST	EDDY

¹² Dedicated Acres 640	¹³ Joint or Infill	¹⁴ Consolidation Code	¹⁵ Order No.
---------------------------------------------	-------------------------------	----------------------------------	-------------------------

No allowable will be assigned to this completion until all interests have been consolidated or a non-standard unit has been approved by the division.



¹⁷ OPERATOR CERTIFICATION

I hereby certify that the information contained herein is true and complete to the best of my knowledge and belief, and that this organization either owns a working interest or unleased mineral interest in the land including the proposed bottom hole location or has a right to drill this well at this location pursuant to a contract with an owner of such a mineral or working interest, or to a voluntary pooling agreement or a compulsory pooling order heretofore entered by the division.

Shayda Omoumi 3/3/2023
Signature Date

Shayda Omoumi
Printed Name

shayda.omoumi@dvn.com
E-mail Address

¹⁸ SURVEYOR CERTIFICATION

I hereby certify that the well location shown on this plat was plotted from field notes of actual surveys made by me or under my supervision, and that the same is true and correct to the best of my belief.

JANUARY 3, 2023
Date of Survey

[Signature]
Signature and Seal of Professional Surveyor

Certificate Number: **LS 12797**

SEAL OF THE PROFESSIONAL SURVEYORS OF THE STATE OF NEW MEXICO
NO. 8739A