

Office
District I - (575) 393-6161
1625 N. French Dr., Hobbs, NM 88240
District II - (575) 748-1283
811 S. First St., Artesia, NM 88210
District III - (505) 334-6178
1000 Rio Brazos Rd., Aztec, NM 87410
District IV - (505) 476-3460
1220 S. St. Francis Dr., Santa Fe, NM 87505

State of New Mexico
Energy, Minerals and Natural Resources

Form C-103
Revised July 18, 2013

OIL CONSERVATION DIVISION
1220 South St. Francis Dr.
Santa Fe, NM 87505

WELL API NO. 30-015-50181
MULTIPLE (SEE LIST)
5. Indicate Type of Lease
STATE [] FEE []
6. State Oil & Gas Lease No.
7. Lease Name or Unit Agreement Name
MACALLAN 12 1 FED ST COM 23
CICADA UNIT
8. Well Number 1H
MULTIPLE (SEE LIST)
9. OGRID Number
4323
10. Pool name or Wildcat WELCH;BONE SPRING
DELAWARE RIVER;BONE SPRING

SUNDRY NOTICES AND REPORTS ON WELLS
(DO NOT USE THIS FORM FOR PROPOSALS TO DRILL OR TO DEEPEN OR PLUG BACK TO A DIFFERENT RESERVOIR. USE "APPLICATION FOR PERMIT" (FORM C-101) FOR SUCH PROPOSALS.)
1. Type of Well: Oil Well [x] Gas Well [] Other []
2. Name of Operator
CHEVRON USA, INC.
3. Address of Operator
6301 DEAUVILLE BLVD, MIDLAND, TEXAS 79706
4. Well Location
Unit Letter D : 170 feet from the NORTH line and 1152 feet from the WEST line
Section 13 Township 26S Range 27E NMPM County EDDY
11. Elevation (Show whether DR, RKB, RT, GR, etc.)
3181'

12. Check Appropriate Box to Indicate Nature of Notice, Report or Other Data

NOTICE OF INTENTION TO:
PERFORM REMEDIAL WORK [] PLUG AND ABANDON []
TEMPORARILY ABANDON [] CHANGE PLANS []
PULL OR ALTER CASING [] MULTIPLE COMPL []
DOWNHOLE COMMINGLE []
CLOSED-LOOP SYSTEM []
OTHER:
CICADA UNIT EXPANSION [x]

SUBSEQUENT REPORT OF:
REMEDIAL WORK [] ALTERING CASING []
COMMENCE DRILLING OPNS. [] P AND A []
CASING/CEMENT JOB []
OTHER: []

13. Describe proposed or completed operations. (Clearly state all pertinent details, and give pertinent dates, including estimated date of starting any proposed work). SEE RULE 19.15.7.14 NMAC. For Multiple Completions: Attach wellbore diagram of proposed completion or recompletion.

CHEVRON USA, INC. REQUESTS THE EXPANSION OF THE CICADA UNIT TO ADD THE FOLLOWING WELLS:

Chevron will allocate production of these wells via well test method as outlined in Cicada Unit Order No. is R-22488 Case No. 22873

Table with 4 columns: Well ID, Location, Unit Name, and HNM ID. Rows include Bone Spring wells like MACALLAN 12 1 FED ST COM 23 1H and SMOKE WAGON 3 10 FED COM 28 1H.

Spud Date: []

Rig Release Date: []

I hereby certify that the information above is true and complete to the best of my knowledge and belief.

SIGNATURE Carol Adler TITLE Sr. HSE Regulatory Affairs Coordinator DATE 6/13/2023

Type or print name Carol Adler E-mail address: caroladler@chevron.com PHONE: (432) 687-7148

For State Use Only

APPROVED BY: Dean R McClure TITLE Petroleum Engineer DATE 06/13/2023

Conditions of Approval (if any):

District I
1625 N. French Dr., Hobbs, NM 88240
Phone: (575) 393-6161 Fax: (575) 393-0720
District II
811 S. First St., Artesia, NM 88210
Phone: (575) 748-1283 Fax: (575) 748-9720
District III
1000 Rio Brazos Road, Aztec, NM 87410
Phone: (505) 334-6178 Fax: (505) 334-6170
District IV
1220 S. St. Francis Dr., Santa Fe, NM 87505
Phone: (505) 476-3460 Fax: (505) 476-3462

State of New Mexico
Energy, Minerals & Natural Resources Department
OIL CONSERVATION DIVISION
1220 South St. Francis Dr.
Santa Fe, NM 87505

Form C-102
Revised August 1, 2011
Submit one copy to appropriate
District Office
 AMENDED REPORT

WELL LOCATION AND ACREAGE DEDICATION PLAT

| | | |
|--|--|---|
| ¹ API Number 30-015-53393 | ² Pool Code 16800 | ³ Pool Name DELAWARE RIVER: BONE SPRING |
| ⁴ Property Code 333784 | ⁵ Property Name BUFFALO TRACE 11 14 FED 31 | |
| ⁷ OGRID No. 4323 | ⁸ Operator Name CHEVRON U.S.A. INC. | |
| | | ⁶ Well Number 1H |
| | | ⁹ Elevation 3190' |

¹⁰ Surface Location

| UL or lot no. | Section | Township | Range | Lot Idn | Feet from the | North/South line | Feet from the | East/West line | County |
|---------------|---------|----------|-------------------|---------|---------------|------------------|---------------|----------------|--------|
| A | 11 | 26 SOUTH | 27 EAST, N.M.P.M. | | 415' | NORTH | 529' | EAST | EDDY |

¹¹ Bottom Hole Location If Different From Surface

| UL or lot no. | Section | Township | Range | Lot Idn | Feet from the | North/South line | Feet from the | East/West line | County |
|---------------|---------|----------|-------------------|---------|---------------|------------------|---------------|----------------|--------|
| O | 14 | 26 SOUTH | 27 EAST, N.M.P.M. | | 25' | SOUTH | 1585' | EAST | EDDY |

| | | | |
|--------------------------------------|---|----------------------------------|-------------------------|
| ¹² Dedicated Acres 640 | ¹³ Joint or Infill DEFINING | ¹⁴ Consolidation Code | ¹⁵ Order No. |
|--------------------------------------|---|----------------------------------|-------------------------|

No allowable will be assigned to this completion until all interests have been consolidated or a non-standard unit has been approved by the division.

¹⁶

| | |
|---------------------------------------|----------|
| BUFFALO TRACE 11 14 FED 31 1H WELL | |
| X= 555.627' | NAD 27 |
| Y= 386.694' | |
| LAT. 32.063010° N | |
| LONG. 104.153765° W | |
| X= 596.811' | NAD83/86 |
| Y= 386.751' | |
| LAT. 32.063132° N | |
| LONG. 104.154256° W | |
| ELEV. +3190' | NAVD88 |

| | |
|---------------------------|----------|
| PROPOSED FIRST TAKE POINT | |
| X= 554.566' | NAD 27 |
| Y= 386.972' | |
| LAT. 32.063780° N | |
| LONG. 104.157189° W | |
| X= 595.750' | NAD83/86 |
| Y= 387.029' | |
| LAT. 32.063902° N | |
| LONG. 104.157681° W | |

| | |
|-----------------------------------|--|
| CORNER COORDINATES TABLE (NAD 27) | |
| A-Y=387033.94,X=553461.53 | |
| B-Y=387080.61,X=554804.96 | |
| C-Y=387127.27,X=556148.39 | |
| D-Y=381735.24,X=553594.56 | |
| E-Y=381772.89,X=554920.02 | |
| F-Y=381810.53,X=556245.48 | |
| G-Y=376437.81,X=553596.72 | |
| H-Y=376465.00,X=554924.20 | |
| I-Y=376492.19,X=556251.68 | |

| | |
|---------------------|----------|
| PROPOSED MID POINT | |
| X= 554.661' | NAD 27 |
| Y= 381.766' | |
| LAT. 32.049466° N | |
| LONG. 104.156911° W | |
| X= 595.845' | NAD83/86 |
| Y= 381.823' | |
| LAT. 32.049588° N | |
| LONG. 104.157402° W | |

| | |
|--------------------------|----------|
| PROPOSED LAST TAKE POINT | |
| X= 554.667' | NAD 27 |
| Y= 376.560' | |
| LAT. 32.035155° N | |
| LONG. 104.156919° W | |
| X= 595.851' | NAD83/86 |
| Y= 376.617' | |
| LAT. 32.035277° N | |
| LONG. 104.157410° W | |

| | |
|-------------------------------|----------|
| PROPOSED BOTTOM HOLE LOCATION | |
| X= 554.667' | NAD 27 |
| Y= 376.485' | |
| LAT. 32.034948° N | |
| LONG. 104.156919° W | |
| X= 595.851' | NAD83/86 |
| Y= 376.542' | |
| LAT. 32.035071° N | |
| LONG. 104.157410° W | |

Proposed First Take Point
100' FNL, 1585' FEL

Sec. 11

Proposed Mid Point
1585' FEL

Sec. 14

Proposed Last Take Point
100' FSL, 1585' FEL

¹⁷ **OPERATOR CERTIFICATION**

I hereby certify that the information contained herein is true and complete to the best of my knowledge and belief, and that this organization either owns a working interest or unleased mineral interest in the land including the proposed bottom hole location or has a right to drill this well at this location pursuant to a contract with an owner of such a mineral or working interest, or to a voluntary pooling agreement or a compulsory pooling order heretofore entered by the division.

Carol Adler 5/26/2023
Signature Date

CAROL ADLER
Printed Name

caroladler@chevron.com
E-mail Address

¹⁸ **SURVEYOR CERTIFICATION**

I hereby certify that the well location shown on this plat was plotted from field notes of actual surveys made by me or under my supervision, and that the same is true and correct to the best of my belief.

Date of Survey
Signature and Seal of Professional Surveyor:
10/06/2021

23006
Certificate Number

District I
1625 N. French Dr., Hobbs, NM 88240
Phone: (575) 393-6161 Fax: (575) 393-0720

District II
811 S. First St., Artesia, NM 88210
Phone: (575) 748-1283 Fax: (575) 748-9720

District III
1000 Rio Brazos Road, Aztec, NM 87410
Phone: (505) 334-6178 Fax: (505) 334-6170

District IV
1220 S. St. Francis Dr., Santa Fe, NM 87505
Phone: (505) 476-3460 Fax: (505) 476-3462

State of New Mexico
Energy, Minerals & Natural Resources Department
OIL CONSERVATION DIVISION
1220 South St. Francis Dr.
Santa Fe, NM 87505

Form C-102
Revised August 1, 2011
Submit one copy to appropriate
District Office

AMENDED REPORT

WELL LOCATION AND ACREAGE DEDICATION PLAT

| | | |
|--|--|---|
| ¹ API Number 30-015-53599 | ² Pool Code 16800 | ³ Pool Name DELAWARE RIVER: BONE SPRING |
| ⁴ Property Code 333784 | ⁵ Property Name BUFFALO TRACE 11 14 FED 31 | |
| ⁷ OGRID No. 4323 | ⁸ Operator Name CHEVRON U.S.A. INC. | |
| | | ⁶ Well Number 2H |
| | | ⁹ Elevation 3190' |

¹⁰ Surface Location

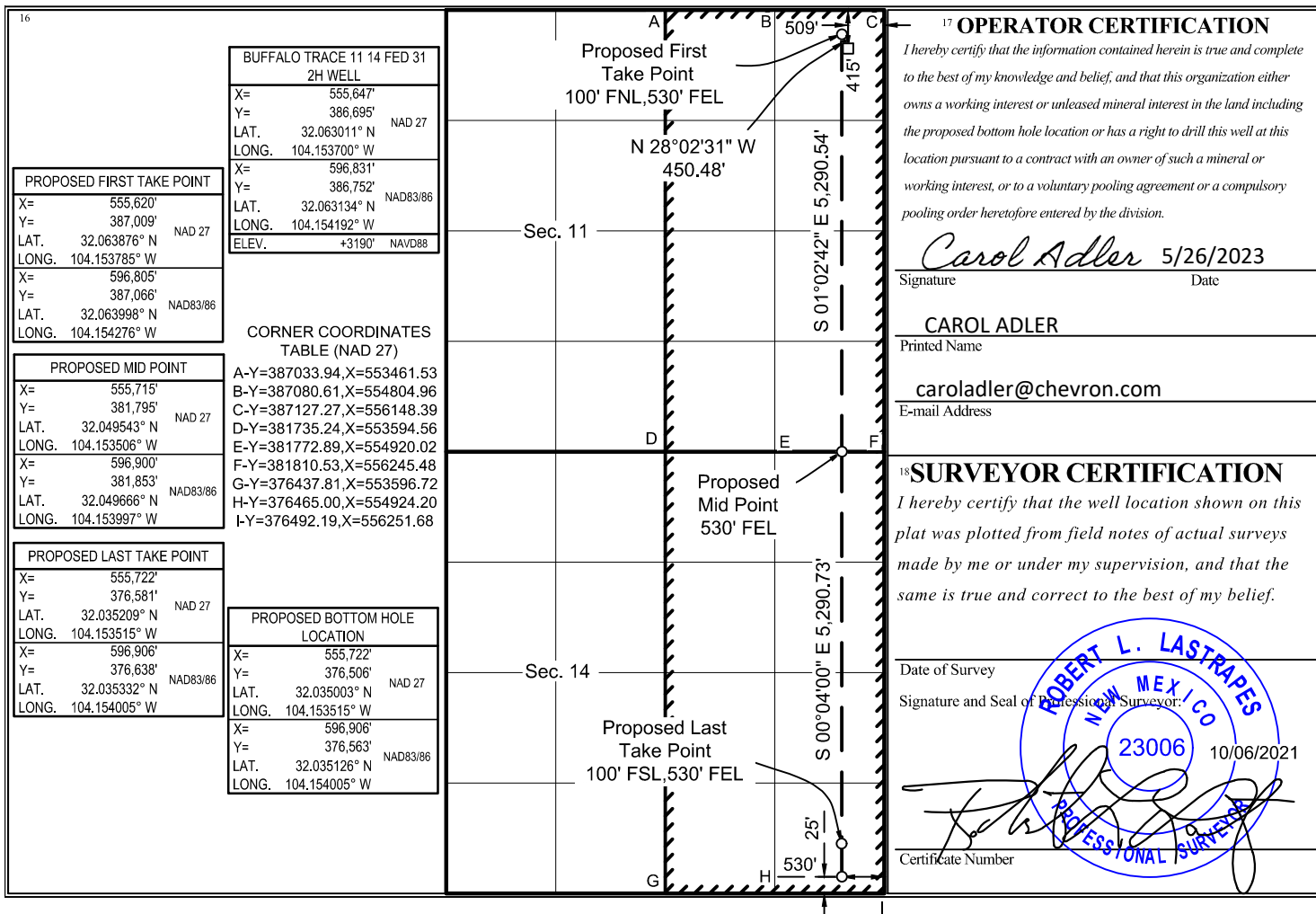
| UL or lot no. | Section | Township | Range | Lot Idn | Feet from the | North/South line | Feet from the | East/West line | County |
|---------------|---------|----------|-------------------|---------|---------------|------------------|---------------|----------------|--------|
| A | 11 | 26 SOUTH | 27 EAST, N.M.P.M. | | 415' | NORTH | 509' | EAST | EDDY |

¹¹ Bottom Hole Location If Different From Surface

| UL or lot no. | Section | Township | Range | Lot Idn | Feet from the | North/South line | Feet from the | East/West line | County |
|---------------|---------|----------|-------------------|---------|---------------|------------------|---------------|----------------|--------|
| P | 14 | 26 SOUTH | 27 EAST, N.M.P.M. | | 25' | SOUTH | 530' | EAST | EDDY |

| | | | |
|--------------------------------------|---|----------------------------------|-------------------------|
| ¹² Dedicated Acres 640 | ¹³ Joint or Infill INFILL | ¹⁴ Consolidation Code | ¹⁵ Order No. |
|--------------------------------------|---|----------------------------------|-------------------------|

No allowable will be assigned to this completion until all interests have been consolidated or a non-standard unit has been approved by the division.



District I
1625 N. French Dr., Hobbs, NM 88240
Phone: (575) 393-6161 Fax: (575) 393-0720

District II
811 S. First St., Artesia, NM 88210
Phone: (575) 748-1283 Fax: (575) 748-9720

District III
1000 Rio Brazos Road, Aztec, NM 87410
Phone: (505) 334-6178 Fax: (505) 334-6170

District IV
1220 S. St. Francis Dr., Santa Fe, NM 87505
Phone: (505) 476-3460 Fax: (505) 476-3462

State of New Mexico
Energy, Minerals & Natural Resources Department
OIL CONSERVATION DIVISION
1220 South St. Francis Dr.
Santa Fe, NM 87505

Form C-102
Revised August 1, 2011
Submit one copy to appropriate
District Office

AMENDED REPORT

WELL LOCATION AND ACREAGE DEDICATION PLAT

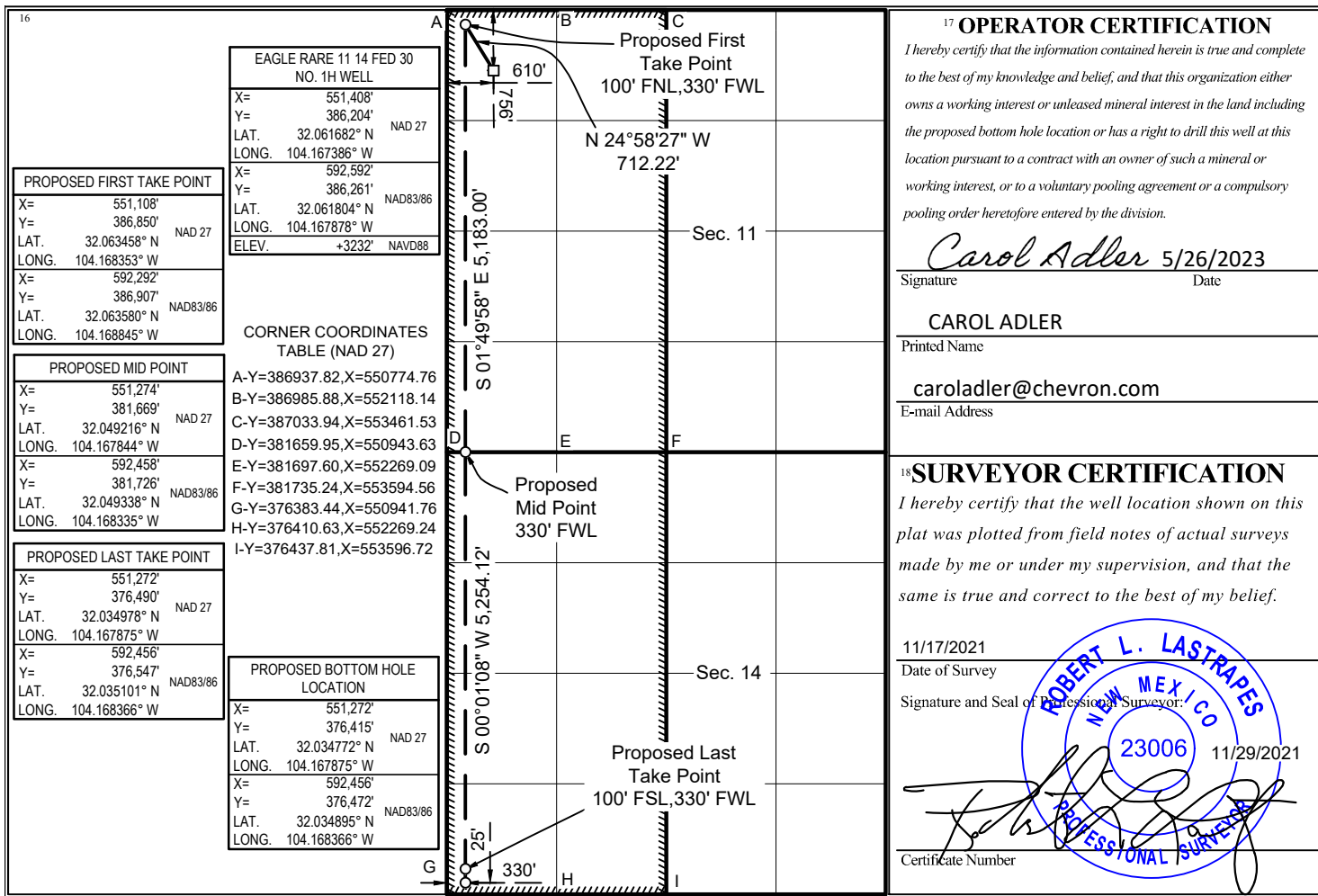
| | | |
|--|--|--|
| ¹ API Number 30-015-53225 | ² Pool Code 16800 | ³ Pool Name DELAWARE RIVER: BONE SPRING |
| ⁴ Property Code 333642 | ⁵ Property Name EAGLE RARE 11 14 FED 30 | |
| ⁷ OGRID No. 4323 | ⁸ Operator Name CHEVRON U.S.A. INC. | |
| | | ⁶ Well Number 1H |
| | | ⁹ Elevation 3232' |

| ¹⁰ Surface Location | | | | | | | | | |
|--------------------------------|---------|----------|-------------------|---------|---------------|------------------|---------------|----------------|--------|
| UL or lot no. | Section | Township | Range | Lot Idn | Feet from the | North/South line | Feet from the | East/West line | County |
| D | 11 | 26 SOUTH | 27 EAST, N.M.P.M. | | 756' | NORTH | 610' | WEST | EDDY |

| ¹¹ Bottom Hole Location If Different From Surface | | | | | | | | | |
|--|---------|----------|-------------------|---------|---------------|------------------|---------------|----------------|--------|
| UL or lot no. | Section | Township | Range | Lot Idn | Feet from the | North/South line | Feet from the | East/West line | County |
| M | 14 | 26 SOUTH | 27 EAST, N.M.P.M. | | 25' | SOUTH | 330' | WEST | EDDY |

| | | | |
|---|--|----------------------------------|-------------------------|
| ¹² Dedicated Acres 640 | ¹³ Joint or Infill INFILL | ¹⁴ Consolidation Code | ¹⁵ Order No. |
|---|--|----------------------------------|-------------------------|

No allowable will be assigned to this completion until all interests have been consolidated or a non-standard unit has been approved by the division.



District I
1625 N. French Dr., Hobbs, NM 88240
Phone: (575) 393-6161 Fax: (575) 393-0720

District II
811 S. First St., Artesia, NM 88210
Phone: (575) 748-1283 Fax: (575) 748-9720

District III
1000 Rio Brazos Road, Aztec, NM 87410
Phone: (505) 334-6178 Fax: (505) 334-6170

District IV
1220 S. St. Francis Dr., Santa Fe, NM 87505
Phone: (505) 476-3460 Fax: (505) 476-3462

State of New Mexico
Energy, Minerals & Natural Resources Department
OIL CONSERVATION DIVISION
1220 South St. Francis Dr.
Santa Fe, NM 87505

Form C-102
Revised August 1, 2011
Submit one copy to appropriate
District Office

AMENDED REPORT

WELL LOCATION AND ACREAGE DEDICATION PLAT

| | | |
|--|--|--|
| ¹ API Number 30-015-53224 | ² Pool Code 16800 | ³ Pool Name DELAWARE RIVER: BONE SPRING |
| ⁴ Property Code 333642 | ⁵ Property Name EAGLE RARE 11 14 FED 30 | |
| ⁷ GRID No. 4323 | ⁸ Operator Name CHEVRON U.S.A. INC. | ⁹ Elevation 3232' |

¹⁰ Surface Location

| UL or lot no. | Section | Township | Range | Lot Idn | Feet from the | North/South line | Feet from the | East/West line | County |
|---------------|---------|----------|-------------------|---------|---------------|------------------|---------------|----------------|--------|
| D | 11 | 26 SOUTH | 27 EAST, N.M.P.M. | | 757' | NORTH | 630' | WEST | EDDY |

¹¹ Bottom Hole Location If Different From Surface

| UL or lot no. | Section | Township | Range | Lot Idn | Feet from the | North/South line | Feet from the | East/West line | County |
|---------------|---------|----------|-------------------|---------|---------------|------------------|---------------|----------------|--------|
| M | 14 | 26 SOUTH | 27 EAST, N.M.P.M. | | 25' | SOUTH | 1380' | WEST | EDDY |

| | | | |
|---|--|----------------------------------|-------------------------|
| ¹² Dedicated Acres 640 | ¹³ Joint or Infill DEFINING | ¹⁴ Consolidation Code | ¹⁵ Order No. |
|---|--|----------------------------------|-------------------------|

No allowable will be assigned to this completion until all interests have been consolidated or a non-standard unit has been approved by the division.

EAGLE RARE 11 14 FED 30 NO. 2H WELL
X= 551,428' Y= 386,204' NAD 27
LAT. 32.061681° N LONG. 104.167321° W

PROPOSED FIRST TAKE POINT
X= 552,157' Y= 386,887' NAD 27
LAT. 32.063556° N LONG. 104.164966° W

PROPOSED MID POINT
X= 552,323' Y= 381,699' NAD 27
LAT. 32.049293° N LONG. 104.164456° W

PROPOSED LAST TAKE POINT
X= 552,322' Y= 376,512' NAD 27
LAT. 32.035033° N LONG. 104.164486° W

PROPOSED BOTTOM HOLE LOCATION
X= 552,322' Y= 376,437' NAD 27
LAT. 32.034827° N LONG. 104.164487° W

CORNER COORDINATES TABLE (NAD 27)
A-Y=386937.82, X=550774.76
B-Y=386985.88, X=552118.14
C-Y=387033.94, X=553461.53
D-Y=381659.95, X=550943.63
E-Y=381697.60, X=552269.09
F-Y=381735.24, X=553594.56
G-Y=376383.44, X=550941.76
H-Y=376410.63, X=552269.24
I-Y=376437.81, X=553596.72

¹⁷ OPERATOR CERTIFICATION
I hereby certify that the information contained herein is true and complete to the best of my knowledge and belief, and that this organization either owns a working interest or unleased mineral interest in the land including the proposed bottom hole location or has a right to drill this well at this location pursuant to a contract with an owner of such a mineral or working interest, or to a voluntary pooling agreement or a compulsory pooling order heretofore entered by the division.

Carol Adler 5/26/2023
Signature Date

CAROL ADLER
Printed Name

caroladler@chevron.com
E-mail Address

¹⁸ SURVEYOR CERTIFICATION
I hereby certify that the well location shown on this plat was plotted from field notes of actual surveys made by me or under my supervision, and that the same is true and correct to the best of my belief.

11/17/2021
Date of Survey

Signature and Seal of Professional Surveyor:

Certificate Number

District I
1625 N. French Dr., Hobbs, NM 88240
Phone: (575) 393-6161 Fax: (575) 393-0720

District II
811 S. First St., Artesia, NM 88210
Phone: (575) 748-1283 Fax: (575) 748-9720

District III
1000 Rio Brazos Road, Aztec, NM 87410
Phone: (505) 334-6178 Fax: (505) 334-6170

District IV
1220 S. St. Francis Dr., Santa Fe, NM 87505
Phone: (505) 476-3460 Fax: (505) 476-3462

State of New Mexico
Energy, Minerals & Natural Resources Department
OIL CONSERVATION DIVISION
1220 South St. Francis Dr.
Santa Fe, NM 87505

Form C-102
Revised August 1, 2011
Submit one copy to appropriate
District Office

AMENDED REPORT

WELL LOCATION AND ACREAGE DEDICATION PLAT

| | | |
|--|--|--|
| ¹ API Number 30-015-53226 | ² Pool Code 16800 | ³ Pool Name DELAWARE RIVER: BONE SPRING |
| ⁴ Property Code 333642 | ⁵ Property Name EAGLE RARE 11 14 FED 30 | |
| ⁷ OGRID No. 4323 | ⁸ Operator Name CHEVRON U.S.A. INC. | ⁶ Well Number 3H |
| | | ⁹ Elevation 3232' |

¹⁰ Surface Location

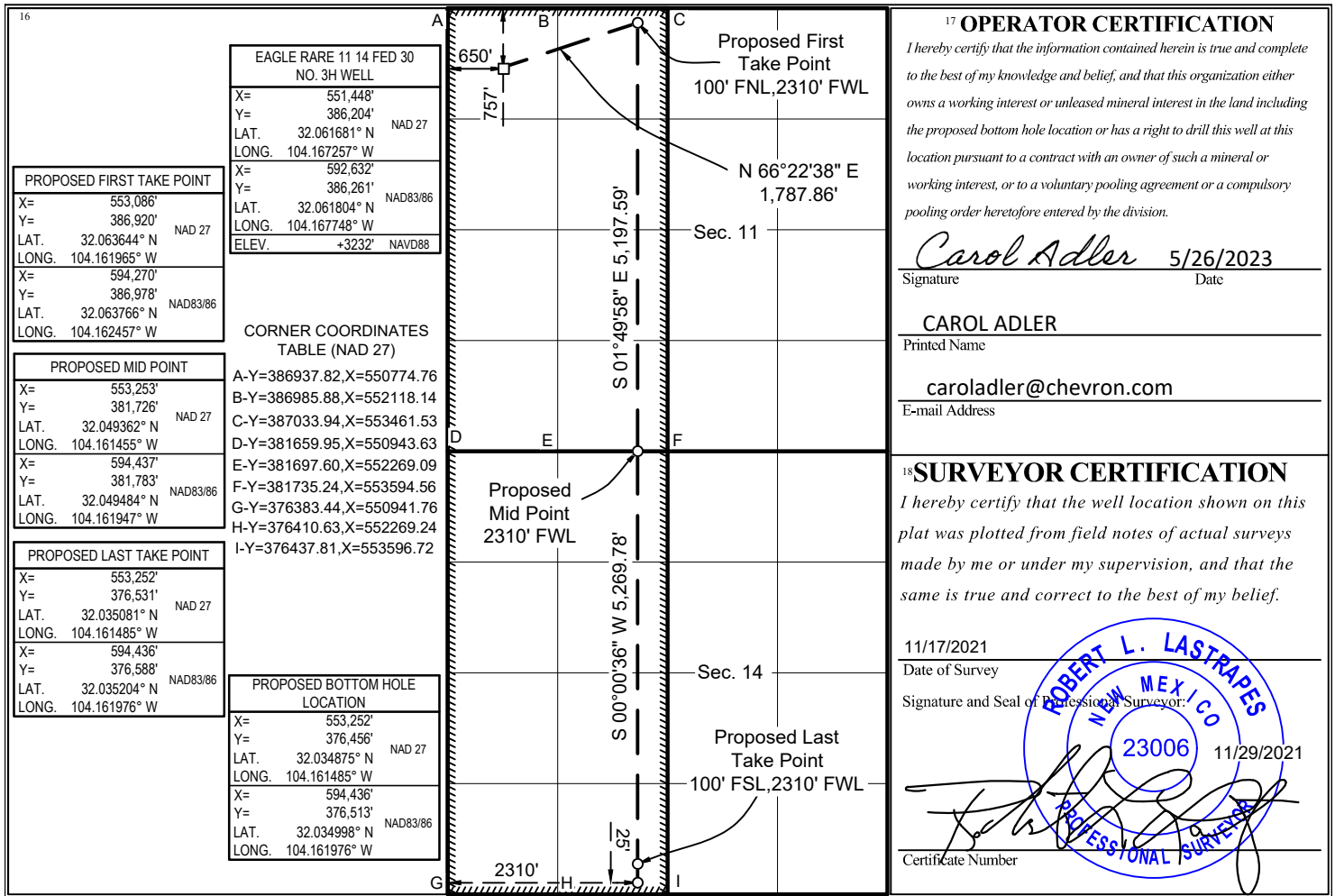
| UL or lot no. | Section | Township | Range | Lot Idn | Feet from the | North/South line | Feet from the | East/West line | County |
|---------------|---------|----------|-------------------|---------|---------------|------------------|---------------|----------------|--------|
| D | 11 | 26 SOUTH | 27 EAST, N.M.P.M. | | 757' | NORTH | 650' | WEST | EDDY |

¹¹ Bottom Hole Location If Different From Surface

| UL or lot no. | Section | Township | Range | Lot Idn | Feet from the | North/South line | Feet from the | East/West line | County |
|---------------|---------|----------|-------------------|---------|---------------|------------------|---------------|----------------|--------|
| M | 14 | 26 SOUTH | 27 EAST, N.M.P.M. | | 25' | SOUTH | 2310' | WEST | EDDY |

| | | | |
|---|--|----------------------------------|-------------------------|
| ¹² Dedicated Acres 640 | ¹³ Joint or Infill INFILL | ¹⁴ Consolidation Code | ¹⁵ Order No. |
|---|--|----------------------------------|-------------------------|

No allowable will be assigned to this completion until all interests have been consolidated or a non-standard unit has been approved by the division.



District I
1625 N. French Dr., Hobbs, NM 88240
Phone: (575) 393-6161 Fax: (575) 393-0720
District II
811 S. First St., Artesia, NM 88210
Phone: (505) 748-1283 Fax: (575) 748-9720
District III
1000 Rio Brazos Road, Aztec, NM 87410
Phone: (505) 334-6178 Fax: (505) 334-6170
District IV
1220 S. St. Francis Dr., Santa Fe, NM 87505
Phone: (505) 476-3460 Fax: (505) 476-3462

State of New Mexico
Energy, Minerals & Natural Resources Department
OIL CONSERVATION DIVISION
1220 South St. Francis Dr.
Santa Fe, NM 87505

Form C-102
Revised August 1, 2011
Submit one copy to appropriate
District Office

AMENDED REPORT

WELL LOCATION AND ACREAGE DEDICATION PLAT

| | | |
|--|---|---|
| ¹ API Number 30-015-50181 | ² Pool Code 16800 | ³ Pool Name DELAWARE RIVER: BONE SPRING |
| ⁴ Property Code 332912 | ⁵ Property Name MACALLAN 12 1 FED ST COM 23 | |
| ⁷ OGRID No. 4323 | ⁸ Operator Name CHEVRON U.S.A. INC. | ⁶ Well Number 1H ⁹ Elevation 3181' |

¹⁰ Surface Location

| UL or lot no. | Section | Township | Range | Lot Idn | Feet from the | North/South line | Feet from the | East/West line | County |
|---------------|---------|----------|-------------------|---------|---------------|------------------|---------------|----------------|--------|
| D | 13 | 26 SOUTH | 27 EAST, N.M.P.M. | | 170' | NORTH | 1152' | WEST | EDDY |

¹¹ Bottom Hole Location If Different From Surface

| UL or lot no. | Section | Township | Range | Lot Idn | Feet from the | North/South line | Feet from the | East/West line | County |
|---------------|---------|----------|-------------------|---------|---------------|------------------|---------------|----------------|--------|
| D | 1 | 26 SOUTH | 27 EAST, N.M.P.M. | | 25' | NORTH | 330' | WEST | EDDY |

| | | | |
|--------------------------------------|---|----------------------------------|-------------------------|
| ¹² Dedicated Acres 640 | ¹³ Joint or Infill INFILL | ¹⁴ Consolidation Code | ¹⁵ Order No. |
|--------------------------------------|---|----------------------------------|-------------------------|

No allowable will be assigned to this completion until all interests have been consolidated or a non-standard unit has been approved by the division.

¹⁶

MACALLAN 12 1 FED ST COM 23
NO. 1H WELL

X= 557,398'
Y= 381,641'
LAT. 32.049111° N NAD 27
LONG. 104.148077° W

X= 598,582'
Y= 381,698'
LAT. 32.049234° N NAD83/86
LONG. 104.148567° W
ELEV. +3181' NAVD88

CORNER COORDINATES TABLE (NAD 27)

A-Y=392443.13,X=556198.44
B-Y=392444.46,X=557525.49
C-Y=392445.78,X=558852.55
D-Y=392447.11,X=560179.61
E-Y=392448.44,X=561506.67
F-Y=387127.27,X=556148.39
G-Y=387127.91,X=557492.13
H-Y=387128.55,X=558835.86
I-Y=387129.18,X=560179.59
J-Y=387129.82,X=561523.33
K-Y=381810.53,X=556245.48
L-Y=381811.24,X=557568.91
M-Y=381811.95,X=558892.34
N-Y=381812.67,X=560215.77
O-Y=381813.38,X=561539.20
P-Y=376492.19,X=556251.68
Q-Y=376493.19,X=558903.27

PROPOSED FIRST TAKE POINT

X= 556,574'
Y= 381,911'
LAT. 32.049856° N NAD 27
LONG. 104.150736° W

X= 597,758'
Y= 381,968'
LAT. 32.049979° N NAD83/86
LONG. 104.151226° W

PROPOSED MID POINT

X= 556,478'
Y= 387,127'
LAT. 32.064197° N NAD 27
LONG. 104.151015° W

X= 597,663'
Y= 387,185'
LAT. 32.064320° N NAD83/86
LONG. 104.151506° W

PROPOSED LAST TAKE POINT

X= 556,528'
Y= 392,343'
LAT. 32.078536° N NAD 27
LONG. 104.150828° W

X= 597,711'
Y= 392,401'
LAT. 32.078659° N NAD83/86
LONG. 104.151319° W

PROPOSED BOTTOM HOLE LOCATION

X= 556,528'
Y= 392,418'
LAT. 32.078743° N NAD 27
LONG. 104.150825° W

X= 597,712'
Y= 392,476'
LAT. 32.078865° N NAD83/86
LONG. 104.151317° W

¹⁷ OPERATOR CERTIFICATION

I hereby certify that the information contained herein is true and complete to the best of my knowledge and belief, and that this organization either owns a working interest or unleased mineral interest in the land including the proposed bottom hole location or has a right to drill this well at this location pursuant to a contract with an owner of such a mineral or working interest, or to a voluntary pooling agreement or a compulsory pooling order heretofore entered by the division.

Carol Adler 5/26/2023
Signature Date

CAROL ADLER
Printed Name

caroladler@chevron.com
E-mail Address

¹⁸ SURVEYOR CERTIFICATION

I hereby certify that the well location shown on this plat was plotted from field notes of actual surveys made by me or under my supervision, and that the same is true and correct to the best of my belief.

08/03/2021
Date of Survey

Signature and Seal of Professional Surveyor:

Steven M. Coleman
Certificate Number 08/10/2021

District I
1625 N. French Dr., Hobbs, NM 88240
Phone: (575) 393-6161 Fax: (575) 393-0720

District II
811 S. First St., Artesia, NM 88210
Phone: (575) 748-1283 Fax: (575) 748-9720

District III
1000 Rio Brazos Road, Aztec, NM 87410
Phone: (505) 334-6178 Fax: (505) 334-6170

District IV
1220 S. St. Francis Dr., Santa Fe, NM 87505
Phone: (505) 476-3460 Fax: (505) 476-3462

State of New Mexico
Energy, Minerals & Natural Resources Department
OIL CONSERVATION DIVISION
1220 South St. Francis Dr.
Santa Fe, NM 87505

Form C-102
Revised August 1, 2011
Submit one copy to appropriate
District Office

AMENDED REPORT

WELL LOCATION AND ACREAGE DEDICATION PLAT

| | | |
|--|---|---|
| ¹ API Number 30-015-50182 | ² Pool Code 64010 30215 | ³ Pool Name WELCH: BONE SPRING |
| ⁴ Property Code 333570 | ⁵ Property Name SMOKE WAGON 10 15 FED COM 28 | |
| ⁷ OGRID No. 4323 | ⁸ Operator Name CHEVRON U.S.A. INC. | |
| | | ⁶ Well Number 1H |
| | | ⁹ Elevation 3248' |

| ¹⁰ Surface Location | | | | | | | | | |
|--------------------------------|---------|----------|-------------------|---------|---------------|------------------|---------------|----------------|--------|
| UL or lot no. | Section | Township | Range | Lot Idn | Feet from the | North/South line | Feet from the | East/West line | County |
| P | 3 | 26 SOUTH | 27 EAST, N.M.P.M. | | 1017' | SOUTH | 1150' | EAST | EDDY |

| ¹¹ Bottom Hole Location If Different From Surface | | | | | | | | | |
|--|---------|----------|-------------------|---------|---------------|------------------|---------------|----------------|--------|
| UL or lot no. | Section | Township | Range | Lot Idn | Feet from the | North/South line | Feet from the | East/West line | County |
| O | 15 | 26 SOUTH | 27 EAST, N.M.P.M. | | 25' | SOUTH | 1585' | EAST | EDDY |

| | | | |
|---|--|----------------------------------|-------------------------|
| ¹² Dedicated Acres 640 | ¹³ Joint or Infill DEFINING | ¹⁴ Consolidation Code | ¹⁵ Order No. |
|---|--|----------------------------------|-------------------------|

No allowable will be assigned to this completion until all interests have been consolidated or a non-standard unit has been approved by the division.

| SMOKE WAGON 10 15 FED COM 28 NO. 1H WELL | |
|---|----------|
| X= 549,645' | NAD 27 |
| Y= 387,970' | |
| LAT. 32.066544° N | |
| LONG. 104.173070° W | |
| X= 590,829' | NAD83/86 |
| Y= 388,027' | |
| LAT. 32.066666° N | |
| LONG. 104.173562° W | |
| ELEV. +3248' | NAVD88 |

| CORNER COORDINATES TABLE (NAD 27) | |
|--------------------------------------|--|
| A - Y=392448.13, X=550882.93 | |
| B - Y=387009.20, X=545492.91 | |
| C - Y=386973.51, X=548133.83 | |
| D - Y=386955.67, X=549454.29 | |
| E - Y=386937.82, X=550774.76 | |
| F - Y=381711.59, X=545622.05 | |
| G - Y=381685.77, X=548282.84 | |
| H - Y=381672.86, X=549613.24 | |
| I - Y=381659.95, X=550943.63 | |
| J - Y=376414.09, X=545653.53 | |
| K - Y=376398.76, X=548297.64 | |
| L - Y=376391.10, X=549619.70 | |
| M - Y=376383.44, X=550941.76 | |

| PROPOSED FIRST TAKE POINT | |
|---------------------------|----------|
| X= 549,191' | NAD 27 |
| Y= 386,859' | |
| LAT. 32.063492° N | |
| LONG. 104.174539° W | |
| X= 590,375' | NAD83/86 |
| Y= 386,916' | |
| LAT. 32.063614° N | |
| LONG. 104.175031° W | |
| PROPOSED MID POINT | |
| X= 549,359' | NAD 27 |
| Y= 381,675' | |
| LAT. 32.049240° N | |
| LONG. 104.174024° W | |
| X= 590,543' | NAD83/86 |
| Y= 381,732' | |
| LAT. 32.049363° N | |
| LONG. 104.174516° W | |
| PROPOSED LAST TAKE POINT | |
| X= 549,357' | NAD 27 |
| Y= 376,493' | |
| LAT. 32.034993° N | |
| LONG. 104.174055° W | |
| X= 590,541' | NAD83/86 |
| Y= 376,550' | |
| LAT. 32.035115° N | |
| LONG. 104.174546° W | |

| PROPOSED BOTTOM HOLE LOCATION | |
|----------------------------------|----------|
| X= 549,357' | NAD 27 |
| Y= 376,418' | |
| LAT. 32.034787° N | |
| LONG. 104.174055° W | |
| X= 590,541' | NAD83/86 |
| Y= 376,475' | |
| LAT. 32.034909° N | |
| LONG. 104.174547° W | |

Sec. 3
S 22°12'33" W
1,199.80'
1017'
1150'
Proposed First Take Point
100' FNL, 1,585' FEL
Sec. 10
S 01°50'50" E 5,186.57'
Proposed Mid Point
Sec. 15
S 00°01'13" W 5,257.71'
Proposed Last Take Point
100' FSL, 1,585' FEL
25'
1585'

¹⁷ OPERATOR CERTIFICATION

I hereby certify that the information contained herein is true and complete to the best of my knowledge and belief, and that this organization either owns a working interest or unleased mineral interest in the land including the proposed bottom hole location or has a right to drill this well at this location pursuant to a contract with an owner of such a mineral or working interest, or to a voluntary pooling agreement or a compulsory pooling order heretofore entered by the division.

Carol Adler 5/26/2023
Signature Date

CAROL ADLER
Printed Name

caroladler@chevron.com
E-mail Address

¹⁸ SURVEYOR CERTIFICATION

I hereby certify that the well location shown on this plat was plotted from field notes of actual surveys made by me or under my supervision, and that the same is true and correct to the best of my belief.

07/09/2021
Date of Survey

STEVEN M. COLEMAN
NEW MEXICO
22921
PROFESSIONAL SURVEYOR

Steven M. Coleman
Signature and Seal of Professional Surveyor

Certificate Number 08/05/2021

District I
1625 N. French Dr., Hobbs, NM 88240
Phone: (575) 393-6161 Fax: (575) 393-0720

District II
811 S. First St., Artesia, NM 88210
Phone: (575) 748-1283 Fax: (575) 748-9720

District III
1000 Rio Brazos Road, Aztec, NM 87410
Phone: (505) 334-6178 Fax: (505) 334-6170

District IV
1220 S. St. Francis Dr., Santa Fe, NM 87505
Phone: (505) 476-3460 Fax: (505) 476-3462

State of New Mexico
Energy, Minerals & Natural Resources Department
OIL CONSERVATION DIVISION
1220 South St. Francis Dr.
Santa Fe, NM 87505

Form C-102
Revised August 1, 2011
Submit one copy to appropriate
District Office

AMENDED REPORT

WELL LOCATION AND ACREAGE DEDICATION PLAT

| | | |
|--|--|--|
| ¹ API Number 30-015-50183 | ² Pool Code 64010 30215 | ³ Pool Name WELCH: BONE SPRING |
| ⁴ Property Code 333570 | ⁵ Property Name SMOKE WAGON 10 15 FED COM 28 | |
| ⁷ OGRID No. 4323 | ⁸ Operator Name CHEVRON U.S.A. INC. | |
| | | ⁶ Well Number 2H |
| | | ⁹ Elevation 3248' |

¹⁰ Surface Location

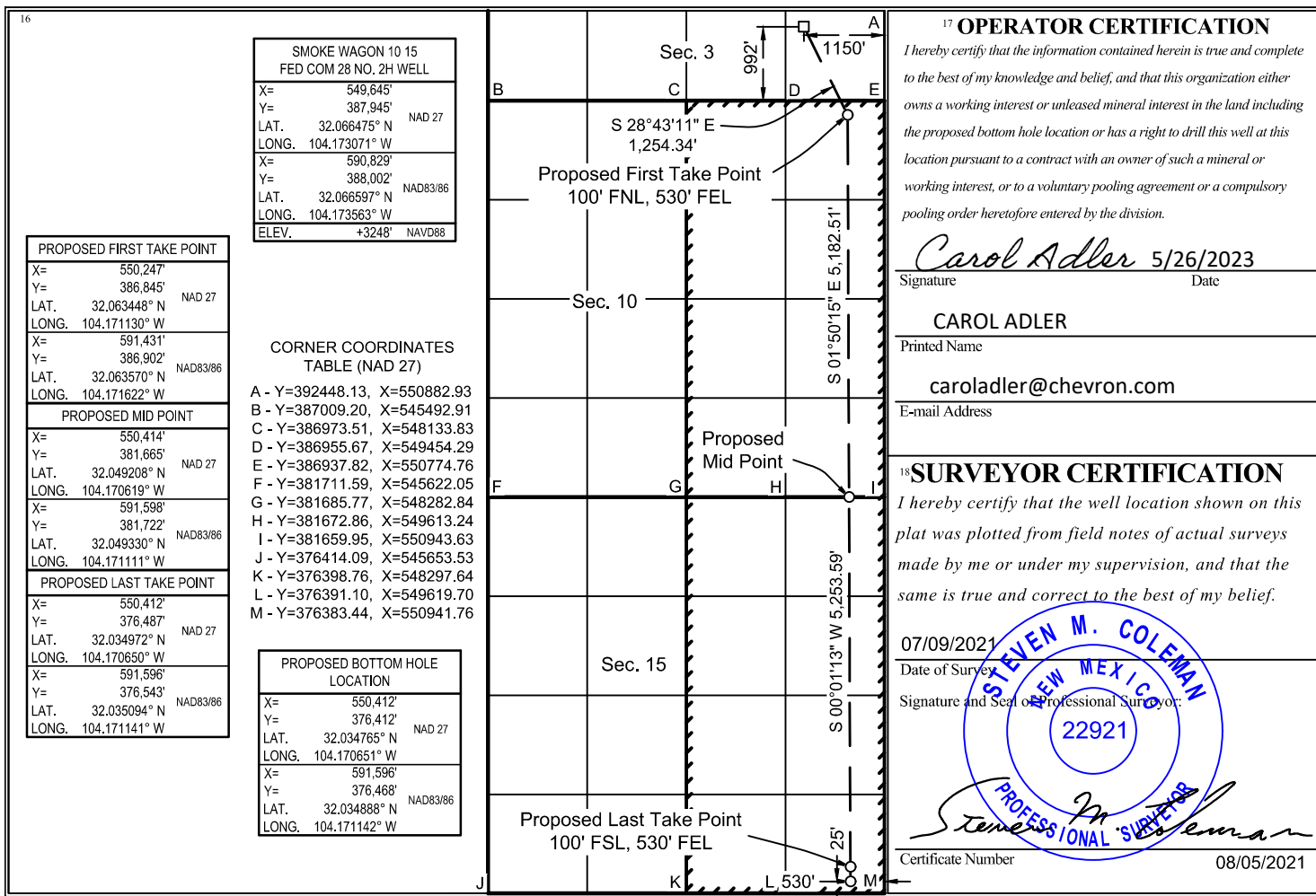
| UL or lot no. | Section | Township | Range | Lot Idn | Feet from the | North/South line | Feet from the | East/West line | County |
|---------------|---------|----------|-------------------|---------|---------------|------------------|---------------|----------------|--------|
| P | 3 | 26 SOUTH | 27 EAST, N.M.P.M. | | 992' | SOUTH | 1150' | EAST | EDDY |

¹¹ Bottom Hole Location If Different From Surface

| UL or lot no. | Section | Township | Range | Lot Idn | Feet from the | North/South line | Feet from the | East/West line | County |
|---------------|---------|----------|-------------------|---------|---------------|------------------|---------------|----------------|--------|
| P | 15 | 26 SOUTH | 27 EAST, N.M.P.M. | | 25' | SOUTH | 530' | EAST | EDDY |

| | | | |
|--------------------------------------|---|----------------------------------|-------------------------|
| ¹² Dedicated Acres 640 | ¹³ Joint or Infill INFILL | ¹⁴ Consolidation Code | ¹⁵ Order No. |
|--------------------------------------|---|----------------------------------|-------------------------|

No allowable will be assigned to this completion until all interests have been consolidated or a non-standard unit has been approved by the division.



17 OPERATOR CERTIFICATION

I hereby certify that the information contained herein is true and complete to the best of my knowledge and belief, and that this organization either owns a working interest or unleased mineral interest in the land including the proposed bottom hole location or has a right to drill this well at this location pursuant to a contract with an owner of such a mineral or working interest, or to a voluntary pooling agreement or a compulsory pooling order heretofore entered by the division.

Carol Adler 5/26/2023
Signature Date

CAROL ADLER
Printed Name

caroladler@chevron.com
E-mail Address

18 SURVEYOR CERTIFICATION

I hereby certify that the well location shown on this plat was plotted from field notes of actual surveys made by me or under my supervision, and that the same is true and correct to the best of my belief.

07/09/2021
Date of Survey

STEVEN M. COLEMAN
NEW MEXICO
22921
PROFESSIONAL SURVEYOR

Steven M. Coleman
Signature and Seal of Professional Surveyor

Certificate Number 08/05/2021