

STATE OF NEW MEXICO
ENERGY, MINERALS AND NATURAL RESOURCES DEPARTMENT
OIL CONSERVATION DIVISION

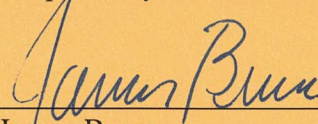
APPLICATION OF E.G.L. REOURCES,
INC. FOR COMPULSORY POOLING, LEA
COUNTY, NEW MEXICO.

Case No. 23329

NOTICE OF FILING ADDITIONAL EXHIBIT

E.G.L. Resources, Inc. hereby submits for filing Exhibit 3-G, the horizontal drilling plans..

Respectfully submitted,

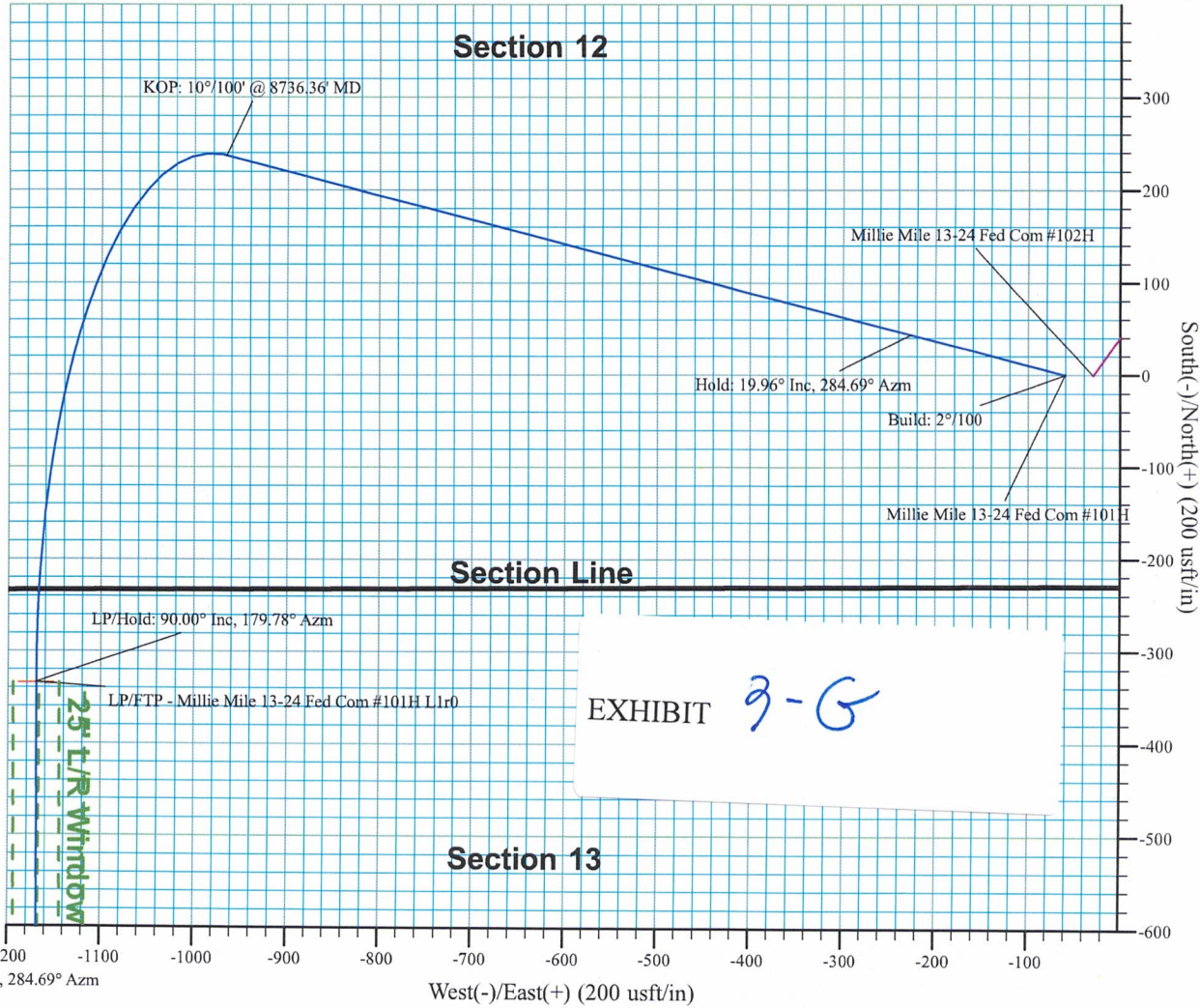
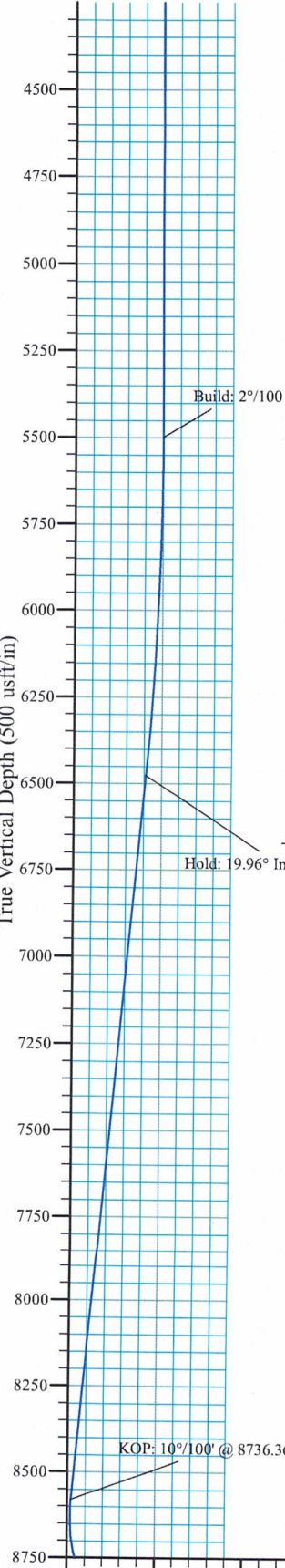


James Bruce
Post Office Box 1056
Santa Fe, New Mexico 87504
(505) 982-2043
jamesbruc@aol.com

Attorney for E.G.L. Resources, Inc.

E. G. L. Resources, Inc.
A PBEX Resources Co.

Millie Mile 13-24 Fed Com #101H
Lea Co., NM (NAD83 NME)
Job No. WT-23-***
Lateral 1r0



SECTION DETAILS										
Sec	MD	Inc	Azi	TVD	+N/-S	+E/-W	Dleg	TFace	V Sect	Annotation
1	0.00	0.00	0.00	0.00	-0.15	-60.10	0.000	0.00	0.00	
2	5500.00	0.00	0.00	5500.00	-0.15	-60.10	0.000	0.00	0.00	Build: 2°/100
3	6497.83	19.96	284.69	6477.78	43.47	-226.50	2.000	284.69	-44.34	Hold: 19.96° Inc, 284.69° Azm
4	8736.36	19.96	284.69	8581.89	237.19	-965.57	0.000	0.00	-241.29	KOP: 10°/100' @ 8736.36' MD
5	9686.74	90.00	179.78	9170.00	-334.34	-1169.74	10.000	-104.05	329.35	LP/Hold: 90.00° Inc, 179.78° Azm
6	14868.10	90.00	179.78	9170.00	-5515.67	-1149.88	0.000	0.00	5510.71	Turn: 2°/100
7	14871.23	90.00	179.72	9170.00	-5518.79	-1149.87	2.000	-90.00	5513.83	Hold: 90.00° Inc, 179.72° Azm
8	20052.55	90.00	179.72	9170.00	-10700.05	-1124.36	0.000	0.00	10695.15	PBHL

DESIGN TARGET DETAILS							
Name	TVD	+N/-S	+E/-W	Northing	Easting	Latitude	Longitude
LP/FTP - Millie Mile 13-24 Fed Com #101H L1r0	9170.00	-334.34	-1169.74	607188.03	759924.00	32.66720	-103.62300
LTP/PBHL - Millie Mile 13-24 Fed Com #101H L1r0	9170.00	-10700.05	-1124.36	596822.32	759969.38	32.63870	-103.62308
PP2 - Millie Mile 13-24 Fed Com #101H L1r0	9170.00	-4195.72	-1154.94	603326.65	759938.80	32.65658	-103.62304
PP3 - Millie Mile 13-24 Fed Com #101H L1r0	9170.00	-5515.67	-1149.88	602006.70	759943.86	32.65295	-103.62305

PROJECT DETAILS: Lea Co., NM (NAD83 NME)

Geodetic System: US State Plane 1983
Datum: North American Datum 1983
Ellipsoid: GRS 1980
Zone: New Mexico Eastern Zone

System Datum: Mean Sea Level

SITE DETAILS: Millie Mile 13-24 Fed Com Pad

Site Centre Northing: 607522.37
Easting: 761093.74

Positional Uncertainty: 0.00
Convergence: 0.39
Local North: Grid



Azimuths to Grid North
True North: -0.39°
Magnetic North: 5.85°

Magnetic Field
Strength: 47717.9nT
Dip Angle: 60.50°
Date: 7/3/2023

E.G.L. Resources Inc.

Millie Mile 13-24 Fed Com #101H
Lea Co., NM (NAD83 NME)
Job No. WT-23-***
Lateral 1r0

E.G.L. Resources, Inc.
A PBEX Resources Co.

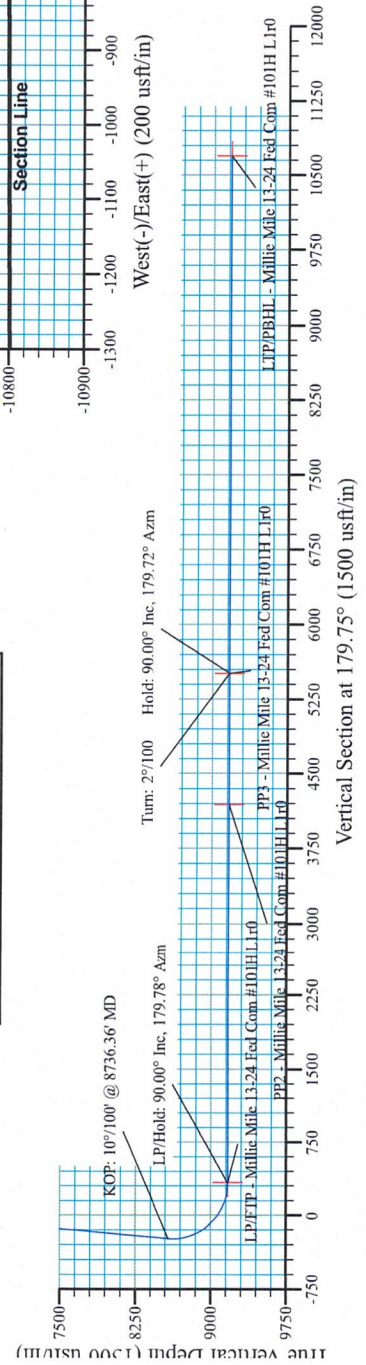
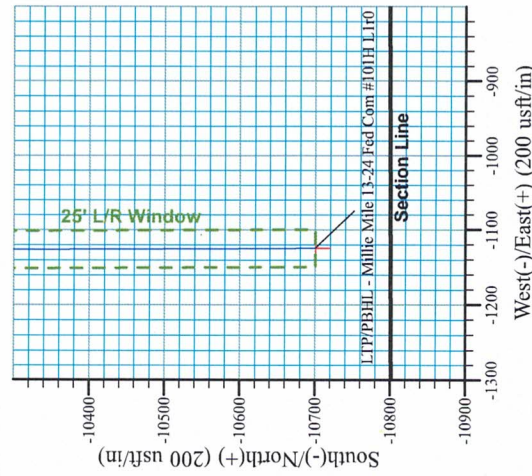
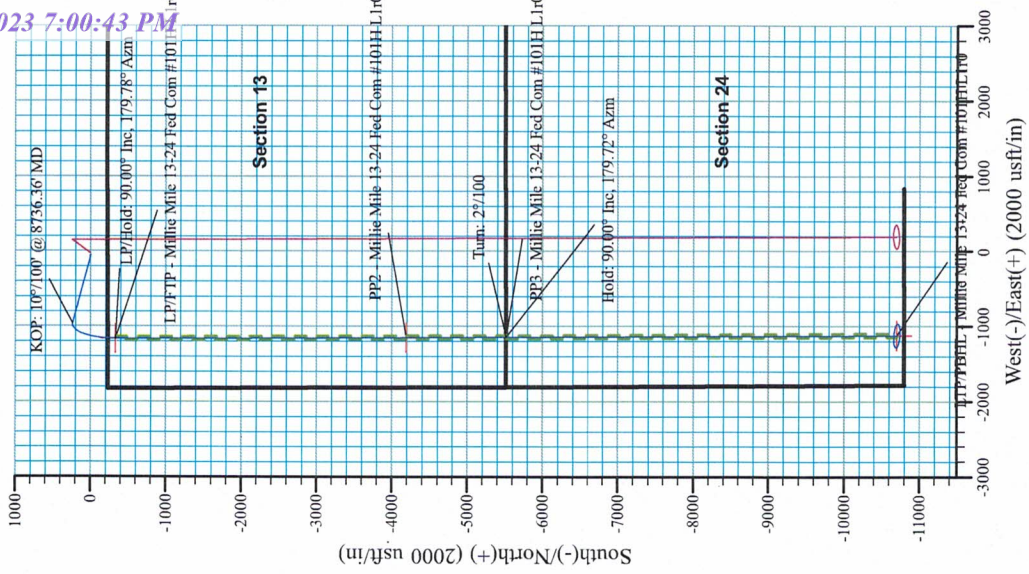
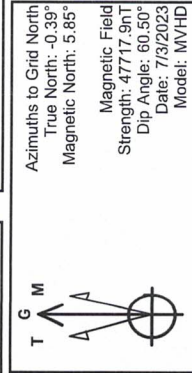


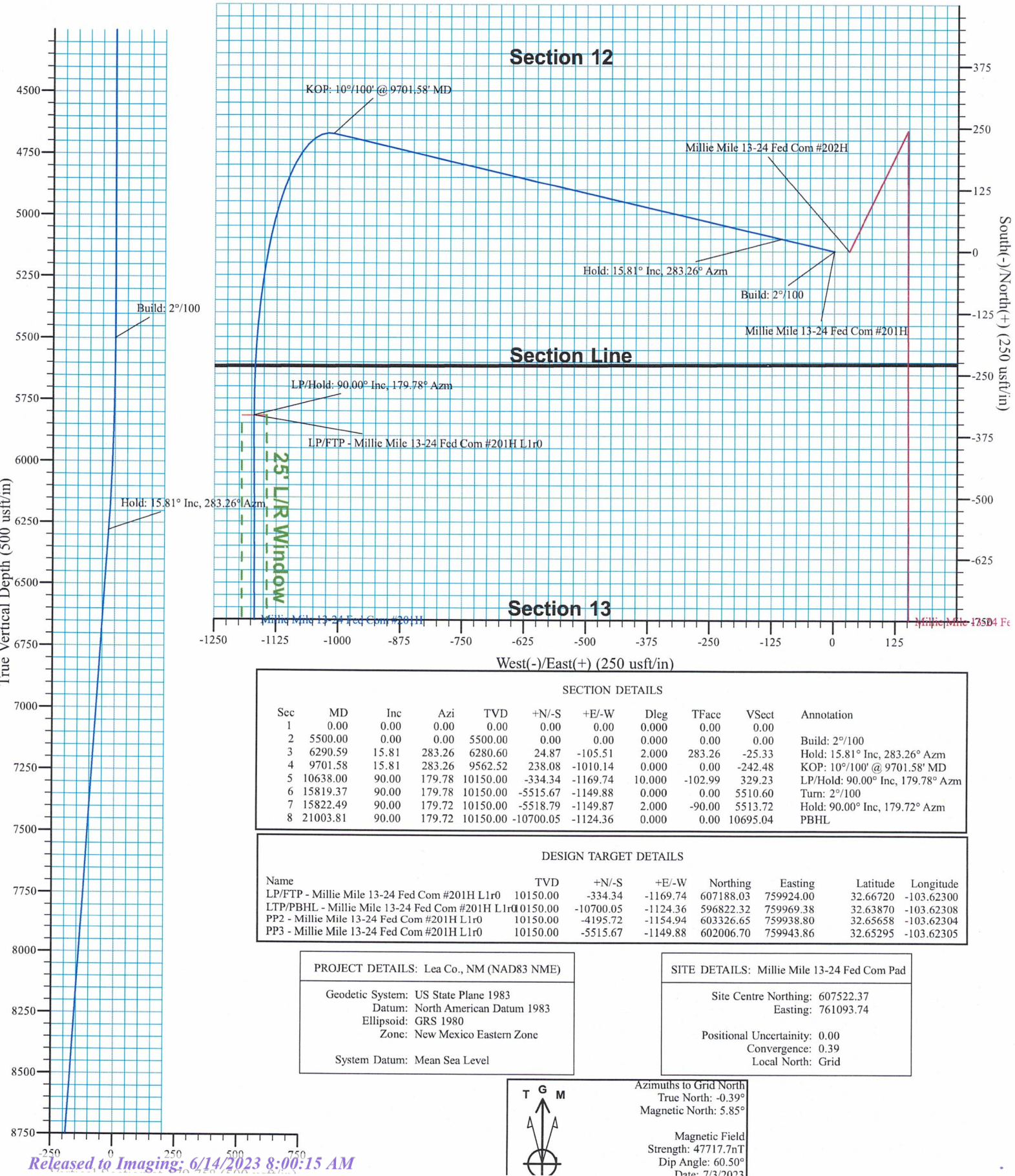
SECTION DETAILS											
Sec	MD	Inc	Azi	+N/-S	TVD	+N/-S	+E/-W	Dleg	V/Sec	Target	Annotation
0.00	0.00	0.00	0.00	-0.15	0.00	0.00	-60.10	0.000	0.00	0.00	Build: 2°/100
5500.00	0.00	0.00	5500.00	-0.15	0.00	0.00	-60.10	0.000	0.00	0.00	Hold: 19.96° Inc, 284.69° Azm
6497.83	19.96	284.69	6477.78	43.47	-226.50	2.000	-44.34	0.000	0.00	0.00	KOP: 10°/100' @ 8736.36' MD
8736.36	19.96	284.69	8581.89	237.19	-965.57	0.000	-241.29	0.000	0.00	0.00	LP/FTP - Millie Mile 13-24 Fed Com #101H L1r0
9686.74	90.00	179.78	9170.00	-334.34	-1169.74	10.000	-104.05	329.35	LP/FTP - Millie Mile 13-24 Fed Com #101H L1r0	LP/FTP - Millie Mile 13-24 Fed Com #101H L1r0	LP/FTP - Millie Mile 13-24 Fed Com #101H L1r0
14868.10	90.00	179.78	9170.00	-5515.67	-1149.88	0.000	0.00	5510.71	PP3 - Millie Mile 13-24 Fed Com #101H L1r0	PP3 - Millie Mile 13-24 Fed Com #101H L1r0	PP3 - Millie Mile 13-24 Fed Com #101H L1r0
14871.23	90.00	179.72	9170.00	-5518.79	-1149.87	2.000	-90.00	5513.83	Turn: 2°/100	Turn: 2°/100	Turn: 2°/100
20052.55	90.00	179.72	9170.00	-10700.05	-1124.36	0.000	-90.00	10695.15	LTP/PBHL - Millie Mile 13-24 Fed Com #101H L1r0	LTP/PBHL - Millie Mile 13-24 Fed Com #101H L1r0	LTP/PBHL - Millie Mile 13-24 Fed Com #101H L1r0

DESIGN TARGET DETAILS				
Name	TVD	+N/-S	+E/-W	Longitude
LP/FTP - Millie Mile 13-24 Fed Com #101H L1r0	9170.00	-334.34	-1169.74	607188.03
LTP/PBHL - Millie Mile 13-24 Fed Com #101H L1r0	9170.00	-10700.05	-1124.36	596822.32
PP2 - Millie Mile 13-24 Fed Com #101H L1r0	9170.00	-4195.72	-1154.94	603326.65
PP3 - Millie Mile 13-24 Fed Com #101H L1r0	9170.00	-5515.67	-1149.88	602006.70

PROJECT DETAILS: Lea Co., NM (NAD83 NME)
Geodetic System: US State Plane 1983
Datum: North American Datum 1983
Ellipsoid: GRS 1980
Zone: New Mexico Eastern Zone
System Datum: Mean Sea Level

SITE DETAILS: Millie Mile 13-24 Fed Com Pad
Site Centre Northing: 607522.37
Easting: 761093.74
Positional Uncertainty: 0.00
Convergence: 0.39
Local North: Grid



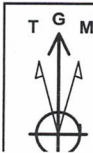


SECTION DETAILS										
Sec	MD	Inc	Azi	TVD	+N/-S	+E/-W	Dleg	TFace	V Sect	Annotation
1	0.00	0.00	0.00	0.00	0.00	0.00	0.00	0.00	0.00	
2	5500.00	0.00	0.00	5500.00	0.00	0.00	0.00	0.00	0.00	Build: 2°/100
3	6290.59	15.81	283.26	6280.60	24.87	-105.51	2.000	283.26	-25.33	Hold: 15.81° Inc, 283.26° Azm
4	9701.58	15.81	283.26	9562.52	238.08	-1010.14	0.000	0.00	-242.48	KOP: 10°/100' @ 9701.58' MD
5	10638.00	90.00	179.78	10150.00	-334.34	-1169.74	10.000	-102.99	329.23	LP/Hold: 90.00° Inc, 179.78° Azm
6	15819.37	90.00	179.78	10150.00	-5515.67	-1149.88	0.000	0.00	5510.60	Turn: 2°/100
7	15822.49	90.00	179.72	10150.00	-5518.79	-1149.87	2.000	-90.00	5513.72	Hold: 90.00° Inc, 179.72° Azm
8	21003.81	90.00	179.72	10150.00	-10700.05	-1124.36	0.000	0.00	10695.04	PBHL

DESIGN TARGET DETAILS							
Name	TVD	+N/-S	+E/-W	Northing	Easting	Latitude	Longitude
LP/FTP - Millie Mile 13-24 Fed Com #201H L1r0	10150.00	-334.34	-1169.74	607188.03	759924.00	32.66720	-103.62300
LTP/PBHL - Millie Mile 13-24 Fed Com #201H L1r0	10150.00	-10700.05	-1124.36	596822.32	759969.38	32.63870	-103.62308
PP2 - Millie Mile 13-24 Fed Com #201H L1r0	10150.00	-4195.72	-1154.94	603326.65	759938.80	32.65658	-103.62304
PP3 - Millie Mile 13-24 Fed Com #201H L1r0	10150.00	-5515.67	-1149.88	602006.70	759943.86	32.65295	-103.62305

PROJECT DETAILS: Lea Co., NM (NAD83 NME)
Geodetic System: US State Plane 1983
Datum: North American Datum 1983
Ellipsoid: GRS 1980
Zone: New Mexico Eastern Zone
System Datum: Mean Sea Level

SITE DETAILS: Millie Mile 13-24 Fed Com Pad
Site Centre Northing: 607522.37
Easting: 761093.74
Positional Uncertainty: 0.00
Convergence: 0.39
Local North: Grid



Azimuths to Grid North
True North: -0.39°
Magnetic North: 5.85°

Magnetic Field
Strength: 47717.7nT
Dip Angle: 60.50°
Date: 7/3/2023

E.G.L. Resources Inc.

Millie Mile 13-24 Fed Com #201H
 Lea Co., NM (NAD83 NME)
 Job No. WT-23-***
 Lateral 1r0

E.G.L. Resources, Inc.
 A PBEX Resources Co.



SECTION DETAILS

Sec	MD	Inc	Azi	TVD	+N/-S	+E/-W	Dleg	VFace	Target	Annotation
55000.00	0.00	0.00	0.00	0.00	0.00	0.00	0.00	0.00	0.00	Build: 2°/100
6290.59	15.81	283.26	6280.60	24.87	-105.51	2.000	283.26	-25.33	0.00	Hold: 15.81° Inc. 283.26° Azm
9701.58	15.81	283.26	9562.52	238.08	-1010.14	0.000	0.00	-242.48	0.00	KOP: 10°/100° @ 9701.58° MD
10638.00	90.00	179.78	10150.00	-334.34	-1169.74	0.000	-102.99	329.23	0.00	LP/FTP - Millie Mile 13-24 Fed Com #201H L1r0
15819.37	90.00	179.78	10150.00	-5515.67	-1149.88	0.000	0.00	5510.60	0.00	LP/FTP - Millie Mile 13-24 Fed Com #201H L1r0
15822.49	90.00	179.72	10150.00	-5518.79	-1149.88	2.000	-90.00	5513.72	0.00	Turn: 2°/100
21003.81	90.00	179.72	10150.00	-10700.05	-1124.36	0.000	0.00	10695.04	0.00	Hold: 90.00° Inc. 179.72° Azm

DESIGN TARGET DETAILS

Name	+N/-S	+E/-W	Northing	Easting	Latitude	Longitude
LP/FTP - Millie Mile 13-24 Fed Com #201H L1r0	-334.34	-1169.74	607188.05	759924.00	32.66720	-103.62300
LTP/PBHL - Millie Mile 13-24 Fed Com #201H L1r0	-10700.05	-1124.36	596822.32	759969.38	32.63870	-103.62308
PP2 - Millie Mile 13-24 Fed Com #201H L1r0	-4195.72	-1154.94	603326.65	759938.80	32.65658	-103.62304
PP3 - Millie Mile 13-24 Fed Com #201H L1r0	-5515.67	-1149.88	602006.70	759943.86	32.65295	-103.62305

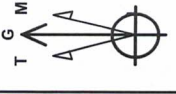
PROJECT DETAILS: Lea Co., NM (NAD83 NME)

Geodetic System: US State Plane 1983
 Datum: North American Datum 1983
 Ellipsoid: GRS 1980
 Zone: New Mexico Eastern Zone
 System Datum: Mean Sea Level

SITE DETAILS: Millie Mile 13-24 Fed Com Pad

Site Centre Northing: 607522.37
 Easting: 761093.74

Positional Uncertainty: 0.00
 Convergence: 0.39
 Local North: Grid



Azimuths to Grid North
 True North: -0.39°
 Magnetic North: 5.85°
 Magnetic Field
 Strength: 47717.7nT
 Dip Angle: 60.50°
 Date: 7/3/2023
 Model: MVHD

