

STATE OF NEW MEXICO
ENERGY, MINERALS AND NATURAL RESOURCES DEPARTMENT
OIL CONSERVATION DIVISION

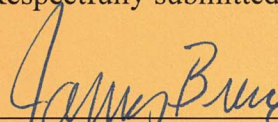
APPLICATION OF E.G.L. REOURCES,
INC. FOR COMPULSORY POOLING, LEA
COUNTY, NEW MEXICO.

Case No. 23330

NOTICE OF FILING ADDITIONAL EXHIBIT

E.G.L. Resources, Inc. hereby submits for filing Exhibit 3-G, the horizontal drilling plans..

Respectfully submitted,

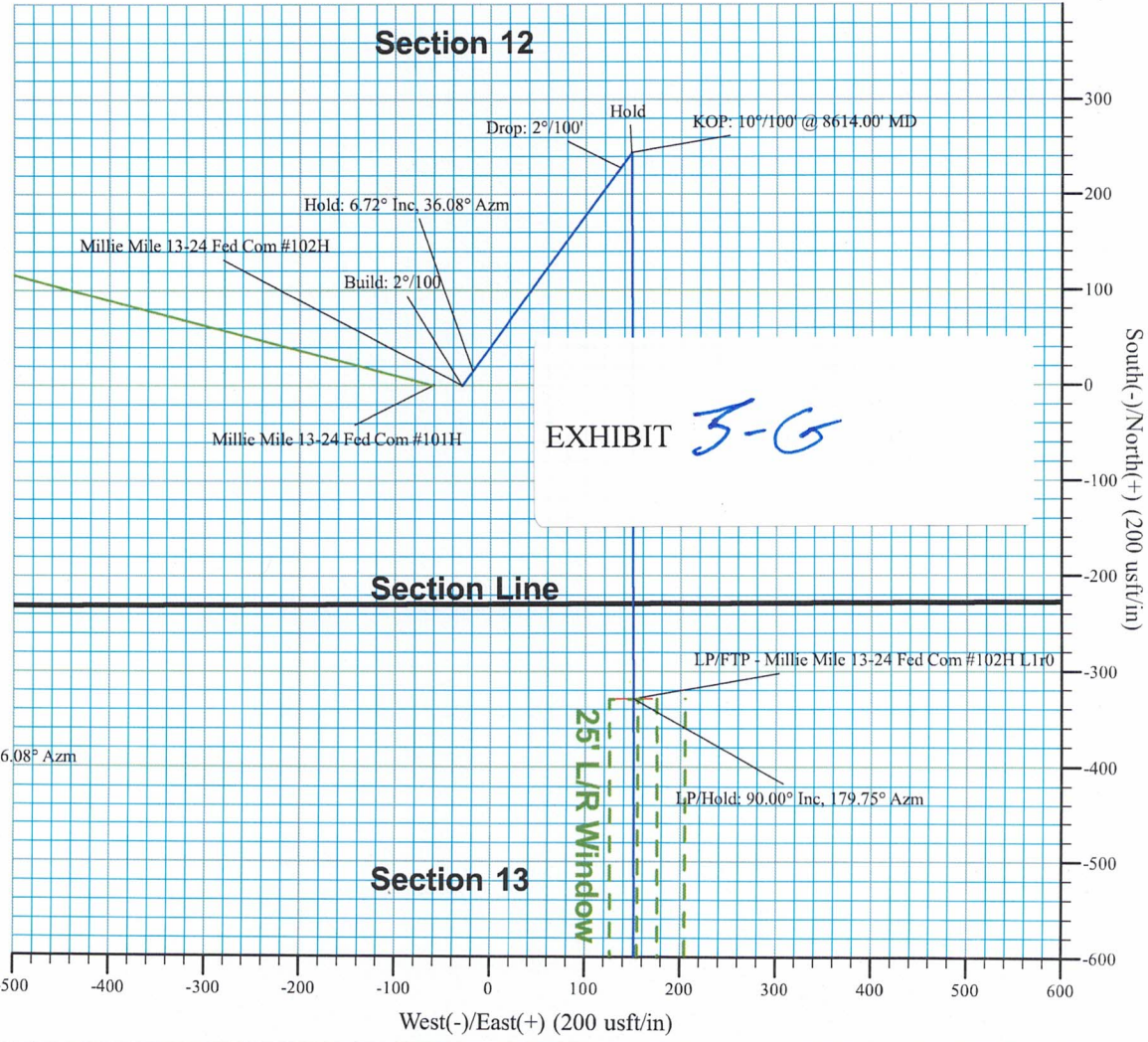
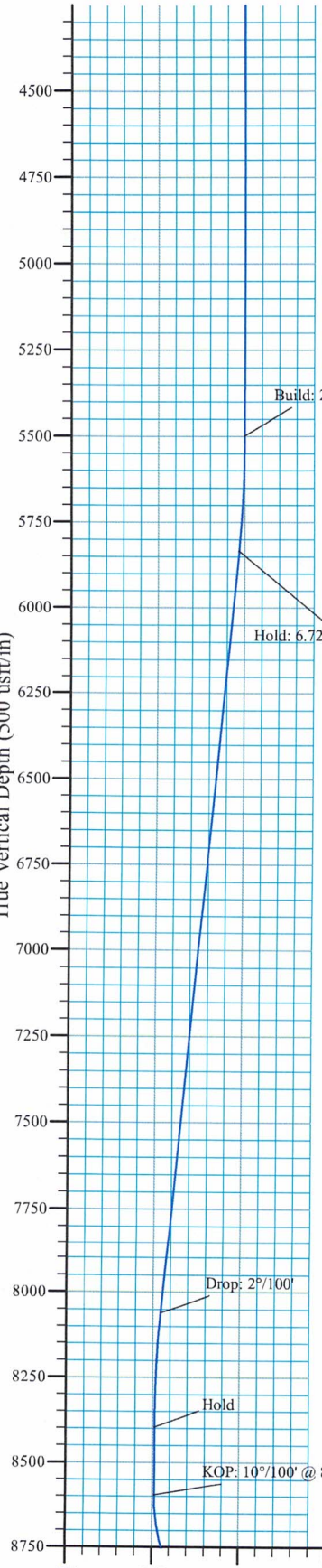


James Bruce
Post Office Box 1056
Santa Fe, New Mexico 87504
(505) 982-2043
jamesbruc@aol.com

Attorney for E.G.L. Resources, Inc.

E. G. L. Resources, Inc.
A PBEX Resources Co.

Millie Mile 13-24 Fed Com #102H
Lea Co., NM (NAD83 NME)
Job No. WT-23-***
Lateral 1r0



SECTION DETAILS										
Sec	MD	Inc	Azi	TVD	+N/-S	+E/-W	Dleg	TFace	V Sect	Annotation
1	0.00	0.00	0.00	0.00	-0.11	-30.00	0.000	0.00	0.00	
2	5500.00	0.00	0.00	5500.00	-0.11	-30.00	0.000	0.00	0.00	Build: 2°/100
3	5836.12	6.72	36.08	5835.35	15.81	-18.40	2.000	36.08	-15.87	Hold: 6.72° Inc, 36.08° Azm
4	8077.87	6.72	36.08	8061.69	227.89	136.14	0.000	0.00	-227.28	Drop: 2°/100'
5	8414.00	0.00	179.75	8397.04	243.81	147.74	2.000	180.00	-243.14	Hold
6	8614.00	0.00	179.75	8597.04	243.81	147.74	0.000	0.00	-243.14	KOP: 10°/100' @ 8614.00' MD
7	9514.00	90.00	179.75	9170.00	-329.14	150.25	10.000	0.00	329.81	LP/Hold: 90.00° Inc, 179.75° Azm
8	14696.25	90.00	179.75	9170.00	-5511.34	172.90	0.000	0.00	5512.06	PP2: 90.00° Inc, 179.75° Azm
9	19878.42	90.00	179.75	9170.00	-10693.46	195.62	0.000	0.00	10694.23	PBHL

DESIGN TARGET DETAILS							
Name	TVD	+N/-S	+E/-W	Northing	Easting	Latitude	Longitude
LP/FTP - Millie Mile 13-24 Fed Com #102H L1r0	9170.00	-329.14	150.25	607193.23	761243.99	32.66719	-103.61871
LTP/PBHL - Millie Mile 13-24 Fed Com #102H L1r0	9170.00	-10693.46	195.62	596828.91	761289.36	32.63870	-103.61879
PP2 - Millie Mile 13-24 Fed Com #102H L1r0	9170.00	-5511.34	172.90	602011.03	761266.64	32.65294	-103.61875

PROJECT DETAILS: Lea Co., NM (NAD83 NME)

Geodetic System: US State Plane 1983
Datum: North American Datum 1983
Ellipsoid: GRS 1980
Zone: New Mexico Eastern Zone

System Datum: Mean Sea Level

SITE DETAILS: Millie Mile 13-24 Fed Com Pad

Site Centre Northing: 607522.37
Easting: 761093.74

Positional Uncertainty: 0.00
Convergence: 0.39
Local North: Grid

Azimuths to Grid North
True North: -0.39°
Magnetic North: 5.85°

Magnetic Field
Strength: 4717.8nT
Dip Angle: 60.50°
Date: 7/3/2023

E.G.L. Resources Inc.

Millie Mile 13-24 Fed Com #102H
Lea Co., NM (NAD83 NME)
Job No. WT-23-***
Lateral 1R0

E. G. L. Resources, Inc.
A PBEX Resources Co.



SECTION DETAILS

Sec	MD	Inc	Azi	TVD	+N/-S	+E/-W	Dleg	VFace	Target	Annotation
5500.00	0.00	0.00	0.00	0.00	-0.11	-30.00	0.000	0.00	0.00	Build: 2°/100
5836.12	6.72	36.08	5835.35	15.81	-18.40	-15.87	0.000	0.00	0.00	Hold: 6.72° Inc, 179.75° Azm
8077.87	6.72	36.08	8061.69	227.89	136.14	-227.28	2.000	36.08	-15.87	Drop: 2°/100°
8414.00	0.00	179.75	8597.04	243.81	147.74	-243.14	0.000	180.00	-243.14	Hold
8614.00	0.00	179.75	8597.04	243.81	147.74	-243.14	0.000	180.00	-243.14	KOP: 10°/100° @ 8614.00' MD
9514.00	90.00	179.75	9170.00	-329.14	150.25	10.000	0.000	0.00	329.81	LP/FTP - Millie Mile 13-24 Fed Com #102H L1R0
14696.25	90.00	179.75	9170.00	-5511.34	172.90	0.000	0.000	0.00	5512.06	LP/FTP - Millie Mile 13-24 Fed Com #102H L1R0
19878.42	90.00	179.75	9170.00	-10693.46	195.62	0.000	0.000	0.00	10694.23	LP/PBHL - Millie Mile 13-24 Fed Com #102H L1R0

DESIGN TARGET DETAILS

Name	TVD	+N/-S	+E/-W	Northing	Easting	Latitude	Longitude
LP/FTP - Millie Mile 13-24 Fed Com #102H L1R0	9170.00	-329.14	150.25	607193.23	761243.99	32.66719	-103.61871
LP/PBHL - Millie Mile 13-24 Fed Com #102H L1R0	9170.00	-10693.46	195.62	596828.91	761289.36	32.63870	-103.61879
PP2 - Millie Mile 13-24 Fed Com #102H L1R0	9170.00	-5511.34	172.90	602011.03	761266.64	32.65294	-103.61875

PROJECT DETAILS: Lea Co., NM (NAD83 NME)

Geodetic System: US State Plane 1983
Datum: North American Datum 1983
Ellipsoid: GRS 1980
Zone: New Mexico Eastern Zone

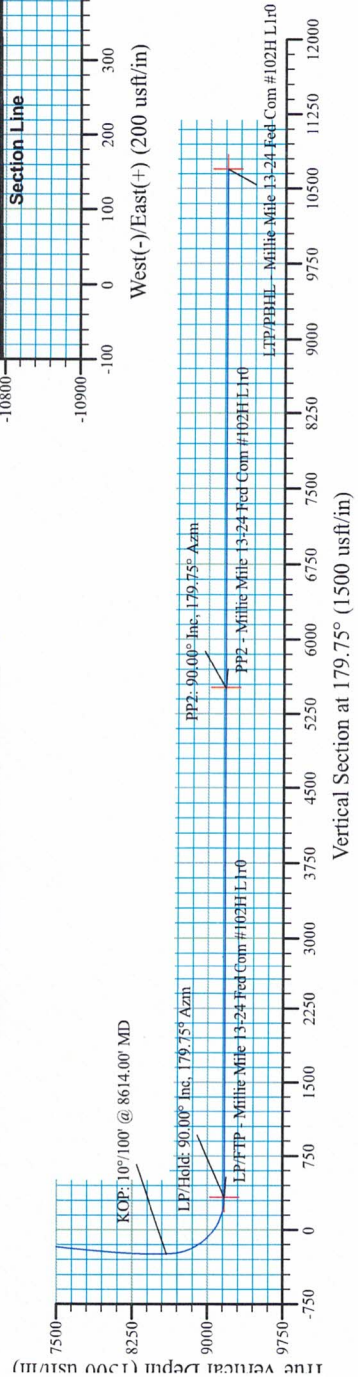
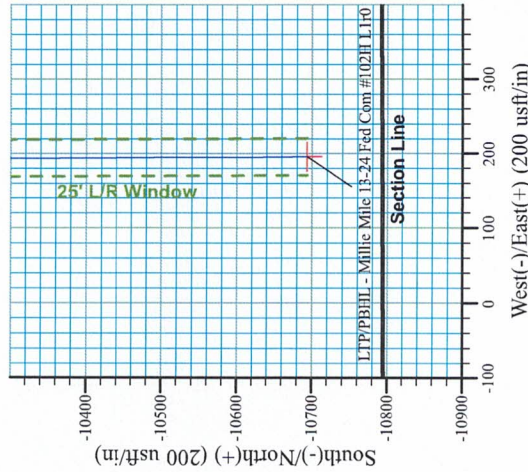
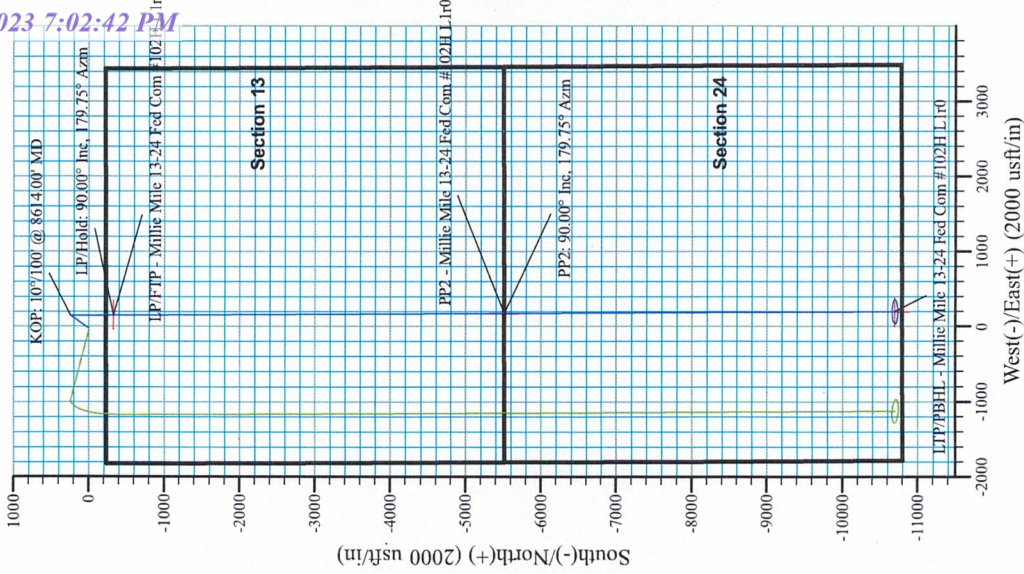
System Datum: Mean Sea Level

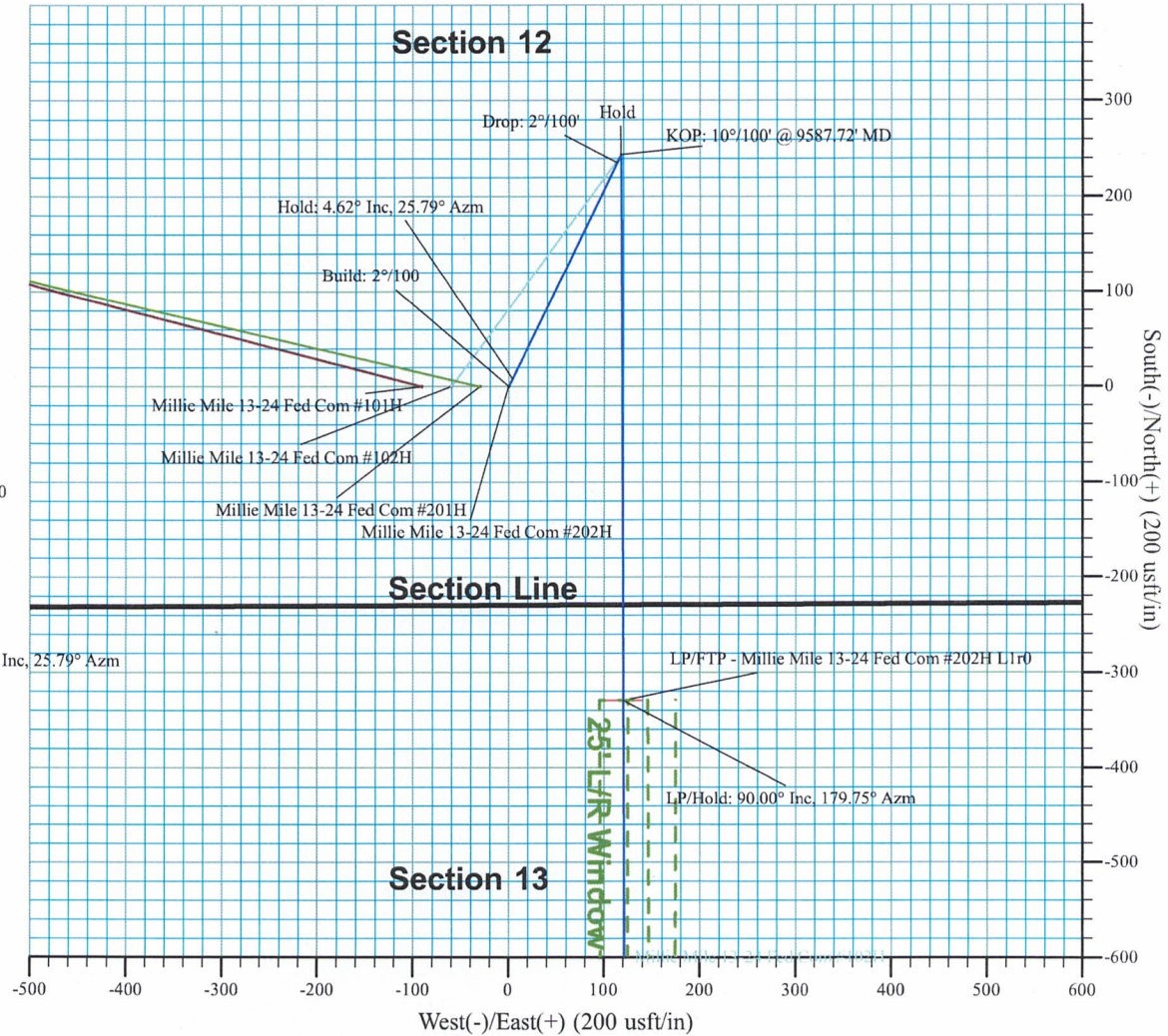
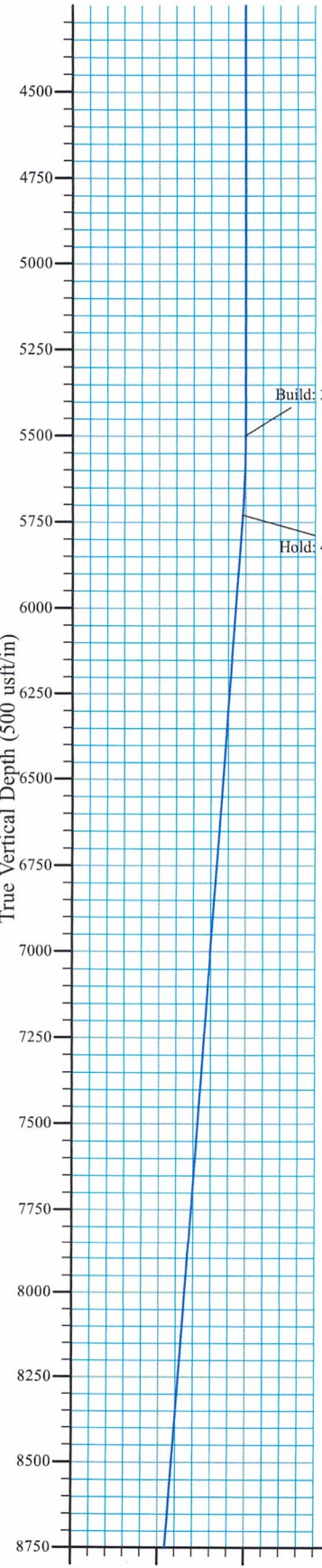
Site Centre Northing: 607522.37
Easting: 761093.74

Positional Uncertainty: 0.00
Convergence: 0.39
Local North: Grid

Azinuths to Grid North
True North: -0.39°
Magnetic North: 5.85°

Magnetic Field
Strength: 47717.8nT
Dip Angle: 60.50°
Date: 7/3/2023
Model: MVVD





SECTION DETAILS										
Sec	MD	Inc	Azi	TVD	+N/-S	+E/-W	Dleg	TFace	VSect	Annotation
1	0.00	0.00	0.00	0.00	0.00	0.00	0.000	0.00	0.00	
2	5500.00	0.00	0.00	5500.00	0.00	0.00	0.000	0.00	0.00	Build: 2°/100
3	5731.25	4.62	25.79	5731.00	8.40	4.06	2.000	25.79	-8.38	Hold: 4.62° Inc, 25.79° Azm
4	8856.47	4.62	25.79	8846.05	235.30	113.68	0.000	0.00	-234.80	Drop: 2°/100'
5	9087.72	0.00	179.75	9077.04	243.70	117.74	2.000	180.00	-243.19	Hold
6	9587.72	0.00	179.75	9577.04	243.70	117.74	0.000	0.00	-243.19	KOP: 10°/100' @ 9587.72' MD
7	10487.72	90.00	179.75	10150.00	-329.25	120.25	10.000	0.00	329.77	LP/Hold: 90.00° Inc, 179.75° Azm
8	15669.97	90.00	179.75	10150.00	-5511.45	142.90	0.000	0.00	5512.02	PP2: 90.00° Inc, 179.75° Azm
9	20852.14	90.00	179.75	10150.00	-10693.57	165.62	0.000	0.00	10694.19	PBHL

DESIGN TARGET DETAILS							
Name	TVD	+N/-S	+E/-W	Northing	Easting	Latitude	Longitude
LP/FTP - Millie Mile 13-24 Fed Com #202H L1r0	10150.00	-329.25	120.25	607193.23	761243.99	32.66719	-103.61871
LTP/PBHL - Millie Mile 13-24 Fed Com #202H L1r0	10150.00	-10693.57	165.62	596828.91	761289.36	32.63870	-103.61879
PP2 - Millie Mile 13-24 Fed Com #202H L1r0	10150.00	-5511.45	142.90	602011.03	761266.64	32.65294	-103.61875

PROJECT DETAILS: Lea Co., NM (NAD83 NME)

Geodetic System: US State Plane 1983
Datum: North American Datum 1983
Ellipsoid: GRS 1980
Zone: New Mexico Eastern Zone

System Datum: Mean Sea Level

SITE DETAILS: Millie Mile 13-24 Fed Com Pad

Site Centre Northing: 607522.37
Easting: 761093.74

Positional Uncertainty: 0.00
Convergence: 0.39
Local North: Grid

Azimuths to Grid North
True North: -0.39°
Magnetic North: 5.85°

Magnetic Field
Strength: 47717.7nT
Dip Angle: 60.50°
Date: 7/3/2023

E.G.L. Resources Inc.

Millie Mile 13-24 Fed Com #202H
Lea Co., NM (NAD83 NME)
Job No. WT-23-***
Lateral 1r0

E.G.L. Resources, Inc.
A PBEX Resources Co.



SECTION DETAILS

Sec	MD	Inc	Adj	TVD	+N/-S	+E/-W	Dleg	VSec	Target	Annotation
1	0.00	0.00	0.00	0.00	0.00	0.00	0.00	0.00	0.00	Build: 2'±/100
2	5500.00	0.00	0.00	5500.00	0.00	0.00	0.00	0.00	0.00	Hold: 4.62' Inc., 25.79° Azm
3	5731.25	4.62	25.79	5731.00	0.00	4.06	2.000	25.79	8.38	Hold: 2'±/100
4	8856.47	4.62	25.79	8846.05	235.30	113.68	0.000	0.00	-234.80	KOP: 10°/100' @ 9587.72' MD
5	9087.72	0.00	179.75	9077.04	243.70	117.74	2.000	180.00	-243.19	LP/FTP - Millie Mile 13-24 Fed Com #202H L1r0
6	9587.72	0.00	179.75	9577.04	243.70	117.74	0.000	0.00	-243.19	LP/FTP - Millie Mile 13-24 Fed Com #202H L1r0
7	10487.72	90.00	179.75	10150.00	-329.25	120.25	10.000	0.00	5512.02	PP2 - Millie Mile 13-24 Fed Com #202H L1r0
8	15669.97	90.00	179.75	10150.00	-5511.45	145.90	0.000	0.00	10694.19	LTP/PBHL - Millie Mile 13-24 Fed Com #202H L1r0
9	20852.14	90.00	179.75	10150.00	-10693.57	165.62	0.000	0.00	10694.19	PBHL

DESIGN TARGET DETAILS

Name	+E/-W	+N/-S	+E/-W	Northing	Easting	Latitude	Longitude
LP/FTP - Millie Mile 13-24 Fed Com #202H L1r0	-329.25	120.25	607193.23	761243.99	32.66719	-103.61871	
LTP/PBHL - Millie Mile 13-24 Fed Com #202H L1r0	-10693.57	145.90	596828.91	761289.36	32.63870	-103.61879	
PP2 - Millie Mile 13-24 Fed Com #202H L1r0	-5511.45	142.90	602011.03	761266.64	32.65294	-103.61875	

PROJECT DETAILS: Lea Co., NM (NAD83 NME)
Geodetic System: US State Plane 1983
Datum: North American Datum 1983
Ellipsoid: GRS 1980
Zone: New Mexico Eastern Zone
System Datum: Mean Sea Level

SITE DETAILS: Millie Mile 13-24 Fed Com Pad
Site Centre Northing: 607522.37
Easting: 761093.74
Positional Uncertainty: 0.00
Convergence: 0.39
Local North: Grid

Azimuths to Grid North
True North: -0.39°
Magnetic North: 5.85°
Magnetic Field
Strength: 47717.7nT
Dip Angle: 60.50°
Date: 7/3/2023
Model: MV/HD

