

STATE OF NEW MEXICO
ENERGY, MINERALS AND NATURAL RESOURCES DEPARTMENT
OIL CONSERVATION DIVISION

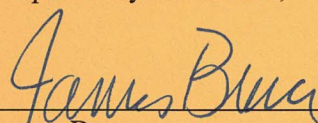
APPLICATION OF E.G.L. REOURCES,
INC. FOR COMPULSORY POOLING, LEA
COUNTY, NEW MEXICO.

Case No. 23331

NOTICE OF FILING ADDITIONAL EXHIBIT

E.G.L. Resources, Inc. hereby submits for filing Exhibit 3-G, the horizontal drilling plans..

Respectfully submitted,

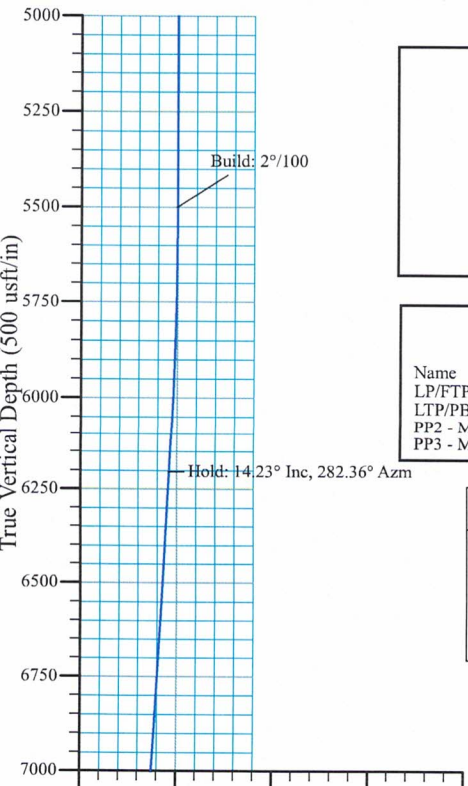
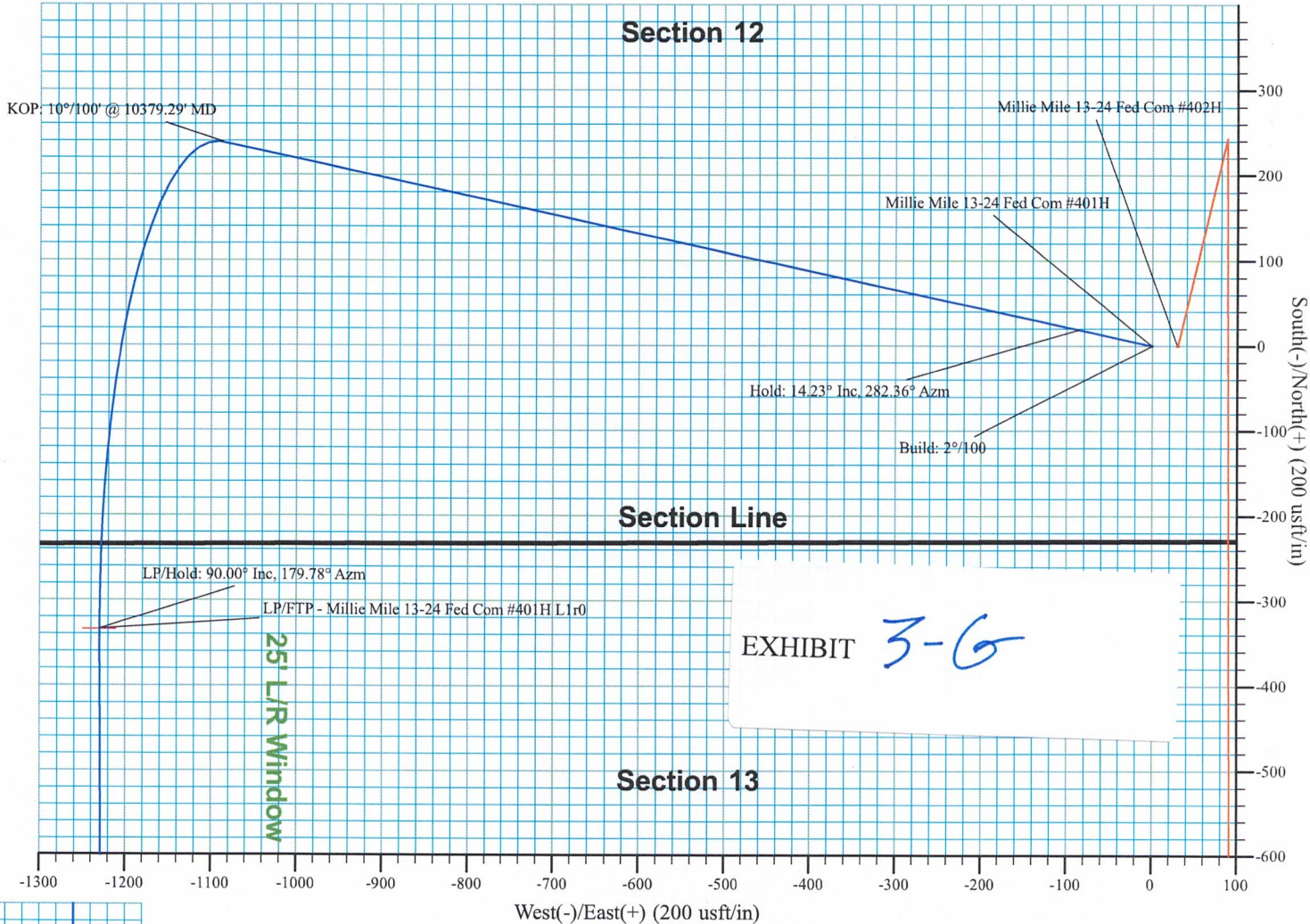


James Bruce
Post Office Box 1056
Santa Fe, New Mexico 87504
(505) 982-2043
jamesbruc@aol.com

Attorney for E.G.L. Resources, Inc.

E. G. L. Resources, Inc.
A PBEX Resources Co.

Millie Mile 13-24 Fed Com #401H
Lea Co., NM (NAD83 NME)
Job No. WT-23-***
Lateral 1r0



SECTION DETAILS										
Sec	MD	Inc	Azi	TVD	+N/-S	+E/-W	Dleg	TFace	V Sect	Annotation
1	0.00	0.00	0.00	0.00	0.00	0.00	0.000	0.00	0.00	
2	5500.00	0.00	0.00	5500.00	0.00	0.00	0.000	0.00	0.00	Build: 2°/100
3	6211.67	14.23	282.36	6204.37	18.82	-85.91	2.000	282.36	-19.20	Hold: 14.23° Inc, 282.36° Azm
4	10379.29	14.23	282.36	10244.06	238.12	-1086.87	0.000	0.00	-242.86	KOP: 10°/100' @ 10379.29' MD
5	11309.98	90.00	179.78	10830.00	-334.57	-1229.74	10.000	-102.20	329.20	LP/hold: 90.00° Inc, 179.78° Azm
6	16491.35	90.00	179.78	10830.00	-5515.90	-1209.88	0.000	0.00	5510.57	Turn: 2°/100
7	16494.47	90.00	179.72	10830.00	-5519.02	-1209.87	2.000	-90.00	5513.69	Hold: 90.00° Inc, 179.72° Azm
8	21675.79	90.00	179.72	10830.00	-10700.28	-1184.36	0.000	0.00	10695.01	PBHL

DESIGN TARGET DETAILS							
Name	TVD	+N/-S	+E/-W	Northing	Easting	Latitude	Longitude
LP/FTP - Millie Mile 13-24 Fed Com #401H L1r0	10830.00	-334.57	-1229.74	607188.03	759924.00	32.66720	-103.62300
LTP/PBHL - Millie Mile 13-24 Fed Com #401H L1r0	10830.00	-10700.28	-1184.36	596822.32	759969.38	32.63870	-103.62308
PP2 - Millie Mile 13-24 Fed Com #401H L1r0	10830.00	-4195.95	-1214.94	603326.65	759938.80	32.65658	-103.62304
PP3 - Millie Mile 13-24 Fed Com #401H L1r0	10830.00	-5515.90	-1209.88	602006.70	759943.86	32.65295	-103.62305

PROJECT DETAILS: Lea Co., NM (NAD83 NME)	
Geodetic System:	US State Plane 1983
Datum:	North American Datum 1983
Ellipsoid:	GRS 1980
Zone:	New Mexico Eastern Zone
System Datum:	Mean Sea Level

SITE DETAILS: Millie Mile 13-24 Fed Com Pad	
Site Centre Northing:	607522.37
Easting:	761093.74
Positional Uncertainty:	0.00
Convergence:	0.39
Local North:	Grid



Azimuths to Grid North
True North: -0.39°
Magnetic North: 5.85°

Magnetic Field
Strength: 47717.6nT
Dip Angle: 60.50°
Date: 7/3/2023

E.G.L. Resources Inc.

Millie Mile 13-24 Fed Com #401H
 Lea Co., NM (NAD83 NME)
 Job No. WT-23-***
 Lateral 1r0

E.G.L. Resources, Inc.
 A PBEX Resources Co.



SECTION DETAILS										
Sec	MD	Inc	Azi	+N/-S	+E/-W	TVD	+N/-S	+E/-W	Target	Annotation
1	5500.00	0.00	0.00	0.00	0.00	0.00	0.00	0.00	0.00	Build: 2°/100
2	6211.67	14.23	282.36	6204.37	18.82	-85.91	0.00	0.00	0.00	KOP: 10°/100 @ 10379.29° MD
3	11309.98	90.00	179.78	10830.06	33.12	-1086.87	0.00	0.00	-192.86	LP/FTP - Millie Mile 13-24 Fed Com #401H L1r0
4	16494.47	90.00	179.72	10830.00	-5515.90	-1209.88	0.00	0.00	-5513.69	PP3 - Millie Mile 13-24 Fed Com #401H L1r0
5	21675.79	90.00	179.72	10830.00	-10700.28	-1184.36	0.00	0.00	10695.01	LTP/PBHL - Millie Mile 13-24 Fed Com #401H L1r0

DESIGN TARGET DETAILS			
Name	TVD	+N/-S	+E/-W
LP/FTP - Millie Mile 13-24 Fed Com #401H L1r0	10830.00	-334.57	-1229.74
LTP/PBHL - Millie Mile 13-24 Fed Com #401H L1r0	10830.00	-10700.28	-1184.36
PP2 - Millie Mile 13-24 Fed Com #401H L1r0	10830.00	-4195.95	603326.65
PP3 - Millie Mile 13-24 Fed Com #401H L1r0	10830.00	-5515.90	602006.70

PROJECT DETAILS: Lea Co., NM (NAD83 NME)	
Geodetic System:	US State Plane 1983
Datum:	North American Datum 1983
Ellipsoid:	GRS 1980
Zone:	New Mexico Eastern Zone
System Datum:	Mean Sea Level

SITE DETAILS: Millie Mile 13-24 Fed Com Pad	
Site Centre Northing:	607522.37
Site Centre Easting:	761095.74
Positional Uncertainty:	0.00
Convergence:	0.39
Local North:	Grid

Azimuths to Grid North
 True North: -0.39°
 Magnetic North: 5.85°
 Magnetic Field Strength: 47717.6nT
 Dip Angle: 60.50°
 Date: 7/3/2023
 Model: MVHD

