

STATE OF NEW MEXICO  
ENERGY, MINERALS AND NATURAL RESOURCES DEPARTMENT  
OIL CONSERVATION DIVISION

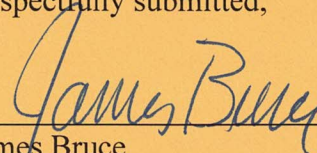
APPLICATION OF E.G.L. REOURCES,  
INC. FOR COMPULSORY POOLING, LEA  
COUNTY, NEW MEXICO.

Case No. 23332

NOTICE OF FILING ADDITIONAL EXHIBIT

E.G.L. Resources, Inc. hereby submits for filing Exhibit 3-G, the horizontal drilling plans..

Respectfully submitted,



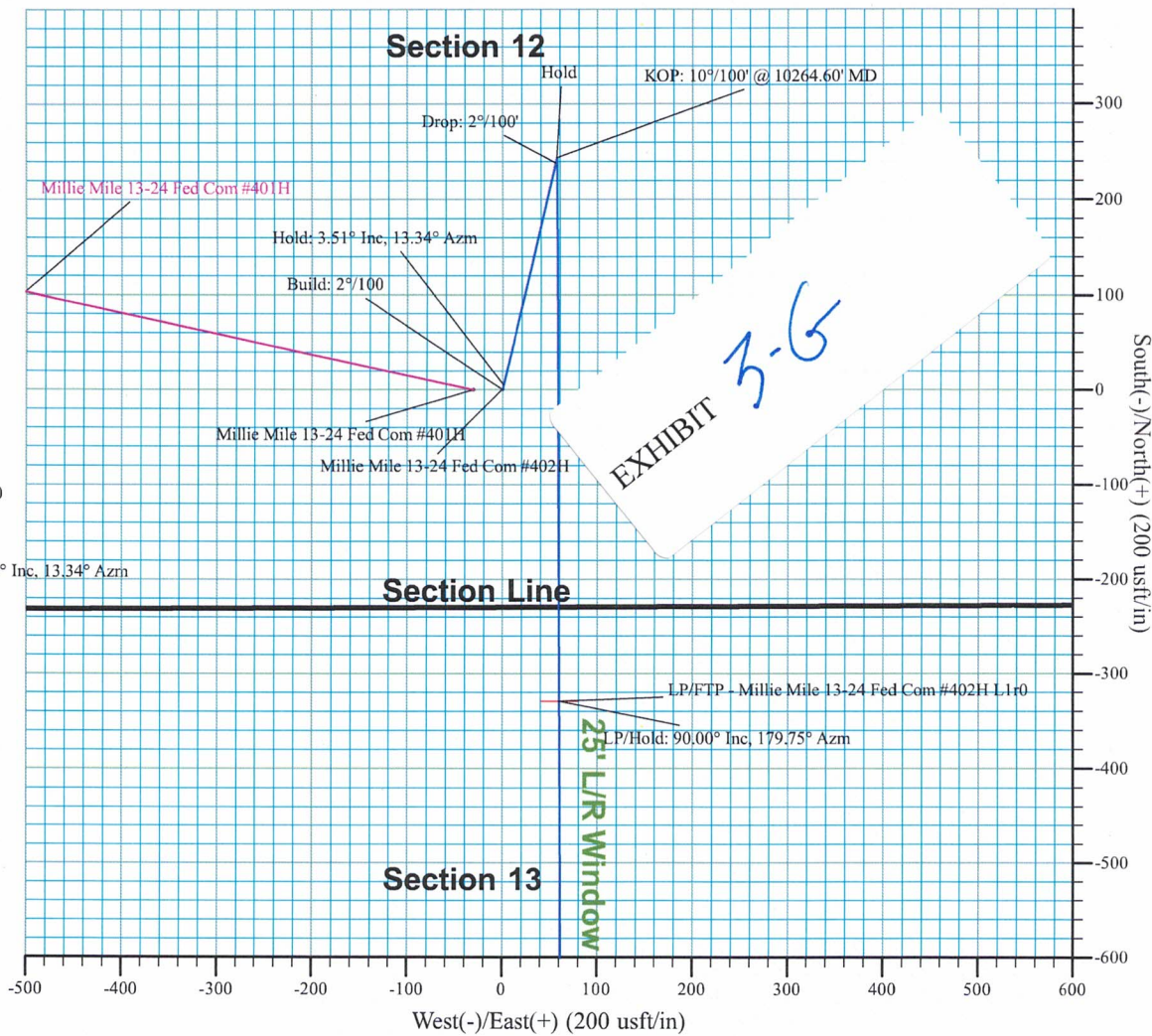
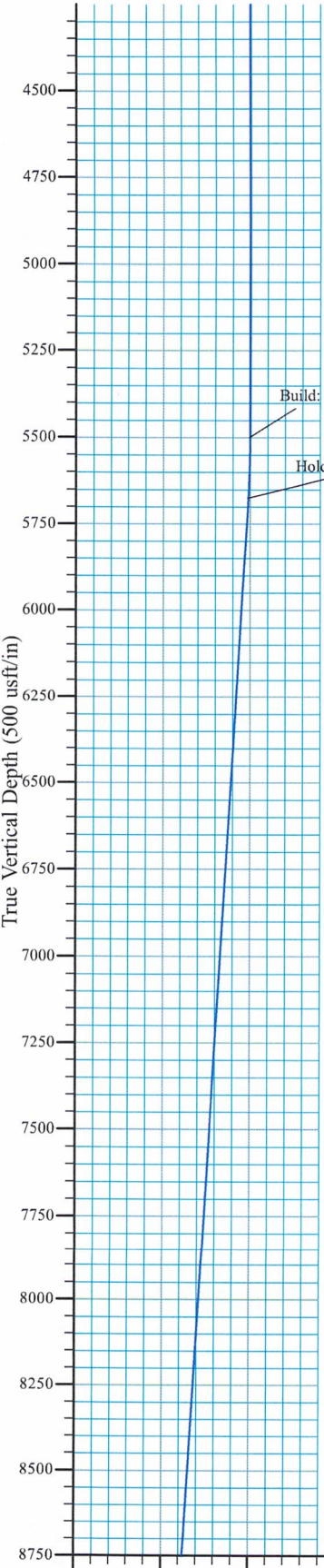
---

James Bruce  
Post Office Box 1056  
Santa Fe, New Mexico 87504  
(505) 982-2043  
*jamesbruc@aol.com*

Attorney for E.G.L. Resources, Inc.

E. G. L. Resources, Inc.  
A PBEX Resources Co.

Millie Mile 13-24 Fed Com #402H  
Lea Co., NM (NAD83 NME)  
Job No. WT-23-\*\*\*  
Lateral 1r0



SECTION DETAILS										
Sec	MD	Inc	Azi	TVD	+N/-S	+E/-W	Dleg	TFace	VSect	Annotation
1	0.00	0.00	0.00	0.00	0.00	0.00	0.000	0.00	0.00	
2	5500.00	0.00	0.00	5500.00	0.00	0.00	0.000	0.00	0.00	Build: 2°/100
3	5675.41	3.51	13.34	5675.30	5.22	1.24	2.000	13.34	-5.22	Hold: 3.51° Inc, 13.34° Azm
4	9589.19	3.51	13.34	9581.74	238.25	56.50	0.000	0.00	-238.00	Drop: 2°/100'
5	9764.60	0.00	179.75	9757.04	243.47	57.74	2.000	180.00	-243.22	Hold
6	10264.60	0.00	179.75	10257.04	243.47	57.74	0.000	0.00	-243.22	KOP: 10°/100' @ 10264.60' MD
7	11164.60	90.00	179.75	10830.00	-329.48	60.25	10.000	0.00	329.74	LP/FTP - Millie Mile 13-24 Fed Com #402H L1r0
8	16346.85	90.00	179.75	10830.00	-5511.68	82.90	0.000	0.00	5511.99	LP/Hold: 90.00° Inc, 179.75° Azm
9	21529.01	90.00	179.75	10830.00-10693.80	105.62	0.000	0.000	0.00	10694.16	PP2: 90.00° Inc, 179.75° Azm PBHL

DESIGN TARGET DETAILS							
Name	TVD	+N/-S	+E/-W	Northing	Easting	Latitude	Longitude
LP/FTP - Millie Mile 13-24 Fed Com #402H L1r0	10830.00	-329.48	60.25	607193.23	761243.99	32.66719	-103.61871
LTP/PBHL - Millie Mile 13-24 Fed Com #402H L1r0	10830.00	-10693.80	105.62	596828.91	761289.36	32.63870	-103.61879
PP2 - Millie Mile 13-24 Fed Com #402H L1r0	10830.00	-5511.68	82.90	602011.03	761266.64	32.65294	-103.61875

**PROJECT DETAILS:** Lea Co., NM (NAD83 NME)

Geodetic System: US State Plane 1983  
Datum: North American Datum 1983  
Ellipsoid: GRS 1980  
Zone: New Mexico Eastern Zone

System Datum: Mean Sea Level

**SITE DETAILS:** Millie Mile 13-24 Fed Com Pad

Site Centre Northing: 607522.37  
Easting: 761093.74

Positional Uncertainty: 0.00  
Convergence: 0.39  
Local North: Grid



Azimuths to Grid North  
True North: -0.39°  
Magnetic North: 5.85°

Magnetic Field  
Strength: 47717.5nT  
Dip Angle: 60.50°  
Date: 7/3/2023

# E.G.L. Resources Inc.

Millie Mile 13-24 Fed Com #402H  
Lea Co., NM (NAD83 NME)  
Job No. WT-23-\*\*\*  
Lateral 1r0



**E.G.L. Resources, Inc.**  
A PBEX Resources Co.

SECTION DETAILS									
Sec	MD	Inc	Azi	+N/-S	+E/-W	Dleg	Vfsect	Target	Annotation
1	0.00	0.00	0.00	0.00	0.00	0.000	0.00	0.00	Build: 2°/100
2	5000.00	9.00	13.34	9581.70	238.52	0.000	0.00	0.00	Hold: 3.51° Inc, 13.34° Azm
3	9889.19	3.51	13.34	9581.70	238.52	2.000	13.34	38.22	Drop: 2°/100°
4	9764.60	0.00	179.75	9757.04	243.47	2.000	180.00	-243.22	KOP: 10°/100° @ 10264.60' MD
5	1164.60	0.00	179.75	10257.04	243.47	0.000	0.00	-243.22	LP/FTP - Millie Mile 13-24 Fed Com #402H L1r0
6	1164.60	0.00	179.75	10830.00	-329.48	10.000	0.00	329.74	LP/Hold: 90.00° Inc, 179.75° Azm
7	16346.85	90.00	179.75	10830.00	-329.48	0.000	0.00	5511.99	PP2 - Millie Mile 13-24 Fed Com #402H L1r0
8	21529.01	90.00	179.75	10830.00	-10693.80	0.000	0.00	10694.16	PP2 - 90.00° Inc, 179.75° Azm
9						0.000	0.00	10694.16	LTP/PBHL - Millie Mile 13-24 Fed Com #402H L1r0
						0.000	0.00	10694.16	PBHL

DESIGN TARGET DETAILS			
Name	TVD	+N/-S	+E/-W
LP/FTP - Millie Mile 13-24 Fed Com #402H L1r0	10830.00	-329.48	60.25
LTP/PBHL - Millie Mile 13-24 Fed Com #402H L1r0	10830.00	-10693.80	105.62
PP2 - Millie Mile 13-24 Fed Com #402H L1r0	10830.00	-5511.68	82.90

**PROJECT DETAILS:** Lea Co, NM (NAD83 NME)  
Geodetic System: US State Plane 1983  
Datum: North American Datum 1983  
Ellipsoid: GRS 1980  
Zone: New Mexico Eastern Zone  
System Datum: Mean Sea Level

**SITE DETAILS:** Millie Mile 13-24 Fed Com Pad  
Site Centre Northing: 607522.37  
Easting: 761093.74  
Positional Uncertainty: 0.00  
Convergence: 0.39  
Local North: Grid

