

STATE OF NEW MEXICO  
ENERGY, MINERALS AND NATURAL RESOURCES DEPARTMENT  
OIL CONSERVATION DIVISION

APPLICATION OF MEWBOURNE OIL  
COMPANY FOR COMPULSORY POOLING,  
ETC., EDDY COUNTY, NEW MEXICO.

Case No. 23445

NOTICE OF FILING ADDITIONAL EXHIBITS

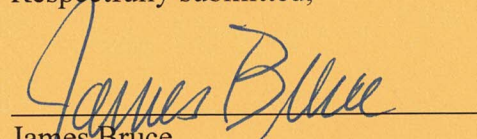
Mewbourne Oil Company submits for filing the following:

Supplemental Exhibit 2-A, containing revised C-102s.

Revised Exhibit 4, the affidavit of certified notice, containing all certified material received to date.

Exhibit 7, the certified notice spreadsheet.

Respectfully submitted,



James Bruce  
Post Office Box 1056  
Santa Fe, New Mexico 87504  
(505) 982-2043  
[jamesbruc@aol.com](mailto:jamesbruc@aol.com)

Attorney for Mewbourne Oil Company

District I  
 1625 N. French Dr., Hobbs, NM 88240  
 Phone: (575) 393-6161 Fax: (575) 393-0720  
 District II  
 811 S. First St., Artesia, NM 88210  
 Phone: (575) 748-1283 Fax: (575) 748-9720  
 District III  
 1000 Rio Brazos Road, Aztec, NM 87410  
 Phone: (505) 334-6178 Fax: (505) 334-6170  
 District IV  
 1220 S. St. Francis Dr., Santa Fe, NM 87505  
 Phone: (505) 476-3460 Fax: (505) 476-3462

State of New Mexico  
 Energy, Minerals & Natural Resources Department  
 OIL CONSERVATION DIVISION  
 1220 South St. Francis Dr.  
 Santa Fe, NM 87505

Form C-102  
 Revised August 1, 2011  
 Submit one copy to appropriate  
 District Office

AMENDED REPORT

WELL LOCATION AND ACREAGE DEDICATION PLAT

<sup>1</sup> API Number <b>30-015-53452</b>		<sup>2</sup> Pool Code <b>98220</b>		<sup>3</sup> Pool Name <b>PURPLE SAGE; WOLFCAMP</b>	
<sup>4</sup> Property Code <b>319622</b>		<sup>5</sup> Property Name <b>FULLER 14/11 W1ED FED COM</b>			<sup>6</sup> Well Number <b>1H</b>
<sup>7</sup> OGRID NO. <b>14744</b>		<sup>8</sup> Operator Name <b>MEWBOURNE OIL COMPANY</b>			<sup>9</sup> Elevation <b>2940'</b>

<sup>10</sup> Surface Location

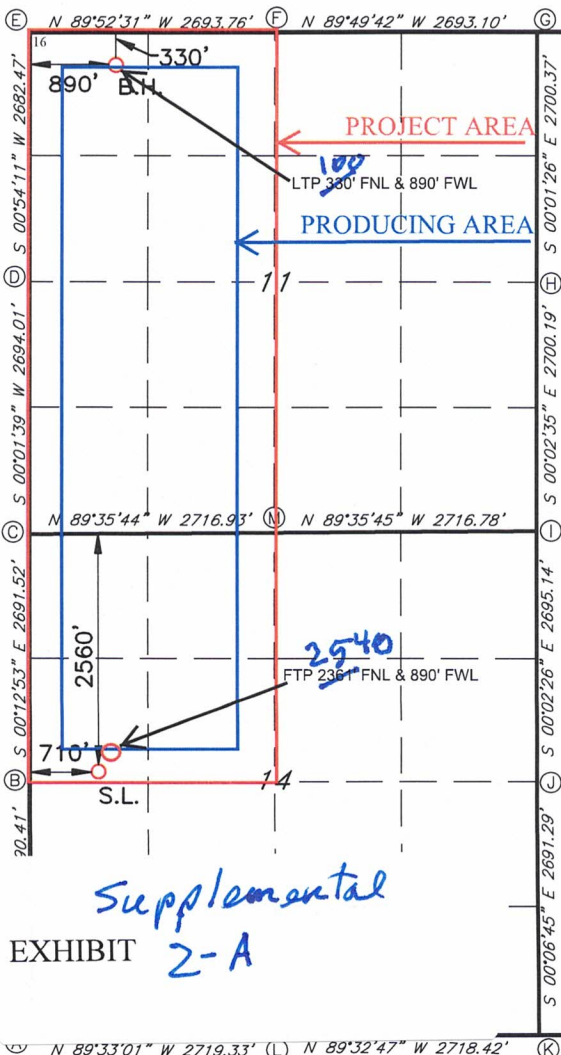
UL or lot no.	Section	Township	Range	Lot Idn	Feet from the	North/South line	Feet From the	East/West line	County
<b>E</b>	<b>14</b>	<b>26S</b>	<b>29E</b>		<b>2560</b>	<b>NORTH</b>	<b>710</b>	<b>WEST</b>	<b>EDDY</b>

<sup>11</sup> Bottom Hole Location If Different From Surface

UL or lot no.	Section	Township	Range	Lot Idn	Feet from the	North/South line	Feet from the	East/West line	County
<b>D</b>	<b>11</b>	<b>26S</b>	<b>29E</b>		<b>100</b> <del>330</del>	<b>NORTH</b>	<b>890</b>	<b>WEST</b>	<b>EDDY</b>

<sup>12</sup> Dedicated Acres <b>480</b>	<sup>13</sup> Joint or Infill	<sup>14</sup> Consolidation Code	<sup>15</sup> Order No.
---	-------------------------------	----------------------------------	-------------------------

No allowable will be assigned to this completion until all interest have been consolidated or a non-standard unit has been approved by the division.



**GEODETIC DATA**  
 NAD 83 GRID - NM EAST  
**SURFACE LOCATION**  
 N: 379355.7 - E: 656776.5  
 LAT: 32.0423814° N  
 LONG: 103.9607647° W  
**BOTTOM HOLE**  
 N: 386963.9 - E: 656985.1  
 LAT: 32.0632936° N  
 LONG: 103.9600066° W  
**CORNER DATA**  
 NAD 83 GRID - NM EAST  
 A: FOUND BRASS CAP "1940"  
 N: 376539.9 - E: 656060.1  
 B: FOUND BRASS CAP "1940"  
 N: 379229.8 - E: 656067.0  
 C: FOUND BRASS CAP "1940"  
 N: 381920.7 - E: 656056.9  
 D: FOUND BRASS CAP "1940"  
 N: 384614.1 - E: 656058.2  
 E: CALCULATED CORNER  
 N: 387295.7 - E: 656100.5  
 F: FOUND BRASS CAP "1940"  
 N: 387289.8 - E: 658793.7  
 G: FOUND BRASS CAP "1940"  
 N: 387281.8 - E: 661486.2  
 H: FOUND BRASS CAP "1940"  
 N: 384582.0 - E: 661487.3  
 I: FOUND BRASS CAP "1940"  
 N: 381882.4 - E: 661489.4  
 J: FOUND BRASS CAP "1940"  
 N: 379187.8 - E: 661491.3  
 K: FOUND BRASS CAP "1940"  
 N: 376497.1 - E: 661496.5  
 L: FOUND BRASS CAP "1940"  
 N: 376518.6 - E: 658778.8  
 M: FOUND BRASS CAP "1940"  
 N: 381901.5 - E: 658773.2

<sup>17</sup> OPERATOR CERTIFICATION

I hereby certify that the information contained herein is true and complete to the best of my knowledge and belief, and that this organization either owns a working interest or unleased mineral interest in the land including the proposed bottom hole location or has a right to drill this well at this location pursuant to a contract with an owner of such a mineral or working interest, or to a voluntary pooling agreement or a compulsory pooling order heretofore entered by the division.

*Bradley Bishop* 11/10/21  
 Signature Date  
**BRADLEY BISHOP**  
 Printed Name  
**BBISHOP@MEWBOURNE.COM**  
 E-mail Address

<sup>18</sup> SURVEYOR CERTIFICATION

I hereby certify that the well location shown on this plat was plotted from field notes of actual surveys made by me or under my supervision, and that the same is true and correct to the best of my belief.

**08/02/2021**

Date of Survey  
 Signature and Seal of Professional Surveyor



**19680**  
 Certificate Number

District I  
 1625 N. French Dr., Hobbs, NM 88240  
 Phone: (575) 393-6161 Fax: (575) 393-0720  
 District II  
 811 S. First St., Artesia, NM 88210  
 Phone: (575) 748-1283 Fax: (575) 748-9720  
 District III  
 1000 Rio Brazos Road, Aztec, NM 87410  
 Phone: (505) 334-6178 Fax: (505) 334-6170  
 District IV  
 1220 S. St. Francis Dr., Santa Fe, NM 87505  
 Phone: (505) 476-3460 Fax: (505) 476-3462

State of New Mexico  
 Energy, Minerals & Natural Resources Department  
**OIL CONSERVATION DIVISION**  
 1220 South St. Francis Dr.  
 Santa Fe, NM 87505

Form C-102  
 Revised August 1, 2011  
 Submit one copy to appropriate  
 District Office

AMENDED REPORT

**WELL LOCATION AND ACREAGE DEDICATION PLAT**

<sup>1</sup> API Number <b>30-015-53451</b>		<sup>2</sup> Pool Code <b>98220</b>		<sup>3</sup> Pool Name <b>PURPLE SAGE; WOLFCAMP</b>	
<sup>4</sup> Property Code <b>319622</b>		<sup>5</sup> Property Name <b>FULLER 14/11 WIED FED COM</b>			<sup>6</sup> Well Number <b>2H</b>
<sup>7</sup> OGRID NO. <b>14744</b>		<sup>8</sup> Operator Name <b>MEWBOURNE OIL COMPANY</b>			<sup>9</sup> Elevation <b>2940'</b>

<sup>10</sup> Surface Location

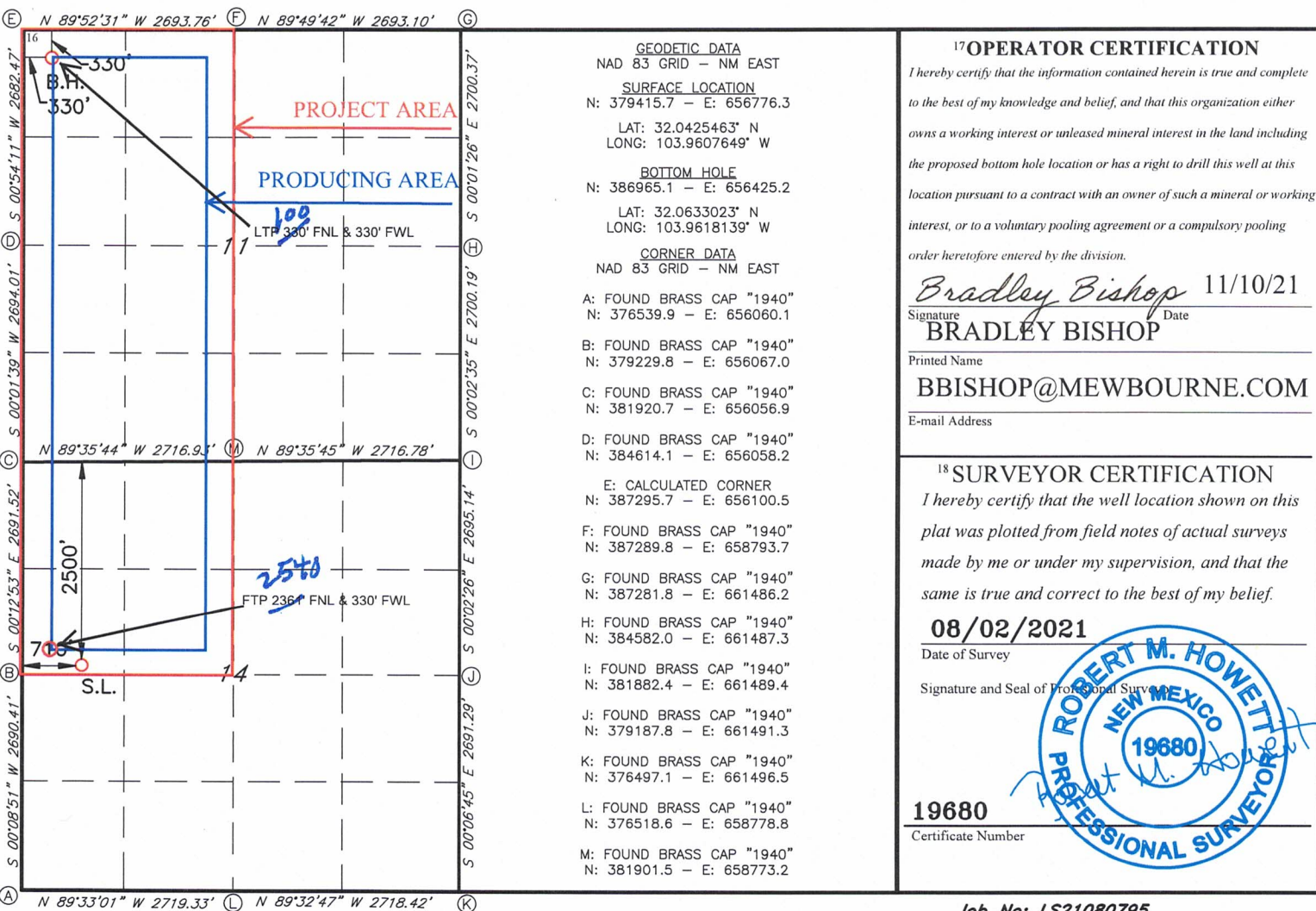
UL or lot no.	Section	Township	Range	Lot Idn	Feet from the	North/South line	Feet From the	East/West line	County
<b>E</b>	<b>14</b>	<b>26S</b>	<b>29E</b>		<b>2500</b>	<b>NORTH</b>	<b>710</b>	<b>WEST</b>	<b>EDDY</b>

<sup>11</sup> Bottom Hole Location If Different From Surface

UL or lot no.	Section	Township	Range	Lot Idn	Feet from the	North/South line	Feet from the	East/West line	County
<b>D</b>	<b>11</b>	<b>26S</b>	<b>29E</b>		<b>100 330</b>	<b>NORTH</b>	<b>330</b>	<b>WEST</b>	<b>EDDY</b>

<sup>12</sup> Dedicated Acres <b>480</b>	<sup>13</sup> Joint or Infill	<sup>14</sup> Consolidation Code	<sup>15</sup> Order No.
---	-------------------------------	----------------------------------	-------------------------

No allowable will be assigned to this completion until all interest have been consolidated or a non-standard unit has been approved by the division.



**<sup>17</sup> OPERATOR CERTIFICATION**  
 I hereby certify that the information contained herein is true and complete to the best of my knowledge and belief, and that this organization either owns a working interest or unleased mineral interest in the land including the proposed bottom hole location or has a right to drill this well at this location pursuant to a contract with an owner of such a mineral or working interest, or to a voluntary pooling agreement or a compulsory pooling order heretofore entered by the division.  
 Signature: *Bradley Bishop* Date: 11/10/21  
**BRADLEY BISHOP**  
 Printed Name  
**BBISHOP@MEWBOURNE.COM**  
 E-mail Address

**<sup>18</sup> SURVEYOR CERTIFICATION**  
 I hereby certify that the well location shown on this plat was plotted from field notes of actual surveys made by me or under my supervision, and that the same is true and correct to the best of my belief.  
**08/02/2021**  
 Date of Survey  
 Signature and Seal of Professional Surveyor  
  
**19680**  
 Certificate Number

**District I**  
 1625 N. French Dr., Hobbs, NM 88240  
 Phone: (575) 393-6161 Fax: (575) 393-0720  
**District II**  
 811 S. First St., Artesia, NM 88210  
 Phone: (575) 748-1283 Fax: (575) 748-9720  
**District III**  
 1000 Rio Brazos Road, Aztec, NM 87410  
 Phone: (505) 334-6178 Fax: (505) 334-6170  
**District IV**  
 1220 S. St. Francis Dr., Santa Fe, NM 87505  
 Phone: (505) 476-3460 Fax: (505) 476-3462

State of New Mexico  
 Energy, Minerals & Natural Resources Department  
**OIL CONSERVATION DIVISION**  
 1220 South St. Francis Dr.  
 Santa Fe, NM 87505

Form C-102  
 Revised August 1, 2011  
 Submit one copy to appropriate  
 District Office

AMENDED REPORT

**WELL LOCATION AND ACREAGE DEDICATION PLAT**

<sup>1</sup> API Number <b>30-015-53453</b>		<sup>2</sup> Pool Code <b>98220</b>	<sup>3</sup> Pool Name <b>PURPLE SAGE; WOLFCAMP</b>
<sup>4</sup> Property Code <b>329727</b>	<sup>5</sup> Property Name <b>FULLER 14/11 W1FC FED COM</b>		<sup>6</sup> Well Number <b>1H</b>
<sup>7</sup> OGRID NO. <b>14744</b>	<sup>8</sup> Operator Name <b>MEWBOURNE OIL COMPANY</b>		<sup>9</sup> Elevation <b>2940'</b>

<sup>10</sup> Surface Location

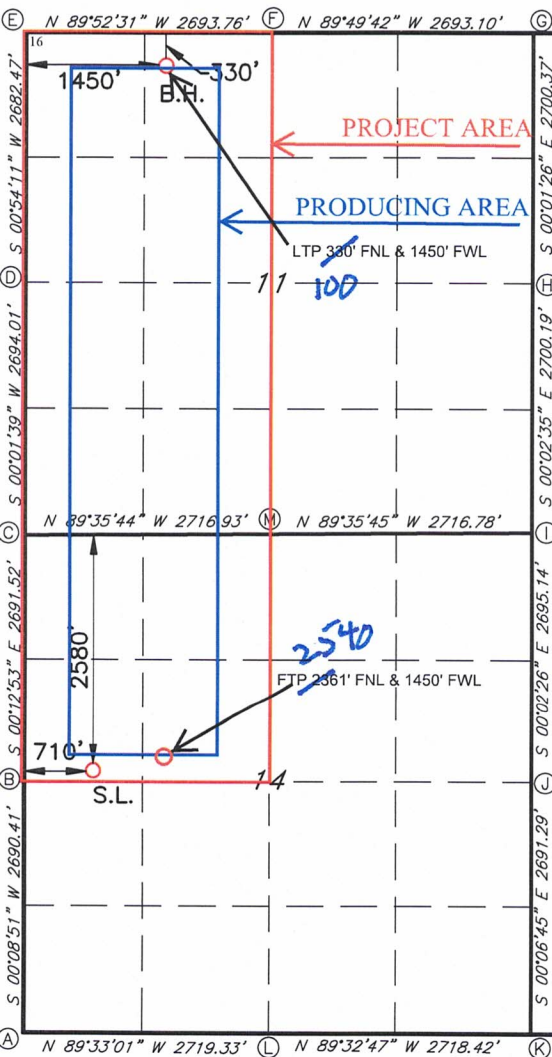
UL or lot no.	Section	Township	Range	Lot Idn	Feet from the	North/South line	Feet From the	East/West line	County
<b>E</b>	<b>14</b>	<b>26S</b>	<b>29E</b>		<b>2580</b>	<b>NORTH</b>	<b>710</b>	<b>WEST</b>	<b>EDDY</b>

<sup>11</sup> Bottom Hole Location If Different From Surface

UL or lot no.	Section	Township	Range	Lot Idn	Feet from the	North/South line	Feet from the	East/West line	County
<b>C</b>	<b>11</b>	<b>26S</b>	<b>29E</b>		<b>100</b> <b>380</b>	<b>NORTH</b>	<b>1450</b>	<b>WEST</b>	<b>EDDY</b>

<sup>12</sup> Dedicated Acres <b>480</b>	<sup>13</sup> Joint or Infill	<sup>14</sup> Consolidation Code	<sup>15</sup> Order No.
---	-------------------------------	----------------------------------	-------------------------

No allowable will be assigned to this completion until all interest have been consolidated or a non-standard unit has been approved by the division.



**GEODETIC DATA**  
 NAD 83 GRID - NM EAST

**SURFACE LOCATION**  
 N: 379335.7 - E: 656776.6  
 LAT: 32.0423265° N  
 LONG: 103.9607647° W

**BOTTOM HOLE**  
 N: 386962.6 - E: 657545.0  
 LAT: 32.0632850° N  
 LONG: 103.9581993° W

**CORNER DATA**  
 NAD 83 GRID - NM EAST

A: FOUND BRASS CAP "1940"  
 N: 376539.9 - E: 656060.1

B: FOUND BRASS CAP "1940"  
 N: 379229.8 - E: 656067.0

C: FOUND BRASS CAP "1940"  
 N: 381920.7 - E: 656056.9

D: FOUND BRASS CAP "1940"  
 N: 384614.1 - E: 656058.2

E: CALCULATED CORNER  
 N: 387295.7 - E: 656100.5

F: FOUND BRASS CAP "1940"  
 N: 387289.8 - E: 658793.7

G: FOUND BRASS CAP "1940"  
 N: 387281.8 - E: 661486.2

H: FOUND BRASS CAP "1940"  
 N: 384582.0 - E: 661487.3

I: FOUND BRASS CAP "1940"  
 N: 381882.4 - E: 661489.4

J: FOUND BRASS CAP "1940"  
 N: 379187.8 - E: 661491.3

K: FOUND BRASS CAP "1940"  
 N: 376497.1 - E: 661496.5

L: FOUND BRASS CAP "1940"  
 N: 376518.6 - E: 658778.8

M: FOUND BRASS CAP "1940"  
 N: 381901.5 - E: 658773.2

<sup>17</sup> OPERATOR CERTIFICATION

I hereby certify that the information contained herein is true and complete to the best of my knowledge and belief, and that this organization either owns a working interest or unleased mineral interest in the land including the proposed bottom hole location or has a right to drill this well at this location pursuant to a contract with an owner of such a mineral or working interest, or to a voluntary pooling agreement or a compulsory pooling order heretofore entered by the division.

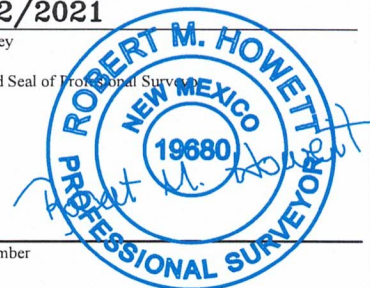
*Bradley Bishop* 11/10/21  
 Signature Date  
**BRADLEY BISHOP**  
 Printed Name  
**BBISHOP@MEWBOURNE.COM**  
 E-mail Address

<sup>18</sup> SURVEYOR CERTIFICATION

I hereby certify that the well location shown on this plat was plotted from field notes of actual surveys made by me or under my supervision, and that the same is true and correct to the best of my belief.

**08/02/2021**

Date of Survey  
 Signature and Seal of Professional Surveyor



**19680**  
 Certificate Number

District I  
 1625 N. French Dr., Hobbs, NM 88240  
 Phone: (575) 393-6161 Fax: (575) 393-0720  
 District II  
 811 S. First St., Artesia, NM 88210  
 Phone: (575) 748-1283 Fax: (575) 748-9720  
 District III  
 1000 Rio Brazos Road, Aztec, NM 87410  
 Phone: (505) 334-6178 Fax: (505) 334-6170  
 District IV  
 1220 S. St. Francis Dr., Santa Fe, NM 87505  
 Phone: (505) 476-3460 Fax: (505) 476-3462

State of New Mexico  
 Energy, Minerals & Natural Resources Department  
 OIL CONSERVATION DIVISION  
 1220 South St. Francis Dr.  
 Santa Fe, NM 87505

Form C-102  
 Revised August 1, 2011  
 Submit one copy to appropriate  
 District Office

AMENDED REPORT

WELL LOCATION AND ACREAGE DEDICATION PLAT

<sup>1</sup> API Number <b>30-015-49781</b>	<sup>2</sup> Pool Code 98220	<sup>3</sup> Pool Name PURPLE SAGE; WOLFCAMP GAS POOL
<sup>4</sup> Property Code <b>329727</b>	<sup>5</sup> Property Name <b>FULLER 14/11 W1FC FED COM</b>	
<sup>7</sup> OGRID NO. 14744	<sup>8</sup> Operator Name <b>MEWBOURNE OIL COMPANY</b>	<sup>6</sup> Well Number <b>2H</b>
		<sup>9</sup> Elevation <b>2938'</b>

<sup>10</sup> Surface Location									
UL or lot no.	Section	Township	Range	Lot Idn	Feet from the	North/South line	Feet From the	East/West line	County
<b>E</b>	<b>14</b>	<b>26S</b>	<b>29E</b>		<b>2600</b>	<b>NORTH</b>	<b>540</b>	<b>WEST</b>	<b>EDDY</b>

<sup>11</sup> Bottom Hole Location If Different From Surface									
UL or lot no.	Section	Township	Range	Lot Idn	Feet from the	North/South line	Feet from the	East/West line	County
<b>C</b>	<b>11</b>	<b>26S</b>	<b>29E</b>		<b>100 380</b>	<b>NORTH</b>	<b>2010</b>	<b>WEST</b>	<b>EDDY</b>

<sup>12</sup> Dedicated Acres 480	<sup>13</sup> Joint or Infill	<sup>14</sup> Consolidation Code	<sup>15</sup> Order No.
--------------------------------------	-------------------------------	----------------------------------	-------------------------

No allowable will be assigned to this completion until all interest have been consolidated or a non standard unit has been approved by the division.

**16**

**CORNER DATA**  
 NAD 83 GRID - NM EAST

A: FOUND BRASS CAP "1940"  
 N: 376539.9 - E: 656060.1

B: FOUND BRASS CAP "1940"  
 N: 379229.8 - E: 656067.0

C: FOUND BRASS CAP "1940"  
 N: 381920.7 - E: 656056.9

D: FOUND BRASS CAP "1940"  
 N: 384614.1 - E: 656058.2

E: FOUND 1/2" REBAR  
 N: 387267.1 - E: 656100.2

F: FOUND BRASS CAP "1940"  
 N: 387281.8 - E: 661486.2

G: FOUND BRASS CAP "1940"  
 N: 381882.4 - E: 661489.4

H: FOUND BRASS CAP "1940"  
 N: 379187.8 - E: 661491.3

I: FOUND BRASS CAP "1940"  
 N: 376497.1 - E: 661496.5

J: FOUND BRASS CAP "1940"  
 N: 376518.6 - E: 658778.8

K: FOUND BRASS CAP "1940"  
 N: 381901.5 - E: 658773.2

**17 OPERATOR CERTIFICATION**  
 I hereby certify that the information contained herein is true and complete to the best of my knowledge and belief, and that this organization either owns a working interest or unleased mineral interest in the land including the proposed bottom hole location or has a right to drill this well at this location pursuant to a contract with an owner of such a mineral or working interest, or to a voluntary pooling agreement or a compulsory pooling order heretofore entered by the division.

Signature: *Bradley Bishop* Date: 9-4-20  
 Printed Name: BRADLEY BISHOP  
 E-mail Address: BBISHOP@MEWBOURNE.COM

**18 SURVEYOR CERTIFICATION**  
 I hereby certify that the well location shown on this plat was plotted from field notes of actual surveys made by me or under my supervision, and that the same is true and correct to the best of my belief.

Date of Survey: 8-4-20  
 Signature and Seal of Professional Surveyor: *Robert M. Howett*  
 Certificate Number: 19680

**19680**  
 PROFESSIONAL SURVEYOR

Geometric Data:  
 NAD 83 GRID - NM EAST  
 BOTTOM HOLE: N: 386942.7 - E: 658104.5  
 LAT: 32.0632247° N  
 LONG: 103.9563933° W

SURFACE LOCATION:  
 NAD 83 GRID - NM EAST  
 N: 379316.9 - E: 656606.7  
 LAT: 32.0422762° N  
 LONG: 103.9613133° W

Well Location: B.H. (Bottom Hole), S.L. (Surface Location)  
 Distances: 2010', 2600', 540', 330', 2540', 2360'

Directions: S 89°50'39" W 5387.18', N 89°35'44" W 2716.9', N 89°35'45" W 2716.78', N 89°33'01" W 2719.33', N 89°32'47" W 2718.42', S 00°54'21" W 2653.87', S 00°01'39" W 2694.01', S 00°01'39" W 2716.9', S 00°12'53" E 2691.52', S 00°08'51" W 2690.41', S 00°02'00" W 5400.55', N 00°02'00" W 5400.55', S 00°02'26" E 2695.13', S 00°06'45" W 2691.29'

Other: LTP 2360' FNL & 2010' FWL, FTP 2360' FSL & 2010' FWL

STATE OF NEW MEXICO  
ENERGY, MINERALS AND NATURAL RESOURCES DEPARTMENT  
OIL CONSERVATION DIVISION

APPLICATION OF MEWBOURNE OIL  
COMPANY FOR COMPULSORY POOLING  
AND APPROVAL OF UNORTHODOX WELL,  
LOCATIONS, EDDY COUNTY, NEW MEXICO.

23445  
Case No. 23345

SELF-AFFIRMED STATEMENT OF NOTICE

James Bruce deposes and states:

1. I am over the age of 18, and have personal knowledge of the matters stated herein.
2. I am an attorney for Mewbourne Oil Company.
3. Mewbourne Oil Company has conducted a good faith, diligent effort to find the names and correct addresses of the interest owners entitled to receive notice of the application filed herein.
4. Notice of the application was provided to the interest owners, at their last known addresses, by certified mail. Copies of the notice letter and certified return receipts are attached hereto as Attachment A.
5. Applicant has complied with the notice provisions of Division Rules.
6. I understand that this Self-Affirmed Statement will be used as written testimony in this case. I affirm that my testimony in paragraphs 1 through 5 above is true and correct and is made under penalty of perjury under the laws of the State of New Mexico. My testimony is made as of the date handwritten next to my signature below.

Date: 4/4/23

James Bruce  
James Bruce

Revised  
EXHIBIT 4

**JAMES BRUCE**  
ATTORNEY AT LAW

POST OFFICE BOX 1056  
SANTA FE, NEW MEXICO 87504

369 MONTEZUMA, NO. 213  
SANTA FE, NEW MEXICO 87501

(505) 982-2043 (Phone)  
(505) 660-6612 (Cell)  
(505) 982-2151 (Fax)

[jamesbruc@aol.com](mailto:jamesbruc@aol.com)

March 16, 2023

CERTIFIED MAIL - RETURN RECEIPT REQUESTED

To: Persons on Exhibit A

Ladies and gentlemen:

Enclosed are copies of two applications filed with the New Mexico Oil Conservation Division by Mewbourne Oil Company, seeking the relief set forth below:

(i) Case No. 23445: Mewbourne Oil Company seeks an order pooling all uncommitted mineral interest owners in the Wolfcamp formation underlying a horizontal spacing unit comprised of the NW/4 of Section 14 and the W/2 of Section 11, Township 26 South, Range 29 East, NMPM. The unit will be dedicated to: (a) the Fuller 14/11 W1ED Fed. Com. Well No. 1H, with a first take point in the SW/4NW/4 of Section 14 and a last take point in the NW/4NW/4 of Section 11; (b) the Fuller 14/11 W1ED Fed. Com. Well No. 2H, with a first take point in the SW/4NW/4 of Section 14 and a last take point in the NW/4NW/4 of Section 11; (c) the Fuller 14/11 W1FC Fed. Com. Well No. 1H, with a first take point in the SE/4NW/4 of Section 14 and a last take point in the NE/4NW/4 of Section 11; and (d) the Fuller 14/11 W1FC Fed. Com. Well No. 2H, with a first take point in the SE/4NW/4 of Section 14 and a last take point in the NE/4NW/4 of Section 11. The first and last take points of the wells will be 100 feet from the end lines of the well unit, and applicant requests approval of the unorthodox well locations; and

(ii) Case No. 23446: Mewbourne Oil Company seeks an order pooling all uncommitted mineral interest owners in the Bone Spring formation underlying a non-standard horizontal spacing unit comprised of the Bone Spring formation underlying a horizontal well unit comprised of the NW/4 of Section 14 and the W/2 of Section 11, Township 26 South, Range 29 East, NMPM. The unit will be dedicated to: (a) the Fuller 14/11 B2ED Fed. Com. Well No. 1H, with a first take point in the SW/4NW/4 of Section 14 and a last take point in the NW/4NW/4 of Section 11; and (b) the Fuller 14/11 B2FC Fed. Com. Well No. 2H, with a first take point in the SE/4NW/4 of Section 14 and a last take point in the NE/4NW/4 of Section 11. Applicant also requests approval of the non-standard unit.

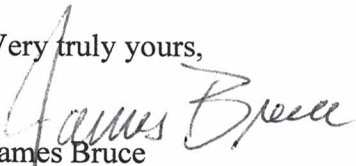
ATTACHMENT

A

Also to be considered will be the cost of drilling, completing, testing, and equipping the wells and the allocation of the cost thereof, as well as actual operating costs and charges for supervision, designation of applicant as operator of the wells, and a 200% charge for the risk involved in drilling, completing, testing, and equipping the wells.

These matters are scheduled for hearing at 8:15 a.m. on Thursday, April 6, 2023. During the current circumstances, state buildings are closed to the public and the hearing will be conducted remotely. To view the hearing docket and to determine how to participate in an electronic hearing, go to <https://www.emnrd.nm.gov/ocd/hearing-info/>, or contact Marlene Salvidrez at [Marlene.Salvidrez@emnrd.nm.gov](mailto:Marlene.Salvidrez@emnrd.nm.gov). You are not required to attend this hearing, but as an owner of an interest who may be affected by the applications, you may appear and present testimony. Failure to appear at that time and become a party of record will preclude you from contesting these matters at a later date. A party appearing in a Division case is required by Division Rules to file a Pre-Hearing Statement no later than five business days before the hearing date. This statement may be filed online with the Division at [ocd.hearings@emnrd.nm.gov](mailto:ocd.hearings@emnrd.nm.gov), and should include: The name of the party and his or her attorney; a concise statement of the case; the name(s) of the witness(es) the party will call to testify at the hearing; the approximate time the party will need to present his or her case; and identification of any procedural matters that need to be resolved prior to the hearing. The Pre-Hearing Statement must also be provided to the undersigned.

Very truly yours,



James Bruce

Attorney for Mewbourne Oil Company



EXHIBIT A

Working Interest Owners

Nu-Energy Oil & Gas, Inc.  
Address unknown

Carbon Techs Energy, Inc.  
P.O. Box 4548  
Greensboro, North Carolina 27404

Record Title Owners

John F. Green  
43 Haight Ave  
Poughkeepsie, NY 12603

Exco Resources, Inc.  
12377 Merit Dr., Suite 1700  
Dallas, Texas 75251-2256  
Attn: Joshua Raley

RKC, Inc. and  
Vivian M. Kral  
7500 Arapahoe Road, Suite 380  
Centennial, Colorado 80112  
Attn: Anthony Kochevor

K.P. Kauffman Company, Inc.  
Attn: Land Manager  
1675 Broadway #2800  
Denver, CO 80202

Offsets to Non-Standard Unit

COG Operating LLC  
600 W. Illinois Ave.  
Midland, TX 79701  
Attn: Baylor Mitchell

**U.S. Postal Service™  
CERTIFIED MAIL® RECEIPT**  
Domestic Mail Only

For delivery information, visit our website at [www.usps.com](http://www.usps.com)

**OFFICIAL USE**

Certified Mail Fee \$ \_\_\_\_\_

Extra Services & Fees (check box, add fee as appropriate)

Return Receipt (hardcopy) \$ \_\_\_\_\_

Return Receipt (electronic) \$ \_\_\_\_\_

Certified Mail Restricted Delivery \$ \_\_\_\_\_

Adult Signature Required \$ \_\_\_\_\_

Adult Signature Restricted Delivery \$ \_\_\_\_\_

Postage Here \$ \_\_\_\_\_

**Total Postage and Fees** \$ \_\_\_\_\_

Sent To Exco Resources, Inc.  
12377 Merit Dr., Suite 1700  
Dallas, Texas 75251-2256  
Attn: Joshua Raley

Street and Apt. No., or PO Box No. \_\_\_\_\_  
City, State, ZIP+4® \_\_\_\_\_

PS Form 3800, April 2015 PSN 7530-02-000-9047 See Reverse for Instructions

9299 4950 2000 0560 7202

**SENDER: COMPLETE THIS SECTION**

Complete items 1, 2, and 3.  
Print your name and address on the reverse so that we can return the card to you.  
Attach this card to the back of the mailpiece, or on the front if space permits.  
1. Article Addressed to:

RKC, Inc. and  
Vivian M. Kral  
7500 Arapahoe Road, Suite 380  
Centennial, Colorado 80112  
Attn: Anthony Kochevor

**COMPLETE THIS SECTION ON DELIVERY**

A. Signature [Signature]  Agent  Addressee

B. Received by (Printed Name) \_\_\_\_\_ C. Date of Delivery \_\_\_\_\_

D. Is delivery address different from item 1?  Yes  No  
If YES, enter delivery address below:

3. Service Type  Priority Mail Express®  Registered Mail™  Registered Mail Restricted Delivery  Signature Confirmation™  Signature Confirmation Restricted Delivery

Certified Mail®  Certified Mail Restricted Delivery  Insured Mail (over \$500)

2. Article Number (Transfer from) 7021 0950 0002 0364 6676

PS Form 3811, July 2020 PSN 7530-02-000-9053 Domestic Return Receipt

**U.S. Postal Service™  
CERTIFIED MAIL® RECEIPT**  
Domestic Mail Only

For delivery information, visit our website at [www.usps.com](http://www.usps.com)

**OFFICIAL USE**

Certified Mail Fee \$ \_\_\_\_\_

Extra Services & Fees (check box, add fee as appropriate)

Return Receipt (hardcopy) \$ \_\_\_\_\_

Return Receipt (electronic) \$ \_\_\_\_\_

Certified Mail Restricted Delivery \$ \_\_\_\_\_

Adult Signature Required \$ \_\_\_\_\_

Adult Signature Restricted Delivery \$ \_\_\_\_\_

Postage Here \$ \_\_\_\_\_

**Total Postage and Fees** \$ \_\_\_\_\_

Sent To RKC, Inc. and  
Vivian M. Kral  
7500 Arapahoe Road, Suite 380  
Centennial, Colorado 80112  
Attn: Anthony Kochevor

Street and Apt. No., or PO Box No. \_\_\_\_\_  
City, State, ZIP+4® \_\_\_\_\_

PS Form 3800, April 2015 PSN 7530-02-000-9047 See Reverse for Instructions

9299 4950 2000 0560 7202

**SENDER: COMPLETE THIS SECTION**

Complete items 1, 2, and 3.  
Print your name and address on the reverse so that we can return the card to you.  
Attach this card to the back of the mailpiece, or on the front if space permits.  
1. Article Addressed to:

Exco Resources, Inc.  
12377 Merit Dr., Suite 1700  
Dallas, Texas 75251-2256  
Attn: Joshua Raley

**COMPLETE THIS SECTION ON DELIVERY**

A. Signature [Signature]  Agent  Addressee

B. Received by (Printed Name) J. Allen C. Date of Delivery 3/27/23

D. Is delivery address different from item 1?  Yes  No  
If YES, enter delivery address below:

3. Service Type  Priority Mail Express®  Registered Mail™  Registered Mail Restricted Delivery  Signature Confirmation™  Signature Confirmation Restricted Delivery

Certified Mail®  Certified Mail Restricted Delivery  Collect on Delivery

2. Article No. 7021 0950 0002 0364 6683

PS Form 3811, July 2020 PSN 7530-02-000-9053 Domestic Return Receipt

FW

**SENDER: COMPLETE THIS SECTION**

Complete items 1, 2, and 3.  
 Print your name and address on the reverse so that we can return the card to you.  
 Attach this card to the back of the mailpiece, or on the front if space permits.

1. Article Addressed to:

COG Operating LLC  
 600 W. Illinois Ave.  
 Midland, TX 79701  
 Attn: Baylor Mitchell

9590 9402 7543 2098 9326 28

2. Article Number (Transfer from service label)  
 7021 0950 0002 0364 6652 (over \$500)

PS Form 3811, July 2020 PSN 7530-02-000-9053

**COMPLETE THIS SECTION ON DELIVERY**

A. Signature  Agent  
 Addressee

B. Received by (Printed Name)  
 Isaac Alvarado

C. Date of Delivery  Yes  
 No

D. Is delivery address different from item 1? If YES, enter delivery address below:

3. Service Type  Priority Mail Express®  
 Registered Mail™  
 Registered Mail Restricted Delivery  
 Adult Signature Restricted Delivery  
 Certified Mail®  
 Certified Mail Restricted Delivery  
 Collect on Delivery Restricted Delivery

Signature Confirmation™  
 Signature Confirmation Restricted Delivery

Domestic Return Receipt  Full

**U.S. Postal Service™**  
**CERTIFIED MAIL® RECEIPT**  
 Domestic Mail Only

For delivery information, visit our website at [www.usps.com](http://www.usps.com)®.

**OFFICIAL USE**

Certified Mail Fee \$ \_\_\_\_\_

Extra Services & Fees (check box, add fee as appropriate)

Return Receipt (hardcopy) \$ \_\_\_\_\_

Return Receipt (electronic) \$ \_\_\_\_\_

Certified Mail Restricted Delivery \$ \_\_\_\_\_

Adult Signature Required \$ \_\_\_\_\_

Adult Signature Restricted Delivery \$ \_\_\_\_\_

Postage \$ \_\_\_\_\_

Total Postage and Fees \$ \_\_\_\_\_

Sent To COG Operating LLC  
 600 W. Illinois Ave.  
 Midland, TX 79701  
 Attn: Baylor Mitchell

Street and Apt. No., or P.O. Box  
 City, State, ZIP+4®

Postmark Here

PS Form 3800, April 2015 PSN 7530-02-000-9047 See Reverse for Instructions

2599 4960 2000 0560 7202

7021 0950 0002 0364 6669

**U.S. Postal Service™**  
**CERTIFIED MAIL® RECEIPT** *Full*  
 Domestic Mail Only

For delivery information, visit our website at [www.usps.com](http://www.usps.com)®.

**OFFICIAL USE**

Certified Mail Fee	\$
Extra Services & Fees (check box, add fee as appropriate)	
<input type="checkbox"/> Return Receipt (hardcopy)	\$
<input type="checkbox"/> Return Receipt (electronic)	\$
<input type="checkbox"/> Certified Mail Restricted Delivery	\$
<input type="checkbox"/> Adult Signature Required	\$
<input type="checkbox"/> Adult Signature Restricted Delivery	\$
Postage	\$
<b>Total Postage and Fees</b>	\$

Postmark Here

Sent To **K.P. Kauffman Company, Inc.**  
 Attn: Land Manager  
 1675 Broadway #2800  
 Denver, CO 80202

Street and Apt. No., or PO Box No.  
 City, State, ZIP+4®

PS Form 3800, April 2015 PSN 7530-02-000-9047 See Reverse for Instructions

7021 0950 0002 0364 6690

**U.S. Postal Service™**  
**CERTIFIED MAIL® RECEIPT** *Full*  
 Domestic Mail Only

For delivery information, visit our website at [www.usps.com](http://www.usps.com)®.

**OFFICIAL USE**

Certified Mail Fee	\$
Extra Services & Fees (check box, add fee as appropriate)	
<input type="checkbox"/> Return Receipt (hardcopy)	\$
<input type="checkbox"/> Return Receipt (electronic)	\$
<input type="checkbox"/> Certified Mail Restricted Delivery	\$
<input type="checkbox"/> Adult Signature Required	\$
<input type="checkbox"/> Adult Signature Restricted Delivery	\$
Postage	\$
<b>Total Postage and Fees</b>	\$

Postmark Here

Sent To **John F. Green**  
 43 Haight Ave  
 Dunkirk, NY 12603

Street and Apt. No., or PO Box No.  
 City, State, ZIP+4®

PS Form 3800, April 2015 PSN 7530-02-000-9047 See Reverse for Instructions

7021 0950 0002 0364 6706

**U.S. Postal Service™**  
**CERTIFIED MAIL® RECEIPT** *Full*  
 Domestic Mail Only

For delivery information, visit our website at [www.usps.com](http://www.usps.com)®.

**OFFICIAL USE**

Certified Mail Fee	\$
Extra Services & Fees (check box, add fee as appropriate)	
<input type="checkbox"/> Return Receipt (hardcopy)	\$
<input type="checkbox"/> Return Receipt (electronic)	\$
<input type="checkbox"/> Certified Mail Restricted Delivery	\$
<input type="checkbox"/> Adult Signature Required	\$
<input type="checkbox"/> Adult Signature Restricted Delivery	\$
Postage	\$
<b>Total Postage and Fees</b>	\$

Postmark Here

Sent To **Carbon Techs Energy, Inc.**  
 P.O. Box 4548  
 Greensboro, North Carolina 27404

Street and Apt. No., or PO Box No.  
 City, State, ZIP+4®

PS Form 3800, April 2015 PSN 7530-02-000-9047 See Reverse for Instructions



**CASE NO. 23445**

**STATUS OF CERTIFIED NOTICE**

<u>INTEREST OWNER</u>	<u>MAILING DATE</u>	<u>RECEIPT DATE</u>	<u>CARD RETURNED</u>
<u>Working Interests</u> Nu-Energy Oil & Gas, Inc.	Address unknown and certified letter not sent		
Carbon Techs Energy, Inc.	3/16/2023	Returned Undelivered	No
<u>Record Title Owners</u> John F. Green	3/16/2023	Not Returned	No
Exco Resources, Inc.	3/16/2023	3/27/2023	Yes
RKC, Inc. and Vivian M. Kral	3/16/2023	Unknown	Yes
K.P. Kauffman Company, Inc.	3/16/2023	Not Returned	No

EXHIBIT

7