

STATE OF NEW MEXICO  
DEPARTMENT OF ENERGY, MINERALS AND NATURAL RESOURCES  
OIL CONSERVATION DIVISION

APPLICATION OF FLAT CREEK RESOURCES, LLC  
FOR COMPULSORY POOLING AND APPROVAL OF  
NON-STANDARD SPACING UNIT,  
EDDY COUNTY, NEW MEXICO

Case No. 23587

APPLICATION OF FLAT CREEK RESOURCES, LLC  
FOR COMPULSORY POOLING,  
EDDY COUNTY, NEW MEXICO

Case No. 23588

APPLICATION OF FLAT CREEK RESOURCES, LLC  
FOR COMPULSORY POOLING,  
EDDY COUNTY, NEW MEXICO

Case No. 23589

APPLICATION OF FLAT CREEK RESOURCES, LLC  
FOR COMPULSORY POOLING,  
EDDY COUNTY, NEW MEXICO

Case No. 23590

---

# FLAT CREEK RESOURCES, LLC



---

*Rena 7 Fed Com 601H, 603H, 702H, 704H  
Wells*

***AMENDED EXHIBIT A-6***

July 20, 2023

District I
1625 N. French Dr., Hobbs, NM 88240
Phone: (575) 393-6161 Fax: (575) 393-0720
District II
811 S. First St., Artesia, NM 88210
Phone: (575) 748-1283 Fax: (575) 748-9720
District III
1000 Rio Brazos Road, Aztec, NM 87410
Phone: (505) 334-6178 Fax: (505) 334-6170
District IV
1220 S. St. Francis Dr., Santa Fe, NM 87505
Phone: (505) 476-3460 Fax: (505) 476-3462

State of New Mexico
Energy, Minerals & Natural Resources Department
OIL CONSERVATION DIVISION
1220 South St. Francis Dr.
Santa Fe, NM 87505

Form C-102
Revised August 1, 2011
Submit one copy to appropriate
District Office
[ ] AMENDED REPORT

WELL LOCATION AND ACREAGE DEDICATION PLAT

Table with 3 columns: API Number (30-015-), Pool Code (GA-04 S182728A), Pool Name (WC-015 G-04 S232628M; BONE SPRING (98056)), Property Code, Property Name (RENA 7 COM), Well Number (601H), OGRID No. (327746), Operator Name (FLAT CREEK RESOURCES, LLC), Elevation (3,432')

Surface Location

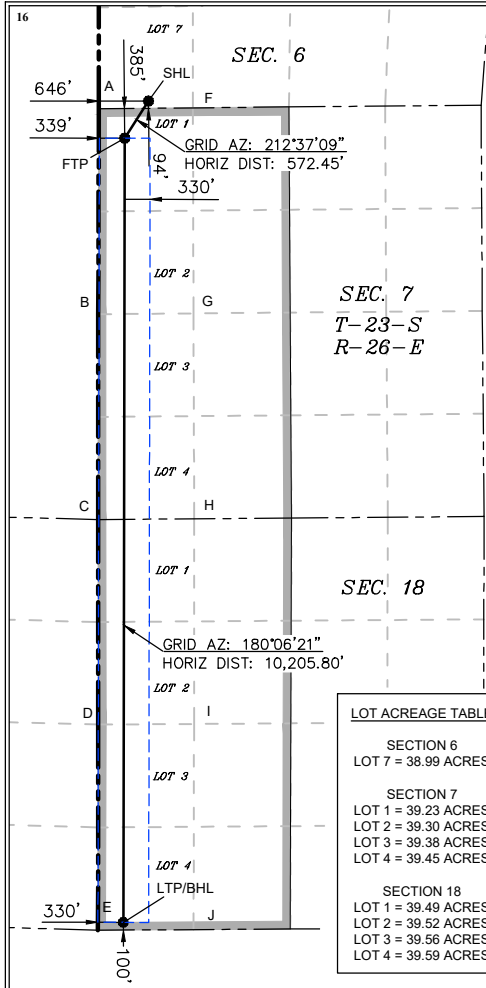
Table with 10 columns: UL or lot no. (7), Section (6), Township (23S), Range (26E), Lot Idn, Feet from the (94), North/South line (SOUTH), Feet from the (646), East/West line (WEST), County (EDDY)

Bottom Hole Location If Different From Surface

Table with 10 columns: UL or lot no. (4), Section (18), Township (23S), Range (26E), Lot Idn, Feet from the (100), North/South line (SOUTH), Feet from the (330), East/West line (WEST), County (EDDY)

Table with 5 columns: Dedicated Acres, Joint or Infill, Consolidation Code, Order No.

No allowable will be assigned to this completion until all interests have been consolidated or a non-standard unit has been approved by the division.



LEGEND
SECTION LINE
PROPOSED WELL BORE
330' BUFFER
ALLOCATION AREA

COORDINATE TABLE
SHL (NAD 83 NME), FTP (NAD 83 NME), LTP/BHL (NAD 83 NME)
SHL (NAD 27 NME), FTP (NAD 27 NME), LTP/BHL (NAD 27 NME)

CORNER COORDINATES (NAD 83 NME)

Table of corner coordinates (A-J) for NAD 83 NME.

CORNER COORDINATES (NAD 27 NME)

Table of corner coordinates (A-J) for NAD 27 NME.

LOT ACREAGE TABLE
SECTION 6 LOT 7 = 38.99 ACRES
SECTION 7 LOT 1 = 39.23 ACRES, LOT 2 = 39.30 ACRES, LOT 3 = 39.38 ACRES, LOT 4 = 39.45 ACRES
SECTION 18 LOT 1 = 39.49 ACRES, LOT 2 = 39.52 ACRES, LOT 3 = 39.56 ACRES, LOT 4 = 39.59 ACRES

OPERATOR CERTIFICATION

I hereby certify that the information contained herein is true and complete to the best of my knowledge and belief, and that this organization either owns a working interest or unleased mineral interest in the land including the proposed bottom hole location or has a right to drill this well at this location pursuant to a contract with an owner of such a mineral or working interest, or to a voluntary pooling agreement or a compulsory pooling order heretofore entered by the division.

Amended Exhibit A-6
Flat Creek Resources, LLC
NMOCD Case Nos. 23587-23590
July 20, 2023

SURVEYOR CERTIFICATION

I hereby certify that the well location shown on this plat was plotted from field notes of actual surveys made by me or under my supervision, and that the same is true and correct to the best of my belief.

07/17/2023

Date of Survey

Signature and Seal of Professional Surveyor:

Handwritten signature of Mark Dillon Harp



MARK DILLON HARP 23786
Certificate Number

DH

618.005001.00-01

P:\618.005 Flat Creek\001 Rena 7-18 Lease\Wells\1-01 - Rena 7-18 State-Federal Com 601H\DWG\601H.dwg

District I
1625 N. French Dr., Hobbs, NM 88240
Phone: (575) 393-6161 Fax: (575) 393-0720
District II
811 S. First St., Artesia, NM 88210
Phone: (575) 748-1283 Fax: (575) 748-9720
District III
1000 Rio Brazos Road, Aztec, NM 87410
Phone: (505) 334-6178 Fax: (505) 334-6170
District IV
1220 S. St. Francis Dr., Santa Fe, NM 87505
Phone: (505) 476-3460 Fax: (505) 476-3462

State of New Mexico
Energy, Minerals & Natural Resources Department
OIL CONSERVATION DIVISION
1220 South St. Francis Dr.
Santa Fe, NM 87505

Form C-102
Revised August 1, 2011
Submit one copy to appropriate
District Office
[ ] AMENDED REPORT

WELL LOCATION AND ACREAGE DEDICATION PLAT

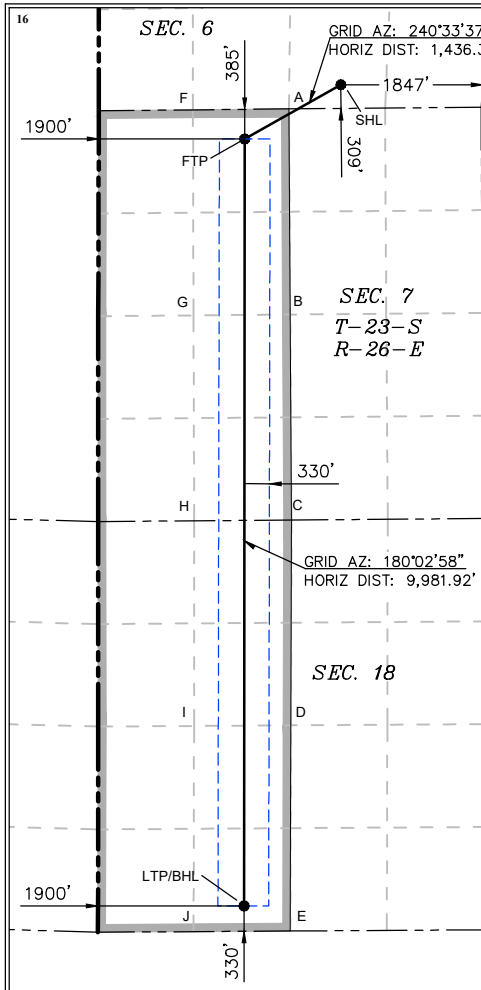
Table with 3 columns: API Number (30-015-), Pool Code (GA-04 S182728A), Pool Name (PURPLE SAGE; WOLFCAMP (GAS) (98220)), Property Code, Property Name (RENA 7 FED COM), Well Number (702H), OGRID No. (327746), Operator Name (FLAT CREEK RESOURCES, LLC), Elevation (3,417')

Table for Surface Location with columns: UL or lot no. (O), Section (6), Township (23S), Range (26E), Lot Idn, Feet from the (309), North/South line (SOUTH), Feet from the (1837), East/West line (EAST), County (EDDY)

Table for Bottom Hole Location If Different From Surface with columns: UL or lot no. (N), Section (18), Township (23S), Range (26E), Lot Idn, Feet from the (330), North/South line (SOUTH), Feet from the (1900), East/West line (WEST), County (EDDY)

Table for well details with columns: Dedicated Acres, Joint or Infill, Consolidation Code, Order No.

No allowable will be assigned to this completion until all interests have been consolidated or a non-standard unit has been approved by the division.



LEGEND, COORDINATE TABLE (SHL, FTP, LTP/BHL for NAD 83 and NAD 27), CORNER COORDINATES (NAD 83 NME), CORNER COORDINATES (NAD 27 NME)

17 OPERATOR CERTIFICATION
I hereby certify that the information contained herein is true and complete to the best of my knowledge and belief, and that this organization either owns a working interest or unleased mineral interest in the land including the proposed bottom hole location or has a right to drill this well at this location pursuant to a contract with an owner of such a mineral or working interest, or to a voluntary pooling agreement or a compulsory pooling order heretofore entered by the division.
Signature: \_\_\_\_\_ Date: \_\_\_\_\_
Printed Name: \_\_\_\_\_
E-mail Address: \_\_\_\_\_

18 SURVEYOR CERTIFICATION
I hereby certify that the well location shown on this plat was plotted from field notes of actual surveys made by me or under my supervision, and that the same is true and correct to the best of my belief.
07/17/2023
Date of Survey
Signature and Seal of Professional Surveyor:
MARK DILLON HARP 23786
Certificate Number DB 618.005001.00-02

P:\618.005 Flat Creek\001 Rena 7-18 Lease\Wells\1-02 - Rena 7-18 State-Federal Com 702H\DWG\702H.dwg

District I  
1625 N. French Dr., Hobbs, NM 88240  
Phone: (575) 393-6161 Fax: (575) 393-0720  
District II  
811 S. First St., Artesia, NM 88210  
Phone: (575) 748-1283 Fax: (575) 748-9720  
District III  
1000 Rio Brazos Road, Aztec, NM 87410  
Phone: (505) 334-6178 Fax: (505) 334-6170  
District IV  
1220 S. St. Francis Dr., Santa Fe, NM 87505  
Phone: (505) 476-3460 Fax: (505) 476-3462

State of New Mexico  
Energy, Minerals & Natural Resources Department  
OIL CONSERVATION DIVISION  
1220 South St. Francis Dr.  
Santa Fe, NM 87505

Form C-102  
Revised August 1, 2011  
Submit one copy to appropriate  
District Office  
 AMENDED REPORT

WELL LOCATION AND ACREAGE DEDICATION PLAT

<sup>1</sup> API Number <b>30-015-</b>	<sup>2</sup> Pool Code <b>GA-04 S182728A</b>	<sup>3</sup> Pool Name <b>WC-015 G-04 S232628M; BONE SPRING (98056)</b>
<sup>4</sup> Property Code	<sup>5</sup> Property Name <b>RENA 7 FED COM</b>	
<sup>7</sup> OGRID No. <b>327746</b>	<sup>8</sup> Operator Name <b>FLAT CREEK RESOURCES, LLC</b>	<sup>6</sup> Well Number <b>603H</b>
		<sup>9</sup> Elevation <b>3,417'</b>

<sup>10</sup> Surface Location

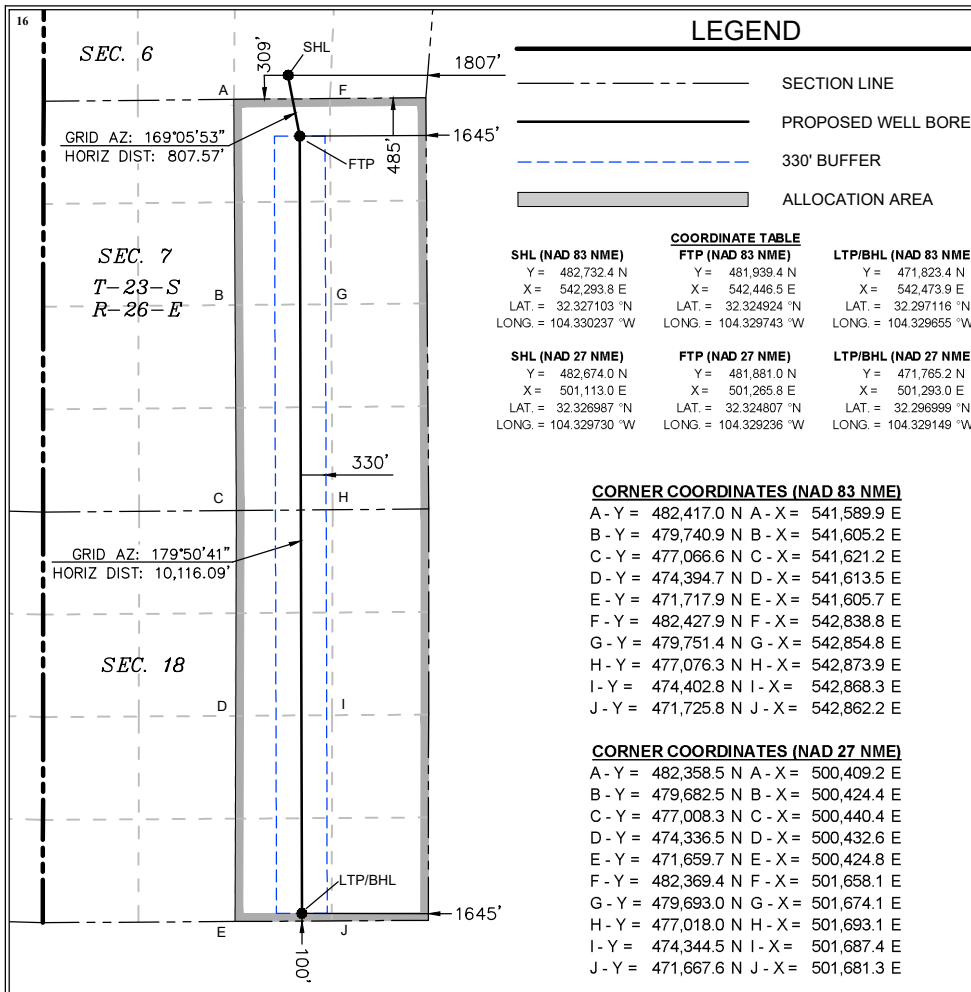
UL or lot no.	Section	Township	Range	Lot Idn	Feet from the	North/South line	Feet from the	East/West line	County
<b>O</b>	<b>6</b>	<b>23S</b>	<b>26E</b>		<b>309</b>	<b>SOUTH</b>	<b>1807</b>	<b>EAST</b>	<b>EDDY</b>

<sup>11</sup> Bottom Hole Location If Different From Surface

UL or lot no.	Section	Township	Range	Lot Idn	Feet from the	North/South line	Feet from the	East/West line	County
<b>O</b>	<b>18</b>	<b>23S</b>	<b>26E</b>		<b>100</b>	<b>SOUTH</b>	<b>1645</b>	<b>EAST</b>	<b>EDDY</b>

<sup>12</sup> Dedicated Acres	<sup>13</sup> Joint or Infill	<sup>14</sup> Consolidation Code	<sup>15</sup> Order No.

No allowable will be assigned to this completion until all interests have been consolidated or a non-standard unit has been approved by the division.



**<sup>17</sup> OPERATOR CERTIFICATION**

I hereby certify that the information contained herein is true and complete to the best of my knowledge and belief, and that this organization either owns a working interest or unleased mineral interest in the land including the proposed bottom hole location or has a right to drill this well at this location pursuant to a contract with an owner of such a mineral or working interest, or to a voluntary pooling agreement or a compulsory pooling order heretofore entered by the division.

Signature \_\_\_\_\_ Date \_\_\_\_\_

Printed Name \_\_\_\_\_

E-mail Address \_\_\_\_\_

**<sup>18</sup> SURVEYOR CERTIFICATION**

I hereby certify that the well location shown on this plat was plotted from field notes of actual surveys made by me or under my supervision, and that the same is true and correct to the best of my belief.

07/19/2023  
Date of Survey

Signature and Seal of Professional Surveyor: \_\_\_\_\_

MARK DILLON HARP 23786  
Certificate Number

**DB 618.005001.00-03**

P:\618.005 Flat Creek\001 Rena 7-18 Lease\Wells\1-03 - Rena 7-18 State-Federal Com 603H\DWG\603H.dwg

District I  
1625 N. French Dr., Hobbs, NM 88240  
Phone: (575) 393-6161 Fax: (575) 393-0720  
District II  
811 S. First St., Artesia, NM 88210  
Phone: (575) 748-1283 Fax: (575) 748-9720  
District III  
1000 Rio Brazos Road, Aztec, NM 87410  
Phone: (505) 334-6178 Fax: (505) 334-6170  
District IV  
1220 S. St. Francis Dr., Santa Fe, NM 87505  
Phone: (505) 476-3460 Fax: (505) 476-3462

State of New Mexico  
Energy, Minerals & Natural Resources Department  
OIL CONSERVATION DIVISION  
1220 South St. Francis Dr.  
Santa Fe, NM 87505

Form C-102  
Revised August 1, 2011  
Submit one copy to appropriate  
District Office  
 AMENDED REPORT

WELL LOCATION AND ACREAGE DEDICATION PLAT

<sup>1</sup> API Number <b>30-015-</b>	<sup>2</sup> Pool Code <b>GA-04 S182728A</b>	<sup>3</sup> Pool Name <b>PURPLE SAGE; WOLFCAMP (GAS) (98220)</b>
<sup>4</sup> Property Code	<sup>5</sup> Property Name <b>RENA 7 FED COM</b>	
<sup>7</sup> OGRID No. <b>327746</b>	<sup>8</sup> Operator Name <b>FLAT CREEK RESOURCES, LLC</b>	
		<sup>6</sup> Well Number <b>704H</b>
		<sup>9</sup> Elevation <b>3,416'</b>

<sup>10</sup> Surface Location

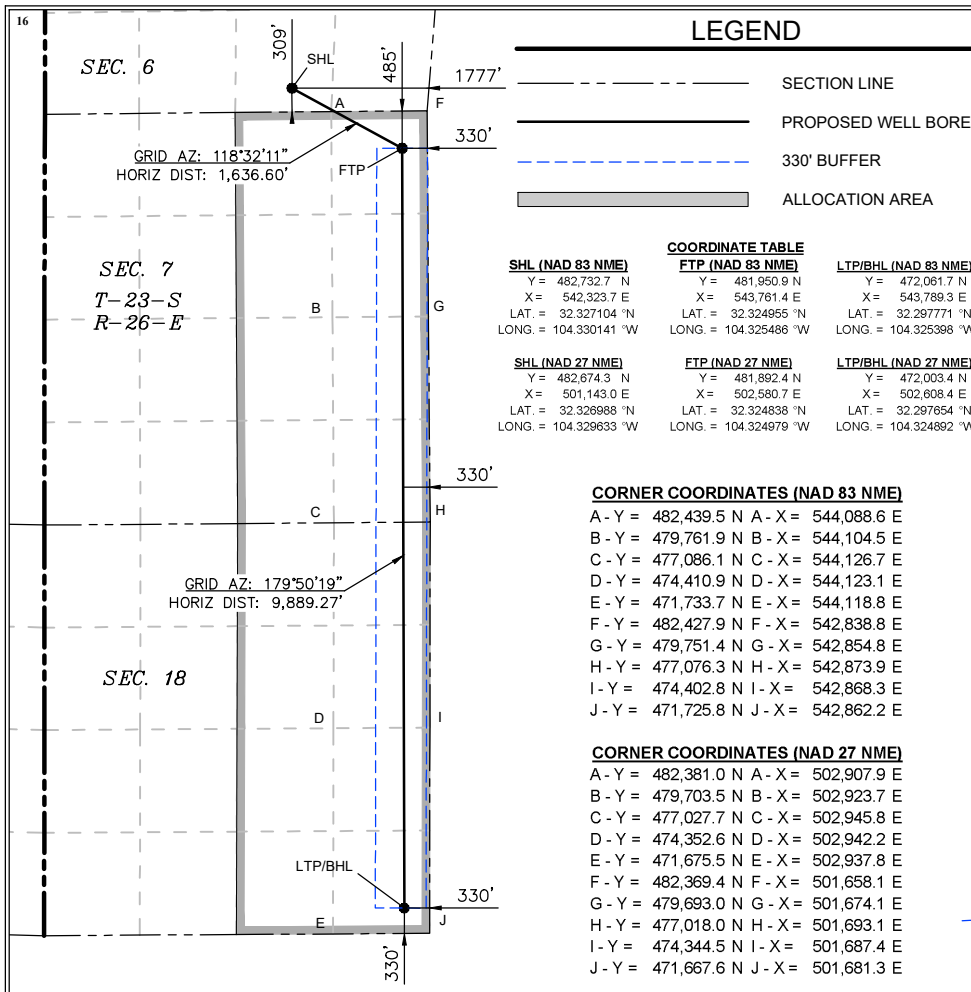
UL or lot no.	Section	Township	Range	Lot Idn	Feet from the	North/South line	Feet from the	East/West line	County
<b>O</b>	<b>6</b>	<b>23S</b>	<b>26E</b>		<b>309</b>	<b>SOUTH</b>	<b>1777</b>	<b>EAST</b>	<b>EDDY</b>

<sup>11</sup> Bottom Hole Location If Different From Surface

UL or lot no.	Section	Township	Range	Lot Idn	Feet from the	North/South line	Feet from the	East/West line	County
<b>P</b>	<b>18</b>	<b>23S</b>	<b>26E</b>		<b>330</b>	<b>SOUTH</b>	<b>330</b>	<b>EAST</b>	<b>EDDY</b>

<sup>12</sup> Dedicated Acres	<sup>13</sup> Joint or Infill	<sup>14</sup> Consolidation Code	<sup>15</sup> Order No.

No allowable will be assigned to this completion until all interests have been consolidated or a non-standard unit has been approved by the division.



**<sup>17</sup> OPERATOR CERTIFICATION**

I hereby certify that the information contained herein is true and complete to the best of my knowledge and belief, and that this organization either owns a working interest or unleased mineral interest in the land including the proposed bottom hole location or has a right to drill this well at this location pursuant to a contract with an owner of such a mineral or working interest, or to a voluntary pooling agreement or a compulsory pooling order heretofore entered by the division.

Signature \_\_\_\_\_ Date \_\_\_\_\_

Printed Name \_\_\_\_\_

E-mail Address \_\_\_\_\_

**<sup>18</sup> SURVEYOR CERTIFICATION**

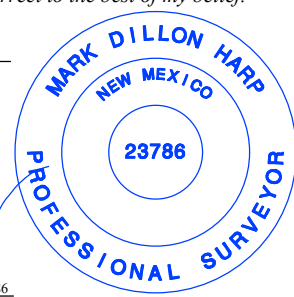
I hereby certify that the well location shown on this plat was plotted from field notes of actual surveys made by me or under my supervision, and that the same is true and correct to the best of my belief.

**07/17/2023**  
Date of Survey

Signature and Seal of Professional Surveyor: \_\_\_\_\_

**MARK DILLON HARP 23786**  
Certificate Number

**DB 618.005001.00-04**



P:\618.005 Flat Creek\001 Rena 7-18 Lease\Wells\1-04 - Rena 7-18 State-Federal Com 704H\DWG\704H.dwg