

STATE OF NEW MEXICO
DEPARTMENT OF ENERGY, MINERALS AND NATURAL RESOURCES
OIL CONSERVATION DIVISION

APPLICATION OF FLAT CREEK RESOURCES, LLC
FOR COMPULSORY POOLING AND APPROVAL OF
NON-STANDARD SPACING UNIT,
EDDY COUNTY, NEW MEXICO

Case No. 23587

APPLICATION OF FLAT CREEK RESOURCES, LLC
FOR COMPULSORY POOLING,
EDDY COUNTY, NEW MEXICO

Case No. 23588

APPLICATION OF FLAT CREEK RESOURCES, LLC
FOR COMPULSORY POOLING,
EDDY COUNTY, NEW MEXICO

Case No. 23589

APPLICATION OF FLAT CREEK RESOURCES, LLC
FOR COMPULSORY POOLING,
EDDY COUNTY, NEW MEXICO

Case No. 23590

FLAT CREEK RESOURCES, LLC



*Rena 7 Fed Com 601H, 603H, 702H, 704H
Wells*

AMENDED EXHIBIT A-6

July 20, 2023

District I
1625 N. French Dr., Hobbs, NM 88240
Phone: (575) 393-6161 Fax: (575) 393-0720
District II
811 S. First St., Artesia, NM 88210
Phone: (575) 748-1283 Fax: (575) 748-9720
District III
1000 Rio Brazos Road, Aztec, NM 87410
Phone: (505) 334-6178 Fax: (505) 334-6170
District IV
1220 S. St. Francis Dr., Santa Fe, NM 87505
Phone: (505) 476-3460 Fax: (505) 476-3462

State of New Mexico
Energy, Minerals & Natural Resources Department
OIL CONSERVATION DIVISION
1220 South St. Francis Dr.
Santa Fe, NM 87505

Form C-102
Revised August 1, 2011
Submit one copy to appropriate
District Office
[] AMENDED REPORT

WELL LOCATION AND ACREAGE DEDICATION PLAT

Table with 3 columns: API Number (30-015-), Pool Code (GA-04 S182728A), Pool Name (WC-015 G-04 S232628M; BONE SPRING (98056)), Property Code, Property Name (RENA 7 COM), Well Number (601H), OGRID No. (327746), Operator Name (FLAT CREEK RESOURCES, LLC), Elevation (3,432')

Surface Location

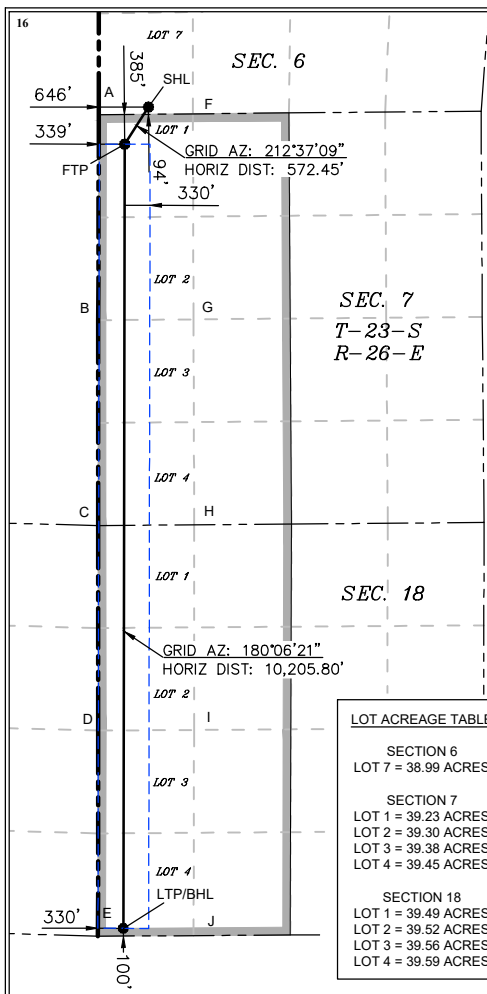
Table with 10 columns: UL or lot no. (7), Section (6), Township (23S), Range (26E), Lot Idn, Feet from the (94), North/South line (SOUTH), Feet from the (646), East/West line (WEST), County (EDDY)

Bottom Hole Location If Different From Surface

Table with 10 columns: UL or lot no. (4), Section (18), Township (23S), Range (26E), Lot Idn, Feet from the (100), North/South line (SOUTH), Feet from the (330), East/West line (WEST), County (EDDY)

Table with 4 columns: Dedicated Acres, Joint or Infill, Consolidation Code, Order No.

No allowable will be assigned to this completion until all interests have been consolidated or a non-standard unit has been approved by the division.



LEGEND: SECTION LINE, PROPOSED WELL BORE, 330' BUFFER, ALLOCATION AREA. COORDINATE TABLE: SHL (NAD 83 NME), FTP (NAD 83 NME), LTP/BHL (NAD 83 NME) with X, Y, LAT, LONG values.

CORNER COORDINATES (NAD 83 NME) and (NAD 27 NME) with A-J points and X, Y values. LOT ACREAGE TABLE for sections 6, 7, and 18.

17 OPERATOR CERTIFICATION: I hereby certify that the information contained herein is true and complete to the best of my knowledge and belief... Amended Exhibit A-6 Flat Creek Resources, LLC NMOCD Case Nos. 23587-23590 July 20, 2023

18 SURVEYOR CERTIFICATION: I hereby certify that the well location shown on this plat was plotted from field notes of actual surveys made by me or under my supervision... 07/17/2023 Date of Survey. Signature and Seal of Professional Surveyor: MARK DILLON HARP 23786. Certificate Number: 618.005001.00-01

P:\618.005 Flat Creek\001 Rena 7-18 Lease\Wells\1-01 - Rena 7-18 State-Federal Com 601H\DWG\601H.dwg

District I
1625 N. French Dr., Hobbs, NM 88240
Phone: (575) 393-6161 Fax: (575) 393-0720
District II
811 S. First St., Artesia, NM 88210
Phone: (575) 748-1283 Fax: (575) 748-9720
District III
1000 Rio Brazos Road, Aztec, NM 87410
Phone: (505) 334-6178 Fax: (505) 334-6170
District IV
1220 S. St. Francis Dr., Santa Fe, NM 87505
Phone: (505) 476-3460 Fax: (505) 476-3462

State of New Mexico
Energy, Minerals & Natural Resources Department
OIL CONSERVATION DIVISION
1220 South St. Francis Dr.
Santa Fe, NM 87505

Form C-102
Revised August 1, 2011
Submit one copy to appropriate
District Office
 AMENDED REPORT

WELL LOCATION AND ACREAGE DEDICATION PLAT

¹ API Number 30-015-	² Pool Code GA-04 S182728A	³ Pool Name PURPLE SAGE; WOLFCAMP (GAS) (98220)
⁴ Property Code	⁵ Property Name RENA 7 FED COM	
⁷ OGRID No. 327746	⁸ Operator Name FLAT CREEK RESOURCES, LLC	⁶ Well Number 702H
		⁹ Elevation 3,417'

¹⁰ Surface Location

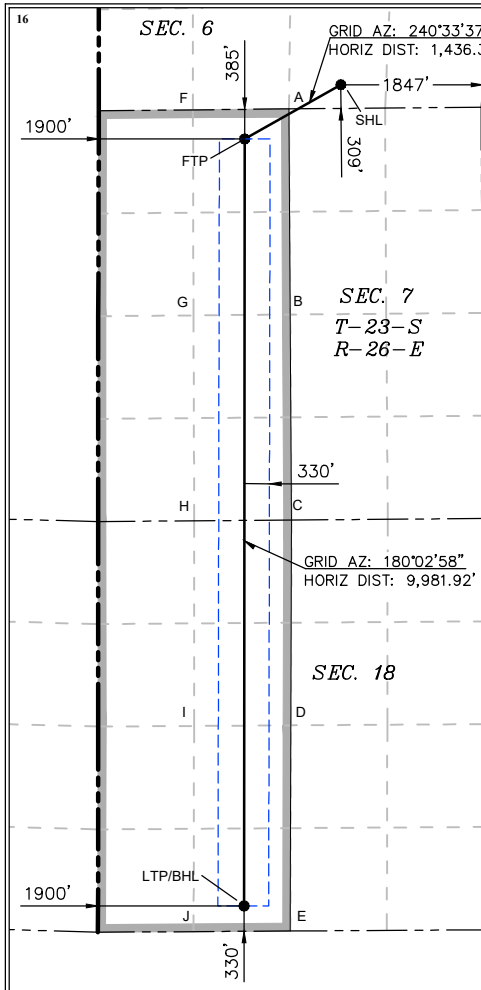
UL or lot no.	Section	Township	Range	Lot Idn	Feet from the	North/South line	Feet from the	East/West line	County
O	6	23S	26E		309	SOUTH	1837	EAST	EDDY

¹¹ Bottom Hole Location If Different From Surface

UL or lot no.	Section	Township	Range	Lot Idn	Feet from the	North/South line	Feet from the	East/West line	County
N	18	23S	26E		330	SOUTH	1900	WEST	EDDY

¹² Dedicated Acres	¹³ Joint or Infill	¹⁴ Consolidation Code	¹⁵ Order No.

No allowable will be assigned to this completion until all interests have been consolidated or a non-standard unit has been approved by the division.



LEGEND

- SECTION LINE
- PROPOSED WELL BORE
- 330' BUFFER
- ALLOCATION AREA

COORDINATE TABLE

SHL (NAD 83 NME)	FTP (NAD 83 NME)	LTP/BHL (NAD 83 NME)
Y = 482,732.1 N	Y = 482,026.2 N	Y = 472,044.2 N
X = 542,263.7 E	X = 541,012.9 E	X = 541,004.2 E
LAT. = 32.327103 °N	LAT. = 32.325162 °N	LAT. = 32.297723 °N
LONG. = 104.330335 °W	LONG. = 104.334384 °W	LONG. = 104.334412 °W

SHL (NAD 27 NME)	FTP (NAD 27 NME)	LTP/BHL (NAD 27 NME)
Y = 482,673.6 N	Y = 481,967.7 N	Y = 471,986.1 N
X = 501,083.0 E	X = 499,832.1 E	X = 499,823.4 E
LAT. = 32.326986 °N	LAT. = 32.325045 °N	LAT. = 32.297606 °N
LONG. = 104.329827 °W	LONG. = 104.333877 °W	LONG. = 104.333905 °W

CORNER COORDINATES (NAD 83 NME)

A - Y = 482,417.0 N	A - X = 541,589.9 E
B - Y = 479,740.9 N	B - X = 541,605.2 E
C - Y = 477,066.6 N	C - X = 541,621.2 E
D - Y = 474,394.7 N	D - X = 541,613.5 E
E - Y = 471,717.9 N	E - X = 541,605.7 E
F - Y = 482,404.4 N	F - X = 540,339.3 E
G - Y = 479,730.3 N	G - X = 540,345.6 E
H - Y = 477,056.6 N	H - X = 540,355.8 E
I - Y = 474,386.6 N	I - X = 540,353.1 E
J - Y = 471,710.2 N	J - X = 540,347.4 E

CORNER COORDINATES (NAD 27 NME)

A - Y = 482,358.5 N	A - X = 500,409.2 E
B - Y = 479,682.5 N	B - X = 500,424.4 E
C - Y = 477,008.3 N	C - X = 500,440.4 E
D - Y = 474,336.5 N	D - X = 500,432.6 E
E - Y = 471,659.7 N	E - X = 500,424.8 E
F - Y = 482,346.0 N	F - X = 499,158.6 E
G - Y = 479,671.9 N	G - X = 499,164.9 E
H - Y = 476,998.4 N	H - X = 499,175.0 E
I - Y = 474,328.4 N	I - X = 499,172.3 E
J - Y = 471,652.1 N	J - X = 499,166.5 E

¹⁷ OPERATOR CERTIFICATION

I hereby certify that the information contained herein is true and complete to the best of my knowledge and belief, and that this organization either owns a working interest or unleased mineral interest in the land including the proposed bottom hole location or has a right to drill this well at this location pursuant to a contract with an owner of such a mineral or working interest, or to a voluntary pooling agreement or a compulsory pooling order heretofore entered by the division.

Signature _____ Date _____

Printed Name _____

E-mail Address _____

¹⁸ SURVEYOR CERTIFICATION

I hereby certify that the well location shown on this plat was plotted from field notes of actual surveys made by me or under my supervision, and that the same is true and correct to the best of my belief.

07/17/2023
Date of Survey

Signature and Seal of Professional Surveyor: _____

MARK DILLON HARP
NEW MEXICO
23786
PROFESSIONAL SURVEYOR

MARK DILLON HARP 23786
Certificate Number DB 618.005001.00-02

P:\618.005 Flat Creek\001 Rena 7-18 Lease\Wells\1-02 - Rena 7-18 State-Federal Com 702H\DWG\702H.dwg

District I
1625 N. French Dr., Hobbs, NM 88240
Phone: (575) 393-6161 Fax: (575) 393-0720
District II
811 S. First St., Artesia, NM 88210
Phone: (575) 748-1283 Fax: (575) 748-9720
District III
1000 Rio Brazos Road, Aztec, NM 87410
Phone: (505) 334-6178 Fax: (505) 334-6170
District IV
1220 S. St. Francis Dr., Santa Fe, NM 87505
Phone: (505) 476-3460 Fax: (505) 476-3462

State of New Mexico
Energy, Minerals & Natural Resources Department
OIL CONSERVATION DIVISION
1220 South St. Francis Dr.
Santa Fe, NM 87505

Form C-102
Revised August 1, 2011
Submit one copy to appropriate
District Office
 AMENDED REPORT

WELL LOCATION AND ACREAGE DEDICATION PLAT

¹ API Number 30-015-	² Pool Code GA-04 S182728A	³ Pool Name WC-015 G-04 S232628M; BONE SPRING (98056)
⁴ Property Code	⁵ Property Name RENA 7 FED COM	
⁷ OGRID No. 327746	⁸ Operator Name FLAT CREEK RESOURCES, LLC	
		⁶ Well Number 603H
		⁹ Elevation 3,417'

¹⁰ Surface Location

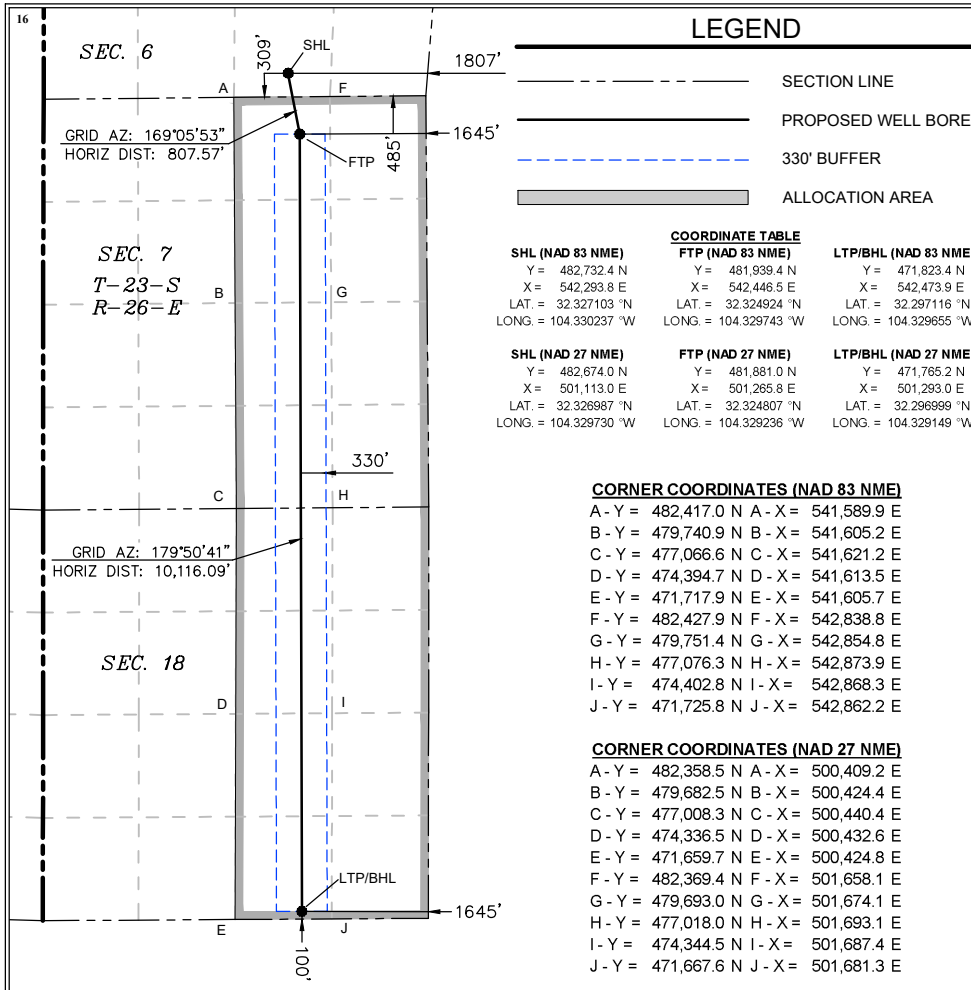
UL or lot no.	Section	Township	Range	Lot Idn	Feet from the	North/South line	Feet from the	East/West line	County
O	6	23S	26E		309	SOUTH	1807	EAST	EDDY

¹¹ Bottom Hole Location If Different From Surface

UL or lot no.	Section	Township	Range	Lot Idn	Feet from the	North/South line	Feet from the	East/West line	County
O	18	23S	26E		100	SOUTH	1645	EAST	EDDY

¹² Dedicated Acres	¹³ Joint or Infill	¹⁴ Consolidation Code	¹⁵ Order No.

No allowable will be assigned to this completion until all interests have been consolidated or a non-standard unit has been approved by the division.



¹⁷ OPERATOR CERTIFICATION

I hereby certify that the information contained herein is true and complete to the best of my knowledge and belief, and that this organization either owns a working interest or unleased mineral interest in the land including the proposed bottom hole location or has a right to drill this well at this location pursuant to a contract with an owner of such a mineral or working interest, or to a voluntary pooling agreement or a compulsory pooling order heretofore entered by the division.

Signature _____ Date _____

Printed Name _____

E-mail Address _____

¹⁸ SURVEYOR CERTIFICATION

I hereby certify that the well location shown on this plat was plotted from field notes of actual surveys made by me or under my supervision, and that the same is true and correct to the best of my belief.

07/19/2023
Date of Survey

Signature and Seal of Professional Surveyor: _____

MARK DILLON HARP 23786
Certificate Number

DB 618.005001.00-03

P:\618.005 Flat Creek\001 Rena 7-18 Lease\Wells\03 - Rena 7-18 State-Federal Com 603H\DWG\603H.dwg

District I
1625 N. French Dr., Hobbs, NM 88240
Phone: (575) 393-6161 Fax: (575) 393-0720
District II
811 S. First St., Artesia, NM 88210
Phone: (575) 748-1283 Fax: (575) 748-9720
District III
1000 Rio Brazos Road, Aztec, NM 87410
Phone: (505) 334-6178 Fax: (505) 334-6170
District IV
1220 S. St. Francis Dr., Santa Fe, NM 87505
Phone: (505) 476-3460 Fax: (505) 476-3462

State of New Mexico
Energy, Minerals & Natural Resources Department
OIL CONSERVATION DIVISION
1220 South St. Francis Dr.
Santa Fe, NM 87505

Form C-102
Revised August 1, 2011
Submit one copy to appropriate
District Office
 AMENDED REPORT

WELL LOCATION AND ACREAGE DEDICATION PLAT

¹ API Number 30-015-	² Pool Code GA-04 S182728A	³ Pool Name PURPLE SAGE; WOLFCAMP (GAS) (98220)
⁴ Property Code	⁵ Property Name RENA 7 FED COM	
⁷ OGRID No. 327746	⁸ Operator Name FLAT CREEK RESOURCES, LLC	
		⁶ Well Number 704H
		⁹ Elevation 3,416'

¹⁰ Surface Location

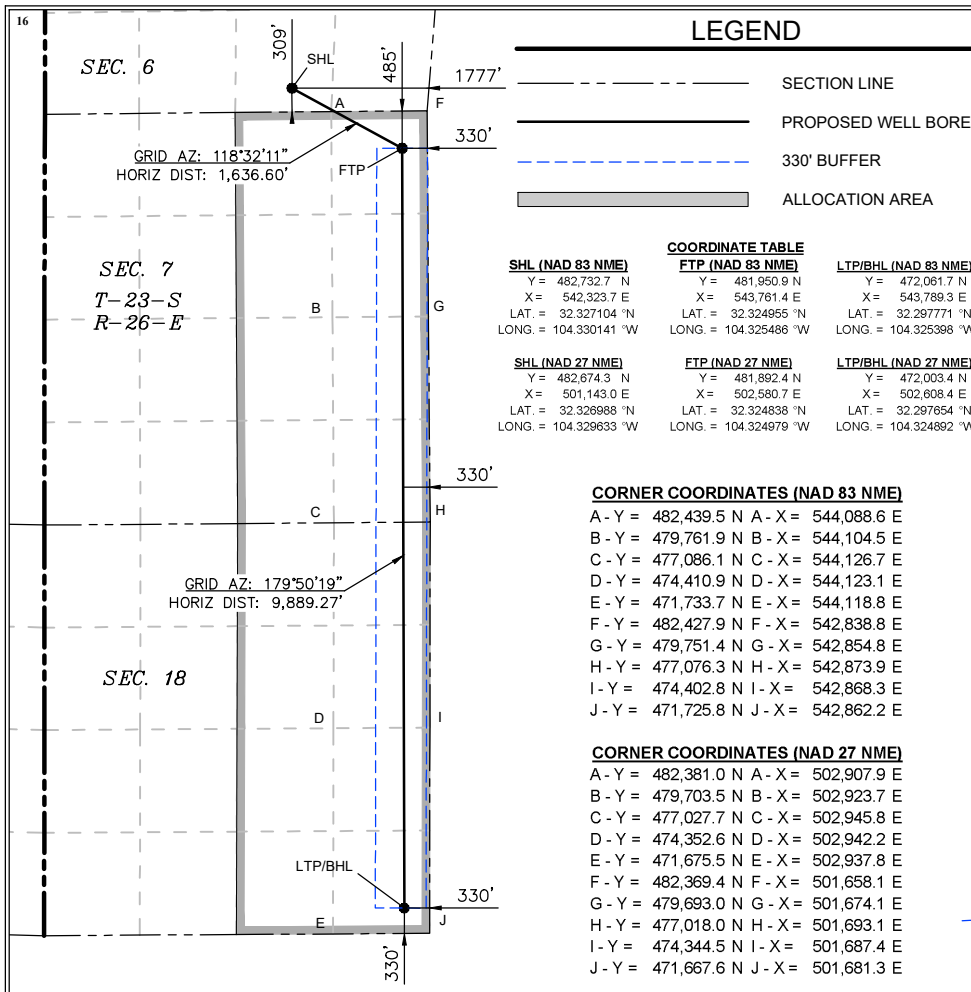
UL or lot no.	Section	Township	Range	Lot Idn	Feet from the	North/South line	Feet from the	East/West line	County
O	6	23S	26E		309	SOUTH	1777	EAST	EDDY

¹¹ Bottom Hole Location If Different From Surface

UL or lot no.	Section	Township	Range	Lot Idn	Feet from the	North/South line	Feet from the	East/West line	County
P	18	23S	26E		330	SOUTH	330	EAST	EDDY

¹² Dedicated Acres	¹³ Joint or Infill	¹⁴ Consolidation Code	¹⁵ Order No.

No allowable will be assigned to this completion until all interests have been consolidated or a non-standard unit has been approved by the division.



¹⁷ OPERATOR CERTIFICATION

I hereby certify that the information contained herein is true and complete to the best of my knowledge and belief, and that this organization either owns a working interest or unleased mineral interest in the land including the proposed bottom hole location or has a right to drill this well at this location pursuant to a contract with an owner of such a mineral or working interest, or to a voluntary pooling agreement or a compulsory pooling order heretofore entered by the division.

Signature _____ Date _____

Printed Name _____

E-mail Address _____

¹⁸ SURVEYOR CERTIFICATION

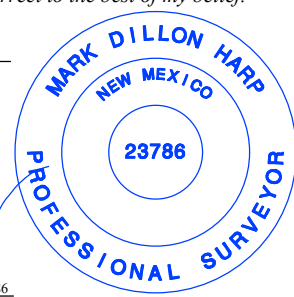
I hereby certify that the well location shown on this plat was plotted from field notes of actual surveys made by me or under my supervision, and that the same is true and correct to the best of my belief.

07/17/2023
Date of Survey

Signature and Seal of Professional Surveyor: _____

MARK DILLON HARP 23786
Certificate Number

DB 618.005001.00-04



P:\618.005 Flat Creek\001 Rena 7-18 Lease\Wells\1-04 - Rena 7-18 State-Federal Com 704H\DWG\704H.dwg