

**STATE OF NEW MEXICO  
ENERGY, MINERALS AND NATURAL RESOURCES DEPARTMENT  
OIL CONSERVATION DIVISION**

**APPLICATIONS OF CIMAREX ENERGY CO.  
FOR A HORIZONTAL SPACING UNIT  
AND COMPULSORY POOLING,  
LEA COUNTY, NEW MEXICO**

**CASE NOS. 23448-23455**

**APPLICATIONS OF CIMAREX ENERGY CO.  
FOR COMPULSORY POOLING,  
LEA COUNTY, NEW MEXICO**

**CASE NOS. 23594-23601**

**APPLICATIONS OF READ & STEVENS, INC.  
FOR COMPULSORY POOLING,  
LEA COUNTY, NEW MEXICO.**

**CASE NOS. 23508-23523**

**NOTICE OF SUPPLEMENTAL EXHIBIT C-12 AND REVISED EXHIBIT F-3**

Read & Stevens, Inc., applicant in the above-referenced cases, gives notice that it is filing the attached supplemental exhibit and revised exhibit for acceptance into the record.

**Supplemental Exhibit C-12** is a letter of support from Chase Oil Corporation, a working interest owner in the above-referenced contested cases.

**Revised Exhibit F-3** is a revised copy of the Gross Isopach – TBSG & Wolfcamp diagram correcting the Verna Rae wells used in the engineering analysis.

Respectfully submitted,

HOLLAND & HART LLP



---

Michael H. Feldewert  
Adam G. Rankin  
Julia Broggi  
Paula M. Vance  
Post Office Box 2208  
Santa Fe, New Mexico 87504-2208  
(505) 988-4421

(505) 983-6043 Facsimile  
mfeldewert@hollandhart.com  
agrarkin@hollandhart.com  
jbroggi@hollandhart.com  
pmvance@hollandhart.com

**ATTORNEYS FOR READ & STEVENS, INC. &  
PERMIAN RESOURCES OPERATING, LLC**

**CERTIFICATE OF SERVICE**

I hereby certify that on August 2, 2023, I served a copy of the foregoing document to the following counsel of record via Electronic Mail:

Darin C. Savage  
Andrew D. Schill  
William E. Zimsky  
214 McKenzie Street  
Santa Fe, New Mexico 87501  
darin@abadieschill.com  
andrew@abadieschill.com  
bill@abadieschill.com

***Attorneys for Cimarex Energy Co.***

Blake C. Jones  
1780 Hughes Landing Blvd., Suite 750  
The Woodlands, TX 77380  
blake.jones@steptoe-johnson.com

***Attorney for Northern Oil and Gas, Inc.***

Sealy Cavin, Jr.  
Scott S. Morgan  
Brandon D. Hajny  
P. O. Box 1216  
Albuquerque, NM 87103  
(505) 243-5400  
scavin@cilawnm.com  
smorgan@cilawnm.com  
bhajny@cilawnm.com

***Attorneys for Sandstone Properties, LLC***



---

Adam G. Rankin

# CHASE OIL CORPORATION

---

Post Office Box 1767  
Artesia, New Mexico 88211-1767  
Office (575) 746-9853  
FAX (575) 748-7374

August 1, 2023

Read & Stevens, Inc.  
c/o Permian Resources LLC  
300 N. Marienfeld Street, Suite 1000  
Midland, Texas 79701

RE: Bane Development  
Township 20 South, Range 34 East  
Sections 4 & 9

To Whom It May Concern:

The purpose of this letter is for Chase Oil Corporation, an impacted working interest owner in the above-referenced development, to adopt and ratify the statements and conclusions in the letter dated July 13, 2023 between Permian Resources LLC & Northern Oil & Gas, Inc. concerning the same.

Sincerely,

**Chase Oil Corporation**



Staci D. Sanders  
Vice President - Land



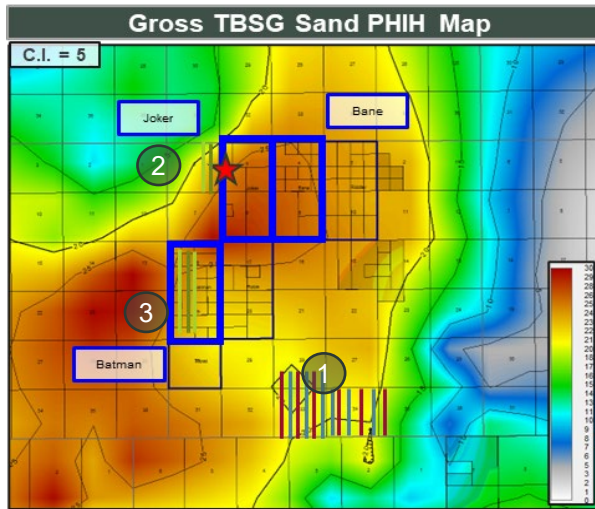
# Key Examples of TBSG/WFMP A Co-Development

## Limited Co-Development Testing in Geologically Analogous Rock

### Locator Maps Against Pay Mapping

#### TBSG

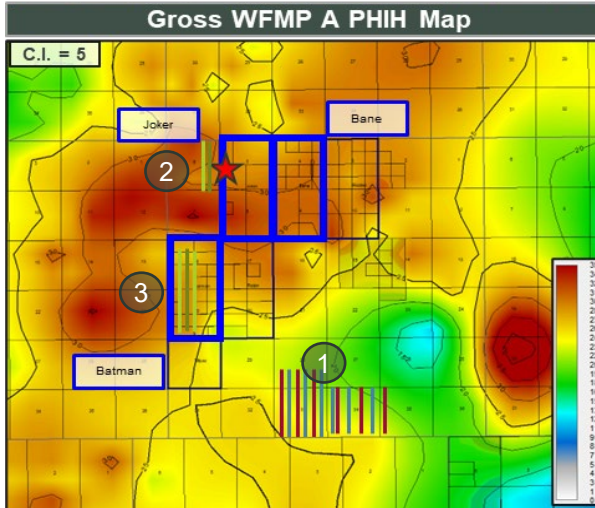
Consistent mapped pay quality in the TBSG Sand across key appraisals



#### WFMP\_A

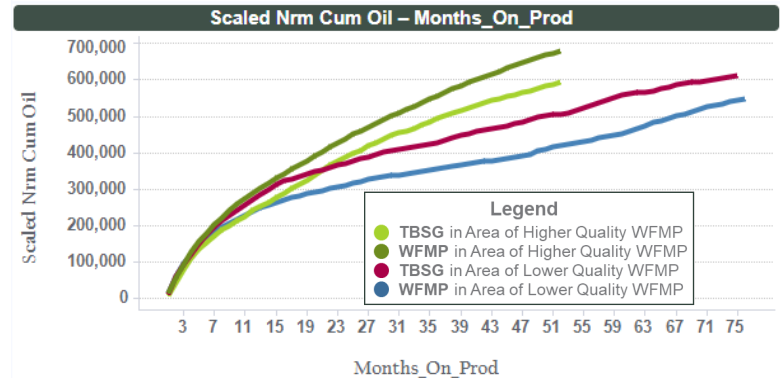
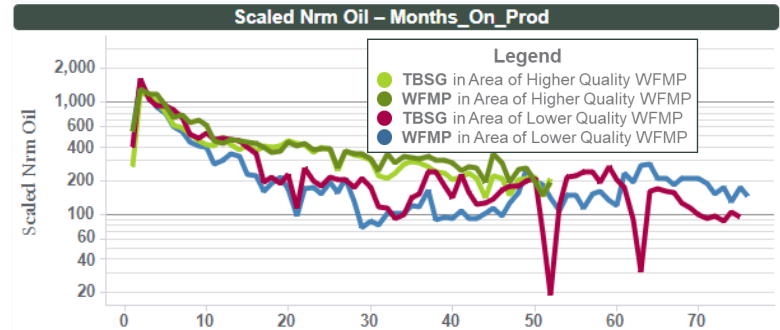
Consistent mapped pay quality in the areas 2, 3, and the Joker/Bane units

Degrading mapped pay quality area 1



① Denotes area of lower quality WFMP  
② Denotes area of higher quality WFMP

### Well Results



### Commentary

Examples of co-development between the TBSG and WFMP have returned very different results in areas of differing WFMP quality

When co-developed with the TBSG, WFMP\_A results have been very strong in the higher quality WFMP analogous to the pay in the Joker and Bane units

Production normalized to 10,000'