

STATE OF NEW MEXICO
ENERGY, MINERALS AND NATURAL RESOURCES DEPARTMENT
OIL CONSERVATION DIVISION

APPLICATION OF MRC PERMIAN
COMPANY FOR APPROVAL OF AN
OVERLAPPING HORIZONTAL WELL
SPACING UNIT AND COMPULSORY POOLING,
EDDY COUNTY, NEW MEXICO.

CASE NO. 23672

NOTICE OF REVISED EXHIBIT C-2

MRC Permian Company, applicant in the above-referenced case, gives notice that it is filing the attached exhibit for acceptance into the record.

Revised Exhibit C-2 is a revised copy of the C-102s that shows the First and Last Take Points for each well is at a standard location.

Respectfully submitted,

HOLLAND & HART LLP



Michael H. Feldewert
Adam G. Rankin
Julia Broggi
Paula M. Vance
Post Office Box 2208
Santa Fe, New Mexico 87504-2208
(505) 988-4421
(505) 983-6043 Facsimile
mfeldewert@hollandhart.com
agrarkin@hollandhart.com
jbroggi@hollandhart.com
pmvance@hollandhart.com

ATTORNEYS FOR MRC PERMIAN COMPANY

CERTIFICATE OF SERVICE

I hereby certify that on August 22, 2023, I served a copy of the foregoing document to the following counsel of record via Electronic Mail to:

Sharon T. Shaheen
Samantha H. Catalano
Post Office Box 2307
Santa Fe, NM 87504-2307
(505) 986-2678
sshahen@montand.com
scatalano@montand.com
ec:wmcginnis@montand.com

Attorneys for S.K. Warren Resources, LLC



Paula M. Vance

District I
1625 N. French Dr., Hobbs, NM 88240
Phone: (575) 393-6161 Fax: (575) 393-0720
District II
811 S. First St., Artesia, NM 88210
Phone: (575) 748-1283 Fax: (575) 748-9720
District III
1000 Rio Brazos Road, Aztec, NM 87410
Phone: (505) 334-6178 Fax: (505) 334-6170
District IV
1220 S. St. Francis Dr., Santa Fe, NM 87505
Phone: (505) 476-3460 Fax: (505) 476-3462

State of New Mexico
Energy, Minerals & Natural Resources
Department
OIL CONSERVATION DIVISION
1220 South St. Francis Dr.
Santa Fe, NM 87505

FORM C-102

Revised August 1, 2011

Submit one copy to appropriate
District Office

AMENDED REPORT

WELL LOCATION AND ACREAGE DEDICATION PLAT

¹ API Number		² Pool Code 15011		³ Pool Name Culebra Bluff; Bone Spring, South	
⁴ Property Code		⁵ Property Name SCOTT KING STATE COM			⁶ Well Number 111H
⁷ OGRID No. 228937		⁸ Operator Name MATADOR PRODUCTION COMPANY			⁹ Elevation 2981'

¹⁰Surface Location

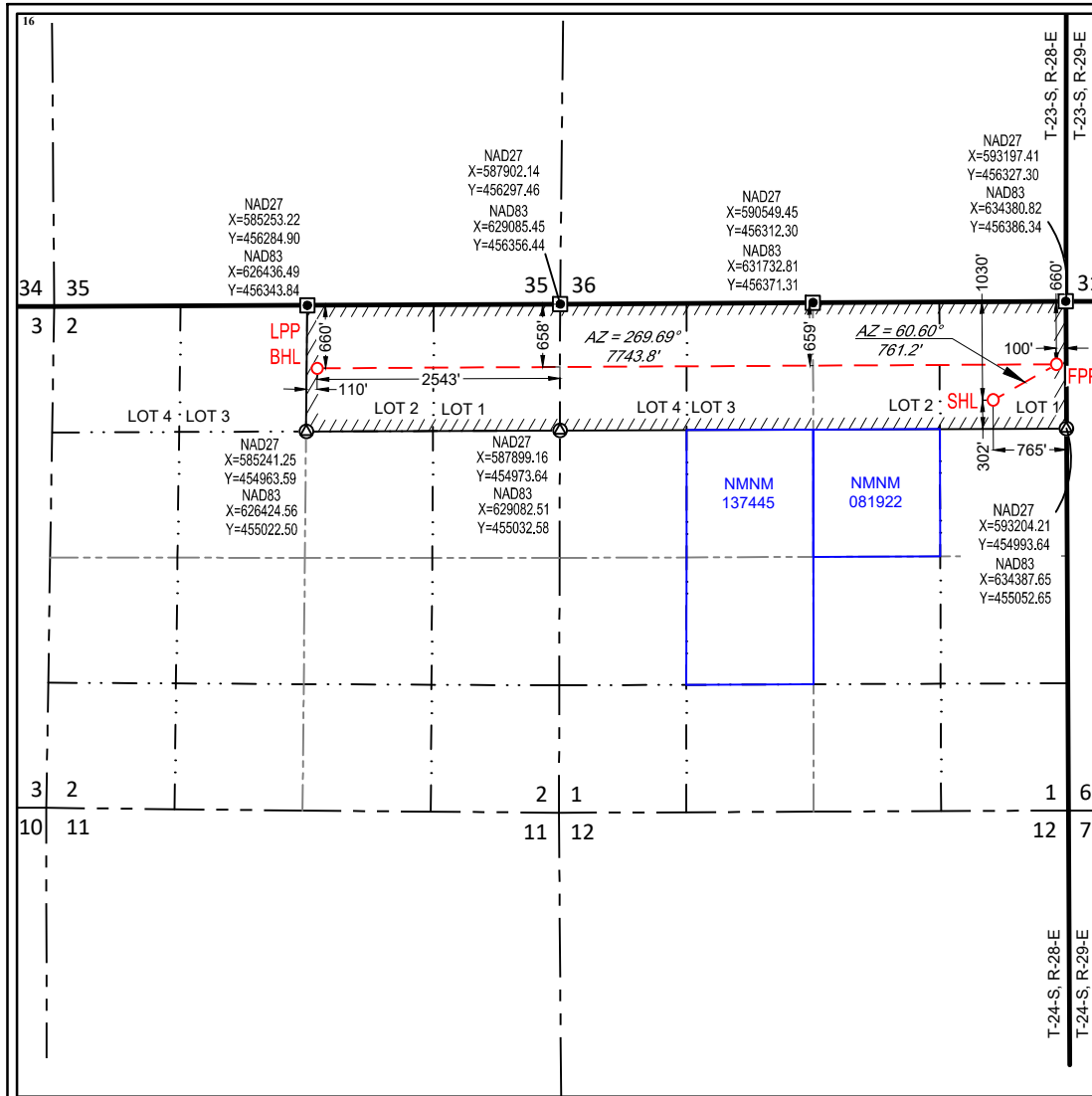
UL or lot no.	Section	Township	Range	Lot Idn	Feet from the	North/South line	Feet from the	East/West line	County
1	1	24-S	28-E	-	1030'	NORTH	765'	EAST	EDDY

¹¹Bottom Hole Location If Different From Surface

UL or lot no.	Section	Township	Range	Lot Idn	Feet from the	North/South line	Feet from the	East/West line	County
2	2	24-S	28-E	-	660'	NORTH	2543'	EAST	EDDY

¹² Dedicated Acres 239.00	¹³ Joint or Infill	¹⁴ Consolidation Code	¹⁵ Order No.
---	-------------------------------	----------------------------------	-------------------------

No allowable will be assigned to this completion until all interests have been consolidated or a non-standard unit has been approved by the division.



¹⁷OPERATOR CERTIFICATION

I hereby certify that the information contained herein is true and complete to the best of my knowledge and belief, and that this organization either owns a working interest or unleased mineral interest in the land including the proposed bottom hole location or has a right to drill this well at this location pursuant to a contract with an owner of such a mineral or working interest, or to a voluntary pooling agreement or a compulsory pooling order heretofore entered by the division.

Signature _____ Date _____

Printed Name _____

E-mail Address _____

¹⁸SURVEYOR CERTIFICATION

I hereby certify that the well location shown on this plat was plotted from field notes of actual surveys made by me or under my supervision, and that the same is true to the best of my belief.

01/05/2023

Date of Survey
Signature and Seal of Professional Surveyor



Certificate Number

NEW MEXICO EAST
NAD 1927

SURFACE LOCATION (SHL)	FIRST PERF. POINT (FPP)
X=592438 Y=455293 LAT.: N 32.2513639 LONG.: W 104.0343242	X=593101 Y=455667 LAT.: N 32.2523860 LONG.: W 104.0321756

LAST PERF. POINT (LPP)	BOTTOM HOLE LOCATION (BHL)
X=585357 Y=455625 LAT.: N 32.2523295 LONG.: W 104.0572243	X=626541 Y=455684 LAT.: N 32.2524510 LONG.: W 104.0577169

BEFORE THE OIL CONSERVATION DIVISION
Santa Fe, New Mexico
Revised Exhibit No. C-2
Submitted by: MRC Permian Company
Hearing Date: August 17, 2023
Case No. 23672

District I
1625 N. French Dr., Hobbs, NM 88240
Phone: (575) 393-6161 Fax: (575) 393-0720
District II
811 S. First St., Artesia, NM 88210
Phone: (575) 748-1283 Fax: (575) 748-9720
District III
1000 Rio Brazos Road, Aztec, NM 87410
Phone: (505) 334-6178 Fax: (505) 334-6170
District IV
1220 S. St. Francis Dr., Santa Fe, NM 87505
Phone: (505) 476-3460 Fax: (505) 476-3462

State of New Mexico
Energy, Minerals & Natural Resources
Department
OIL CONSERVATION DIVISION
1220 South St. Francis Dr.
Santa Fe, NM 87505

FORM C-102

Revised August 1, 2011

Submit one copy to appropriate

District Office

AMENDED REPORT

WELL LOCATION AND ACREAGE DEDICATION PLAT

¹ API Number		² Pool Code 15011		³ Pool Name Culebra Bluff; Bone Spring, South	
⁴ Property Code		⁵ Property Name SCOTT KING STATE COM			⁶ Well Number 121H
⁷ OGRID No. 228937		⁸ Operator Name MATADOR PRODUCTION COMPANY			⁹ Elevation 2981'

¹⁰Surface Location

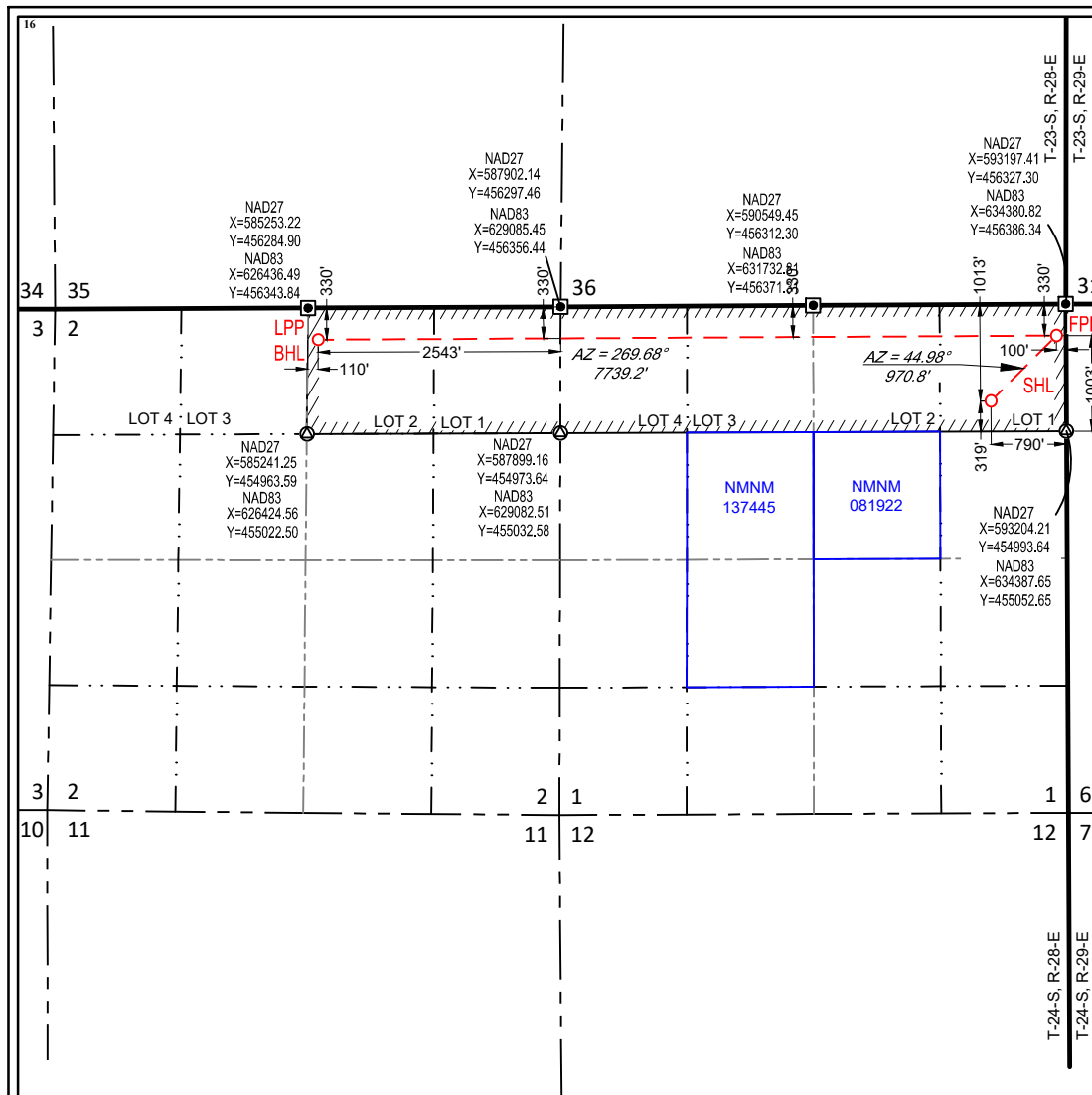
UL or lot no.	Section	Township	Range	Lot Idn	Feet from the	North/South line	Feet from the	East/West line	County
1	1	24-S	28-E	-	1013'	NORTH	790'	EAST	EDDY

¹¹Bottom Hole Location If Different From Surface

UL or lot no.	Section	Township	Range	Lot Idn	Feet from the	North/South line	Feet from the	East/West line	County
2	2	24-S	28-E	-	332'	NORTH	2541'	EAST	EDDY

¹² Dedicated Acres 239.00	¹³ Joint or Infill	¹⁴ Consolidation Code	¹⁵ Order No.
---	-------------------------------	----------------------------------	-------------------------

No allowable will be assigned to this completion until all interests have been consolidated or a non-standard unit has been approved by the division.



¹⁷OPERATOR CERTIFICATION
I hereby certify that the information contained herein is true and complete to the best of my knowledge and belief, and that this organization either owns a working interest or unleased mineral interest in the land including the proposed bottom hole location or has a right to drill this well at this location pursuant to a contract with an owner of such a mineral or working interest, or to a voluntary pooling agreement or a compulsory pooling order heretofore entered by the division.

Signature _____ Date _____

Printed Name _____

E-mail Address _____

¹⁸SURVEYOR CERTIFICATION
I hereby certify that the well location shown on this plat was plotted from field notes of actual surveys made by me or under my supervision, and that the same is true to the best of my belief.

01/05/2023

Date of Survey
Signature and Seal of Professional Surveyor



Certificate Number

NEW MEXICO EAST
NAD 1927

SURFACE LOCATION (SHL)	FIRST PERF. POINT (FPP)
X=592413 Y=455310 LAT.: N 32.2514105 LONG.: W 104.0344041	X=593099 Y=455997 LAT.: N 32.2532927 LONG.: W 104.0321782

LAST PERF. POINT (LPP)	BOTTOM HOLE LOCATION (BHL)
X=585360 Y=455953 LAT.: N 32.2532306 LONG.: W 104.0572120	X=626543 Y=456012 LAT.: N 32.2533521 LONG.: W 104.0577046

NEW MEXICO EAST
NAD 1983

SURFACE LOCATION (SHL)	FIRST PERF. POINT (FPP)	LAST PERF. POINT (LPP)	BOTTOM HOLE LOCATION (BHL)
1013' FNL - SEC. 1 790' FEL - SEC. 1 X=633596 Y=455369 LAT.: N 32.2515323 LONG.: W 104.0348957	330' FNL - SEC. 1 100' FEL - SEC. 1 X=634283 Y=456056 LAT.: N 32.2534145 LONG.: W 104.0326698	332' FNL - SEC. 2 2541' FEL - SEC. 2 X=626543 Y=456012 LAT.: N 32.2533521 LONG.: W 104.0577046	

District I
1625 N. French Dr., Hobbs, NM 88240
Phone: (575) 393-6161 Fax: (575) 393-0720
District II
811 S. First St., Artesia, NM 88210
Phone: (575) 748-1283 Fax: (575) 748-9720
District III
1000 Rio Brazos Road, Aztec, NM 87410
Phone: (505) 334-6178 Fax: (505) 334-6170
District IV
1220 S. St. Francis Dr., Santa Fe, NM 87505
Phone: (505) 476-3460 Fax: (505) 476-3462

State of New Mexico
Energy, Minerals & Natural Resources
Department
OIL CONSERVATION DIVISION
1220 South St. Francis Dr.
Santa Fe, NM 87505

FORM C-102

Revised August 1, 2011

Submit one copy to appropriate

District Office

AMENDED REPORT

WELL LOCATION AND ACREAGE DEDICATION PLAT

¹ API Number		² Pool Code 15011		³ Pool Name Culebra Bluff; Bone Spring, South	
⁴ Property Code		⁵ Property Name SCOTT KING STATE COM			⁶ Well Number 131H
⁷ OGRID No. 228937		⁸ Operator Name MATADOR PRODUCTION COMPANY			⁹ Elevation 2979'

¹⁰Surface Location

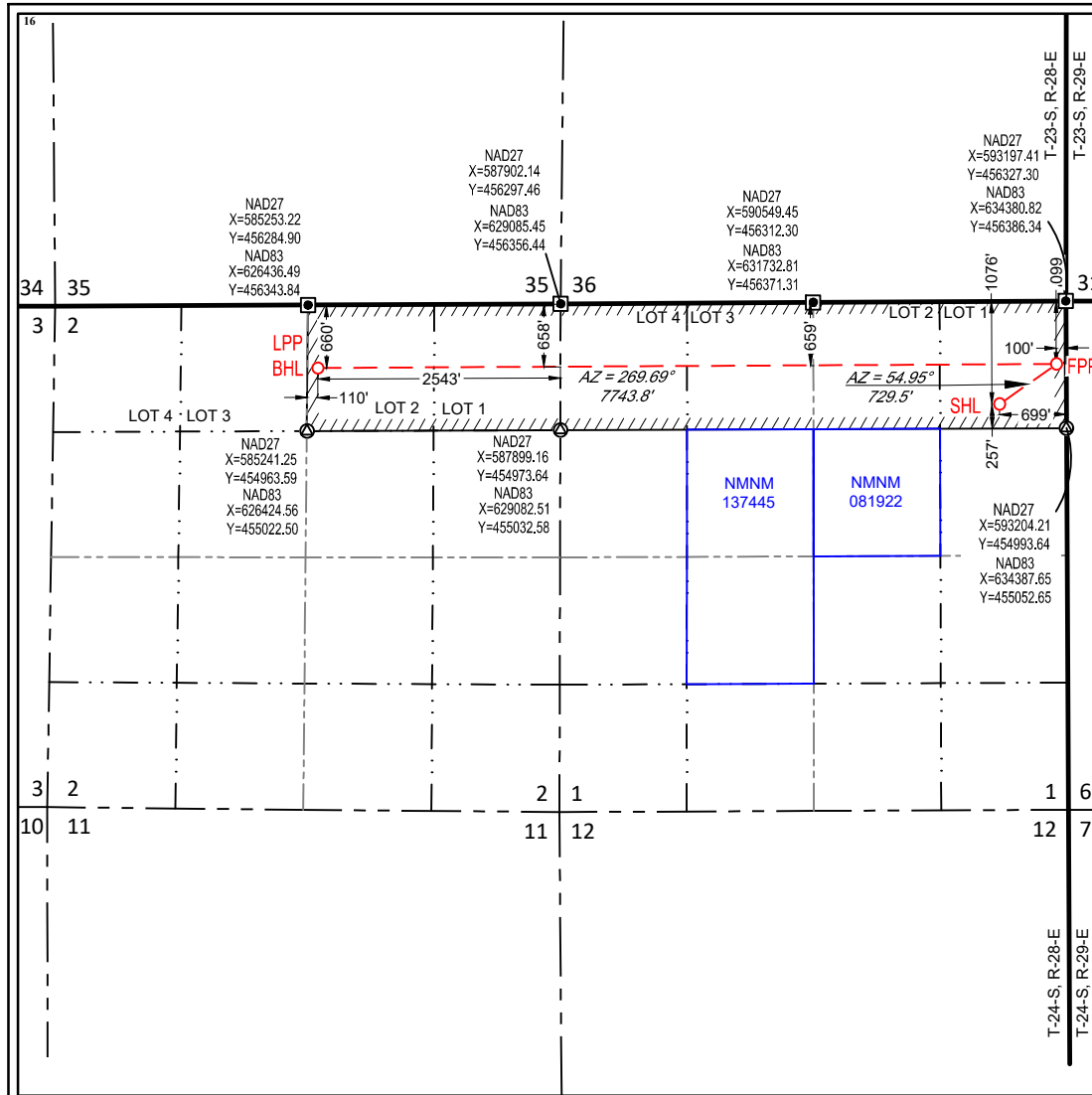
UL or lot no.	Section	Township	Range	Lot Idn	Feet from the	North/South line	Feet from the	East/West line	County
1	1	24-S	28-E	-	1076'	NORTH	699'	EAST	EDDY

¹¹Bottom Hole Location If Different From Surface

UL or lot no.	Section	Township	Range	Lot Idn	Feet from the	North/South line	Feet from the	East/West line	County
2	2	24-S	28-E	-	660'	NORTH	2543'	EAST	EDDY

¹² Dedicated Acres 239.00	¹³ Joint or Infill	¹⁴ Consolidation Code	¹⁵ Order No.
---	-------------------------------	----------------------------------	-------------------------

No allowable will be assigned to this completion until all interests have been consolidated or a non-standard unit has been approved by the division.



¹⁷OPERATOR CERTIFICATION

I hereby certify that the information contained herein is true and complete to the best of my knowledge and belief, and that this organization either owns a working interest or unleased mineral interest in the land including the proposed bottom hole location or has a right to drill this well at this location pursuant to a contract with an owner of such a mineral or working interest, or to a voluntary pooling agreement or a compulsory pooling order heretofore entered by the division.

Signature _____ Date _____

Printed Name _____

E-mail Address _____

¹⁸SURVEYOR CERTIFICATION

I hereby certify that the well location shown on this plat was plotted from field notes of actual surveys made by me or under my supervision, and that the same is true to the best of my belief.

01/05/2023

Date of Survey
Signature and Seal of Professional Surveyor



Certificate Number _____

NEW MEXICO EAST
NAD 1927

SURFACE LOCATION (SHL)	FIRST PERF. POINT (FPP)
X=592504 Y=455248 LAT.: N 32.2512390 LONG.: W 104.0341113	X=593101 Y=455667 LAT.: N 32.2523860 LONG.: W 104.0321756

LAST PERF. POINT (LPP)	BOTTOM HOLE LOCATION (BHL)
X=585357 Y=455625 LAT.: N 32.2523295 LONG.: W 104.0572243	X=626541 Y=455684 LAT.: N 32.2524510 LONG.: W 104.0577169

NEW MEXICO EAST
NAD 1983

SURFACE LOCATION (SHL)	FIRST PERF. POINT (FPP)	LAST PERF. POINT (LPP)	BOTTOM HOLE LOCATION (BHL)
1076' FNL - SEC. 1 699' FEL - SEC. 1 X=633687 Y=455307 LAT.: N 32.2513608 LONG.: W 104.0346029	660' FNL - SEC. 1 100' FEL - SEC. 1 X=634284 Y=455726 LAT.: N 32.2525078 LONG.: W 104.0326672	660' FNL - SEC. 2 2543' FEL - SEC. 2 X=626541 Y=455684 LAT.: N 32.2524510 LONG.: W 104.0577169	