

**BEFORE THE OIL CONSERVATION DIVISION  
EXAMINER HEARING NOVEMBER 2, 2023**

**CASE NOS. 23614-23617**  
**EXHIBITS B-7 THRU C**

*DOC GOODEN SWD #1 WELL*  
*HERNANDEZ SWD #1 WELL*  
*HODGES SWD #1 WELL*  
*SEAVERS SWD #1 WELL*

**LEA COUNTY, NEW MEXICO**





Chevron USA  
30-025-29621  
KB: 3,602' 2/18/1987

EMSU #461 WSW  
I-9-215-36E  
TD: 5,000'

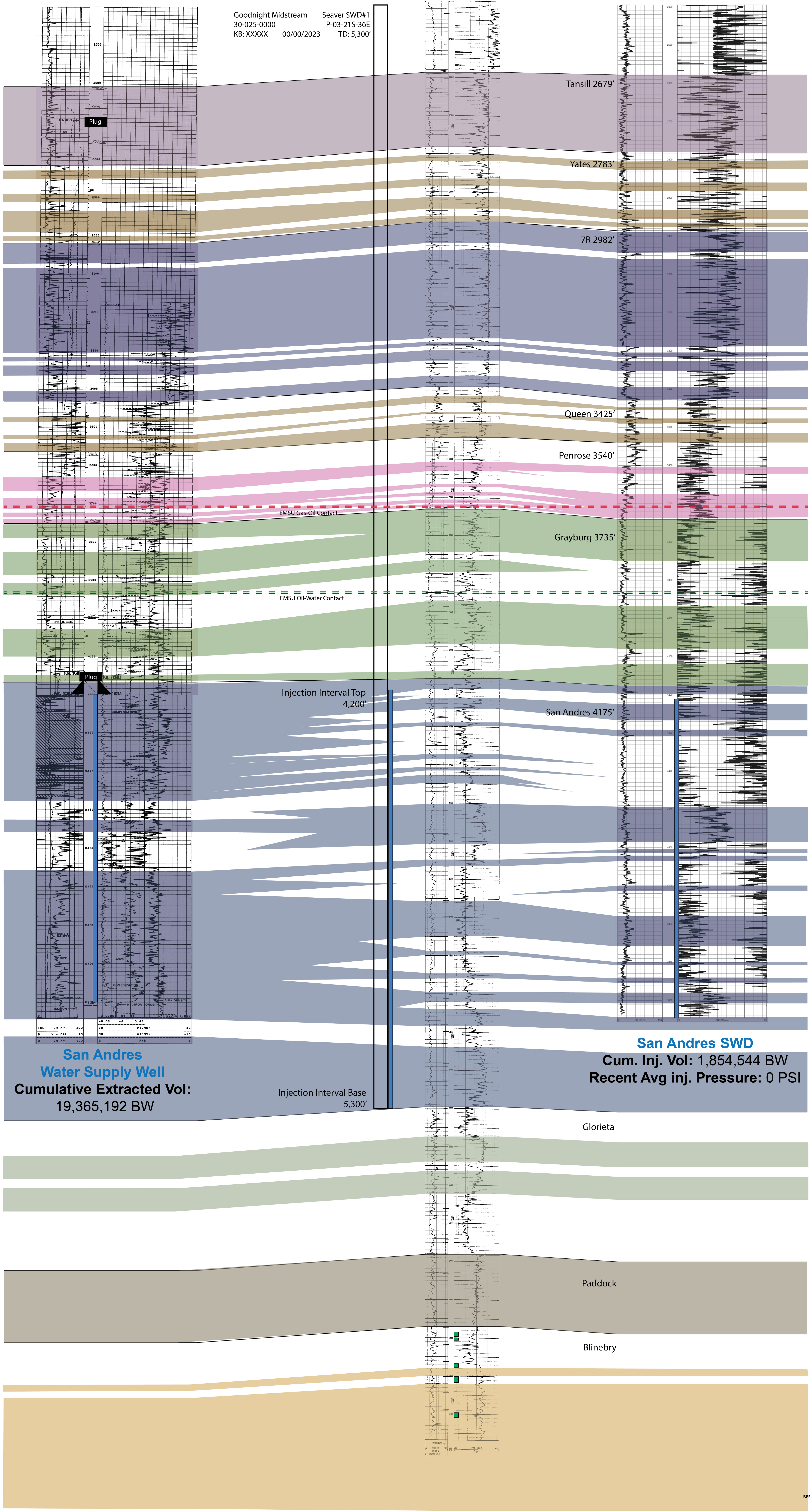
Empire New Mexico  
30-025-33778  
KB: 3,605' 1/28/1998

John D Knox #14  
J-10-215-36E  
TD: 6,170'

Rice Operating Co.  
30-025-46577  
KB: 3,586' 6/29/2020

N 11 #001  
N-11-215-36E  
TD: 5,100'

Goodnight Midstream Seaver SWD#1  
30-025-0000 P-03-215-36E  
KB: XXXXX 00/00/2023 TD: 5,300'



Tansill 2679'

Yates 2783'

7R 2982'

Queen 3425'

Penrose 3540'

EMSU Gas-Oil Contact

Grayburg 3735'

EMSU Oil-Water Contact

Injection Interval Top  
4,200'

San Andres 4175'

Inj. Interval Top  
4210'

Inj. Interval Base  
5100'

**San Andres  
Water Supply Well**  
Cumulative Extracted Vol:  
19,365,192 BW

Injection Interval Base  
5,300'

**San Andres SWD**  
Cum. Inj. Vol: 1,854,544 BW  
Recent Avg inj. Pressure: 0 PSI

Glorieta

Paddock

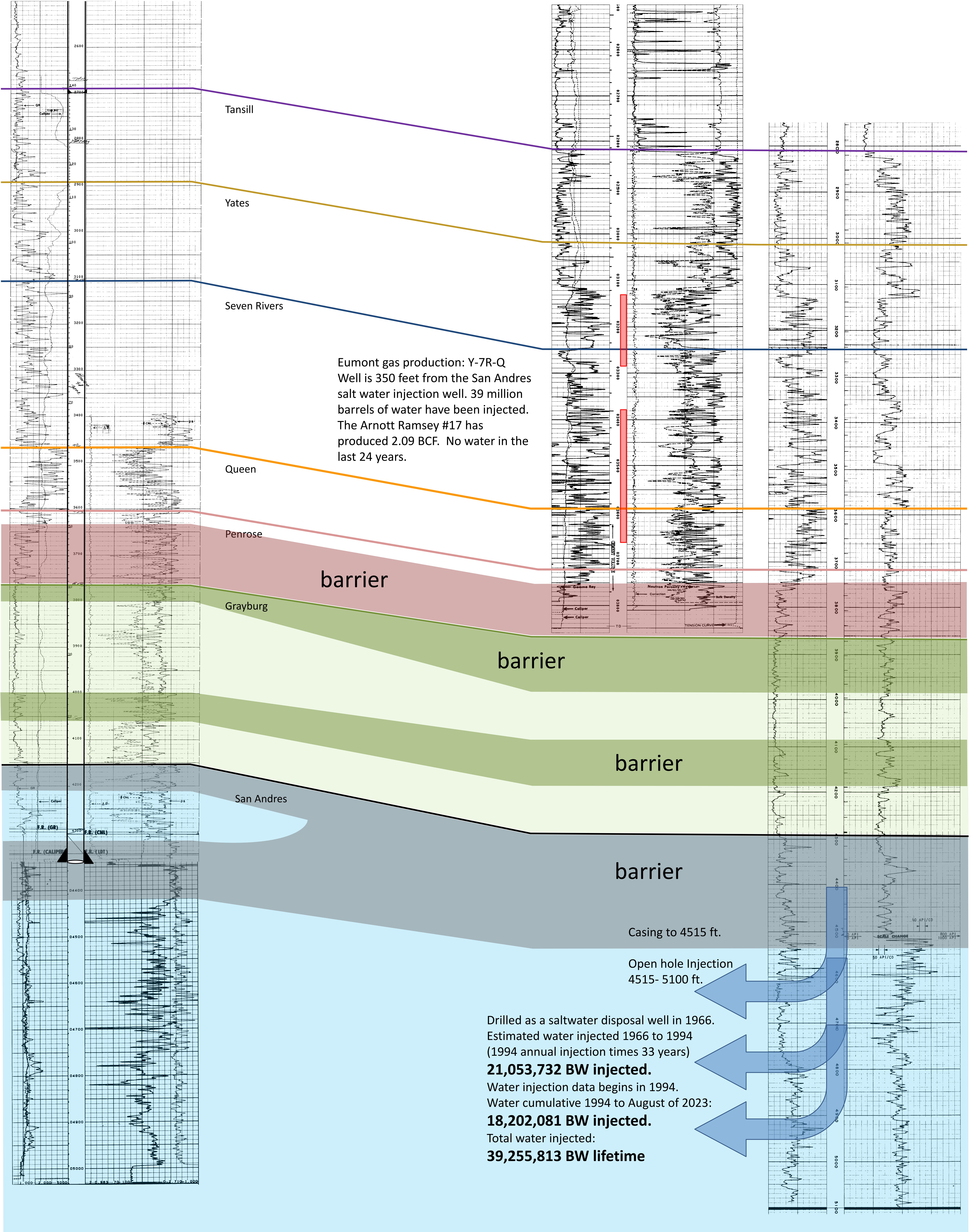
Blinebry



Chevron EMSU 460 WSW  
San Andres Water Supply Well  
c - 8 - 21S - 36E KB: 3603  
30 - 025 - 29620 Logged: 1-18-87

Penroc (Chevron) Arnott Ramsay (NCT-C) No17  
Eumont Y-7R-Q progas  
L - 21 - 21S - 36E KB: 3604  
30 - 025 - 32440 Logged: 03-09-1994

Rice Engineering EME SWD L-21  
Water Disposal - San Andres  
L - 21 - 21S - 36E KB: 3601  
30 - 025 - 21852 Completed: 09-22-66



Drilled as a saltwater disposal well in 1966.  
Estimated water injected 1966 to 1994  
(1994 annual injection times 33 years)  
**21,053,732 BW injected.**  
Water injection data begins in 1994.  
Water cumulative 1994 to August of 2023:  
**18,202,081 BW injected.**  
Total water injected:  
**39,255,813 BW lifetime**



## Wells Providing Water for the EMSU Grayburg Water Flood

<b>EMSU Water Supply Well NAME</b>	<b>API</b>	<b>Location</b>	<b>Status</b>	<b>Start</b>	<b>End</b>	<b>Years as Active WSW</b>	<b>Documented Measured Volumes</b>	<b>Reconstructed from Tests and Modeled Averages</b>	<b>Total Water Bbls extracted from the San Andres</b>
Chevron WSW EMSU #457	025 29149	Q - 5 - 21S - 36E	T&A	1987	2004	17	27,292,824	14,876,823	42,169,647
Chevron WSW EMSU #458	025 29618	I - 4 - 21S - 36E	T&A	1987	2012	25	35,546,076	13,986,538	49,532,614
Chevron WSW EMSU #459	025 29826	B - 5 - 21S - 36E	Active	1987	2023	36	75,869,112	24,744,166	100,613,278
Chevron WSW EMSU #460	025 29620	C - 8 - 21S - 36E	P&A	1987	2002	15	33,145,521	31,972,778	65,118,299
Chevron WSW EMSU #461	025 29621	I - 9 - 21S - 36E	P&A	1987	2002	15	8,452,395	10,912,797	19,365,192
Chevron WSW EMSU #462	025 29622	L - 9 - 21S - 36E	Convert to Oil	1987	2005	18	45,502,836	25,974,689	71,477,525
<b>Sum:</b>							<b>225,808,764</b>	<b>122,467,791</b>	<b>348,276,555</b>

OCD case document 08397\_4659 EMSU Tech Committee Report provides monthly WSW production volumes for 1978 and 1988.

OCD case document 08397\_4658 EMSU Tech Committee Report provides monthly WSW production volumes for 1989.

Years 1989 to 1994 were reconstructed from well tests and Tech Committee Charts.

OCD online database was used for years 1994 to present.





Preston McGuire  
Geology and Reservoir Engineering Manager  
Goodnight Midstream, LLC  
5910 North Central Expressway, Suite 850  
Dallas, Texas 75206

RE: Goodnight Midstream, LLC Doc Gooden SWD well permit

Lot P, Section 3, Township 21S Range 36E  
Lea County, New Mexico

Goodnight Midstream conducted a hydrogeologic investigation related to the proposed injection well. The scope of the investigation was to determine if there is any hydrologic connection between the proposed injection interval and any sources of underground drinking water.

Goodnight geologist performed an analysis of subsurface well log data. It is our conclusion that there is no evidence of faulting in the data we evaluated at the depths that are being considered. There are small scale flexures which may or may not be associated with small scale faults. None of these flexures extend above the Wolfcamp unconformity and are not seen in the Leonard intervals.

Goodnight acquired and evaluated 3D seismic to the west but does not cover the lands that this salt water disposal well is located upon. This data shows the geologic setting in the area. No faults are seen in the Artesia Group, San Andres, Glorieta, or Leonard series. The San Andres contains small scale flexures and changes in seismic velocity that may indicate karsting. These flexures and velocity anomalies are being used to target disposal reservoir opportunities. The Grayburg thickens over the San Andres sag. There is also a thickening of the Yates relative to the low in the San Andres. These stratigraphic changes do not indicate the presence of faulting and there is no communication between these intervals.

Water has been disposed into the San Andres in this area since 1966. There is a good record of pressure separation. Production from the Artesia group has proceeded without interruption or encroachment from San Andres disposal for more than 50 years. Containment and isolation from the hydrocarbon intervals would then also be isolated from any sources of fresh water above.

We see no evidence of faulting that would extend to or form a connection between the injection zone and any underground sources of drinking water.

  
\_\_\_\_\_  
Preston McGuire  
Geology and Reservoir Engineering Manager  
Goodnight Midstream, LLC

10/23/23  
\_\_\_\_\_  
Date

**BEFORE THE OIL CONSERVATION DIVISION**  
Santa Fe, New Mexico  
Exhibit No. B-10  
Submitted by: Goodnight Midstream Permian, LLC  
Hearing Date: November 2, 2023  
Case Nos. 23614-23617





Preston McGuire  
Geology and Reservoir Engineering Manager  
Goodnight Midstream, LLC  
5910 North Central Expressway, Suite 850  
Dallas, Texas 75206

RE: Goodnight Midstream, LLC Hernandez SWD well permit

Lot P, Section 10, Township 21S Range 36E  
Lea County, New Mexico

Goodnight Midstream conducted a hydrogeologic investigation related to the proposed injection well. The scope of the investigation was to determine if there is any hydrologic connection between the proposed injection interval and any sources of underground drinking water.

Goodnight geologist performed an analysis of subsurface well log data. It is our conclusion that there is no evidence of faulting in the data we evaluated at the depths that are being considered. There are small scale flexures which may or may not be associated with small scale faults. None of these flexures extend above the Wolfcamp unconformity and are not seen in the Leonard intervals.

Goodnight acquired and evaluated 3D seismic to the west but does not cover the lands that this salt water disposal well is located upon. This data shows the geologic setting in the area. No faults are seen in the Artesia Group, San Andres, Glorieta, or Leonard series. The San Andres contains small scale flexures and changes in seismic velocity that may indicate karsting. These flexures and velocity anomalies are being used to target disposal reservoir opportunities. The Grayburg thickens over the San Andres sag. There is also a thickening of the Yates relative to the low in the San Andres. These stratigraphic changes do not indicate the presence of faulting and there is no communication between these intervals.

Water has been disposed into the San Andres in this area since 1966. There is a good record of pressure separation. Production from the Artesia group has proceeded without interruption or encroachment from San Andres disposal for more than 50 years. Containment and isolation from the hydrocarbon intervals would then also be isolated from any sources of fresh water above.

We see no evidence of faulting that would extend to or form a connection between the injection zone and any underground sources of drinking water.

  
\_\_\_\_\_  
Preston McGuire  
Geology and Reservoir Engineering Manager  
Goodnight Midstream, LLC

10/23/23  
\_\_\_\_\_  
Date

**BEFORE THE OIL CONSERVATION DIVISION**  
**Santa Fe, New Mexico**  
**Exhibit No. B-11**  
**Submitted by: Goodnight Midstream Permian, LLC**  
**Hearing Date: November 2, 2023**  
**Case Nos. 23614-23617**





Preston McGuire  
Geology and Reservoir Engineering Manager  
Goodnight Midstream, LLC  
5910 North Central Expressway, Suite 850  
Dallas, Texas 75206

RE: Goodnight Midstream, LLC Hodges SWD well permit

Lot 11, Section 4, Township 21S Range 36E  
Lea County, New Mexico

Goodnight Midstream conducted a hydrogeologic investigation related to the proposed injection well. The scope of the investigation was to determine if there is any hydrologic connection between the proposed injection interval and any sources of underground drinking water.

Goodnight geologist performed an analysis of subsurface well log data. It is our conclusion that there is no evidence of faulting in the data we evaluated at the depths that are being considered. There are small scale flexures which may or may not be associated with small scale faults. None of these flexures extend above the Wolfcamp unconformity and are not seen in the Leonard intervals.

Goodnight acquired and evaluated 3D seismic covering the lands that this salt water disposal well is located upon. This data shows the geologic setting in the area. No faults are seen in the Artesia Group, San Andres, Glorieta, or Leonard series. The San Andres contains small scale flexures and changes in seismic velocity that may indicate karsting. These flexures and velocity anomalies are being used to target disposal reservoir opportunities. The Grayburg thickens over the San Andres sag. There is also a thickening of the Yates relative to the low in the San Andres. These stratigraphic changes do not indicate the presence of faulting and there is no communication between these intervals.

Water has been disposed into the San Andres in this area since 1966. There is a good record of pressure separation. Production from the Artesia group has proceeded without interruption or encroachment from San Andres disposal for more than 50 years. Containment and isolation from the hydrocarbon intervals would then also be isolated from any sources of fresh water above.

We see no evidence of faulting that would extend to or form a connection between the injection zone and any underground sources of drinking water.

  
\_\_\_\_\_  
Preston McGuire  
Geology and Reservoir Engineering Manager  
Goodnight Midstream, LLC

10/23/23  
Date

**BEFORE THE OIL CONSERVATION DIVISION**  
Santa Fe, New Mexico  
Exhibit No. B-12  
Submitted by: Goodnight Midstream Permian, LLC  
Hearing Date: November 2, 2023  
Case Nos. 23614-23617





Preston McGuire  
Geology and Reservoir Engineering Manager  
Goodnight Midstream, LLC  
5910 North Central Expressway, Suite 850  
Dallas, Texas 75206

RE: Goodnight Midstream, LLC Seaver SWD well permit

Lot K, Section 10, Township 21S Range 36E  
Lea County, New Mexico

Goodnight Midstream conducted a hydrogeologic investigation related to the proposed injection well. The scope of the investigation was to determine if there is any hydrologic connection between the proposed injection interval and any sources of underground drinking water.

Goodnight geologist performed an analysis of subsurface well log data. It is our conclusion that there is no evidence of faulting in the data we evaluated at the depths that are being considered. There are small scale flexures which may or may not be associated with small scale faults. None of these flexures extend above the Wolfcamp unconformity and are not seen in the Leonard intervals.

Goodnight acquired and evaluated 3D seismic to the west but does not cover the lands that this salt water disposal well is located upon. This data shows the geologic setting in the area. No faults are seen in the Artesia Group, San Andres, Glorieta, or Leonard series. The San Andres contains small scale flexures and changes in seismic velocity that may indicate karsting. These flexures and velocity anomalies are being used to target disposal reservoir opportunities. The Grayburg thickens over the San Andres sag. There is also a thickening of the Yates relative to the low in the San Andres. These stratigraphic changes do not indicate the presence of faulting and there is no communication between these intervals.

Water has been disposed into the San Andres in this area since 1966. There is a good record of pressure separation. Production from the Artesia group has proceeded without interruption or encroachment from San Andres disposal for more than 50 years. Containment and isolation from the hydrocarbon intervals would then also be isolated from any sources of fresh water above.

We see no evidence of faulting that would extend to or form a connection between the injection zone and any underground sources of drinking water.

  
\_\_\_\_\_  
Preston McGuire  
Geology and Reservoir Engineering Manager  
Goodnight Midstream, LLC

10/23/23  
\_\_\_\_\_  
Date

**BEFORE THE OIL CONSERVATION DIVISION**  
**Santa Fe, New Mexico**  
**Exhibit No. B-13**  
**Submitted by: Goodnight Midstream Permits, LLC**  
**LLC Hearing Date: November 2, 2023**  
**Case Nos. 23614-23617**



Case No. 8397

November 7, 1984

BEFORE THE OIL CONSERVATION DIVISION

Santa Fe, New Mexico

Exhibit No. C-7

Submitted by: Goodnight Midstream, LLC

Hearing Date: September 15, 2022

Case No. 22626

# EUNICE MONUMENT SOUTH SECONDARY RECOVERY UNIT

(Royalty Owners Overview)  
LEA COUNTY, NEW MEXICO

BEFORE THE OIL CONSERVATION DIVISION

Santa Fe, New Mexico

Exhibit No. B-14

Submitted by: Goodnight Midstream Permian, LLC

Hearing Date: November 2, 2023

Case Nos. 23614-23617



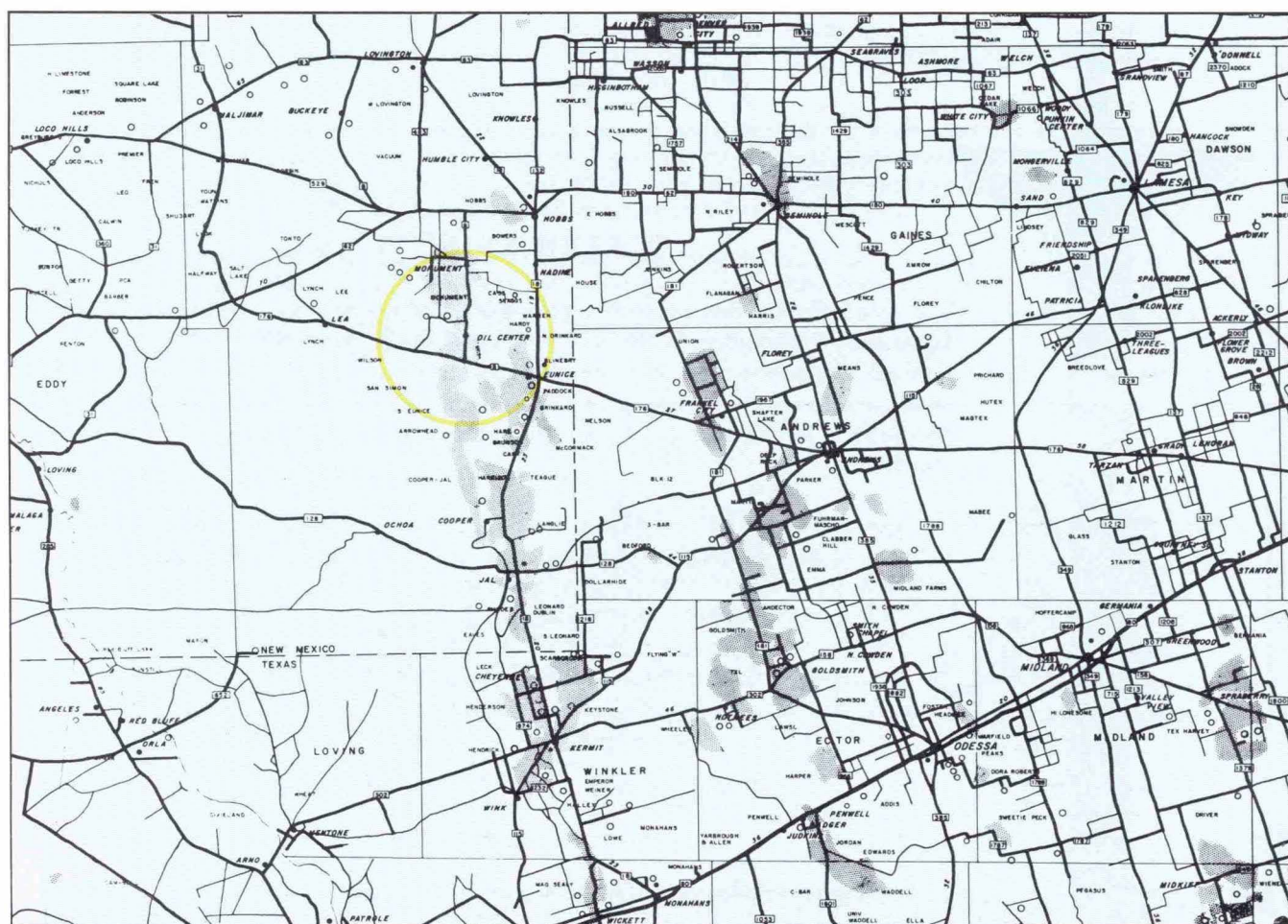
# INTRODUCTION

The Proposed Eunice Monument South Secondary Recovery Unit in Lea County, New Mexico, encircles the Town of Oil Center, is approximately four miles south of the Town of Monument, and is fifteen miles southwest of the City of Hobbs. The unit area covers 14,190 acres in Townships 20 and 21 South, Ranges 36 and 37 East, New Mexico Principal Meridian, and includes all or portions of 24 sections of land. At its longest and widest portions, the unit area is six miles by five and one-fourth miles.

The field was discovered March 21, 1929 with the completion of the Continental Lockhart "B-31" well in Section 31, Township 21 South, Range 36 East, N.M.P.M., Lea County, New Mexico. Following discovery, the field was designated as the Eunice (Queen-Penrose, Grayburg and San Andres geological formations) Pool. In 1953, the Eunice Pool was separated into the Eumont Gas Pool and Eunice Monument Oil Pool.

The oil field was developed on 40-acre spacing with the majority of wells being drilled and completed during the three-year period from 1934 through 1937. Peak oil production from the collective wells occurred in May of 1937 when the monthly production was 791,800 barrels of oil, or 25,542 barrels per day.

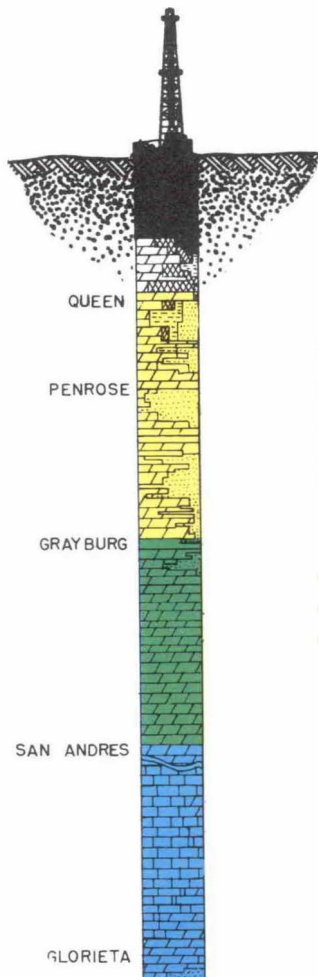
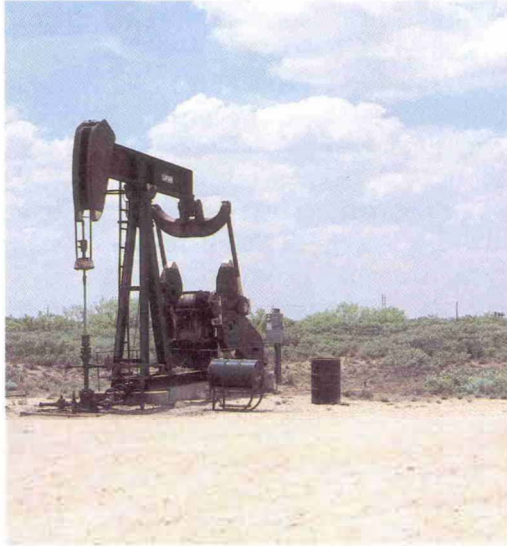
Since May of 1937, oil production within the unit has steadily declined. Twenty-three companies have drilled and completed 344 oil wells, but because of production decline, only 200 oil wells are active. The remaining wells have been temporarily abandoned, plugged, or recompleted in other zones. The oil production is now approximately 60,000 barrels of oil per month, or 7½ % of the peak (1937) monthly production.





# HOW CAN WE EXTEND THE LIFE OF THIS FIELD — 1929 TO \_\_\_\_\_

As with all oil fields, production has declined with time. In 1979, the Working Interest Owners (companies operating the wells and paying the maintenance costs) began a series of meetings and engineering studies to attempt to extend the productive life of this field by recovering oil that can never be produced with the present method of operation and existing facilities.



## WATER INJECTION

After the various company geologists and engineers completed their laboratory and reservoir studies, they concluded that a unit should be formed to inject water into the oil producing formations to force oil trapped in the rocks to the pumping units of the producing wells. This method of recovery is being successfully employed in many of the older oil fields in the area

For this proposed unit, salt water from the non-productive San Andres formation, supplemented by the reinjection of produced water, was recommended for pressurized injection into the oil producing portions of the Grayburg and Lower Penrose formations.

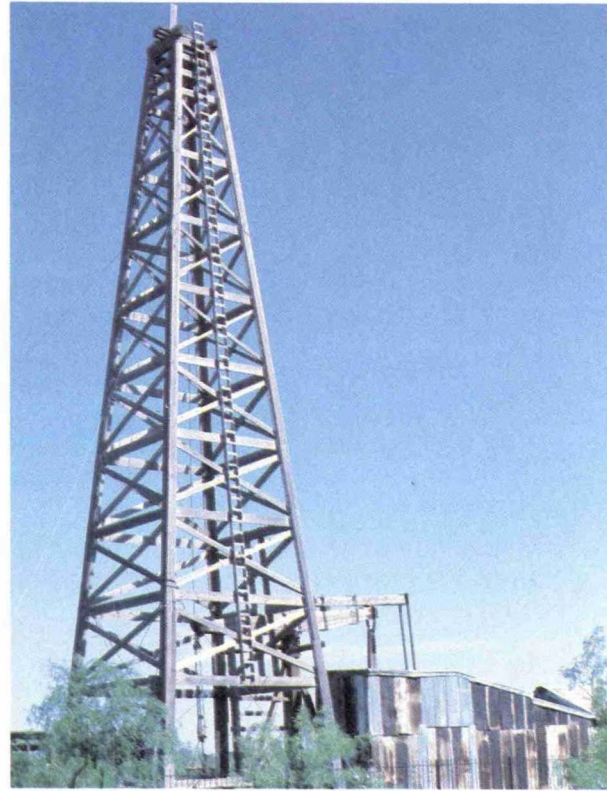
To understand the benefits of water injection, a brief discussion of primary and secondary recovery is helpful.



## PRIMARY RECOVERY

Water, oil and gas existed under high temperature and high pressure when the first well was drilled into the oil producing formations. Because of the high gas pressure, the Continental Lockhart "B-31" well was a true gusher when it was drilled in 1929. The oil, along with some water and gas, was pushed out the well bore by the pressure of the gas. As more wells were drilled, the pressure decreased and pumps had to be installed on the wells.

With the decreased reservoir pressure, a large amount of oil was trapped in the pore spaces of the reservoir rocks. The diagram shown below represents the pore spaces in the reservoir at different times during the life of the field. The original condition of the reservoir at the time of discovery is shown in Figure (a), with only oil and water filling the pore spaces. It is seen that as oil is produced, gas bubbles, water, and the small pore spaces prevent recovery of 80% of the oil in place. At this point, as shown in Figure (b), a large amount of oil remains trapped in the reservoir.

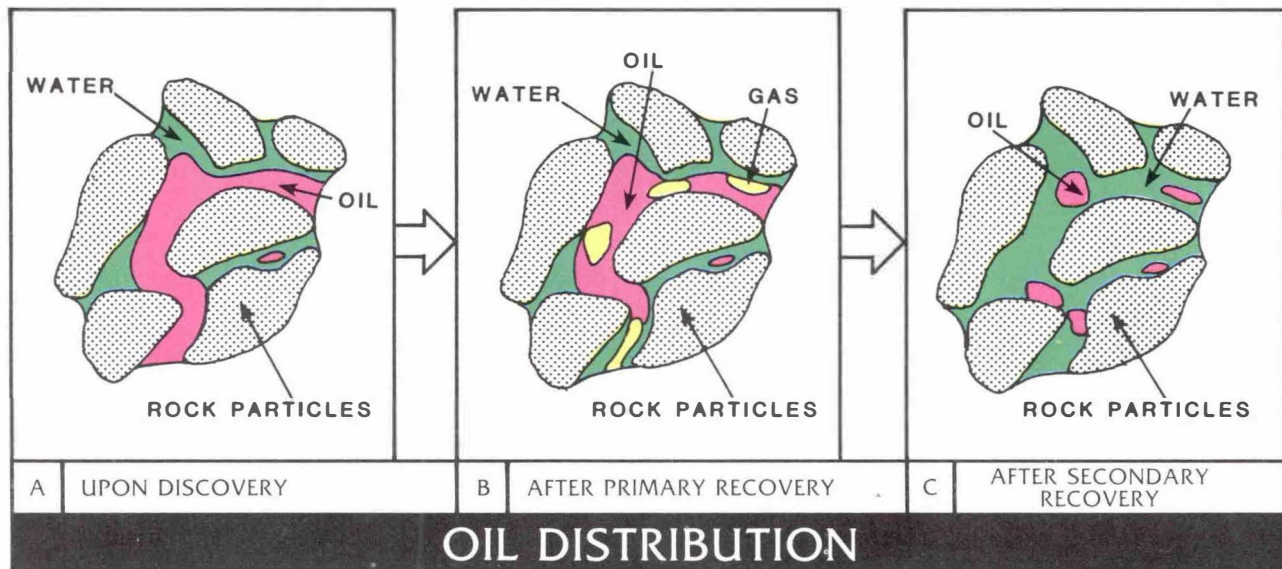


## SECONDARY RECOVERY

Two natural forces provide the energy necessary to move oil from the reservoir to a producing well. One is the expansion of the gas that is dissolved in the oil (solution gas drive) and the second is the movement of water which displaces the oil (water drive).

Generally speaking, a reservoir that has a water drive (natural or man-made) will yield significantly more oil than if subjected only to a solution gas drive. When it is determined that a reservoir is primarily producing by gas expansion, consideration is given to supplementing the solution gas drive with the injection of water to recover additional oil.

A water injection program, also referred to as secondary recovery, requires pressurized injection of water through selected wells into the oil-bearing reservoir. The injected water forces the oil to the surrounding producing wells where it is pumped to the surface. Following a water injection program, a large portion of the original oil is recovered as shown in Figure (c).





## UNITIZATION FOR WATER INJECTION

### ★ WHAT IS UNITIZATION?

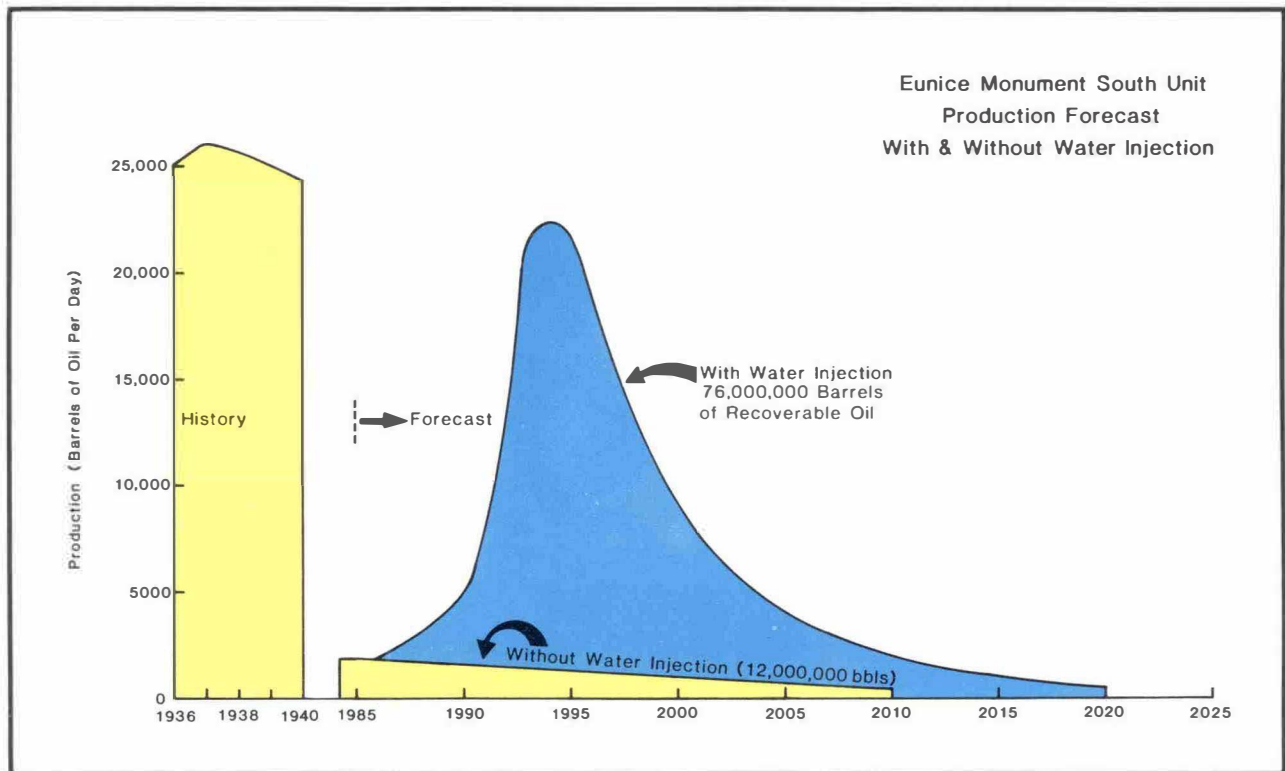
Basically, unitization is the joining of the various leases and interests within an agreed upon land area to cooperatively develop the energy resources in accordance with the best economic, geological and engineering principles applicable to the particular oil reservoir. Unitization allows for different recovery methods to be used; thereby, as a general rule, increasing production and providing more income to Royalty and Working Interest Owners.

### ★ WHY IS IT NECESSARY TO UNITIZE?

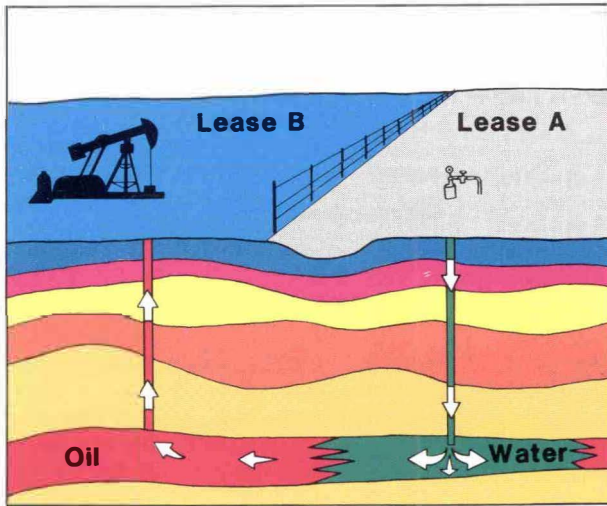
With a program of water injection, oil is displaced across property lines and some of the wells on the property may be used for the injection of water instead of the production of oil. It is therefore necessary to join all properties in a way that they can be treated and operated as a single property. This requires that Working Interest Owners and Royalty Interest Owners pool their respective interests and share in oil produced. This pooling and sharing is called "unitization" and the property formed is called a "unit."

### ★ WILL WATER INJECTION RESULT IN RECOVERING MORE OIL?

Yes, joint studies by the various companies operating wells in the area indicate that since the drilling of the first well in 1929, the area has produced 120 million barrels (yellow) of oil and, it is projected, will ultimately produce only 12 million more barrels of oil without water injection. However, with water injection, it is estimated that as much as an additional 64 million barrels (blue), may be recovered.

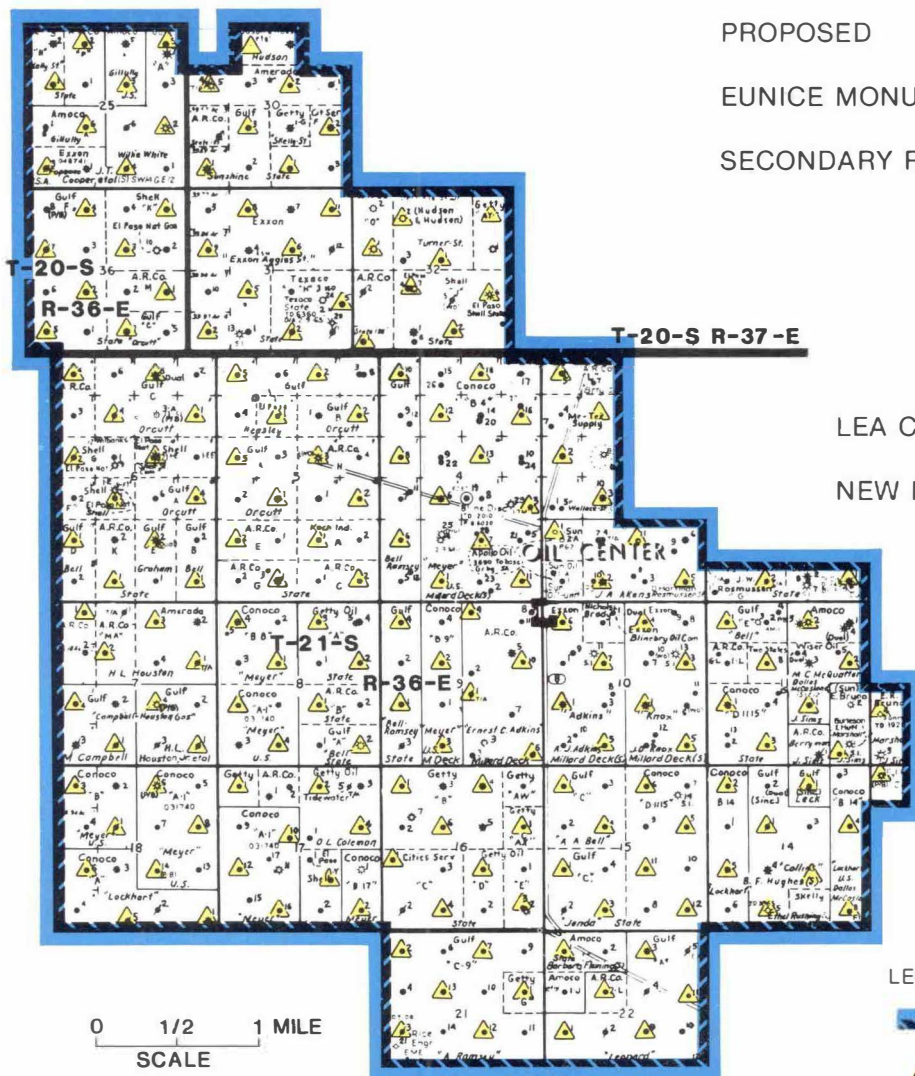








With a water injection program, oil may be moved from one property to another. As illustrated, oil may be moved from Lease A to Lease B and produced from the well located on Lease B. In view of this movement of oil, it is necessary to pool or unitize all interests in order for owners of both leases to receive their share of the income from the oil produced.

In comparison to this two-well illustration, Eunice Monument South Unit, as proposed, will extend over an area of 14,190 acres and will have approximately 170 injection wells and 190 producing wells.



PROPOSED  
EUNICE MONUMENT SOUTH  
SECONDARY RECOVERY UNIT

LEA COUNTY,  
NEW MEXICO

LEGEND:  
 — UNIT OUTLINE  
 — INJECTION WELL



# UNITIZATION'S AFFECT UPON ROYALTY OWNERS

## ★ ARE MOST OF THE WORKING INTEREST AND ROYALTY OWNERS IN FAVOR OF THE UNIT?

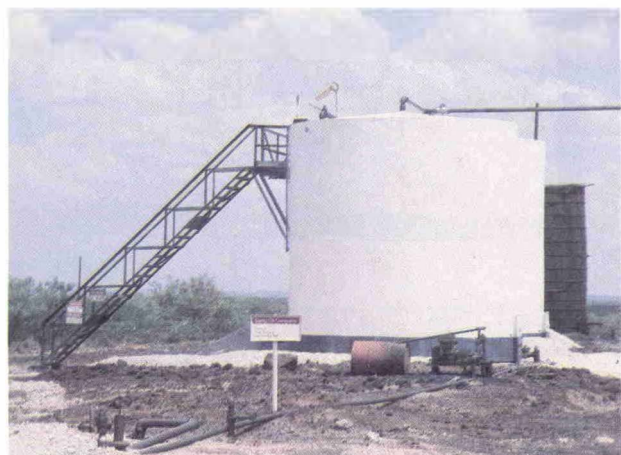
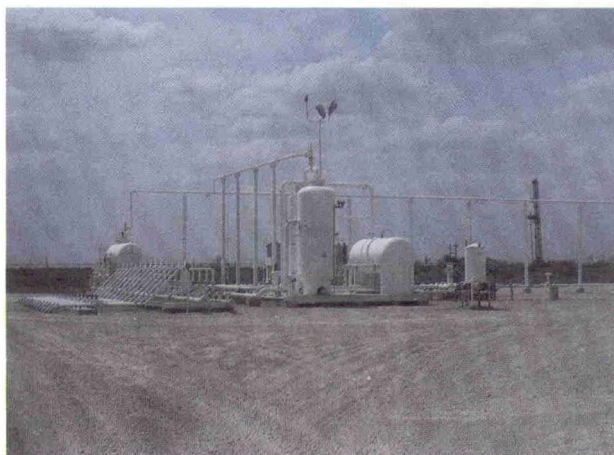
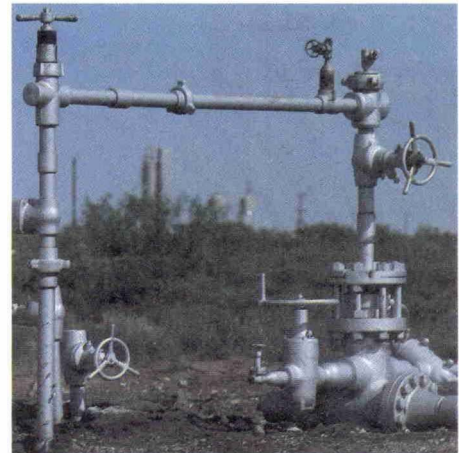
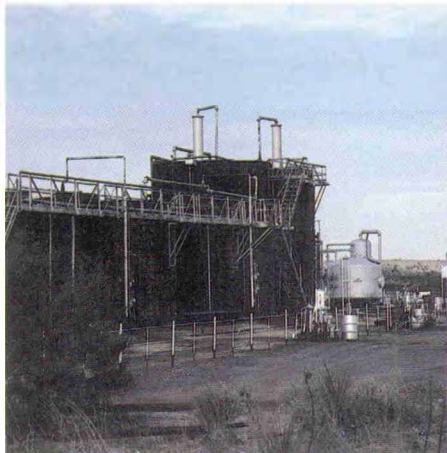
Yes, in excess of 80% of the Working Interest Owners have indicated approval of the unit and the water injection program. The State of New Mexico and the federal government own 78% of the lands within the unit, and because of the projected increase in recoverable oil and income, both have indicated preliminary approval of the unit.

## ★ HOW WILL UNIT PRODUCTION BE ALLOCATED?

Unitization allocates to each tract in the unit a percentage of the unit's overall production based upon a formula which compares overall unit production figures to cumulative oil production from the tract, the primary oil reserves of the tract, and the oil production from January 1, 1982 through September 30, 1982 for the tract. This formula allows equitable sharing in the increased unit production even if the property contains only an injection well and no producing oil well.

## ★ HOW WILL JOINING THE UNIT AFFECT MY INCOME?

As indicated in the graph on page 4, oil production (and your royalty income) has been declining annually. When unitization is completed and water injection has begun, the estimates of unit production and your income are expected to increase through 1993. After 1993 your monthly income is still projected to be greater than if no water injection were begun.





**★ WHEN WILL THE WATER INJECTION PROGRAM BEGIN? WHAT IS THE COST? WHO PAYS FOR IT?**

The construction is expected to begin in late 1984. It is estimated to cost approximately \$60 million, all of which will be paid by the Working Interest Owners (companies) and at no cost to you, the Royalty Owner.

**★ WHAT WILL HAPPEN TO INCOME I RECEIVE FROM WELLS THAT PRODUCE FROM ZONES OTHER THAN THE UNITIZED FORMATIONS?**

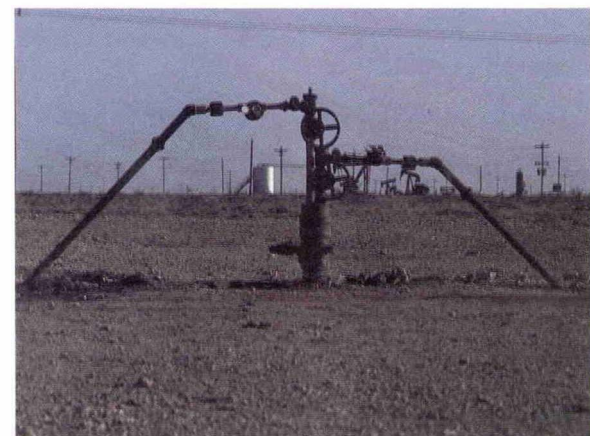
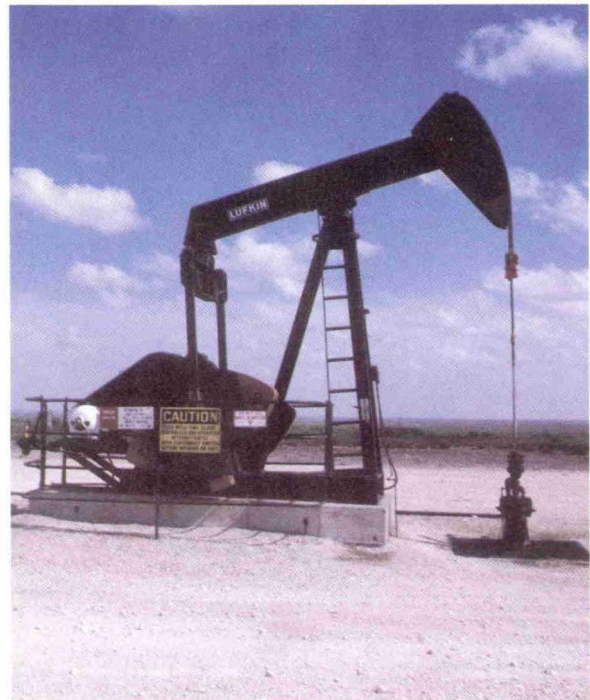
Income from gas wells or oil wells that produce from zones above or below the unitized formations will not be affected by this agreement.

**★ HOW DO I KNOW I WILL BE GETTING MY "FAIR SHARE" OF THE UNIT'S PRODUCTION?**

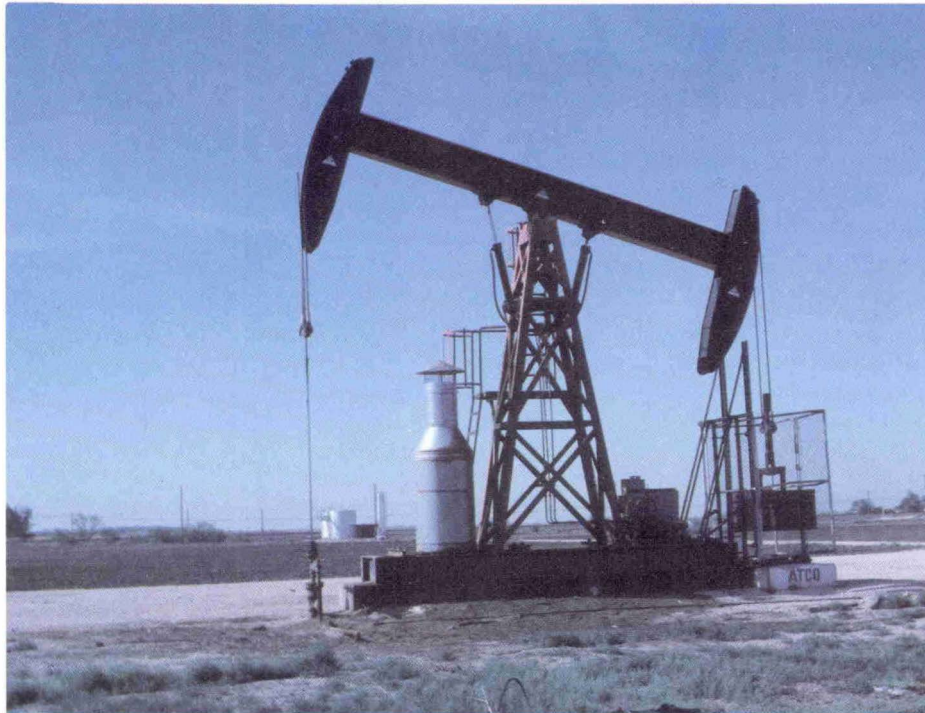
The companies owning an interest in the unit area include Gulf, Chevron, Exxon, Conoco, Cities Service, Getty, Amoco, Atlantic Richfield, Sun, Amerada Hess, Shell, Texaco, and others. Each of these companies competes with the others, each has a competent staff of geologists, engineers, accountants and attorneys, and each answers to a board of directors. Because of the competitive nature of the business, each of these companies must be assured that it is getting a fair and equitable deal or it will not join the unit. As a result of the numerous meetings and studies conducted since 1979, the majority of these Working Interest Owners have agreed that the formula, as set out in Section 13 of the attached Unit Agreement, fairly represents their interest in the tract and the unit. They are also convinced that their share of the production and revenues will increase by joining the unit.

The New Mexico Oil Conservation Division is required by law to assure that the royalty owners will be benefited and that the participation formula is fair, reasonable and equitable, and protects the rights of all owners of interest within the unit area before it may approve the establishment of this unit.

Since a Royalty Owner's interest in a tract is a set percentage, it will not change. The revenue received by the Royalty Owner will be based upon his percentage of ownership in that tract multiplied by the overall unit production allocated to that tract. For example, if the Royalty Owner's interest in a tract is 5% of that tract's production before unitization, this ownership will become 5% of the tract's interest in the overall unit's production after unitization.







## **A SUCCESSFUL WATER INJECTION PROGRAM REQUIRES COOPERATION**

Unitization of the Eunice Monument South field requires the cooperation of the various oil companies and Royalty Owners. In forming a unit, it is necessary for Royalty and Working Interest Owners to join in a written agreement which states, among other things, the method of arriving at each tract's participation. By signing the Ratification to the agreement, the Royalty Owner is agreeing to the unitization and water injection concept, the tract participation formula, and his interest in the tract.

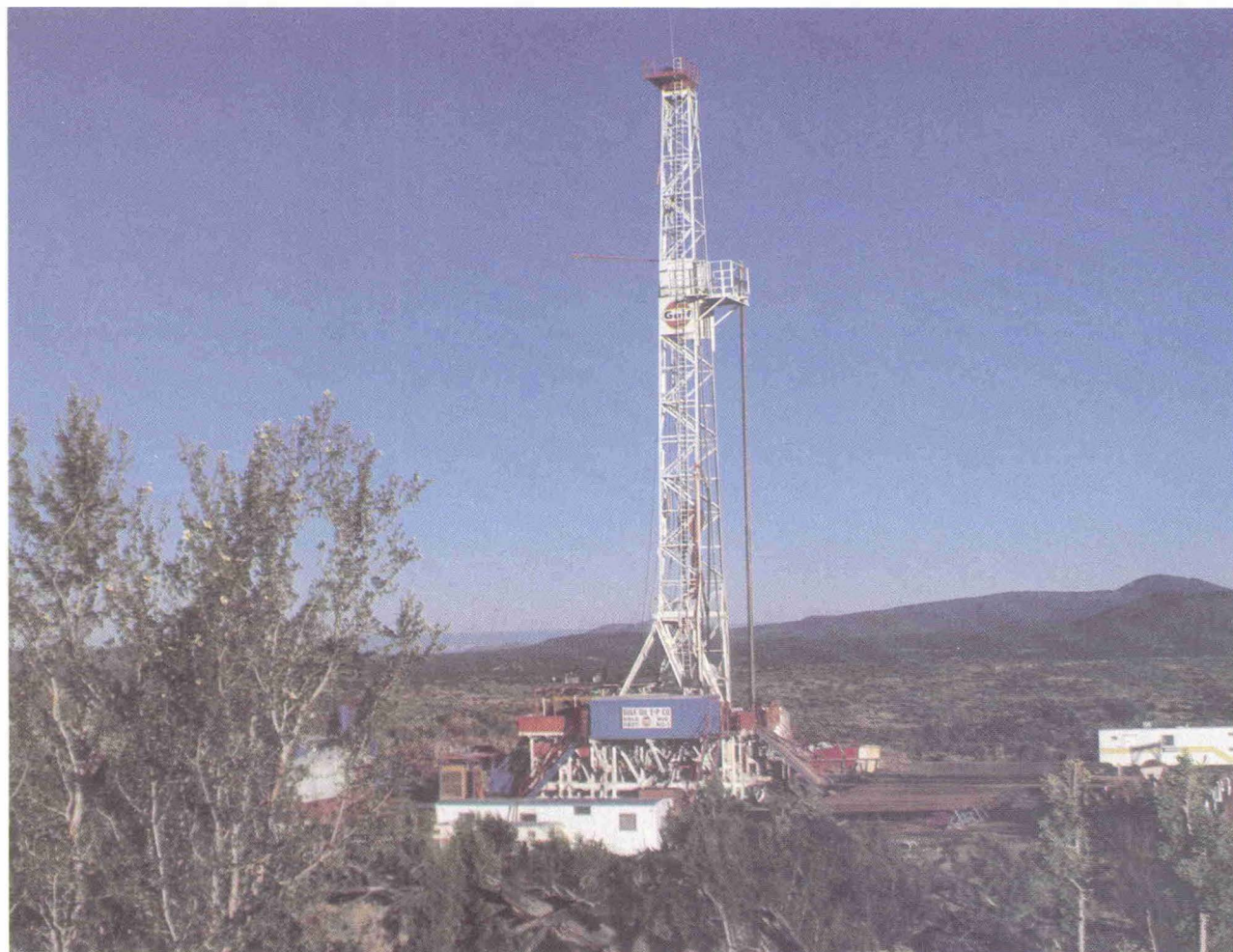
Since the purpose of the unitization and water injection is to increase both the amount of oil recovered and the rate of recovery, the Royalty Owner should receive more money, but does not pay any of the costs associated with increasing the production.

We urge you, therefore, to PLEASE COMMIT YOUR INTEREST to the unit BY SIGNING, BEFORE A NOTARY PUBLIC, SIX (6) COPIES of the attached "Ratification and Joinder" to the Unit Agreement and return them in the enclosed, self-addressed, postage paid envelope as soon as possible.

If you have any additional questions, please call Mr. Ray M. Vaden at (915) 687-7202, or address your correspondence to:

Land Department Manager  
Gulf Oil Corporation  
P. O. Box 1150  
Midland, Texas 79702





Minutes of Technical Committee Meeting

Proposed Eunice Monument South Unit

May 4, 1982

The Technical Committee meeting began at 9:00 a.m., May 4, 1982, at the Midland Center, Midland, Texas. Representatives of 15 operators having working interests within the proposed Unit were present. The attendees represented 93% of the Unit acreage.

Mr. D. T. Berlin, chairman of the Technical Committee, opened the meeting by introducing Gulf personnel. Mr. Berlin announced the agenda items and briefly reviewed the Technical Committee voting procedure. He then turned the meeting over to Mr. Tom Wheeler to proceed with the Committee discussion.

Mr. Wheeler began by reviewing the status of the data which has been requested from Unit Operators. Approximately two thirds of the Unit Operators have not complied with all data requests, and some have not answered any Unit correspondence. Mr. Wheeler asked that the Information Request summary, Attachment 1, be reviewed by all Operators. A complete parameter table cannot be constructed until all Operators have provided correct information regarding the tract legal descriptions and Working Interest divisions.

Mr. Wheeler introduced the three agenda items for the day as follows:

1. Definition of the vertical limits of the unitized interval
2. Finalization of the Unit boundary
3. Committee consensus of the Tract production decline curves

He reminded the participants that the goal of the Committee was to provide recommendations to the Working Interest Owners on these three topics.



During the discussion of the vertical interval to be unitized, Mr. Wheeler described the five alternatives which have been investigated by Gulf. The bottom of the interval must be the base of the San Andres formations to include the area's most prolific water production zone, however, the five alternatives for the top of the interval are as follows:

1. Top of the Grayburg Formation
2. Top of the Penrose Formation
3. An intermediate marker between the upper Penrose sand and lower Penrose carbonate section
4. A subsea datum
5. A combination of 1 and 4 (above)

Each alternative has advantages and disadvantages, however, after an extensive analysis of the cross sections from the Unit, Gulf engineers and geologists had concluded that the following vertical limit definition should be proposed to the Working Interest Owners: "The Unitized Interval shall include the formations from a lower limit defined by the base of the San Andres formation, to an upper limit defined by the top of the Grayburg formation or a -100 foot subsea datum, whichever is higher."

The significant advantages of this definition include the following:

1. Includes all known Eumont Oil and Eunice Monument Oil production in the Unit area
2. Excludes most gas well completions in the area
3. Minimizes the number of workovers required to prevent waterflooding non-unitized formations
4. Exposes the total oil productive interval in the Unit area to Water-flood operations

When no other alternatives were presented by Committee members for consideration, the Committee unanimously accepted the above definition of the Unit vertical limits.

The second discussion topic, final boundary selection, involved review of all properties adjacent to the current boundary to determine whether additional acreage should be included in the Unit. After discussion the Committee voted to include three tracts which have current or past Eunice Monument oil production. The three tracts are outlined on Attachment 2, and are identified below.

1. Tract 114 - 80 acres of Amoco "State 'C' Tract 11" Lease located in S/2 SE/4 Section 2, Township 21 South, Range 36 East, Lea County, New Mexico.
2. Tract 115 - Amoco "McQuatters" lease covering N/2 NE/4 Section 11, Township 21 South, Range 36 East, Lea County, New Mexico.
3. Tract 116 - 40 acres of Conoco "Lockhart B" Lease located in NW/4 NW/4 Section 13, Township 21 South, Range 36 East, Lea County, New Mexico.

Mr. Huan Pham presented ARCO's recommendation that the Committee consider adding three tracts as listed below:

1. Arco "Ida White" Lease - 80 acres in N/2 SE/4 Section 35, Township 20 South, Range 36 East.
2. Arco "Endure State" Lease - 160 acres in SE/4 Section 12 Township 21 South, Range 35 East.
3. Arco "State 176" Lease - 280 acres composed of N/2 NW/4, SE/4 NW/4 and W/2 E/2 Section 19, Township 21 South, Range 36 East.

The Technical Committee voted against the addition of the Arco tracts.



The Committee heard a request from Ms. Pam Morpew, representing the interests of Doyle Hartman and James Rasmussen, to delete tracts 70 and 113 from the Unit. These adjacent 40 acre tracts are located in the eastern portion of the Unit. Tract 70 is the Hartman operated Rasmussen State lease which has a high GOR Eunice Monument oil well, the #1 Rasmussen State, and an abandoned Eunice Monument well, the #1 Rasmussen State 'G'. Tract 113 has the abandoned #2 Rasmussen State 'G' Eunice Monument oil well. After discussion the Committee voted to recommend to the Working Interest Owners that the tracts not be excluded from the Unit at this time.

The last agenda item was the finalization of production decline curves. All curves were individually reviewed, declined and approved by group consensus. Reserve calculations will be based on these decline curves.

The meeting was adjourned following completion of the decline curve review.

The water injection plant and treating facilities will be located at the central battery site. Water will be transferred under pressure to the primary distribution headers located at each satellite battery site, then to secondary headers located in the field, each serving from three to five injection wells.

The total water requirement will be provided by reinjection of produced water, and from make-up water provided by nine San Andres supply wells. For this cost estimate, the assumption was made that new water supply wells would be drilled; however, there is a possibility that existing wellbores may be available which could be purchased and completed in the San Andres.



COST ESTIMATE

The cost estimate for the above preliminary design can be summarized into seven major categories as listed below:

<u>Item</u>	<u>Tangibles</u>	<u>Intangibles</u>
1. Production and Injection Facilities	\$ 12,548,200	\$ 6,681,450
2. Drill & Equip 9 Water Supply Wells	3,051,000	1,989,000
3. Drill & Equip 19 Producers	2,726,500	3,543,500
4. Drill & Equip 16 Injectors	1,336,000	2,984,000
5. Remedial Work - 208 Wells	10,060,000	9,295,000
6. Coring Cost - 20 Wells		1,000,000
7. Pumping Unit Replacements	<u>6,726,000</u>	<u>570,000</u>
Subtotal	\$ 36,447,700	\$ 26,062,950
Grand Total	\$ 62,510,650	

1. Production and Injection Facilities

This item includes all storage, transfer, treatment, metering and sales equipment. This item also includes costs for electrifying the unit, retiring existing facilities as they are replaced, and settling right-of-way and damage claims due to construction.

2. Drill and Equip 9 Water Supply Wells

This item provides for drilling, completing, and equipping nine wells to provide water from the lower San Andres formation. The wells will be required to provide the water injection requirement which is expected to peak at 2.7 MM barrels per month during fill-up.

1  
2  
3  
4  
5  
6  
7  
8  
9  
10  
11  
12  
13  
14  
15  
16  
17  
18  
19  
20  
21  
22  
23  
24  
25

STATE OF NEW MEXICO  
ENERGY AND MINERALS DEPARTMENT  
OIL CONSERVATION DIVISION  
STATE LAND OFFICE BLDG.  
SANTA FE, NEW MEXICO

7 November 1984

COMMISSION HEARING

\*VOLUME I OF II VOLUMES\*

IN THE MATTER OF:

Application of Gulf Oil Corporation  
for statutory unitization, Lea  
County, New Mexico.

CASE  
8397

Application of Gulf Oil Corporation  
for a waterflood project, Lea  
County, New Mexico.

CASE  
8398

Application of Gulf Oil Corporation  
for pool extension and contraction,  
Lea County, New Mexico.

CASE  
8399

BEFORE: Richard L. Stamets, Chairman  
Commissioner Ed Kelley

TRANSCRIPT OF HEARING

A P P E A R A N C E S

For the Oil Conservation  
Commission:

Jeff Taylor  
Attorney at Law  
Legal Counsel to the Division  
State Land Office Bldg.  
Santa Fe, New Mexico 87501



1  
2  
3  
4  
5  
6  
7  
8  
9  
10  
11  
12  
13  
14  
15  
16  
17  
18  
19  
20  
21  
22  
23  
24  
25

A P P E A R A N C E S

For Gulf Oil Corp.: W. Thomas Kellahin  
Attorney at Law  
KELLAHIN & KELLAHIN  
P. O. Box 2265  
Santa Fe, New Mexico 87501

Ken M. Brown  
Attorney at Law  
Gulf Oil Corporation

For Exxon: James M. Sperling  
Attorney at Law  
MODRALL, SPERLING, ROEHL,  
HARRIS & SISK  
Post Office Box 2168  
Albuquerque, New Mexico 87103

For Tract 55 Owners: Ernest L. Padilla  
Attorney at Law  
P. O. Box 2523  
Santa Fe, New Mexico 87501

I N D E X

STATEMENT BY MR. KELLAHIN	5
RAY M. VADEN	
Direct Examination by Mr. Kellahin	9
Cross Examination by Mr. Padilla	33
Cross Examination by Mr. Sperling	39
RAY HOFFMAN	
Direct Examination by Mr. Kellahin	43
Cross Examination by Mr. Padilla	55
Cross Examination by Mr. Sperling	59
Cross Examination by Mr. Stamets	60
Redirect Examination by Mr. Kellahin	61
Recross Examination by Mr. Padilla	63

1  
2  
3  
4  
5  
6  
7  
8  
9  
10  
11  
12  
13  
14  
15  
16  
17  
18  
19  
20  
21  
22  
23  
24  
25

52

At the top of this summary is another number. It says "well" and as an example "14-4". That would indicate that it's cross section 14 and the well is at location number 4, and that is from the west.

The Penrose in this area, the lower part of the Penrose, the oil column in this area thins from the Grayburg up into the lower part of the Penrose. The middle Penrose is usually tight across the whole area except for the southern western edge of the field and this provides a pretty effective barrier between the oil column and the Penrose sand.

The Penrose sand is -- is that sand in the very top of the Penrose and generally found over the whole field.

On the western and southern edges of the field the sand, which is a dolomitic sand, changes into dolomite by a facies change or is cemented tight with dolomitic cement, with a corresponding loss of porosity and permeability along the edge of the unit.

Q All right, sir, when you look at Exhibit Number Eighteen, which is the line of cross section east to west on the southern portion of the unit, would you describe what you see in that cross section?

A Basically it's the same as you see -- basically it's the same as our cross section 14 as to tops and datums and it shows the same as cross section 14 (not clearly audible).



53

1  
2  
3  
4  
5  
6  
7  
8  
9  
10  
11  
12  
13  
14  
15  
16  
17  
18  
19  
20  
21  
22  
23  
24  
25

Q When you look at the oil column in the unit area, that is included generally in the Grayburg and the lower portion of the Penrose, is that correct?

A That's correct.

Q The upper portion of the Penrose is that sand that is gas productive.

A Yes, it is.

Q When you talked about the dense dolomites, are the dense dolomites between the oil column and the gas column?

A Yes, they are. The base of the sand is the top of the Penrose.

Q Within the Penrose section, then, there's a dolomite interval that separates the oil and the gas?

A Yes, sir, dolomite stringers, long sand stringers. The dolomite in the area is tight.

Q In your opinion is that an effective barrier between the oil and the gas in the area?

A Yes, it is, over most of the field.

Q All right, when we look at the top of the Grayburg and the base of the Penrose do we see any formational barrier between the top of the Grayburg and the base of the Penrose in the oil column?

A No, we don't.

Q Are you familiar with what Gulf proposes to use as the definition for the formation or the unit interval?

1  
2  
3  
4  
5  
6  
7  
8  
9  
10  
11  
12  
13  
14  
15  
16  
17  
18  
19  
20  
21  
22  
23  
24  
25

STATE OF NEW MEXICO  
ENERGY AND MINERALS DEPARTMENT  
OIL CONSERVATION DIVISION  
STATE LAND OFFICE BLDG.  
SANTA FE, NEW MEXICO

8 November 1984

COMMISSION HEARING

\*VOLUME II OF II VOLUMES\*

IN THE MATTER OF:

Application of Gulf Oil Corporation      CASE  
for statutory unitization, Lea      8397  
County, New Mexico.

Application of Gulf Oil Corporation      CASE  
for a waterflood project, Lea      8398  
County, New Mexico.

Application of Gulf Oil Corporation      CASE  
for pool extension and contraction,      8399  
Lea County, New Mexico.

BEFORE: Richard L. Stamets, Chairman  
Commissioner Ed Kelley

TRANSCRIPT OF HEARING

A P P E A R A N C E S

For the Oil Conservation      Jeff Taylor  
Commission:      Attorney at Law  
   Legal Counsel to the Division  
   State Land Office Bldg.  
   Santa Fe, New Mexico 87501



214

1  
2 Q In addition to distributing in this pack-  
3 age of exhibits Exhibit Thirty-two, I've also distributed  
4 the next exhibit, which is 33-A.

5 A Yes, sir.

6 Q All right, would you identify that for  
7 us?

8 A It lists data on the proposed operation  
9 of the injection system for the waterflood project in the  
10 Eunice Monument South Unit.

11 Q All right, sir, would you describe for us  
12 what the proposed method of operation is for the unit?

13 A Okay. As shown on Exhibit Number Thirty-  
14 three-A, our average daily rates and maximum daily rates are  
15 400 and 500 barrels of water per day, respectively. The  
16 system is going to be a closed system. The proposed average  
17 and maximum injection pressures will be 350 psi and 740 psi,  
18 respectively.

19 This will be until we can determine a  
20 fracture gradient and obtain proper approval from the OCD  
21 Director for possibly injecting at higher injection pres-  
22 sures.

23 To monitor and control the rates and  
24 pressures at the wellhead, our plans are to install pressure  
25 rate controllers on each injection well.

26 There are currently plans to drill approx-  
27 imately nine water supply wells to provide make-up water  
28 from the San Andres formation. This make-up water will be

215

1  
2 used initially as the primary source of injection water and  
3 once we have the unit fully developed, we will be switching  
4 over to using produced water as our primary source of injection  
5 water.

6 Q Do you have any estimates now of the per-  
7 centages between make-up water and produced water that will  
8 be used by the project?

9 A Not at this time. Our present plans are  
10 that initially we'll be using approximately 60,000 barrels  
11 of water per day for 133 injection wells.

12 Q And what is the source of produced water  
13 in the unit?

14 A It will be from the unitized intervals,  
15 the Grayburg formation, principally.

16 Q Do you anticipate that the maximum injection  
17 pressure at any individual injection well will be based  
18 upon the .2 psi per foot of depth gradient established as  
19 matter of practice by the Commission until you have other  
20 data available to justify a higher rate?

21 A Yes, sir, that's our plan.

22 Q All right, sir, it you'll turn to Exhibit  
23 Number Thirty-three-B, I believe, is the next one, and de-  
24 scribe that one for us.

25 A Thirty-three-B is a water compatibility  
analysis performed on the make-up water and the produced  
water and it illustrates that there is no incompatibility  
evident by the mixing of these two waters.



224

1  
2 ation. We can plug a lot of that into the computer to check  
3 you to see that -- on your reports -- to see that you're  
4 really following that. That's a lot of calculations for all  
5 of us to try and figure out what individual pressure limits  
6 are.

7 I'm wondering if it would be possible to  
8 establish groupings of pressures in this reservoir, say per-  
9 haps all the wells on the two sections on the west side  
10 would have the same pressure limit, and the three down in  
11 the middle, the same pressure limit, and so on, let's say,  
12 for the east side, so that we wouldn't have, what, 149 dif-  
13 ferent pressures; we might have, say, five or six different  
14 pressure limits within the limits of the pool we would have  
15 to process.

16 A With the installation of those pressure  
17 rate controllers we'd be able to control pressures and rates  
18 on an individual injection well basis.

19 Where we may want a well to take -- take  
20 more water, inject more water into a well, it might require  
21 different pressures, other situations.

22 Q It's just a suggestion. We can look into  
23 it and if it works out, we'll try and do it.

24 A Okay, sir.

25 Q Now I understand that you will be in-  
jecting only into the Grayburg and the Penrose and not the  
San Andres, is that correct?

A That is correct.

## San Andres SWD Injection

## Goodnight Midstream

API	Well / Formation	PLLS Location	Date Of First Injection	Volume of Water Injected	Days in Operation	Average BWPD	Inside EMSU Boundary	
30-025-43901	Ryno San Andres	H-17-21S-36E	3/14/2019	13,915,844	1,665	8,358	Yes	Re-completed: San Andres 6/2020
30-025-47947	Sosa San Andres	N-17-21S-36E	4/18/2021	15,691,240	899	17,454	Yes	
30-025-44386	Ted San Andres/Glorieta	F-28-21S-36E	3/31/2019	12,811,643	1,648	7,774	No	
30-025-46382	Yaz San Andres	A-28-21S-36E	10/8/2019	14,768,685	1,457	10,136	No	
30-025-26491	Piper* San Andres	M-18-21S-37E	1/1/2012	26,713,658	4,294	6,221	No	
30-025-45349	Nolan Ryan San Andres	O-13-21S-36E	10/31/2019	13,091,799	1,434	9,130	No	
30-025-46398	Scully San Andres	F-4-22S-36E	3/12/2020	8,616,661	1,301	6,623	No	
30-025-50079	Pedro San Andres/Glorieta	M-28-21S-36E	7/21/2022	10,749,619	440	24,431	No	
30-025-50634	Dawson San Andres	P-17-21S-36E	1/17/2023	3,650,077	260	14,039	Yes	
30-025-50633	Banks San Andres	D-17-21S-36E	5/5/2023	1,823,291	152	11,995	Yes	

Piper AKA Penroc State E 27 #2

## San Andres Operated by Others

30-025-21852	Rice EME SWD #021	L-21-21S-36E	9/22/1966	39,255,813	20,831	1,884	Yes	w/ volume before records
30-025-04484	Empire E M S U #001	W-4-21S-36E	3/2/1987	4,229,556	13,365	316	Yes	w/ volume before records
30-025-12786	Rice EME SWD #033M	M-33-20S-36E	4/14/1960	59,370,620	23,183	2,561	No	w/ volume before records
30-025-46579	Owl P15 #001	P-15-21S-36E	11/1/2020	2,040	1,067	2	Yes	
30-025-46577	Rice N11 #001	N-11-21s-36E	11/1/2020	1,854,544	1,067	1,738	Yes	
30-025-38789	Parker Parker SWD #005	A-24-21S-36E	3/15/2015	7,773,660	3,125	2,488	No	
30-025-26317	Rice State E 27 #1	N-18-21S-37E	10/15/2008	35,660,864	5,467	6,523	No	

**269,979,614**

BEFORE THE OIL CONSERVATION DIVISION  
Santa Fe, New Mexico  
Exhibit No. B-18

Submitted by: Goodnight Midstream Permian, LLC  
Hearing Date: November 2, 2023  
Case Nos. 23614-23617



Form 3160-5 (August-2007)

UNITED STATES DEPARTMENT OF THE INTERIOR BUREAU OF LAND MANAGEMENT

HOBBS OCD

FORM APPROVED OMB NO. 1004-0135 Expires: July 31, 2010

SUNDRY NOTICES AND REPORTS ON WELLS Do not use this form for proposals to drill or to re-enter an abandoned well. Use form 3160-3 (APD) for such proposals.

JUL 01 2013

SUBMIT IN TRIPLICATE - Other instructions on reverse side.

RECEIVED

1. Type of Well [X] Oil Well [ ] Gas Well [ ] Other
2. Name of Operator XTO ENERGY INC. Contact: SHERRY P PACK E-Mail: sherry\_pack@xtoenergy.com
3a. Address 200 N. LORAIN, SUITE 800 MIDLAND, TX 79701
3b. Phone No. (include area code) Ph: 432-620-6709 Fx: 432-224-1126
4. Location of Well (Footage, Sec., T., R., M., or Survey Description) Sec 4 T21S R36E Mer NMP 1980FNL 660FWL
8. Well Name and No. EMSU CTB 200
9. API Well No. 30-025-04492
10. Field and Pool, or Exploratory 23000
11. County or Parish, and State LEA COUNTY, NM

12. CHECK APPROPRIATE BOX(ES) TO INDICATE NATURE OF NOTICE, REPORT, OR OTHER DATA

Table with 2 main columns: TYPE OF SUBMISSION and TYPE OF ACTION. Includes checkboxes for Notice of Intent, Subsequent Report, Final Abandonment Notice, Acidize, Deepen, Production (Start/Resume), Water Shut-Off, etc.

13. Describe Proposed or Completed Operation (clearly state all pertinent details, including estimated starting date of any proposed work and approximate duration thereof. If the proposal is to deepen directionally or recomplate horizontally, give subsurface locations and measured and true vertical depths of all pertinent markers and zones. Attach the Bond under which the work will be performed or provide the Bond No. on file with BLM/BIA. Required subsequent reports shall be filed within 30 days following completion of the involved operations. If the operation results in a multiple completion or recomplate in a new interval, a Form 3160-4 shall be filed once testing has been completed. Final Abandonment Notices shall be filed only after all requirements, including reclamation, have been completed, and the operator has determined that the site is ready for final inspection.)

EMSU CTB SEE ATTACHED SPREADSHEET

DCP LINE REPAIR AND DCP IS NOT ABLE TO HANDLE ALL OUR PRODUCED GAS. ESTIMATE FLARE TO BE 30 MCF/D

Please include requested flaring Dates on next request.

Valid 5/20/2013 to 8/18/2013

SEE ATTACHED FOR CONDITIONS OF APPROVAL

SUBJECT TO LIKE APPROVAL BY STATE

14. I hereby certify that the foregoing is true and correct. Electronic Submission #207976 verified by the BLM Well Information System for XTO ENERGY INC., sent to the Hobbs Committed to AFMSS for processing by KURT SIMMONS on 05/22/2013 ( ) Name (Printed/Typed) SHERRY P PACK Title REGULATORY ANALYST Signature (Electronic Submission) Date 05/20/2013

BEFORE THE OIL CONSERVATION DIVISION

Santa Fe, New Mexico

Exhibit No. C-10

Submitted by: Goodnight Midstream, LLC

Hearing Date: September 15, 2022

Case No. 22626

THIS SPACE FOR FEDERAL OR STATE OFFICE USE

Approved By [Signature] Title [ ] Date [ ] Office [ ]

APPROVED

JUN 27 2013

Title 18 U.S.C. Section 1001 and Title 43 U.S.C. Section 1212 make it a crime for any person knowingly and willfully to make to any department or agency of the United States any false, fictitious or fraudulent statements of representations as to any matter within its jurisdiction.

BUREAU OF LAND MANAGEMENT CARLSBAD FIELD OFFICE

\*\* OPERATOR-SUBMITTED \*\* OPERATOR-SUBMITTED \*\* OPERATOR-SUBMITTED \*\*

BEFORE THE OIL CONSERVATION DIVISION

Santa Fe, New Mexico

Exhibit No. B-19

Submitted by: Goodnight Midstream Permian, LLC

Hearing Date: November 2, 2023

Case Nos. 23614-23617

JUL 08 2013

## EMSU CTB

Completion name

EUNICE MONUMENT SO. UNIT 101 GRBG/SA ✓		30-025-30220
EUNICE MONUMENT SO. UNIT 103 GRBG/SA ✓	FEDERAL	30-025-04331
EUNICE MONUMENT SO. UNIT 105 GRBG/SA ✓		30-025-04335
EUNICE MONUMENT SO. UNIT 109 GRBG/SA ✓	P	30-025-04324
EUNICE MONUMENT SO. UNIT 110 GRBG/SA ✓		30-025-06284
EUNICE MONUMENT SO. UNIT 112 GRBG/SA ✓		30-025-06282
EUNICE MONUMENT SO. UNIT 115 GRBG/SA ✓		30-025-06295
EUNICE MONUMENT SO. UNIT 117 GRBG/SA ✓		30-025-29396
EUNICE MONUMENT SO. UNIT 122 GRBG/SA ✓	FEDERAL	30-025-30277
EUNICE MONUMENT SO. UNIT 123 GRBG/SA ✓	FEDERAL	30-025-29957
EUNICE MONUMENT SO. UNIT 125 GRBG/SA ✓	P	30-025-04322
EUNICE MONUMENT SO. UNIT 139 GRBG/SA ✓		30-025-12544
EUNICE MONUMENT SO. UNIT 141 GRBG/SA ✓		30-025-04429
EUNICE MONUMENT SO. UNIT 142 GRBG/SA ✓		30-025-04428
EUNICE MONUMENT SO. UNIT 143 GRBG/SA ✓		30-025-04424
EUNICE MONUMENT SO. UNIT 145 GRBG/SA ✓		30-025-12545
EUNICE MONUMENT SO. UNIT 161 GRBG/SA ✓		30-025-06305
EUNICE MONUMENT SO. UNIT 165 GRBG/SA ✓		30-025-04427
EUNICE MONUMENT SO. UNIT 169 GRBG/SA ✓		30-025-29583
EUNICE MONUMENT SO. UNIT 171 GRBG/SA ✓		30-025-06296
EUNICE MONUMENT SO. UNIT 182 GRBG/SA ✓	FEDERAL	30-025-29868
EUNICE MONUMENT SO. UNIT 184 GRBG/SA ✓		30-025-04513
EUNICE MONUMENT SO. UNIT 186 GRBG/SA ✓	FEDERAL	30-025-04516
EUNICE MONUMENT SO. UNIT 188 GRBG/SA ✓		30-025-04533
EUNICE MONUMENT SO. UNIT 190 GRBG/SA ✓	P	30-025-04536
EUNICE MONUMENT SO. UNIT 194 GRBG/SA ✓		30-025-29599
EUNICE MONUMENT SO. UNIT 196 GRBG/SA ✓		30-025-04514
EUNICE MONUMENT SO. UNIT 198 GRBG/SA ✓		30-025-29682
EUNICE MONUMENT SO. UNIT 200H GRBG/SA ✓	FEDERAL	30-025-04492
EUNICE MONUMENT SO. UNIT 202 GRBG/SA ✓	FEDERAL	30-025-29866
EUNICE MONUMENT SO. UNIT 208 GRBG/SA ✓	P	30-025-04470
EUNICE MONUMENT SO. UNIT 209 GRBG/SA ✓		30-025-04473
EUNICE MONUMENT SO. UNIT 212 GRBG/SA ✓		30-025-04504
EUNICE MONUMENT SO. UNIT 214 GRBG/SA ✓		30-025-04507
EUNICE MONUMENT SO. UNIT 216 GRBG/SA ✓		30-025-08704
EUNICE MONUMENT SO. UNIT 224 GRBG/SA ✓		30-025-04506
EUNICE MONUMENT SO. UNIT 232 GRBG/SA ✓		30-025-04452
EUNICE MONUMENT SO. UNIT 238 GRBG/SA ✓		30-025-04466
EUNICE MONUMENT SO. UNIT 244 GRBG/SA ✓	FEDERAL	30-025-04497
EUNICE MONUMENT SO. UNIT 246 GRBG/SA ✓		30-025-04527
EUNICE MONUMENT SO. UNIT 249 GRBG/SA ✓	P	30-025-04525
EUNICE MONUMENT SO. UNIT 250 GRBG/SA ✓		30-025-04526
EUNICE MONUMENT SO. UNIT 254 GRBG/SA ✓		30-025-04500
EUNICE MONUMENT SO. UNIT 256 GRBG/SA ✓		30-025-04495
EUNICE MONUMENT SO. UNIT 260 GRBG/SA ✓	FEDERAL	30-025-04463



EUNICE MONUMENT SO. UNIT 262 GRBG/SA ✓	P	30-025-04454
EUNICE MONUMENT SO. UNIT 264 GRBG/SA ✓		30-025-04457
EUNICE MONUMENT SO. UNIT 266 GRBG/SA ✓		30-025-26101
EUNICE MONUMENT SO. UNIT 267 GRBG/SA ✓		30-025-04440
EUNICE MONUMENT SO. UNIT 274 GRBG/SA ✓		30-025-04602
EUNICE MONUMENT SO. UNIT 276 GRBG/SA ✓		30-025-04603
EUNICE MONUMENT SO. UNIT 278 GRBG/SA ✓		30-025-20133
EUNICE MONUMENT SO. UNIT 280 GRBG/SA ✓		30-025-04573
EUNICE MONUMENT SO. UNIT 282 GRBG/SA ✓		30-025-21902
EUNICE MONUMENT SO. UNIT 284 GRBG/SA ✓		30-025-04561
EUNICE MONUMENT SO. UNIT 286 GRBG/SA ✓		30-025-04540
EUNICE MONUMENT SO. UNIT 290 GRBG/SA ✓		30-025-04543
EUNICE MONUMENT SO. UNIT 294 GRBG/SA ✓	FEDERAL	30-025-04562
EUNICE MONUMENT SO. UNIT 296 GRBG/SA ✓		30-025-04566
EUNICE MONUMENT SO. UNIT 298 GRBG/SA ✓	FEDERAL	30-025-04575
EUNICE MONUMENT SO. UNIT 300 GRBG/SA ✓		30-025-04579
EUNICE MONUMENT SO. UNIT 302 GRBG/SA ✓	P	30-025-04588
EUNICE MONUMENT SO. UNIT 304 GRBG/SA ✓		30-025-04601
EUNICE MONUMENT SO. UNIT 306 GRBG/SA ✓		30-025-04604
EUNICE MONUMENT SO. UNIT 308 GRBG/SA ✓		30-025-04618
EUNICE MONUMENT SO. UNIT 311 GRBG/SA ✓	P	30-025-29600
EUNICE MONUMENT SO. UNIT 313 GRBG/SA ✓	FEDERAL	30-025-04608
EUNICE MONUMENT SO. UNIT 315 GRBG/SA ✓	P	30-025-04600
EUNICE MONUMENT SO. UNIT 317 GRBG/SA ✓		30-025-04590
EUNICE MONUMENT SO. UNIT 319 GRBG/SA ✓		30-025-04584
EUNICE MONUMENT SO. UNIT 321 GRBG/SA ✓		30-025-04570
EUNICE MONUMENT SO. UNIT 323 GRBG/SA ✓		30-025-04555
EUNICE MONUMENT SO. UNIT 325 GRBG/SA ✓		30-025-04556
EUNICE MONUMENT SO. UNIT 335 GRBG/SA ✓		30-025-04558
EUNICE MONUMENT SO. UNIT 351 GRBG/SA ✓		30-025-04622
EUNICE MONUMENT SO. UNIT 352 GRBG/SA ✓		30-025-04625
EUNICE MONUMENT SO. UNIT 353 GRBG/SA ✓		30-025-04630
EUNICE MONUMENT SO. UNIT 355 GRBG/SA ✓		30-025-04636
EUNICE MONUMENT SO. UNIT 361 GRBG/SA ✓		30-025-04655
EUNICE MONUMENT SO. UNIT 369 GRBG/SA ✓	FEDERAL	30-025-04676
EUNICE MONUMENT SO. UNIT 375 GRBG/SA ✓	P	30-025-29837
EUNICE MONUMENT SO. UNIT 377 GRBG/SA ✓		30-025-04689
EUNICE MONUMENT SO. UNIT 385 GRBG/SA ✓		30-025-04650
EUNICE MONUMENT SO. UNIT 387 GRBG/SA ✓		30-025-04645
EUNICE MONUMENT SO. UNIT 389 GRBG/SA ✓		30-025-04631
EUNICE MONUMENT SO. UNIT 392 GRBG/SA ✓		30-025-04632
EUNICE MONUMENT SO. UNIT 395 GRBG/SA ✓		30-025-29821
EUNICE MONUMENT SO. UNIT 397 GRBG/SA ✓		30-025-04646
EUNICE MONUMENT SO. UNIT 401 GRBG/SA ✓		30-025-04667
EUNICE MONUMENT SO. UNIT 407 GRBG/SA ✓	FEDERAL	30-025-24588
EUNICE MONUMENT SO. UNIT 409 GRBG/SA ✓		30-025-04678
EUNICE MONUMENT SO. UNIT 413 GRBG/SA ✓	F	30-025-04673

EUNICE MONUMENT SO. UNIT 417 GRBG/SA ✓		30-025-04686
EUNICE MONUMENT SO. UNIT 419 GRBG/SA ✓		30-025-04695
EUNICE MONUMENT SO. UNIT 440 GRBG/SA ✓		30-025-04735
EUNICE MONUMENT SO. UNIT 449 GRBG/SA ✓		30-025-25351
EUNICE MONUMENT SO. UNIT 450 GRBG/SA ✓	P	30-025-25320
EUNICE MONUMENT SO. UNIT 456 GRBG/SA ✓	FEDERAL	30-025-04736
EUNICE MONUMENT SO. UNIT 458 GRBG/SA ✓	FEDERAL	30-025-29618
EUNICE MONUMENT SO. UNIT 459 GRBG/SA ✓	P	30-025-29826
EUNICE MONUMENT SO. UNIT 554 GRBG/SA ✓		30-025-34845
EUNICE MONUMENT SO. UNIT 560 GRBG/SA ✓		30-025-35461
EUNICE MONUMENT SO. UNIT 561 GRBG/SA ✓		30-025-33595
EUNICE MONUMENT SO. UNIT 562 GRBG/SA ✓		30-025-35462
EUNICE MONUMENT SO. UNIT 574 GRBG/SA ✓		30-025-35160
EUNICE MONUMENT SO. UNIT 575 GRBG/SA ✓		30-025-34824
EUNICE MONUMENT SO. UNIT 576 GRBG/SA ✓		30-025-34640
EUNICE MONUMENT SO. UNIT 577 GRBG/SA ✓		30-025-37318
EUNICE MONUMENT SO. UNIT 584 GRBG/SA ✓		30-025-34139
EUNICE MONUMENT SO. UNIT 585 GRBG/SA ✓		30-025-35157
EUNICE MONUMENT SO. UNIT 597 GRBG/SA ✓		30-025-35158
EUNICE MONUMENT SO. UNIT 609 GRBG/SA ✓		30-025-31406
EUNICE MONUMENT SO. UNIT 610 GRBG/SA ✓		30-025-31407
EUNICE MONUMENT SO. UNIT 612 GRBG/SA ✓		30-025-35159
EUNICE MONUMENT SO. UNIT 613 GRBG/SA ✓		30-025-35161
EUNICE MONUMENT SO. UNIT 614 GRBG/SA ✓		30-025-35453
EUNICE MONUMENT SO. UNIT 620 GRBG/SA ✓		30-025-30511
EUNICE MONUMENT SO. UNIT 621 GRBG/SA ✓		30-025-33186
EUNICE MONUMENT SO. UNIT 623 GRBG/SA ✓		30-025-35455
EUNICE MONUMENT SO. UNIT 624 GRBG/SA ✓		30-025-31408
EUNICE MONUMENT SO. UNIT 626 GRBG/SA ✓	FEDERAL	30-025-31465
EUNICE MONUMENT SO. UNIT 628 GRBG/SA ✓	FEDERAL	30-025-37279
EUNICE MONUMENT SO. UNIT 638 GRBG/SA ✓		30-025-31426
EUNICE MONUMENT SO. UNIT 639 GRBG/SA ✓		30-025-31409
EUNICE MONUMENT SO. UNIT 640 GRBG/SA ✓		30-025-34212
EUNICE MONUMENT SO. UNIT 641 GRBG/SA ✓	FEDERAL	30-025-33189
EUNICE MONUMENT SO. UNIT 642 GRBG/SA ✓		30-025-30958
EUNICE MONUMENT SO. UNIT 649 GRBG/SA ✓	FEDERAL	30-025-33187
EUNICE MONUMENT SO. UNIT 650 GRBG/SA ✓	P	30-025-33800
EUNICE MONUMENT SO. UNIT 653 GRBG/SA ✓		30-025-34213
EUNICE MONUMENT SO. UNIT 658 GRBG/SA ✓		30-025-37280
EUNICE MONUMENT SO. UNIT 660 GRBG/SA ✓		30-025-37319
EUNICE MONUMENT SO. UNIT 669 GRBG/SA ✓		30-025-34138
EUNICE MONUMENT SO. UNIT 670 GRBG/SA ✓		30-025-34214
EUNICE MONUMENT SO. UNIT 671 GRBG/SA ✓	P	30-025-35456
EUNICE MONUMENT SO. UNIT 673 GRBG/SA ✓	FEDERAL	30-025-37320
EUNICE MONUMENT SO. UNIT 676 GRBG/SA ✓	FEDERAL	30-025-35457
EUNICE MONUMENT SO. UNIT 681 GRBG/SA ✓	P	30-025-37281
EUNICE MONUMENT SO. UNIT 688 GRBG/SA ✓		30-025-35205



EUNICE MONUMENT SO. UNIT 695 GRBG/SA —		30-025-35162
EUNICE MONUMENT SO. UNIT 697 GRBG/SA —		30-025-35163
EUNICE MONUMENT SO. UNIT 698 GRBG/SA —		30-025-34847
EUNICE MONUMENT SO. UNIT 699 GRBG/SA —		30-025-34215
EUNICE MONUMENT SO. UNIT 707 GRBG/SA —		30-025-35164
EUNICE MONUMENT SO. UNIT 708 GRBG/SA —		30-025-34848
EUNICE MONUMENT SO. UNIT 709 GRBG/SA —		30-025-34849
EUNICE MONUMENT SO. UNIT 711 GRBG/SA —		30-025-34850
EUNICE MONUMENT SO. UNIT 713 GRBG/SA —		30-025-37321
EUNICE MONUMENT SO. UNIT 734 GRBG/SA —		30-025-34851
EUNICE MONUMENT SO. UNIT 735 GRBG/SA —		30-025-34826
EUNICE MONUMENT SO. UNIT 736 GRBG/SA —		30-025-34852
EUNICE MONUMENT SO. UNIT 737 GRBG/SA —		30-025-34853
EUNICE MONUMENT SO. UNIT 738 GRBG/SA —		30-025-35165
EUNICE MONUMENT SO. UNIT 739 GRBG/SA —		30-025-35458
EUNICE MONUMENT SO. UNIT 746 GRBG/SA —		30-025-37356
EUNICE MONUMENT SO. UNIT 747 GRBG/SA —		30-025-35167
EUNICE MONUMENT SO. UNIT 748 GRBG/SA —		30-025-34632
EUNICE MONUMENT SO. UNIT 749 GRBG/SA —		30-025-34641
EUNICE MONUMENT SO. UNIT 750 GRBG/SA —		30-025-35168
EUNICE MONUMENT SO. UNIT 774 GRBG/SA —	FEDERAL	30-025-35166
EUNICE MONUMENT SO. UNIT 775 GRBG/SA —	FEDERAL	30-025-35459
EUNICE MONUMENT SO. UNIT 776 GRBG/SA —	S	30-025-35460

BUREAU OF LAND MANAGEMENT  
Carlsbad Field Office  
620 East Greene Street  
Carlsbad, New Mexico 88220  
575-234-5972

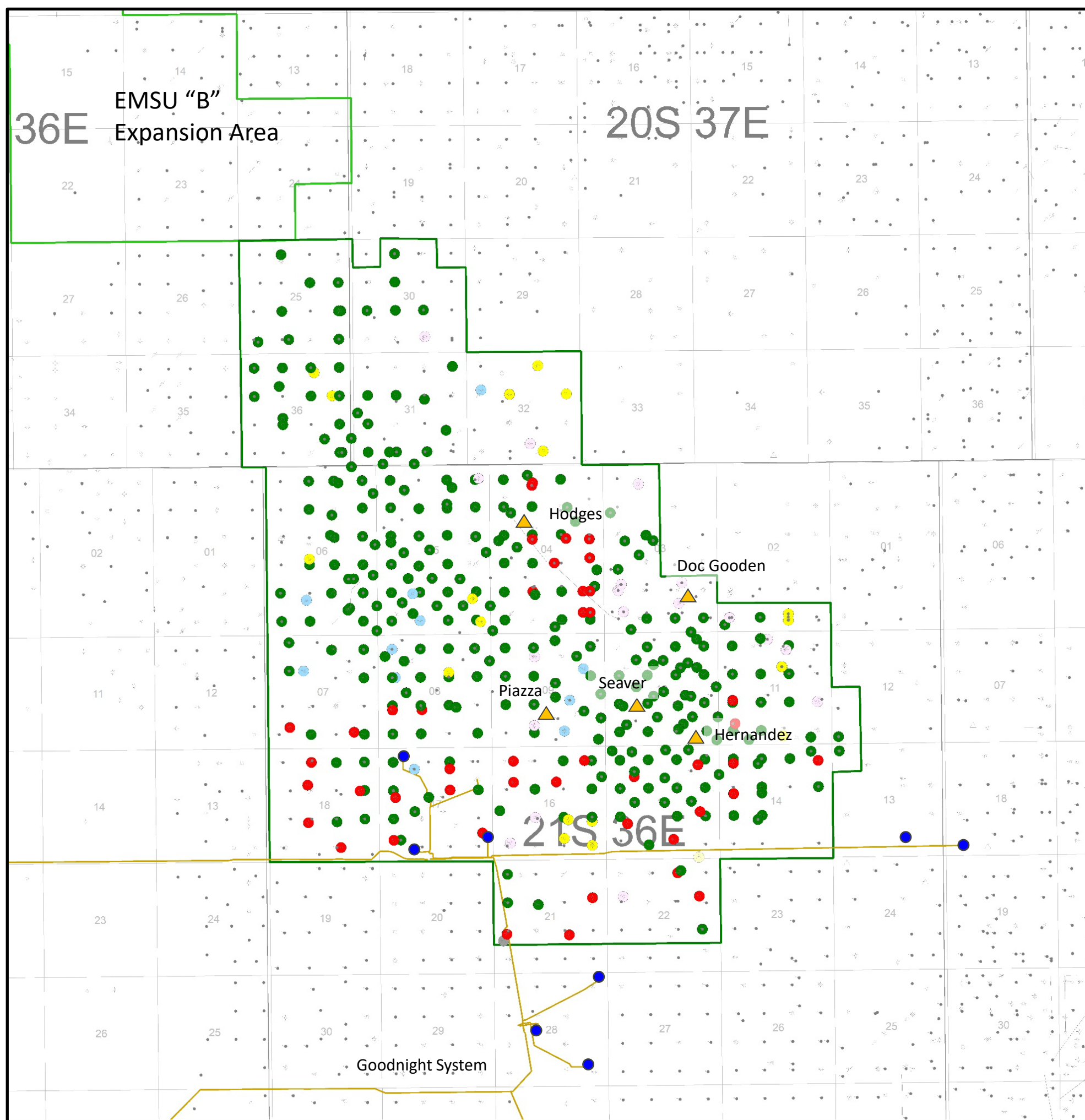
6/27/2013

Condition of Approval to Flare Gas

1. Report all volumes on OGOR reports.
2. Comply with NTL-4A requirements
3. Subject to like approval from NMOCD
4. **Flared volumes will still require payment of royalties**
5. Install gas meter on vent/flare line to measure gas prior to venting/flaring operations if it is not equipped as such at this time. Gas meter to meet all requirements for sale meter as Federal Regulations and Onshore Order #5.
6. This approval does not authorize any additional surface disturbance.
7. Submit updated facility diagram as per Onshore Order #3.
8. Approval not to exceed 90 days for date of approval.
9. Submit Subsequent Report with actual volumes of gas flared for each month gas is flared.
10. If flaring is still required past 90 days submit new request for approval.
11. If a portable unit is used to flare gas it must be monitored at all times.
12. Comply with any restrictions or regulations when on State or Fee surface.

JDB6272013





**Active Operators Inside the EMSU**  
Operator - Color Code

- Empire - 297
- Penroc - 43
- Forty Acres - 18
- Apache - 11
- OWL - 1
- Rice - 2
- Goodnight - 4
- All Others - 18

<b>Eunice Monument South Unit (EMSU) Active Operators</b>		
<b>Author:</b> PM/JCB	<b>FMSU Operators</b>	<b>Date:</b> 24 October, 2023

BEFORE THE OIL CONSERVATION DIVISION  
Santa Fe, New Mexico  
Exhibit No. B-20  
Submitted by: Goodnight Midstream Permian, LLC  
Hearing Date: November 2, 2023  
Case Nos. 23614-23617



BO/d Bubble Maps  
Log Data Coverage (XOM & NUTECH)  
EMSU "A" – CO2 Pilot High-Grade

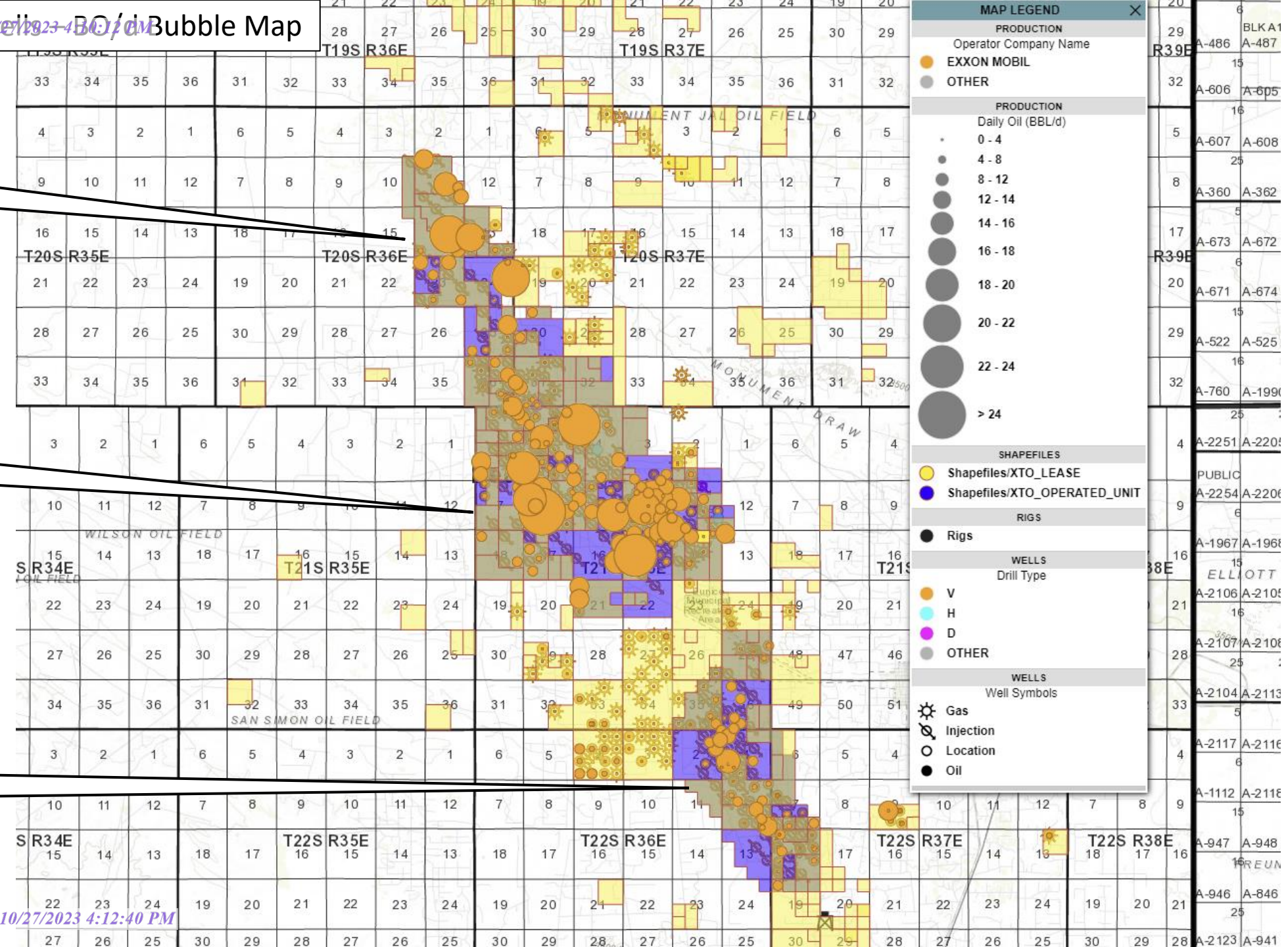
BEFORE THE OIL CONSERVATION DIVISION  
Santa Fe, New Mexico  
Exhibit No. B-21  
Submitted by: Goodnight Midstream Permian, LLC  
Hearing Date: November 2, 2023  
Case Nos. 23614-23617



EMSU "B"

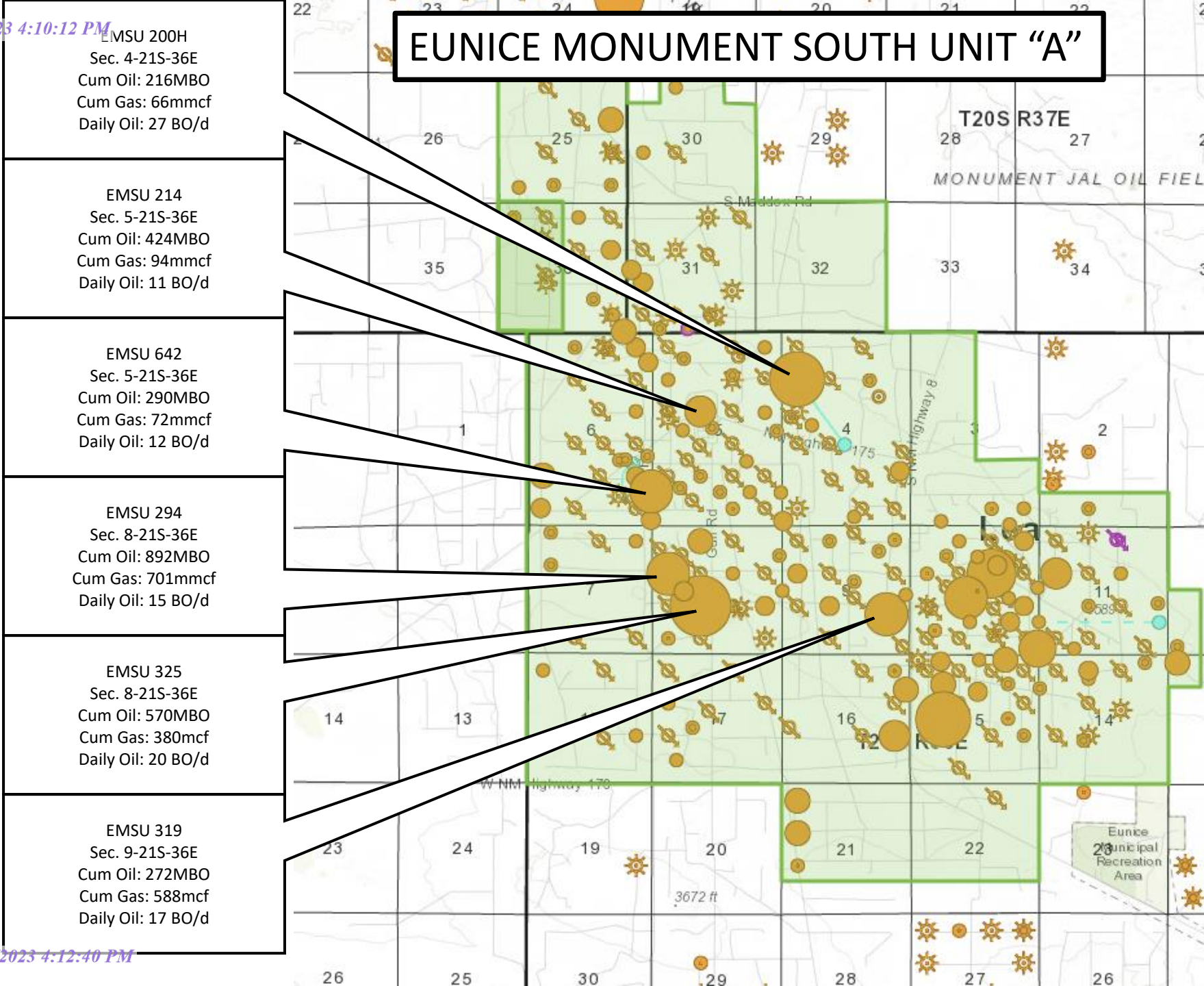
EMSU "A"

AGU





# EUNICE MONUMENT SOUTH UNIT "A"



<p>EMSU 200H          Sec. 4-21S-36E          Cum Oil: 216MBO          Cum Gas: 66mmcf          Daily Oil: 27 BO/d</p>
<p>EMSU 214          Sec. 5-21S-36E          Cum Oil: 424MBO          Cum Gas: 94mmcf          Daily Oil: 11 BO/d</p>
<p>EMSU 642          Sec. 5-21S-36E          Cum Oil: 290MBO          Cum Gas: 72mmcf          Daily Oil: 12 BO/d</p>
<p>EMSU 294          Sec. 8-21S-36E          Cum Oil: 892MBO          Cum Gas: 701mmcf          Daily Oil: 15 BO/d</p>
<p>EMSU 325          Sec. 8-21S-36E          Cum Oil: 570MBO          Cum Gas: 380mcf          Daily Oil: 20 BO/d</p>
<p>EMSU 319          Sec. 9-21S-36E          Cum Oil: 272MBO          Cum Gas: 588mcf          Daily Oil: 17 BO/d</p>

**MAP LEGEND**

**PRODUCTION**

Operator Company Name

- EXXON MOBIL
- OTHER

**PRODUCTION**

Daily Oil (BBL/d)

- 0 - 4
- 4 - 8
- 8 - 12
- 12 - 14
- 14 - 16
- 16 - 18
- 18 - 20
- 20 - 22
- 22 - 24
- > 24

**RIGS**

- Rigs

**WELLS**

Drill Type

- V
- H
- D
- OTHER

**WELLS**

Well Symbols

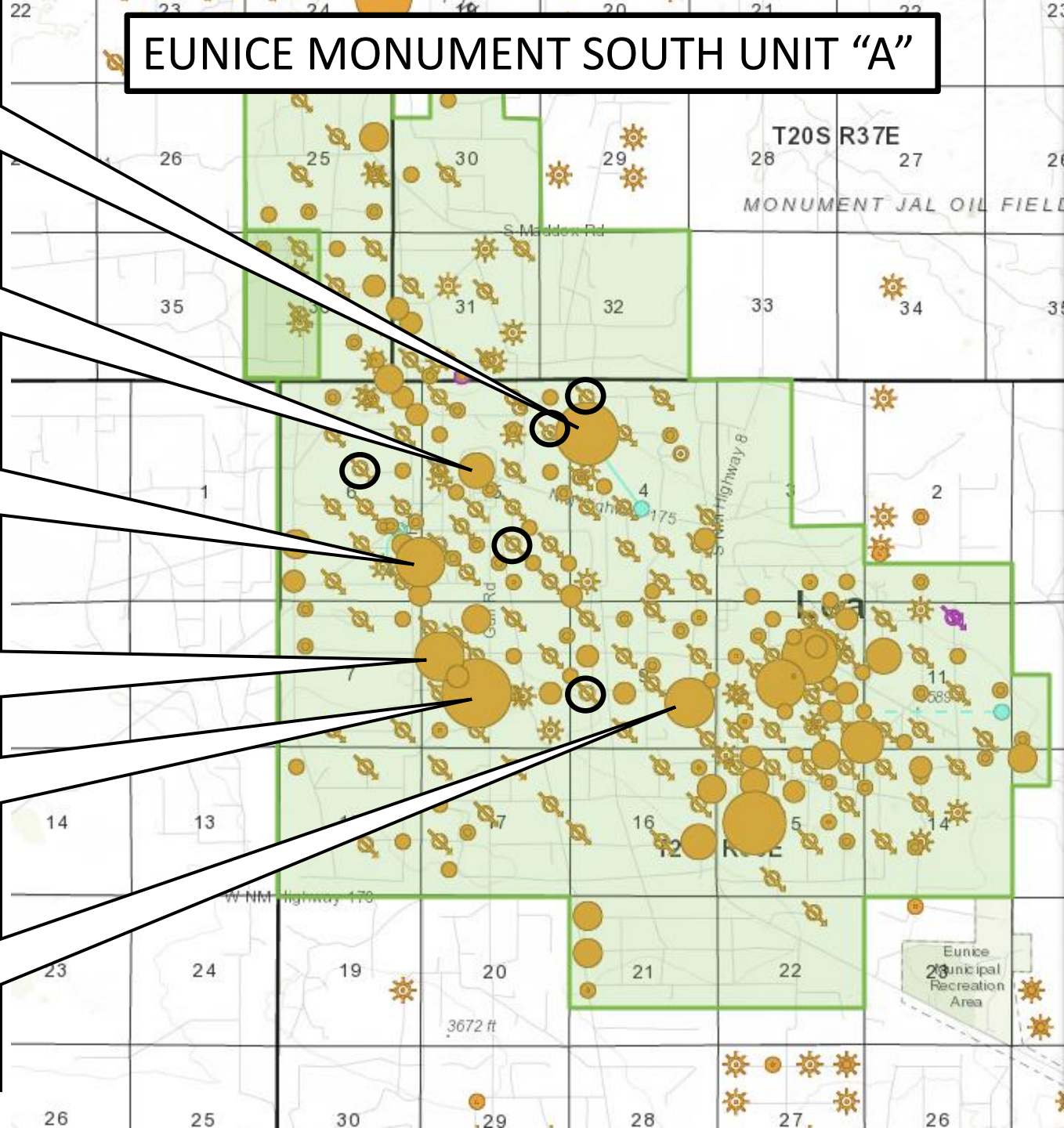
- Gas
- Injection
- Location
- Oil



# EUNICE MONUMENT SOUTH UNIT "A"

EMSU 183 INJ  
 EMSU 226 INJ  
 EMSU 199 INJ  
 EMSU 322 INJ  
 EMSU 217 INJ

EMSU 200H Sec. 4-21S-36E Cum Oil: 216MBO Cum Gas: 66mmcf Daily Oil: 27 BO/d
EMSU 214 Sec. 5-21S-36E Cum Oil: 424MBO Cum Gas: 94mmcf Daily Oil: 11 BO/d
EMSU 642 Sec. 5-21S-36E Cum Oil: 290MBO Cum Gas: 72mmcf Daily Oil: 12 BO/d
EMSU 294 Sec. 8-21S-36E Cum Oil: 892MBO Cum Gas: 701mmcf Daily Oil: 15 BO/d
EMSU 325 Sec. 8-21S-36E Cum Oil: 570MBO Cum Gas: 380mcf Daily Oil: 20 BO/d
EMSU 319 Sec. 9-21S-36E Cum Oil: 272MBO Cum Gas: 588mcf Daily Oil: 17 BO/d



**MAP LEGEND**

**PRODUCTION**

Operator Company Name

- EXXON MOBIL
- OTHER

**PRODUCTION**

Daily Oil (BBL/d)

- 0 - 4
- 4 - 8
- 8 - 12
- 12 - 14
- 14 - 16
- 16 - 18
- 18 - 20
- 20 - 22
- 22 - 24
- > 24

**RIGS**

- Rigs

**WELLS**

Drill Type

- V
- H
- D
- OTHER

**WELLS**

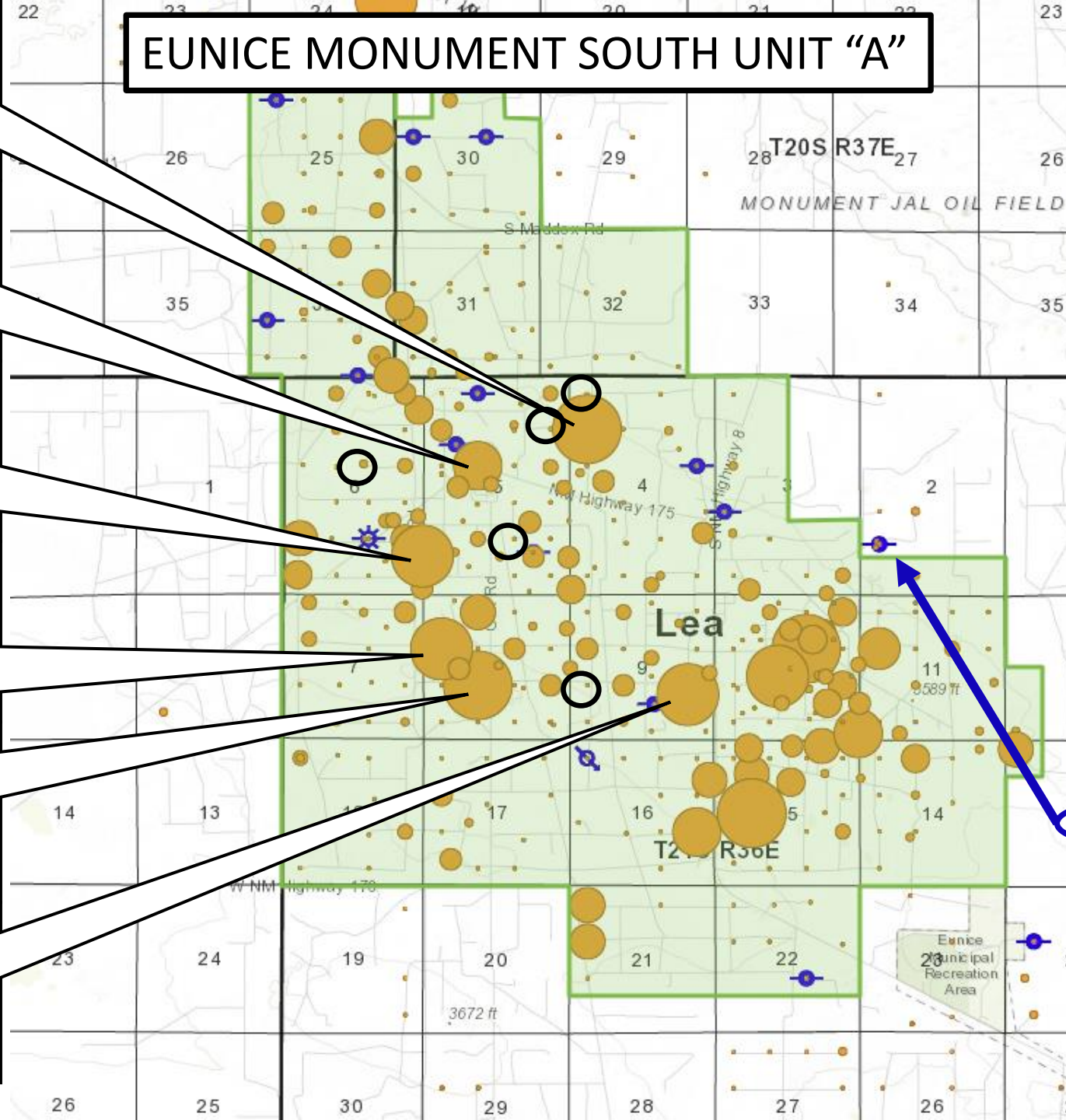
Well Symbols

- Gas
- Injection
- Location
- Oil

# EUNICE MONUMENT SOUTH UNIT "A"

EMSU 183 INJ  
 EMSU 226 INJ  
 EMSU 199 INJ  
 EMSU 322 INJ  
 EMSU 217 INJ

EMSU 200H Sec. 4-21S-36E Cum Oil: 216MBO Cum Gas: 66mmcf Daily Oil: 27 BO/d
EMSU 214 Sec. 5-21S-36E Cum Oil: 424MBO Cum Gas: 94mmcf Daily Oil: 11 BO/d
EMSU 642 Sec. 5-21S-36E Cum Oil: 290MBO Cum Gas: 72mmcf Daily Oil: 12 BO/d
EMSU 294 Sec. 8-21S-36E Cum Oil: 892MBO Cum Gas: 701mmcf Daily Oil: 15 BO/d
EMSU 325 Sec. 8-21S-36E Cum Oil: 570MBO Cum Gas: 380mcf Daily Oil: 20 BO/d
EMSU 319 Sec. 9-21S-36E Cum Oil: 272MBO Cum Gas: 588mcf Daily Oil: 17 BO/d



**MAP LEGEND**

Operator Company Name

- EXXON MOBIL
- OTHER

**PRODUCTION**

Daily Oil (BBL/d)

- 0 - 3
- 3 - 6
- 6 - 9
- 9 - 12
- 12 - 14
- 14 - 15
- 15 - 17
- 17 - 18
- 18 - 21
- > 21

**RIGS**

- Rigs

**WELLS**

Well Status

- TA
- OTHER

**WELLS**

Well Symbols

- Gas Shut-in
- Injection
- Location Shut-in
- Oil Shut-in



# EUNICE MONUMENT SOUTH UNIT "A"

EMSU 183 INJ  
 EMSU 226 INJ  
 EMSU 199 INJ  
 EMSU 322 INJ  
 EMSU 217 INJ

EMSU 200H  
 Sec. 4-21S-36E  
 Cum Oil: 216MBO  
 Cum Gas: 66mmcf  
 Daily Oil: 27 BO/d

EMSU 214  
 Sec. 5-21S-36E  
 Cum Oil: 424MBO  
 Cum Gas: 94mmcf  
 Daily Oil: 11 BO/d

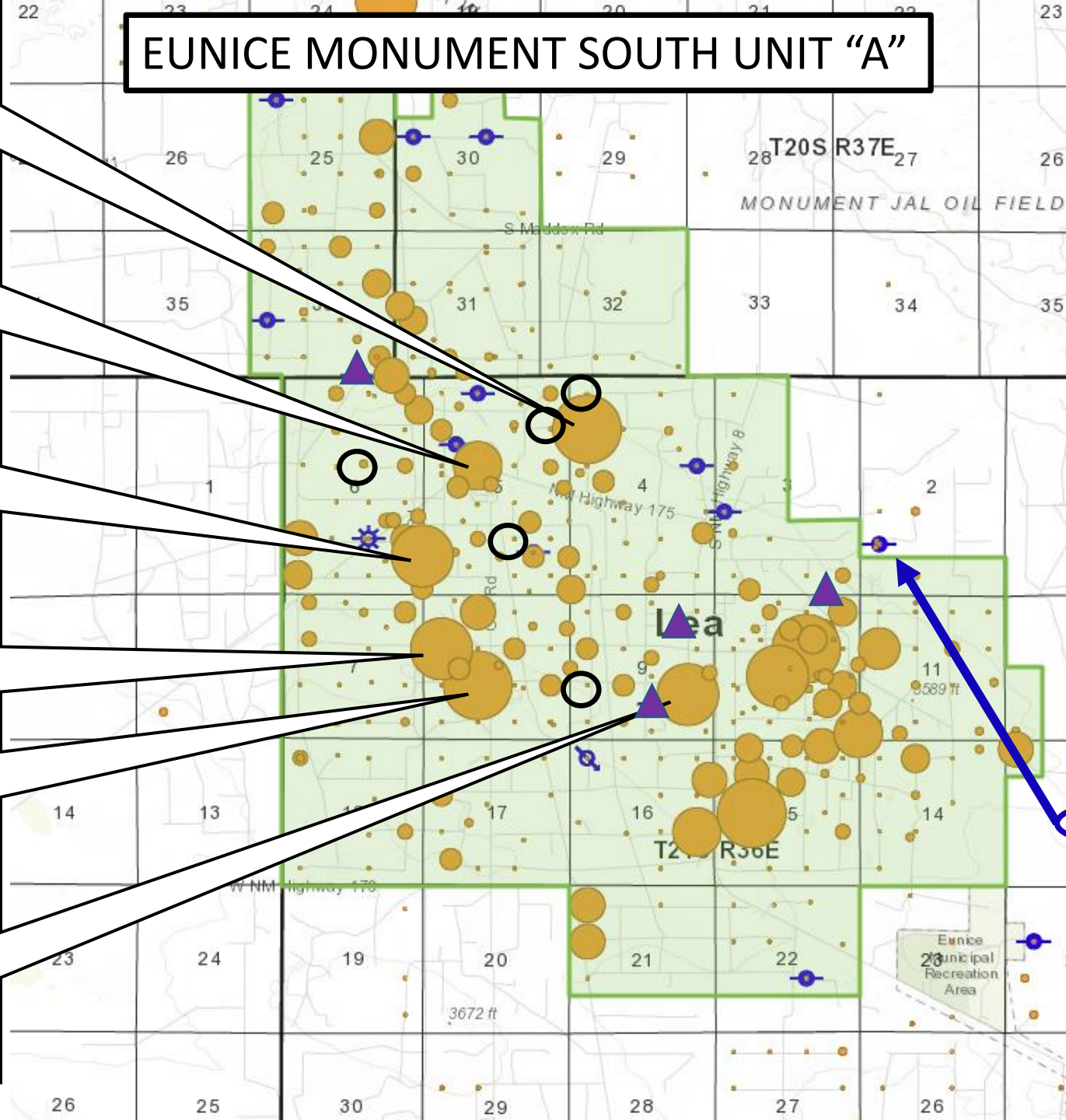
EMSU 642  
 Sec. 5-21S-36E  
 Cum Oil: 290MBO  
 Cum Gas: 72mmcf  
 Daily Oil: 12 BO/d

EMSU 294  
 Sec. 8-21S-36E  
 Cum Oil: 892MBO  
 Cum Gas: 701mmcf  
 Daily Oil: 15 BO/d

EMSU 325  
 Sec. 8-21S-36E  
 Cum Oil: 570MBO  
 Cum Gas: 380mcf  
 Daily Oil: 20 BO/d

EMSU 319  
 Sec. 9-21S-36E  
 Cum Oil: 272MBO  
 Cum Gas: 588mcf  
 Daily Oil: 17 BO/d

**NUTECH Log**  
 EMSU 660  
 EMSU 673  
 EMSU 713 (TA)  
 EMSU 577 (TA)



**MAP LEGEND**

Operator Company Name

- EXXON MOBIL
- OTHER

**PRODUCTION**

Daily Oil (BBL/d)

- 0 - 3
- 3 - 6
- 6 - 9
- 9 - 12
- 12 - 14
- 14 - 15
- 15 - 17
- 17 - 18
- 18 - 21
- > 21

**RIGS**

- Rigs

**WELLS**

Well Status

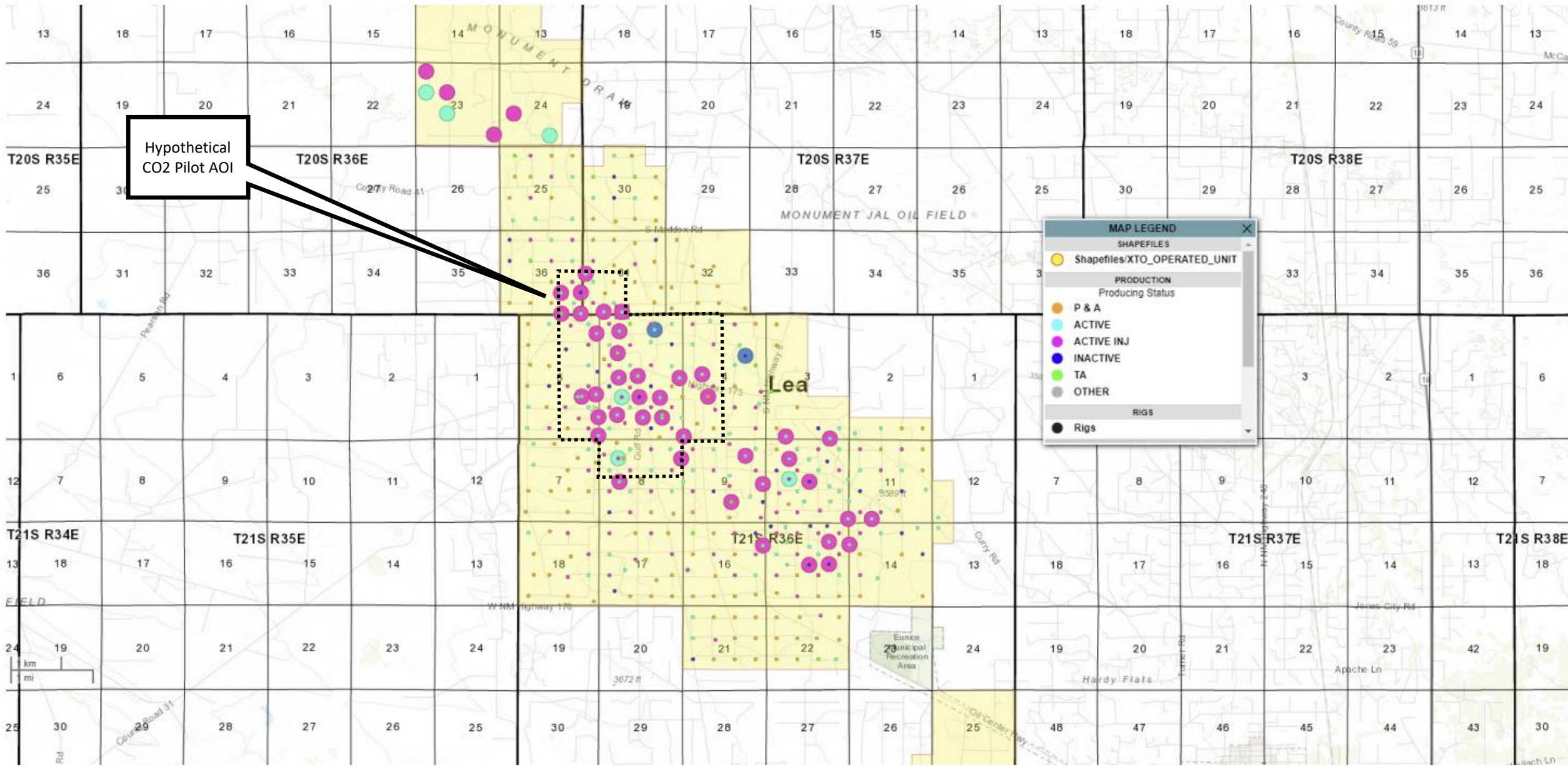
- TA
- OTHER

**WELLS**

Well Symbols

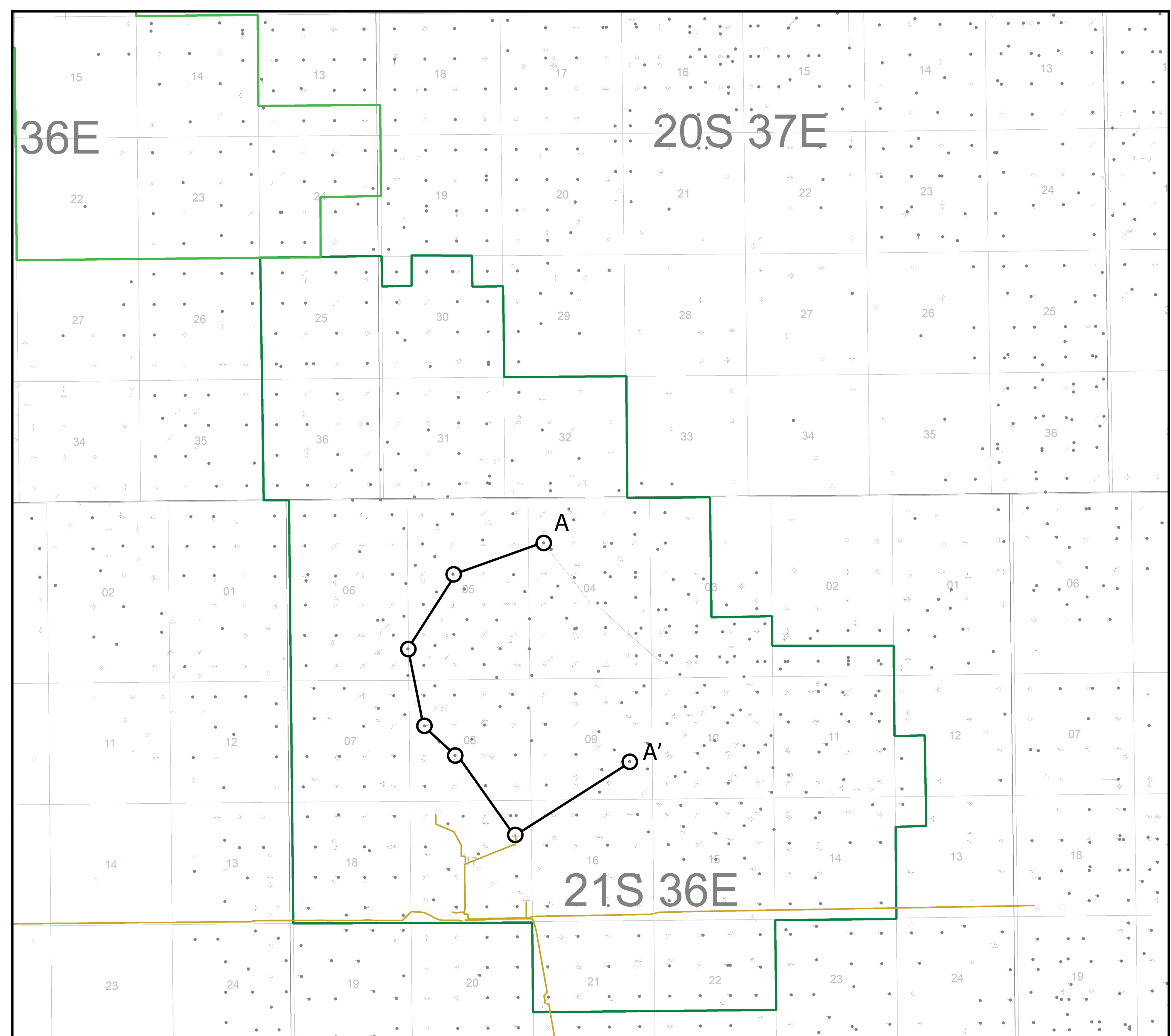
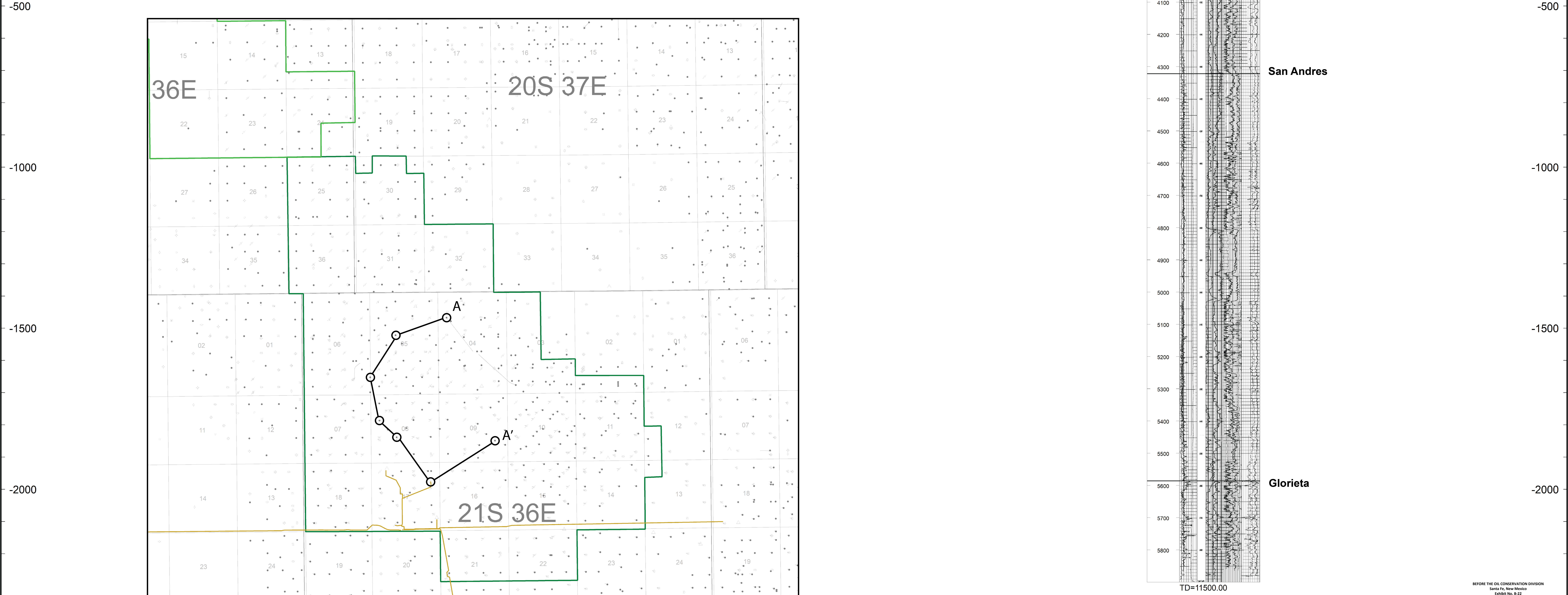
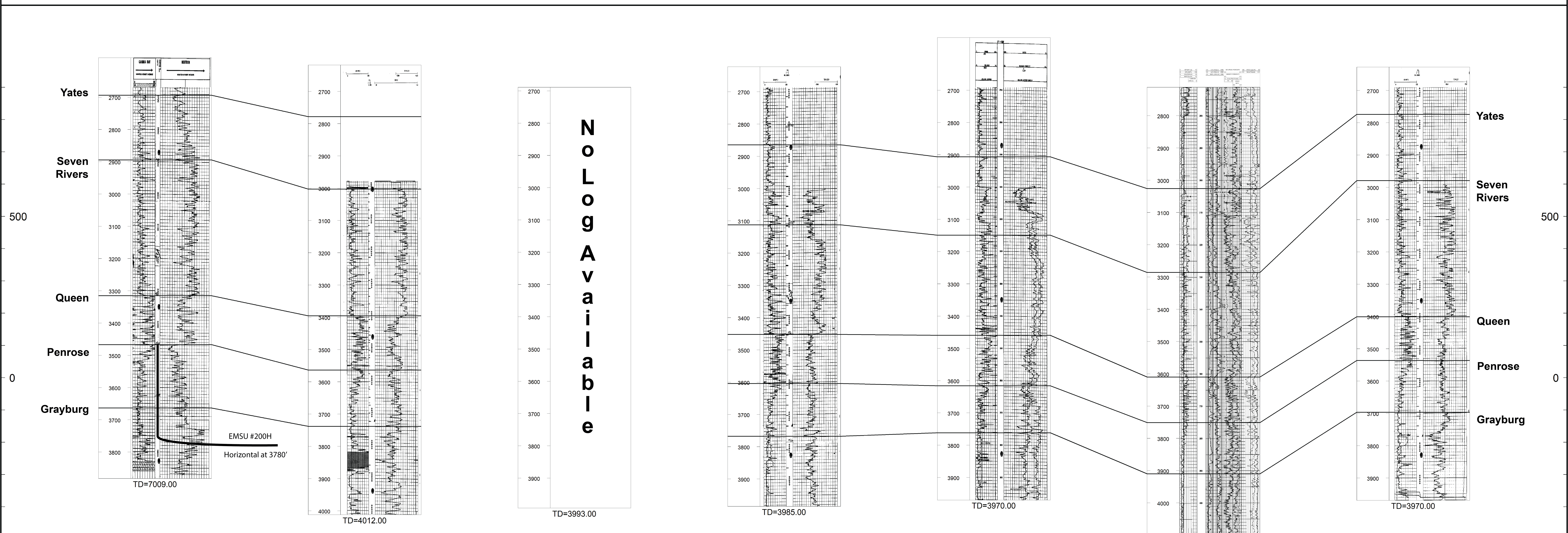
- Gas Shut-in
- Injection
- Location Shut-in
- Oil Shut-in

# LOG DATA COVERAGE





Alt ID=04492	4172 ft	Alt ID=04507	3806 ft	Alt ID=30958	3420 ft	Alt ID=04562	1859 ft	Alt ID=04556	4294 ft	Alt ID=43901	5889 ft	Alt ID=04584
Empire New Mexico LLC EMSU 200 TWP: 21 S - Range: 36 E - Sec. 4 Datum = 3569.00		Empire New Mexico LLC EMSU 214 TWP: 21 S - Range: 36 E - Sec. 5 Datum = 3587.00		Empire New Mexico LLC EMSU 642 TWP: 21 S - Range: 36 E - Sec. 6 Datum = 3589.00		Empire New Mexico LLC EMSU 294 TWP: 21 S - Range: 36 E - Sec. 8 Datum = 3586.00		Empire New Mexico LLC EMSU 325 TWP: 21 S - Range: 36 E - Sec. 8 Datum = 3591.00		GOODNIGHT MIDSTREAM PERMIAN, LLC RYNO 17-1 TWP: 21 S - Range: 36 E - Sec. 17 Datum = 3612.00		Empire New Mexico LLC EMSU 319 TWP: 21 S - Range: 36 E - Sec. 9 Datum = 3590.00










SUBSCRIBED AND SWORN to before me this 26th day of October, 2023 by Adam G.

Rankin.



Notary Public

My Commission Expires:

06/28/26

STATE OF NEW MEXICO  
NOTARY PUBLIC  
KARI D PEREZ  
COMMISSION # 1138272  
COMMISSION EXPIRES 06/28/2026



**Adam G. Rankin**  
**Partner**  
**Phone** (505) 988-4421  
**Fax:** (505) 983-6043  
agrarkin@hollandhart.com

June 16, 2023

**VIA CERTIFIED MAIL**  
**CERTIFIED RECEIPT REQUESTED**

**TO: Empire New Mexico LLC**

**Re: Application of Goodnight Midstream Permian, LLC for Approval of a Saltwater Disposal Well, Lea County, New Mexico.**  
**Doc Gooden SWD #1 Well**

Ladies & Gentlemen:

This letter is to advise you that Goodnight Midstream Permian, LLC has filed the enclosed application with the New Mexico Oil Conservation Division. A hearing has been requested before a Division Examiner on July 6, 2023, and the status of the hearing can be monitored through the Division’s website at <https://www.emnrd.nm.gov/ocd/>.

**Due to the remodeling of the state building where the New Mexico Oil Conservation Division is located, hearings will be conducted remotely beginning at 8:15 a.m. To participate in the electronic hearing, see the instructions posted on the OCD Hearings website: <https://www.emnrd.nm.gov/ocd/hearing-info/>.**

You are not required to attend this hearing, but as an owner of an interest that may be affected by this application, you may appear and present testimony. Failure to appear at that time and become a party of record will preclude you from challenging the matter at a later date. Parties appearing in cases are required to file a Pre-hearing Statement four business days in advance of a scheduled hearing that complies with the provisions of NMAC 19.15.4.13.B.

If you have any questions about this matter please contact Nate Alleman at Ace Energy Advisors at (918) 237-0559 or nate.alleman@aceadvisors.com.

Sincerely,

**Adam G. Rankin**  
**ATTORNEY FOR GOODNIGHT MIDSTREAM**  
**PERMIAN, LLC**

**Location**  
110 North Guadalupe, Suite 1  
Santa Fe, NM 87501-1849

**Mailing Address**  
P.O. Box 2208  
Santa Fe, NM 87504-2208

**Contact**  
p: 505.988.4421 | f: 595.983.6043  
www.hollandhart.com

Holland & Hart LLP Anchorage Aspen Billings Boise Boulder Cheyenne Denver Jackson Hole Las Vegas Reno Salt Lake City Santa Fe Washington, D.C.





**Adam G. Rankin**  
**Partner**  
**Phone** (505) 988-4421  
**Fax:** (505) 9836043  
agrarkin@hollandhart.com

June 16, 2023

**VIA CERTIFIED MAIL**  
**CERTIFIED RECEIPT REQUESTED**

**TO: Empire New Mexico LLC**

**Re: Application of Goodnight Midstream Permian, LLC for Approval of a Saltwater Disposal Well, Lea County, New Mexico.  
Hernandez SWD #1 Well**

Ladies & Gentlemen:

This letter is to advise you that Goodnight Midstream Permian, LLC has filed the enclosed application with the New Mexico Oil Conservation Division. A hearing has been requested before a Division Examiner on July 6, 2023, and the status of the hearing can be monitored through the Division’s website at <https://www.emnrd.nm.gov/ocd/>.

**Due to the remodeling of the state building where the New Mexico Oil Conservation Division is located, hearings will be conducted remotely beginning at 8:15 a.m. To participate in the electronic hearing, see the instructions posted on the OCD Hearings website: <https://www.emnrd.nm.gov/ocd/hearing-info/>.**

You are not required to attend this hearing, but as an owner of an interest that may be affected by this application, you may appear and present testimony. Failure to appear at that time and become a party of record will preclude you from challenging the matter at a later date. Parties appearing in cases are required to file a Pre-hearing Statement four business days in advance of a scheduled hearing that complies with the provisions of NMAC 19.15.4.13.B.

If you have any questions about this matter please contact Nate Alleman at Ace Energy Advisors at (918) 237-0559 or nate.alleman@aceadvisors.com.

Sincerely,

**Adam G. Rankin**  
**ATTORNEY FOR GOODNIGHT MIDSTREAM**  
**PERMIAN, LLC**

**Location**  
110 North Guadalupe, Suite 1  
Santa Fe, NM 87501-1849

**Mailing Address**  
P.O. Box 2208  
Santa Fe, NM 87504-2208

**Contact**  
p: 505.988.4421 | f: 595.983.6043  
www.hollandhart.com

Holland & Hart LLP Anchorage Aspen Billings Boise Boulder Cheyenne Denver Jackson Hole Las Vegas Reno Salt Lake City Santa Fe Washington, D.C.



**Adam G. Rankin**  
**Partner**  
**Phone** (505) 988-4421  
**Fax:** (505) 9836043  
agrarkin@hollandhart.com

June 16, 2023

**VIA CERTIFIED MAIL**  
**CERTIFIED RECEIPT REQUESTED**

**TO: Empire New Mexico LLC**

**Re: Application of Goodnight Midstream Permian, LLC for Approval of a Saltwater Disposal Well, Lea County, New Mexico.**  
**Hodges SWD #1 Well**

Ladies & Gentlemen:

This letter is to advise you that Goodnight Midstream Permian, LLC has filed the enclosed application with the New Mexico Oil Conservation Division. A hearing has been requested before a Division Examiner on July 6, 2023, and the status of the hearing can be monitored through the Division’s website at <https://www.emnrd.nm.gov/ocd/>.

**Due to the remodeling of the state building where the New Mexico Oil Conservation Division is located, hearings will be conducted remotely beginning at 8:15 a.m. To participate in the electronic hearing, see the instructions posted on the OCD Hearings website: <https://www.emnrd.nm.gov/ocd/hearing-info/>.**

You are not required to attend this hearing, but as an owner of an interest that may be affected by this application, you may appear and present testimony. Failure to appear at that time and become a party of record will preclude you from challenging the matter at a later date. Parties appearing in cases are required to file a Pre-hearing Statement four business days in advance of a scheduled hearing that complies with the provisions of NMAC 19.15.4.13.B.

If you have any questions about this matter please contact Nate Alleman at Ace Energy Advisors at (918) 237-0559 or [nate.alleman@aceadvisors.com](mailto:nate.alleman@aceadvisors.com).

Sincerely,

**Adam G. Rankin**  
**ATTORNEY FOR GOODNIGHT MIDSTREAM**  
**PERMIAN, LLC**

**Location**  
110 North Guadalupe, Suite 1  
Santa Fe, NM 87501-1849

**Mailing Address**  
P.O. Box 2208  
Santa Fe, NM 87504-2208

**Contact**  
p: 505.988.4421 | f: 595.983.6043  
[www.hollandhart.com](http://www.hollandhart.com)

Holland & Hart LLP Anchorage Aspen Billings Boise Boulder Cheyenne Denver Jackson Hole Las Vegas Reno Salt Lake City Santa Fe Washington, D.C.





**Adam G. Rankin**  
**Partner**  
**Phone** (505) 988-4421  
**Fax:** (505) 9836043  
agrankin@hollandhart.com

June 16, 2023

**VIA CERTIFIED MAIL**  
**CERTIFIED RECEIPT REQUESTED**

**TO: Empire New Mexico LLC**

**Re: Application of Goodnight Midstream Permian, LLC for Approval of a Salt Water Disposal Well, Lea County, New Mexico.**  
**Seaver SWD #1 Well**

Ladies & Gentlemen:

This letter is to advise you that Goodnight Midstream Permian, LLC has filed the enclosed application with the New Mexico Oil Conservation Division. A hearing has been requested before a Division Examiner on July 6, 2023, and the status of the hearing can be monitored through the Division's website at <https://www.emnrd.nm.gov/ocd/>.

**Due to the remodeling of the state building where the New Mexico Oil Conservation Division is located, hearings will be conducted remotely beginning at 8:15 a.m. To participate in the electronic hearing, see the instructions posted on the OCD Hearings website: <https://www.emnrd.nm.gov/ocd/hearing-info/>.**

You are not required to attend this hearing, but as an owner of an interest that may be affected by this application, you may appear and present testimony. Failure to appear at that time and become a party of record will preclude you from challenging the matter at a later date. Parties appearing in cases are required to file a Pre-hearing Statement four business days in advance of a scheduled hearing that complies with the provisions of NMAC 19.15.4.13.B.

If you have any questions about this matter please contact Nate Alleman at Ace Energy Advisors at (918) 237-0559 or nate.alleman@aceadvisors.com.

Sincerely,

**Adam G. Rankin**  
**ATTORNEY FOR GOODNIGHT MIDSTREAM**  
**PERMIAN, LLC**

**Location**  
110 North Guadalupe, Suite 1  
Santa Fe, NM 87501-1849

**Mailing Address**  
P.O. Box 2208  
Santa Fe, NM 87504-2208

**Contact**  
p: 505.988.4421 | f: 595.983.6043  
www.hollandhart.com

Holland & Hart LLP Anchorage Aspen Billings Boise Boulder Cheyenne Denver Jackson Hole Las Vegas Reno Salt Lake City Santa Fe Washington, D.C.

Goodnight - Doc Gooden, Hernandez, Hodges and Seavers SWD #1 wells  
Case nos. 23614-23617 - Postal Delivery Report

Tracking Number	Recipient	Status
921489019403831938759	Empire New Mexico LLC 2200 S Utice Pl Suite 150 Tulsa OK 74114	In-Transit