

DISTRICT I
1625 N. French Dr., Hobbs, N.M. 88240
Phone: (575) 393-6161 Fax: (575) 393-0720

DISTRICT II
811 S. First St., Artesia, N.M. 88210
Phone: (575) 748-1283 Fax: (575) 748-9720

DISTRICT III
1000 Rio Brazos Rd., Aztec, N.M. 87410
Phone: (505) 334-6178 Fax: (505) 334-6170

DISTRICT IV
1220 S. St. Francis Dr., Santa Fe, N.M. 87505
Phone: (505) 476-3480 Fax: (505) 476-3482

State of New Mexico
Energy, Minerals & Natural Resources Department

Form C-102

Revised August 1, 2011

Submit one copy to appropriate
District Office

OIL CONSERVATION DIVISION
1220 South St. Francis Dr.
Santa Fe, N.M. 87505

AMENDED REPORT

WELL LOCATION AND ACREAGE DEDICATION PLAT

¹ API Number		² Pool Code 58960		³ Pool Name Teas; Bone Spring	
⁴ Property Code		⁵ Property Name SANDRA JEAN 23 FED COM			⁶ Well Number 75IH
⁷ OGRID No. 330396		⁸ Operator Name AVANT OPERATING, LLC			⁹ Elevation 3639

¹⁰ Surface Location

UL or lot no.	Section	Township	Range	Lot Idn	Feet from the	North/South line	Feet from the	East/West line	County
P	23	20 S	33 E		200	SOUTH	772	EAST	LEA

¹¹ Bottom Hole Location If Different From Surface

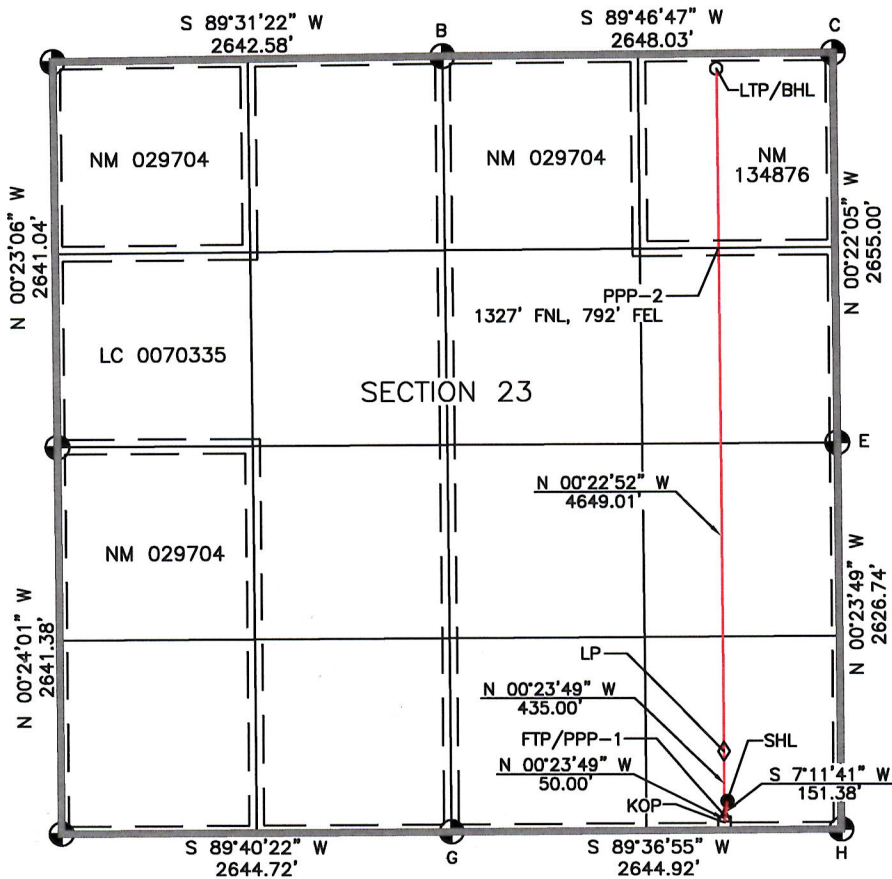
UL or lot no.	Section	Township	Range	Lot Idn	Feet from the	North/South line	Feet from the	East/West line	County
A	23	20 S	33 E		100	NORTH	792	EAST	LEA

¹² Dedicated Acres SECTION 23: 640 Ac.	¹³ Joint or Infill	¹⁴ Consolidation Code	¹⁵ Order No.
--	-------------------------------	----------------------------------	-------------------------

NO ALLOWABLE WILL BE ASSIGNED TO THIS COMPLETION UNTIL ALL INTERESTS HAVE BEEN CONSOLIDATED OR A NON-STANDARD UNIT HAS BEEN APPROVED BY THE DIVISION

¹⁶ Legend:

- = SURFACE LOCATION (SHL)
- = LTP/BHL
- △ = FTP/PPP-1
- = KICK OFF POINT (KOP)
- ◇ = LANDING POINT (LP)
- ⊙ = FOUND 1912 USGLO BRASS CAP



¹⁷ OPERATOR CERTIFICATION

I hereby certify that the information contained herein is true and complete to the best of my knowledge and belief, and that this organization either owns a working interest or unleased mineral interest in the land including the proposed bottom hole location or has a right to drill this well at this location pursuant to a contract with an owner of such a mineral or working interest, or to a voluntary pooling agreement or a compulsory pooling order heretofore entered by the division.

Sarah Ferreyros 10/20/2023
Signature Date
Sarah Ferreyros
Printed Name
sarah@avantnr.com
E-mail Address

¹⁸ SURVEYOR CERTIFICATION

I hereby certify that the well location shown on this plat was plotted from field notes of actual surveys made by me or under my supervision, and that the same is true and correct to the best of my belief.

2/14/23
Date of Survey
Plat Revised: 10/15/23
Signature and Seal of Professional Surveyor
Joseph Avukoni
14831
Certificate Number

SURFACE LOCATION

NAD 83 NME, NMSPC ZONE 3001
Y= 565242.28 N
X= 758711.23 E
LAT: 32.5519283° N
LONG: 103.6278495° W

KICK OFF POINT

NAD 83 NME, NMSPC ZONE 3001
50' FSL, 792' FEL
SEC. 23, T20S, R33E
Y= 565092.09 N
X= 758692.27 E
LAT: 32.5515158° N
LONG: 103.6279143° W

FIRST TAKE POINT/PPP-1

NAD 83 NME, NMSPC ZONE 3001
100' FSL, 792' FEL
SEC. 23, T20S, R33E
Y= 565142.09 N
X= 758691.93 E
LAT: 32.5516533° N
LONG: 103.6279143° W

LANDING POINT

NAD 83 NME, NMSPC ZONE 3001
535' FSL, 792' FEL
SEC. 23, T20S, R33E
Y= 565577.08 N
X= 758688.91 E
LAT: 32.5528489° N
LONG: 103.6279147° W

CORNER COORDINATES TABLE

NAD 83 NME, NMSPC ZONE 3001
B - Y= 570318.86 N, X= 756801.34 E
C - Y= 570329.03 N, X= 759449.35 E
E - Y= 567674.09 N, X= 759466.41 E
G - Y= 565029.65 N, X= 756839.74 E
H - Y= 565047.41 N, X= 759484.60 E

CORNER COORDINATES TABLE

NAD 83 NME, NMSPC ZONE 3001
B - LAT.=32.5659162° N, LONG.=103.6339394° W
C - LAT.=32.5658960° N, LONG.=103.6253443° W
E - LAT.=32.5585985° N, LONG.=103.6253463° W
G - LAT.=32.5513778° N, LONG.=103.6339276° W
H - LAT.=32.5513786° N, LONG.=103.6253439° W

PPP-2

NAD 83 NME, NMSPC ZONE 3001
1327' FNL, 792' FEL
SEC. 23, T20S, R33E
Y= 568998.68 N
X= 758666.16 E
LAT: 32.5622538° N
LONG: 103.6279150° W

LAST TAKE POINT/
BOTTOM HOLE LOCATION

NAD 83 NME, NMSPC ZONE 3001
Y= 570225.99 N
X= 758658.00 E
LAT: 32.5656272° N
LONG: 103.6279151° W