

**STATE OF NEW MEXICO ENERGY, MINERALS AND NATURAL RESOURCES
DEPARTMENT
OIL CONSERVATION DIVISION**

**APPLICATION OF AVANT OPERATING, LLC
FOR APPROVAL OF NON-STANDARD UNIT
AND COMPULSORY POOLING,
LEA COUNTY, NEW MEXICO.**

CASE NO. 23678

NOTICE OF FILING REVISED C-102S

Pursuant to the Technical Examiner's request, attached for filing in the above captioned case are revised C-102s. The attached C-102s are intended to replace the C-102s previously filed with the hearing exhibits. The C-102s are revised to reflect: Avant Operating, LLC's OGRID number (330396), the pool name (Teas; Bone Spring), the pool code (58960) and the dedicated acreage (640 acres). In addition, the horizontal spacing unit outline in box 16 has been enlarged to reflect the size of the non-standard unit requested in Avant's application. The attached C-102s are marked "Exhibit B-2 (revised)."

Respectfully submitted,

By: /s/ Deana M. Bennett

Deana M. Bennett
Earl E. DeBrine, Jr.
Yarithza Pena
Post Office Box 2168
500 Fourth Street NW, Suite 1000
Albuquerque, New Mexico 87103-2168
Telephone: 505.848.1800
Deana.bennett@modrall.com
Earl.DeBrine@modrall.com
Yarithza.Pena@modrall.com

CERTIFICATE OF SERVICE

I hereby certify that on October 27, 2023, I served a copy of the foregoing document to the following counsel of record via Electronic Mail to:

Michael H. Felderwert
Adam G. Rankin
Julia Broggi
Paula M. Vance
mfeldewert@hollandhart.com
agrarkin@hollandhart.com
jbroggi@hollandhart.com
pmvance@hollandhart.com
Attorneys for XTO Energy

Jordan Kessler
Jordan_Kessler@eogresources.com
Attorney for EOG Resources

By: /s/ Deana M. Bennett

DISTRICT I
1625 N. French Dr., Hobbs, N.M. 88240
Phone: (575) 593-6161 Fax: (575) 593-0720

DISTRICT II
511 S. First St., Artesia, N.M. 88210
Phone: (575) 748-1283 Fax: (575) 748-9720

DISTRICT III
1000 Rio Brazos Rd., Artesia, N.M. 87410
Phone: (505) 334-6176 Fax: (505) 334-6170

DISTRICT IV
1220 S. St. Francis Dr., Santa Fe, N.M. 87506
Phone: (505) 476-3460 Fax: (505) 478-3462

State of New Mexico
Energy, Minerals & Natural Resources Department

Form C-102
Revised August 1, 2011
Submit one copy to appropriate
District Office

OIL CONSERVATION DIVISION
1220 South St. Francis Dr.
Santa Fe, N.M. 87505

AMENDED REPORT

WELL LOCATION AND ACREAGE DEDICATION PLAT

¹ API Number	58960	² Pool Code		³ Pool Name	Teas; Bone Spring
⁴ Property Code		⁵ Property Name	SANDRA JEAN 23 FED COM		⁶ Well Number
⁷ OGRID No.	330396	⁸ Operator Name	AVANT OPERATING, LLC		⁹ Elevation
					3638

¹⁰ Surface Location

UL or lot no.	Section	Township	Range	Lot Idn	Feet from the	North/South line	Feet from the	East/West line	County
P	23	20 S	33 E		360	SOUTH	742	EAST	LEA

¹¹ Bottom Hole Location If Different From Surface

UL or lot no.	Section	Township	Range	Lot Idn	Feet from the	North/South line	Feet from the	East/West line	County
A	23	20 S	33 E		100	NORTH	530	EAST	LEA

¹² Dedicated Acres	SECTION 23: 640 Ac.	¹³ Joint or Infill		¹⁴ Consolidation Code		¹⁵ Order No.	
-------------------------------	---------------------	-------------------------------	--	----------------------------------	--	-------------------------	--

NO ALLOWABLE WILL BE ASSIGNED TO THIS COMPLETION UNTIL ALL INTERESTS HAVE BEEN CONSOLIDATED OR A NON-STANDARD UNIT HAS BEEN APPROVED BY THE DIVISION

16 Legend:

- = SURFACE LOCATION (SHL)
- = LTP/BHL
- △ = FTP/PPP-1
- = KICK OFF POINT (KOP)
- ◇ = LANDING POINT (LP)
- ⊙ = FOUND 1912 USGLD BRASS CAP

17 OPERATOR CERTIFICATION

I hereby certify that the information contained herein is true and complete to the best of my knowledge and belief, and that this organization either owns a working interest or unleased mineral interest in the land including the proposed bottom hole location or has a right to drill this well at this location pursuant to a contract with an owner of such a mineral or working interest, or to a voluntary pooling agreement or a compulsory pooling order heretofore entered by the division.

Signature: *Sarah Ferreyros* Date: 10/20/2023

Printed Name: Sarah Ferreyros
E-mail Address: sarah@avantnr.com

18 SURVEYOR CERTIFICATION

I hereby certify that the well location shown on this plat was plotted from field notes of actual surveys made by me or under my supervision, and that the same is true and correct to the best of my belief.

Date of Survey: 2/14/23
Plat Revised: 10/19/23
Signature and Seal: *[Signature]*

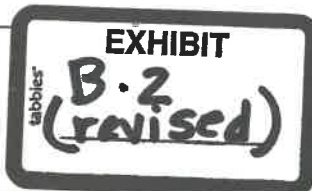
14831

PROFESSIONAL SURVEYOR

Certificate Number: 14931

<p>SURFACE LOCATION NAD 83 NME, NMSPC ZONE 3001 Y= 585402.48 N X= 758740.25 E LAT: 32.5523681° N LONG: 103.6277519° W</p>	<p>KICK OFF POINT NAD 83 NME, NMSPC ZONE 3001 50' FSL, 530' FEL SEC. 23, T20S, R33E Y= 565093.85 N X= 758854.27 E LAT: 32.5515159° N LONG: 103.6270640° W</p>	<p>FIRST TAKE POINT/PPP-1 NAD 83 NME, NMSPC ZONE 3001 100' FSL, 530' FEL SEC. 23, T20S, R33E Y= 565143.85 N X= 758953.92 E LAT: 32.5516533° N LONG: 103.6270640° W</p>
<p>LANDING POINT NAD 83 NME, NMSPC ZONE 3001 535' FSL, 530' FEL SEC. 23, T20S, R33E Y= 565578.84 N X= 758850.91 E LAT: 32.5528490° N LONG: 103.6270645° W</p>		

<p>CORNER COORDINATES TABLE NAD 83 NME, NMSPC ZONE 3001</p> <p>B - Y= 570318.86 N, X= 756801.34 E C - Y= 570329.03 N, X= 759449.35 E E - Y= 567674.09 N, X= 759466.41 E G - Y= 565029.65 N, X= 756839.74 E H - Y= 565047.41 N, X= 759484.60 E</p>	<p>CORNER COORDINATES TABLE NAD 83 NME, NMSPC ZONE 3001</p> <p>B - LAT.=32.5659182° N, LONG.=103.6339394° W C - LAT.=32.5658960° N, LONG.=103.6253443° W E - LAT.=32.5585985° N, LONG.=103.6253463° W G - LAT.=32.5513778° N, LONG.=103.6339278° W H - LAT.=32.5513786° N, LONG.=103.6253439° W</p>	<p>PPP-2 NAD 83 NME, NMSPC ZONE 3001 1327' FNL, 530' FEL SEC. 23, T20S, R33E Y= 568999.63 N X= 758928.16 E LAT: 32.5622516° N LONG: 103.6270646° W</p>
		<p>LAST TAKE POINT/ BOTTOM HOLE LOCATION NAD 83 NME, NMSPC ZONE 3001 Y= 570227.00 N X= 758920.00 E LAT: 32.5656252° N LONG: 103.6270647° W</p>



DISTRICT I
1235 N. French Dr., Hobbs, N.M. 88240
Phone: (575) 393-6161 Fax: (575) 393-0720

DISTRICT II
611 S. First St., Artesia, N.M. 88210
Phone: (575) 748-1883 Fax: (575) 748-9720

DISTRICT III
1000 Rio Brazos Rd., Aztec, N.M. 87410
Phone: (505) 334-6178 Fax: (505) 334-6170

DISTRICT IV
1220 S. St. Francis Dr., Santa Fe, N.M. 87505
Phone: (505) 476-3460 Fax: (505) 476-3462

State of New Mexico
Energy, Minerals & Natural Resources Department

Form C-102
Revised August 1, 2011
Submit one copy to appropriate
District Office

OIL CONSERVATION DIVISION
1220 South St. Francis Dr.
Santa Fe, N.M. 87505

AMENDED REPORT

WELL LOCATION AND ACREAGE DEDICATION PLAT

¹ API Number	² Pool Code 58960	³ Pool Name Teas; Bone Spring
⁴ Property Code	⁵ Property Name SANDRA JEAN 23 FED COM	
⁶ OCRID No. 330396	⁷ Operator Name AVANT OPERATING, LLC	
		⁸ Well Number 302H
		⁹ Elevation 3638

¹⁰ Surface Location

UL or lot no.	Section	Township	Range	Lot Idn	Feet from the	North/South line	Feet from the	East/West line	County
P	23	20 S	33 E		360	SOUTH	802	EAST	LEA

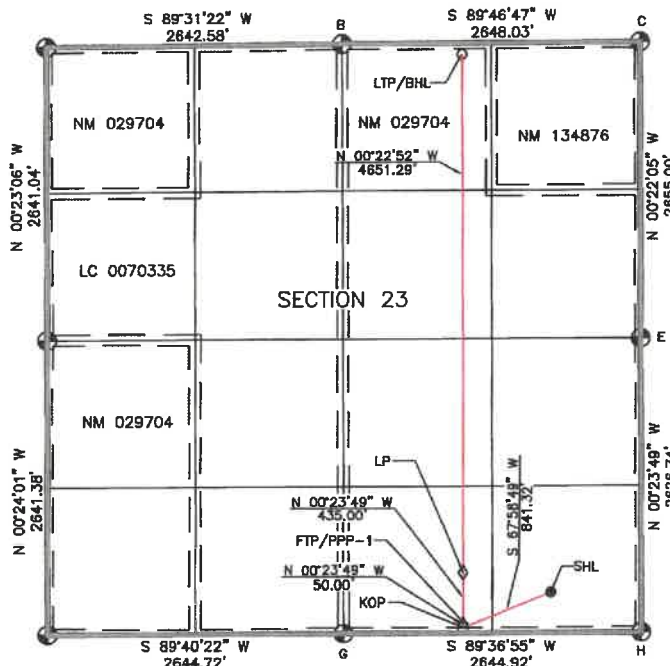
¹¹ Bottom Hole Location If Different From Surface

UL or lot no.	Section	Township	Range	Lot Idn	Feet from the	North/South line	Feet from the	East/West line	County
B	23	20 S	33 E		100	NORTH	1584	EAST	LEA

¹² Dedicated Acres SECTION 23: 640 Ac.	¹³ Joint or Infill	¹⁴ Consolidation Code	¹⁵ Order No.
--	-------------------------------	----------------------------------	-------------------------

NO ALLOWABLE WILL BE ASSIGNED TO THIS COMPLETION UNTIL ALL INTERESTS HAVE BEEN CONSOLIDATED OR A NON-STANDARD UNIT HAS BEEN APPROVED BY THE DIVISION

- 16 Legend:**
- = SURFACE LOCATION (SHL)
 - = LTP/BHL
 - △ = FTP/PPP-1
 - = KICK OFF POINT (KOP)
 - ◇ = LANDING POINT (LP)
 - ⊙ = FOUND 1912 USGLO BRASS CAP



17 OPERATOR CERTIFICATION

I hereby certify that the information contained herein is true and complete to the best of my knowledge and belief, and that this organization either owns a working interest or unleased mineral interest in the land including the proposed bottom hole location or has a right to drill this well at this location pursuant to a contract with an owner of such a mineral or working interest, or to a voluntary pooling agreement or a compulsory pooling order heretofore entered by the division.

Sarah Ferreyros 10/20/2023
Signature Date
Sarah Ferreyros
Printed Name
sarah@avantnr.com
E-mail Address

18 SURVEYOR CERTIFICATION

I hereby certify that the well location shown on this plat was plotted from field notes of actual survey made by me or under my supervision, and that the same is true and correct to the best of my belief.

2/14/23
Date of Survey
Plat Number: 191970
Signature and Seal of Professional Surveyor
Joseph Avukoni
JOSEPH AVUKONI
NEW MEXICO
14831
PROFESSIONAL SURVEYOR
Certificate Number

SURFACE LOCATION
NAD 83 NME, NMSPC ZONE 3001
Y= 565402.20 N
X= 758880.24 E
LAT: 32.5523684° N
LONG: 103.6279467° W

KICK OFF POINT
NAD 83 NME, NMSPC ZONE 3001
50' FSL, 1584' FEL
SEC. 23, T20S, R33E
Y= 565066.77 N
X= 757900.29 E
LAT: 32.5515156° N
LONG: 103.6304846° W

FIRST TAKE POINT/PPP-1
NAD 83 NME, NMSPC ZONE 3001
100' FSL, 1584' FEL
SEC. 23, T20S, R33E
Y= 565136.77 N
X= 757899.94 E
LAT: 32.5516530° N
LONG: 103.6304846° W

LANDING POINT
NAD 83 NME, NMSPC ZONE 3001
535' FSL, 1584' FEL
SEC. 23, T20S, R33E
Y= 565571.76 N
X= 757896.93 E
LAT: 32.5526487° N
LONG: 103.6304851° W

CORNER COORDINATES TABLE
NAD 83 NME, NMSPC ZONE 3001
B - Y= 570318.86 N, X= 756801.34 E
C - Y= 570329.03 N, X= 759449.35 E
G - Y= 567674.08 N, X= 759466.41 E
H - Y= 565029.65 N, X= 756838.74 E
I - Y= 565047.41 N, X= 759484.80 E

CORNER COORDINATES TABLE
NAD 83 NME, NMSPC ZONE 3001
B - LAT.=32.5659162° N, LONG.=103.6339394° W
C - LAT.=32.5658960° N, LONG.=103.6253443° W
E - LAT.=32.5585985° N, LONG.=103.6253463° W
G - LAT.=32.5513778° N, LONG.=103.6339276° W
H - LAT.=32.5513786° N, LONG.=103.6253439° W

LAST TAKE POINT/BOTTOM HOLE LOCATION
NAD 83 NME, NMSPC ZONE 3001
Y= 570222.95 N
X= 757886.00 E
LAT: 32.5656333° N
LONG: 103.6304858° W

DISTRICT I
1825 N. French Dr., Hobbs, N.M. 88240
Phone: (575) 393-6161 Fax: (575) 393-0720

DISTRICT II
811 S. First St., Artesia, N.M. 88210
Phone: (575) 748-1883 Fax: (575) 748-9720

DISTRICT III
1000 Rio Brazos Rd., Aztec, N.M. 87410
Phone: (505) 334-6178 Fax: (505) 334-6170

DISTRICT IV
1220 S. St. Francis Dr., Santa Fe, N.M. 87505
Phone: (505) 476-3480 Fax: (505) 476-3482

State of New Mexico
Energy, Minerals & Natural Resources Department

Form C-102
Revised August 1, 2011
Submit one copy to appropriate
District Office

OIL CONSERVATION DIVISION
1220 South St. Francis Dr.
Santa Fe, N.M. 87505

AMENDED REPORT

WELL LOCATION AND ACREAGE DEDICATION PLAT

¹ API Number	² Pool Code 58960	³ Pool Name Teas; Bone Spring
⁴ Property Code	⁵ Property Name SANDRA JEAN 23 FED COM	
⁶ OGRID No. 330396	⁷ Operator Name AVANT OPERATING, LLC	⁸ Well Number 303H ⁹ Elevation 3631

¹⁰ Surface Location

UL or lot no.	Section	Township	Range	Lot Idn	Feet from the	North/South line	Feet from the	East/West line	County
O	23	20 S	33 E		360	SOUTH	2067	EAST	LEA

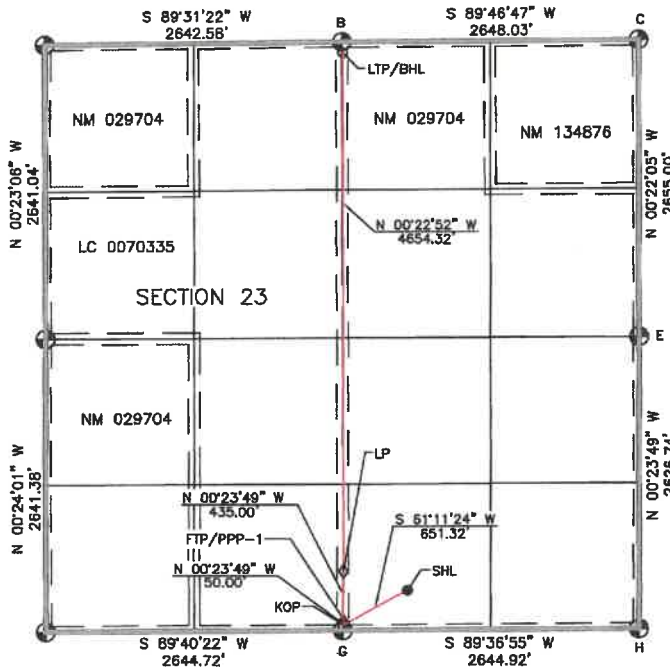
¹¹ Bottom Hole Location If Different From Surface

UL or lot no.	Section	Township	Range	Lot Idn	Feet from the	North/South line	Feet from the	East/West line	County
B	23	20 S	33 E		100	NORTH	2640	EAST	LEA

¹² Dedicated Acres SECTION 23: 640 Ac.	¹³ Joint or Infill	¹⁴ Consolidation Code	¹⁵ Order No.
--	-------------------------------	----------------------------------	-------------------------

NO ALLOWABLE WILL BE ASSIGNED TO THIS COMPLETION UNTIL ALL INTERESTS HAVE BEEN CONSOLIDATED OR A NON-STANDARD UNIT HAS BEEN APPROVED BY THE DIVISION

- 16 Legend:**
- = SURFACE LOCATION (SHL)
 - = LTP/BHL
 - △ = FTP/PPP-1
 - = KICK OFF POINT (KOP)
 - ◇ = LANDING POINT (LP)
 - ⊕ = FOUND 1912 USGLO BRASS CAP



SURFACE LOCATION
NAD 83 NME, NMSPC ZONE 3001
Y = 585393.56 N
X = 757415.01 E
LAT: 32.5523678° N
LONG: 103.6320529° W

KICK OFF POINT
NAD 83 NME, NMSPC ZONE 3001
50' FSL, 2640' FEL
SEC. 23, T20S, R33E
Y = 565079.88 N
X = 758844.31 E
LAT: 32.5515152° N
LONG: 103.6339116° W

FIRST TAKE POINT/PPP-1
NAD 83 NME, NMSPC ZONE 3001
100' FSL, 2640' FEL
SEC. 23, T20S, R33E
Y = 585129.88 N
X = 758843.97 E
LAT: 32.5516527° N
LONG: 103.6339117° W

LANDING POINT
NAD 83 NME, NMSPC ZONE 3001
535' FSL, 2640' FEL
SEC. 23, T20S, R33E
Y = 585584.67 N
X = 758840.96 E
LAT: 32.5528483° N
LONG: 103.6339122° W

CORNER COORDINATES TABLE
NAD 83 NME, NMSPC ZONE 3001

B	Y = 570318.86 N, X = 756801.34 E
C	Y = 570329.03 N, X = 759449.35 E
E	Y = 567874.09 N, X = 759488.41 E
G	Y = 585028.85 N, X = 756839.74 E
H	Y = 585047.41 N, X = 759484.60 E

CORNER COORDINATES TABLE
NAD 83 NME, NMSPC ZONE 3001

B	Y = 585659162° N, LONG = 103.6339394° W
C	Y = 585658960° N, LONG = 103.6253443° W
E	Y = 585658985° N, LONG = 103.6253463° W
G	Y = 5856513778° N, LONG = 103.6339276° W
H	Y = 5856513786° N, LONG = 103.6253439° W

**LAST TAKE POINT/
BOTTOM HOLE LOCATION**
NAD 83 NME, NMSPC ZONE 3001

X	Y = 570218.89 N
Y	X = 756810.01 E
Z	Y = 585658412° N
W	LONG: 103.6339134° W

17 OPERATOR CERTIFICATION

I hereby certify that the information contained herein is true and complete to the best of my knowledge and belief, and that this organization either owns a working interest or unleased mineral interest in the land including the proposed bottom hole location or has a right to drill this well at this location pursuant to a contract with an owner of such a mineral or working interest, or to a voluntary pooling agreement or a compulsory pooling order heretofore entered by the division.

Sarah Ferreyros 10/20/2023
Signature Date
Printed Name
sarah@avantnr.com
E-mail Address

18 SURVEYOR CERTIFICATION

I hereby certify that the well location shown on this plat was plotted from field notes of actual surveys made by me or under my supervision, and that the same to true and correct to the best of my belief.

2/14/23
Date of Survey
Plat Number 14833
Signature and Seal of Professional Surveyor
John A. Vukobratovich
14833
PROFESSIONAL SURVEYOR
Certificate Number

DISTRICT I
1625 N. French Dr., Hobbs, N.M. 88240
Phone: (575) 393-6161 Fax: (575) 393-0720

DISTRICT II
811 S. First St., Artesia, N.M. 88210
Phone: (575) 748-1283 Fax: (575) 748-9720

DISTRICT III
1000 Rio Brazos Rd., Artec, N.M. 87410
Phone: (505) 334-6178 Fax: (505) 334-6170

DISTRICT IV
1220 S. St. Francis Dr., Santa Fe, N.M. 87505
Phone: (505) 476-3460 Fax: (505) 476-3462

State of New Mexico
Energy, Minerals & Natural Resources Department

Form C-102
Revised August 1, 2011
Submit one copy to appropriate
District Office

OIL CONSERVATION DIVISION
1220 South St. Francis Dr.
Santa Fe, N.M. 87505

AMENDED REPORT

WELL LOCATION AND ACREAGE DEDICATION PLAT

1 API Number		2 Pool Code 58960		3 Pool Name Teas; Bone Spring	
4 Property Code		5 Property Name SANDRA JEAN 23 FED COM			6 Well Number 304H
7 OGRD No. 330396		8 Operator Name AVANT OPERATING, LLC			9 Elevation 3621

10 Surface Location

UL or lot no.	Section	Township	Range	Lot Idn	Feet from the	North/South line	Feet from the	East/West line	County
M	23	20 S	33 E		360	SOUTH	1197	WEST	LEA

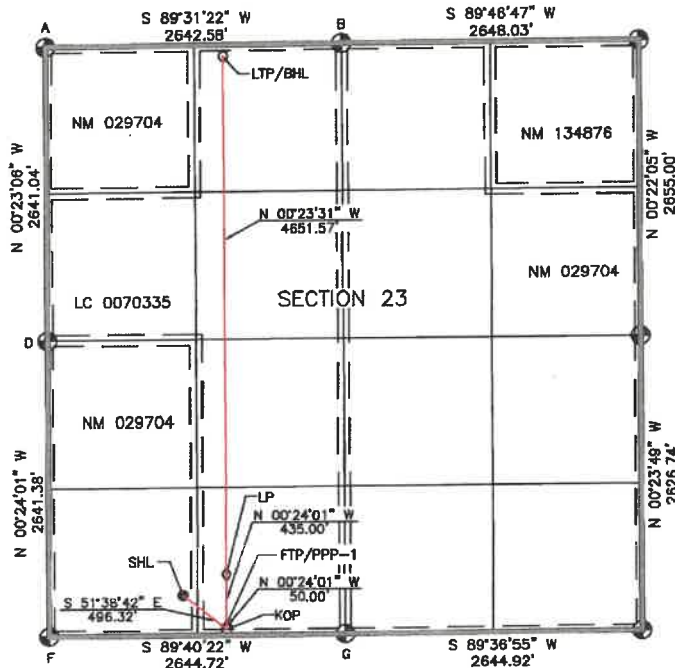
11 Bottom Hole Location If Different From Surface

UL or lot no.	Section	Township	Range	Lot Idn	Feet from the	North/South line	Feet from the	East/West line	County
C	23	20 S	33 E		100	NORTH	1584	WEST	LEA

12 Dedicated Acres SECTION 23: 640 Ac.	13 Joint or Infill	14 Consolidation Code	15 Order No.
---	--------------------	-----------------------	--------------

NO ALLOWABLE WILL BE ASSIGNED TO THIS COMPLETION UNTIL ALL INTERESTS HAVE BEEN CONSOLIDATED OR A NON-STANDARD UNIT HAS BEEN APPROVED BY THE DIVISION

- 16 Legend:
- = SURFACE LOCATION (SHL)
 - = LTP/BHL
 - △ = FTP/PPP-1
 - = KICK OFF POINT (KOP)
 - ◇ = LANDING POINT (LP)
 - ⊙ = FOUND 1912 USGLO BRASS CAP



SURFACE LOCATION
NAD 83 NME, NMSPC ZONE 3001
Y= 565381.49 N
X= 755389.48 E
LAT: 32.5523713° N
LONG: 103.6386226° W

KICK OFF POINT
NAD 83 NME, NMSPC ZONE 3001
50' FSL, 1584' FWL
SEC. 23, T20S, R33E
Y= 565073.59 N
X= 755778.68 E
LAT: 32.5515177° N
LONG: 103.6373700° W

FIRST TAKE POINT/PPP-1
NAD 83 NME, NMSPC ZONE 3001
100' FSL, 1584' FWL
SEC. 23, T20S, R33E
Y= 565123.59 N
X= 755778.33 E
LAT: 32.5516551° N
LONG: 103.6373701° W

LANDING POINT
NAD 83 NME, NMSPC ZONE 3001
535' FSL, 1584' FWL
SEC. 23, T20S, R33E
Y= 565558.58 N
X= 755775.28 E
LAT: 32.5528508° N
LONG: 103.6373707° W

CORNER COORDINATES TABLE
NAD 83 NME, NMSPC ZONE 3001

A	Y= 570298.85 N, X= 754158.86 E
B	Y= 570318.86 N, X= 756801.34 E
D	Y= 567855.87 N, X= 754176.81 E
F	Y= 565014.55 N, X= 754195.06 E
G	Y= 565029.65 N, X= 756838.74 E

CORNER COORDINATES TABLE
NAD 83 NME, NMSPC ZONE 3001

A	LAT.=32.5859031° N, LONG.=103.6425168° W
B	LAT.=32.5859162° N, LONG.=103.6339394° W
D	LAT.=32.5586439° N, LONG.=103.6425148° W
F	LAT.=32.5513837° N, LONG.=103.6425108° W
G	LAT.=32.5513778° N, LONG.=103.6339276° W

**LAST TAKE POINT/
BOTTOM HOLE LOCATION**
NAD 83 NME, NMSPC ZONE 3001

Y= 570210.04 N
X= 755743.48 E
LAT: 32.5656361° N
LONG: 103.6373755° W

17 OPERATOR CERTIFICATION

I hereby certify that the information contained herein is true and complete to the best of my knowledge and belief, and that this organization either owns a working interest or unleased mineral interest in the land including the proposed bottom hole location or has a right to drill this well at this location pursuant to a contract with an owner of such a mineral or working interest, or to a voluntary pooling agreement or a compulsory pooling order heretofore entered by the division.

Sarah Ferreyros 10/20/2023
Signature Date
Printed Name
sarah@avantnr.com
E-mail Address

18 SURVEYOR CERTIFICATION

I hereby certify that the well location shown on this plat was plotted from field notes of actual surveys made by me or under my supervision, and that the same is true and correct to the best of my belief.

2/14/23
Date of Survey
Plat Revised: 10/19/23
Signature and Seal

Certificate Number
14831

DISTRICT I
1625 N. French Dr., Hobbs, N.M. 88240
Phone: (675) 393-6161 Fax: (675) 393-0720

DISTRICT II
811 S. First St., Artesia, N.M. 88210
Phone: (675) 748-1263 Fax: (675) 748-8720

DISTRICT III
1000 Rio Erasos Rd., Antec, N.M. 87410
Phone: (505) 334-6178 Fax: (505) 334-6170

DISTRICT IV
1220 S. St. Francis Dr., Santa Fe, N.M. 87505
Phone: (505) 478-3400 Fax: (505) 478-3462

State of New Mexico
Energy, Minerals & Natural Resources Department

Form C-102

Revised August 1, 2011

OIL CONSERVATION DIVISION
1220 South St. Francis Dr.
Santa Fe, N.M. 87505

Submit one copy to appropriate
District Office

AMENDED REPORT

WELL LOCATION AND ACREAGE DEDICATION PLAT

¹ API Number	² Pool Code 58960	³ Pool Name Teas: Bone Spring
⁴ Property Code	⁵ Property Name SANDRA JEAN 23 FED COM	⁶ Well Number 305H
⁷ OGRID No. 330396	⁸ Operator Name AVANT OPERATING, LLC	⁹ Elevation 3622

¹⁰ Surface Location

UL or lot no.	Section	Township	Range	Lot Idn	Feet from the	North/South line	Feet from the	East/West line	County
M	23	20 S	33 E		360	SOUTH	1137	WEST	LEA

¹¹ Bottom Hole Location If Different From Surface

UL or lot no.	Section	Township	Range	Lot Idn	Feet from the	North/South line	Feet from the	East/West line	County
D	23	20 S	33 E		100	NORTH	530	WEST	LEA

¹² Dedicated Acres SECTION 23: 640 Ac.	¹³ Joint or Infill	¹⁴ Consolidation Code	¹⁵ Order No.
--	-------------------------------	----------------------------------	-------------------------

NO ALLOWABLE WILL BE ASSIGNED TO THIS COMPLETION UNTIL ALL INTERESTS HAVE BEEN CONSOLIDATED OR A NON-STANDARD UNIT HAS BEEN APPROVED BY THE DIVISION

16 Legend:

- = SURFACE LOCATION (SHL)
- = LTP/BHL
- △ = FTP/PPP-1
- = KICK OFF POINT (KOP)
- ◇ = LANDING POINT (LP)
- ⊙ = FOUND 1912 USGLO BRASS CAP

17 OPERATOR CERTIFICATION

I hereby certify that the information contained herein is true and complete to the best of my knowledge and belief, and that this organization either owns a working interest or unleased mineral interest in the land including the proposed bottom hole location or has a right to drill this well at this location pursuant to a contract with an owner of such a mineral or working interest, or to a voluntary pooling agreement or a compulsory pooling order heretofore entered by the division.

Sarah Ferreyros 10/20/2023
Signature Date

Sarah Ferreyros
Printed Name

sarah@avantnr.com
E-mail Address

18 SURVEYOR CERTIFICATION

I hereby certify that the well location shown on this plat was plotted from field notes of actual surveys made by me or under my supervision, and that the same is true and correct to the best of my belief.

2/14/23
Date of Survey

That Surveyed: 14831
Signature and Title of Professional Surveyor

[Signature]
Professional Surveyor

Certificate Number 14831

FIRST TAKE POINT/PPP-1
NAD 83 NME, NMSPC ZONE 3001
100' FSL, 530' FWL
SEC. 23, T20S, R33E
Y= 585117.57 N
X= 754724.36 E
LAT: 32.5518575° N
LONG: 103.6407907° W

LANDING POINT
NAD 83 NME, NMSPC ZONE 3001
535' FSL, 530' FWL
SEC. 23, T20S, R33E
Y= 585522.56 N
X= 754721.31 E
LAT: 32.5528531° N
LONG: 103.6407914° W

PPP-2
NAD 83 NME, NMSPC ZONE 3001
2640' FSL, 530' FWL
SEC. 23, T20S, R33E
Y= 567657.89 N
X= 754706.91 E
LAT: 32.5586394° N
LONG: 103.6407937° W

PPP-3
NAD 83 NME, NMSPC ZONE 3001
1322' FSL, 530' FWL
SEC. 23, T20S, R33E
Y= 588979.48 N
X= 754887.87 E
LAT: 32.5622726° N
LONG: 103.6407951° W

CORNER COORDINATES TABLE
NAD 83 NME, NMSPC ZONE 3001

A - Y= 570296.85 N, X= 754158.86 E
B - Y= 570318.86 N, X= 756801.34 E
D - Y= 567655.87 N, X= 754176.61 E
F - Y= 585014.55 N, X= 754195.06 E
G - Y= 585029.65 N, X= 756839.74 E

CORNER COORDINATES TABLE
NAD 83 NME, NMSPC ZONE 3001

A - LAT.=32.5659031° N, LONG.=103.6425168° W
B - LAT.=32.5659162° N, LONG.=103.6339394° W
D - LAT.=32.5586439° N, LONG.=103.6425148° W
F - LAT.=32.5513837° N, LONG.=103.6425106° W
G - LAT.=32.5513778° N, LONG.=103.6339278° W

**LAST TAKE POINT/
BOTTOM HOLE LOCATION**
NAD 83 NME, NMSPC ZONE 3001
Y= 570201.26 N
X= 754689.51 E
LAT: 32.5856309° N
LONG: 103.6407964° W

DISTRICT I
1826 N. French Dr., Hobbs, N.M. 88240
Phone: (575) 393-8161 Fax: (575) 393-0720

DISTRICT II
611 S. First St., Artesia, N.M. 88210
Phone: (575) 748-1283 Fax: (575) 748-9720

DISTRICT III
1000 Rio Brazos Rd., Asteo, N.M. 87410
Phone: (505) 334-8178 Fax: (505) 334-8170

DISTRICT IV
1220 S. St. Francis Dr., Santa Fe, N.M. 87505
Phone: (505) 478-3460 Fax: (505) 478-3462

State of New Mexico
Energy, Minerals & Natural Resources Department

Form C-102
Revised August 1, 2011
Submit one copy to appropriate
District Office

OIL CONSERVATION DIVISION
1220 South St. Francis Dr.
Santa Fe, N.M. 87505

AMENDED REPORT

WELL LOCATION AND ACREAGE DEDICATION PLAT

¹ API Number	² Pool Code	³ Pool Name
	58960	Teas; Bone Spring
⁴ Property Code	⁵ Property Name	⁶ Well Number
	SANDRA JEAN 23 FED COM	501H
⁷ OCRD No.	⁸ Operator Name	⁹ Elevation
330396	AVANT OPERATING, LLC	3640

¹⁰ Surface Location

UL or lot no.	Section	Township	Range	Lot Idn	Feet from the	North/South line	Feet from the	East/West line	County
P	23	20 S	33 E		200	SOUTH	732	EAST	LEA

¹¹ Bottom Hole Location If Different From Surface

UL or lot no.	Section	Township	Range	Lot Idn	Feet from the	North/South line	Feet from the	East/West line	County
A	23	20 S	33 E		100	NORTH	330	EAST	LEA

¹² Dedicated Acres	¹³ Joint or Infill	¹⁴ Consolidation Code	¹⁵ Order No.
SECTION 23: 640 Ac.			

NO ALLOWABLE WILL BE ASSIGNED TO THIS COMPLETION UNTIL ALL INTERESTS HAVE BEEN CONSOLIDATED OR A NON-STANDARD UNIT HAS BEEN APPROVED BY THE DIVISION

16 Legend:

- = SURFACE LOCATION (SHL)
- = LTP/BHL
- △ = FTP/PPP-1
- = KICK OFF POINT (KOP)
- ◇ = LANDING POINT (LP)
- ⊙ = FOUND 1912 USGLO BRASS CAP

17 OPERATOR CERTIFICATION

I hereby certify that the information contained herein is true and complete to the best of my knowledge and belief, and that this organization either owns a working interest or unleased mineral interest in the land including the proposed bottom hole location or has a right to drill this well at this location pursuant to a contract with an owner of such a mineral or working interest, or to a voluntary pooling agreement or a compulsory pooling order heretofore entered by the division.

Signature: *Sarah Ferreyros* Date: 10/20/2023

Printed Name: Sarah Ferreyros
E-mail Address: sarah@avantnr.com

18 SURVEYOR CERTIFICATION

I hereby certify that the well location shown on this plat was plotted from field notes of actual surveys made by me or under my supervision, and that the same is true and correct to the best of my belief.

Date of Survey: 2/14/23
Plat Revised: 10/20/23

Signature and Seal of Expanding Surveyor:
JOY A. VUKONICH
NEW MEXICO
14881
PROFESSIONAL SURVEYOR
14031

Certificate Number:

<p>SURFACE LOCATION NAD 83 NME, NMSPC ZONE 3001 Y= 565242.46 N X= 758751.21 E LAT: 32.5519280° N LONG: 103.6277198° W</p>	<p>KICK OFF POINT NAD 83 NME, NMSPC ZONE 3001 50° FSL, 330° FEL SEC. 23, T20S, R33E Y= 585095.19 N X= 759154.26 E LAT: 32.5515159° N LONG: 103.6264149° W</p>	<p>FIRST TAKE POINT/PPP-1 NAD 83 NME, NMSPC ZONE 3001 100° FSL, 330° FEL SEC. 23, T20S, R33E Y= 565148.19 N X= 759153.92 E LAT: 32.5518534° N LONG: 103.6264150° W</p>	<p>LANDING POINT NAD 83 NME, NMSPC ZONE 3001 535° FSL, 330° FEL SEC. 23, T20S, R33E Y= 56580.18 N X= 759150.90 E LAT: 32.5528490° N LONG: 103.6264154° W</p>
--	--	---	---

<p>CORNER COORDINATES TABLE NAD 83 NME, NMSPC ZONE 3001</p> <p>B - Y= 570318.86 N, X= 756801.34 E C - Y= 570329.03 N, X= 759449.35 E E - Y= 567874.09 N, X= 759486.41 E G - Y= 565029.85 N, X= 756839.74 E H - Y= 565047.41 N, X= 759484.60 E</p>	<p>CORNER COORDINATES TABLE NAD 83 NME, NMSPC ZONE 3001</p> <p>B - LAT.=32.5659162° N, LONG.=103.6339394° W C - LAT.=32.5658960° N, LONG.=103.6253443° W E - LAT.=32.5658985° N, LONG.=103.6253463° W G - LAT.=32.5513778° N, LONG.=103.6339276° W H - LAT.=32.5513788° N, LONG.=103.6253439° W</p>	<p>PPP-2 NAD 83 NME, NMSPC ZONE 3001 1327' FNL, 330° FEL SEC. 23, T20S, R33E Y= 569000.36 N X= 759128.18 E LAT: 32.5622500° N LONG: 103.6264155° W</p>	<p>LAST TAKE POINT/ BOTTOM HOLE LOCATION NAD 83 NME, NMSPC ZONE 3001 Y= 570227.77 N X= 759120.00 E LAT: 32.5658237° N LONG: 103.6264155° W</p>
--	--	---	---

DISTRICT I
1625 N. French Dr., Hobbs, N.M. 88240
Phone: (575) 393-8181 Fax: (575) 393-0720

DISTRICT II
811 S. First St., Artesia, N.M. 88210
Phone: (575) 748-1288 Fax: (575) 748-9720

DISTRICT III
1000 Rio Brazos Rd., Aztec, N.M. 87410
Phone: (505) 334-6178 Fax: (505) 334-6170

DISTRICT IV
1220 S. St. Francis Dr., Santa Fe, N.M. 87506
Phone: (505) 478-3480 Fax: (505) 478-3482

State of New Mexico
Energy, Minerals & Natural Resources Department

Form C-102

Revised August 1, 2011

OIL CONSERVATION DIVISION
1220 South St. Francis Dr.
Santa Fe, N.M. 87505

Submit one copy to appropriate
District Office

AMENDED REPORT

WELL LOCATION AND ACREAGE DEDICATION PLAT

¹ API Number	² Pool Code 58960	³ Pool Name Teas: Bone Spring
⁴ Property Code	⁵ Property Name SANDRA JEAN 23 FED COM	⁶ Well Number 502H
⁷ OGHD No. 330396	⁸ Operator Name AVANT OPERATING, LLC	⁹ Elevation 3639

¹⁰ Surface Location

UL or lot no.	Section	Township	Range	Lot Idn	Feet from the	North/South line	Feet from the	East/West line	County
P	23	20 S	33 E		200	SOUTH	792	EAST	LEA

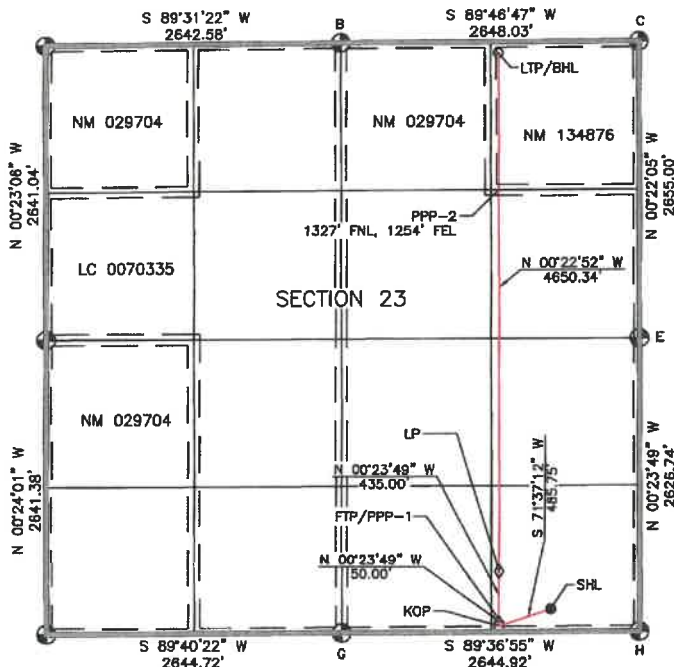
¹¹ Bottom Hole Location If Different From Surface

UL or lot no.	Section	Township	Range	Lot Idn	Feet from the	North/South line	Feet from the	East/West line	County
A	23	20 S	33 E		100	NORTH	1254	EAST	LEA

¹² Dedicated Acres SECTION 23: 640 Ac.	¹³ Joint or Infill	¹⁴ Consolidation Code	¹⁵ Order No.
--	-------------------------------	----------------------------------	-------------------------

NO ALLOWABLE WILL BE ASSIGNED TO THIS COMPLETION UNTIL ALL INTERESTS HAVE BEEN CONSOLIDATED OR A NON-STANDARD UNIT HAS BEEN APPROVED BY THE DIVISION

- ¹⁶ Legend:
- = SURFACE LOCATION (SHL)
 - = LTP/BHL
 - △ = FTP/PPP-1
 - = KICK OFF POINT (KOP)
 - ◇ = LANDING POINT (LP)
 - ⊙ = FOUND 1912 USGLO BRASS CAP



SURFACE LOCATION
NAD 83 NME, NMSPC ZONE 3001
Y= 565242.15 N
X= 759891.25 E
LAT: 32.5519283° N
LONG: 103.6279144° W

KICK OFF POINT
NAD 83 NME, NMSPC ZONE 3001
50' FSL, 1254' FEL
SEC. 23, T20S, R33E
Y= 565088.99 N
X= 75823028 E
LAT: 32.5515157° N
LONG: 103.6294138° W

FIRST TAKE POINT/PPP-1
NAD 83 NME, NMSPC ZONE 3001
100' FSL, 1254' FEL
SEC. 23, T20S, R33E
Y= 565138.99 N
X= 758229.94 E
LAT: 32.5516531° N
LONG: 103.6294137° W

LANDING POINT
NAD 83 NME, NMSPC ZONE 3001
535' FSL, 1254' FEL
SEC. 23, T20S, R33E
Y= 565573.98 N
X= 758229.92 E
LAT: 32.5528488° N
LONG: 103.6294141° W

CORNER COORDINATES TABLE
NAD 83 NME, NMSPC ZONE 3001

B - Y= 570318.86 N, X= 756801.34 E
C - Y= 570329.03 N, X= 758448.35 E
E - Y= 567874.09 N, X= 758468.41 E
G - Y= 565029.65 N, X= 756839.74 E
H - Y= 565047.41 N, X= 759484.80 E

CORNER COORDINATES TABLE
NAD 83 NME, NMSPC ZONE 3001

B - LAT.=32.5659162° N, LONG.=103.6339394° W
C - LAT.=32.5658960° N, LONG.=103.6253443° W
E - LAT.=32.5658985° N, LONG.=103.6253443° W
G - LAT.=32.5513778° N, LONG.=103.6339278° W
H - LAT.=32.5513786° N, LONG.=103.6253438° W

PPP-2
NAD 83 NME, NMSPC ZONE 3001
1327' FNL, 1254' FEL
SEC. 23, T20S, R33E
Y= 568998.99 N
X= 758204.16 E
LAT: 32.5622575° N
LONG: 103.6294145° W

**LAST TAKE POINT/
BOTTOM HOLE LOCATION**
NAD 83 NME, NMSPC ZONE 3001
Y= 570224.22 N
X= 758196.00 E
LAT: 32.5656308° N
LONG: 103.6294147° W

¹⁷ OPERATOR CERTIFICATION

I hereby certify that the information contained herein is true and complete to the best of my knowledge and belief, and that this organization either owns a working interest or undivided mineral interest in the land including the proposed bottom hole location or has a right to drill this well at this location pursuant to a contract with an owner of such a mineral or working interest, or to a voluntary pooling agreement or a compulsory pooling order heretofore entered by the division.

Signature: *Sarah Ferreyros* Date: 10/20/2023
Printed Name: Sarah Ferreyros
E-mail Address: sarah@avantnr.com

¹⁸ SURVEYOR CERTIFICATION

I hereby certify that the well location shown on this plat was plotted from field notes of actual surveys made by me or under my supervision, and that the same is true and correct to the best of my belief.

2/14/23

Date of Survey
Plat Revised: 10/19/23
Signature and Seal of Professional Surveyor:



Certificate Number: 14831

DISTRICT I
1626 N. French Dr., Hobbs, N.M. 88240
Phone: (575) 393-6161 Fax: (575) 393-0720

DISTRICT II
811 S. First St., Artesia, N.M. 88210
Phone: (575) 748-1883 Fax: (575) 748-9720

DISTRICT III
1000 Rio Erasos Rd., Artec, N.M. 87410
Phone: (505) 334-6178 Fax: (505) 334-6170

DISTRICT IV
1220 S. St. Francis Dr., Santa Fe, N.M. 87506
Phone: (505) 476-3460 Fax: (505) 476-3462

State of New Mexico
Energy, Minerals & Natural Resources Department

Form C-102
Revised August 1, 2011
Submit one copy to appropriate
District Office

OIL CONSERVATION DIVISION
1220 South St. Francis Dr.
Santa Fe, N.M. 87505

AMENDED REPORT

WELL LOCATION AND ACREAGE DEDICATION PLAT

1 AFI Number		2 Pool Code		3 Pool Name	
		58960		Teas: Bone Spring	
4 Property Code		5 Property Name			6 Well Number
		SANDRA JEAN 23 FED COM			503H
7 OGRID No.		8 Operator Name			9 Elevation
330396		AVANT OPERATING, LLC			3632

10 Surface Location

UL or lot no.	Section	Township	Range	Lot Idn	Feet from the	North/South line	Feet from the	East/West line	County
O	23	20 S	33 E		200	SOUTH	2077	EAST	LEA

11 Bottom Hole Location If Different From Surface

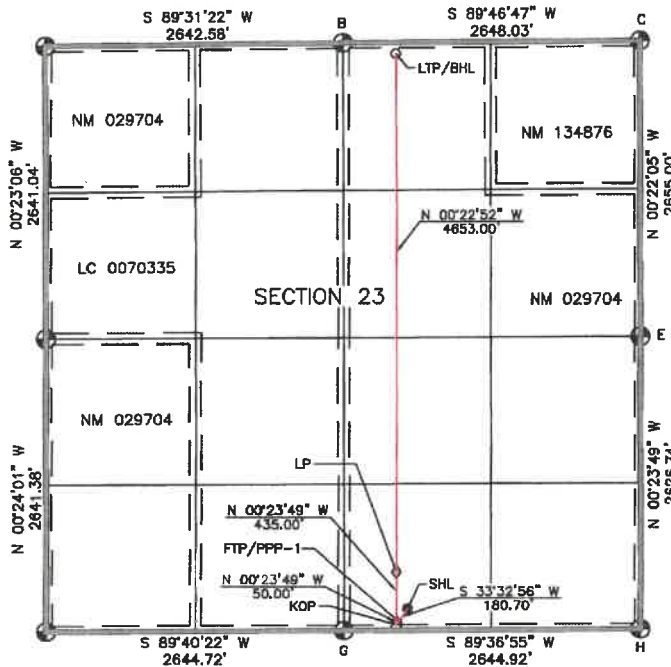
UL or lot no.	Section	Township	Range	Lot Idn	Feet from the	North/South line	Feet from the	East/West line	County
B	23	20 S	33 E		100	NORTH	2178	EAST	LEA

12 Dedicated Acres				13 Joint or Infill		14 Consolidation Code		15 Order No.	
SECTION 23: 640 Ac.									

NO ALLOWABLE WILL BE ASSIGNED TO THIS COMPLETION UNTIL ALL INTERESTS HAVE BEEN CONSOLIDATED OR A NON-STANDARD UNIT HAS BEEN APPROVED BY THE DIVISION

16 Legend:

- = SURFACE LOCATION (SHL)
- = LTP/BHL
- △ = FTP/PPP-1
- = KICK OFF POINT (KOP)
- ◇ = LANDING POINT (LP)
- ⊙ = FOUND 1912 USGLO BRASS CAP



SURFACE LOCATION
NAD 83 NME, NMSPC ZONE 3001
Y= 585233.38 N
X= 757406.17 E
LAT: 32.5518275° N
LONG: 103.6320850° W

KICK OFF POINT
NAD 83 NME, NMSPC ZONE 3001
50' FSL, 2178' FEL
SEC. 23, T20S, R33E
Y= 565082.79 N
X= 757306.30 E
LAT: 32.5515154° N
LONG: 103.6324123° W

FIRST TAKE POINT/PPP-1
NAD 83 NME, NMSPC ZONE 3001
100' FSL, 2178' FEL
SEC. 23, T20S, R33E
Y= 565132.79 N
X= 757305.96 E
LAT: 32.5516528° N
LONG: 103.6324124° W

LANDING POINT
NAD 83 NME, NMSPC ZONE 3001
535' FSL, 2178' FEL
SEC. 23, T20S, R33E
Y= 565567.77 N
X= 757302.94 E
LAT: 32.5528485° N
LONG: 103.6324126° W

CORNER COORDINATES TABLE
NAD 83 NME, NMSPC ZONE 3001

B	- Y= 570318.86 N, X= 756801.34 E
Y	- Y= 570328.03 N, X= 759449.35 E
C	- Y= 567874.09 N, X= 759468.41 E
G	- Y= 565029.85 N, X= 756839.74 E
H	- Y= 565047.41 N, X= 759484.60 E

CORNER COORDINATES TABLE
NAD 83 NME, NMSPC ZONE 3001

B	- LAT.=32.5659162° N, LONG.=103.6339394° W
C	- LAT.=32.5658960° N, LONG.=103.6253443° W
E	- LAT.=32.5685985° N, LONG.=103.6253463° W
G	- LAT.=32.5513778° N, LONG.=103.6339276° W
H	- LAT.=32.5513788° N, LONG.=103.6253439° W

**LAST TAKE POINT/
BOTTOM HOLE LOCATION**
NAD 83 NME, NMSPC ZONE 3001
Y= 570220.67 N
X= 757272.00 E
LAT: 32.5656378° N
LONG: 103.6324138° W

17 OPERATOR CERTIFICATION

I hereby certify that the information contained herein is true and complete to the best of my knowledge and belief, and that this organization either owns a working interest or unleased mineral interest in the land including the proposed bottom hole location or has a right to drill this well at this location pursuant to a contract with an owner of such a mineral or working interest, or to a voluntary pooling agreement or a compulsory pooling order heretofore entered by the division.

Sarah Ferreyros 10/20/2023
Signature Date
Printed Name
sarah@avantnr.com
E-mail Address

18 SURVEYOR CERTIFICATION

I hereby certify that the well location shown on this plat was plotted from field notes of actual surveys made by me or under my supervision, and that the same is true and correct to the best of my belief.

2/14/23

Date of Survey
Plat Revised: 10/20/2023
Signature and Seal of Professional Surveyor



14831
Certificate Number

DISTRICT I
1625 N. French Dr., Hobbs, N.M. 88240
Phone: (575) 393-6161 Fax: (575) 393-0720

DISTRICT II
611 S. First St., Artesia, N.M. 88210
Phone: (575) 748-1283 Fax: (575) 748-0720

DISTRICT III
1000 Rio Arriba Rd., Aztec, N.M. 87410
Phone: (505) 334-6176 Fax: (505) 334-6170

DISTRICT IV
1220 S. St. Francis Dr., Santa Fe, N.M. 87605
Phone: (505) 476-3460 Fax: (505) 476-3482

State of New Mexico
Energy, Minerals & Natural Resources Department

Form C-102

Revised August 1, 2011

Submit one copy to appropriate
District Office

OIL CONSERVATION DIVISION
1220 South St. Francis Dr.
Santa Fe, N.M. 87505

AMENDED REPORT

WELL LOCATION AND ACREAGE DEDICATION PLAT

¹ API Number	² Pool Code 58960	³ Pool Name Teas; Bone Spring
⁴ Property Code	⁵ Property Name SANDRA JEAN 23 FED COM	⁶ Well Number 504H
⁷ OGRI No. 330396	⁸ Operator Name AVANT OPERATING, LLC	⁹ Elevation 3624

¹⁰ Surface Location

UL or lot no.	Section	Township	Range	Lot Idn	Feet from the	North/South line	Feet from the	East/West line	County
N	23	20 S	33 E		200	SOUTH	184.8	WEST	LEA

¹¹ Bottom Hole Location If Different From Surface

UL or lot no.	Section	Township	Range	Lot Idn	Feet from the	North/South line	Feet from the	East/West line	County
C	23	20 S	33 E		100	NORTH	217.8	WEST	LEA

¹² Dedicated Acres SECTION 23: 640 Ac.	¹³ Joint or Infill	¹⁴ Consolidation Code	¹⁵ Order No.
--	-------------------------------	----------------------------------	-------------------------

NO ALLOWABLE WILL BE ASSIGNED TO THIS COMPLETION UNTIL ALL INTERESTS HAVE BEEN CONSOLIDATED OR A NON-STANDARD UNIT HAS BEEN APPROVED BY THE DIVISION

16 Legend:

- = SURFACE LOCATION (SHL)
- = LTP/BHL
- △ = FTP/PPP-1
- = KICK OFF POINT (KOP)
- ◇ = LANDING POINT (LP)
- ⊙ = FOUND 1812 USGLO BRASS CAP

17 OPERATOR CERTIFICATION

I hereby certify that the information contained herein is true and complete to the best of my knowledge and belief, and that this organization either owns a working interest or unleased mineral interest in the land including the proposed bottom hole location or has a right to drill this well at this location pursuant to a contract with an owner of such a mineral or working interest, or to a voluntary pooling agreement or a compulsory pooling order heretofore entered by the division.

Sarah Ferreyros 10/20/2023
Signature Date

Sarah Ferreyros
Printed Name

sarah@avantnr.com
E-mail Address

18 SURVEYOR CERTIFICATION

I hereby certify that the well location shown on this plat was plotted from field notes of actual surveys made by me or under my supervision, and that the same is true and correct to the best of my belief.

2/14/23
Date of Survey

10/16/23
Plat Revised: 10/16/23

John A Vukovich
Signature and Seal of Professional Surveyor

14831
Certificate Number

14831

SURFACE LOCATION
NAD 83 NME, NMSPC ZONE 3001
Y= 585225.13 N
X= 756041.70 E
LAT: 32.5519295° N
LONG: 103.6356132° W

KICK OFF POINT
NAD 83 NME, NMSPC ZONE 3001
50' FSL, 2178' FWL
SEC. 23, T20S, R33E
Y= 585076.98 N
X= 756372.67 E
LAT: 32.5515163° N
LONG: 103.6354423° W

FIRST TAKE POINT/PPP-1
NAD 83 NME, NMSPC ZONE 3001
100' FSL, 2178' FWL
SEC. 23, T20S, R33E
Y= 585126.98 N
X= 756372.32 E
LAT: 32.5516537° N
LONG: 103.6354424° W

LANDING POINT
NAD 83 NME, NMSPC ZONE 3001
535' FSL, 2178' FWL
SEC. 23, T20S, R33E
Y= 585561.97 N
X= 756369.28 E
LAT: 32.5528494° N
LONG: 103.6354430° W

CORNER COORDINATES TABLE
NAD 83 NME, NMSPC ZONE 3001

A - Y= 570286.85 N, X= 754158.86 E
B - Y= 570318.86 N, X= 756801.34 E
D - Y= 567855.87 N, X= 754176.61 E
F - Y= 565014.55 N, X= 754195.06 E
G - Y= 565029.85 N, X= 756839.74 E

CORNER COORDINATES TABLE
NAD 83 NME, NMSPC ZONE 3001

A - LAT.=32.5659031° N, LONG.=103.6425168° W
B - LAT.=32.5659162° N, LONG.=103.6339394° W
D - LAT.=32.5586438° N, LONG.=103.6425148° W
F - LAT.=32.5513837° N, LONG.=103.6425106° W
G - LAT.=32.5513778° N, LONG.=103.6339276° W

**LAST TAKE POINT/
BOTTOM HOLE LOCATION**
NAD 83 NME, NMSPC ZONE 3001
Y= 570214.99 N
X= 756337.46 E
LAT: 32.5586391° N
LONG: 103.6354473° W

DISTRICT I
1625 N. French Dr., Hobbs, N.M. 88240
Phone: (575) 393-6161 Fax: (575) 393-0720

DISTRICT II
611 S. First St., Artesia, N.M. 88210
Phone: (575) 748-1283 Fax: (575) 748-8720

DISTRICT III
1040 Rio Brazos Rd., Artec, N.M. 87410
Phone: (505) 334-6178 Fax: (505) 334-6170

DISTRICT IV
1220 S. St. Francis Dr., Santa Fe, N.M. 87505
Phone: (505) 478-3460 Fax: (505) 478-3462

State of New Mexico
Energy, Minerals & Natural Resources Department

Form C-102

Revised August 1, 2011

OIL CONSERVATION DIVISION
1220 South St. Francis Dr.
Santa Fe, N.M. 87505

Submit one copy to appropriate
District Office

AMENDED REPORT

WELL LOCATION AND ACREAGE DEDICATION PLAT

¹ AFT Number	² Pool Code	³ Pool Name
	58960	Teas; Bone Spring
⁴ Property Code	⁵ Property Name	⁶ Well Number
	SANDRA JEAN 23 FED COM	505H
⁷ GRID No.	⁸ Operator Name	⁹ Elevation
330396	AVANT OPERATING, LLC	3624

¹⁰ Surface Location

UL or lot no.	Section	Township	Range	Lot Idn	Feet from the	North/South line	Feet from the	East/West line	County
N	23	20 S	33 E		200	SOUTH	1788	WEST	LEA

¹¹ Bottom Hole Location if Different From Surface

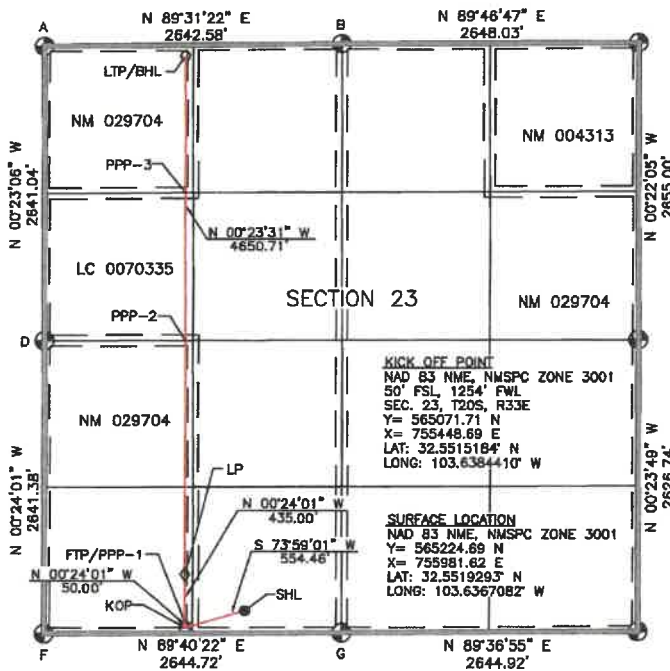
UL or lot no.	Section	Township	Range	Lot Idn	Feet from the	North/South line	Feet from the	East/West line	County
D	23	20 S	33 E		100	NORTH	1254	WEST	LEA

¹² Dedicated Acres	¹³ Joint or Infill	¹⁴ Consolidation Code	¹⁵ Order No.
SECTION 23: 640 Ac.			

NO ALLOWABLE WILL BE ASSIGNED TO THIS COMPLETION UNTIL ALL INTERESTS HAVE BEEN CONSOLIDATED OR A NON-STANDARD UNIT HAS BEEN APPROVED BY THE DIVISION

¹⁶ Legend:

- = SURFACE LOCATION (SHL)
- = LTP/BHL
- △ = FTP/PPP-1
- = KICK OFF POINT (KOP)
- ◇ = LANDING POINT (LP)
- ⊙ = FOUND 1912 USGLD BRASS CAP



FIRST TAKE POINT/PPP-1
NAD 83 NME, NMSPC ZONE 3001
100' FSL, 1254' FWL
SEC. 23, T20S, R33E
Y= 565121.71 N
X= 755448.34 E
LAT: 32.5516559° N
LONG: 103.6384411° W

LANDING POINT
NAD 83 NME, NMSPC ZONE 3001
535' FSL, 1254' FWL
SEC. 23, T20S, R33E
Y= 565556.70 N
X= 755445.30 E
LAT: 32.5528515° N
LONG: 103.6384417° W

PPP-2
NAD 83 NME, NMSPC ZONE 3001
2639' FSL, 1254' FWL
SEC. 23, T20S, R33E
Y= 567680.19 N
X= 755430.91 E
LAT: 32.5586333° N
LONG: 103.6384439° W

PPP-3
NAD 83 NME, NMSPC ZONE 3001
1324' FSL, 1254' FWL
SEC. 23, T20S, R33E
Y= 568983.74 N
X= 755421.86 E
LAT: 32.5622714° N
LONG: 103.6384452° W

CORNER COORDINATES TABLE
NAD 83 NME, NMSPC ZONE 3001

A - Y= 570296.85 N, X= 754158.86 E
B - Y= 570318.86 N, X= 756801.34 E
D - Y= 567655.87 N, X= 754176.61 E
F - Y= 565014.55 N, X= 754185.08 E
G - Y= 565029.65 N, X= 758639.74 E

CORNER COORDINATES TABLE
NAD 83 NME, NMSPC ZONE 3001

A - LAT.=32.5659031° N, LONG.=103.6425168° W
B - LAT.=32.5659162° N, LONG.=103.639394° W
D - LAT.=32.5588439° N, LONG.=103.6425146° W
F - LAT.=32.5513837° N, LONG.=103.6425105° W
G - LAT.=32.5513778° N, LONG.=103.6392276° W

**LAST TAKE POINT/
BOTTOM HOLE LOCATION**
NAD 83 NME, NMSPC ZONE 3001

Y= 570207.29 N
X= 755413.49 E
LAT: 32.5656345° N
LONG: 103.6384464° W

¹⁷ OPERATOR CERTIFICATION

I hereby certify that the information contained herein is true and complete to the best of my knowledge and belief, and that this organization either owns a working interest or unleased mineral interest in the land including the proposed bottom hole location or has a right to drill this well at this location pursuant to a contract with an owner of such a mineral or working interest, or to a voluntary pooling agreement or a compulsory pooling order heretofore entered by the division.

Sarah Ferreyros 10/20/2023
Signature Date
Printed Name Sarah Ferreyros
E-mail Address sarah@avantnr.com

¹⁸ SURVEYOR CERTIFICATION

I hereby certify that the well location shown on this plat was plotted from field notes of actual surveys made by me or under my supervision, and that the same is true and correct to the best of my belief.

2/14/23
Date of Survey
Plat Revised: 10/20/23
Signature and Seal of Registered Surveyor:
John Vukobratovic
14831
PROFESSIONAL SURVEYOR
Certificate Number

DISTRICT I
1625 N. French Dr., Hobbs, N.M. 88240
Phone: (505) 393-6161 Fax: (505) 393-0720

DISTRICT II
811 S. First St., Artesia, N.M. 88210
Phone: (505) 748-1293 Fax: (505) 748-9730

DISTRICT III
1000 Rio Brazos Rd., Artec, N.M. 87410
Phone: (505) 334-8178 Fax: (505) 334-8170

DISTRICT IV
1220 S. St. Francis Dr., Santa Fe, N.M. 87505
Phone: (505) 476-3480 Fax: (505) 476-3482

State of New Mexico
Energy, Minerals & Natural Resources Department

Form C-102
Revised August 1, 2011

OIL CONSERVATION DIVISION
1220 South St. Francis Dr.
Santa Fe, N.M. 87505

Submit one copy to appropriate
District Office

AMENDED REPORT

WELL LOCATION AND ACREAGE DEDICATION PLAT

¹ API Number	² Pool Code 58960	³ Pool Name Teas; Bone Spring
⁴ Property Code	⁵ Property Name SANDRA JEAN 23 FED COM	⁶ Well Number 506H
⁷ DGRD No. 330396	⁸ Operator Name AVANT OPERATING, LLC	⁹ Elevation 3622

¹⁰ Surface Location

UL or lot no.	Section	Township	Range	Lot Idn	Feet from the	North/South line	Feet from the	East/West line	County
M	23	20 S	33 E		200	SOUTH	1147	WEST	LEA

¹¹ Bottom Hole Location If Different From Surface

UL or lot no.	Section	Township	Range	Lot Idn	Feet from the	North/South line	Feet from the	East/West line	County
D	23	20 S	33 E		100	NORTH	330	WEST	LEA

¹² Dedicated Acres SECTION 23: 640 Ac.	¹³ Joint or Infill	¹⁴ Consolidation Code	¹⁵ Order No.
--	-------------------------------	----------------------------------	-------------------------

NO ALLOWABLE WILL BE ASSIGNED TO THIS COMPLETION UNTIL ALL INTERESTS HAVE BEEN CONSOLIDATED OR A NON-STANDARD UNIT HAS BEEN APPROVED BY THE DIVISION

16 Legend:

- = SURFACE LOCATION (SHL)
- = LTP/BHL
- △ = FTP/PPP-1
- = KICK OFF POINT (KOP)
- ◇ = LANDING POINT (LP)
- ⊙ = FOUND 1912 USGLO BRASS CAP

17 OPERATOR CERTIFICATION

I hereby certify that the information contained herein is true and complete to the best of my knowledge and belief, and that this organization either owns a working interest or unleased mineral interest in the land including the proposed bottom hole location or has a right to drill this well at this location pursuant to a contract with an owner of such a mineral or working interest, or to a voluntary pooling agreement or a compulsory pooling order heretofore entered by the division.

Signature: *Sarah Ferreyros* Date: 10/20/2023

Printed Name: Sarah Ferreyros

E-mail Address: sarah@avantnr.com

18 SURVEYOR CERTIFICATION

I hereby certify that the well location shown on this plat was plotted from field notes of actual surveys made by me or under my supervision, and that the same is true and correct to the best of my belief.

Date of Survey: 2/14/23
Flat Revised: 10/17/2023
Signature and Seal of Professional Surveyor: *John A. Vukovich*

Professional Surveyor Seal: JOHN A. VUKOVICH, NEW MEXICO, 14831, PROFESSIONAL SURVEYOR

Certificate Number: 14831

FIRST TAKE POINT/PPP-1
NAD 83 NME, NMSPC ZONE 3001
100' FSL, 330' FWL
SEC. 23, T20S, R33E
Y= 565116.43 N
X= 754524.35 E
LAT: 32.5516579° N
LONG: 103.6414398° W

LANDING POINT
NAD 83 NME, NMSPC ZONE 3001
536' FSL, 330' FWL
SEC. 23, T20S, R33E
Y= 568551.42 N
X= 754521.31 E
LAT: 32.5528535° N
LONG: 103.6414405° W

PPP-2
NAD 83 NME, NMSPC ZONE 3001
2641' FSL, 330' FWL
SEC. 23, T20S, R33E
Y= 567657.00 N
X= 754508.91 E
LAT: 32.5586411° N
LONG: 103.6414428° W

PPP-3
NAD 83 NME, NMSPC ZONE 3001
1322' FSL, 330' FWL
SEC. 23, T20S, R33E
Y= 568978.30 N
X= 754497.87 E
LAT: 32.5622728° N
LONG: 103.6414443° W

CORNER COORDINATES TABLE
NAD 83 NME, NMSPC ZONE 3001

A - Y= 570296.85 N, X= 754158.86 E
B - Y= 570318.86 N, X= 756801.34 E
D - Y= 567555.87 N, X= 754176.61 E
F - Y= 585014.55 N, X= 754195.06 E
G - Y= 565029.85 N, X= 756839.74 E

CORNER COORDINATES TABLE
NAD 83 NME, NMSPC ZONE 3001

A - LAT.=32.5659031° N, LONG.=103.6425168° W
B - LAT.=32.5659162° N, LONG.=103.6339394° W
D - LAT.=32.5586439° N, LONG.=103.6425148° W
F - LAT.=32.5513837° N, LONG.=103.6425108° W
G - LAT.=32.5613778° N, LONG.=103.6392276° W

**LAST TAKE POINT/
BOTTOM HOLE LOCATION**
NAD 83 NME, NMSPC ZONE 3001
Y= 570199.60 N
X= 754489.52 E
LAT: 32.5656299° N
LONG: 103.6414456° W

DISTRICT I
1825 N. French Dr., Hobbs, N.M. 88240
Phone: (575) 893-8181 Fax: (575) 393-0720

DISTRICT II
811 S. First St., Artesia, N.M. 88210
Phone: (575) 748-1283 Fax: (575) 748-9720

DISTRICT III
1000 Rio Brazos Rd., Aztec, N.M. 87410
Phone: (505) 334-6178 Fax: (505) 334-6170

DISTRICT IV
1220 S. St. Francis Dr., Santa Fe, N.M. 87505
Phone: (505) 476-3460 Fax: (505) 476-3492

State of New Mexico
Energy, Minerals & Natural Resources Department

Form C-102
Revised August 1, 2011
Submit one copy to appropriate
District Office

OIL CONSERVATION DIVISION
1220 South St. Francis Dr.
Santa Fe, N.M. 87505

AMENDED REPORT

WELL LOCATION AND ACREAGE DEDICATION PLAT

API Number		Pool Code	Pool Name
		58960	Teas; Bone Spring
Property Code	Property Name		Well Number
	SANDRA JEAN 23 FED COM		601H
GRID No.	Operator Name		Elevation
330396	AVANT OPERATING, LLC		3639

10 Surface Location

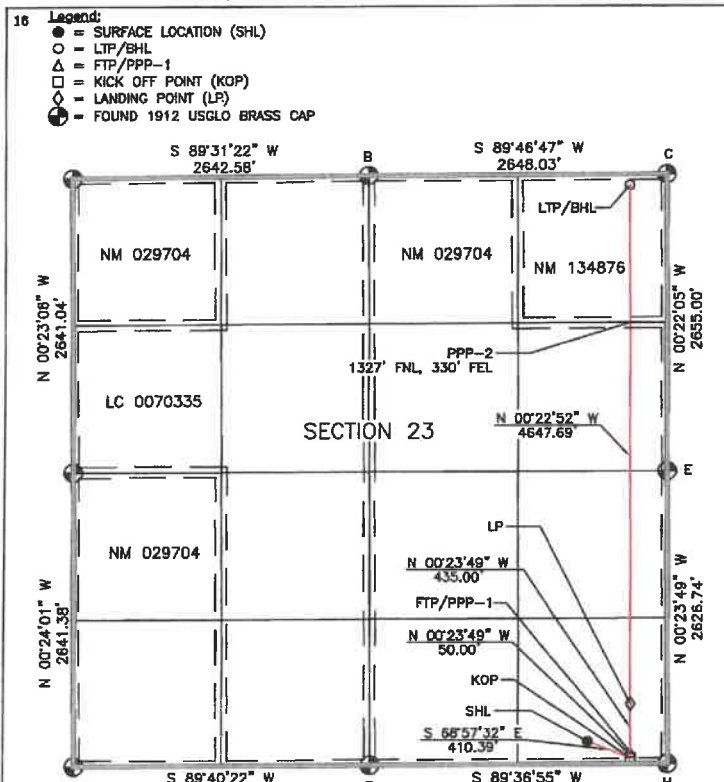
UL or lot no.	Section	Township	Range	Lot Idn	Feet from the	North/South line	Feet from the	East/West line	County
P	23	20 S	33 E		200	SOUTH	712	EAST	LEA

11 Bottom Hole Location If Different From Surface

UL or lot no.	Section	Township	Range	Lot Idn	Feet from the	North/South line	Feet from the	East/West line	County
A	23	20 S	33 E		100	NORTH	330	EAST	LEA

Dedicated Acres	Joint or Infill	Consolidation Code	Order No.
SECTION 23: 640 Ac.			

NO ALLOWABLE WILL BE ASSIGNED TO THIS COMPLETION UNTIL ALL INTERESTS HAVE BEEN CONSOLIDATED OR A NON-STANDARD UNIT HAS BEEN APPROVED BY THE DIVISION



17 OPERATOR CERTIFICATION
I hereby certify that the information contained herein is true and complete to the best of my knowledge and belief, and that this organization either owns a working interest or unleased mineral interest in the land including the proposed bottom hole location or has a right to drill this well at this location pursuant to a contract with an owner of such a mineral or working interest, or to a voluntary pooling agreement or a compulsory pooling order heretofore entered by the division.

Signature: *Sarah Ferreyros* Date: 10/20/2023
Printed Name: Sarah Ferreyros
E-mail Address: sarah@avantnr.com

18 SURVEYOR CERTIFICATION
I hereby certify that the well location shown on this plat was plotted from field notes of actual surveys made by me or under my supervision, and that the same is true and correct to the best of my belief.

2/14/23
Date of Survey: 10/18/23
Plat Review: 10/18/23
Signature and Seal of Registered Surveyor: *[Signature]*
Certificate Number: 14831

SURFACE LOCATION NAD 83 NME, NMSPC ZONE 3001 Y= 565242.54 N X= 758771.24 E LAT: 32.5519279° N LONG: 103.6276548° W	KICK OFF POINT NAD 83 NME, NMSPC ZONE 3001 50' FSL, 330' FEL SEC. 23, T20S, R33E Y= 565095.19 N X= 759154.26 E LAT: 32.5515159° N LONG: 103.6264148° W	FIRST TAKE POINT/PPP-1 NAD 83 NME, NMSPC ZONE 3001 100' FSL, 330' FEL SEC. 23, T20S, R33E Y= 565145.19 N X= 759153.92 E LAT: 32.5518534° N LONG: 103.6264150° W	LANDING POINT NAD 83 NME, NMSPC ZONE 3001 535' FSL, 330' FEL SEC. 23, T20S, R33E Y= 565580.18 N X= 759150.90 E LAT: 32.5528490° N LONG: 103.6264154° W
CORNER COORDINATES TABLE NAD 83 NME, NMSPC ZONE 3001 B - Y= 570318.86 N, X= 756801.34 E C - Y= 570329.03 N, X= 759449.35 E G - Y= 567674.09 N, X= 759466.41 E H - Y= 565029.65 N, X= 756839.74 E I - Y= 565047.41 N, X= 759484.60 E	CORNER COORDINATES TABLE NAD 83 NME, NMSPC ZONE 3001 B - LAT.=32.5659182° N, LONG.=103.6339394° W C - LAT.=32.5658990° N, LONG.=103.6253443° W E - LAT.=32.5585885° N, LONG.=103.6253463° W D - LAT.=32.5513778° N, LONG.=103.6339278° W H - LAT.=32.5513788° N, LONG.=103.6253439° W	PPP-2 NAD 83 NME, NMSPC ZONE 3001 1327' FNL, 330' FEL SEC. 23, T20S, R33E Y= 569000.36 N X= 759128.16 E LAT: 32.5622500° N LONG: 103.6264155° W	LAST TAKE POINT/ BOTTOM HOLE LOCATION NAD 83 NME, NMSPC ZONE 3001 Y= 570227.77 N X= 759120.00 E LAT: 32.5658237° N LONG: 103.6264155° W

DISTRICT I
1825 N. French Dr., Hobbs, N.M. 88240
Phone: (575) 393-6161 Fax: (575) 393-0720

DISTRICT II
811 S. First St., Artesia, N.M. 88210
Phone: (575) 748-1283 Fax: (575) 748-9720

DISTRICT III
1000 Rio Brazos Rd., Artesia, N.M. 87410
Phone: (505) 334-8178 Fax: (505) 334-8170

DISTRICT IV
1220 S. St. Francis Dr., Santa Fe, N.M. 87505
Phone: (505) 476-8460 Fax: (505) 476-8482

State of New Mexico
Energy, Minerals & Natural Resources Department

Form C-102

Revised August 1, 2011

OIL CONSERVATION DIVISION
1220 South St. Francis Dr.
Santa Fe, N.M. 87505

Submit one copy to appropriate
District Office

AMENDED REPORT

WELL LOCATION AND ACREAGE DEDICATION PLAT

¹ API Number	² Pool Code 58960	³ Pool Name Teas; Bone Spring
⁴ Property Code	⁵ Property Name SANDRA JEAN 23 FED COM	⁶ Well Number 602H
⁷ OGRID No. 330396	⁸ Operator Name AVANT OPERATING, LLC	⁹ Elevation 3639

¹⁰ Surface Location

UL or lot no.	Section	Township	Range	Lot Idn	Feet from the	North/South line	Feet from the	East/West line	County
P	23	20 S	33 E		200	SOUTH	812	EAST	LEA

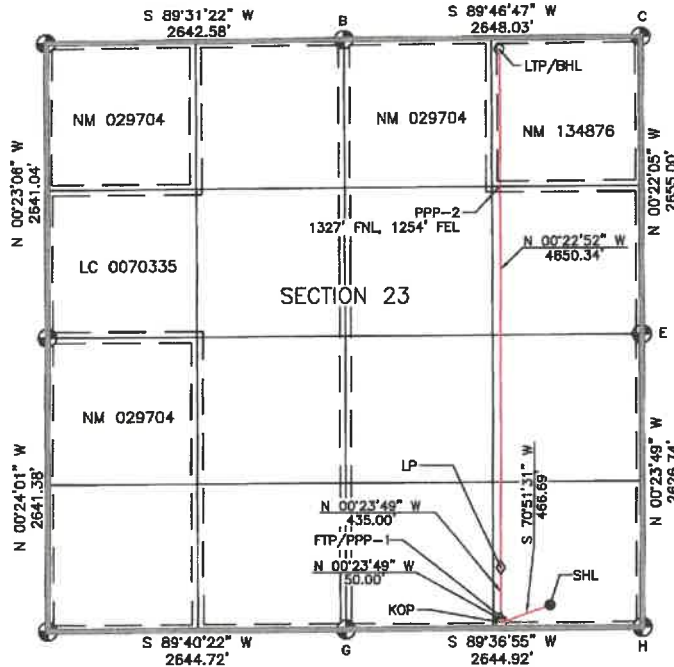
¹¹ Bottom Hole Location If Different From Surface

UL or lot no.	Section	Township	Range	Lot Idn	Feet from the	North/South line	Feet from the	East/West line	County
A	23	20 S	33 E		100	NORTH	1254	EAST	LEA

¹² Dedicated Acres SECTION 23: 640 Ac.	¹³ Joint or Infill	¹⁴ Consolidation Code	¹⁵ Order No.
--	-------------------------------	----------------------------------	-------------------------

NO ALLOWABLE WILL BE ASSIGNED TO THIS COMPLETION UNTIL ALL INTERESTS HAVE BEEN CONSOLIDATED OR A NON-STANDARD UNIT HAS BEEN APPROVED BY THE DIVISION

- ¹⁶ Legend:
- = SURFACE LOCATION (SHL)
 - = LTP/BHL
 - △ = FTP/PPP-1
 - = KICK OFF POINT (KOP)
 - ◇ = LANDING POINT (LP)
 - ⊙ = FOUND 1912 USGLO BRASS CAP



¹⁷ OPERATOR CERTIFICATION

I hereby certify that the information contained herein is true and complete to the best of my knowledge and belief, and that this organization either owns a working interest or unleased mineral interest in the land including the proposed bottom hole location or has a right to drill this well at this location pursuant to a contract with an owner of such a mineral or working interest, or in a secondary pooling agreement or a compulsory pooling order heretofore entered by the division.

Sarah Ferreyros
10/20/2023

Signature: Sarah Ferreyros
Printed Name: sarah@avantnr.com
E-mail Address:

¹⁸ SURVEYOR CERTIFICATION

I hereby certify that the well location shown on this plat was plotted from field notes of actual surveys made by me or under my supervision, and that the same is true and correct to the best of my belief.

2/14/23

Date of Survey: 10/19/23
Plat Revised: 10/19/23
Signature and Title of Professional Surveyor:



14831
Certificate Number

SURFACE LOCATION
NAD 83 NME, NMSPC ZONE 3001
Y= 565242.02 N
X= 758871.17 E
LAT: 32.5519283° N
LONG: 103.6279795° W

KICK OFF POINT
NAD 83 NME, NMSPC ZONE 3001
50' FSL, 1254' FEL
SEC. 23, T20S, R33E
Y= 565088.99 N
X= 758230.28 E
LAT: 32.5515157° N
LONG: 103.6294136° W

FIRST TAKE POINT/PPP-1
NAD 83 NME, NMSPC ZONE 3001
100' FSL, 1254' FEL
SEC. 23, T20S, R33E
Y= 565138.99 N
X= 758229.94 E
LAT: 32.5516531° N
LONG: 103.6294137° W

LANDING POINT
NAD 83 NME, NMSPC ZONE 3001
535' FSL, 1254' FEL
SEC. 23, T20S, R33E
Y= 565573.98 N
X= 758226.92 E
LAT: 32.5528488° N
LONG: 103.6294141° W

CORNER COORDINATES TABLE
NAD 83 NME, NMSPC ZONE 3001

B	Y= 570318.86 N, X= 756801.34 E
C	Y= 570329.03 N, X= 759449.35 E
D	Y= 567674.09 N, X= 759466.41 E
E	Y= 565028.85 N, X= 756839.74 E
H	Y= 565047.41 N, X= 759484.60 E

CORNER COORDINATES TABLE
NAD 83 NME, NMSPC ZONE 3001

B	LAT.=32.5859162° N, LONG.=103.6339394° W
C	LAT.=32.5858959° N, LONG.=103.6253443° W
D	LAT.=32.5858989° N, LONG.=103.6253463° W
G	LAT.=32.5513778° N, LONG.=103.6339276° W
H	LAT.=32.5513786° N, LONG.=103.6253439° W

PPP-2
NAD 83 NME, NMSPC ZONE 3001
1327' FNL, 1254' FEL
SEC. 23, T20S, R33E
Y= 568996.99 N
X= 758204.16 E
LAT: 32.5622575° N
LONG: 103.6294145° W

**LAST TAKE POINT/
BOTTOM HOLE LOCATION**
NAD 83 NME, NMSPC ZONE 3001
Y= 570224.22 N
X= 758196.00 E
LAT: 32.5656308° N
LONG: 103.6294147° W

DISTRICT I
1835 N. French Dr., Hobbs, N.M. 88240
Phone: (575) 393-6161 Fax: (575) 893-0720

DISTRICT II
811 S. First St., Artesia, N.M. 88210
Phone: (575) 748-1283 Fax: (575) 748-8720

DISTRICT III
1000 Eln Brasos Rd., Aztec, N.M. 87410
Phone: (505) 334-8178 Fax: (505) 334-8170

DISTRICT IV
1230 S. St. Francis Dr., Santa Fe, N.M. 87506
Phone: (505) 478-3460 Fax: (505) 478-3462

State of New Mexico
Energy, Minerals & Natural Resources Department

Form C-102

Revised August 1, 2011

OIL CONSERVATION DIVISION
1220 South St. Francis Dr.
Santa Fe, N.M. 87505

Submit one copy to appropriate
District Office

AMENDED REPORT

WELL LOCATION AND ACREAGE DEDICATION PLAT

¹ API Number		² Pool Code		³ Pool Name	
		58960		Teas; Bone Spring	
⁴ Property Code		⁵ Property Name			⁶ Well Number
		SANDRA JEAN 23 FED COM			603H
⁷ OGRD No.		⁸ Operator Name			⁹ Elevation
330396		AVANT OPERATING, LLC			3632

¹⁰ Surface Location

UL or lot no.	Section	Township	Range	Lot Idn	Feet from the	North/South line	Feet from the	East/West line	County
O	23	20 S	33 E		200	SOUTH	2057	EAST	LEA

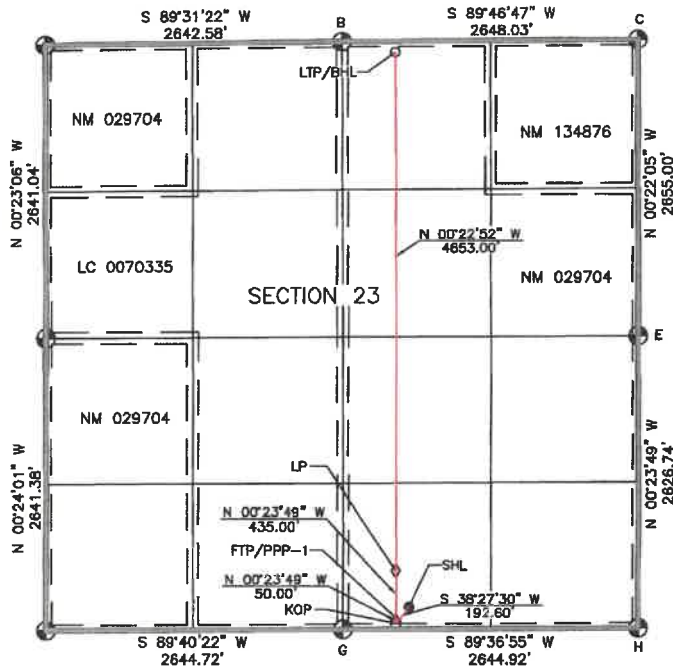
¹¹ Bottom Hole Location If Different From Surface

UL or lot no.	Section	Township	Range	Lot Idn	Feet from the	North/South line	Feet from the	East/West line	County
B	23	20 S	33 E		100	NORTH	2178	EAST	LEA

¹² Dedicated Acres	¹³ Joint or Infill	¹⁴ Consolidation Code	¹⁵ Order No.
SECTION 23: 640 Ac.			

NO ALLOWABLE WILL BE ASSIGNED TO THIS COMPLETION UNTIL ALL INTERESTS HAVE BEEN CONSOLIDATED OR A NON-STANDARD UNIT HAS BEEN APPROVED BY THE DIVISION

- ¹⁶ Legend:
- = SURFACE LOCATION (SHL)
 - = LTP/BHL
 - △ = FTP/PPP-1
 - = KICK OFF POINT (KOP)
 - ◇ = LANDING POINT (LP)
 - ⊙ = FOUND 1912 USGLO BRASS CAP



SURFACE LOCATION
NAD 83 NME, NMSPC ZONE 3001
Y= 565233.60 N
X= 757426.09 E
LAT: 32.5519278° N
LONG: 103.6320203° W

KICK OFF POINT
NAD 83 NME, NMSPC ZONE 3001
50' FSL, 2178' FEL
SEC. 23, T20S, R33E
Y= 565082.79 N
X= 757306.30 E
LAT: 32.5515154° N
LONG: 103.6324123° W

FIRST TAKE POINT/PPP-1
NAD 83 NME, NMSPC ZONE 3001
100' FSL, 2178' FEL
SEC. 23, T20S, R33E
Y= 565132.78 N
X= 757305.96 E
LAT: 32.5516528° N
LONG: 103.6324124° W

LANDING POINT
NAD 83 NME, NMSPC ZONE 3001
535' FSL, 2178' FEL
SEC. 23, T20S, R33E
Y= 565567.77 N
X= 757302.94 E
LAT: 32.5528485° N
LONG: 103.6324128° W

CORNER COORDINATES TABLE
NAD 83 NME, NMSPC ZONE 3001

B	- Y= 570318.86 N, X= 758801.34 E
C	- Y= 570329.03 N, X= 759449.35 E
E	- Y= 567874.09 N, X= 759468.41 E
G	- Y= 565029.65 N, X= 756839.74 E
H	- Y= 585047.41 N, X= 758484.60 E

CORNER COORDINATES TABLE
NAD 83 NME, NMSPC ZONE 3001

B	- LAT.=32.5859162° N, LONG.=103.6339394° W
C	- LAT.=32.5658980° N, LONG.=103.6253443° W
E	- LAT.=32.5585985° N, LONG.=103.6253463° W
G	- LAT.=32.5513778° N, LONG.=103.6339276° W
H	- LAT.=32.5513786° N, LONG.=103.6253439° W

**LAST TAKE POINT/
BOTTOM HOLE LOCATION**
NAD 83 NME, NMSPC ZONE 3001
Y= 570220.87 N
X= 757272.00 E
LAT: 32.5656378° N
LONG: 103.6324138° W

¹⁷ OPERATOR CERTIFICATION

I hereby certify that the information contained herein is true and complete to the best of my knowledge and belief, and that this organization either owns a working interest or retained mineral interest in the land including the proposed bottom hole location or has a right to drill this well at this location pursuant to a contract with an owner of such a mineral or working interest, or to a voluntary pooling agreement or a compulsory pooling order heretofore entered by the division.

Sarah Ferreyros 10/20/2023
Signature Date
Printed Name Sarah Ferreyros
E-mail Address sarah@avantnr.com

¹⁸ SURVEYOR CERTIFICATION

I hereby certify that the well location shown on this plat was plotted from field notes of actual surveys made by me or under my supervision, and that the same is true and correct to the best of my belief.

2/14/23

Date of Survey
Plat Revised: 10/10/23

Signature and Title
JUAN A. VUKONICH
Professional Surveyor
14831

Certificate Number

DISTRICT I
1825 W. French Dr., Hobbs, N.M. 88240
Phone: (575) 393-8161 Fax: (575) 393-0720

DISTRICT II
811 S. First St., Artesia, N.M. 88210
Phone: (575) 748-1283 Fax: (575) 748-9720

DISTRICT III
1000 Elo Brazos Rd., Artec, N.M. 87410
Phone: (505) 334-6178 Fax: (505) 334-6170

DISTRICT IV
1220 S. St. Francis Dr., Santa Fe, N.M. 87505
Phone: (505) 476-3460 Fax: (505) 476-3462

State of New Mexico
Energy, Minerals & Natural Resources Department

Form C-102
Revised August 1, 2011
Submit one copy to appropriate
District Office

OIL CONSERVATION DIVISION
1220 South St. Francis Dr.
Santa Fe, N.M. 87505

AMENDED REPORT

WELL LOCATION AND ACREAGE DEDICATION PLAT

¹ AFI Number	² Pool Code 58960	³ Pool Name Teas; Bone Spring
⁴ Property Code	⁵ Property Name SANDRA JEAN 23 FED COM	
⁷ OGRID No. 330396	⁶ Operator Name AVANT OPERATING, LLC	⁸ Well Number 604H ⁹ Elevation 3624

¹⁰ Surface Location

UL or lot no.	Section	Township	Range	Lot Idn	Feet from the	North/South line	Feet from the	East/West line	County
N	23	20 S	33 E		200	SOUTH	1868	WEST	LEA

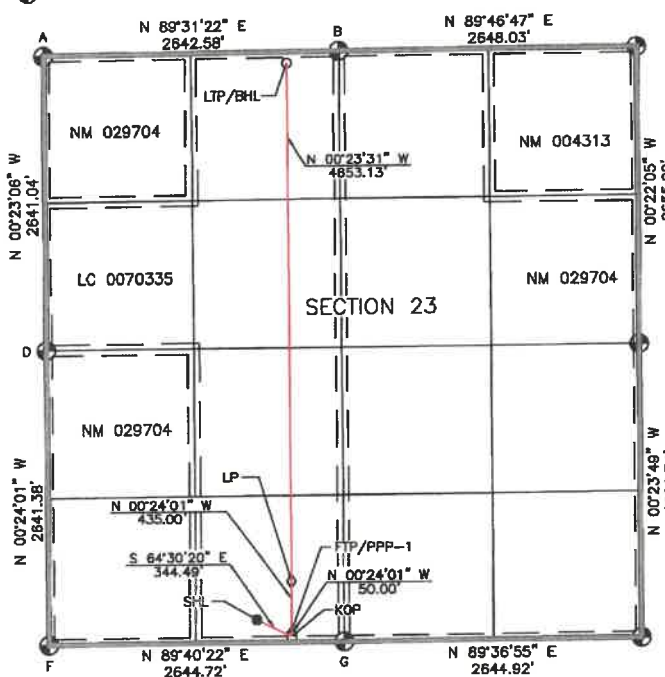
¹¹ Bottom Hole Location If Different From Surface

UL or lot no.	Section	Township	Range	Lot Idn	Feet from the	North/South line	Feet from the	East/West line	County
C	23	20 S	33 E		100	NORTH	2178	WEST	LEA

¹² Dedicated Acres SECTION 23: 640 Ac.	¹³ Joint or Infill	¹⁴ Consolidation Code	¹⁵ Order No.
--	-------------------------------	----------------------------------	-------------------------

NO ALLOWABLE WILL BE ASSIGNED TO THIS COMPLETION UNTIL ALL INTERESTS HAVE BEEN CONSOLIDATED OR A NON-STANDARD UNIT HAS BEEN APPROVED BY THE DIVISION

- ¹⁶ Legend:
- = SURFACE LOCATION (SHL)
 - = LTP/BHL
 - △ = FTP/PPP-1
 - = KICK OFF POINT (KOP)
 - ◇ = LANDING POINT (LP)
 - ⊙ = FOUND 1912 USGLD BRASS CAP



SURFACE LOCATION
NAD 83 NME, NMSPC ZONE 3001
Y= 565225.26 N
X= 756061.72 E
LAT: 32.5519295° N
LONG: 103.6364483° W

KICK OFF POINT
NAD 83 NME, NMSPC ZONE 3001
50' FSL, 2178' FWL
SEC. 23, T20S, R33E
Y= 565076.98 N
X= 756372.87 E
LAT: 32.5515163° N
LONG: 103.6354423° W

FIRST TAKE POINT/PPP-1
NAD 83 NME, NMSPC ZONE 3001
100' FSL, 2178' FWL
SEC. 23, T20S, R33E
Y= 565126.98 N
X= 756372.32 E
LAT: 32.5516537° N
LONG: 103.6354424° W

LANDING POINT
NAD 83 NME, NMSPC ZONE 3001
535' FSL, 2178' FWL
SEC. 23, T20S, R33E
Y= 565581.97 N
X= 756389.28 E
LAT: 32.5528494° N
LONG: 103.6354430° W

CORNER COORDINATES TABLE
NAD 83 NME, NMSPC ZONE 3001

A	Y= 570296.85 N, X= 754158.88 E
B	Y= 570318.85 N, X= 758801.34 E
D	Y= 567655.87 N, X= 754176.61 E
F	Y= 565014.55 N, X= 754195.06 E
G	Y= 565028.65 N, X= 756839.74 E

CORNER COORDINATES TABLE
NAD 83 NME, NMSPC ZONE 3001

A	LAT.=32.5659031° N, LONG.=103.6425168° W
B	LAT.=32.5659162° N, LONG.=103.6339394° W
D	LAT.=32.5586439° N, LONG.=103.6425148° W
F	LAT.=32.5513837° N, LONG.=103.6425106° W
G	LAT.=32.5513778° N, LONG.=103.6339278° W

**LAST TAKE POINT/
BOTTOM HOLE LOCATION**
NAD 83 NME, NMSPC ZONE 3001

Y= 570214.99 N
X= 758337.46 E
LAT: 32.5856391° N
LONG: 103.6354473° W

¹⁷ OPERATOR CERTIFICATION

I hereby certify that the information contained herein is true and complete to the best of my knowledge and belief, and that this organization either owns a working interest or unless mineral interest in the land including the proposed bottom hole location or has a right to drill this well at this location pursuant to a contract with an owner of such a mineral or working interest, or to a voluntary pooling agreement or a compulsory pooling order heretofore entered by the division.

Sarah Ferreyros 10/20/2023
Signature Date
Printed Name
sarah@avantnr.com
E-mail Address

¹⁸ SURVEYOR CERTIFICATION

I hereby certify that the well location shown on this plat was plotted from field notes of actual surveys made by me or under my supervision, and that the same is true and correct to the best of my belief.

2/14/23
Date of Survey
Plat Revised: 10/16/23
Signature and Seal of Professional Surveyor

Certificate Number 14831

DISTRICT I
1625 N. French Dr., Hobbs, N.M. 88240
Phone: (575) 393-6161 Fax: (575) 393-0720

DISTRICT II
811 S. First St., Artesia, N.M. 88210
Phone: (575) 748-1283 Fax: (575) 748-9720

DISTRICT III
1000 Rio Erasos Rd., Aztec, N.M. 87410
Phone: (505) 354-6178 Fax: (505) 354-6170

DISTRICT IV
1230 S. St. Francis Dr., Santa Fe, N.M. 87505
Phone: (505) 476-3480 Fax: (505) 476-3482

State of New Mexico
Energy, Minerals & Natural Resources Department

Form C-102

Revised August 1, 2011

OIL CONSERVATION DIVISION
1220 South St. Francis Dr.
Santa Fe, N.M. 87505

Submit one copy to appropriate
District Office

AMENDED REPORT

WELL LOCATION AND ACREAGE DEDICATION PLAT

¹ API Number	² Pool Code 58960	³ Pool Name Teas: Bone Spring
⁴ Property Code	⁵ Property Name SANDRA JEAN 23 FED COM	
⁷ GRID No. 330396	⁸ Operator Name AVANT OPERATING, LLC	⁶ Well Number 605H ⁹ Elevation 3623

¹⁰ Surface Location

UL or lot no.	Section	Township	Range	Lot Idn	Feet from the	North/South line	Feet from the	East/West line	County
N	23	20 S	33 E		200	SOUTH	1768	WEST	LEA

¹¹ Bottom Hole Location If Different From Surface

UL or lot no.	Section	Township	Range	Lot Idn	Feet from the	North/South line	Feet from the	East/West line	County
D	23	20 S	33 E		100	NORTH	1254	WEST	LEA

¹² Dedicated Acres SECTION 23: 640 Ac.	¹³ Joint or Infill	¹⁴ Consolidation Code	¹⁵ Order No.
--	-------------------------------	----------------------------------	-------------------------

NO ALLOWABLE WILL BE ASSIGNED TO THIS COMPLETION UNTIL ALL INTERESTS HAVE BEEN CONSOLIDATED OR A NON-STANDARD UNIT HAS BEEN APPROVED BY THE DIVISION

16 Legend:

- = SURFACE LOCATION (SHL)
- = LTP/BHL
- △ = FTP/PPP-1
- = KICK OFF POINT (KOP)
- ◇ = LANDING POINT (LP)
- ⊙ = FOUND 1912 USGLO BRASS CAP

17 OPERATOR CERTIFICATION

I hereby certify that the information contained herein is true and complete to the best of my knowledge and belief, and that this organization either owns a working interest or unless mineral interest in the land including the proposed bottom hole location or has a right to drill this well at this location pursuant to a contract with an owner of such a mineral or working interest, or to a voluntary pooling agreement or a compulsory pooling order heretofore entered by the division.

Signature: *Sarah Ferreyros* Date: 10/20/2023

Printed Name: Sarah Ferreyros
E-mail Address: sarah@avantnr.com

18 SURVEYOR CERTIFICATION

I hereby certify that the well location shown on this plat was plotted from field notes of actual surveys made by me or under my supervision, and that the same is true and correct to the best of my belief.

2/14/23

Date of Survey: 10/16/23
Plat Number: 10/16/23

JOHN AVUKONIN
NEW MEXICO
PROFESSIONAL SURVEYOR
14831

Certificate Number: 14831

<p>FIRST TAKE POINT/PPP-1 NAD 83 NME, NMSPC ZONE 3001 100' FSL, 1254' FWL SEC. 23, T20S, R33E Y= 565121.71 N X= 755448.34 E LAT: 32.5516559° N LONG: 103.6384411° W</p>	<p>LANDING POINT NAD 83 NME, NMSPC ZONE 3001 535' FSL, 1254' FWL SEC. 23, T20S, R33E Y= 565558.70 N X= 755445.30 E LAT: 32.5528515° N LONG: 103.6384417° W</p>	<p>PPP-2 NAD 83 NME, NMSPC ZONE 3001 2638' FSL, 1254' FWL SEC. 23, T20S, R33E Y= 567660.19 N X= 755430.91 E LAT: 32.5586333° N LONG: 103.6384439° W</p>
<p>PPP-3 NAD 83 NME, NMSPC ZONE 3001 1324' FSL, 1254' FWL SEC. 23, T20S, R33E Y= 568983.74 N X= 755421.86 E LAT: 32.5622714° N LONG: 103.6384452° W</p>	<p>CORNER COORDINATES TABLE NAD 83 NME, NMSPC ZONE 3001</p> <p>A - Y= 570298.85 N, X= 754158.66 E B - Y= 570318.86 N, X= 756801.34 E D - Y= 567655.87 N, X= 754176.61 E F - Y= 565014.55 N, X= 754195.06 E G - Y= 565029.65 N, X= 756839.74 E</p>	<p>CORNER COORDINATES TABLE NAD 83 NME, NMSPC ZONE 3001</p> <p>A - LAT.=32.5659031° N, LONG.=103.6425168° W B - LAT.=32.5659162° N, LONG.=103.6339394° W D - LAT.=32.5586439° N, LONG.=103.6425148° W F - LAT.=32.5513837° N, LONG.=103.6425108° W G - LAT.=32.5513778° N, LONG.=103.6339276° W</p>
<p>LAST TAKE POINT/ BOTTOM HOLE LOCATION NAD 83 NME, NMSPC ZONE 3001 Y= 570207.30 N X= 755413.49 E LAT: 32.5656345° N LONG: 103.6384464° W</p>		

DISTRICT I
1625 N. French Dr., Hobbs, N.M. 88240
Phone: (575) 393-6161 Fax: (575) 393-0720

DISTRICT II
811 S. First St., Artesia, N.M. 88210
Phone: (575) 748-1283 Fax: (575) 748-9720

DISTRICT III
1000 Rio Brazos Rd., Aztec, N.M. 87410
Phone: (505) 334-6178 Fax: (505) 334-6170

DISTRICT IV
1220 S. St. Francis Dr., Santa Fe, N.M. 87506
Phone: (505) 478-3460 Fax: (505) 478-3462

State of New Mexico
Energy, Minerals & Natural Resources Department

Form C-102
Revised August 1, 2011

OIL CONSERVATION DIVISION

1220 South St. Francis Dr.
Santa Fe, N.M. 87505

Submit one copy to appropriate
District Office

AMENDED REPORT

WELL LOCATION AND ACREAGE DEDICATION PLAT

1 API Number		2 Pool Code		3 Pool Name	
		58960		Teas; Bone Spring	
4 Property Code		5 Property Name			6 Well Number
		SANDRA JEAN 23 FED COM			606H
7 OGRID No.		8 Operator Name			9 Elevation
330396		AVANT OPERATING, LLC			3622

10 Surface Location

UL or lot no.	Section	Township	Range	Lot Idn	Feet from the	North/South line	Feet from the	East/West line	County
M	23	20 S	33 E		200	SOUTH	1127	WEST	LEA

11 Bottom Hole Location If Different From Surface

UL or lot no.	Section	Township	Range	Lot Idn	Feet from the	North/South line	Feet from the	East/West line	County
D	23	20 S	33 E		100	NORTH	330	WEST	LEA

12 Dedicated Acres		13 Joint or infill		14 Consolidation Code		15 Order No.	
SECTION 23: 640 Ac.							

NO ALLOWABLE WILL BE ASSIGNED TO THIS COMPLETION UNTIL ALL INTERESTS HAVE BEEN CONSOLIDATED OR A NON-STANDARD UNIT HAS BEEN APPROVED BY THE DIVISION

16 Legend:

- = SURFACE LOCATION (SHL)
- = LTP/BHL
- △ = FTP/PPP-1
- = KICK OFF POINT (KOP)
- ◇ = LANDING POINT (LP)
- ⊙ = FOUND 1912 USGLD BRASS CAP

17 OPERATOR CERTIFICATION

I hereby certify that the information contained herein is true and complete to the best of my knowledge and belief, and that this organization either owns a working interest or unleased mineral interest in the land including the proposed bottom hole location or has a right to drill this well at this location pursuant to a contract with an owner of such a mineral or working interest, or to a voluntary pooling agreement or a compulsory pooling order heretofore entered by the division.

Sarah Ferreyros 10/20/2023
Signature Date

Sarah Ferreyros
Printed Name

sarah@avantnr.com
E-mail Address

18 SURVEYOR CERTIFICATION

I hereby certify that the well location shown on this plat was plotted from field notes of actual surveys made by me or under my supervision, and that the same is true and correct to the best of my belief.

2/14/23
Date of Survey
Plat Revised: 10/19/23
Signature and Seal of Professional Surveyor

14831
Professional Surveyor
Certificate Number 14531

17 OPERATOR CERTIFICATION

I hereby certify that the information contained herein is true and complete to the best of my knowledge and belief, and that this organization either owns a working interest or unleased mineral interest in the land including the proposed bottom hole location or has a right to drill this well at this location pursuant to a contract with an owner of such a mineral or working interest, or to a voluntary pooling agreement or a compulsory pooling order heretofore entered by the division.

Sarah Ferreyros 10/20/2023
Signature Date

Sarah Ferreyros
Printed Name

sarah@avantnr.com
E-mail Address

18 SURVEYOR CERTIFICATION

I hereby certify that the well location shown on this plat was plotted from field notes of actual surveys made by me or under my supervision, and that the same is true and correct to the best of my belief.

2/14/23
Date of Survey
Plat Revised: 10/19/23
Signature and Seal of Professional Surveyor

14831
Professional Surveyor
Certificate Number 14531