

**STATE OF NEW MEXICO ENERGY, MINERALS AND NATURAL RESOURCES
DEPARTMENT
OIL CONSERVATION DIVISION**

**APPLICATION OF AVANT OPERATING, LLC
FOR APPROVAL OF NON-STANDARD UNIT
AND COMPULSORY POOLING,
LEA COUNTY, NEW MEXICO.**

CASE NO. 23677

NOTICE OF FILING REVISED C-102S

Pursuant to the Technical Examiner's request, attached for filing in the above captioned case are revised C-102s. The attached C-102s are intended to replace the C-102s previously filed with the hearing exhibits. The C-102s are revised to reflect: Avant Operating, LLC's OGRID number (330396), the pool name (Hat Mesa; Wolfcamp), the pool code (96438) and the dedicated acreage (640 acres). In addition, the horizontal spacing unit outline in box 16 has been enlarged to reflect the size of the non-standard unit requested in Avant's application. The attached C-102s are marked "Exhibit B-2 (revised)."

Respectfully submitted,

By: /s/ Deana M. Bennett

Deana M. Bennett
Earl E. DeBrine, Jr.
Yarithza Pena
Post Office Box 2168
500 Fourth Street NW, Suite 1000
Albuquerque, New Mexico 87103-2168
Telephone: 505.848.1800
Deana.bennett@modrall.com
Earl.DeBrine@modrall.com
Yarithza.Pena@modrall.com

CERTIFICATE OF SERVICE

I hereby certify that on October 27, 2023, I served a copy of the foregoing document to the following counsel of record via Electronic Mail to:

Michael H. Felderwert
Adam G. Rankin
Julia Broggi
Paula M. Vance
mfeldewert@hollandhart.com
agrarkin@hollandhart.com
jbroggi@hollandhart.com
pmvance@hollandhart.com
Attorneys for XTO Energy

Jordan Kessler
Jordan_Kessler@eogresources.com
Attorney for EOG Resources

By: /s/ Deana M. Bennett

**STATE OF NEW MEXICO ENERGY, MINERALS AND NATURAL RESOURCES
DEPARTMENT
OIL CONSERVATION DIVISION**

**APPLICATION OF AVANT OPERATING, LLC
FOR APPROVAL OF NON-STANDARD UNIT
AND COMPULSORY POOLING,
LEA COUNTY, NEW MEXICO.**

CASE NO. 23678

NOTICE OF FILING REVISED C-102S

Pursuant to the Technical Examiner's request, attached for filing in the above captioned case are revised C-102s. The attached C-102s are intended to replace the C-102s previously filed with the hearing exhibits. The C-102s are revised to reflect: Avant Operating, LLC's OGRID number (330396), the pool name (Teas; Bone Spring), the pool code (58960) and the dedicated acreage (640 acres). In addition, the horizontal spacing unit outline in box 16 has been enlarged to reflect the size of the non-standard unit requested in Avant's application. The attached C-102s are marked "Exhibit B-2 (revised)."

Respectfully submitted,

By: /s/ Deana M. Bennett

Deana M. Bennett
Earl E. DeBrine, Jr.
Yarithza Pena
Post Office Box 2168
500 Fourth Street NW, Suite 1000
Albuquerque, New Mexico 87103-2168
Telephone: 505.848.1800
Deana.bennett@modrall.com
Earl.DeBrine@modrall.com
Yarithza.Pena@modrall.com

CERTIFICATE OF SERVICE

I hereby certify that on October 27, 2023, I served a copy of the foregoing document to the following counsel of record via Electronic Mail to:

Michael H. Felderwert
Adam G. Rankin
Julia Broggi
Paula M. Vance
mfeldewert@hollandhart.com
agrarkin@hollandhart.com
jbroggi@hollandhart.com
pmvance@hollandhart.com
Attorneys for XTO Energy

Jordan Kessler
Jordan_Kessler@eogresources.com
Attorney for EOG Resources

By: /s/ Deana M. Bennett

DISTRICT I
1625 N. French Dr., Hobbs, N.M. 88240
Phone: (575) 393-6161 Fax: (575) 393-0720

DISTRICT II
811 S. First St., Artesia, N.M. 88210
Phone: (575) 748-1263 Fax: (575) 748-9720

DISTRICT III
1000 Rio Huerfano Rd., Artec, N.M. 87410
Phone: (505) 334-6176 Fax: (505) 334-6170

DISTRICT IV
1220 S. St. Francis Dr., Santa Fe, N.M. 87505
Phone: (505) 476-3460 Fax: (505) 476-3462

State of New Mexico
Energy, Minerals & Natural Resources Department

Form C-102
Revised August 1, 2011
Submit one copy to appropriate
District Office

OIL CONSERVATION DIVISION
1220 South St. Francis Dr.
Santa Fe, N.M. 87505

AMENDED REPORT

WELL LOCATION AND ACREAGE DEDICATION PLAT

*API Number		*Pool Code	*Pool Name	
		58960	Teas; Bone Spring	
*Property Code	*Property Name			*Well Number
	SANDRA JEAN 23 FED COM			30IH
*OGRID No.	*Operator Name			*Elevation
330396	AVANT OPERATING, LLC			3638

¹⁰ Surface Location

UL or lot no.	Section	Township	Range	Lot Idn	Feet from the	North/South line	Feet from the	East/West line	County
P	23	20 S	33 E		360	SOUTH	742	EAST	LEA

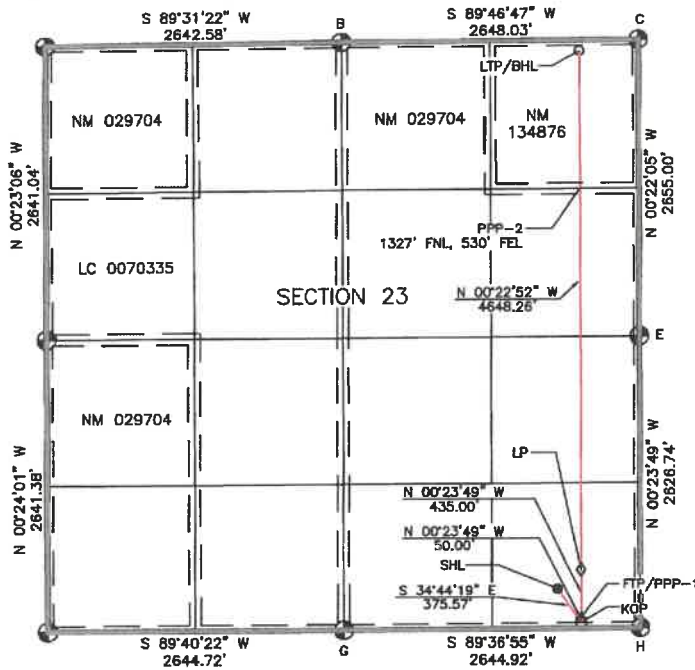
¹¹ Bottom Hole Location If Different From Surface

UL or lot no.	Section	Township	Range	Lot Idn	Feet from the	North/South line	Feet from the	East/West line	County
A	23	20 S	33 E		100	NORTH	530	EAST	LEA

*Dedicated Acres	*Joint or Infill	*Consolidation Code	*Order No.
SECTION 23: 640 Ac.			

NO ALLOWABLE WILL BE ASSIGNED TO THIS COMPLETION UNTIL ALL INTERESTS HAVE BEEN CONSOLIDATED OR A NON-STANDARD UNIT HAS BEEN APPROVED BY THE DIVISION

- ¹⁶ Legend:
- = SURFACE LOCATION (SHL)
 - = LTP/BHL
 - △ = FTP/PPP-1
 - = KICK OFF POINT (KOP)
 - ◇ = LANDING POINT (LP)
 - ⊙ = FOUND 1912 USGLD BRASS CAP



SURFACE LOCATION
NAD 83 NME, NMSPC ZONE 3001
Y= 585402.48 N
X= 758740.25 E
LAT: 32.5523681° N
LONG: 103.6277519° W

KICK OFF POINT
NAD 83 NME, NMSPC ZONE 3001
50' FSL, 530' FEL
SEC. 23, T20S, R33E
Y= 565093.85 N
X= 758954.27 E
LAT: 32.5515159° N
LONG: 103.6270640° W

FIRST TAKE POINT/PPP-1
NAD 83 NME, NMSPC ZONE 3001
100' FSL, 530' FEL
SEC. 23, T20S, R33E
Y= 565143.85 N
X= 758953.92 E
LAT: 32.5516533° N
LONG: 103.6270640° W

LANDING POINT
NAD 83 NME, NMSPC ZONE 3001
535' FSL, 530' FEL
SEC. 23, T20S, R33E
Y= 565578.84 N
X= 758950.91 E
LAT: 32.5528490° N
LONG: 103.6270645° W

CORNER COORDINATES TABLE
NAD 83 NME, NMSPC ZONE 3001

B	- Y= 570318.86 N, X= 756801.34 E
C	- Y= 570329.03 N, X= 759449.35 E
E	- Y= 567674.09 N, X= 759466.41 E
G	- Y= 566028.65 N, X= 756839.74 E
H	- Y= 565047.41 N, X= 759484.80 E

CORNER COORDINATES TABLE
NAD 83 NME, NMSPC ZONE 3001

B	- LAT.=32.5659162° N, LONG.=103.6339394° W
C	- LAT.=32.5658960° N, LONG.=103.6253443° W
E	- LAT.=32.5685985° N, LONG.=103.6253463° W
G	- LAT.=32.5513776° N, LONG.=103.6339276° W
H	- LAT.=32.5513786° N, LONG.=103.6253439° W

PPP-2
NAD 83 NME, NMSPC ZONE 3001
1327' FNL, 530' FEL
SEC. 23, T20S, R33E
Y= 568999.63 N
X= 758928.16 E
LAT: 32.5622516° N
LONG: 103.6270645° W

**LAST TAKE POINT/
BOTTOM HOLE LOCATION**
NAD 83 NME, NMSPC ZONE 3001
Y= 570227.00 N
X= 758920.00 E
LAT: 32.5656252° N
LONG: 103.6270847° W

¹⁷ OPERATOR CERTIFICATION

I hereby certify that the information contained herein is true and complete to the best of my knowledge and belief, and that this organization either owns a working interest or unleased mineral interest in the land including the proposed bottom hole location or has a right to drill this well at this location pursuant to a contract with an owner of such a mineral or working interest, or to a voluntary pooling agreement or a compulsory pooling order heretofore entered by the division.

Signature: *Sarah Ferreyros* Date: 10/20/2023
Printed Name: Sarah Ferreyros
E-mail Address: sarah@avantnr.com

¹⁸ SURVEYOR CERTIFICATION

I hereby certify that the well location shown on this plat was plotted from field notes of actual surveys made by me or under my supervision, and that the same is true and correct to the best of my belief.

Date of Survey: 2/14/23
Plat Revised: 10/19/23
Signature and Seal of Professional Surveyor: *J. Vukowich*
Certificate Number: 14831



DISTRICT I
1835 N. French Dr., Hobbs, N.M. 88240
Phone: (575) 393-6161 Fax: (575) 393-0720

DISTRICT II
611 S. First St., Artesia, N.M. 88210
Phone: (575) 746-1883 Fax: (575) 746-9720

DISTRICT III
1000 Rio Brazos Rd., Aztec, N.M. 87410
Phone: (505) 334-6178 Fax: (505) 334-6170

DISTRICT IV
1220 S. St. Francis Dr., Santa Fe, N.M. 87505
Phone: (505) 476-3460 Fax: (505) 476-3468

State of New Mexico
Energy, Minerals & Natural Resources Department

Form C-102

Revised August 1, 2011

OIL CONSERVATION DIVISION
1220 South St. Francis Dr.
Santa Fe, N.M. 87505

Submit one copy to appropriate
District Office

AMENDED REPORT

WELL LOCATION AND ACREAGE DEDICATION PLAT

¹ API Number	² Pool Code	³ Pool Name
	58960	Teas; Bone Spring
⁴ Property Code	⁵ Property Name	
	SANDRA JEAN 23 FED COM	
⁷ OGRD No.	⁸ Operator Name	⁶ Well Number
330396	AVANT OPERATING, LLC	302H
		⁹ Elevation
		3638

¹⁰ Surface Location

UL or lot no.	Section	Township	Range	Lot Idn	Feet from the	North/South line	Feet from the	East/West line	County
P	23	20 S	33 E		360	SOUTH	802	EAST	LEA

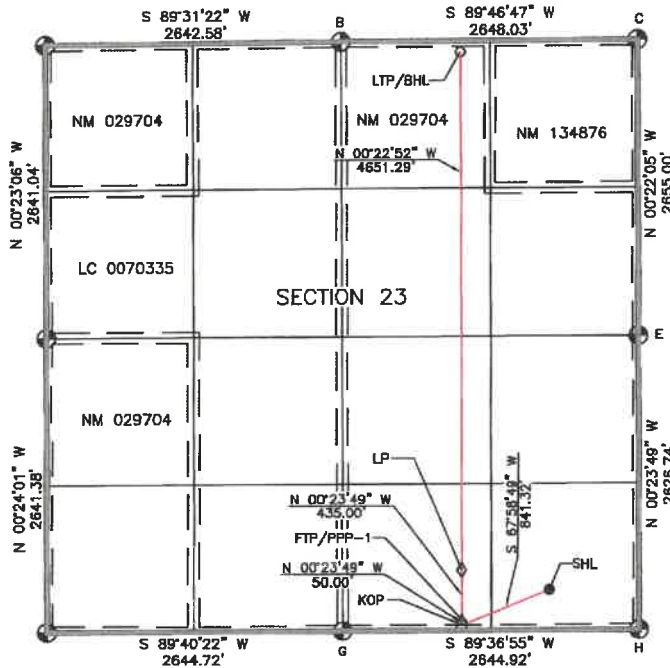
¹¹ Bottom Hole Location If Different From Surface

UL or lot no.	Section	Township	Range	Lot Idn	Feet from the	North/South line	Feet from the	East/West line	County
B	23	20 S	33 E		100	NORTH	1584	EAST	LEA

¹² Dedicated Acres	¹³ Joint or Infill	¹⁴ Consolidation Code	¹⁵ Order No.
SECTION 23: 640 Ac.			

NO ALLOWABLE WILL BE ASSIGNED TO THIS COMPLETION UNTIL ALL INTERESTS HAVE BEEN CONSOLIDATED OR A NON-STANDARD UNIT HAS BEEN APPROVED BY THE DIVISION

- ¹⁶ Legend:
- = SURFACE LOCATION (SHL)
 - = LTP/BHL
 - △ = FTP/PPP-1
 - = KICK OFF POINT (KOP)
 - ◇ = LANDING POINT (LP)
 - ⊙ = FOUND 1912 USGLO BRASS CAP



SURFACE LOCATION

NAD 83 NME, NMSPC ZONE 3001
Y= 565402.20 N
X= 758880.24 E
LAT: 32.5523684° N
LONG: 103.6279467° W

KICK OFF POINT

NAD 83 NME, NMSPC ZONE 3001
50' FSL, 1584' FEL
SEC. 23, T20S, R33E
Y= 565086.77 N
X= 757900.29 E
LAT: 32.5515156° N
LONG: 103.6304846° W

FIRST TAKE POINT/PPP-1

NAD 83 NME, NMSPC ZONE 3001
100' FSL, 1584' FEL
SEC. 23, T20S, R33E
Y= 565136.77 N
X= 757899.94 E
LAT: 32.5518530° N
LONG: 103.6304846° W

LANDING POINT

NAD 83 NME, NMSPC ZONE 3001
535' FSL, 1584' FEL
SEC. 23, T20S, R33E
Y= 565571.78 N
X= 757896.93 E
LAT: 32.5528487° N
LONG: 103.6304851° W

CORNER COORDINATES TABLE

NAD 83 NME, NMSPC ZONE 3001
B - Y= 570318.86 N, X= 756801.34 E
C - Y= 570329.03 N, X= 759449.35 E
E - Y= 567674.09 N, X= 759466.41 E
G - Y= 565029.65 N, X= 756839.74 E
H - Y= 565047.41 N, X= 759484.60 E

CORNER COORDINATES TABLE

NAD 83 NME, NMSPC ZONE 3001
B - LAT.=32.5659162° N, LONG.=103.6339394° W
C - LAT.=32.5658980° N, LONG.=103.6253443° W
E - LAT.=32.5585985° N, LONG.=103.6253463° W
G - LAT.=32.5513778° N, LONG.=103.6339276° W
H - LAT.=32.5513786° N, LONG.=103.6253438° W

**LAST TAKE POINT/
BOTTOM HOLE LOCATION**

NAD 83 NME, NMSPC ZONE 3001
Y= 570222.85 N
X= 757866.00 E
LAT: 32.5656333° N
LONG: 103.6304858° W

¹⁷ OPERATOR CERTIFICATION

I hereby certify that the information contained herein is true and complete to the best of my knowledge and belief, and that this organization either owns a working interest or unleased mineral interest in the land including the proposed bottom hole location or has a right to drill this well at this location pursuant to a contract with an owner of such a mineral or working interest, or to a voluntary pooling agreement or a compulsory pooling order heretofore entered by the division.

Sarah Ferreyros 10/20/2023
Signature Date
Printed Name
sarah@avantnr.com
E-mail Address

¹⁸ SURVEYOR CERTIFICATION

I hereby certify that the well location shown on this plat was plotted from field notes of actual surveys made by me or under my supervision, and that the same is true and correct to the best of my belief.

2/14/23

Date of Survey
Plat Number: 191203

Signature and Seal of Professional Surveyor



Certificate Number

DISTRICT I
1885 N. French Dr., Hobbs, N.M. 88240
Phone: (575) 363-6161 Fax: (575) 393-0720

DISTRICT II
611 S. First St., Artesia, N.M. 88210
Phone: (575) 748-1283 Fax: (575) 748-9720

DISTRICT III
1000 Rio Brazos Rd., Aztec, N.M. 87410
Phone: (505) 334-6178 Fax: (505) 334-6170

DISTRICT IV
1220 S. St. Francis Dr., Santa Fe, N.M. 87505
Phone: (505) 478-3480 Fax: (505) 478-3482

State of New Mexico
Energy, Minerals & Natural Resources Department

Form C-102
Revised August 1, 2011

OIL CONSERVATION DIVISION
1220 South St. Francis Dr.
Santa Fe, N.M. 87505

Submit one copy to appropriate
District Office

AMENDED REPORT

WELL LOCATION AND ACREAGE DEDICATION PLAT

¹ API Number	² Pool Code 58960	³ Pool Name Teas; Bone Spring
⁴ Property Code	⁵ Property Name SANDRA JEAN 23 FED COM	⁶ Well Number 303H
⁷ GRID No. 330396	⁸ Operator Name AVANT OPERATING, LLC	⁹ Elevation 3631

¹⁰ Surface Location

UL or lot no.	Section	Township	Range	Lot Idn	Feet from the	North/South line	Feet from the	East/West line	County
O	23	20 S	33 E		360	SOUTH	2067	EAST	LEA

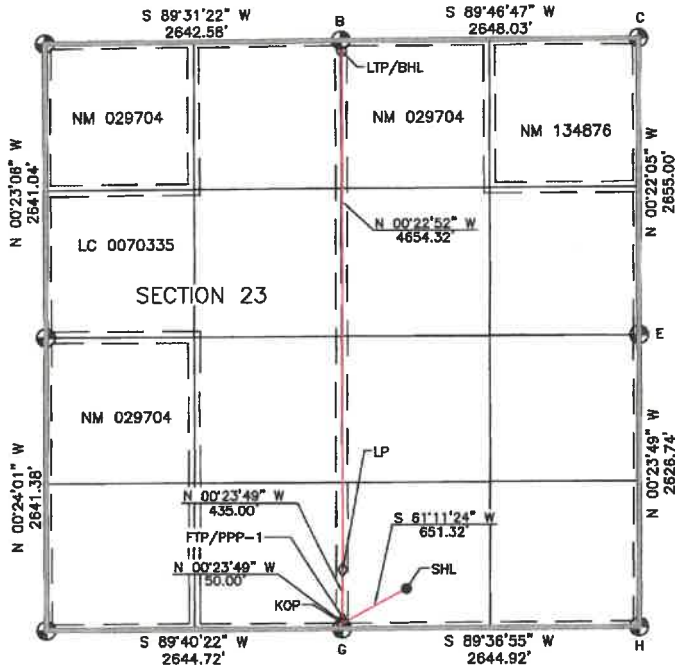
¹¹ Bottom Hole Location If Different From Surface

UL or lot no.	Section	Township	Range	Lot Idn	Feet from the	North/South line	Feet from the	East/West line	County
B	23	20 S	33 E		100	NORTH	2640	EAST	LEA

¹² Dedicated Acres SECTION 23: 640 Ac.	¹³ Joint or Infill	¹⁴ Consolidation Code	¹⁵ Order No.
--	-------------------------------	----------------------------------	-------------------------

NO ALLOWABLE WILL BE ASSIGNED TO THIS COMPLETION UNTIL ALL INTERESTS HAVE BEEN CONSOLIDATED OR A NON-STANDARD UNIT HAS BEEN APPROVED BY THE DIVISION

- ¹⁶ Legend:
- = SURFACE LOCATION (SHL)
 - = LTP/BHL
 - △ = FTP/PPP-1
 - = KICK OFF POINT (KOP)
 - ◇ = LANDING POINT (LP)
 - ⊙ = FOUND 1912 USGLO BRASS CAP



¹⁷ OPERATOR CERTIFICATION

I hereby certify that the information contained herein is true and complete to the best of my knowledge and belief, and that this organization either owns a working interest or unleased mineral interest in the land including the proposed bottom hole location or has a right to drill this well at this location pursuant to a contract with an owner of such a mineral or working interest, or to a voluntary pooling agreement or a compulsory pooling order heretofore entered by the division.

Sarah Ferreyros 10/20/2023
Signature Date
Printed Name
sarah@avantnr.com
E-mail Address

¹⁸ SURVEYOR CERTIFICATION

I hereby certify that the well location shown on this plat was plotted from field notes of actual surveys made by me or under my supervision, and that the same is true and correct to the best of my belief.

2/14/23
Date of Survey
Plat Number 14831
Signature and Seal of Professional Surveyor
14831
PROFESSIONAL SURVEYOR
Certificate Number 14831

SURFACE LOCATION
NAD 83 NME, NMSPC ZONE 3001
Y= 585393.56 N
X= 757415.01 E
LAT: 32.5523676° N
LONG: 103.6320529° W

KICK OFF POINT
NAD 83 NME, NMSPC ZONE 3001
50' FSL, 2640' FEL
SEC. 23, T20S, R33E
Y= 565079.88 N
X= 758844.31 E
LAT: 32.5515152° N
LONG: 103.6339115° W

FIRST TAKE POINT/PPP-1
NAD 83 NME, NMSPC ZONE 3001
100' FSL, 2640' FEL
SEC. 23, T20S, R33E
Y= 565129.88 N
X= 758843.97 E
LAT: 32.5516527° N
LONG: 103.6339117° W

LANDING POINT
NAD 83 NME, NMSPC ZONE 3001
535' FSL, 2640' FEL
SEC. 23, T20S, R33E
Y= 565584.67 N
X= 756840.96 E
LAT: 32.5528483° N
LONG: 103.6339122° W

CORNER COORDINATES TABLE
NAD 83 NME, NMSPC ZONE 3001
B - Y= 570318.86 N, X= 756801.34 E
C - Y= 570329.03 N, X= 759449.35 E
G - Y= 567874.09 N, X= 759488.41 E
H - Y= 565029.85 N, X= 756839.74 E
I - Y= 565047.41 N, X= 759484.60 E

CORNER COORDINATES TABLE
NAD 83 NME, NMSPC ZONE 3001
B - LAT.=32.5659162° N, LONG.=103.6339394° W
C - LAT.=32.5658960° N, LONG.=103.6253443° W
E - LAT.=32.5585985° N, LONG.=103.6253463° W
G - LAT.=32.5513778° N, LONG.=103.6339276° W
H - LAT.=32.5513786° N, LONG.=103.6253439° W

**LAST TAKE POINT/
BOTTOM HOLE LOCATION**
NAD 83 NME, NMSPC ZONE 3001
Y= 570218.89 N
X= 756810.01 E
LAT: 32.5656412° N
LONG: 103.6339134° W

DISTRICT I
1825 N. French Dr., Hobbs, N.M. 88240
Phone: (575) 393-8161 Fax: (575) 393-0720

DISTRICT II
811 S. First St., Artesia, N.M. 88210
Phone: (575) 748-1283 Fax: (575) 748-9720

DISTRICT III
1000 Rio Brazos Rd., Artesia, N.M. 87410
Phone: (505) 334-8178 Fax: (505) 334-8170

DISTRICT IV
1220 S. St. Francis Dr., Santa Fe, N.M. 87505
Phone: (505) 478-3460 Fax: (505) 478-3482

State of New Mexico
Energy, Minerals & Natural Resources Department

Form C-102
Revised August 1, 2011
Submit one copy to appropriate
District Office

OIL CONSERVATION DIVISION
1220 South St. Francis Dr.
Santa Fe, N.M. 87505

AMENDED REPORT

WELL LOCATION AND ACREAGE DEDICATION PLAT

¹ API Number	² Pool Code 58960	³ Pool Name Teas; Bone Spring
⁴ Property Code	⁵ Property Name SANDRA JEAN 23 FED COM	
⁷ OGRID No. 330396	⁸ Operator Name AVANT OPERATING, LLC	⁶ Well Number 304H ⁹ Elevation 3621

¹⁰ Surface Location

UL or lot no.	Section	Township	Range	Lot Idn	Feet from the	North/South line	Feet from the	East/West line	County
M	23	20 S	33 E		360	SOUTH	1197	WEST	LEA

¹¹ Bottom Hole Location If Different From Surface

UL or lot no.	Section	Township	Range	Lot Idn	Feet from the	North/South line	Feet from the	East/West line	County
C	23	20 S	33 E		100	NORTH	1584	WEST	LEA

¹² Dedicated Acres SECTION 23: 640 Ac.	¹³ Joint or Infill	¹⁴ Consolidation Code	¹⁵ Order No.
--	-------------------------------	----------------------------------	-------------------------

NO ALLOWABLE WILL BE ASSIGNED TO THIS COMPLETION UNTIL ALL INTERESTS HAVE BEEN CONSOLIDATED OR A NON-STANDARD UNIT HAS BEEN APPROVED BY THE DIVISION

16 Legend:

- = SURFACE LOCATION (SHL)
- = LTP/BHL
- △ = FTP/PPP-1
- ◇ = KICK OFF POINT (KOP)
- ◊ = LANDING POINT (LP)
- ⊙ = FOUND 1812 USGLO BRASS CAP

SURFACE LOCATION
NAD 83 NME, NMSPC ZONE 3001
Y= 565381.49 N
X= 755389.48 E
LAT: 32.5523713° N
LONG: 103.6386226° W

KICK OFF POINT
NAD 83 NME, NMSPC ZONE 3001
50' FSL, 1584' FWL
SEC. 23, T20S, R33E
Y= 565073.59 N
X= 755778.68 E
LAT: 32.5515177° N
LONG: 103.6373700° W

FIRST TAKE POINT/PPP-1
NAD 83 NME, NMSPC ZONE 3001
100' FSL, 1584' FWL
SEC. 23, T20S, R33E
Y= 565123.59 N
X= 755778.33 E
LAT: 32.5516551° N
LONG: 103.6373701° W

LANDING POINT
NAD 83 NME, NMSPC ZONE 3001
535' FSL, 1584' FWL
SEC. 23, T20S, R33E
Y= 565558.59 N
X= 755775.29 E
LAT: 32.5528508° N
LONG: 103.6373707° W

CORNER COORDINATES TABLE
NAD 83 NME, NMSPC ZONE 3001

A - Y= 570296.85 N, X= 754158.86 E
B - Y= 570318.86 N, X= 756801.34 E
D - Y= 567855.87 N, X= 754178.81 E
F - Y= 569014.55 N, X= 754195.06 E
G - Y= 565029.65 N, X= 756838.74 E

17 OPERATOR CERTIFICATION

I hereby certify that the information contained herein is true and complete to the best of my knowledge and belief, and that this organization either owns a working interest or unleased mineral interest in the land including the proposed bottom hole location or has a right to drill this well at this location pursuant to a contract with an owner of such a mineral or working interest, or to a voluntary pooling agreement or a compulsory pooling order heretofore entered by the division.

10/20/2023
Signature: *Sarah Ferreyros*
Date: _____
Printed Name: Sarah Ferreyros
E-mail Address: sarah@avantnr.com

18 SURVEYOR CERTIFICATION

I hereby certify that the well location shown on this plat was plotted from field notes of actual surveys made by me or under my supervision, and that the same is true and correct to the best of my belief.

2/14/23
Date of Survey
Plat Revised: 10/16/23
Signature and Seal: *John Vukovich*

14831
Certificate Number: 14831

DISTRICT I
1825 N. French Dr., Hobbs, N.M. 88240
Phone: (575) 393-6161 Fax: (575) 393-0720

DISTRICT II
811 S. First St., Artesia, N.M. 88210
Phone: (575) 748-1883 Fax: (575) 748-9720

DISTRICT III
1000 Rio Erasos Rd., Aztec, N.M. 87410
Phone: (505) 834-6178 Fax: (505) 834-6170

DISTRICT IV
1220 S. St. Francis Dr., Santa Fe, N.M. 87505
Phone: (505) 478-3480 Fax: (505) 478-3482

State of New Mexico
Energy, Minerals & Natural Resources Department

Form C-102
Revised August 1, 2011

OIL CONSERVATION DIVISION
1220 South St. Francis Dr.
Santa Fe, N.M. 87505

Submit one copy to appropriate
District Office

AMENDED REPORT

WELL LOCATION AND ACREAGE DEDICATION PLAT

¹ API Number	² Pool Code 58960	³ Pool Name Teas; Bone Spring
⁴ Property Code	⁵ Property Name SANDRA JEAN 23 FED COM	
⁶ Well Number 305H	⁷ Operator Name AVANT OPERATING, LLC	⁸ Elevation 3622
⁹ OGRID No. 330396		

¹⁰ Surface Location

UL or lot no.	Section	Township	Range	Lot Idn	Feet from the	North/South line	Feet from the	East/West line	County
M	23	20 S	33 E		360	SOUTH	1137	WEST	LEA

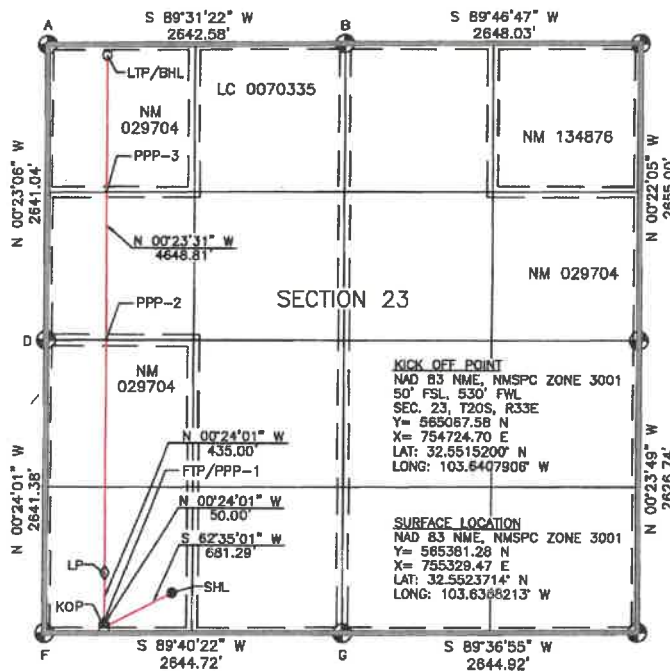
¹¹ Bottom Hole Location If Different From Surface

UL or lot no.	Section	Township	Range	Lot Idn	Feet from the	North/South line	Feet from the	East/West line	County
D	23	20 S	33 E		100	NORTH	530	WEST	LEA

¹² Dedicated Acres SECTION 23: 640 Ac.	¹³ Joint or Infill	¹⁴ Consolidation Code	¹⁵ Order No.
--	-------------------------------	----------------------------------	-------------------------

NO ALLOWABLE WILL BE ASSIGNED TO THIS COMPLETION UNTIL ALL INTERESTS HAVE BEEN CONSOLIDATED OR A NON-STANDARD UNIT HAS BEEN APPROVED BY THE DIVISION

- ¹⁶ Legend:
- = SURFACE LOCATION (SHL)
 - = LTP/BHL
 - △ = FTP/PPP-1
 - = KICK OFF POINT (KOP)
 - ◇ = LANDING POINT (LP)
 - ⊙ = FOUND 1912 USGLO BRASS CAP



FIRST TAKE POINT/PPP-1
NAD 83 NME, NMSPC ZONE 3001
100' FSL, 530' FWL
SEC. 23, T20S, R33E
Y= 585117.57 N
X= 754724.35 E
LAT: 32.5516575° N
LONG: 103.6407907° W

LANDING POINT
NAD 83 NME, NMSPC ZONE 3001
535' FSL, 530' FWL
SEC. 23, T20S, R33E
Y= 585552.98 N
X= 754721.31 E
LAT: 32.5528531° N
LONG: 103.6407814° W

PPP-2
NAD 83 NME, NMSPC ZONE 3001
2540' FSL, 530' FWL
SEC. 23, T20S, R33E
Y= 567875.89 N
X= 754708.91 E
LAT: 32.5586394° N
LONG: 103.6407937° W

PPP-3
NAD 83 NME, NMSPC ZONE 3001
1322' FSL, 530' FWL
SEC. 23, T20S, R33E
Y= 568979.48 N
X= 754697.87 E
LAT: 32.5622726° N
LONG: 103.6407951° W

CORNER COORDINATES TABLE
NAD 83 NME, NMSPC ZONE 3001

A - Y= 570296.85 N, X= 754158.86 E
B - Y= 570318.86 N, X= 758801.34 E
D - Y= 587655.87 N, X= 754176.61 E
F - Y= 585014.55 N, X= 754195.06 E
G - Y= 585029.65 N, X= 758839.74 E

CORNER COORDINATES TABLE
NAD 83 NME, NMSPC ZONE 3001

A - LAT.=32.5659031° N, LONG.=103.6425168° W
B - LAT.=32.5659162° N, LONG.=103.6339394° W
D - LAT.=32.5586438° N, LONG.=103.6425148° W
F - LAT.=32.5513837° N, LONG.=103.6425106° W
G - LAT.=32.5513778° N, LONG.=103.6339278° W

**LAST TAKE POINT/
BOTTOM HOLE LOCATION**
NAD 83 NME, NMSPC ZONE 3001

Y= 570201.26 N
X= 754689.51 E
LAT: 32.5656309° N
LONG: 103.6407964° W

17 OPERATOR CERTIFICATION

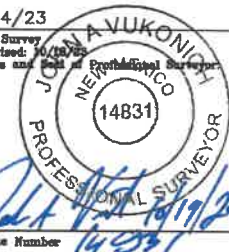
I hereby certify that the information contained herein is true and complete to the best of my knowledge and belief, and that this organization either owns a working interest or unleased mineral interest in the land including the proposed bottom hole location or has a right to drill the well at this location pursuant to a contract with an owner of such a mineral or working interest, or to a voluntary pooling agreement or a compulsory pooling order heretofore entered by the division.

Sarah Ferreyros 10/20/2023
Signature Date
Printed Name
sarah@avantnr.com
E-mail Address

18 SURVEYOR CERTIFICATION

I hereby certify that the well location shown on this plat was plotted from field notes of actual surveys made by me or under my supervision, and that the same is true and correct to the best of my belief.

2/14/23
Date of Survey
Plat Revised: 10/19/23
Signature and Seal of Professional Surveyor
John A. Yukonith
Certificate Number 14931



DISTRICT I
1825 N. French Dr., Hobbs, N.M. 88240
Phone: (575) 393-6161 Fax: (575) 393-0720

DISTRICT II
811 S. First St., Artesia, N.M. 88210
Phone: (575) 748-1283 Fax: (575) 748-8720

DISTRICT III
1000 Rio Brazos Rd., Aztec, N.M. 87410
Phone: (505) 334-6178 Fax: (505) 334-6170

DISTRICT IV
1220 S. St. Francis Dr., Santa Fe, N.M. 87505
Phone: (505) 478-3460 Fax: (505) 478-3462

State of New Mexico
Energy, Minerals & Natural Resources Department

Form C-102
Revised August 1, 2011
Submit one copy to appropriate
District Office

OIL CONSERVATION DIVISION
1220 South St. Francis Dr.
Santa Fe, N.M. 87505

AMENDED REPORT

WELL LOCATION AND ACREAGE DEDICATION PLAT

¹ API Number	² Pool Code	³ Pool Name
	58960	Teas; Bone Spring
⁴ Property Code	⁵ Property Name	⁶ Well Number
	SANDRA JEAN 23 FED COM	50IH
⁷ GRID No.	⁸ Operator Name	⁹ Elevation
330396	AVANT OPERATING, LLC	3640

¹⁰ Surface Location

UL or lot no.	Section	Township	Range	Lot Idn	Feet from the	North/South line	Feet from the	East/West line	County
P	23	20 S	33 E		200	SOUTH	732	EAST	LEA

¹¹ Bottom Hole Location If Different From Surface

UL or lot no.	Section	Township	Range	Lot Idn	Feet from the	North/South line	Feet from the	East/West line	County
A	23	20 S	33 E		100	NORTH	330	EAST	LEA

¹² Dedicated Acres	¹³ Joint or Infill	¹⁴ Consolidation Code	¹⁵ Order No.
SECTION 23: 640 Ac.			

NO ALLOWABLE WILL BE ASSIGNED TO THIS COMPLETION UNTIL ALL INTERESTS HAVE BEEN CONSOLIDATED OR A NON-STANDARD UNIT HAS BEEN APPROVED BY THE DIVISION

16 Legend:

- = SURFACE LOCATION (SHL)
- = LTP/BHL
- △ = FTP/PPP-1
- = KICK OFF POINT (KOP)
- ◇ = LANDING POINT (LP)
- ⊙ = FOUND 1812 USGLO BRASS CAP

17 OPERATOR CERTIFICATION

I hereby certify that the information contained herein is true and complete to the best of my knowledge and belief, and that this organization either owns a working interest or unleased mineral interest in the land including the proposed bottom hole location or has a right to drill this well at this location pursuant to a contract with an owner of such a mineral or working interest, or to a voluntary pooling agreement or a compulsory pooling order heretofore entered by the division.

10/20/2023

Signature: *Sarah Ferreyros*
Date: 10/20/2023

Printed Name: Sarah Ferreyros
E-mail Address: sarah@avantnr.com

18 SURVEYOR CERTIFICATION

I hereby certify that the well location shown on this plat was plotted from field notes of actual surveys made by me or under my supervision, and that the same is true and correct to the best of my belief.

2/14/23

Date of Survey: 2/14/23
Plat Revised: 10/20/23

Signature and Seal of Registered Surveyor:
JOAQUIN H. AVUKONIH
14851
2/14/23
14831
PROFESSIONAL SURVEYOR

Certificate Number: 14831

SURFACE LOCATION NAD 83 NME, NMSPC ZONE 3001 Y= 565242.48 N X= 758751.21 E LAT: 32.5519280° N LONG: 103.6277198° W	KICK OFF POINT NAD 83 NME, NMSPC ZONE 3001 50° FSL, 330' FEL SEC. 23, T20S, R33E Y= 565095.19 N X= 759154.26 E LAT: 32.5515159° N LONG: 103.6264149° W	FIRST TAKE POINT/PPP-1 NAD 83 NME, NMSPC ZONE 3001 100° FSL, 330' FEL SEC. 23, T20S, R33E Y= 565145.19 N X= 759153.92 E LAT: 32.5516534° N LONG: 103.6264150° W	LANDING POINT NAD 83 NME, NMSPC ZONE 3001 535' FSL, 330' FEL SEC. 23, T20S, R33E Y= 565580.18 N X= 759150.90 E LAT: 32.5528490° N LONG: 103.6264154° W
--	--	---	--

CORNER COORDINATES TABLE NAD 83 NME, NMSPC ZONE 3001 B - Y= 570318.86 N, X= 756801.34 E C - Y= 570329.03 N, X= 759449.35 E E - Y= 567874.09 N, X= 759468.41 E G - Y= 565029.85 N, X= 758839.74 E H - Y= 565047.41 N, X= 759484.60 E	CORNER COORDINATES TABLE NAD 83 NME, NMSPC ZONE 3001 B - LAT.=32.5659162° N, LONG.=103.6339394° W C - LAT.=32.5659960° N, LONG.=103.6253443° W E - LAT.=32.5585985° N, LONG.=103.6253463° W G - LAT.=32.5513778° N, LONG.=103.8339276° W H - LAT.=32.5513789° N, LONG.=103.6253439° W	PPP-2 NAD 83 NME, NMSPC ZONE 3001 1327' FNL, 330' FEL SEC. 23, T20S, R33E Y= 589000.36 N X= 759128.18 E LAT: 32.5622500° N LONG: 103.6264155° W	LAST TAKE POINT/ BOTTOM HOLE LOCATION NAD 83 NME, NMSPC ZONE 3001 Y= 570227.77 N X= 759120.00 E LAT: 32.5656237° N LONG: 103.6264155° W
--	--	---	---

DISTRICT I
1625 N. French Dr., Hobbs, N.M. 88240
Phone: (575) 393-6161 Fax: (575) 393-0720

DISTRICT II
811 S. First St., Artesia, N.M. 88210
Phone: (575) 748-1283 Fax: (575) 748-9720

DISTRICT III
1000 Rio Brazos Rd., Artesia, N.M. 87410
Phone: (505) 334-6178 Fax: (505) 334-6170

DISTRICT IV
1230 S. St. Francis Dr., Santa Fe, N.M. 87505
Phone: (505) 476-3460 Fax: (505) 476-3463

State of New Mexico
Energy, Minerals & Natural Resources Department

OIL CONSERVATION DIVISION
1220 South St. Francis Dr.
Santa Fe, N.M. 87505

Form C-102

Revised August 1, 2011

Submit one copy to appropriate
District Office

AMENDED REPORT

WELL LOCATION AND ACREAGE DEDICATION PLAT

1 API Number		2 Pool Code		3 Pool Name	
		58960		Teas; Bone Spring	
4 Property Code		5 Property Name			6 Well Number
		SANDRA JEAN 23 FED COM			503H
7 OGRD No.		8 Operator Name			9 Elevation
330396		AVANT OPERATING, LLC			3632

10 Surface Location

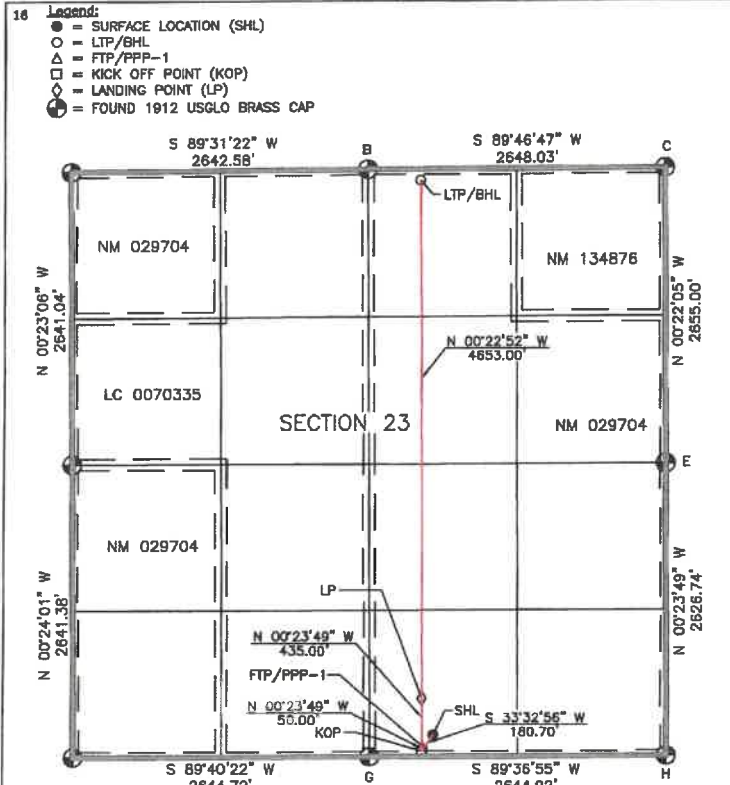
UL or lot no.	Section	Township	Range	Lot Idn	Feet from the	North/South line	Feet from the	East/West line	County
O	23	20 S	33 E		200	SOUTH	2077	EAST	LEA

11 Bottom Hole Location If Different From Surface

UL or lot no.	Section	Township	Range	Lot Idn	Feet from the	North/South line	Feet from the	East/West line	County
B	23	20 S	33 E		100	NORTH	2178	EAST	LEA

12 Dedicated Acres			13 Joint or Infill		14 Consolidation Code		15 Order No.	
SECTION 23: 640 Ac.								

NO ALLOWABLE WILL BE ASSIGNED TO THIS COMPLETION UNTIL ALL INTERESTS HAVE BEEN CONSOLIDATED OR A NON-STANDARD UNIT HAS BEEN APPROVED BY THE DIVISION



17 OPERATOR CERTIFICATION
I hereby certify that the information contained herein is true and complete to the best of my knowledge and belief, and that this organization either owns a working interest or unleased mineral interest in the land including the proposed bottom hole location or has a right to drill this well at this location pursuant to a contract with an owner of such a mineral or working interest, or to a voluntary pooling agreement or a compulsory pooling order heretofore entered by the division.

Signature: *Sarah Ferreyros* Date: 10/20/2023
Printed Name: Sarah Ferreyros
E-mail Address: sarah@avantnr.com

18 SURVEYOR CERTIFICATION
I hereby certify that the well location shown on this plat was plotted from field notes of actual surveys made by me or under my supervision, and that the same to be true and correct to the best of my belief.

2/14/23
Date of Survey
Plat Revised: 10/19/23
Signature and Seal of Professional Surveyor

JOSE AVUKONCH
NEW MEXICO
14831
PROFESSIONAL SURVEYOR
14831
Certificate Number

SURFACE LOCATION NAD 83 NME, NMSPC ZONE 3001 Y= 565233.36 N X= 757406.17 E LAT: 32.5518275° N LONG: 103.6320850° W	KICK OFF POINT NAD 83 NME, NMSPC ZONE 3001 50' FSL, 2178' FEL SEC. 23, T20S, R33E Y= 565082.78 N X= 757306.30 E LAT: 32.5515154° N LONG: 103.6324123° W	FIRST TAKE POINT/PPP-1 NAD 83 NME, NMSPC ZONE 3001 100' FSL, 2178' FEL SEC. 23, T20S, R33E Y= 565132.79 N X= 757305.96 E LAT: 32.5516528° N LONG: 103.6324124° W	LANDING POINT NAD 83 NME, NMSPC ZONE 3001 535' FSL, 2178' FEL SEC. 23, T20S, R33E Y= 565567.77 N X= 757302.94 E LAT: 32.5528485° N LONG: 103.6324126° W
--	---	--	---

CORNER COORDINATES TABLE NAD 83 NME, NMSPC ZONE 3001 B - Y= 570318.86 N, X= 756801.34 E C - Y= 570329.03 N, X= 759449.35 E D - Y= 567674.09 N, X= 759468.41 E E - Y= 565028.85 N, X= 756839.74 E H - Y= 565047.41 N, X= 759484.60 E	CORNER COORDINATES TABLE NAD 83 NME, NMSPC ZONE 3001 B - LAT.=32.5659162° N, LONG.=103.6339394° W C - LAT.=32.5658960° N, LONG.=103.6253443° W E - LAT.=32.5659585° N, LONG.=103.6253463° W G - LAT.=32.5613778° N, LONG.=103.6339276° W H - LAT.=32.5613768° N, LONG.=103.6253439° W	LAST TAKE POINT/ BOTTOM HOLE LOCATION NAD 83 NME, NMSPC ZONE 3001 Y= 570220.67 N X= 757272.00 E LAT: 32.5656378° N LONG: 103.6324138° W
--	--	---

DISTRICT I
1885 N. French Dr., Hobbs, N.M. 88240
Phone: (575) 393-6161 Fax: (575) 393-0720

DISTRICT II
611 S. First St., Artesia, N.M. 88210
Phone: (575) 748-1283 Fax: (575) 748-9720

DISTRICT III
1000 Rio Brazos Rd., Aztec, N.M. 87410
Phone: (505) 334-6178 Fax: (505) 334-6170

DISTRICT IV
1220 S. St. Francis Dr., Santa Fe, N.M. 87505
Phone: (505) 476-3460 Fax: (505) 476-3482

State of New Mexico
Energy, Minerals & Natural Resources Department

Form C-102

Revised August 1, 2011

Submit one copy to appropriate
District Office

OIL CONSERVATION DIVISION
1220 South St. Francis Dr.
Santa Fe, N.M. 87505

AMENDED REPORT

WELL LOCATION AND ACREAGE DEDICATION PLAT

¹ API Number	² Pool Code 58960	³ Pool Name Teas; Bone Spring
⁴ Property Code	⁵ Property Name SANDRA JEAN 23 FED COM	⁶ Well Number 504H
⁷ OGED No. 330396	⁸ Operator Name AVANT OPERATING, LLC	⁹ Elevation 3624

¹⁰ Surface Location

UL or lot no.	Section	Township	Range	Lot Idn	Feet from the	North/South line	Feet from the	East/West line	County
N	23	20 S	33 E	200	200	SOUTH	184.8	WEST	LEA

¹¹ Bottom Hole Location If Different From Surface

UL or lot no.	Section	Township	Range	Lot Idn	Feet from the	North/South line	Feet from the	East/West line	County
C	23	20 S	33 E	100	100	NORTH	217.8	WEST	LEA

¹² Dedicated Acres SECTION 23: 640 Ac.	¹³ Joint or Infill	¹⁴ Consolidation Code	¹⁵ Order No.
--	-------------------------------	----------------------------------	-------------------------

NO ALLOWABLE WILL BE ASSIGNED TO THIS COMPLETION UNTIL ALL INTERESTS HAVE BEEN CONSOLIDATED OR A NON-STANDARD UNIT HAS BEEN APPROVED BY THE DIVISION

16 Legend:

- = SURFACE LOCATION (SHL)
- = LTP/BHL
- △ = FTP/PPP-1
- ◇ = KICK OFF POINT (KOP)
- = LANDING POINT (LP)
- ⊙ = FOUND 1812 USGLO BRASS CAP

17 OPERATOR CERTIFICATION

I hereby certify that the information contained herein is true and complete to the best of my knowledge and belief, and that this organization either owns a working interest or unleased mineral interest in the land including the proposed bottom hole location or has a right to drill this well at this location pursuant to a contract with an owner of such a mineral or working interest, or to a voluntary pooling agreement or a compulsory pooling order heretofore entered by the division.

Sarah Ferreyros 10/20/2023
Signature Date

Sarah Ferreyros
Printed Name

sarah@avantnr.com
E-mail Address

18 SURVEYOR CERTIFICATION

I hereby certify that the well location shown on this plat was plotted from field notes of actual surveys made by me or under my supervision, and that the same is true and correct to the best of my belief.

2/14/23
Date of Survey

NEW MEXICO
14831
PROFESSIONAL SURVEYOR

John A. Vukovich 10/19/2023
Signature Date

14831
Certificate Number

<p>SURFACE LOCATION NAD 83 NME, NMSPC ZONE 3001 Y= 565225.13 N X= 756041.70 E LAT: 32.5519295° N LONG: 103.6385132° W</p>	<p>KICK OFF POINT NAD 83 NME, NMSPC ZONE 3001 50' FSL, 2178' FWL SEC. 23, T20S, R33E Y= 565076.98 N X= 756372.67 E LAT: 32.5515163° N LONG: 103.6354423° W</p>	<p>FIRST TAKE POINT/PPP-1 NAD 83 NME, NMSPC ZONE 3001 100' FSL, 2178' FWL SEC. 23, T20S, R33E Y= 565128.98 N X= 756372.32 E LAT: 32.5516537° N LONG: 103.6354424° W</p>										
<p>LANDING POINT NAD 83 NME, NMSPC ZONE 3001 535' FSL, 2178' FWL SEC. 23, T20S, R33E Y= 565561.97 N X= 756369.28 E LAT: 32.5528494° N LONG: 103.6354430° W</p>	<p>CORNER COORDINATES TABLE NAD 83 NME, NMSPC ZONE 3001</p> <table border="0"> <tr><td>A - Y= 570296.85 N, X= 754158.86 E</td></tr> <tr><td>B - Y= 570318.86 N, X= 756801.34 E</td></tr> <tr><td>D - Y= 567685.87 N, X= 754176.61 E</td></tr> <tr><td>F - Y= 565014.55 N, X= 754195.06 E</td></tr> <tr><td>G - Y= 565029.65 N, X= 756839.74 E</td></tr> </table>	A - Y= 570296.85 N, X= 754158.86 E	B - Y= 570318.86 N, X= 756801.34 E	D - Y= 567685.87 N, X= 754176.61 E	F - Y= 565014.55 N, X= 754195.06 E	G - Y= 565029.65 N, X= 756839.74 E	<p>CORNER COORDINATES TABLE NAD 83 NME, NMSPC ZONE 3001</p> <table border="0"> <tr><td>A - LAT.=32.5658031° N, LONG.=103.6425168° W</td></tr> <tr><td>B - LAT.=32.5659182° N, LONG.=103.6338394° W</td></tr> <tr><td>D - LAT.=32.5686438° N, LONG.=103.6425148° W</td></tr> <tr><td>F - LAT.=32.5513937° N, LONG.=103.6425106° W</td></tr> <tr><td>G - LAT.=32.5513778° N, LONG.=103.6339276° W</td></tr> </table>	A - LAT.=32.5658031° N, LONG.=103.6425168° W	B - LAT.=32.5659182° N, LONG.=103.6338394° W	D - LAT.=32.5686438° N, LONG.=103.6425148° W	F - LAT.=32.5513937° N, LONG.=103.6425106° W	G - LAT.=32.5513778° N, LONG.=103.6339276° W
A - Y= 570296.85 N, X= 754158.86 E												
B - Y= 570318.86 N, X= 756801.34 E												
D - Y= 567685.87 N, X= 754176.61 E												
F - Y= 565014.55 N, X= 754195.06 E												
G - Y= 565029.65 N, X= 756839.74 E												
A - LAT.=32.5658031° N, LONG.=103.6425168° W												
B - LAT.=32.5659182° N, LONG.=103.6338394° W												
D - LAT.=32.5686438° N, LONG.=103.6425148° W												
F - LAT.=32.5513937° N, LONG.=103.6425106° W												
G - LAT.=32.5513778° N, LONG.=103.6339276° W												
<p>LAST TAKE POINT/ BOTTOM HOLE LOCATION NAD 83 NME, NMSPC ZONE 3001 Y= 570214.99 N X= 755337.46 E LAT: 32.5686391° N LONG: 103.6354473° W</p>												

DISTRICT I
1825 N. French Dr., Hobbs, N.M. 88240
Phone: (575) 393-8181 Fax: (575) 393-0720

DISTRICT II
511 S. First St., Artesia, N.M. 88210
Phone: (575) 748-1283 Fax: (575) 748-9720

DISTRICT III
1000 Rio Brazos Rd., Artesia, N.M. 87410
Phone: (505) 334-6178 Fax: (505) 334-6170

DISTRICT IV
1220 S. St. Francis Dr., Santa Fe, N.M. 87506
Phone: (505) 478-3480 Fax: (505) 478-3482

State of New Mexico
Energy, Minerals & Natural Resources Department

Form C-102
Revised August 1, 2011
Submit one copy to appropriate
District Office

OIL CONSERVATION DIVISION
1220 South St. Francis Dr.
Santa Fe, N.M. 87505

AMENDED REPORT

WELL LOCATION AND ACREAGE DEDICATION PLAT

¹ API Number	² Pool Code	³ Pool Name
	58960	Teas; Bone Spring
⁴ Property Code	⁵ Property Name	⁶ Well Number
	SANDRA JEAN 23 FED COM	505H
⁷ QGRID No.	⁸ Operator Name	⁹ Elevation
330396	AVANT OPERATING, LLC	3624

¹⁰ Surface Location

UL or lot no.	Section	Township	Range	Lot Idn	Feet from the	North/South line	Feet from the	East/West line	County
N	23	20 S	33 E		200	SOUTH	1788	WEST	LEA

¹¹ Bottom Hole Location If Different From Surface

UL or lot no.	Section	Township	Range	Lot Idn	Feet from the	North/South line	Feet from the	East/West line	County
D	23	20 S	33 E		100	NORTH	1254	WEST	LEA

¹² Dedicated Acres	¹³ Joint or Infill	¹⁴ Consolidation Code	¹⁵ Order No.
SECTION 23: 640 Ac.			

NO ALLOWABLE WILL BE ASSIGNED TO THIS COMPLETION UNTIL ALL INTERESTS HAVE BEEN CONSOLIDATED OR A NON-STANDARD UNIT HAS BEEN APPROVED BY THE DIVISION

16 Legend:

- = SURFACE LOCATION (SHL)
- = LTP/BHL
- △ = FTP/PPP-1
- = KICK OFF POINT (KOP)
- ◇ = LANDING POINT (LP)
- ⊙ = FOUND 1912 USGLO BRASS CAP

17 OPERATOR CERTIFICATION

I hereby certify that the information contained herein is true and complete to the best of my knowledge and belief, and that this organization either owns a working interest or undivided mineral interest in the land including the proposed bottom hole location or has a right to drill this well at this location pursuant to a contract with an owner of such a mineral or working interest, or to a voluntary pooling agreement or a compulsory pooling order heretofore entered by the division.

Signature: *Sarah Ferreyros* Date: 10/20/2023

Printed Name: Sarah Ferreyros
E-mail Address: sarah@avantnr.com

18 SURVEYOR CERTIFICATION

I hereby certify that the well location shown on this plat was plotted from field notes of actual surveys made by me or under my supervision, and that the same is true and correct to the best of my belief.

Date of Survey: 2/14/23
Signature and Seal: *Jana Vuokoniemi* (Professional Surveyor 14831)

FIRST TAKE POINT/PPP-1
NAD 83 NME, NMSPC ZONE 3001
100' FSL, 1254' FWL
SEC. 23, T20S, R33E
Y= 585121.71 N
X= 755448.34 E
LAT: 32.5511659° N
LONG: 103.6384411° W

LANDING POINT
NAD 83 NME, NMSPC ZONE 3001
535' FSL, 1254' FWL
SEC. 23, T20S, R33E
Y= 585556.70 N
X= 755445.30 E
LAT: 32.5528515° N
LONG: 103.6384417° W

PPP-2
NAD 83 NME, NMSPC ZONE 3001
2639' FSL, 1254' FWL
SEC. 23, T20S, R33E
Y= 567660.19 N
X= 755430.91 E
LAT: 32.5586333° N
LONG: 103.6384439° W

PPP-3
NAD 83 NME, NMSPC ZONE 3001
1324' FSL, 1254' FWL
SEC. 23, T20S, R33E
Y= 568983.74 N
X= 755421.86 E
LAT: 32.5622714° N
LONG: 103.6384452° W

CORNER COORDINATES TABLE
NAD 83 NME, NMSPC ZONE 3001

A - Y= 570296.85 N, X= 754158.86 E
B - Y= 570318.86 N, X= 756901.34 E
D - Y= 587855.87 N, X= 754176.61 E
F - Y= 565014.55 N, X= 754195.06 E
G - Y= 585029.85 N, X= 758839.74 E

CORNER COORDINATES TABLE
NAD 83 NME, NMSPC ZONE 3001

A - LAT.=32.5658031° N, LONG.=103.6425168° W
B - LAT.=32.5658182° N, LONG.=103.6338394° W
D - LAT.=32.5586439° N, LONG.=103.6425145° W
F - LAT.=32.5513837° N, LONG.=103.6425108° W
G - LAT.=32.5513778° N, LONG.=103.6339276° W

**LAST TAKE POINT/
BOTTOM HOLE LOCATION**
NAD 83 NME, NMSPC ZONE 3001
Y= 570207.29 N
X= 755413.49 E
LAT: 32.5656345° N
LONG: 103.6384464° W

DISTRICT I
1626 N. French Dr., Hobbs, N.M. 88240
Phone: (575) 383-0161 Fax: (575) 383-0720

DISTRICT II
811 S. First St., Artesia, N.M. 88210
Phone: (575) 748-1283 Fax: (575) 748-9720

DISTRICT III
1000 Rio Brazos Rd., Aztec, N.M. 87410
Phone: (505) 334-0178 Fax: (505) 334-6170

DISTRICT IV
1230 S. St. Francis Dr., Santa Fe, N.M. 87505
Phone: (505) 476-3460 Fax: (505) 476-3462

State of New Mexico
Energy, Minerals & Natural Resources Department

Form C-102
Revised August 1, 2011
Submit one copy to appropriate
District Office

OIL CONSERVATION DIVISION
1220 South St. Francis Dr.
Santa Fe, N.M. 87505

AMENDED REPORT

WELL LOCATION AND ACREAGE DEDICATION PLAT

¹ APT Number	² Pool Code	³ Pool Name
	58960	Teas; Bone Spring
⁴ Property Code	⁵ Property Name	
	SANDRA JEAN 23 FED COM	
⁶ OGRID No.	⁷ Operator Name	⁸ Well Number
330396	AVANT OPERATING, LLC	506H
		⁹ Elevation
		3622

¹⁰ Surface Location

UL or lot no.	Section	Township	Range	Lot Idn	Feet from the	North/South line	Feet from the	East/West line	County
M	23	20 S	33 E		200	SOUTH	1147	WEST	LEA

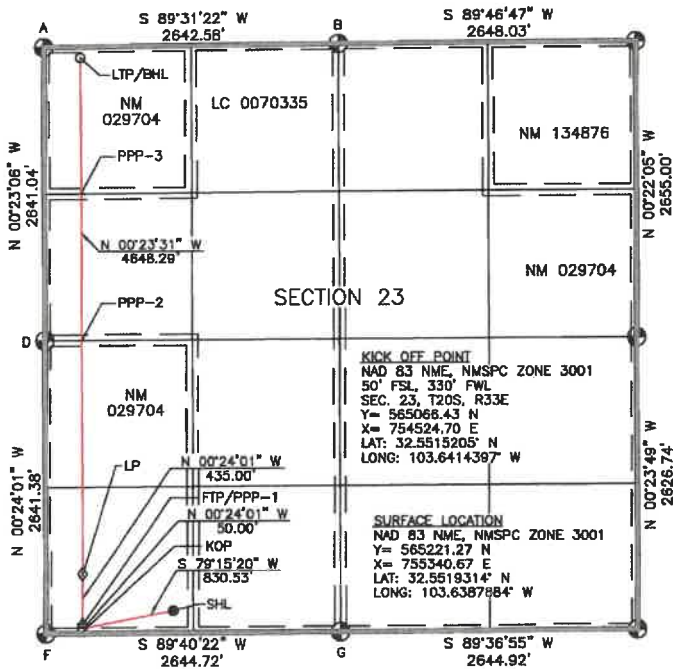
¹¹ Bottom Hole Location If Different From Surface

UL or lot no.	Section	Township	Range	Lot Idn	Feet from the	North/South line	Feet from the	East/West line	County
D	23	20 S	33 E		100	NORTH	330	WEST	LEA

¹² Dedicated Acres	¹³ Joint or Infill	¹⁴ Consolidation Code	¹⁵ Order No.
SECTION 23: 640 Ac.			

NO ALLOWABLE WILL BE ASSIGNED TO THIS COMPLETION UNTIL ALL INTERESTS HAVE BEEN CONSOLIDATED OR A NON-STANDARD UNIT HAS BEEN APPROVED BY THE DIVISION

- ¹⁶ Legend:
- = SURFACE LOCATION (SHL)
 - = LTP/BHL
 - △ = FTP/PPP-1
 - = KICK OFF POINT (KOP)
 - ◇ = LANDING POINT (LP)
 - ⊙ = FOUND 1912 USGLO BRASS CAP



FIRST TAKE POINT/PPP-1
NAD 83 NME, NMSPC ZONE 3001
100' FSL, 330' FWL
SEC. 23, T20S, R33E
Y= 565116.43 N
X= 754524.35 E
LAT: 32.5518579° N
LONG: 103.6414398° W

LANDING POINT
NAD 83 NME, NMSPC ZONE 3001
535' FSL, 330' FWL
SEC. 23, T20S, R33E
Y= 565551.42 N
X= 754521.31 E
LAT: 32.5528535° N
LONG: 103.6414405° W

PPP-2
NAD 83 NME, NMSPC ZONE 3001
2641' FSL, 330' FWL
SEC. 23, T20S, R33E
Y= 567657.00 N
X= 754506.91 E
LAT: 32.5588411° N
LONG: 103.6414428° W

PPP-3
NAD 83 NME, NMSPC ZONE 3001
1322' FSL, 330' FWL
SEC. 23, T20S, R33E
Y= 568978.30 N
X= 754497.87 E
LAT: 32.5622729° N
LONG: 103.6414443° W

CORNER COORDINATES TABLE
NAD 83 NME, NMSPC ZONE 3001

A - Y= 570296.85 N, X= 754158.86 E
B - Y= 570318.86 N, X= 756801.34 E
D - Y= 567855.87 N, X= 754176.61 E
F - Y= 565014.55 N, X= 754195.06 E
G - Y= 565028.85 N, X= 756838.74 E

CORNER COORDINATES TABLE
NAD 83 NME, NMSPC ZONE 3001

A - LAT.=32.5659031° N, LONG.=103.6425168° W
B - LAT.=32.5659162° N, LONG.=103.6339394° W
D - LAT.=32.5588438° N, LONG.=103.6425148° W
F - LAT.=32.5513637° N, LONG.=103.6425108° W
G - LAT.=32.5513778° N, LONG.=103.639276° W

¹⁷ OPERATOR CERTIFICATION

I hereby certify that the information contained herein is true and complete to the best of my knowledge and belief, and that this organization either owns a working interest or unleased mineral interest in the land including the proposed bottom hole location or has a right to drill this well at this location pursuant to a contract with an owner of such a mineral or working interest, or to a voluntary pooling agreement or a compulsory pooling order heretofore entered by the division.

Signature: *Sarah Ferreyros* Date: 10/20/2023

Printed Name: Sarah Ferreyros

E-mail Address: sarah@avantnr.com

¹⁸ SURVEYOR CERTIFICATION

I hereby certify that the well location shown on this plat was plotted from field notes of actual survey made by me or under my supervision, and that the same is true and correct to the best of my belief.

Date of Survey: 2/14/23
Plat Revised: 10/17/2023

Signature and Seal of Professional Surveyor: *John A. Vukovich*

Professional Surveyor Seal: JOHN A. VUKONICH, N.M. 14831, PROFESSIONAL SURVEYOR

Certificate Number: 14831

DISTRICT I
1825 N. French Dr., Hobbs, N.M. 88240
Phone: (575) 393-6161 Fax: (575) 393-0720

DISTRICT II
811 S. First St., Artesia, N.M. 88210
Phone: (575) 746-1283 Fax: (575) 746-9720

DISTRICT III
1000 Rio Brazos Rd., Aztec, N.M. 87410
Phone: (505) 334-6178 Fax: (505) 334-6170

DISTRICT IV
1220 S. St. Francis Dr., Santa Fe, N.M. 87505
Phone: (606) 478-3480 Fax: (606) 478-3482

State of New Mexico
Energy, Minerals & Natural Resources Department

Form C-102

Revised August 1, 2011

OIL CONSERVATION DIVISION
1220 South St. Francis Dr.
Santa Fe, N.M. 87505

Submit one copy to appropriate
District Office

AMENDED REPORT

WELL LOCATION AND ACREAGE DEDICATION PLAT

¹ API Number	² Pool Code 58960	³ Pool Name Teas; Bone Spring
⁴ Property Code	⁵ Property Name SANDRA JEAN 23 FED COM	
⁷ GRID No. 330396	⁶ Operator Name AVANT OPERATING, LLC	
		⁸ Well Number 601H
		⁹ Elevation 3639

¹⁰ Surface Location

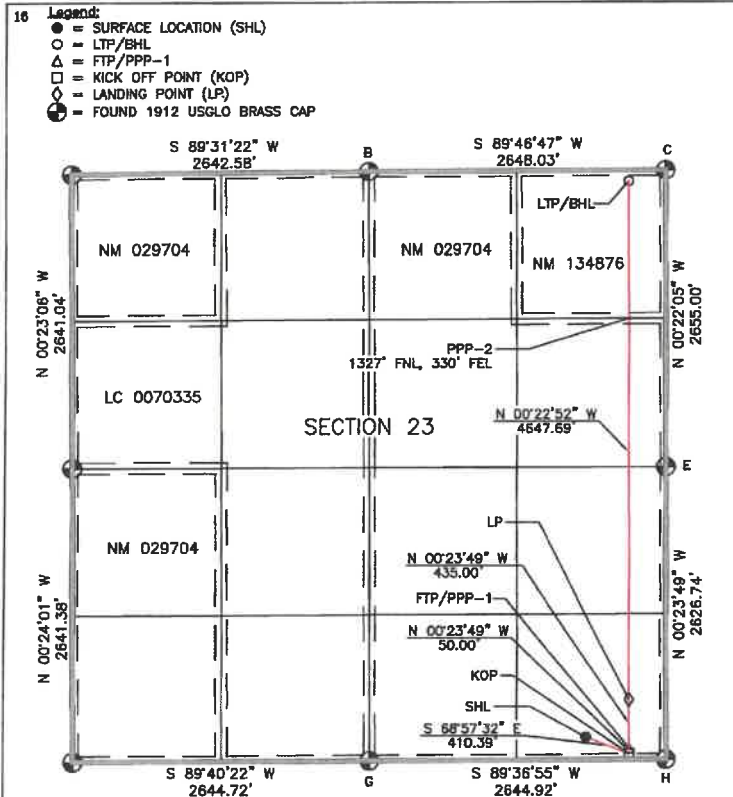
UL or lot no.	Section	Township	Range	Lot Idn	Feet from the	North/South line	Feet from the	East/West line	County
P	23	20 S	33 E		200	SOUTH	712	EAST	LEA

¹¹ Bottom Hole Location If Different From Surface

UL or lot no.	Section	Township	Range	Lot Idn	Feet from the	North/South line	Feet from the	East/West line	County
A	23	20 S	33 E		100	NORTH	330	EAST	LEA

¹² Dedicated Acres SECTION 23: 640 Ac.	¹³ Joint or Infill	¹⁴ Consolidation Code	¹⁵ Order No.
--	-------------------------------	----------------------------------	-------------------------

NO ALLOWABLE WILL BE ASSIGNED TO THIS COMPLETION UNTIL ALL INTERESTS HAVE BEEN CONSOLIDATED OR A NON-STANDARD UNIT HAS BEEN APPROVED BY THE DIVISION



17 OPERATOR CERTIFICATION

I hereby certify that the information contained herein is true and complete to the best of my knowledge and belief, and that this organization either owns a working interest or unleased mineral interest in the land including the proposed bottom hole location or has a right to drill this well at this location pursuant to a contract with an owner of such a mineral or working interest, or to a voluntary pooling agreement or a compulsory pooling order heretofore entered by the district.

Signature: *Sarah Ferreyros* Date: 10/20/2023

Printed Name: Sarah Ferreyros

E-mail Address: sarah@avantnr.com

18 SURVEYOR CERTIFICATION

I hereby certify that the well location shown on this plat was plotted from field notes of actual surveys made by me or under my supervision, and that the same is true and correct to the best of my belief.

Date of Survey: 2/14/23

Signature: *John A. Vukonic*

Professional Surveyor License No. 14831

Certificate Number: 14831

COORDINATE TYPE	POINT	NAD 83 NME, NMSPC ZONE 3001	COORDINATE TYPE	POINT	NAD 83 NME, NMSPC ZONE 3001
SURFACE LOCATION		Y= 563242.54 N X= 758771.24 E LAT: 32.5519279° N LONG: 103.6276548° W	KICK OFF POINT		Y= 585095.19 N X= 759154.26 E LAT: 32.5515159° N LONG: 103.6264149° W
CORNER COORDINATES TABLE		B - Y= 570318.85 N, X= 758801.34 E C - Y= 570328.03 N, X= 759449.35 E E - Y= 567674.09 N, X= 759468.41 E G - Y= 565029.65 N, X= 758839.74 E H - Y= 565047.41 N, X= 759484.60 E	FIRST TAKE POINT/PPP-1		Y= 565145.19 N X= 759153.82 E LAT: 32.5516534° N LONG: 103.6264150° W
		B - LAT.=32.5659162° N, LONG.=103.6339394° W C - LAT.=32.5658960° N, LONG.=103.6253443° W E - LAT.=32.5585985° N, LONG.=103.6253463° W G - LAT.=32.5513778° N, LONG.=103.6339276° W H - LAT.=32.5513785° N, LONG.=103.6253439° W	PPP-2		Y= 569000.36 N X= 759128.16 E LAT: 32.5622500° N LONG: 103.6264155° W
		B - Y= 570318.85 N, X= 758801.34 E C - Y= 570328.03 N, X= 759449.35 E E - Y= 567674.09 N, X= 759468.41 E G - Y= 565029.65 N, X= 758839.74 E H - Y= 565047.41 N, X= 759484.60 E	LAST TAKE POINT/ BOTTOM HOLE LOCATION		Y= 570227.77 N X= 759120.00 E LAT: 32.5658237° N LONG: 103.6264155° W

DISTRICT I
1825 N. French Dr., Hobbs, N.M. 88240
Phone: (575) 393-6161 Fax: (575) 393-0720

DISTRICT II
811 S. First St., Artesia, N.M. 88210
Phone: (575) 748-1283 Fax: (575) 748-9720

DISTRICT III
1000 Rio Brazos Rd., Artec, N.M. 87410
Phone: (505) 334-8178 Fax: (505) 334-8170

DISTRICT IV
1220 S. St. Francis Dr., Santa Fe, N.M. 87505
Phone: (505) 478-8480 Fax: (505) 478-3482

State of New Mexico
Energy, Minerals & Natural Resources Department

Form C-102

Revised August 1, 2011

OIL CONSERVATION DIVISION
1220 South St. Francis Dr.
Santa Fe, N.M. 87505

Submit one copy to appropriate
District Office

AMENDED REPORT

WELL LOCATION AND ACREAGE DEDICATION PLAT

¹ API Number		² Pool Code 58960		³ Pool Name Teas; Bone Spring	
⁴ Property Code		⁵ Property Name SANDRA JEAN 23 FED COM			⁶ Well Number 602H
⁷ OGRID No. 330396		⁸ Operator Name AVANT OPERATING, LLC			⁹ Elevation 3639

¹⁰ Surface Location

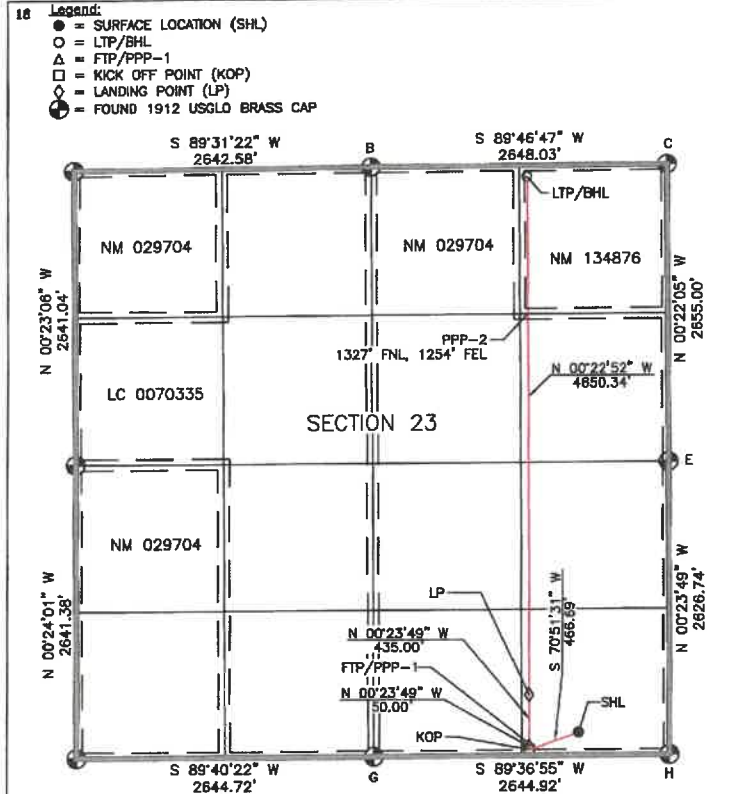
UL or lot no.	Section	Township	Range	Lot Idn	Feet from the	North/South line	Feet from the	East/West line	County
P	23	20 S	33 E		200	SOUTH	812	EAST	LEA

¹¹ Bottom Hole Location If Different From Surface

UL or lot no.	Section	Township	Range	Lot Idn	Feet from the	North/South line	Feet from the	East/West line	County
A	23	20 S	33 E		100	NORTH	1254	EAST	LEA

¹² Dedicated Acres SECTION 23: 640 Ac.	¹³ Joint or Infill	¹⁴ Consolidation Code	¹⁵ Order No.
--	-------------------------------	----------------------------------	-------------------------

NO ALLOWABLE WILL BE ASSIGNED TO THIS COMPLETION UNTIL ALL INTERESTS HAVE BEEN CONSOLIDATED OR A NON-STANDARD UNIT HAS BEEN APPROVED BY THE DIVISION



16 Legend:
● = SURFACE LOCATION (SHL)
○ = LTP/BHL
△ = FTP/PPP-1
□ = KICK OFF POINT (KOP)
◇ = LANDING POINT (LP)
⊙ = FOUND 1912 USGLO BRASS CAP

17 OPERATOR CERTIFICATION
I hereby certify that the information contained herein is true and complete to the best of my knowledge and belief, and that this representation either owns a working interest or unconsolidated mineral interest in the land including the proposed bottom hole location or has a right to drill this well at this location pursuant to a contract with the owner of such a mineral or working interest, or to a voluntary pooling agreement or a compulsory pooling order heretofore entered by the division.
Signature: *Sarah Ferreyros* Date: 10/20/2023
Printed Name: Sarah Ferreyros
E-mail Address: sarah@avantnr.com

18 SURVEYOR CERTIFICATION
I hereby certify that the well location shown on this plat was plotted from field notes of actual surveys made by me or under my supervision, and that the same is true and correct to the best of my belief.
2/14/23
Date of Survey: 10/19/23
Plat Revised: 10/19/23
Signature and Seal of Professional Surveyor: *JOYNA WUKONICH*
14831
10/19/2023
14831
Certificate Number: 14831

SURFACE LOCATION
NAD 83 NME, NMSPC ZONE 3001
Y= 565242.02 N
X= 758671.17 E
LAT: 32.5519283° N
LONG: 103.6279795° W

KICK OFF POINT
NAD 83 NME, NMSPC ZONE 3001
50' FSL, 1254' FEL
SEC. 23, T20S, R33E
Y= 565088.99 N
X= 758230.28 E
LAT: 32.5515157° N
LONG: 103.6294136° W

FIRST TAKE POINT/PPP-1
NAD 83 NME, NMSPC ZONE 3001
100' FSL, 1254' FEL
SEC. 23, T20S, R33E
Y= 565138.99 N
X= 758229.94 E
LAT: 32.5516531° N
LONG: 103.6294137° W

LANDING POINT
NAD 83 NME, NMSPC ZONE 3001
535' FSL, 1254' FEL
SEC. 23, T20S, R33E
Y= 565573.98 N
X= 758228.92 E
LAT: 32.5528488° N
LONG: 103.6294141° W

CORNER COORDINATES TABLE
NAD 83 NME, NMSPC ZONE 3001
B - Y= 570318.86 N, X= 756801.34 E
C - Y= 570329.03 N, X= 759449.35 E
G - Y= 567874.09 N, X= 759486.41 E
H - Y= 565029.85 N, X= 756839.74 E
H - Y= 565047.41 N, X= 759484.60 E

CORNER COORDINATES TABLE
NAD 83 NME, NMSPC ZONE 3001
B - LAT.=32.5859162° N, LONG.=103.6339384° W
C - LAT.=32.5859950° N, LONG.=103.6253443° W
G - LAT.=32.5589885° N, LONG.=103.6253463° W
H - LAT.=32.5513778° N, LONG.=103.6339276° W
H - LAT.=32.5513786° N, LONG.=103.6253435° W

PPP-2
NAD 83 NME, NMSPC ZONE 3001
1327' FNL, 1254' FEL
SEC. 23, T20S, R33E
Y= 568996.99 N
X= 758204.16 E
LAT: 32.5622575° N
LONG: 103.6294145° W

LAST TAKE POINT/BOTTOM HOLE LOCATION
NAD 83 NME, NMSPC ZONE 3001
Y= 570224.22 N
X= 758196.00 E
LAT: 32.5656308° N
LONG: 103.6294147° W

DISTRICT I
1625 N. French Dr., Hobbs, N.M. 88240
Phone: (576) 393-6181 Fax: (576) 393-0720

DISTRICT II
811 S. First St., Artesia, N.M. 86210
Phone: (576) 748-1283 Fax: (576) 748-9720

DISTRICT III
1000 Rio Brazos Rd., Artesia, N.M. 87410
Phone: (506) 334-8178 Fax: (506) 334-8170

DISTRICT IV
1220 S. St. Francis Dr., Santa Fe, N.M. 87505
Phone: (506) 476-3460 Fax: (506) 476-3462

State of New Mexico
Energy, Minerals & Natural Resources Department

Form C-102
Revised August 1, 2011
Submit one copy to appropriate
District Office

OIL CONSERVATION DIVISION
1220 South St. Francis Dr.
Santa Fe, N.M. 87505

AMENDED REPORT

WELL LOCATION AND ACREAGE DEDICATION PLAT

*API Number		*Pool Code 58960		*Pool Name Teas; Bone Spring	
*Property Code		*Property Name SANDRA JEAN 23 FED COM			*Well Number 603H
*GRID No. 330396		*Operator Name AVANT OPERATING, LLC			*Elevation 3632

10 Surface Location

UL or lot no.	Section	Township	Range	Lot Idn	Feet from the	North/South line	Feet from the	East/West line	County
O	23	20 S	33 E		200	SOUTH	2057	EAST	LEA

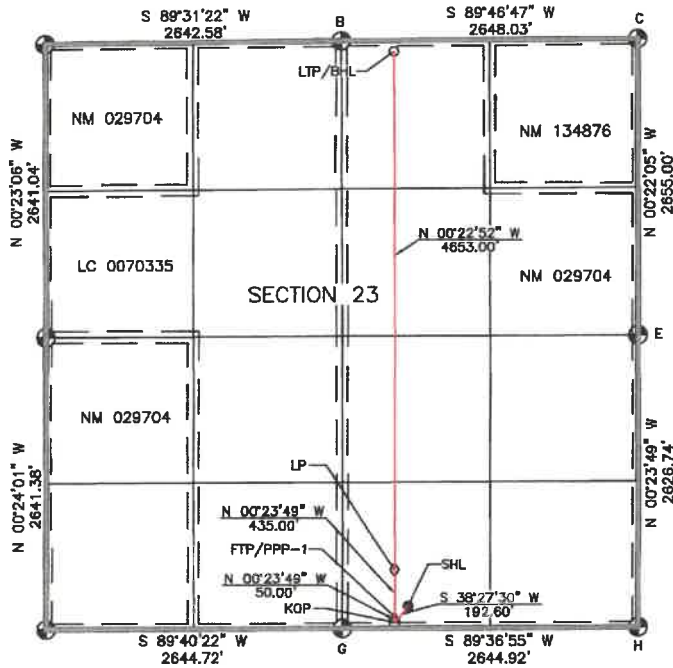
11 Bottom Hole Location If Different From Surface

UL or lot no.	Section	Township	Range	Lot Idn	Feet from the	North/South line	Feet from the	East/West line	County
B	23	20 S	33 E		100	NORTH	2178	EAST	LEA

*Dedicated Acres SECTION 23: 640 Ac.	*Joint or Infill	*Consolidation Code	*Order No.
---	------------------	---------------------	------------

NO ALLOWABLE WILL BE ASSIGNED TO THIS COMPLETION UNTIL ALL INTERESTS HAVE BEEN CONSOLIDATED OR A NON-STANDARD UNIT HAS BEEN APPROVED BY THE DIVISION

- 16 Legend:**
- = SURFACE LOCATION (SHL)
 - = LTP/BHL
 - △ = FTP/PPP-1
 - = KICK OFF POINT (KOP)
 - ◇ = LANDING POINT (LP)
 - ⊙ = FOUND 1912 USGLO BRASS CAP



SURFACE LOCATION
NAD 83 NME, NMSPC ZONE 3001
Y = 565233.80 N
X = 757426.09 E
LAT: 32.5519278° N
LONG: 103.6320203° W

KICK OFF POINT
NAD 83 NME, NMSPC ZONE 3001
50' FSL, 2178' FEL
SEC. 23, T20S, R33E
Y = 565082.79 N
X = 757306.30 E
LAT: 32.5515154° N
LONG: 103.6324123° W

FIRST TAKE POINT/PPP-1
NAD 83 NME, NMSPC ZONE 3001
100' FSL, 2178' FEL
SEC. 23, T20S, R33E
Y = 565132.78 N
X = 757305.96 E
LAT: 32.5516528° N
LONG: 103.6324124° W

LANDING POINT
NAD 83 NME, NMSPC ZONE 3001
535' FSL, 2178' FEL
SEC. 23, T20S, R33E
Y = 565567.77 N
X = 757302.94 E
LAT: 32.5528485° N
LONG: 103.6324128° W

CORNER COORDINATES TABLE
NAD 83 NME, NMSPC ZONE 3001

B	Y = 570318.86 N, X = 756801.34 E
C	Y = 570329.03 N, X = 759449.35 E
E	Y = 567874.09 N, X = 759468.41 E
G	Y = 565029.65 N, X = 756839.74 E
H	Y = 565047.41 N, X = 759484.60 E

CORNER COORDINATES TABLE
NAD 83 NME, NMSPC ZONE 3001

B	LAT = 32.5659162° N, LONG = 103.6339394° W
C	LAT = 32.5658966° N, LONG = 103.6253443° W
E	LAT = 32.5585985° N, LONG = 103.6253463° W
G	LAT = 32.5513778° N, LONG = 103.6339276° W
H	LAT = 32.5513788° N, LONG = 103.6253439° W

**LAST TAKE POINT/
BOTTOM HOLE LOCATION**
NAD 83 NME, NMSPC ZONE 3001

Y	Y = 570220.67 N
X	X = 757272.00 E
LAT	LAT: 32.5656378° N
LONG	LONG: 103.6324138° W

17 OPERATOR CERTIFICATION

I hereby certify that the information contained herein is true and complete to the best of my knowledge and belief, and that this organization either owns a working interest or unleased mineral interest in the land including the proposed bottom hole location or has a right to drill this well at this location pursuant to a contract with an owner of such a mineral or working interest, or to a voluntary pooling agreement or a compulsory pooling order heretofore entered by the district.

Sarah Ferreyros 10/20/2023
Signature Date
Sarah Ferreyros
Printed Name
sarah@avantnr.com
E-mail Address

18 SURVEYOR CERTIFICATION

I hereby certify that the well location shown on this plat was plotted from field notes of actual surveys made by me or under my supervision, and that the same is true and correct to the best of my belief.

2/14/23
Date of Survey
Plat Revised: 10/18/23
Signature and Seal
[Signature]
14891
Certificate Number

DISTRICT I
1625 N. French Dr., Hobbs, N.M. 88240
Phone: (575) 393-8161 Fax: (575) 393-0720

DISTRICT II
811 S. First St., Artesia, N.M. 88210
Phone: (575) 748-1283 Fax: (575) 748-8720

DISTRICT III
1000 Rio Brazos Ed., Artec, N.M. 87410
Phone: (505) 334-6178 Fax: (505) 334-6170

DISTRICT IV
1220 S. St. Francis Dr., Santa Fe, N.M. 87505
Phone: (505) 476-3460 Fax: (505) 476-3462

State of New Mexico
Energy, Minerals & Natural Resources Department

Form C-102
Revised August 1, 2011
Submit one copy to appropriate
District Office

OIL CONSERVATION DIVISION
1220 South St. Francis Dr.
Santa Fe, N.M. 87505

AMENDED REPORT

WELL LOCATION AND ACREAGE DEDICATION PLAT

¹ API Number	² Pool Code 58960	³ Pool Name Teas; Bone Spring
⁴ Property Code	⁵ Property Name SANDRA JEAN 23 FED COM	⁶ Well Number 604H
⁷ GRID No. 330396	⁸ Operator Name AVANT OPERATING, LLC	⁹ Elevation 3624

¹⁰ Surface Location

UL or lot no.	Section	Township	Range	Lot Idn	Feet from the	North/South line	Feet from the	East/West line	County
N	23	20 S	33 E		200	SOUTH	1868	WEST	LEA

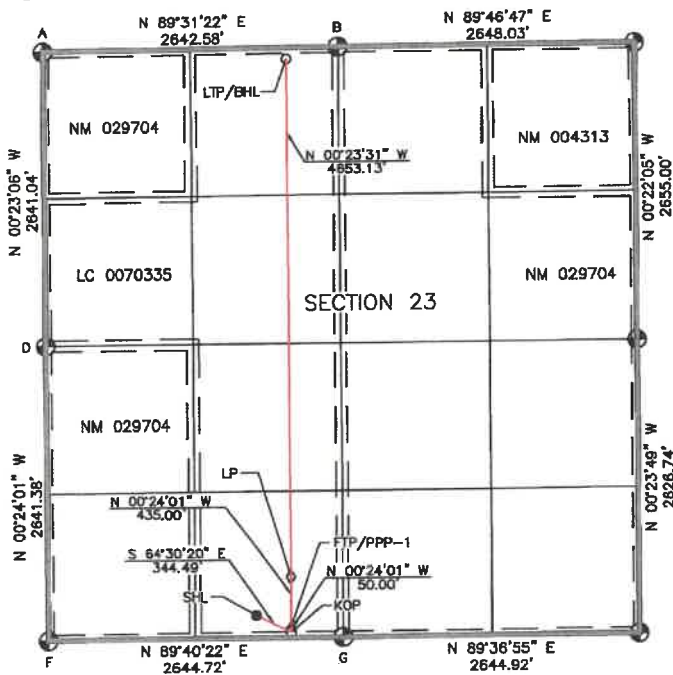
¹¹ Bottom Hole Location If Different From Surface

UL or lot no.	Section	Township	Range	Lot Idn	Feet from the	North/South line	Feet from the	East/West line	County
C	23	20 S	33 E		100	NORTH	2178	WEST	LEA

¹² Dedicated Acres SECTION 23: 640 Ac.	¹³ Joint or Infill	¹⁴ Consolidation Code	¹⁵ Order No.
--	-------------------------------	----------------------------------	-------------------------

NO ALLOWABLE WILL BE ASSIGNED TO THIS COMPLETION UNTIL ALL INTERESTS HAVE BEEN CONSOLIDATED OR A NON-STANDARD UNIT HAS BEEN APPROVED BY THE DIVISION

- 16 Legend:**
- = SURFACE LOCATION (SHL)
 - = LTP/BHL
 - △ = FTP/PPP-1
 - = KICK OFF POINT (KOP)
 - ◇ = LANDING POINT (LP)
 - ⊕ = FOUND 1912 USGLO BRASS CAP



SURFACE LOCATION
NAD 83 NME, NMSPC ZONE 3001
Y= 565225.28 N
X= 758061.72 E
LAT: 32.5519295° N
LONG: 103.6364483° W

KICK OFF POINT
NAD 83 NME, NMSPC ZONE 3001
50' FSL, 2178' FWL
SEC. 23, T20S, R33E
Y= 565076.98 N
X= 758372.67 E
LAT: 32.5515183° N
LONG: 103.6354423° W

FIRST TAKE POINT/PPP-1
NAD 83 NME, NMSPC ZONE 3001
100' FSL, 2178' FWL
SEC. 23, T20S, R33E
Y= 565126.98 N
X= 756372.32 E
LAT: 32.5516537° N
LONG: 103.6354424° W

LANDING POINT
NAD 83 NME, NMSPC ZONE 3001
538' FSL, 2178' FWL
SEC. 23, T20S, R33E
Y= 565561.97 N
X= 756389.28 E
LAT: 32.5528494° N
LONG: 103.6354430° W

CORNER COORDINATES TABLE
NAD 83 NME, NMSPC ZONE 3001

A	- Y= 570296.85 N, X= 754158.86 E
B	- Y= 570318.86 N, X= 756801.34 E
D	- Y= 567655.87 N, X= 754176.61 E
F	- Y= 565014.55 N, X= 754195.06 E
G	- Y= 565029.65 N, X= 756839.74 E

CORNER COORDINATES TABLE
NAD 83 NME, NMSPC ZONE 3001

A	- LAT.=32.5659031° N, LONG.=103.6425168° W
B	- LAT.=32.5659162° N, LONG.=103.6339394° W
D	- LAT.=32.5586438° N, LONG.=103.6425148° W
F	- LAT.=32.5513837° N, LONG.=103.6425106° W
G	- LAT.=32.5513778° N, LONG.=103.6339278° W

**LAST TAKE POINT/
BOTTOM HOLE LOCATION**
NAD 83 NME, NMSPC ZONE 3001

Y= 570214.99 N
X= 756337.46 E
LAT: 32.5656391° N
LONG: 103.6354473° W

17 OPERATOR CERTIFICATION

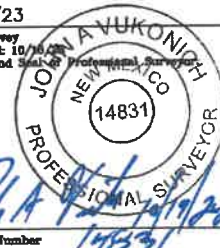
I hereby certify that the information contained herein is true and complete to the best of my knowledge and belief, and that this organization either owns a working interest or unleased mineral interest in the land including the proposed bottom hole location or has a right to drill this well at this location pursuant to a contract with an owner of such a mineral or working interest, or to a voluntary pooling agreement or a compulsory pooling order heretofore entered by the division.

Sarah Ferreyros 10/20/2023
Signature Date
Printed Name sarah@avantnr.com
E-mail Address

18 SURVEYOR CERTIFICATION

I hereby certify that the well location shown on this plat was plotted from field notes of actual surveys made by me or under my supervision, and that the same is true and correct to the best of my belief.

2/14/23
Date of Survey
Plat Revised: 10/16/2023
Signature and Seal of Professional Surveyor
John Avukonich
Certificate Number 14831



DISTRICT I
1825 N. Franch Dr., Hobbs, N.M. 88240
Phone: (575) 393-6161 Fax: (575) 393-0720

DISTRICT II
811 S. First St., Artesia, N.M. 88210
Phone: (575) 746-1263 Fax: (575) 746-0720

DISTRICT III
1000 Rio Erasos Rd., Aledo, N.M. 87410
Phone: (505) 334-6178 Fax: (505) 334-6170

DISTRICT IV
1220 S. St. Francis Dr., Santa Fe, N.M. 87505
Phone: (505) 478-3400 Fax: (505) 478-3482

State of New Mexico
Energy, Minerals & Natural Resources Department

Form C-102

Revised August 1, 2011

OIL CONSERVATION DIVISION
1220 South St. Francis Dr.
Santa Fe, N.M. 87505

Submit one copy to appropriate
District Office

AMENDED REPORT

WELL LOCATION AND ACREAGE DEDICATION PLAT

¹ API Number	² Pool Code 58960	³ Pool Name Teas: Bone Spring
⁴ Property Code	⁵ Property Name SANDRA JEAN 23 FED COM	⁶ Well Number 605H
⁷ OGRID No. 330396	⁸ Operator Name AVANT OPERATING, LLC	⁹ Elevation 3623

¹⁰ Surface Location

UL or lot no.	Section	Township	Range	Lot Idn	Feet from the	North/South line	Feet from the	East/West line	County
N	23	20 S	33 E		200	SOUTH	1768	WEST	LEA

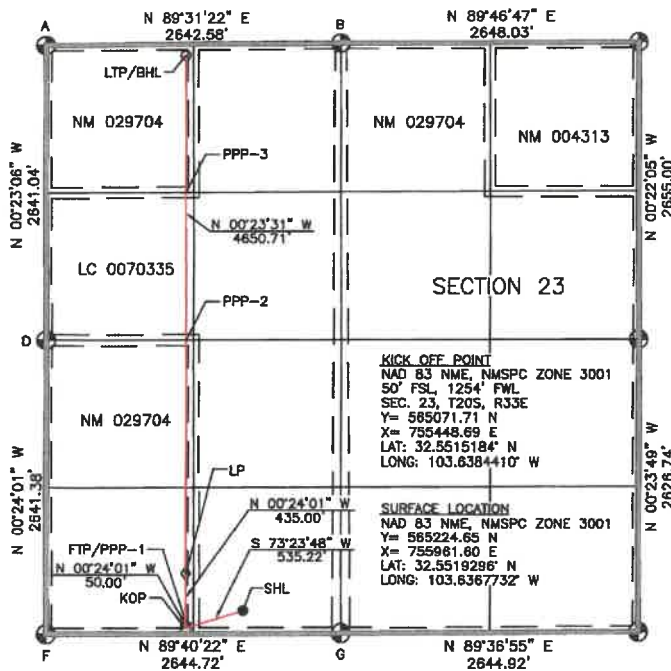
¹¹ Bottom Hole Location If Different From Surface

UL or lot no.	Section	Township	Range	Lot Idn	Feet from the	North/South line	Feet from the	East/West line	County
D	23	20 S	33 E		100	NORTH	1254	WEST	LEA

¹² Dedicated Acres SECTION 23: 640 Ac.	¹³ Joint or Infill	¹⁴ Consolidation Code	¹⁵ Order No.
--	-------------------------------	----------------------------------	-------------------------

NO ALLOWABLE WILL BE ASSIGNED TO THIS COMPLETION UNTIL ALL INTERESTS HAVE BEEN CONSOLIDATED OR A NON-STANDARD UNIT HAS BEEN APPROVED BY THE DIVISION

- ¹⁶ Legend:
- = SURFACE LOCATION (SHL)
 - = LTP/BHL
 - △ = FTP/PPP-1
 - = KICK OFF POINT (KOP)
 - ◇ = LANDING POINT (LP)
 - ⊙ = FOUND 1912 USGLO BRASS CAP



FIRST TAKE POINT/PPP-1
NAD 83 NME, NMSPC ZONE 3001
100' FSL, 1254' FWL
SEC. 23, T20S, R33E
Y= 565121.71 N
X= 755448.34 E
LAT: 32.5516559° N
LONG: 103.6384411° W

LANDING POINT
NAD 83 NME, NMSPC ZONE 3001
535' FSL, 1254' FWL
SEC. 23, T20S, R33E
Y= 565556.70 N
X= 755445.30 E
LAT: 32.5528515° N
LONG: 103.6384417° W

PPP-2
NAD 83 NME, NMSPC ZONE 3001
2638' FSL, 1254' FWL
SEC. 23, T20S, R33E
Y= 56760.19 N
X= 755430.91 E
LAT: 32.5586333° N
LONG: 103.6384439° W

PPP-3
NAD 83 NME, NMSPC ZONE 3001
1324' FSL, 1254' FWL
SEC. 23, T20S, R33E
Y= 568983.74 N
X= 755421.86 E
LAT: 32.5622714° N
LONG: 103.6384452° W

CORNER COORDINATES TABLE
NAD 83 NME, NMSPC ZONE 3001

A - Y= 570298.85 N, X= 754158.86 E
B - Y= 570318.86 N, X= 756801.34 E
D - Y= 567855.87 N, X= 754176.61 E
F - Y= 565014.55 N, X= 754185.06 E
G - Y= 565029.85 N, X= 756839.74 E

CORNER COORDINATES TABLE
NAD 83 NME, NMSPC ZONE 3001

A - LAT.=32.5659031° N, LONG.=103.6425168° W
B - LAT.=32.5659162° N, LONG.=103.6339394° W
D - LAT.=32.5586439° N, LONG.=103.6425148° W
F - LAT.=32.5513837° N, LONG.=103.6425108° W
G - LAT.=32.5513778° N, LONG.=103.639276° W

**LAST TAKE POINT/
BOTTOM HOLE LOCATION**
NAD 83 NME, NMSPC ZONE 3001

Y= 570207.30 N
X= 755413.49 E
LAT: 32.5656345° N
LONG: 103.6384484° W

¹⁷ OPERATOR CERTIFICATION

I hereby certify that the information contained herein is true and complete to the best of my knowledge and belief, and that this organization either owns a working interest or unleased mineral interest in the land including the proposed bottom hole location or has a right to drill this well at this location pursuant to a contract with an owner of such a mineral or working interest, or to a voluntary pooling agreement or a compulsory pooling order heretofore entered by the division.

Sarah Ferreyros 10/20/2023
Signature Date
Printed Name Sarah Ferreyros
E-mail Address sarah@avantnr.com

¹⁸ SURVEYOR CERTIFICATION

I hereby certify that the well location shown on this plat was plotted from field notes of actual surveys made by me or under my supervision, and that the same is true and correct to the best of my belief.

2/14/23
Date of Survey
Plat Revised: 10/16/23
Signature and Seal of Professional Surveyor
JOE AVUKONITH
14831
Certificate Number

DISTRICT I
1825 N. French Dr., Hobbs, N.M. 88240
Phone: (575) 393-6161 Fax: (575) 393-0720

DISTRICT II
811 S. First St., Artesia, N.M. 88210
Phone: (575) 748-1293 Fax: (575) 748-9720

DISTRICT III
1000 Rio Brazos Rd., Aloc, N.M. 87410
Phone: (505) 334-6178 Fax: (505) 334-6170

DISTRICT IV
1220 S. St. Francis Dr., Santa Fe, N.M. 87505
Phone: (505) 478-3460 Fax: (505) 478-3462

State of New Mexico
Energy, Minerals & Natural Resources Department

Form C-102
Revised August 1, 2011

OIL CONSERVATION DIVISION
1220 South St. Francis Dr.
Santa Fe, N.M. 87505

Submit one copy to appropriate
District Office

AMENDED REPORT

WELL LOCATION AND ACREAGE DEDICATION PLAT

*API Number		*Pool Code	*Pool Name
		58960	Teas; Bone Spring
*Property Code	*Property Name		*Well Number
	SANDRA JEAN 23 FED COM		606H
*OGRID No.	*Operator Name		*Elevation
330396	AVANT OPERATING, LLC		3622

¹⁰ Surface Location

UL or lot no.	Section	Township	Range	Lot Idn	Feet from the	North/South line	Feet from the	East/West line	County
M	23	20 S	33 E		200	SOUTH	1127	WEST	LEA

¹¹ Bottom Hole Location If Different From Surface

UL or lot no.	Section	Township	Range	Lot Idn	Feet from the	North/South line	Feet from the	East/West line	County
D	23	20 S	33 E		100	NORTH	330	WEST	LEA

¹² Dedicated Acres	¹³ Joint or Infill	¹⁴ Consolidation Code	¹⁵ Order No.
SECTION 23: 640 Ac.			

NO ALLOWABLE WILL BE ASSIGNED TO THIS COMPLETION UNTIL ALL INTERESTS HAVE BEEN CONSOLIDATED OR A NON-STANDARD UNIT HAS BEEN APPROVED BY THE DIVISION

16 Legend:

- = SURFACE LOCATION (SHL)
- = LTP/BHL
- △ = FTP/PPP-1
- = KICK OFF POINT (KOP)
- ◇ = LANDING POINT (LP)
- ⊙ = FOUND 1912 USGLO BRASS CAP

FIRST TAKE POINT/PPP-1
NAD 83 NME, NMSPC ZONE 3001
100' FSL, 330' FWL
SEC. 23, T20S, R33E
Y= 568116.43 N
X= 754524.35 E
LAT: 32.5516579° N
LONG: 103.6414398° W

LANDING POINT
NAD 83 NME, NMSPC ZONE 3001
535' FSL, 330' FWL
SEC. 23, T20S, R33E
Y= 585551.42 N
X= 754521.31 E
LAT: 32.5528535° N
LONG: 103.6414405° W

PPP-2
NAD 83 NME, NMSPC ZONE 3001
2641' FSL, 330' FWL
SEC. 23, T20S, R33E
Y= 587657.00 N
X= 754506.91 E
LAT: 32.5586411° N
LONG: 103.6414428° W

CORNER COORDINATES TABLE
NAD 83 NME, NMSPC ZONE 3001

A - Y= 570296.85 N, X= 754158.86 E
B - Y= 570318.86 N, X= 756801.34 E
D - Y= 587655.87 N, X= 754176.61 E
F - Y= 585014.55 N, X= 754195.06 E
G - Y= 585029.85 N, X= 756839.74 E

CORNER COORDINATES TABLE
NAD 83 NME, NMSPC ZONE 3001

A - LAT.=32.5659031° N, LONG.=103.6425168° W
B - LAT.=32.5659162° N, LONG.=103.6338394° W
D - LAT.=32.5586439° N, LONG.=103.6425148° W
F - LAT.=32.5513837° N, LONG.=103.6425108° W
G - LAT.=32.5513778° N, LONG.=103.6338276° W

**LAST TAKE POINT/
BOTTOM HOLE LOCATION**
NAD 83 NME, NMSPC ZONE 3001

A - Y= 570199.60 N
X= 754489.52 E
D - Y= 585029.85 N
LAT: 32.5652289° N
LONG: 103.6414458° W

17 OPERATOR CERTIFICATION

I hereby certify that the information contained herein is true and complete to the best of my knowledge and belief, and that this organization either owns a working interest or unleased mineral interest in the land including the proposed bottom hole location or has a right to drill this well at this location pursuant to a contract with an owner of such a mineral or working interest, or to a secondary pooling agreement or a compulsory pooling order heretofore entered by the division.

10/20/2023
Date

Signature: Sarah Ferreyros

Printed Name: Sarah Ferreyros

E-mail Address: sarah@avantnr.com

18 SURVEYOR CERTIFICATION

I hereby certify that the well location shown on this plat was plotted from field notes of actual surveys made by me or under my supervision, and that the same is true and correct to the best of my belief.

2/14/23
Date of Survey

Flat Revised: 10/18/23
Signature and Title: J. Vukonic, Professional Surveyor

Certificate Number: 14831