

District I
1625 N. French Dr., Hobbs, NM 88240
Phone: (575) 393-6161 Fax: (575) 393-0720

District II
811 S. First St., Artesia, NM 88210
Phone: (575) 748-1283 Fax: (575) 748-9720

District III
1000 Rio Brazos Road, Aztec, NM 87410
Phone: (505) 334-6178 Fax: (505) 334-6170

District IV
1220 S. St. Francis Dr., Santa Fe, NM 87505
Phone: (505) 476-3460 Fax: (505) 476-3462

State of New Mexico
Energy, Minerals & Natural Resources Department
OIL CONSERVATION DIVISION
1220 South St. Francis Dr.
Santa Fe, NM 87505

Form C-102 Revised August 1, 2011
Submit one copy to appropriate
District Office

AMENDED REPORT

WELL LOCATION AND ACREAGE DEDICATION PLAT

¹ API Number		² Pool Code		³ Pool Name	
		53560		Salt Lake; Bone Spring	
⁴ Property Code		⁵ Property Name			⁶ Well Number
		QUEENIE FED COM			304H
⁷ OGRID No.		⁸ Operator Name			⁹ Elevation
372098		MARATHON OIL PERMIAN, LLC			3529'

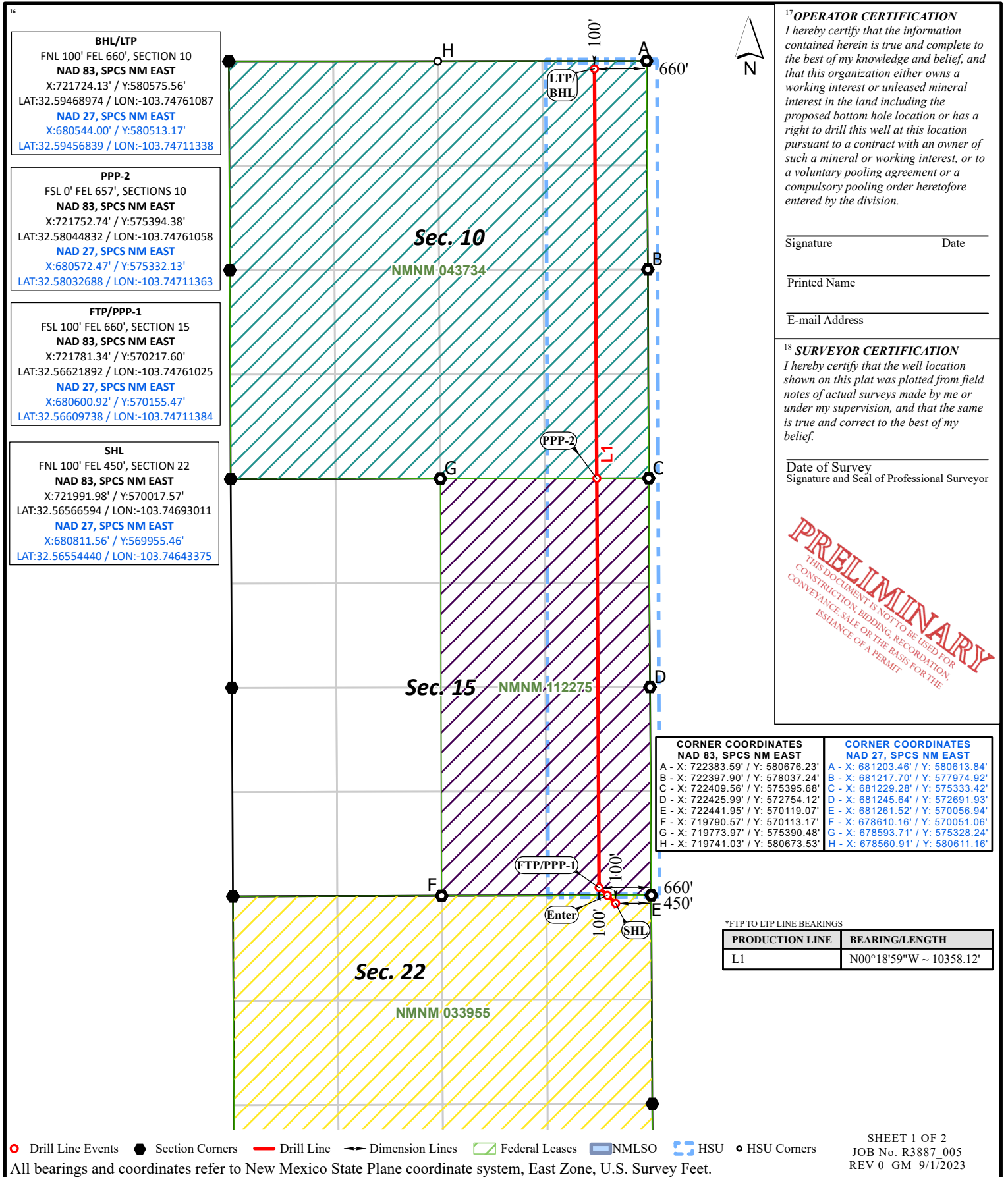
¹⁰ Surface Location

UL or lot no.	Section	Township	Range	Lot Idn	Feet from the	North/South line	Feet from the	East/West line	County
A	22	20S	32E		100'	NORTH	450'	EAST	LEA

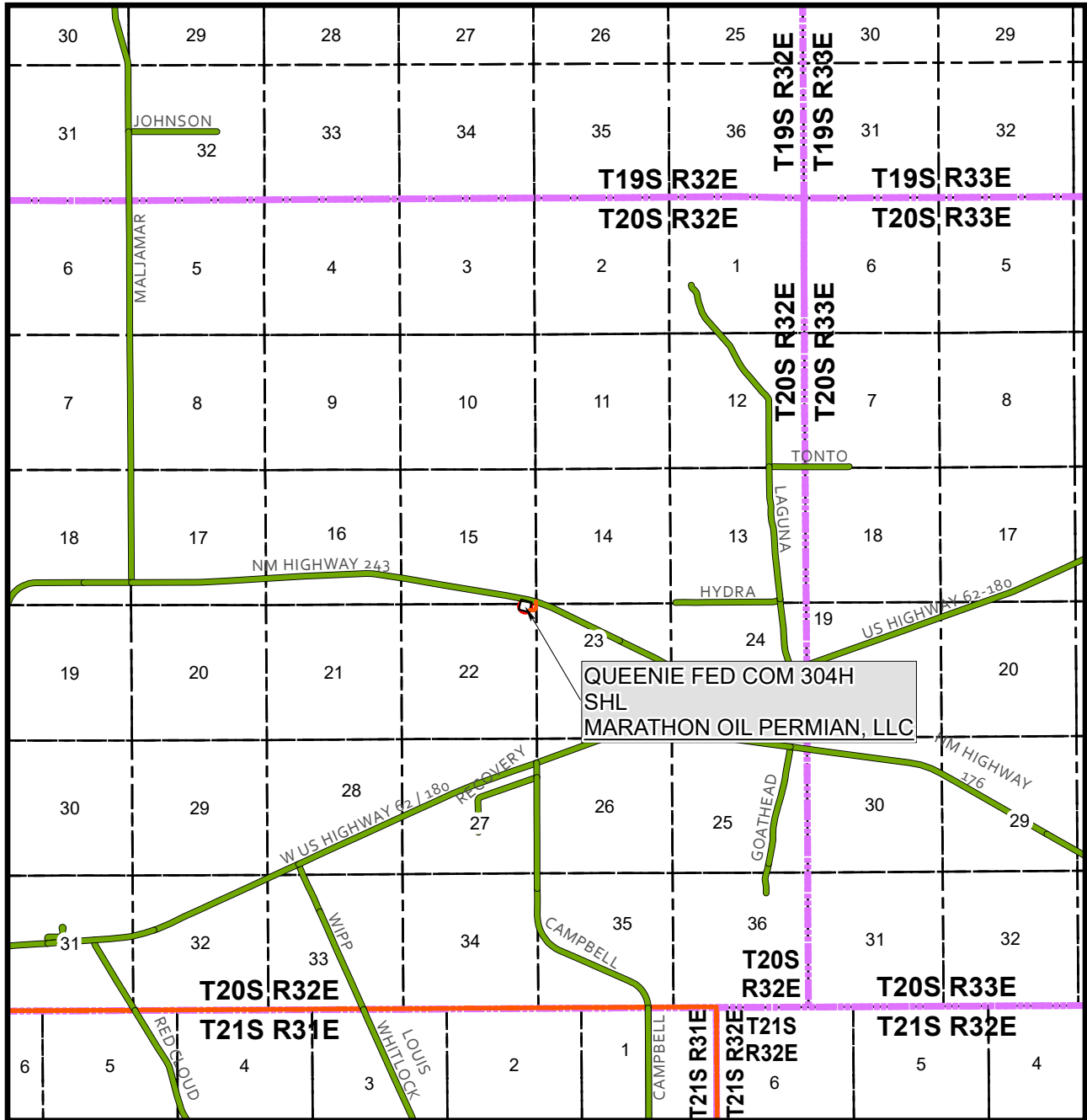
¹¹ Bottom Hole Location If Different From Surface

UL or lot no.	Section	Township	Range	Lot Idn	Feet from the	North/South line	Feet from the	East/West line	County
A	10	20S	32E		100'	NORTH	660'	EAST	LEA
¹² Dedicated Acres		¹³ Joint or Infill		¹⁴ Consolidation Code		¹⁵ Order No.			
320									

No allowable will be assigned to this completion until all interests have been consolidated or a non-standard unit has been approved by the division.



VICINITY MAP



SEC. 22 TWP. 20S RGE. 32E
 SURVEY: N.M.P.M.
 COUNTY: LEA
 OPERATOR: MARATHON OIL PERMIAN, LLC
 DESCRIPTION: 100' FNL & 450' FEL
 ELEVATION: 3529'
 LEASE: QUEENIE FED COM
 U.S.G.S. TOPOGRAPHIC MAP: LAGUNA GATUNA, NM.

1" = 1 MILE

FROM THE MARATHON OFFICE AT 4111 TIDWELL, CARLSBAD, NEW MEXICO, HEAD SOUTH ON TIDWELL ROAD TOWARD U.S. HIGHWAY 285 NORTH FOR 0.2 MILES. TURN RIGHT ONTO U.S. HIGHWAY 285 NORTH, HEADING NORTH FOR 2.6 MILES. KEEP RIGHT TO CONTINUE ON SOUTH CANAL STREET FOR 0.1 MILES. SLIGHT RIGHT TO STAY ON SOUTH CANAL STREET FOR 1.3 MILES. SLIGHT RIGHT ON SOUTH CANYON STREET FOR 0.7 MILES. TURN RIGHT ONTO U.S. 180 EAST / U.S. 62 EAST / WEST GREENE STREET, HEADING WEST, FOR 32.3 MILES. TURN LEFT ONTO STATE HIGHWAY 243, HEADING NORTH FOR 1.5 MILES TO THE PROPOSED LEASE ROAD. HEADING SOUTH FOR 539.23 FEET, ENTERING THE SOUTHEAST CORNER OF SAID WELL PAD LOCATION.



SHEET 2 OF 2

PREPARED BY:
 DELTA FIELD SERVICES, LLC
 510 TRENTON STREET, WEST MONROE, LA 71291
 318-323-6900 OFFICE
 JOB No. R3887_005